

The Disaster Center is dedicated to the idea that disaster mitigation is cost effective and individuals pursuing their own interest are the greatest potential force for disaster reduction.

Please consider making a small donation to the Disaster Center



When disaster mitigation is cost effective, we are on the road to bringing disasters to an end.



FEMA

Daily Operations Briefing

Sunday, October 14, 2018

8:30 a.m. EDT

Significant Activity – Oct 13-14



FEMA

Significant Events: Tropical Storm Michael Response

Tropical Activity:

- Atlantic – Disturbance 1
- Eastern Pacific – Disturbance 1; Disturbance 2
- Central Pacific – No new tropical cyclones are expected during the next five days
- Western Pacific – No activity affecting U.S. interests

Significant Weather:

- Severe thunderstorms, heavy rain, and flash flooding possible for portions of the Southern Plains and Lower Mississippi Valley
- Heavy snow possible for the Central and Southern Rockies
- Red Flag Warnings for CA, WY, SD, NE, CO, and NM
- Critical Fire Weather conditions for portions of northern and southern California

Declaration Activity:

- Amendment No. 2 to FEMA-4399-DR-FL

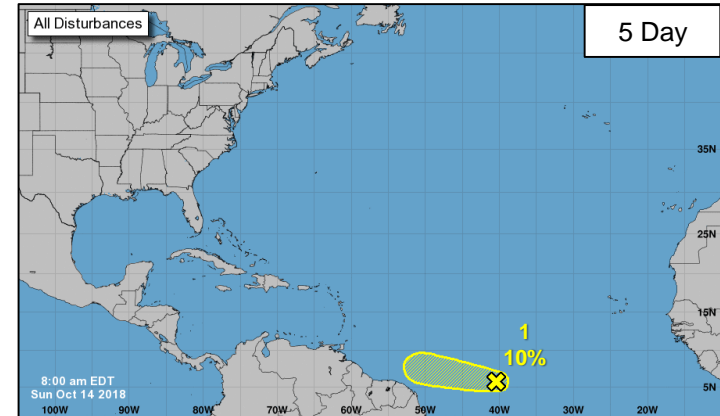
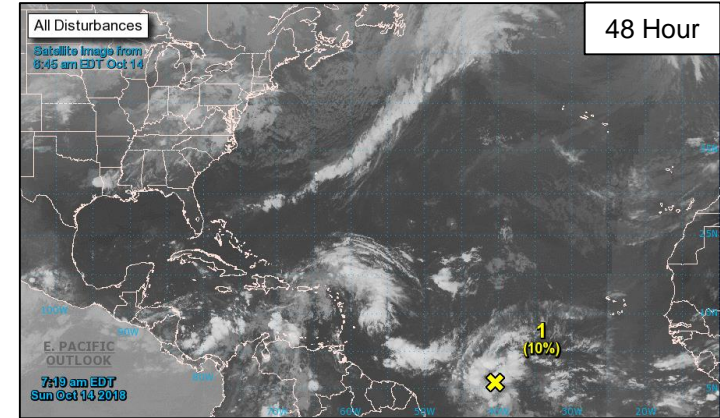
Tropical Outlook – Atlantic



FEMA

Disturbance 1 (as of 8:00 a.m. EDT)

- Located 800 miles east of French Guiana
- Moving west at 15 mph
- Slight development is possible in next day or two
- Formation chance through 48 hours: Low (10%)
- Formation chance through 5 days: Low (10%)



Tropical Outlook – Eastern Pacific

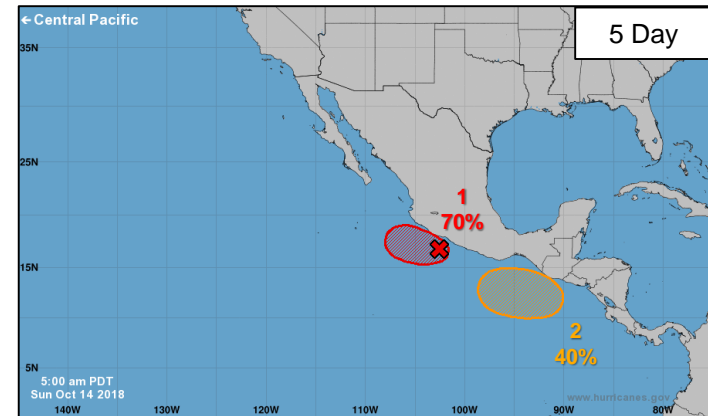
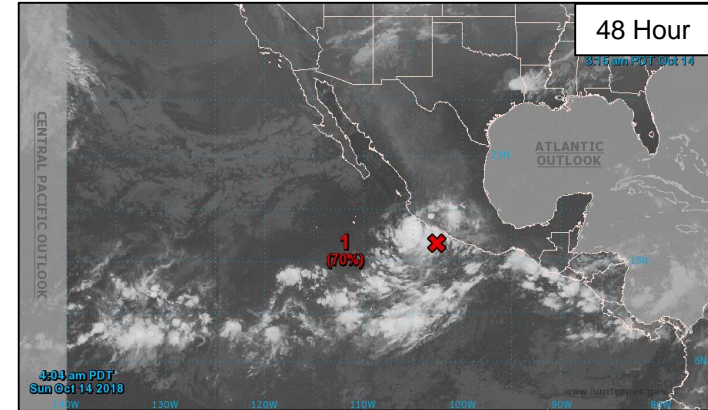


Disturbance 1 (As of 8:00 a.m. EDT)

- 200 miles SSE of Manzanillo, Mexico
- Favorable development in next few days
- Tropical depression likely to form early next week close to coast of southwestern Mexico
- Formation chance next 48 hours – Medium (70%)
- Formation chance next 5 days – High (70%)

Disturbance 2 (As of 8:00 a.m. EDT)

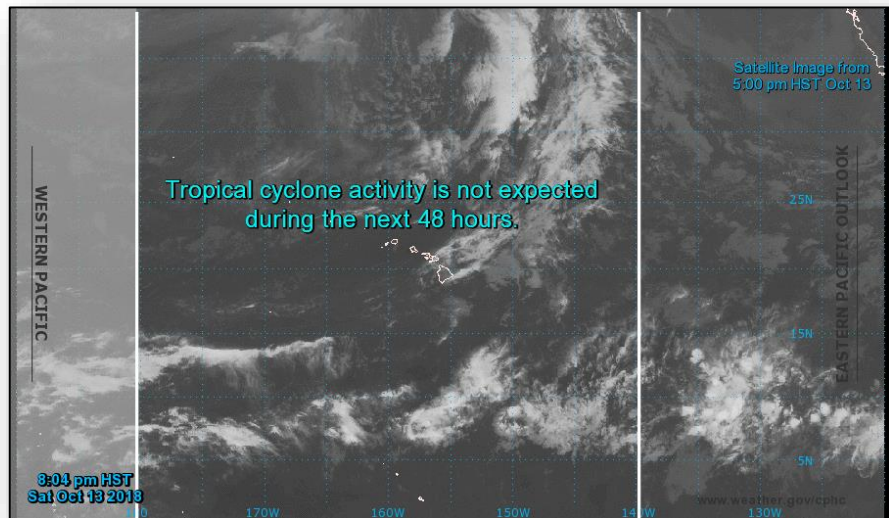
- Few hundred miles S of coast of Mexico
- Development somewhat favorable for development while moves westward
- Formation chance next 48 hours – Low (0%)
- Formation chance next 5 days – Medium (40%)



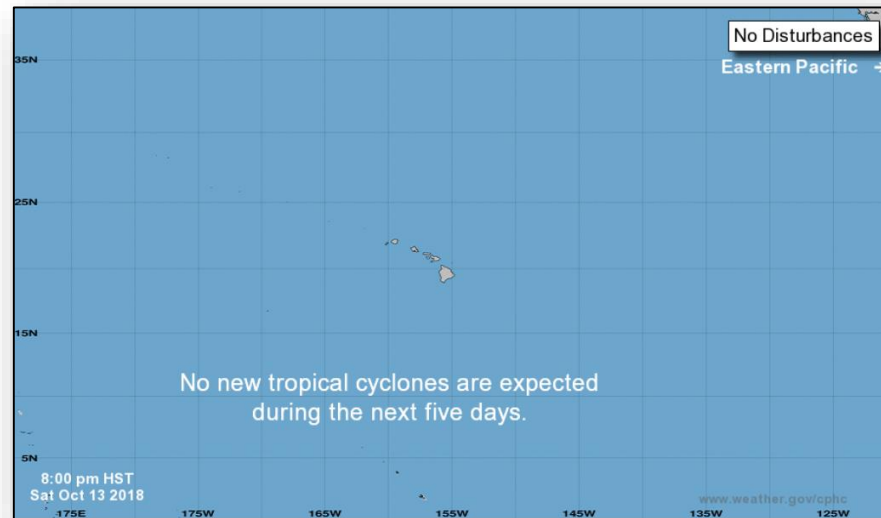
Tropical Outlook – Central Pacific



FEMA



48 Hour Outlook



5 Day Outlook

Tropical Cyclone Michael



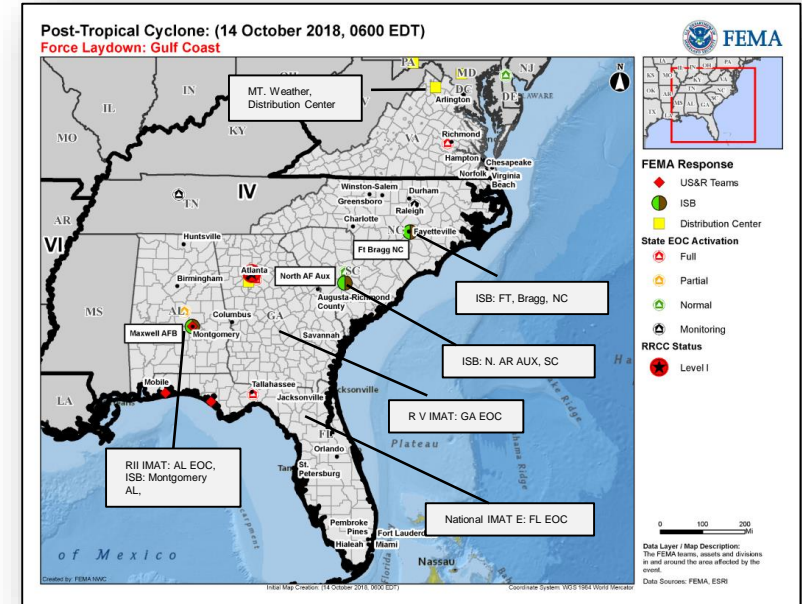
FEMA

State/Local Response

- AL EOC at Partial Activation:
 - Governor declared a statewide State of Emergency
 - Emergency Declaration FEMA-3407-EM approved on October 12th
- FL EOC at Full Activation:
 - Governor declared a State of Emergency for 35 counties
 - Emergency Declaration FEMA-3405-EM-FL approved October 9th
 - Major Disaster Declaration FEMA-4399-DR-FL approved October 11th
- GA EOC at Full Activation:
 - Governor declared State of Emergency for 108 counties
 - Emergency Declaration FEMA-3406-EM-GA approved on October 10th
 - Governor requested a Major Disaster Declaration on October 12th
- NC EOC at Monitoring; Governor declared a State of Emergency
- SC EOC at Normal Operations; Governor declared a State of Emergency
- TN EOC at Monitoring (EMAC support)
- VA EOC at **Monitoring**; Governor declared a State of Emergency

FEMA Region IV

- RRCC at Level I (24/7), all ESFs, DCO/DCE and DHS NPPD
- LNOs deployed to FL and GA
- IMAT-2 deployed to FL EOC



FEMA HQ/Federal Response

- NRCC at Level II with select ESFs
- National IMAT East deployed to FL EOC
- Region II IMAT deployed to AL EOC
- Region V IMAT deployed to GA EOC
- ISB Team deployed to Montgomery, AL
- Staging areas: Montgomery, AL (Maxwell AFB); Fayetteville, NC (Ft Bragg); North AF AUX, SC

Tropical Cyclone Michael



FEMA

Safety and Security

- US&R:
 - Pensacola, FL: Red IST, IST cache, FSARCG
 - Mexico Beach, Panama City, & Calhoun County, FL – 4 NIMS type 1 task forces and 6 MRPs – Water Rescue are conducting ground based wide area search operations
 - Filled FL request for 12 Canine Search Team – HR Dogs (CST-HRD)

Food, Water, Sheltering

- Shelters / Occupants: FL: 21 / 2,825 (-20); AL: 3 (+1) / 52 (+12); GA: 3 / 128 (Region IV ESF 6)
- Mandatory evacuation orders continue for 3 (-1) counties in FL
- Boil water advisories remain in effect for areas of FL and GA

Health and Medical

- GA: 2 (-5) hospitals on generator power, 1 (+1) no power; 1 nursing home no power, 9 (-13) on generator power; 10 (-11) sheltering-in-place
- FL: 3 hospitals closed; 8 dialysis centers closed; Nursing Homes/ Assisted Living Facilities: 18 sheltering in place, 2 with no power, 17 (-1) on generator power, 1(-1) closed/evacuating, and 7 (-1) closed/evacuated
- HHS DMATS: FL: 6; AL 1 (and 1 DMORT); 1 cache staged in Atlanta, GA

Energy: FL – 249k (-15k); GA – 178k (-22k); AL – 10k (-2.6k) (FEMA NRCC SLB, October 14, 2018, 5:00 a.m. EDT*)

Region IV



Communications

- Cellular networks over 97% available across affected regions with localized outages

Transportation

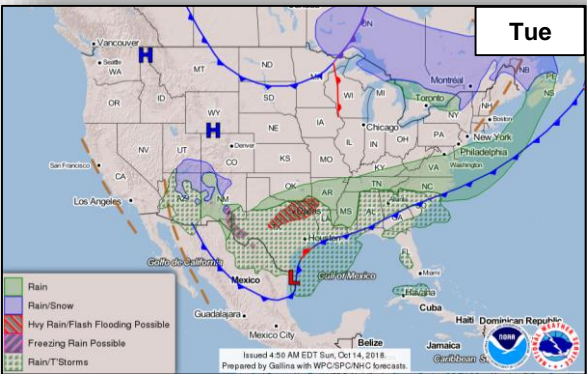
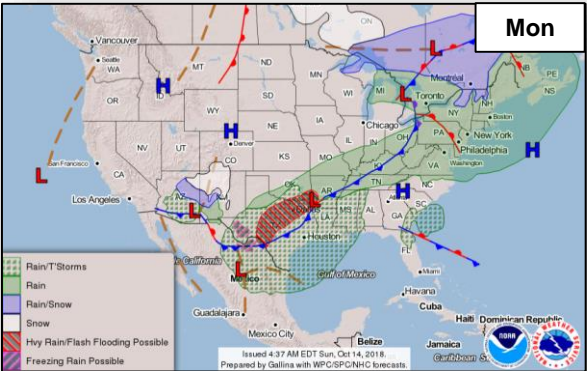
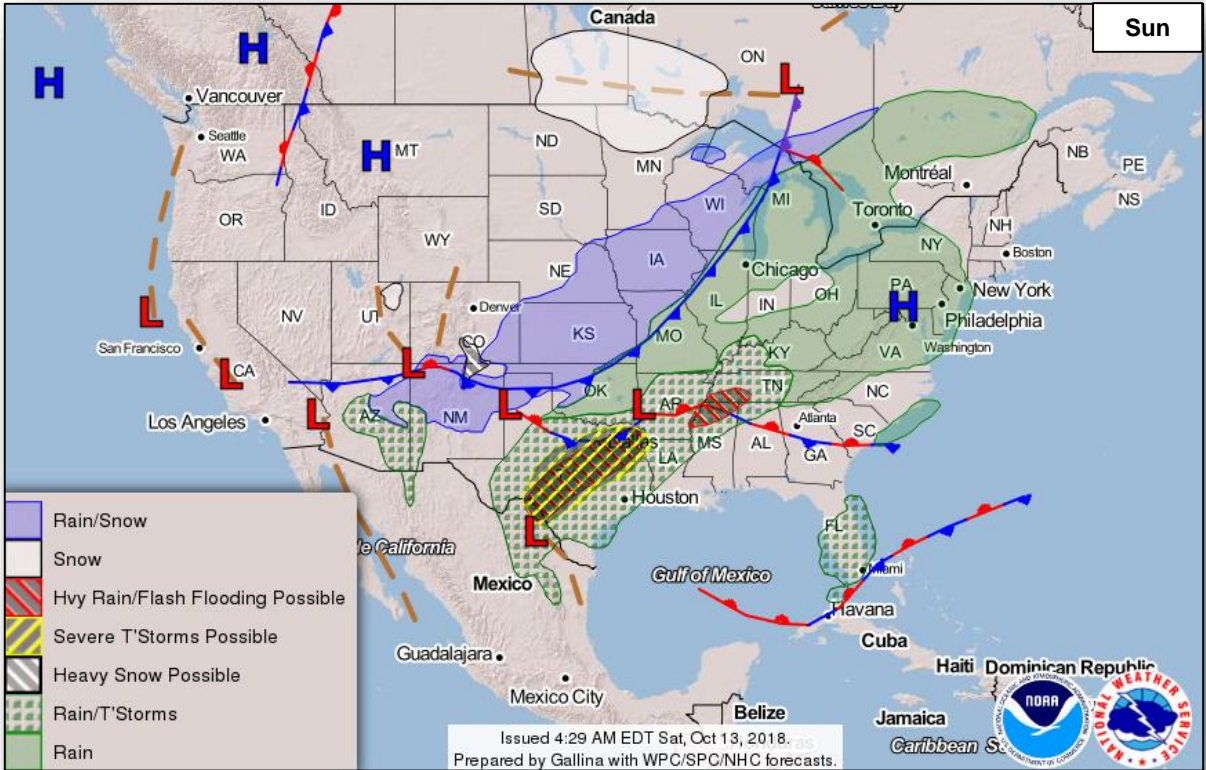
- Roads / Highways:
 - Roads continue to re-open in FL as debris clearance and inspections continue
 - Debris Planning and Response Teams (PRTs) and SMEs received mission assignments to support debris clearance
- Airports: All airports are re-opened
- Port Conditions: All seaports have re-opened w/restrictions

(*Note: Customer outage data provided by the Department of Energy's EAGLE-I system. Comprehensive National coverage of all electrical service providers is not available)

National Weather Forecast



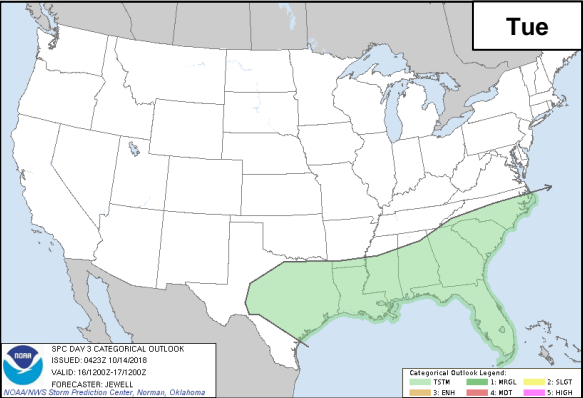
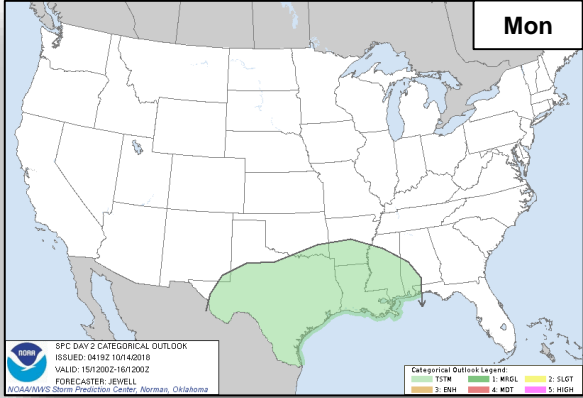
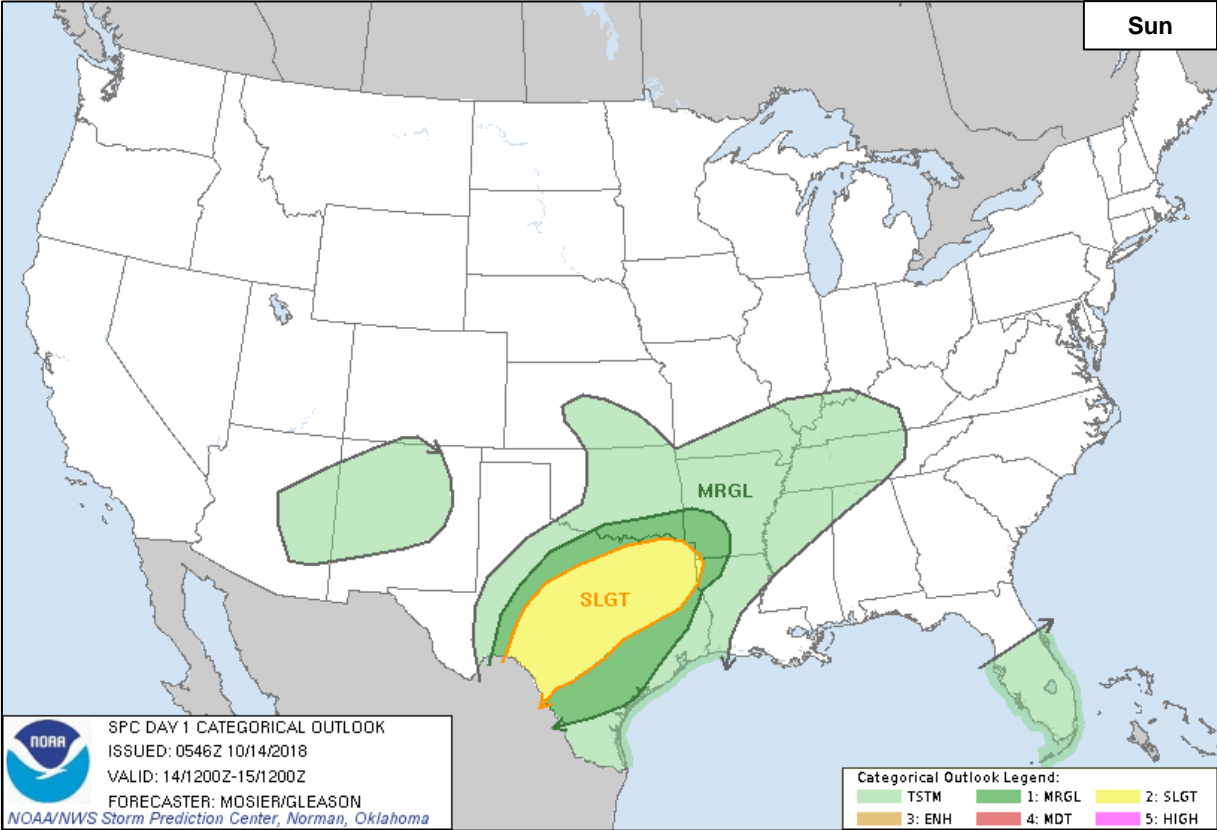
FEMA



Severe Weather Outlook



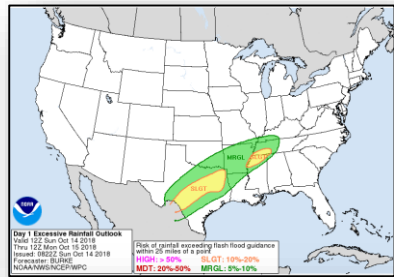
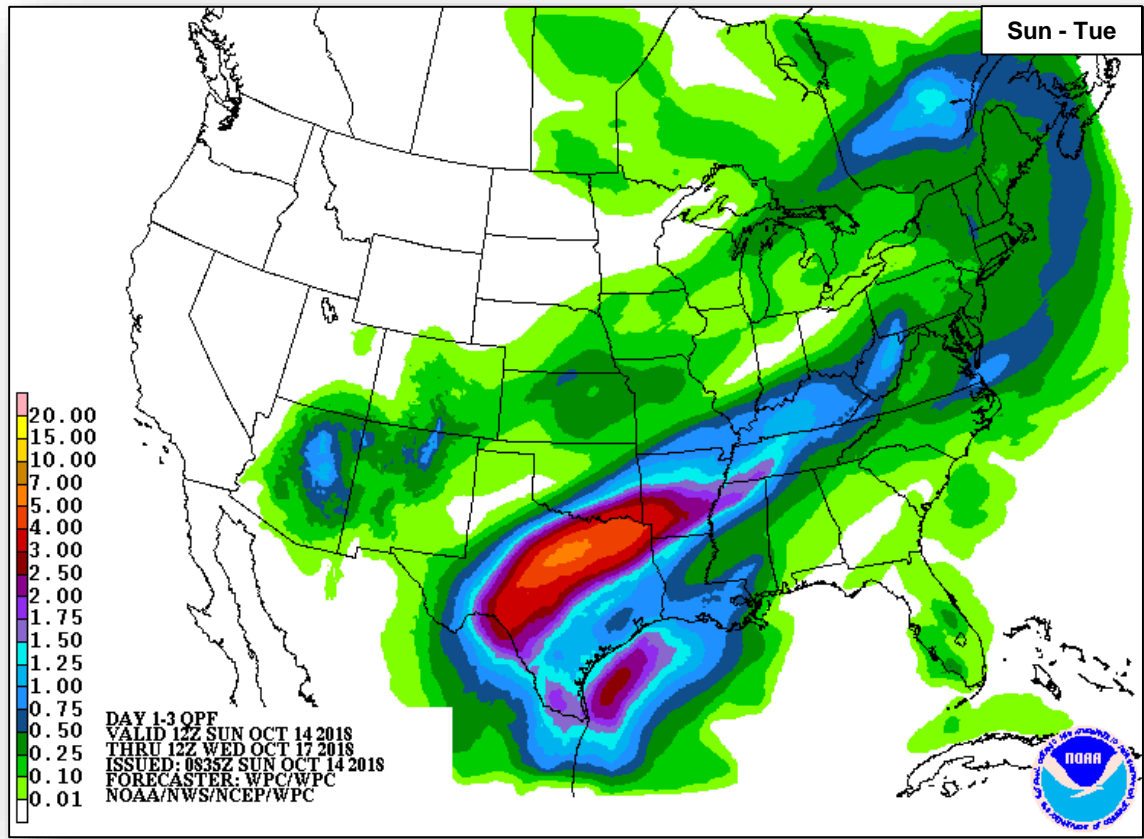
FEMA



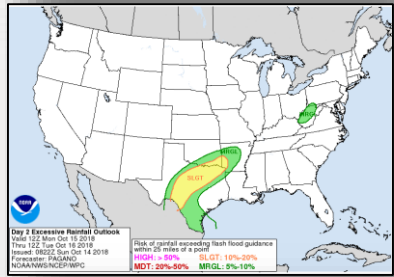
Precipitation / Excessive Rainfall Forecast



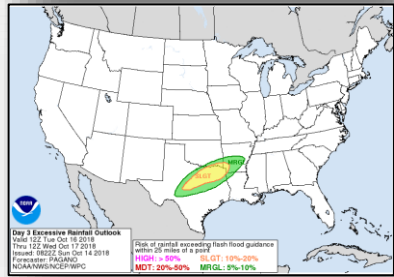
FEMA



Sun



Mon

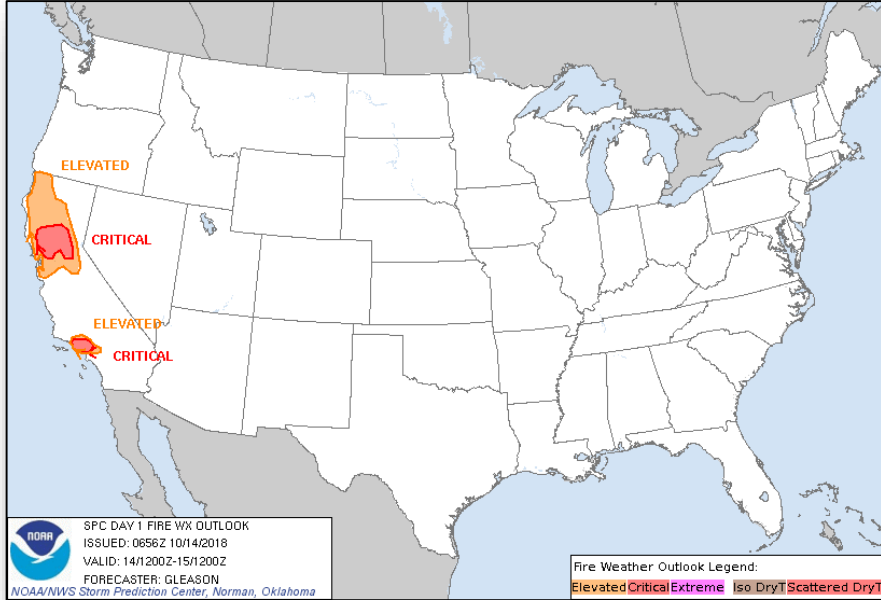


Tue

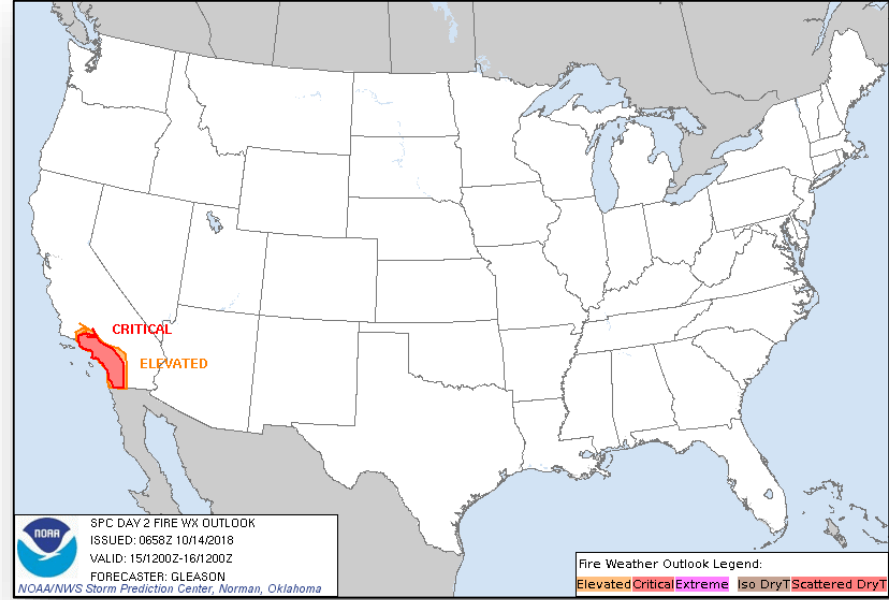
Fire Weather Outlook



FEMA



Sunday

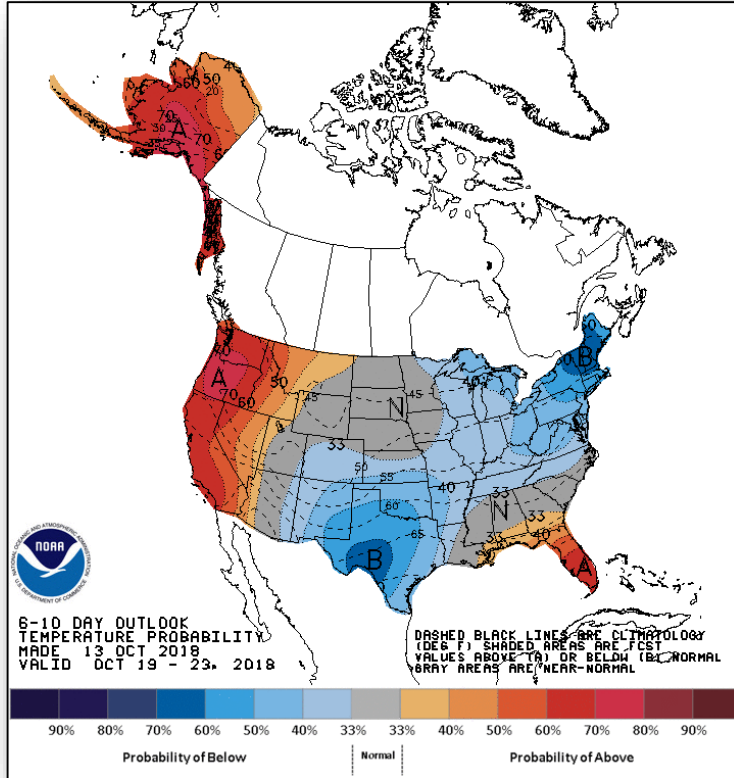


Monday

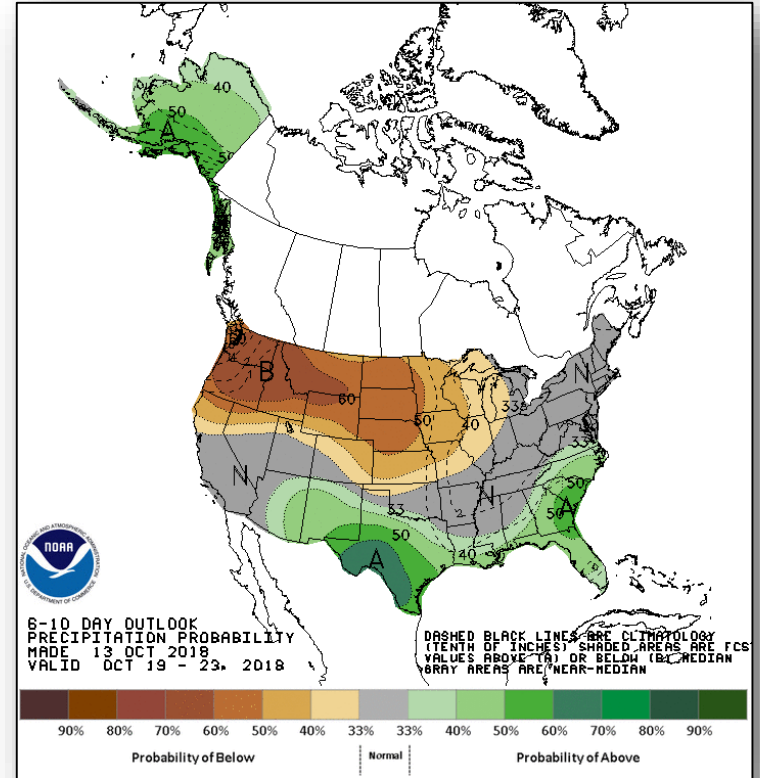
Long Range Outlooks – Oct 19-23



FEMA



6 - 10 Day Temperature Probability



6 - 10 Day Precipitation Probability

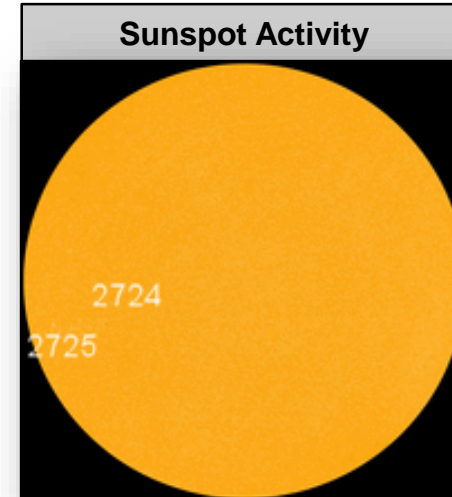
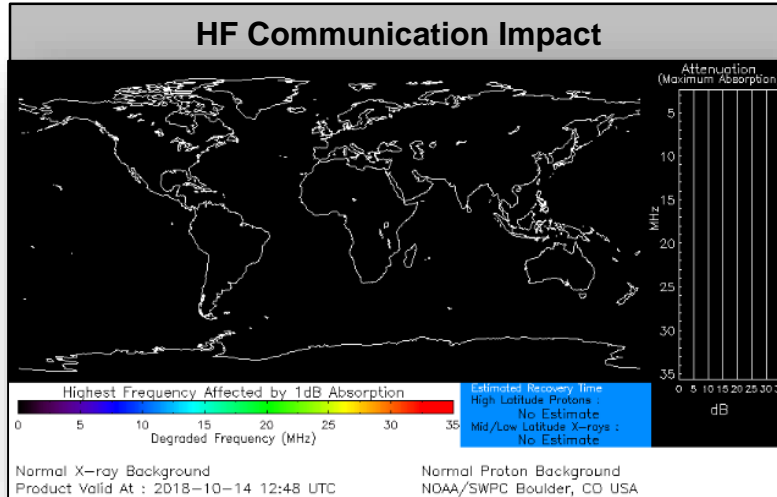
Space Weather



FEMA

	Space Weather Activity	Geomagnetic Storms	Solar Radiation	Radio Blackouts
Past 24 Hours	Minor	G1	None	None
Next 24 Hours	Minor	G1	None	None

For further information on NOAA Space Weather Scales refer to: <http://www.swpc.noaa.gov/noaa-scales-explanation>



Joint Preliminary Damage Assessments



FEMA

Region	State / Location	Event	IA / PA	Number of Counties		Start – End
				Requested	Completed	
III	PA	Severe Weather July 21-27, 2018	IA	12	12	9/5 – 9/27
			PA	14	12	9/5 – TBD
	PA	Severe Weather August 10-15, 2018	IA	14	14	9/5 – 9/26
			PA	15	10	9/5 – TBD

Disaster Requests & Declarations



FEMA

Declaration Requests in Process					Requests APPROVED (since last report)	Requests DENIED (since last report)
7	IA	PA	HM	Date Requested	0	0
PA – DR (Appeal) Severe Storms, Flooding, and Landslides		X	X	September 7		
NC – DR (Appeal) Severe Storms, Flooding, Landslides, and Mudslides	X	X	X	September 19		
SD – DR (Appeal) Severe Storms and Flooding		X	X	September 25		
KS – DR Severe Storms, Straight-line Winds, and Flooding		X	X	September 25		
VA – DR Hurricane Florence		X	X	October 3		
WI – DR Severe Storms, Tornadoes, Straight-line Winds, Flooding and Landslides	X	X	X	October 4		
GA – DR Hurricane Michael	X	X	X	October 12		

Disaster Amendments



FEMA

Amendment	Date Issued	Action
Amendment No. 2 to FEMA-4399-DR-FL	October 13, 2018	Adds 2 counties for IA

Readiness – Deployable Teams and Assets



FEMA

Resource	Force Strength	Available	Deployed	Other	Cadres with 25% or Less Availability
IM Workforce	12,225	2,482 20%	6,280	3,463	DSA 9% (77/848); EA 21% (123/572); EHP 8% (34/426); ER 7% (3/46); FL 22% (35/157); FM 23% (63/271); HM 17% (172/1,013); HR 11% (27/246); IT 13% (79/632); LOG 10% (123/1,189); OPS 18% (51/278); PA 10% (192/1,873); PLAN 19% (66/341); SAF 4% (2/57); SEC 8% (9/116)
National IMATs* (1-2 Teams)	East : Composite: West:	Deployed Deployed B-2			
Regional IMATs (≤ 3 Teams)	Assigned: Available: PMC / NMC: Deployed:	13 2 2 9			
National ISBs (0 Teams)	Team A Team B Team C	Deployed Deployed Deployed			
US&R (>33-65%)	Assigned: Available: PMC / NMC: Deployed:	28 16 2 10			
MERS (>66%)	Assigned: Available: PMC / NMC: Deployed:	36 24 (+1) 0 12 (-1)			
FCO (2 Type I)	Assigned: Available: PMC / NMC: Deployed:	32 11 1 (+1) 20 (-1)			
FDRC (≤1)	Assigned: Available: PMC / NMC: Deployed:	13 3 2 8			

As of 3:00 a.m. EDT Oct 14, 2018 Created by: FEMA NWC

* **B-2 Status:** Assemble ≤ 2-hrs, On Site ≤ 18-hrs; **B-48 Status:** Assemble and deploy ≤ 48hrs; **Charlie Status:** No team assemble time requirement

FEMA Readiness – Activation Teams



Status		Activated Team	Activation Level	Activation Times	Reason / Comments
NWC (5 Teams)	Steady State				
NRCC (2 Teams)	Activated	Gold	Level II	24/7	Hurricane Michael
HLT	Activated				
RWC / MOCs (10 Regions)	Steady State				
RRCCs (10 Regions)	Activated	Region IV	Level I	24/7	Hurricane Michael

Backup Regions: **VI, V, & II**



FEMA

FEMA's mission is helping people before, during, and after disasters.

Click here to subscribe: <https://bit.ly/2NDOcQO>