

The Disaster Center is dedicated to the idea that disaster mitigation is cost effective and individuals pursuing their own interest are the greatest potential force for disaster reduction.

Please consider making a small donation to the Disaster Center



When disaster mitigation is cost effective, we are on the road to bringing disasters to an end.



# FEMA

## Daily Operations Briefing

Monday, October 15, 2018

8:30 a.m. EDT

# Significant Activity – Oct 14-15



FEMA

**Significant Events:** Tropical Storm Michael Response

**Tropical Activity:**

- Atlantic – Disturbance 1
- Eastern Pacific – Tropical Storm Tara; Disturbance 1
- Central Pacific – No new tropical cyclones are expected during the next five days
- Western Pacific – No activity affecting U.S. interests

**Significant Weather:**

- Severe thunderstorms, heavy rain, and flash flooding possible for portions of the Southern Plains and Lower Mississippi Valley
- Heavy snow possible for the Central and Southern Rockies
- Red Flag Warnings for CA, WY, SD, NE, CO, and NM
- Critical Fire Weather conditions for portions of northern and southern California

**Declaration Activity:**

- Expedited Major Disaster Declaration approved – Georgia (Hurricane Michael)
- Amendment 6 for FEMA-4393-DR-NC

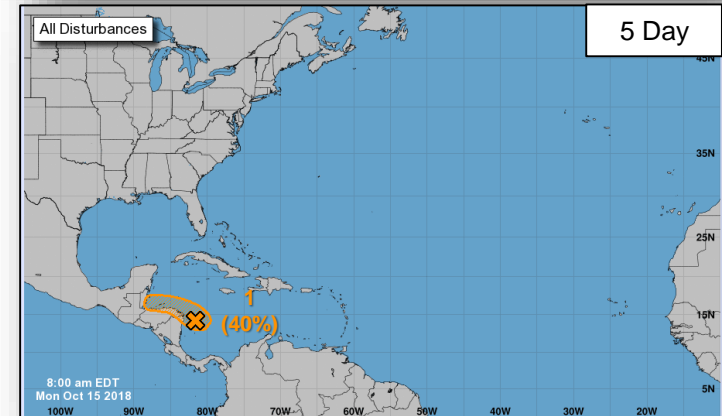
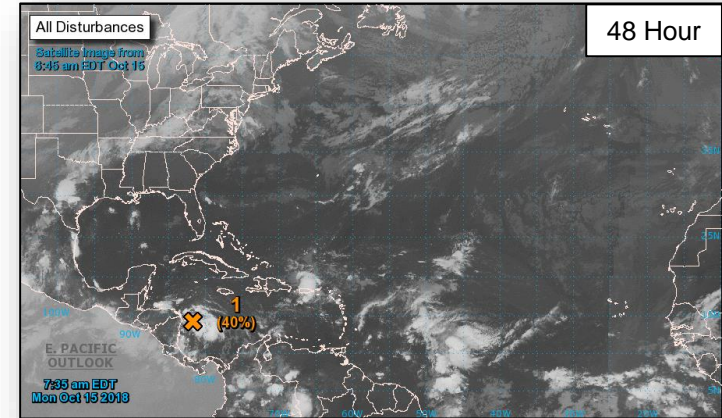
# Tropical Outlook – Atlantic



FEMA

## Disturbance 1 (as of 8:00 a.m. EDT)

- Located over SW Caribbean Sea
- Moving WNW slowly
- Some development possible before it moves inland tonight or Tuesday
- Formation chance through 48 hours: Medium (40%)
- Formation chance through 5 days: Medium (40%)



# Tropical Outlook – Eastern Pacific

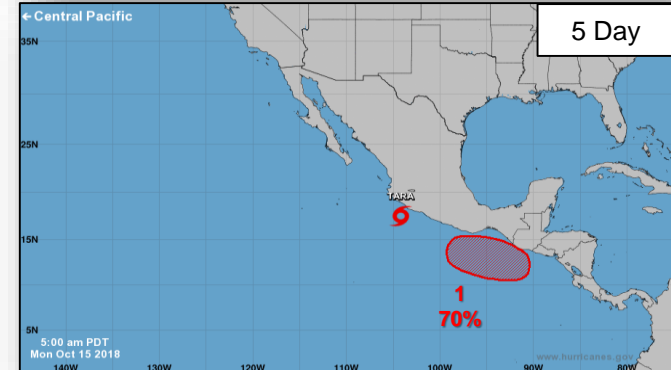


## Tropical Storm Tara (Advisory #4 as of 5:00 a.m. EDT)

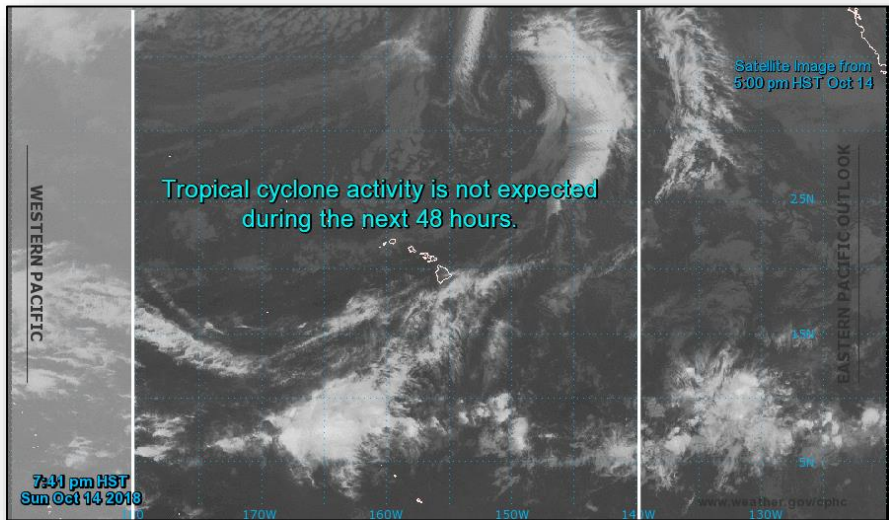
- Located 105 miles S of Manzanillo, Mexico
- Maximum sustained winds 40 mph
- Currently stationary
- Gradual strengthening is expected for next couple of days
- Tropical storm force winds extend 35 miles

## Disturbance 1 (As of 8:00 a.m. EDT)

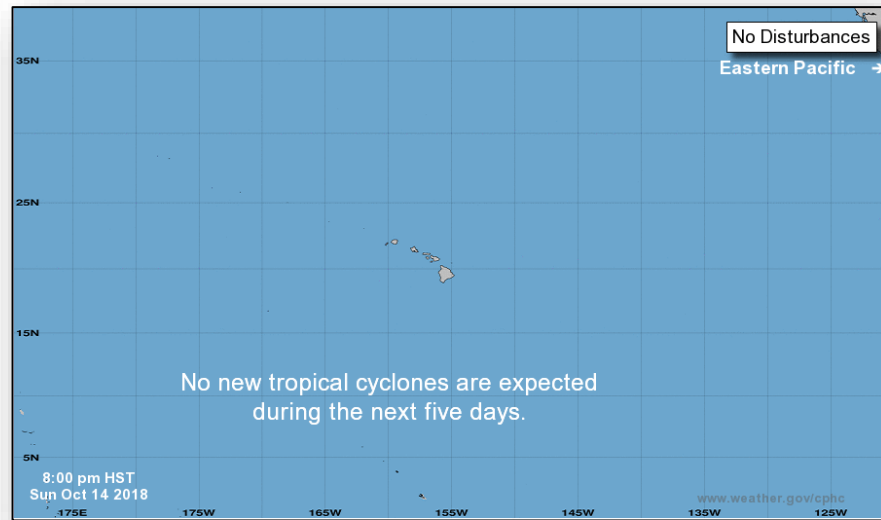
- Located couple hundred miles S of Guatemala
- Development of tropical depression by the end of the week
- Formation chance next 48 hours – Low (Near 0%)
- Formation chance next 5 days – High (70%)



# Tropical Outlook – Central Pacific



**48 Hour Outlook**



**5 Day Outlook**

# Tropical Cyclone Michael



FEMA

## State/Local Response

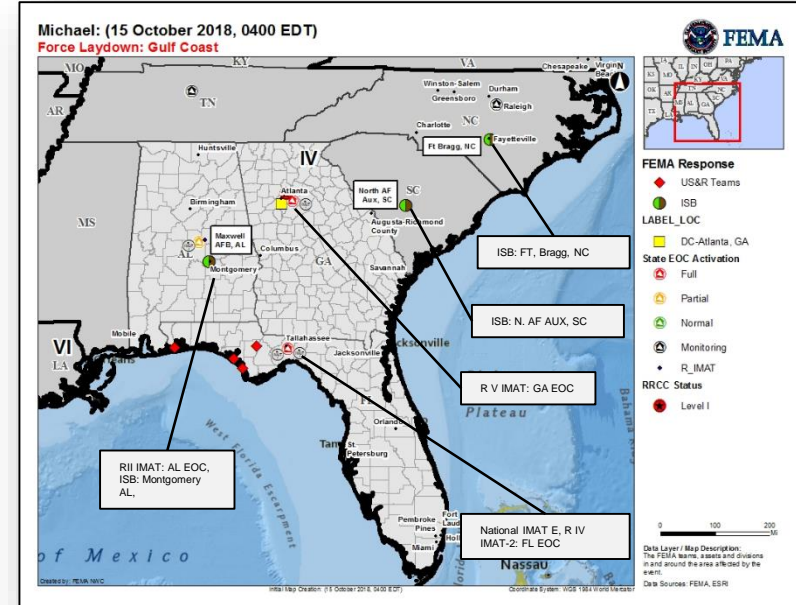
- AL EOC at Partial Activation:
  - Emergency Declaration FEMA-3407-EM approved on October 12
- FL EOC at Full Activation:
  - Emergency Declaration FEMA-3405-EM-FL approved October 9
  - Expedited Major Disaster Declaration FEMA-4399-DR-FL approved October 11
- GA EOC at Full Activation:
  - Emergency Declaration FEMA-3406-EM-GA approved on October 10
  - Expedited Major Disaster Declaration FEMA-4400-DR-GA approved October 14
- NC EOC at Monitoring
- TN EOC at Monitoring (EMAC support)

## FEMA Region IV

- RRCC at Level I (24/7), all ESFs, DCO/DCE and DHS NPPD
- LNOs deployed to FL, AL and GA
- Region IV IMAT-2 deployed to FL EOC

## FEMA HQ/Federal Response

- NRCC at Level II (24/7) with select ESFs and LNOs
- National IMAT East deployed to FL EOC
- Region II IMAT deployed to AL EOC
- Region V IMAT deployed to GA EOC



# Tropical Cyclone Michael



## Safety and Security

- US&R:
  - Pensacola, FL: Red IST, IST cache, FSARCG
  - Mexico Beach, Panama City, & Calhoun County, FL – 4 NIMS type 1 and 6 MRP – Water Rescue Teams are conducting ground based wide area search operations
  - 12 CSTs-HRD en route to FL

## Food, Water, Sheltering

- Evacuations: **FL: No mandatory; voluntary/conditional: 3 counties**
- Shelters / Occupants: **FL: 19 (-3) / 1,632 (-254); AL: 3 / 52; GA: 3 / 164 (+36)**  
(ESF 6 as of 12:41 am EDT)
- Boil water advisories remain in effect for **FL 8 (-7)** and **GA 64 counties**
- **AL: 3 water systems in Houston County are on generator-power**

## Health and Medical

- FL: Hospitals: **4(+1) closed, 3 partially open (ER only), 7 (-2) on generator power, 2 (-6) dialysis centers closed**; Nursing Homes: **7 (-11) shelter in place, 22 (+15) closed and evacuated, 1 re-entry complete, 1 without power, 17 (+9) on generator power**
  - **1 confirmed fatality**
- GA: Hospitals: **2 on generator power, 2 (-8) sheltering in place, 6 dialysis centers closed**; Nursing homes: **0 (-1) without power, 4 (-5) on generator power, 4 (-6) sheltering in place**
  - **2 confirmed fatalities**

Energy: **FL – 188k (-61k); GA – 120k (-58k); AL – 6k (-4k)** (ESF 6)

Region IV



## Transportation

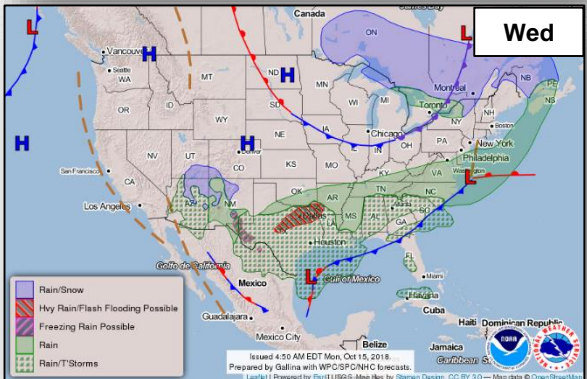
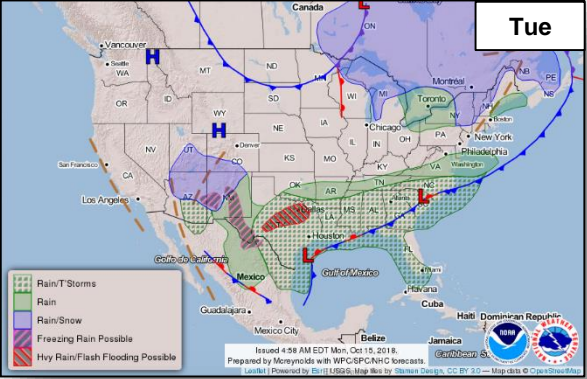
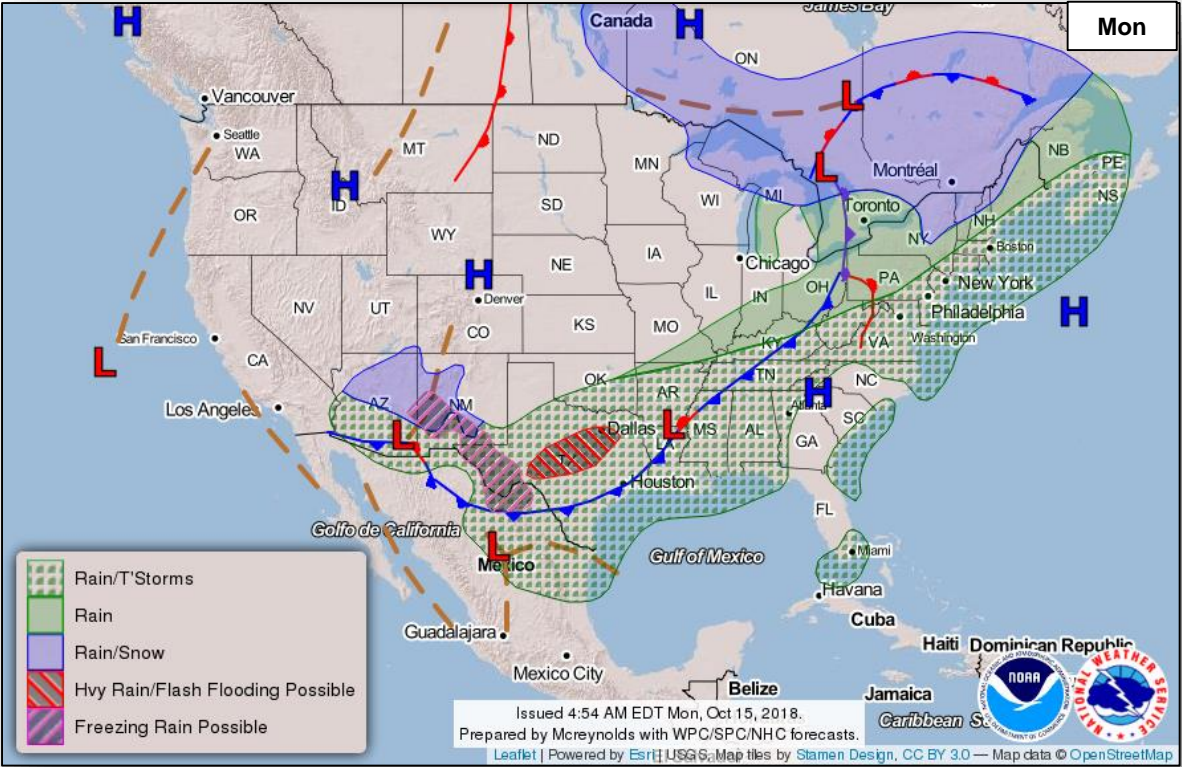
- Roads / Highways:
  - FL: **Road debris removal complete in 8 of 13 counties; portions of US-98 remain closed; 396 bridge inspections completed; 4 require repair**
  - GA: **All interstates and National Highway System routes and bridges open; 21 road closures**
- Port Conditions:
  - **Panama City & Gulf Intracoastal waterway open with restrictions**
- Railway
  - **Amtrak resumed service; 4 subdivisions of CSX remain out of service**
- Hazardous Waste
  - FL: **18 wastewater facilities are non-operational, 26 are partially operational, 25 with unknown status; of 18 chemical facilities, 16 are operational, 2 are shut down**
  - GA: **9 wastewater facilities non-operational; of 15 chemical facilities, 12 are operational, 3 are shut-down**



# National Weather Forecast



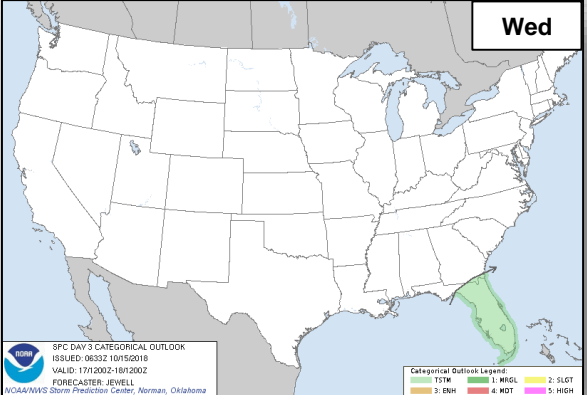
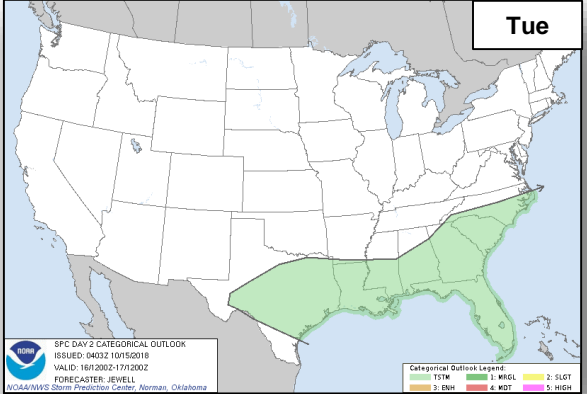
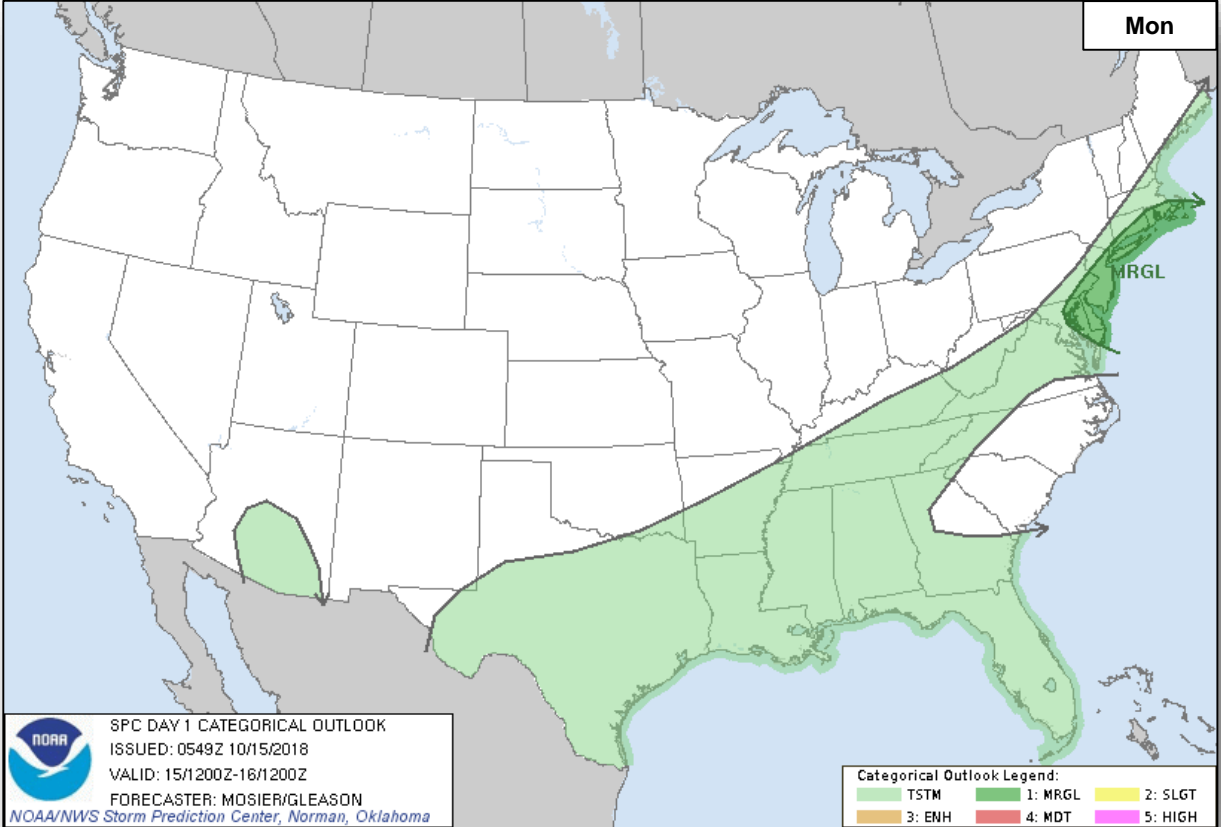
FEMA



# Severe Weather Outlook



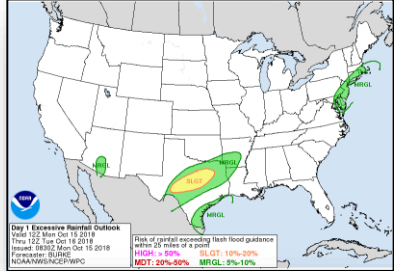
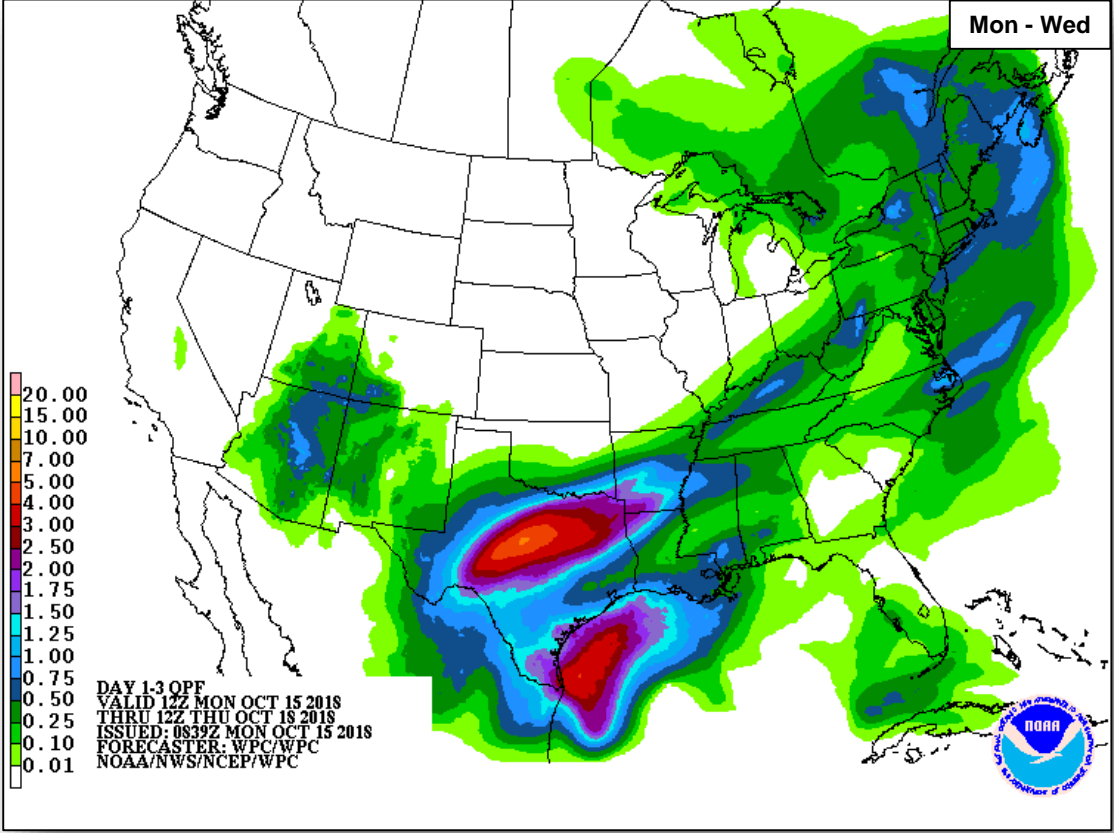
FEMA



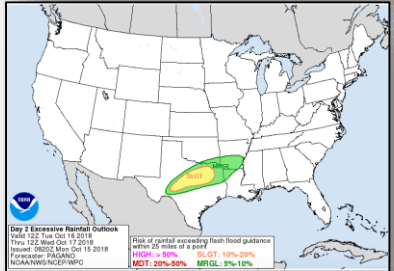
# Precipitation / Excessive Rainfall Forecast



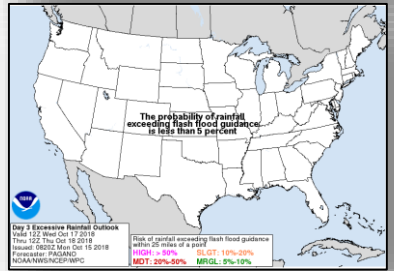
FEMA



Mon



Tue

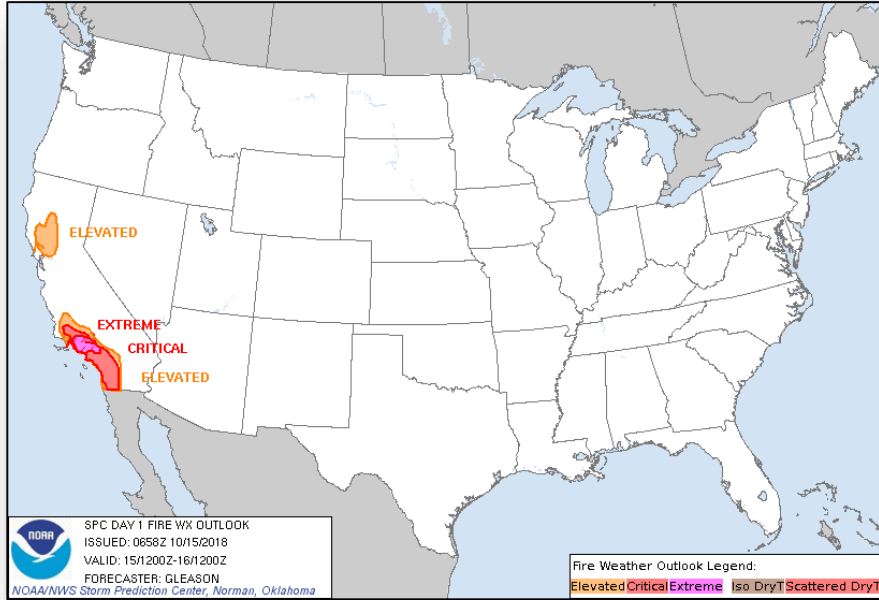


Wed

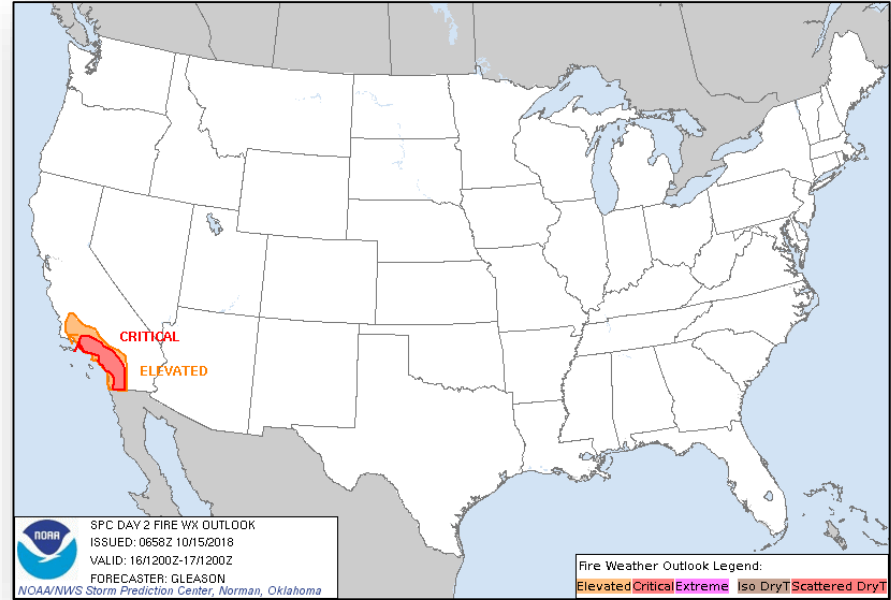
# Fire Weather Outlook



FEMA



**Monday**

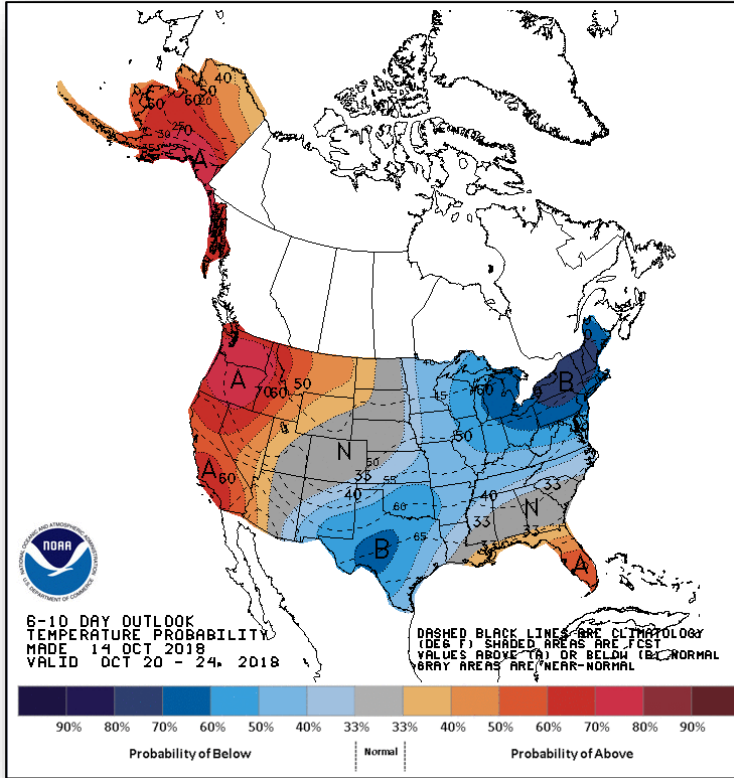


**Tuesday**

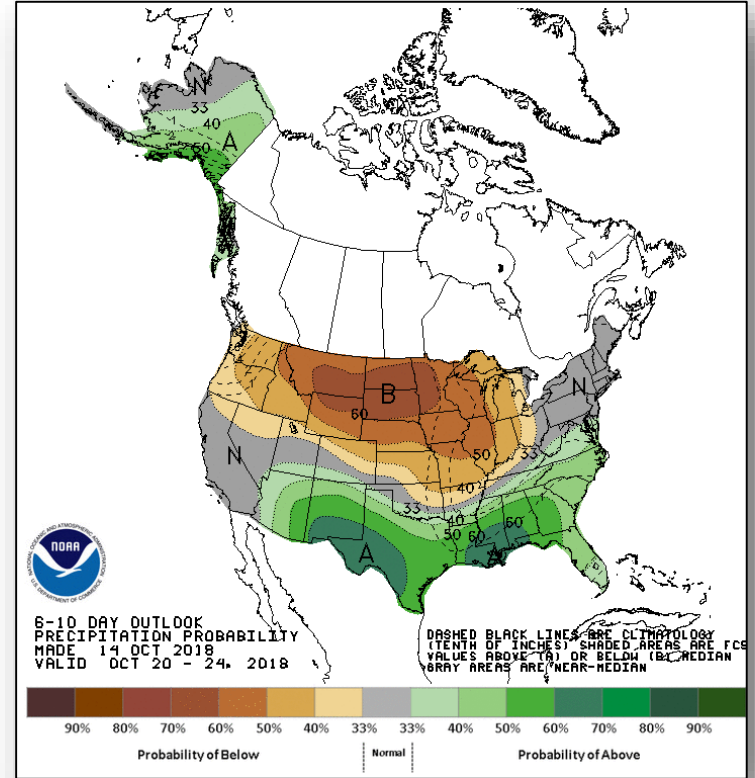
# Long Range Outlooks – Oct 20-24



FEMA



**6 - 10 Day Temperature Probability**



**6 - 10 Day Precipitation Probability**

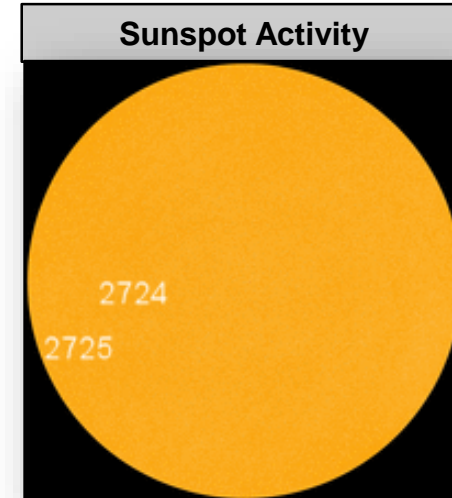
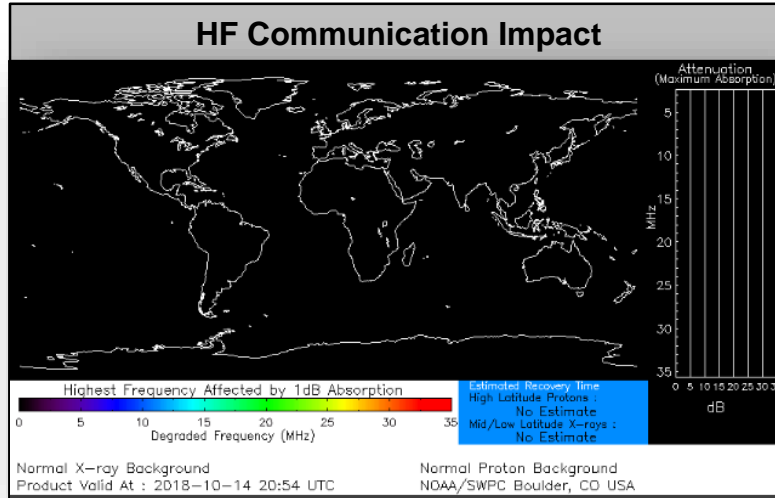
# Space Weather



FEMA

	Space Weather Activity	Geomagnetic Storms	Solar Radiation	Radio Blackouts
Past 24 Hours	None	None	None	None
Next 24 Hours	None	None	None	None

For further information on NOAA Space Weather Scales refer to: <http://www.swpc.noaa.gov/noaa-scales-explanation>



# Joint Preliminary Damage Assessments



FEMA

Region	State / Location	Event	IA / PA	Number of Counties		Start – End
				Requested	Completed	
III	PA	Severe Weather July 21-27, 2018	IA	12	12	9/5 – 9/27
			PA	14	12	9/5 – TBD
	PA	Severe Weather August 10-15, 2018	IA	14	14	9/5 – 9/26
			PA	15	14	9/5 – TBD

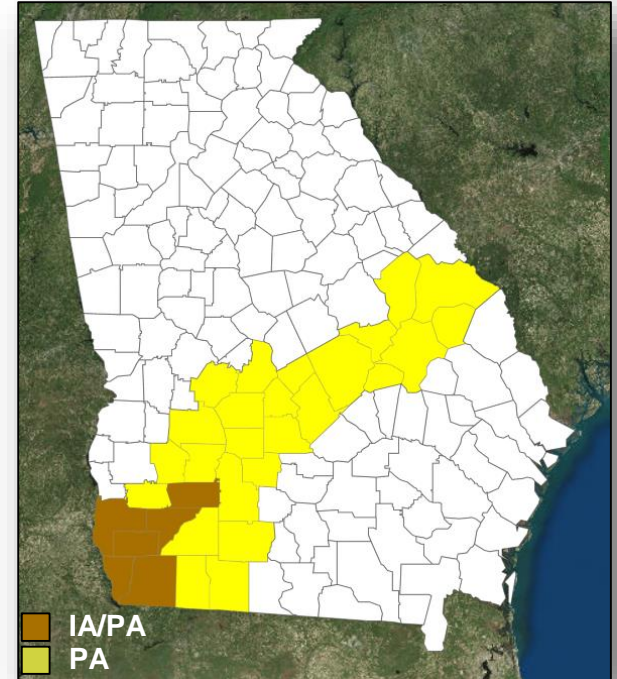
# Declaration Approved



FEMA

## **FEMA-4400-DR-GA**

- On October 14, 2018, expedited Major Disaster Declaration FEMA-4400-DR-GA was approved for the State of Georgia for Hurricane Michael beginning October 9, 2018 and continuing
- Provides:
  - Individual Assistance for 6 counties
  - Debris removal and emergency protective measures (Categories A & B), including direct federal assistance, under the Public Assistance program at 75 percent federal funding, for 31 counties
  - Hazard Mitigation statewide
- The FCO is Manny J. Toro





# Disaster Requests & Declarations



FEMA

Declaration Requests in Process					Requests APPROVED (since last report)	Requests DENIED (since last report)
<b>6</b>	IA	PA	HM	Date Requested	<b>1</b>	<b>0</b>
PA – DR (Appeal) Severe Storms, Flooding, and Landslides		X	X	September 7		
NC – DR (Appeal) Severe Storms, Flooding, Landslides, and Mudslides	X	X	X	September 19		
SD – DR (Appeal) Severe Storms and Flooding		X	X	September 25		
KS – DR Severe Storms, Straight-line Winds, and Flooding		X	X	September 25		
VA – DR Hurricane Florence		X	X	October 3		
WI – DR Severe Storms, Tornadoes, Straight-line Winds, Flooding and Landslides	X	X	X	October 4		
GA – DR Hurricane Michael	X	X	X	October 12	<b>October 14, 2018</b>	

# Disaster Amendments



FEMA

Amendment	Date Issued	Action
Amendment No. 6 to FEMA-4393-DR-NC	October 14, 2018	Adds 3 counties for Individual Assistance



# FEMA Readiness – Activation Teams



**FEMA**

Status		Activated Team	Activation Level	Activation Times	Reason / Comments
<b>NWC</b> (5 Teams)	Steady State				
<b>NRCC</b> (2 Teams)	Activated	Gold	Level II	24/7	Hurricane Michael
<b>HLT</b>	Activated				
<b>RWC / MOCs</b> (10 Regions)	Steady State				
<b>RRCCs</b> (10 Regions)	Activated	Region IV	Level I	24/7	Hurricane Michael

**Backup Regions: VI, VIII, & X**



# FEMA

**FEMA's mission is helping people before, during, and after disasters.**

Click [here](#) to subscribe to this briefing.