

The Disaster Center is dedicated to the idea that disaster mitigation is cost effective and individuals pursuing their own interest are the greatest potential force for disaster reduction.

Please consider making a small donation to the Disaster Center



When disaster mitigation is cost effective, we are on the road to bringing disasters to an end.



FEMA

Daily Operations Briefing

Wednesday, October 17, 2018

8:30 a.m. EDT

Significant Activity – Oct 16-17



FEMA

Significant Events: Tropical Storm Michael Response; Central Texas Flooding

Tropical Activity:

- Atlantic – No new tropical cyclones are expected during the next five days
- Eastern Pacific – Remnants of Tara; Disturbance 1 – High (90%); Disturbance 2 – Low (20%)
- Central Pacific – No new tropical cyclones are expected during the next five days
- Western Pacific – No activity affecting U.S. interests

Significant Weather:

- Flash Flooding across portions of TX
- Critical Fire Weather conditions – CA

Declaration Activity:

- Amendment No. 3 to FEMA-4399-DR-FL
- Amendment No. 1 to FEMA-4400-DR-GA
- Amendment No. 6 to FEMA-4394-DR-SC

Central Texas Flooding



FEMA

Situation:

Flooding/flash flooding is ongoing in central Texas due to extended rainfall amounts of up to 12 inches over the last 7 days, with 8-9 inches in isolated areas over the last 24 hours.

Safety and Security:

- Evacuations in effect throughout Llano, Burnet, and Travis counties
- Swift Water Rescue operations ongoing

Food, Water, Sheltering: Shelters / Occupants: 6 / 75

Energy: Negligible power outages reported statewide

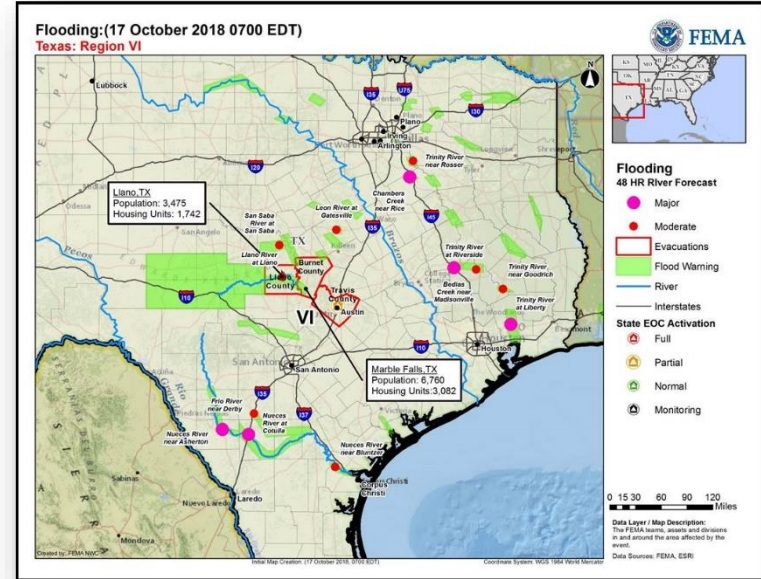
Communication: Cellular service is limited in some areas of central Texas

Transportation:

- Multiple secondary roads closed due to flooding; police are assisting with traffic control
- Two local bridges in Llano County collapsed/closed

Hazardous Waste:

- The Marble Falls wastewater plant is stressed due to flooding; residents asked to minimize water use



State/Local Response:

- TX EOC at Monitoring
- The Governor declared a State of Emergency

FEMA Region VI:

- RWC at Enhanced Watch (day shift)
- LNO deployed to TX EOC

FEMA HQ/Federal Response:

- NWC continues to monitor

Tropical Cyclone Michael



FEMA

State/Local Response

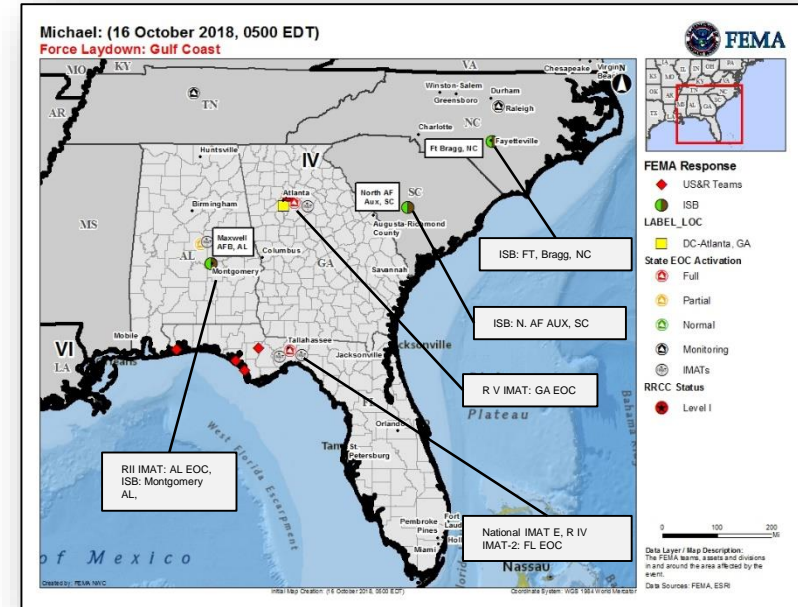
- FL EOC at Full Activation:
 - Emergency Declaration FEMA-3405-EM-FL approved October 9
 - Expedited Major Disaster Declaration FEMA-4399-DR-FL approved October 11
- GA EOC at Full Activation:
 - Emergency Declaration FEMA-3406-EM-GA approved on October 10
 - Expedited Major Disaster Declaration FEMA-4400-DR-GA approved October 14
- VA EOC at Monitoring, Governor declared State of Emergency, EMAC support
- TN EOC at Monitoring, EMAC support

FEMA Region IV

- **RRCC at Level II (day shift)**
- RWC at Enhanced Watch (night shift)
- LNOs deployed to FL, AL, and GA
- IMAT-2 deployed to FL EOC

FEMA HQ/Federal Response

- **NRCC at Level III, day shift only with select ESFs and NRCS Gold Team**
- National IMAT East deployed to FL EOC
- Region II IMAT deployed to AL EOC, **re-deploying to FL EOC today**
- Region V IMAT deployed to GA EOC



Tropical Cyclone Michael



Safety and Security

- US&R:
 - Pensacola, FL: Red IST, IST cache, FSARCG
 - 14 Human Remains (HR) dog teams in FL with Type I US&R
 - US&R Teams completed: 165 evacuations; 4 rescues, 42 evacuations (152 overall), 108 assists; 26,440 Shelter in place checks; 3,829 Animal Assists and 39,952 Structural Assessments. USCG completed more than 350 assists/ rescues and 1 animal rescue; searches remain ongoing in East Bay, Gulf, and Jackson counties

Food, Water, Sheltering

- Shelters / Occupants: FL: 21 / 2,350; GA: 3 / 203 (ESF 6 as of 5:50 a.m. EDT)
- FL: 46 active boil water advisories; 49 water utilities partially operational, 72 non-operational, 77 with unknown status
- GA: 38 (+4) active boil water advisories; 28 water utilities partially operational; 63 non-operational; 486 status unknown
 - Received 39,000 (+25k) tarps, shipping 27,000 more by October 17

Health and Medical

- FL: Hospitals: 4 closed in 3 counties, 3 partially open (ER only), 4 on generator power, 3 on partial generator power; 2 dialysis centers closed; nursing homes: 7 closed, 8 on generator power, 1 re-entry complete, Assisted Living Facilities: 14 closed, 9 on generator power, 8 on partial generator power, 1 re-entry in progress
 - 1 confirmed fatality
- GA: Hospitals: All have commercial power
 - 3 confirmed fatalities
- Media reporting 27 Michael related fatalities across impact areas

Energy:

- Power outages: FL – 135k (-11k); GA – 56k (-27k) (SLB as of 5:30 a.m. EDT)
- USACE: 3 generator installs complete, 8 installs in progress, 18 assessments complete

Region IV

FL



GA



Transportation

- Roads / Highways:
 - FL: Damage assessments ongoing
 - GA: All interstates and National Highway System routes and bridges open; 21 road closures
- Port Conditions:
 - Port of Panama City Open (daylight operations only) due to destroyed ranges; anticipated date to re-open October 27
- Railway
 - FL: Two CSX subdivisions have suspended service. Three short lines remain suspended with partial restoration estimated for October 19

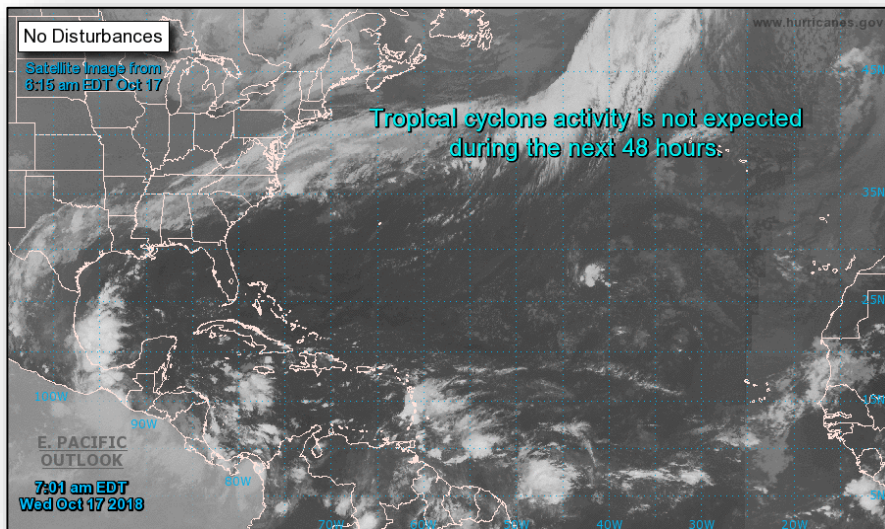
Hazardous Waste

- FL: 16 wastewater facilities are non-operational, 28 partially operational, 22 (-2) with unknown status; of 18 chemical facilities, 16 (+4) are operational and 2 (-1) are shut down
- GA: 9 wastewater facilities are non-operational; 22 are partially operational; 110 with unknown status; of 15 chemical facilities, 12 are operational and 3 are shut down

Tropical Outlook – Atlantic



FEMA



48 Hour Outlook



5 Day Outlook

Tropical Outlook – Eastern Pacific

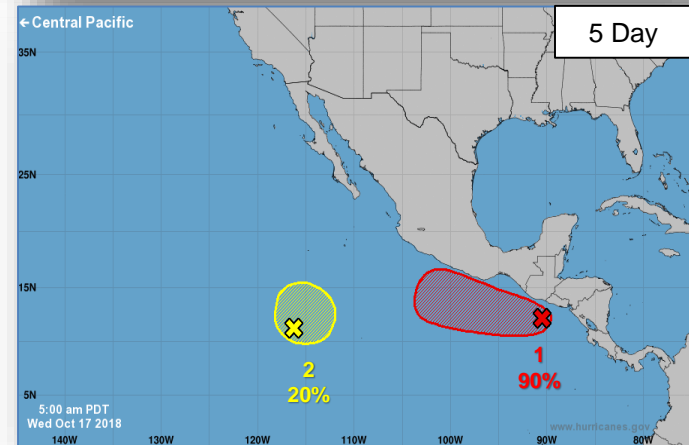
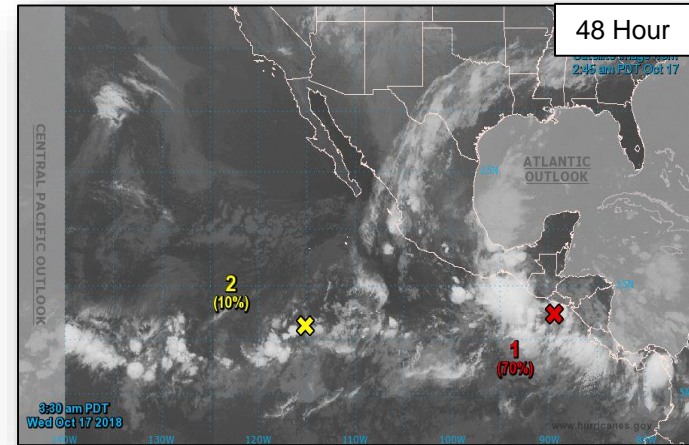


Disturbance 1 (as of 2:00 a.m. EDT)

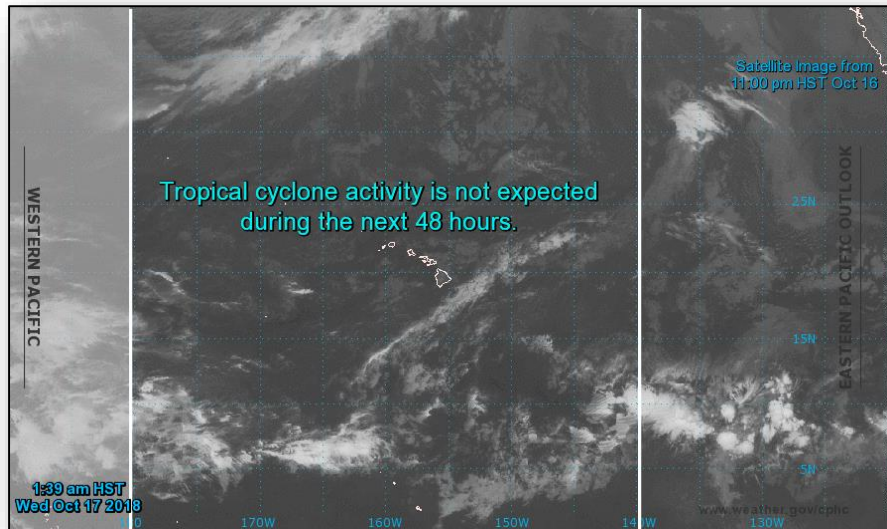
- Located over Central America, southeastern Mexico, and the far eastern North Pacific Ocean
- Development of a tropical depression likely by Friday
- Formation chance next 48 hours – High (80%)
- Formation chance next 5 days – High (90%)

Disturbance 2 (as of 2:00 a.m. EDT)

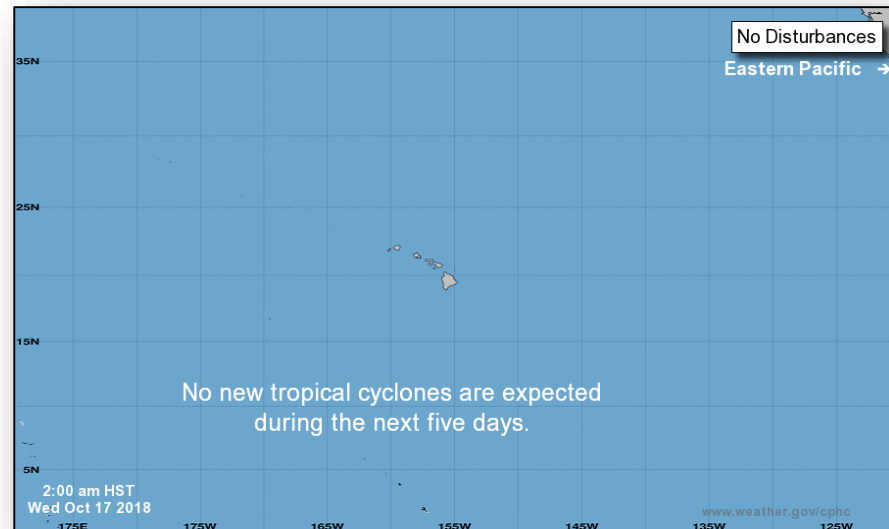
- Located 900 miles SSW of Baja California
- Some slow development is possible over the next several days
- Formation chance next 48 hours – Low (10%)
- Formation chance next 5 days – Low (20%)



Tropical Outlook – Central Pacific



48 Hour Outlook

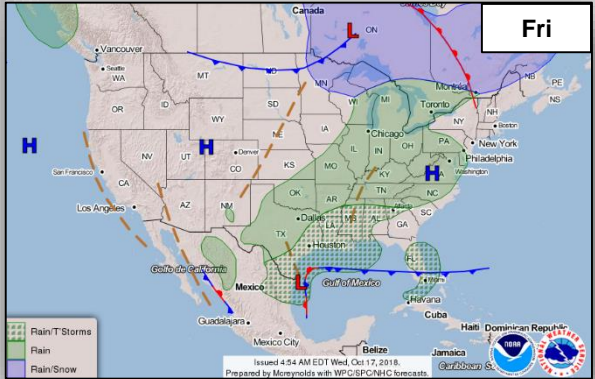
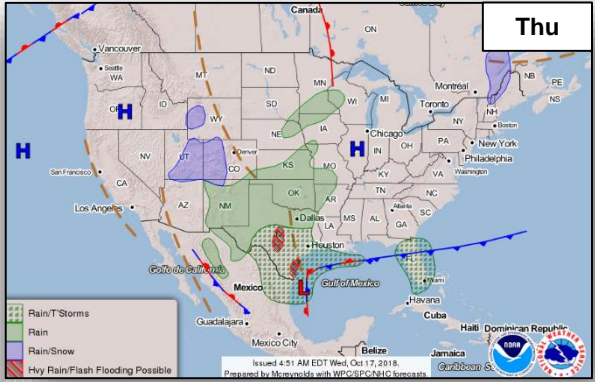
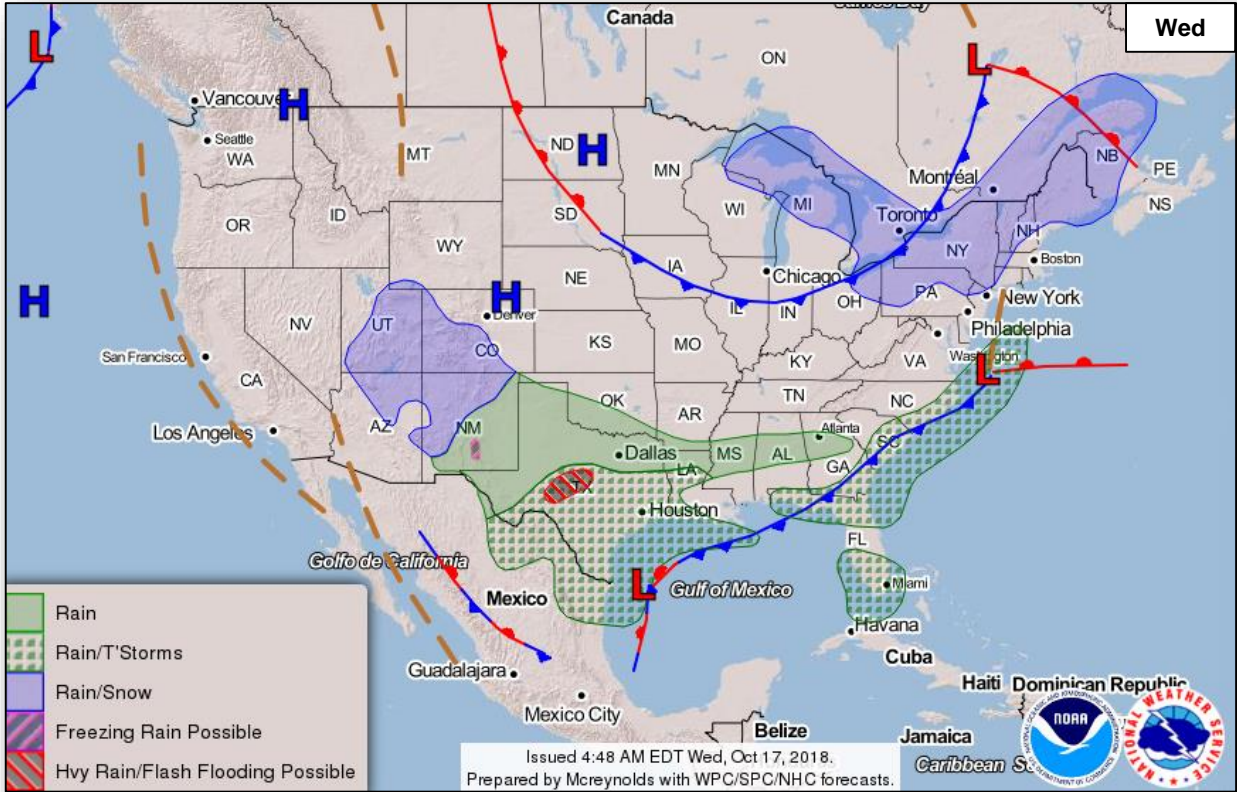


5 Day Outlook

National Weather Forecast



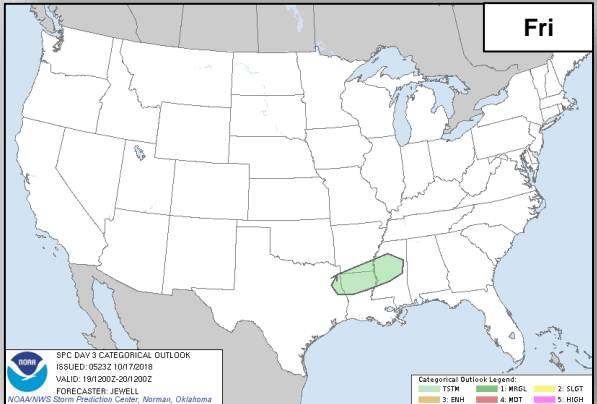
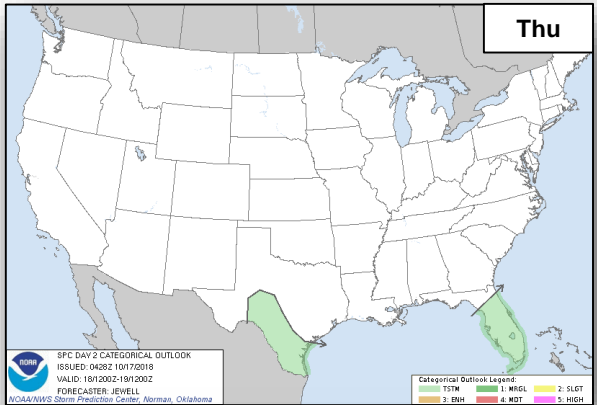
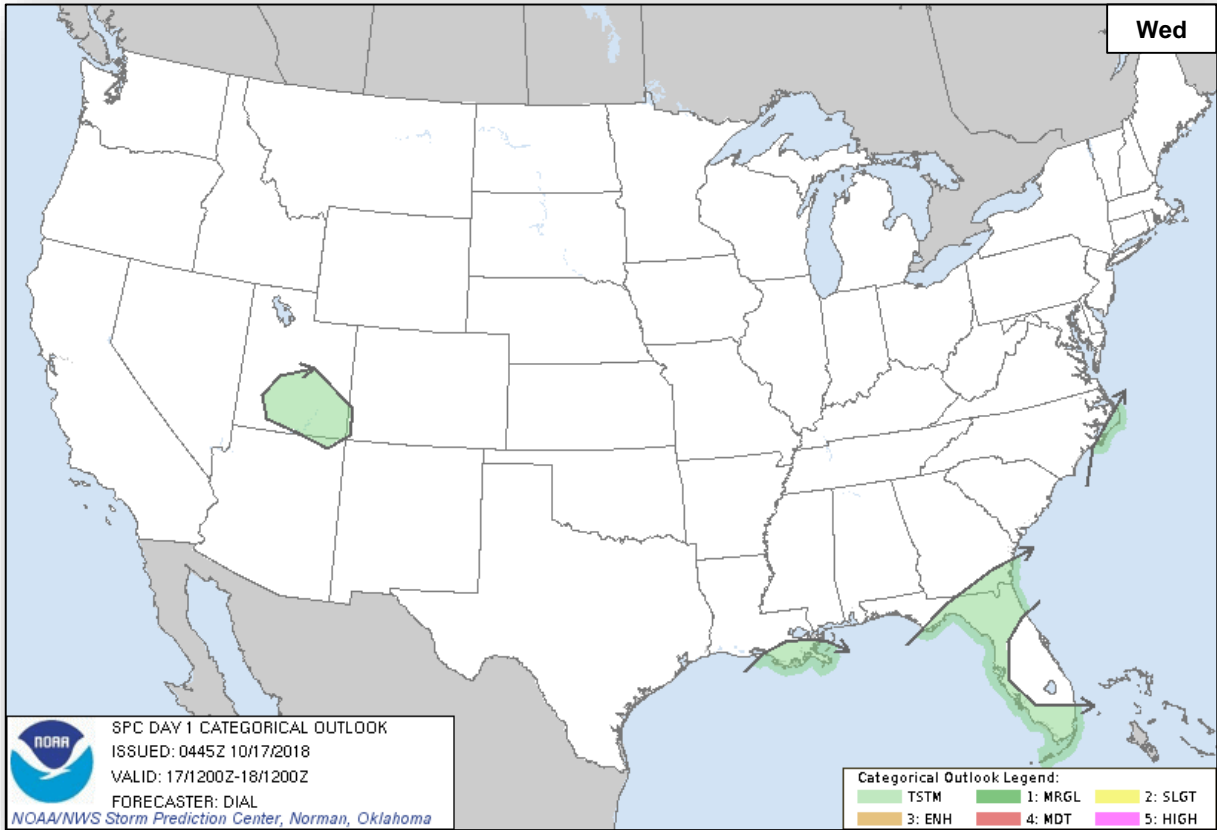
FEMA



Severe Weather Outlook



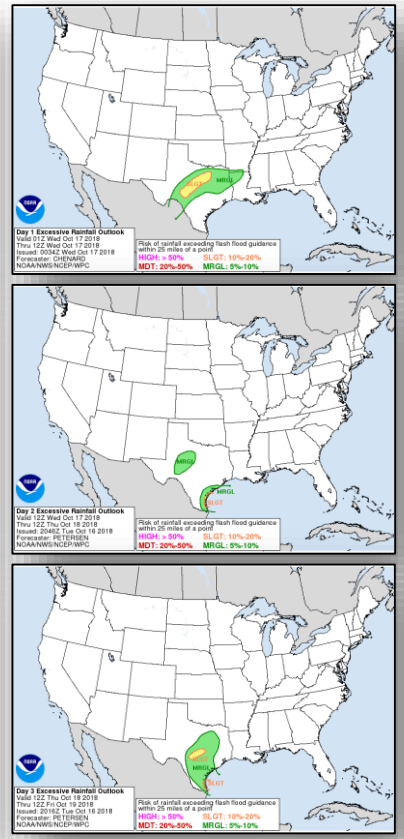
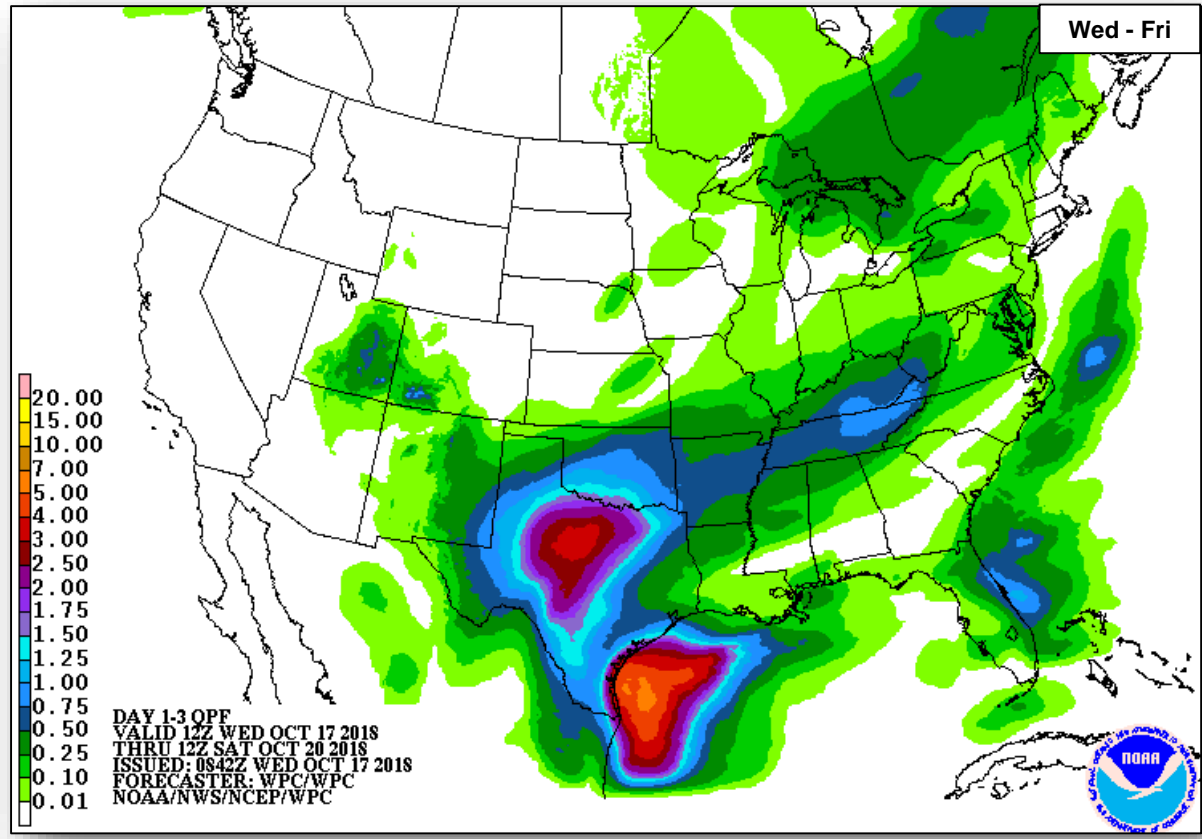
FEMA



Precipitation / Excessive Rainfall Forecast



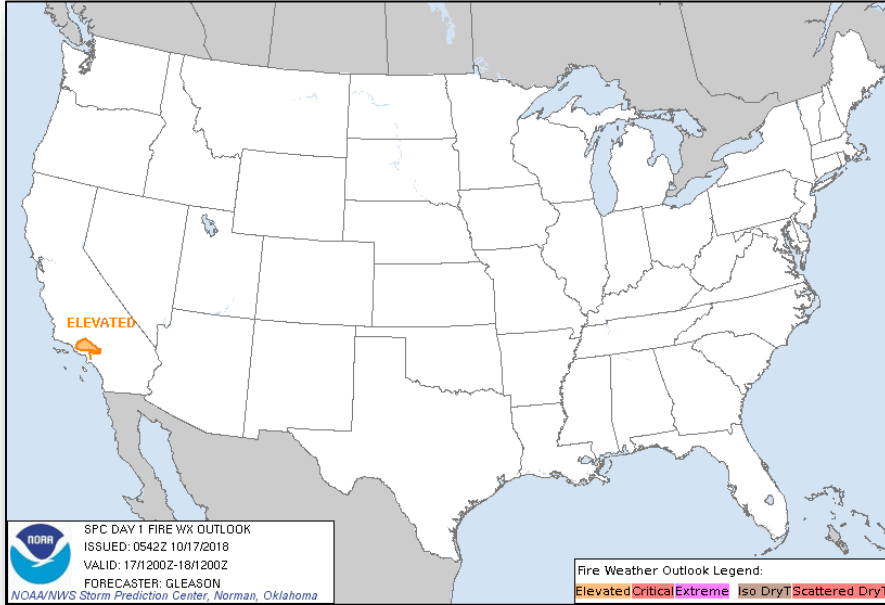
FEMA



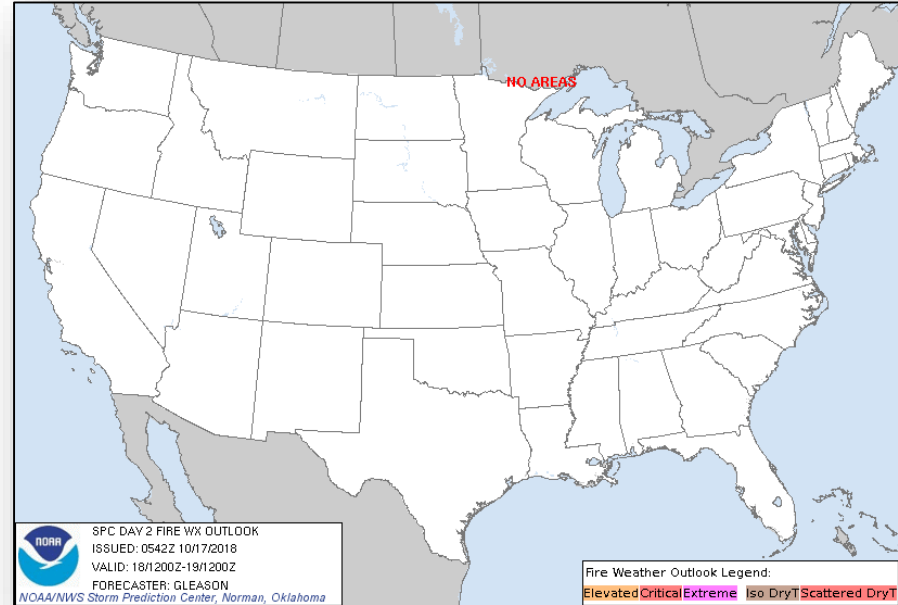
Fire Weather Outlook



FEMA



Wednesday

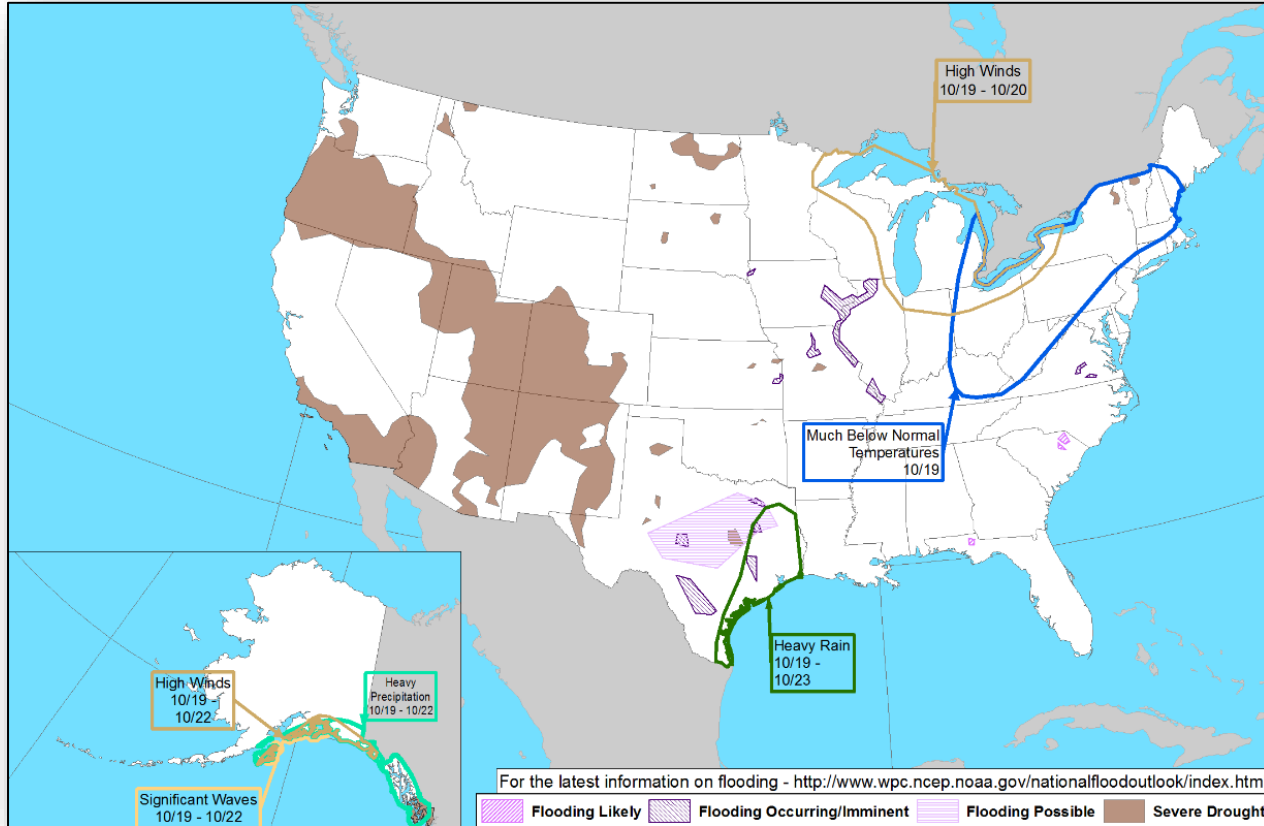


Thursday

Hazards Outlook – Oct 19-23



FEMA



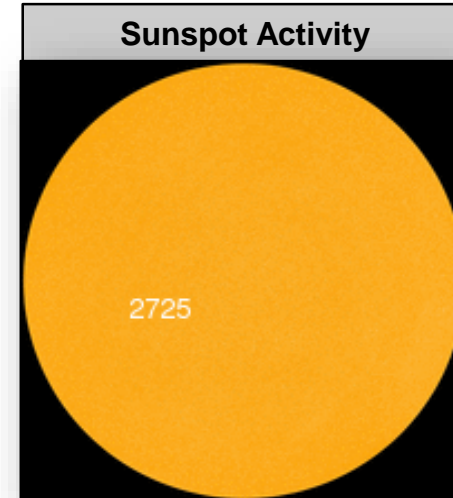
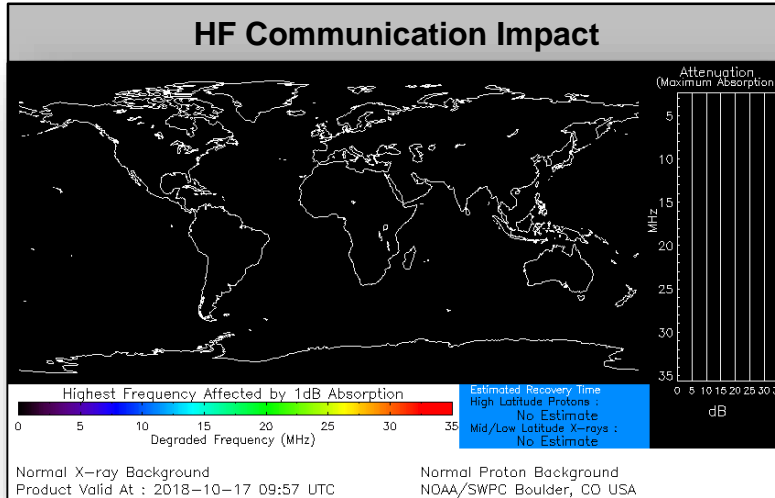
Space Weather



FEMA

	Space Weather Activity	Geomagnetic Storms	Solar Radiation	Radio Blackouts
Past 24 Hours	None	None	None	None
Next 24 Hours	None	None	None	None

For further information on NOAA Space Weather Scales refer to: <http://www.swpc.noaa.gov/noaa-scales-explanation>



Joint Preliminary Damage Assessments



FEMA

Region	State / Location	Event	IA / PA	Number of Counties		Start – End
				Requested	Completed	
III	PA	Severe Weather July 21-27, 2018	IA	12	12	9/5 – 9/27
			PA	14	12	9/5 – TBD
	PA	Severe Weather August 10-15, 2018	IA	14	14	9/5 – 9/26
			PA	15	14	9/5 – TBD
	VA	Hurricane Florence September 8-21, 2018	IA	0	0	N/A
			PA	37	16	9/28 – TBD

Disaster Requests & Declarations



FEMA

Declaration Requests in Process					Requests APPROVED (since last report)	Requests DENIED (since last report)
3	IA	PA	HM	Date Requested	0	0
NC – DR (Appeal) Severe Storms, Flooding, Landslides, and Mudslides	X	X	X	September 19		
KS – DR Severe Storms, Straight-line Winds, and Flooding		X	X	September 25		
WI – DR Severe Storms, Tornadoes, Straight-line Winds, Flooding and Landslides	X	X	X	October 4		

Disaster Amendments



FEMA

Amendment	Date Issued	Action
Amendment No. 3 to FEMA-4399-DR-FL	October 16, 2018	Adds 1 counties for Individual Assistance
Amendment No. 1 to FEMA-4400-DR-GA	October 16, 2018	Adds 7 counties for Individual Assistance
Amendment No. 6 to FEMA-4394-DR-SC	October 16, 2018	Adds 14 counties for Public Assistance

Readiness – Deployable Teams and Assets



FEMA

Resource	Force Strength	Available	Deployed	Other	Cadres with 25% or Less Availability
IM Workforce	12,283 ▲	2,236 ▼ 18%	6,573 ▲	3,474	DSA 9% (76/849); EA 19% (106/568); EHP 7% (29/428); ER 0% (0/44); FL 20% (32/157); FM 22% (60/271); HM 14% (145/1,013); HR 15% (37/249); IT 12% (75/631); LOG 9% (112/1,192); OPS 17% (48/278); PA 10% (194/1,910); PLAN 18% (62/343); SAF 2% (1/57); SEC 3% (4/117)
National IMATs* (1-2 Teams)	East : Composite: West:	Deployed Deployed B-2			
Regional IMATs (≤ 3 Teams)	Assigned: Available: PMC / NMC: Deployed:	13 1 (-1) 3 (+1) 9			
National ISBs (0 Teams)	Team A Team B Team C	Deployed Deployed Deployed			
US&R (>33-65%)	Assigned: Available: PMC / NMC: Deployed:	28 16 2 10			
MERS (>33-65%)	Assigned: Available: PMC / NMC: Deployed:	36 20 0 16			
FCO (≥3 Type I)	Assigned: Available: PMC / NMC: Deployed:	32 9 (-2) 1 22 (+2)			
FDRC (≥3)	Assigned: Available: PMC / NMC: Deployed:	13 4 (+1) 2 7 (-1)			

As of 3:00 a.m. EDT Oct 17, 2018 Created by: FEMA NWC

* **B-2 Status:** Assemble ≤ 2-hrs, On Site ≤ 18-hrs; **B-48 Status:** Assemble and deploy ≤ 48hrs; **Charlie Status:** No team assemble time requirement

FEMA Readiness – Activation Teams



Status		Activated Team	Activation Level	Activation Times	Reason / Comments
NWC (5 Teams)	Steady State				
NRCC (2 Teams)	Activated	Gold	Level III	Day shift	Hurricane Michael
HLT	Activated				
RWC / MOCs (10 Regions)	Activated	Region IV	Enhanced Watch	Night shift only	Hurricane Michael
RRCCs (10 Regions)	Activated	Region IV	Level II	Day shift	Hurricane Michael

Backup Regions: **VI, VIII, & X**



FEMA

FEMA's mission is helping people before, during, and after disasters.

Click [here](#) to subscribe to this briefing.