

The Disaster Center is dedicated to the idea that disaster mitigation is cost effective and individuals pursuing their own interest are the greatest potential force for disaster reduction.

Please consider making a small donation to the Disaster Center



When disaster mitigation is cost effective, we are on the road to bringing disasters to an end.



# FEMA

## Daily Operations Briefing

Monday, October 22, 2018

8:30 a.m. EDT

# Central Texas Flooding *FINAL*



FEMA

## Situation:

Abundant moisture will interact with a stalled front in the Gulf of Mexico this week to generate locally heavy rainfall across the Gulf Coast region.

**Safety and Security:** SAR resources are prepositioned/staged and on standby

## **Food, Water, Sheltering:**

- 6 shelters / 2 (-19) Occupants (*FEMA Region VI EXSUM, October 21*)
- Boil water advisory I/E for Kingsland & Austin
- Three PODs (-1) distributing water/ice in the communities of Kingsland, Horseshoe Bay and Granite Shoals

**Communication:** Cell service is intermittent in the Kingsland-Llano county area

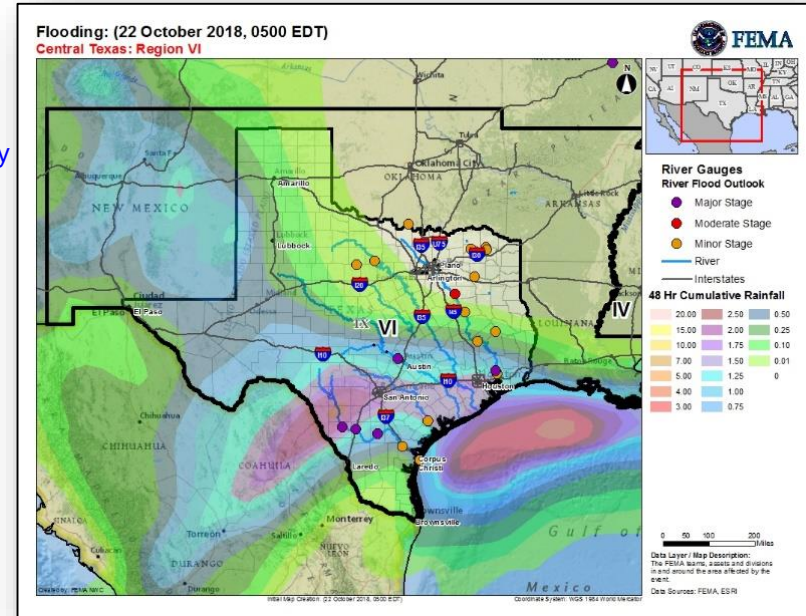
**Hazardous Waste:** Waste water plants remain operable with some restrictions

## **State/Local Response:**

- TX EOC at [Monitoring](#)
- The Governor declared a State of Emergency for 54 counties

## **FEMA Response:**

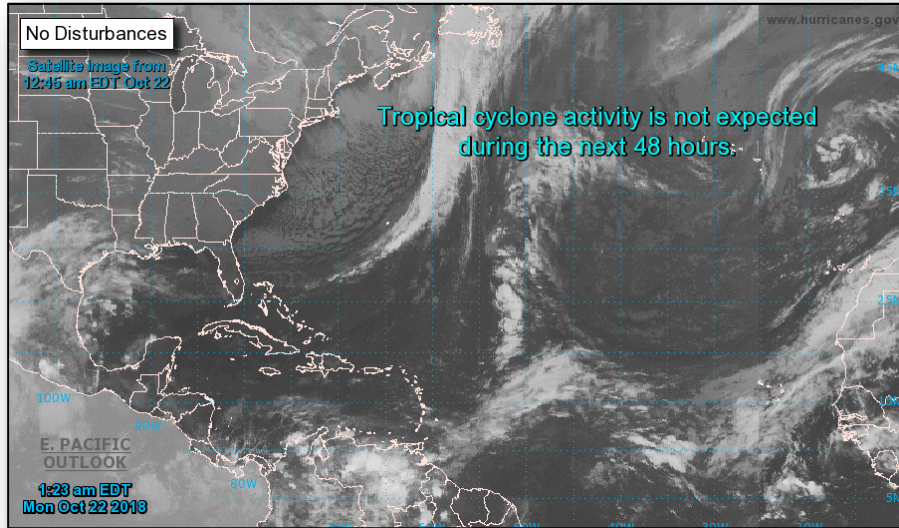
- Region VI RWC at Enhanced Watch (day shift)
- 4 LNOs deployed to TX EOC
- PDA teams on standby
- FEMA HQ NWC continues to monitor
- No requests for FEMA assistance; no unmet needs



# Tropical Outlook – Atlantic



FEMA



***48 Hour Outlook***



***5 Day Outlook***

# Tropical Outlook – Eastern Pacific



## Hurricane Willa (CAT-4) (Advisory #9 as of 5:00 a.m. EDT)

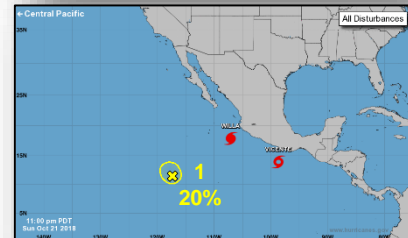
- About 175 miles SSW of Cabo Corrientes, Mexico
- Moving N at 7 mph
- Maximum sustained winds 155 mph
- Hurricane-force winds extend outward up to 30 miles
- Tropical-storm-force winds extend out 90 miles

## Tropical Storm Vicente (Advisory #12 as of 5:00 a.m. EDT)

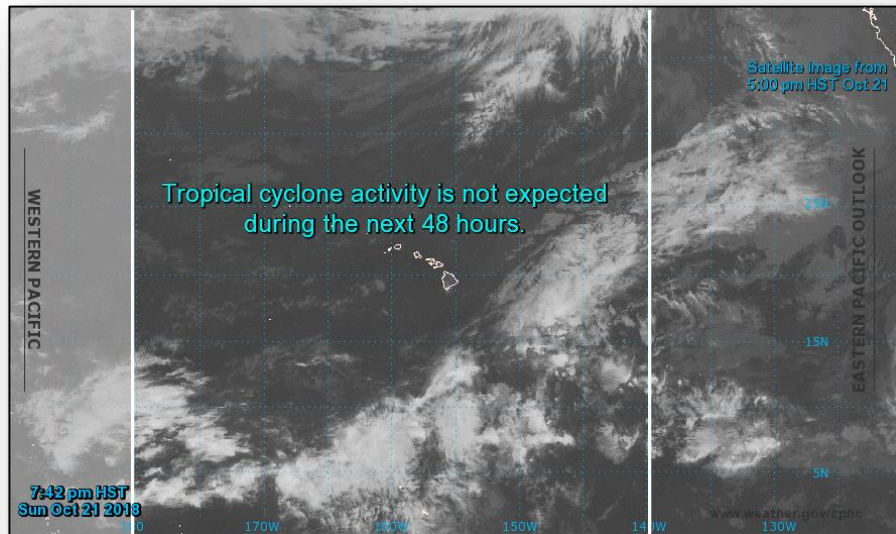
- Located 195 miles S of Acapulco, Mexico
- Moving W at 10 mph
- Maximum sustained winds 45 mph
- Expected to become a tropical depression tonight or Tuesday
- Tropical-storm-force winds extend out 45 miles

## Disturbance 1 (as of 2:00 a.m. EDT)

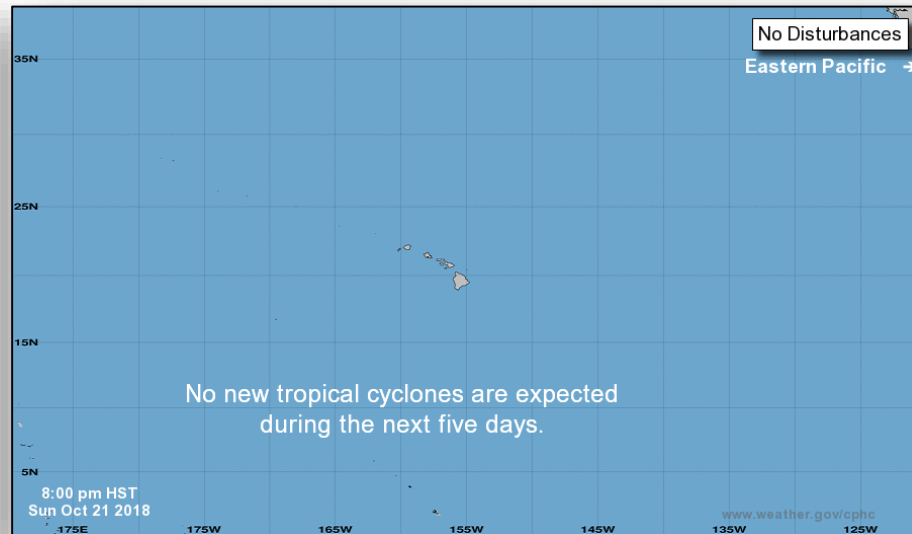
- Located 950 miles SSW of southern tip of Baja California
- Some slow development is possible
- Formation chance through 48 hours: Low (20%)
- Formation chance through 5 days: Low (20%)



# Tropical Outlook – Central Pacific



**48 Hour Outlook**



**5 Day Outlook**



# Tropical Outlook – Western Pacific



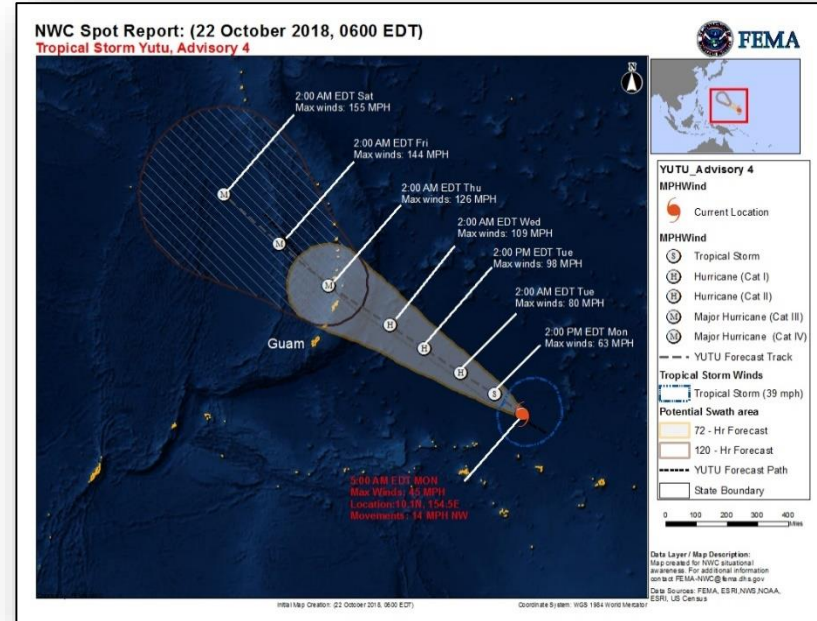
FEMA

## Tropical Storm Yutu (Warning # 4 as of 5:00 a.m. EDT)

- Located about 700 miles ESE of Andersen AB, Guam and 685 miles ESE of Saipan
- Maximum sustained winds 45 mph; Moving NW at 14 mph
- Forecast to become a CAT 3 or 4 typhoon Wednesday or Thursday
- Closest point of approach (CPA) to Guam is 167 miles at 1:00 pm EDT on October 24, and to Saipan, CNMI is 30 miles at 2:00 pm EDT on October 24
- Tropical storm force winds extend 140 miles
- Typhoon watches in effect for Tinian and Saipan; Tropical Storm watch for Rota

## Preparations

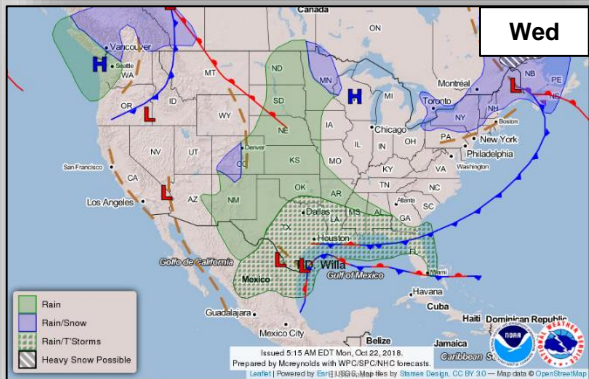
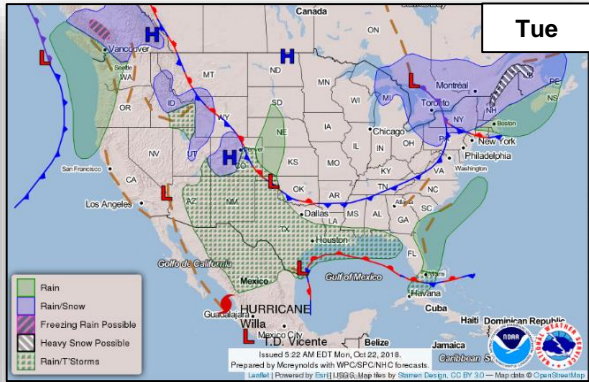
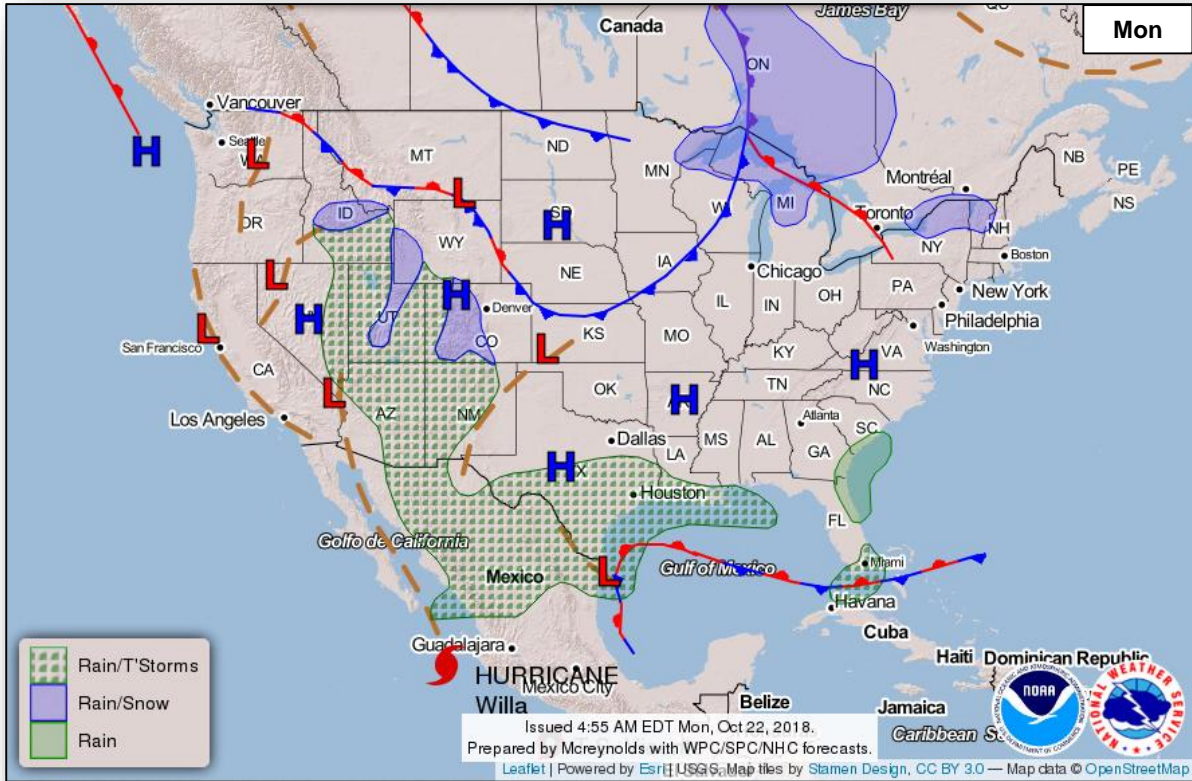
- Guam EOC at Normal Operations
- FEMA Region IX RWC at Steady State, continues to monitor
- FEMA Region IX IMAT-2 and LNOs deployed to Guam
- FEMA ISB team and MERS assets deployed to Guam
- HHS deployed DMAT and Incident Response Coordination Team (ICRT) to Guam



# National Weather Forecast



FEMA

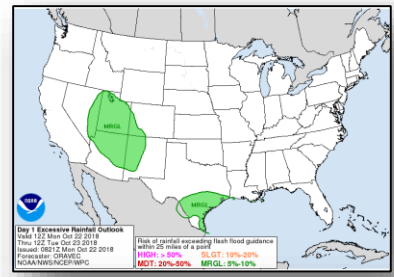
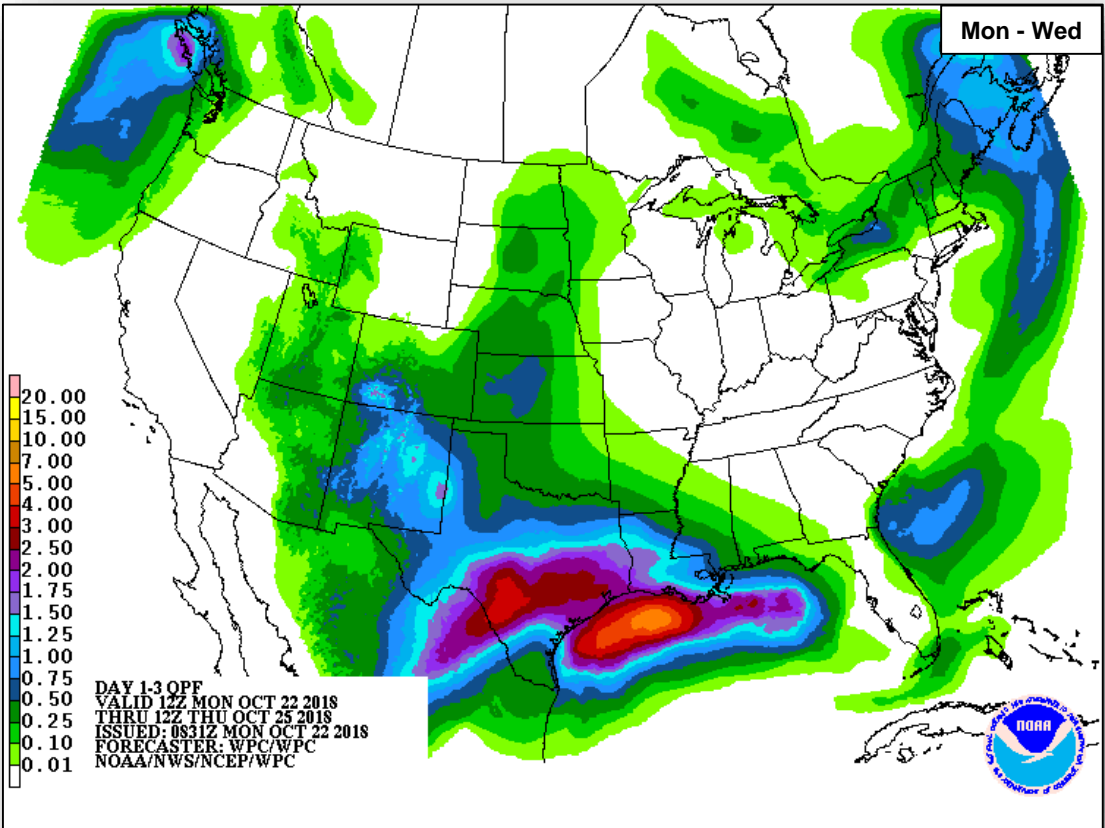




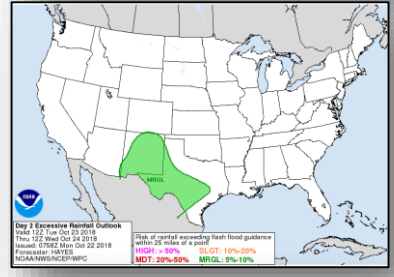
# Precipitation / Excessive Rainfall Forecast



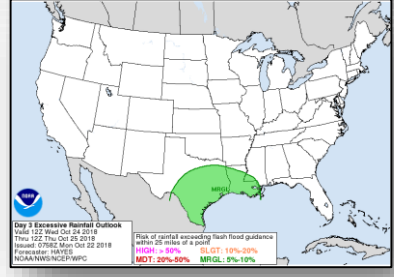
FEMA



Mon



Tue

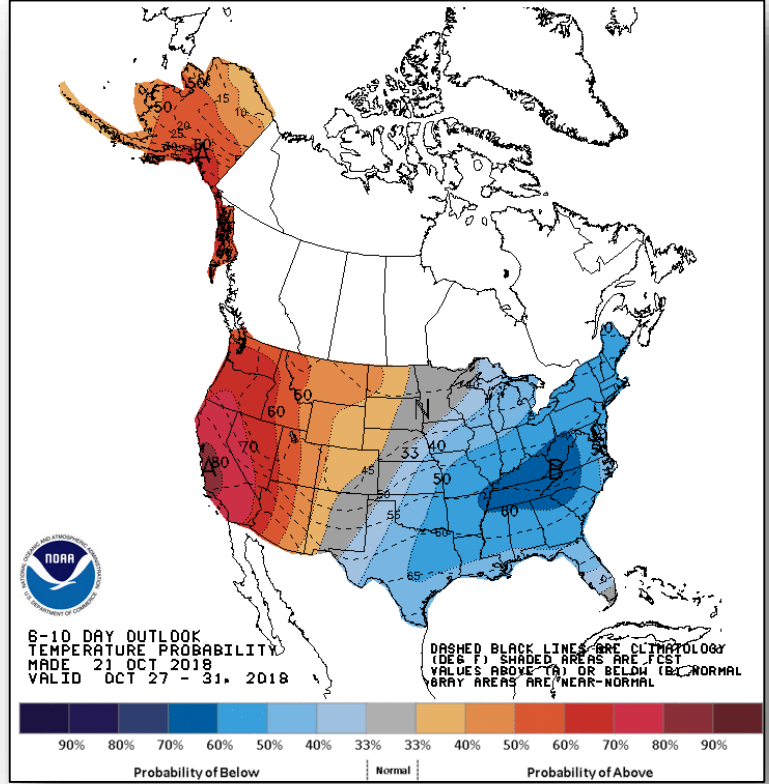


Wed

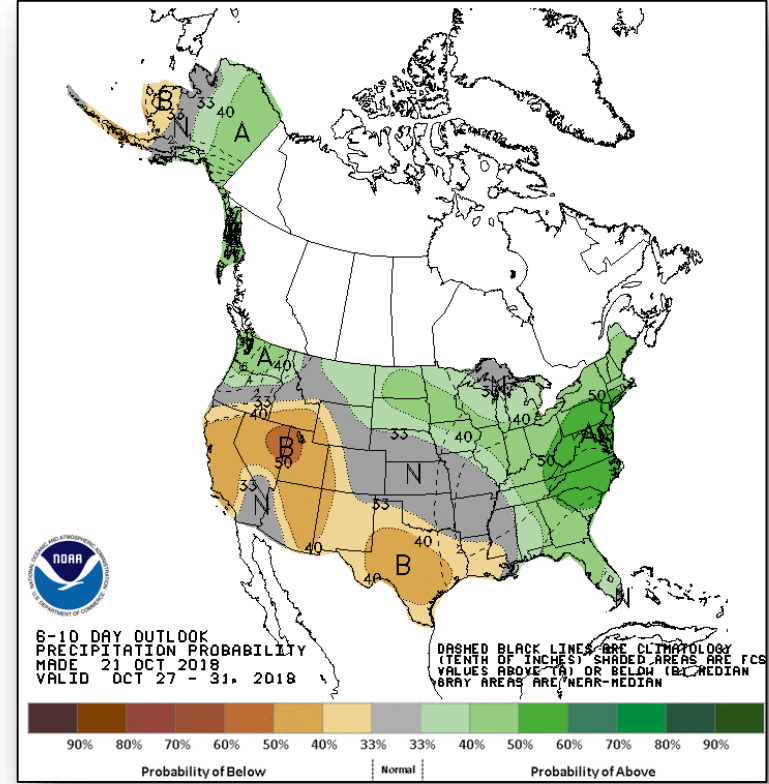
# Long Range Outlooks – Oct 27-31



FEMA



**6 - 10 Day Temperature Probability**



**6 - 10 Day Precipitation Probability**

# Winter Outlook



FEMA

NOAA Climate Prediction Center winter outlook for December 2018 to February 2019:

## Temperature

- Warmer than normal across much of northern and western U.S; No part favored for Below Average temperatures

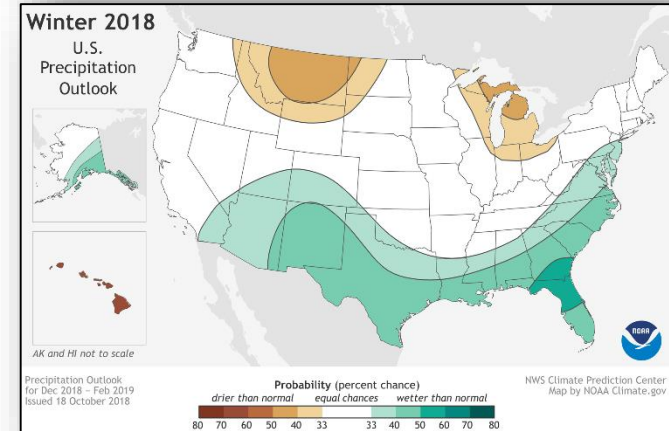
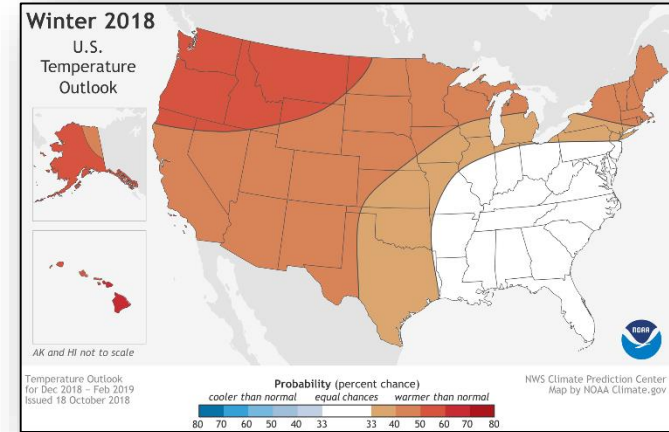
## Precipitation

- Wetter than average across southern tier of U.S up to Mid-Atlantic; north FL and south GA have the greatest odds for above average precipitation
- Drier than average in Northern Rockies and Plains, Great Lakes and northern Ohio Valley

## Drought

- Drought conditions likely to persist across Southwest, southern California, Great Basin, Central Rockies, Northern Plains and interior Pacific Northwest
- Drought conditions likely to improve in AZ, NM and southern UT and CO, the coastal Pacific Northwest and the Central Plains

LINK: [NOAA](https://www.noaa.gov)



# Disaster Requests & Declarations



FEMA

Declaration Requests in Process					Requests APPROVED (since last report)	Requests DENIED (since last report)
1	IA	PA	HM	Date Requested	0	0
NC – DR (Appeal) Severe Storms, Flooding, Landslides, and Mudslides	X	X	X	September 19, 2018		

# Joint Preliminary Damage Assessments



FEMA

Region	State / Location	Event	IA / PA	Number of Counties		Start – End
				Requested	Completed	
III	PA	Severe Weather August 10-15, 2018	IA	14	14	9/5 – 9/26
			PA	15	10	9/5 – TBD
	PA	Severe Weather July 21-27, 2018	IA	12	12	9/5 – 9/27
			PA	14	14	9/5 – 10/19
IV	AL	Hurricane Michael October 8, 2018 and continuing	IA	4	0	10/23 - TBD
			PA	6	0	10/23 - TBD
IX	Tohono O'odham Nation (AZ)	Flooding September 30 – October 2, 2018	IA	1	0	10/23 – TBD
			PA	1	0	10/23 - TBD



# Readiness – Deployable Teams and Assets



Resource	Force Strength	Available	Deployed	Other	Cadres with 25% or Less Availability
<b>IM Workforce</b>	12,293 ▼	2,082 ▼ 17%	6,737 ▲	3,474	DSA 7% (60/849); EA 21% (119/570); EHP 7% (28/427); ER 2% (1/44); FL 16% (25/159); FM 22% (59/273); HM 12% (122/1,020); HR 13% (32/249); IA 23% (664/2,912); IT 10% (65/635); LOG 10% (123/1,191); OPS 17% (46/276); PA 9% (175/1,910); PLAN 17% (57/343); SAF 7% (4/57); SEC 2% (2/117)
<b>National IMATs*</b> (1-2 Teams)	East : Composite: West:	Deployed Deployed B-2			
<b>Regional IMATs</b> (≤ 3 Teams)	Assigned: Available: PMC / NMC: Deployed:	13 1 3 9			
<b>National ISBs</b> (0 Teams)	Team A Team B Team C	Deployed Deployed Deployed			
<b>US&amp;R</b> (>66%)	Assigned: Available: PMC / NMC: Deployed:	28 22 (+6) 6 (-6) 0			
<b>MERS</b> (>33-65%)	Assigned: Available: PMC / NMC: Deployed:	36 19 0 17			
<b>FCO</b> (≥3 Type I)	Assigned: Available: PMC / NMC: Deployed:	32 7 1 24			
<b>FDRC</b> (≥3)	Assigned: Available: PMC / NMC: Deployed:	13 4 2 7			

As of 3:00 a.m. EDT Oct 22, 2018 Created by: FEMA NWC

\* **B-2 Status:** Assemble ≤ 2-hrs, On Site ≤ 18-hrs; **B-48 Status:** Assemble and deploy ≤ 48hrs; **Charlie Status:** No team assemble time requirement

# FEMA Readiness – Activation Teams



Status		Activated Team	Activation Level	Activation Times	Reason / Comments
<b>NWC</b> (5 Teams)	Steady State				
<b>NRCC</b> (2 Teams)	Not Activated				
<b>HLT</b>	Activated				
<b>RWC / MOCs</b> (10 Regions)	Activated	Region VI	Enhanced Watch	8:00 a.m. – 8:00 p.m. EDT	Texas Flooding
<b>RRCCs</b> (10 Regions)	Activated	Region IV	Level III	8:00 a.m. – 6:00 p.m. EDT	Hurricane Michael

Backup Regions: **VI, X and VIII**



# FEMA

**FEMA's mission is helping people before, during, and after disasters.**

Click [here](#) to subscribe to this briefing.