

The Disaster Center is dedicated to the idea that disaster mitigation is cost effective and individuals pursuing their own interest are the greatest potential force for disaster reduction.

Please consider making a small donation to the Disaster Center



When disaster mitigation is cost effective, we are on the road to bringing disasters to an end.



FEMA

Daily Operations Briefing

Saturday, November 10, 2018

8:30 a.m. EST

Significant Activity – Nov 9-10



FEMA

Significant Events:

- CA Wildfires
- Tropical Cyclone Yutu Recovery

Tropical Activity:

- Atlantic – Disturbance 1: Low (near 0%)
- Eastern Pacific – No new tropical cyclones are expected during the next 5 days
- Central Pacific – No new tropical cyclones are expected during the next 5 days
- Western Pacific – No activity affecting U.S. interests

Significant Weather:

- Critical fire weather and Red Flag Warning continue through the weekend – CA
- Freezing Rain – Northern New England
- Snow, heavy in places – Central/Southern Rockies and Northern Rockies to Upper Great Lakes

Declaration Activity:

- Emergency Disaster Approved – California

California Wildfires



FEMA

Current Situation

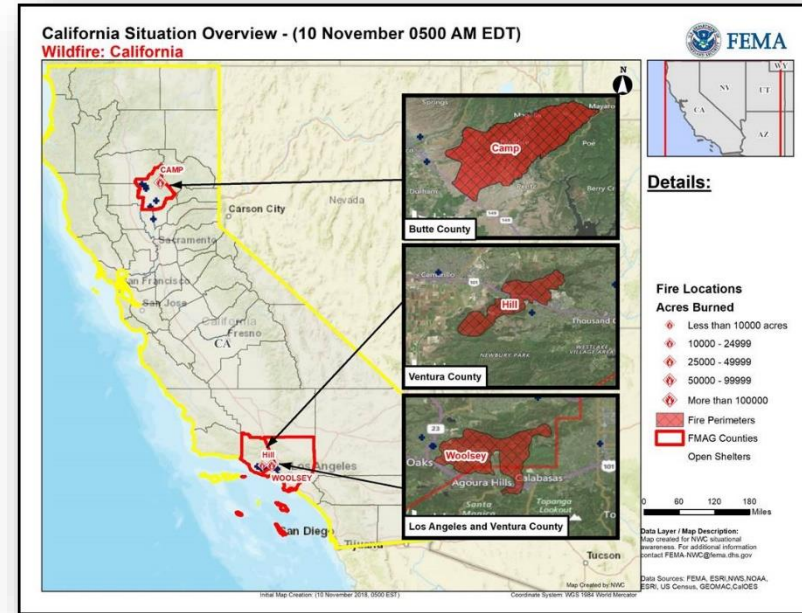
Multiple large wildfires are now burning throughout the state. Extremely critical fire weather conditions and Red Flag Warnings remain in effect. Strong winds and very dry humidity could lead to further wildfire growth. Sheltering is becoming the top lifeline priority.

Impacts

- 3 Injuries (responders) / 9 confirmed fatalities (Paradise, CA)
- 17 (+9) Shelters / 1,591 (+674) occupants
- Multiple state routes are closed; railroads threatened
- Feather River Hospital (city of Paradise) sustained significant damage and has been evacuated
- All Butte schools have been closed
- Communication lines, towers, CalFire communication sites, and CHP communications sites threatened
- 48.5k customers without power statewide (*DOE EAGLE I*)

Response

- CA EOC at Full Activation; Governor declared State of Emergency
- FEMA Region IX at Steady State but continues to monitor
 - LNOs deployed to CA EOC
- National IMAT West deployed to CA EOC ([Sacramento](#))
- FEMA ISB team deployed to [Chico, CA](#)
- FMAGs approved for all three fires
- [Emergency Disaster Declaration approved](#)



Wildfire Summary



FEMA

Fire Name (County)	FMAG Number	Acres Burned	Percent Contained	Evacuations (Residents)	Structures			Fatalities / Injuries
					Threatened	Damaged	Destroyed	
California (3)								
Camp (Butte)	5278-FM-CA Nov 8, 2018	90,000 (+2k)	5%	Mandatory (52k people)	17k homes	0	6,453	9 / 3
Hill (Ventura)	5279-FM-CA Nov 8, 2018	4,531 (-5,469)	15% (+15)	Mandatory (1.2k)	437 homes	0	0	0 / 0
Woolsey (Ventura / Los Angeles)	5280-FM-CA Nov 9, 2018	35,000 (+26k)	0%	Mandatory (40k)	3,500 homes	0	0	0 / 0

Tropical Cyclone Yutu Recovery – CNMI



FEMA

Total Individual Assistance Registrations to date: 6,229 (Sitrep #12 4396/4404 DR, Nov 9)

Safety and Security: Stabilized

Food, Water, Sheltering:

- Shelters / Occupants: 6 (-2) / 689 (+5) across CNMI
- Saipan: 1 congregate shelter in San Roque; 3 existing shelters transitioning to a congregate shelter in Tanapag
- Saipan: 47 tents installed; Tinian: 37 tents installed
- Saipan: 74 (+15) of 130 water wells or 64% (+8) water capacity restored
- Commercial vendors: 11 of 18 (61%) water companies are open; 14 of 31 (45%) grocery stores are open

Health and Medical:

- Saipan: 97 bed expansion plan completed at the Commonwealth Health Care Center (CHCC); second clinic established in Dandan Village
- Tinian: Tinian Health Clinic Emergency Room operational but on generator power

Energy:

- Saipan: 6 of 9 power feeders are non-mission capable; downtown commercial district at 90% CUC power – [Kiya substation is running](#)
- Tinian: all 4 power feeders are non-mission capable
- Saipan: 56 generators installed; Tinian: 11 generators installed; [DOE SME on the ground for assessments](#)
- Saipan: 12 of 19 fuel pumping stations operational; Tinian: 1 of 2 operational

Communication:

- Saipan: cell service 73%; 44 (+3) of 60 cell towers operational
- Tinian: cell service 50%; 3 of 6 cell towers operational; 911 service operational

Saipan



Tinian



Rota



Transportation:

- Saipan: airport grid power estimated to be restored by Nov 17; road debris clearance at 80% of major highways
- Tinian: all transportation infrastructure functional; runway lights and fuel station dispenser need to be repaired (night operations)

Hazardous Waste: Stabilized

State/Local Response:

- CNMI EOC at Full Activation; Governor declared a State of Emergency
- Guam National Guard supporting

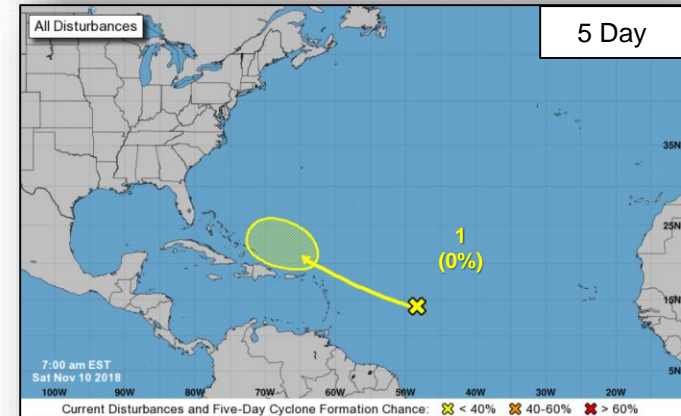
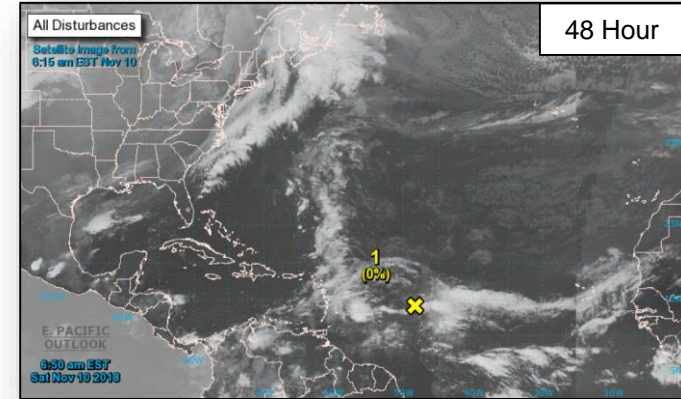
FEMA HQ/Federal Response:

- FEMA NWC at Steady State and monitoring
- FEMA Region IX RWC at Steady State and monitoring; LNOs deployed to CNMI and Guam
- FEMA Region VII and Region IX-2 IMATs deployed to CNMI
- FEMA ISB team and MERS assets deployed
- HHS medical teams and assets deployed
- USACE 249th Prime Power, Planning and Response Team (PRT), and contractor assets deployed

Tropical Outlook – Atlantic

Disturbance 1 (as of 7:00 a.m. EST)

- Several hundred miles east of the Lesser Antilles
- Some development is possible around the middle of next week
- Formation chance through 48 hours: Low (near 0%)
- Formation chance through 5 days: Low (30%)



Tropical Outlook – Eastern Pacific

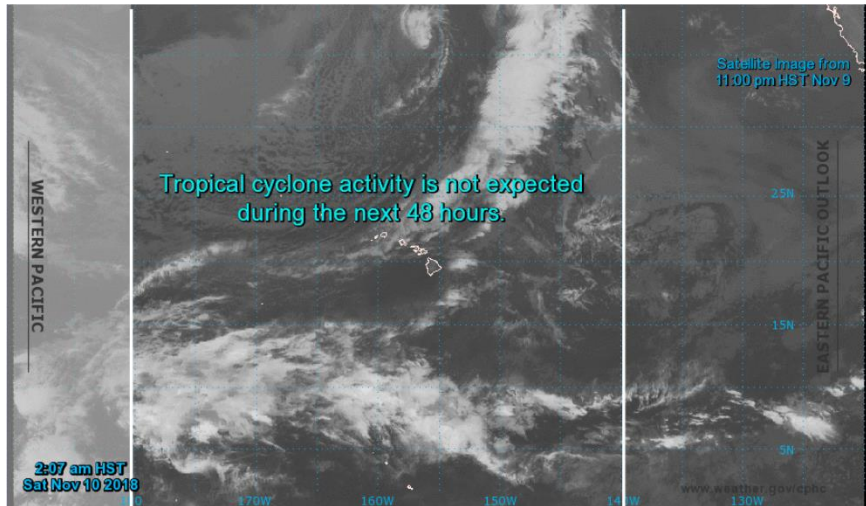


48 Hour Outlook

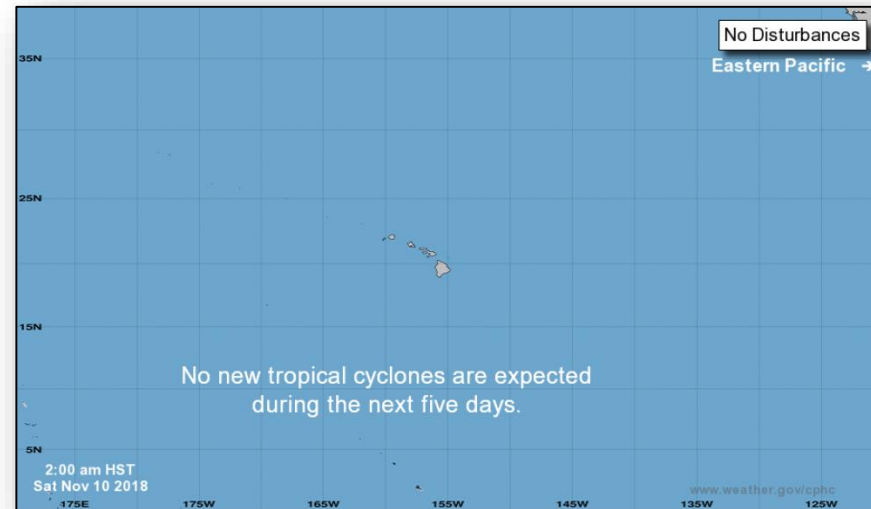


5 Day Outlook

Tropical Outlook – Central Pacific

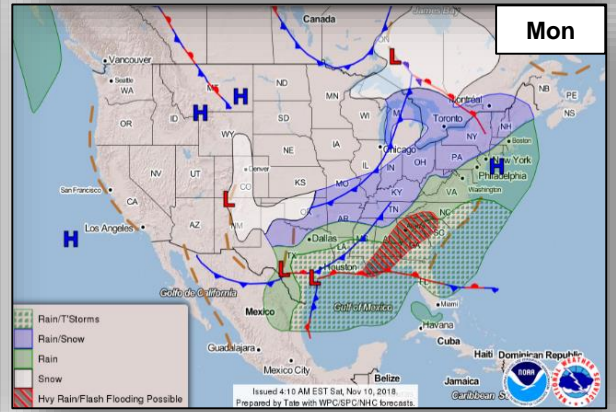
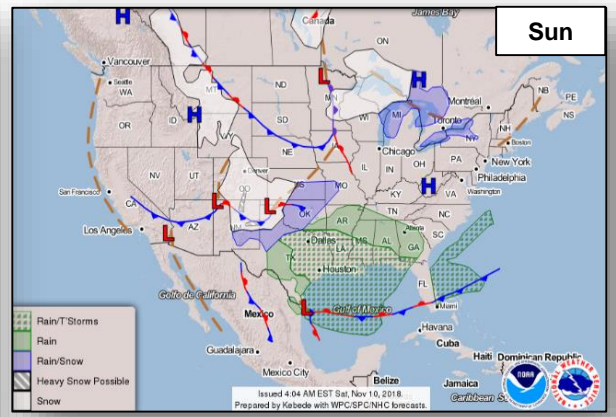
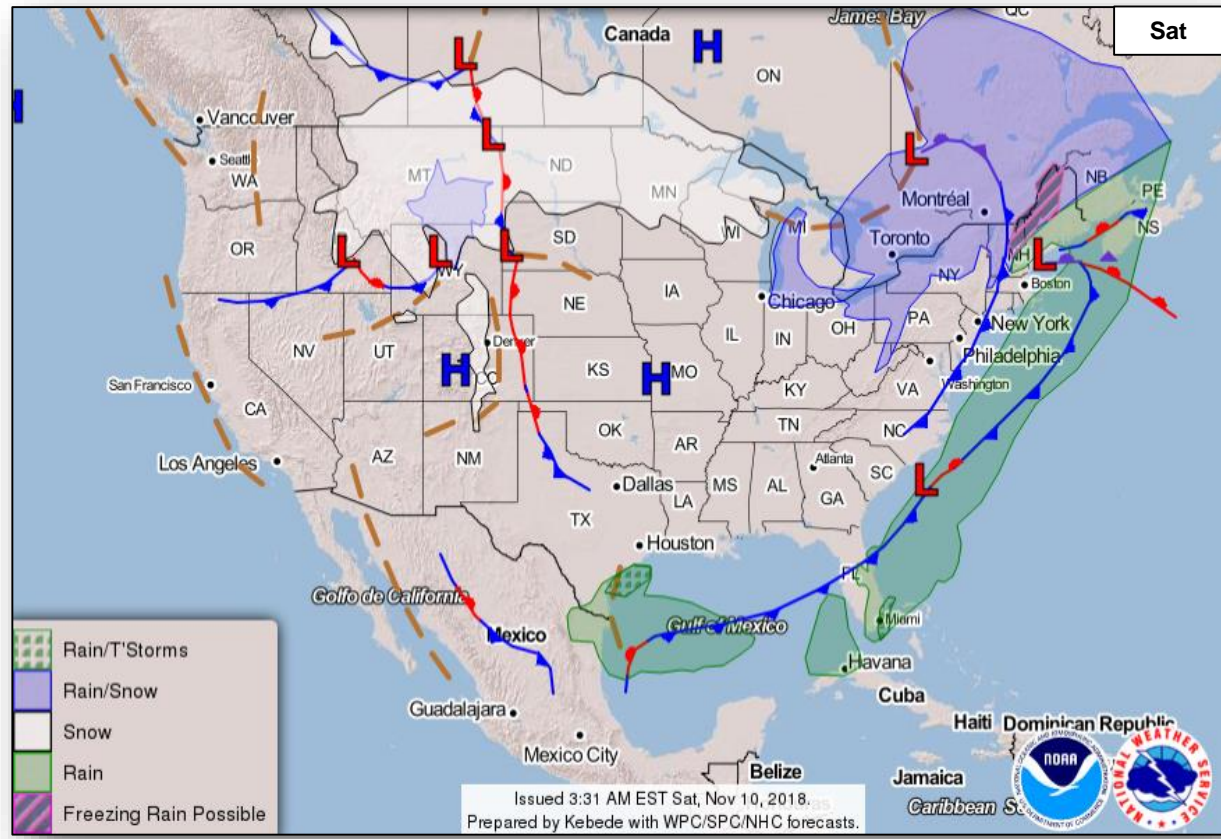


48 Hour Outlook



5 Day Outlook

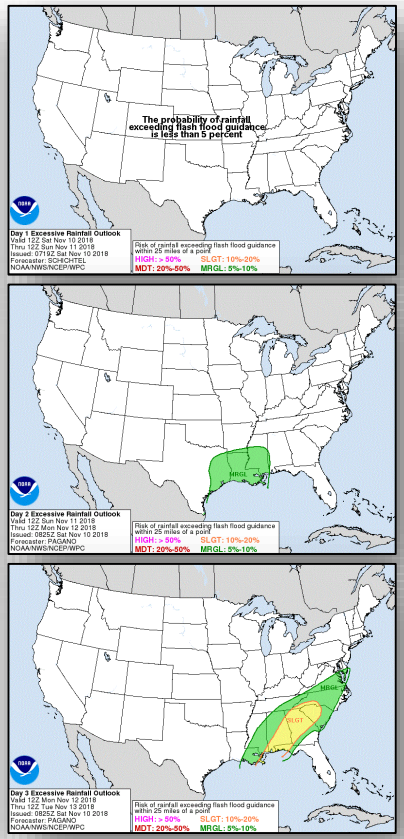
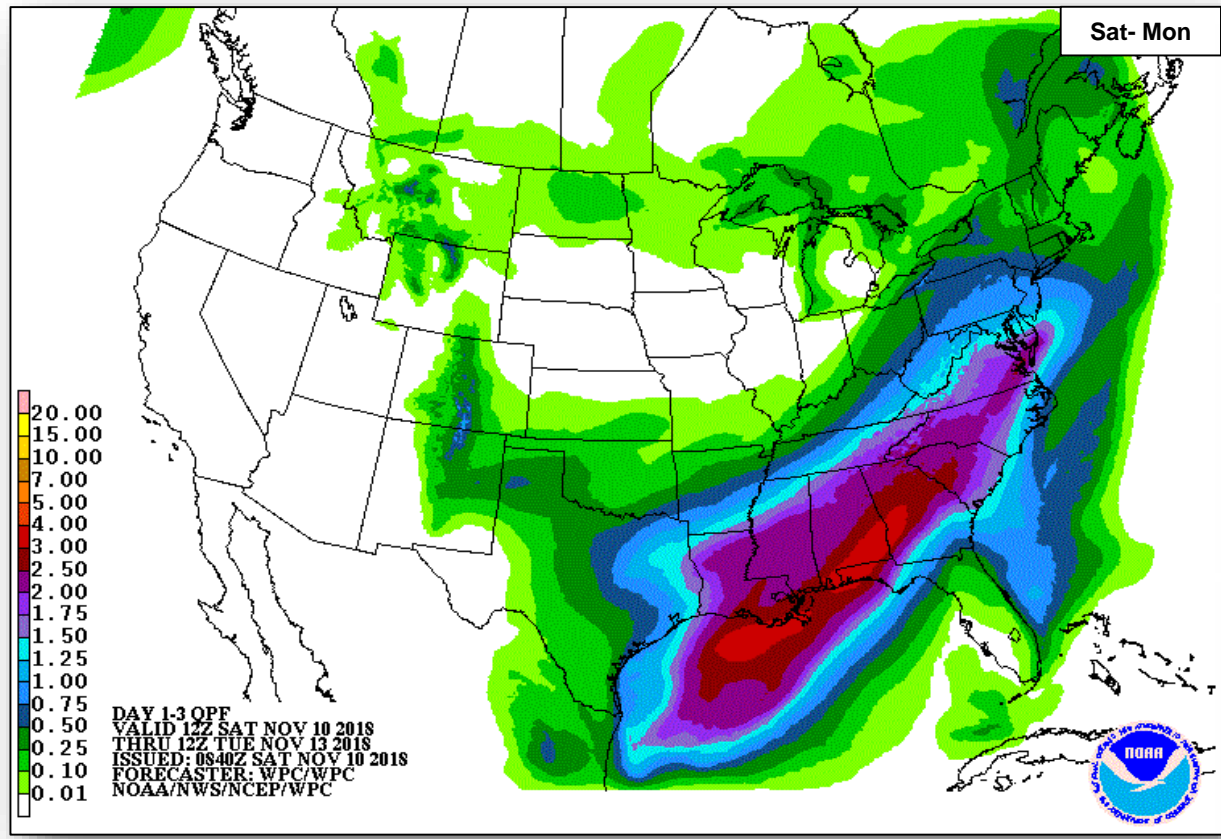
National Weather Forecast



Precipitation / Excessive Rainfall Forecast



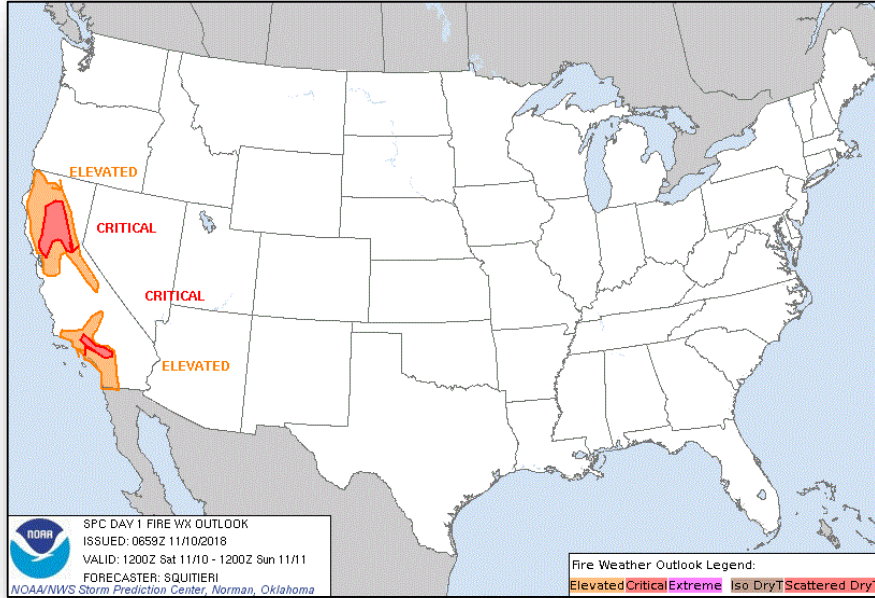
FEMA



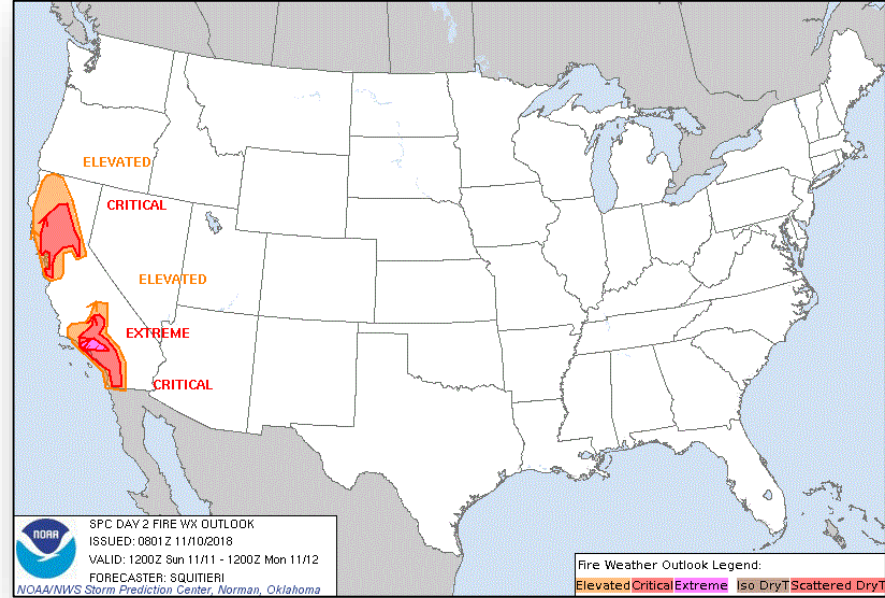
Fire Weather Outlook



FEMA



Saturday

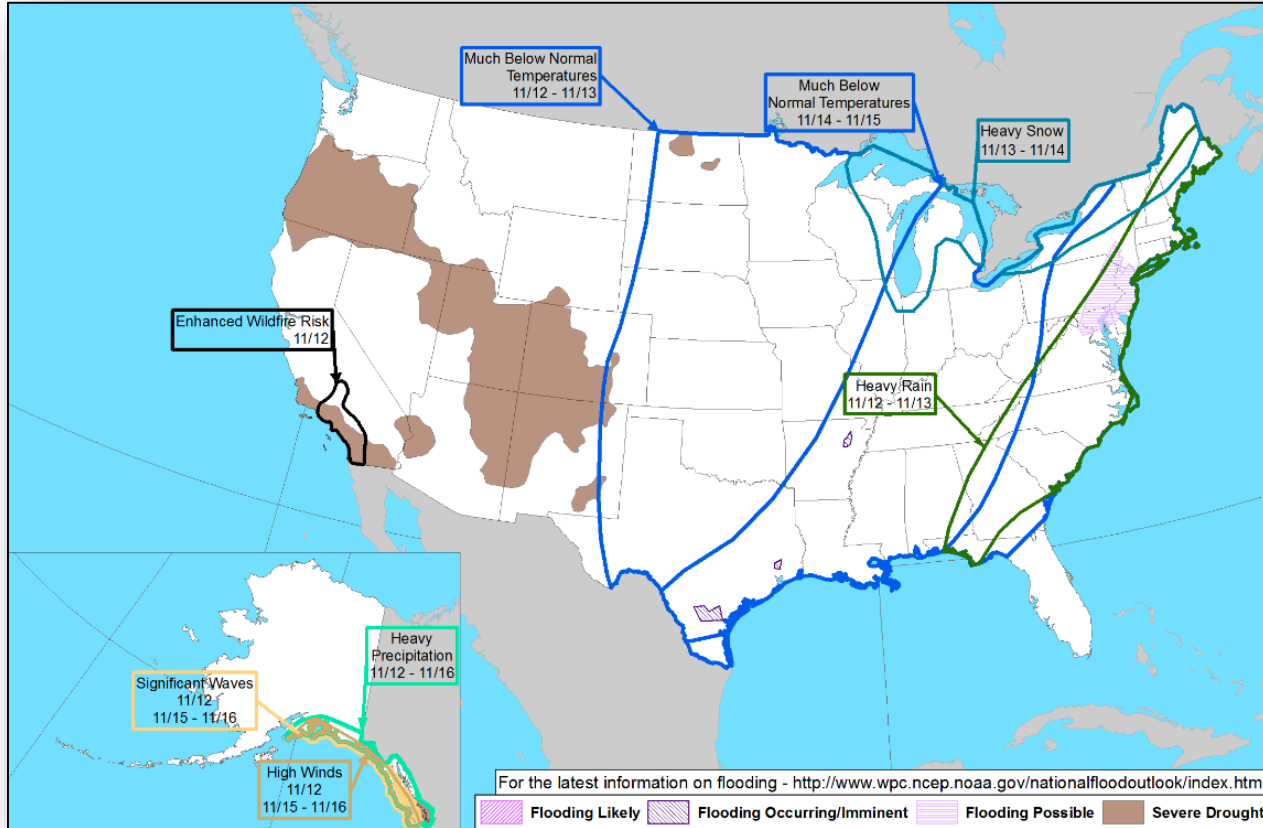


Sunday

Hazards Outlook – Nov 12-16



FEMA



Joint Preliminary Damage Assessments



FEMA

Region	State / Location	Event	IA / PA	Number of Counties		Start – End
				Requested	Completed	
III	VA	Hurricane Michael October 10-11, 2018	IA	0	0	N/A
			PA	38	21	10/29 – TBD
V	MN	Flooding October 10, 2018	IA	0	0	NA
			PA	1	0	10/29 – TBD
VII	KS	Severe Storms, High Winds, and Flooding October 4, 2018	IA	0	0	N/A
			PA	13	12 (+6)	10/29 – TBD

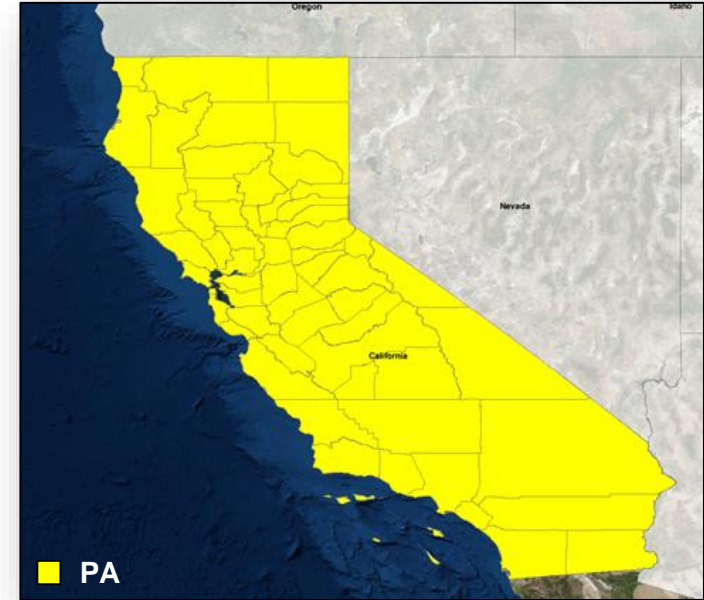
Declaration Approved



FEMA

FEMA-3409-EM-CA

- The President approved an Emergency Declaration on November 9, 2018 for the State of California
- For wildfires beginning on November 8, 2018, and continuing
- Provides:
 - Emergency protective measures (Cat B), limited to direct federal assistance under the Public Assistance program, for the entire State of California
- FCO is David G. Samaniego



Disaster Requests & Declarations



FEMA

Declaration Requests in Process					Requests APPROVED (since last report)	Requests DENIED (since last report)
4	IA	PA	HM	Date Requested	0	0
NC – DR (Appeal) Severe Storms, Flooding, Landslides, and Mudslides	X	X	X	September 19, 2018		
TX – DR Severe Storms and Flooding	X	X	X	October 30, 2018		
PA – DR Severe Storms and Flooding	X	X	X	November 2, 2018		
AZ – DR Remnants of Tropical Storm Rosa *	X	X	X	November 8, 2018		
CA – EM Wildfires		X		November 8, 2018	November 9	

* Tohono O’odham Nation

Readiness – Deployable Teams and Assets



Resource		Force Strength	Available	Deployed	Other	Cadres with 25% or Less Availability	
IM Workforce		12,152 ▼	2,028 ▼ 17%	6,663 ▼	3,461	DSA 8% (65/847); EA 21% (117/552); EHP 5% (20/418); ER 5% (2/44); FL 14% (23/169); FM 22% (57/264); HM 10% (105/1,013); HR 10% (25/242); IT 8% (53/636); LOG 11% (136/1,208); OPS 11% (29/264); PA 6% (113/1,865); PLAN 10% (34/341); SAF 0% (0/56); SEC 2% (2/116)	
National IMATs* (1-2 Teams)	East :	Available					
	Composite:	Available					
West:	Deployed						
Regional IMATs (≤ 3 Teams)	Assigned:	13					
	Available:	1					
	PMC / NMC:	3					
National ISBs (0 Teams)	Deployed:	9					
	Team A	Deployed					
	Team B	Deployed					
US&R (>66%)	Team C	Deployed					
	Assigned:	28					
	Available:	28					
	PMC / NMC:	0					
MERS (>66%)	Deployed:	0					
	Assigned:	36					
	Available:	29					
	PMC / NMC:	0					
FCO (≥3 Type I)	Deployed:	7					
	Assigned:	30					
	Available:	5					
	PMC / NMC:	0					
FDRC (≥3)	Deployed:	25					
	Assigned:	13					
	Available:	4					
	PMC / NMC:	1					
		Deployed:	8				

As of 3:00 a.m. EST Nov 10, 2018 Created by: FEMA NWC

* **B-2 Status:** Assemble ≤ 2-hrs, On Site ≤ 18-hrs; **B-48 Status:** Assemble and deploy ≤ 48hrs; **Charlie Status:** No team assemble time requirement

FEMA Readiness – Activation Teams



Status		Activated Team	Activation Level	Activation Times	Reason / Comments
NWC (5 Teams)	Steady State				
NRCC (2 Teams)	Steady State				
HLT	Activated				
RWC / MOCs (10 Regions)	Steady State				
RRCCs (10 Regions)	Steady State				

Backup Regions: **VI, X, and VIII**



FEMA

FEMA's mission is helping people before, during, and after disasters.

Click [here](#) to subscribe to this briefing.