

The Disaster Center is dedicated to the idea that disaster mitigation is cost effective and individuals pursuing their own interest are the greatest potential force for disaster reduction.

Please consider making a small donation to the Disaster Center



When disaster mitigation is cost effective, we are on the road to bringing disasters to an end.



FEMA

Daily Operations Briefing

Tuesday, November 13, 2018

8:30 a.m. EST

Significant Activity – Nov 9-13



FEMA

Significant Events:

- CA Wildfires
- Tropical Cyclone Yutu Recovery

Tropical Activity:

- Atlantic – Disturbance 1: Low (30%)
- Eastern Pacific – No new tropical cyclones are expected during the next 5 days
- Central Pacific – No new tropical cyclones are expected during the next 5 days
- Western Pacific – No activity affecting U.S. interests

Significant Weather:

- Extreme and Critical fire weather – southern CA
- Red Flag Warnings – CA
- Heavy Snow possible – Pacific Northwest, Great Lakes, and Northeast

Declaration Activity:

- Major Disaster Declaration approved – California

Wildfires – California



Current Situation:

The Camp Fire (*Butte County*) and the Woolsey Fire (*Los Angeles & Ventura counties*) continue to burn in CA. Santa Ana Winds are exacerbating the incident.

Safety and Security:

- Evacuations: Camp - 53k people ; Woolsey - 84k people
- Fatalities / Injuries: Total 44 / 6; Camp: 42 / 3; Woolsey: 2 / 3

Food, Water, and Sheltering:

- 12 shelters open / 1,012 occupants (*ARC Midnight Shelter count as of 6:00 a.m. EST, Nov 13*)
- Homes Destroyed: Camp: 6.5k; Woolsey: 429
- State of CA working to acquire generators for the affected water system
- Camp Fire:
 - Boil water advisory issued for surrounding communities until further notice
 - Del Oro Water Company in Magalia evacuated

Health/Medical:

- Camp: Hospital evacuated; Woolsey: Six facilities evacuated, four shelter-in-place

Energy (Power & Fuel):

- State and Federal responders working to gain Energy Lifeline situational awareness
- 42k without power statewide* (*DOE EAGLE-I as of 4:25 am EST*)

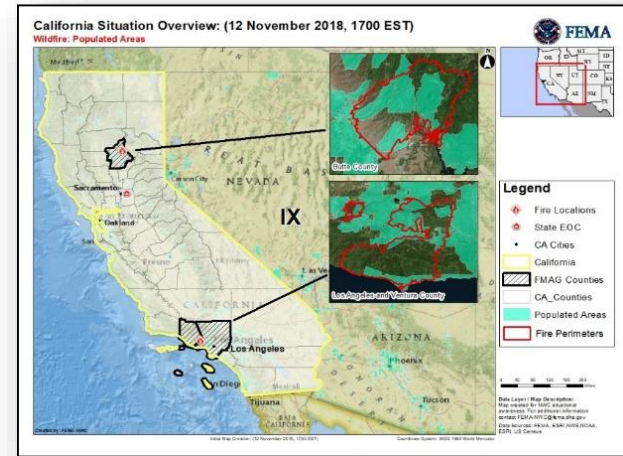
Communications:

- Communication lines, towers, CalFire communication sites, CHP communications sites, federal and naval satellite communication infrastructure threatened
- Woolsey: 20% cell sites offline (*Ventura*) and <1% offline (*LA County*) Camp: Unknown

Camp Fire:



Woolsey Fire:



Transportation:

- Portions of U.S. 101 and multiple state roads closed
- Portions of Union Pacific rail lines closed

*Note: Customer outage data is provided by the Department of Energy's EAGLE-I system. Comprehensive National coverage of all electrical service providers is not available.

Wildfires – California



State/Local Response:

- Governor declared a State of Emergency for Butte, Ventura and Los Angeles counties
- National Guard and EMAC activated
- CA EOC at Full activation

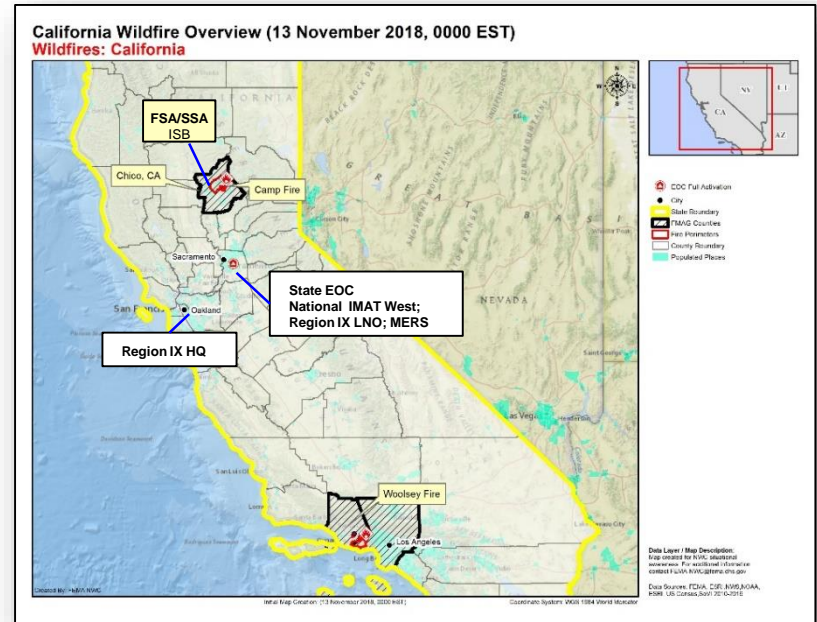
FEMA Response:

- FEMA-4407-DR-CA approved on November 12
- FMAG-5278-FM-CA approved November 8 for Camp Fire
- FEMA-5280-FM-CA approved November 9 for Woolsey Fire
- Region IX RWC at Steady State, continues to monitor
- Region IX LNO deployed to CA EOC
- National IMAT West deployed to CA EOC
- HQ ISB team deployed to Chico, CA
- MERS assets deployed to southern CA

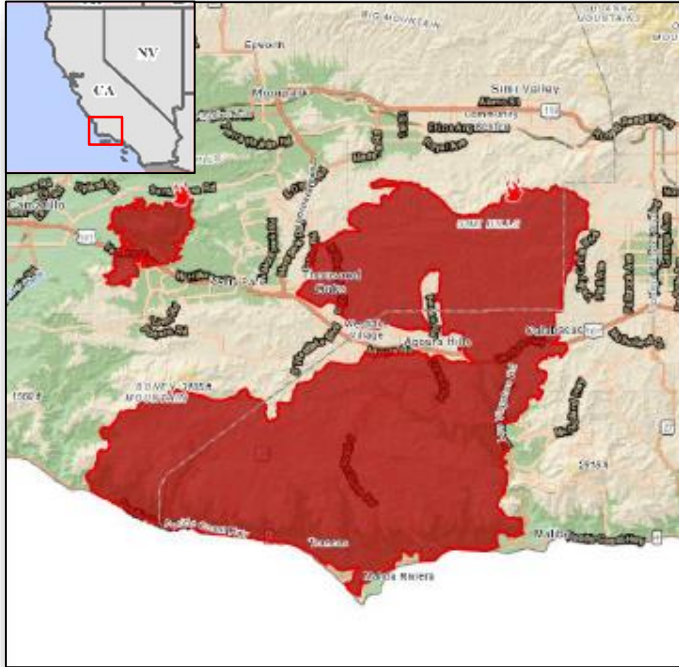
Camp Fire:



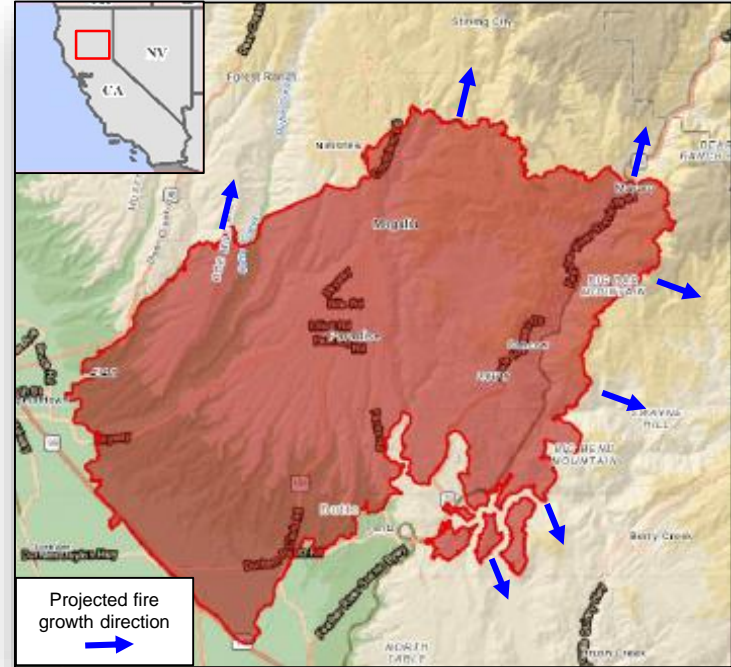
Woolsey Fire:



Wildfires – Projected Fire Growth



Woolsey Fire Perimeter



Camp Fire Perimeter

Wildfire Summary



FEMA

Fire Name (County)	FMAG Number	Acres Burned	Percent Contained	Evacuations (Residents)	Structures			Fatalities / Injuries
					Threatened	Damaged	Destroyed	
California (2)								
Camp (Butte)	5278-FM-CA Nov 8, 2018	117k (+6k)	30% (+5)	Mandatory (53k people)	18k (15k homes)	92 (47 homes)	7,177 (6,582 homes)	42 (+13) / 3
Woolsey (Ventura / Los Angeles)	5280-FM-CA Nov 9, 2018	94k (+8k)	30% (+15)	Mandatory (182k people)	57k (51.5k homes)	24 (2 homes)	436 (429 homes)	2 / 3

Tropical Cyclone Yutu Recovery – CNMI



FEMA

Total IA Registrations: 6,988 (+211) (Open Disaster IA Update 4404-DR, as of Nov 12)

Food, Water, Sheltering:

- **Shelters / Occupants: 6 / 695 (+10) in Saipan**
- Saipan: Bottle water company now on generator power
- Tents installed to date: **Saipan – 219 (+46)**; Tinian - 203
- Prioritizing generator placement at existing schools and long term shelters – two are currently powered by FEMA generators
- ARC prepared meals contract ends Nov 24; CNMI developing a six week pantry box project to allow survivors to prepare their own meals; start date is Nov 16

Health and Medical:

- Saipan: Hospital remains operational; San Antonio and Dandan clinics open
- Tinian: Tinian Health Clinic Emergency Room operational but on generator power

Energy:

- Saipan: 6 of 9 power feeders NMC; Tinian: 4 of 4 power feeders NMC
- **Saipan: 84 (+4) generators installed; Tinian: 14 (+3) generators installed**
- Saipan: 12 of 19 fuel pumping stations operational; Tinian: 1 of 2 operational
- Saipan Airport terminal back-up generator failed; repair/reinstall assessment scheduled; airport running on second back-up generator

Communication:

- Saipan: Cell service 73%; 44 of 60 cell towers operational
- Tinian: Cell service 50%; 3 of 6 cell towers operational



Transportation:

- Saipan: Airport grid power estimated to be restored by Nov 17
- Tinian: Airport night ops require runway lights and fuel station repair

State / Local Response:

- CNMI EOC at Full Activation; Governor declared a State of Emergency
- Guam National Guard supporting

FEMA / Federal Response:

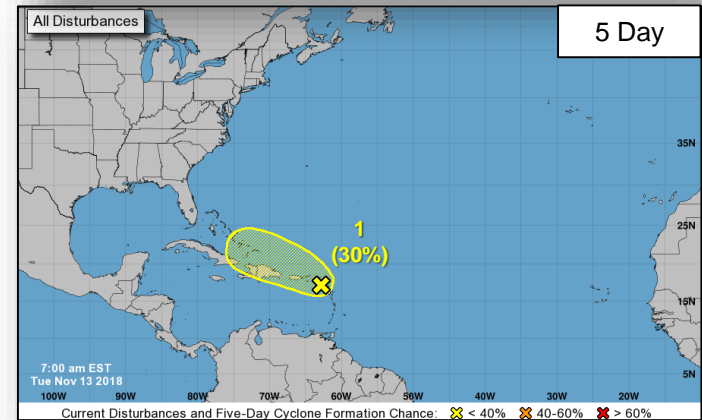
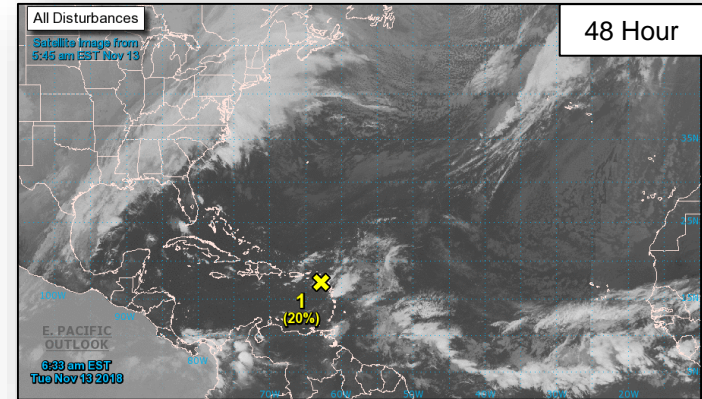
- FEMA NWC at Steady State and monitoring
- FEMA Region IX RWC at Steady State and monitoring; LNOs deployed to CNMI and Guam
- FEMA Region VII and Region IX-2 IMATs deployed to CNMI
- FEMA ISB team and MERS assets deployed; a second Movement Control Unit (MCU) deployed to CNMI
- HHS medical teams and assets deployed
- USACE 249th Prime Power, Planning and Response Team (PRT), and contractor assets deployed

Tropical Outlook – Atlantic



Disturbance 1 (Invest 96L) (as of 7:00 a.m. EST)

- E of Leeward Islands
- Forecast to move W for the next few days passing near or north of the Leeward Islands
- Expected to bring locally heavy rainfall to portions of the Leeward Islands, the Virgin Islands, and Puerto Rico over the next few days
- Formation chance through 48 hours: Low (20%)
- Formation chance through 5 days: Low (30%)



Tropical Outlook – Eastern Pacific



48 Hour Outlook

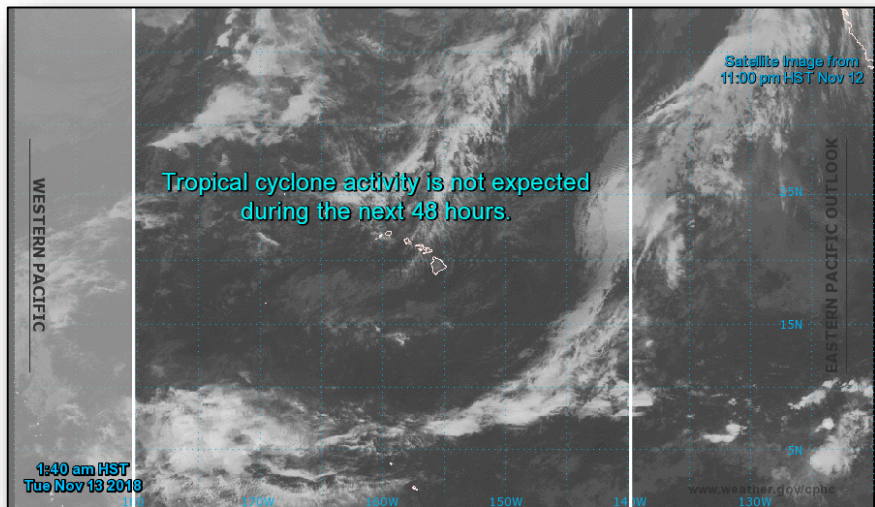


5 Day Outlook

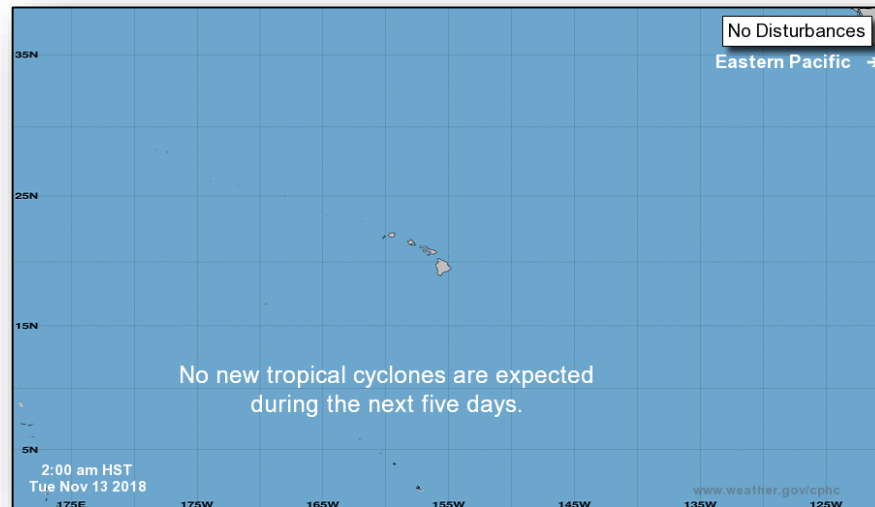
Tropical Outlook – Central Pacific



FEMA

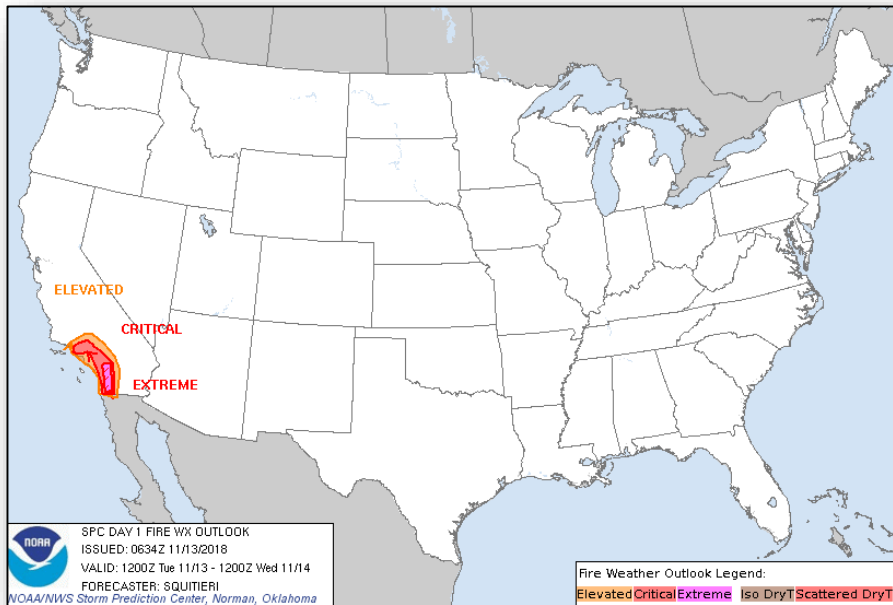


48 Hour Outlook

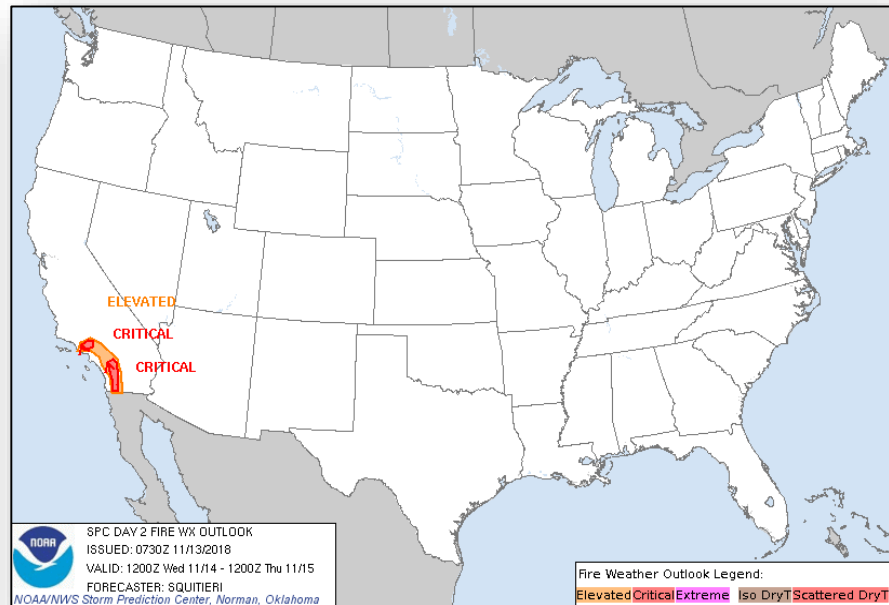


5 Day Outlook

Fire Weather Outlook



Tuesday

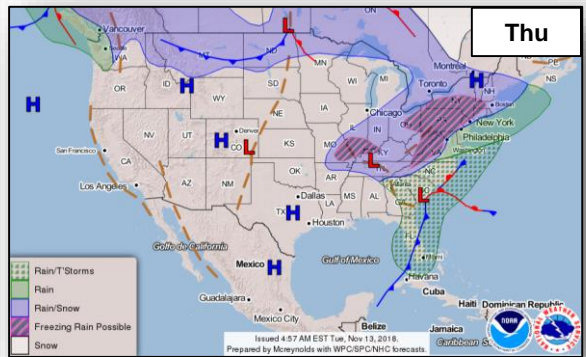
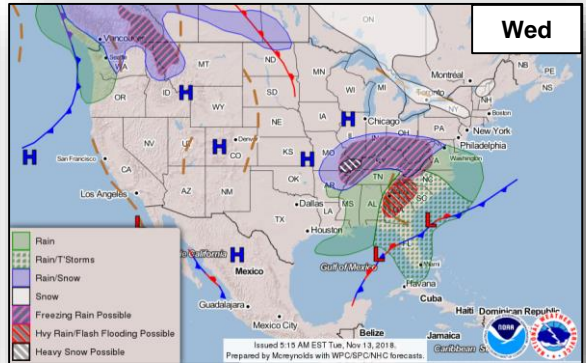
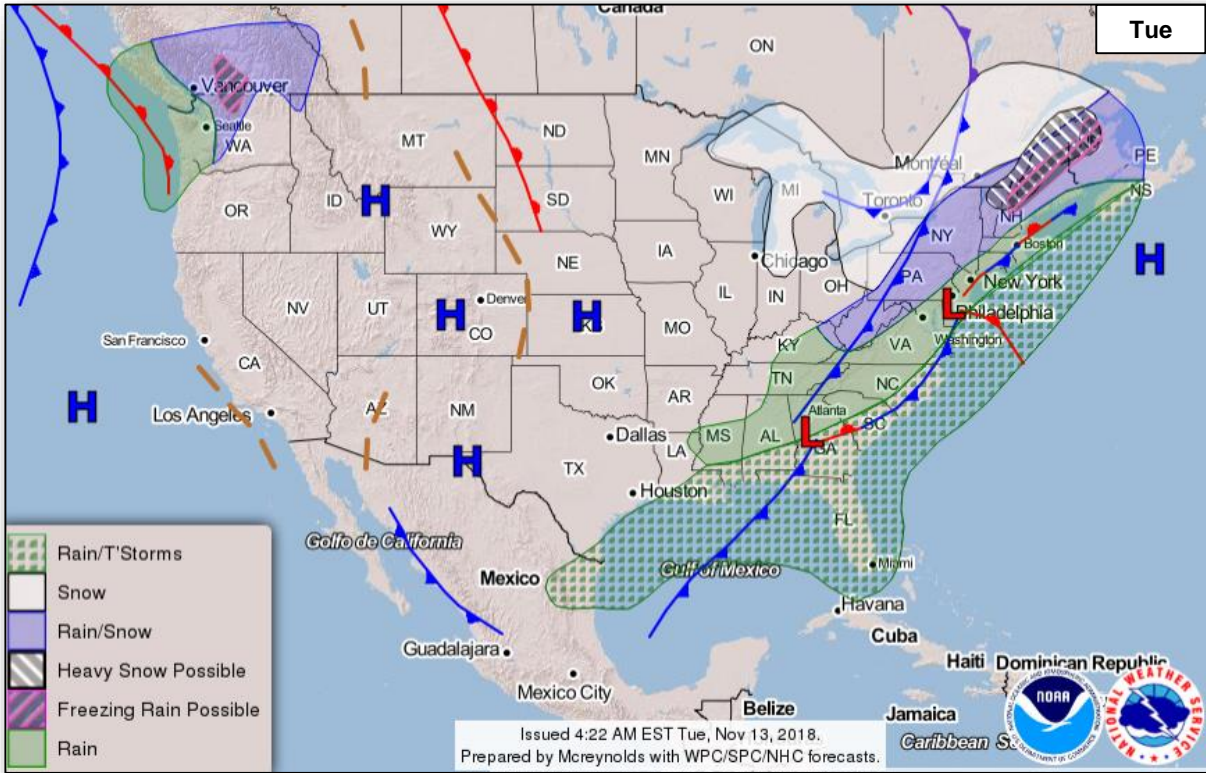


Wednesday

National Weather Forecast



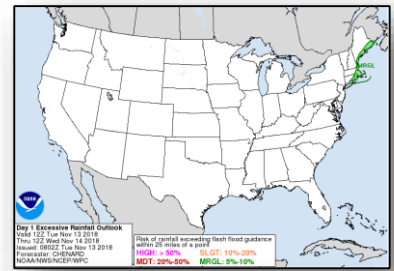
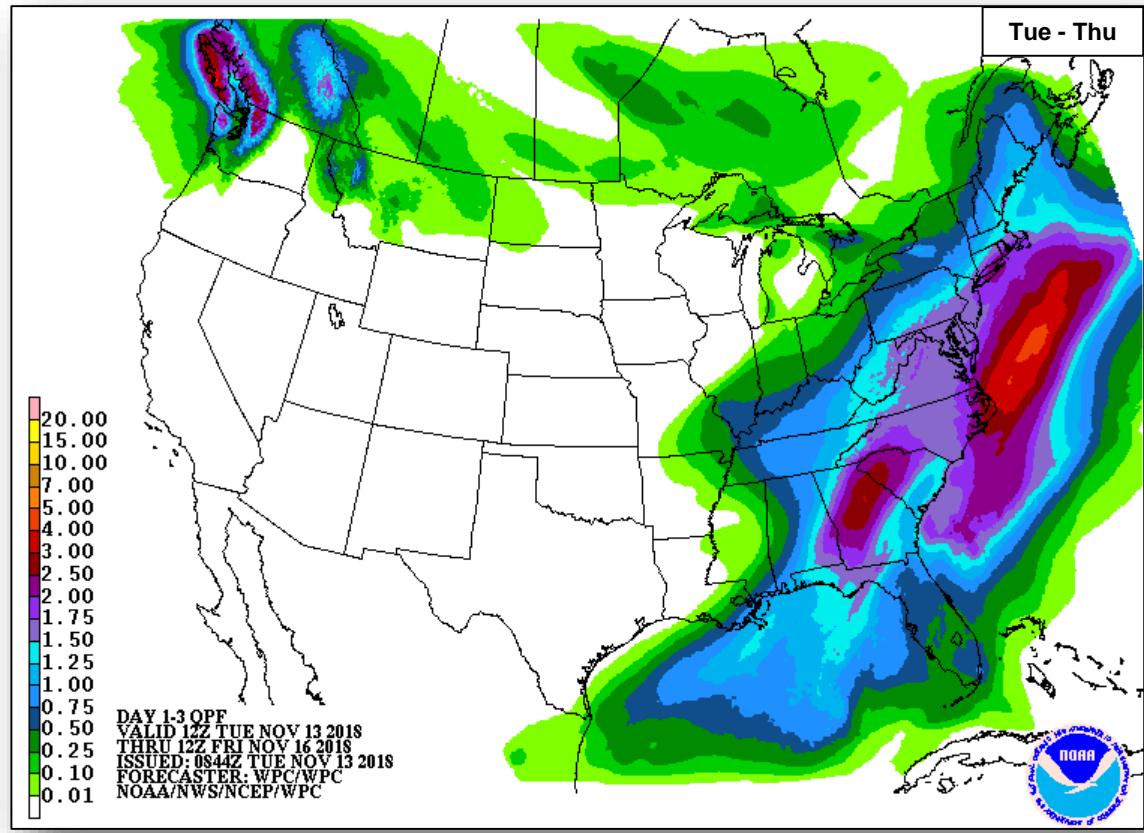
FEMA



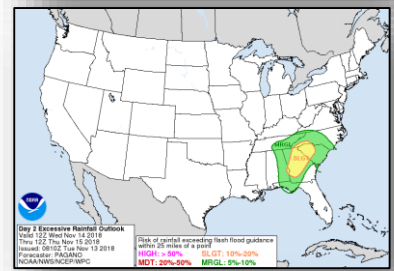
Precipitation / Excessive Rainfall Forecast



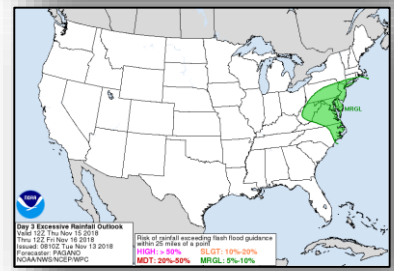
FEMA



Tue



Wed

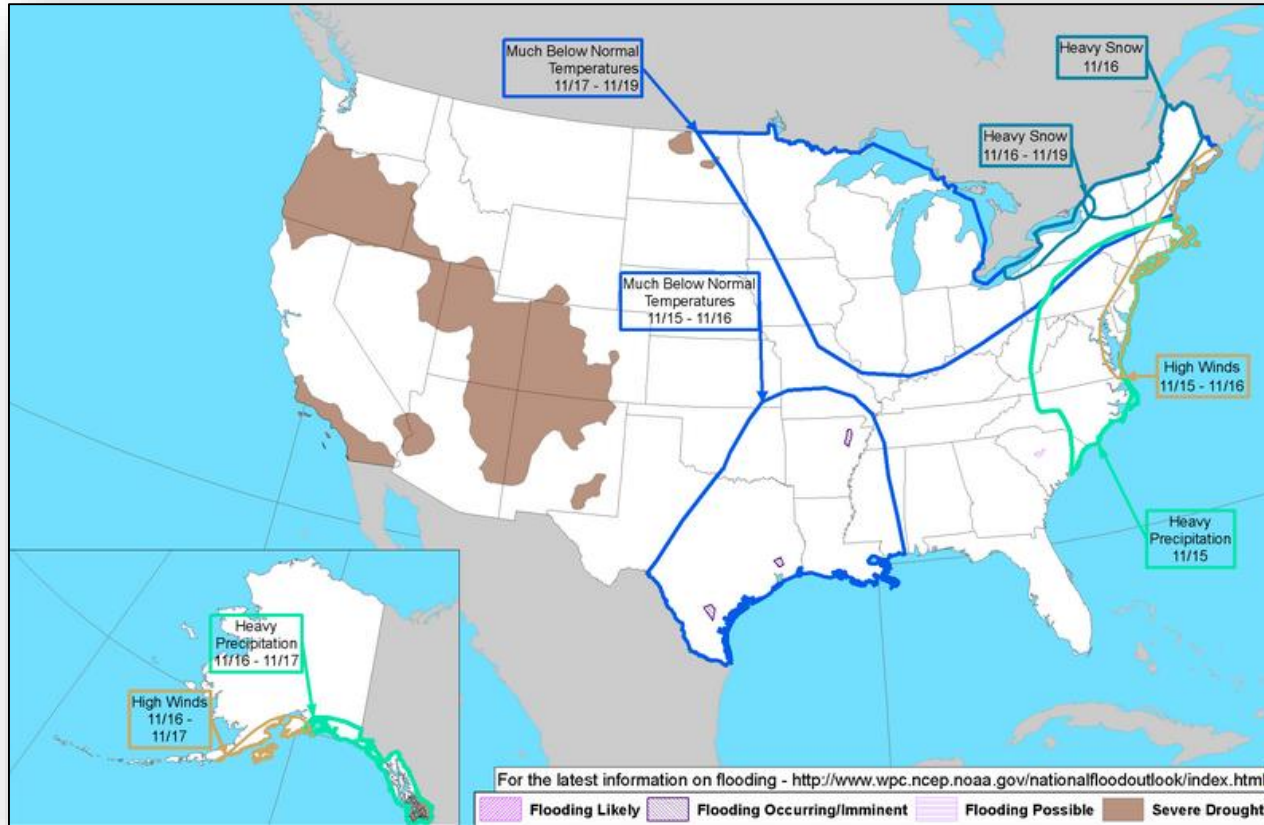


Thu

Hazards Outlook – Nov 15-19



FEMA



Joint Preliminary Damage Assessments



FEMA

Region	State / Location	Event	IA / PA	Number of Counties		Start – End
				Requested	Completed	
I	CT	Severe Storms and Flooding September 25, 2018	IA	0	0	N/A
			PA	2	0	11/05 – TBD
III	VA	Hurricane Michael October 10-11, 2018	IA	0	0	N/A
			PA	38	23	10/29 – TBD

Declaration Approved



FEMA-4407-DR-CA

- The President approved a Major Disaster Declaration on November 12, 2018
- For wildfires from November 8, 2018 and continuing
- Provides:
 - Individual and Public assistance for debris removal and emergency protective measures (Categories A/B) , including direct Federal Assistance, for 3 counties
 - Hazard Mitigation statewide
- FCO is David G. Samaniego



Disaster Requests & Declarations



FEMA

Declaration Requests in Process					Requests APPROVED (since last report)	Requests DENIED (since last report)
3	IA	PA	HM	Date Requested	1	0
TX – DR Severe Storms and Flooding	X	X	X	October 30, 2018		
PA – DR Severe Storms and Flooding	X	X	X	November 2, 2018		
AZ – DR Remnants of Tropical Storm Rosa*	X	X	X	November 8, 2018		
CA – DR Wildfires	X	X	X	November 11, 2018	Declared November 12, 2018	

*Tohono O'odham Nation

Readiness – Deployable Teams and Assets



FEMA

Resource	Force Strength	Available	Deployed	Other	Cadres with 25% or Less Availability
IM Workforce	12,365 ▲	1,999 ▼ 16%	6,843 ▼	3,523	DSA 3% (22/852); EA 22% (119/554); EHP 5% (21/422); ER 7% (3/44); FL 12% (19/157); FM 21% (57/272); HM 11% (115/1,026); HR 11% (27/247); IA 25% (735/2,900); IT 11% (71/640); LOG 7% (88/1,226); OPS 14% (34/265); PA 6% (116/1,865); PLAN 9% (31/342); SAF 2% (1/56); SEC 3% (4/116)
National IMATs* (1-2 Teams)	East : Composite: West:	Available Available Deployed			
Regional IMATs (≤ 3 Teams)	Assigned: Available: PMC / NMC: Deployed:	13 1 3 9			
National ISBs (0 Teams)	Team A Team B Team C	Deployed Deployed Deployed			
US&R (>66%)	Assigned: Available: PMC / NMC: Deployed:	28 23 (-5) 5 (+5) 0			
MERS (>66%)	Assigned: Available: PMC / NMC: Deployed:	36 29 0 7			
FCO (≥3 Type I)	Assigned: Available: PMC / NMC: Deployed:	30 5 0 25			
FDRC (≥3)	Assigned: Available: PMC / NMC: Deployed:	13 4 1 8			

As of 3:00 a.m. EST Nov 13, 2018 Created by: FEMA NWC

* **B-2 Status:** Assemble ≤ 2-hrs, On Site ≤ 18-hrs; **B-48 Status:** Assemble and deploy ≤ 48hrs; **Charlie Status:** No team assemble time requirement

FEMA Readiness – Activation Teams



Status		Activated Team	Activation Level	Activation Times	Reason / Comments
NWC (5 Teams)	Steady State				
NRCC (2 Teams)	Steady State				
HLT	Activated				
RWC / MOCs (10 Regions)	Activated	Region II	Enhanced Watch	7:00 a.m. – 7:00 p.m. EST	Invest 96L
RRCCs (10 Regions)	Steady State				

Backup Regions: **VI, X, and VIII**



FEMA

FEMA's mission is helping people before, during, and after disasters.

Click [here](#) to subscribe to this briefing.