

The Disaster Center is dedicated to the idea that disaster mitigation is cost effective and individuals pursuing their own interest are the greatest potential force for disaster reduction.

Please consider making a small donation to the Disaster Center



When disaster mitigation is cost effective, we are on the road to bringing disasters to an end.



FEMA

Daily Operations Briefing

Saturday, March 23, 2019

8:30 a.m. EDT

Significant Activity – Mar 22-23



FEMA

Significant Events: Flooding – Central U.S.

Tropical Activity: No activity affecting U.S. interests

Significant Weather: None

Declaration Activity:

- Major Disaster Declaration request - Mississippi

Flooding – Central U.S.



FEMA

Current Situation

Flooding concerns continue for the Missouri River basin. Portions of the Upper Mississippi River and Missouri River will continue to crest in some areas and recede in others.

Lifeline Impacts

Safety and Security:

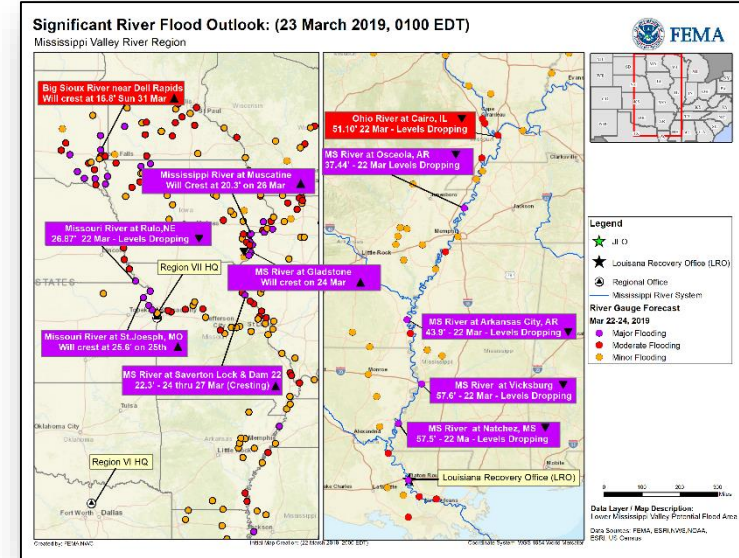
- Many federal levees have overtopped or breached along 200 miles of river from Omaha, NE to Leavenworth, KS; mostly agricultural land
- 8 levees have overtopped or breached; 3 levees were forecast to overtop, 8 levees are projected to have less than 2 feet of freeboard; mostly agricultural land with minimal impacts to homes and businesses except for MRLS 471-460 which could affect the cities of Elwood and Wathena, Highway 36, and Rosecrans airport north of Elwood, KS (*USACE NWD; Region VII Incident Report*)

Food, Water, and Sheltering:

- IA: Mandatory and voluntary evacuations continue for portions of Fremont, Iowa, Mills, Pottawattamie, Sioux, and Woodbury counties (combined pop. 268k, but number of evacuated residents is unknown)
- Portions of St. Joseph, MO, Elwood, KS, and Wathena, KS along the Missouri River under voluntary evacuations (combined pop. 79k)
- Shelters:
 - KS: 1 open with 20 occupants
 - NE: 8 open with 268 (-49) occupants
 - IA: 4 open with 41 (-1) occupants
 - MO: 2 open with 18 (+6) occupants (*Region VII SLB*)

Communications:

- NE: U.S. Cellular tower in Dannebrog site is down; 4 AT&T cell towers are offline by the Missouri River; all 911 call centers are operational



Flooding – Central U.S.



FEMA

Transportation:

- Multiple roads and bridges are closed; detours in place
- US-50 closed at KS/MO state line, alternate routes available
- NE: 81 highways affected, 15 bridges significantly damaged; **total of 2,041 miles impacted, over 1,500 miles re-opened, 381 miles of state highways still closed**

State / Local Response

- NE and IA EOCs at Full Activation
- **MO**, KS, SD and IL EOCs at Partial Activation
- **MS and TN EOCs at Monitoring**
- States of Emergency (or equivalent) declared:
 - OH, WI, KS, NE, IA and MO
 - Tribal Nations in NE: Omaha Tribe, Ponca Tribe, Winnebago Tribe, Santee Sioux, and the Sac and Fox of the Missouri; Tribal Nation in IA: Sac and Fox of the Mississippi
- NE National Guard assisting with traffic control and security
- Major Disaster Declaration requested for IA

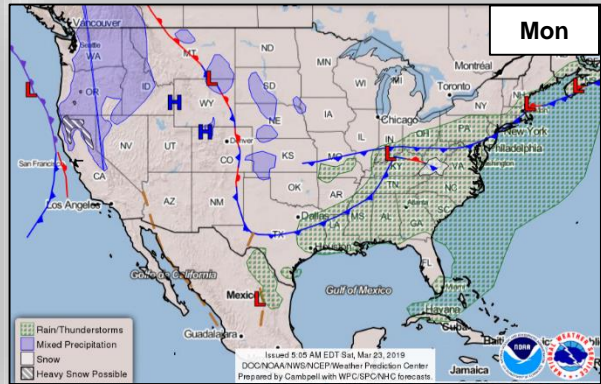
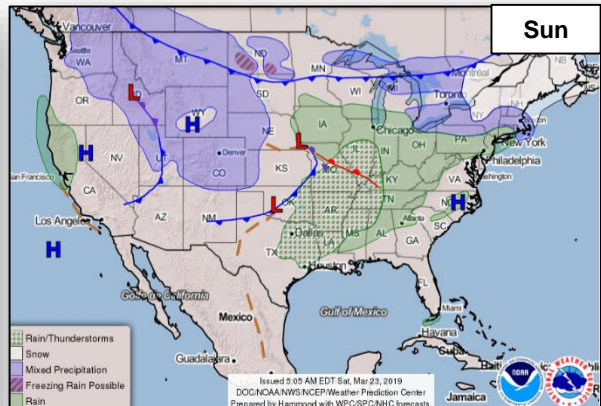
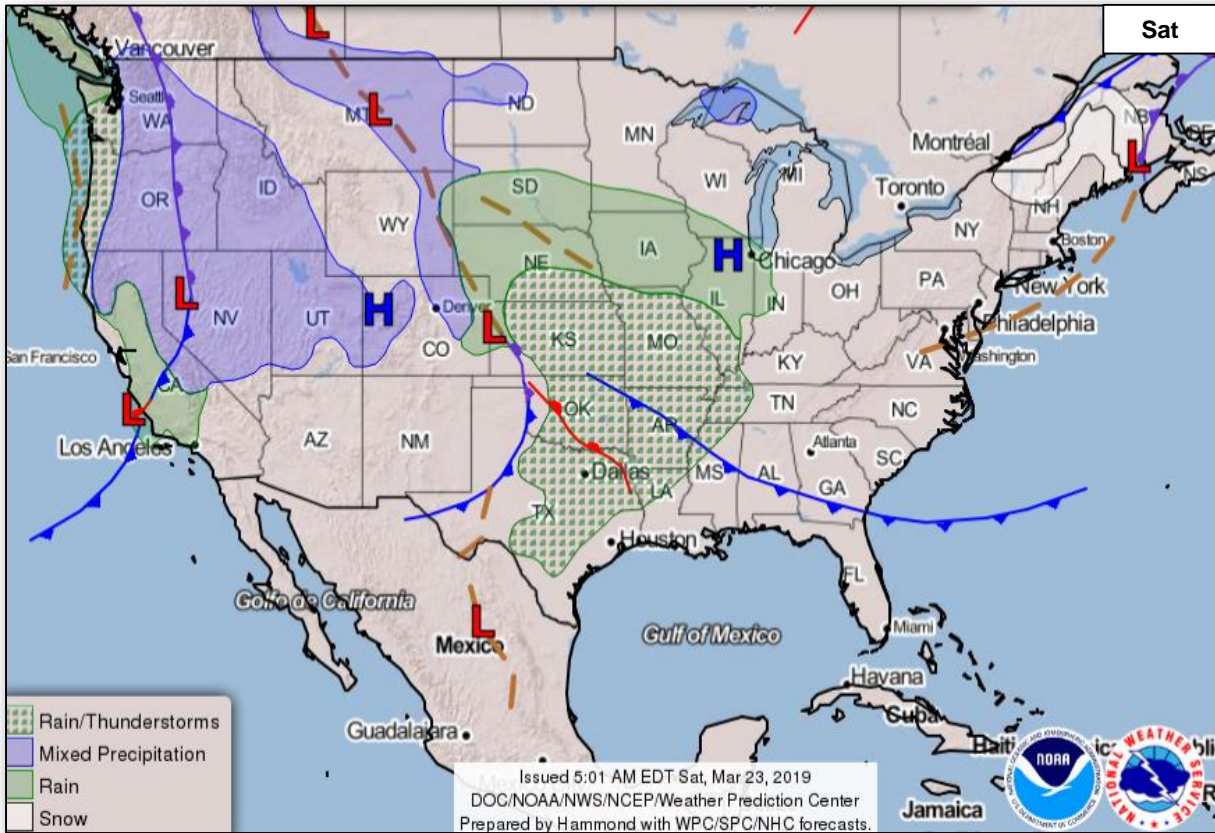
FEMA / Federal Response

- FEMA Region VII
 - RRCC at Level III (day shift only)
 - IMAT deployed to NE (assisting Winnebago Tribe of Nebraska)
 - LNOs deployed to IA, **MO and KS**
 - Volunteer Agency Liaison (VAL) deployed to NE EOC
- FEMA Region VIII
 - Denver MOC at Steady State, continues to monitor
 - LNO deployed to SD EOC
- Major Disaster Declaration approved for NE
- FEMA NWC at Steady State; continues to monitor

National Weather Forecast



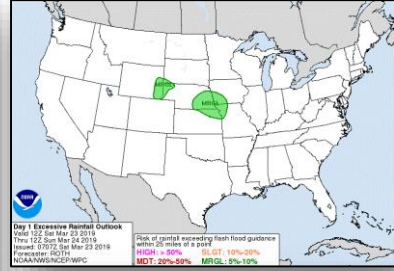
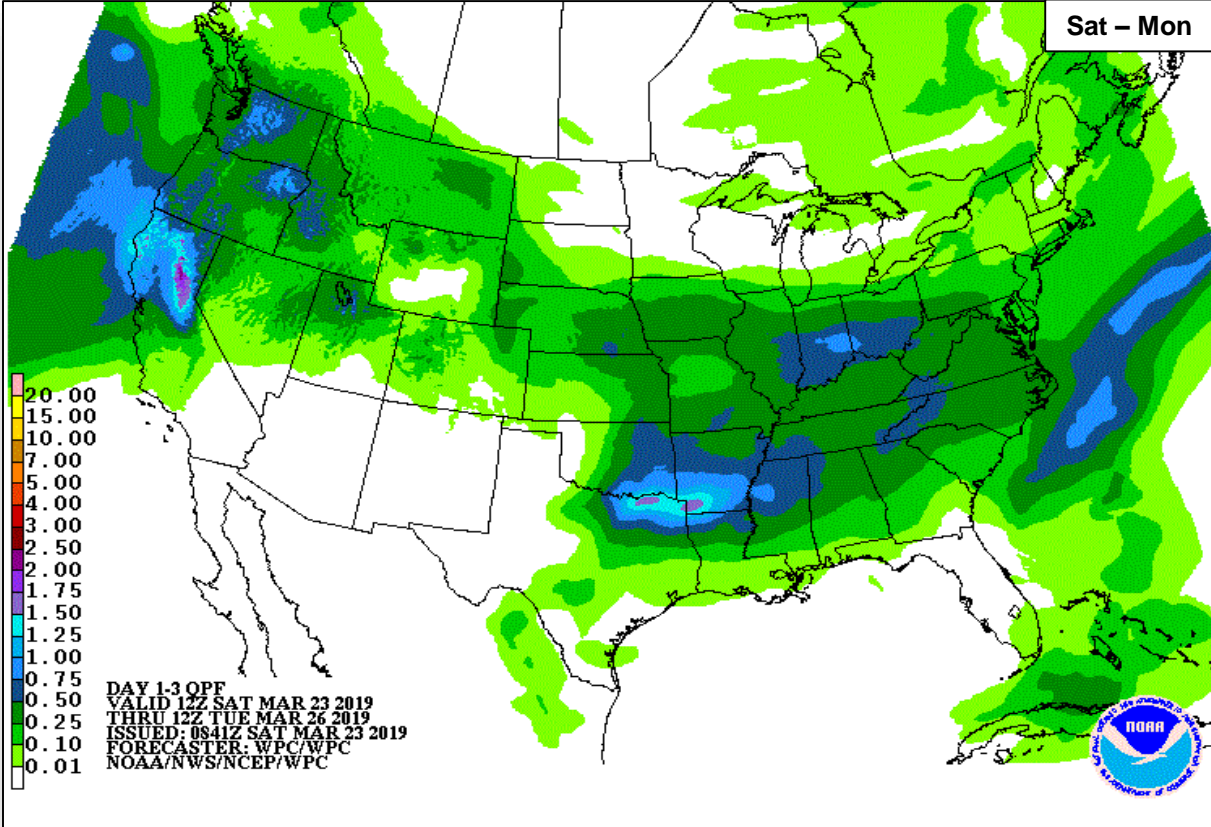
FEMA



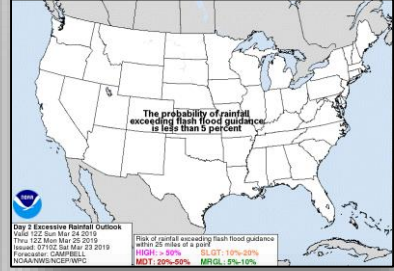
Precipitation Forecast



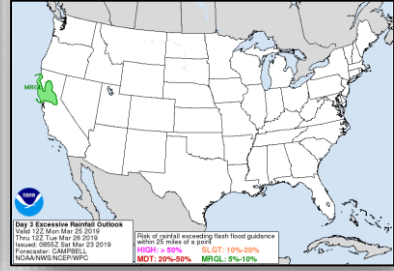
FEMA



Sat



Sun

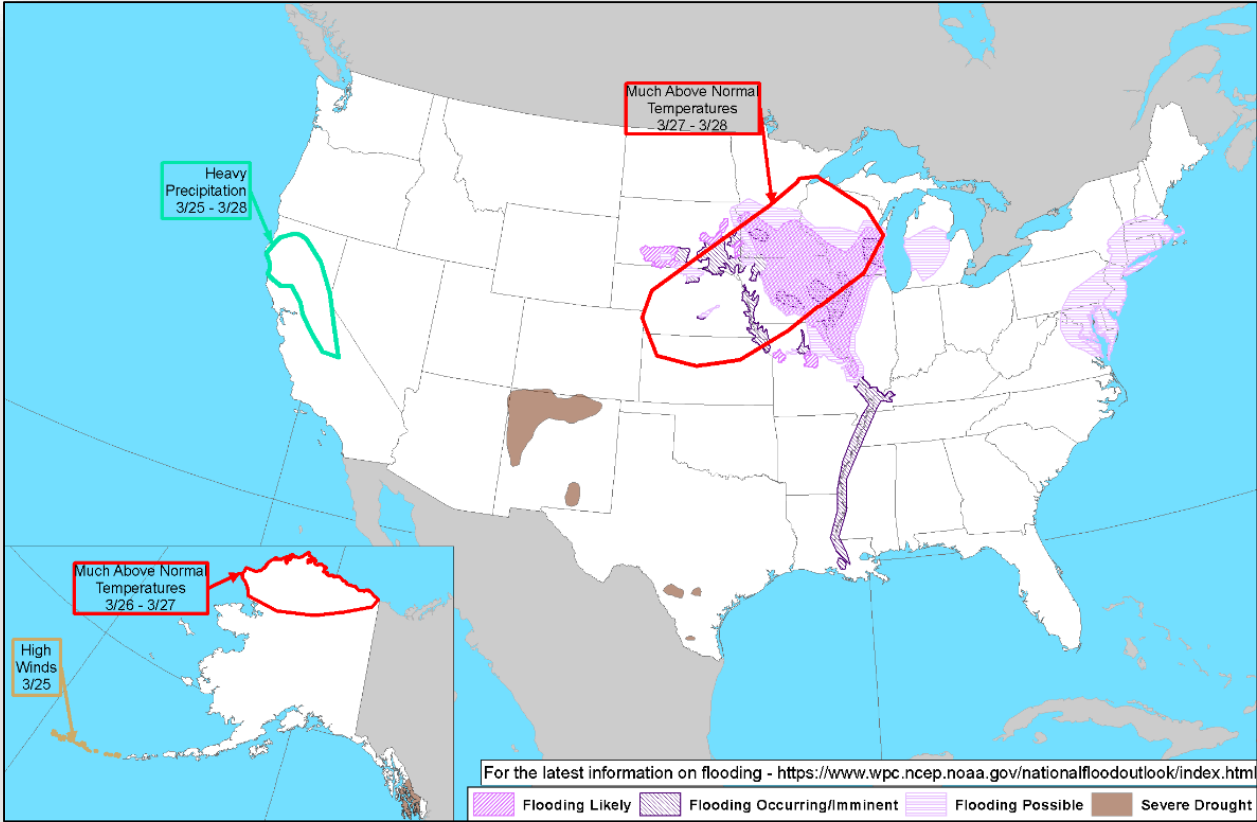


Mon

Hazards Outlook – Mar 25-29



FEMA



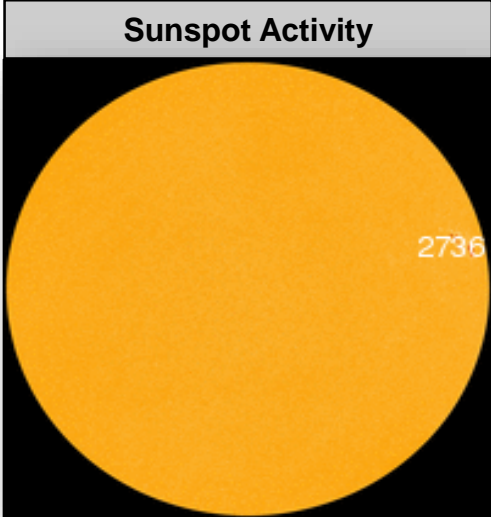
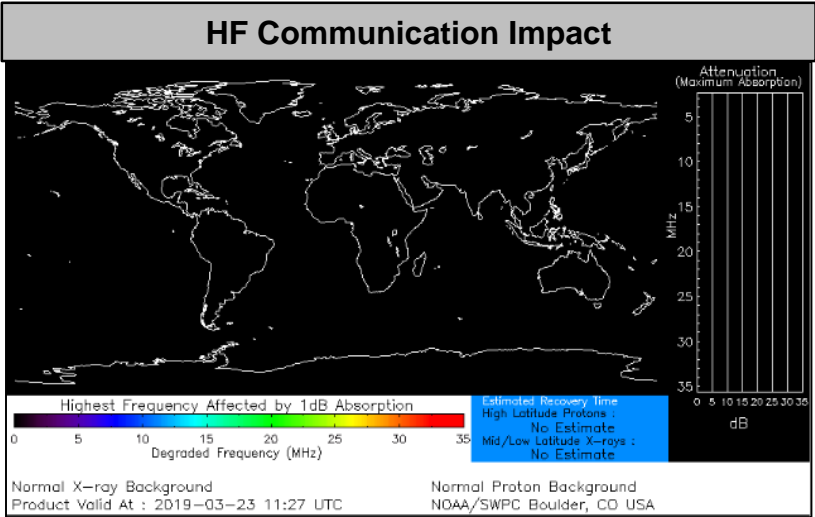
Space Weather



FEMA

	Space Weather Activity	Geomagnetic Storms	Solar Radiation	Radio Blackouts
Past 24 Hours	None	None	None	None
Next 24 Hours	Moderate	G2	None	None

For further information on NOAA Space Weather Scales refer to: <http://www.swpc.noaa.gov/noaa-scales-explanation>



Joint Preliminary Damage Assessments



FEMA

Region	State / Location	Event	IA/PA	Number of Counties		Start – End
				Requested	Complete	
IV	AL	Severe Weather and Flooding February 6-22, 2019	IA	3	3	3/11 – 3/20
			PA	11	6 (+4)	3/11 – TBD
	KY	Severe Weather and Flooding February 6, 2019	IA	0	0	N/A
			PA	58	43 (+4)	3/11 – TBD
	TN	Severe Weather and Flooding February 6, 2019	IA	8	8	3/12 – 3/20
			PA	60	60	3/12 – 3/22
IX	Navajo Nation	Winter Storms February 20-23, 2019	IA	0	0	N/A
			PA	1	0	3/20 – TBD
	FSM (Chuuk and Yap)	Typhoon Wutip February 19-22, 2019	IA	0	0	N/A
			PA	2	0	3/20 – TBD

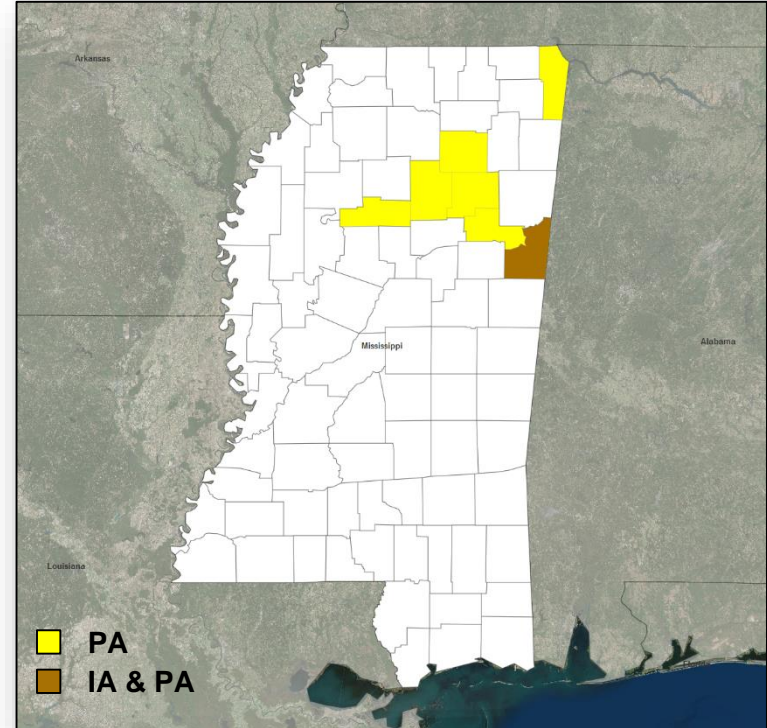
Declaration Request



FEMA

Mississippi

- On March 21, 2019, the Governor requested a Major Disaster Declaration for the State of Mississippi
- For severe storms, straight-line winds, tornado, and flooding beginning on February 22, 2019 and continuing
- Requesting:
 - Individual Assistance for 1 county
 - Public Assistance for 7 counties
 - Hazard Mitigation statewide



Disaster Requests & Declarations



FEMA

Declaration Requests in Process					Requests APPROVED (since last report)	Requests DENIED (since last report)
5	IA	PA	HM	Date Requested	0	0
La Jolla Band of Luiseño Indians – DR Severe Storms, Flooding, Landslides, and Mudslides		X	X	March 8, 2019		
VT – DR (Appeal) Severe Winter Storm		X	X	March 14, 2019		
Cahuilla Band of Indians – DR Severe Storms and Floods		X	X	March 15, 2019		
IA – Severe Storm and Flooding	X	X	X	March 21, 2019		
MS – Severe Storms, Straight-line Winds, Tornado, and Flooding	X	X	X	March 21, 2019		

Readiness – Deployable Teams and Assets



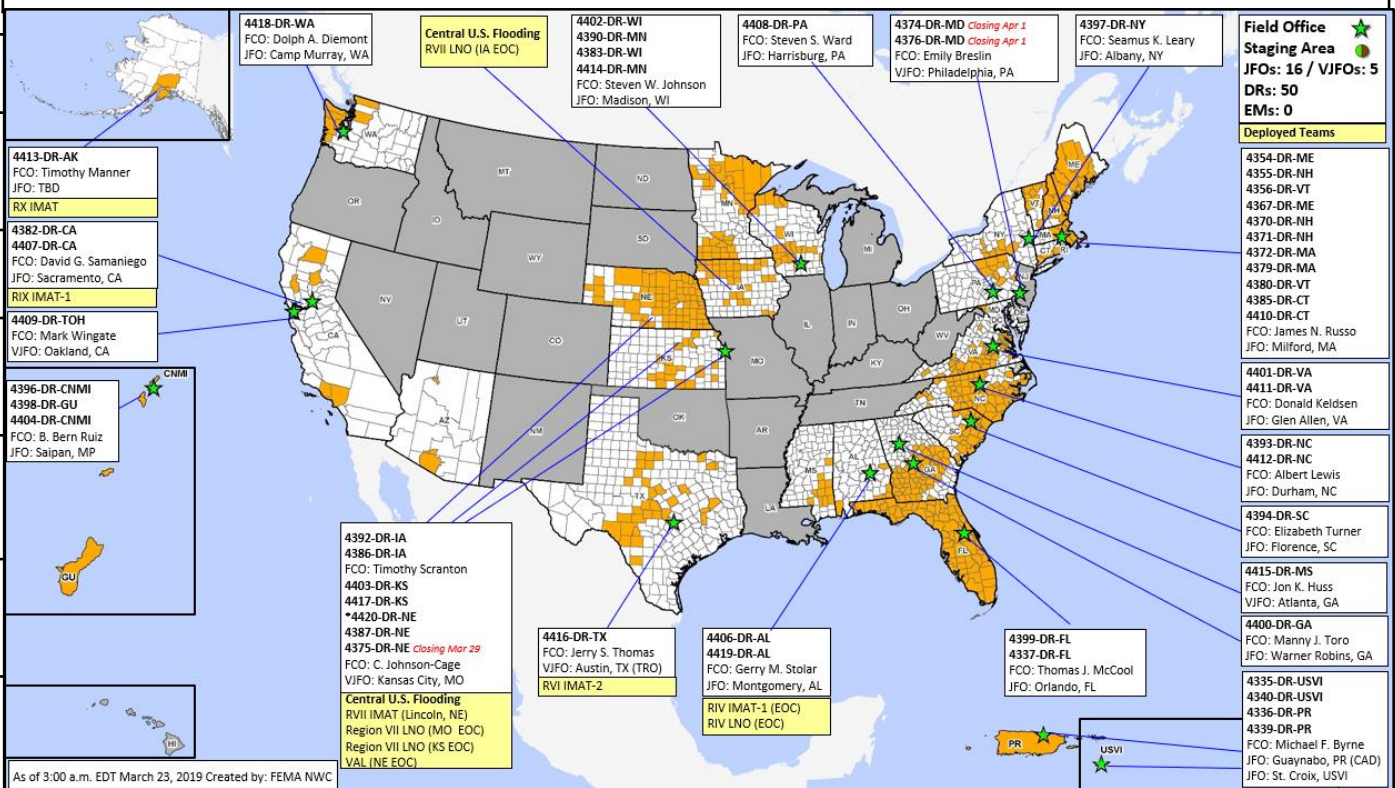
FEMA

National and Regional Resources

IM Workforce	Strength:	▲ 12,994
	Available:	▼ 3,882 / 30%
	Other:	3,527
	Deployed:	▲ 5,585
N-IMAT	East:	Available
	West:	Available
	Crisis:	Available
Regional IMAT (4-6 Teams)	Assigned:	13
	Available:	6
	PMC / NMC:	2
	Deployed:	5
N-ISB Teams (3 Teams)	Team A:	Available
	Team B:	Available
	Team C:	Available
US&R (>66%)	Assigned:	28
	Available:	27 (+1)
	PMC / NMC:	1 (-1)
	Deployed:	0
MERS (>66%)	Assigned:	36
	Available:	36
	PMC / NMC:	0
	Deployed:	0
FCO (=3 Type I)	Assigned:	29
	Available:	6
	PMC / NMC:	0
	Deployed:	23
FDRC (≥3)	Assigned:	12
	Available:	3
	PMC / NMC:	0
	Deployed:	9

Cadres with 25% or Less Availability

EHP 8% (37/456); ER 16% (9/57); FL 15% (25/162); HM 22% (247/1,104); IT 25% (162/645); LOG 19% (253/1,339); OPS 24% (64/265); PA 7% (147/2,188); PLAN 23% (85/376); SAF 11% (6/54); SEC 7% (9/122)



As of 3:00 a.m. EDT March 23, 2019 Created by: FEMA NWC

FEMA Readiness – Activation Teams



FEMA

Status		Activated Team	Activation Level	Activation Times	Reason / Comments
NWC (5 Teams)	Steady State				
NRCC (2 Teams)	Available				Primary – Gold Team
HLT	Available				
RWC / MOCs (10 Regions)	Available				
RRCCs (10 Regions)	Available	Region VII	Level III	Day shift	Flooding

Backup Regions: VI, I, and V



FEMA

FEMA's mission is helping people before, during, and after disasters.

Click [here](#) to subscribe to this briefing.