

The Disaster Center is dedicated to the idea that disaster mitigation is cost effective and individuals pursuing their own interest are the greatest potential force for disaster reduction.

Please consider making a small donation to the Disaster Center



When disaster mitigation is cost effective, we are on the road to bringing disasters to an end.



FEMA

Daily Operations Briefing

Friday, May 3, 2019

8:30 a.m. EDT

Significant Activity – May 2-3



FEMA

Significant Events: None

Tropical Activity:

- Atlantic: [Disturbance 1: Low \(10%\)](#)
- [Western Pacific: Invest 90W south of Guam – No threat to U.S. interests](#)
- Eastern Pacific Hurricane Season starts May 15
- Atlantic and Central Pacific Hurricane Season starts June 1; [28 days](#)

Significant Weather: [Severe thunderstorms, heavy rainfall with flash flooding threat – Parts of the central/eastern U.S.](#)

Declaration Activity: [Major Disaster Declaration – OR](#)

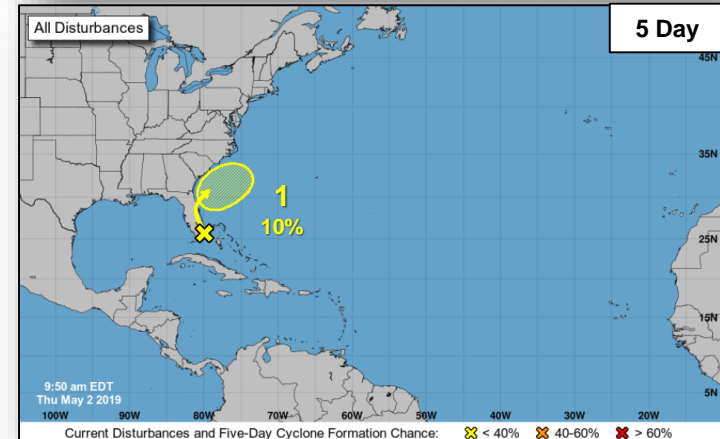
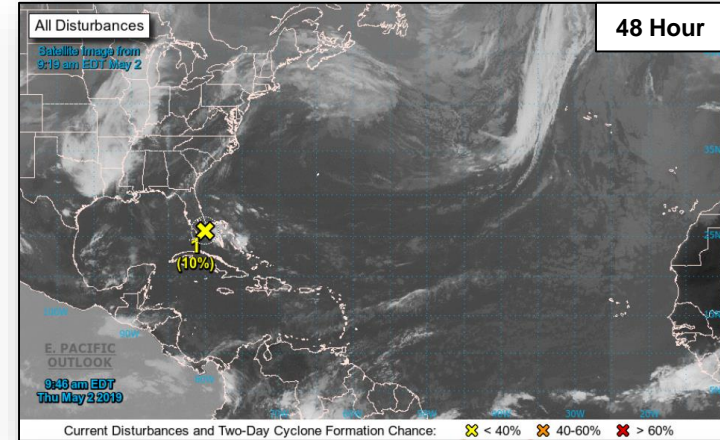
Tropical Outlook – Atlantic



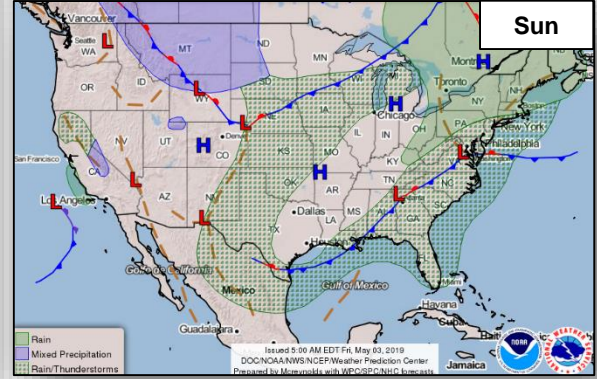
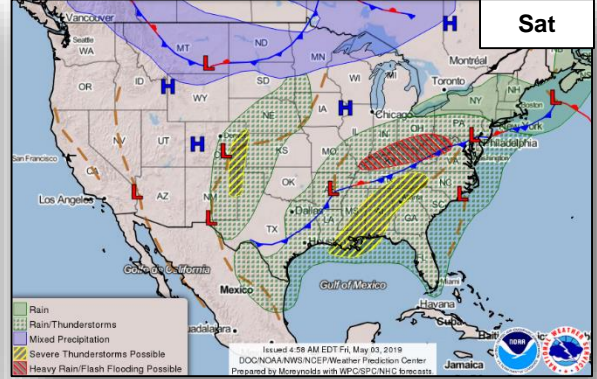
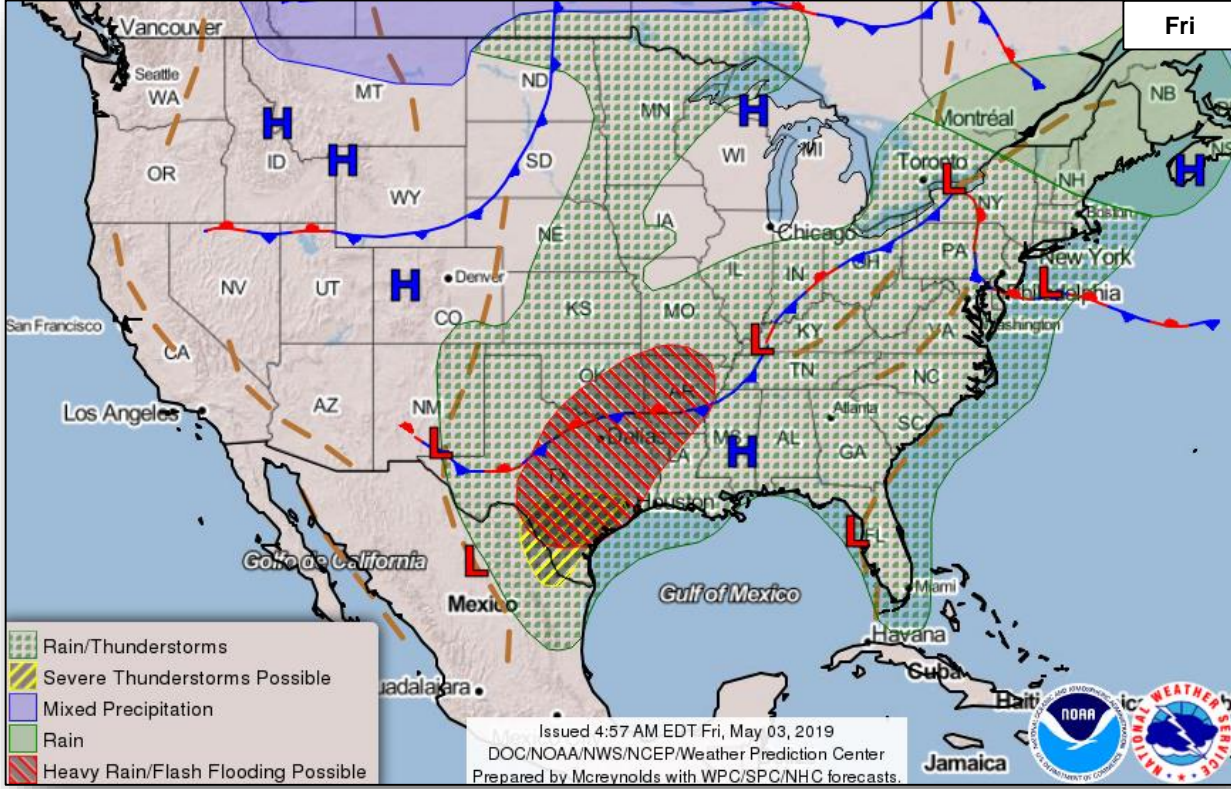
FEMA

Disturbance 1 (As of 9:50 a.m. EDT, May 2)

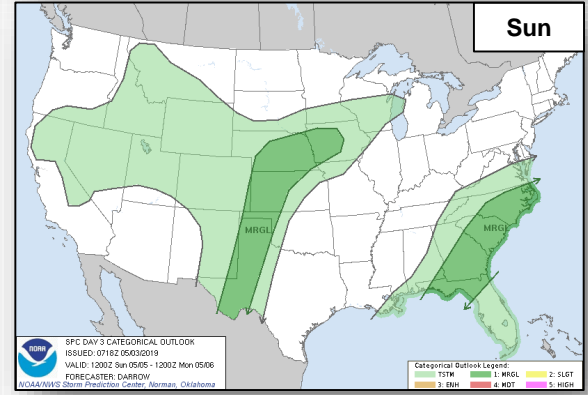
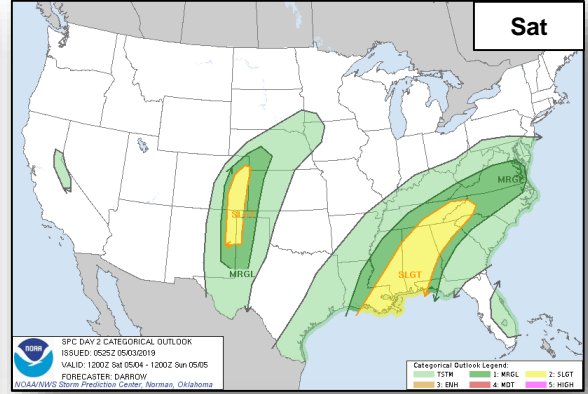
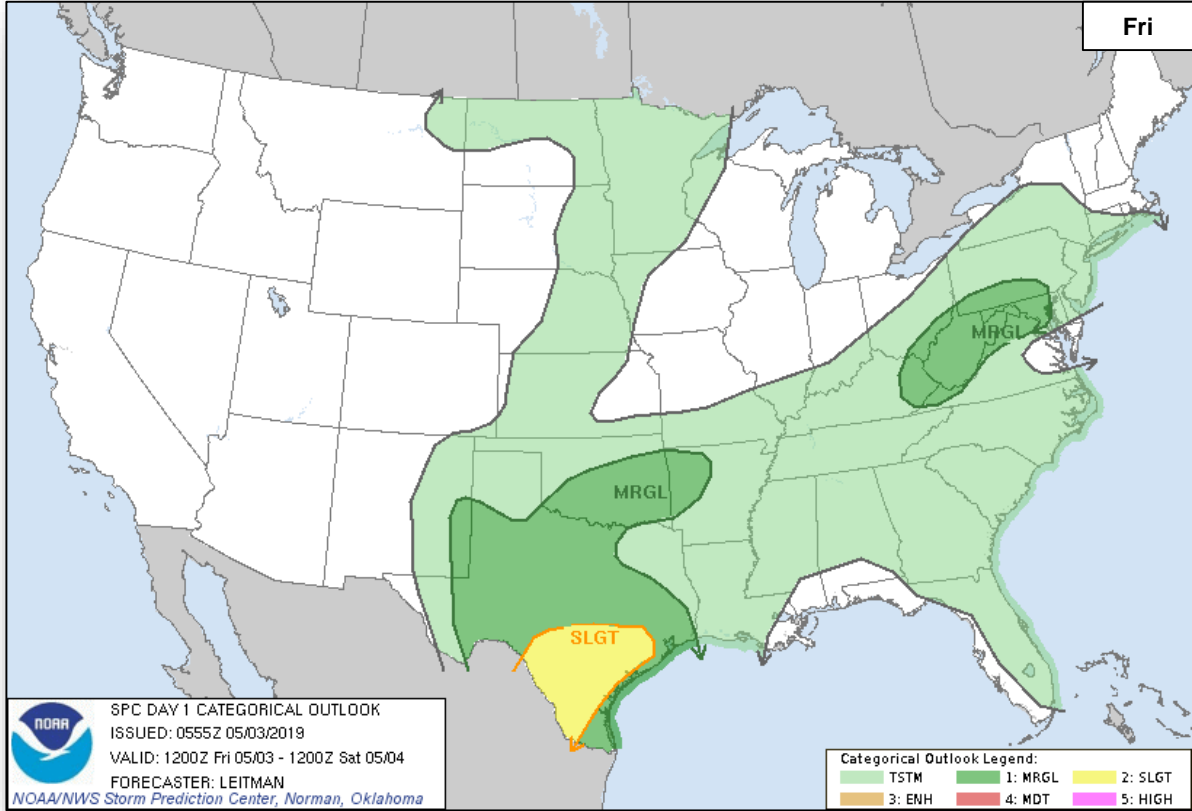
- An area of low pressure extends from southern Florida northeastward for a few hundred miles
- Conditions not expected to be conducive for significant development
- Formation chance through 48 hours: Low (10%)
- Formation chance through 5 days: Low (10%)



National Weather Forecast



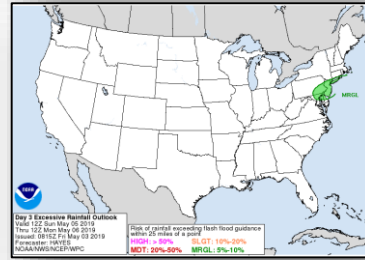
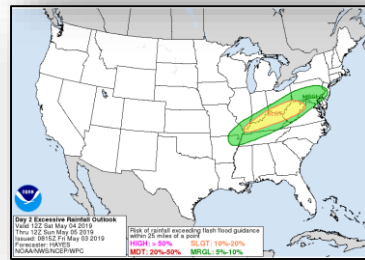
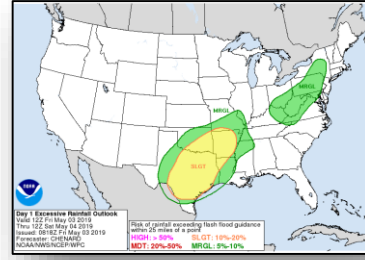
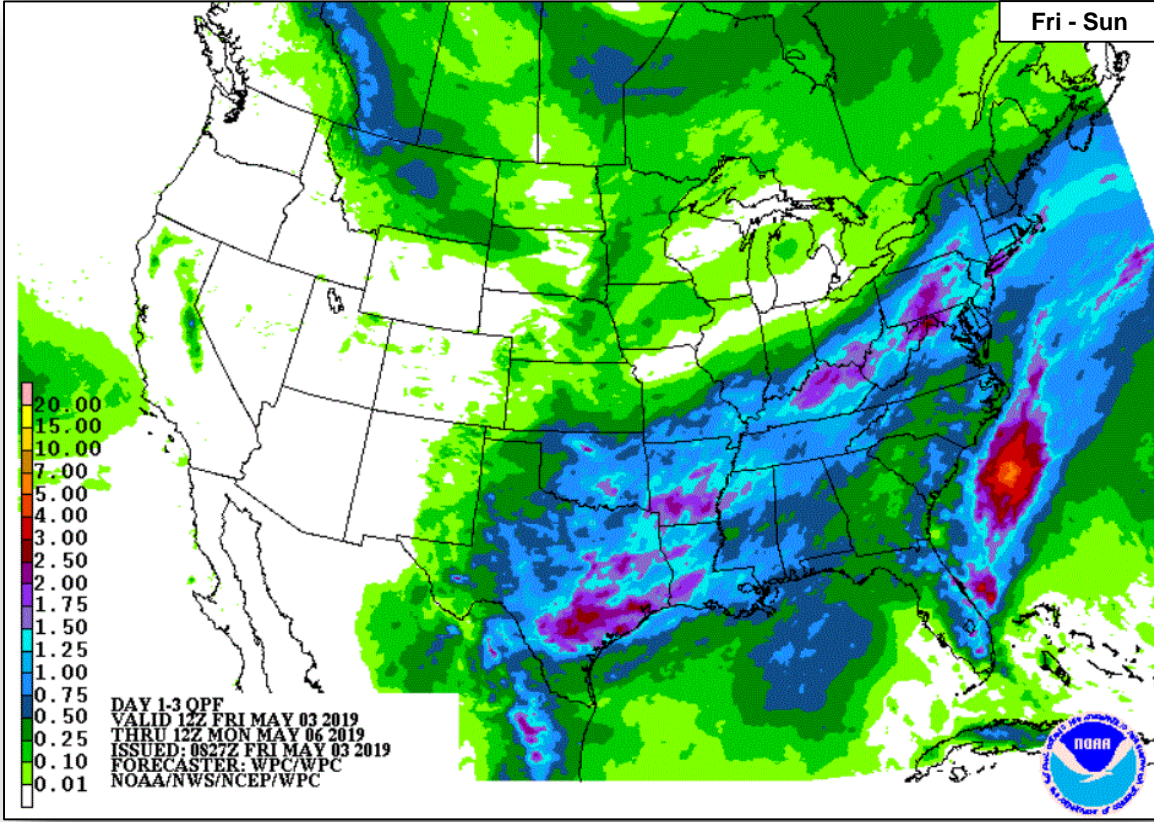
Severe Weather Outlook



Precipitation Forecast



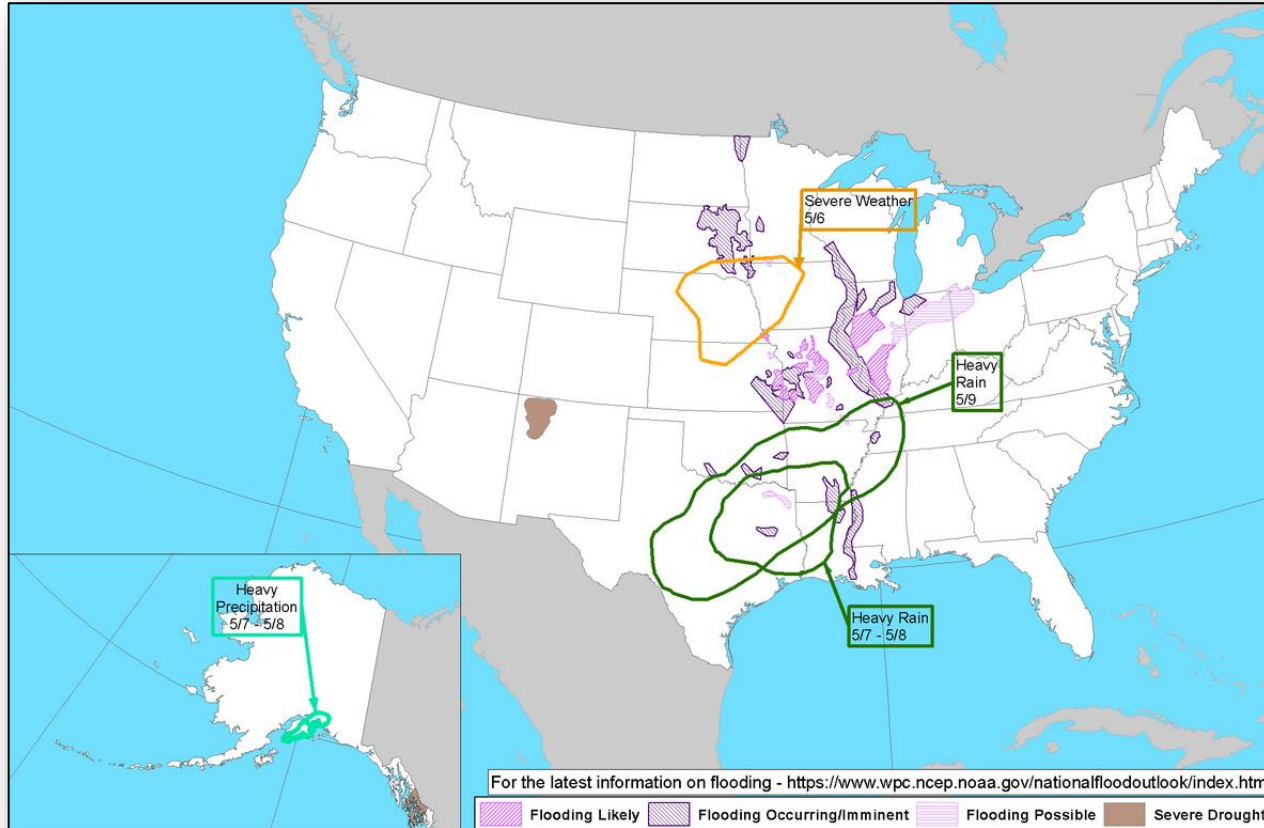
FEMA



Hazards Outlook – May 5-9



FEMA



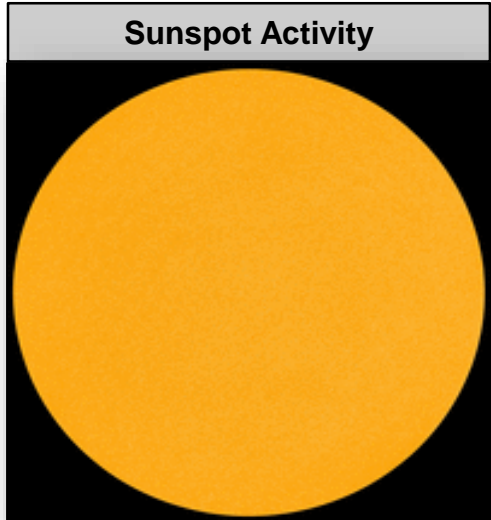
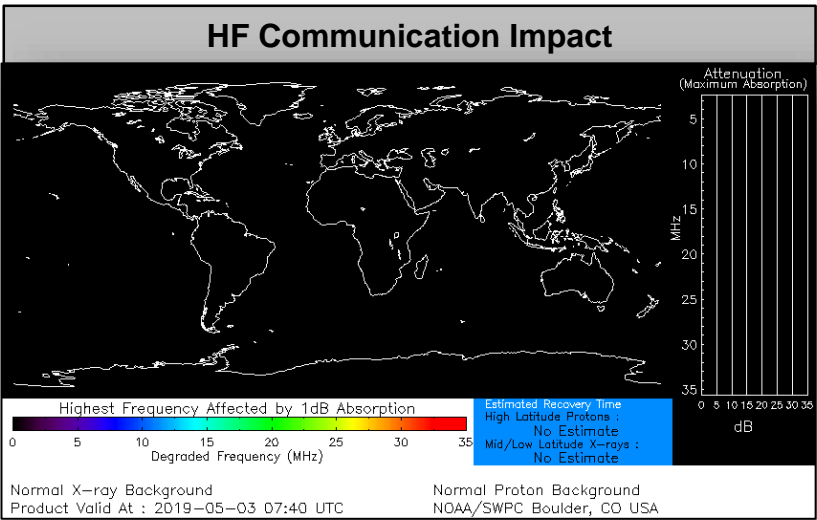
Space Weather



FEMA

	Space Weather Activity	Geomagnetic Storms	Solar Radiation	Radio Blackouts
Past 24 Hours	None	None	None	None
Next 24 Hours	None	None	None	None

For further information on NOAA Space Weather Scales refer to: <http://www.swpc.noaa.gov/noaa-scales-explanation>



Joint Preliminary Damage Assessments



FEMA

Region	State / Location	Event	IA/PA	Number of Counties		Start – End
				Requested	Complete	
I	VT	Flooding April 15, 2019	IA	0	0	N/A
			PA	7	1	4/24 – TBD
VI	LA	Severe Weather April 25 – 27, 2019	IA	3	3	5/1 – 5/2
			PA	0	0	N/A
	TX	Severe storms and tornadoes April 13-15, 2019	IA	5	4	4/19 – TBD
			PA	0	0	N/A
VII	OTN*	Severe Storms and Flooding March 13, 2019 – April 1, 2019	IA	1	0	TBD
			PA	1	1	4/18 – 4/19
	PTN**	Severe Storms and Flooding March 13, 2019 – April 1, 2019	IA	1	0	TBD
			PA	1	1	4/17 – 4/17
X	ID	Flooding 7-12 April, 2019	IA	5	0	TBD
			PA	5	0	TBD

*Omaha Tribe of Nebraska

**Ponca Tribe of Nebraska

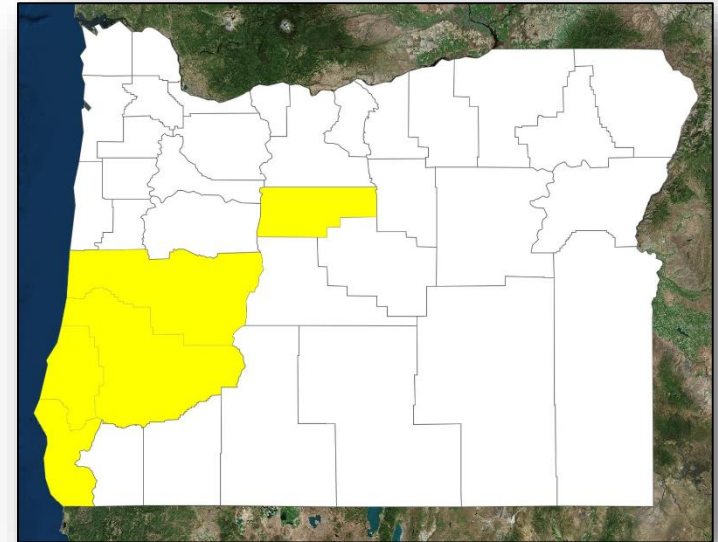
Declaration Approved



FEMA

FEMA-4432-DR-OR

- The President approved a Major Disaster Declaration on May 2, 2019 for the State of Oregon
- For severe winter storms, flooding, landslides, and mudslides that occurred February 23-26, 2019
- Provides:
 - Public Assistance for five counties
 - Hazard Mitigation statewide
- FCO: Rosalyn L. Cole



■ PA

Disaster Requests & Declarations



Declaration Requests in Process					Requests APPROVED (since last report)	Requests DENIED (since last report)
5	IA	PA	HM	Date Requested	1	0
U.S. Territory of Guam – DR Super Typhoon Wutip		X	X	March 25, 2019		
CA – DR Severe Winter Storms, Flooding, Landslides, and Mudslides		X	X	April 13, 2019		
OR – DR Severe Winter Storms, Flooding, Landslides, and Mudslides		X	X	April 16, 2019	May 2, 2019	
Federated States of Micronesia – Super Typhoon Wutip <i>*Request made pursuant to the Compacts of Free Association, not under Stafford Act</i>				April 17, 2019		
MO – DR Severe Storms, Straight-line Winds, and Flooding	X	X	X	April 24, 2019		
Navajo Nation – DR Snowstorms and Flooding		X	X	April 29, 2019		

Readiness – Deployable Teams and Assets

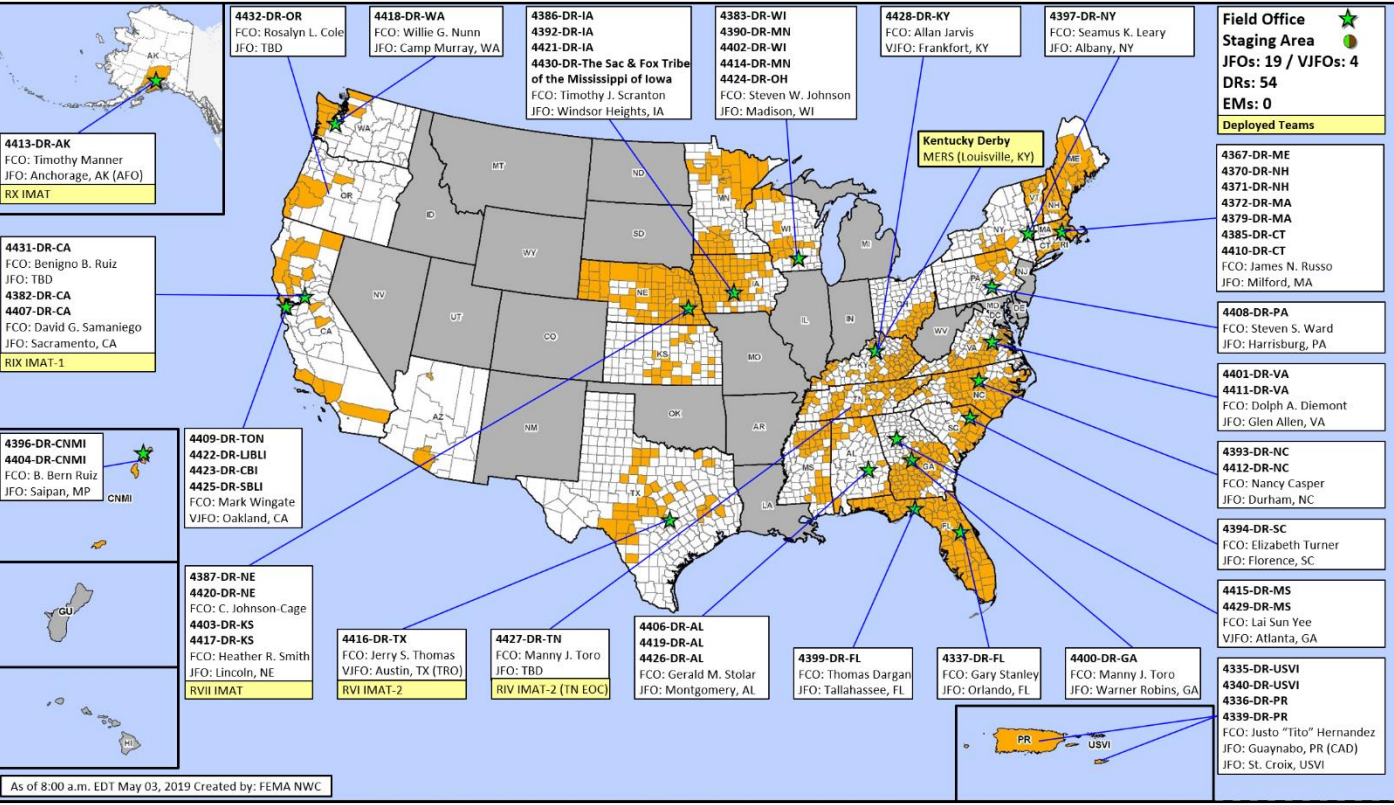


FEMA

National and Regional Resources	
IM Workforce	Strength: ▲ 13,291
	Available: ▼ 3,580 / 27%
	Other: 3,589
	Deployed: ▲ 6,122
N-IMAT	East: Available
	West: Available
	Crisis: Available
Regional IMAT (4-6 Teams)	Assigned: 13
	Available: 6 (+2)
	PMC / NMC: 2
	Deployed: 5 (-2)
N-ISB Teams (3 Teams)	Team A: Available
	Team B: Available
	Team C: Available
US&R (>66%)	Assigned: 28
	Available: 28
	Deployed: 0
MERS (>66%)	Assigned: 36
	Available: 36
	Deployed: 0
FCO (≤1 Type I)	Assigned: 29
	Available: 2
	PMC / NMC: 0
	Deployed: 27
FDRC (=2)	Assigned: 12
	Available: 2
	Deployed: 10

Cadres with 25% or Less Availability

EHP 11% (52/488); ER 14% (8/59); FL 12% (18/153); HM 19% (213/1,129); IT 25% (169/671); LOG 20% (268/1,336); OPS 16% (41/262); PA-NEW 6% (151/2,416); PLAN 18% (71/397); SAF 15% (8/55); SEC 5% (6/125)



FEMA Readiness – Activation Teams



FEMA

Status		Activated Team	Activation Level	Activation Times	Reason / Comments
NWC (5 Teams)	Steady State				
NRCC (2 Teams)	Activated	NRCS	ROC	Day shift	DHS Support Primary – Gold Team
HLT	Available			Scheduled to activate June 1	Atlantic Hurricane Season
RWC/MOCs (10 Regions)	Available				
RRCCs (10 Regions)	Available				

Backup Regions: VIII, VI, & I

Eastern Pacific Hurricane Season starts May 15

Atlantic and Central Pacific Hurricane Season starts June 1; 28 days



FEMA

FEMA's mission is helping people before, during, and after disasters.

Click [here](#) to subscribe to this briefing.