

The Disaster Center is dedicated to the idea that disaster mitigation is cost effective and individuals pursuing their own interest are the greatest potential force for disaster reduction.

Please consider making a small donation to the Disaster Center



When disaster mitigation is cost effective, we are on the road to bringing disasters to an end.



FEMA

Daily Operations Briefing

**Friday, August 10, 2018
8:30 a.m. EDT**

Significant Activity – Aug 9-10



FEMA

Significant Events: CA Wildfires

Tropical Activity:

- Atlantic – Post-Tropical Cyclone Debby – Last Advisory; tropical cyclone activity is not expected during next 48 hours
- Eastern Pacific – Tropical Storm John; Tropical Storm Kristy
- Central Pacific – Hurricane Hector (CAT 4)
- Western Pacific – No activity affecting U.S. interests

Significant Weather:

- Severe thunderstorms possible – Southwest
- Flash flooding possible – Southwest; Southern Rockies to Southern Plains; Mid-Atlantic to Northeast
- Elevated/critical fire weather – Northern CA, NV, OR, & WA
- Isolated dry thunderstorms – OR, WA, & ID
- Red Flag Warnings – CA, OR, WA, ID, & MT

Declaration Activity:

- Major Disaster Declaration Requests
 - Nebraska
 - Havasupai Tribe (AZ)
 - Minnesota (includes Leech Lake Band of Ojibwe, Red Lake Nation, and White Earth Nation)
- FMAG approved – Holy Fire, CA

Holy Fire – California



Fire Name (County)	FMAG Number	Acres Burned	Percent Contained	Evacuations (Residents)	Structures			Fatalities / Injuries
					Threatened	Damaged	Destroyed	
Holy Fire (Riverside)	5268-FM-CA	10,236	5%	Mandatory	9,500 homes	0	12 homes	0 / 2

Current Situation:

- Fire began August 6, 2018 and has burned over 10k acres in Riverside County

Impacts:

- Threatened: 11k (9.5k homes) / Destroyed: 12 (12 homes)
- Highway CA-74 closed in multiple locations

Food, Water and Sheltering:

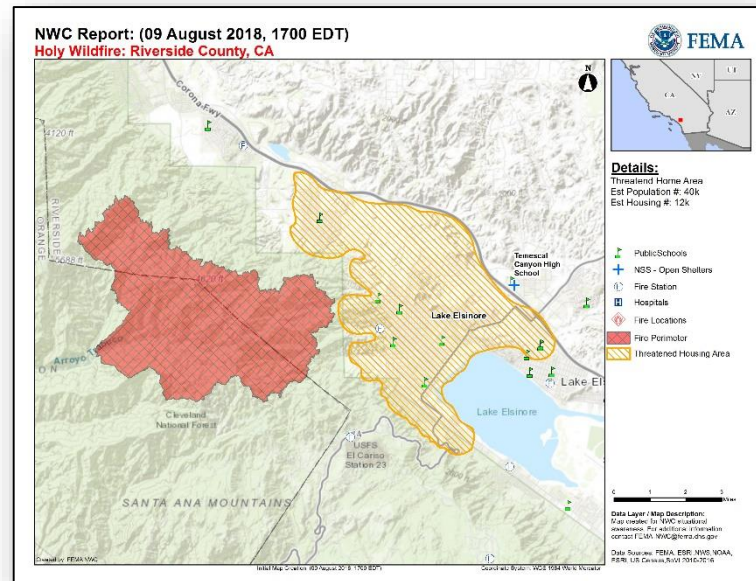
- Evacuations: Mandatory evacuations in effect for 21k people
- Shelters / Occupants: 2 open / 115*

Response:

- CA EOC at Full Activation
- Governor declared a state of emergency for Riverside and Orange counties

FEMA Response:

- FMAG approved on August 9, 2018
- Region IX RWC at Steady State but continues to monitor



California Wildfires



Current Situation:

- 43 new fires, with 11 uncontained large fires statewide

Carr Fire: Acres burned: 179k (+3k); contained: 49% (+2)

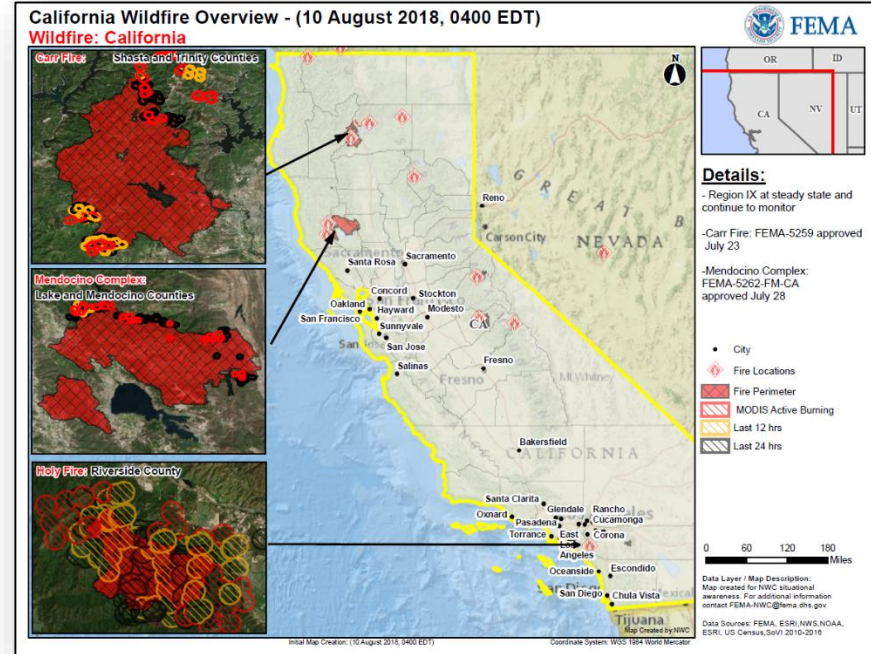
- Structures/Homes:
 - Threatened: 528 (519 homes)
 - Damaged: 282 (193 homes) / Destroyed: 1,599 (1,077 homes)
- Shelters / Occupants: 4 open / 71 (+18)*
- Mandatory evacuations in effect for 67 (-1,233) people

Mendocino Complex: Acres burned: 305k (+3k); contained: 52% (+5)

- Structures / Homes:
 - Threatened: 9,200 (9k homes)
 - Damaged: 27 (12 homes) / Destroyed: 229 (119 homes)
- Mandatory and voluntary evacuations in effect for 21k people
- Shelters / Occupants: 5 open / 33 (-305)*

Holy Fire: Acres burned: 10k; contained: 5%

- Structures / Homes:
 - Threatened: 11k (9.5k homes)
 - Destroyed: 12 (12 homes)
- Mandatory evacuations in effect for 21k people
- Shelters / Occupants: 2 open / 115*



Declaration Activity

- DR: Carr Fire: FEMA-4382-DR-CA (IA & PA for Shasta County)
- JFO established with FEMA RIX IMAT-2, two LNOs, DCO, & ESFs (1, 3, 4, 6, 7, 12) deployed to CA EOC
- FMAGs: Carr Fire (5259-FM); Mendocino Complex (5262-FM); Holy Fire (5268-FM)

Wildfire Summary



FEMA

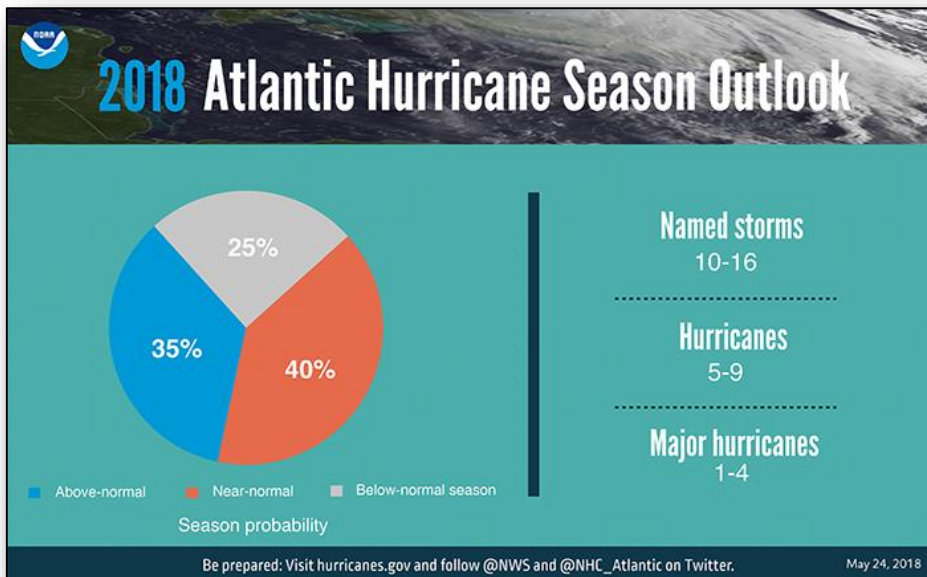
Fire Name (County)	FMAG Number	Acres Burned	Percent Contained	Evacuations (Residents)	Structures			Fatalities / Injuries
					Threatened	Damaged	Destroyed	
Utah (1)								
Hilltop Fire (Sanpete)	5267-FM-UT	1,846 (+8)	61% (+49)	Mandatory	2 (-318) (2 homes)	1 home	2 homes	0 / 1

NOAA Hurricane Prediction Update

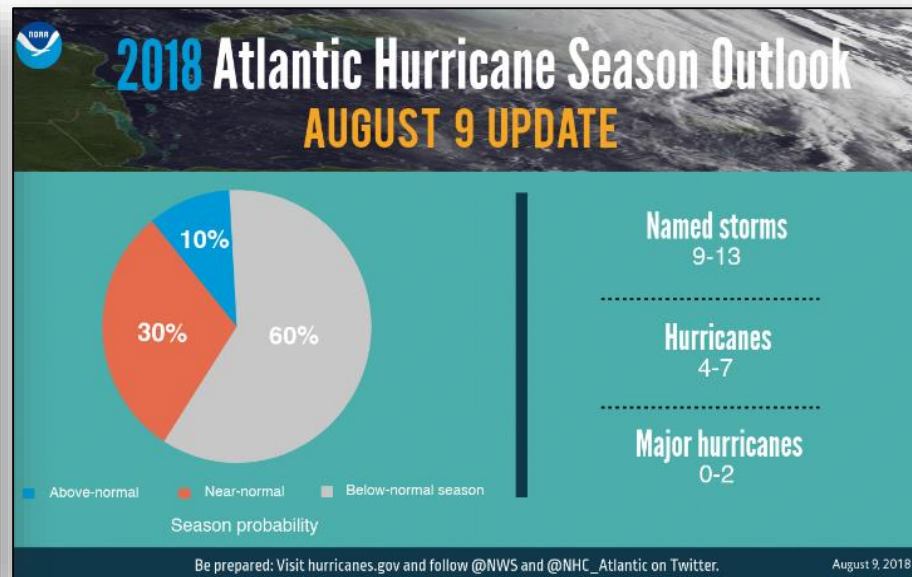


NOAA Forecasters Lower Atlantic Hurricane Season Prediction

Preparedness still key as more storms expected to develop



May 2018 Forecast



August Update

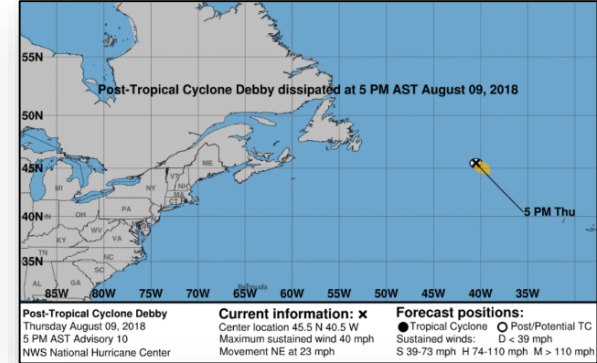
“There are still more storms to come – the hurricane season is far from being over. We urge continued preparedness and vigilance,” said Gerry Bell, Ph.D., lead seasonal hurricane forecaster at NOAA’s Climate Prediction Center

Tropical Outlook – Atlantic



Post-Tropical Cyclone Debby (Advisory #10 as of 5:00 p.m. EDT) – **FINAL**

- Was located 865 miles NW of the Azores
- Dissipated at 5:00 pm EDT August 9, 2018



Tropical Outlook – Eastern Pacific

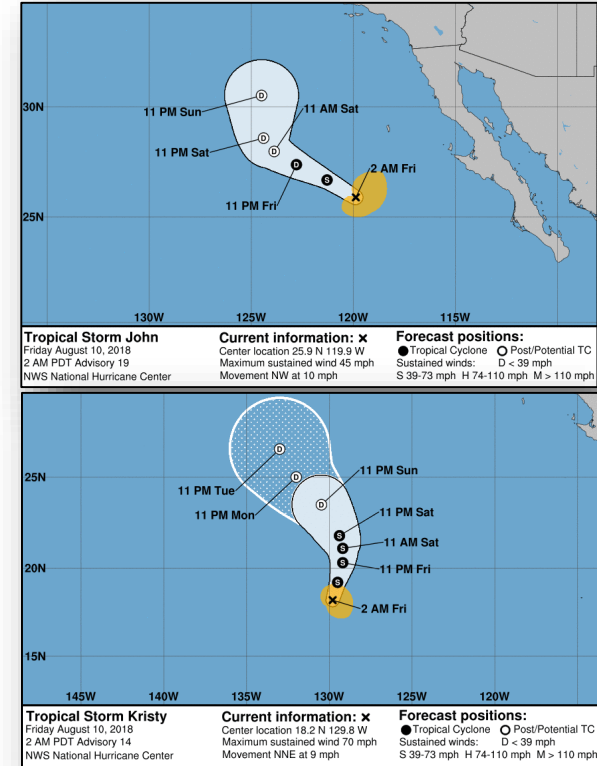


Tropical Storm John (Advisory #19 as of 5:00 a.m. EDT)

- Located 660 miles WNW of southern tip of Baja California
- Moving NW at 10 mph; maximum sustained winds 45 mph
- Tropical-storm-force winds extend 115 miles
- Will likely become a depression later today and a remnant low this weekend

Tropical Storm Kristy (Advisory #14 as of 5:00 a.m. EDT)

- Located 1,325 miles W of southern tip of Baja California
- Moving NNE at 9 mph; maximum sustained winds 70 mph
- Still a chance to briefly become a hurricane this morning but gradual weakening is expected to begin by tonight and continue through the weekend
- Tropical-storm-force winds extend 90 miles



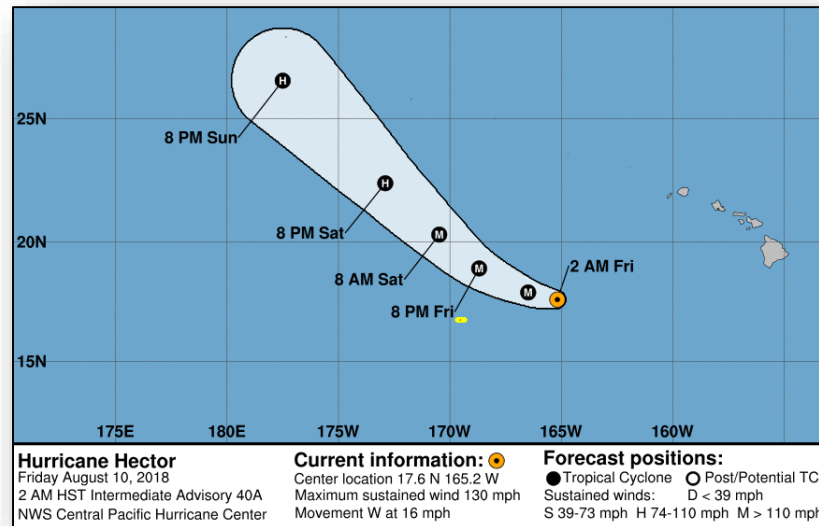
Tropical Outlook – Central Pacific



FEMA

Hurricane Hector (CAT 4): (Advisory #40A as of 5:00 a.m. EDT)

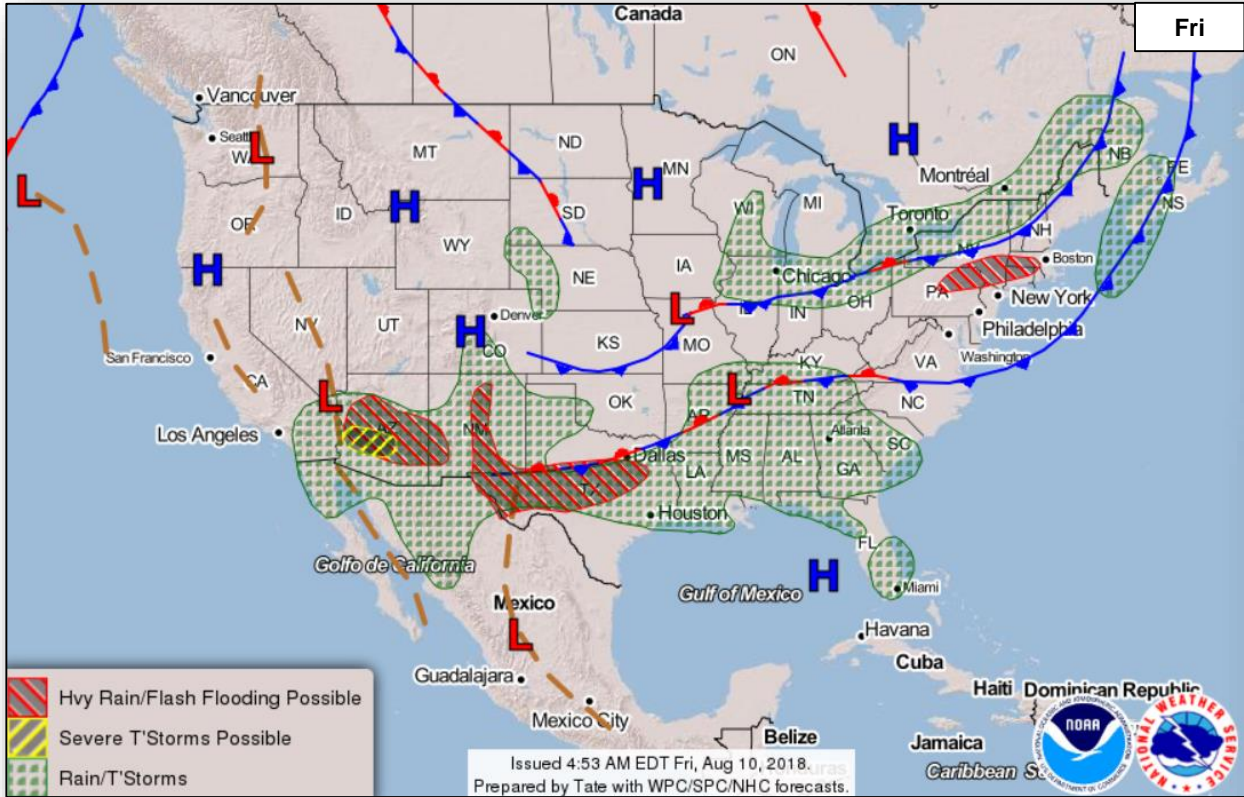
- Located 540 miles WSW of Honolulu, Hawaii
- Hector is moving away from Hawaii
- Moving W at 16 mph
- Maximum sustained winds 130 mph
- Hurricane-force winds extend 35 miles
- Tropical-storm-force winds extend 110 miles



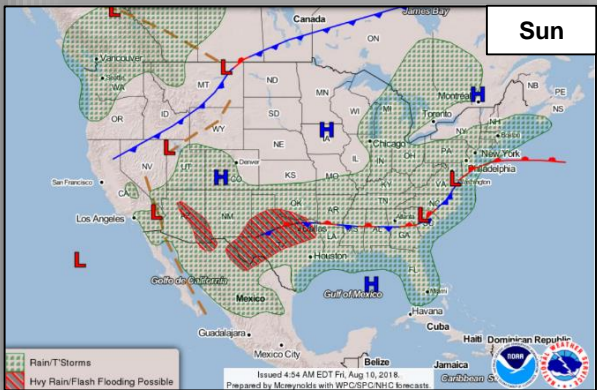
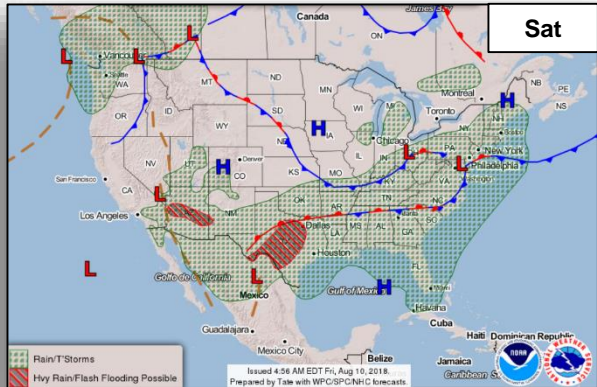
National Weather Forecast



FEMA



- Hvy Rain/Flash Flooding Possible
- Severe T'Storms Possible
- Rain/T'Storms

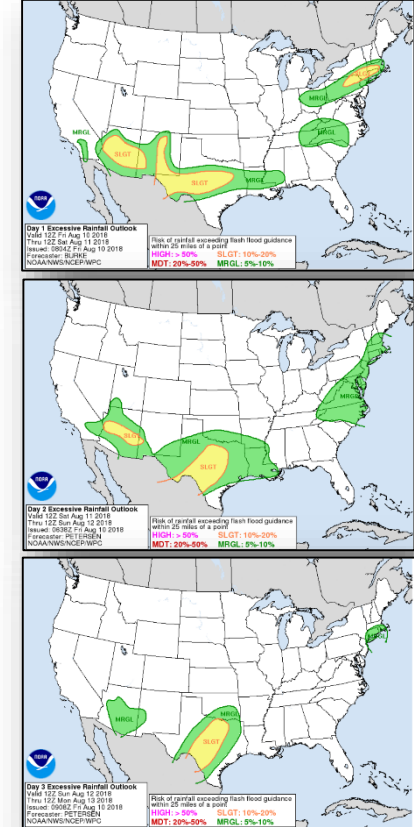
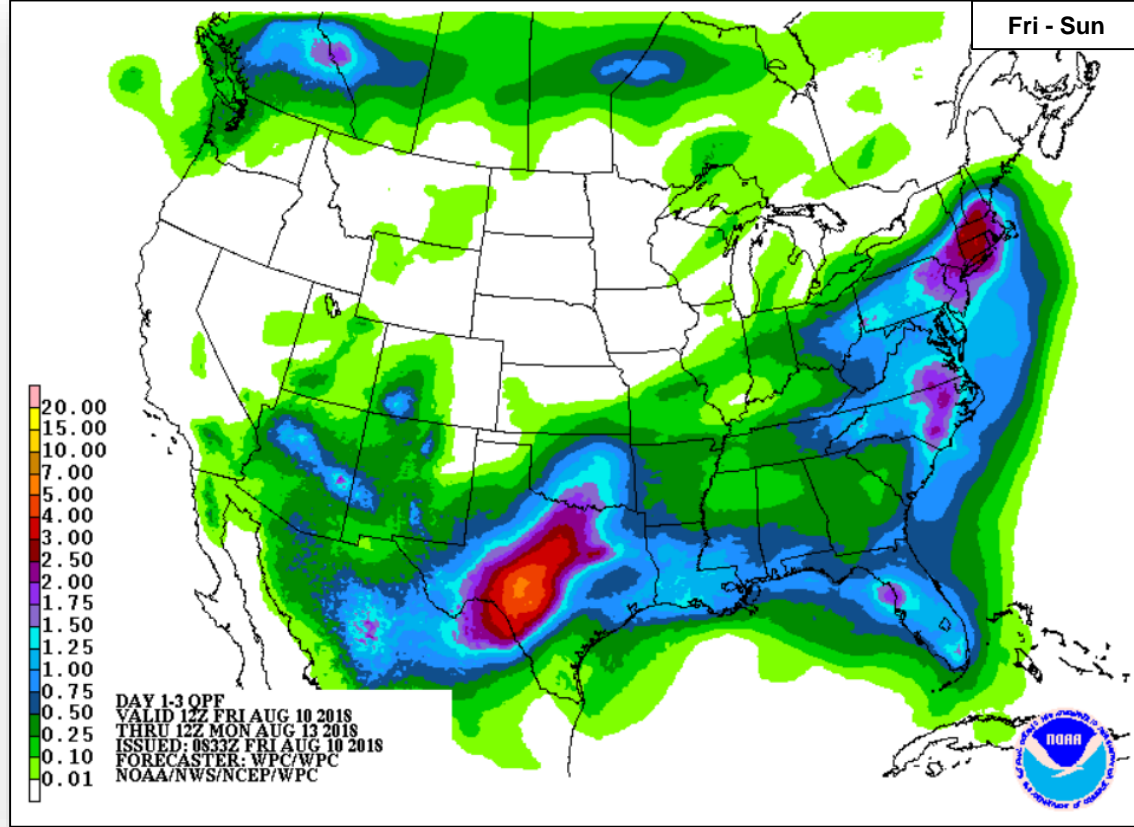


- Rain/T'Storms
- Hvy Rain/Flash Flooding Possible

Precipitation / Excessive Rainfall Forecast



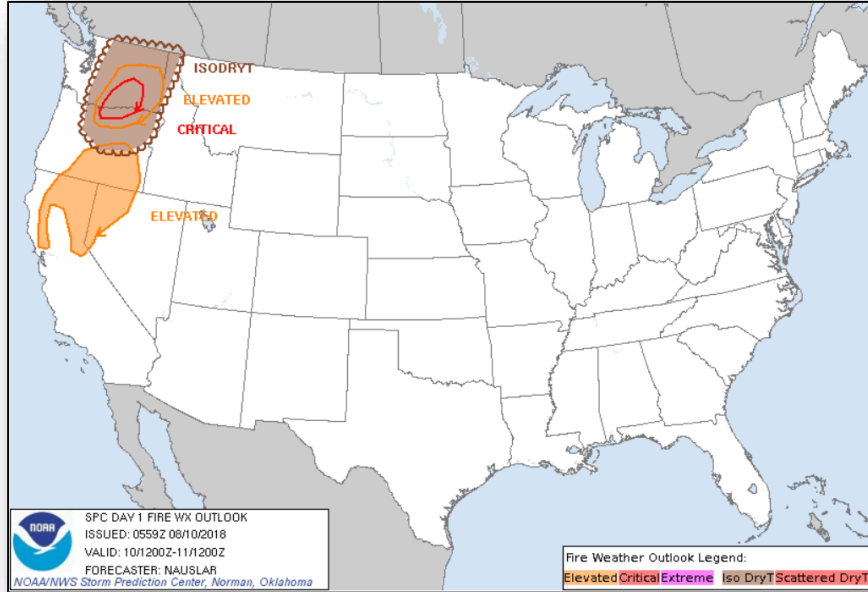
FEMA



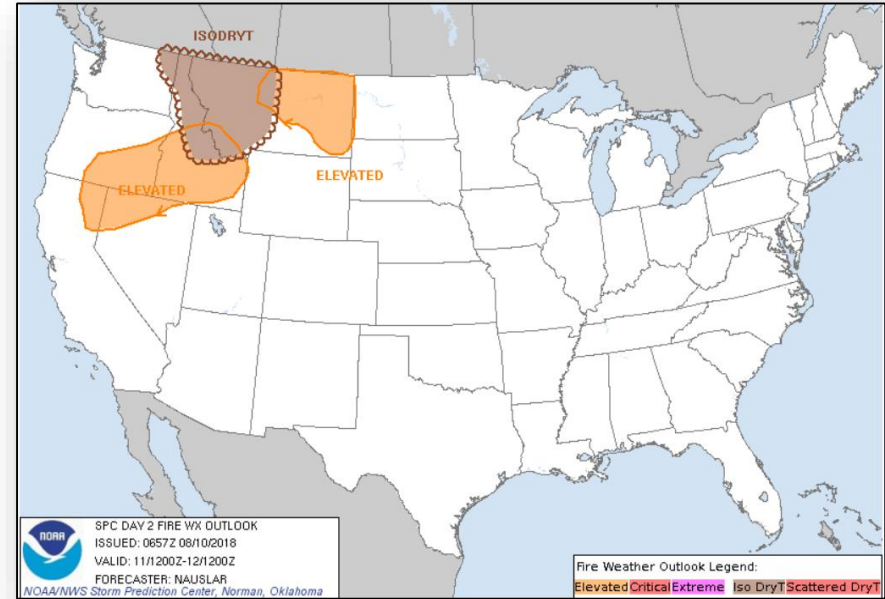
Fire Weather Outlook



FEMA



Friday

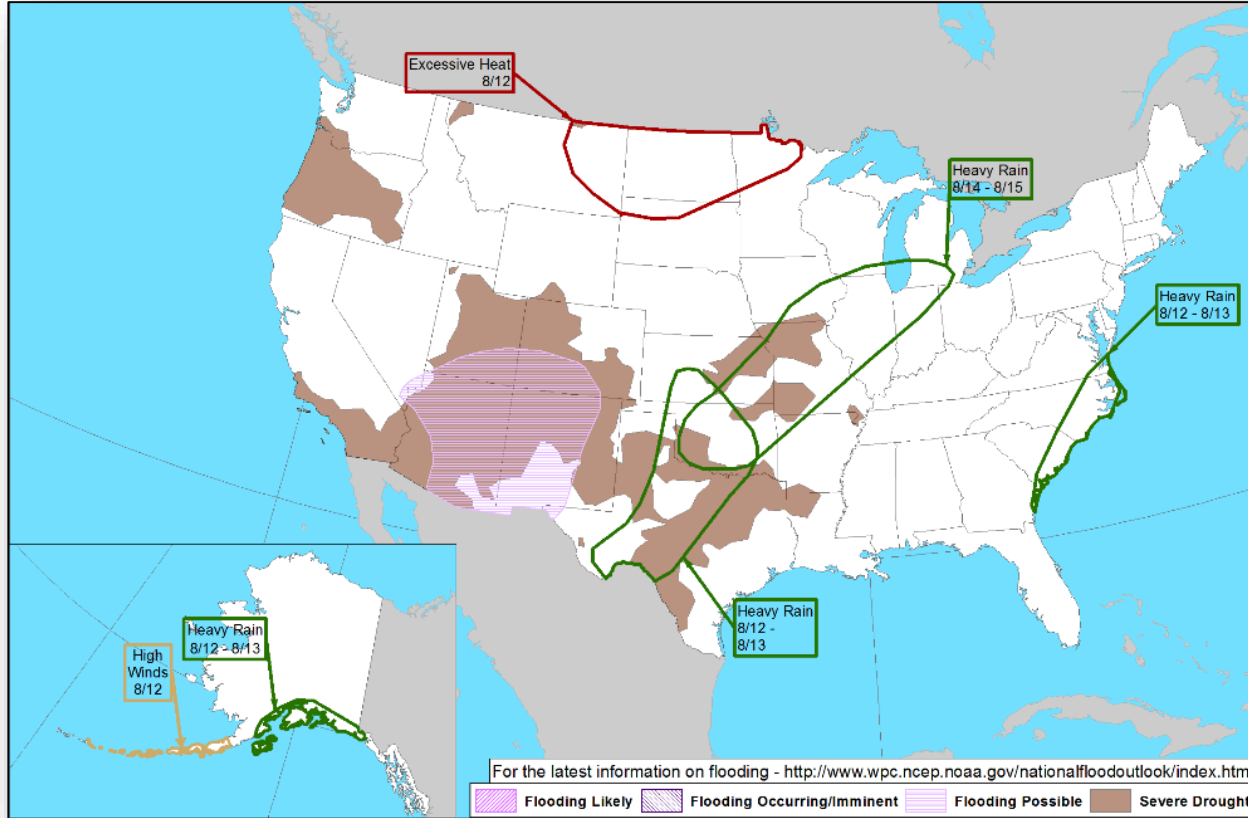


Saturday

Hazards Outlook – Aug 12-16



FEMA



Joint Preliminary Damage Assessments



FEMA

Region	State / Location	Event	IA / PA	Number of Counties		Start – End
				Requested	Completed	
VII	IA	Tornado July 19, 2018	IA	2	0	8/13 – TBD
			PA	5	0	8/7 – TBD

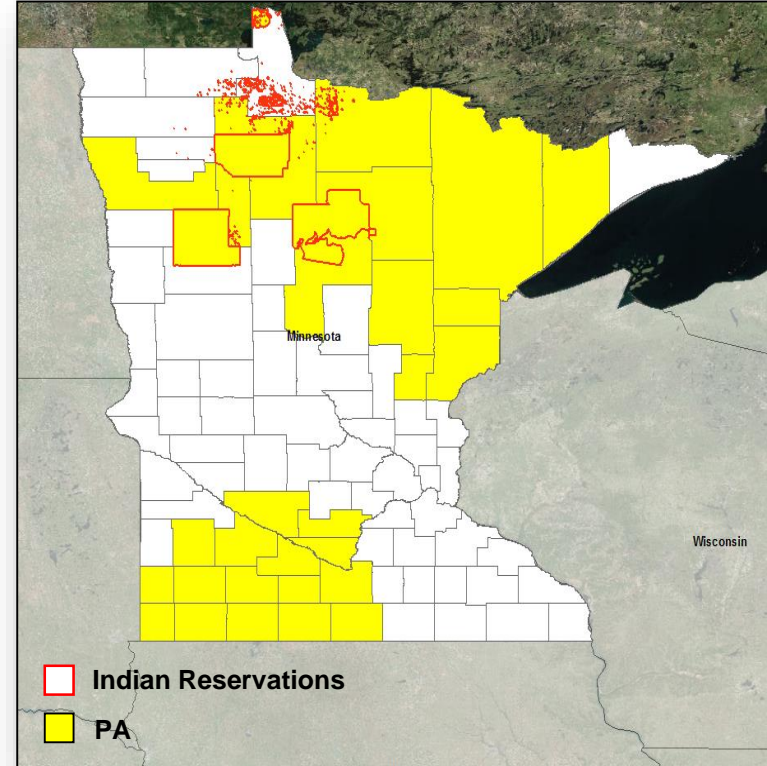
Declaration Request



FEMA

Minnesota & Three Reservations

- The Governor requested a Major Disaster Declaration for the State of Minnesota as well as the Leech Lake Band of Ojibwe, Red Lake Nation, and White Earth Nation reservations on August 7, 2018
- For severe storms, tornadoes, straight-line winds, and flooding during the period of June 15 to July 12, 2018
- Requesting:
 - Public Assistance for 28 counties and 3 tribal reservations
 - Hazard Mitigation statewide, including tribal lands



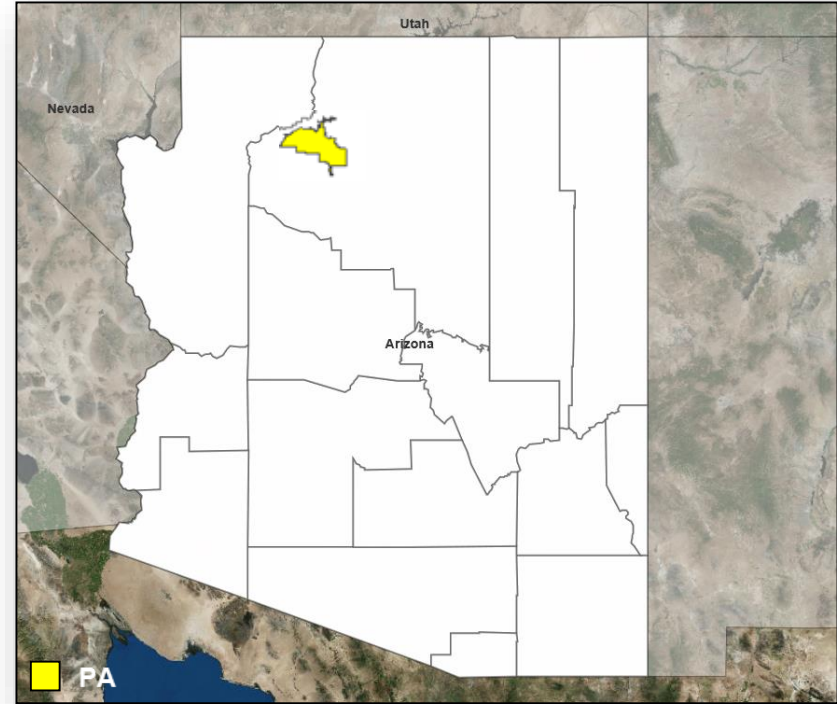
Declaration Request



FEMA

Havasupai Indian Reservation

- The Chairwoman requested a Major Disaster Declaration for the Havasupai Tribe on August 8, 2018
- For severe storms, flooding, and landslides during the period of July 11-12, 2018
- Requesting:
 - Public Assistance
 - Hazard Mitigation



PA

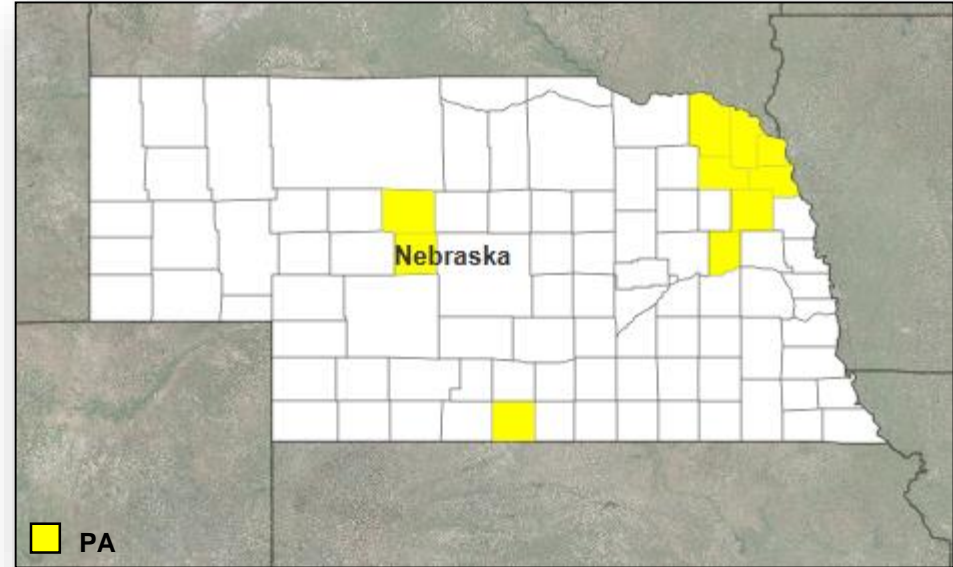
Declaration Request



FEMA

Nebraska

- The Governor requested a Major Disaster Declaration for the State of Nebraska on August 8, 2018
- For severe storms, tornadoes, straight-line winds, and flooding during the period of June 17 to July 1, 2018
- Requesting:
 - Public Assistance for 10 counties
 - Hazard Mitigation statewide



Disaster Requests & Declarations



FEMA

Declaration Requests in Process					Requests APPROVED (since last report)	Requests DENIED (since last report)
12	IA	PA	HM	Date Requested	0	0
SD – DR Severe Storms and Flooding		X	X	June 14, 2018		
MT – DR Flooding		X	X	June 18, 2018		
LA – DR Flooding		X	X	June 29, 2018		
AK – DR Flooding		X	X	June 28, 2018		
CT – DR Severe Storm, Tornado & Straight-line Winds	X	X	X	July 9, 2018		
WI – DR Severe Storms, Straight-line Winds & Flooding		X	X	July 20, 2018		
Confederated Tribes of Colville Reservation – DR Flooding		X	X	July 27, 2018		
NC – DR Severe Storms, Flooding, Landslides & Mudslides	X	X	X	July 30, 2018		
IA – DR Severe Storms, Tornadoes, Straight-line Winds & Flooding	X	X	X	August 1, 2018		
MN (+3 Tribes)* – DR Severe Storms, Tornadoes, Straight-line Winds & Flooding		X	X	August 7, 2018		
Havasupai Reservation (AZ) – DR Severe Storms, Flooding, & Landslides		X	X	August 8, 2018		
NE – DR Severe Storms, Tornadoes, Straight-line Winds & Flooding		X	X	August 8, 2018		

**Leech Lake Band of Ojibwe, Red Lake Nation, and White Earth Nation*

Readiness – Deployable Teams and Assets



FEMA

Resource	Force Strength	Available	Deployed	Other	Cadres with 25% or Less Availability
IM Workforce	11,797 ▲	4,112 ▲ 35%	4,235 ▲	3,450	EHP 11% (45/395); HM 23% (221/966); OPS 20% (51/251); PA 11% (197/1,857); SAF 21% (11/53); SEC 16% (16/102)
National IMATs* (3 Teams)	East 1: East 2: West:	B-2 Charlie B-48			
Regional IMATs (4 - 6 Teams)	Assigned: Available: PMC / NMC: Deployed:	13 5 4 4			
US&R (≥ 66%)	Assigned: Available: PMC / NMC: Deployed:	28 28 0 0			
MERS (≥ 66%)	Assigned: Available: PMC / NMC: Deployed:	36 33 0 3			
FCO (≤ 1 Type I)	Assigned: Available: PMC / NMC: Deployed:	33 13 1 19			
FDRC (≥ 3)	Assigned: Available: PMC / NMC: Deployed:	14 6 1 7			

* **B-2 Status:** Assemble ≤ 2-hrs, On Site ≤ 18-hrs; **B-48 Status:** Assemble and deploy ≤ 48hrs; **Charlie Status:** No team assemble time requirement

FEMA Readiness – Activation Teams



FEMA

Status		Activated Team	Activation Level	Activation Times	Reason / Comments
NWC (5 Teams)	Steady State			August 12, 2018 (Day and night shift)	Scheduled relocation to Mt. Weather
NRCC (2 Teams)	Available				
HLT (1 Team)	Activated				
RWC / MOCs (10 Regions)	Steady State				
RRCCs (10 Regions)	Available				

Backup Regions: IV, VIII, & V



FEMA

FEMA's mission is helping people before, during, and after disasters.