

The Disaster Center is dedicated to the idea that disaster mitigation is cost effective and individuals pursuing their own interest are the greatest potential force for disaster reduction.

Please consider making a small donation to the Disaster Center



When disaster mitigation is cost effective, we are on the road to bringing disasters to an end.



FEMA

Daily Operations Briefing

**Sunday, August 12, 2018
8:30 a.m. EDT**

Significant Activity – Aug 11-12



FEMA

Significant Events: Wildfires – CA

Tropical Activity:

- Atlantic – Disturbance 1: Low (10%)
- Eastern Pacific – Disturbance 1: Low (20%); Disturbance 2: Low (near 0%)
- Central Pacific – Hurricane Hector (CAT 1)
- Western Pacific – No activity affecting U.S. interests

Significant Weather:

- Elevated/critical fire weather – ID, MT, & Northern Plains
- Isolated dry thunderstorms – MT, ID, WY, NV, UT, & CO
- Flash Flooding possible – TX
- Red Flag Warnings – NV, CA, ID, MT, ND, SD, & WY

Declaration Activity:

- Major Disaster Declaration approved – WI
- FMAGs approved:
 - Hawk Fire, WA
 - Cougar Creek Fire, WA
 - Grass Valley Fire, WA

Wildfires – CA



Current Situation:

- 36 new fires and 12 uncontained large fires statewide
- Fire risk remains high

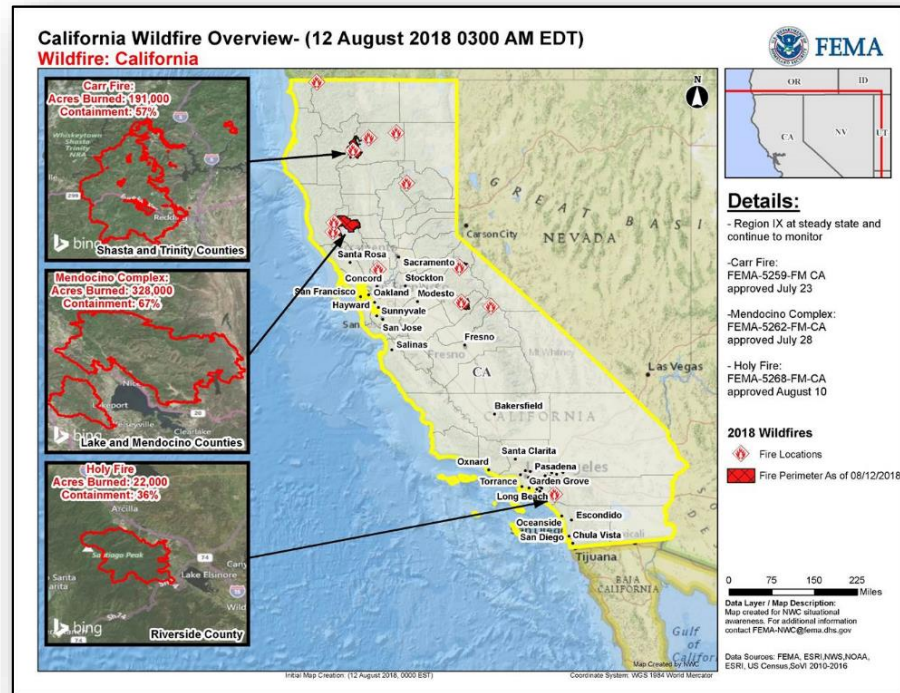
Impacts:

Carr Fire: Acres burned: 191k (+7.4k); contained: 57% (+4)

- Fatalities / Injuries: 7 / 1
- Structures:
 - Threatened: 528 (511 homes)
 - Damaged: 282 (191 homes)
 - Destroyed: 1,599 (1,077 homes)
- Shelters / Occupants: 0 (-1) / 0 (-58)*
- Mandatory evacuations in effect for 67 people

Mendocino Complex: Acres burned: 328k (+16k); contained: 67% (+7)

- Fatalities / Injuries: 0 / 2
- Structures:
 - Threatened: 1,525 structures (1,500 homes)
 - Damaged: 37 (+10) structures (13 (+1) homes)
 - Destroyed: 258 (+29) structures (138 (+20) homes; 1 multiple residence)
- Mandatory and voluntary evacuations in effect for 21k people
- Shelters / Occupants: 2 / 7 (-10)*



Wildfires – CA (continued)

Impacts:

Holy Fire: Acres burned: 22k (+3k); contained: 36% (+26)

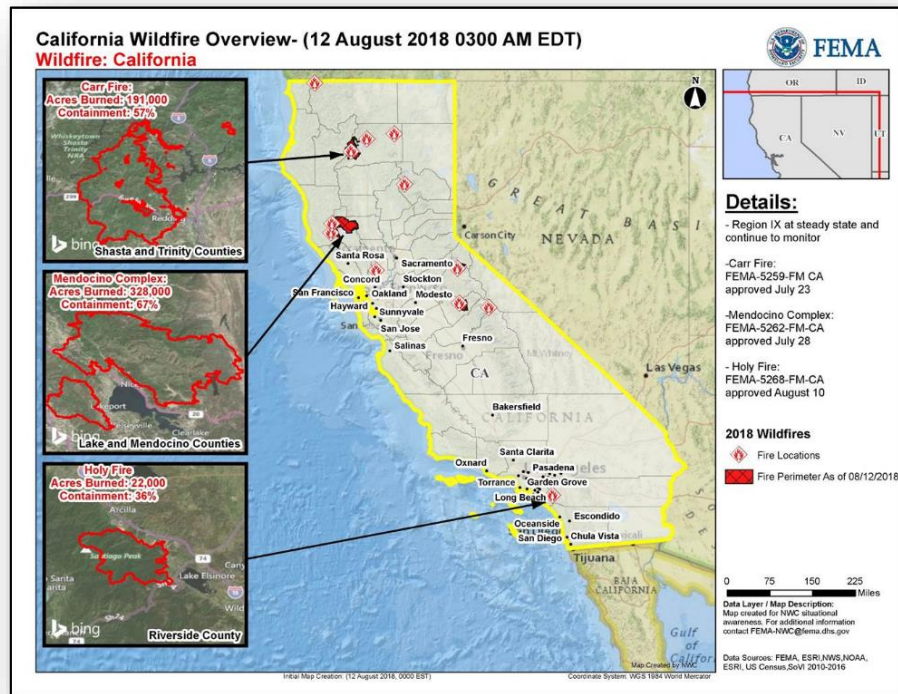
- Fatalities / Injuries: 0 / 6 (+1)
- Structures:
 - Threatened: 5k (-6k) structures (3.7k (-5.8k) homes)
 - \$800M in commercial structures remain threatened
 - Damaged: 6 (+6) homes
 - Destroyed: 14 (+2) homes
- Mandatory evacuations in effect for 11k (-10.5k) people
- Shelters / Occupants: 2 (-1) open / 70 (-34)*

Response:

- Governor declared a State of Emergency; CA EOC at Full Activation
- FEMA Region IX assets deployed to CA EOC:
 - R-IX IMAT-2, Two LNOs & DCO
 - Select ESFs (1, 3, 4, 6, 7, 12)
- Staging Area established with ISB Team, Cache, and commodities
- Bothell MERS deployed
- FEMA Region IX RWC at Steady State, continuing to monitor
- FEMA NWC monitoring and reporting

Declaration Activity

- FEMA-4382-DR-CA for the Carr Fire (*provides IA & PA for Shasta County*)
- FEMA-5259-FM-CA for the Carr Fire
- FEMA-5262-FM-CA for the Mendocino Complex
- FEMA-5268-FM-CA for the Holy Fire



Cougar Creek Fire – WA



FEMA

Fire Name (County)	FMAG Number	Acres Burned	Percent Contained	Evacuations (Residents)	Structures			Fatalities / Injuries
					Threatened	Damaged	Destroyed	
Cougar Creek (Chelan)	XXXX-FM-WA Aug 11, 2018	18,890	5%	Mandatory	300 Homes	0	0	0 / 1

Current Situation

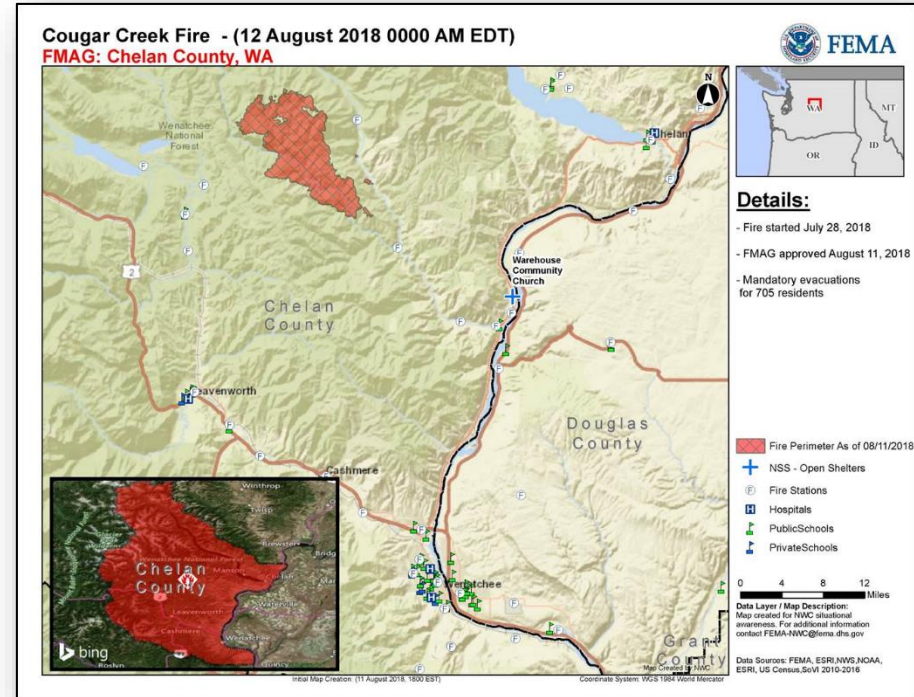
- Fire began July 28 and is threatening communities around the areas of Ardenvoir, Plain, and Entiat Valley, WA (pop. 1,000)
- Mandatory evacuations in effect for 705 people
- Shelters / Occupants: 1 / 2

State Response

- WA EOC at Partial Activation
- The Governor declared a State of Emergency for the entire state on July 31 (wildfire danger)

FEMA Response

- Bothell MOC remains at Steady State
- FMAG approved on Aug 11, 2018
- NWC will monitor and report as warranted



Grass Valley Fire – WA



FEMA

Fire Name (County)	FMAG Number	Acres Burned	Percent Contained	Evacuations (Residents)	Structures			Fatalities / Injuries
					Threatened	Damaged	Destroyed	
Grass Valley (Douglas & Grant)	XXXX-FM-WA Aug 11, 2018	60,000	0%	Mandatory	245 Homes	0	0	0 / 1

Current Situation

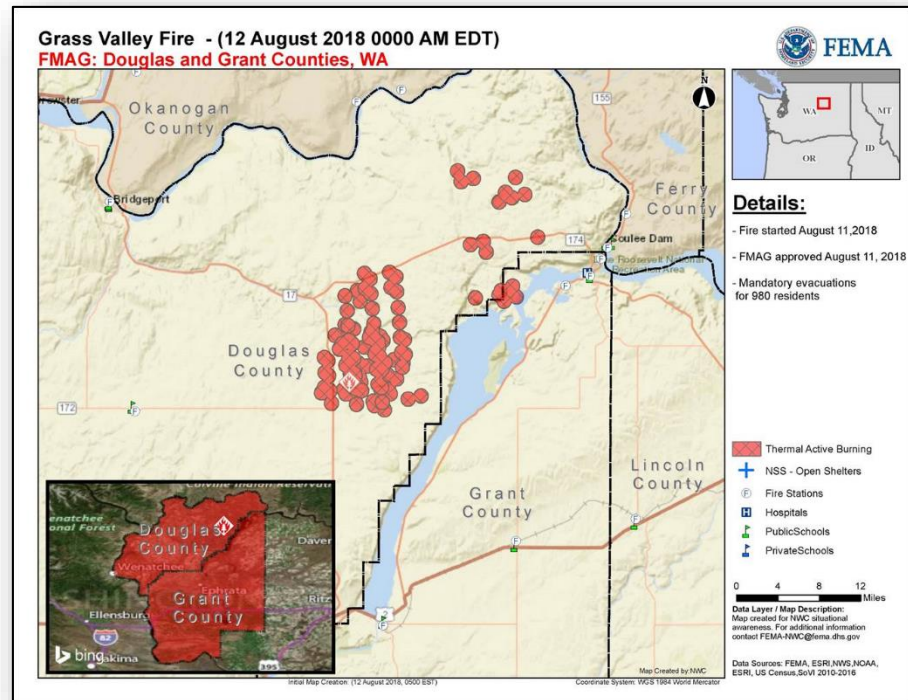
- Fire began August 11, 2018 and is threatening communities around the areas of Grand Coulee, Coulee Dam, & Electric City, WA (pop. 5,448)
- Threatening power utilities, including the Grand Coulee Dam
- Mandatory evacuations in effect for 980 people

State Response

- WA EOC at Partial Activation
- The Governor declared a State of Emergency for the entire state on July 31 (wildfire danger)

FEMA Response

- Bothell MOC remains at Steady State
- FMAG approved on Aug 11, 2018
- NWC will monitor and report as warranted



Wildfire Summary



FEMA

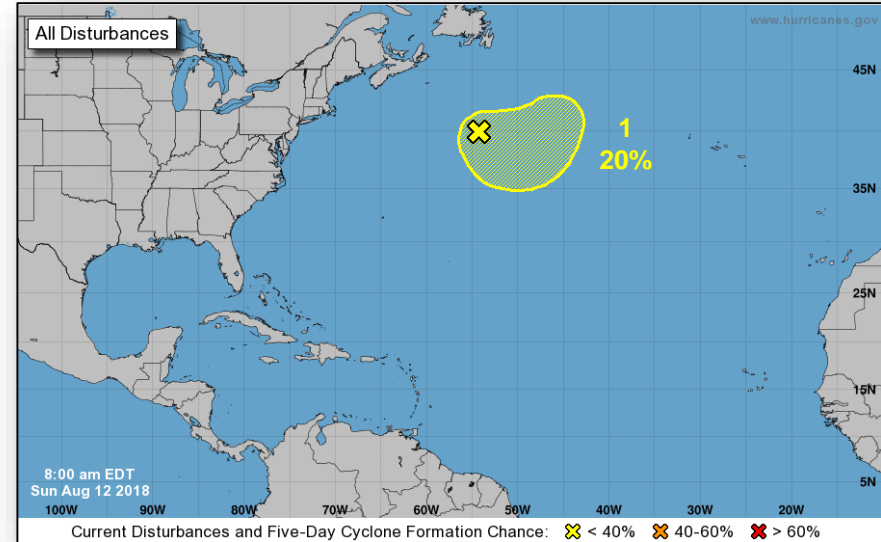
Fire Name (County)	FMAG Number	Acres Burned	Percent Contained	Evacuations (Residents)	Structures			Fatalities / Injuries
					Threatened	Damaged	Destroyed	
Washington (1)								
Hawk (Yakima)	XXXX-FM-WA	700	0%	Mandatory (800)	52 (50 Multiple Residences)	0	3 (1 Home)	0 / 0

Tropical Outlook – Atlantic



Disturbance 1 (as of 8:00 a.m. EDT)

- 500 miles south of Cape Race, Newfoundland
- Could gradually acquire subtropical or tropical characteristics through the middle of the week
- Forecast to form over the central Atlantic in a few days
- Formation chance through 48 hours: Low (10%)
- Formation chance through 5 days: Low (20%)



Tropical Outlook – Eastern Pacific

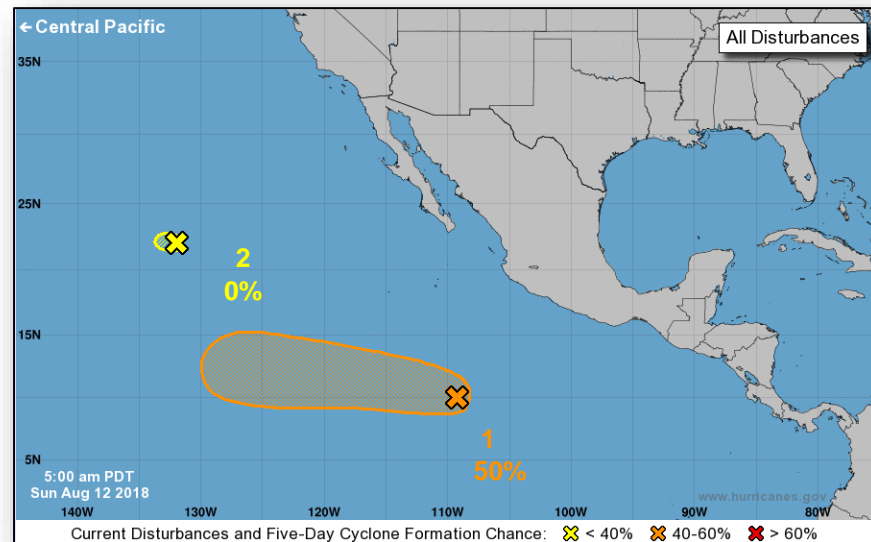


Disturbance 1 (as of 8:00 a.m. EDT)

- 750 miles SSW of Manzanillo, Mexico
- A tropical depression could form by the middle of next week
- Formation chance through 48 hours: Low (20%)
- Formation chance through 5 days: Medium (50%)

Disturbance 2 (as of 8:00 a.m. EDT)

- 1,400 miles W of the Baja California peninsula, Mexico
- Formation chance through 48 hours: Low (near 0%)
- Formation chance through 5 days: Low (near 0%)



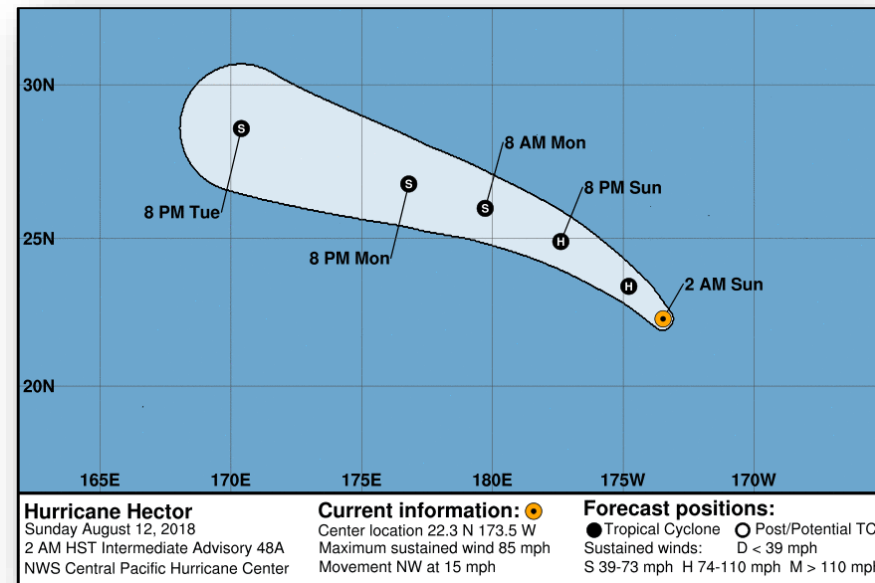
Tropical Outlook – Central Pacific



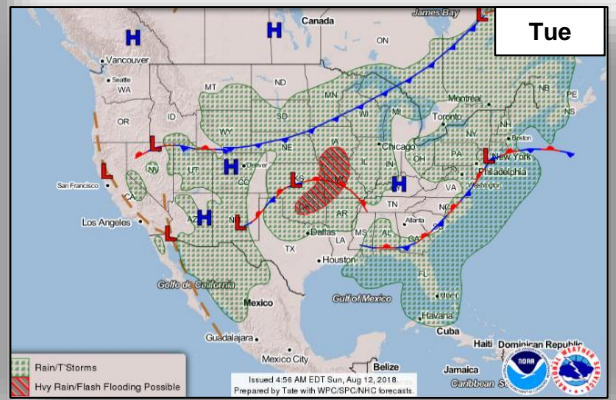
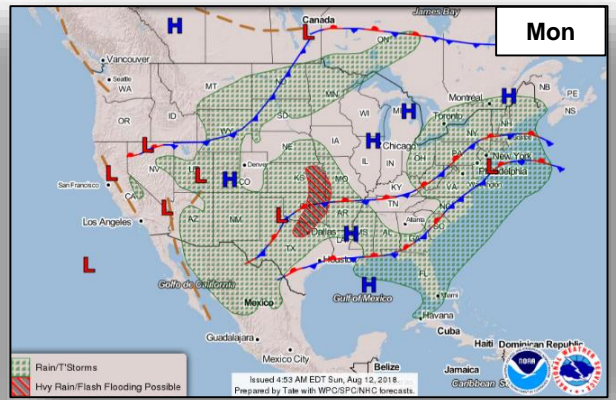
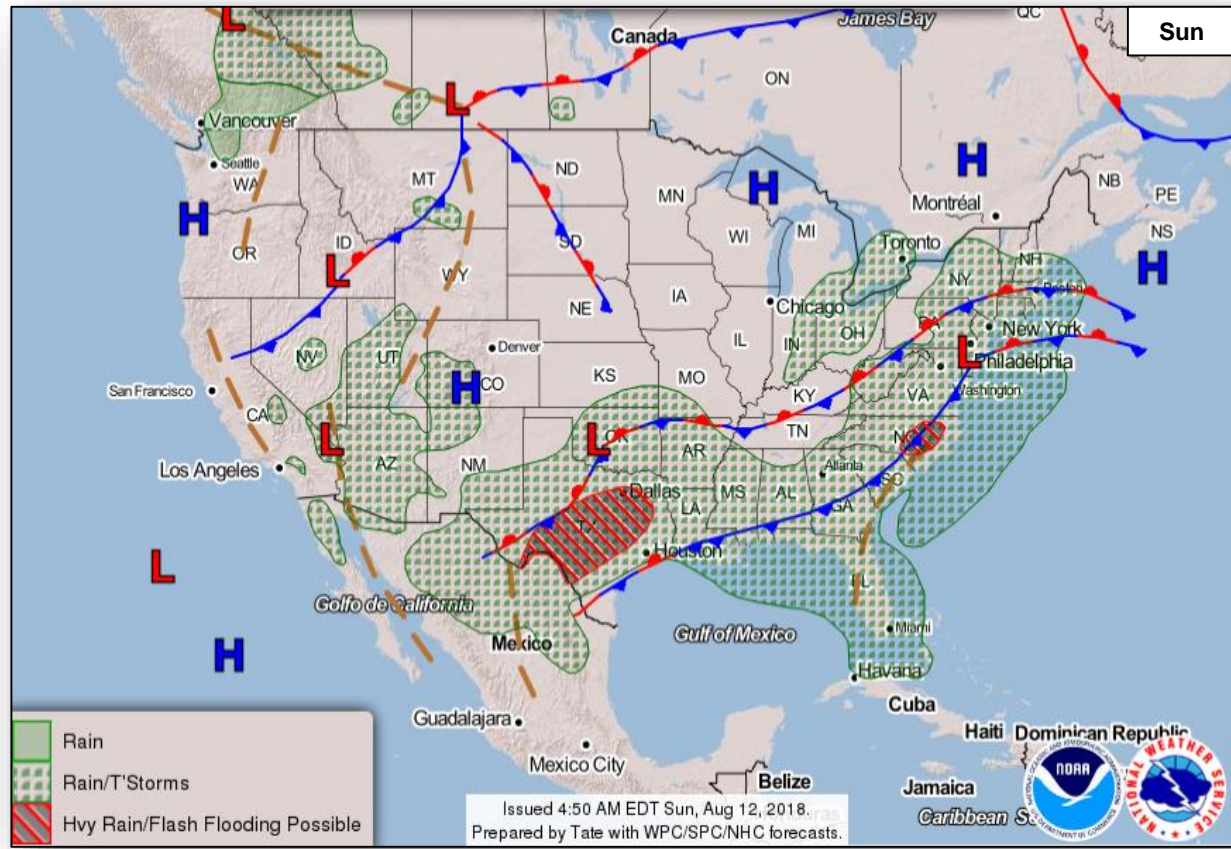
FEMA

Hurricane Hector (CAT 1): (Advisory #48A as of 8:00 a.m. EDT)

- 330 miles SE of Midway Island
- Moving NW at 15 mph
- Maximum sustained winds 85 mph



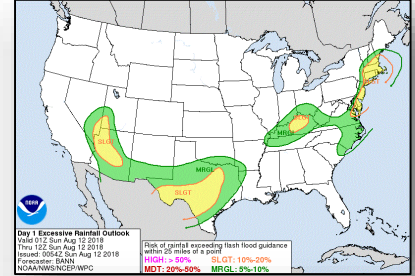
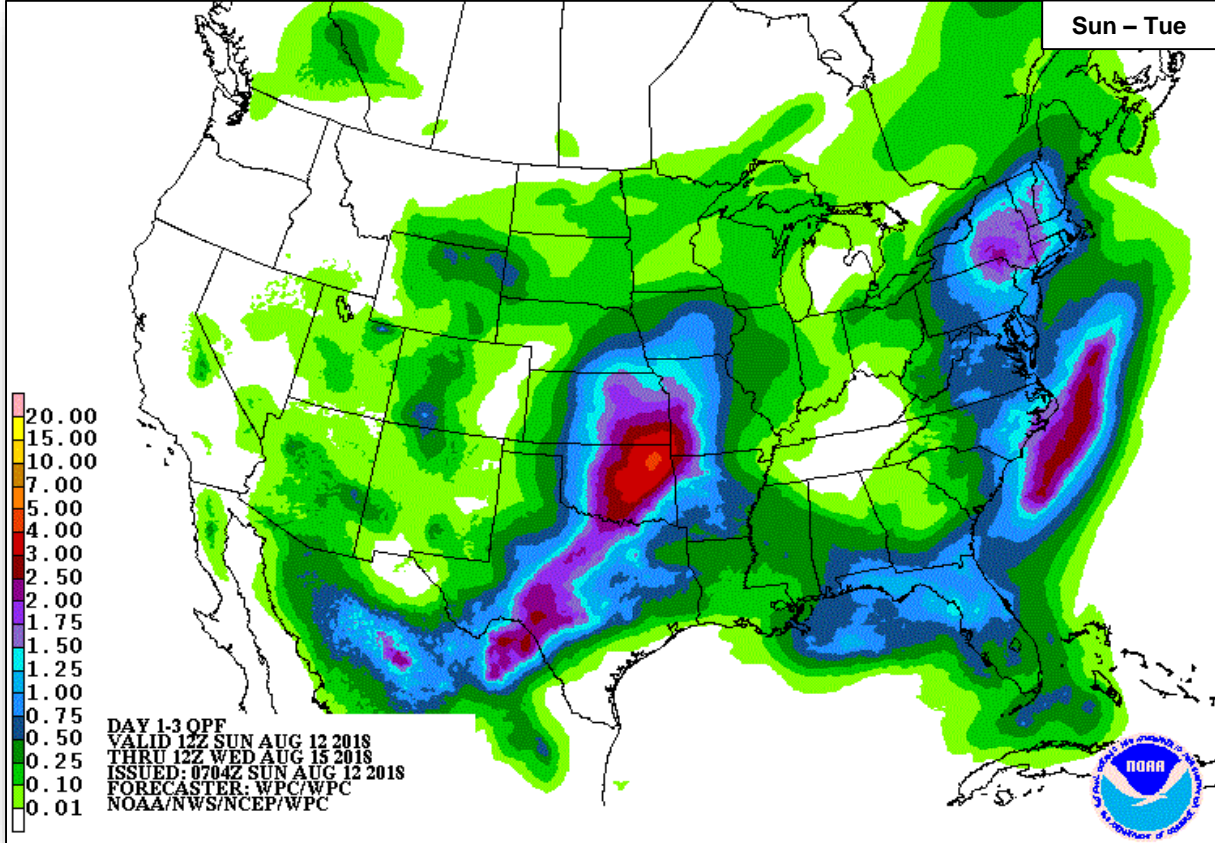
National Weather Forecast



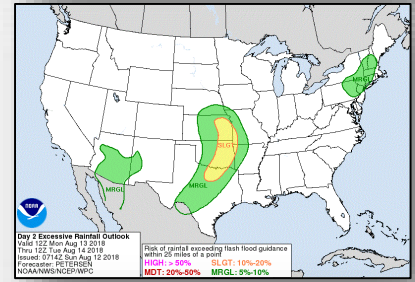
Precipitation / Excessive Rainfall Forecast



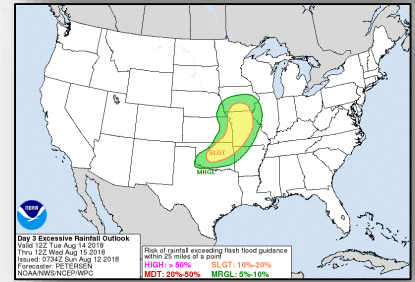
FEMA



Sun



Mon

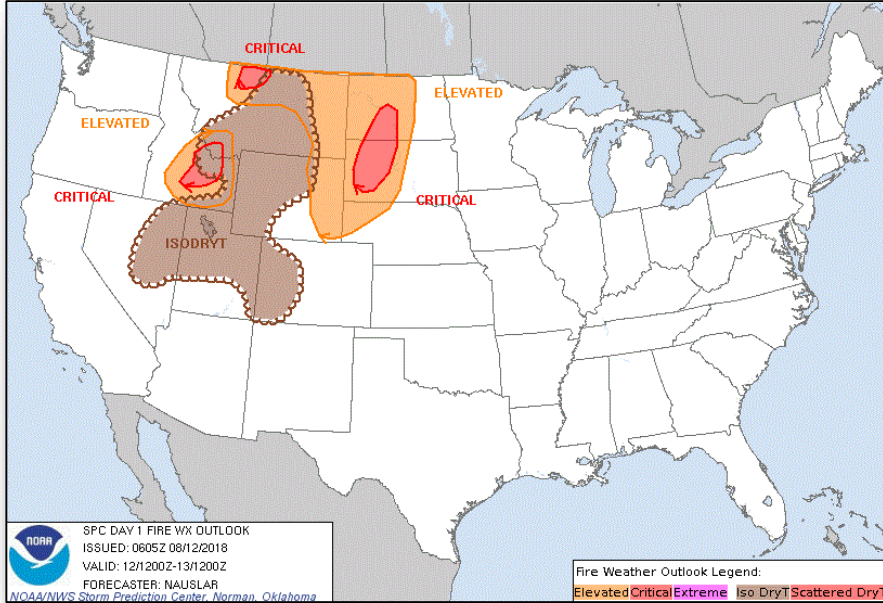


Tue

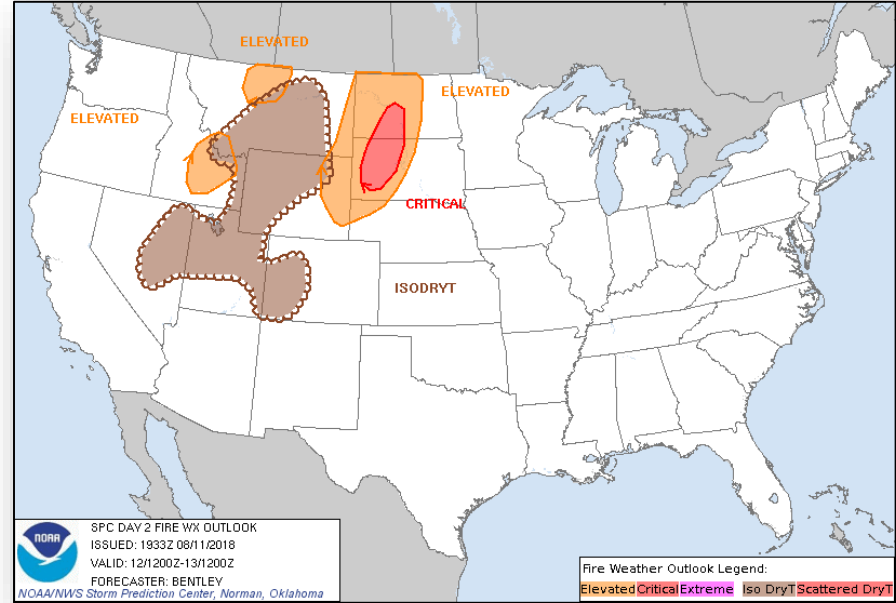
Fire Weather Outlook



FEMA



Sunday

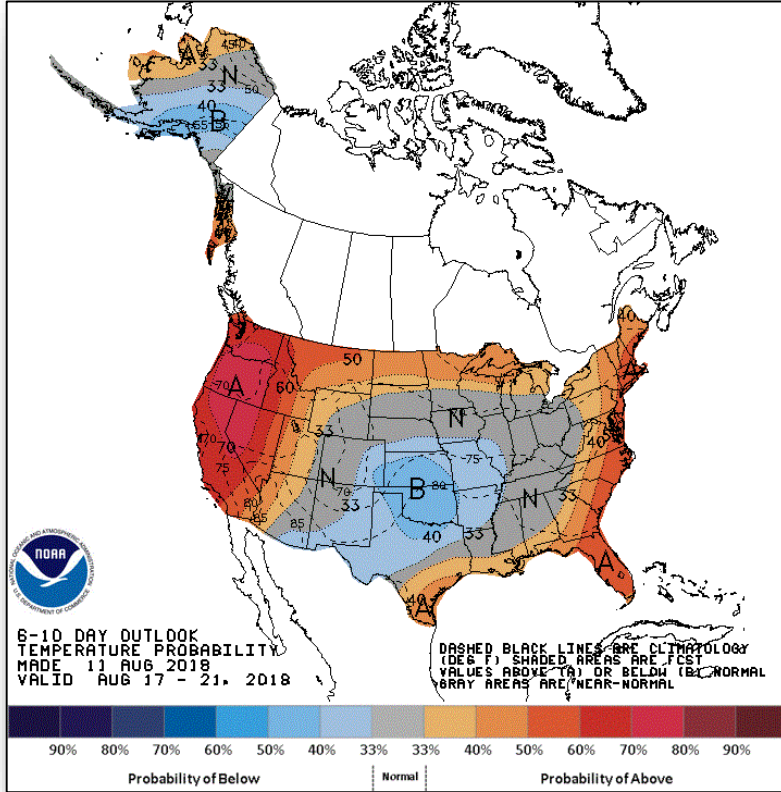


Monday

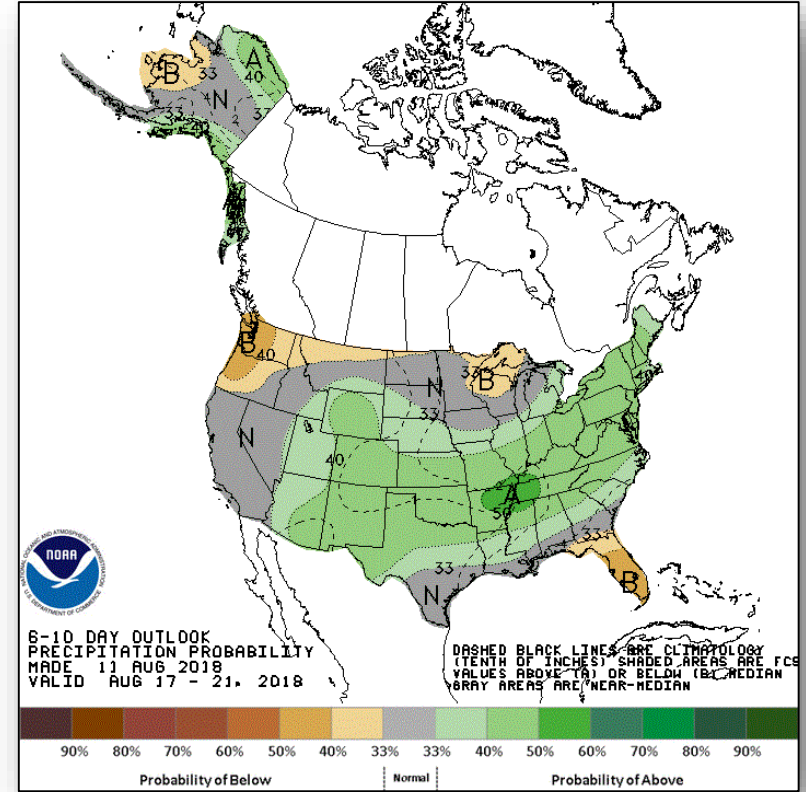
Long Range Outlooks – August 17-21



FEMA



6 - 10 Day Temperature Probability



6 - 10 Day Precipitation Probability

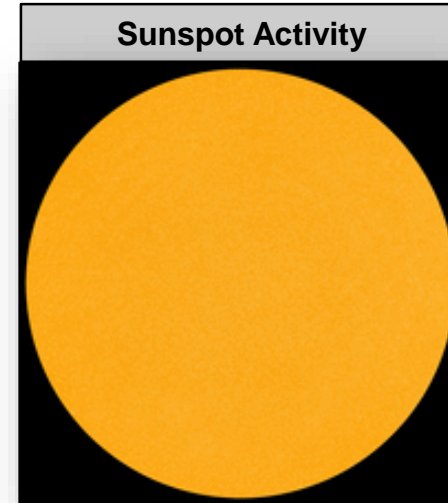
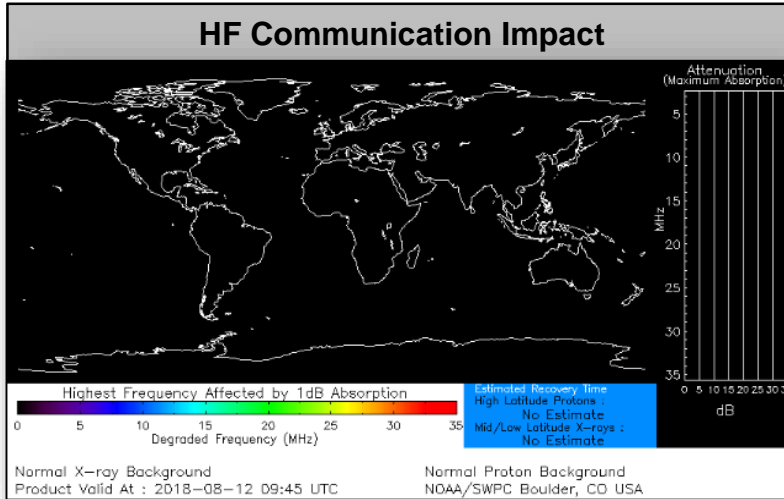
Space Weather



FEMA

	Space Weather Activity	Geomagnetic Storms	Solar Radiation	Radio Blackouts
Past 24 Hours	None	None	None	None
Next 24 Hours	None	None	None	None

For further information on NOAA Space Weather Scales refer to: <http://www.swpc.noaa.gov/noaa-scales-explanation>



Joint Preliminary Damage Assessments



FEMA

Region	State / Location	Event	IA / PA	Number of Counties		Start – End
				Requested	Completed	
V	MN	Flooding June 15 – July 12, 2018	IA	10	0	8/13 – TBD
			PA	0	0	N/A
VII	IA	Severe Storms and Tornado July 19, 2018	IA	2	0	8/13 – TBD
			PA	5	5	8/7 – 8/9

Disaster Requests & Declarations



FEMA

Declaration Requests in Process					Requests APPROVED (since last report)	Requests DENIED (since last report)
11	IA	PA	HM	Date Requested	1	0
SD – DR Severe Storms and Flooding		X	X	June 14, 2018		
MT – DR Flooding		X	X	June 18, 2018		
LA – DR Flooding		X	X	June 29, 2018		
AK – DR Flooding		X	X	June 28, 2018		
CT – DR Severe Storm, Tornado & Straight-line Winds	X	X	X	July 9, 2018		
WI – DR Severe Storms, Straight-line Winds & Flooding		X	X	July 20, 2018	Declared August 10, 2018	
Confederated Tribes of Colville Reservation – DR Flooding		X	X	July 27, 2018		
NC – DR Severe Storms, Flooding, Landslides & Mudslides	X	X	X	July 30, 2018		
IA – DR Severe Storms, Tornadoes, Straight-line Winds & Flooding	X	X	X	August 1, 2018		
MN (+3 Tribes)* – DR Severe Storms, Tornadoes, Straight-line Winds & Flooding		X	X	August 7, 2018		
Havasupai Reservation (AZ) – DR Severe Storms, Flooding, & Landslides		X	X	August 8, 2018		
NE – DR Severe Storms, Tornadoes, Straight-line Winds & Flooding		X	X	August 8, 2018		

*Leech Lake Band of Ojibwe, Red Lake Nation, and White Earth Nation

Readiness – Deployable Teams and Assets



FEMA

Resource	Force Strength	Available	Deployed	Other	Cadres with 25% or Less Availability
IM Workforce	11,694 ▼	4,128 ▼ 35%	4,055 ▼	3,511	EHP 10% (39/380); HM 24% (226/949); OPS 24% (59/250); PA 10% (190/1,826); SAF 23% (12/53); SEC 19% (19/101)
National IMATs* (3 Teams)	East 1: East 2: West:	B-2 Charlie B-48			
Regional IMATs (4 - 6 Teams)	Assigned: Available: PMC / NMC: Deployed:	13 5 4 4			
US&R (≥ 66%)	Assigned: Available: PMC / NMC: Deployed:	28 28 0 0			
MERS (≥ 66%)	Assigned: Available: PMC / NMC: Deployed:	36 33 0 3			
FCO (≤ 1 Type I)	Assigned: Available: PMC / NMC: Deployed:	33 13 1 19			
FDRC (≥ 3)	Assigned: Available: PMC / NMC: Deployed:	14 6 1 7			

* **B-2 Status:** Assemble ≤ 2-hrs, On Site ≤ 18-hrs; **B-48 Status:** Assemble and deploy ≤ 48hrs; **Charlie Status:** No team assemble time requirement

FEMA Readiness – Activation Teams



FEMA

Status		Activated Team	Activation Level	Activation Times	Reason / Comments
NWC (5 Teams)	Steady State			Sunday, August 12 (Day and night shift)	Relocated to Mt. Weather
NRCC (2 Teams)	Available				
HLT (1 Team)	Activated				
RWC / MOCs (10 Regions)	Steady State				
RRCCs (10 Regions)	Available				

Backup Regions: IV, VIII, & V



FEMA

FEMA's mission is helping people before, during, and after disasters.