

The Disaster Center is dedicated to the idea that disaster mitigation is cost effective and individuals pursuing their own interest are the greatest potential force for disaster reduction.

Please consider making a small donation to the Disaster Center



When disaster mitigation is cost effective, we are on the road to bringing disasters to an end.



FEMA

Daily Operations Briefing

Wednesday, August 15, 2018
8:30 a.m. EDT

Significant Activity – Aug 14-15



FEMA

Significant Events: Western Wildfires

Tropical Activity:

- Atlantic – Subtropical Depression Five
- Eastern Pacific – Tropical Depression Fourteen-E
- Central Pacific – Disturbance 1: Low (20%)
- Western Pacific – Invest 99W: High

Significant Weather:

- Severe thunderstorms possible – Central/Northern Plains
- Flash flooding possible – Central/Southern Plains; Southern Plains to Ohio Valley
- Elevated fire weather – ID, UT, WY & CO
- Isolated dry thunderstorms – Central Great Basin to Northern Intermountain
- Red Flag Warnings – CA, NV, OR & ID

Declaration Activity: None

Wildfire Summary



FEMA

Fire Name (County)	FMAG Number	Acres Burned	Percent Contained	Evacuations (Residents)	Structures			Fatalities / Injuries
					Threatened	Damaged	Destroyed	
California (3)								
Carr (Shasta/Trinity)	4382-DR-CA	211,019 (+4,203)	65% (+2%)	Mandatory (84)	44 (-69) (42 homes)	282 (193 homes)	1,599 (1,077 homes)	7 / 1
Mendocino Complex (Mendocino/Lake)	5262-FM-CA	354,910 (+10,020)	64% (-4%)	Mandatory (29,988)	1,025 (1,000 homes)	36 (13 homes)	265 (147 homes)	1 / 2
Holy Fire (Riverside)	5268-FM-CA	22,986	65% (+5%)	Mandatory (500)	1,210 (1,060 homes)	18 (10 homes)	24 (18 homes)	0 / 7 (+1)
Washington (3)								
Cougar Creek (Chelan)	5270-FM-WA	31,608 (+1,885)	10% (+5%)	Mandatory (705)	300 homes	0	0	0 / 2 (+1)
Grass Valley (Douglas & Grant) FINAL	5271-FM-WA	75,573 (+738)	87% (+47)	Voluntary (100)	300 (150 homes)	1 home	20 (0 homes)	0 / 1
Boyds (Ferry)	5273-FM-WA	2,950 (-50)	0%	Mandatory (210)	381 (+71) (380 homes)	0	4 (+4) (3 homes)	0 / 1 (+1)
South Dakota (1)								
Vineyard (Fall River) FINAL	5272-FM-SD	560	55% (+15)	Lifted	0 (-180)	0	1 (0 homes)	0 / 2 (+2)

FMAG Requests and Declarations



FEMA

Action (since last report)		Total	FMAG No. and State		
Requests DENIED		0			
Requests APPROVED		1	FEMA-5273-FM; Washington		
Approved FMAG Data					
Fiscal Year	Current FYTD	MTD	Monthly Average*	Cumulative Acres Burned FYTD	Cumulative Denied FMAGs FYTD
2018	59	9 (+1)	11.3	817,838 (+3,000)	7
Fiscal Year	Total Previous FY	Yearly Average**		Total Acres Burned Previous Fiscal Year	Total Denied FMAGs Previous Fiscal Year
2017	60	37.7		870,016	16

* Reflects the three year average for current month

** Reflects three year total average

Kīlauea Eruption – Hawai'i County, HI



FEMA

The Kilauea Volcano has remained quiet for over a week

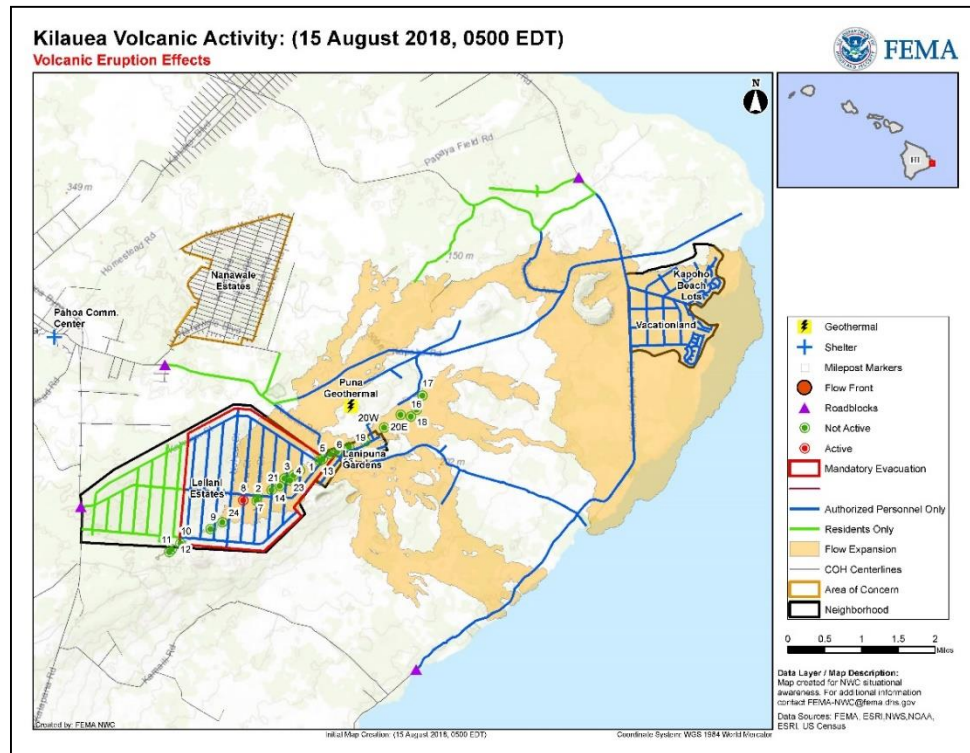
No lava is flowing in the lower East Rift Zone (LERZ) with the exception of a small, crusted-over pond of lava deep inside the fissure 8 cone and a few scattered ocean entries

It is too soon to tell if this change represents a temporary lull or the end of the LERZ eruption and/or summit collapse activity

Despite the eruptive pause, hazardous conditions remain in the LERZ and at the summit including:

- Fissure 8 still houses a small amount of magma, with the possibility of sending lava in new directions
- The new lava flow field is subject to collapse
- High levels of SO₂ persist in some areas
- Tephra (Fragments of glassy lava) have accumulated that breaks down to small irritant particles that can be windborne
- Additional rock falls can occur near the summit
- Strong aftershocks may continue for months

For current information see: [*HVO Status Report*](#)

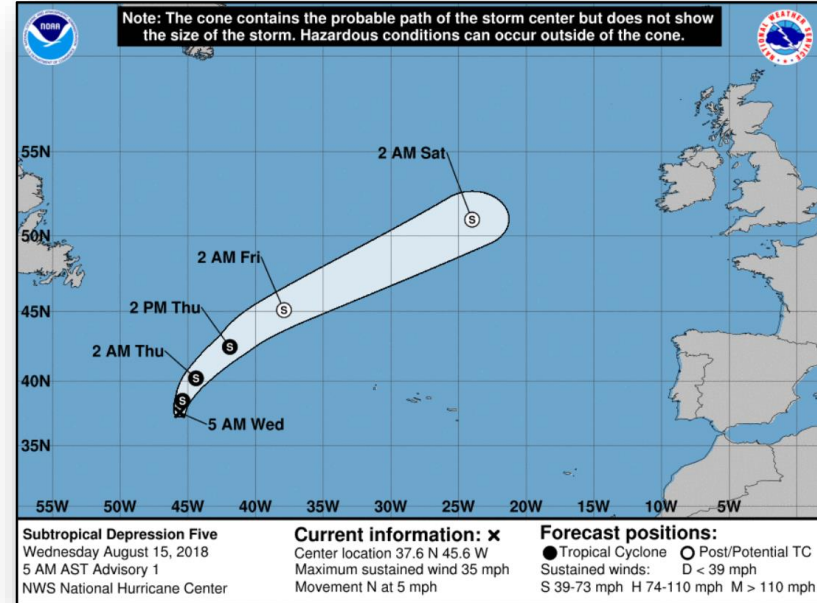


Tropical Outlook – Atlantic



Subtropical Depression Five (Advisory #1 as of 5:00 a.m. EDT)

- Located 1,015 miles W of the Azores
- Moving N at 5 mph
- Maximum sustained winds 35 mph
- Expected to become a subtropical storm later today

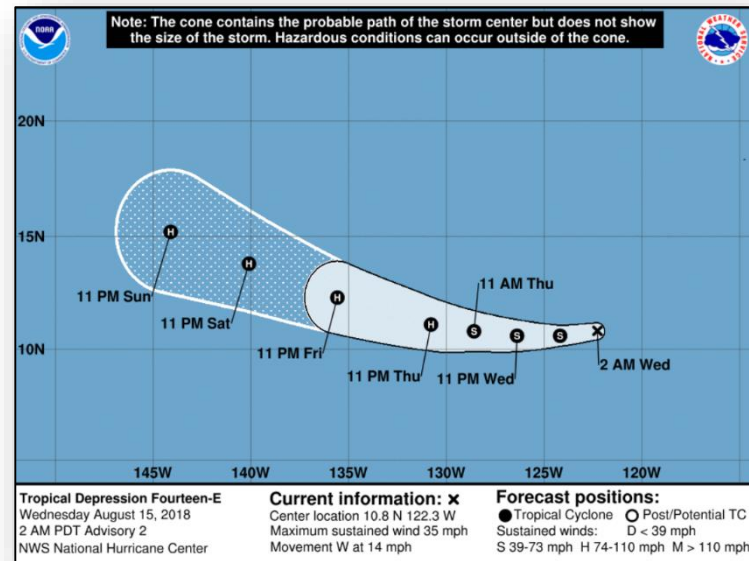


Tropical Outlook – Eastern Pacific



Tropical Depression Fourteen-E (Advisory #2 as of 5:00 a.m. EDT)

- Located 1,170 miles SW of the southern tip of Baja California peninsula
- Moving W at 14 mph
- Maximum sustained winds 35 mph
- Expected to become a tropical storm later today and a hurricane by late Thursday or Friday



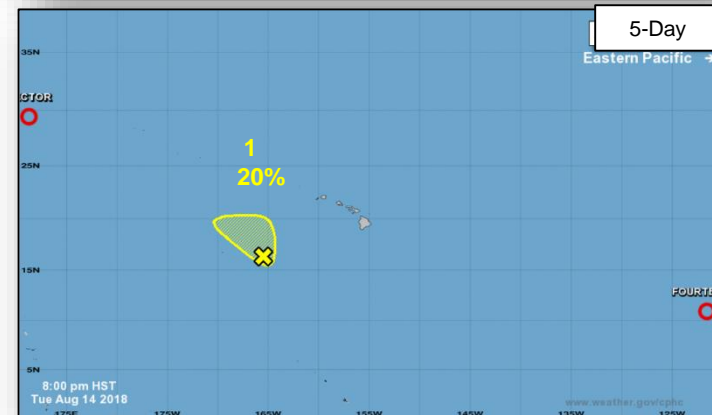
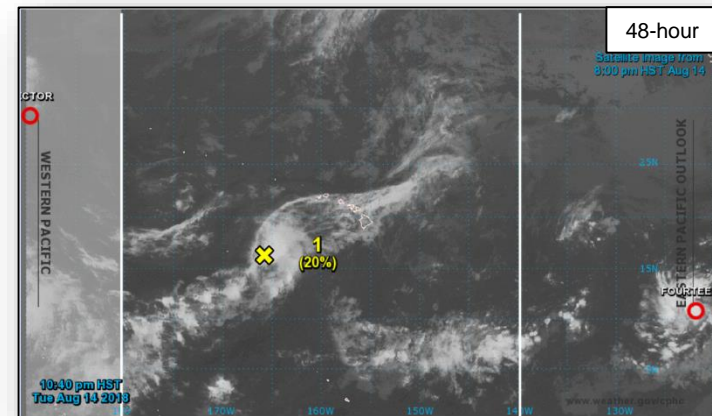
Tropical Outlook – Central Pacific



FEMA

Disturbance 1 (as of 2:00 a.m. EDT)

- Located 560 miles SW of Lihue, Hawaii
- Moving NW
- Upper level winds are expected to inhibit any significant development over the next few days
- Formation chance through 48 hours: Low (20%)
- Formation chance through 5 days: Low (20%)



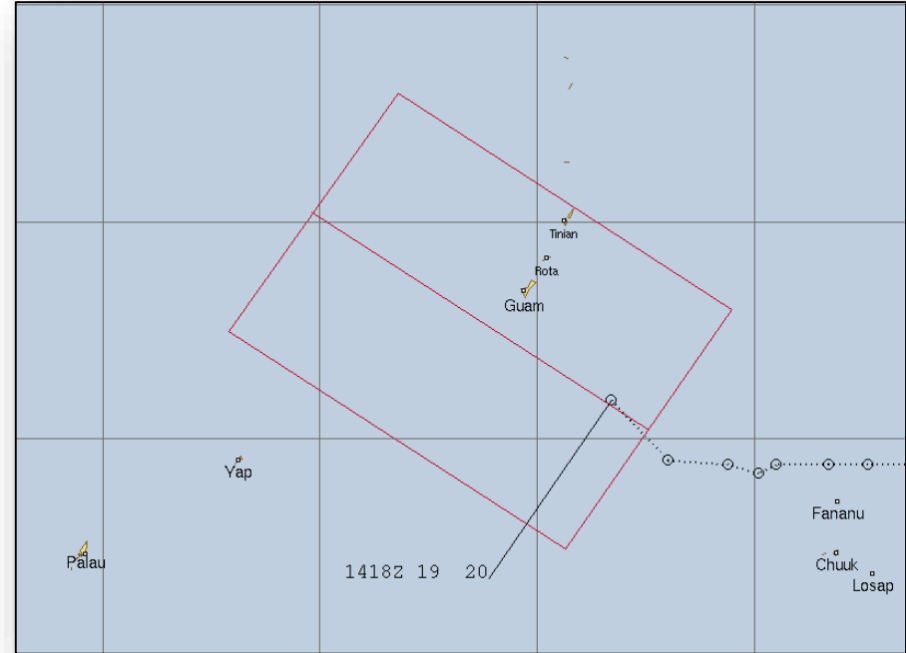
Tropical Outlook – Western Pacific



FEMA

Invest 99W (as of 2:00 a.m. EDT)

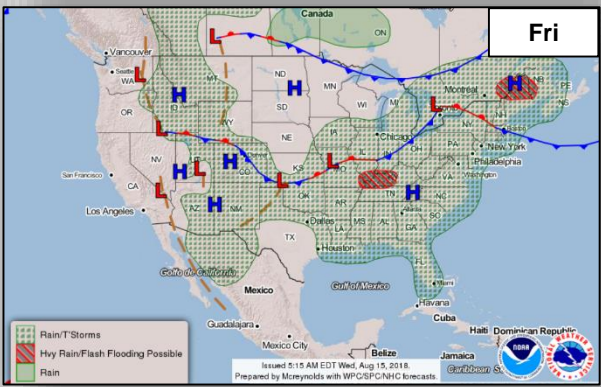
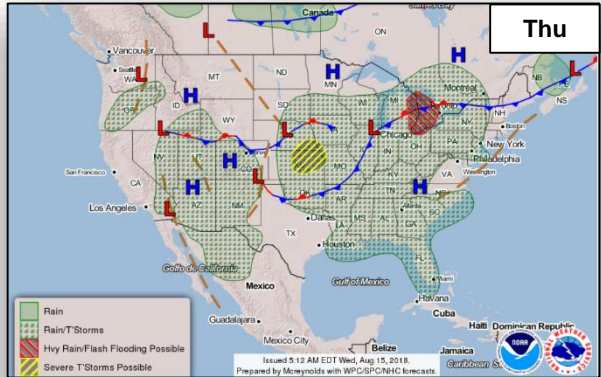
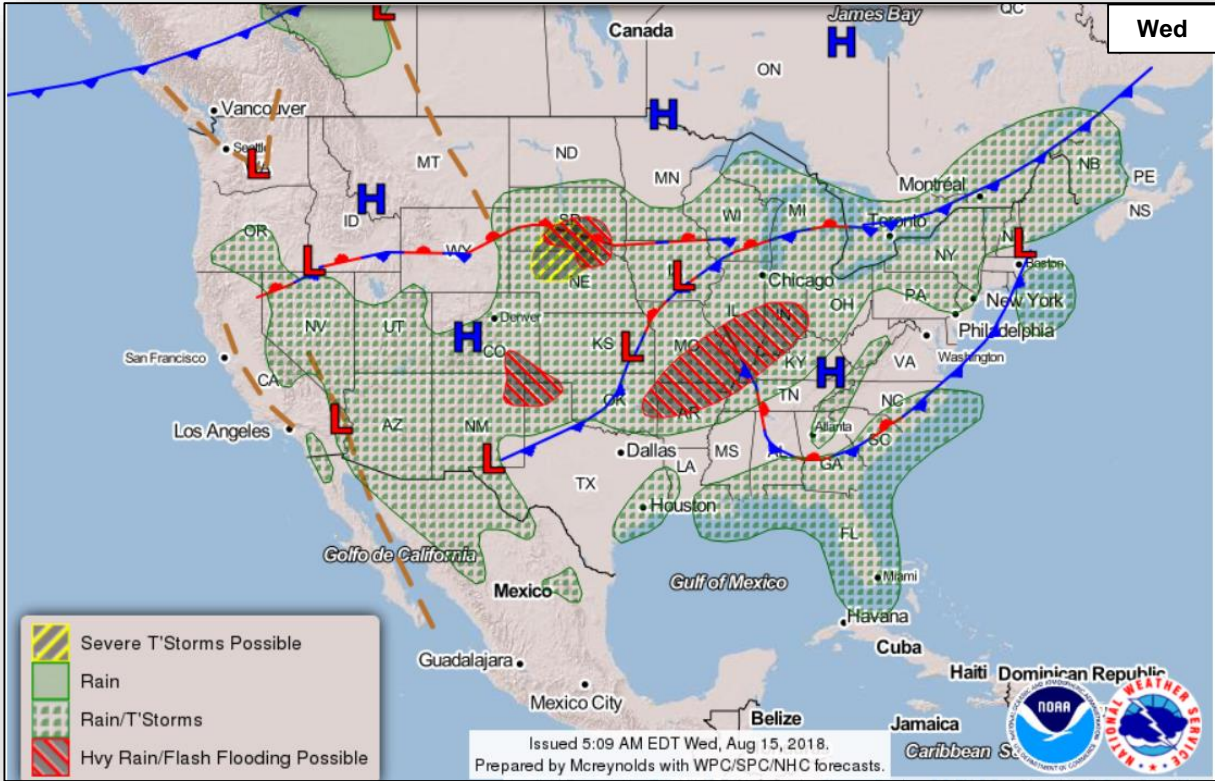
- Located 161 miles SSE of Andersen AFB, Guam
- Moving generally W
- Maximum sustained winds 21-28 mph
- Formation chance through 24 hours: High



National Weather Forecast



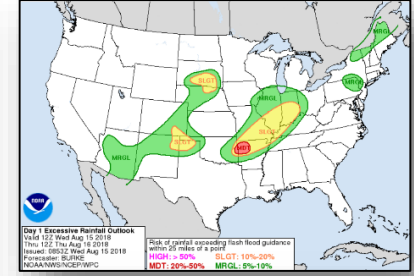
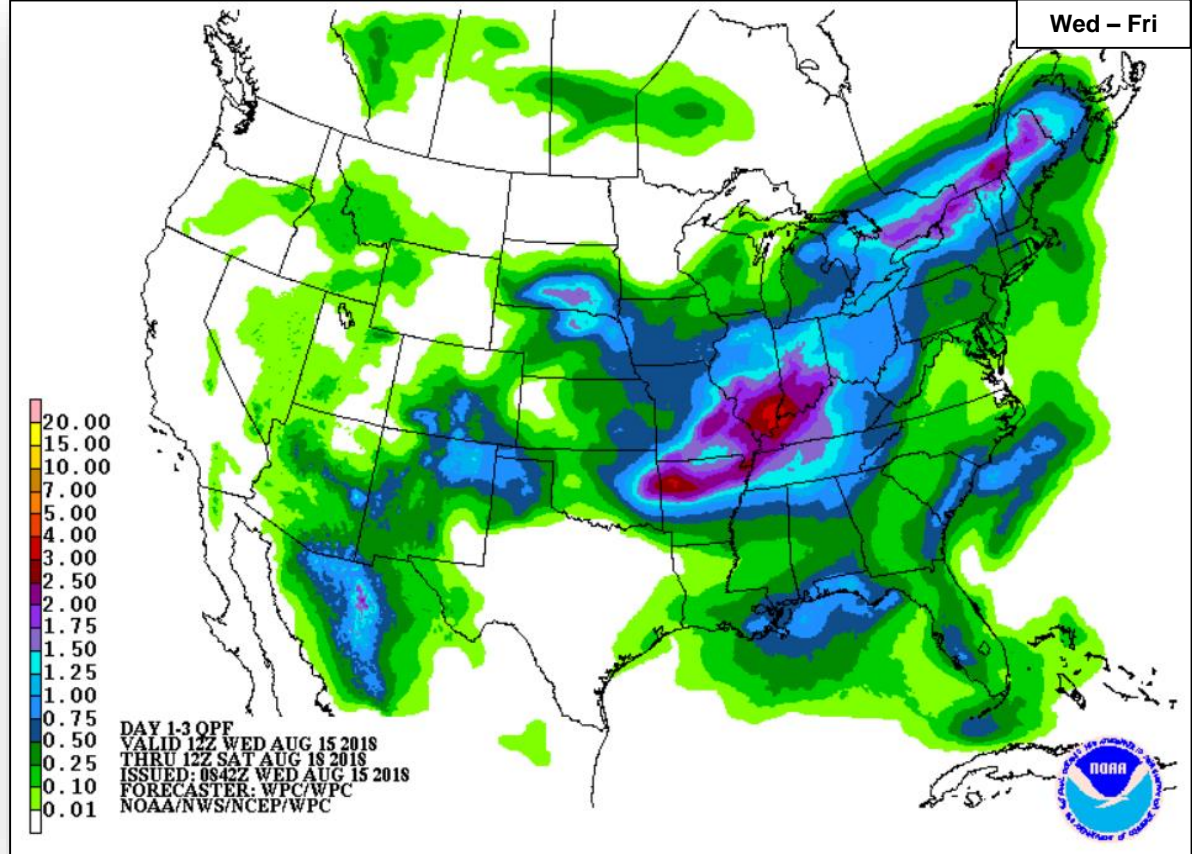
FEMA



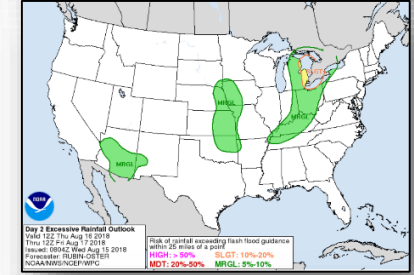
Precipitation / Excessive Rainfall Forecast



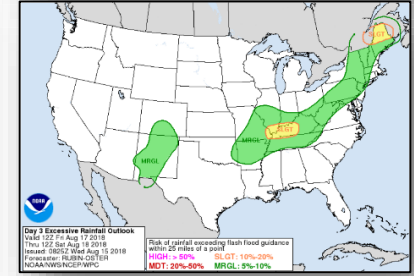
FEMA



Wed



Thu

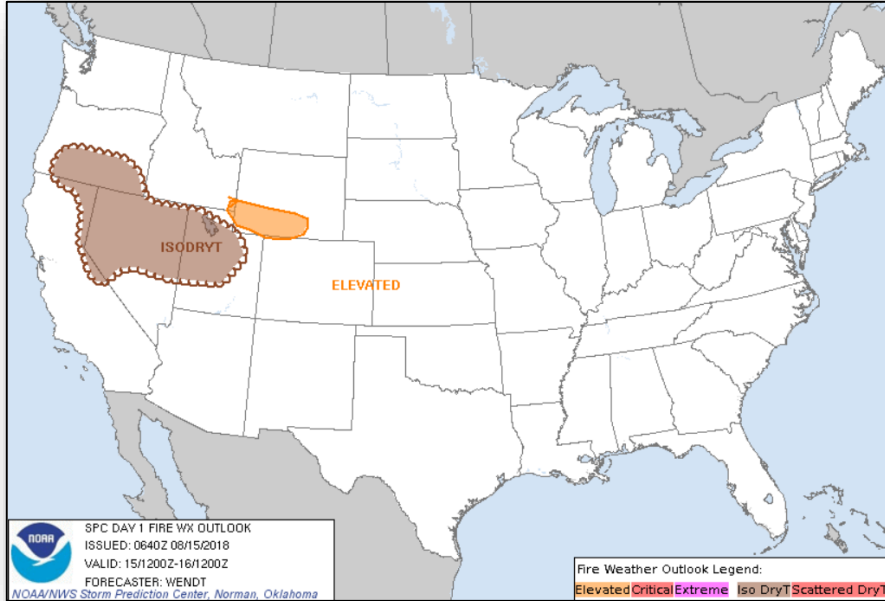


Fri

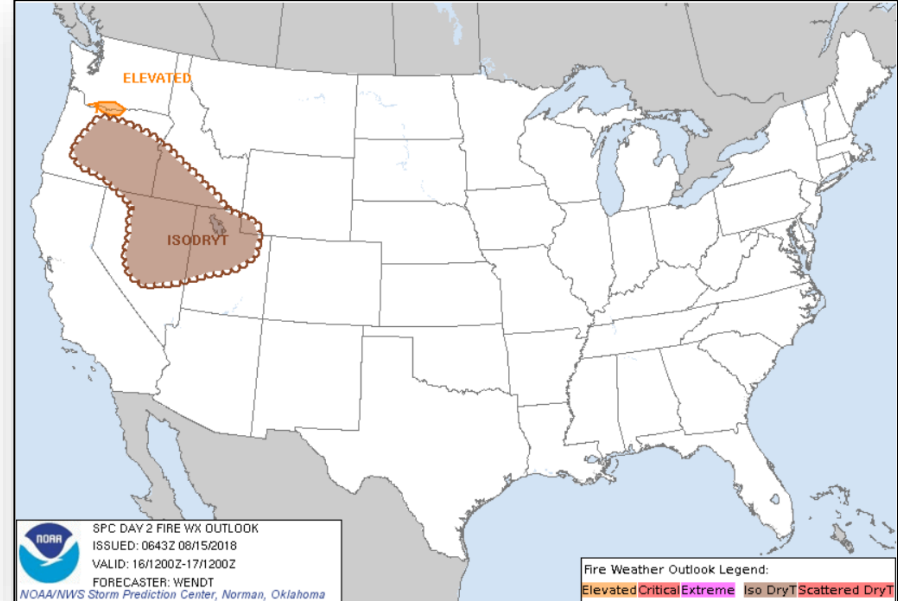
Fire Weather Outlook



FEMA



Wednesday

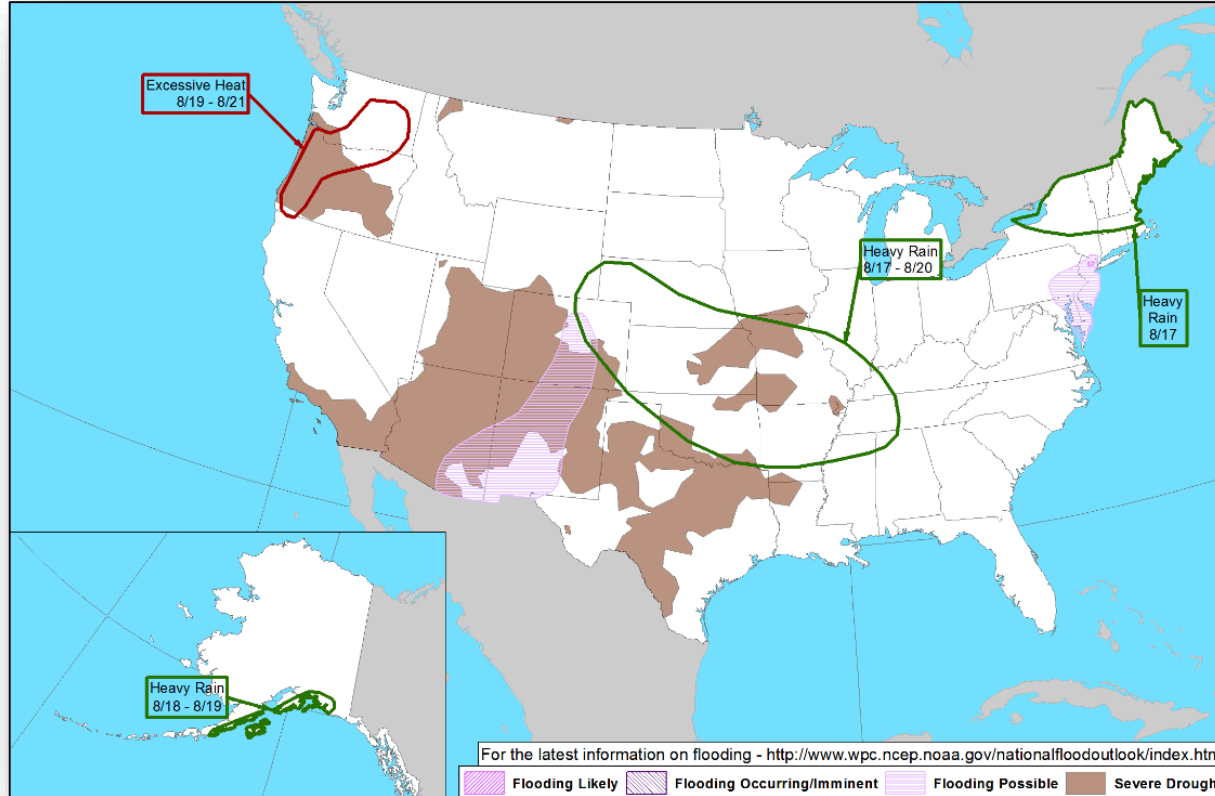


Thursday

Hazards Outlook – Aug 17-21



FEMA



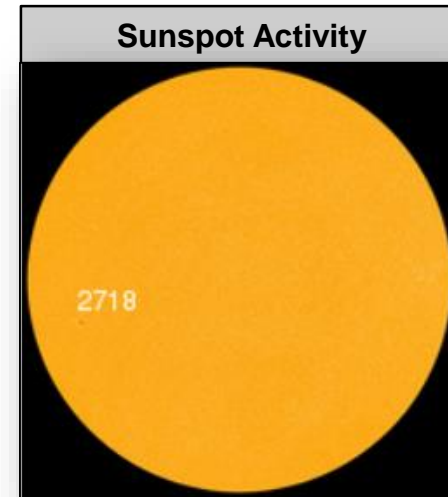
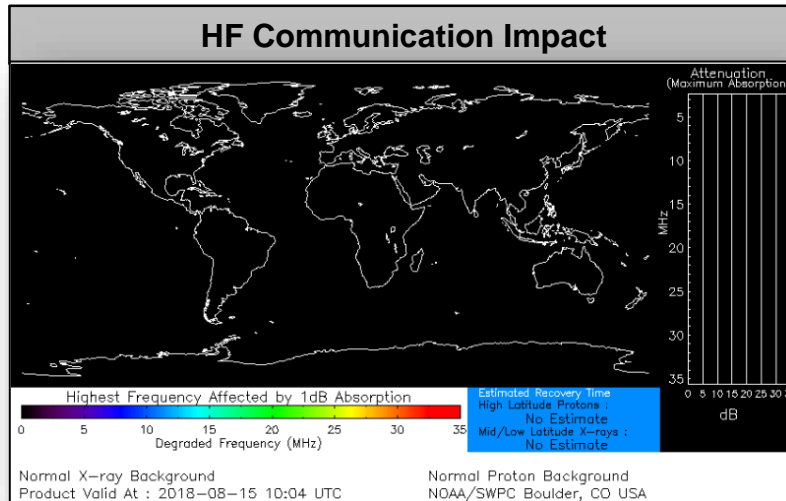
Space Weather



FEMA

	Space Weather Activity	Geomagnetic Storms	Solar Radiation	Radio Blackouts
Past 24 Hours	None	None	None	None
Next 24 Hours	None	None	None	None

For further information on NOAA Space Weather Scales refer to: <http://www.swpc.noaa.gov/noaa-scales-explanation>



Joint Preliminary Damage Assessments



FEMA

Region	State / Location	Event	IA / PA	Number of Counties		Start – End
				Requested	Completed	
VII	IA	Severe Storms and Tornado July 19, 2018	IA	2	0	8/13 – TBD
			PA	5	5	8/7 – 8/9

Disaster Requests & Declarations



FEMA

Declaration Requests in Process					Requests APPROVED (since last report)	Requests DENIED (since last report)
11	IA	PA	HM	Date Requested	0	0
SD – DR Severe Storms and Flooding		X	X	June 14, 2018		
MT – DR Flooding		X	X	June 18, 2018		
AK – DR Flooding		X	X	June 28, 2018		
LA – DR Flooding		X	X	June 29, 2018		
CT – DR Severe Storm, Tornado, & Straight-line Winds	X	X	X	July 9, 2018		
Confederated Tribes of Colville Reservation – DR Flooding		X	X	July 27, 2018		
NC – DR Severe Storms, Flooding, Landslides, & Mudslides	X	X	X	July 30, 2018		
IA – DR Severe Storms, Tornadoes, Straight-line Winds, & Flooding	X	X	X	August 1, 2018		
MN (+3 Tribes)* – DR Severe Storms, Tornadoes, Straight-line Winds & Flooding		X	X	August 7, 2018		
Havasupai Tribe (AZ) – DR Severe Storms, Flooding, & Landslides		X	X	August 8, 2018		
NE – DR Severe Storms, Tornadoes, Straight-line Winds, & Flooding		X	X	August 8, 2018		

**Leech Lake Band of Ojibwe, Red Lake Nation, and White Earth Nation*

FEMA Readiness – Activation Teams



Status		Activated Team	Activation Level	Activation Times	Reason / Comments
NWC (5 Teams)	Steady State				
NRCC (2 Teams)	Available				
HLT (1 Team)	Activated				
RWC / MOCs (10 Regions)	Steady State				
RRCCs (10 Regions)	Available				

Backup Regions: IV, V, & VIII



FEMA

FEMA's mission is helping people before, during, and after disasters.