



FEMA

Daily Operations Briefing

Thursday, November 21, 2013

8:30 a.m. EST

Significant Activity: Nov 20 – 21



Significant Events: Severe weather recovery

Tropical Activity:

- Atlantic – Tropical Storm Melissa
- Eastern Pacific – Tropical cyclone activity not expected next 48 hours
- Central Pacific – No tropical cyclones expected through Friday night
- Western Pacific – No activity threatening U.S. territories

Significant Weather:

- Much below normal temperatures – Great Plains to Ohio Valley
- Snow – Central Great Basin/Central Plains to Upper Mississippi Valley
- Heavy snow – High elevations of Great Basin and Central Plains
- Rain and snow – Southwest to Central Plains and Great Lakes
- Rain and thunderstorms – Southern Plains to Middle Mississippi and Tennessee valleys
- Critical Fire Weather Areas/Red Flag Warnings: None
- Space Weather: Past 24 hours – minor/R1 radio blackouts occurred; next 24 hours - none

Earthquake Activity: None

Declaration Activity: Amendment No. 1 to FEMA-4148-DR-NM

Severe Weather Outbreak – Nov 17-18

FEMA Region V

- RRCC activated to Level III; RWC remains at Watch/Steady State
- IMAT and LNO deployed to IL
- Joint PDAs for 13 counties in IL (IA to begin Nov 21 and PA to begin Dec 2)
- Region-wide data:
 - Fatalities: 8 (confirmed); Injured: 43 unconfirmed (open source: 150-200)
 - Power outages: 41,319 (peak 753,352)
 - 10 shelters open with 37 occupants

• Illinois

- SEOC at Level III (Limited Staffing)
- Governor declared state of disaster for 15 (+2) counties
- 6 confirmed fatalities; 37 unconfirmed injuries (open source reporting 150-200)
- 2,532 customers remain without power; full restoration expected today
- 856 homes damaged (open source); assessments ongoing
- 3 shelters open with 12 occupants

• Michigan

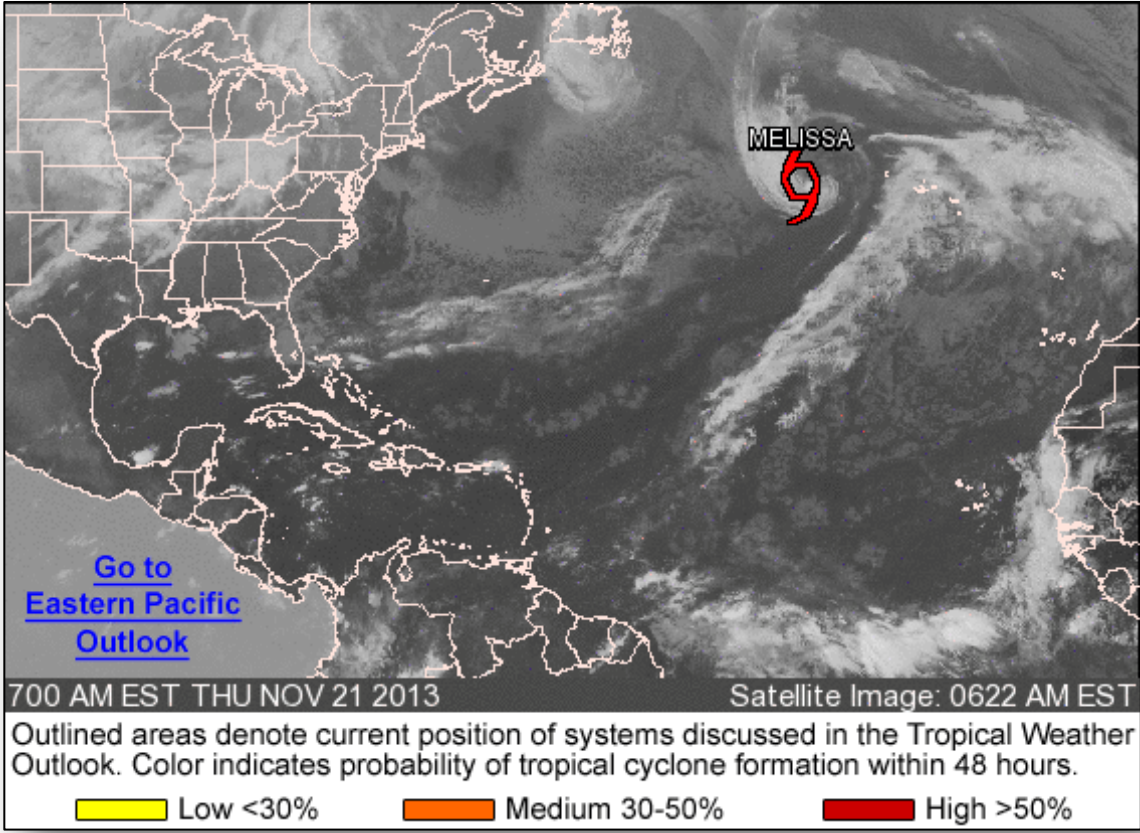
- SEOC at Normal Operations
- 2 confirmed fatalities
- 37,990 customers remain without power; full restoration by Sat
- 4 shelters open with 5 occupants



Atlantic – Tropical Outlook



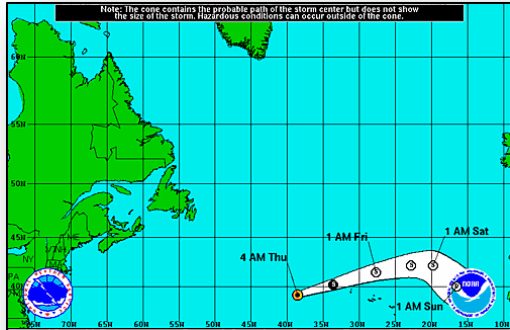
FEMA



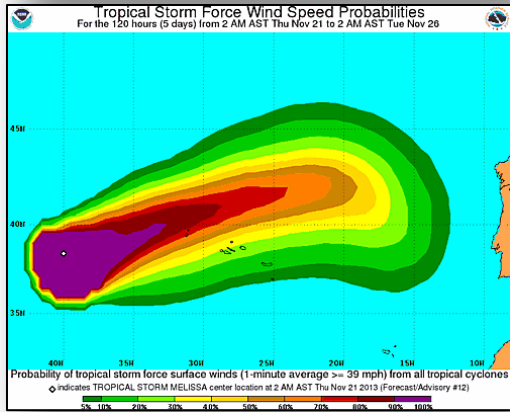
Atlantic – Tropical Storm Melissa

As of 4:00 a.m. EST

- Located 625 miles W of the Azores
- Moving ENE at 32 mph
- Decrease in forward speed and turn E forecast next couple of days
- Maximum sustained winds 50 mph
- Little change in strength forecast next couple of days
- Expected to lose tropical characteristics next 24 hours
- Tropical storm force winds extend 240 miles
- No coastal watches or warnings in effect



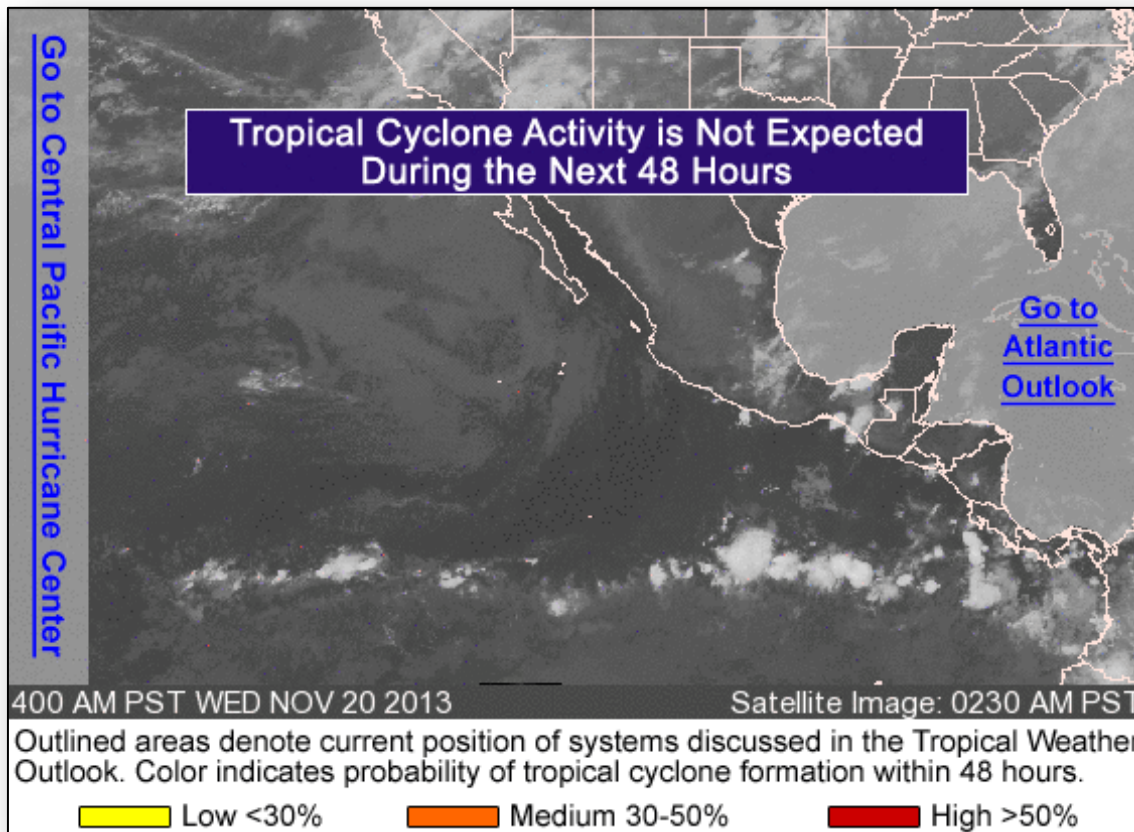
Tropical Storm Melissa Thursday November 21, 2013 4 AM EST Advisory 12 NWS National Hurricane Center	Current Information: Center Location 39.1 N 38.5 W Max Sustained Wind 50 mph Movement ENE at 32 mph	Forecast Positions: ● Tropical Cyclone ○ Post-Tropical Sustained Winds: D = 30 mph S 39.73 mph, H 74.110 mph, M = 110mph
Potential Track Area: Day 1-3 Day 4-5	Watches: Hurricane Trop-Storm	Warnings: Hurricane Trop-Storm



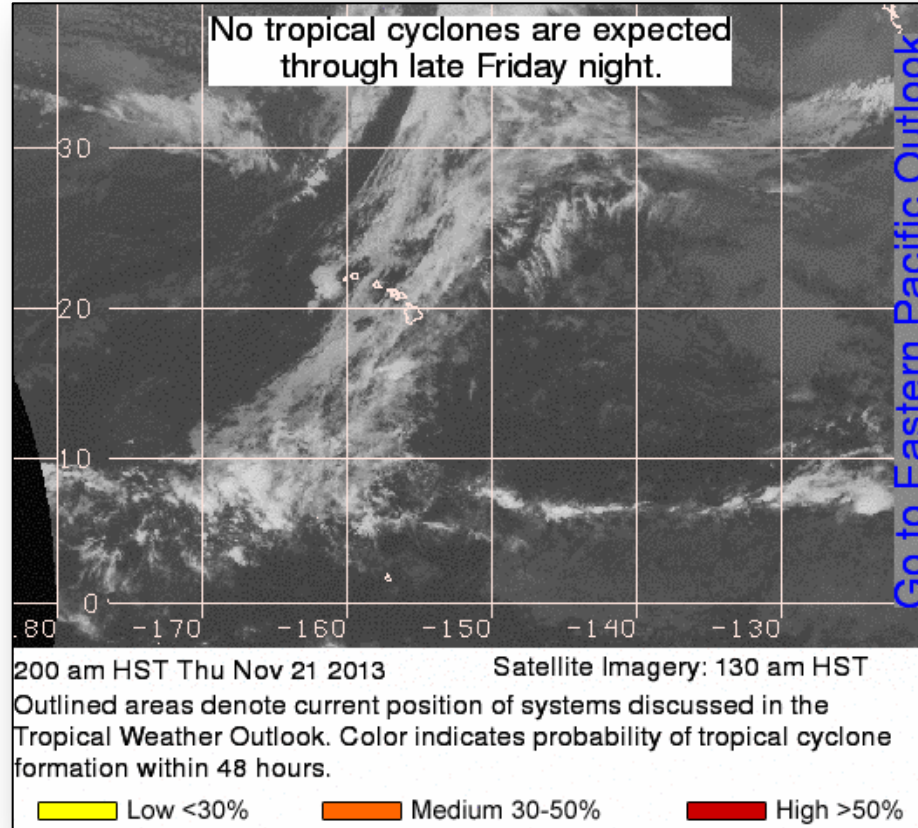
Eastern Pacific – Tropical Outlook



FEMA



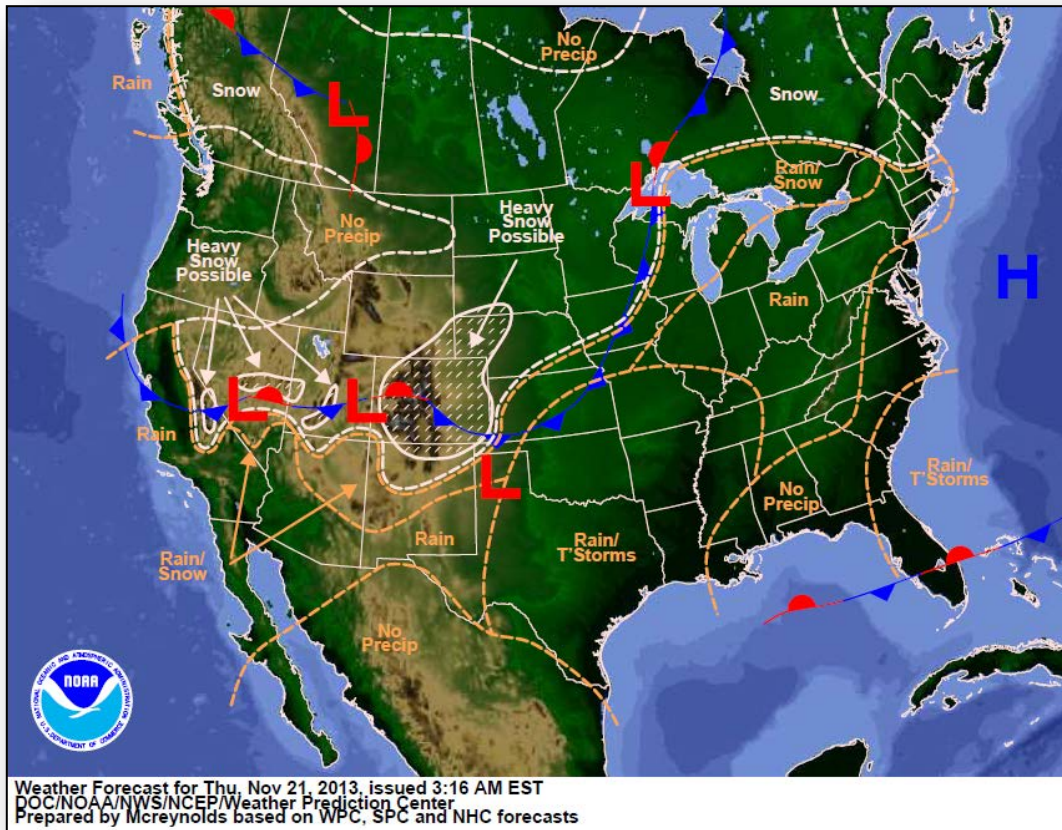
Central Pacific – Tropical Outlook



National Weather Forecast



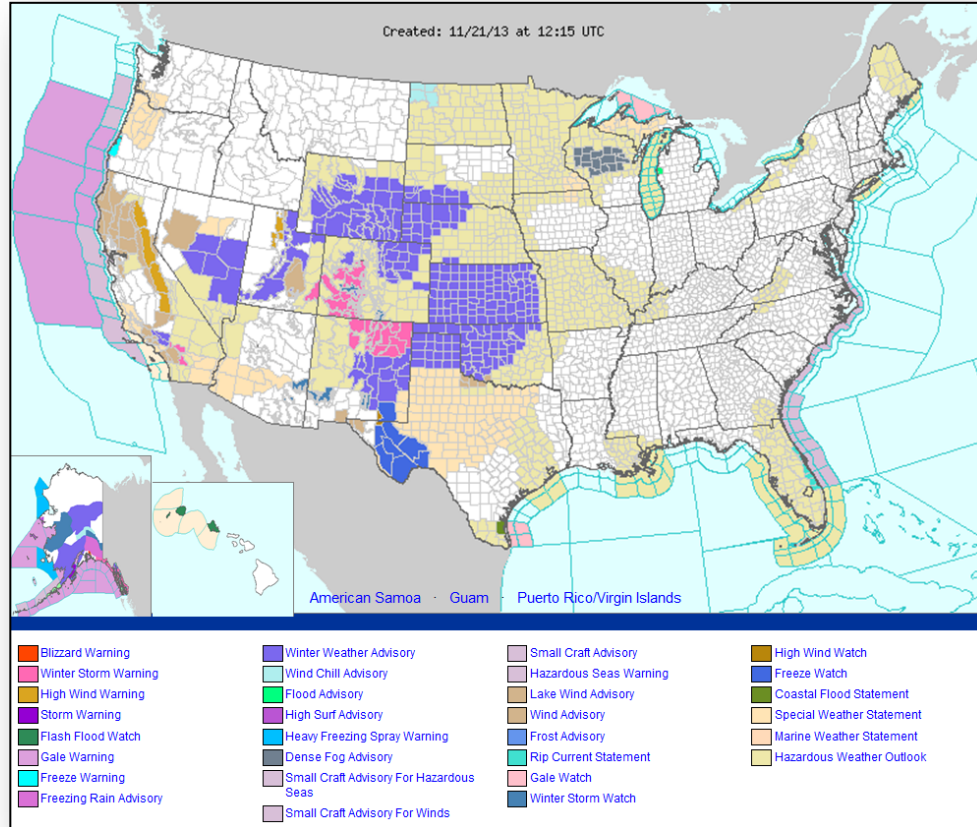
FEMA



Active Watches/Warnings

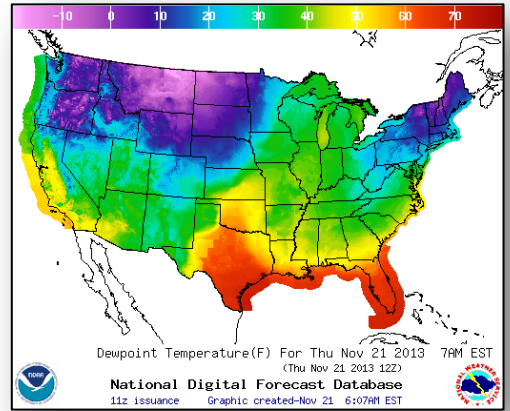


FEMA

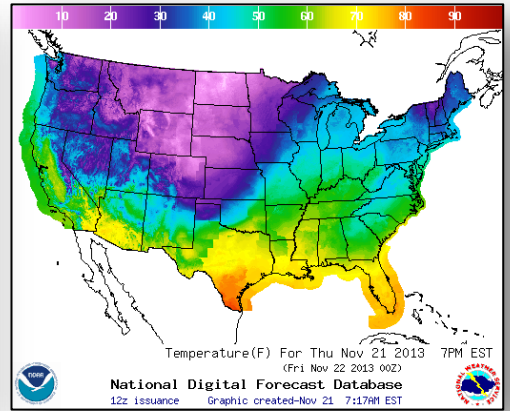


Cold Weather Outlook

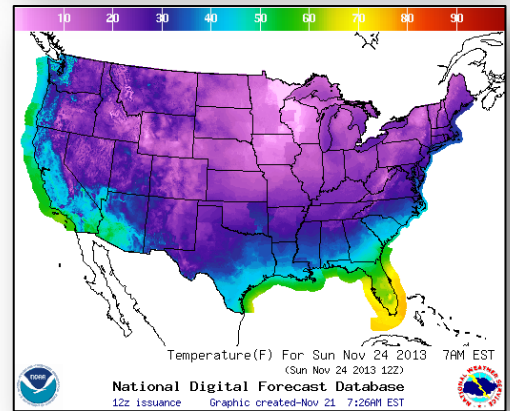
Thursday Low



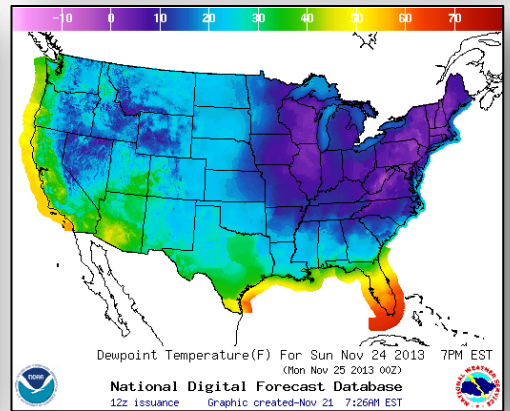
Thursday High



Sunday Low



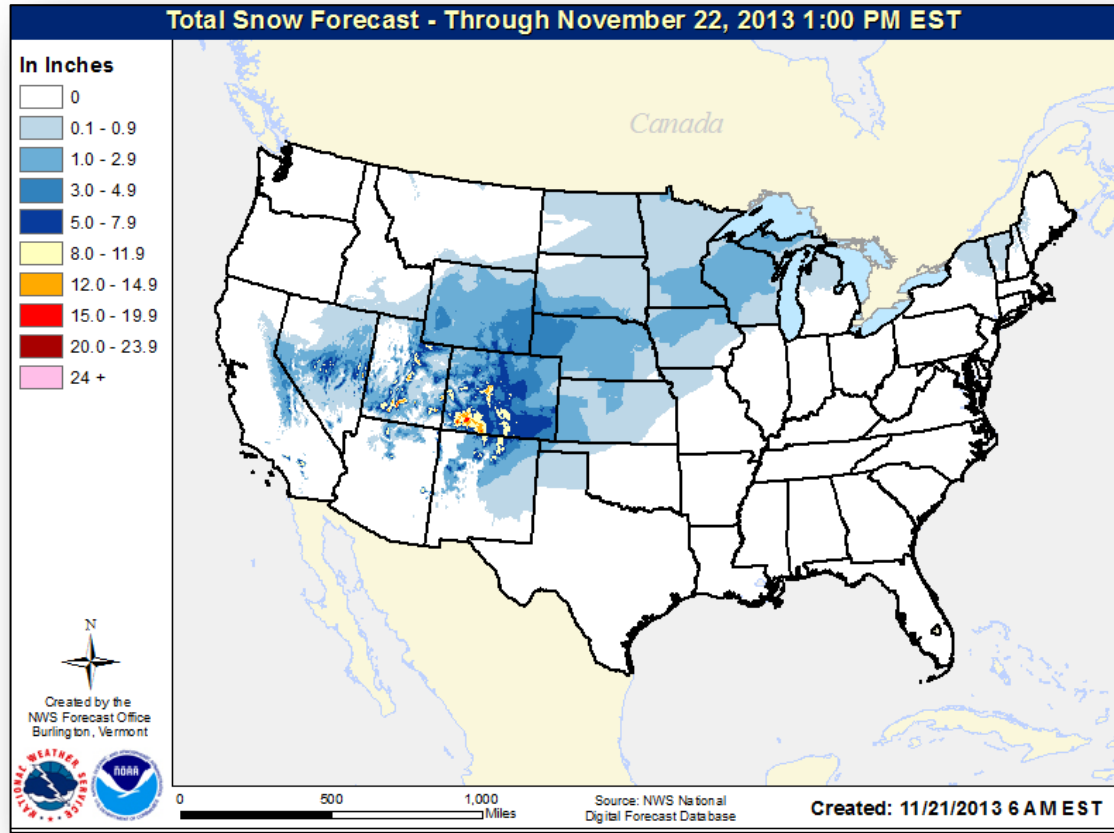
Sunday High



Total Snow Forecast



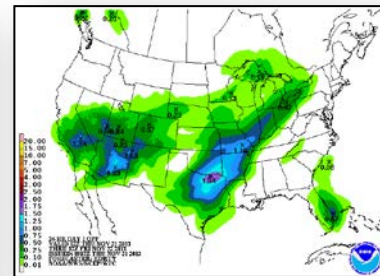
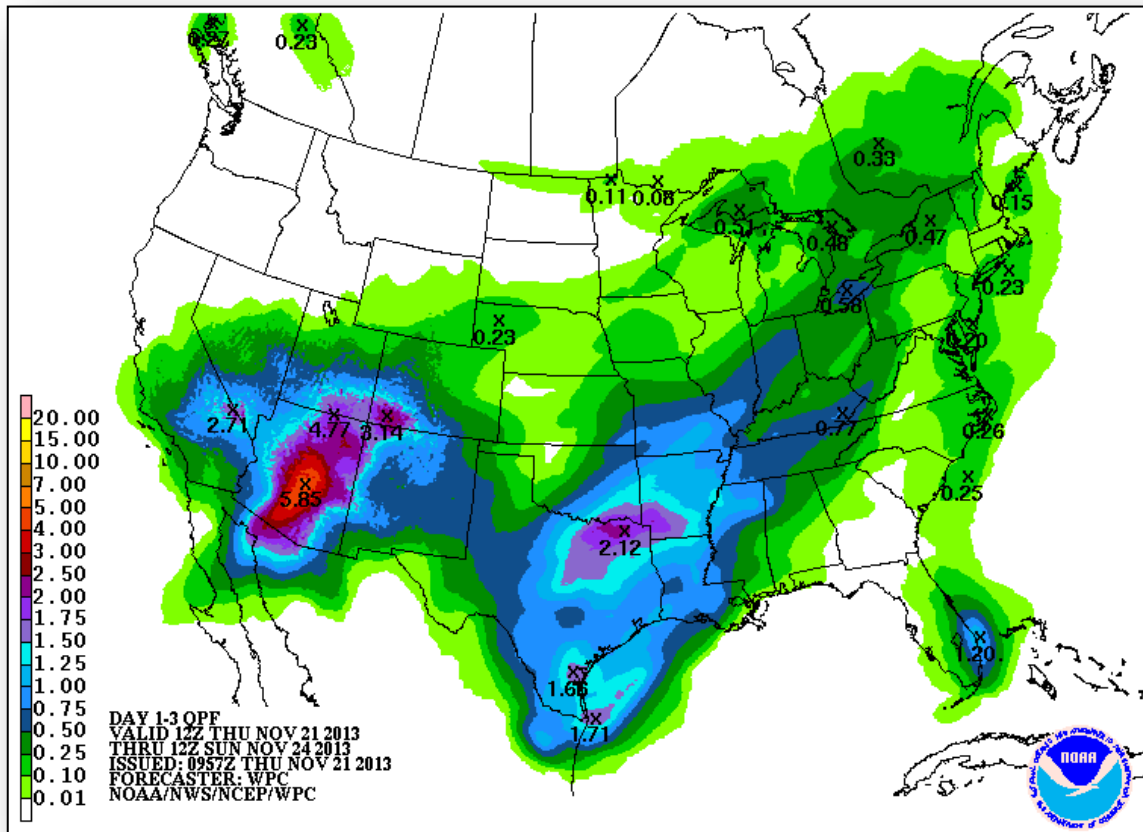
FEMA



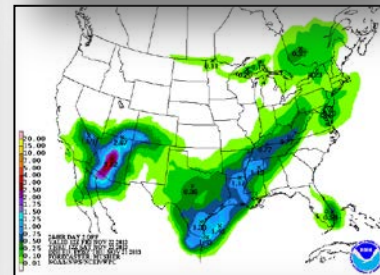
Precipitation Forecast – 3 Day



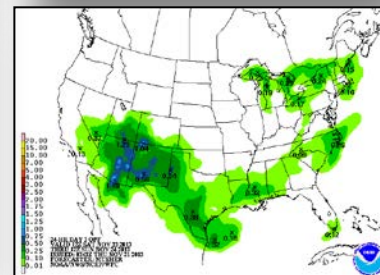
FEMA



Day 1



Day 2

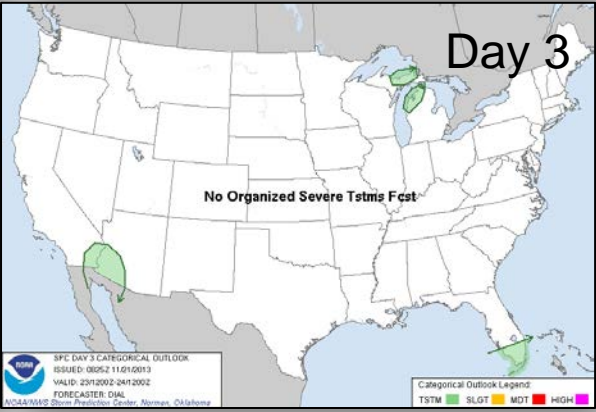
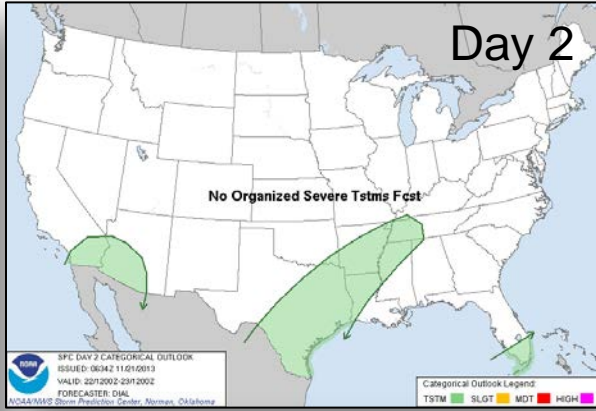
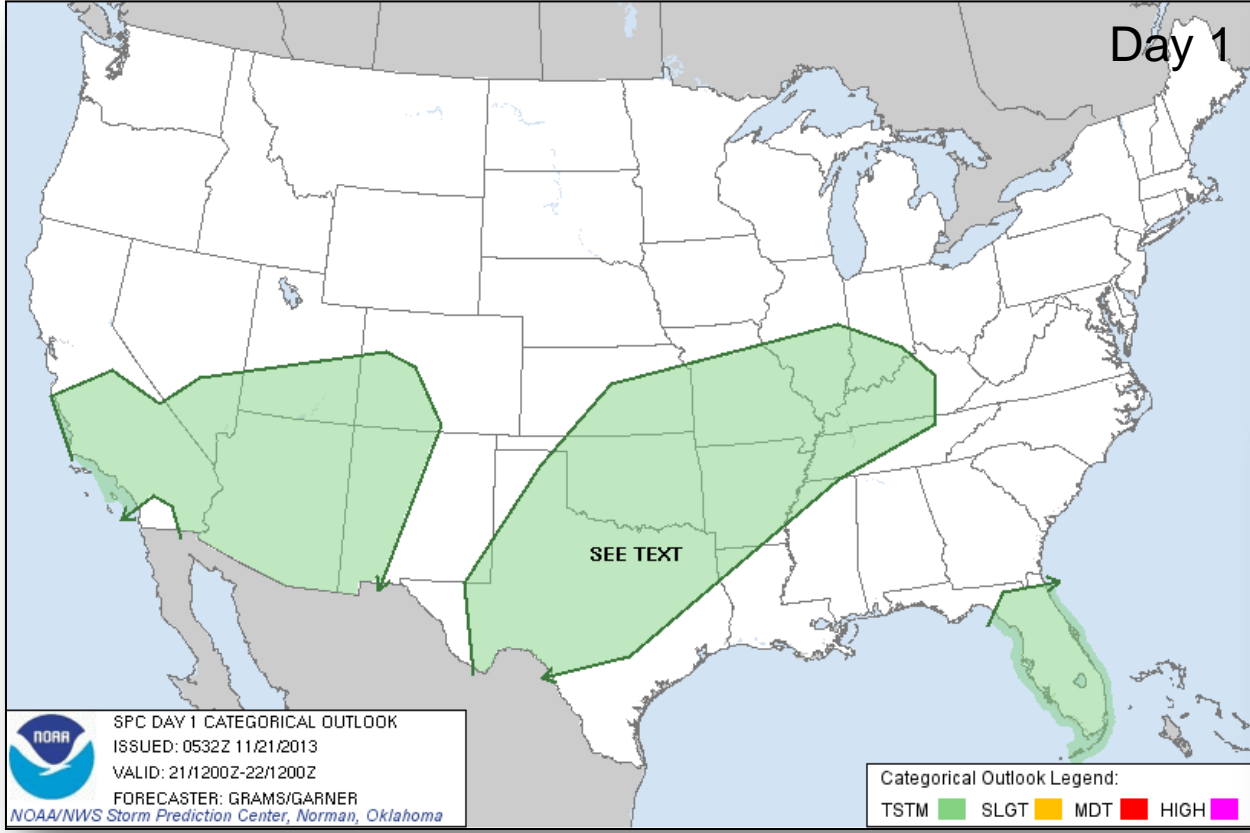


Day 3

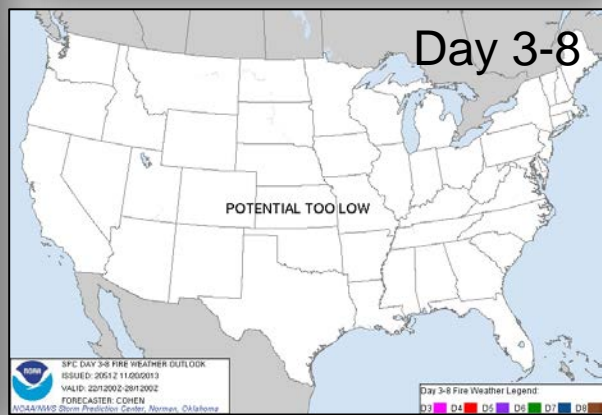
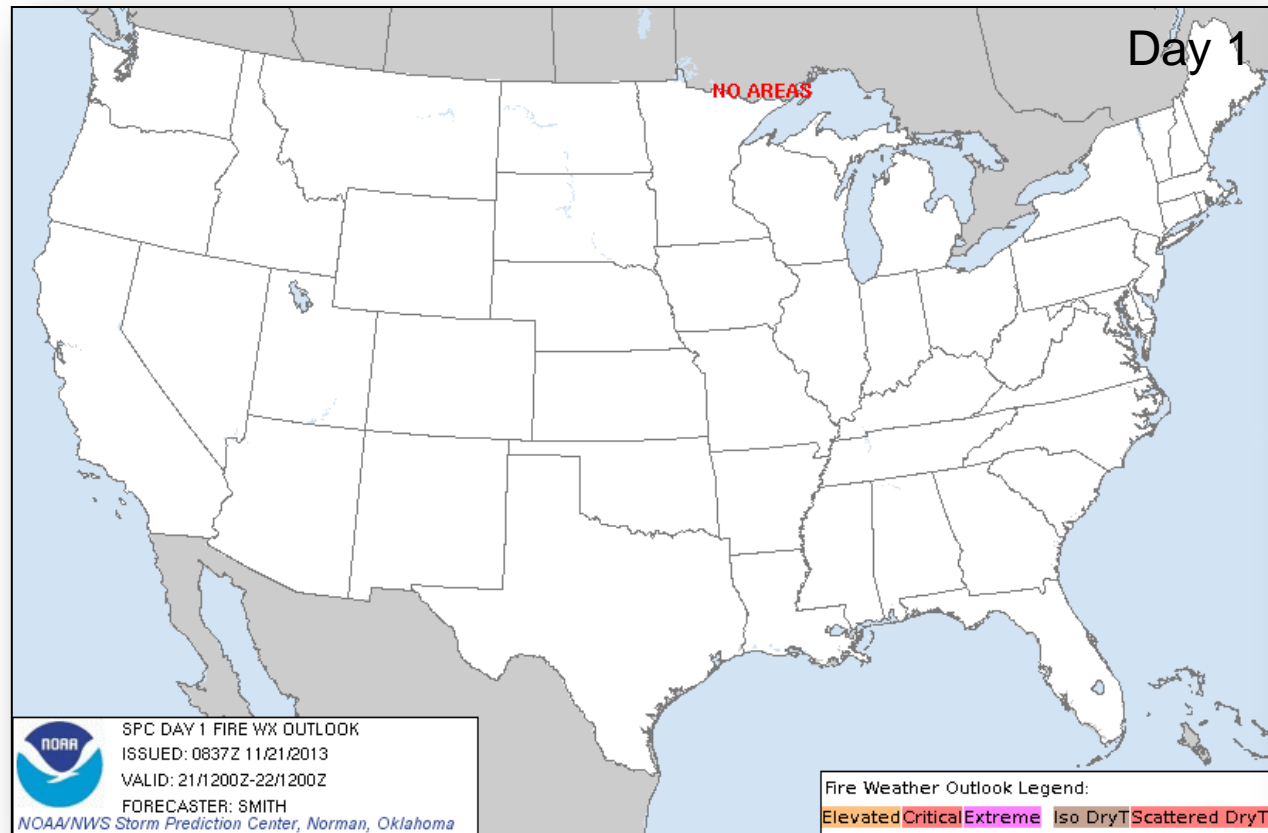
River Forecast – 7 Day



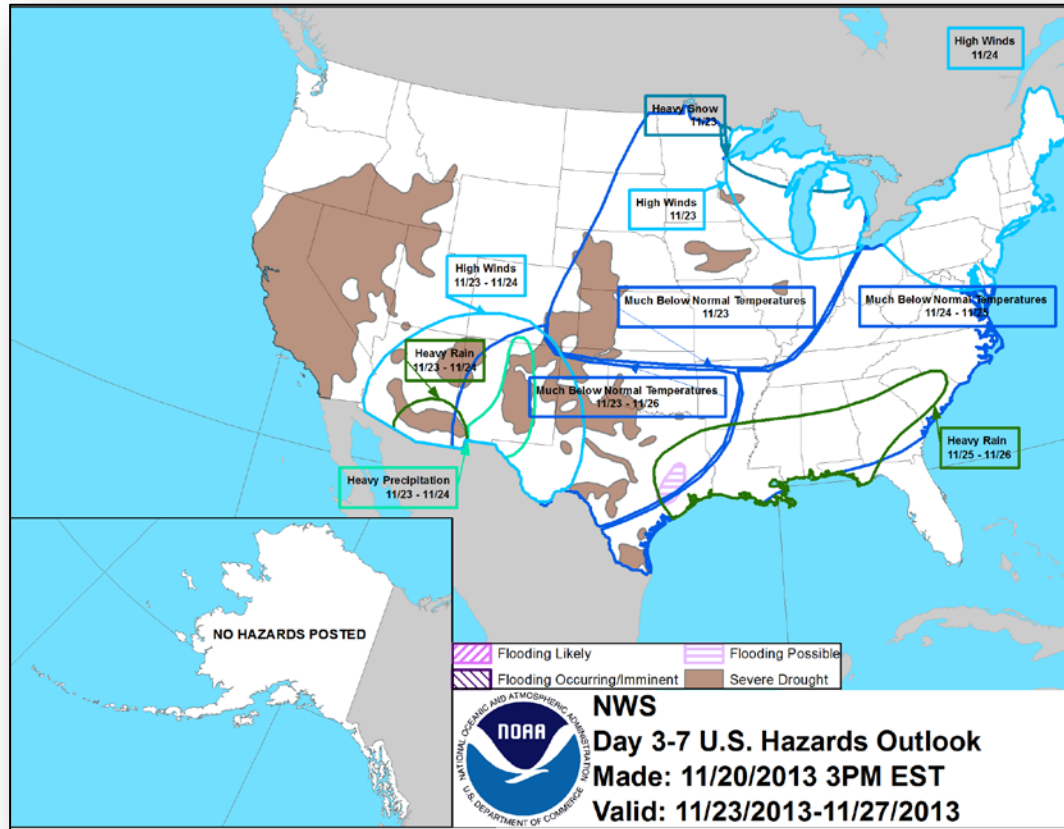
Convective Outlooks Days 1 – 3



Critical Fire Weather Areas Days 1 – 8

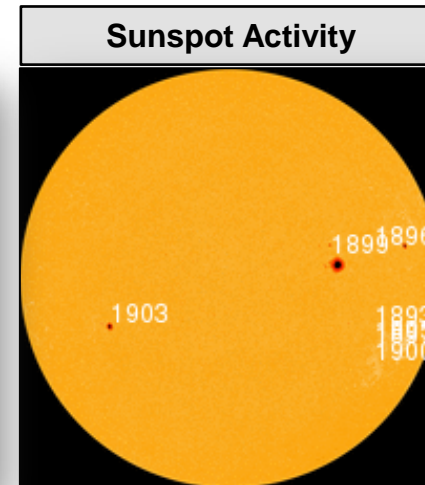
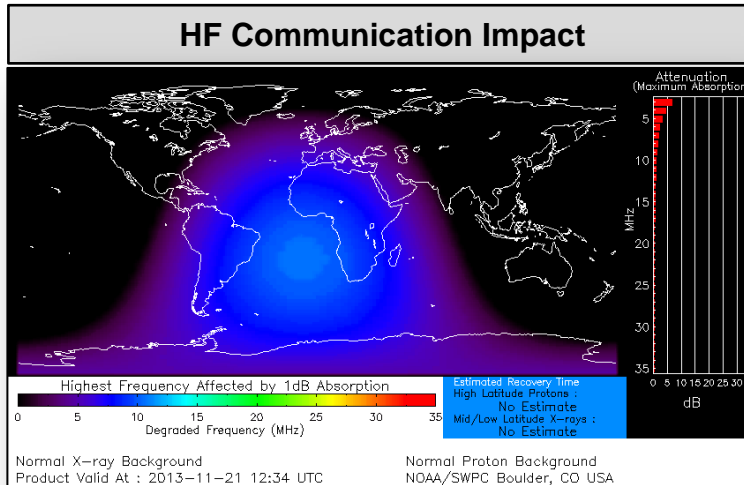


Hazard Outlook: Nov 23 - 27



Space Weather

NOAA Scales Activity (Range: 1/minor to 5/extreme)	Past 24 Hours	Current	Next 24 Hours
Space Weather Activity:	Minor	None	None
• Geomagnetic Storms	None	None	None
• Solar Radiation Storms	None	None	None
• Radio Blackouts	R1	None	None



Disaster Requests & Declarations



Declaration Requests in Process		Requests APPROVED (since last report)	Requests DENIED (since last report)
2	Date Requested	0	0
NE – DR Severe Storms, Tornadoes, Winter Storms, and Flooding	November 13, 2013		
Rosebud Sioux Tribe – DR (Appeal) Severe Storms, Straight-line Winds, and Flooding	October 29, 2013		

Disaster Amendments



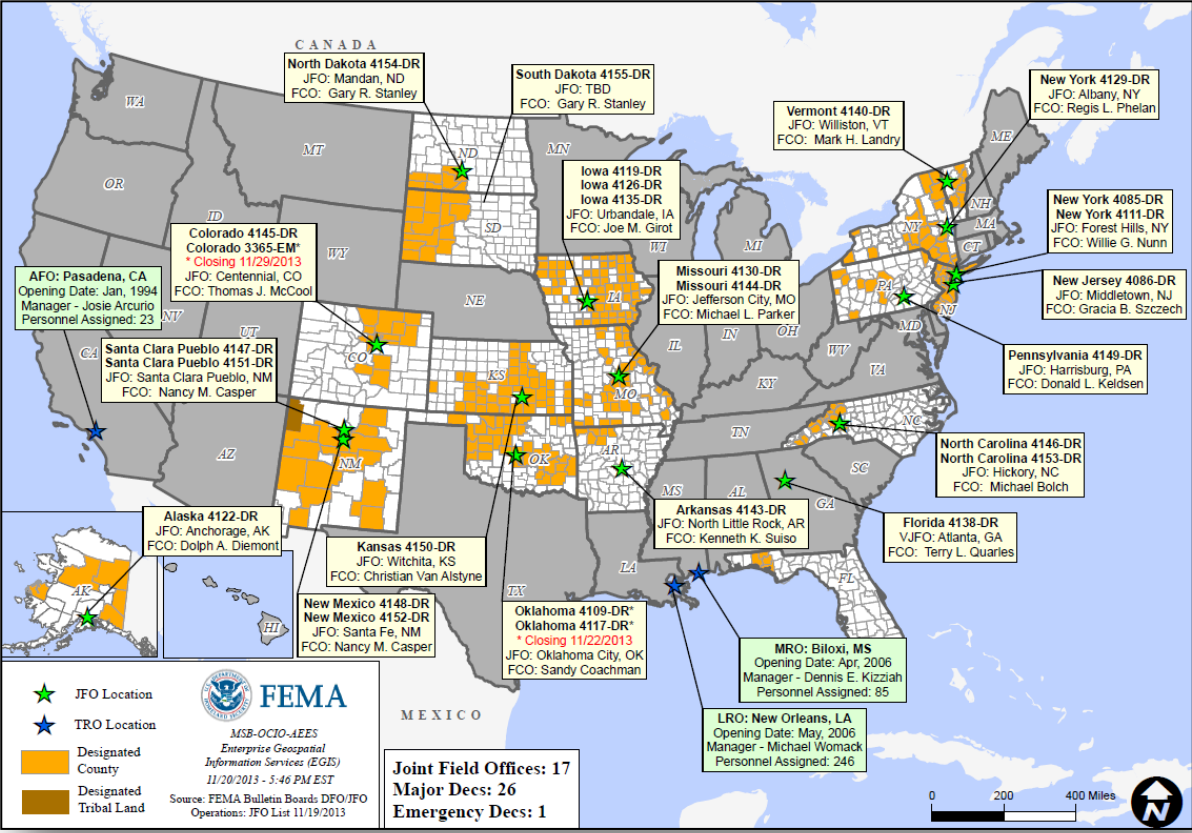
Amendment	Effective Date	Action
Amendment No. 1 to FEMA-4148-DR-NM	November 20, 2013	Adds 1 county and the Navajo Nation for Public Assistance

Joint Preliminary Damage Assessments



Region	State / Location	Event	IA/PA	Number of Counties		Start – End
				Requested	Complete	
V	IL	Severe Storms and Tornadoes November 17-18, 2013	IA	13	0	11/21-TBD
			PA	13	0	12/2-TBD
X	AK	Kenai Peninsula Southern Borough Flooding October 27-28, 2013	PA	1	0	11/19-11/21

Open Field Offices as of November 21, 2013



OFDC Cadre Member Status



Federal Coordinating Officer

Total	Deployed	Detailed	Not Available	Available	Cadre Status
40	26	1	2	11	
Total Available	Type 1	Type 2	Type 3	Type 4	
11*	1	5	2	3	

* All Type 1 FCOs are available unless deployed to a Level 1 event

Federal Disaster Recovery Coordinator

Total	Deployed	Assigned	Available	Status
9	6	4	2	

As of: 11/19/2013

MCOV Fleet / Deployment Status

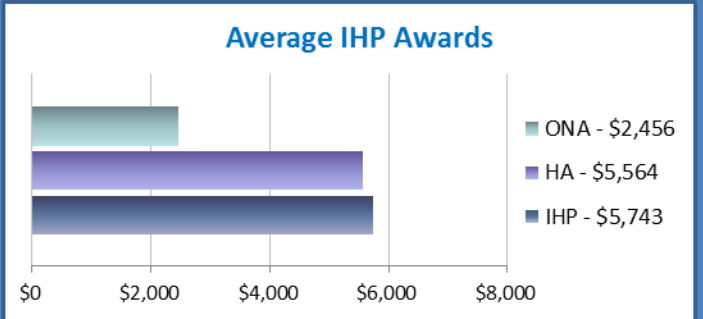
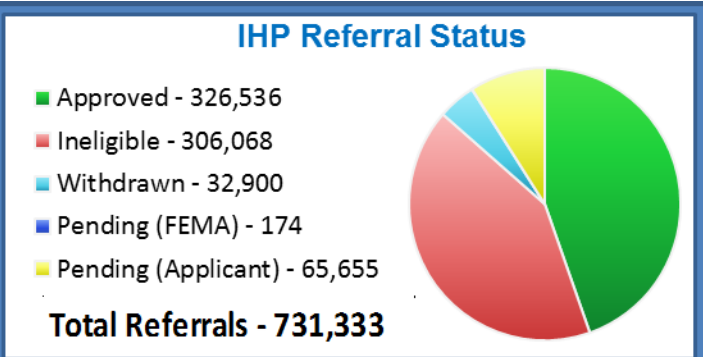
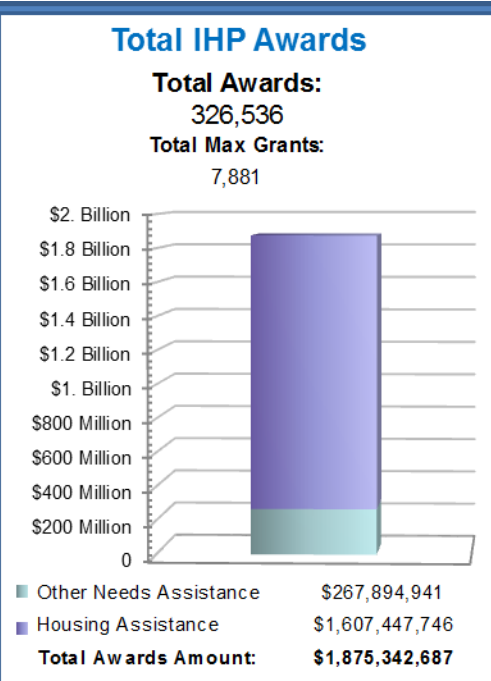
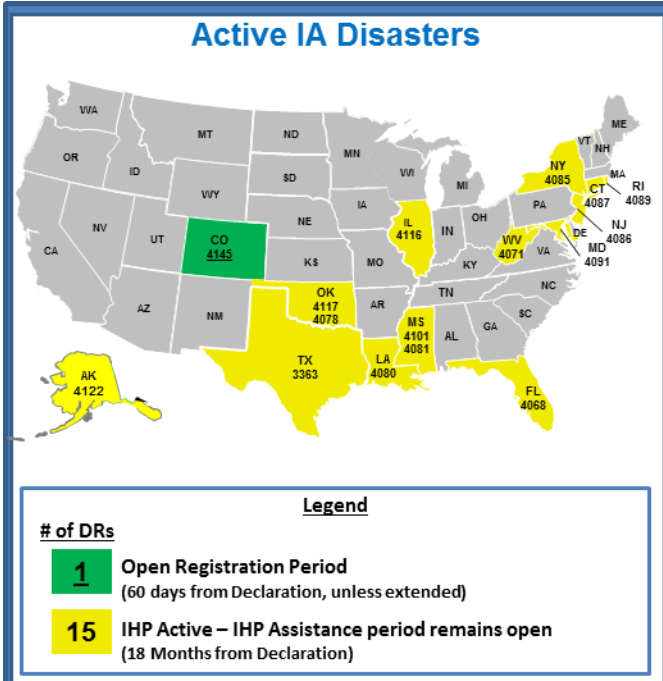


MCOV FLEET STATUS						MCOV DISASTER SUPPORT DEPLOYMENTS					
Location	Units Assigned	Available FMC	Deployed Committed	PMC	Unavailable	DR-State	OPCON	En Route	Unit Prep	Open Request	Notes:
MERS Maynard	3	3	0			DR-4145-CO	5				
MERS Frederick	8	8	0								
MERS Thomasville	14	13	1								
DC Ft Worth	20	16	4								
MERS Denver	2	2	0								
MERS Bothell	4	4	0								
Sacramento	4	4	0								
TOTAL	55	50	5	0	0	TOTAL	5	0	0	0	
Units in route for turn-in included in above totals.											

Fully Mission Capable	55
Partially Mission Capable	0
Non-Mission Capable	0
Total Not Deployed	50

Data as of: 11/20/13 @ 1500

Active IA Disasters - Referral Status & Awards



16 Total IHP Active Disasters (All information on this slide reflects data for these disasters)

Max Grants = Applicants awarded maximum IHP (\$32,400 for Major Disasters declared FY 2014)

Data as of: 11/20/13 @ 1500

IA Registration Statistics



IA Registrations and IHP Amounts as of November 20, 2013 @ 1500

DR/EM # - State	Registrations	Approved Applicants	Total HA Approved	Total ONA Approved	Total IHP Approved
4145 - CO	27,463	16,116	\$50,293,970	\$4,193,620	\$54,487,590
Totals	27,463	16,116	\$50,293,970	\$4,193,620	\$54,487,590
24 hour change	+29	+22	+\$203,027	+\$20,040	+\$223,068

NPSC Call Data for November 19, 2013

Total Calls Answered (Help Line + Registration Intake)	1,635
Average time to answer call	12 seconds
Maximum / Minimum time to answer a call	20 seconds / 10 seconds

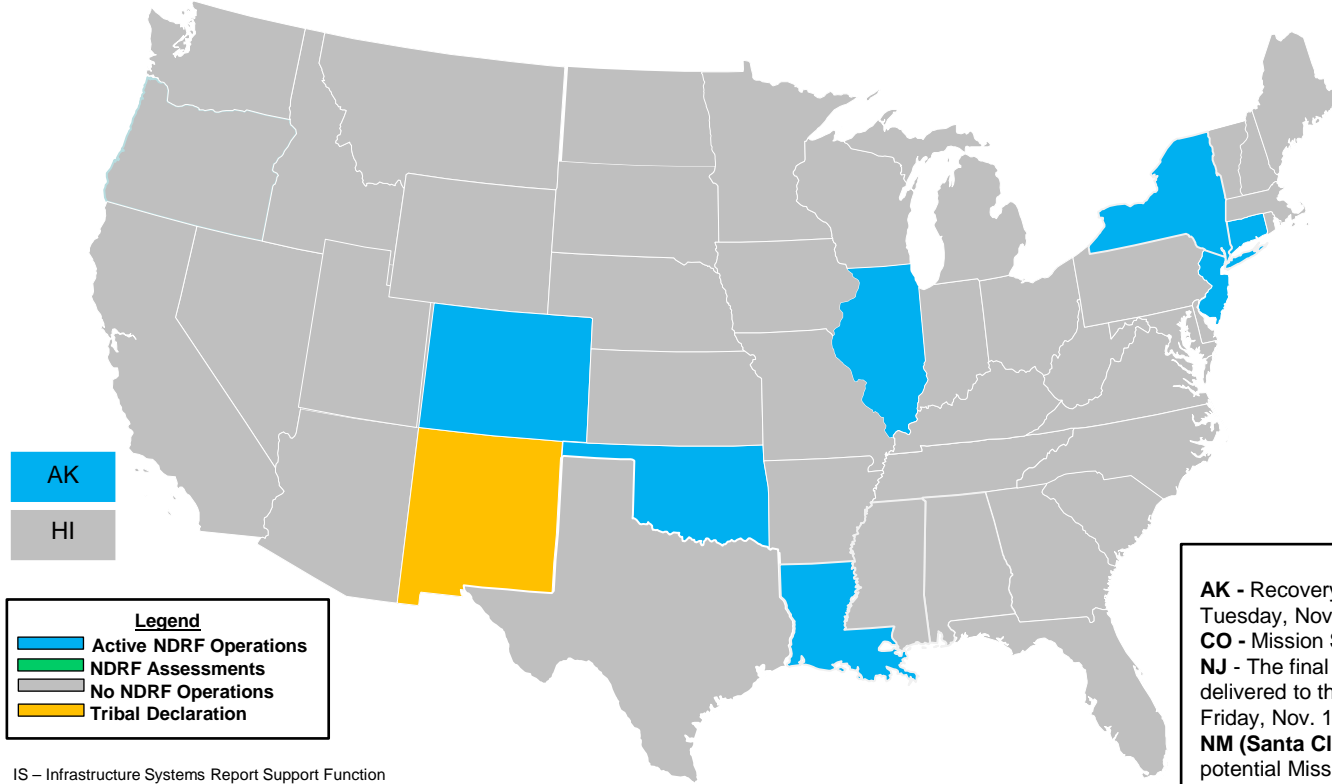
Housing Inspection Statistics



Inspection Data as of November 20, 2013 @ 1500

DR #-State	Inspectors	Inspections Assigned	Inspections Completed	Inspection % Complete	Turnaround Time (Days)
4145 - CO	15	25,038	24,867	99.32%	2.3
TOTAL	15	25,038	24,867	99.32%	2.3
24 hour change	0	+62	+55	-0.02%	-0.0

NDRF Operations



AK
HI

Legend	
■	Active NDRF Operations
■	NDRF Assessments
■	No NDRF Operations
■	Tribal Declaration

IS – Infrastructure Systems Report Support Function
 OFA – Other Federal Agency
 RSF – Recovery Support Function

DISASTER	STATE	FDRC
Sandy	CT	James McPherson
Sandy	NJ	Peter Martinasco
Sandy	NY	Ken Curtin
Isaac	LA	Wayne Rickard
Tornado	OK	Wayne Rickard
Flood	CO	Dan Alexander
Flood	AK	Joan Rave
Flood	Santa Clara Pueblo	Nancy Casper

HIGHLIGHTS:

AK - Recovery Support Function Kickoff Meeting was held Tuesday, Nov. 19.

CO - Mission Scoping Assessment targeted for completion Nov. 25.

NJ - The final draft of the Sea Bright 2020 Recovery Plan was delivered to the Borough electronically and in hard copy form on Friday, Nov. 15.

NM (Santa Clara Pueblo) - Continue determination of OFAs for potential Mission Assignment to IS-RSF.

IMAT Status



National Teams					
Team	Status	Team	Status	Team	Status
Blue/White/Red	Available/Mission Capable	East	Assigned/Deployed (CO)	West	Available/Mission Capable
Regional Teams					
Team	Status	Team	Status	Team	Status
Region I	Available/Mission Capable	Region V	Assigned/Deployed (IL)	Region VIII	Assigned/Deployed (SD)
Region II	Available/Mission Capable	Region VI-1	Available/Mission Capable	Region IX-1	Available/Mission Capable
Region III	Assigned/Deployed (PA)	Region VI-2	Assigned/Deployed (NM)	Region IX-2	Available/Mission Capable
Region IV-1	Available/Mission Capable	Region VII	Assigned/Deployed (KS)	Region X	Not Mission Capable
Region IV-2	Assigned/Deployed (NC)	Incident Management Assistance Team			

- = Available/Mission Capable
- = Available/Partially Mission Capable
- = Assigned/Deployed
- = Not Mission Capable

Urban Search & Rescue



INCIDENT SUPPORT TEAMS (Red-White-Blue) – Monthly On Call Rotation											
JAN	FEB	MAR	APR	MAY	JUN	JUL	AUG	SEP	OCT	NOV	DEC
WEST				CENTRAL				EAST			
Team	Status	Team	Status	Team	Status	Team	Status	Team	Status	Team	Status
CA-TF1	Available	AZ-TF1	Available	FL-TF1	Available	CA-TF2	Available	CO-TF1	Available	FL-TF2	Available
CA-TF3	Available	IN-TF1	Available	MA-TF1	Available	CA-TF4	Available	MO-TF1	Available	MD-TF1	Available
CA-TF5	Available	NE-TF1	Available	NY-TF1	Available	CA-TF6	Available	NM-TF1	Conditional	PA-TF1	Available
CA-TF7	Available	NV-TF1	Conditional	VA-TF1	Available	CA-TF8	Available	TN-TF1	Available	VA-TF2	Available
WA-TF1	Available	TX-TF1	Available	OH-TF1	Available			UT-TF1	Available		

= Available/Mission Capable
 = Available/Partially Mission Capable

= Assigned/Deployed
 = Out-of-Service

RRCC / Regional Watch Center Status



Region	RRCC	Regional Watch Center
I	Not Activated	Maynard MOC (24/7)
II	Not Activated	24/7
III	Not Activated	24/7
IV	Not Activated	24/7
V	Level III	24/7
VI	Not Activated	Denton MOC (24/7)
VII	Not Activated	24/7
VIII	Not Activated	Denver MOC (24/7)
IX	Not Activated	24/7
X	Not Activated	Bothell MOC (24/7)

 = Not Mission Capable

 = Available/Partially Mission Capable

 = Available/Mission Capable

National Team Status



Team/Status	Current Location	Remarks
National Watch Center	Washington, DC	Watch/Steady State
NRCC	Washington, DC	Not Activated
HLT	Miami, FL	Activated
DEST	Washington, DC	Not Activated
Mission Capable	Partially Mission Capable	Not Mission Capable



FEMA

FEMA's mission is to support our citizens and first responders to ensure that as a nation we work together to build, sustain, and improve our capability to prepare for, protect against, respond to, recover from, and mitigate all hazards.