



# **FEMA**

## **Daily Operations Briefing**

**Friday, November 29, 2013**

**8:30 a.m. EST**

# Significant Activity: Nov 27 – 29



**Significant Events:** Winter Storm – Eastern US (Final)

## **Tropical Activity:**

- Atlantic – Area 1 (Low chance/10%)
- Eastern Pacific – Tropical cyclone activity not expected next 48 hours
- Central Pacific – No tropical cyclones expected through Saturday night
- Western Pacific – No activity threatening U.S. territories

## **Significant Weather:**

- Snow – Great Lakes and Northern Intermountain/Northern Rockies
- Rain and thunderstorms – Coastal Southeast
- Rain – Coastal Washington and Southern California
- Critical Fire Weather Areas/Red Flag Warnings: None
- Space Weather: No space weather storms observed or predicted

**Earthquake Activity:** No significant activity

**Declaration Activity:** Amendment No.1 to FEMA-4152-DR-NM

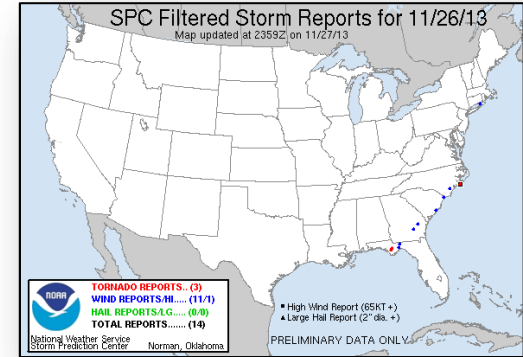
# Winter Storm – Eastern US (Final)

## **November 26-28, 2013:**

- Strong winter storm moved through eastern seaboard
- Brought heavy rain/snow, wintry mix, strong winds and tornadoes
- Two confirmed tornadoes in NC (preliminarily assessed EF-2 & EF-1)

## **Impacts:**

- Power outages (downed trees/power lines) & limited property damage
  - Power restored to most customers; sporadic outages remain
  - Down from peak of 95,000 (NH-50k; MA-20k; NY-25k)
- North Carolina (Carteret County)
  - Isolated wind/tornado damage to homes, a community college and hospital
  - 12 minor injuries in Morehead City (est. pop. 8,661)



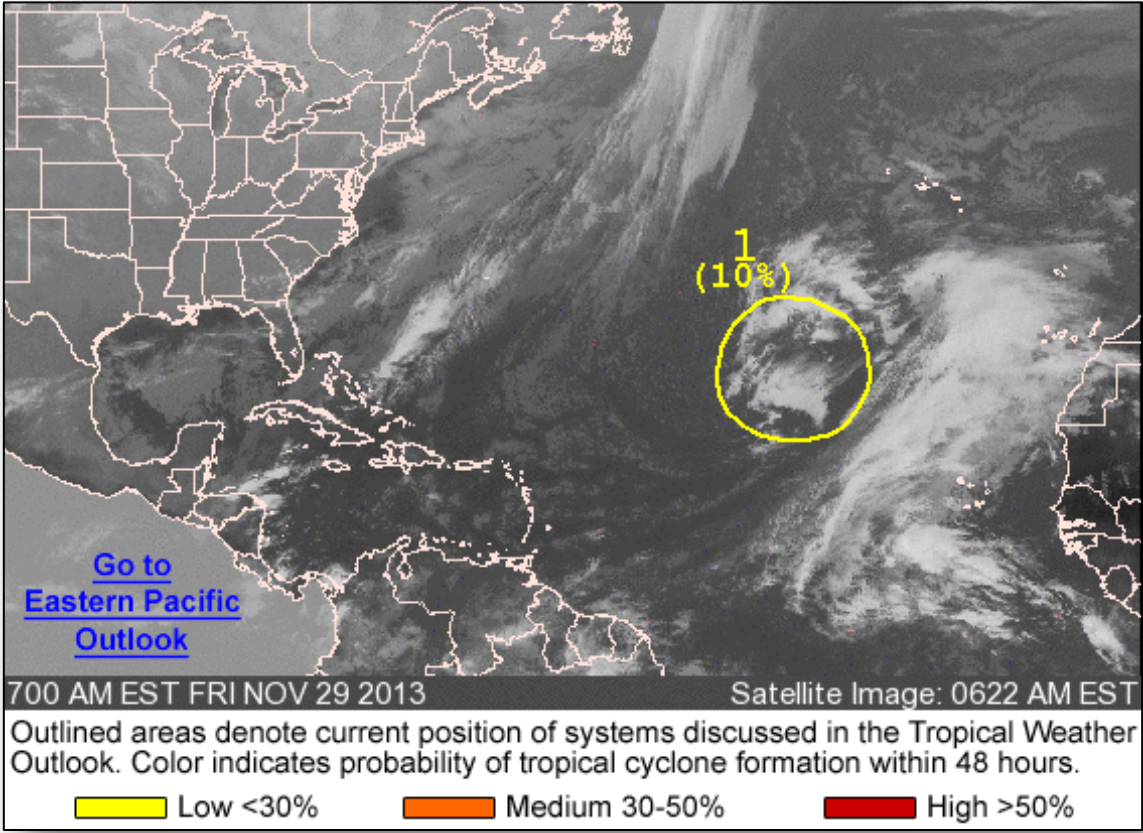
## **Response:**

- All FEMA Regions remain at Watch/Steady State
- EOC in TN remain Partially Activated
- All other EOCs remain at—or have returned to—Normal Operations
- No shortfalls and no requests for FEMA assistance

# Atlantic – Tropical Outlook



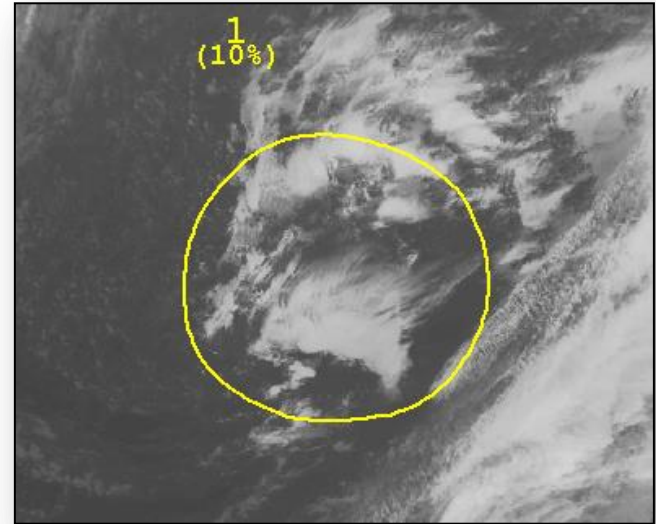
FEMA



# Atlantic – Area 1

## As of 7:00 a.m. EST

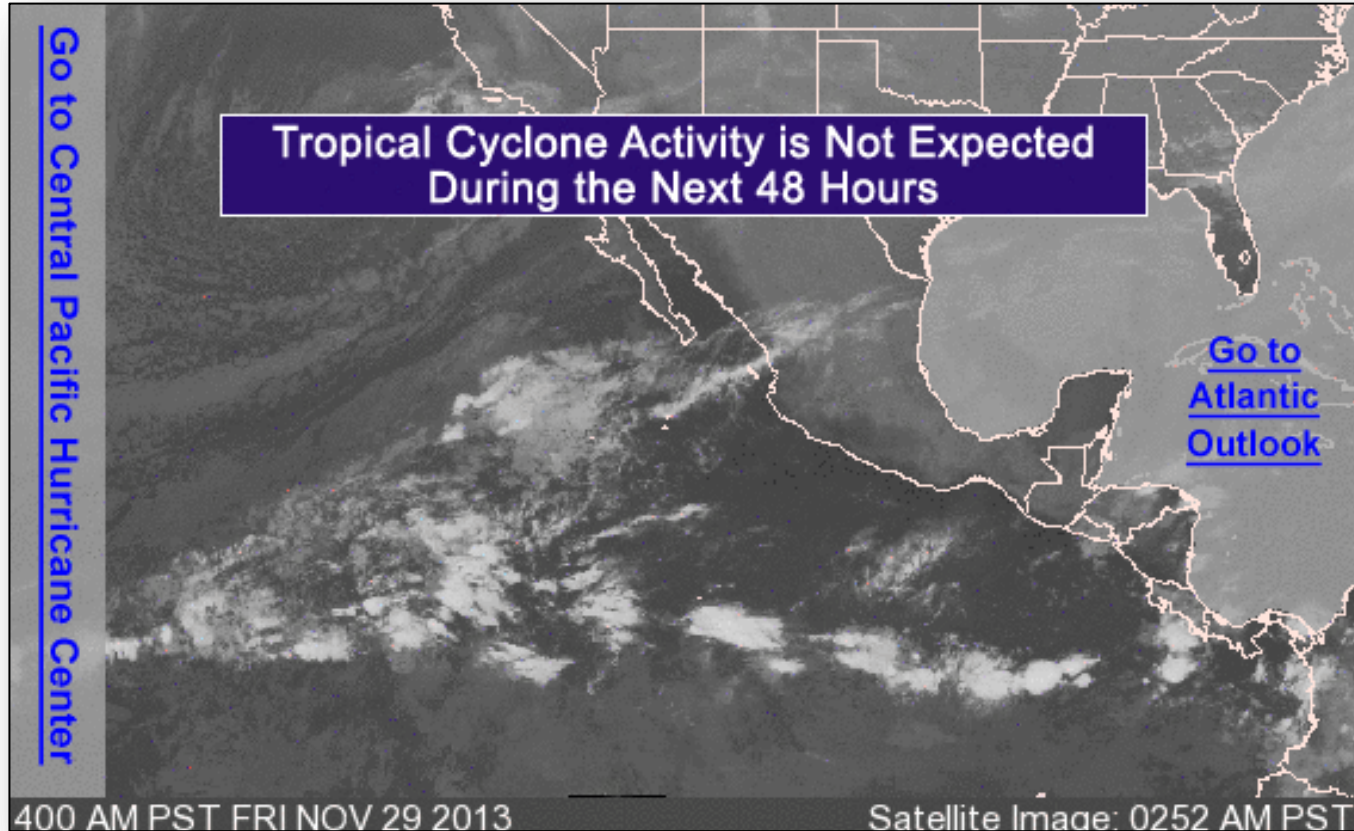
- Non-tropical low system located over the eastern Atlantic
- Midway between the Lesser Antilles and the Azores
- Producing disorganized shower and thunderstorm activity
- Moving northeastward during next several days
- Development as a subtropical cyclone is becoming less likely
- Probability of tropical cyclone development:
  - Next 48 hours: Low chance (10%)
  - Next 5 days: Low chance (10%)



# Eastern Pacific – Tropical Outlook



FEMA

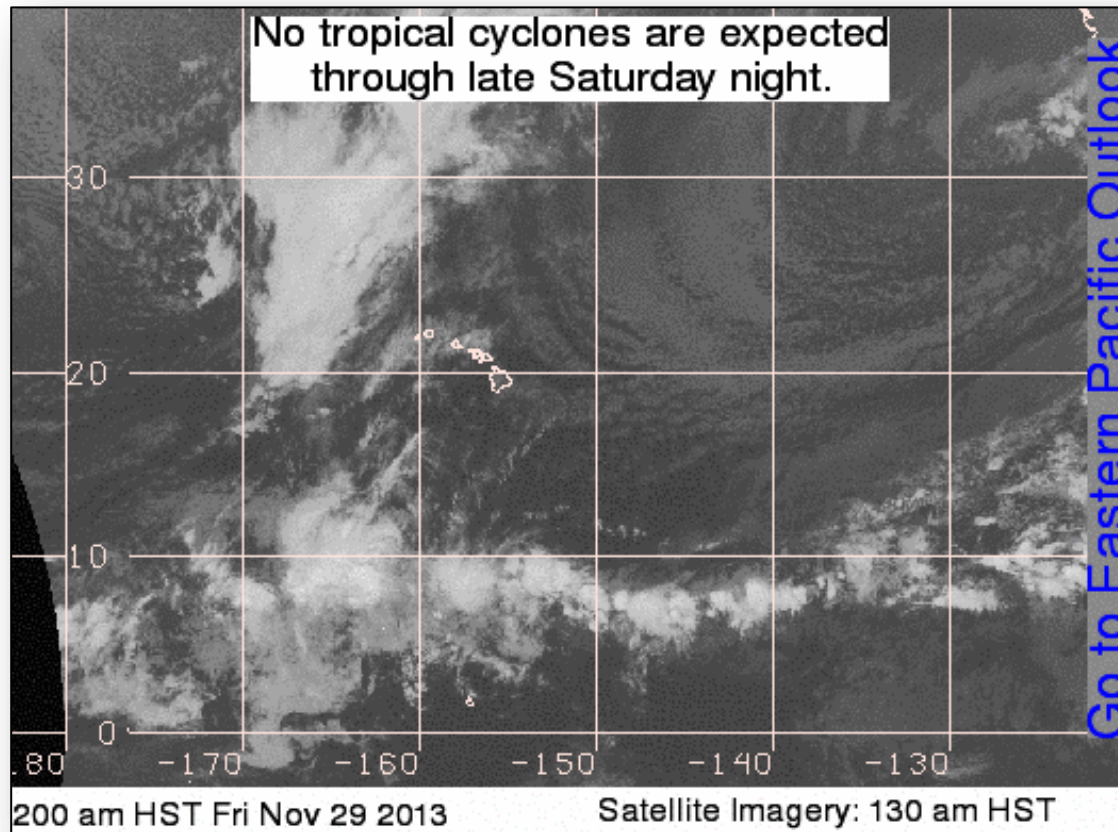




# Central Pacific – Tropical Outlook



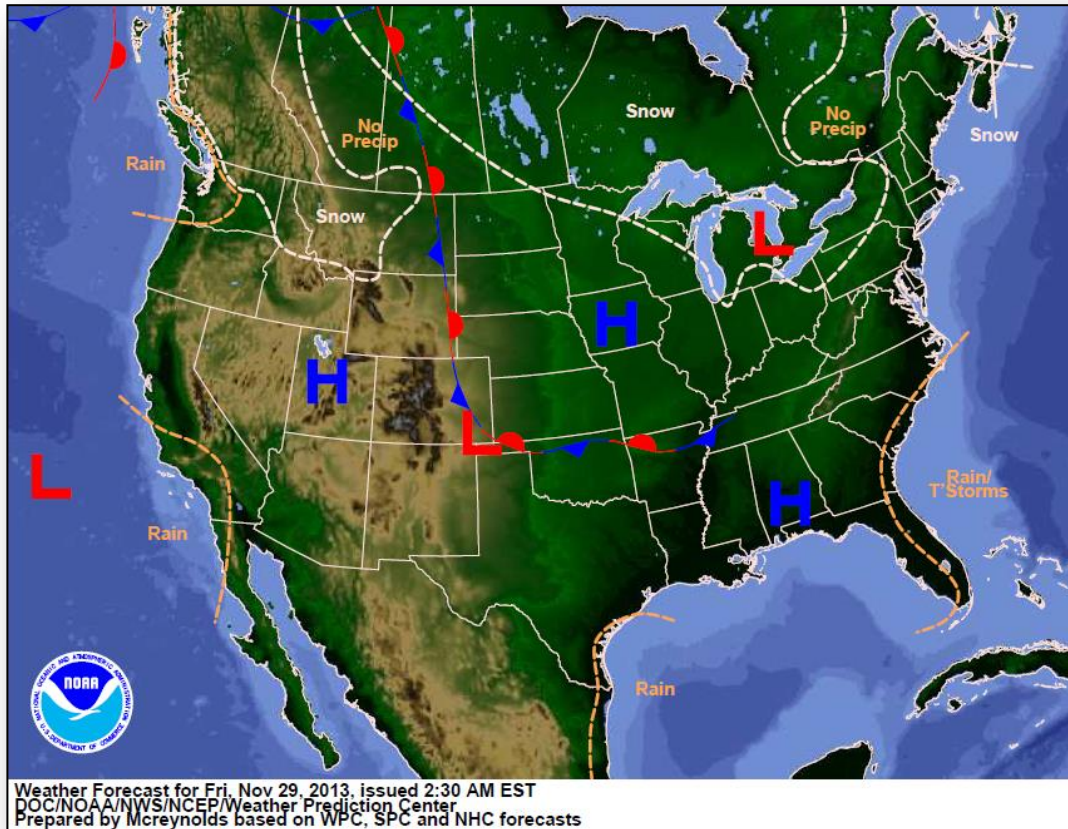
FEMA



# National Weather Forecast



FEMA

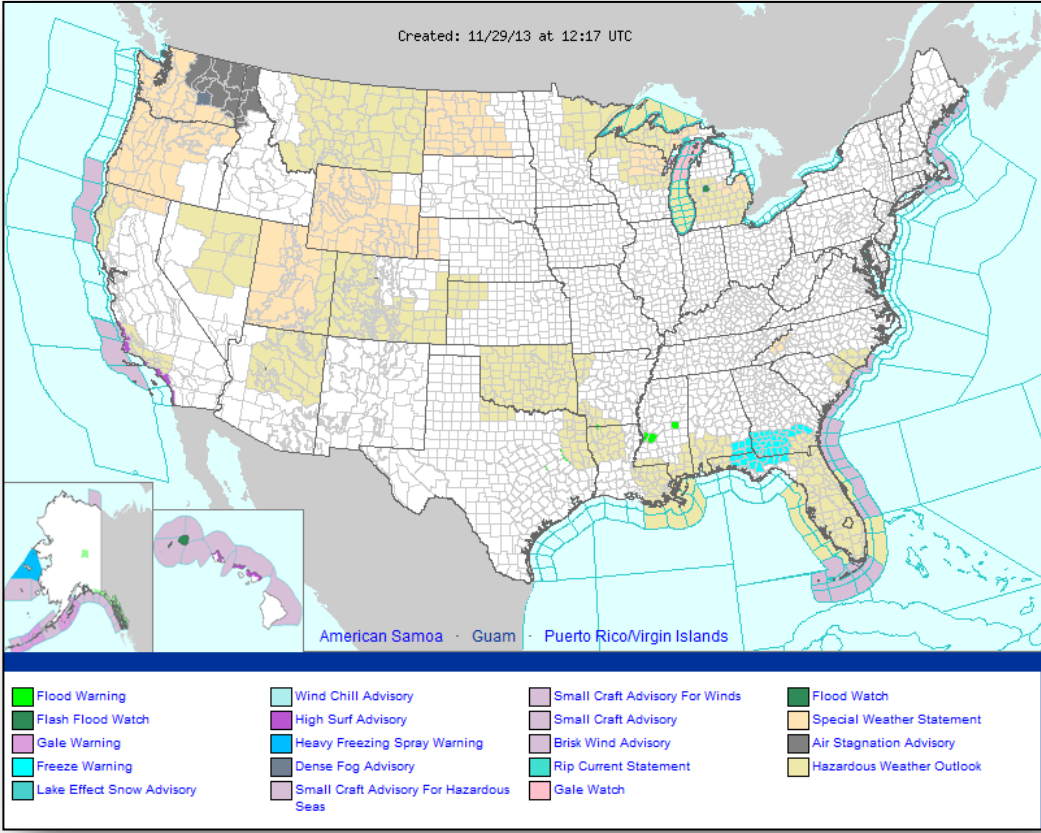




# Active Watches/Warnings

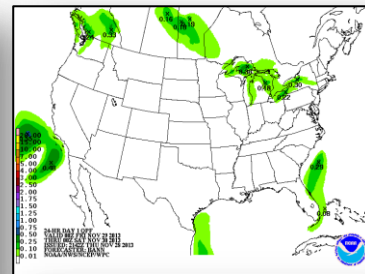
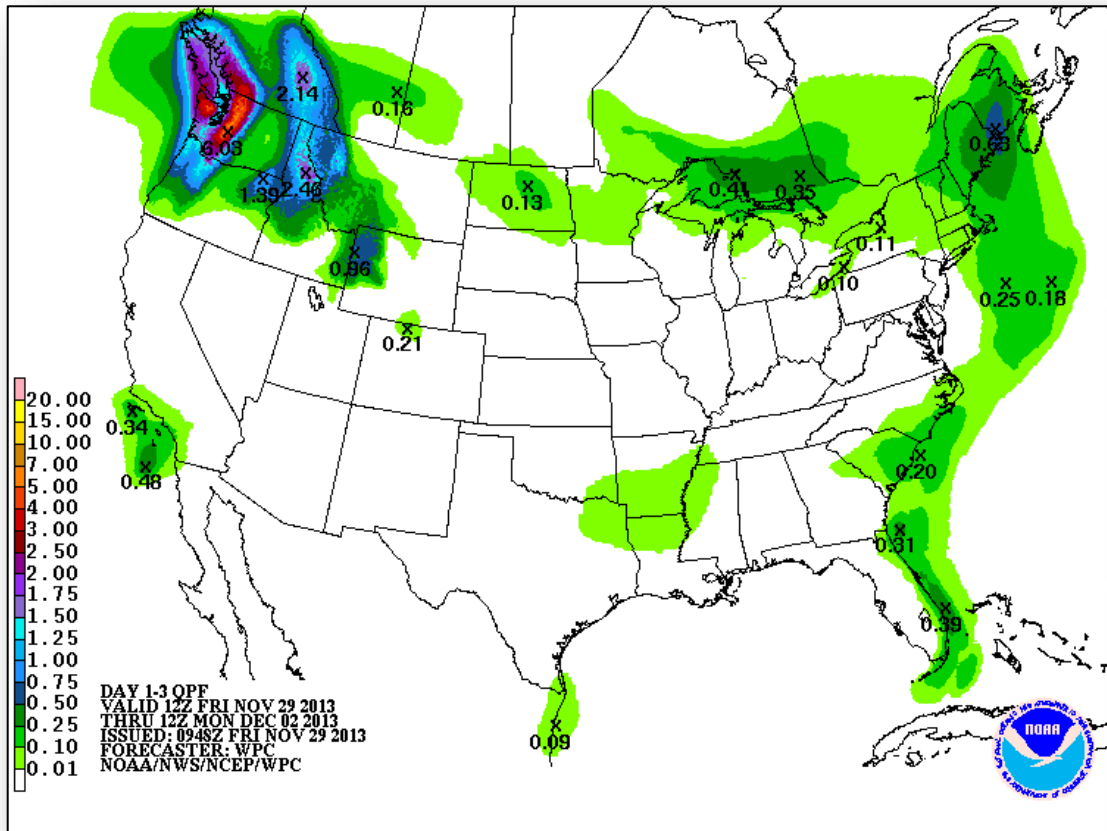


FEMA

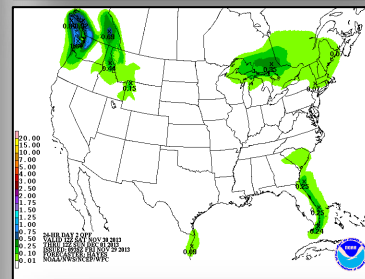




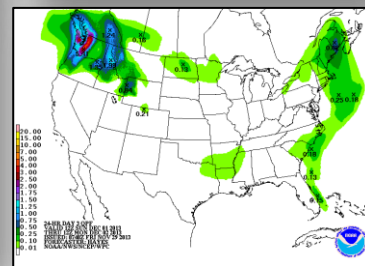
# Precipitation Forecast – 3 Day



Day 1

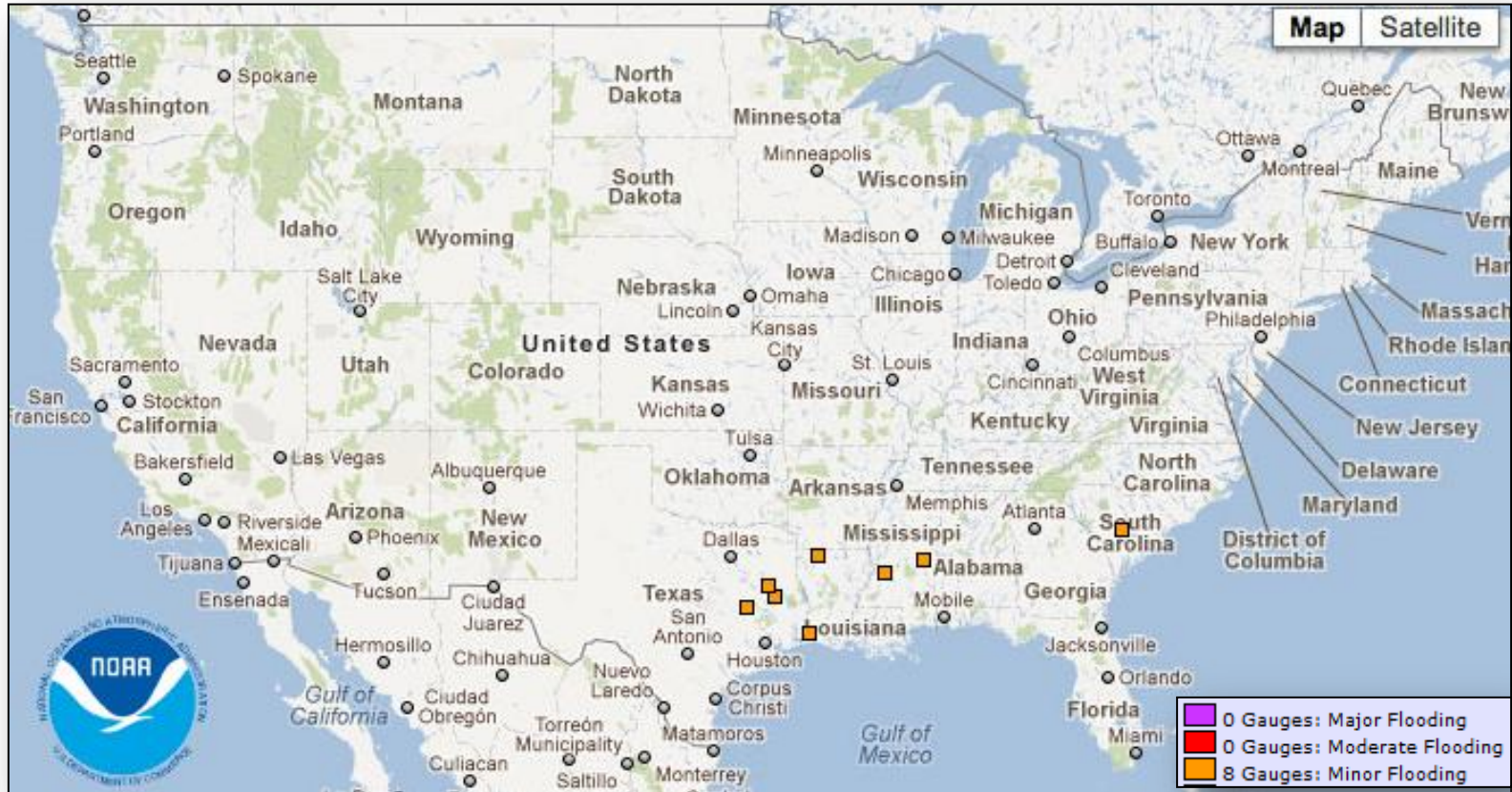


Day 2

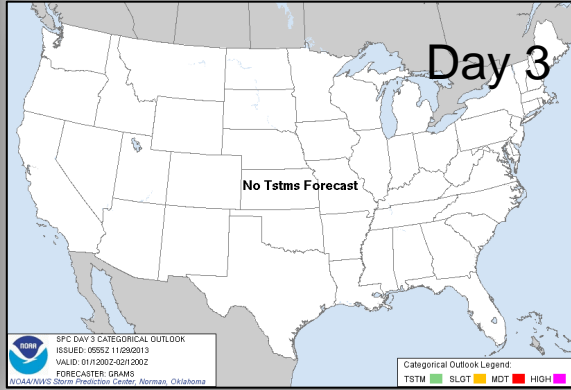
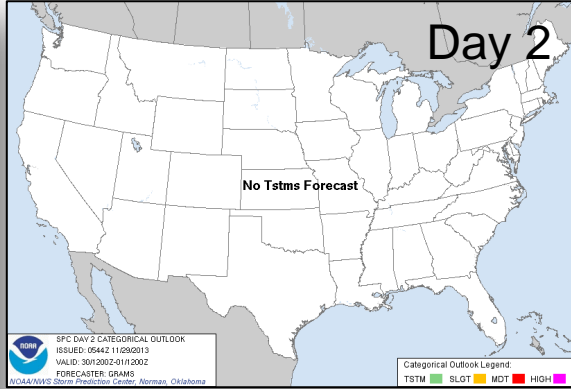
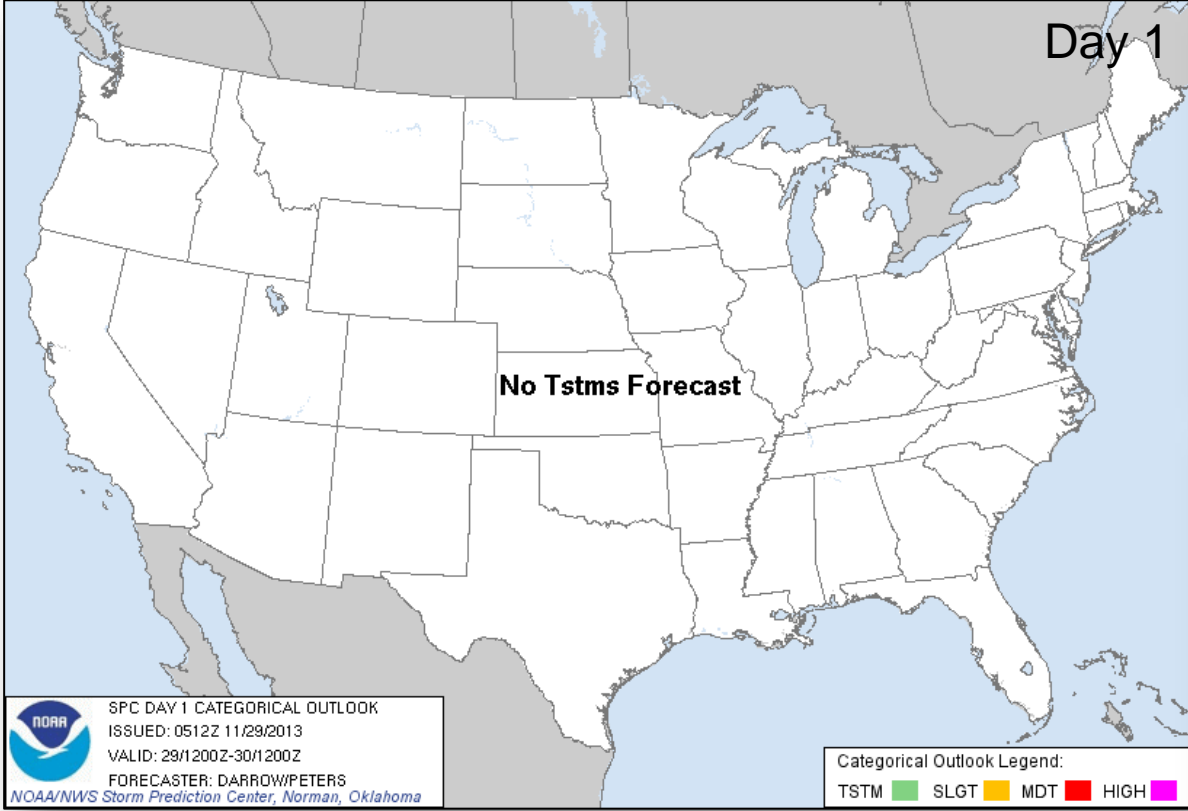


Day 3

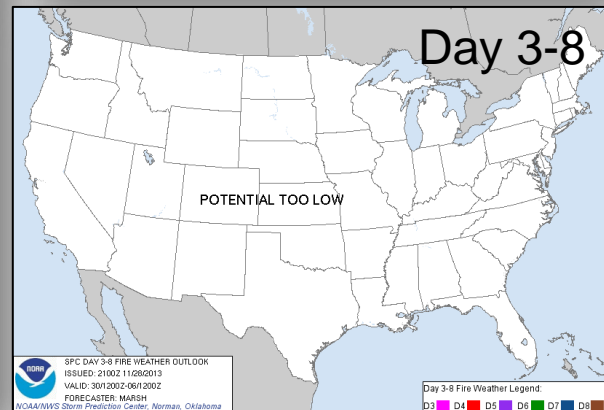
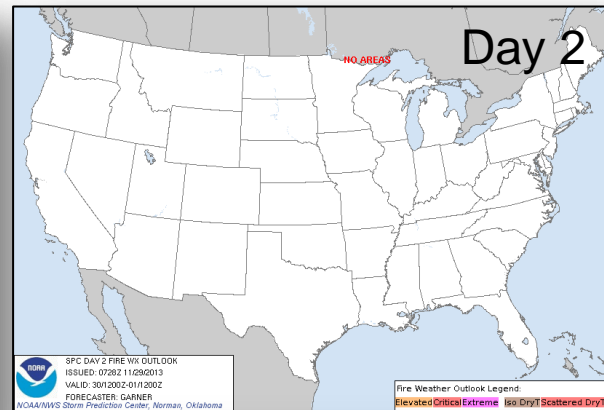
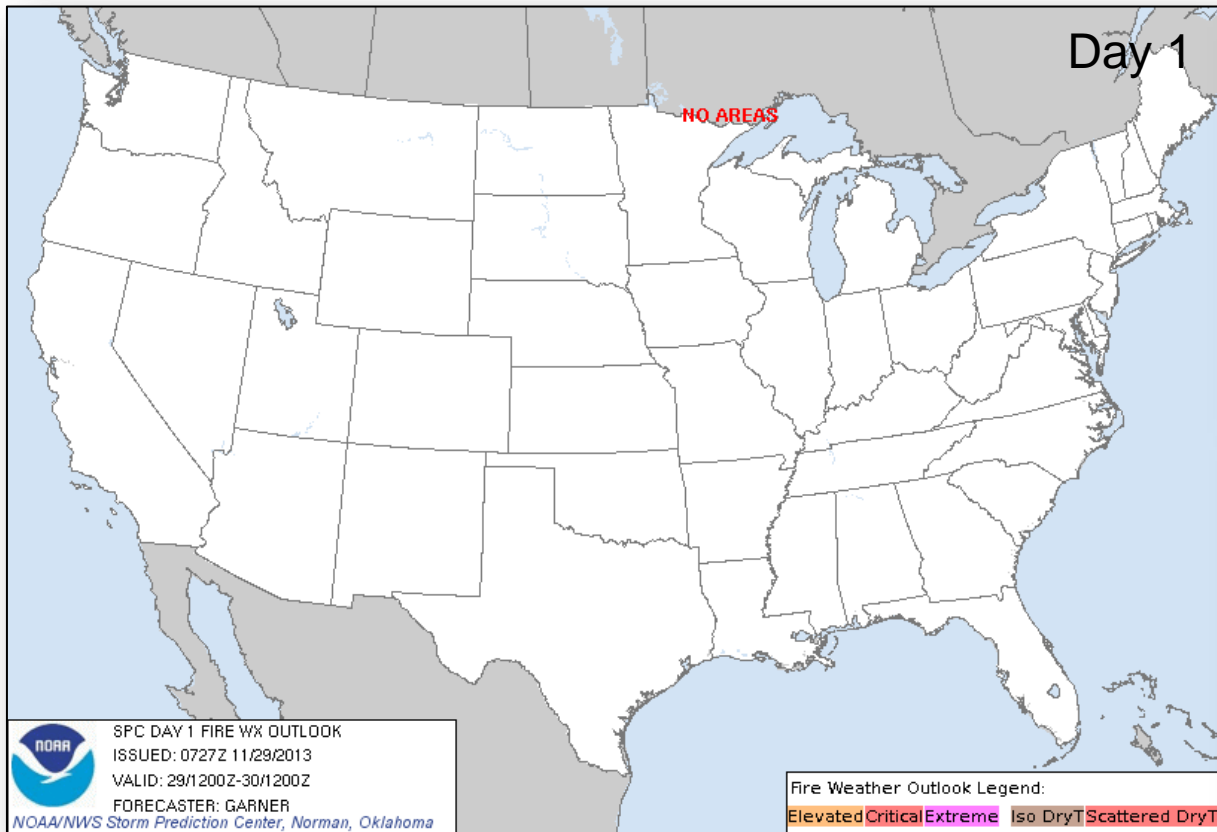
# River Forecast – 7 Day



# Convective Outlooks Days 1 – 3

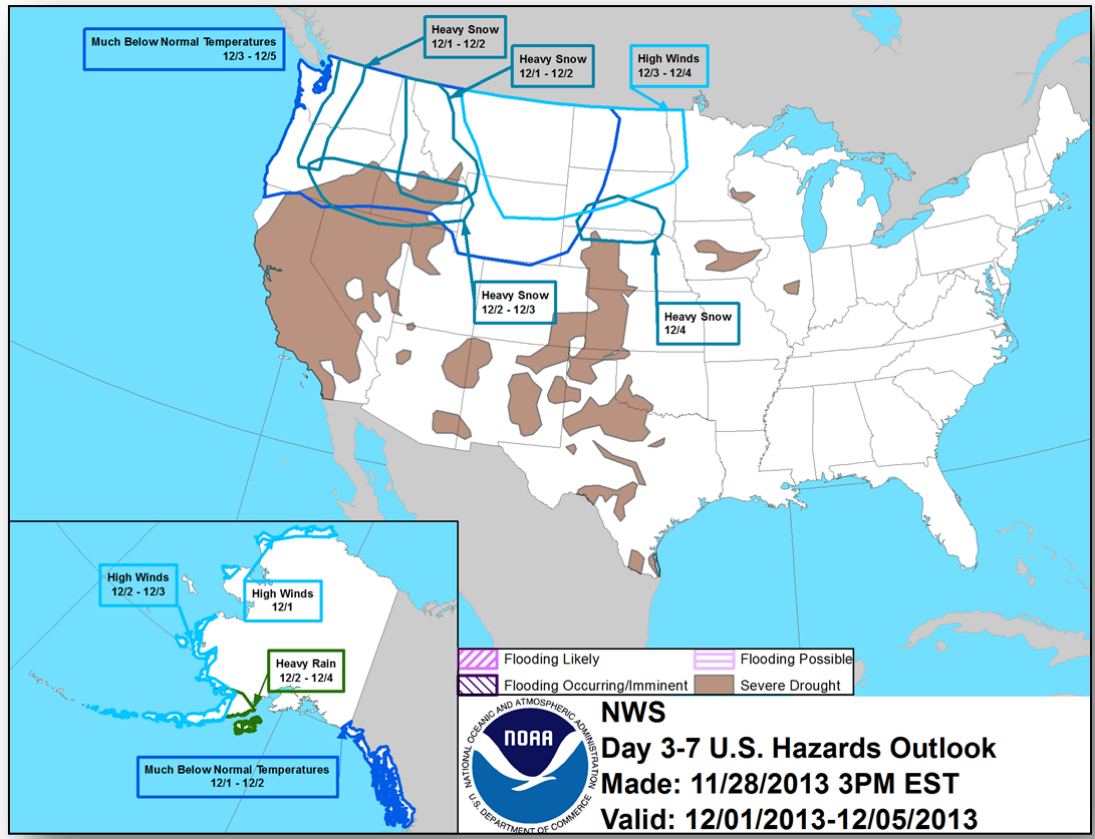


# Critical Fire Weather Areas Days 1 – 8





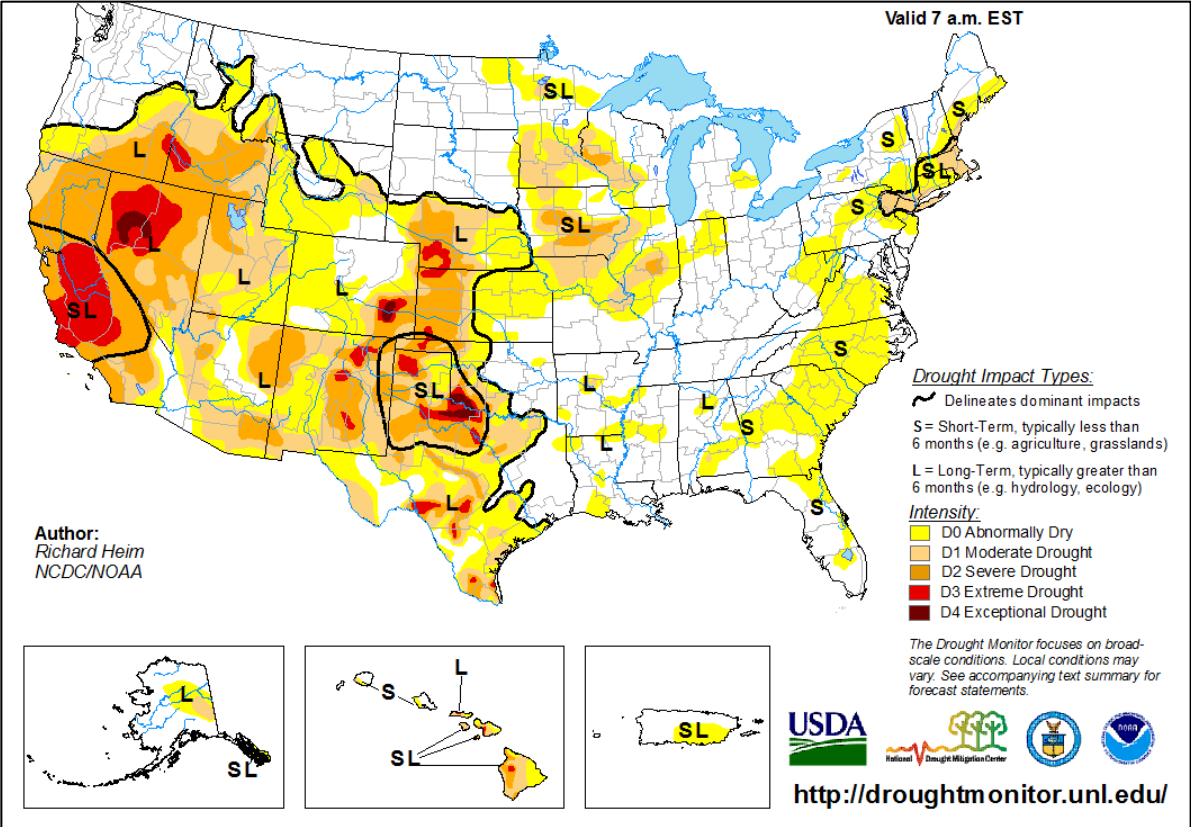
# Hazard Outlook: Dec 1 - 5



# U.S. Drought Monitor – as of November 26

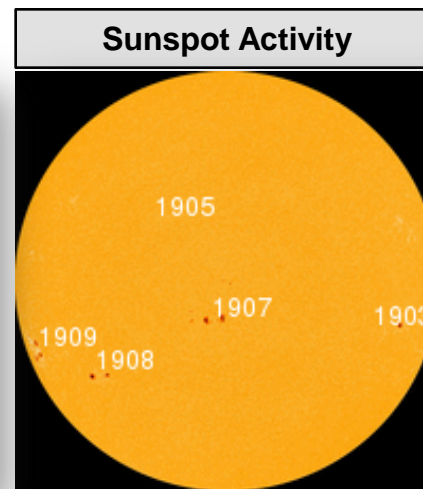
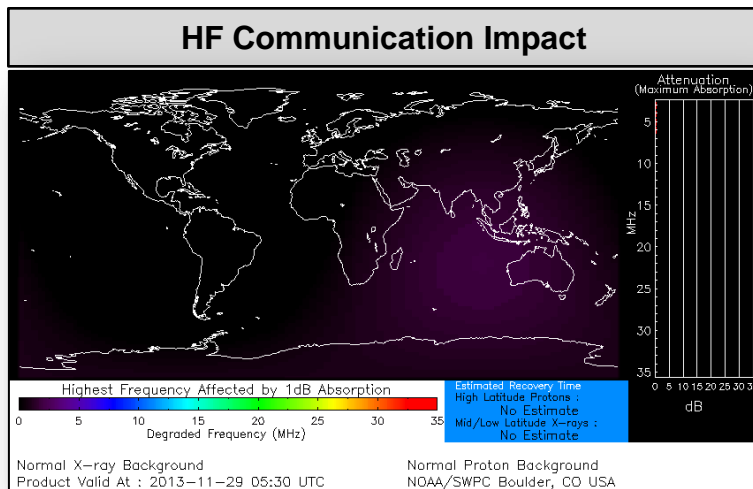


FEMA



# Space Weather

NOAA Scales Activity (Range: 1/minor to 5/extreme)	Past 24 Hours	Current	Next 24 Hours
Space Weather Activity:	None	None	None
• Geomagnetic Storms	None	None	None
• Solar Radiation Storms	None	None	None
• Radio Blackouts	None	None	None



# Disaster Requests & Declarations



<b>Declaration Requests in Process</b>		<b>Requests APPROVED (since last report)</b>	<b>Requests DENIED (since last report)</b>
<b>1</b>	<b>Date Requested</b>	<b>0</b>	<b>0</b>
<b>Rosebud Sioux Tribe – DR (Appeal) Severe Storms, Straight-line Winds, and Flooding</b>	<b>October 29, 2013</b>		

# Disaster Amendments



Amendment	Effective Date	Action
Amendment No. 1 FEMA-4152-DR-NM	November 27, 2013	Adds 7 counties, 3 pueblos, and the Navajo Nation for PA

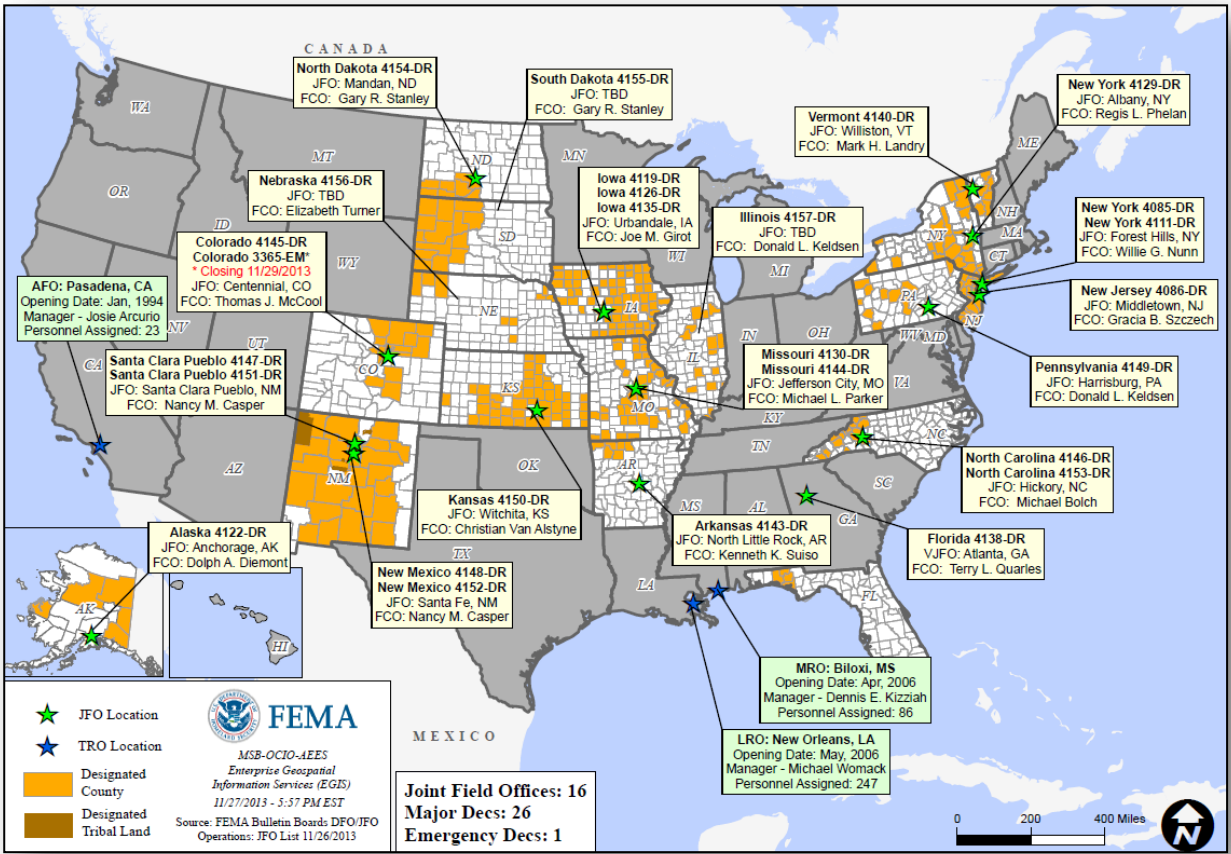


# Joint Preliminary Damage Assessments



Region	State / Location	Event	IA/PA	Number of Counties		Start – End
				Requested	Complete	
V	IL	Severe Storms and Tornadoes November 17-18, 2013	IA	15	15	11/21-11/24
			PA	15	0	12/2-TBD
V	IN	Severe Storms and Tornadoes November 17-18, 2013	IA	1	1	11/25-11/26

# Open Field Offices as of November 29, 2013



# IMAT Status



National Teams					
Team	Status	Team	Status	Team	Status
Blue/White/Red	Available/Mission Capable	East	Assigned/Deployed (CO)	West	Available/Mission Capable
Regional Teams					
Team	Status	Team	Status	Team	Status
Region I	Available/Mission Capable	Region V	Assigned/Deployed (IL)	Region VIII	Assigned/Deployed (SD)
Region II	Available/Mission Capable	Region VI-1	Available/Mission Capable	Region IX-1	Available/Mission Capable
Region III	Assigned/Deployed (PA)	Region VI-2	Assigned/Deployed (NM)	Region IX-2	Available/Mission Capable
Region IV-1	Available/Mission Capable	Region VII	Assigned/Deployed (KS)	Region X	Not Mission Capable
Region IV-2	Assigned/Deployed (NC)				

= Available/Mission Capable     
  = Assigned/Deployed  
 = Available/Partially Mission Capable     
  = Not Mission Capable

# OFDC Cadre Member Status



## Federal Coordinating Officer

Total	Deployed	Detailed	Not Available	Available	Cadre Status
40	26	1	2	11	
Total Available	Type 1	Type 2	Type 3	Type 4	
11*	1	5	2	3	

\* All Type 1 FCOs are available unless deployed to a Level 1 event

## Federal Disaster Recovery Coordinator

Total	Deployed	Assigned	Available	Status
9	6	4	2	

As of: 11/27/2013

# MCOV Fleet / Deployment Status



MCOV FLEET STATUS						MCOV DISASTER SUPPORT DEPLOYMENTS					
Location	Units Assigned	Available FMC	Deployed Committed	PMC	Unavailable	DR-State	OPCON	En Route	Unit Prep	Open Request	Notes:
MERS Maynard	3	3	0			DR-4145-CO	4				
MERS Frederick	8	8	0								
MERS Thomasville	14	13	1								
DC Ft Worth	20	16	3		1						
MERS Denver	2	2	0								
MERS Bothell	4	4	0								
Sacramento	4	4	0								
<b>TOTAL</b>	<b>55</b>	<b>50</b>	<b>4</b>	<b>0</b>	<b>1</b>	<b>TOTAL</b>	<b>4</b>	<b>0</b>	<b>0</b>	<b>0</b>	
Units in route for turn-in included in above totals.											

Fully Mission Capable	<b>54</b>
Partially Mission Capable	0
Non-Mission Capable	1
<b>Total Not Deployed</b>	<b>51</b>



# Urban Search & Rescue



INCIDENT SUPPORT TEAMS (Red-White-Blue) – Monthly On Call Rotation											
JAN	FEB	MAR	APR	MAY	JUN	JUL	AUG	SEP	OCT	NOV	DEC
WEST				CENTRAL				EAST			
Team	Status	Team	Status	Team	Status	Team	Status	Team	Status	Team	Status
CA-TF1	Available	AZ-TF1	Available	FL-TF1	Available	CA-TF2	Available	CO-TF1	Available	FL-TF2	Available
CA-TF3	Available	IN-TF1	Available	MA-TF1	Available	CA-TF4	Available	MO-TF1	Available	MD-TF1	Available
CA-TF5	Available	NE-TF1	Available	NY-TF1	Available	CA-TF6	Available	NM-TF1	Conditional	PA-TF1	Available
CA-TF7	Available	NV-TF1	Conditional	VA-TF1	Available	CA-TF8	Available	TN-TF1	Available	VA-TF2	Available
WA-TF1	Available	TX-TF1	Available	OH-TF1	Available			UT-TF1	Available		

= Available/Mission Capable  
 = Available/Partially Mission Capable

= Assigned/Deployed  
 = Out-of-Service

# RRCC / Regional Watch Center Status



Region	RRCC	Regional Watch Center
I	Not Activated	Maynard MOC (24/7)
II	Not Activated	24/7
III	Not Activated	24/7
IV	Not Activated	24/7
V	Not Activated	24/7
VI	Not Activated	Denton MOC (24/7)
VII	Not Activated	24/7
VIII	Not Activated	Denver MOC (24/7)
IX	Not Activated	24/7
X	Not Activated	Bothell MOC (24/7)

 = Not Mission Capable

 = Available/Partially Mission Capable

 = Available/Mission Capable

# National Team Status



Team/Status	Current Location	Remarks
National Watch Center	Washington, DC	Watch/Steady State
NRCC	Washington, DC	Not Activated
HLT	Miami, FL	Activated
DEST	Washington, DC	Not Activated
Mission Capable	Partially Mission Capable	Not Mission Capable



# FEMA

**FEMA's mission is to support our citizens and first responders to ensure that as a nation we work together to build, sustain, and improve our capability to prepare for, protect against, respond to, recover from, and mitigate all hazards.**