



FEMA

Daily Operations Briefing

Sunday, May 18, 2014

8:30 a.m. EDT

Significant Activity: May 17 – 18



Significant Events:

- San Diego County, CA – Fires (San Diego Complex Fire) – FINAL

Significant Weather:

- Slight risk of severe thunderstorms – Northern Plains and GA/FL
- Cooler temperatures for much of the West; warmer temps in the Southern Plains on Monday
- Elevated/Critical Fire Weather – AZ, NM, CO, UT, TX, CA, NV, & OK
- Red Flag Warnings – AK, TX, NM, AZ, OK, & CO
- Space Weather: Past 24 hours: none occurred; next 24 hours: none predicted

Tropical Activity:

- Eastern Pacific – (Low – 20%)

FEMA Readiness: No significant changes

Declaration Activity: No activity

Wildfire Summary

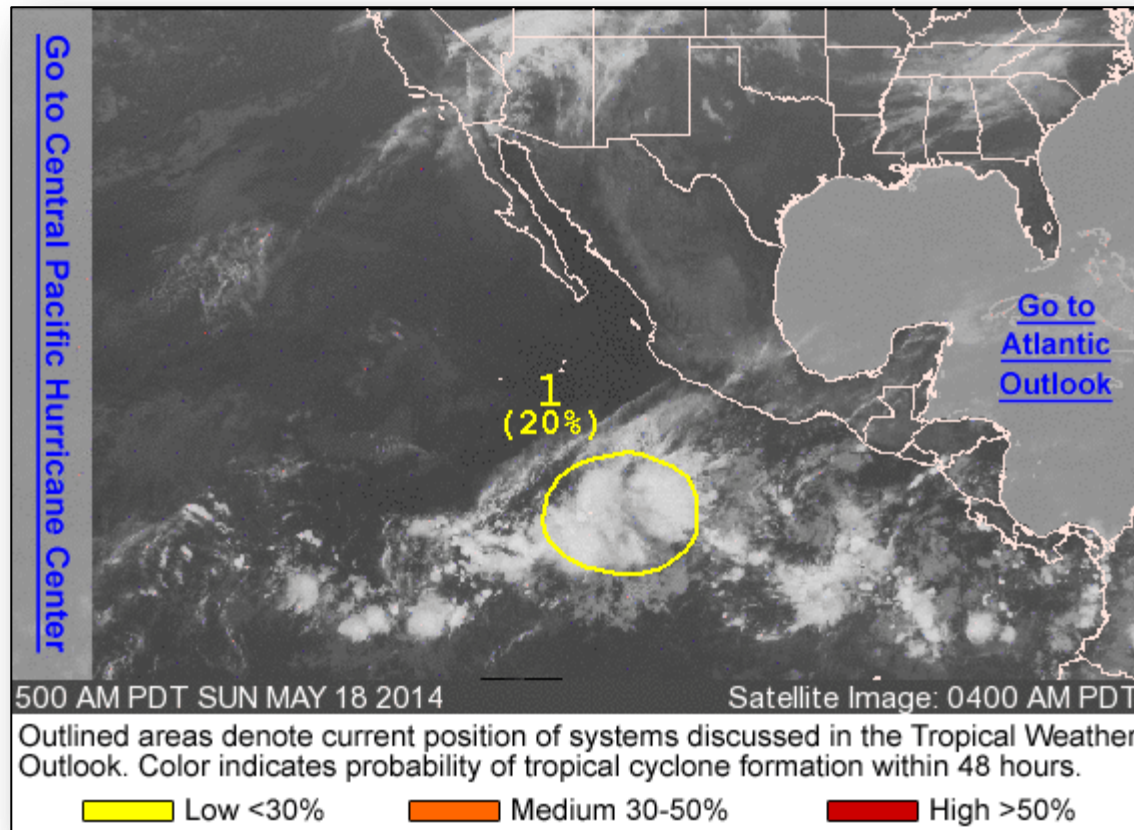


Fire Name (County)	FMAg #	Acres burned	% Contained Est. Containment date	Evacuations (Residents)	Structures Threatened	Structures Destroyed	Fatalities / Injuries
California							
Cocos Fire (San Diego County)	FEMA-5055-FM-CA	2,520 (-498)	80% (+10)	Lifted	N/A	8 (+2)	0/3
Pulgas Fire (San Diego County)	Not Requested	15,000 (+7,000)	40%	Mandatory	N/A	0	0/0
Tomahawk Fire (San Diego County)	Not Requested	6,500 (+200)	93% (+28)	Lifted	N/A	0	0/0
New Mexico							
Signal (Grant County)	Not Requested	5,740	60%(+5)	0	6	0	0/4 (+1)

Eastern Pacific – Tropical Outlook



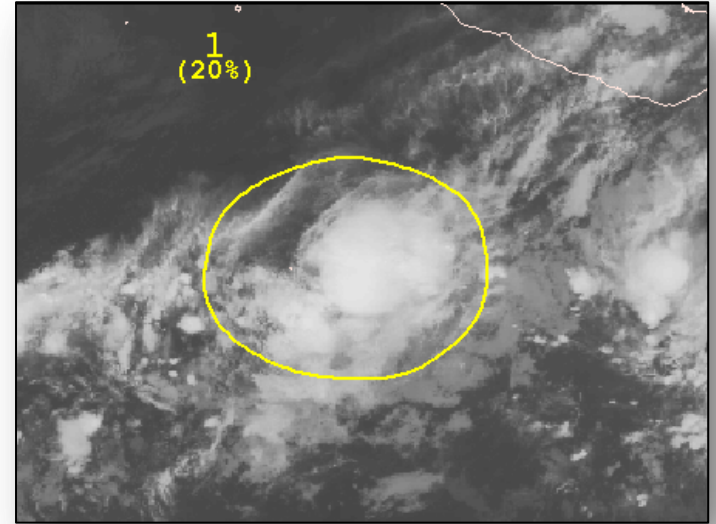
FEMA



Eastern Pacific – Area 1

As of 8:00 a.m. EDT May 18

- Low pressure located several hundred miles SW of Acapulco, Mexico, producing large area of showers and thunderstorms
- Slow development next couple
- Low (20%) chance of becoming a Tropical Cyclone during the next 48 hours
- Low (20%) chance of becoming a Tropical Cyclone during the next 5 days



Joint Preliminary Damage Assessments



FEMA

Region	State / Location	Event	IA/PA	Number of Counties		Start – End
				Requested	Complete	
IV	FL	Severe Weather, Straight-line Winds, Lightning & Flooding April 25, 2014	IA	9	5	5/1 – TBD
			PA	9	8	5/1 – TBD
VII	MO	Severe Weather May 14, 2014	IA	2	0	5/16 – TBD
			PA	1	0	5/16 – TBD
VII	NE	Severe Storms May 14, 2014	PA	10	0	5/19 – TBD

Disaster Requests & Declarations

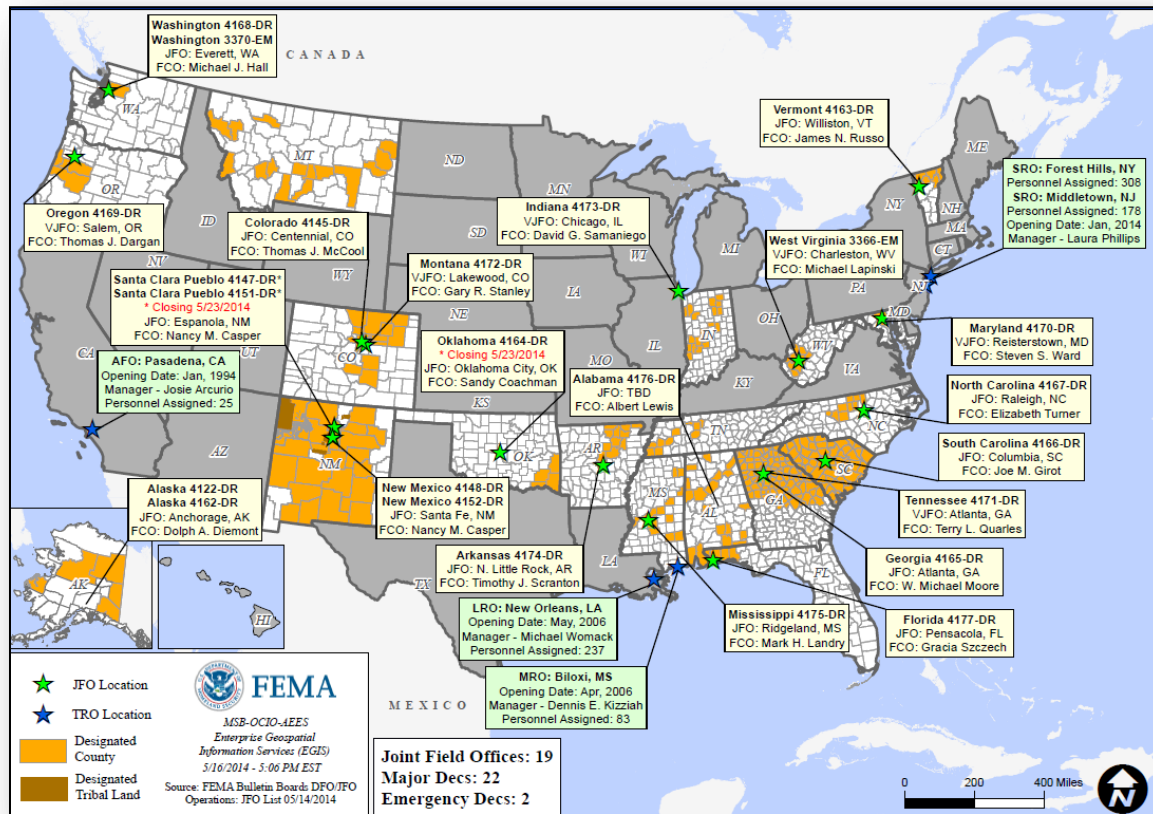


Declaration Requests in Process		Requests APPROVED (since last report)	Requests DENIED (since last report)
1	Date Requested	0	0
WV – DR (Appeal) Chemical Spill	May 8, 2014		

Open Field Offices as of May 18, 2014



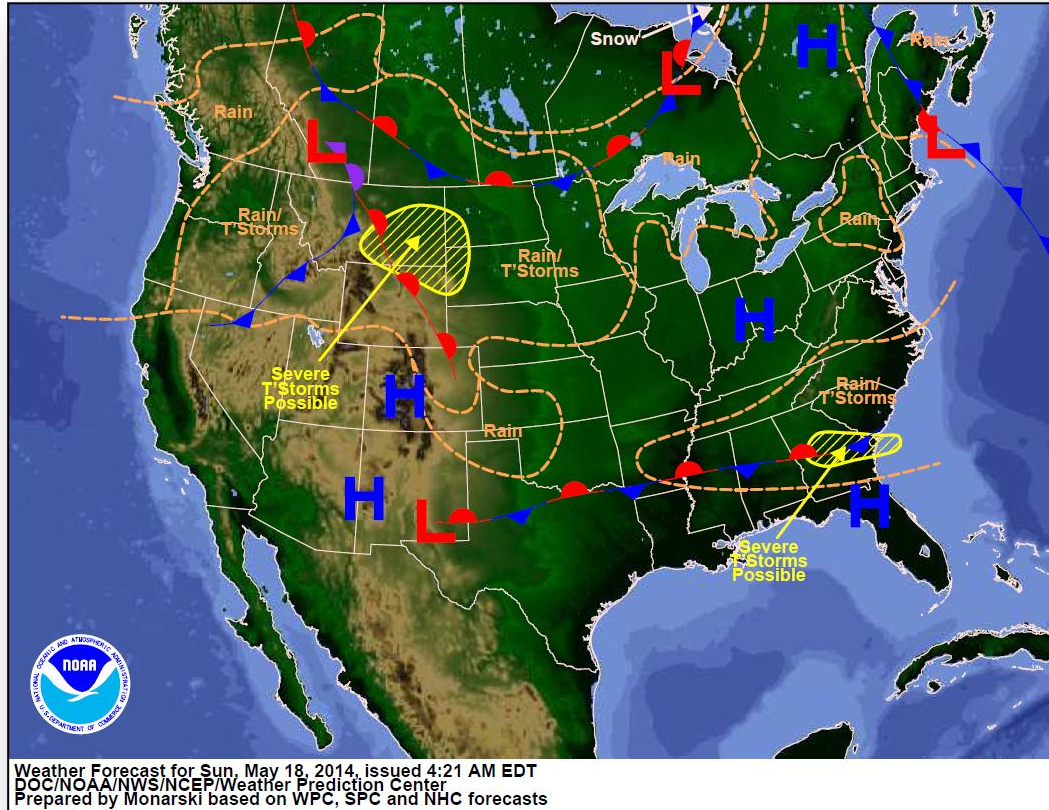
FEMA



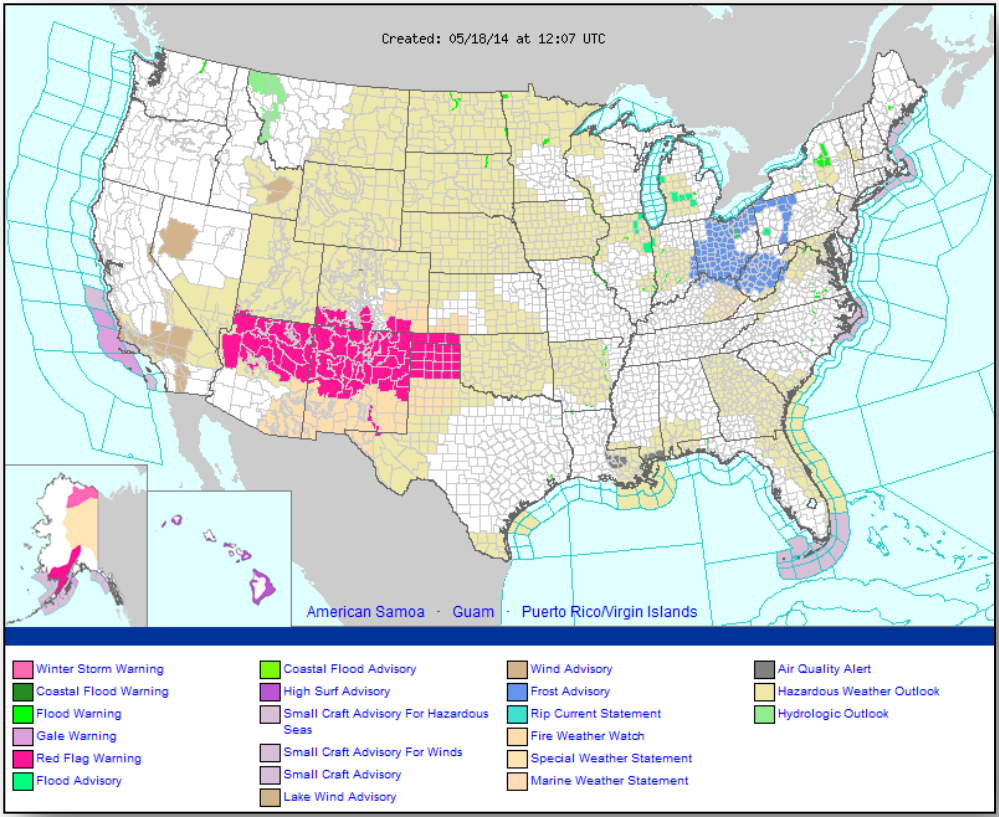
National Weather Forecast



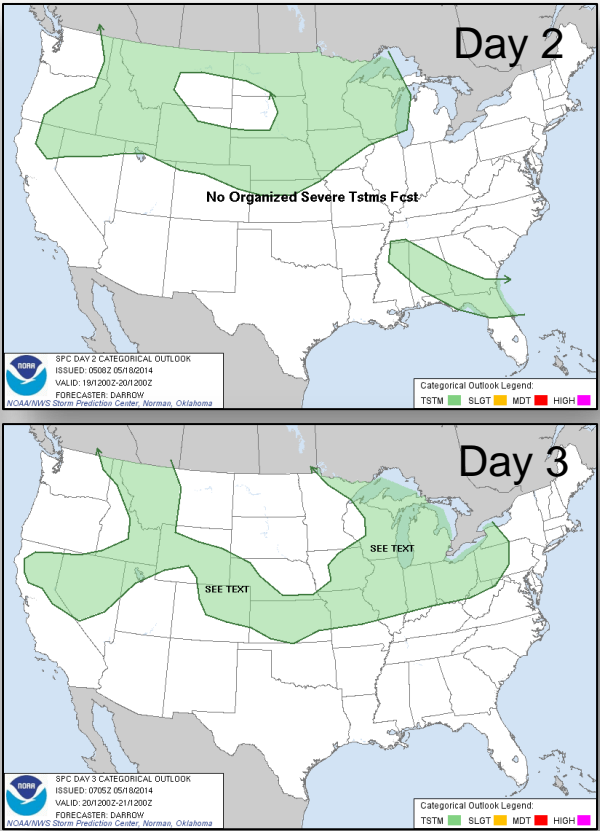
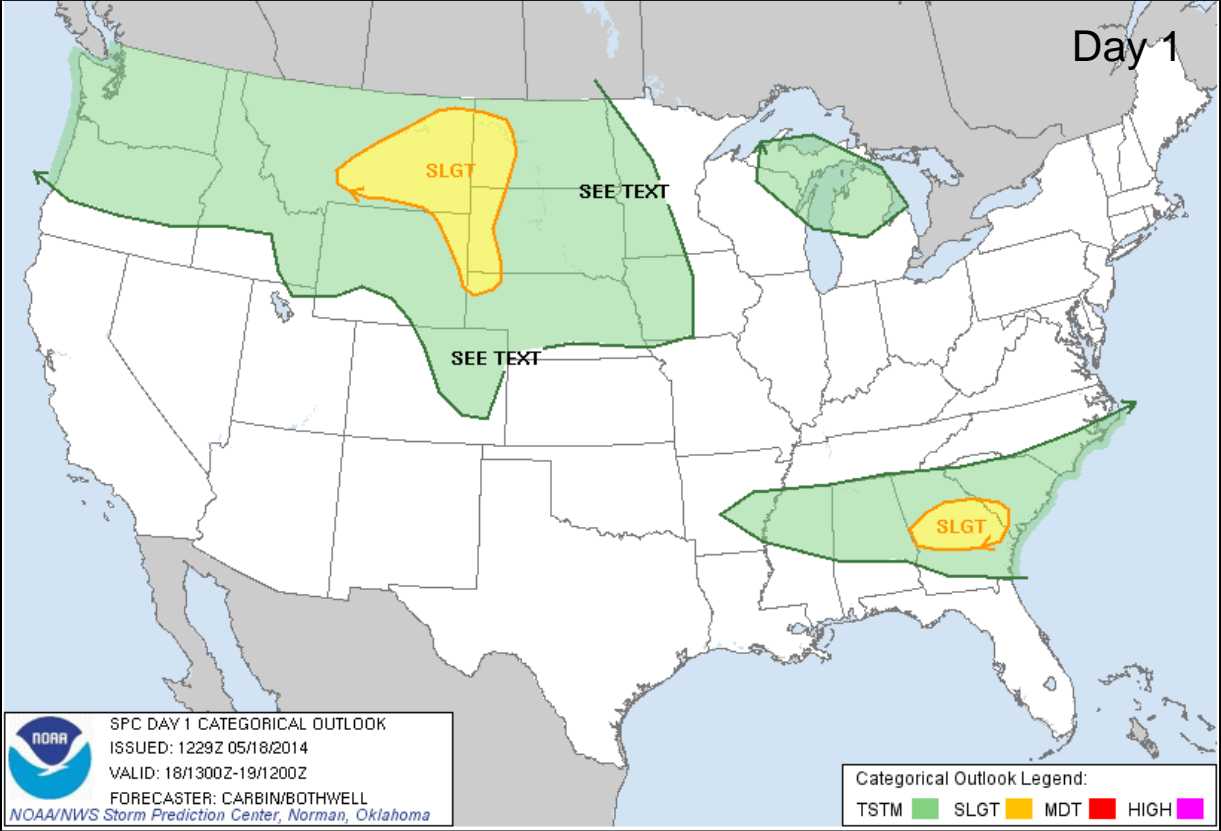
FEMA



Active Watches/Warnings



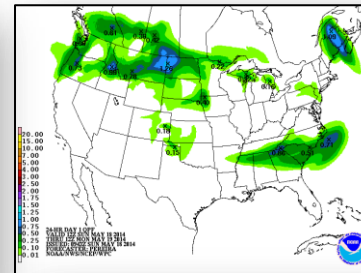
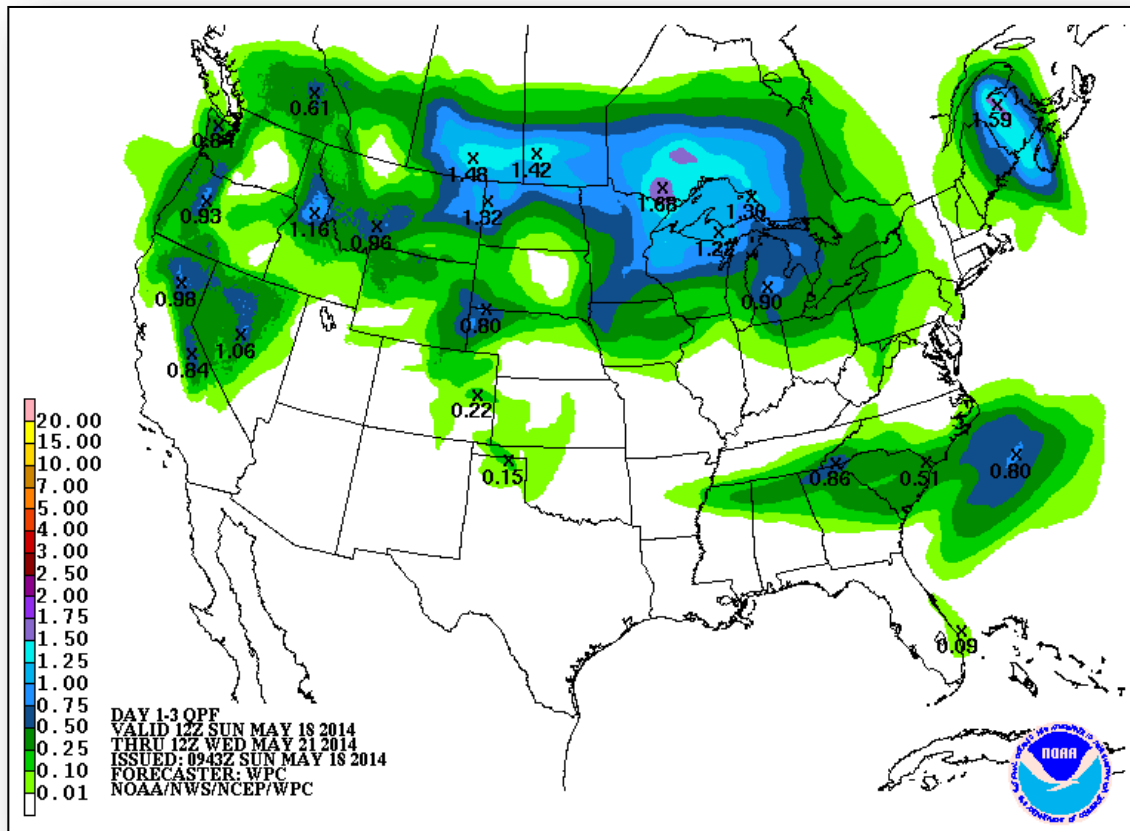
Convective Outlook – Day 1 – 3



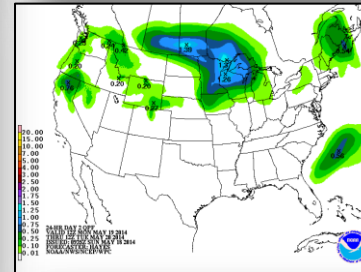


FEMA

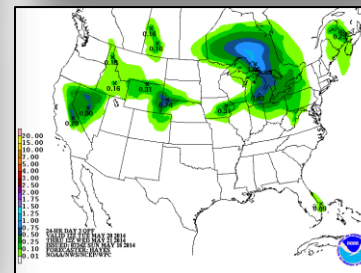
Precipitation Forecast – 3 Day



Day 1



Day 2

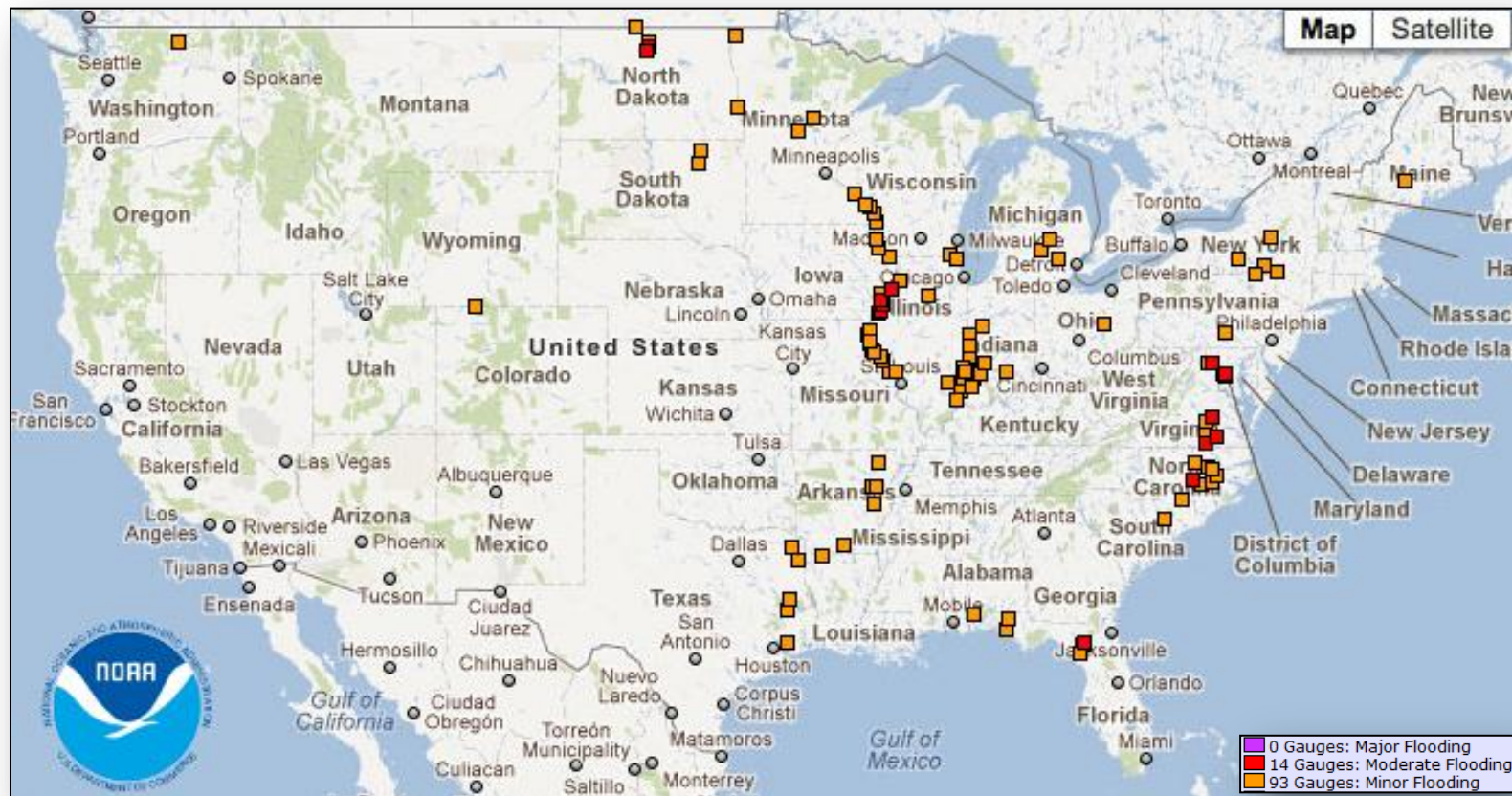


Day 3

River Forecast



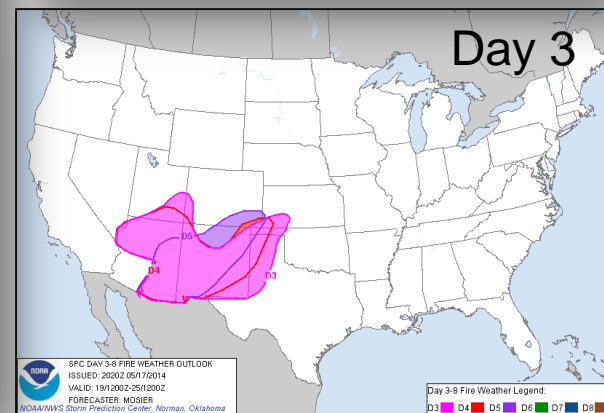
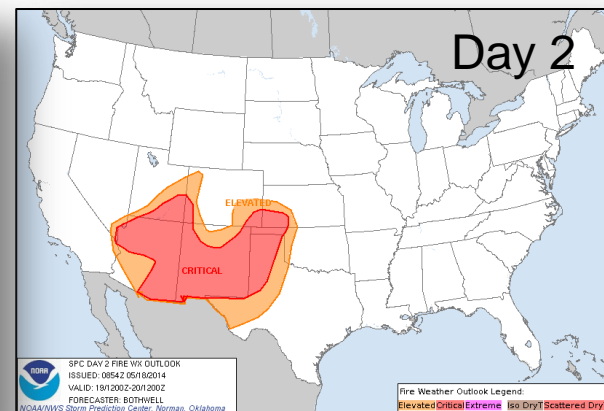
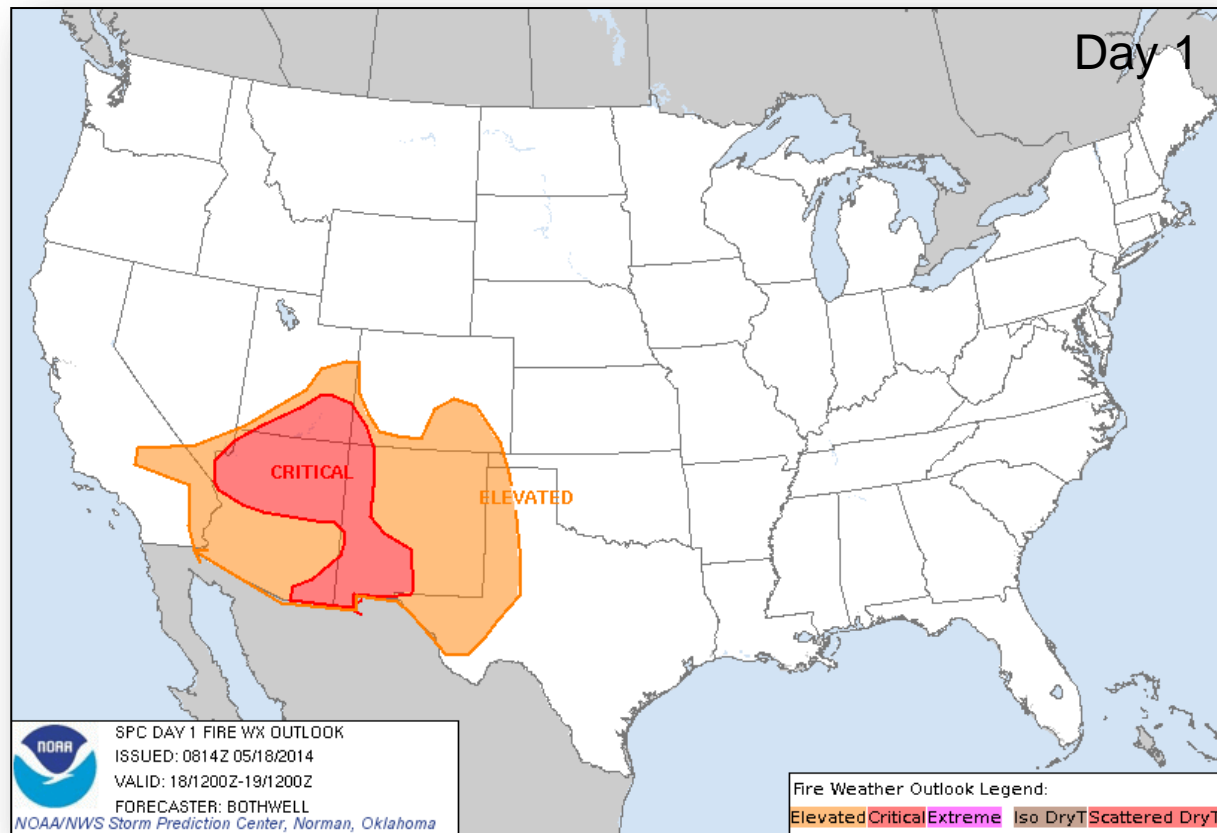
FEMA



Critical Fire Weather Areas – Days 1 – 8



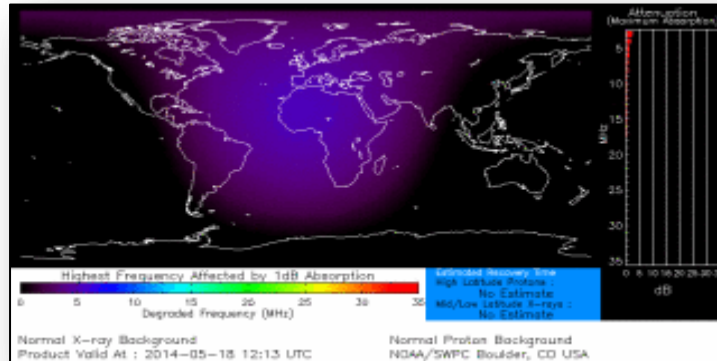
FEMA



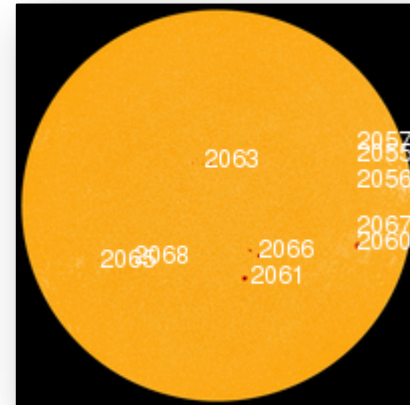
Space Weather

NOAA Scales Activity (Range: 1/minor to 5/extreme)	Past 24 Hours	Current	Next 24 Hours
Space Weather Activity:	None	None	None
• Geomagnetic Storms	None	None	None
• Solar Radiation Storms	None	None	None
• Radio Blackouts	None	None	None

HF Communication Impact



Sunspot Activity



FEMA Readiness – Deployable Teams/Assets



Deployable Teams/Assets									
Resource	Status	Total	Available		Partially Available	Not Available	Deployed Activated	Comments	Rating Criterion
FCO		39	12	31%	0	1	26*	* 4 “detailed” included in Deployed/Activated column	OFDC Readiness: FCO Green Yellow Red Type 1 3+ 2 1 Type 2 4+ 3 2 Type 3 4 3 2 <u>FDRC</u> 3 2 1
FDRC		9	6	56%	0	0	3		
US&R		28	25	89%	2	1	0	<ul style="list-style-type: none">NM-TF1 (Yellow – Conditional)WA-TF1 (Yellow – Conditional) until 5/30CA TF-8 (San Diego) OOS (RED-Indefinitely)	<ul style="list-style-type: none">Green = Available/FMCYellow = Available/PMCRed = Out-of-ServiceBlue = Assigned/Deployed
National IMAT		3	2	67%	0	0	1	<ul style="list-style-type: none">IMAT East deployed to FL	<ul style="list-style-type: none">Green: 3 availYellow: 1 availRed: 0 avail (<i>Individual N-IMAT red if 50% of Section Chiefs and/or Team Leader is unavailable for deployment.</i>)
Regional IMAT		13	3	23%	1	3	6	<ul style="list-style-type: none">Region I deployed to ALRegion IV deployed to NC & MSRegion VI deployed to OK & ARRegion X deployed to WARegion II Partially Mission Capable (Team I) <u>Not Mission Capable:</u> <ul style="list-style-type: none">Region V, VII, IX for Personnel shortages	<ul style="list-style-type: none">Green: 7 or more availYellow: 4 - 6 teams availableRed: > 8 teams deployed/unavailable<i>R-IMAT also red if TL Ops/Log Chief is unavailable and has no qualified replacement.</i>
MCOV		55	39	73%	0	4	12	<ul style="list-style-type: none">4 deployed to 4174-AR6 deployed to 4175-MS2 deployed 4176-AL	<ul style="list-style-type: none">Green = 80 – 100% availYellow = 60 – 79% availRed = 59% or below availReadiness remains 95%

FEMA Readiness – National/Regional Teams



National/Regional Teams									
Resource	Status	Total	Available		Partially Available	Not Available	Deployed/ Activated	Comments	Rating Criterion
NWC		5	5	100%	0	0	24/7		• Green = FMC • Yellow = PMC • Red = NMC
NRCC		2	393	94%	0	23	Not Activated		
HLT		1	1	100%	0	0	Not Activated		
DEST							Not Activated		
RRCCs		10	10	100%	0	0	Not Activated		
RWCs/MOCs		10	10	100%	0	0	24/7		



FEMA

FEMA's mission is to support our citizens and first responders to ensure that as a nation we work together to build, sustain, and improve our capability to prepare for, protect against, respond to, recover from, and mitigate all hazards.