



# **FEMA**

## **Daily Operations Briefing**

**Saturday, May 24, 2014**

**8:30 a.m. EDT**

# Significant Activity: May 23 – 24



## **Significant Events:**

- Chemical Plant Fire – Georgia (FINAL)
- Slide Fire – Arizona

## **Significant Weather:**

- Slight risk of severe thunderstorms & flash flooding – Southern High Plains
- Heavy rain – western Texas & eastern Kansas
- Elevated/Critical Fire Weather areas – none
- Red Flag Warnings – none
- Space Weather: Past 24 hours: Minor/G1; next 24 hours: none predicted

## **Tropical Activity:**

- Eastern Pacific – Tropical Storm Amanda

**FEMA Readiness:** No significant changes

**Declaration Activity:** Amendment #1 to FEMA-4173-DR-IN

# Chemical Plant Fire – Marietta, GA (Final)



FEMA

## Situation

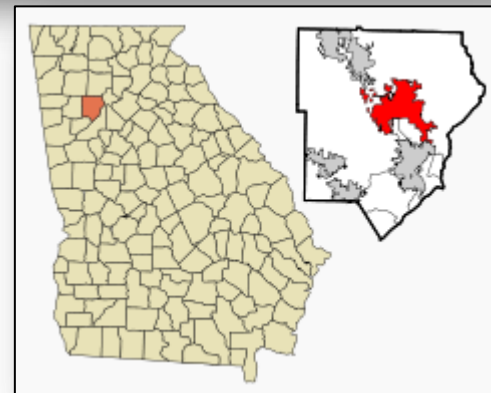
- On May 23 at 8:30 pm EDT, a fire occurred at a chemical plant, Amrep Inc., located in a industrial area in Marietta, Georgia (pop. 56K)
- Initial reports identified a potential chemical fire; however, the Marietta County Public Information Officer reports the fire did not involve hazardous/toxic materials and is not being treated as a chemical fire
- The fire was extinguished early Saturday morning

## Impacts

- Approx. 200 people from local businesses evacuated
- Portions of Cobb Parkway closed; however, will reopen this morning
- Open source reports 1 business damaged
- No injuries or fatalities reported; no shelters open

## Response

- GA Dept. of EPA was on scene for precautionary measures
- IMAAC activated & developed Plume Models; deactivated this morning
- GA State EOC remains at Normal Operations
- FEMA Region IV is at Watch/Steady State
- No unmet needs reported; no requests for FEMA assistance



# Slide Fire – Arizona



FEMA

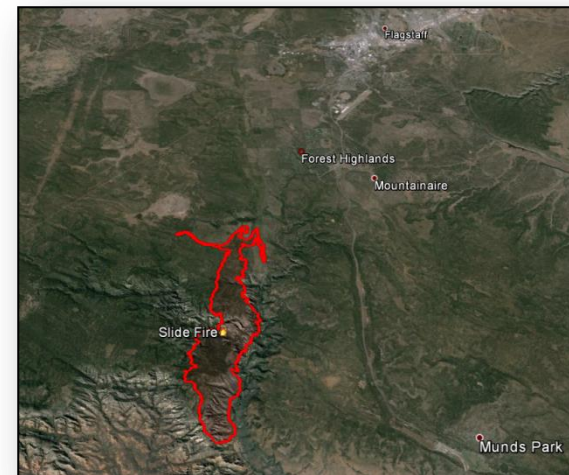
Fire Name	Location	Acres burned	% Contained	Est. Full Containment	FMAG	Structures Lost / Threatened	Fatalities / Injuries
Slide Fire	Sedona, AZ (Coconino County)	8,500 (+1,000)	5%	N/A	Request Denied 5/21	0 / 350	0 / 0

## Situation

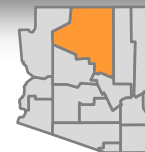
- Began May 20 near Slide Rock State Park in Oak Creek Canyon
- Burning almost entirely on Federal land, 5 miles N of Sedona (pop. 10k)
- 350 structures threatened (homes, businesses & outbuildings)
- Evacuations remain in place for approx. 250 residents
- No injuries or fatalities reported
- ▲ 1 Shelter open with 9 occupants *(NSS as of 4:30 a.m. EDT, May 24)*

## Response

- AZ State EOC is at Normal Operations
- 840 personnel supporting the firefight; Type 1 IMT
- FEMA Region IX remains at Watch/Steady State
- FMAG request was denied on May 21



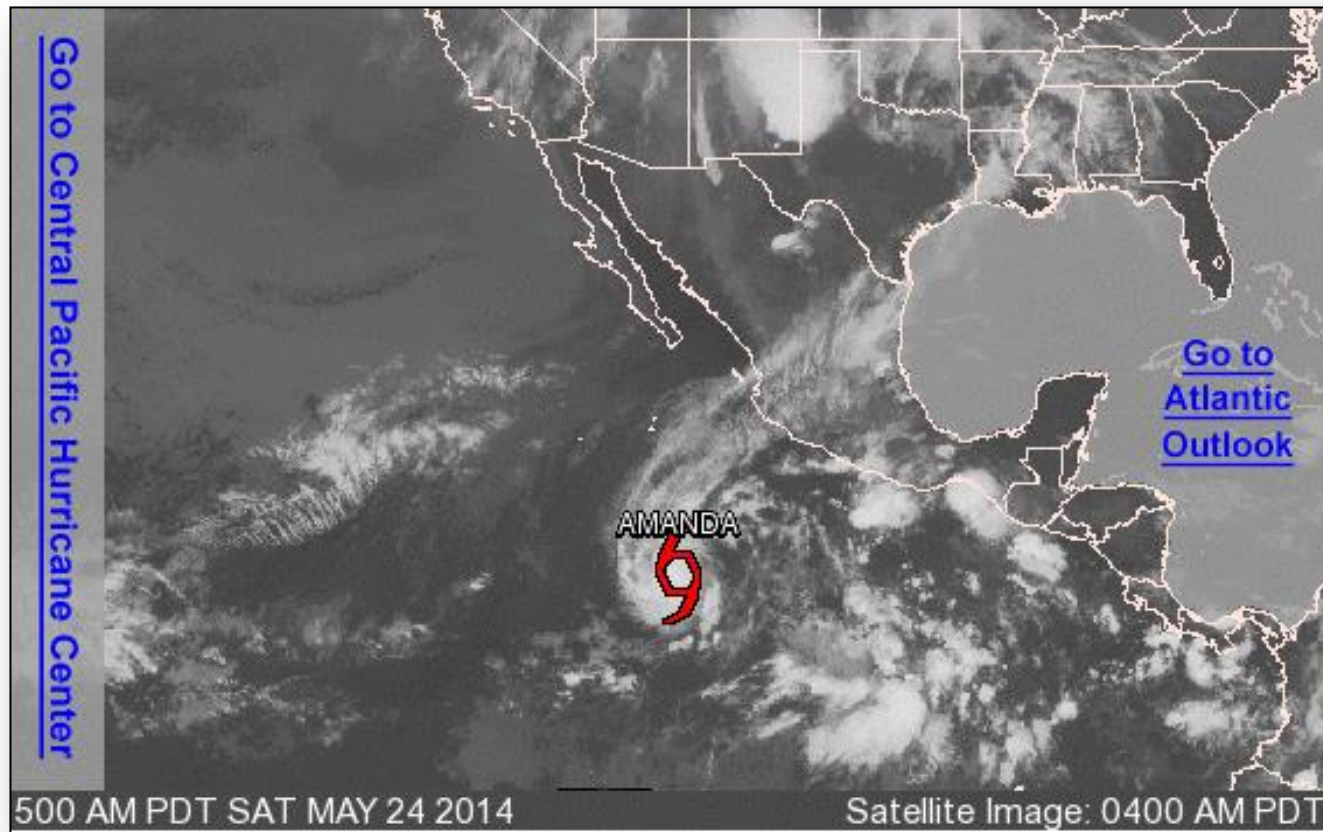
Coconino County



# Eastern Pacific – Tropical Outlook



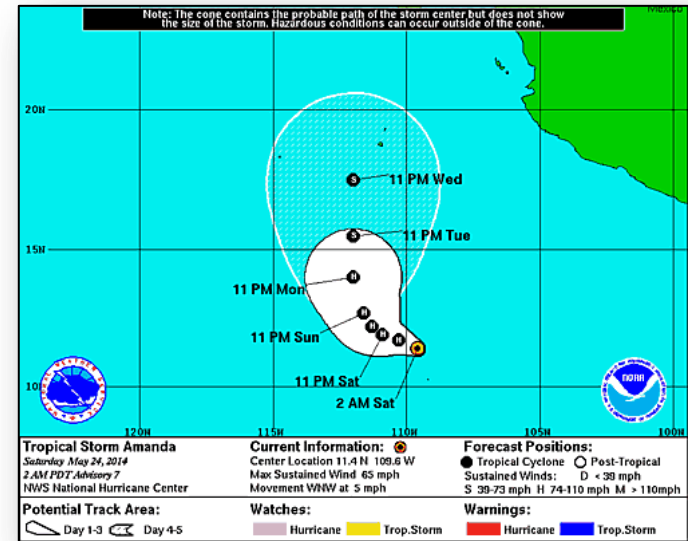
FEMA



# Eastern Pacific – Tropical Storm Amanda

## As of 5:00 a.m. EDT, May 24

- Center of Tropical Storm Amanda was located 630 miles SW of Manzanillo Mexico
- Maximum sustained winds of 65 mph
- Moving slowly WNW at 5 mph
- Additional strengthening forecast during the next 48 hours
- Expected to become a hurricane today
- No coastal watches or warnings in effect



# Disaster Requests & Declarations



Declaration Requests in Process		Requests APPROVED (since last report)	Requests DENIED (since last report)
2	Date Requested	0	0
NH – DR Severe Storms and Flooding	May 21, 2014		
VT – DR Flooding	May 21, 2014		

# Disaster Amendments



Amendment	Effective Date	Action
Amendment No. 1 to FEMA-4173-DR-IN	May 23, 2014	Adds 9 counties for Public Assistance Adds 8 counties for snow assistance under Public Assistance



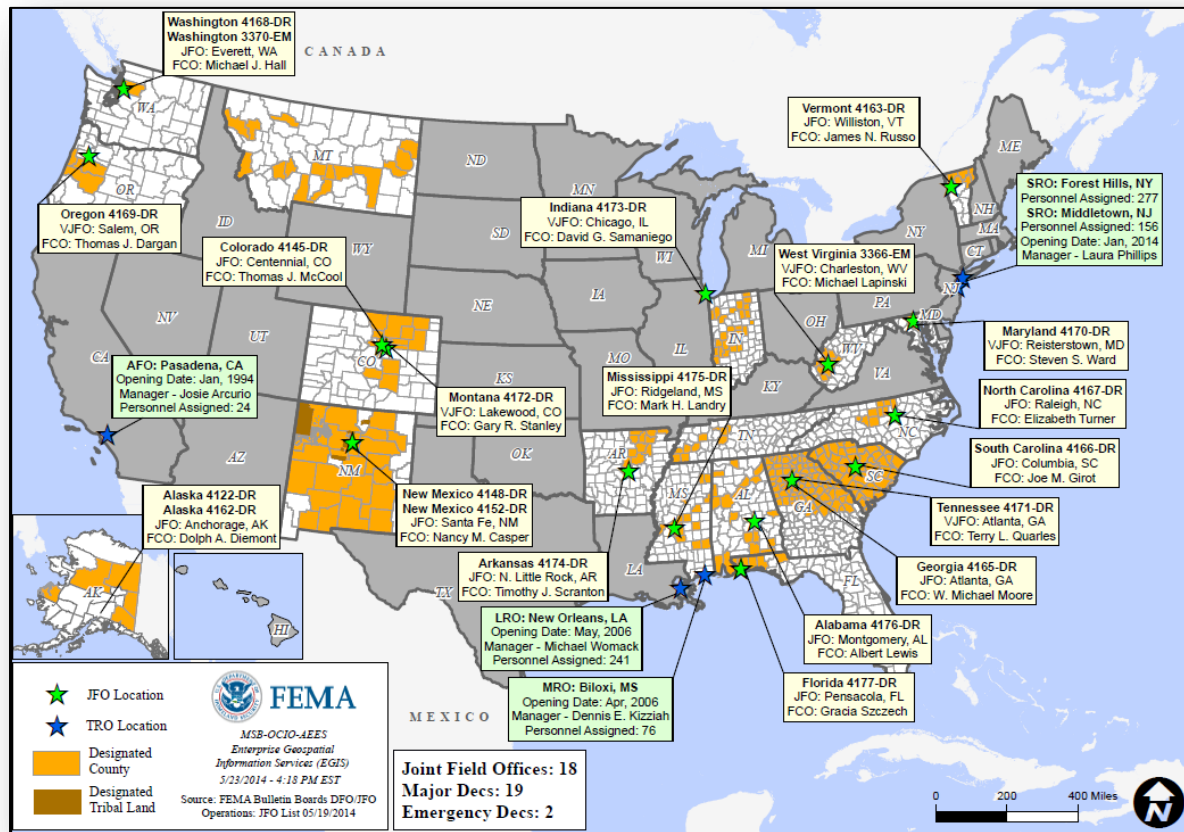
# Joint Preliminary Damage Assessments



FEMA

Region	State / Location	Event	IA/PA	Number of Counties		Start – End
				Requested	Complete	
IV	AL	Severe Storms, Tornadoes, Straight-line Winds & Flooding April 28 – May 5	PA	20	18 (+18)	5/23 – TBD
VII	NE	Severe Storms May 14, 2014	PA	6	5 (+2)	5/19 – TBD

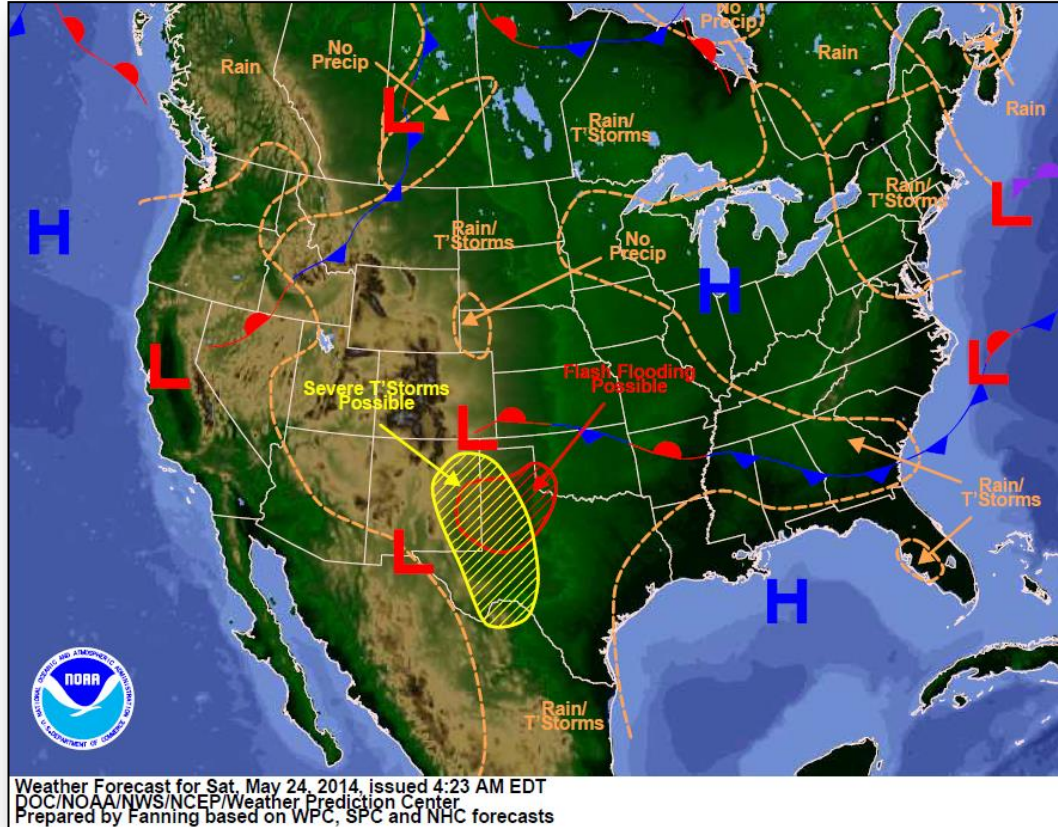
# Open Field Offices as of May 24, 2014



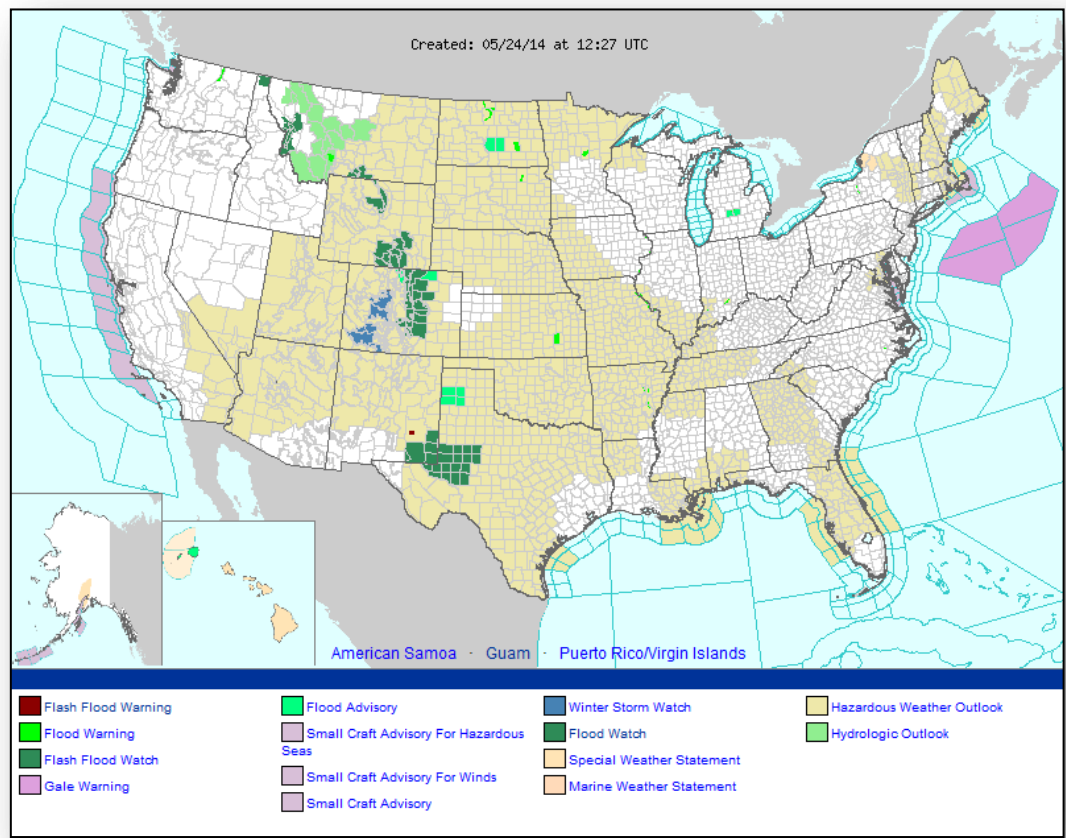
# National Weather Forecast



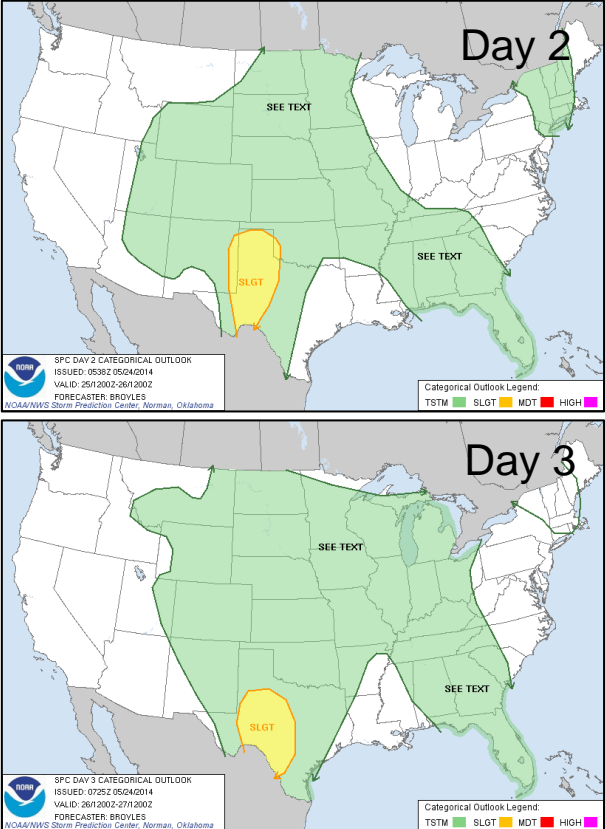
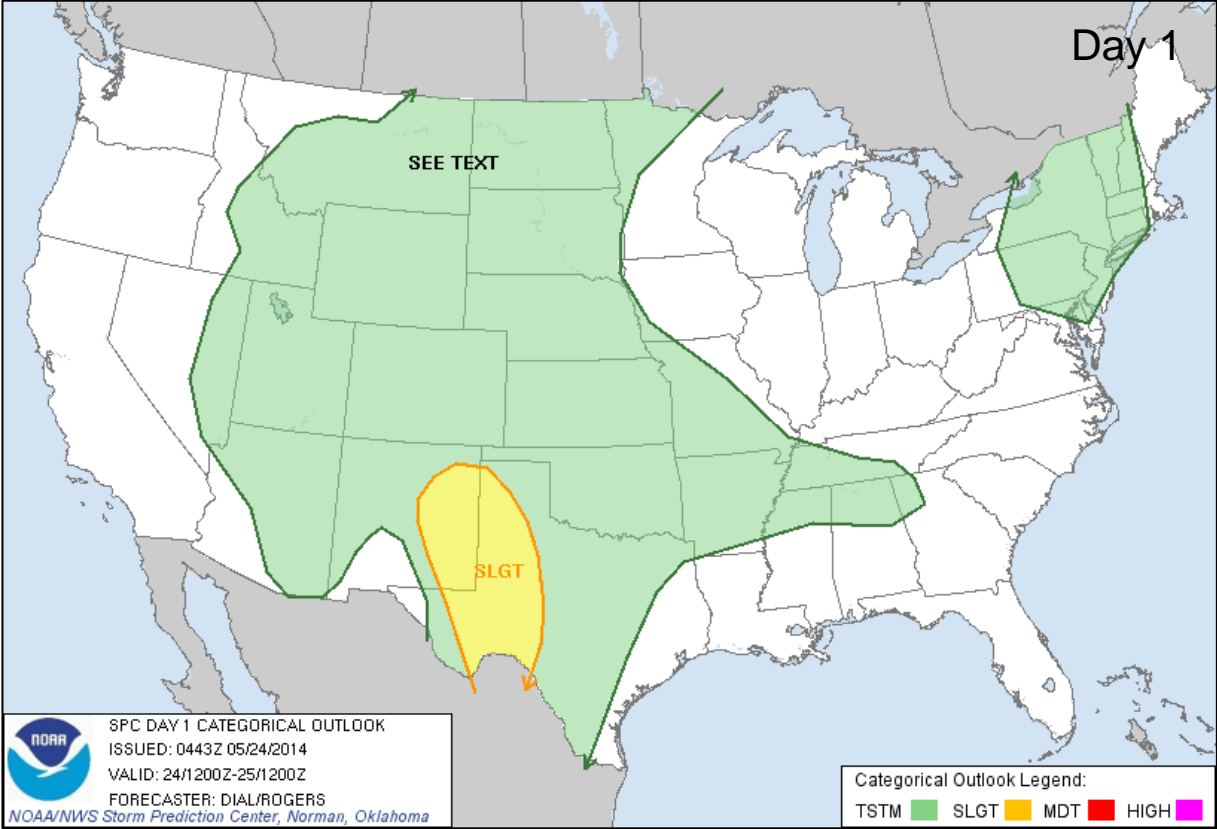
FEMA



# Active Watches/Warnings



# Convective Outlook – Day 1 – 3

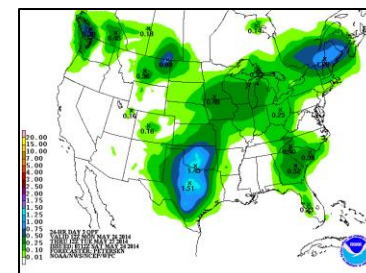
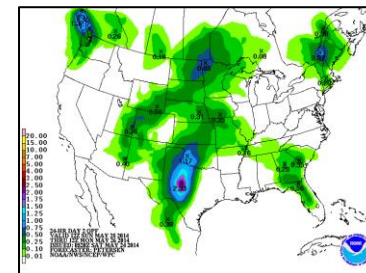
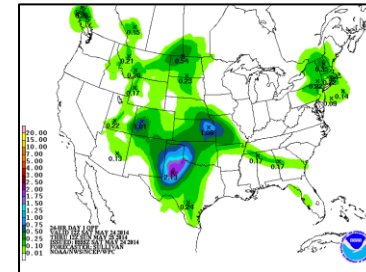
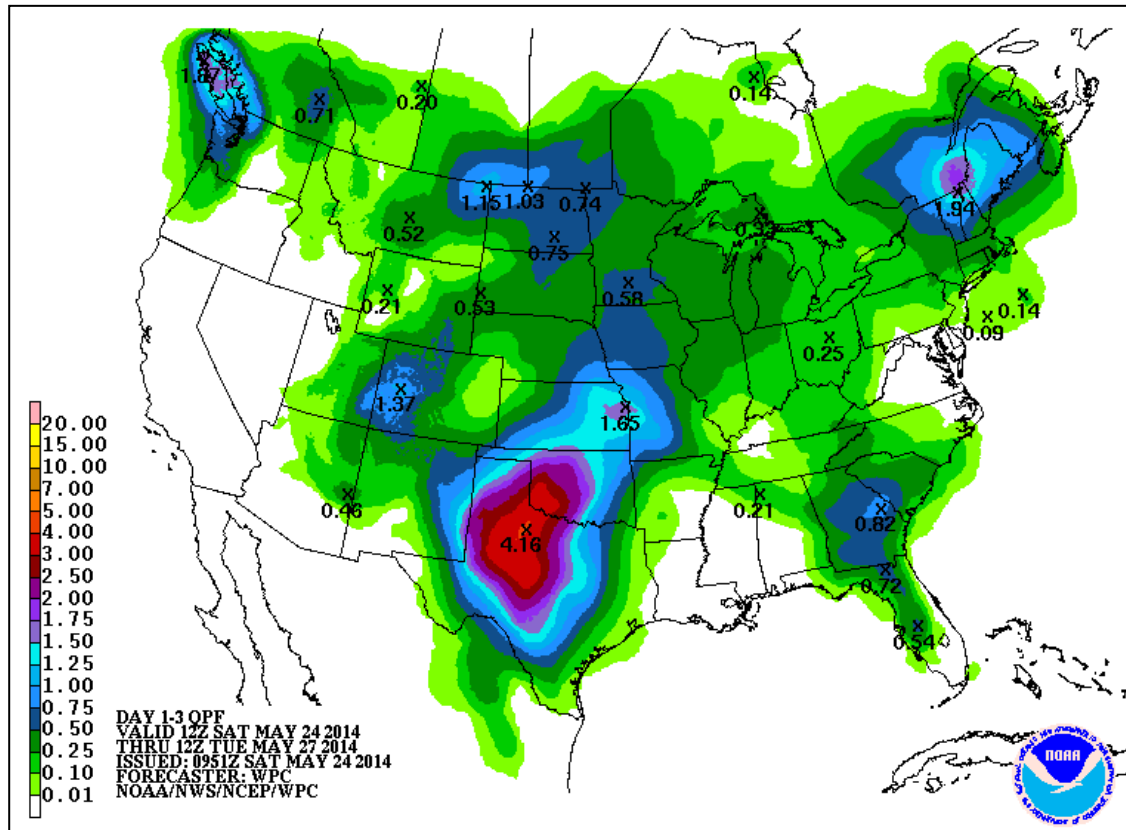






FEMA

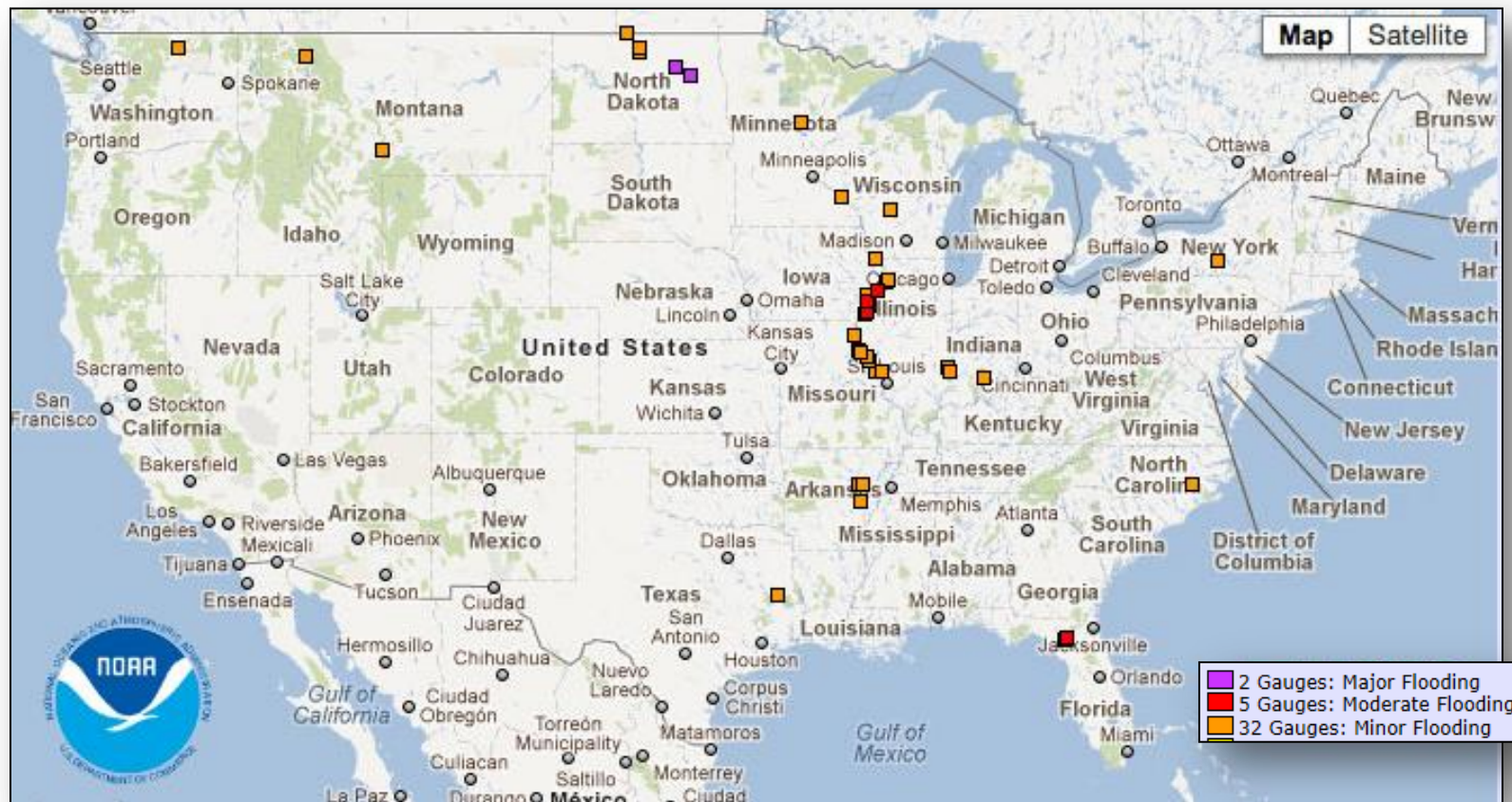
# Precipitation Forecast – 3 Day



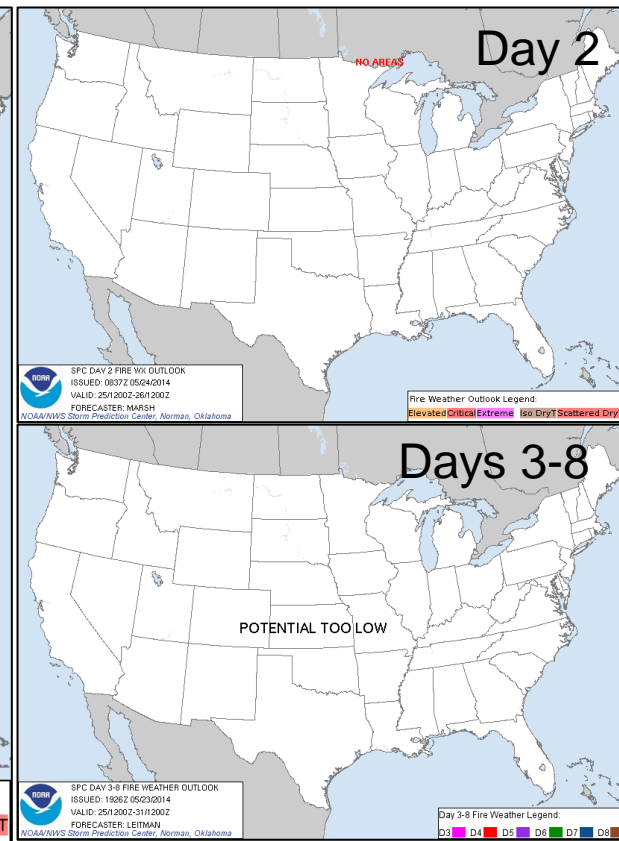
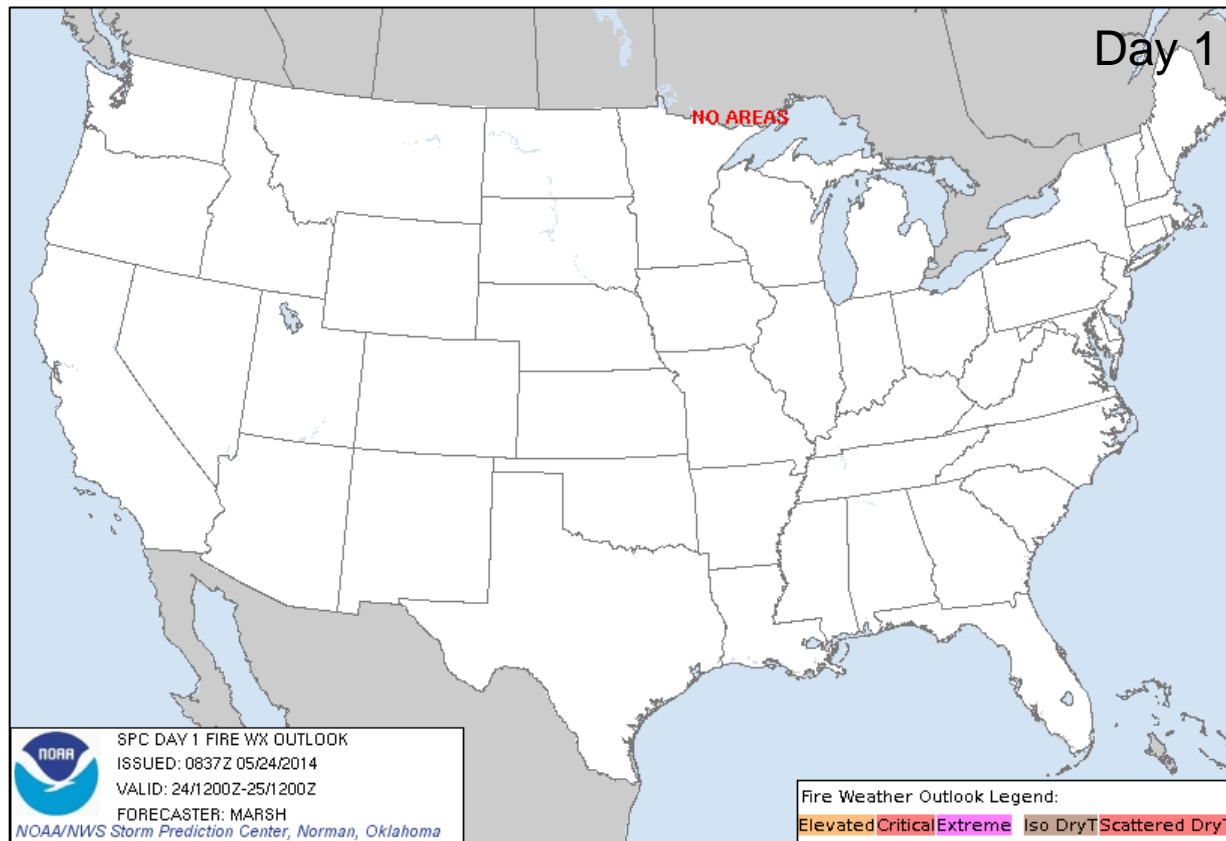
# River Forecast



FEMA



# Critical Fire Weather Areas – Days 1 – 8

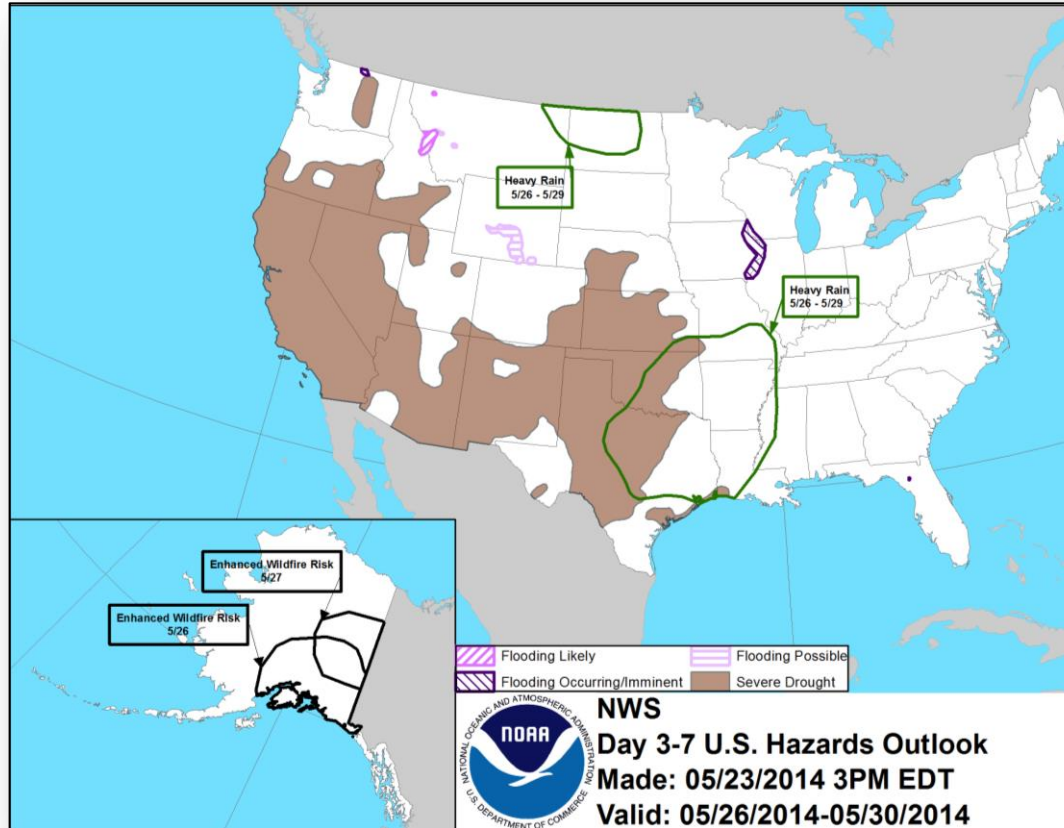




# Hazard Outlook: May 26 – 30



FEMA



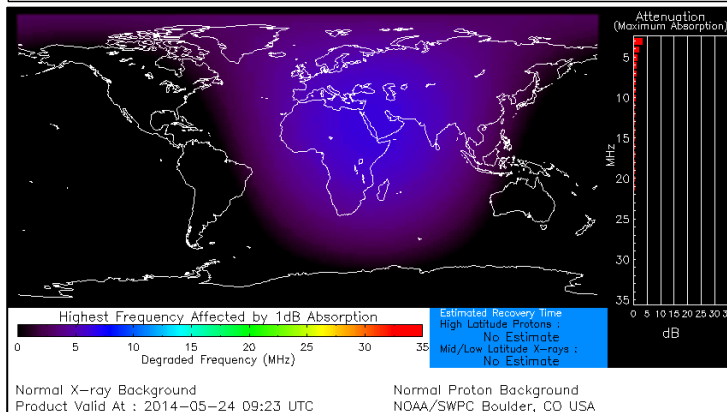
# Space Weather



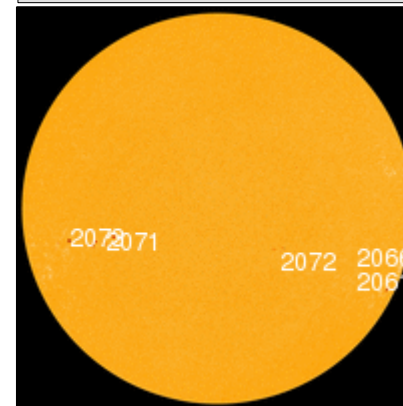
FEMA

NOAA Scales Activity (Range: 1/minor to 5/extreme)	Past 24 Hours	Current	Next 24 Hours
Space Weather Activity:	Minor	None	None
• Geomagnetic Storms	G1	None	None
• Solar Radiation Storms	None	None	None
• Radio Blackouts	None	None	None

## HF Communication Impact



## Sunspot Activity



# FEMA Readiness – Deployable Teams/Assets



Deployable Teams/Assets									
Resource	Status	Total	Available		Partially Available	Not Available	Deployed Activated	Comments	Rating Criterion
FCO		39	10	26%	0	1	28*	* 4 "detailed" included in Deployed/Activated column	OFDC Readiness: FCO    Green    Yellow    Red Type 1    3+       2       1 Type 2    4+       3       2 Type 3    4       3       2 <u>FDRC</u> 3       2       1
FDRC		9	6	67%	0	0	3		
US&R		28	26	93%	2	0	0	<ul style="list-style-type: none"><li>NM-TF1 (Yellow – Conditional)</li><li>WA-TF1 (Yellow – Conditional) until 5/30</li></ul>	<ul style="list-style-type: none"><li>Green = Available/FMC</li><li>Yellow = Available/PMC</li><li>Red    = Out-of-Service</li><li>Blue   = Assigned/Deployed</li></ul>
National IMAT		3	2	67%	0	0	1	<ul style="list-style-type: none"><li>IMAT East deployed to FL</li></ul>	<ul style="list-style-type: none"><li>Green: 3 avail</li><li>Yellow: 1 avail</li><li>Red: 0 avail (<i>Individual N-IMAT red if 50% of Section Chiefs and/or Team Leader is unavailable for deployment.</i>)</li></ul>
Regional IMAT		13	3	23%	1	3	6	<ul style="list-style-type: none"><li>Region I deployed to AL</li><li>Region IV deployed to NC &amp; MS</li><li>Region VI deployed to OK &amp; AR</li><li>Region X deployed to WA</li><li>Region II Partially Mission Capable (Team I)</li></ul> <u>Not Mission Capable:</u> <ul style="list-style-type: none"><li>Region V, VII, IX for Personnel shortages</li></ul>	<ul style="list-style-type: none"><li>Green: 7 or more avail</li><li>Yellow: 4 - 6 teams available</li><li>Red: &gt; 8 teams deployed/unavailable</li><li><i>R-IMAT also red if TL Ops/Log Chief is unavailable and has no qualified replacement.</i></li></ul>
MCOV		55	41	75%	0	5	9	<ul style="list-style-type: none"><li>3 deployed to 4174-AR</li><li>4 deployed to 4175-MS</li><li>2 deployed 4176-AL</li></ul>	<ul style="list-style-type: none"><li>Green = 80 – 100% avail</li><li>Yellow = 60 – 79% avail</li><li>Red = 59% or below avail</li><li>Readiness remains 95%</li></ul>

# FEMA Readiness – National/Regional Teams



National/Regional Teams									
Resource	Status	Total	Available		Partially Available	Not Available	Deployed/ Activated	Comments	Rating Criterion
NWC		5	5	100%	0	0	24/7		• Green = FMC • Yellow = PMC • Red = NMC
NRCC		2	357	94%	0	23	Not Activated		
HLT		1	1	100%	0	0	Not Activated		
DEST							Not Activated		
RRCCs		10	10	100%	0	0	Not Activated		
RWCs/MOCs		10	10	100%	0	0	24/7		



# FEMA

**FEMA's mission is to support our citizens and first responders to ensure that as a nation we work together to build, sustain, and improve our capability to prepare for, protect against, respond to, recover from, and mitigate all hazards.**