



# **FEMA**

## **Daily Operations Briefing**

**Monday, May 26, 2014**

**8:30 a.m. EDT**

# Significant Activity: May 25 – 26



## **Significant Events:**

- Mudslide – Colorado
- Wildfires – Arizona & Alaska

## **Significant Weather:**

- Slight risk of severe thunderstorms, heavy rain & flash flooding – Texas & Oklahoma
- Showers & thunderstorms possible – northern High Plains, Upper Midwest & New England
- Elevated/Critical Fire Weather areas – CA & NV
- Red Flag Warnings – AK
- Space Weather: Past 24 hours: none observed; next 24 hours: none predicted

## **Tropical Activity:**

- Eastern Pacific – Hurricane Amanda (Cat-4)

**FEMA Readiness:** No significant changes

**Declaration Activity:** None

# Hurricane Preparedness Week – May 25-31






FEMA

**NATIONAL HURRICANE PREPAREDNESS WEEK**  
MAY 25 TO 31, 2014

Sun	May 25	Hurricane Basics
Mon	May 26	Storm Surge
Tues	May 27	Wind
Wed	May 28	Inland Flooding
Thur	May 29	Forecast Process
Fri	May 30	Get a Plan
Sat	May 31	After the Storm

[hurricanes.gov/prepare](http://hurricanes.gov/prepare) & [ready.gov](http://ready.gov)

Joni David  
January 2014

  **FEMA** 

# Significant Mudslide – Colorado

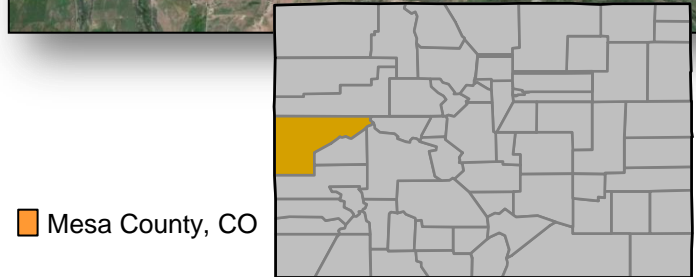
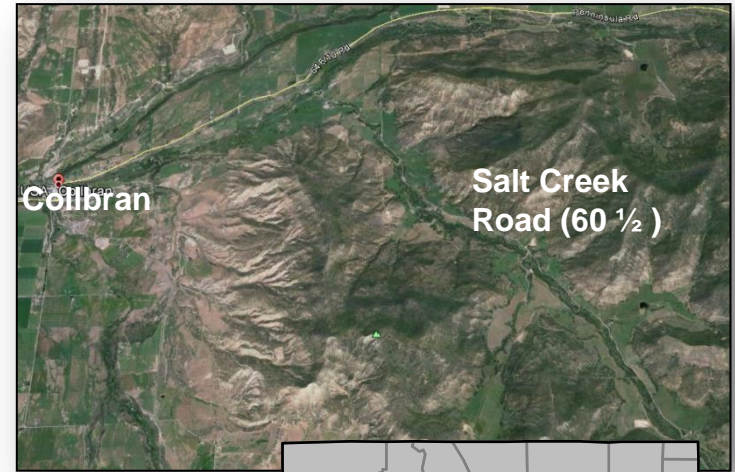


## Situation

- Very large mudslide along Salt Creek Rd, east of the town of Collbran (pop 708) in Mesa County, CO
- Size estimate of 2 miles wide x 4 miles long & 250 feet deep in places
- Three local individuals missing, possibly caught in slide
- The area is very remote; no structures have been reported damaged
- No major roads impacted (I-70 is approximately 26 miles north of slide)
- Local assessments to continue following daybreak today
- No injuries or fatalities reported

## Response

- Unified command established between the Plateau Valley Fire Dept and the Mesa County Sheriff's Office
- CO State EOC is at Normal Operations
- FEMA Region VIII remains at Watch/Steady State
- No requests for FEMA assistance



# Funny River Fire – Alaska



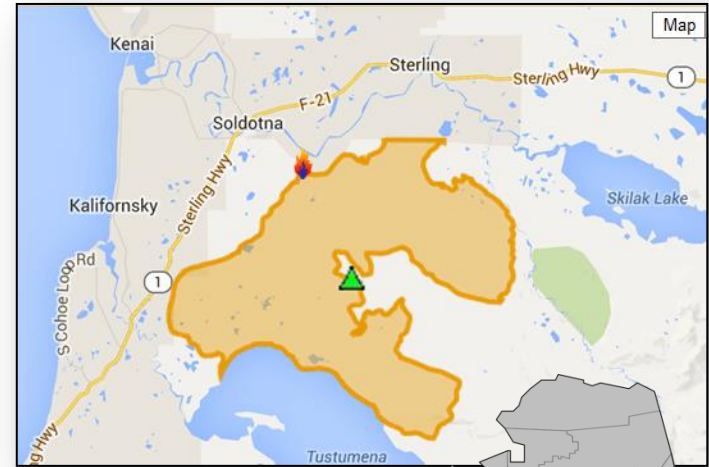
Fire Name	Location	Acres burned	% Contained	Est. Full Containment	FMAG	Structures Lost / Threatened	Fatalities / Injuries
Funny River Fire	AK (Kenai Peninsula Borough)	156,041	30%	N/A	Not Requested	0 / 2,442	0 / 0

## Situation

- Began May 19 near Soldotna (pop. 4,163) & Kalifornsky (pop. 7,850)
- Burning primarily in the Kenai National Wildlife Refuge
- Voluntary/mandatory evacuations in effect
- No injuries or fatalities reported
- 4 Shelters with unknown # of occupants (*NSS as of 4:30 a.m. EDT, May 26*)

## Response

- AK EOC is at Level 2, Heightened Awareness, for wildfires
- BLM Type 2 IMT & 589 personnel supporting the firefight
- FEMA Region X remains at Watch/Steady State



Kenai Peninsula Borough, AK



# Slide Fire – Arizona



FEMA

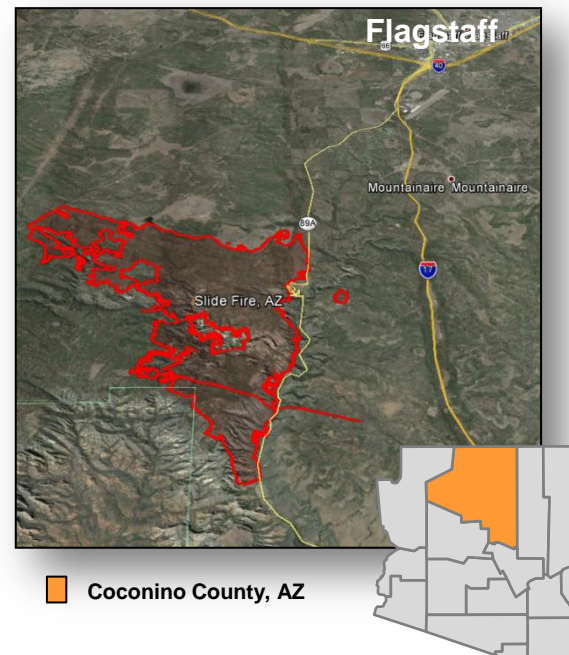
Fire Name	Location	Acres burned	% Contained	Est. Full Containment	FMAG	Structures Lost / Threatened	Fatalities / Injuries
Slide Fire	Sedona, AZ (Coconino County)	14,100 (+2,300)	25% (+15)	N/A	Request Denied May 21, 2014	0 / 350	0 / 0

## Situation

- Began May 20 near Slide Rock State Park in Oak Creek Canyon
- Burning almost entirely on Federal land, 5 miles N of Sedona (pop. 10k)
- 350 structures threatened (homes, businesses & outbuildings)
- Evacuations remain in place for approx. 236 residences
- Emergency Area Closure for National Forest lands in fire area
- No injuries or fatalities reported
- 1 Shelter open with 6 occupants *(NSS as of 4:30 a.m. EDT, May 26)*

## Response

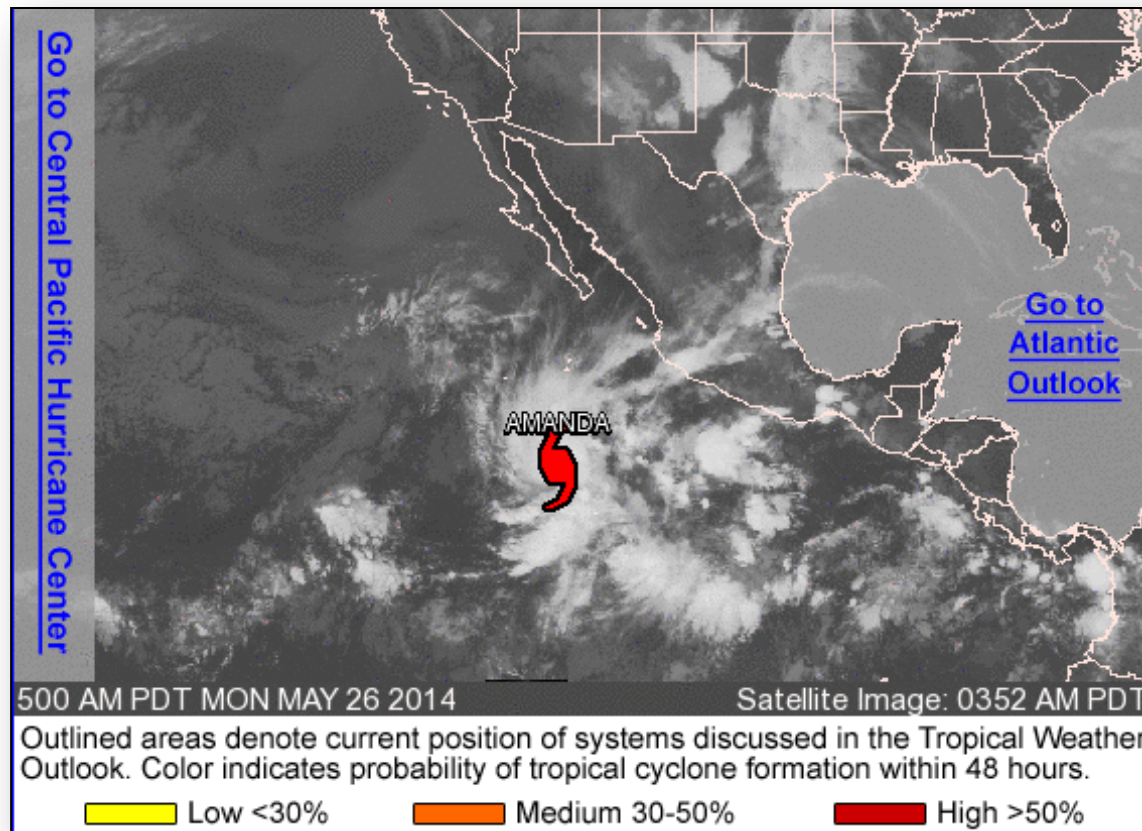
- AZ EOC is at Normal Operations
- ▲ Type 1 IMT & 1,236 (+261) personnel supporting the firefight
- FEMA Region IX remains at Watch/Steady State



# Eastern Pacific – Tropical Outlook



FEMA

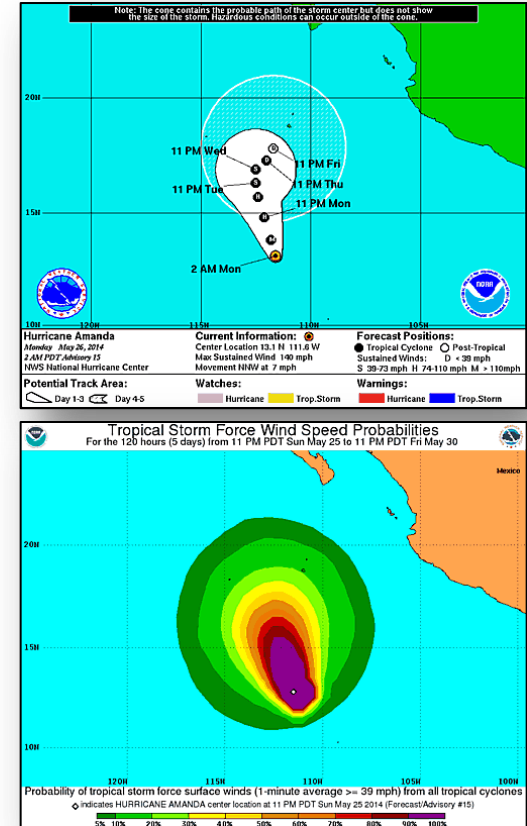


# Eastern Pacific – Hurricane Amanda (Cat-4)



## As of 8:00 a.m. EDT, May 26

- Located 685 miles south of Baja California MX Peninsula
- Maximum sustained winds of 140 mph
- Moving NNW at 7 mph
- Amanda is a Category 4 Hurricane
- Steady or rapid weakening is forecast for the next 48 hours
- Hurricane-force winds extend outward 30 miles
- Tropical Storm Force Winds extend outward 90 miles
- No threat to the U.S. or its territories; No coastal watches or warnings in effect





# Disaster Requests & Declarations



Declaration Requests in Process		Requests APPROVED (since last report)	Requests DENIED (since last report)
2	Date Requested	0	0
NH – DR Severe Storms and Flooding	May 21, 2014		
VT – DR Flooding	May 21, 2014		

# Joint Preliminary Damage Assessments



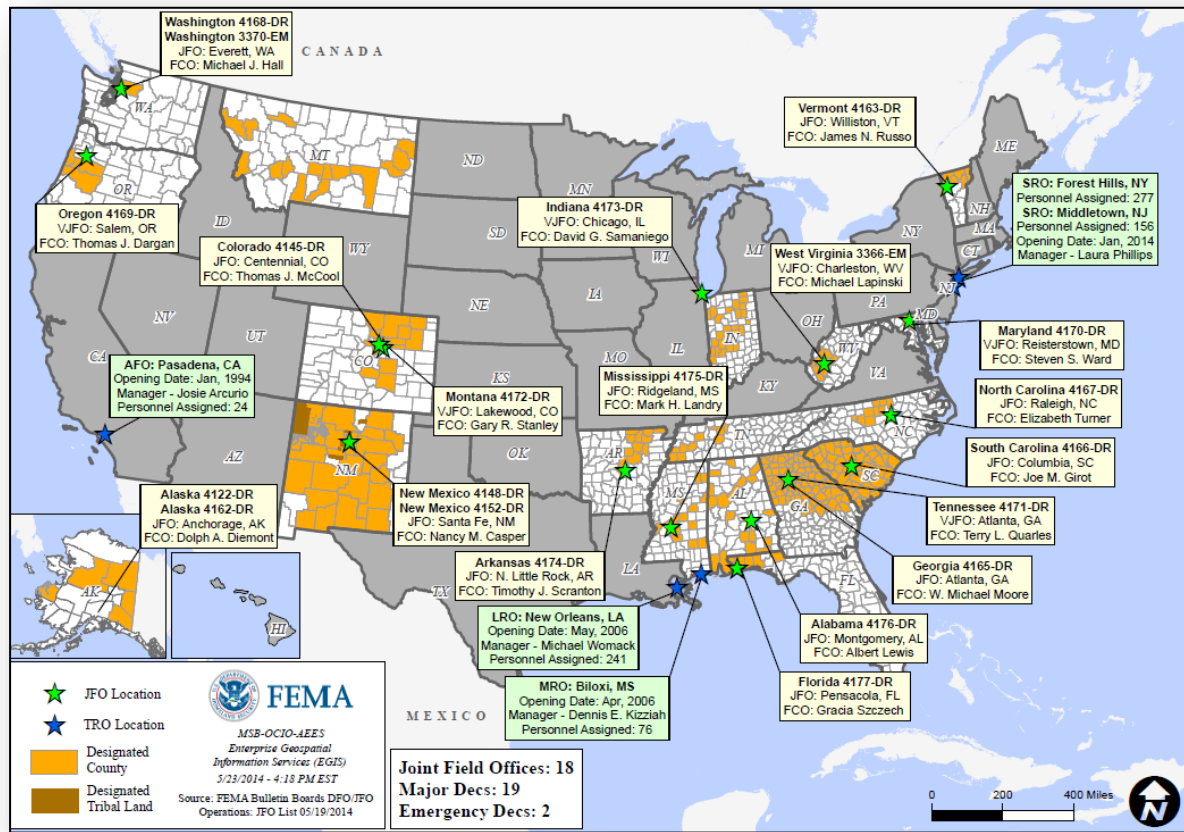
FEMA

Region	State / Location	Event	IA/PA	Number of Counties		Start – End
				Requested	Complete	
IV	AL	Severe Storms, Tornadoes, Straight-line Winds & Flooding April 28 – May 5	PA	20	20 (+20)	5/23 – 5/24
VII	NE	Severe Storms May 14, 2014	PA	6	6 (+1)	5/19 – 5/24

# Open Field Offices as of May 26, 2014



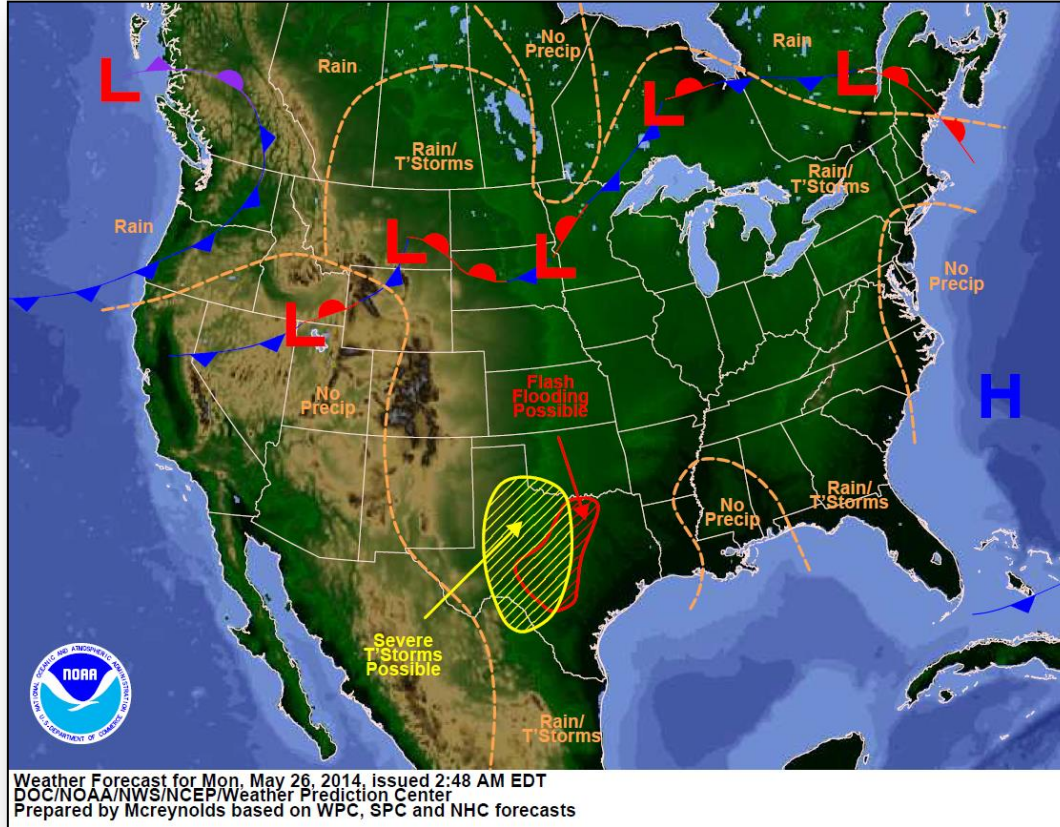
FEMA



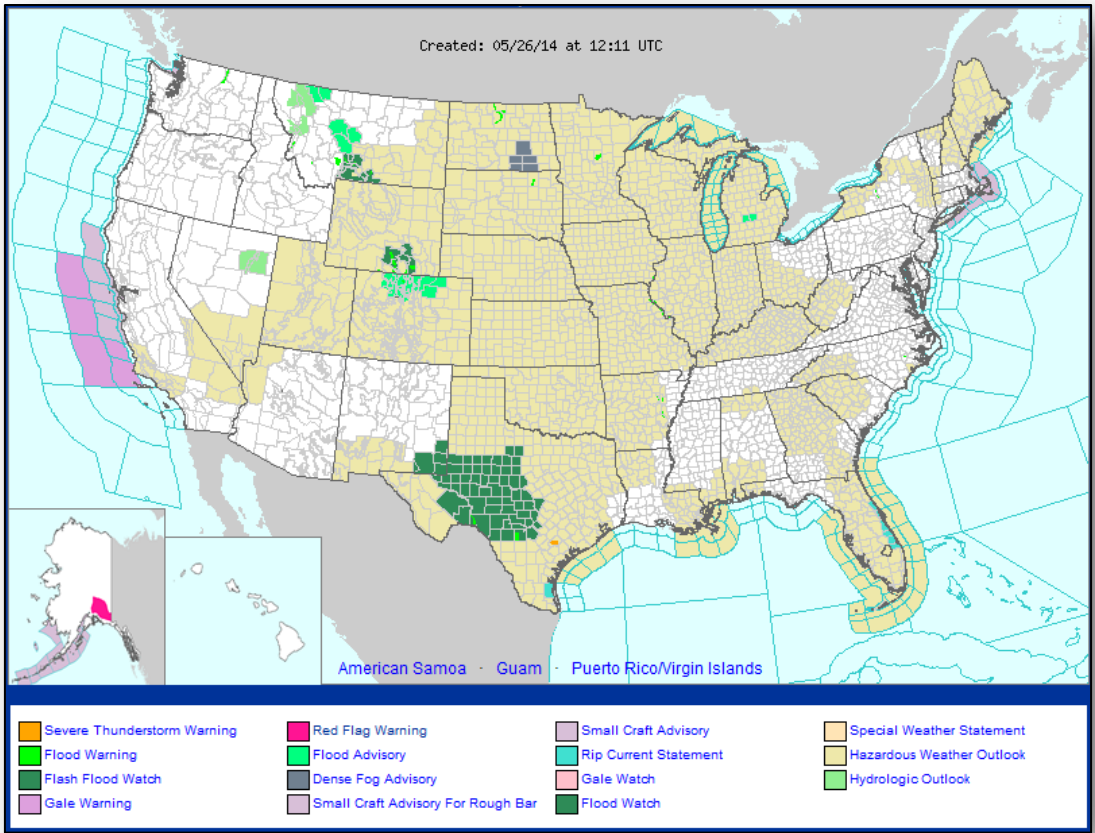
# National Weather Forecast



FEMA

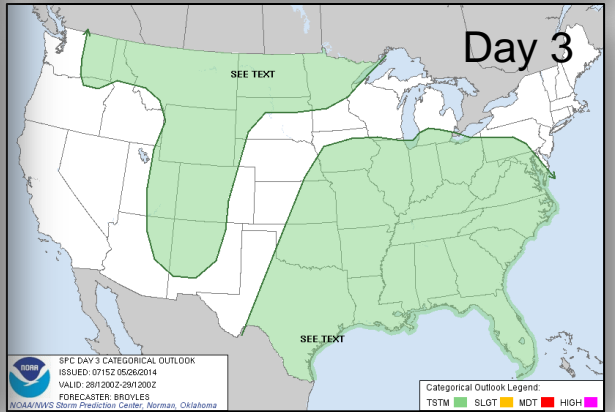
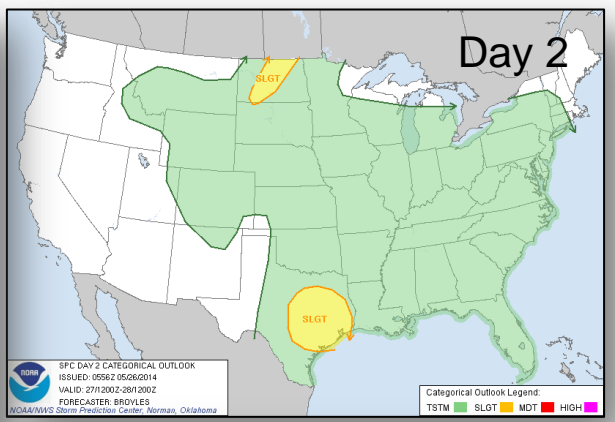
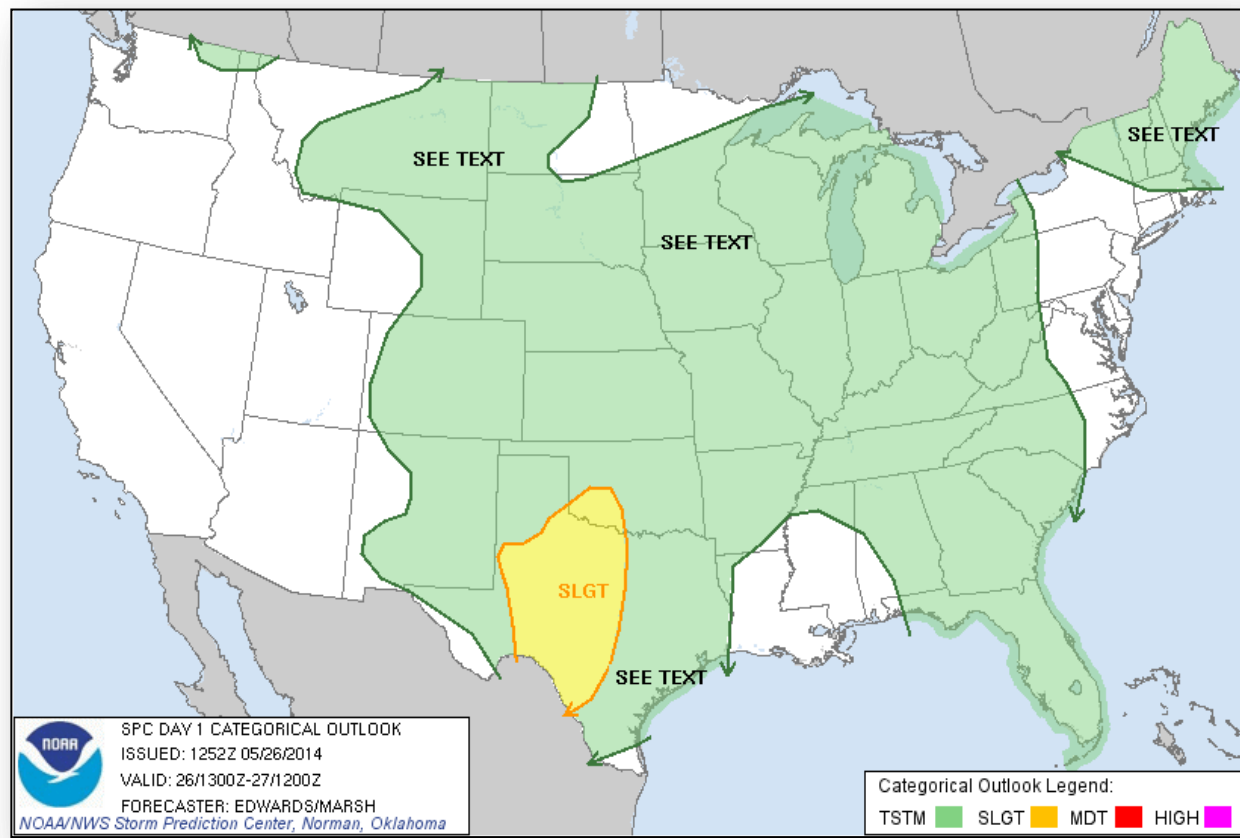


# Active Watches/Warnings





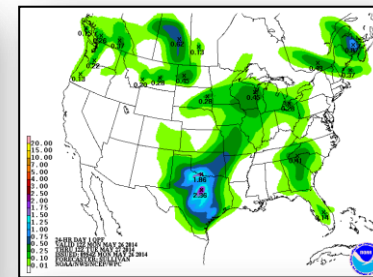
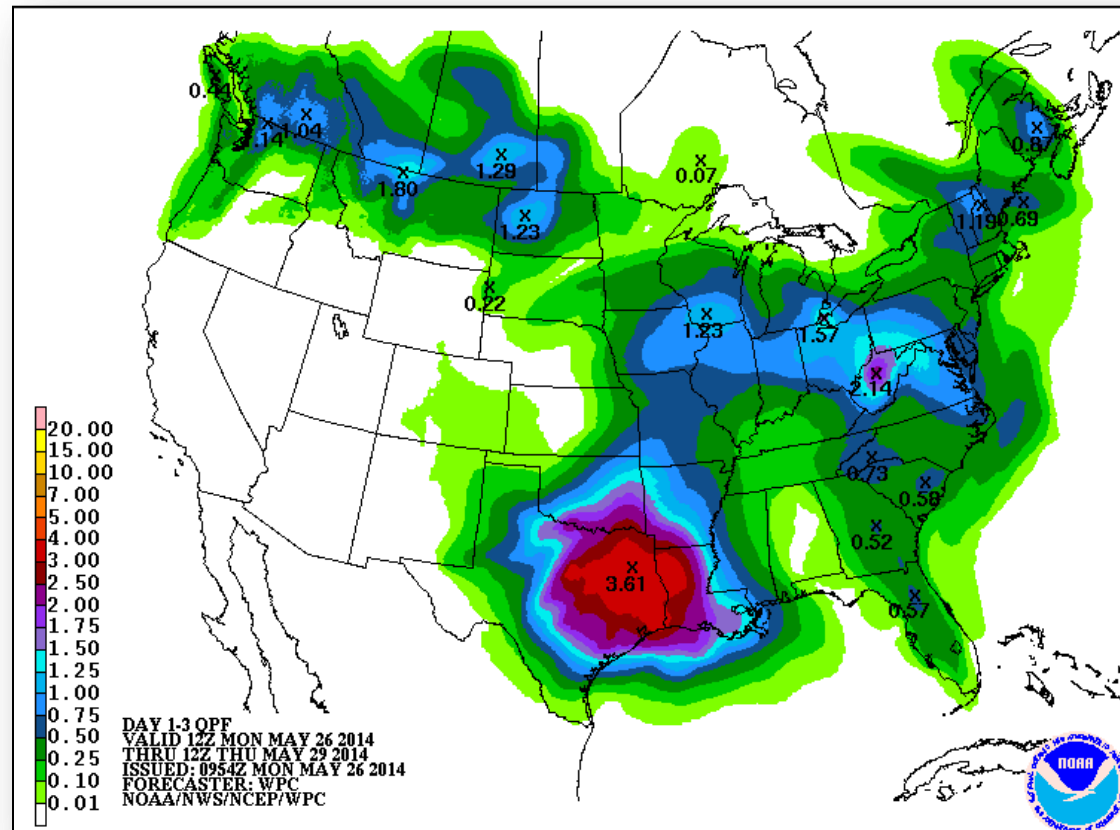
# Convective Outlook, Day 1 – 3



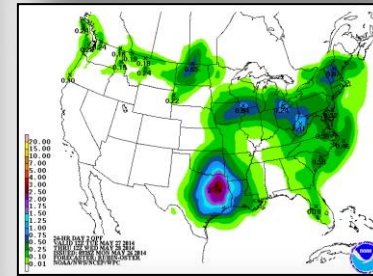


FEMA

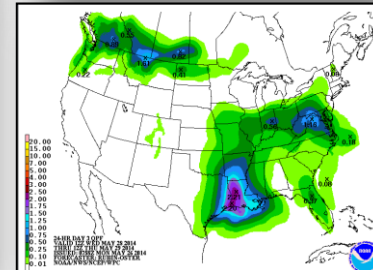
# Precipitation Forecast – 3 Day



Day 1



Day 2



Day 3

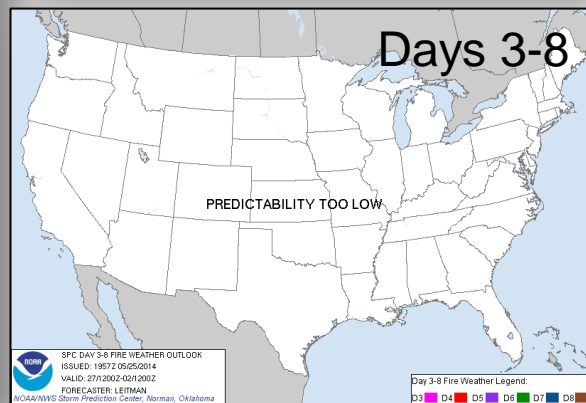
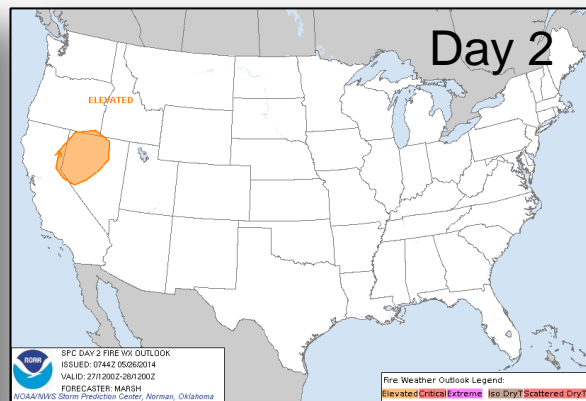
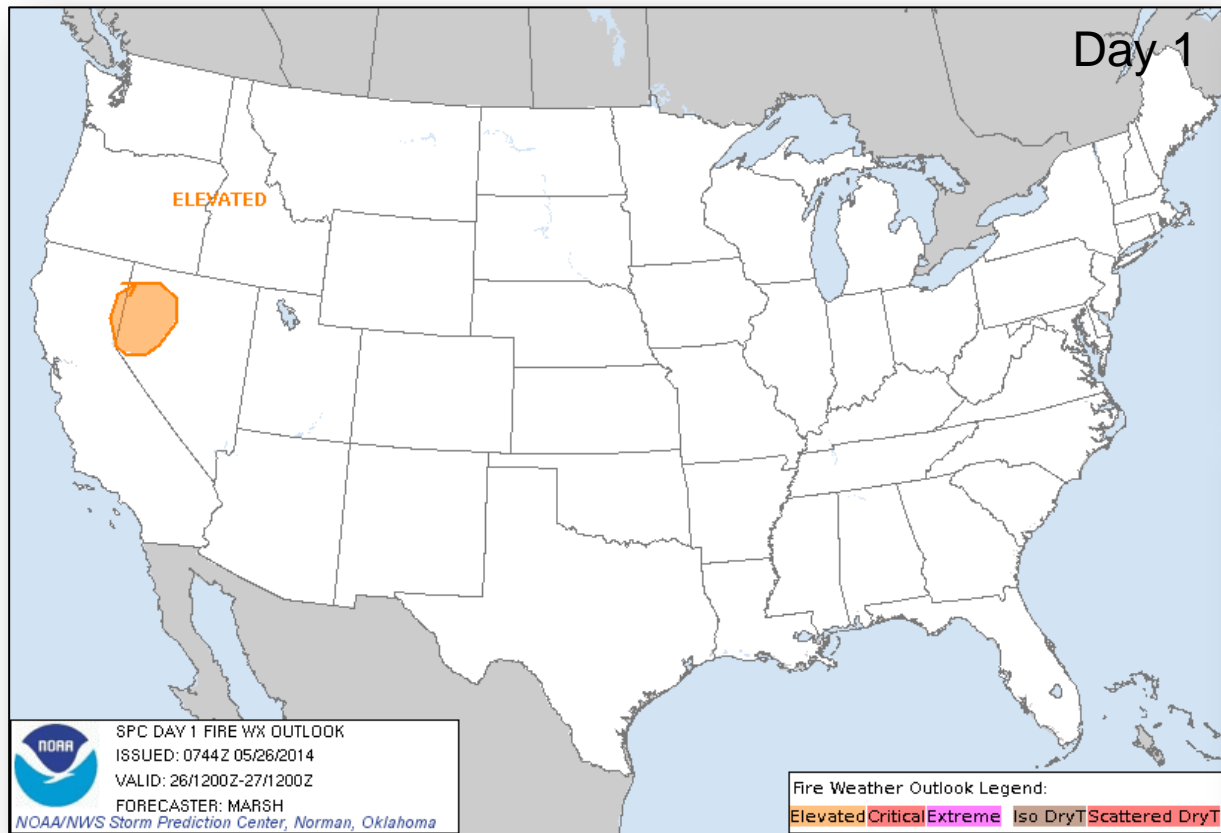
# River Forecast



FEMA



# Critical Fire Weather Areas – Days 1 – 8



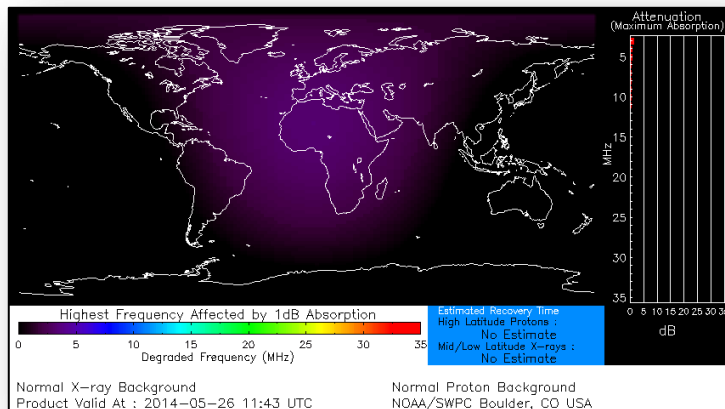
# Space Weather



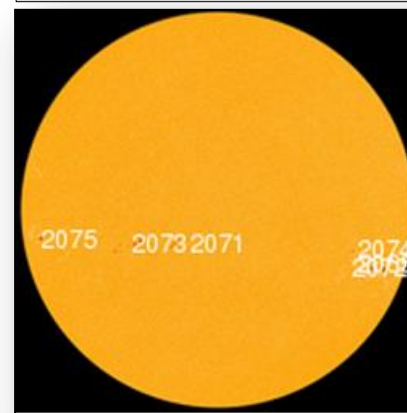
FEMA

NOAA Scales Activity (Range: 1/minor to 5/extreme)	Past 24 Hours	Current	Next 24 Hours
Space Weather Activity:	None	None	None
• Geomagnetic Storms	None	None	None
• Solar Radiation Storms	None	None	None
• Radio Blackouts	None	None	None

## HF Communication Impact



## Sunspot Activity





# FEMA Readiness – Deployable Teams/Assets



Deployable Teams/Assets									
Resource	Status	Total	Available		Partially Available	Not Available	Deployed Activated	Comments	Rating Criterion
FCO		39	10	26%	0	1	28*	* 4 “detailed” included in Deployed/Activated column	OFDC Readiness: FCO    Green    Yellow    Red Type 1    3+       2       1 Type 2    4+       3       2 Type 3    4       3       2 <u>FDRC</u> 3       2       1
FDRC		9	6	67%	0	0	3		
US&R		28	26	93%	2	0	0	<ul style="list-style-type: none"><li>NM-TF1 (Yellow – Conditional)</li><li>WA-TF1 (Yellow – Conditional) until 5/30</li></ul>	<ul style="list-style-type: none"><li>Green = Available/FMC</li><li>Yellow = Available/PMC</li><li>Red    = Out-of-Service</li><li>Blue   = Assigned/Deployed</li></ul>
National IMAT		3	2	67%	0	0	1	<ul style="list-style-type: none"><li>IMAT East deployed to FL</li></ul>	<ul style="list-style-type: none"><li>Green: 3 avail</li><li>Yellow: 1 avail</li><li>Red: 0 avail (<i>Individual N-IMAT red if 50% of Section Chiefs and/or Team Leader is unavailable for deployment.</i>)</li></ul>
Regional IMAT		13	4	30%	1	3	5	<ul style="list-style-type: none"><li>Region I deployed to AL</li><li>Region IV deployed to MS</li><li>Region VI deployed to OK &amp; AR</li><li>Region X deployed to WA</li><li>Region II Partially Mission Capable (Team I)</li></ul> <u>Not Mission Capable:</u> <ul style="list-style-type: none"><li>Region V, VII, IX for Personnel shortages</li></ul>	<ul style="list-style-type: none"><li>Green: 7 or more avail</li><li>Yellow: 4 - 6 teams available</li><li>Red: &gt; 8 teams deployed/unavailable</li><li><i>R-IMAT also red if TL Ops/Log Chief is unavailable and has no qualified replacement.</i></li></ul>
MCOV		55	45	81%	0	5	5	<ul style="list-style-type: none"><li>1 deployed to 4174-AR</li><li>2 deployed to 4175-MS</li><li>2 deployed 4176-AL</li></ul>	<ul style="list-style-type: none"><li>Green = 80 – 100% avail</li><li>Yellow = 60 – 79% avail</li><li>Red = 59% or below avail</li><li>Readiness remains 95%</li></ul>

# FEMA Readiness – National/Regional Teams



National/Regional Teams									
Resource	Status	Total	Available		Partially Available	Not Available	Deployed/ Activated	Comments	Rating Criterion
NWC		5	5	100%	0	0	24/7		• Green = FMC • Yellow = PMC • Red = NMC
NRCC		2	357	94%	0	23	Not Activated		
HLT		1	1	100%	0	0	Not Activated		
DEST							Not Activated		
RRCCs		10	10	100%	0	0	Not Activated		
RWCs/MOCs		10	10	100%	0	0	24/7		



# FEMA

**FEMA's mission is to support our citizens and first responders to ensure that as a nation we work together to build, sustain, and improve our capability to prepare for, protect against, respond to, recover from, and mitigate all hazards.**