



# **FEMA**

## **Daily Operations Briefing**

**Wednesday, June 4, 2014**

**8:30 a.m. EDT**

# Significant Activity: June 3 – 4



## **Significant Events:**

- Atlantic – Area 1; Eastern Pacific – Tropical Depression Boris
- Severe Weather – Midwest to Ohio Valley

## **Significant Weather:**

- Slight risk of severe weather – Ohio/Tennessee Valleys & from Dakotas to Texas Panhandle
- Scattered showers & thunderstorms – High Plains, Central Plains Midwest, Ohio Valley, Mid-Atlantic & Northeast
- Heavy rain & flooding/flash flooding – southern Illinois eastward to western Virginia
- Near record heat continues across southern Arizona
- Elevated/Critical Fire Weather Areas: AZ, NM & CO
- Red Flag Warnings: None
- Space Weather: Past 24 hours – None observed; next 24 hours – none predicted

## **FEMA Readiness:**

- NWC – Enhanced Watch (Dayshift only)

**Declaration Activity:** None

# Severe Weather – Midwest to Ohio Valley



FEMA

## Situation – June 3

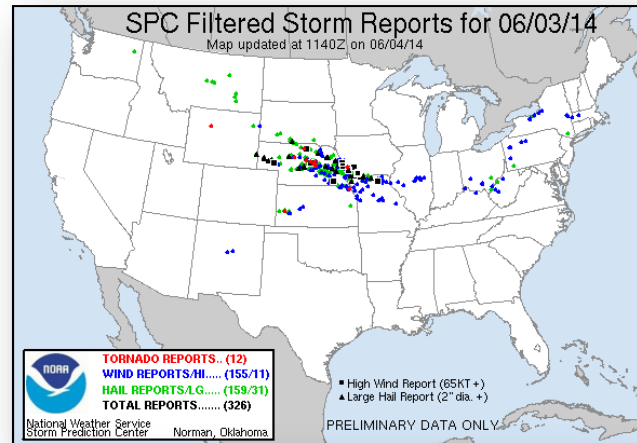
- Severe weather from the Central Great Plains to Ohio Valley
- NWS received preliminary reports of twelve tornadoes, high winds & large hail (up to 4" in diameter)

## Impacts:

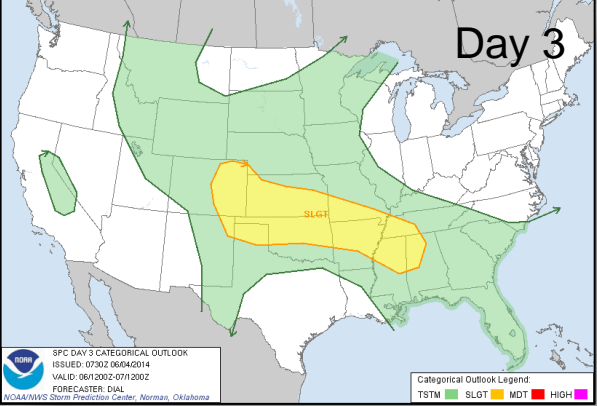
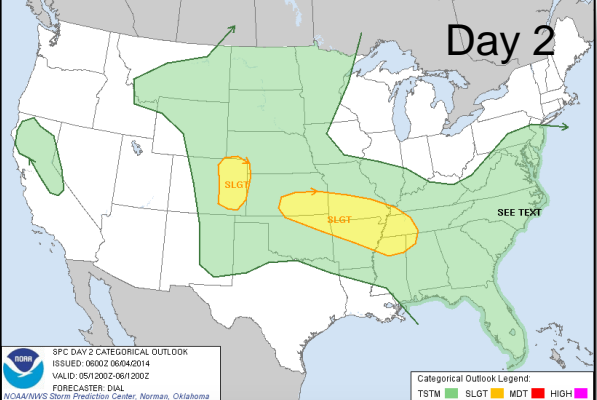
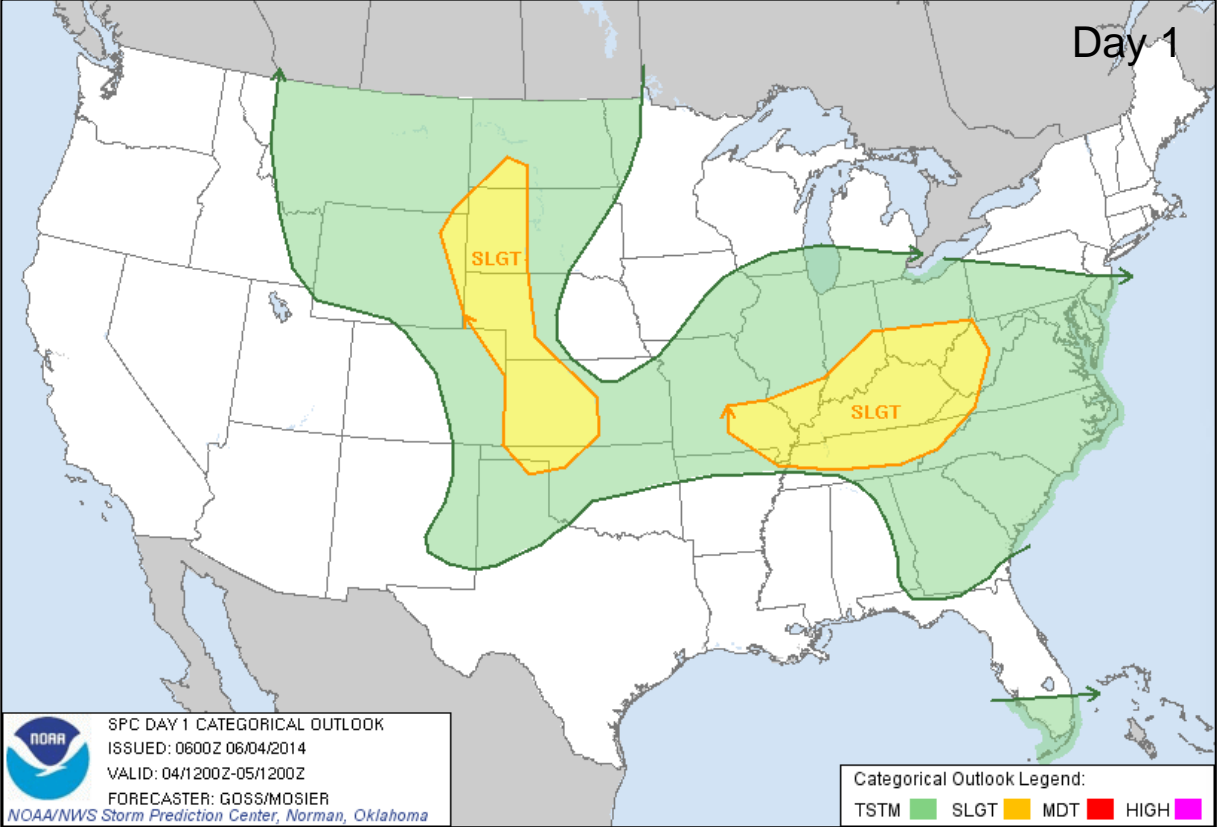
- No significant damage or injuries/fatalities reported
- Minor structural damage to residences & businesses in IA & NE
  - 10 structures & several outbuildings damaged in Pottawattamie County, IA
- Street flooding in Omaha receding; minor damage to homes
- 39k customers without power Regions V & VII; majority in MO (22k)
- One shelter open in Omaha, NE, with eleven occupants (*ESF-6, June 4*)

## Response:

- All SEOCs remain at Normal Operations
- June 3 IA Governor declared State of Emergency for Pottawattamie County
- FEMA Region VII RRCC not activated; RWC returned to normal ops
- No unmet needs or shortfalls reported
- No requests for FEMA assistance



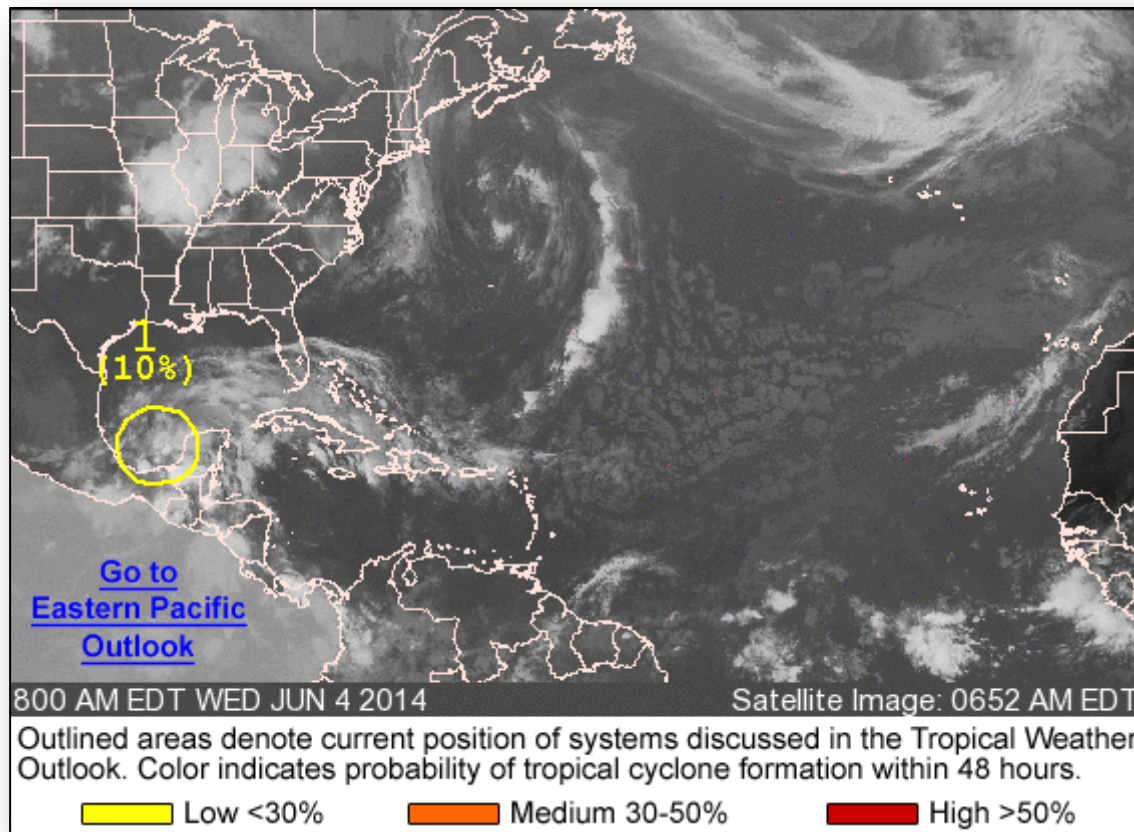
# Convective Outlook, Day 1 – 3



# Tropical Outlook – Atlantic



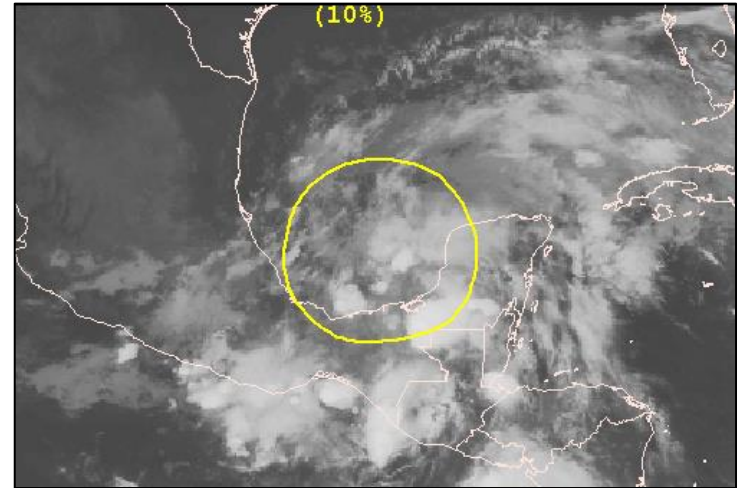
FEMA



# Atlantic – Area 1

## As of 8:00 a.m. EDT

- Trough of low pressure over the Bay of Campeche
- Producing disorganized showers & thunderstorms
- Strong upper-level winds expected to limit significant development Little movement at present
- Potential to produce heavy rainfall is possible over southeastern Mexico
- Chance of development into a tropical cyclone:
  - Next 48 hours: Low (10%)
  - Next 5 days: Low (20%)

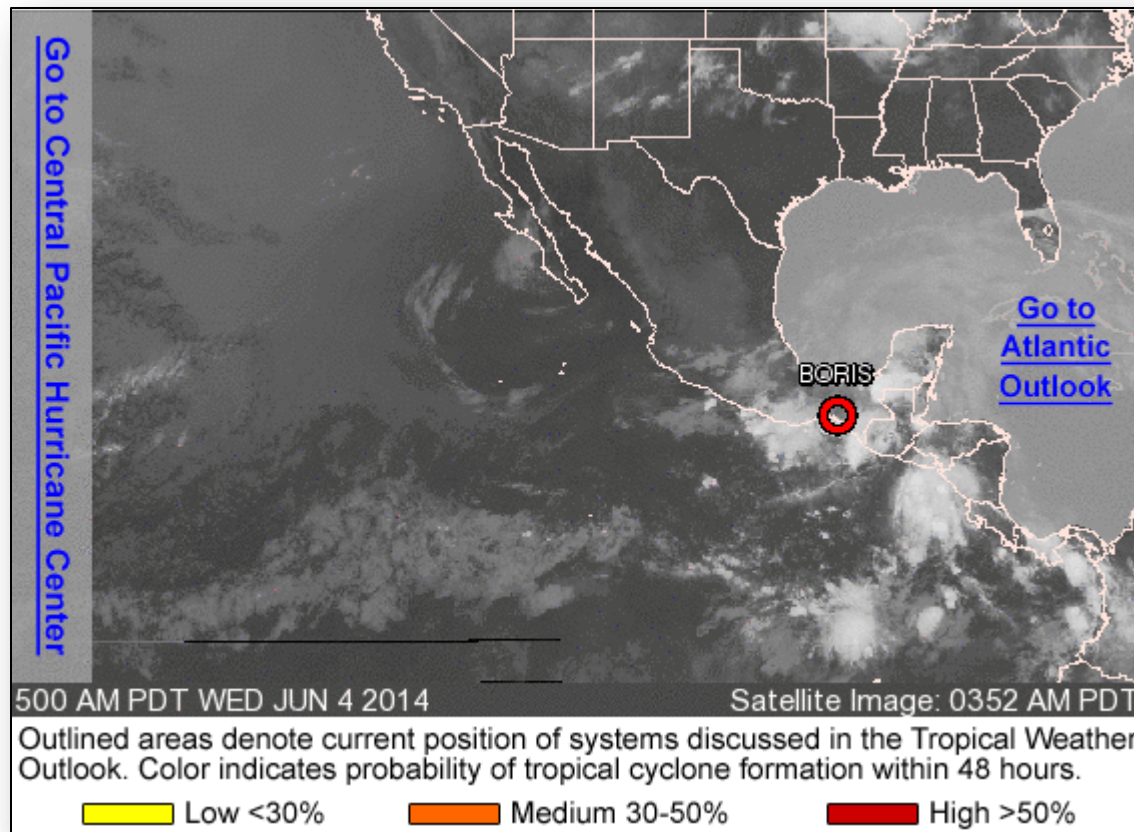




# Tropical Outlook – Eastern Pacific



FEMA

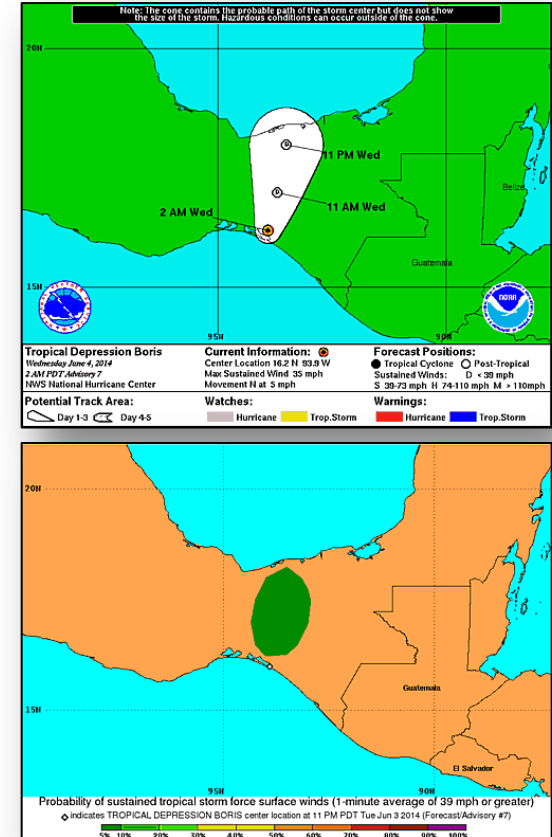


# Eastern Pacific – Tropical Depression Boris



## As of 8:00 a.m. EDT

- Located 85 mi E of Salina Cruz, Mexico, moving N at 5 mph
- Forecast to continue to move farther inland
- TD Boris weakens but will continue to soak E Mexico
- Boris expected to become a remnant low later today
- Maximum sustained winds near 35 mph

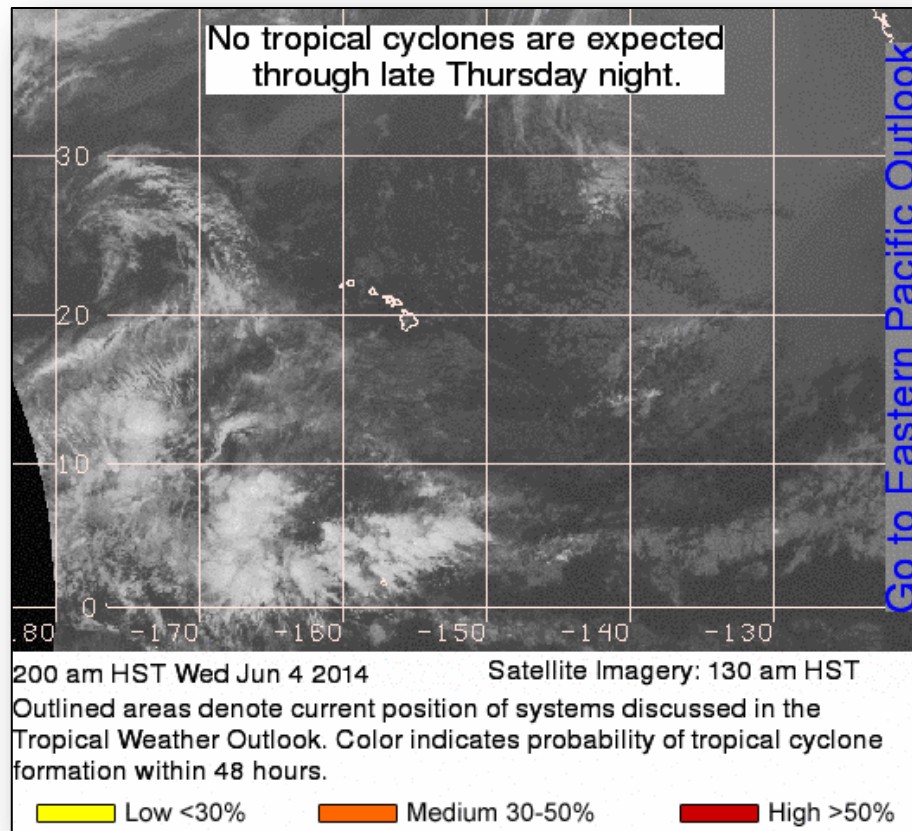




# Tropical Outlook – Central Pacific



FEMA



# Disaster Requests & Declarations



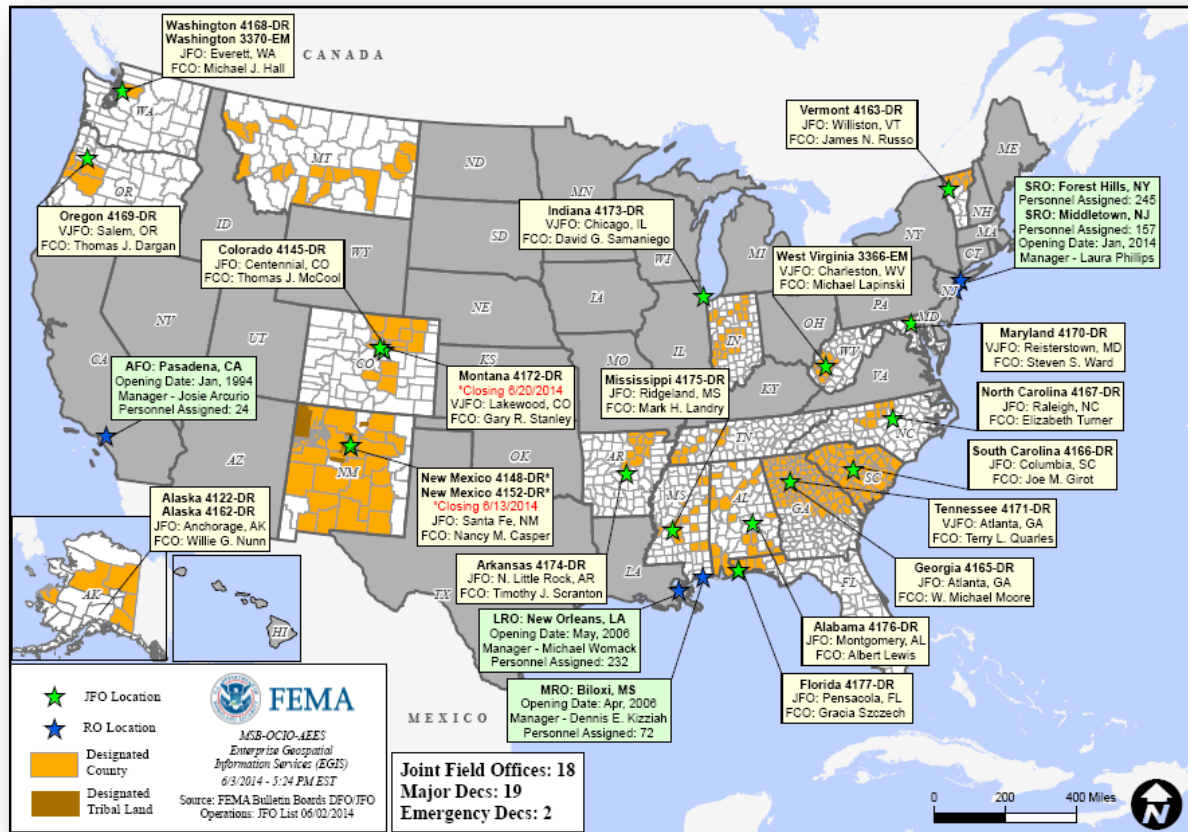
Declaration Requests in Process		Requests APPROVED (since last report)	Requests DENIED (since last report)
2	Date Requested	0	0
NH – DR Severe Storms and Flooding	May 21, 2014		
VT – DR Flooding	May 21, 2014		

# Joint Preliminary Damage Assessments



Region	State / Location	Event	IA/PA	Number of Counties		Start – End
				Requested	Complete	
II	NY	Wind & Flooding May 16-17	PA	10	7	5/28 – TBD
IV	FL	Big Bend Rain Event April 2014	IA	2	1	5/30 – 6/9
			PA	7	3	5/27 – 6/9

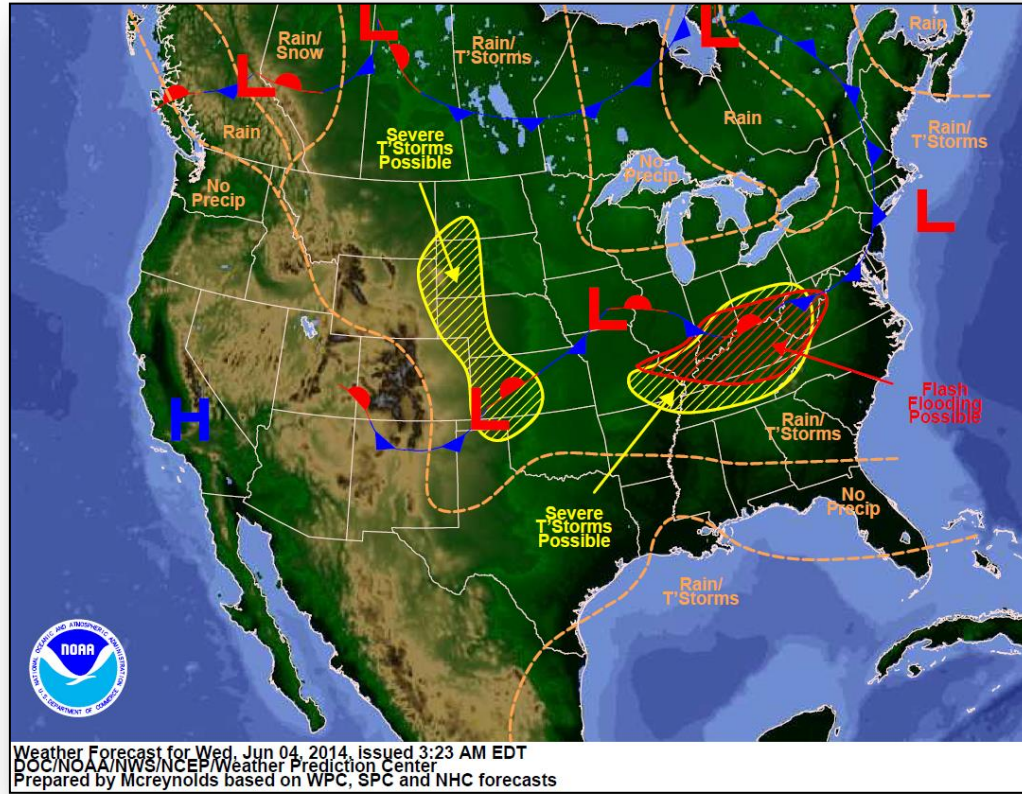
# Open Field Offices as of June 4, 2014



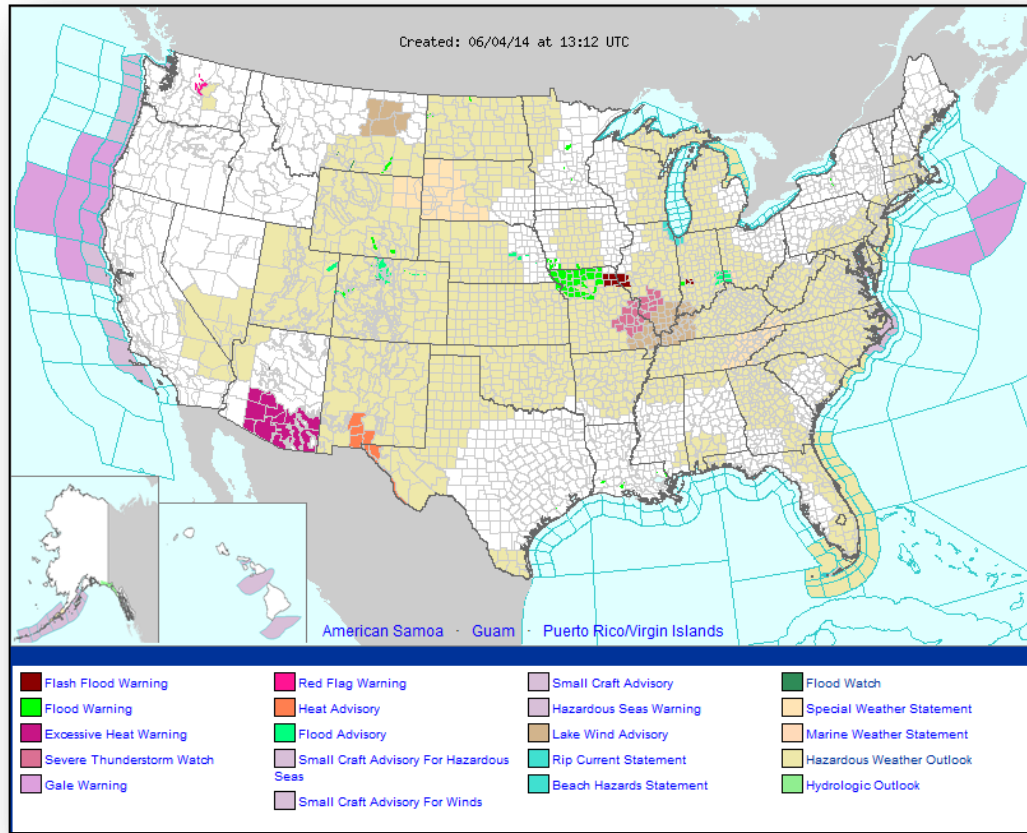
# National Weather Forecast



FEMA



# Active Watches/Warnings

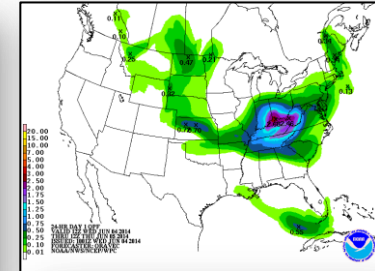
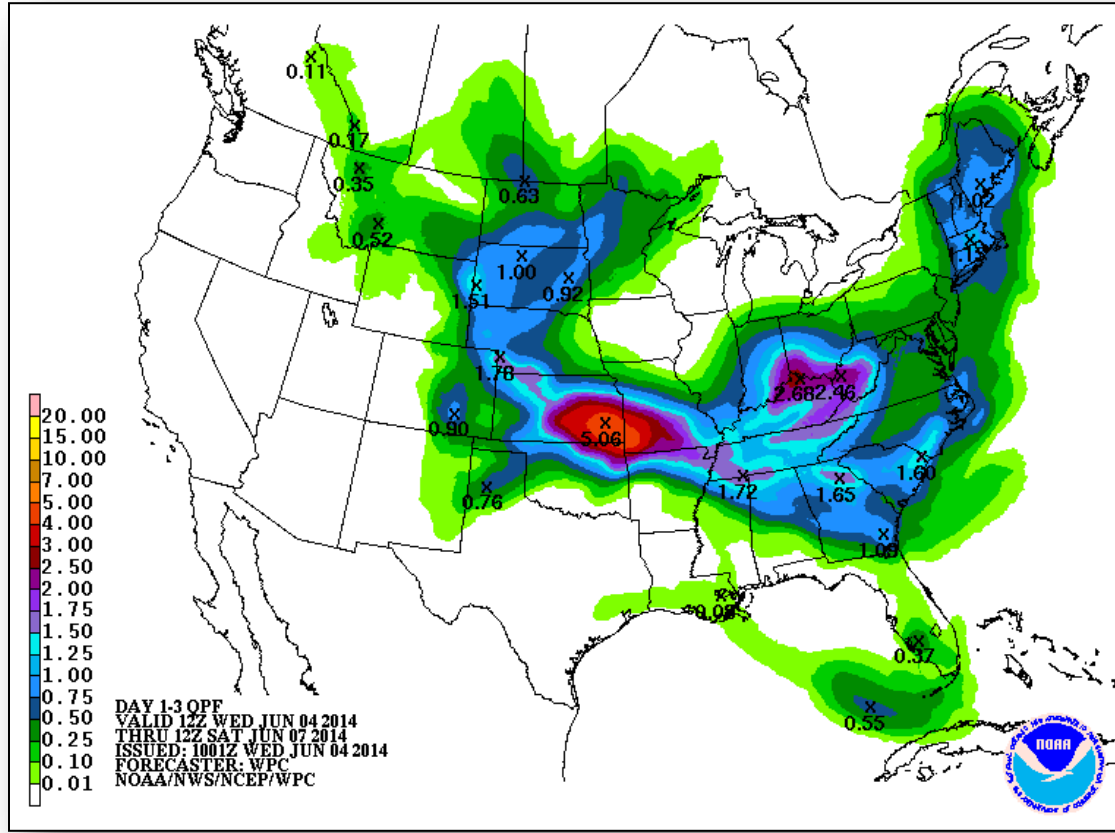




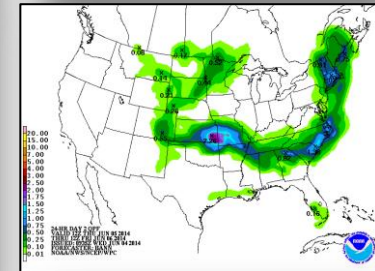


FEMA

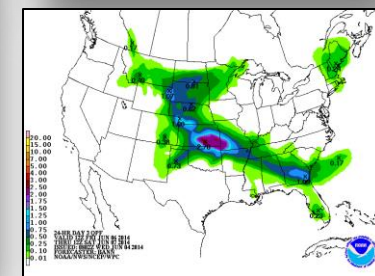
# Precipitation Forecast – 3 Day



Day 1



Day 2

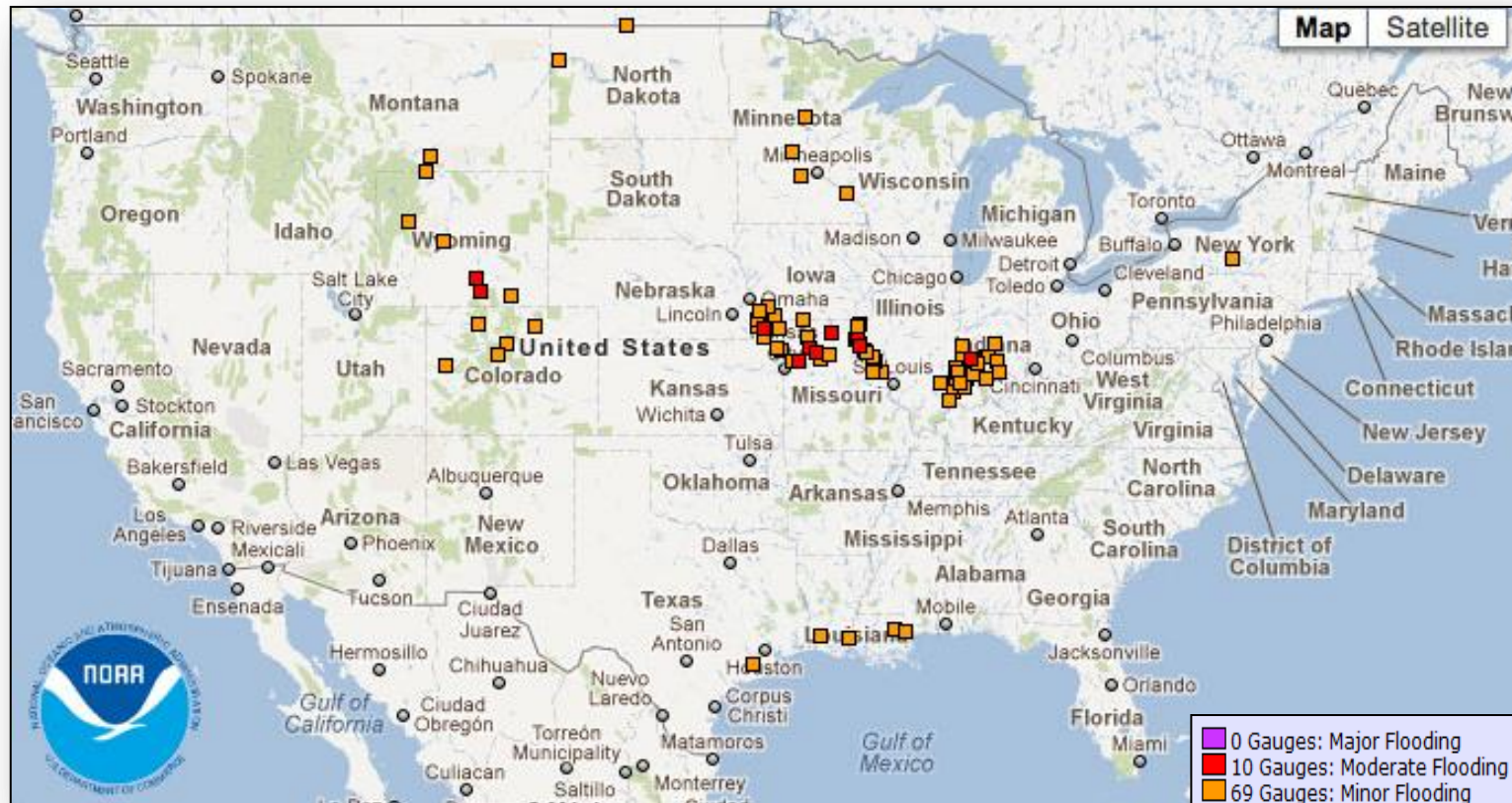


Day 3

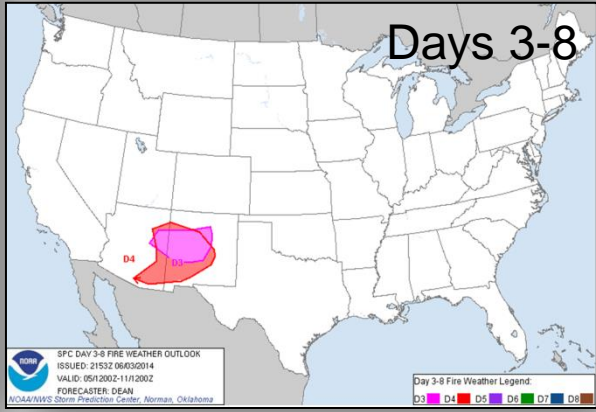
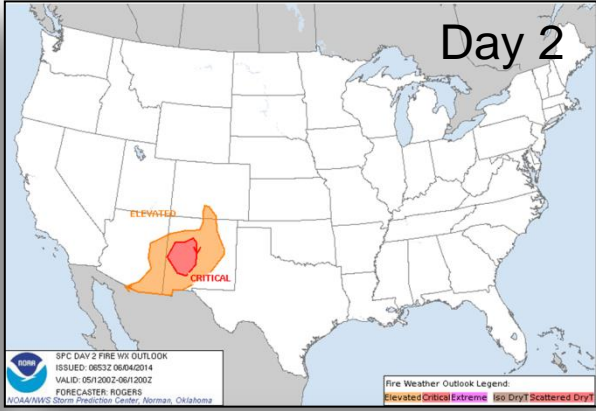
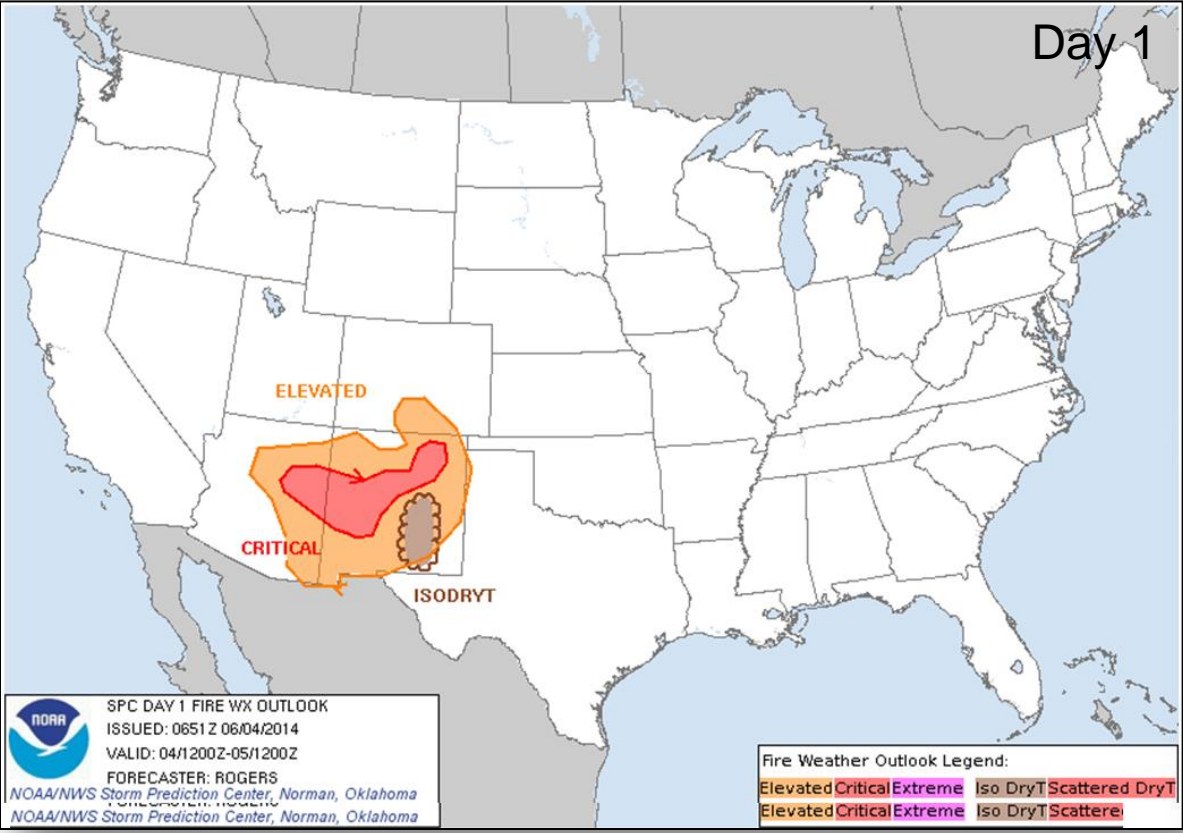
# River Forecast



FEMA



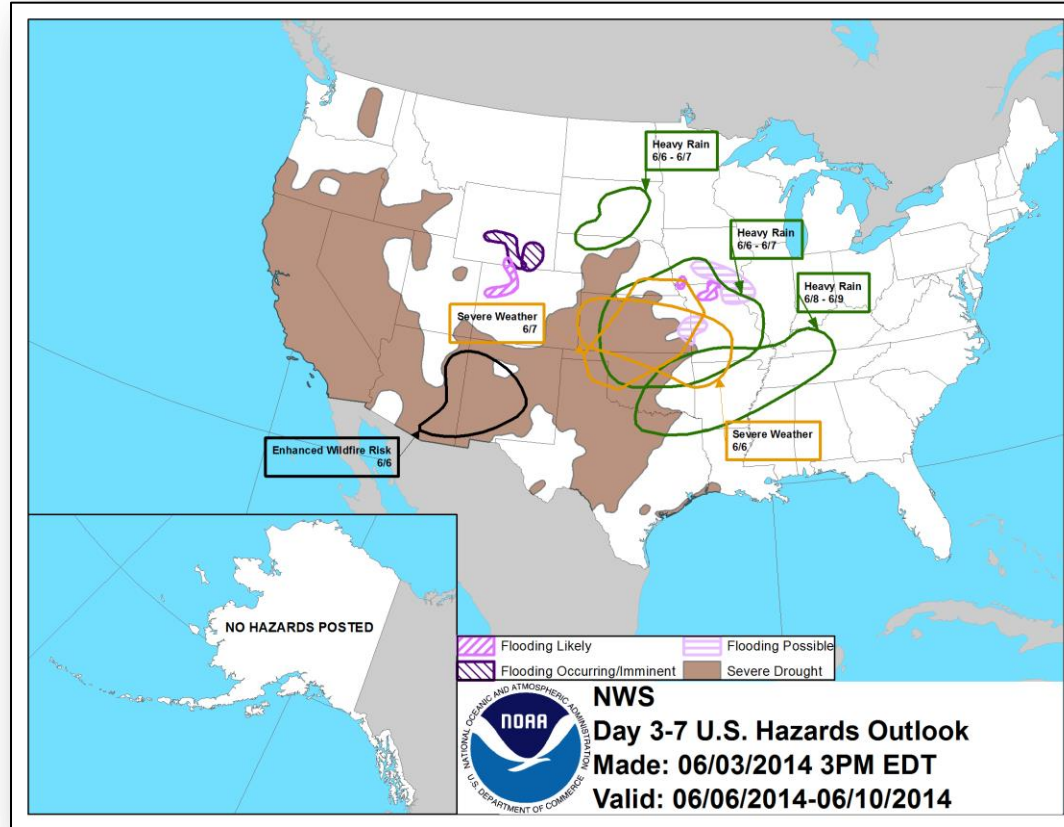
# Critical Fire Weather Areas – Days 1-8



# Hazard Outlook: June 6 - 10



FEMA



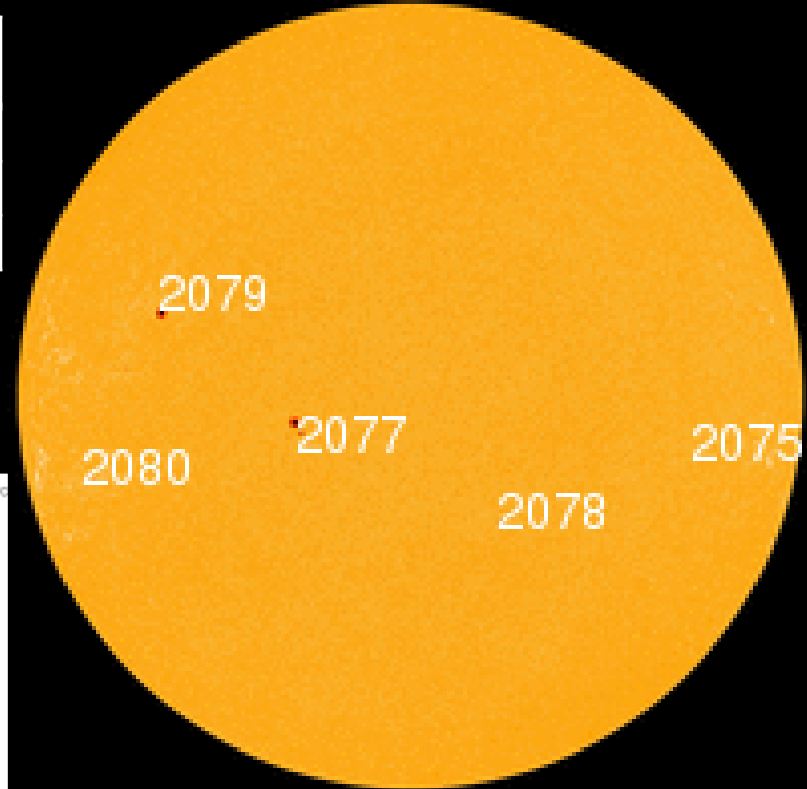
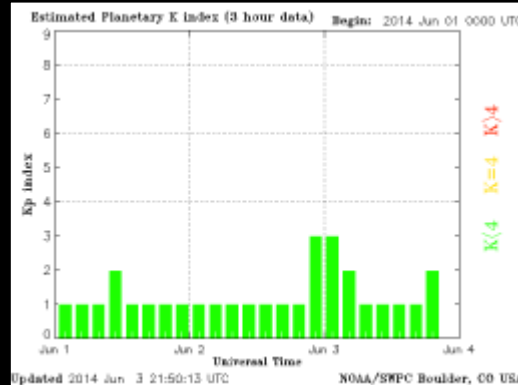
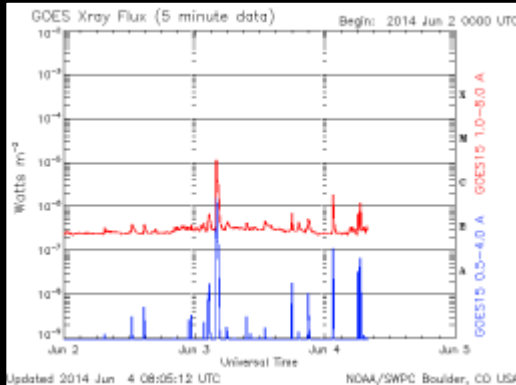


# Space Weather Summary

Space Weather Summary June 4th, 2014	Past 48 Hours	Current
Solar Flare Radio Blackouts (R Scale)	None	None
Solar Radiation Storms (S Scale)	None	None
Geomagnetic Storms (G Scale)	None	None

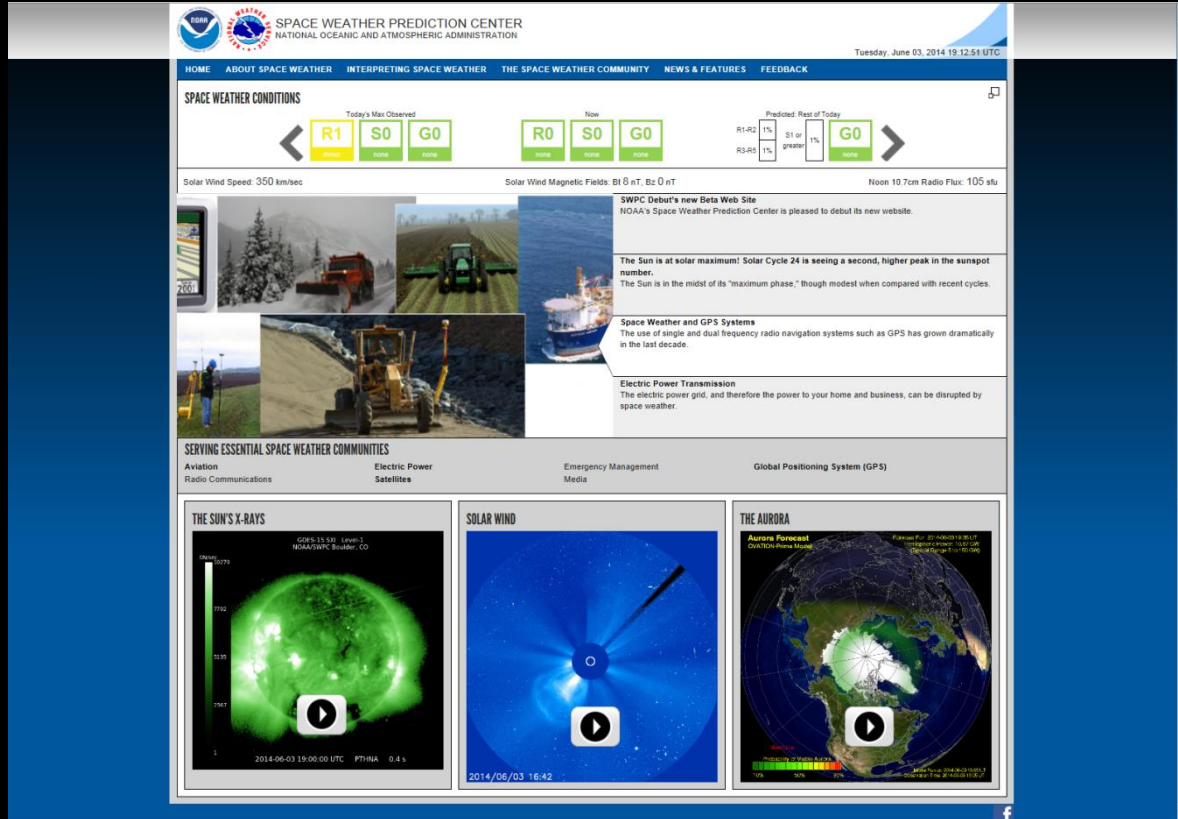
## Summary of Recent Activity/Outlook:

- Overall, current regions are relatively small and simple
- Threat of severe to extreme activity is very low at this time



Bob Rutledge  
SWPC  
June 4th, 2014

# New Webpage Available for Feedback



The screenshot displays the NOAA Space Weather Prediction Center (SWPC) website. The header includes the NOAA logo, the text "SPACE WEATHER PREDICTION CENTER NATIONAL OCEANIC AND ATMOSPHERIC ADMINISTRATION", and the date "Tuesday, June 03, 2014 19:12:51 UTC". The navigation bar contains links: HOME, ABOUT SPACE WEATHER, INTERPRETING SPACE WEATHER, THE SPACE WEATHER COMMUNITY, NEWS & FEATURES, and FEEDBACK.

The main content area is titled "SPACE WEATHER CONDITIONS". It features three columns of status boxes:

- Today's Max Observed:** R1 (Minor), S0 (Minor), G0 (Minor).
- Now:** R0 (Minor), S0 (Minor), G0 (Minor).
- Predicted: Rest of Today:** R1-40 (1%), S1 or greater (1%), G0 (Minor).

Below these boxes, three key metrics are displayed: Solar Wind Speed: 350 km/sec, Solar Wind Magnetic Fields: B1.6 nT, Bz 0 nT, and Noon 10.7cm Radio Flux: 105 sfu.

The page includes several news articles with accompanying images:

- SWPC Debut's new Beta Web Site:** NOAA's Space Weather Prediction Center is pleased to debut its new website.
- The Sun is at solar maximum!** Solar Cycle 24 is seeing a second, higher peak in the sunspot number. The Sun is in the midst of its "maximum phase," though modest when compared with recent cycles.
- Space Weather and GPS Systems:** The use of single and dual frequency radio navigation systems such as GPS has grown dramatically in the last decade.
- Electric Power Transmission:** The electric power grid, and therefore the power to your home and business, can be disrupted by space weather.

A section titled "SERVING ESSENTIAL SPACE WEATHER COMMUNITIES" lists four categories: Aviation, Radio Communications, Electric Power Satellites, and Emergency Management Media. The "Global Positioning System (GPS)" link is highlighted.

The bottom section features three panels:

- THE SUN'S X-RAYS:** A green-tinted image of the Sun with a play button icon. Metadata: "2014-06-03 19:06:00 UTC PTHNA 0.4 s".
- SOLAR WIND:** A blue-tinted image of the solar wind with a play button icon. Metadata: "2014/06/03 16:42".
- THE AURORA:** A map of the Earth showing aurora activity with a play button icon. Metadata: "Aurora Forecast 2014-06-03 16:42".



# FEMA Readiness – Deployable Teams/Assets



Deployable Teams/Assets									
Resource	Status	Total	Available		Partially Available	Not Available	Detailed Deployed Activated	Comments	Rating Criterion
FCO		39	11	28%	0	1	27		OFDC Readiness: FCO    Green    Yellow    Red Type 1    3+            2            1 Type 2    4+            3            2 Type 3    4                3            2  FDRC    3                2            1
FDRC		10	3	30%	0	0	7		
US&R		28	27	96%	0	1	0	<ul style="list-style-type: none"> <li>NM-TF1 (Red due to personnel shortages)</li> </ul>	<ul style="list-style-type: none"> <li>Green = Available/FMC</li> <li>Yellow = Available/PMC</li> <li>Red = Out-of-Service</li> <li>Blue = Assigned/Deployed</li> </ul>
National IMAT		3	1	33%	0	0	2	<ul style="list-style-type: none"> <li>National-IMAT East deployed to FL (demobilizing 6/6/14)</li> <li>National-IMAT West deployed to DC (NRCC)</li> </ul>	<ul style="list-style-type: none"> <li>Green: 3 avail</li> <li>Yellow: 1 avail</li> <li>Red: 0 avail (<i>Individual N-IMAT red if 50% of Section Chiefs and/or Team Leader is unavailable for deployment.</i>)</li> </ul>
Regional IMAT		13	4	30%	1	3	5	<ul style="list-style-type: none"> <li>Region I deployed to AL</li> <li>Region II Partially Mission Capable (Team I)</li> <li>Region IV deployed to MS</li> <li>Region VI deployed to OK &amp; AR</li> <li>Region X deployed to WA</li> <li><u>Not Mission Capable:</u></li> <li>Region V, VII, IX for Personnel shortages</li> </ul>	<ul style="list-style-type: none"> <li>Green: 7 or more avail</li> <li>Yellow: 4 - 6 teams available</li> <li>Red: &gt; 8 teams deployed/unavailable</li> <li><i>R-IMAT also red if TL Ops/Log Chief is unavailable and has no qualified replacement.</i></li> </ul>
MCOV		55	48	87%	0	5	2	<ul style="list-style-type: none"> <li>1 deployed to 4174-AR</li> <li>1 deployed 4176-AL</li> </ul>	<ul style="list-style-type: none"> <li>Green = 80 – 100% avail</li> <li>Yellow = 60 – 79% avail</li> <li>Red = 59% or below avail</li> <li>Readiness remains 95%</li> </ul>

# FEMA Readiness – National/Regional Teams



National/Regional Teams									
Resource	Status	Total	Available		Partially Available	Not Available	Deployed/ Activated	Comments	Rating Criterion
NWC		5	5	100%	0	0	24/7	Enhanced Watch (dayshift)	<ul style="list-style-type: none"> <li>• Green = FMC</li> <li>• Yellow = PMC</li> <li>• Red = NMC</li> </ul>
NRCC		2	353	93%	0	26	Not Activated		
HLT		1	N/A	N/A	0	1	Activated	Activated	
DEST							Not Activated		
RRCCs		10	10	100%	0	0	Not Activated		
RWCs/MOCs		10	10	100%	0	0	24/7		



# FEMA

**FEMA's mission is to support our citizens and first responders to ensure that as a nation we work together to build, sustain, and improve our capability to prepare for, protect against, respond to, recover from, and mitigate all hazards.**