



# **FEMA**

## **Daily Operations Briefing**

**Monday, July 7, 2014**

**8:30 a.m. EDT**

# Significant Activity: July 4 – 7



**Significant Events:** None

**Tropical Activity:**

- Atlantic – Disturbance 1: LOW chance (near 0%)
- Eastern Pacific – Disturbance 1: MEDIUM chance (30%); Disturbance 2: LOW chance (20%)
- Central Pacific – No tropical cyclones expected through Tuesday night
- Western Pacific – Super Typhoon 08W (Neoguri)

**Significant Weather:**

- Severe weather – slight risk for portions of the Central Plains to the OH Valley & western New England
- Showers & thunderstorms – West Coast into the Rockies & Southwest; eastern TX & FL
- Space Weather – Past 24 hours: None / Next 24 hours: Minor & radio blackouts reach R1 level likely
- Critical Fire Weather: None; Red Flag Warnings: Puerto Rico

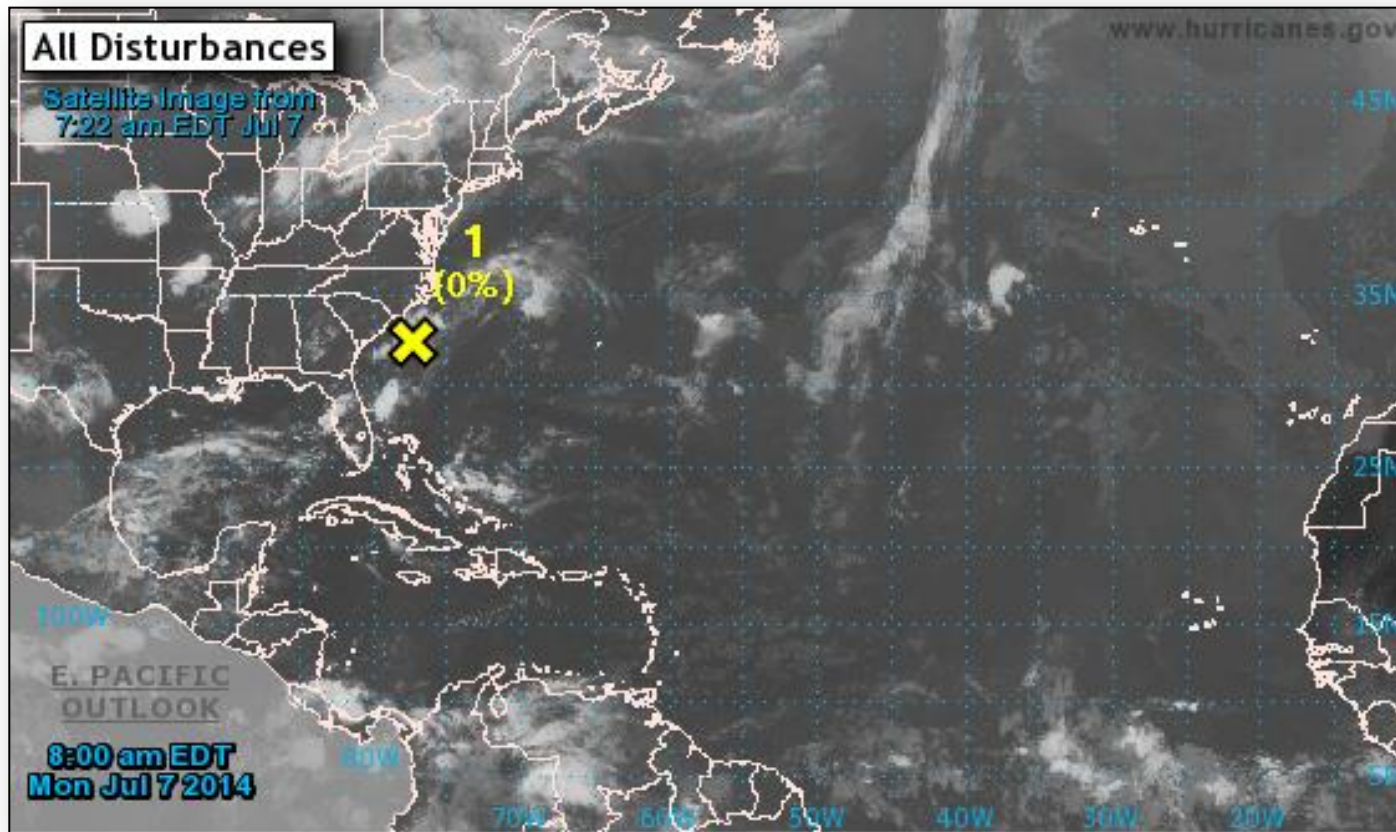
**FEMA Readiness:** No new activity

**Declaration Activity:** Major Disaster Declaration Request – South Dakota

# Tropical Outlook – Atlantic



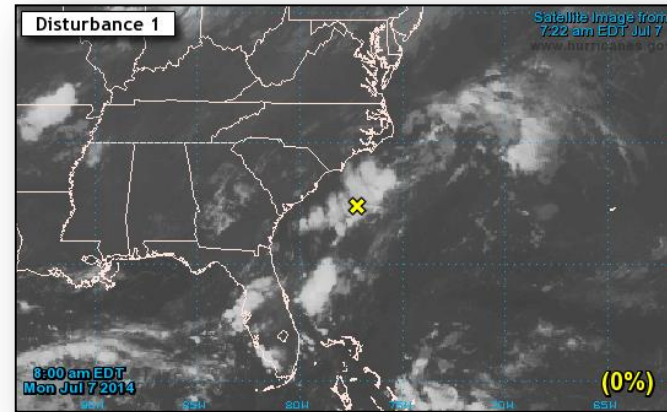
FEMA



# Atlantic – Disturbance 1

## As of 8:00 a.m. EDT

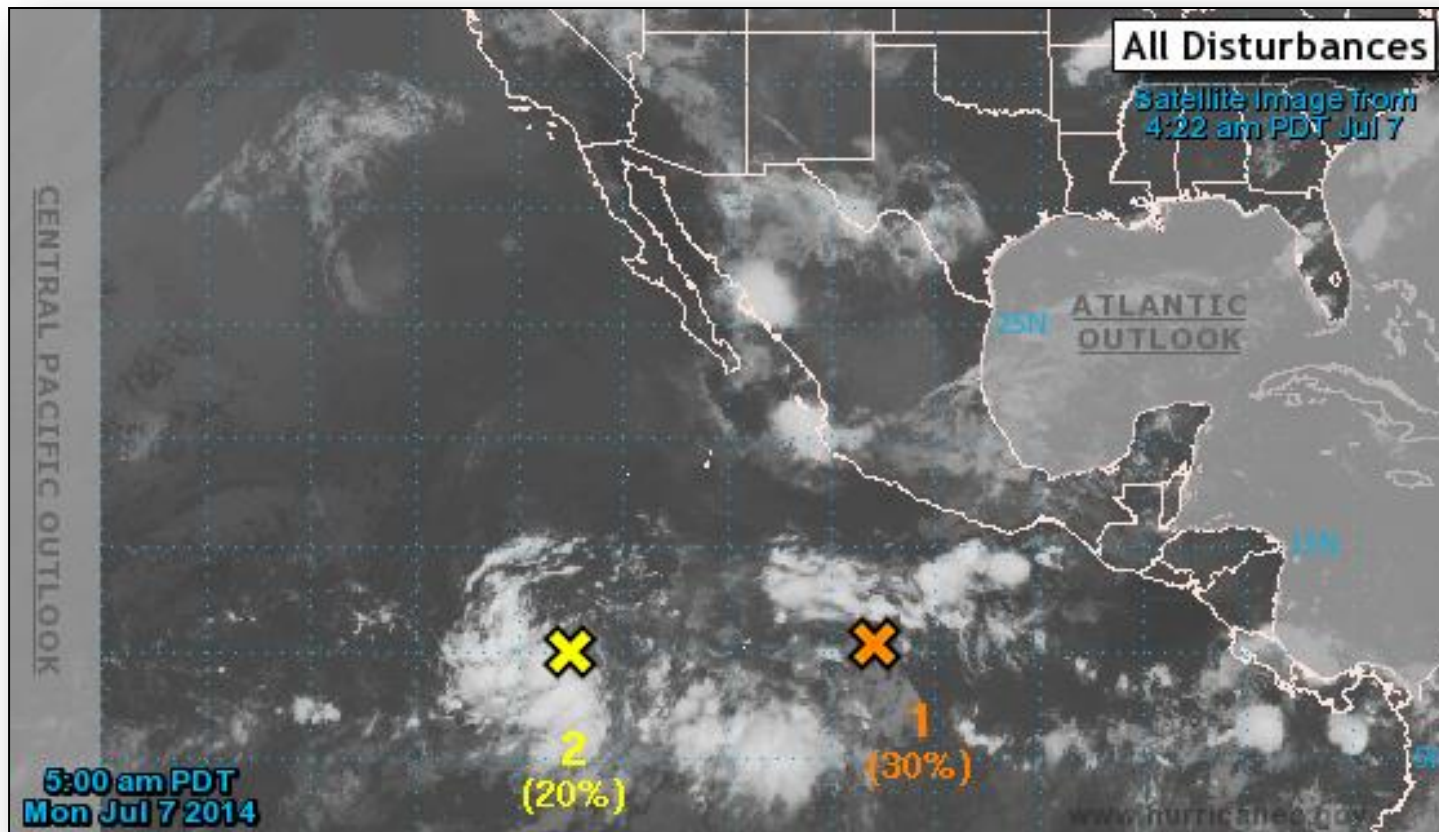
- Weak surface trough located offshore of the coast of the Carolinas
- Producing widespread cloudiness, showers and few thunderstorms
- Moving NE at 15 mph
- Strong upper-level winds likely to prevent significant development
- Formation chance
  - through 48 hours – Low near 0%
  - through 5 days – Low near 0%



# Tropical Outlook – Eastern Pacific



FEMA

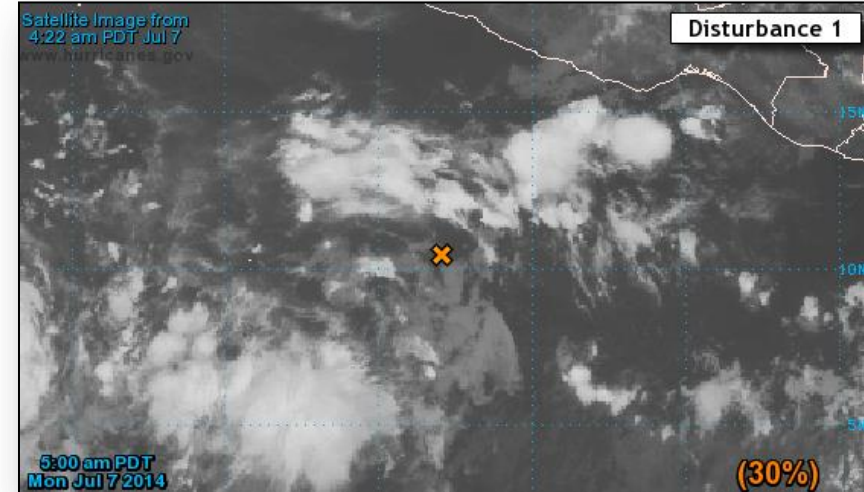




# Eastern Pacific – Disturbance 1

## As of 8:00 a.m. EDT

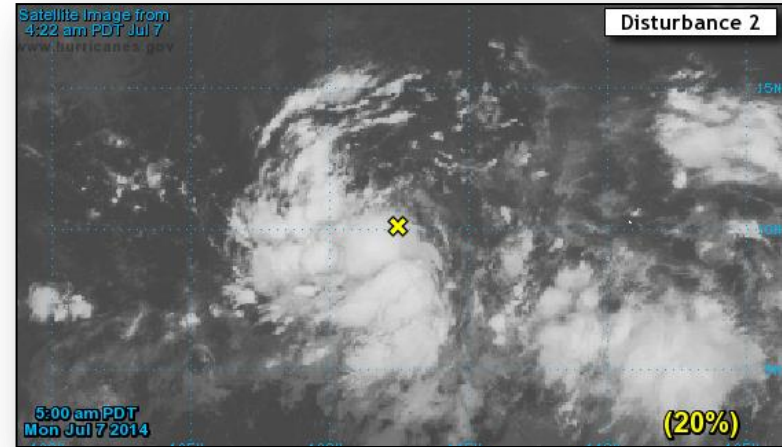
- Low pressure located several hundred miles SW of Acapulco, Mexico
- Producing disorganized showers and thunderstorms
- Moving W or WNW at 10-15 mph
- Gradual development possible over the next few days
- Formation chance
  - through 48 hours – Medium 30%
  - through 5 days – Medium 40%



# Eastern Pacific – Disturbance 2

## As of 8:00 a.m. EDT

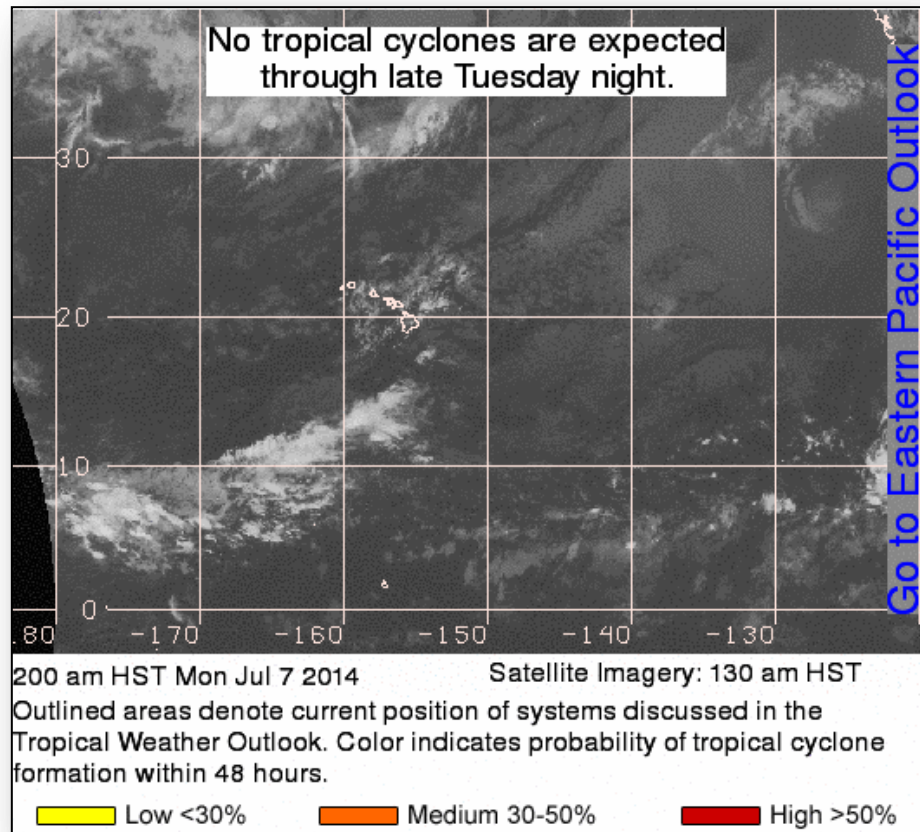
- Small low pressure located several hundred miles SSW of southern tip of Baja California, Mexico
- Producing disorganized showers and thunderstorms
- Moving W or WNW at 10-15 mph
- Development should be slow to occur next few days
- Formation chance
  - through 48 hours – Low 20%
  - through 5 days – Low 20%



# Central Pacific



FEMA





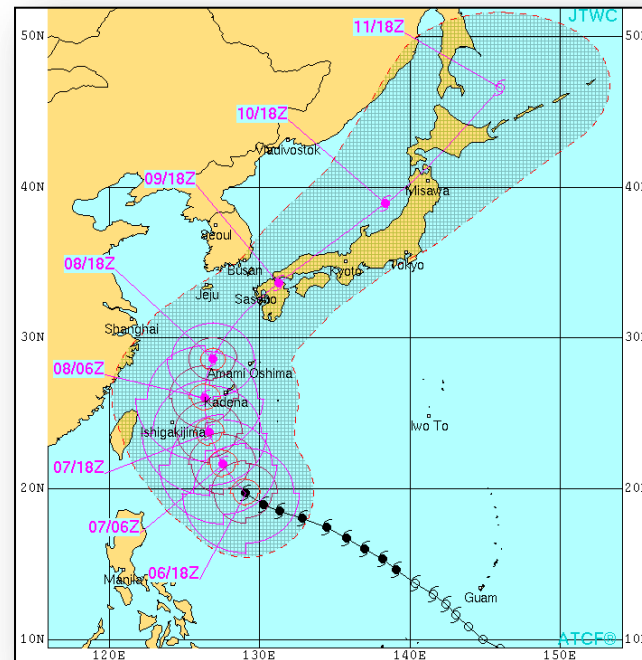
# Western Pacific – Super Typhoon 08W Neoguri



FEMA

## As of 4:00 a.m. EST (Warning #18)

- Located 422 miles S of Kadena AB, Okinawa, Japan
- Moving NW at 13 mph over past six hours
- Max sustained winds 155 mph, w/ gusts to 190 mph (Cat 4)
- Maximum significant wave height is 39 feet
- No requests for FEMA assistance



# Disaster Requests & Declarations



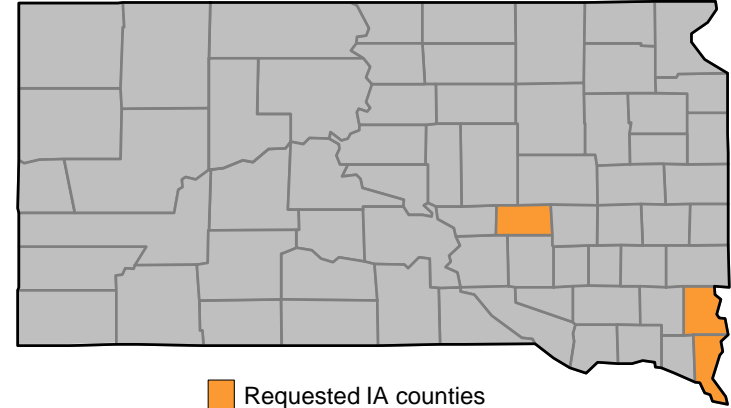
Declaration Requests in Process		Requests APPROVED (since last report)	Requests DENIED (since last report)
2	Date Requested	0	0
SD – DR Severe Storms, Flooding, and Tornadoes	July 2, 2014		
NY – DR Severe Storms and Flooding	June 16, 2014		

# Major Disaster Declaration Request – SD



## July 2, 2014

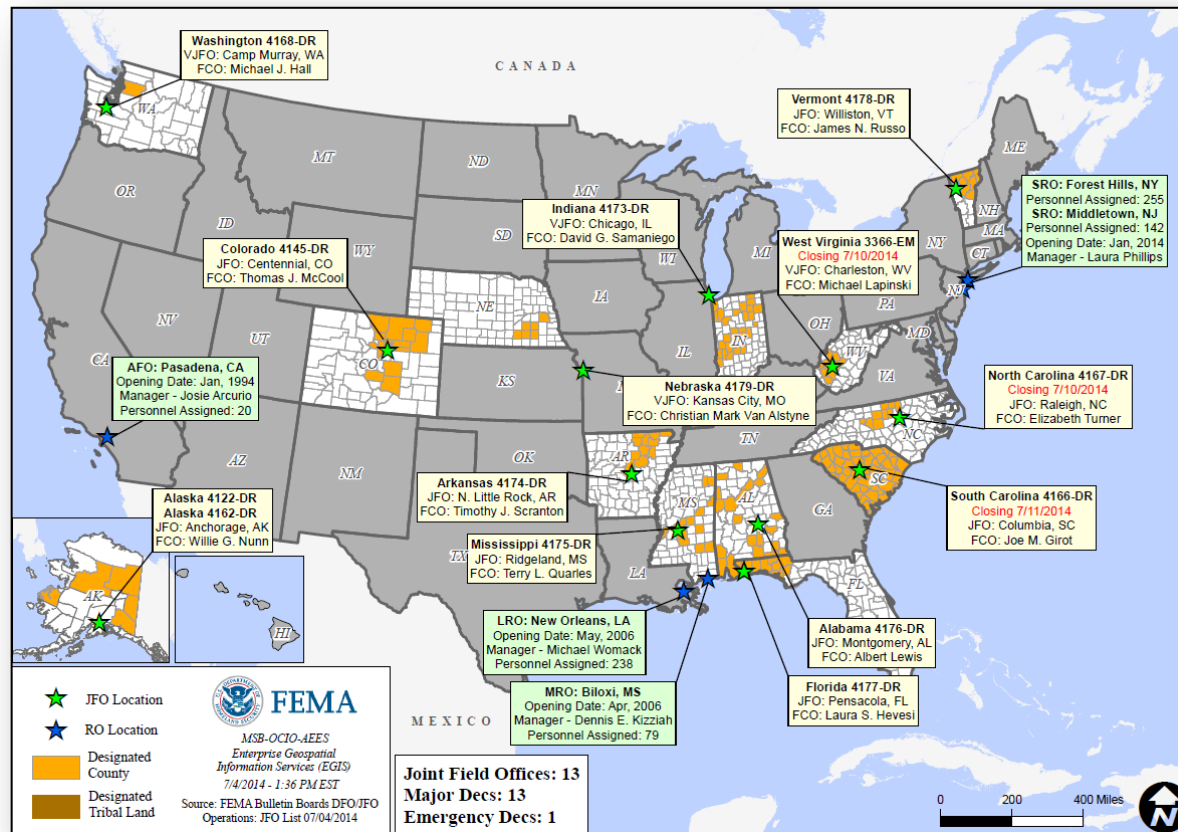
- Request for Major Disaster Declaration for State of South Dakota
- For severe storms, flooding, & tornadoes that occurred June 13-20, 2014
- Requesting:
  - Individual Assistance for 3 counties
  - Hazard Mitigation statewide



# Open Field Offices as of July 7, 2014



FEMA



# Joint Preliminary Damage Assessments



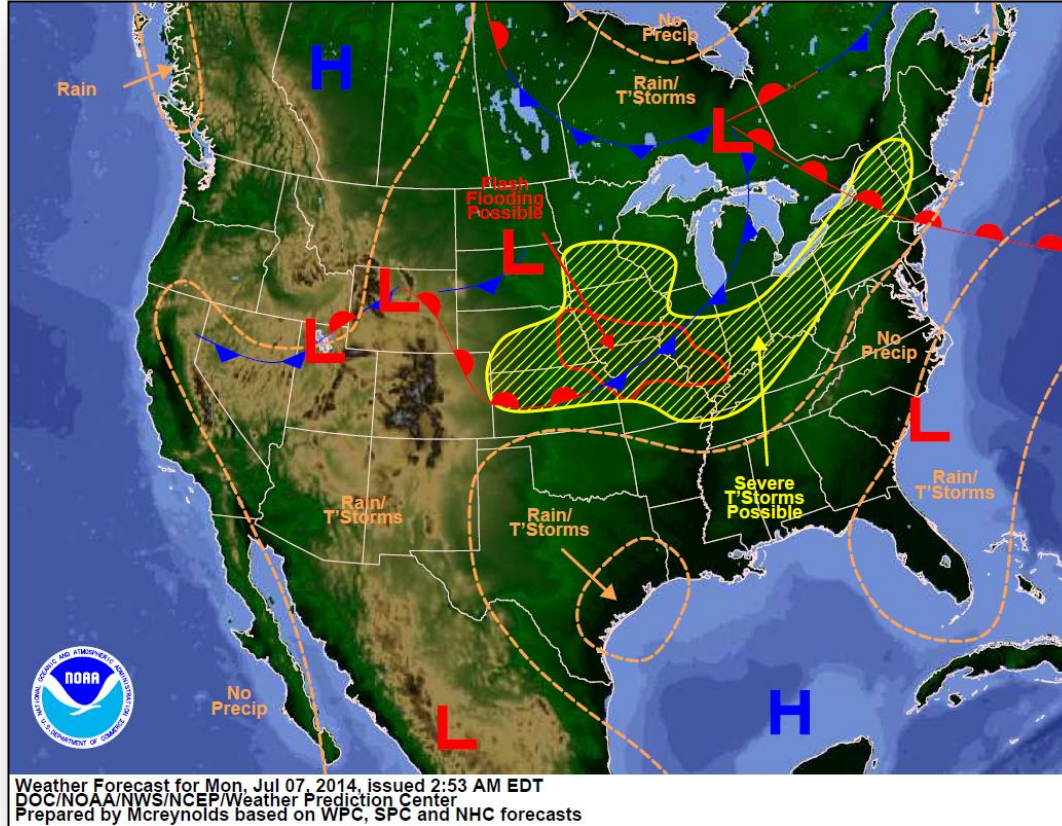
Region	State / Location	Event	IA/PA	Number of Counties		Start – End
				Requested	Complete	
V	MN	Severe Storms & Flooding June 11	PA	49 counties & 1 tribe	0	7/1 – TBD
VII	IA	Flooding June 13 & continuing	PA	26	26	6/27 – 7/3
	NE	Severe Storms & Flooding June 1-4, 2014	PA	18	0	7/7 – TBD
	NE	Severe Weather June 14-21	IA	5	5	6/25 – 6/26
			PA	12	12	6/30 – 7/3
VIII	SD	Flooding & Tornado damage June 13 & continuing	PA	12 counties 1Tribe	0	7/14 – TBD
	*SRST	Flooding & Tornado damage June 13 & continuing	PA	1Tribe	0	7/14-TBD

\*SRST – Standing Rock Sioux Tribe

# National Weather Forecast

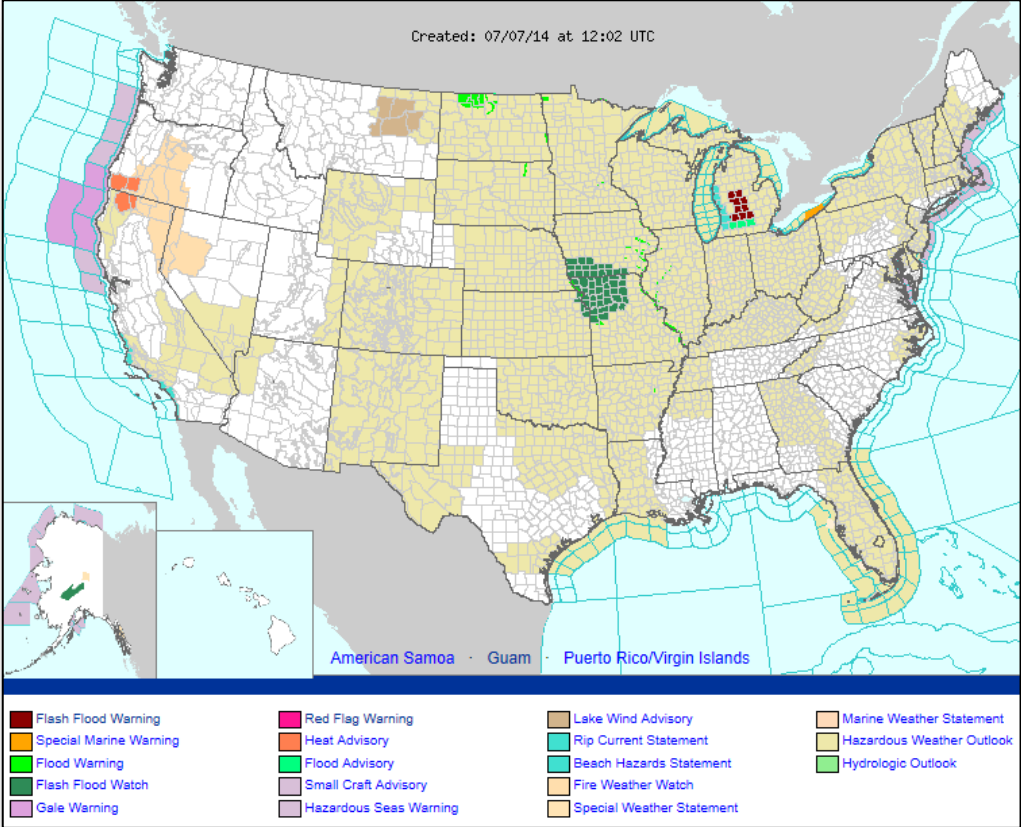


FEMA





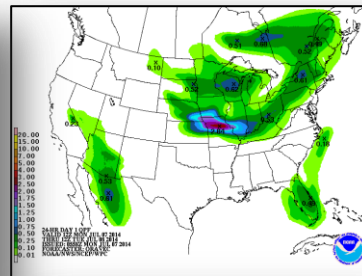
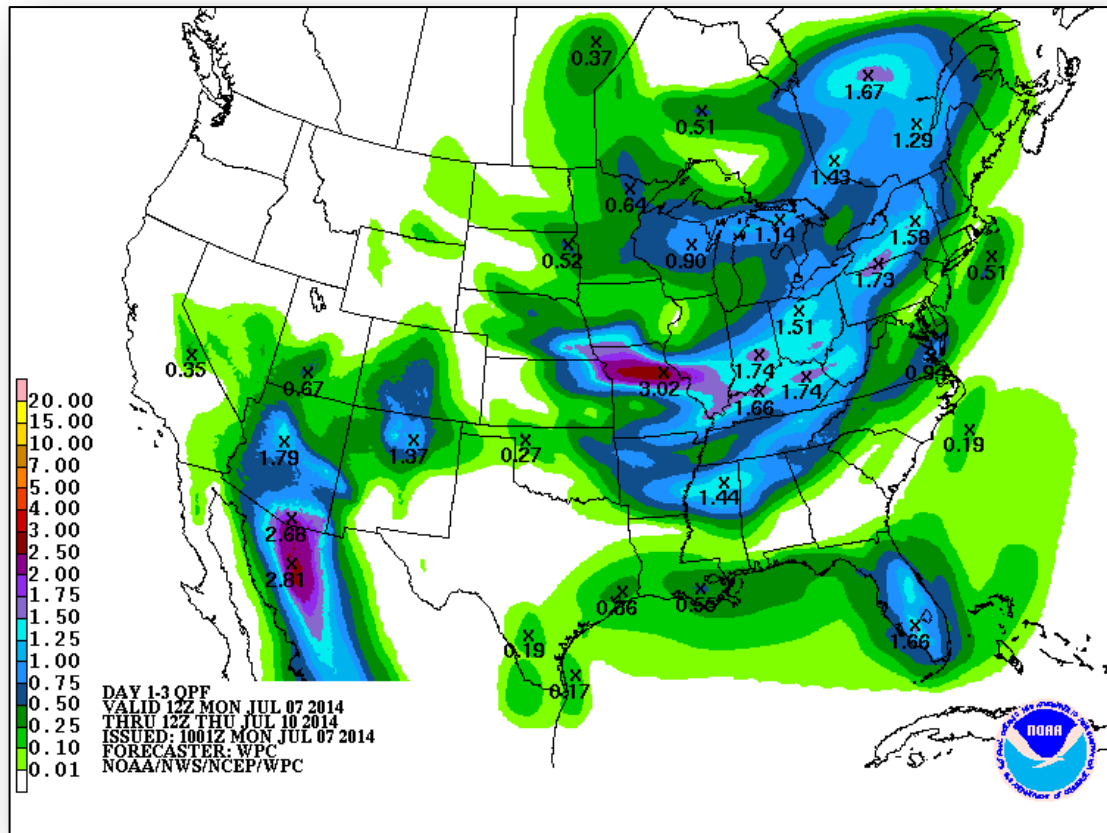
# Active Watches/Warnings



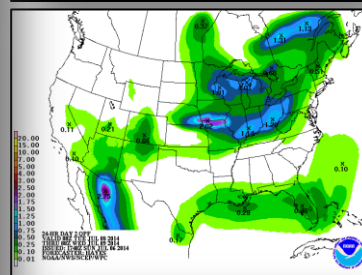


FEMA

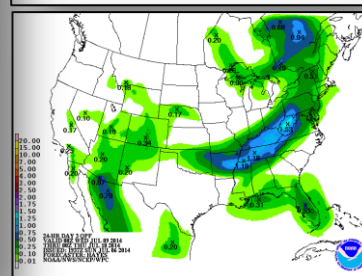
# Precipitation Forecast – 3 Day



Day 1



Day 2

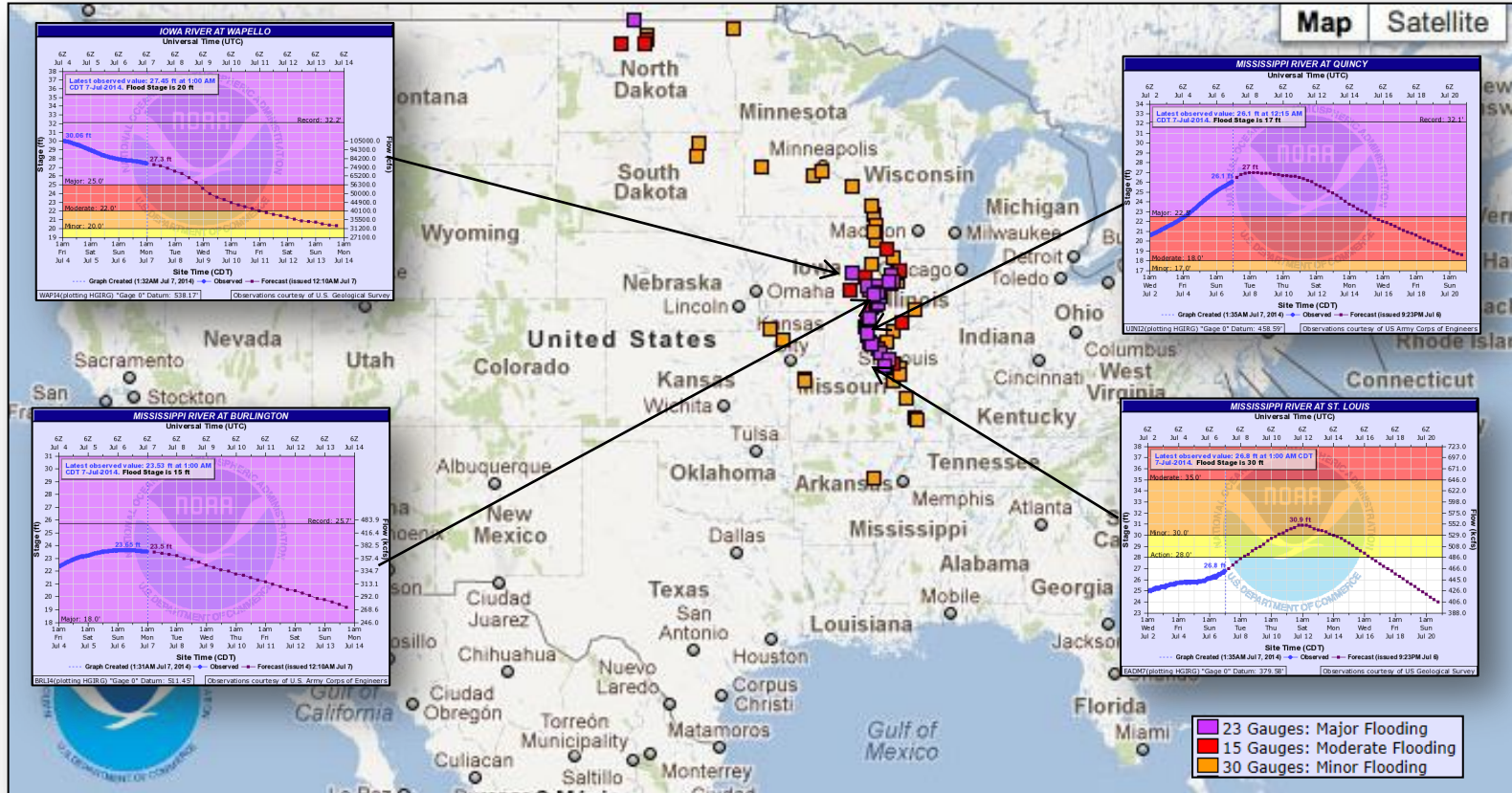


Day 3

# River Forecast



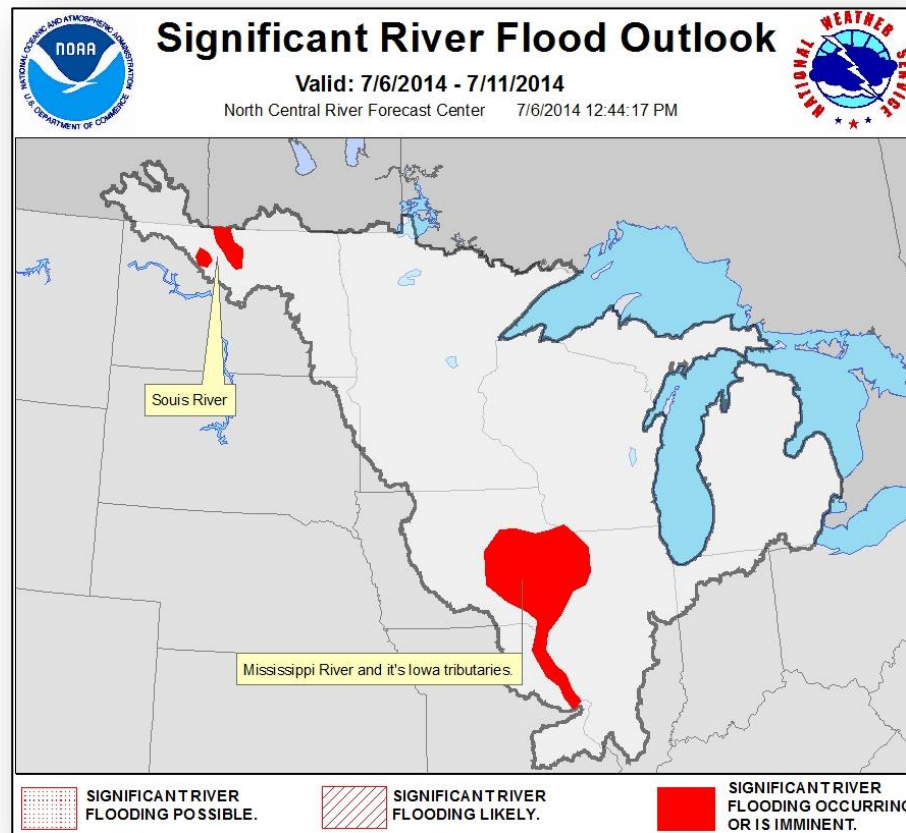
FEMA



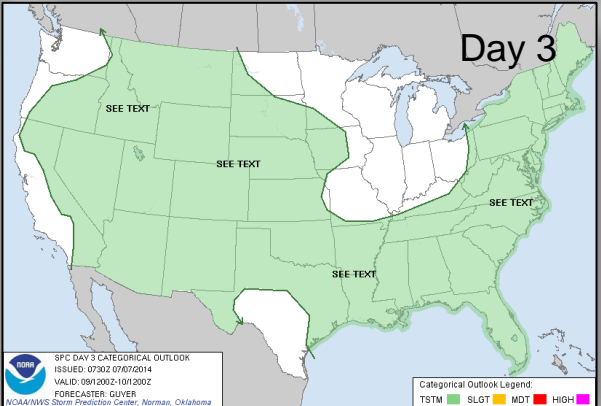
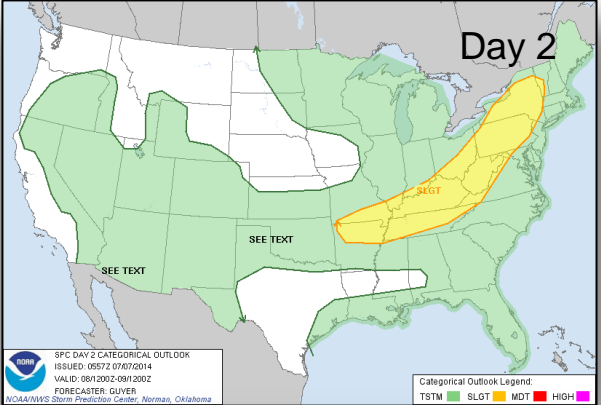
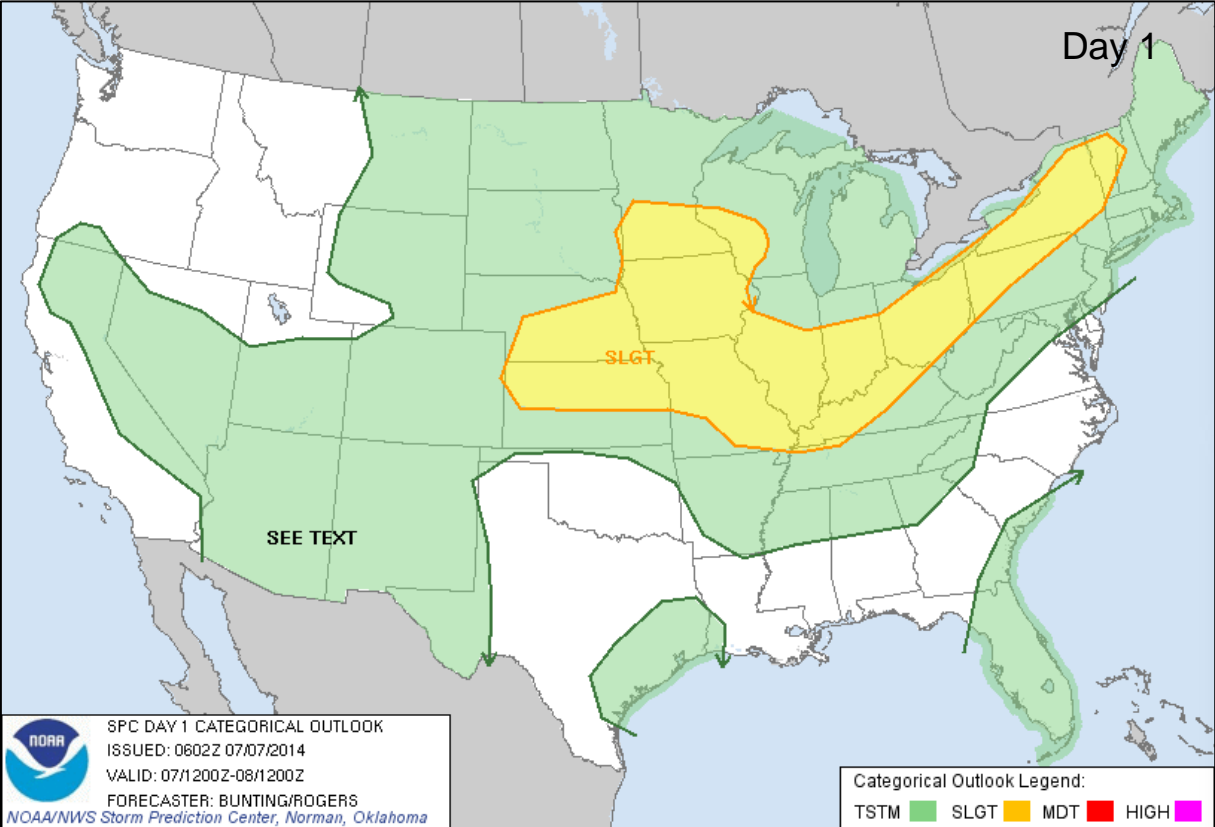
# Significant River Flood Outlook, July 6 – 11



FEMA



# Convective Outlook, Days 1 – 3

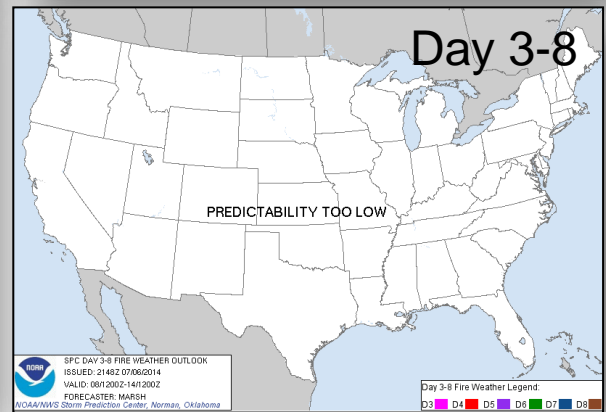
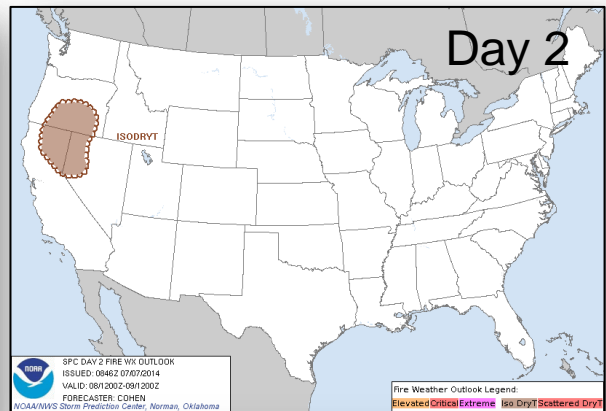
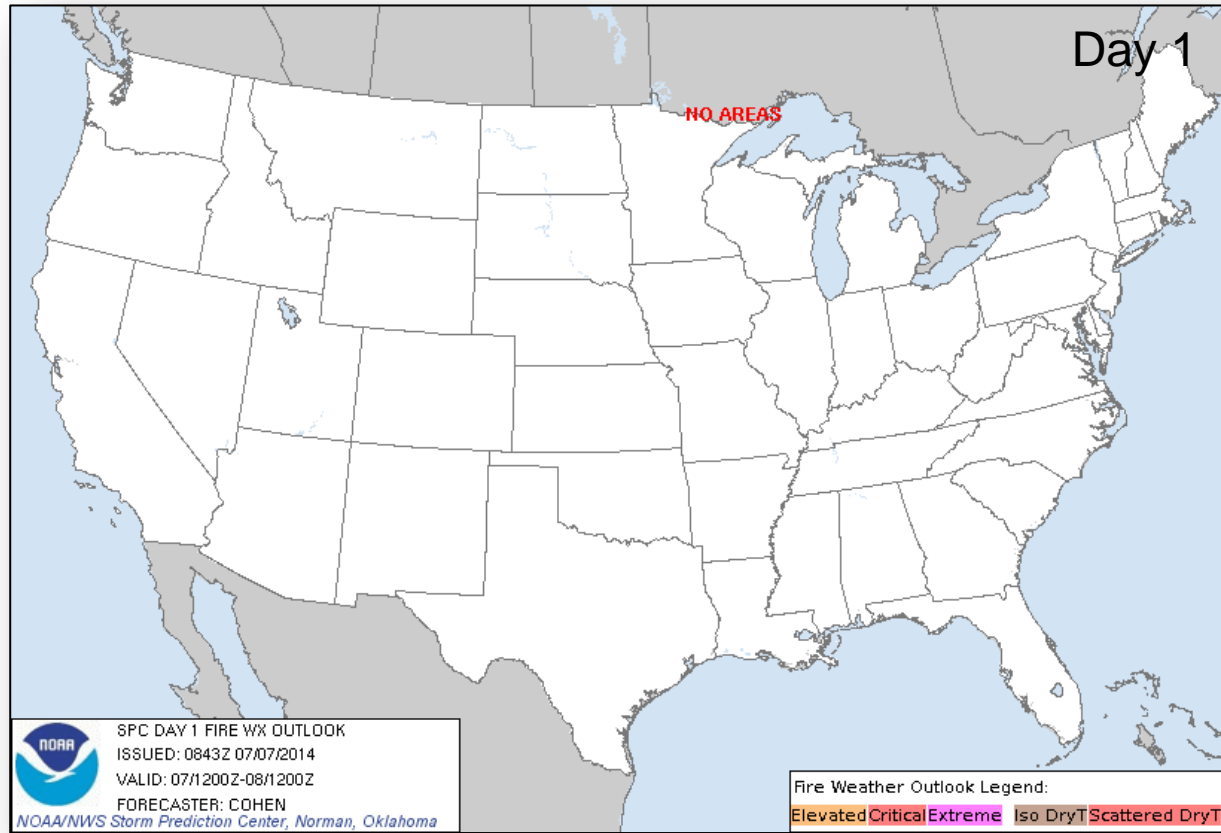






FEMA

# Critical Fire Weather Areas – Days 1-8

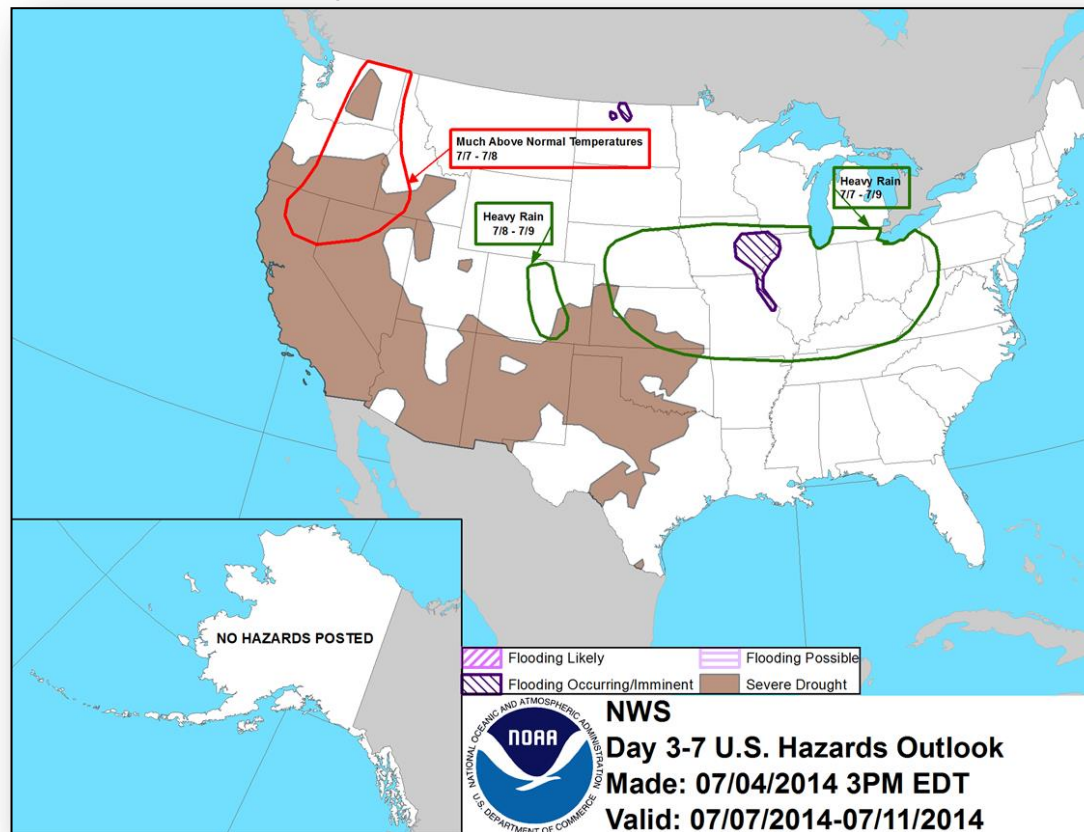




# Hazard Outlook: July 7 – 11



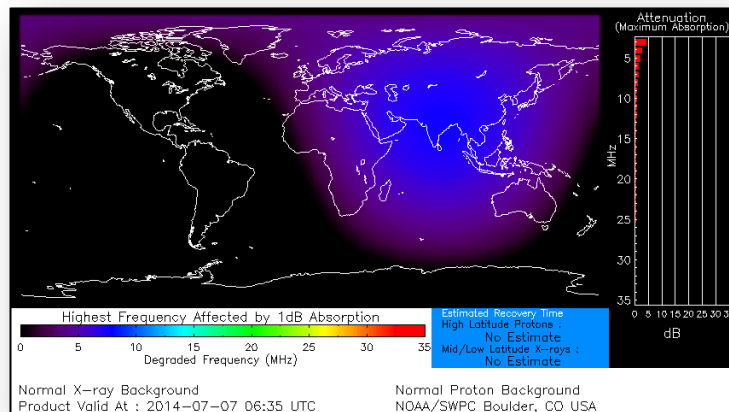
FEMA



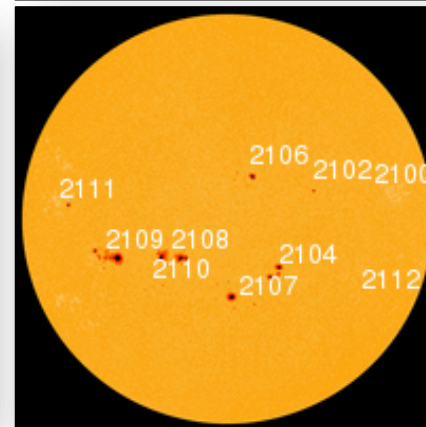
# Space Weather

NOAA Scales Activity (Range: 1/minor to 5/extreme)	Past 24 Hours	Current	Next 24 Hours
Space Weather Activity:	None	None	Minor
• Geomagnetic Storms	None	None	None
• Solar Radiation Storms	None	None	None
• Radio Blackouts	None	None	R1

## HF Communication Impact



## Sunspot Activity



# FEMA Readiness – Deployable Teams/Assets



Deployable Teams/Assets									
Resource	Status	Total	Available		Partially Available	Not Available	Detailed Deployed Activated	Comments	Rating Criterion
FCO		39	11	28%	0	2	26		OFDC Readiness: <u>FCO</u> <u>Green</u> <u>Yellow</u> <u>Red</u> Type 1   3+            2            1 Type 2   4+            3            2 Type 3   4             3            2  <u>FDRC</u> 3            2            1
FDRC		10	4	40%	0	0	6		
US&R		28	27	96%	0	1	0	• NM-TF1 (Red for personnel shortages)	• Green = Available/FMC • Yellow = Available/PMC • Red    = Out-of-Service • Blue    = Assigned/Deployed
National IMAT		3	2	67%	0	0	1	• National-IMAT West deployed to DC (NRCC)	• Green: 3 avail • Yellow: 1-2 avail • Red: 0 avail ( <i>Individual N-IMAT red if 50% of Section Chiefs and/or Team Leader is unavailable for deployment.</i> )
Regional IMAT		13	5	38%	4	3	1	<u>Partially Mission Capable (PMC):</u> • Region II, III, VI (1) & VI (2 ) <u>Not Mission Capable (NMC):</u> • Region V, VII, IX for Personnel shortages <u>Deployed</u> •     Region X to WA	• Green: 7 or more avail • Yellow: 4 - 6 teams available • Red: > 8 teams deployed/unavailable  <i>R-IMAT also red if TL Ops/Log Chief is unavailable and has no qualified replacement.</i>
MCOV		55	45	82%	0	8	2	2 in route to Edinburg, TX	• Green = 80 – 100% avail • Yellow = 60 – 79% avail • Red = 59% or below avail • Readiness remains 95%

# FEMA Readiness – National/Regional Teams



National/Regional Teams									
Resource	Status	Total	Available		Partially Available	Not Available	Deployed/ Activated	Comments	Rating Criterion
NWC		5	5	100%	0	0	24/7	Enhanced Watch (dayshift)	• Green = FMC • Yellow = PMC • Red = NMC
NRCC		2	337	87%	0	50	Not Activated		
HLT		1	N/A	N/A	0	1	Activated	Activated	
DEST							Not Activated		
RRCCs		10	10	100%	0	0	1	Region V: Level III (day only)	
RWCs/MOCs		10	10	100%	0	0	24/7		



# FEMA

**FEMA's mission is to support our citizens and first responders to ensure that as a nation we work together to build, sustain, and improve our capability to prepare for, protect against, respond to, recover from, and mitigate all hazards.**