



# **FEMA**

## **Daily Operations Briefing**

**Monday, July 14, 2014**

**8:30 a.m. EDT**

# Significant Activity: July 11 – 14



**Significant Events:** Wildfire activity – WA, CA & OR

## **Tropical Activity:**

- Atlantic – Tropical cyclone activity not expected next 48 hours
- Eastern Pacific – Disturbance 1: 10%
- Central Pacific – Disturbance 1: 10%

## **Significant Weather:**

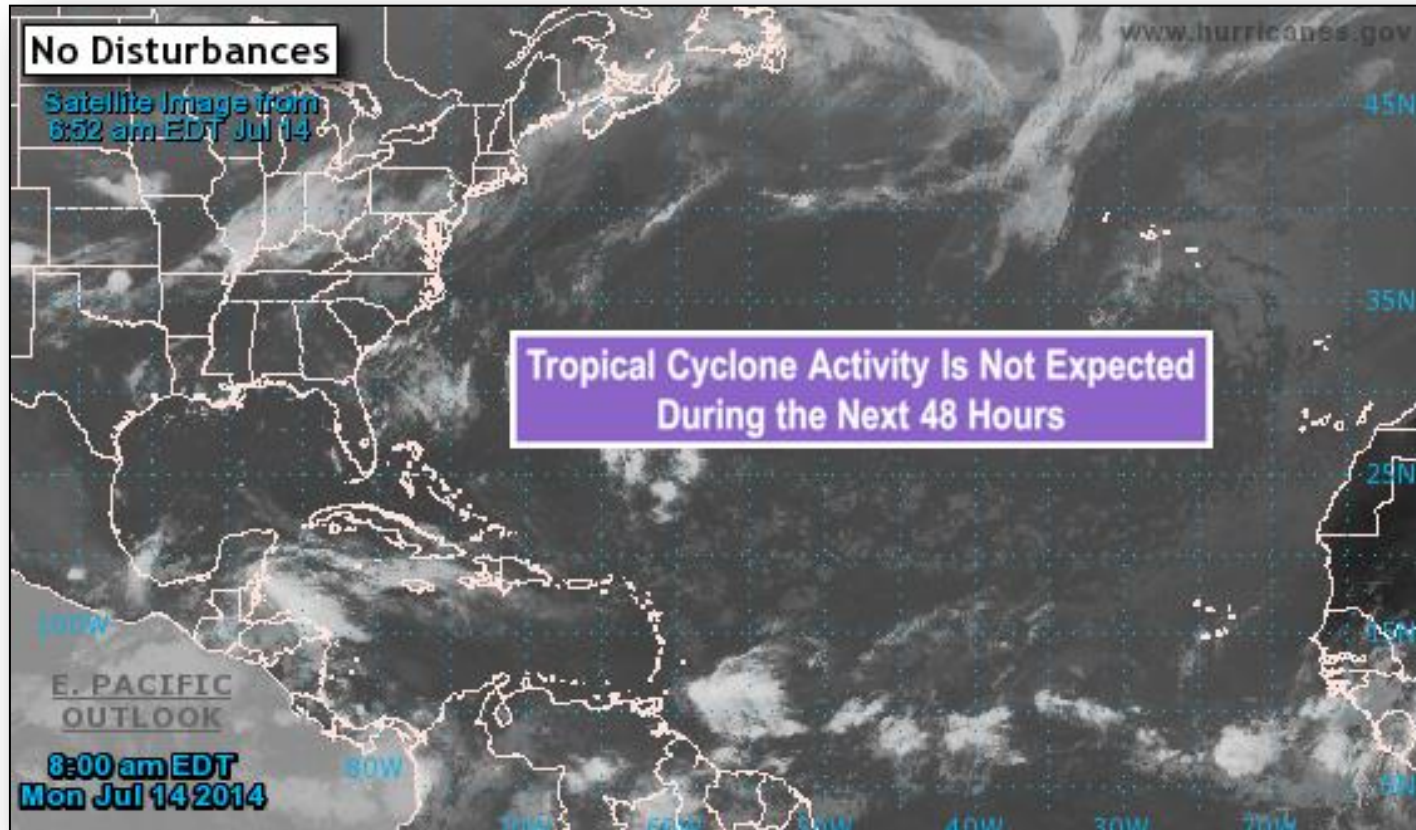
- Slight risk for severe thunderstorms will extend from the Ozarks into New England
  - Primary threats include heavy rain, large hail, gale force winds, and possible flash flooding
- Heat advisories – Portions of OR & WA
- Isolated to scattered dry thunderstorms – Central Great Basin to Northern Intermountain West
- Critical Fire Weather area – Central/southern ID
- Red Flag Warnings: WA & ID
- Space Weather Storms: Past 24hrs – None; Next 24hrs: Minor (R1); radio blackouts likely

**FEMA Readiness:** No new activity

# Tropical Outlook – Atlantic



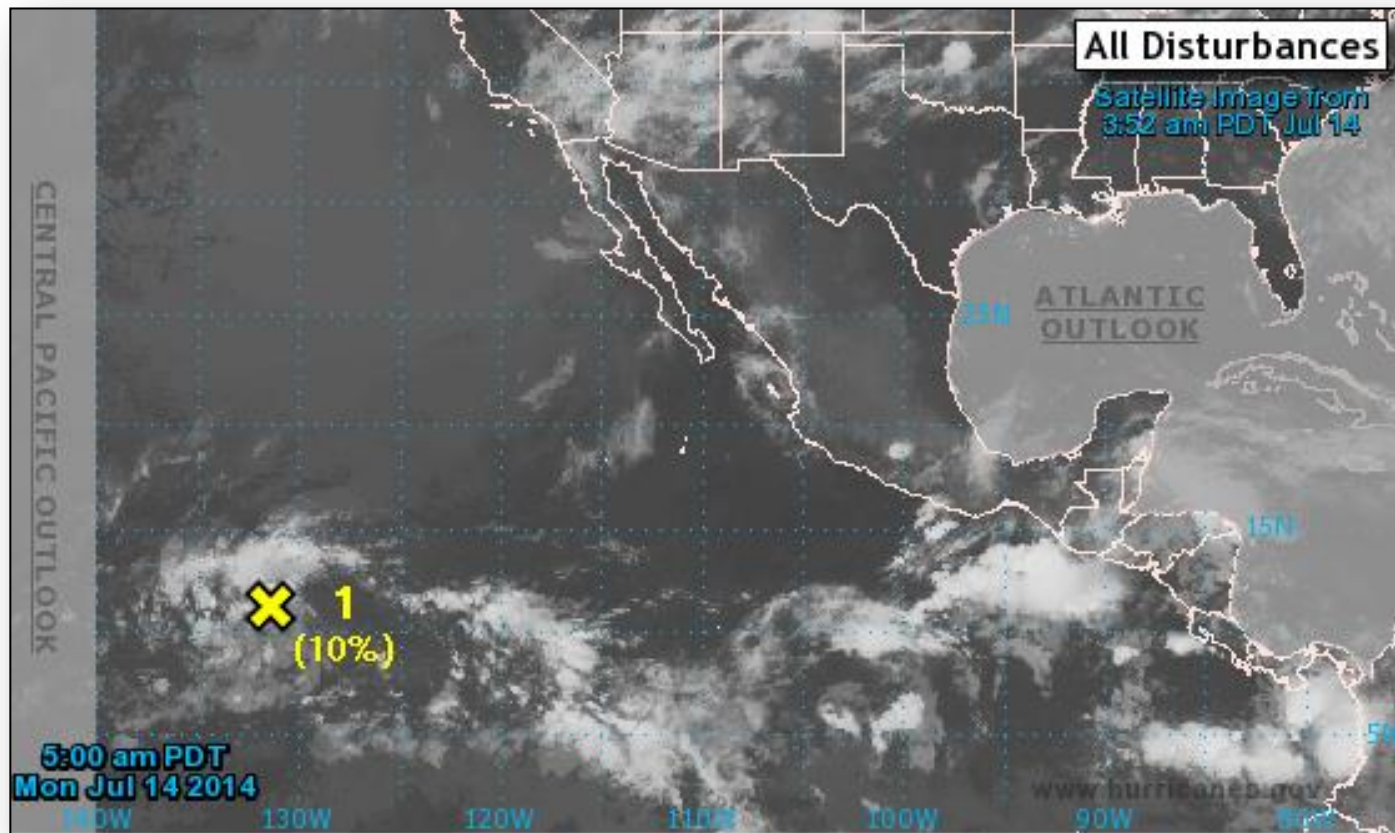
FEMA



# Tropical Outlook – Eastern Pacific



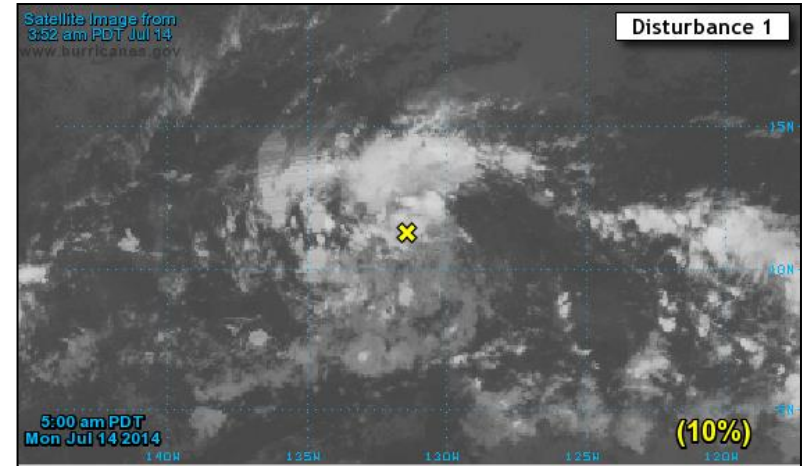
FEMA



# Eastern Pacific – Disturbance 1

## As of 8:00 a.m. EDT

- Large area of disturbed weather approx. 1,650 miles WSW of southern tip of Baja California peninsula
- Moving WNW at 10-15 mph
- Some slow development possible over next few days
- Chance of development:
  - Next 48 hours: Low (10%)
  - Next 5 days: Low (20%)

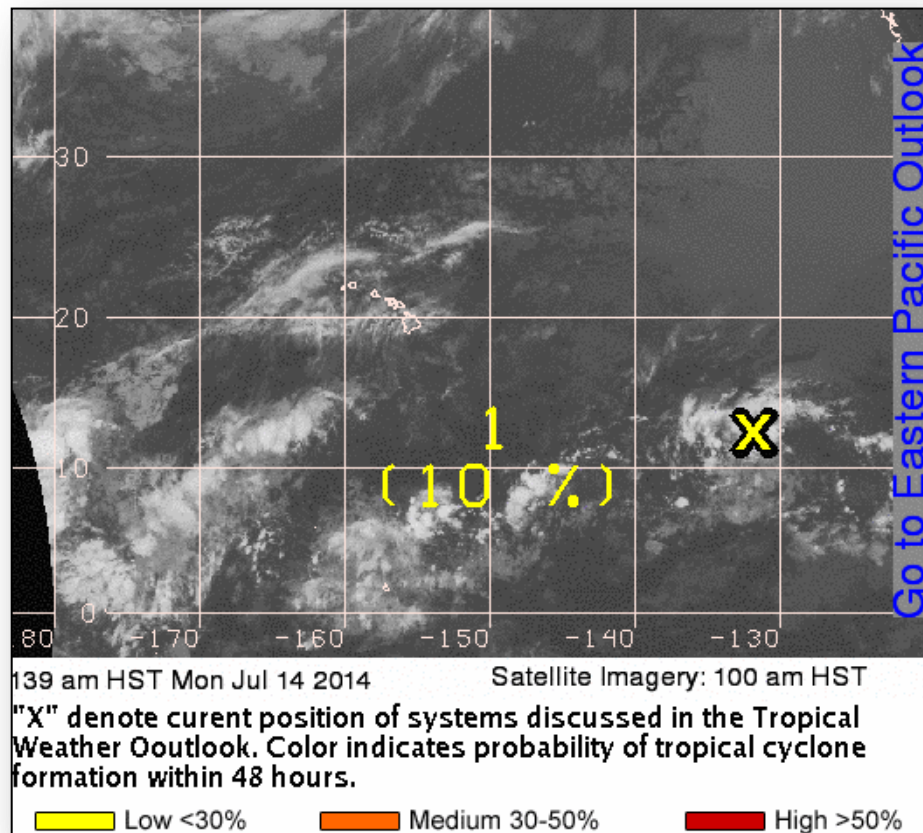




# Tropical Outlook – Central Pacific



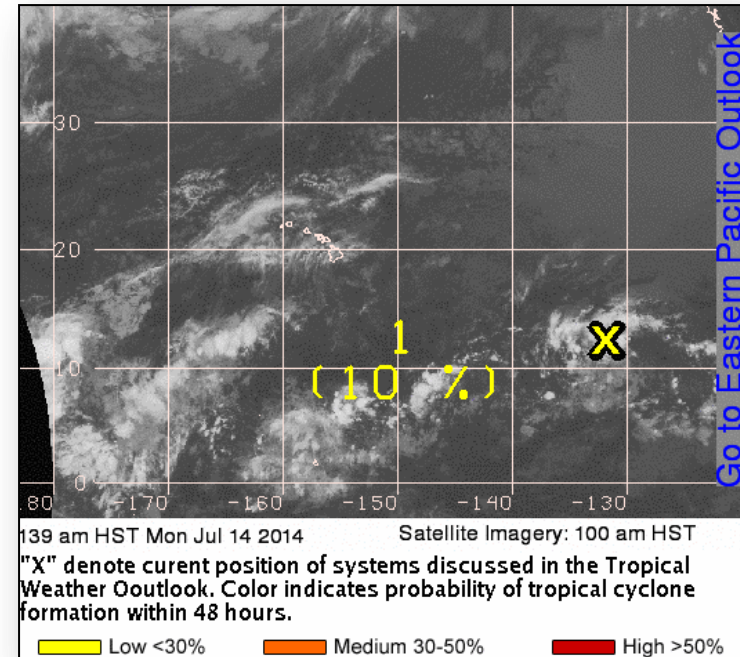
FEMA



# Central Pacific – Disturbance 1

## As of 8:00 a.m. EDT

- Large area of disturbed weather approx. 1,650 miles ESE of Hilo, Hawaii
- Moving WNW at 10-15 mph
- Some slow development possible over next few days
- Chance of development:
  - Next 48 hours: Low (10%)
  - Next 5 days: Low (20%)



# Moccasin Hill Fire – Oregon



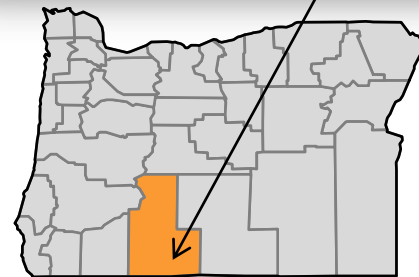
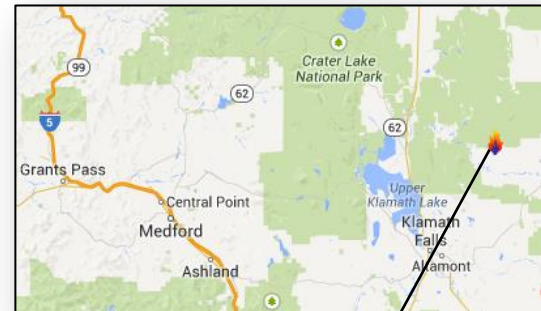
Fire Name	Location	Acres burned	% Contained	Est. Full Containment	FMAG	Structures Lost / Threatened	Fatalities / Injuries
Moccasin Hill	Klamath County	2,000	0%	N/A	Not Requested	Unk / Unk	0 / 0

## Situation

- Began July 13, on heavily timbered private land
- Located approx. 4 miles north of Sprague River, OR (pop. 527)
- Klamath County Sheriff Department evacuated over 100 people
- Unknown number of residences destroyed, unknown number threatened
- One Red Cross shelter; One occupant (*ARC Shelter report July 14*)

## Response

- OR Department of Forestry IMT 2 dispatched to assume command today
- 73 personnel engaged in fire-fighting efforts
- OR EOC remains at Normal Operations
- FEMA Region X is at Watch/Steady State
- No request for FEMA assistance



 Klamath County, OR



# Wildfire Summary



Fire Name (County)	FMAG #	Acres burned	% Contained Est. Containment date	Evacuations (Residents)	Structures Threatened	Structures Destroyed	Fatalities / Injuries
Washington (1)							
Mills Canyon (Chelan County)	FEMA-5059-FM	22,571 (+748)	25% (+3%)	Mandatory/ Voluntary	571 (+43)	3	0/0
California (1)							
Bully Incident (Shasta County)	Not Requested	4,000 (+1,070)	15% (+5)	Lifted	65	18 (+12)	0/2 (+2)
Oregon (1)							
Moccasin Hill Fire (Klamath County)	Not Requested	2,000	0%	Mandatory	Unk	Unk	0/0

# Disaster Requests & Declarations

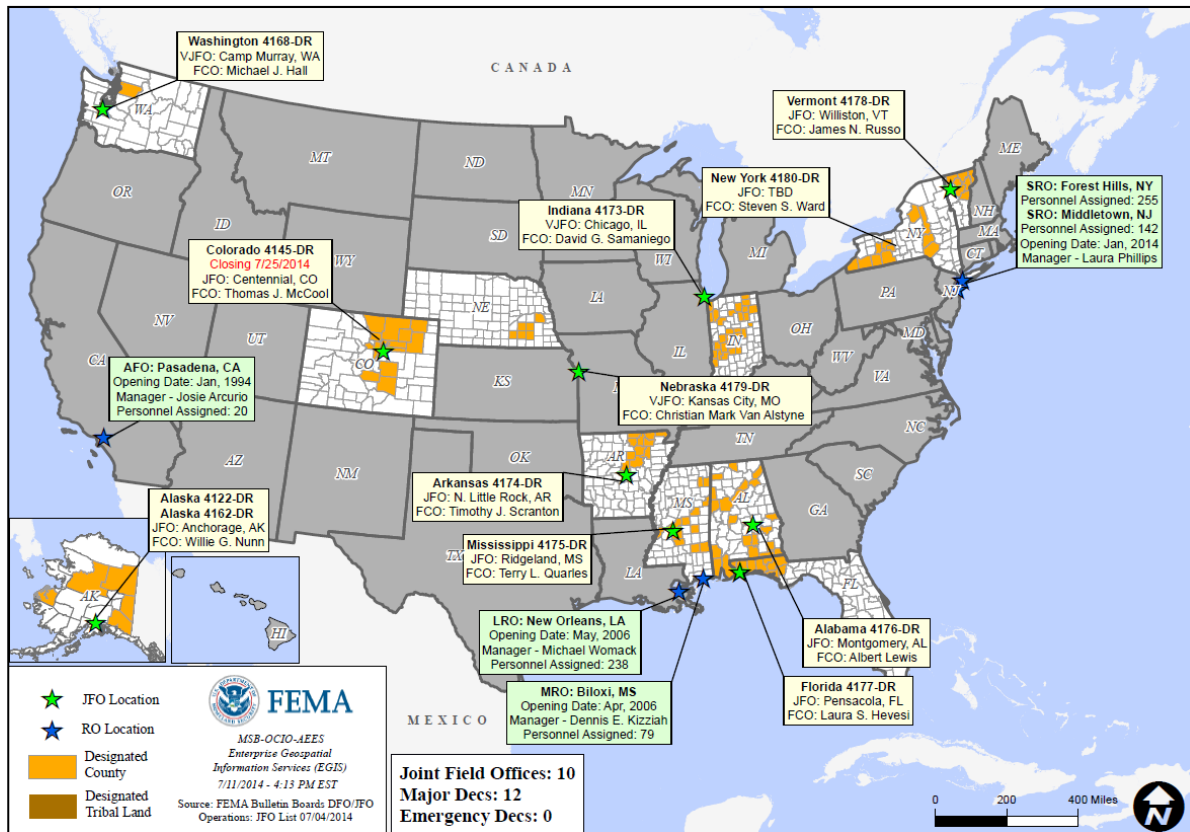


Declaration Requests in Process		Requests APPROVED (since last report)	Requests DENIED (since last report)
3	Date Requested	0	0
NH – DR (Appeal) Severe Storms and Flooding	July 3, 2014		
IA – DR Severe Storms, Tornadoes, Straight-Line Winds, and Flooding	July 7, 2014		
MN – DR Severe Storms, Straight-line Winds, Flooding, Landslides, and Mudslides	July 9, 2014		

# Open Field Offices as of July 14, 2014



FEMA



# Joint Preliminary Damage Assessments



Region	State / Location	Event	IA/PA	Number of Counties		Start – End
				Requested	Complete	
IV	TN	Severe Weather & Flooding June 5-10	PA	35	0	7/15 - TBD
V	MN & RLR*	Severe Storms & Flooding June 11	PA	49 counties & 1 tribe	8	7/1 – TBD
VII	NE	Severe Storms & Flooding June 1-4	PA	18	3	7/7 – TBD
VII	IA	Severe Storms & Flooding June 26 & continuing	PA	20	0	7/14 - TBD
VIII	SD	Flooding & Tornado damage June 13 & continuing	PA	12 counties	0	7/14 – TBD
VIII	SRST** (SD)	Flooding & Tornado Damage June 13 & continuing	PA	1 Tribe	0	7/14 – TBD
VIII	SRST** (ND)	Flooding & Tornado Damage June 13 & continuing	PA	1 Tribe	0	7/14 – TBD
VIII	ND	Severe Storms & Flooding June 13 & continuing	PA	8	0	7/21– TBD

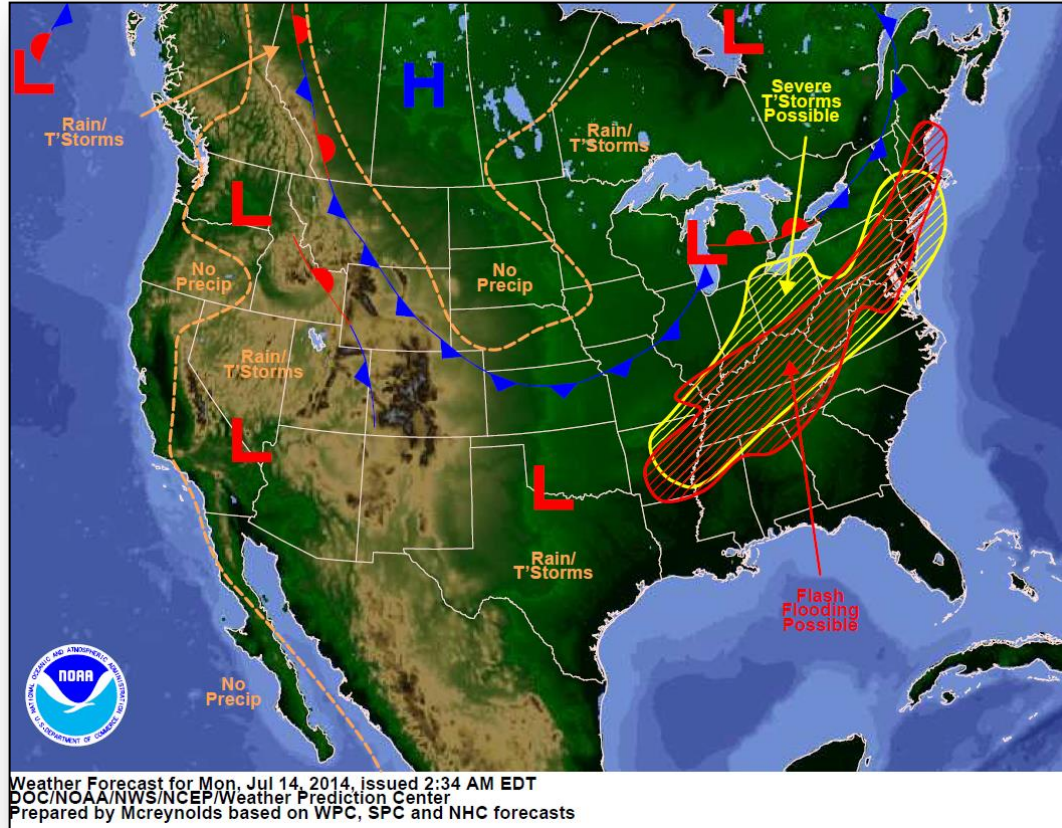
\*RLR – Red Lake Reservation

\*\*SRST – Standing Rock Sioux Tribe

# National Weather Forecast

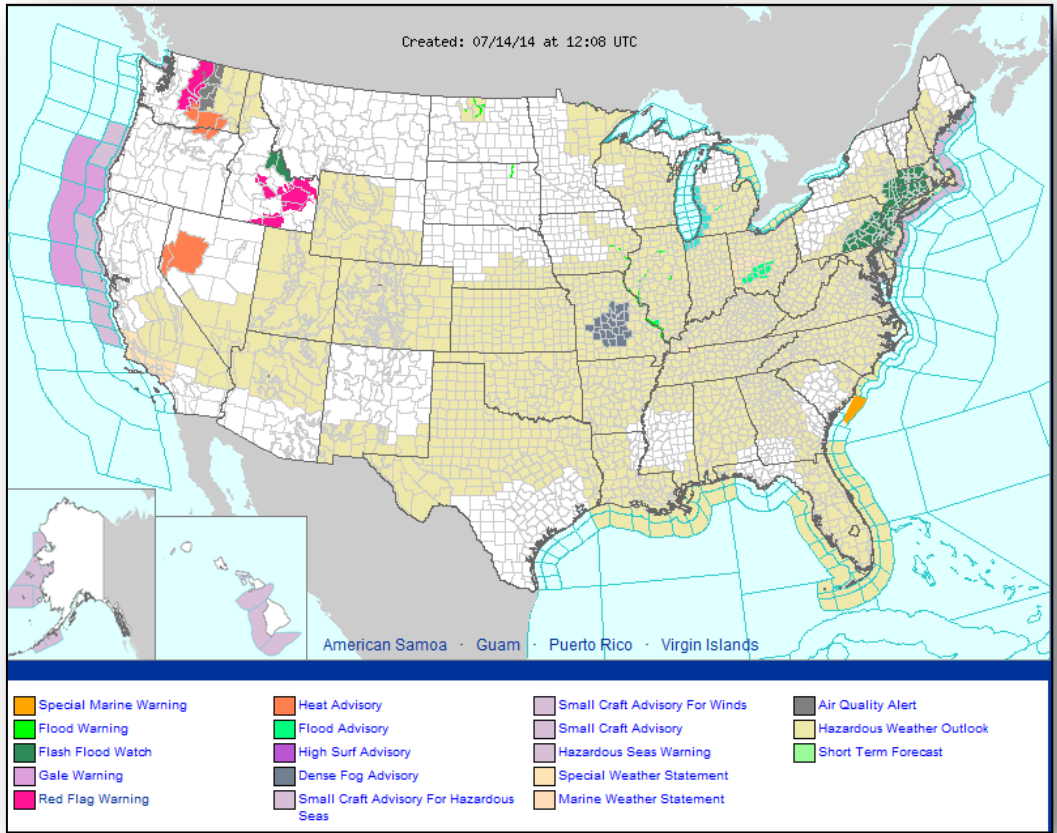


FEMA





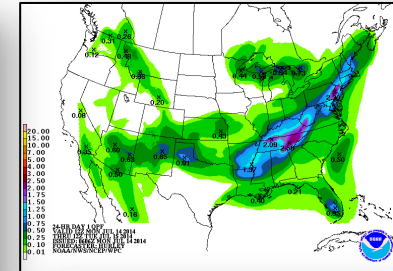
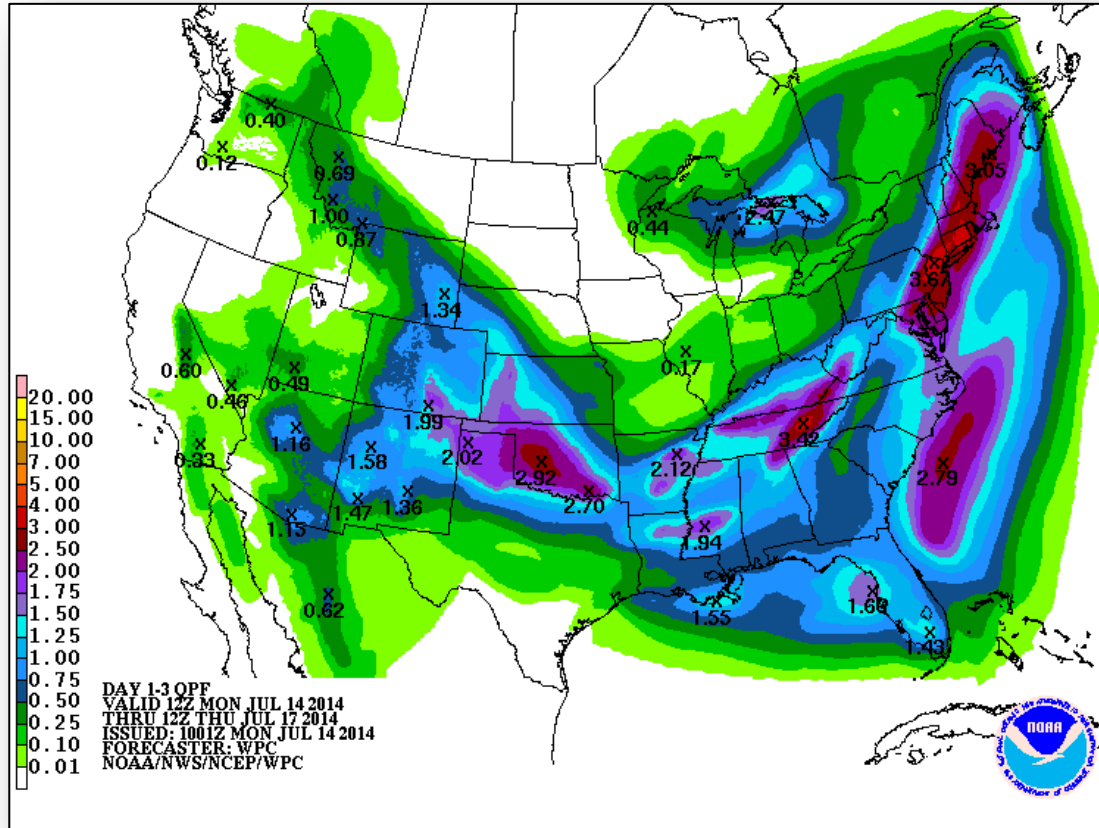
# Active Watches/Warnings



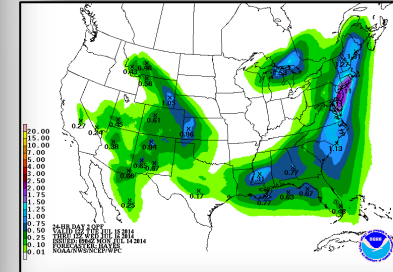
# Precipitation Forecast – 3 Day



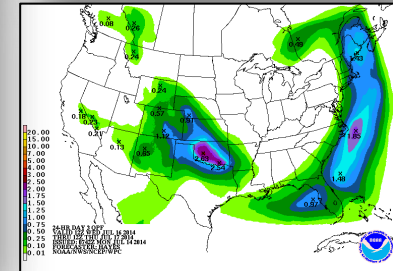
FEMA



Day 1

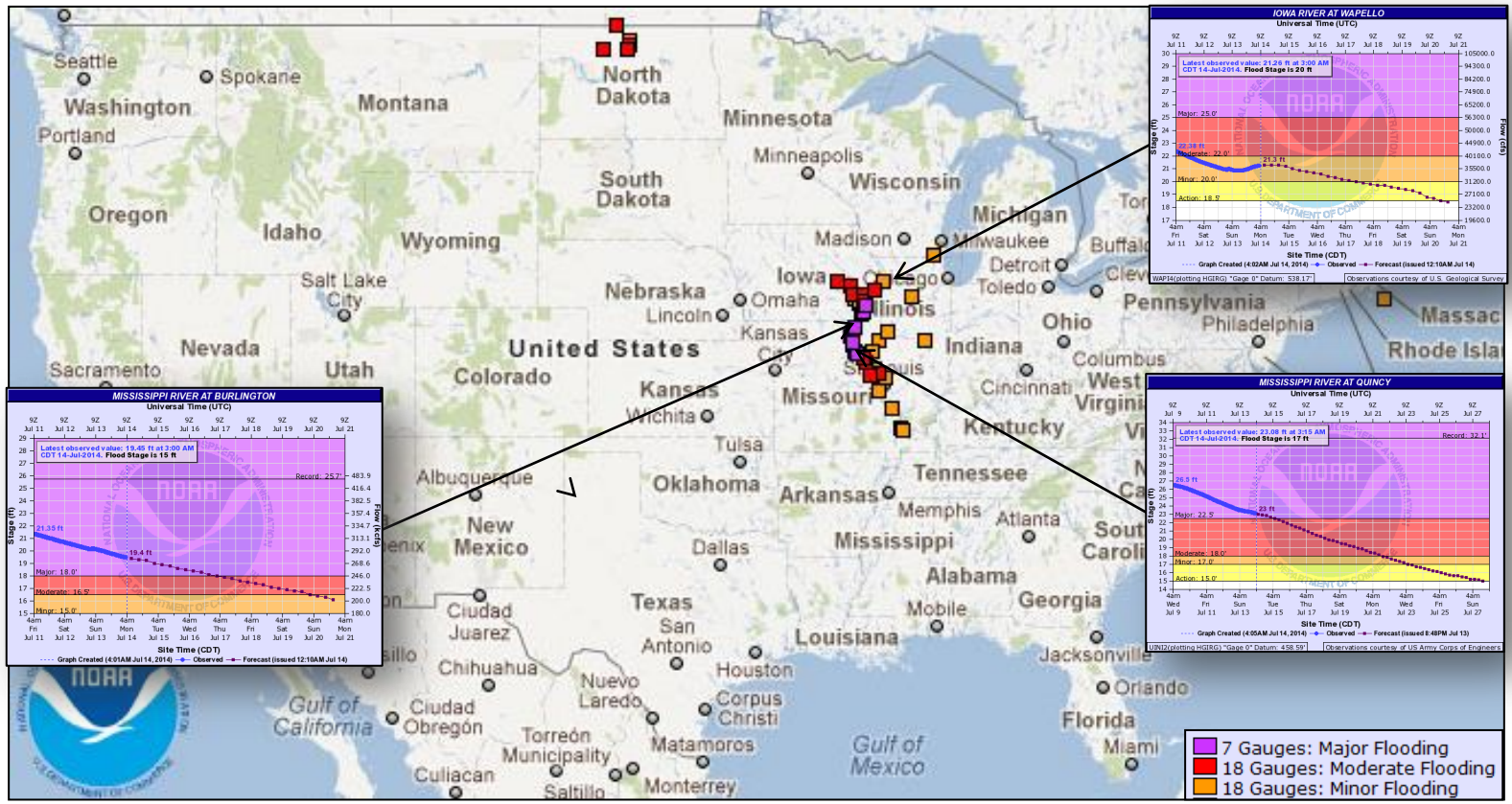


Day 2

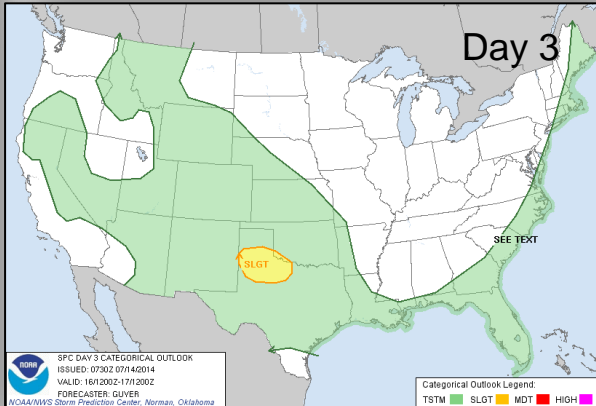
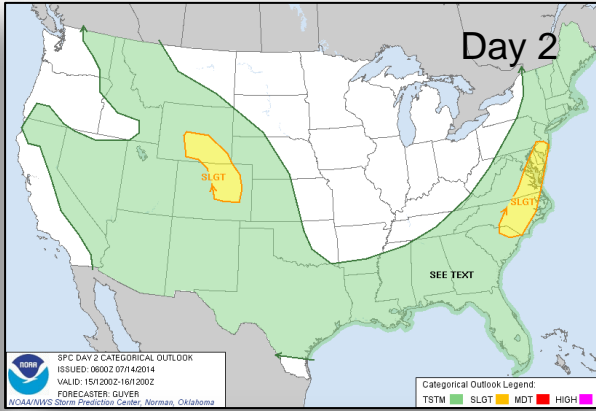
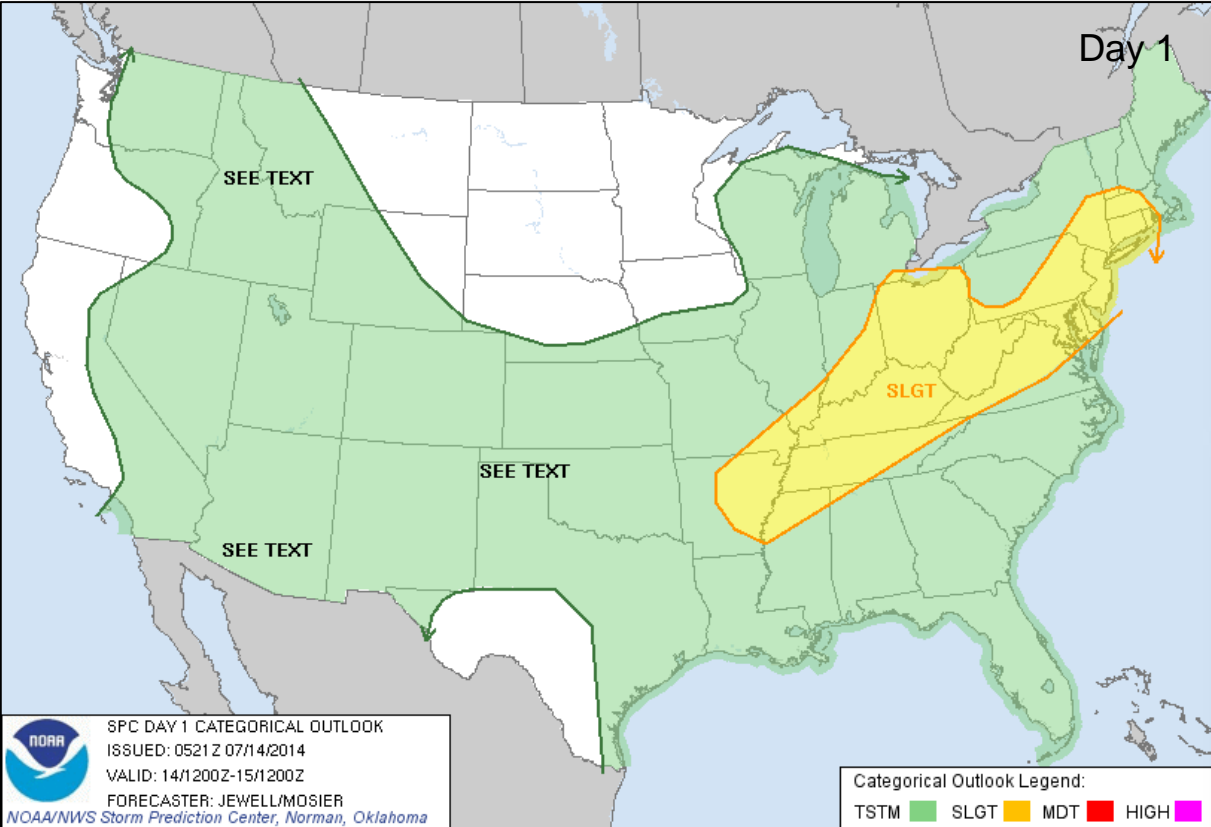


Day 3

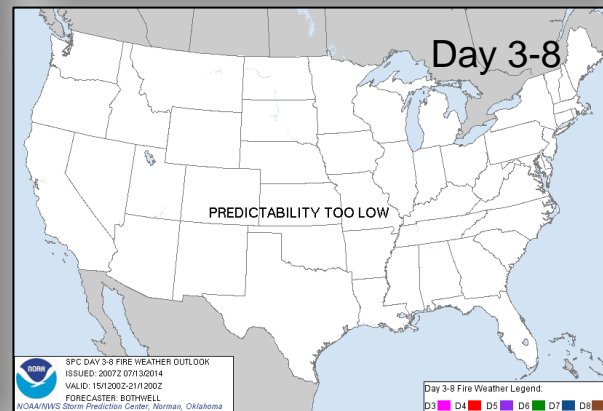
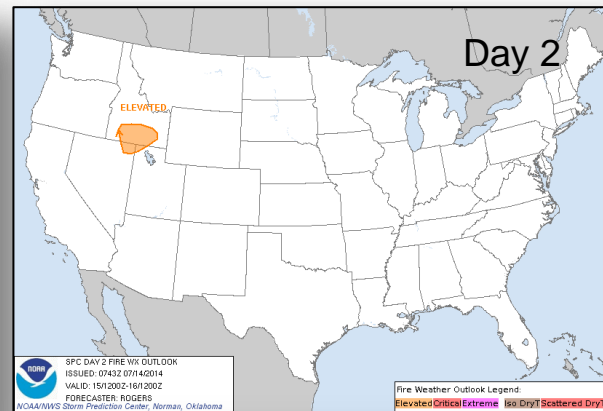
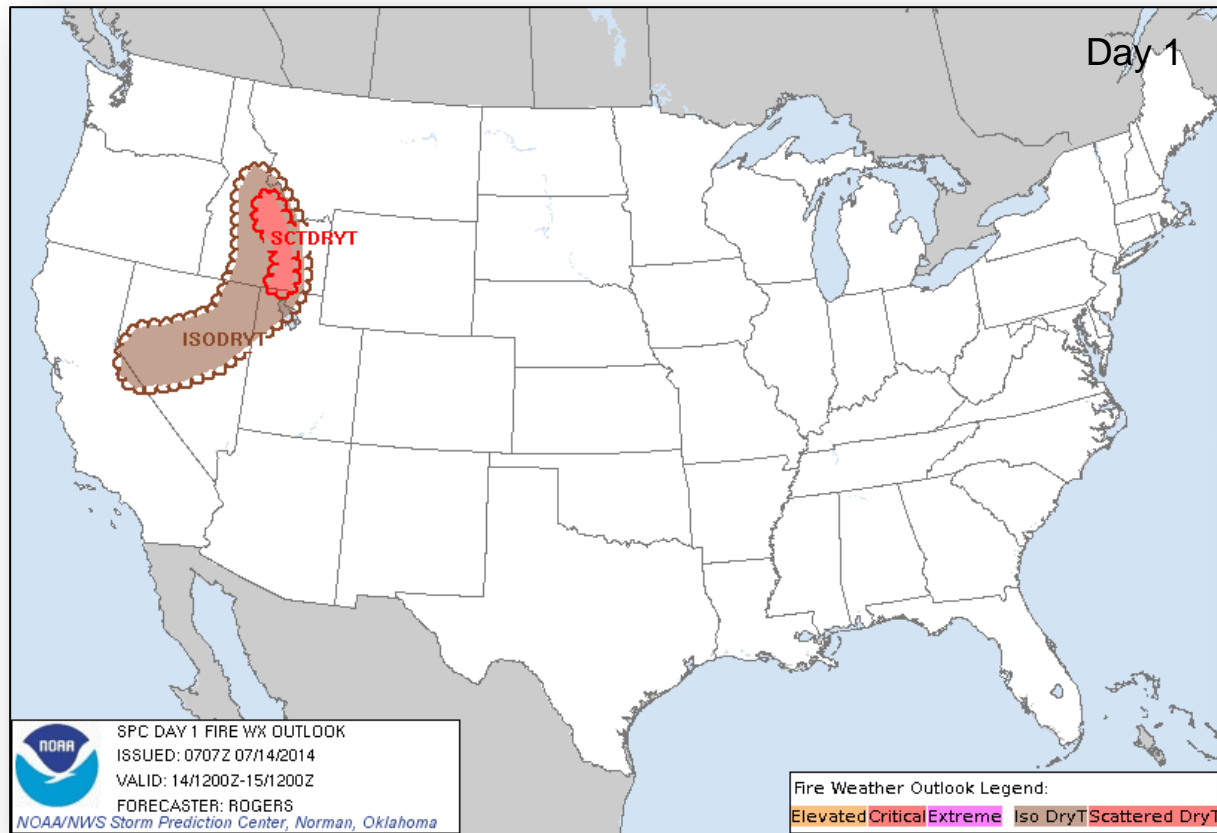
# River Forecast



# Convective Outlook, Days 1 – 3



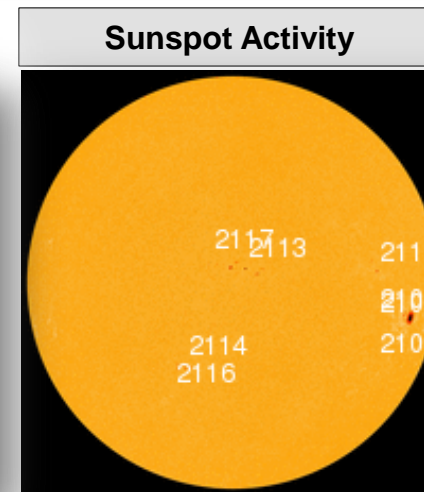
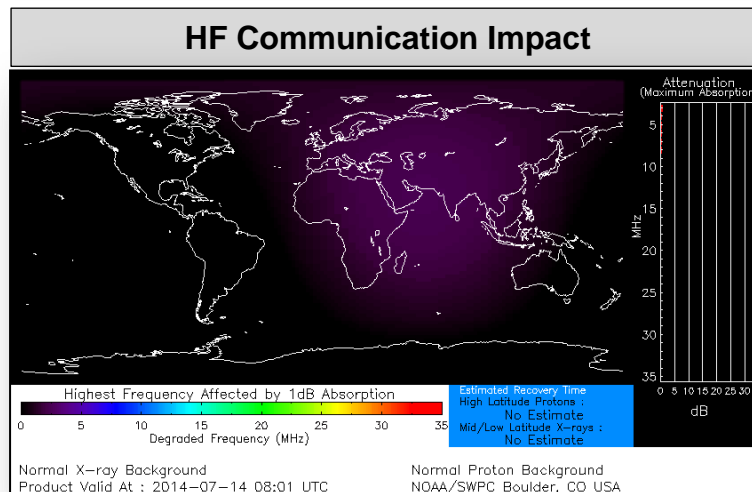
# Critical Fire Weather Areas, Days 1 – 8





# Space Weather

NOAA Scales Activity (Range: 1/minor to 5/extreme)	Past 24 Hours	Current	Next 24 Hours
Space Weather Activity:	None	None	Minor
• Geomagnetic Storms	None	None	None
• Solar Radiation Storms	None	None	None
• Radio Blackouts	None	None	R1



# FEMA Readiness – Deployable Teams/Assets



Deployable Teams/Assets									
Resource	Status	Total	Available		Partially Available	Not Available	Detailed Deployed Activated	Comments	Rating Criterion
FCO		40	13	33%	0	1	26		OFDC Readiness: FCO    Green    Yellow    Red Type 1    3+            2            1 Type 2    4+            3            2 Type 3    4                3            2
FDRC		10	4	40%	0	0	6		FDRC    3                2            1
US&R		28	27	96%	0	1	0	• NM-TF1 (Red for personnel shortages)	• Green = Available/FMC • Yellow = Available/PMC • Red    = Out-of-Service • Blue   = Assigned/Deployed
National IMAT		3	2	67%	0	0	1	• National-IMAT West deployed to DC (NRCC)	• Green: 3 avail • Yellow: 1-2 avail • Red: 0 avail ( <i>Individual N-IMAT red if 50% of Section Chiefs and/or Team Leader is unavailable for deployment.</i> )
Regional IMAT		13	5	38%	4	2	2	<u>Partially Mission Capable (PMC):</u> • Region II, III, VI (1) & VI (2 ) <u>Not Mission Capable (NMC):</u> • Region VII & IX for Personnel shortages <u>Deployed</u> • Region X to WA; Region V to MN	• Green: 7 or more avail • Yellow: 4 - 6 teams available • Red: > 8 teams deployed/unavailable  <i>R-IMAT also red if TL Ops/Log Chief is unavailable and has no qualified replacement.</i>
MCOV		55	47	85%	0	6	2	• Two MCOVs deployed to Edinburg, TX	• Green = 80 – 100% avail • Yellow = 60 – 79% avail • Red = 59% or below avail • Readiness remains 95%

# FEMA Readiness – National/Regional Teams



National/Regional Teams									
Resource	Status	Total	Available		Partially Available	Not Available	Deployed/ Activated	Comments	Rating Criterion
NWC		5	5	100%	0	0	24/7	Enhanced Watch (dayshift)	• Green = FMC • Yellow = PMC • Red = NMC
NRCC		2	344	89%	0	44	Not Activated		
HLT		1	N/A	N/A	0	1	Activated	Activated	
DEST							Not Activated		
RRCCs		10	10	100%	0	0	0		
RWCs/MOCs		10	10	100%	0	0	24/7		



# FEMA

**FEMA's mission is to support our citizens and first responders to ensure that as a nation we work together to build, sustain, and improve our capability to prepare for, protect against, respond to, recover from, and mitigate all hazards.**