



# **FEMA**

## **Daily Operations Briefing**

**Wednesday, July 16, 2014**

**8:30 a.m. EDT**



# Significant Activity: July 15 – 16



**Significant Events:** Wildfire activity – WA, CA & OR

**Tropical Activity:**

- Atlantic – No tropical cyclone activity expected next 48 hours
- Eastern Pacific – Disturbance 1: 20%
- Central Pacific – Disturbance 1: 20%
- Western Pacific – No tropical cyclone activity impacting U.S. territories or interests

**Significant Weather:**

- Severe weather & flash flooding –Central/Southern Rockies to Central/Southern Plains
- Flash flooding – New England
- Space Weather – past 24 hours: none; next 24 hours: none
- Elevated Fire Weather Areas: WA & OR
- Red Flag Warnings: WA, OR & UT

**FEMA Readiness:** No significant changes

**Declaration Activity:**

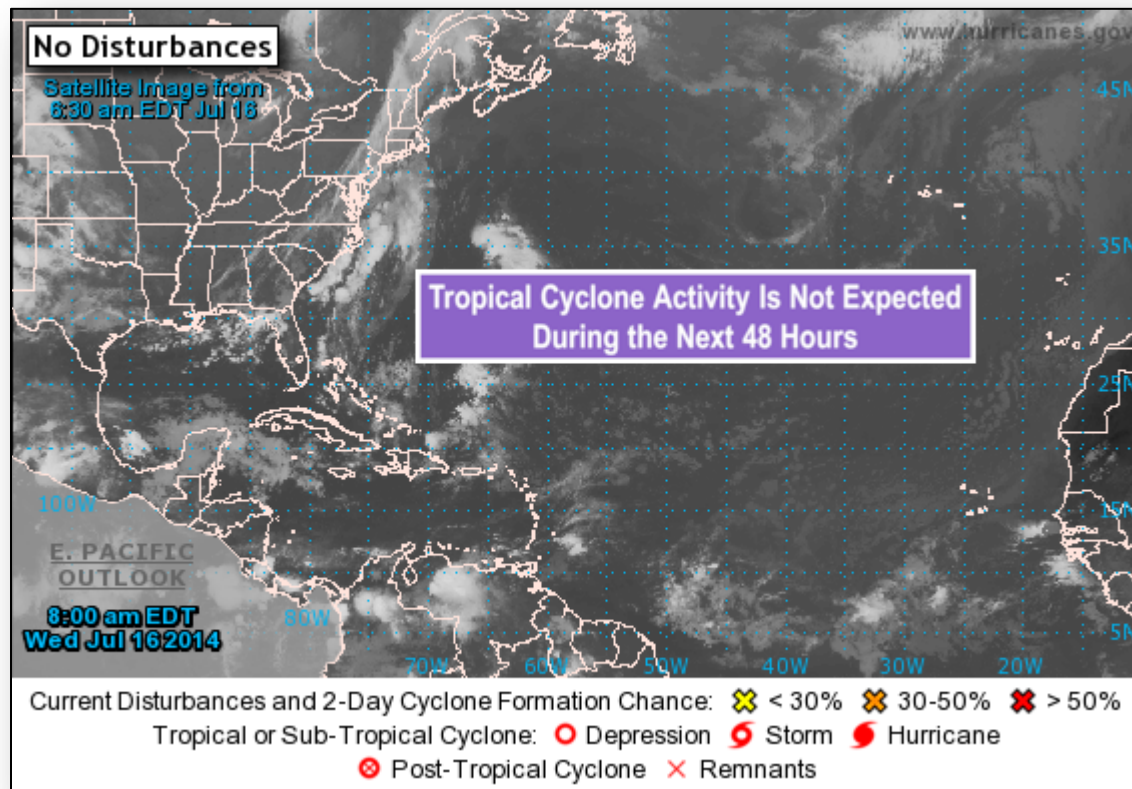
- Major Disaster Declaration Request – Nebraska
- Major Disaster Declaration Request - Iowa



# Tropical Outlook – Atlantic



FEMA

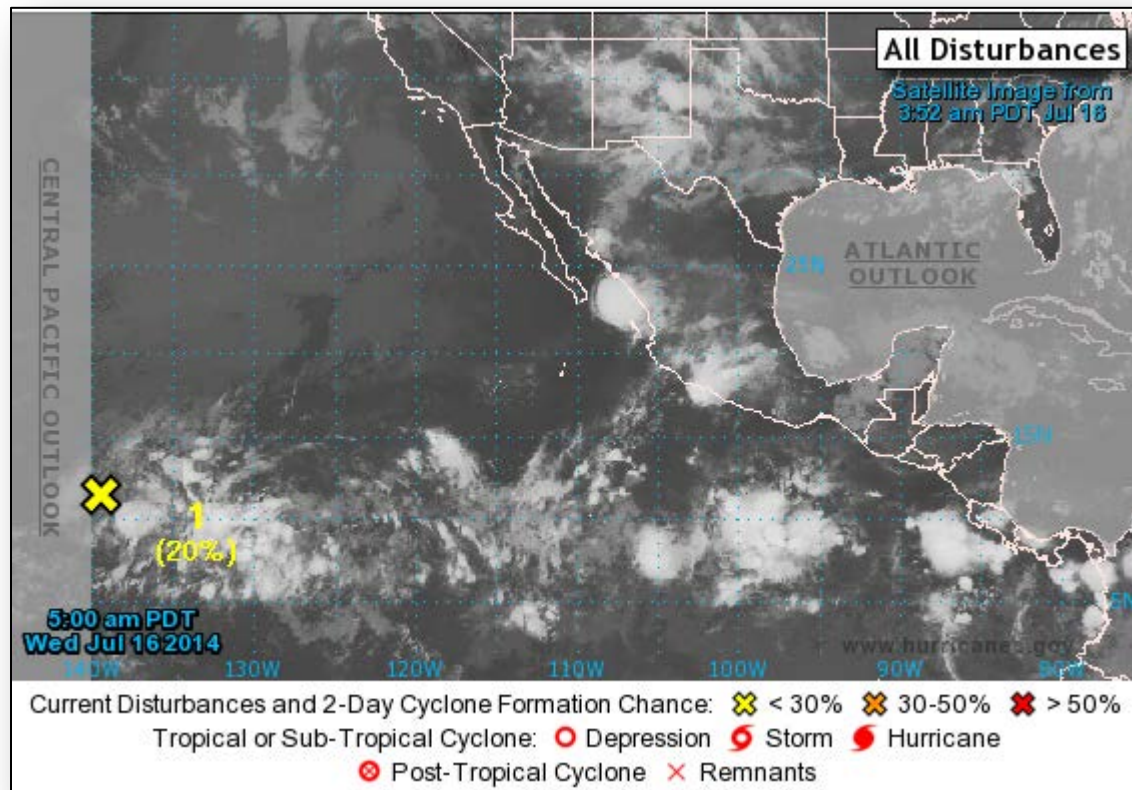




# Tropical Outlook – Eastern Pacific



FEMA

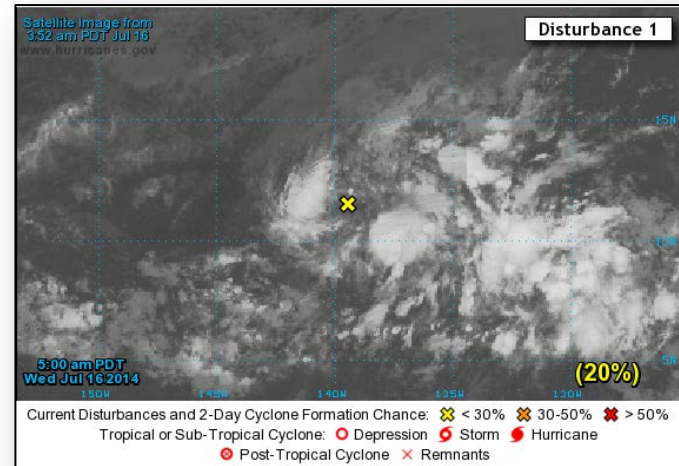




# Eastern Pacific – Disturbance 1

## As of 8:00 a.m. EDT

- Located 1,175 miles ESE of Big Island of Hawaii
- Moving W into central Pacific basin later today
- Conditions still conducive for some development today or Thursday
- After that time, upper-level winds expected to become unfavorable for development
- Chance of development:
  - Next 48 hours: Low (20%)
  - Next 5 days: Low (20%)

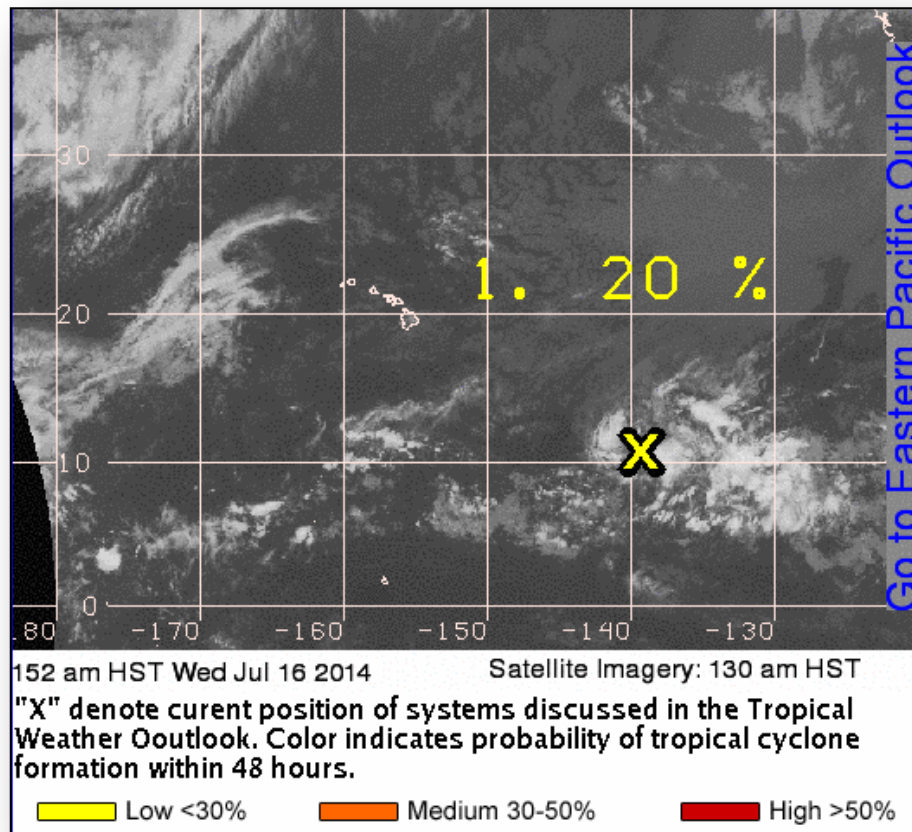




# Tropical Outlook – Central Pacific



FEMA





# Wildfire Summary



Fire Name (County)	FMAG #	Acres burned	% Contained Est. Containment date	Evacuations (Residents)	Structures Threatened	Structures Destroyed	Fatalities / Injuries
Washington (1)							
Mills Canyon - FINAL (Chelan County)	FEMA-5059-FM July 10, 2014	22,571	40% (+6)	Lifted	419 (-102)	3	0 / 0
California (1)							
Bully Incident (Shasta County)	Not Requested	8,100 (+2,600)	20% (+5)	Mandatory	68	18 (8 homes)	0 / 10 (+4)
Oregon (1)							
Moccasin Hill Fire - FINAL (Klamath County)	FEMA-5060-FM July 14, 2014	2,535 (-365)	35% (+35)	Lifted	0 (-231)	33 (+13) (17 homes)	0 / 1



# Disaster Requests & Declarations



**FEMA**

Declaration Requests in Process		Requests APPROVED (since last report)	Requests DENIED (since last report)
4	Date Requested	0	0
NH – DR (Appeal) Severe Storms and Flooding	July 3, 2014		
MN – DR Severe Storms, Straight-line Winds, Flooding, Landslides, and Mudslides	July 9, 2014		
IA – DR Severe Storms, Tornadoes, Straight-Line Winds, and Flooding	July 14, 2014		
NE – DR Severe Storms, Straight-Line Winds, Tornadoes, and Flooding	July 14, 2014		

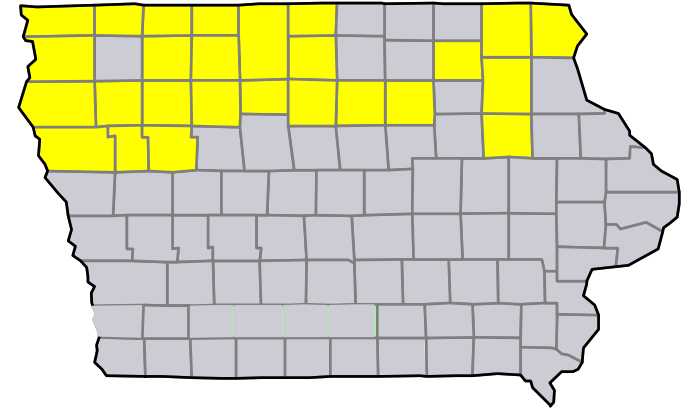


# Major Disaster Declaration Request – IA



## July 14, 2014

- Request for Major Disaster Declaration for State of Iowa
- For severe storms, straight-line winds, tornadoes and flooding that occurred June 14-23, 2014
- Requesting:
  - Public Assistance for 26 counties
  - Hazard Mitigation statewide



 Requested PA counties

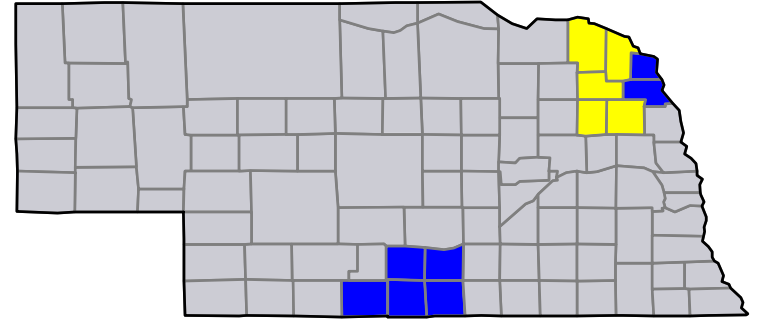


# Major Disaster Declaration Request – NE



## July 14, 2014

- Request for Major Disaster Declaration for State of Nebraska
- For severe storms, straight-line winds, tornadoes and flooding that occurred June 14-21, 2014
- Requesting:
  - Individual Assistance for 5 counties
  - Public Assistance for 12 counties
  - Hazard Mitigation statewide



 Requested IA & PA counties

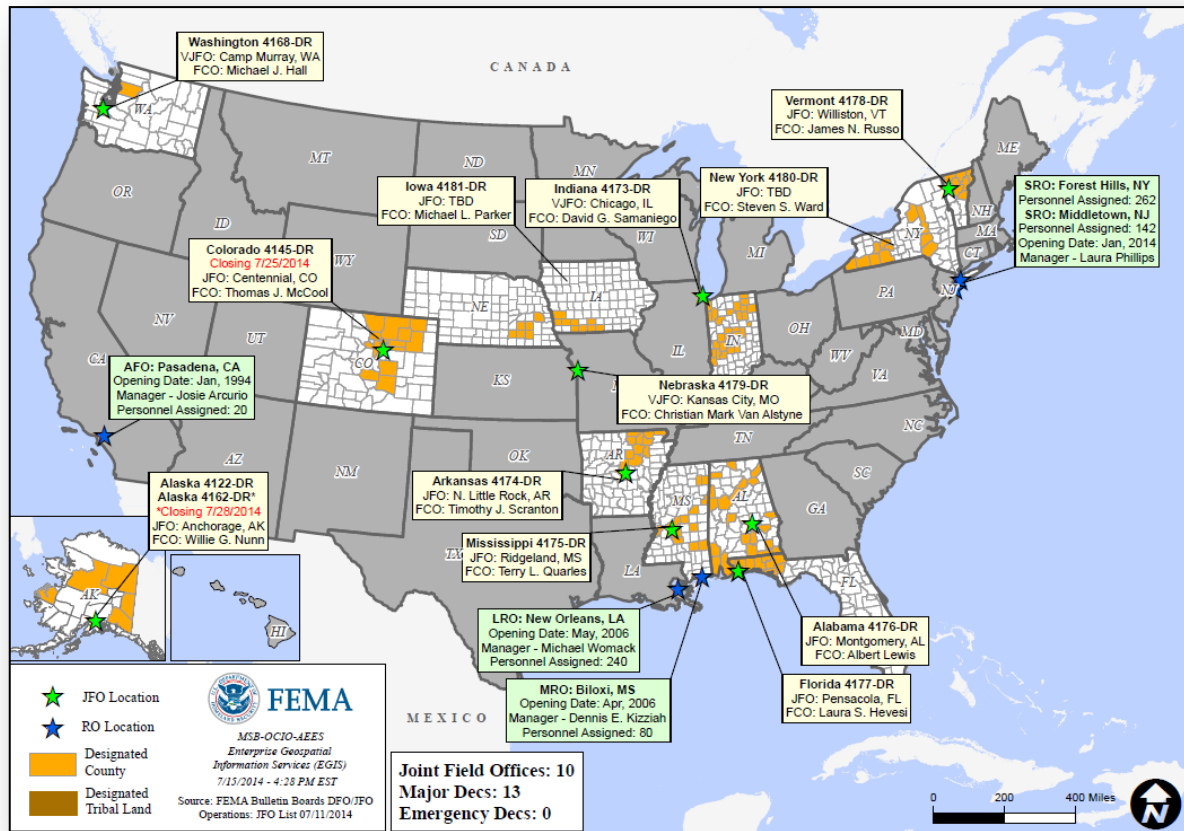
 Requested PA only counties



# Open Field Offices as of July 16, 2014



FEMA





# Joint Preliminary Damage Assessments



**FEMA**

Region	State / Location	Event	IA/PA	Number of Counties		Start – End
				Requested	Complete	
IV	TN	Severe Weather & Flooding June 5-10	PA	35	12	7/15 - TBD
V	MN & RLR*	Severe Storms & Flooding June 11	PA	49 counties & 1 tribe	8	7/1 – TBD
VII	IA	Severe Storms & Flooding June 26 & continuing	PA	24	0	7/14 - TBD
VIII	SD	Flooding & Tornado damage June 13 & continuing	PA	12	2	7/14 – TBD
VIII	ND	Severe Storms & Flooding June 13 & continuing	PA	8	0	7/21– TBD
VIII	SRST** (SD)	Flooding & Tornado Damage June 13 & continuing	PA	1 Tribe	0	7/14 – TBD
VIII	SRST** (ND)	Flooding & Tornado Damage June 13 & continuing	PA	1 Tribe	0	7/14 – TBD

\*RLR – Red Lake Reservation

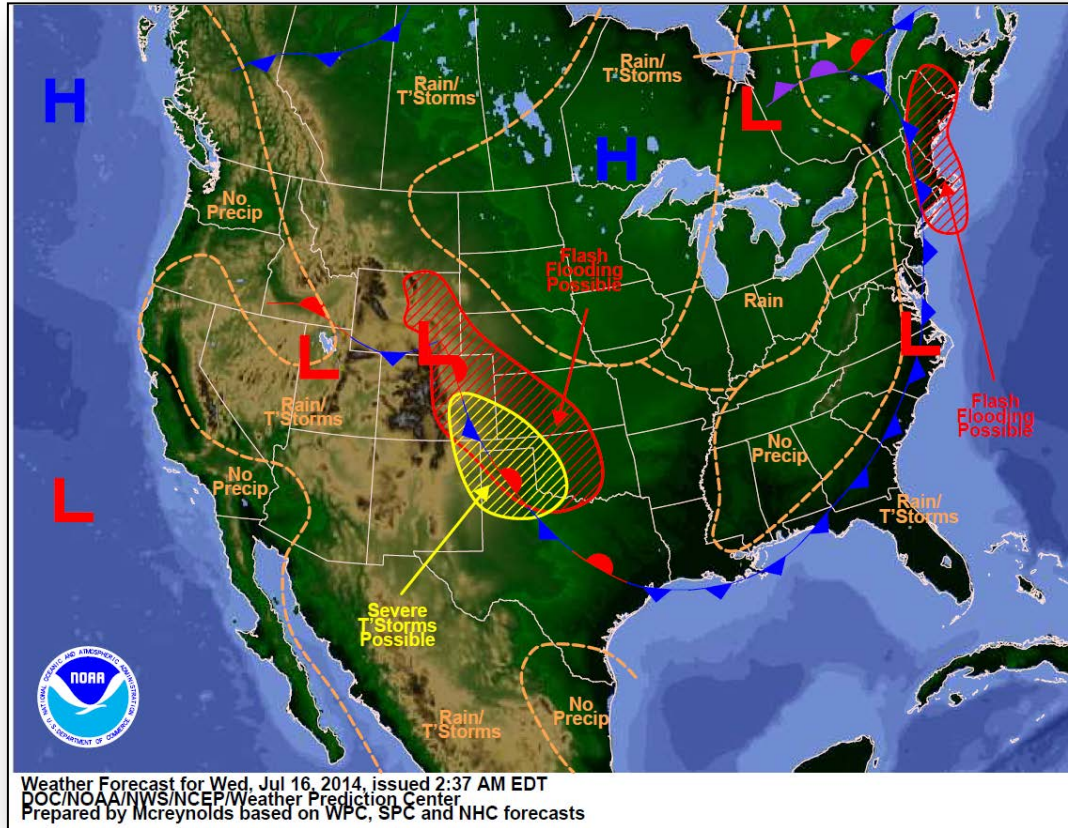
\*\*SRST – Standing Rock Sioux Tribe



# National Weather Forecast

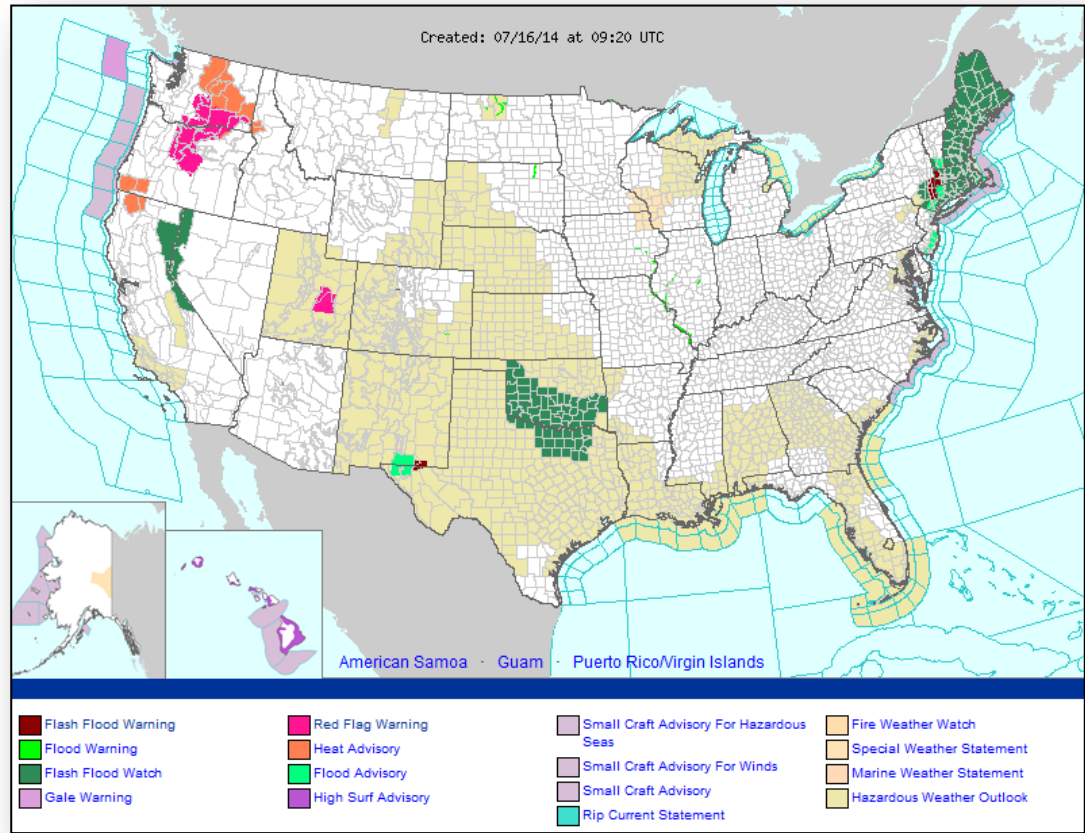


FEMA





# Active Watches/Warnings

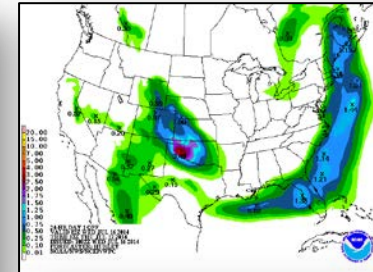
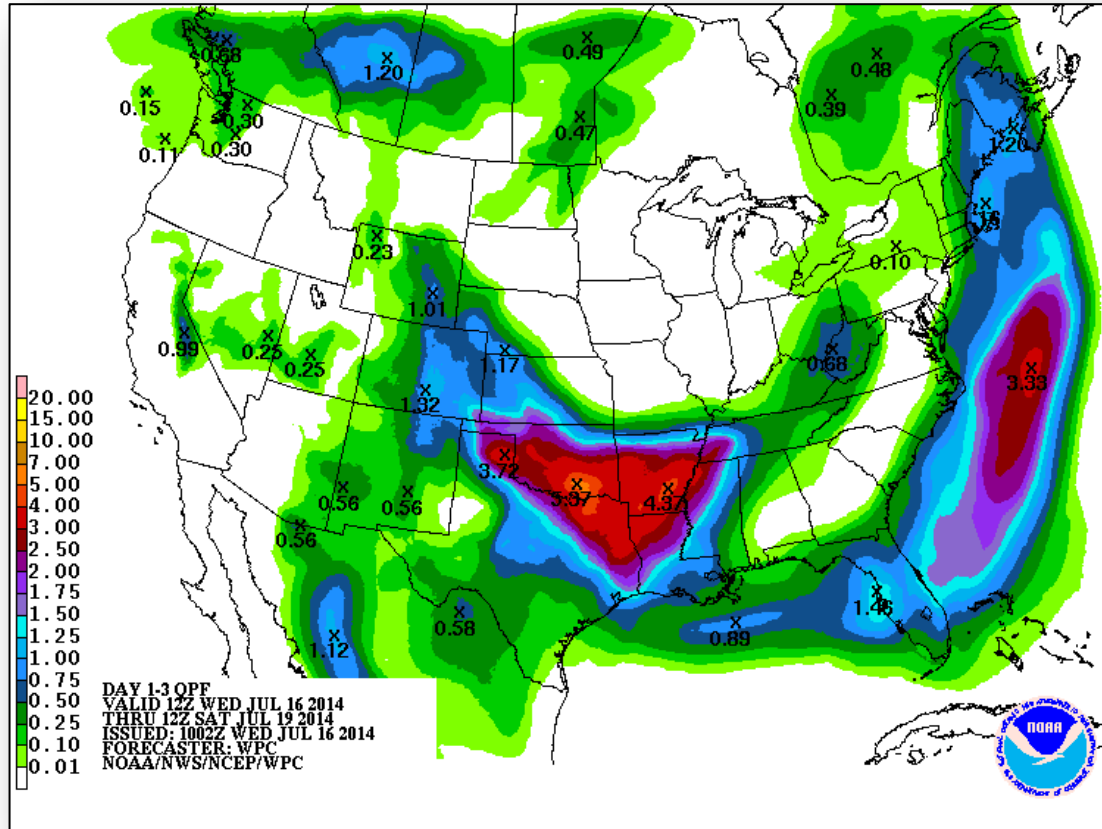




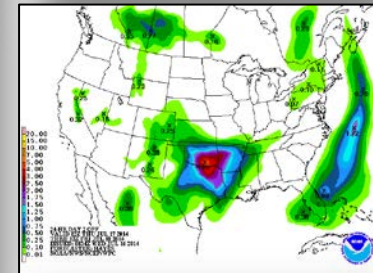
# Precipitation Forecast – 3 Day



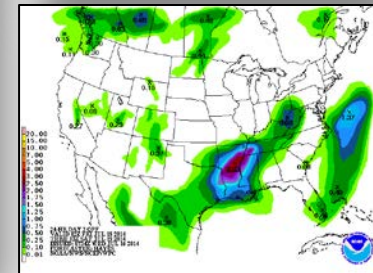
FEMA



Day 1



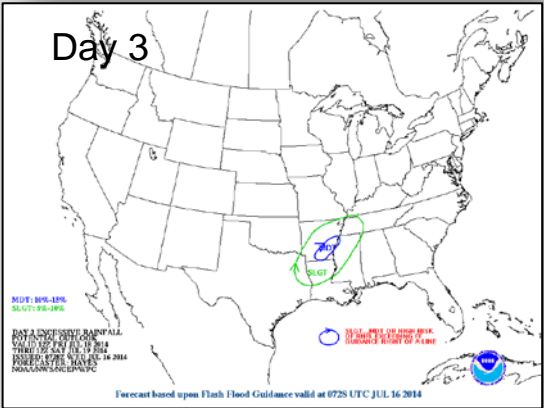
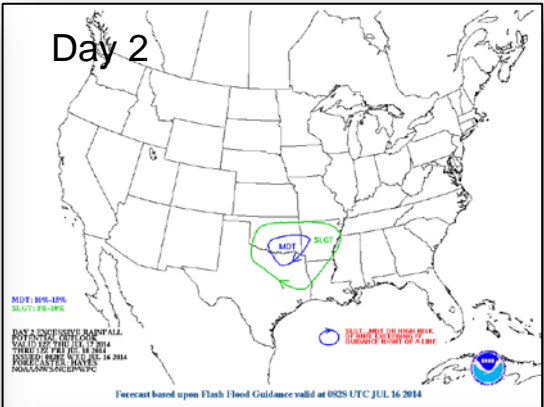
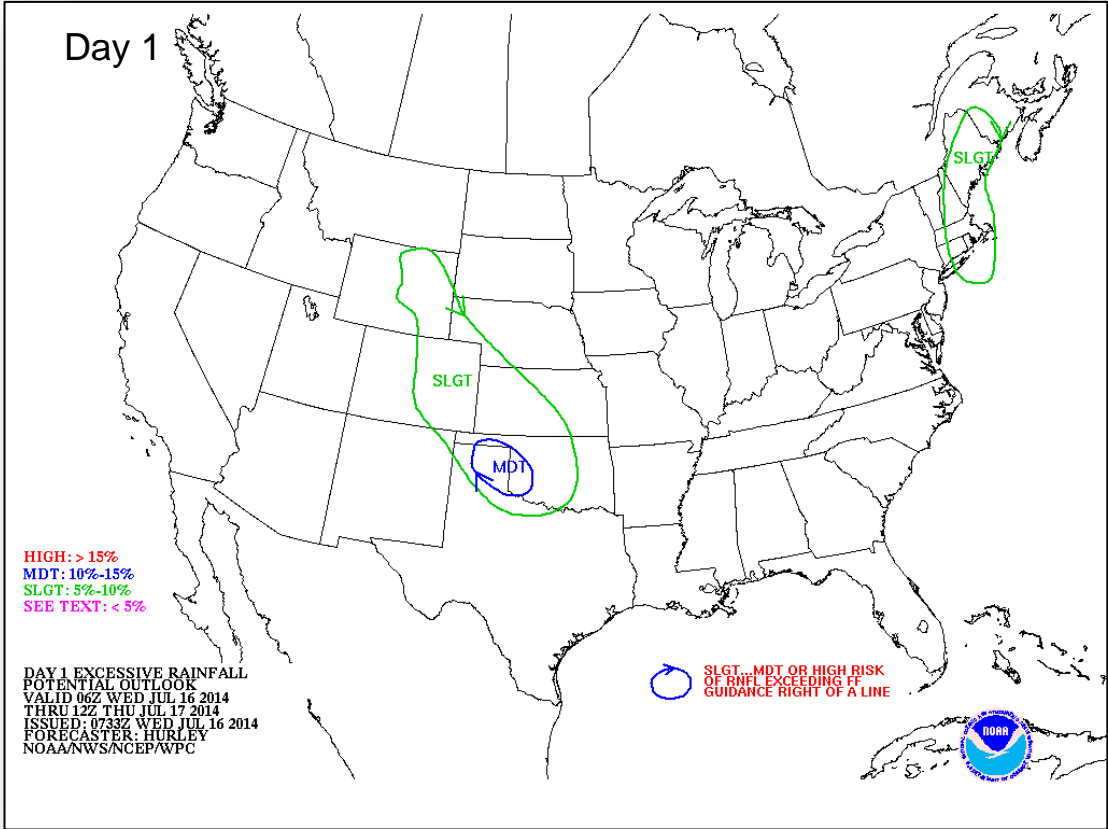
Day 2



Day 3

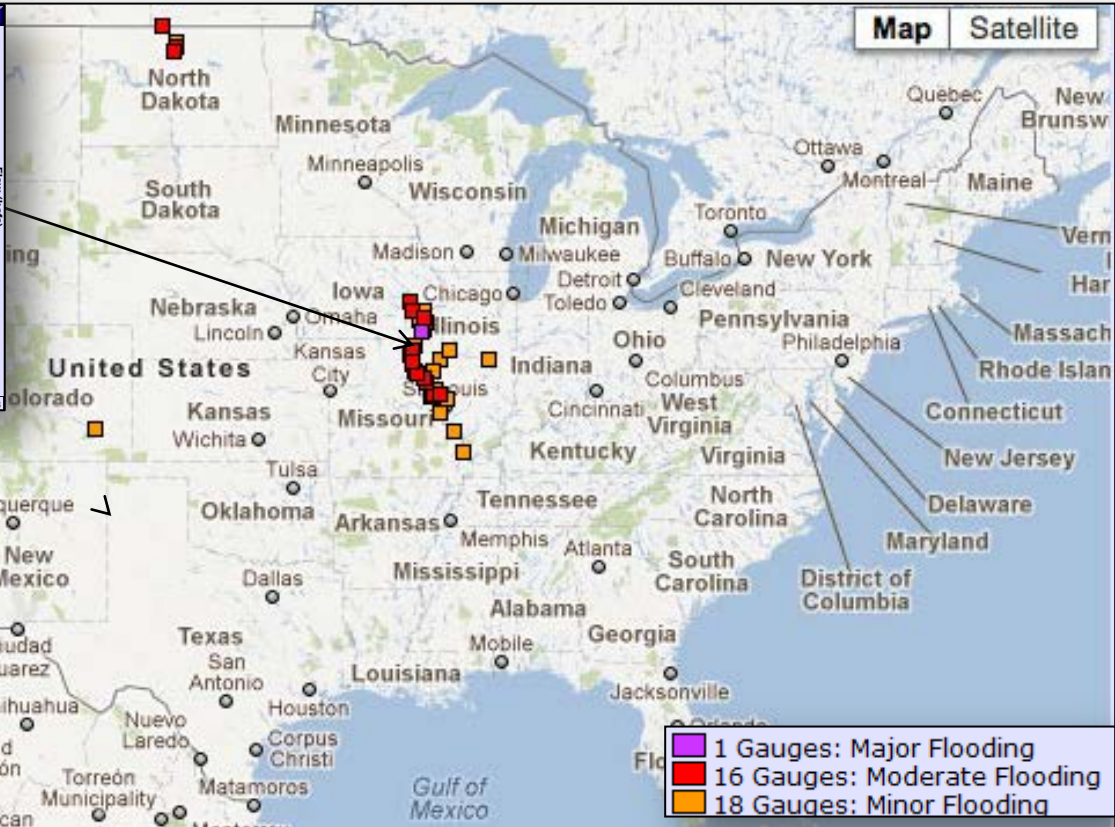
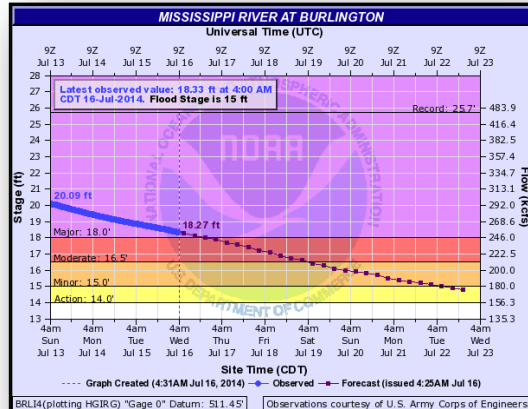


# Flash Flood Outlook, Days 1-3



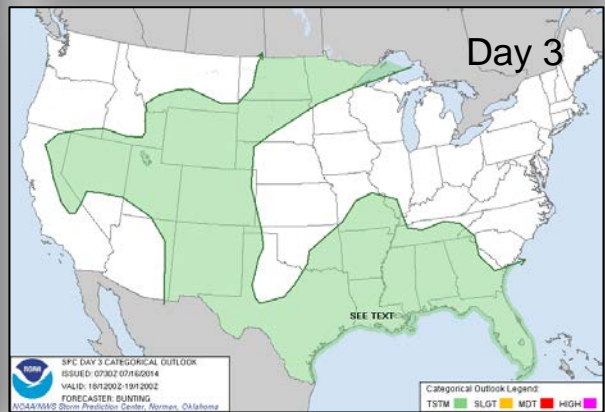
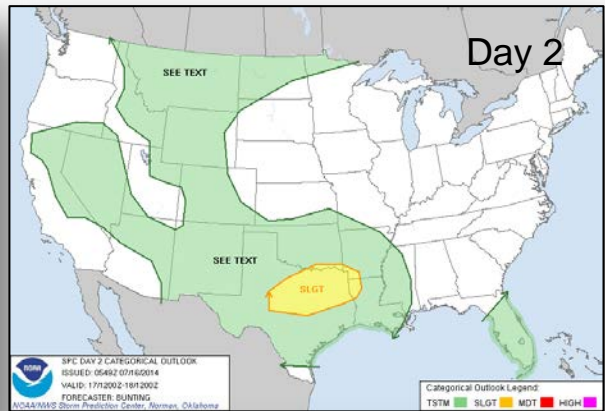
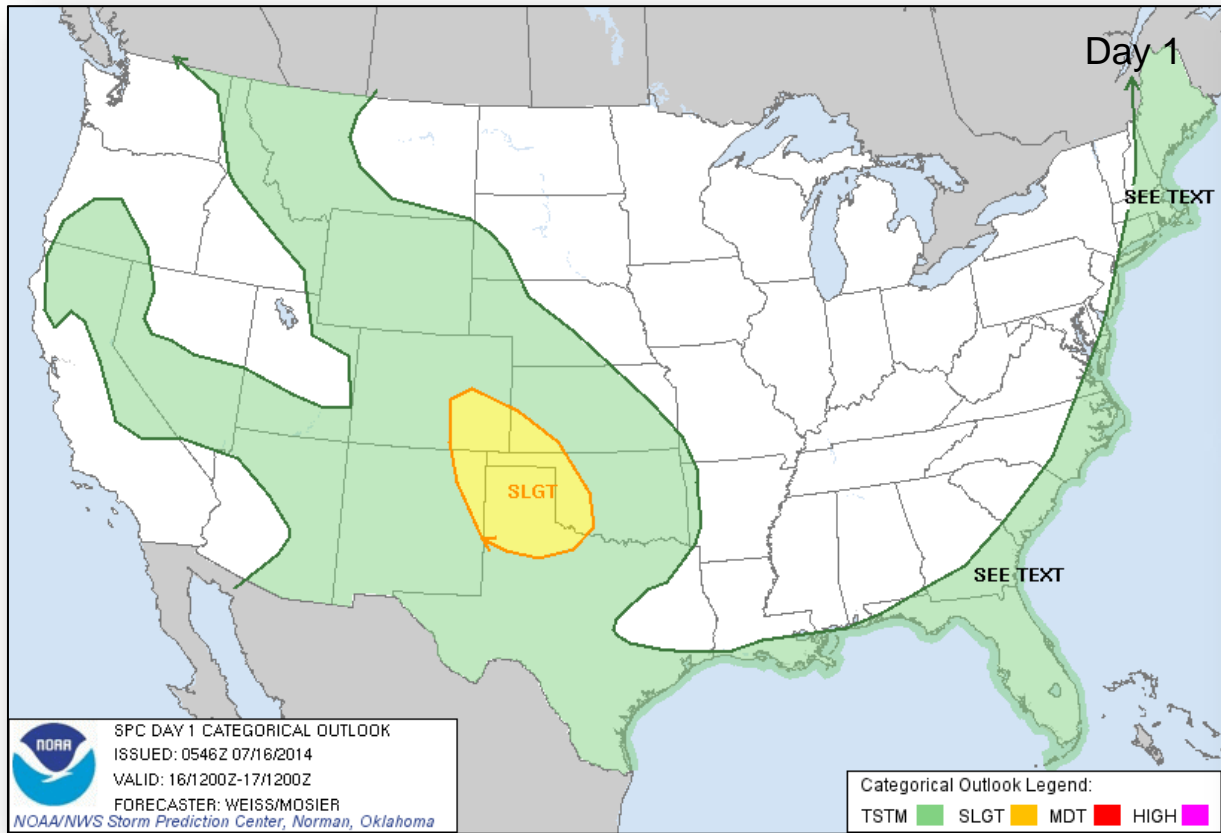


# River Forecast





# Convective Outlook, Days 1 – 3

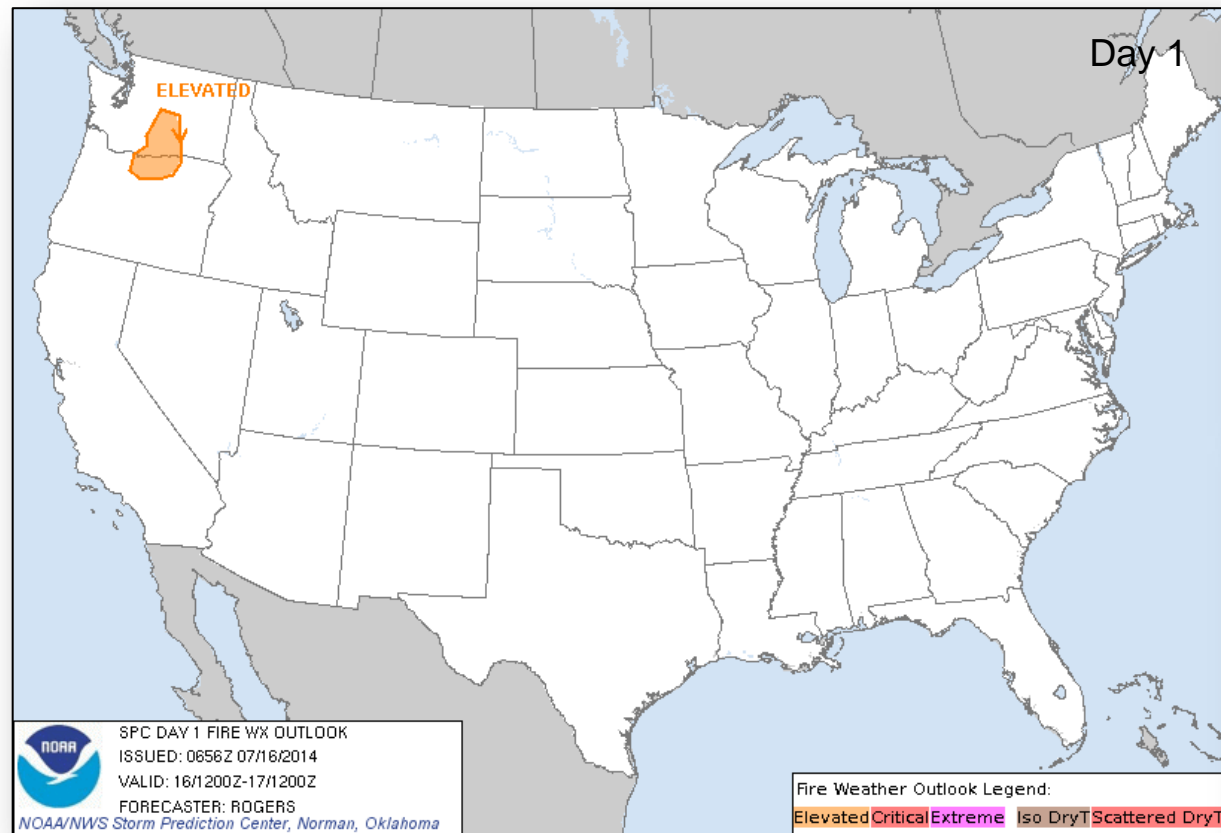




# Critical Fire Weather Areas, Days 1 – 8



FEMA

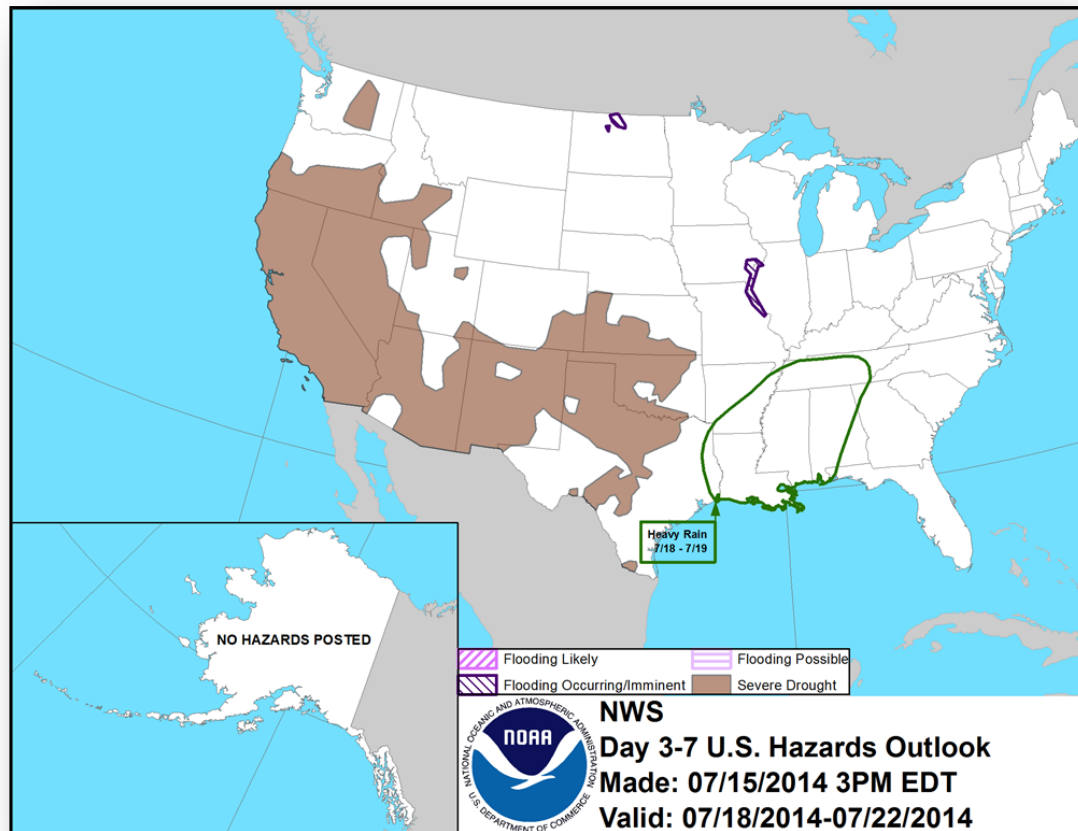




# Hazard Outlook: July 18 – 22



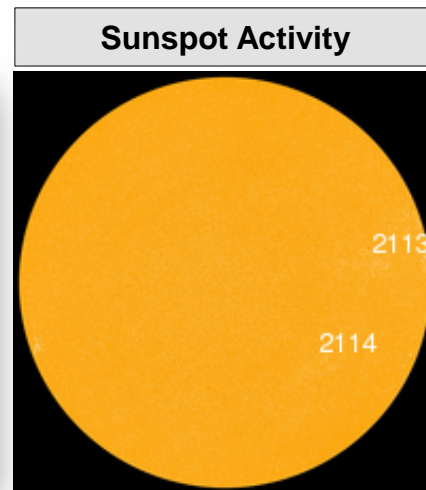
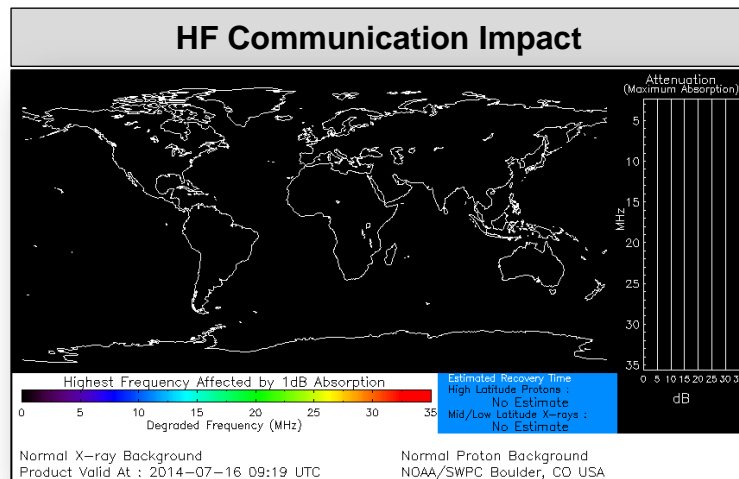
FEMA





# Space Weather

NOAA Scales Activity (Range: 1/minor to 5/extreme)	Past 24 Hours	Current	Next 24 Hours
Space Weather Activity:	None	None	None
• Geomagnetic Storms	None	None	None
• Solar Radiation Storms	None	None	None
• Radio Blackouts	None	None	None





# FEMA Readiness – Deployable Teams/Assets



Deployable Teams/Assets									
Resource	Status	Total	Available		Partially Available	Not Available	Detailed Deployed Activated	Comments	Rating Criterion
FCO		40	11	28%	0	1	28		OFDC Readiness: FCO    Green    Yellow    Red Type 1    3+        2        1 Type 2    4+        3        2 Type 3    4         3        2 FDRC    3        2        1
FDRC		10	4	40%	0	0	6		
US&R		28	27	96%	0	1	0	• NM-TF1 (Red for personnel shortages)	• Green = Available/FMC • Yellow = Available/PMC • Red = Out-of-Service • Blue = Assigned/Deployed
National IMAT		3	2	67%	0	0	1	• National-IMAT West deployed to DC (NRCC)	• Green: 3 avail • Yellow: 1-2 avail • Red: 0 avail ( <i>Individual N-IMAT red if 50% of Section Chiefs and/or Team Leader is unavailable for deployment.</i> )
Regional IMAT		13	5	38%	3	4	1	<u>Partially Mission Capable (PMC):</u> • Region II, III & VI (Team 1) <u>Not Mission Capable (NMC):</u> • Region V, VI (Team 2), VII & IX (Personnel shortages) <u>Deployed</u> • Region X to WA	• Green: 7 or more avail • Yellow: 4 - 6 teams available • Red: > 8 teams deployed/unavailable  <i>R-IMAT also red if TL Ops/Log Chief is unavailable and has no qualified replacement.</i>
MCOV		55	50	91%	0	4	1	• One MCOV deployed to Edinburg, TX	• Green = 80 – 100% avail • Yellow = 60 – 79% avail • Red = 59% or below avail • Readiness remains 95%



# FEMA Readiness – National/Regional Teams



National/Regional Teams									
Resource	Status	Total	Available		Partially Available	Not Available	Deployed/ Activated	Comments	Rating Criterion
NWC		5	5	100%	0	0	24/7	Enhanced Watch (dayshift)	<ul style="list-style-type: none"> <li>• Green = FMC</li> <li>• Yellow = PMC</li> <li>• Red = NMC</li> </ul>
NRCC		2	344	89%	0	44	Not Activated		
HLT		1	N/A	N/A	0	1	Activated	Activated	
DEST							Not Activated		
RRCCs		10	10	100%	0	0	0		
RWCs/MOCs		10	10	100%	0	0	24/7		





# FEMA

**FEMA's mission is to support our citizens and first responders to ensure that as a nation we work together to build, sustain, and improve our capability to prepare for, protect against, respond to, recover from, and mitigate all hazards.**