



FEMA

Daily Operations Briefing

Saturday, July 26, 2014

8:30 a.m. EDT

Significant Activity: July 25 – 26



Significant Events: Wildfire activity – Pacific Northwest

Tropical Activity:

- Atlantic – Disturbance 1 (LOW; 0%)
- Eastern Pacific – Tropical Storm Genevieve; Tropical Depression EIGHT-E; Disturbance 1 (MED; 60%);
- Central Pacific – Disturbance 1 (MED; 30%)

Significant Weather:

- Moderate risk of severe thunderstorms – portions of IL, IN and KY
- Slight risk of severe thunderstorms – Middle MS and Lower OH valleys
 - Primary threats of large hail, damaging winds, heavy rain and possible tornadoes
- Rain and isolated thunderstorms – Southwest and Central Rockies
- Space Weather – Past 24 hours: None; Next 24 hours: None
- Elevated Fire Weather Areas: WY & MT
- Red Flag Warnings: WY, MT & OK

FEMA Readiness: RIV RWC will activate to an Enhanced Watch on Sunday, July 27

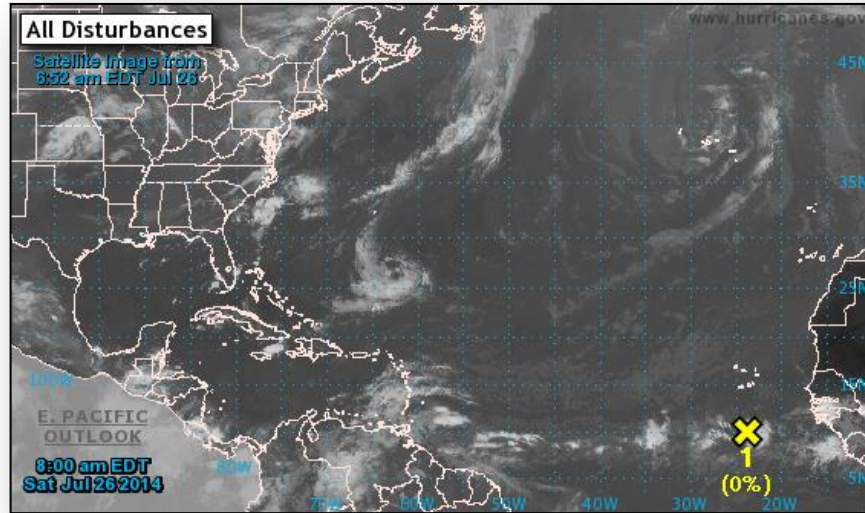
Declaration Activity: None

Wildfire Summary



Fire Name (County)	FMAG #	Acres burned	% Contained Est. Containment date	Evacuations (Residents)	Structures Threatened	Structures Destroyed	Fatalities / Injuries
Washington (1)							
Chiwaukum Complex (Chelan County)	FEMA-5061-FM July 17, 2014	13,000	25%	Mandatory	1,583	0	0 / 1

2-Day Tropical Outlook – Atlantic



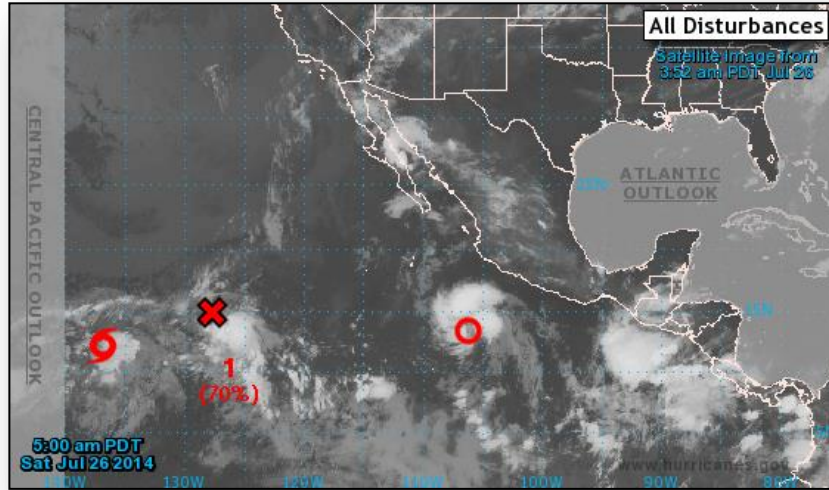
Disturbance 1 (as of 8:00 a.m. EDT)

- Located south of the Cape Verde Islands
- Moving westward
- Some slow development of this system is possible next week
- Formation chance:
 - Next 48 hours – Low (near 0%)
 - Next 5 days – Low (20%)

2-Day Tropical Outlook – Eastern Pacific



FEMA



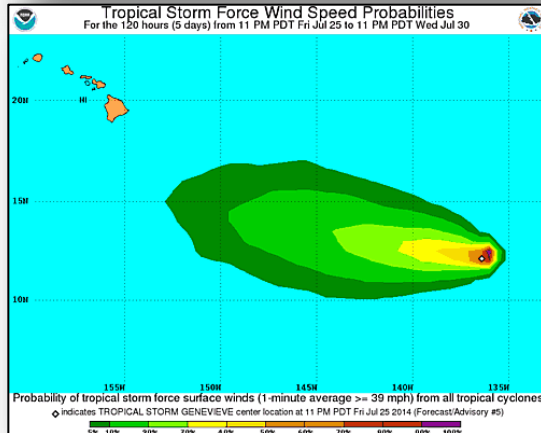
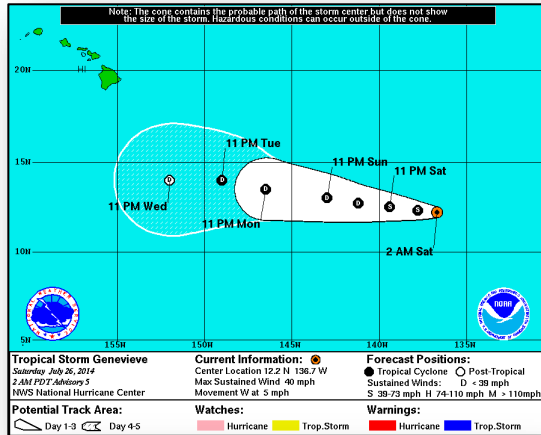
Disturbance 1 (Invest 93E) (as of 8:00 a.m. EDT)

- Located 1,250 miles WSW of southern tip of Baja California peninsula
- Moving W at 10 mph
- System may develop into a tropical depression today; however, upper-level winds are forecast to become unfavorable tonight or Sunday for additional development
- Formation chance:
 - Next 48 hours – High (70%)
 - Next 5 days – High (70%)

2-Day Tropical Outlook – Eastern Pacific



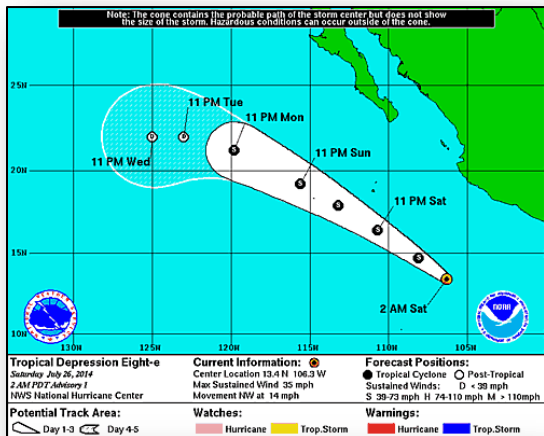
FEMA



Tropical Storm Genevieve (as of 5:00 a.m. EDT)

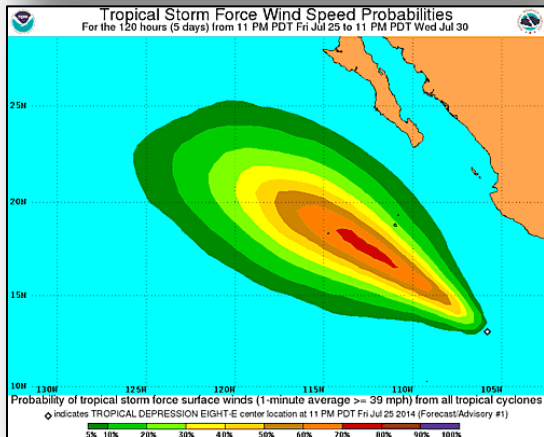
- Located 1,345 miles ESE of South Point, Hawaii
- Moving W at 5 mph
- Maximum sustained winds of 40 mph with higher gusts
- Expected to begin accelerating later today and maintain a westward motion through Sunday night
- Additional weakening forecast during the next day or two due to strong upper-level winds
- Tropical-storm-force winds extend outward up to 45 miles

2-Day Tropical Outlook – Eastern Pacific

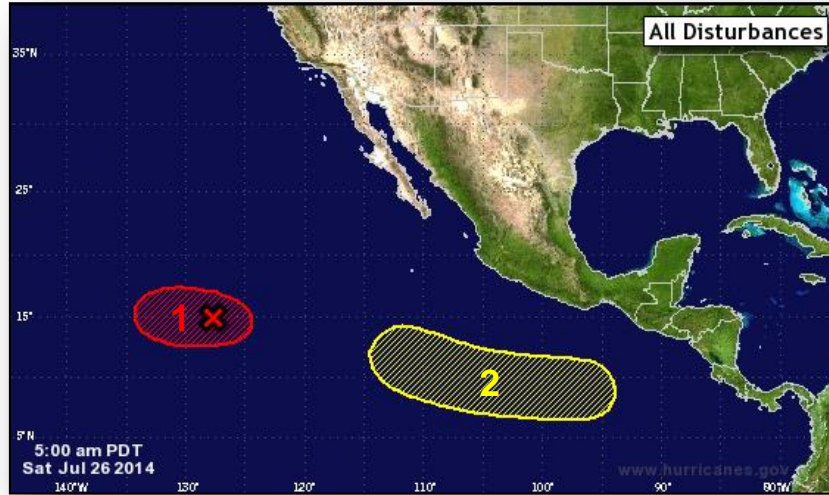


Tropical Depression EIGHT-E (as of 5:00 a.m. EDT)

- Located 410 miles SSW of Manzanillo, Mexico
- Moving NW near 14 mph
- This general motion expected to continue next few days
- Continues to show signs of organization
- Maximum sustained winds near 35 mph
- Some strengthening forecast during the next 48 hours
- Expected to strengthen into a tropical storm later this morning



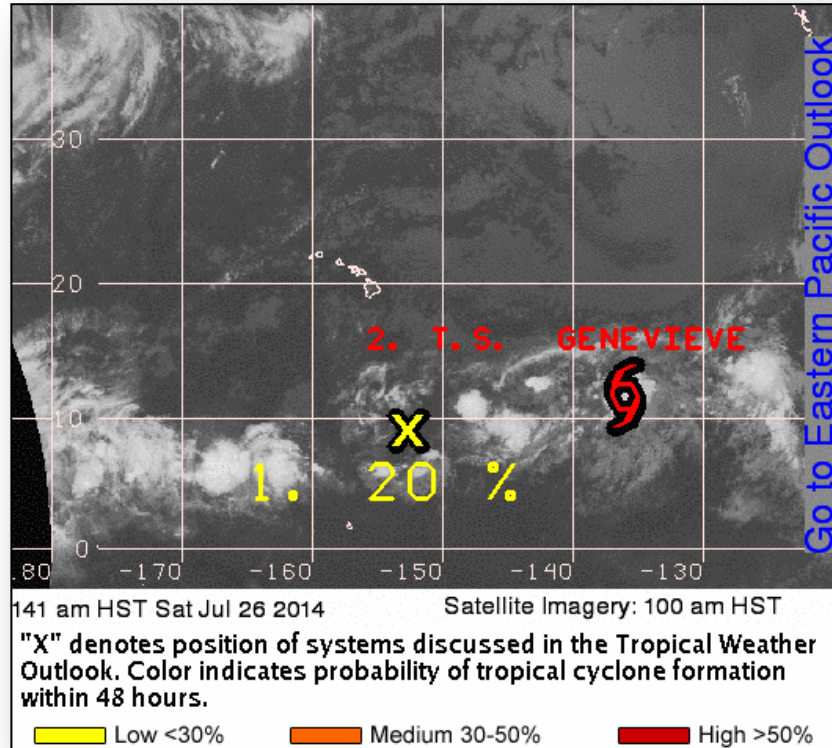
5-Day Tropical Outlook – Eastern Pacific



Disturbance 2 (as of 8:00 a.m. EDT)

- Another area of low pressure could form well south of southern Mexico late this weekend
- Some gradual development possible after that time
- Formation chance:
 - Next 48 hours – Low (near 0%)
 - Next 5 days – Low (20%)

Tropical Outlook – Central Pacific



Disturbance 1 (as of 8:00 a.m. EDT)

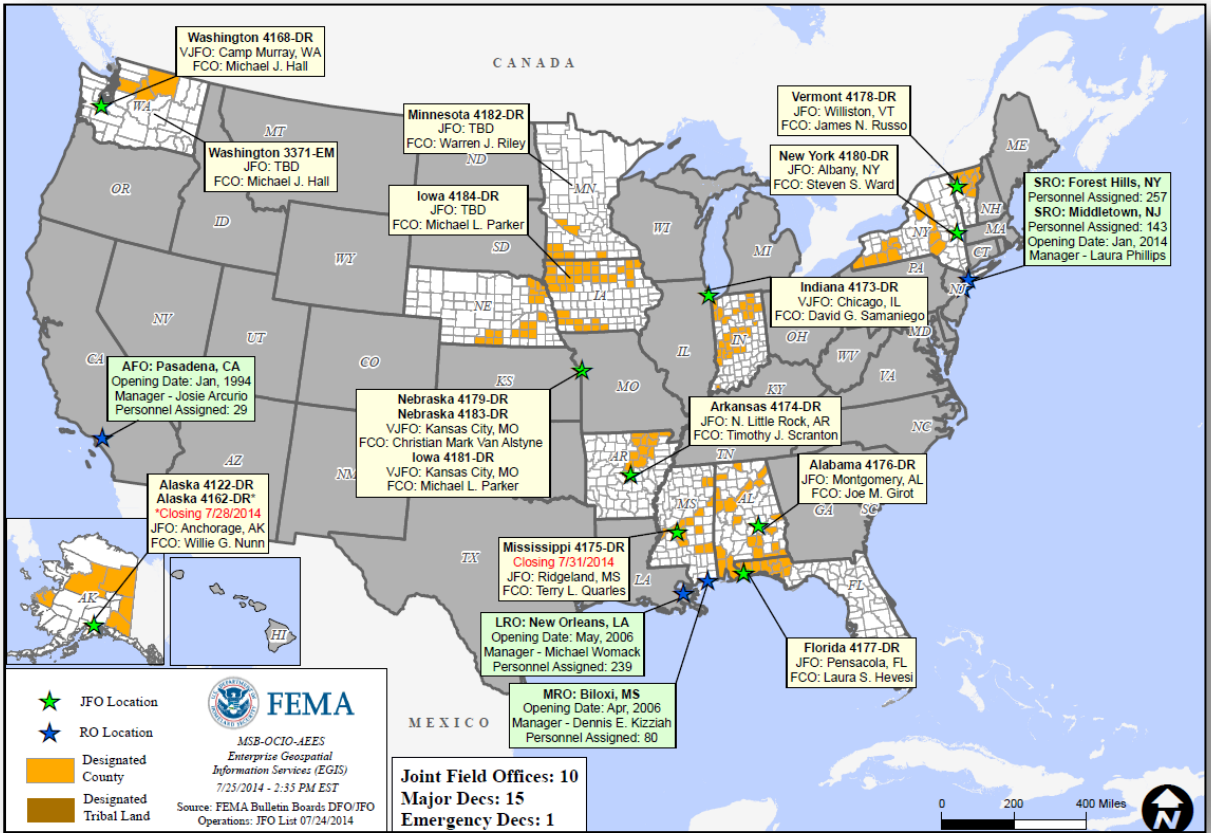
- Located 720 miles SSE of the Big Island of Hawaii
- Moving west at 10 mph
- This system may develop over next few days
- Formation chance:
 - Next 48 hours – Medium (30%)

Disaster Requests & Declarations



Declaration Requests in Process		Requests APPROVED (since last report)	Requests DENIED (since last report)
3	Date Requested	0	0
NE – DR Severe Storms, Tornadoes, and Flooding	July 15, 2014		
SD – DR Severe Storms, Tornadoes, and Flooding	July 18, 2014		
WI – DR Extreme Cold and Deep Frost	July 23, 2014		

Open Field Offices as of July 26, 2014



Joint Preliminary Damage Assessments

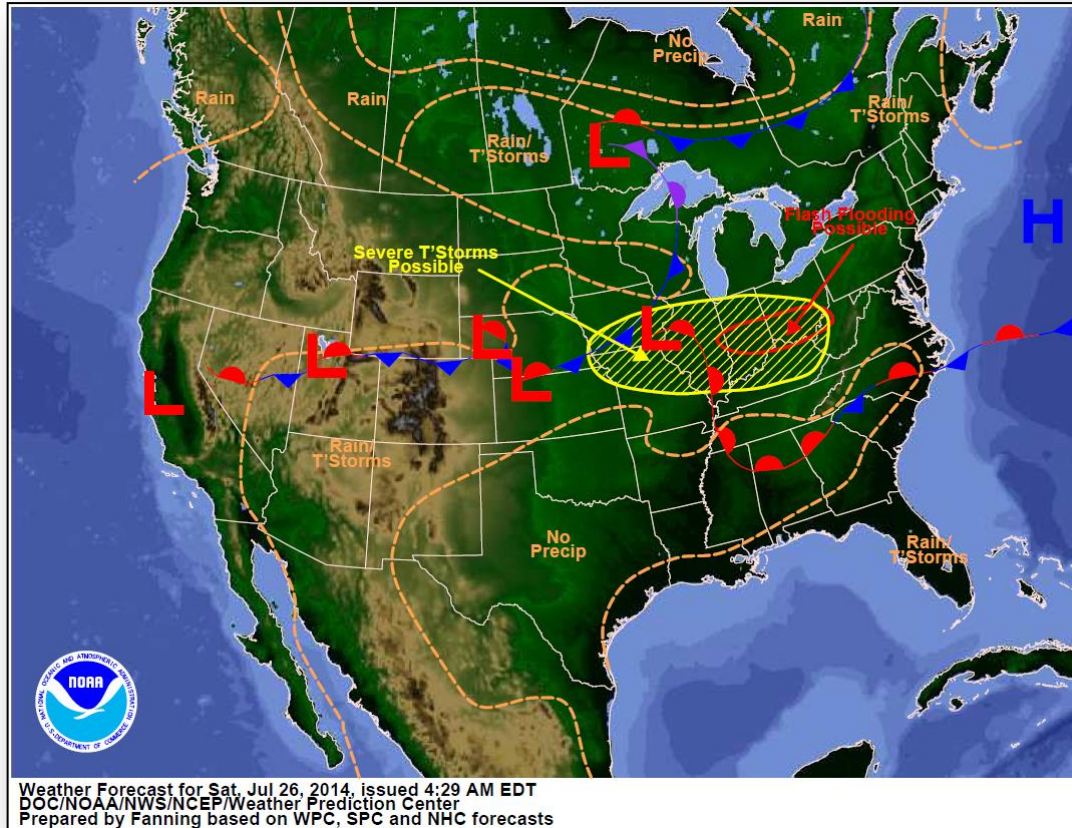


Region	State / Location	Event	IA/PA	Number of Counties		Start – End
				Requested	Complete	
V	MN	Severe Storms & Flooding June 11 (Red Lake Reservation & the Prairie Island Indian Community)	PA	49 counties & 2 tribes (+1)	29 / 2	7/1 – TBD
VIII	ND	Severe Storms & Flooding June 13 & continuing	PA	9	9	7/21 – 7/24
		Severe Storms & Flooding June 13 & continuing (Standing Rock Sioux Tribe)	PA	1	1	7/21 – 7/24

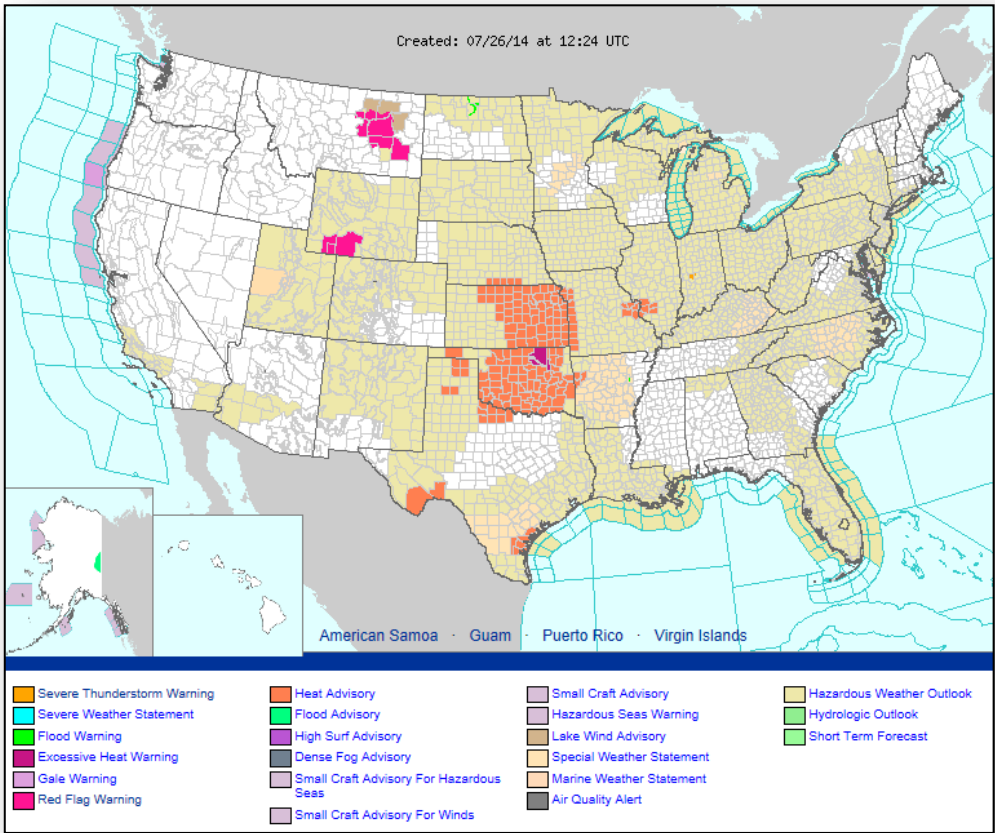
National Weather Forecast



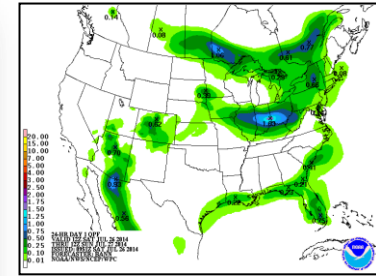
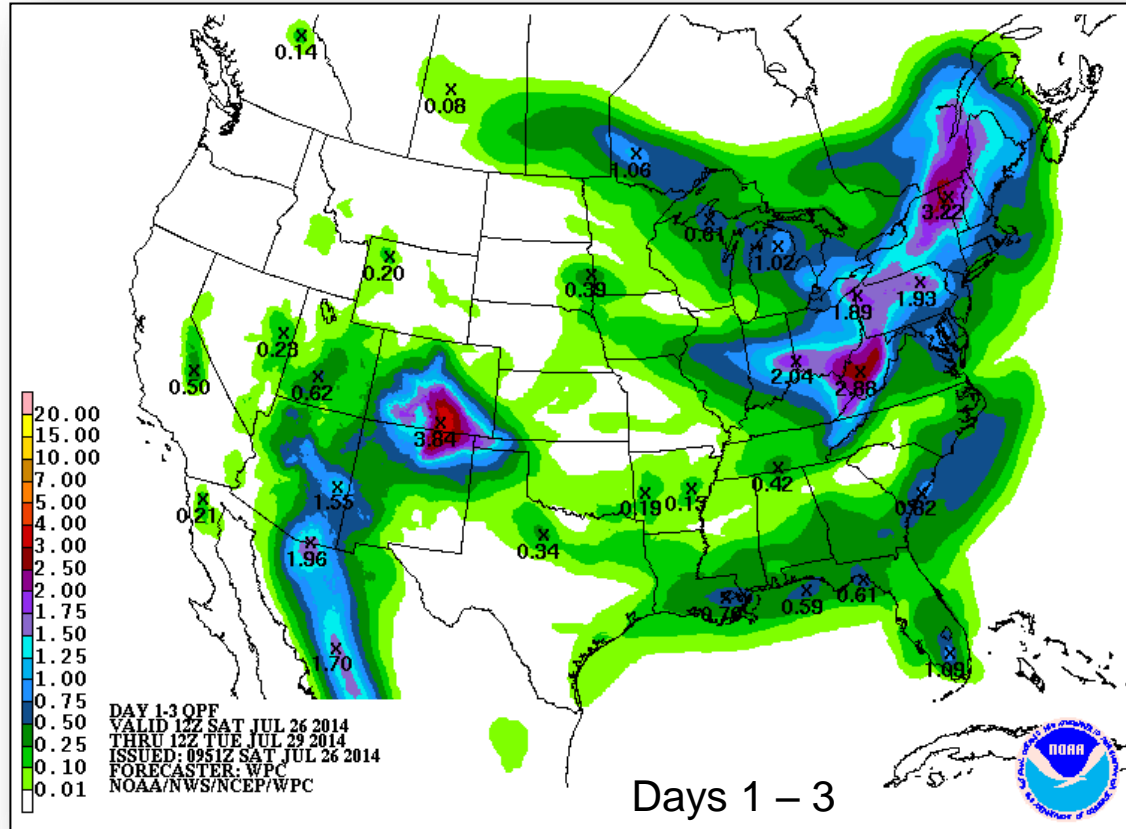
FEMA



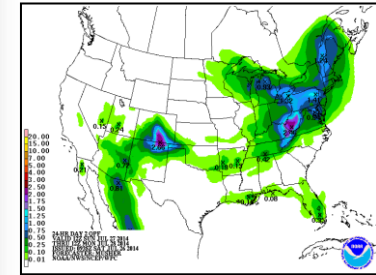
Active Watches/Warnings



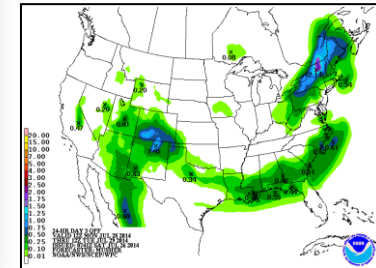
Precipitation Forecast – 3 Day



Day 1



Day 2

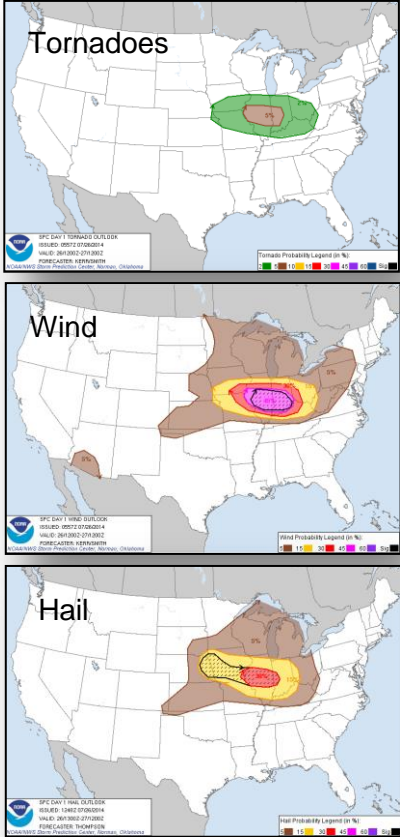
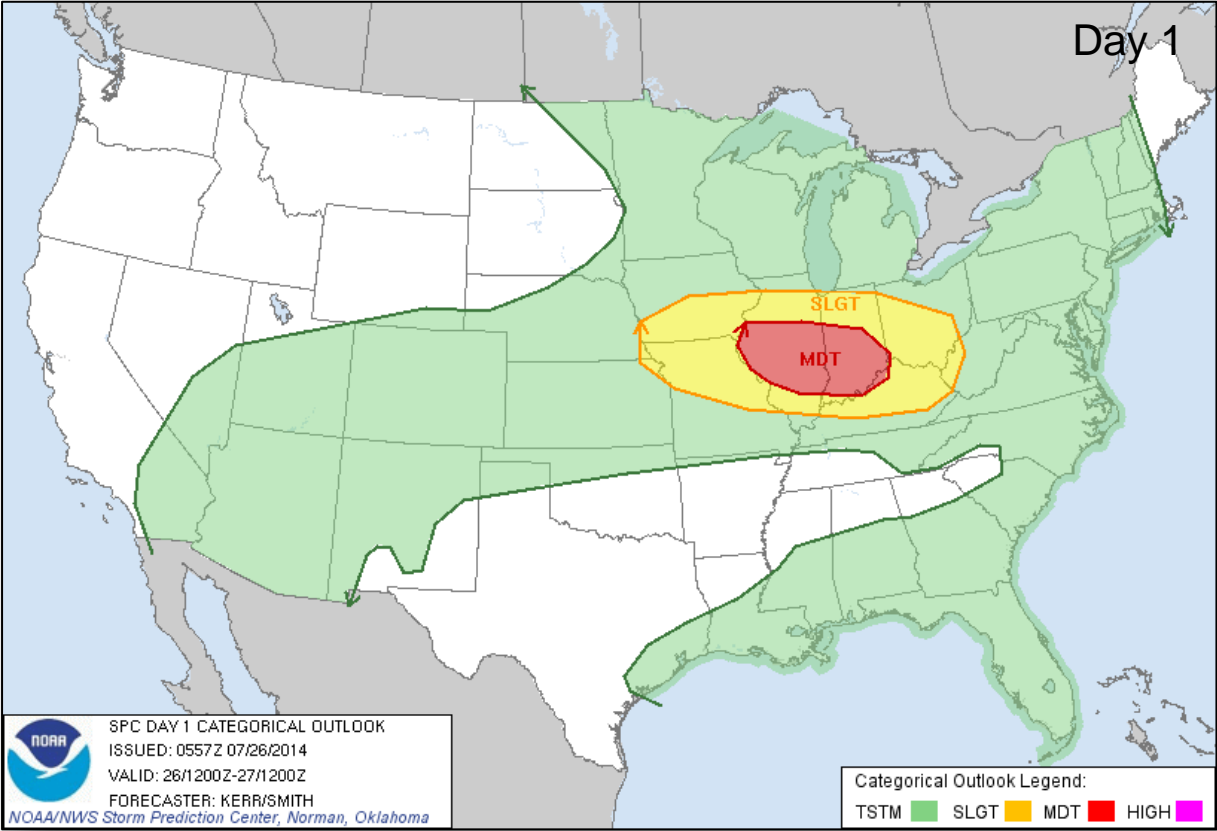


Day 3

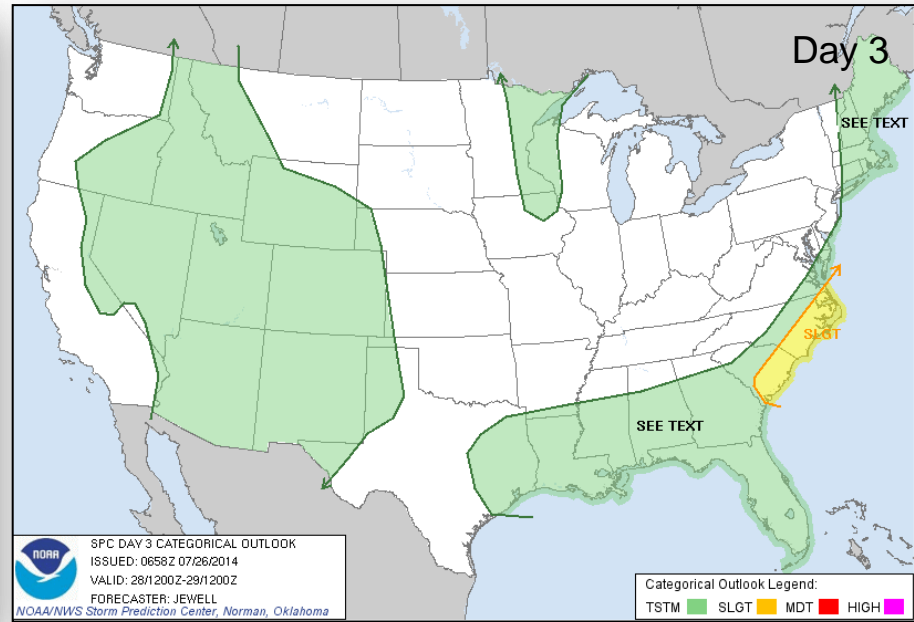
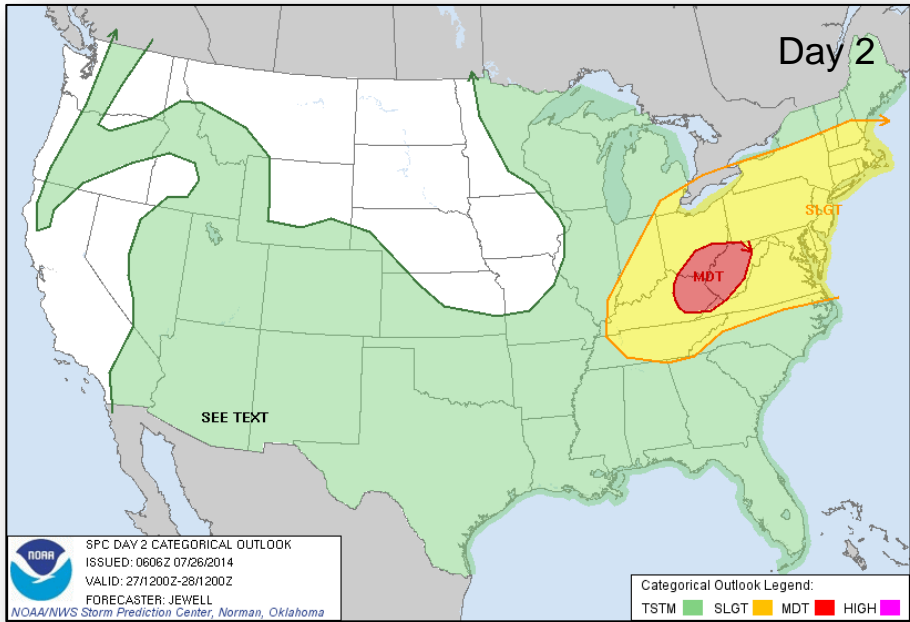
River Forecast



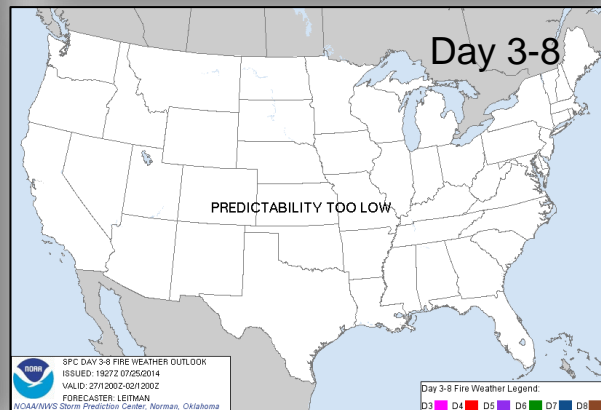
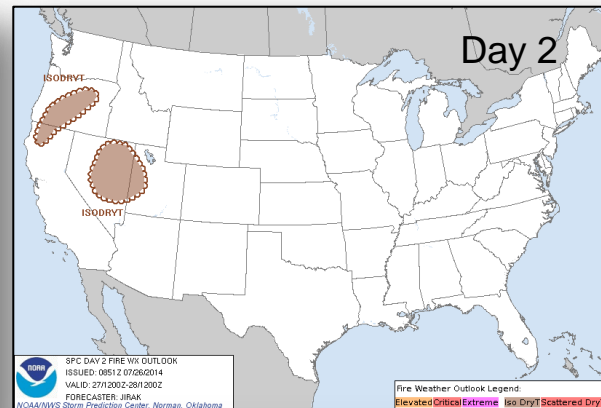
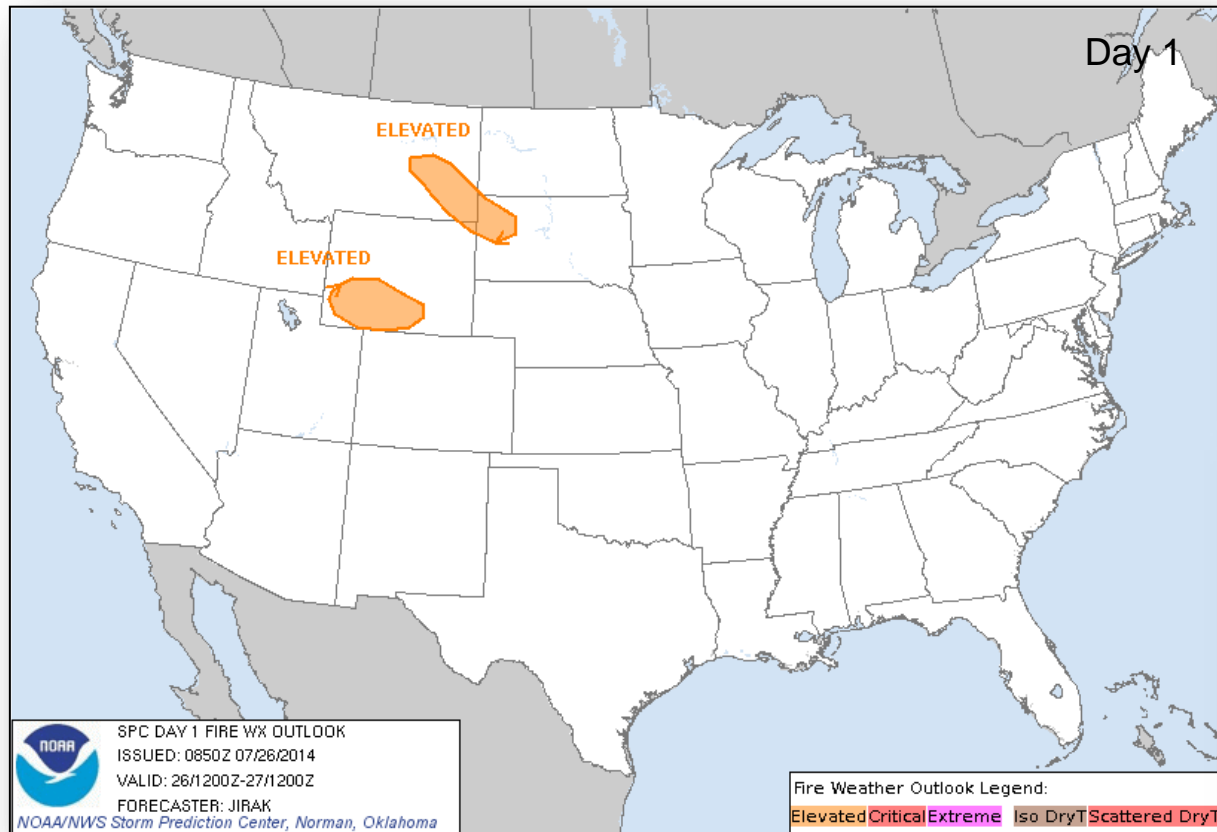
Convective Outlook, Day 1



Convective Outlook, Days 2 – 3



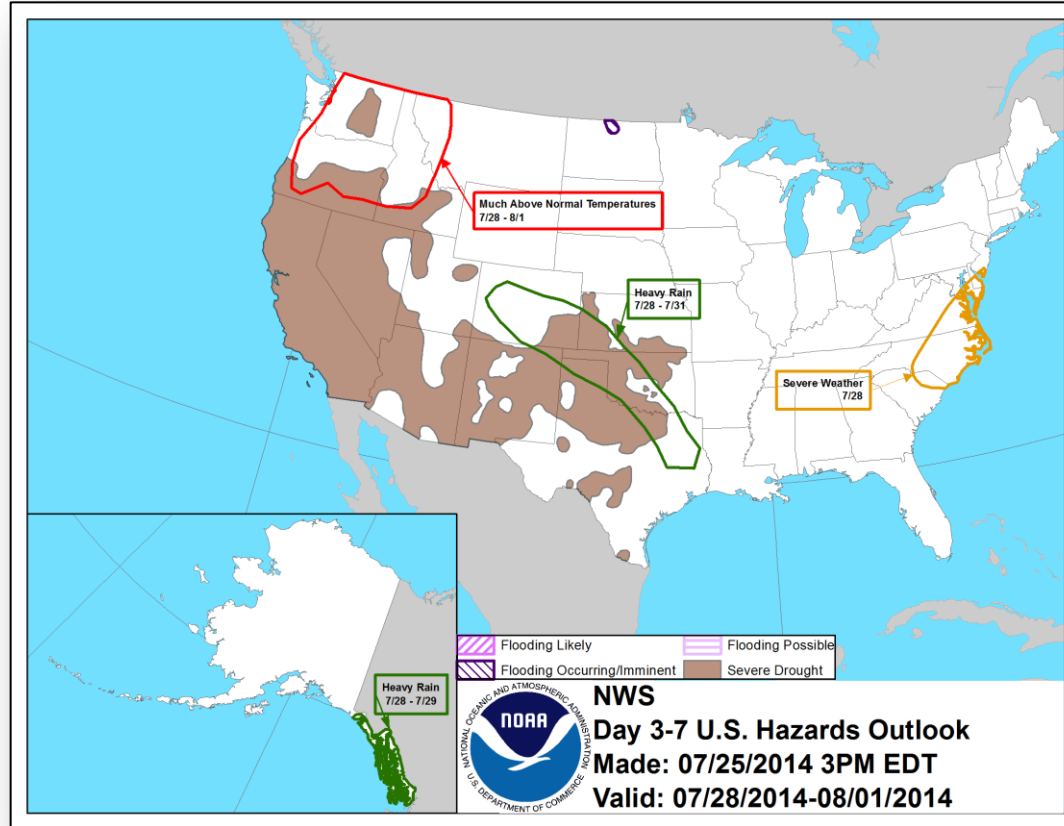
Critical Fire Weather Areas, Days 1 – 8



Hazard Outlook: July 28 – August 1



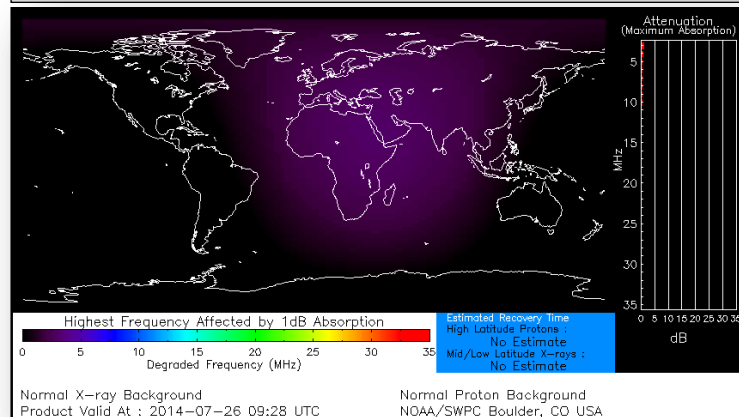
FEMA



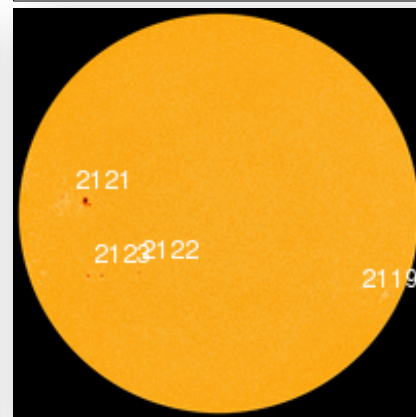
Space Weather

NOAA Scales Activity (Range: 1/minor to 5/extreme)	Past 24 Hours	Current	Next 24 Hours
Space Weather Activity:	None	None	None
• Geomagnetic Storms	None	None	None
• Solar Radiation Storms	None	None	None
• Radio Blackouts	None	None	None

HF Communication Impact



Sunspot Activity



FEMA Readiness – Deployable Teams/Assets



Deployable Teams/Assets									
Resource	Status	Total	Available		Partially Available	Not Available	Detailed Deployed Activated	Comments	Rating Criterion
FCO		39	12	31%	0	1	26		OFDC Readiness: FCO Green Yellow Red Type 1 3+ 2 1 Type 2 4+ 3 2 Type 3 4 3 2 FDRC 3 2 1
FDRC		10	4	40%	0	0	6		
US&R		28	26	93%	1	1	0	<ul style="list-style-type: none"> NM-TF1 (Red for personnel shortages) CA-TFI (Yellow for logistics and management factors) 	<ul style="list-style-type: none"> Green = Available/FMC Yellow = Available/PMC Red = Out-of-Service Blue = Assigned/Deployed
National IMAT		3	2	66%	0	0	1	<ul style="list-style-type: none"> National-IMAT West deployed to DC (NRCC) 	<ul style="list-style-type: none"> Green: 3 avail Yellow: 1-2 avail Red: 0 avail (<i>Individual N-IMAT red if 50% of Section Chiefs and/or Team Leader is unavailable for deployment.</i>)
Regional IMAT		13	4	31%	2	5	2	<u>Partially Mission Capable (PMC):</u> <ul style="list-style-type: none"> Region II & III <u>Not Mission Capable (NMC):</u> <ul style="list-style-type: none"> Region V, VI (Teams 1 & 2), VII & IX (Team 1) <u>Deployed</u> <ul style="list-style-type: none"> Region IX (Team 2) to HI; Region X to WA 	<ul style="list-style-type: none"> Green: 7 or more avail Yellow: 4 - 6 teams available Red: > 8 teams deployed/unavailable <p><i>R-IMAT also red if TL Ops/Log Chief is unavailable and has no qualified replacement.</i></p>
MCOV		55	50	91%	0	4	1	<ul style="list-style-type: none"> 1 MCOV in WA for wildfires 	<ul style="list-style-type: none"> Green = 80 – 100% avail Yellow = 60 – 79% avail Red = 59% or below avail Readiness remains 95%

FEMA Readiness – National/Regional Teams



National/Regional Teams									
Resource	Status	Total	Available		Partially Available	Not Available	Deployed/ Activated	Comments	Rating Criterion
NWC		5	5	100%	0	0	24/7	Enhanced Watch (dayshift)	<div>• Green = FMC</div> <div>• Yellow = PMC</div> <div>• Red = NMC</div>
NRCC		2	344	89%	0	44	Level I	ISO VR14	
HLT		1	N/A	N/A	0	1	Activated	Activated	
DEST							Not Activated		
RRCCs		10	10	100%	0	0	1	Region VIII – Enhanced (day only) Region X – Level-II (day only)	
RWCs/MOCs		10	10	100%	0	0	24/7	Region IV – Enhanced on July 27	



FEMA

FEMA's mission is to support our citizens and first responders to ensure that as a nation we work together to build, sustain, and improve our capability to prepare for, protect against, respond to, recover from, and mitigate all hazards.