



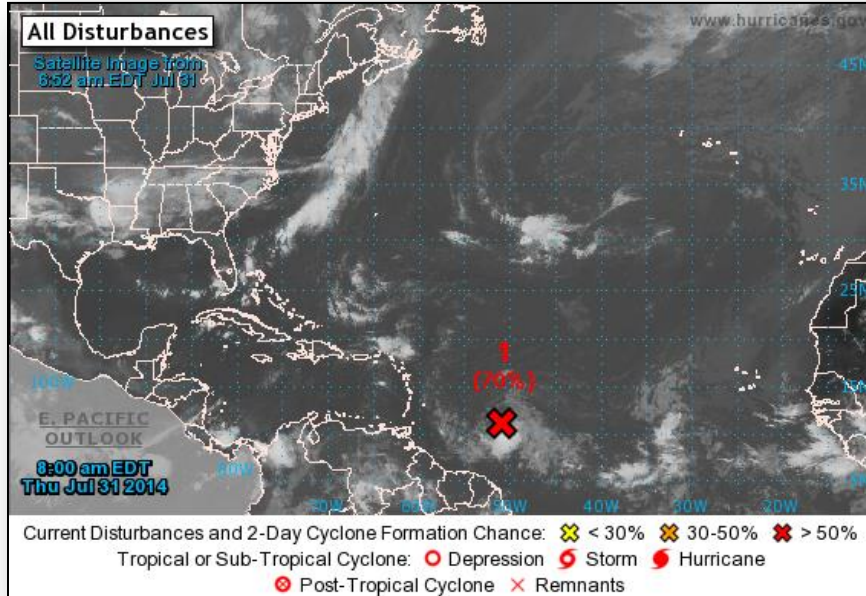
# **FEMA**

## **Daily Operations Briefing**

**Thursday, July 31, 2014**

**8:30 a.m. EDT**

# 2-Day Tropical Outlook – Atlantic



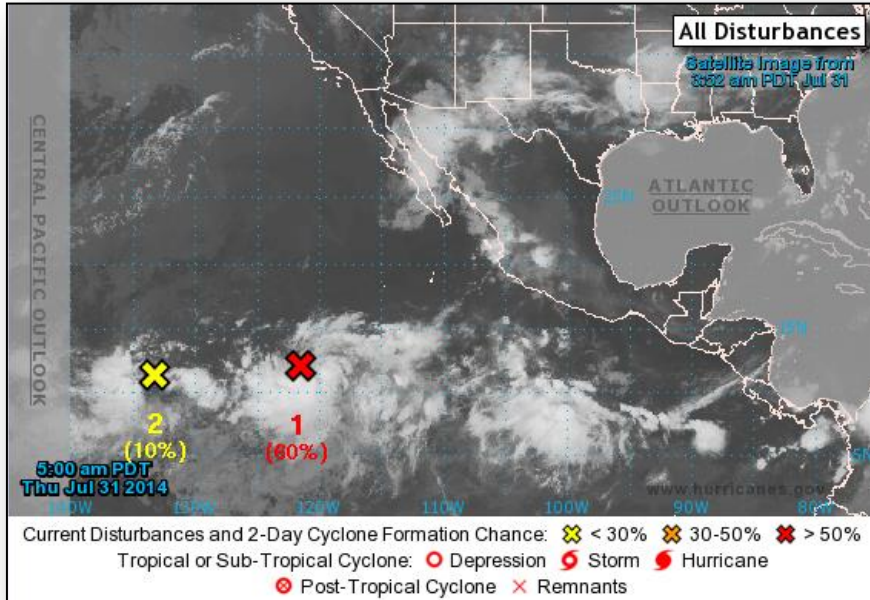
## Disturbance 1 (Invest 93L) (as of 8:00 am EDT)

- Located 650 miles east of the southern Windward Islands
- Moving WNW near 15-20 mph
- Producing organized shower and thunderstorm activity
- Tropical depression or tropical storm advisories could be initiated today
- A Hurricane Hunter aircraft is scheduled to investigate this afternoon
- Formation chance:
  - Next 48 hours – High (70%)
  - Next 5 days – High (70%)

## FEMA Region II Response

- Preliminary NHC storm models indicate this system could pass in the vicinity of USVI and/or Puerto Rico (CAD)
- VITEMA & PREMA EOCs monitoring at normal operations
- All Region II personnel on ALERT for possible activation:
  - RRCC Staff, ESF personnel & DCE
  - RWC at Enhanced Watch
  - IMAT CAD will remain in Puerto Rico
  - IMAT Silver on Alert for possible deployment to USVI

# 2-Day Tropical Outlook – Eastern Pacific



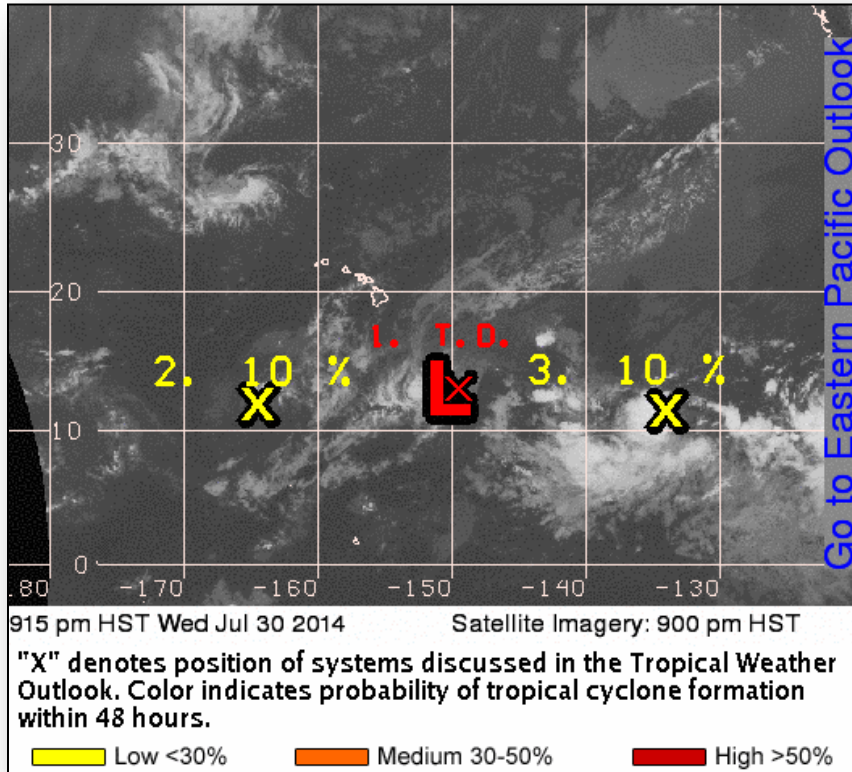
## Disturbance 1 (as of 8:00 am EDT)

- Located 1,100 miles SW of the southern tip of the Baja California peninsula, Mexico
- Moving WNW at 10 mph
- Showers & thunderstorms continue to increase; conditions appear conducive for further development
- Formation chance:
  - Next 48 hours: High (60%)
  - Next 5 days: High (80%)

## Disturbance 2 (as of 8:00 am EDT)

- Located 1,550 miles ESE of the Big Island of Hawaii
- Moving W at 10 mph
- Producing disorganized cloudiness & showers as it moves west
- Upper-level winds are marginally favorable for development; development should be slow over the next few days
- Formation chance:
  - Next 48 hours: Low (near 10%)
  - Next 5 days: Low (20%)

# Tropical Outlook – Central Pacific



## Tropical Depression Genevieve (as of 5:00 am EDT)

- Located 550 miles SE of Hilo, HI
- Direct impacts not expected for Hawaii
- Moving west 7 mph
- Maximum sustained winds of 35 mph
- Little change in intensity forecast through Friday

## Disturbance 2 (as of 5:00 am EDT)

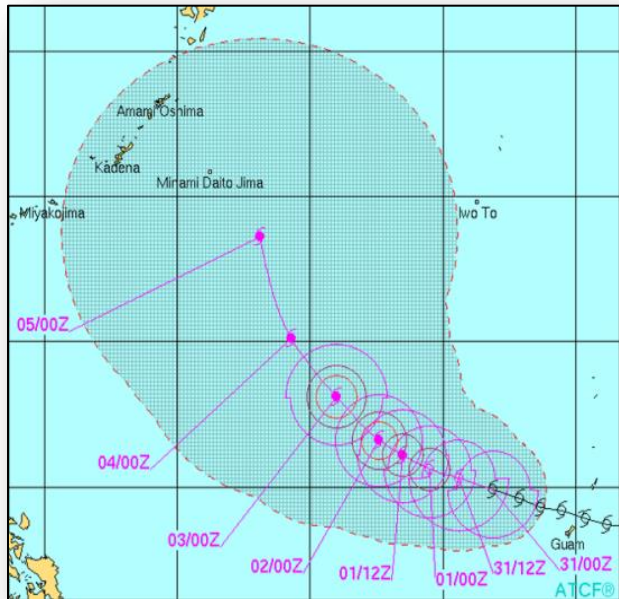
- Located 850 miles SSW of Oahu, HI
- Drifting slowly west
- Environment may permit system to develop slightly next couple days
- Formation chance through 48 hours: Low (10%)

## Disturbance 3 (as of 5:00 am EDT)

- Located 1,550 miles ESE of the Big Island of Hawaii
- Producing disorganized cloudiness & showers as it moves west
- Any further development should be slow to occur
- Formation chance through 48 hours: Low (10%)



# Tropical Outlook – Western Pacific



## **Tropical Storm 11W (Halong) FINAL** *(as of 5:00 am EDT)*

- Located 235 miles WNW of Guam
- Tracking away from U.S. interests
- Forecast to intensify over next 48 hours
- Moving W at 12 mph
- Maximum sustained winds 45 mph, gusting to 55
- All watches & warnings have been cancelled

## **Impacts:**

- No injuries or fatalities reported
- 3 shelters open on Guam overnight with 195 occupants
- No sustained damage to critical infrastructure
- Guam & CNMI seaports & airports returned to normal operations

## **Response:**

- RWC remains at Enhanced Watch
- Region IX LNOs have been released
- Region IX IMAT Team 2 demobilized with exception of 2 members
- Guam EOC Partially Activated; conducting damage assessments
- CNMI EOC at normal operations; will join Rota conducting damage assessments
- No shortfalls or unmet needs identified

# Wildfire Summary



Fire Name (County)	FMAG #	Acres burned	% Contained Est. Containment date	Evacuations (Residents)	Structures Threatened	Structures Destroyed	Fatalities / Injuries
<b>Washington (1)</b>							
Chiwaukum Complex (Chelan County)	FEMA-5061-FM July 17, 2014	13,120	27%	Mandatory	1,583	5 (+5) 0 Homes	0 / 2



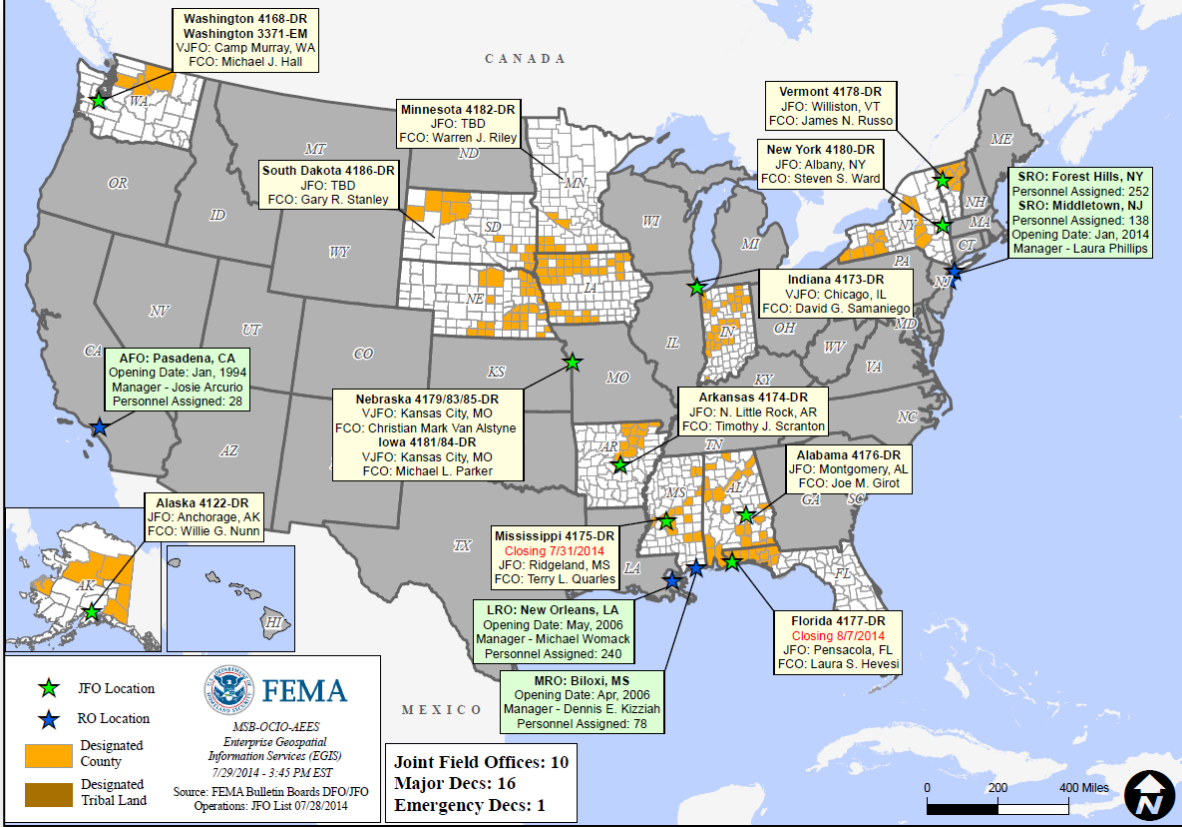
# Disaster Requests & Declarations



**FEMA**

<b>Declaration Requests in Process</b>		<b>Requests APPROVED (since last report)</b>	<b>Requests DENIED (since last report)</b>
<b>1</b>	<b>Date Requested</b>	<b>0</b>	<b>0</b>
<b>IA – Severe Storms, Tornadoes, Straight-line Winds, and Flooding</b>	<b>July 29, 2014</b>		

# Open Field Offices as of July 31, 2014





# Joint Preliminary Damage Assessments

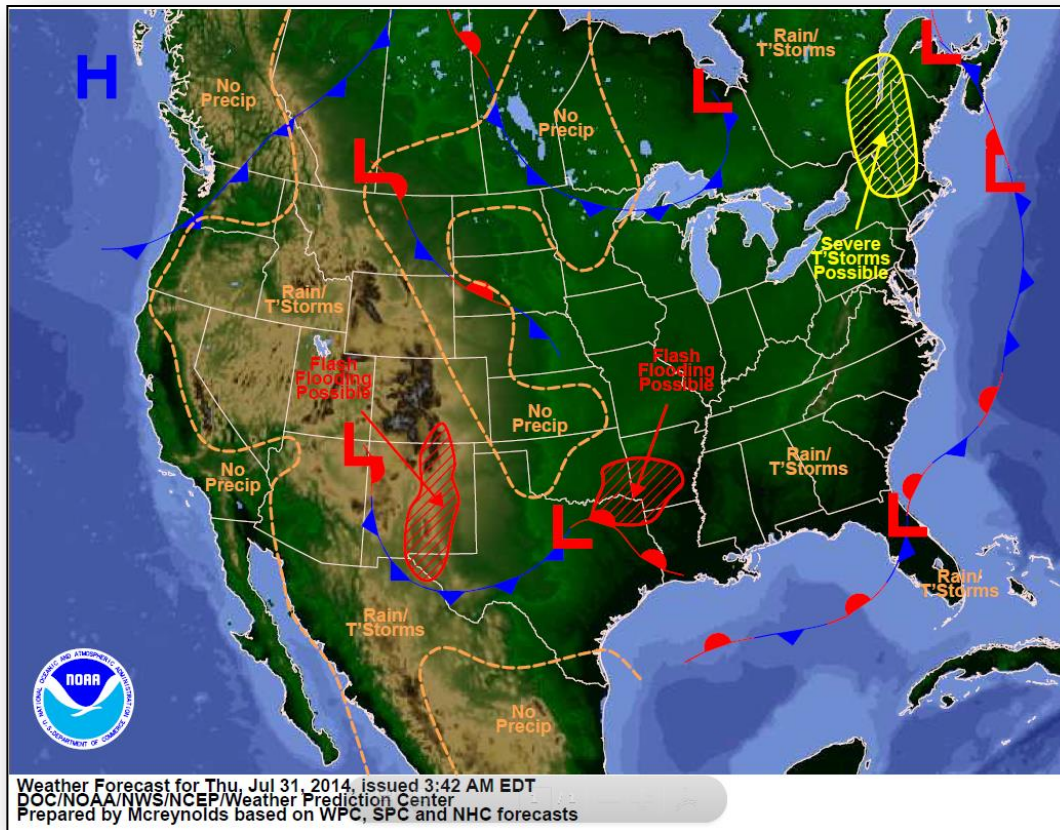


Region	State / Location	Event	IA/PA	Number of Counties		Start – End
				Requested	Complete	
V	MN	Severe Storms & Flooding June 11 (Red Lake Reservation & the Prairie Island Indian Community)	PA	49 counties & 2 tribes	29 / 2	7/1 – TBD

# National Weather Forecast



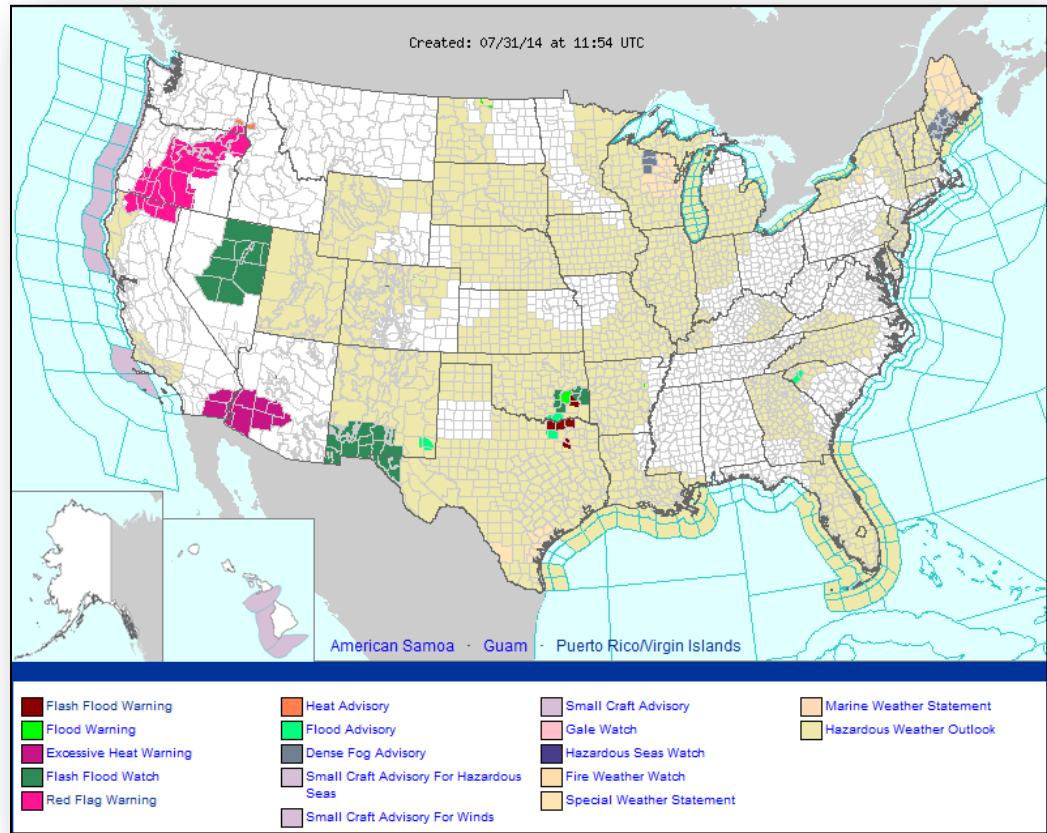
FEMA



# Active Watches/Warnings



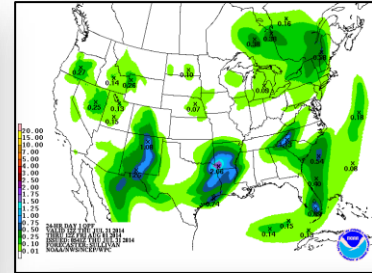
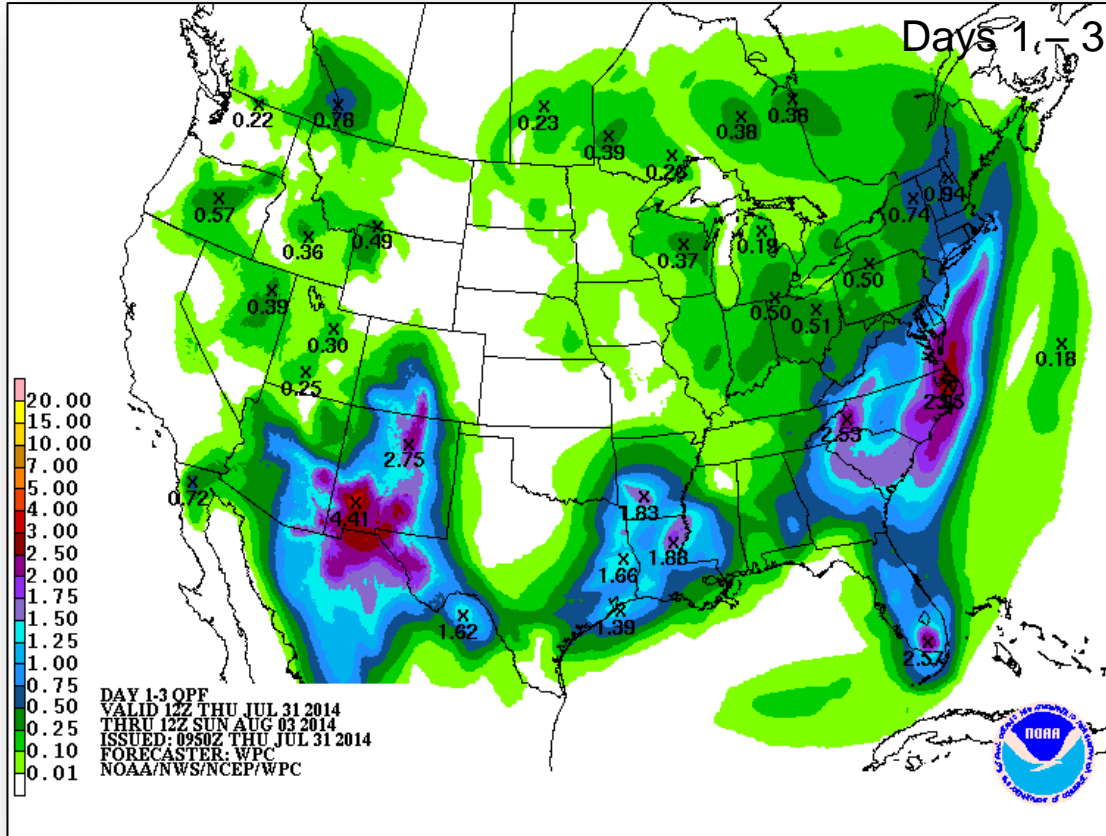
FEMA



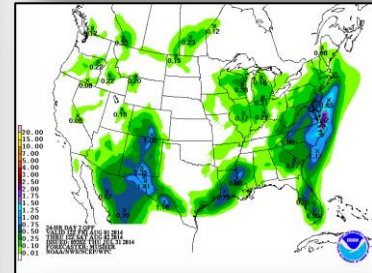
# Precipitation Forecast – 3 Day



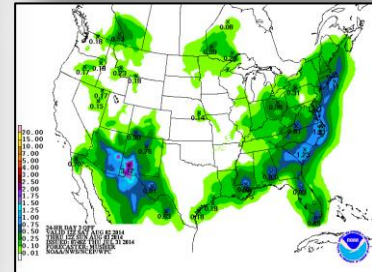
FEMA



Day 1

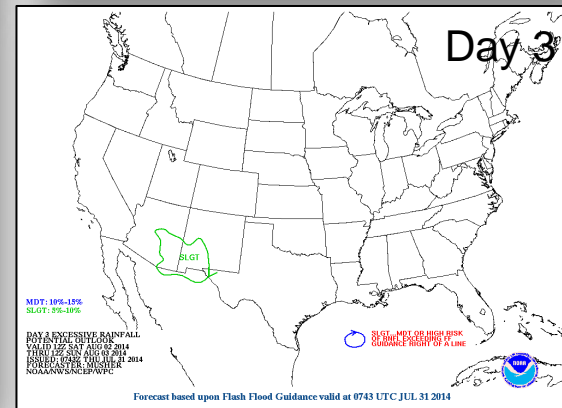
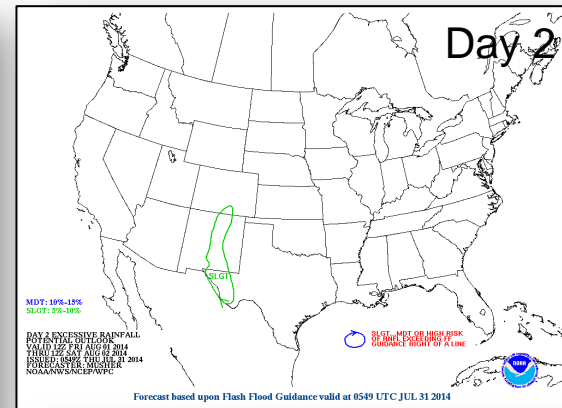
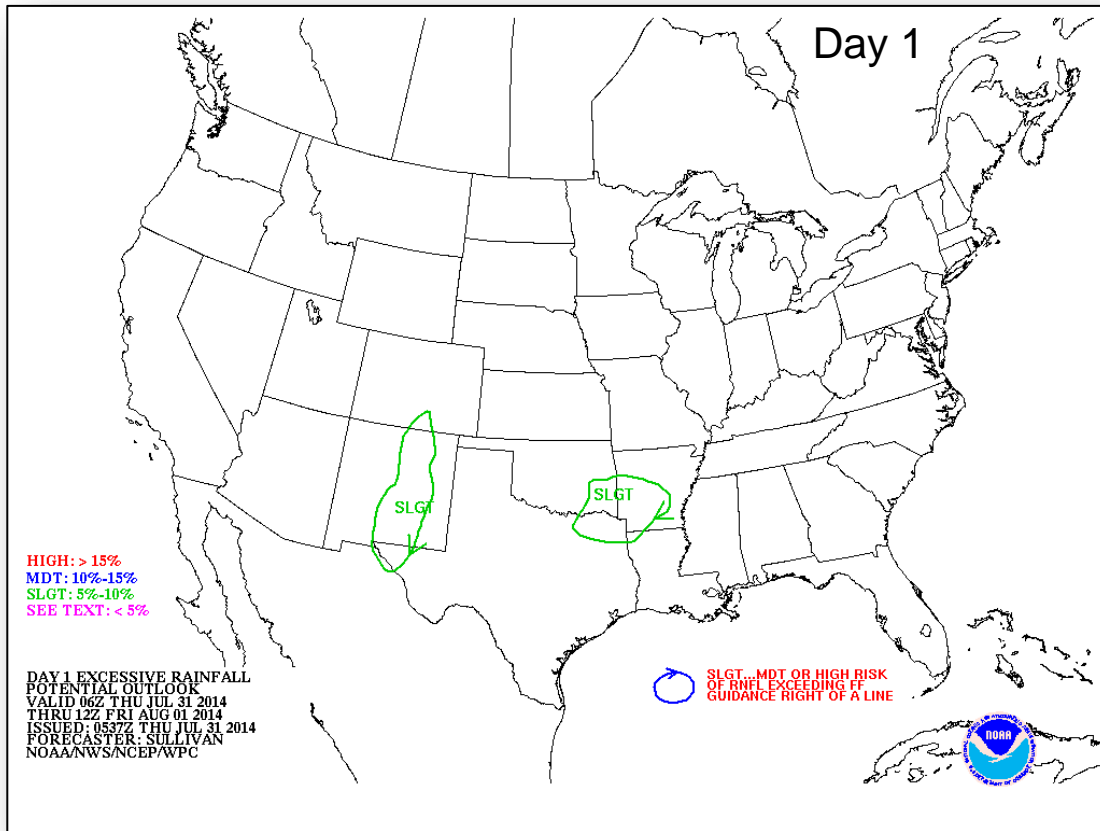


Day 2



Day 3

# Flash Flood Outlook— Days 1 – 3



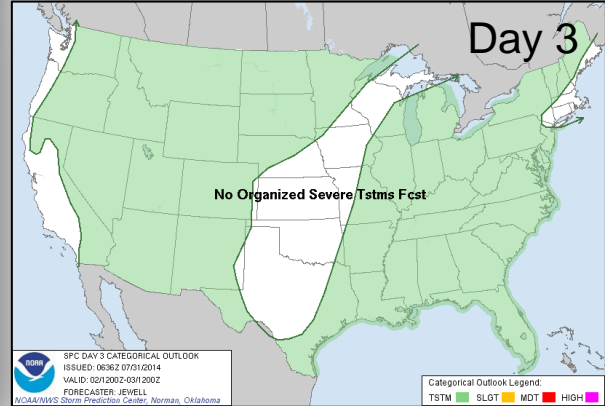
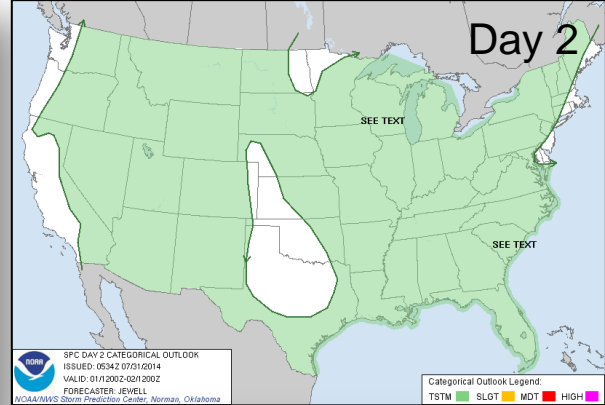
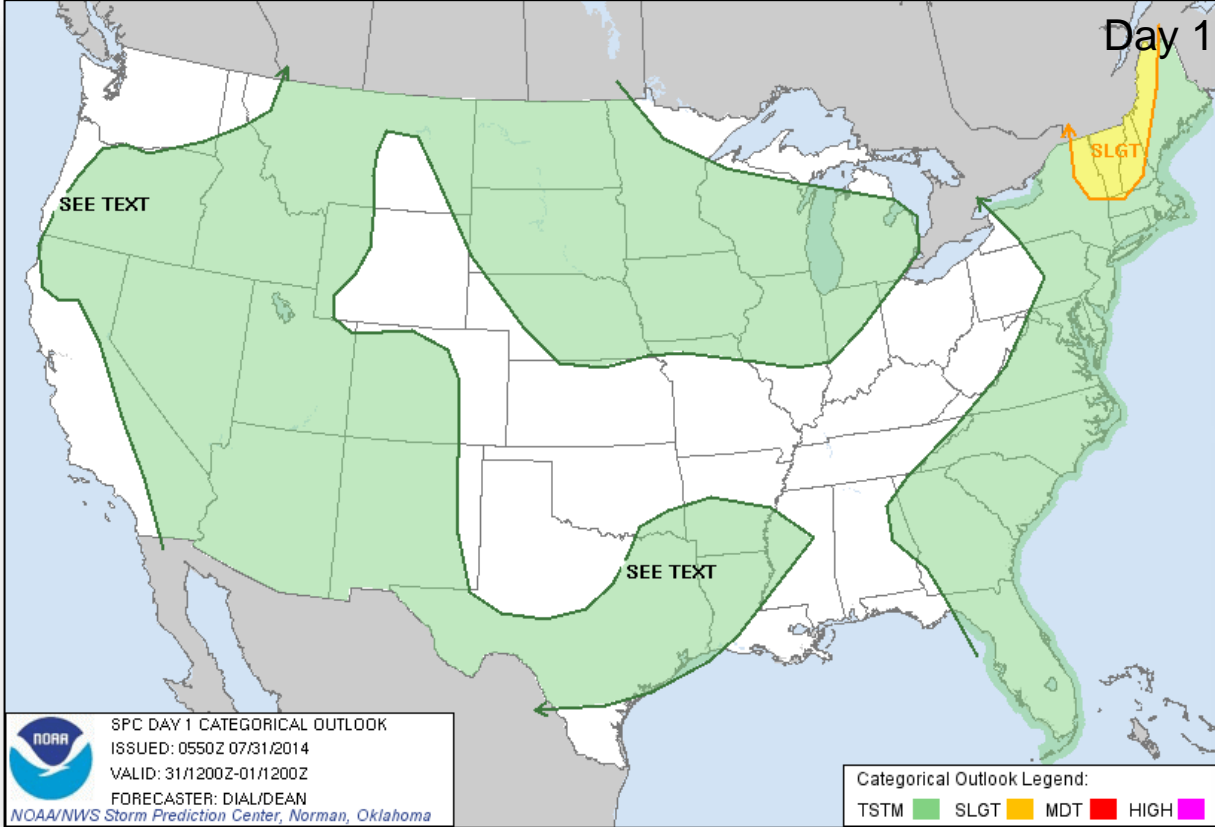


# River Forecast

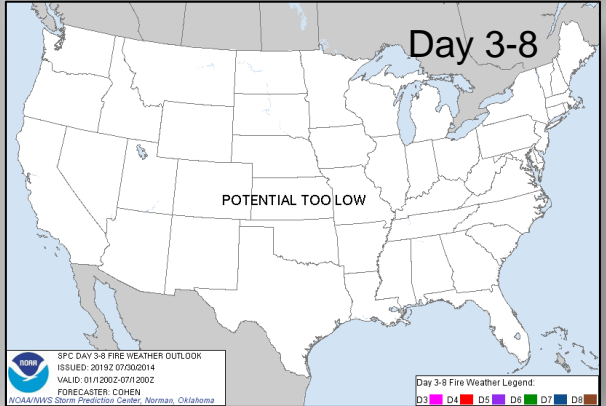
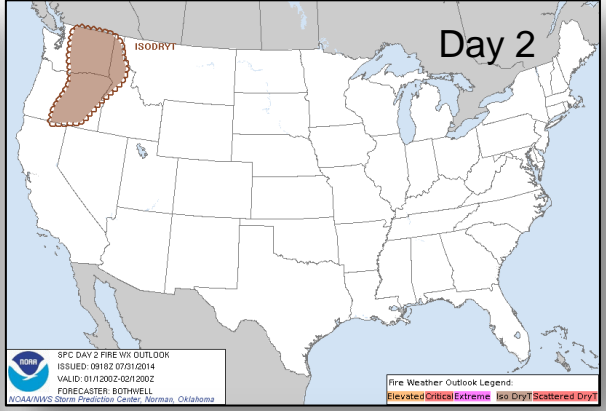
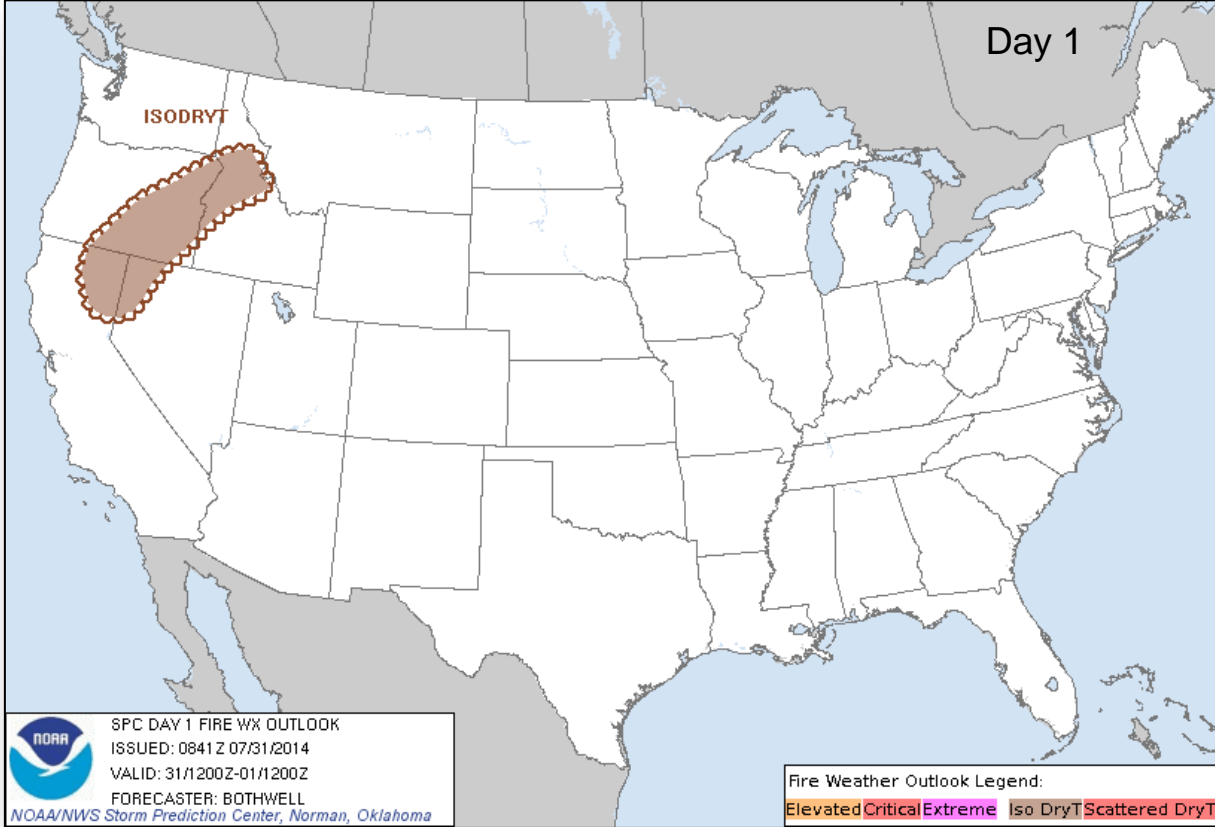




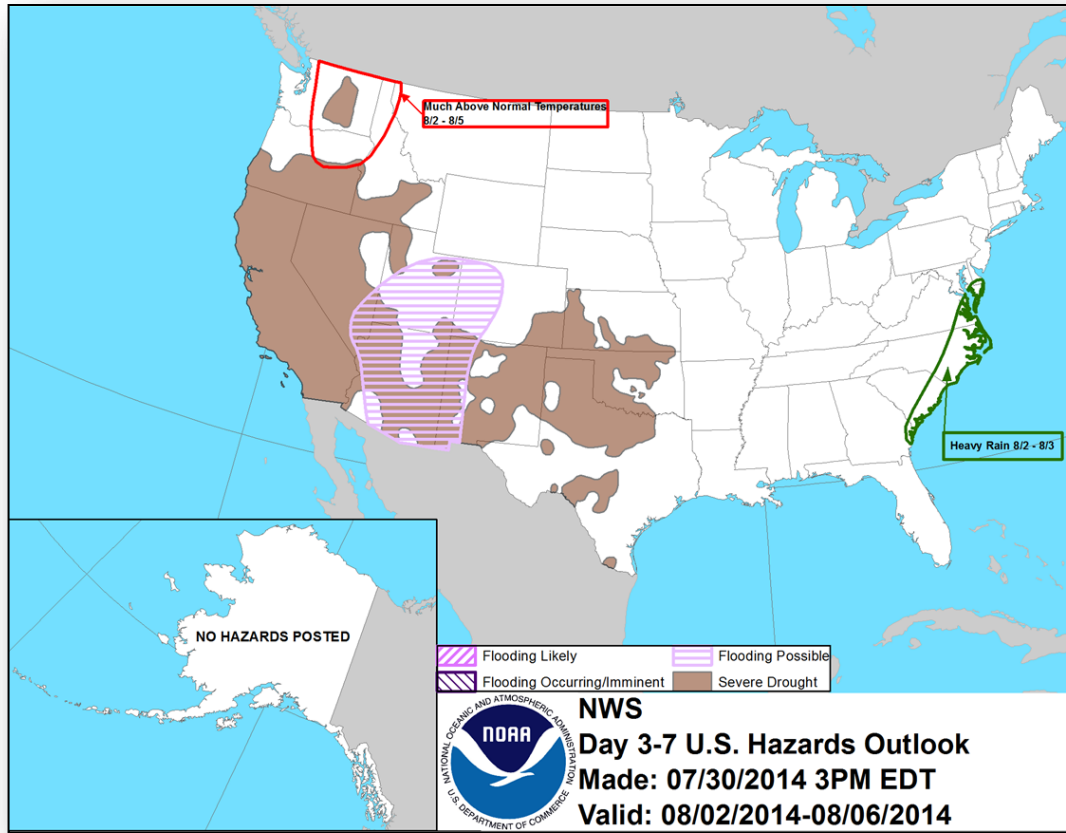
# Convective Outlook, Days 1 – 3



# Critical Fire Weather Areas, Days 1 – 8



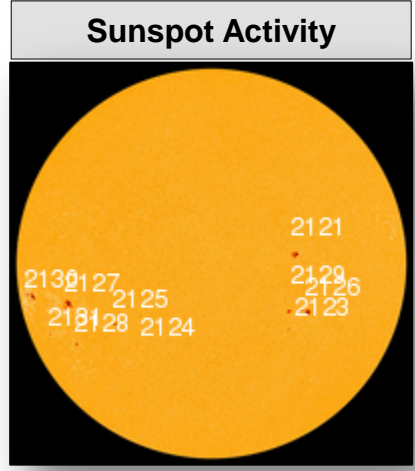
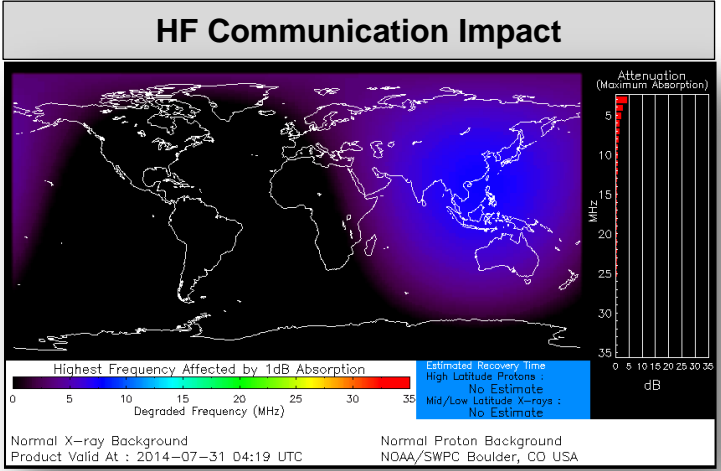
# Hazard Outlook: August 2 – August 6



# Space Weather



NOAA Scales Activity (Range: 1/minor to 5/extreme)	Past 24 Hours	Current	Next 24 Hours
Space Weather Activity:	None	None	None
• Geomagnetic Storms	None	None	None
• Solar Radiation Storms	None	None	None
• Radio Blackouts	None	None	None



# FEMA Readiness – Deployable Teams/Assets



Deployable Teams/Assets									
Resource	Status	Total	Available		Partially Available	Not Available	Detailed Deployed Activated	Comments	Rating Criterion
FCO	Green	39	13	33%	0	1	25		OFDC Readiness: FCO Green Yellow Red Type 1 3+ 2 1 Type 2 4+ 3 2 Type 3 4 3 2 FDRC 3 2 1
FDRC		10	4	40%	0	0	6		
US&R	Green	28	26	93%	1	1	0	<ul style="list-style-type: none"> <li>NM-TF1 (Red for personnel shortages)</li> <li>CA-TF1 (Yellow for logistics &amp; management)</li> </ul>	<ul style="list-style-type: none"> <li>Green = Available/FMC</li> <li>Yellow = Available/PMC</li> <li>Red = Out-of-Service</li> <li>Blue = Assigned/Deployed</li> </ul>
National IMAT	Yellow	3	2	66%	0	0	1	<ul style="list-style-type: none"> <li>National-IMAT West deployed to DC (NRCC)</li> </ul>	<ul style="list-style-type: none"> <li>Green: 3 avail</li> <li>Yellow: 1-2 avail</li> <li>Red: 0 avail (<i>Individual N-IMAT red if 50% of Section Chiefs and/or Team Leader is unavailable for deployment.</i>)</li> </ul>
Regional IMAT	Yellow	13	4	31%	4	4	1	<p><u>Partially Mission Capable (PMC):</u></p> <ul style="list-style-type: none"> <li>Region II, III, VI (Team 1) &amp; IX (Team 2)</li> </ul> <p><u>Not Mission Capable (NMC):</u></p> <ul style="list-style-type: none"> <li>Region V, VI (Team 2), VII &amp; IX (Team 1)</li> </ul> <p><u>Deployed</u></p> <ul style="list-style-type: none"> <li>Region X to WA</li> </ul>	<ul style="list-style-type: none"> <li>Green: 7 or more avail</li> <li>Yellow: 4 - 6 teams available</li> <li>Red: &gt; 8 teams deployed/unavailable</li> </ul> <p><i>R-IMAT also red if TL Ops/Log Chief is unavailable and has no qualified replacement.</i></p>
MCOV	Green	55	50	91%	0	4	1	<ul style="list-style-type: none"> <li>1 MCOV in WA for wildfires</li> </ul>	<ul style="list-style-type: none"> <li>Green = 80 – 100% avail</li> <li>Yellow = 60 – 79% avail</li> <li>Red = 59% or below avail</li> <li>Readiness remains 95%</li> </ul>

# FEMA Readiness – National/Regional Teams



National/Regional Teams									
Resource	Status	Total	Available		Partially Available	Not Available	Deployed/ Activated	Comments	Rating Criterion
NWC	Green	5	5	100%	0	0	24/7	Enhanced Watch (dayshift)	<ul style="list-style-type: none"> <li>• Green = FMC</li> <li>• Yellow = PMC</li> <li>• Red = NMC</li> </ul>
NRCC	Green	2	344	89%	0	44	Not Activated		
HLT	Green	1	N/A	N/A	0	1	Activated	Activated	
DEST	Green						Not Activated		
RRCCs	Green	10	10	100%	0	0	1	Region X: Level III (dayshift)	
RWCs/MOCs	Green	10	10	100%	0	0	24/7	Region II RWC - Enhanced Watch Region IX RWC - Enhanced Watch	



## Nationwide Monitoring Drill: July 31st

### The Goal:

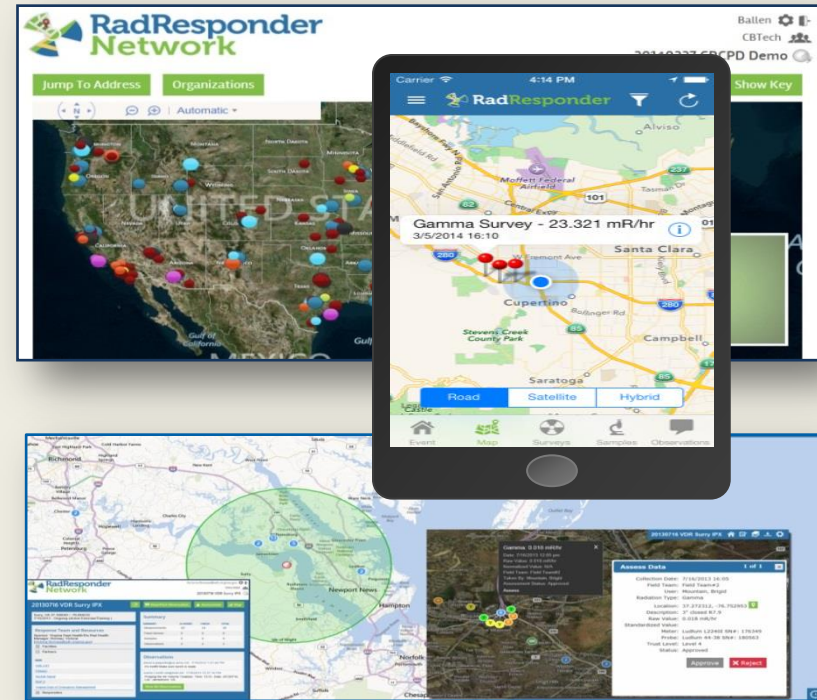
- The Conference of Radiation Control Program Directors ([CRCPD](#)), radiation professionals in State and local government that regulate the use of radiation sources, will execute a nationwide drill where numerous organizations simultaneously utilize RadResponder to upload and share data in a realistic manner.

### The Sponsors:

- FEMA/CBRNE
- DOE/NSA and EPA
- 17 States

### Objectives

- Provide a training opportunity.
- Evaluate how the Network responds to a realistic stress test.
- Evaluate the suitability of RadResponder's existing data management, data sharing, management, and integration processes.





# FEMA

**FEMA's mission is to support our citizens and first responders to ensure that as a nation we work together to build, sustain, and improve our capability to prepare for, protect against, respond to, recover from, and mitigate all hazards.**