



FEMA

Daily Operations Briefing

Wednesday, August 6, 2014

8:30 a.m. EDT

Significant Activity: August 5 – 6



Significant Events:

- Hurricane Iselle – Central Pacific
- Wildfire Activity – Northern California\Oregon\Washington

Tropical Activity:

- Atlantic – Tropical Storm Bertha
- Eastern Pacific – Hurricane Julio; Disturbance 1 (Low, 10%)
- Central Pacific – Hurricane Iselle; Tropical Storm Genevieve

Significant Weather:

- Isolated strong thunderstorms – Middle Mississippi Valley, primarily over Missouri
- Flash Flooding – Central Plains to Middle Mississippi Valley
- Space Weather – Past 24 hours: None; Next 24 hours: None
- Elevated Fire Weather & Red Flag Warnings – WA & OR

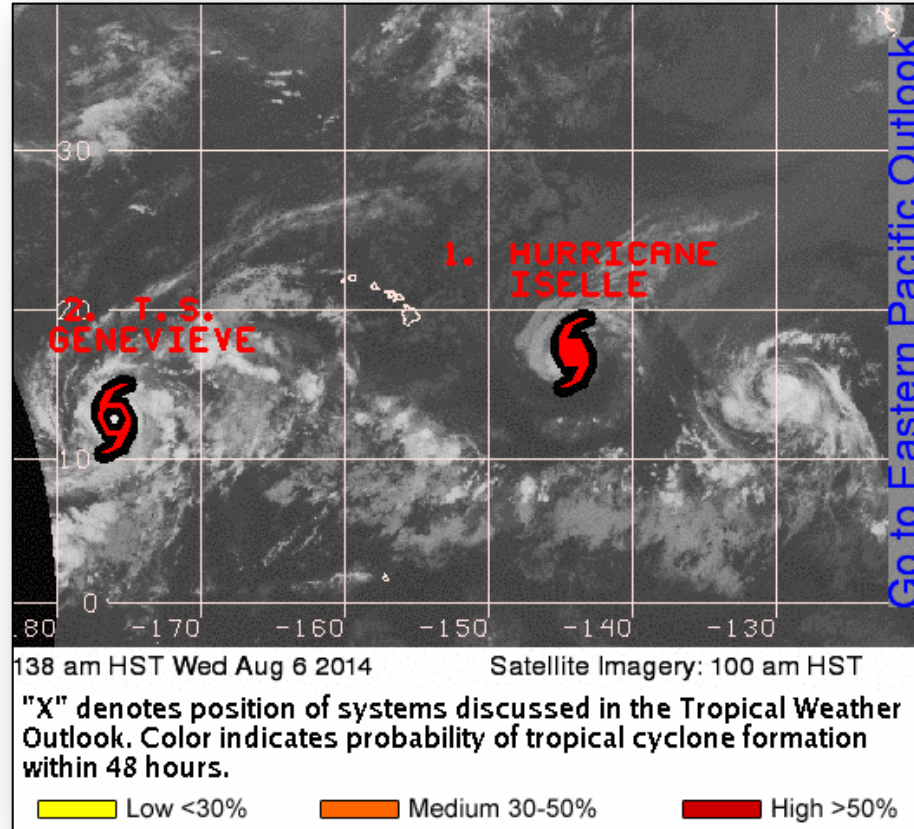
FEMA Readiness:

- Region V RRCC – Level III; Region IX & III RWCs: Enhanced Watch
- NWC – Enhanced Watch

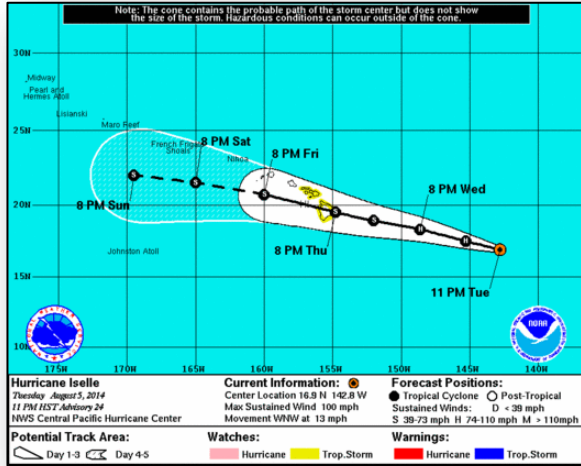
Disaster Activity:

- Major Disaster Declaration approved for Iowa

Tropical Outlook – Central Pacific



Tropical Outlook – Central Pacific



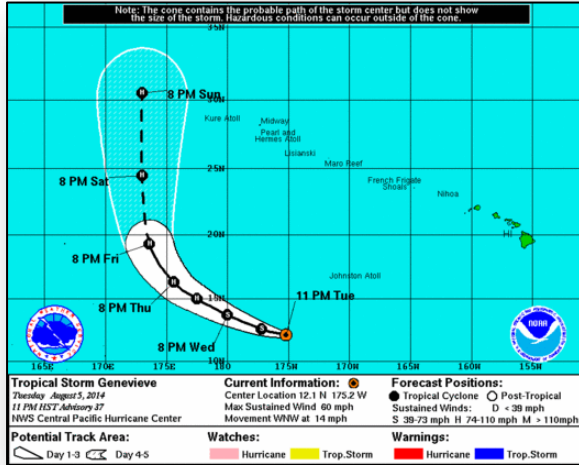
Hurricane Iselle (CAT 2) (as of 5:00 a.m. EDT)

- Located 830 miles east of Hilo, HI
- Moving WNW at 13 mph
- Slight increase in forward speed likely as Iselle approaches Hawaii
- Maximum sustained winds 100 mph (Category 2 Hurricane)
- Iselle continues to weaken, but still moving toward Hawaii
- Gradual weakening forecast; expected to become a tropical storm Thursday
- Hurricane-force winds extend 35 miles
- Tropical storm-force winds extend 155 miles
- Tropical Storm Watch/Flash Flood Watch in effect for Hawaii & Maui counties
 - Swells expected to reach main Hawaiian islands tonight/Wednesday
 - TS conditions/heavy rains possible on the Big Island of Hawaii on Thursday & portions of Maui County Thursday night
- Hawaii & Maui County & City/County of Honolulu will open shelters Thursday

FEMA Response:

- FEMA NWC at Enhanced Watch (Day shift only)
- FEMA Region IX deployed IMAT team & select ESFs to HI
- ISB/FSA Advanced Team deployed to Oahu, HI

Tropical Outlook – Central Pacific



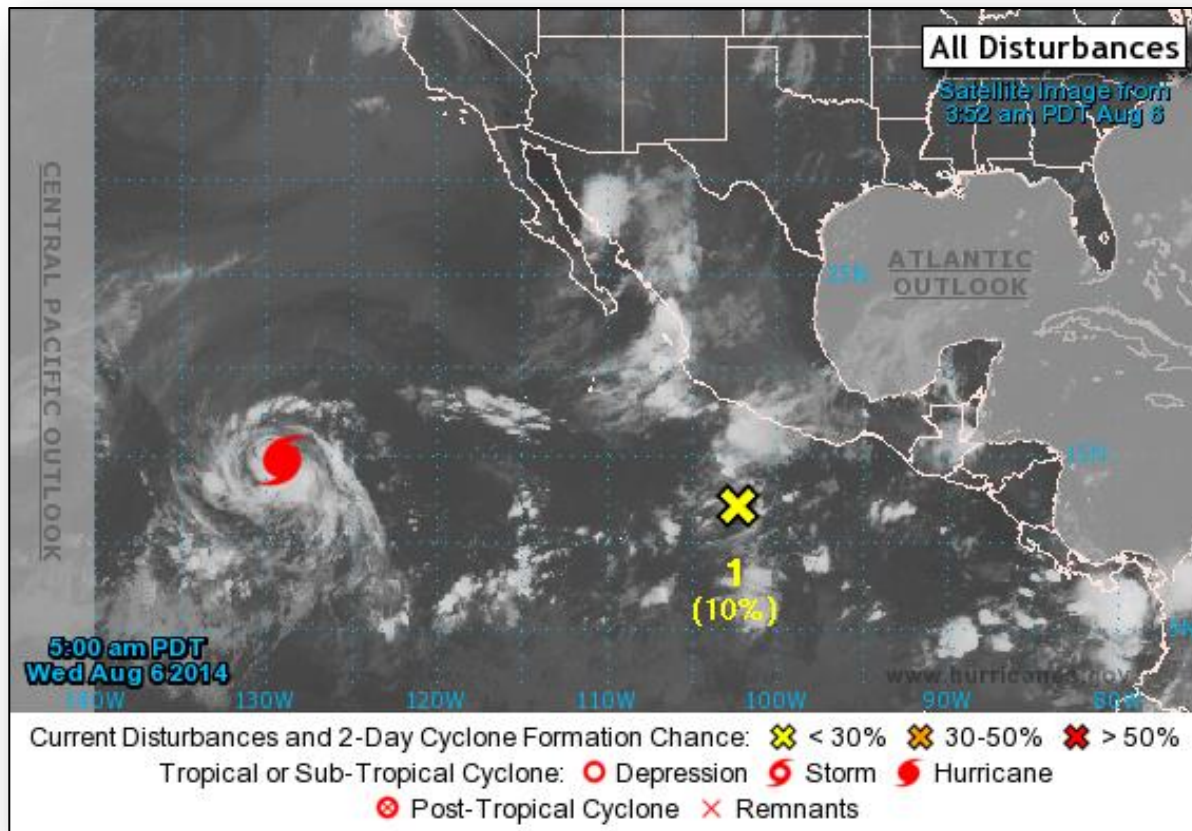
Tropical Storm Genevieve (as of 5:00 a.m. EDT)

- Located 1,270 miles WSW of Honolulu, Hawaii
- Moving WNW at 14 mph
- Maximum sustained winds are near 45 mph
- Strengthening is forecast; expected to become a typhoon next day or two
- Tropical storm force winds extend outward up to 25 miles
- No coastal watches/warnings in effect
- No unmet needs and no requests for FEMA assistance

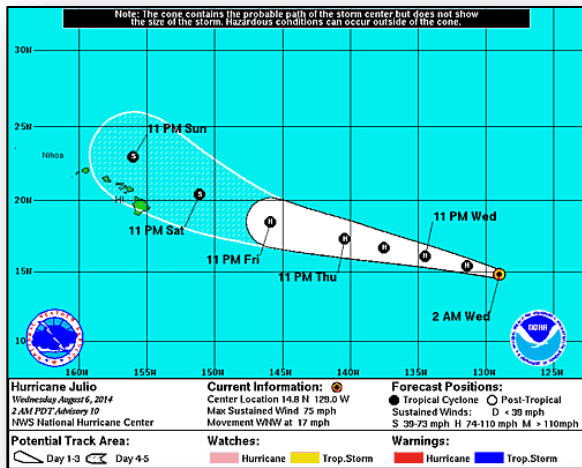
Tropical Outlook – Eastern Pacific



FEMA

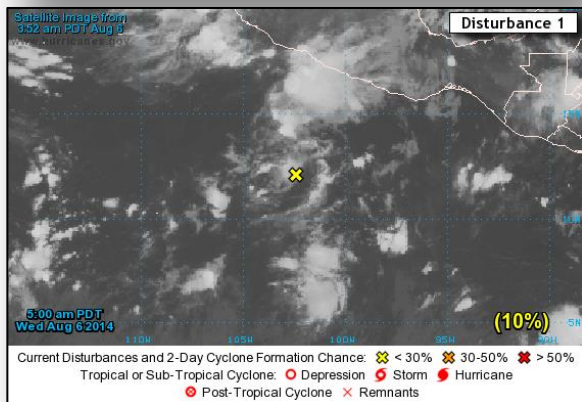


Tropical Outlook – Eastern Pacific



Hurricane Julio (as of 5:00 a.m. EDT)

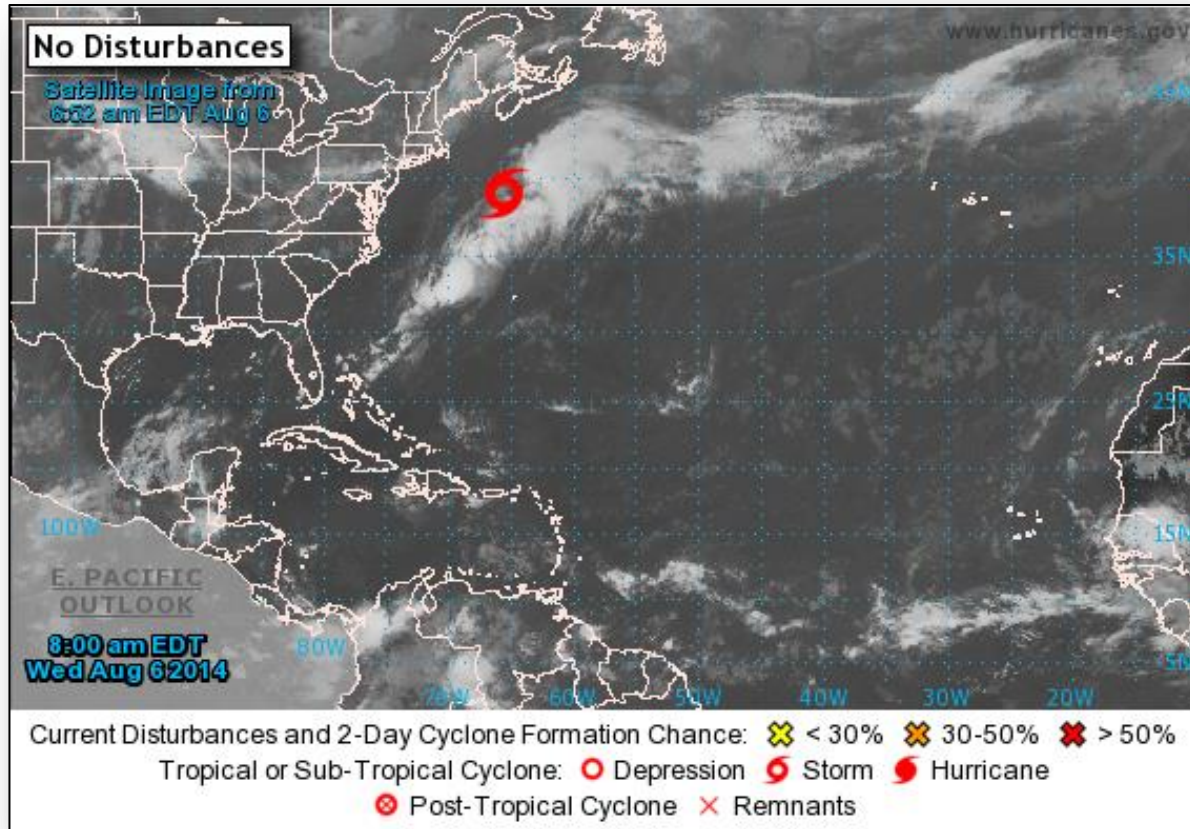
- Located 1,750 miles east of Hilo, HI
- Moving WNW at 17 mph
- Maximum sustained winds 75 mph
- Some strengthening forecast during the next day or so
- Hurricane-force winds extend outward up to 15 miles
- Tropical storm-force winds extend 105 miles



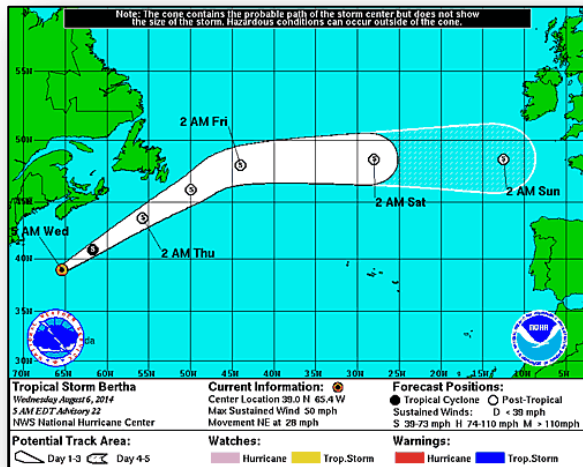
Disturbance 1 (as of 2:00 a.m. EDT)

- Disorganized showers & thunderstorms several hundred miles SSW of Acapulco, Mexico
- Moving W to WNW at 10-15 mph
- Development, if any, is expected to be slow
- Formation chance through 48 hours: Low (10%)
- Formation chance through 5 days: Low (20%)

Tropical Outlook – Atlantic



Tropical Outlook – Atlantic



Tropical Storm Bertha (as of 5:00 a.m. EDT)

- Located 400 miles SSW of Halifax Nova Scotia
- Moving NE at 28 mph
- Maximum sustained winds 50 mph
- A turn NE and NNE with an increase in speed next 48 hours
- Slow weakening forecast during next 48 hours
- Expected to become Post-Tropical or Extratropical by tonight
- Tropical storms force-winds extend outward 140 miles
- No coastal watches/warnings in effect
- No unmet needs and no requests for FEMA assistance

Hansel Fire – Washington



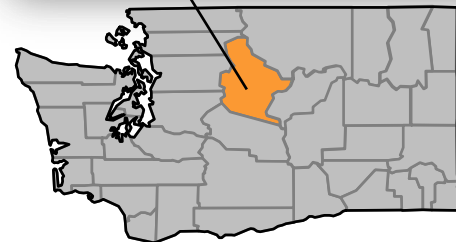
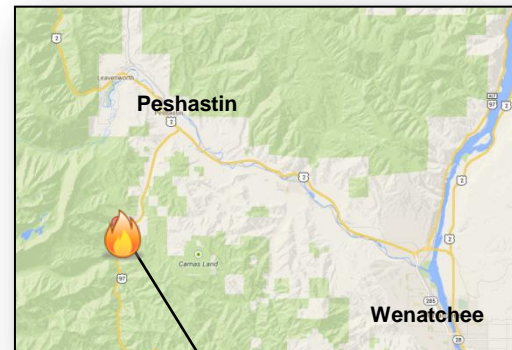
Fire Name	Location	Acres burned	% Contained	Est. Full Containment	FMAG	Structures Lost / Threatened	Fatalities / Injuries
Hansel Fire	Chelan County	1,500	0%	N/A	Approved August 6	0 / 220 homes	0 / 0

Situation

- Started August 2, ¼ mile south of the community of Hansel & seven miles south of Peshastin (pop. 1,500)
- 1,500 acres of Federal & private land burned, 0% containment
- 220 homes, 2 WADOT facilities, a Fire District Station & power lines threatened
- Mandatory evacuation of 720 residents
- Type 1 IMT requested

Response

- WA EOC at Full Activation for wildfires
- 3 shelters with 4 occupants Statewide (*ARC, Aug 6 at 5:00 am EDT*)
- FEMA Region X RRCC not activated; RWC monitoring 24/7
 - Region X LNO remains deployed to WA EOC
- Fire Management Assistance Grant (FEMA-5072-FM-WA) approved August 6



 Chelan County, WA

Wildfire Summary



Fire Name (County)	FMAG #	Acres burned	% Contained Est. Containment date	Evacuations (Residents)	Structures Threatened	Structures Destroyed	Fatalities / Injuries
Washington (3)							
Chiwaukum Complex (Chelan County)	FEMA-5061-FM July 17, 2014	17,935 (+841)	35%	Voluntary	1,583 homes	4 (0 homes)	0 / 5
Snag Canyon (Kittitas County)	FEMA-5071-FM August 3, 2014	3,500 (+500)	10%	Mandatory	50	8-12	0 / 0
Hansel Fire (Chelan County)	FEMA-5072-FM August 6, 2014	1,500	0%	Mandatory	220 homes	0	0 / 0
California (4)							
Day Fire (<i>FINAL</i>) (Modoc County)	FEMA-5070-FM August 3, 2014	13,047	70% (+10)	Lifted	0 (-150 homes)	5 homes 1 other	0 / 5
Eiler Fire (Shasta County)	FEMA-5067-FM August 2, 2014	31,085 (+2,485)	35% (+25)	Mandatory	715 (705 homes)	8 homes 21 other	0 / 0
Oregon Gulch Fire (Siskiyou County)	FEMA-5068-FM August 2, 2014	9,464	30% (+10)	Mandatory	99 homes (92 homes)	0	0 / 0
Bald Fire (Lassen County)	FEMA-5069-FM August 2, 2014	39,850	30% (+10)	Mandatory	40 homes	0	0 / 0
Oregon (1)							
Beaver Complex (Jackson & Klamath counties)	FEMA-5066-FM August 1, 2014	36,723	35% (+5)	Mandatory	270 (100 homes)	11 (3 homes)	0 / 5

Disaster Requests & Declarations



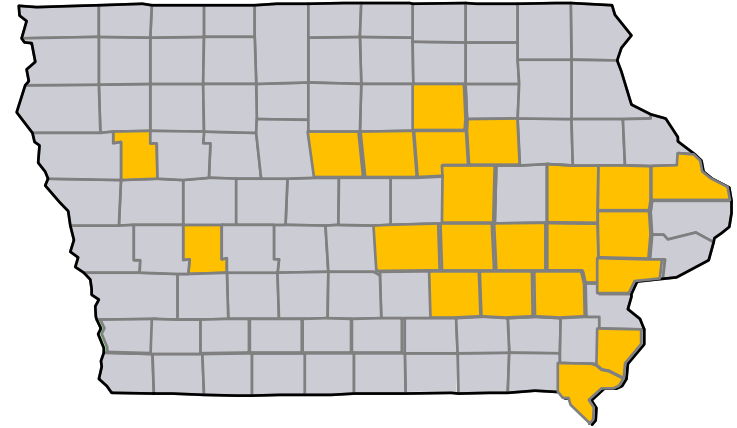
Declaration Requests in Process		Requests APPROVED (since last report)	Requests DENIED (since last report)
1	Date Requested	1	0
IA – Severe Storms, Tornadoes, Straight-line Winds, and Flooding	July 28, 2014	August 5, 2014 FEMA-4187-DR-IA	
TN – Severe Storms, Tornadoes, Straight-line Winds, and Flooding	August 4, 2014		

Major Disaster Declaration – Iowa



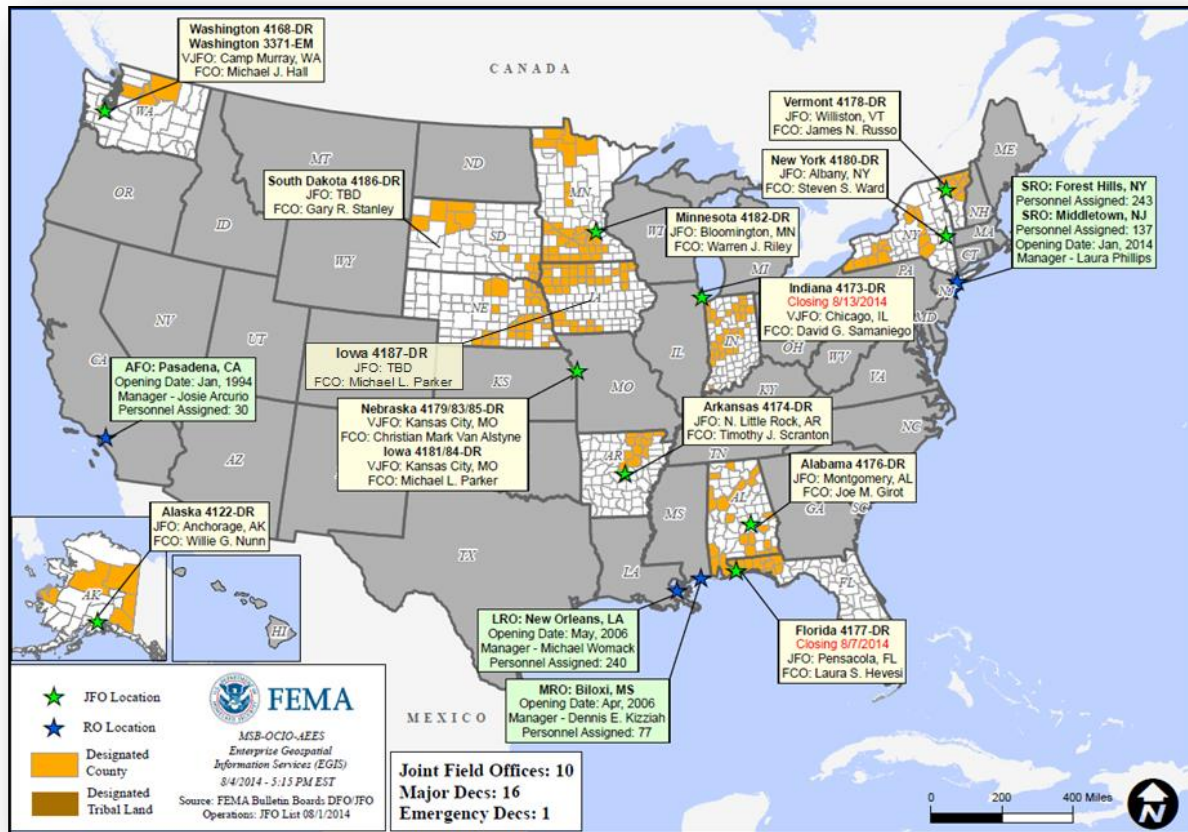
FEMA-4187-DR

- Major Disaster Declaration approved Aug 5, for State of Iowa
- For severe storms, tornadoes, straight-line winds, and flooding that occurred June 26 – July 7, 2014
- Provides:
 - Public Assistance, including Direct Federal Assistance, for 22 counties
 - Hazard Mitigation statewide
- FCO is Michael L. Parker



■ Declared PA counties

Open Field Offices as of August 6, 2014



Joint Preliminary Damage Assessments

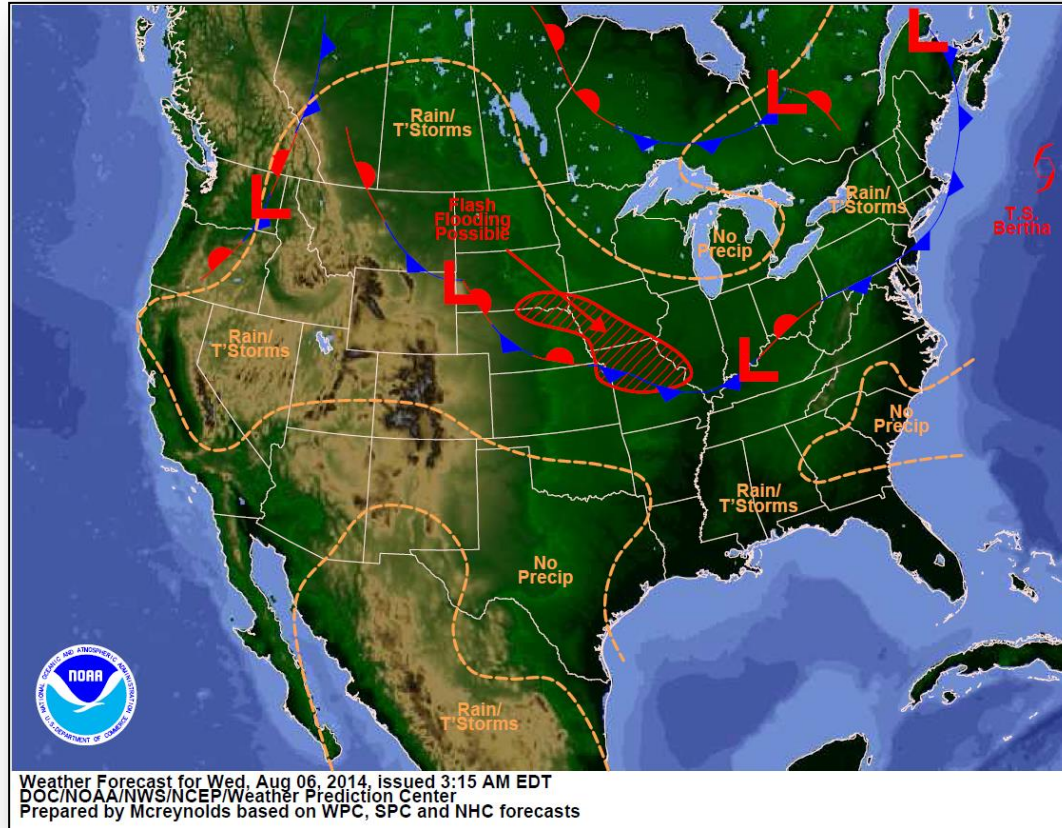


Region	State / Location	Event	IA/PA	Number of Counties		Start – End
				Requested	Complete	
I	VT	Flooding July 28, 2014	PA	2	0	8/5 – TBD

National Weather Forecast

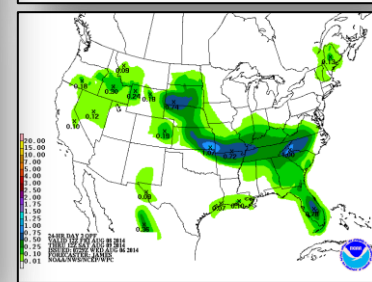
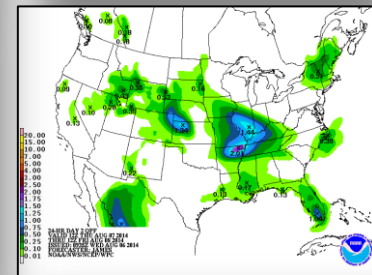
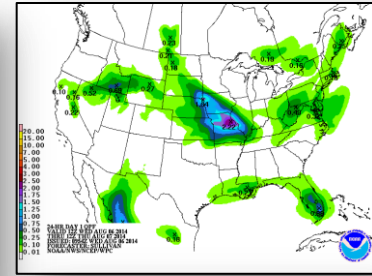
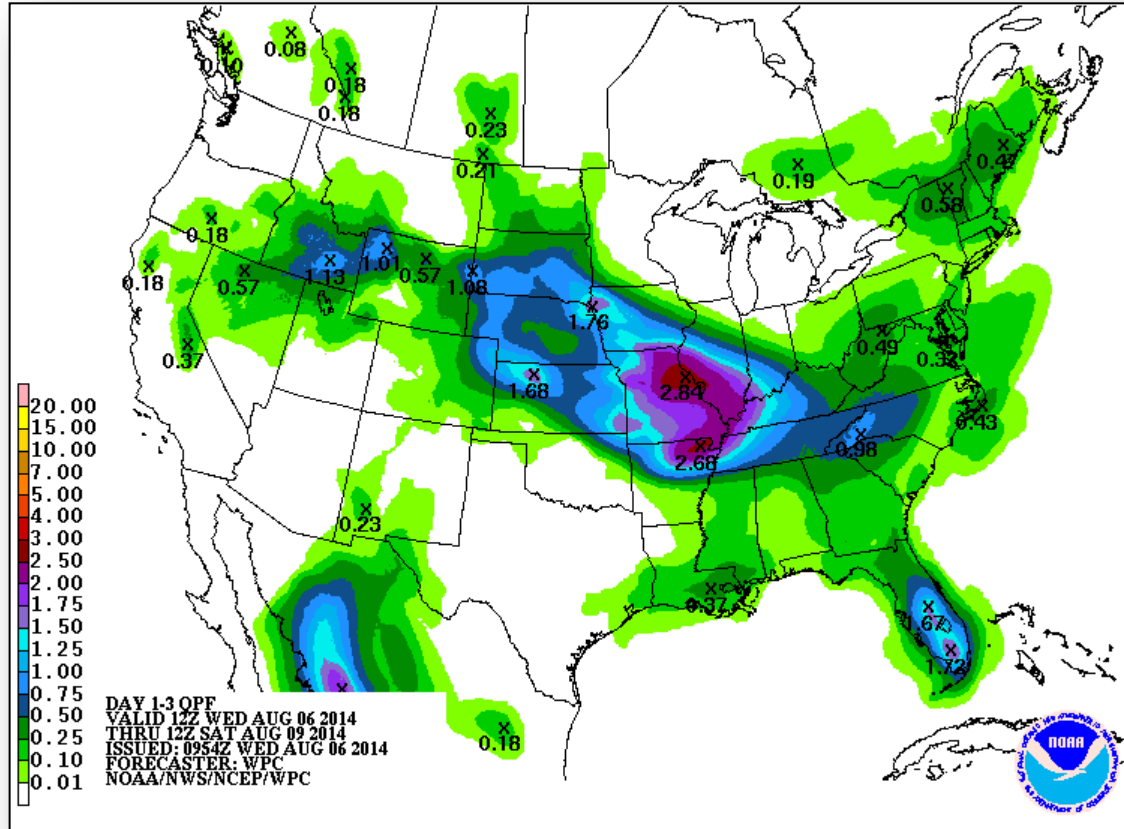


FEMA

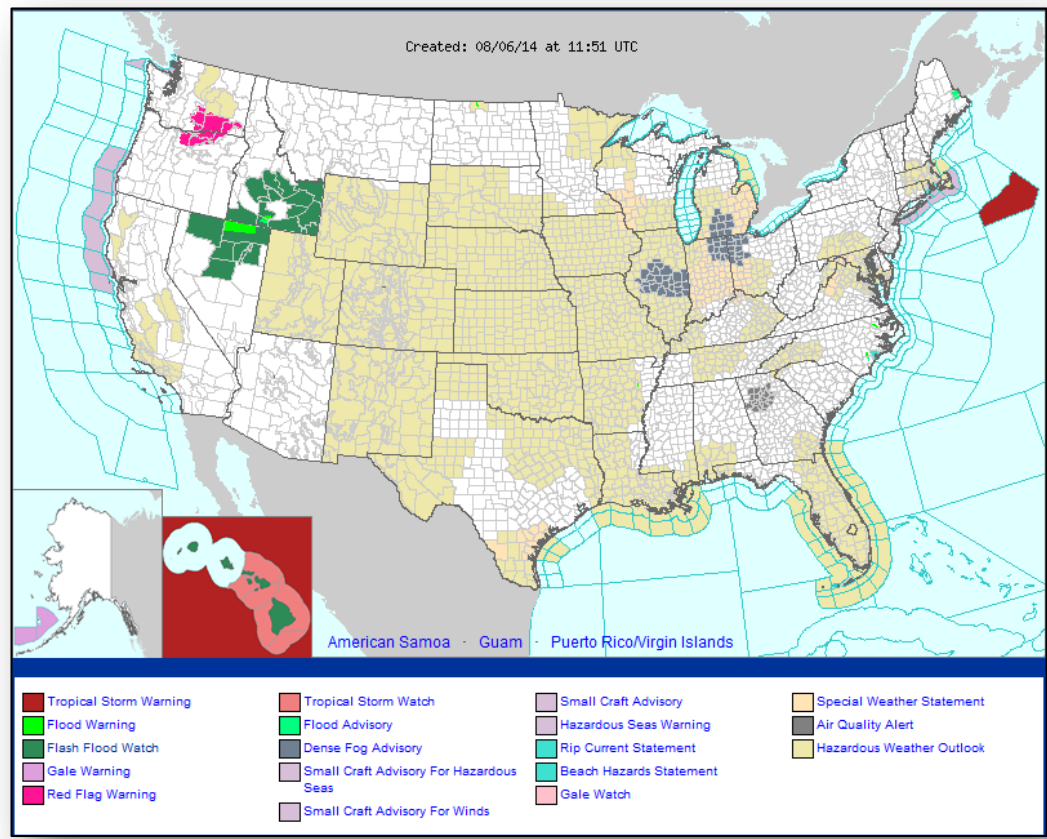


Weather Forecast for Wed, Aug 06, 2014, issued 3:15 AM EDT
DOC/NOAA/NWS/NCEP/Weather Prediction Center
Prepared by McCreynolds based on WPC, SPC and NHC forecasts

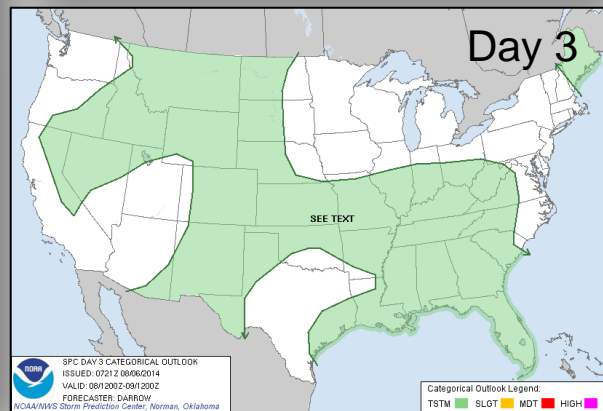
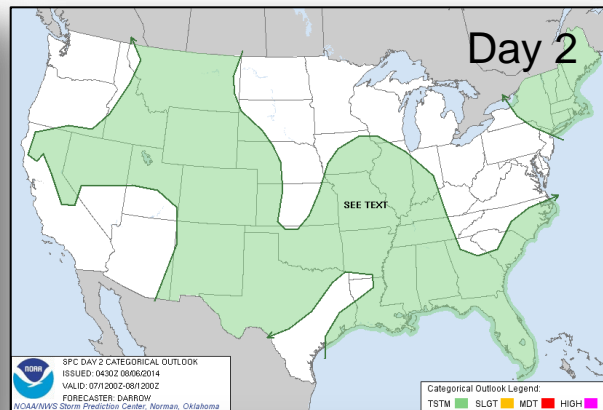
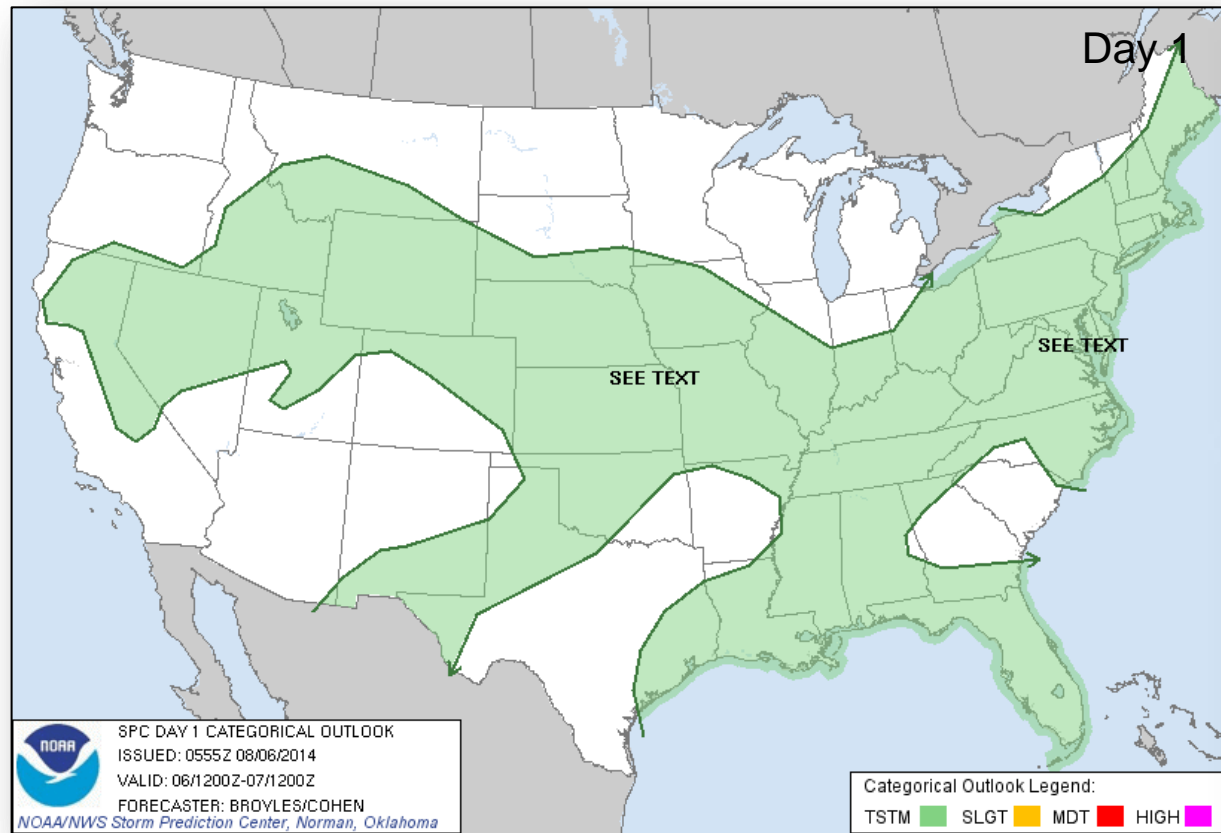
Precipitation Forecast – 3 Day



Active Watches/Warnings



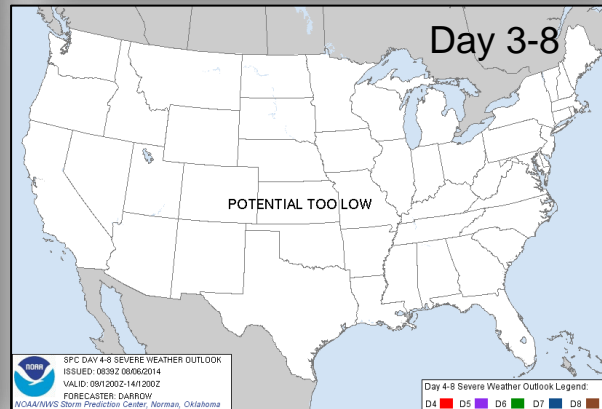
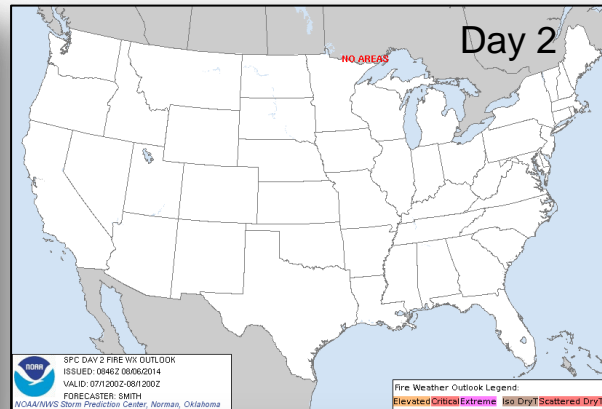
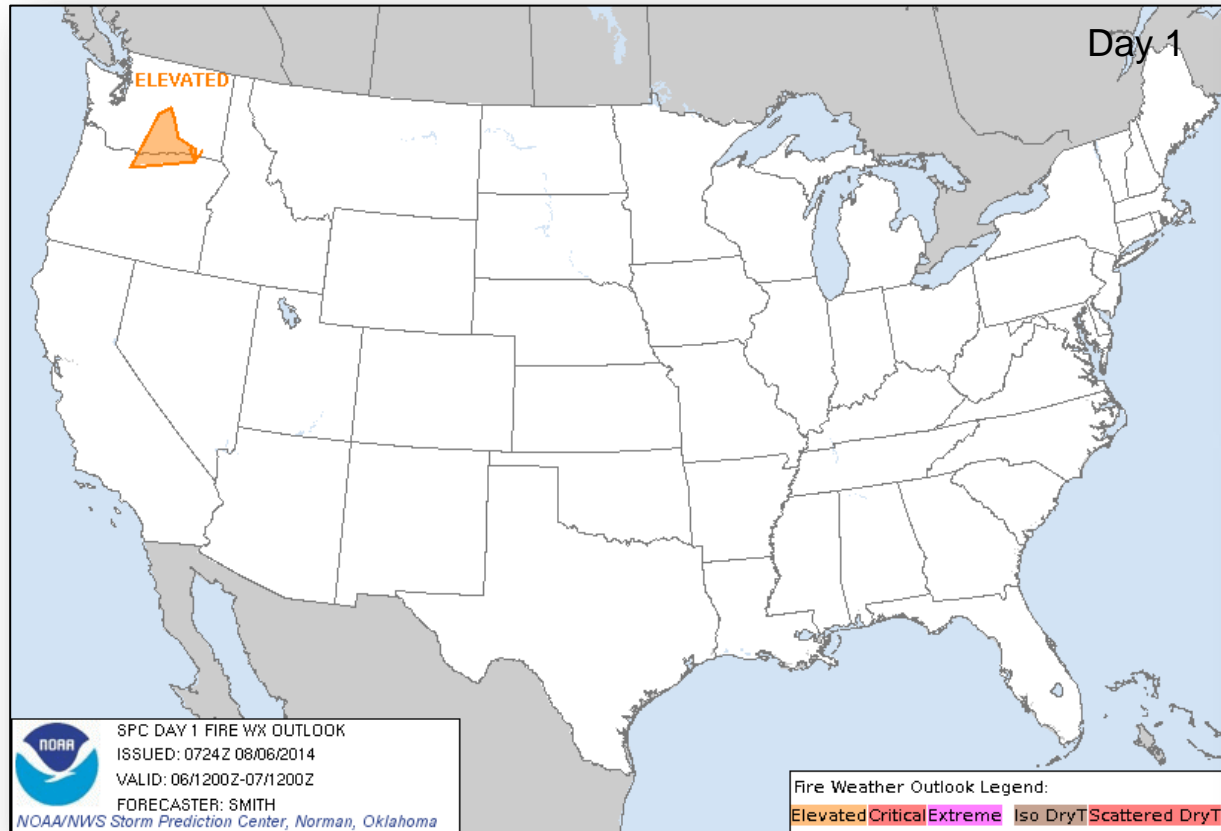
Convective Outlook, Days 1 – 3



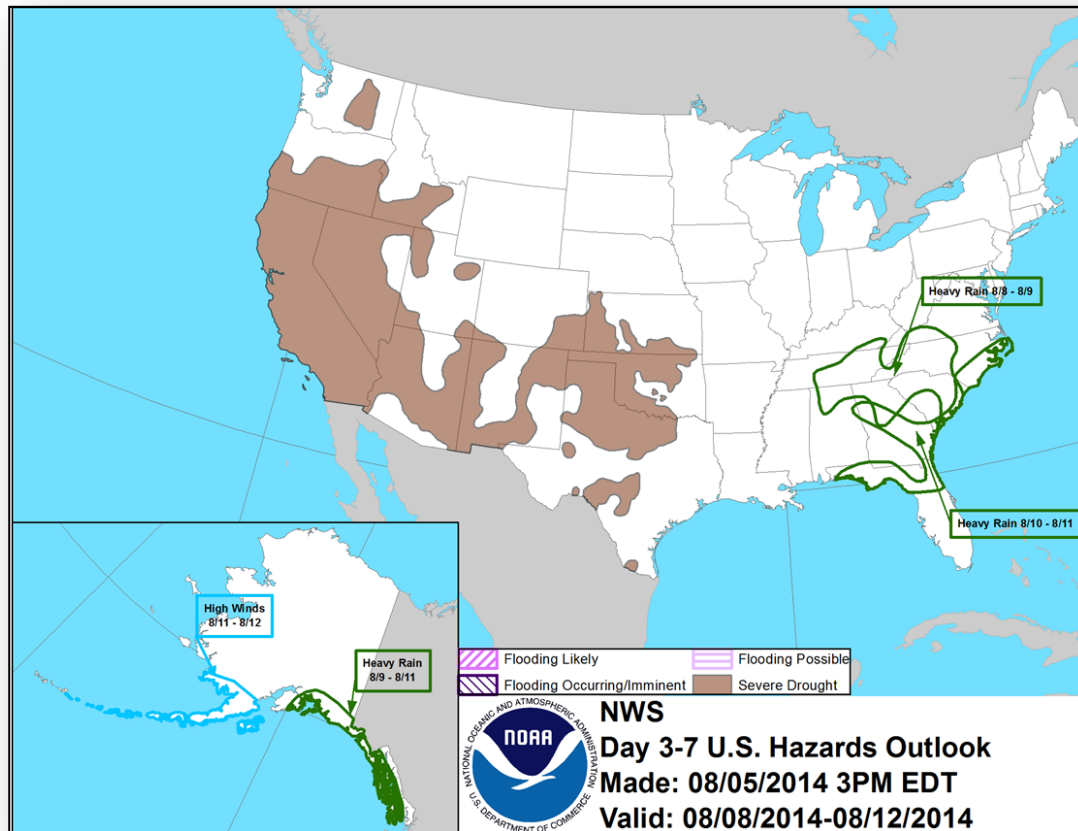
Fire Weather Outlook, Days 1 – 8



FEMA



Hazard Outlook: August 8 – 12

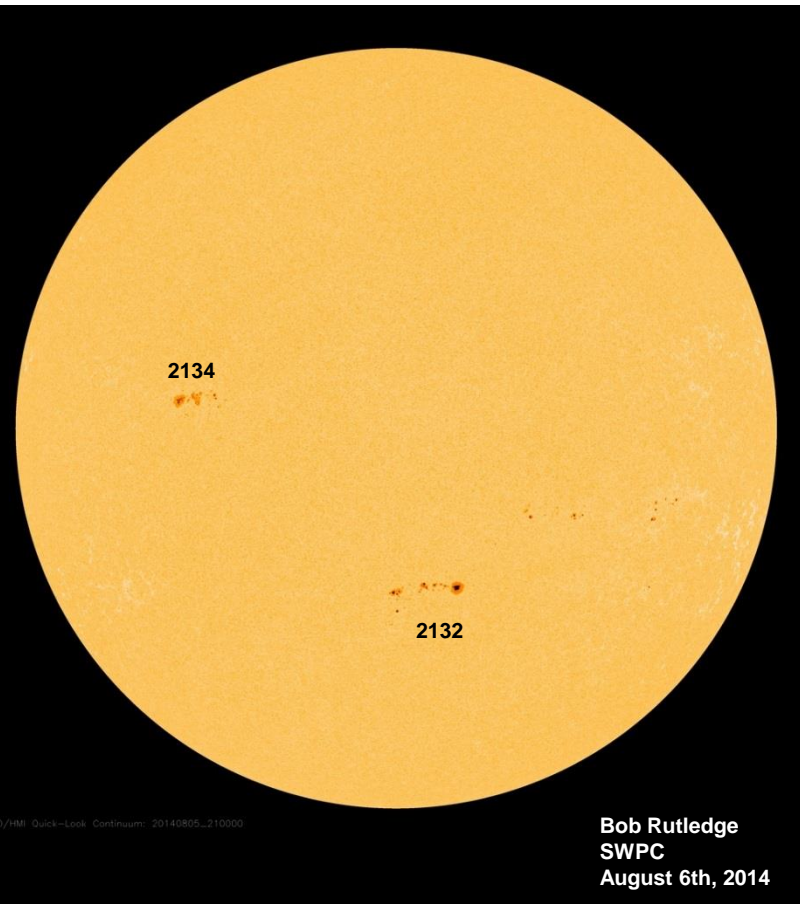
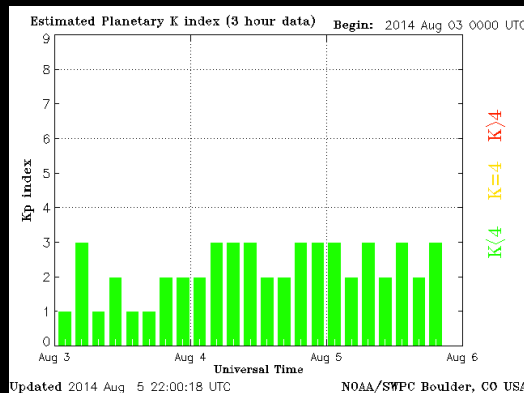
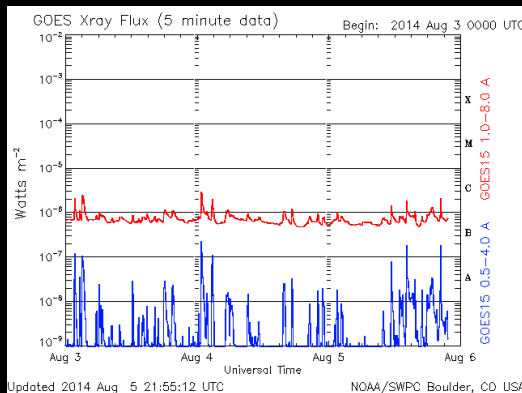


Space Weather Summary

Space Weather Summary August 6th, 2014	Past 48 Hours	Current
Solar Flare Radio Blackouts (R Scale)	None	None
Solar Radiation Storms (S Scale)	None	None
Geomagnetic Storms (G Scale)	None	None

Summary of Recent Activity/Outlook:

- Currently quiet across the R, S, and G scales
- Some potential for low to moderate activity from 2132 and 2134
- Threat of severe to extreme activity low at this time



FEMA Readiness – Deployable Teams/Assets



Deployable Teams/Assets									
Resource	Status	Total	Available		Partially Available	Not Available	Detailed Deployed Activated	Comments	Rating Criterion
FCO		39	12	31%	0	1	26		OFDC Readiness: FCO Green Yellow Red Type 1 3+ 2 1 Type 2 4+ 3 2 Type 3 4 3 2
FDRC		10	4	40%	0	0	6		FDRC 3 2 1
US&R		28	25	89%	2	1	0	<ul style="list-style-type: none">US&R System on Advisory (US/Africa Summit)NM-TF1 (Red for personnel shortages)CA-TF1 (Yellow for logistics & management)OH-TF1 (Partially Mission Capable VR-14)	<ul style="list-style-type: none">Green = Available/FMCYellow = Available/PMCRed = Out-of-ServiceBlue = Assigned/Deployed
National IMAT		3	2	66%	0	0	1	<ul style="list-style-type: none">IMAT West to DC (NRCC)IMAT East on alert (US/Africa Summit)	<ul style="list-style-type: none">Green: 3 availYellow: 1-2 availRed: 0 avail (<i>Individual N-IMAT red if 50% of Section Chiefs and/or Team Leader is unavailable for deployment.</i>)
Regional IMAT		13	5	38%	2	3	3	<u>Partially Mission Capable (PMC):</u> <ul style="list-style-type: none">VI (Team 1), III <u>Not Mission Capable (NMC):</u> <ul style="list-style-type: none">Region V, VI (Team 2), VII, <u>Deployed</u> <ul style="list-style-type: none">Region III to DC (US/Africa Summit)Region X to WARegion VIII to CO (DR-4186)Region IX (Team 1) to HI (Iselle)	<ul style="list-style-type: none">Green: 7 or more availYellow: 4 - 6 teams availableRed: > 8 teams deployed/unavailable <i>R-IMAT also red if TL Ops/Log Chief is unavailable and has no qualified replacement.</i>
MCOV		55	51	93%	0	4	0		<ul style="list-style-type: none">Green = 80 – 100% availYellow = 60 – 79% availRed = 59% or below availReadiness remains 95%

FEMA Readiness – National/Regional Teams



National/Regional Teams									
Resource	Status	Total	Available		Partially Available	Not Available	Deployed/ Activated	Comments	Rating Criterion
NWC		5	5	100%	0	0	24/7	Enhanced Watch (dayshift) UC UCG/US-Africa Summit/ Iselle	<ul style="list-style-type: none">• Green = FMC• Yellow = PMC• Red = NMC
NRCC		2	344	89%	0	44	Not Activated		
HLT		1	N/A	N/A	0	1	Activated	Activated	
DEST							Not Activated		
RRCCs		10	10	100%	0	0	0	Region V: Level III	
RWCs/MOCs		10	10	100%	0	0	24/7	Region III & IX: Enhanced Watch	



FEMA

FEMA's mission is to support our citizens and first responders to ensure that as a nation we work together to build, sustain, and improve our capability to prepare for, protect against, respond to, recover from, and mitigate all hazards.