



FEMA

Daily Operations Briefing

Sunday, August 10, 2014

8:30 a.m. EDT

Significant Activity: August 9 – 10



Significant Events:

- Julio – Central Pacific
- Wildfire Activity – Northern CA, OR, WA & ID

Tropical Activity:

- Atlantic – Disturbance 1 (Low; 10%)
- Eastern Pacific – Disturbance 1 (Low; 0%)
- Central Pacific – Post -Tropical Cyclone Iselle (Low; 0%); Hurricane Julio; Disturbance 3 (Low; 0%)

Significant Weather:

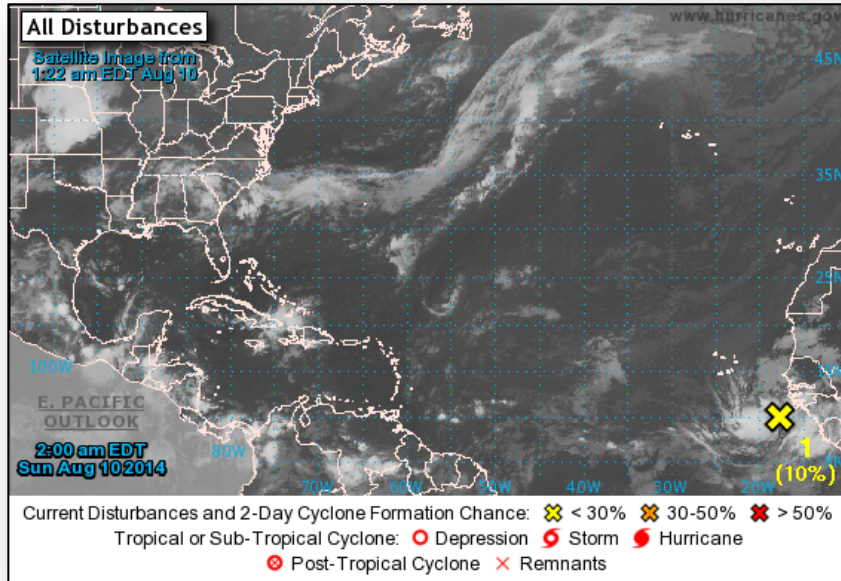
- Rain and thunderstorms – Central Plains to Northeast
- Space Weather – Past 24 hours / Next 24 hours: No significant activity
- Elevated Fire Weather – None; Red Flag Warnings – OR & CA

FEMA Readiness:

- Region IX RWC – Will return to Steady State at 9:00 a.m. EDT, on Aug 10
- FEMA HQ NWC – Enhanced Watch for UCG

Disaster Activity: None

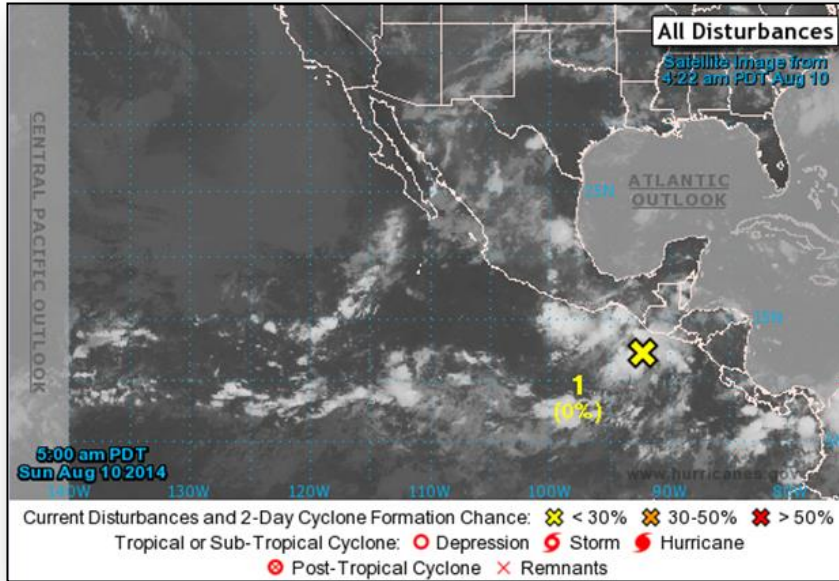
2-Day Tropical Outlook – Atlantic



Disturbance 1 (as of 8:00 am EDT)

- Located midway between the west coast of Africa and the Cape Verde Islands
- Producing a large area of cloudiness and disorganized thunderstorms
- Moving W at 15-20 mph
- Any development of system is expected to be slow to occur next several days
 - Next 48 hours: Low (10%)
 - Next 5 days: Medium (30%)

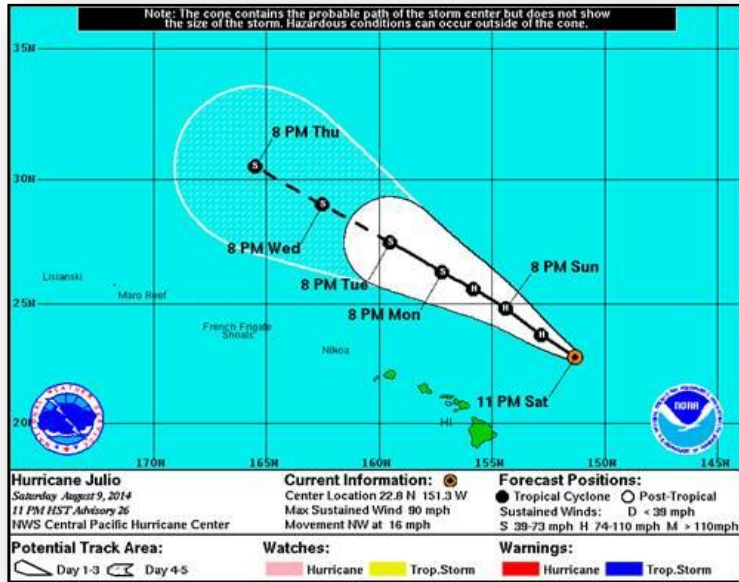
2-Day Tropical Outlook – Eastern Pacific



Disturbance 1 (as of 8:00 am EDT)

- Disorganized cloudiness and thunderstorms just offshore the coasts of Guatemala and southern Mexico
- Strong upper-level winds are forecast to limit significant development
- Moving WNW at 10-15 mph
- Environmental conditions are conducive for some development
 - Next 48 hours: Low (near 0%)
 - Next 5 days: Medium (50%)

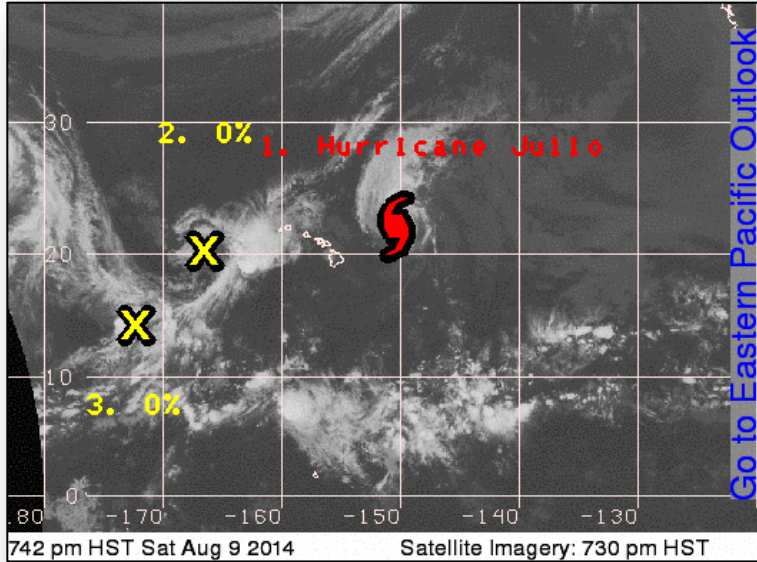
Hurricane Julio – Central Pacific



Hurricane Julio (Category 1) (as of 5:00 a.m. EDT)

- Located 325 miles NE of Hilo, Hawaii
- Moving NW at 16 mph
- General NW motion is expected to continue through Monday evening
- On this forecast track, Julio will be NW then N of the main Hawaiian islands during the next two days
- Maximum sustained winds decreased to 90 mph, with higher gusts
- Julio may weaken to a strong tropical storm by late Monday
- Hurricane-force winds extend outward up to 35 miles from center
- Tropical storm-force winds extend outward up to 160 miles
- There are no coastal watches or warnings in effect

Tropical Outlook – Central Pacific



Disturbance 2 (as of 2:00 a.m. EDT)

- Post tropical Iselle located 450 miles WSW of Lihue, HI
- Moving W at 20 mph
- Conditions unfavorable for redevelopment
- Formation chance through 48 hours: Low (0%)

Disturbance 3 (as of 2:00 a.m. EDT)

- Located 1,050 miles SW of Honolulu, HI
- Conditions unfavorable for redevelopment
- Formation chance through 48 hours: Low (0%)

Wildfire Summary



Fire Name (County)	FMAG #	Acres burned	% Contained Est. Containment date	Evacuations (Residents)	Structures Threatened	Structures Destroyed	Fatalities / Injuries
Washington (3)							
Chiwaukum Complex (Chelan County)	FEMA-5061-FM FEMA-5072-FM	13,849	35%	Mandatory	91 homes	4 other	0 / 5 (+5)
Snag Canyon (Kittitas County)	FEMA-5071-FM August 3, 2014	8,842	25%	Mandatory	249 homes	8 homes 11 other	0 / 0
Devil's Elbow Complex (Colville Indian Reservation)	None	13,941 (+1746)	4%(+2)	Mandatory	150 homes 90 other	2 other	0 / 2
Idaho (1)							
Big Cougar Fire (Nez Perce County)	None	55,000 (+7,000)	40%(+20)	Mandatory	100 homes 100 other	9 other	0 / 2
California (1)							
Oregon Gulch Fire (Siskiyou County) (FINAL)	FEMA-5068-FM August 2, 2014	9,464	58%(+8)	Lifted	92 homes (-7)	6 homes 9 other	0 / 0
Oregon (2)							
Beaver Complex (Jackson & Klamath counties) (FINAL)	FEMA-5066-FM August 1, 2014	35,284 (+36)	64%(+6)	Voluntary	270 homes 50 other	6 homes 9 other	0 / 9
Rowena Fire (Hood River County) (FINAL)	FEMA-5073-FM August 6, 2014	3,673 (+301)	65%(+10)	Lifted	740 homes 250 other	1 home 5 other	0 / 0

Disaster Requests & Declarations



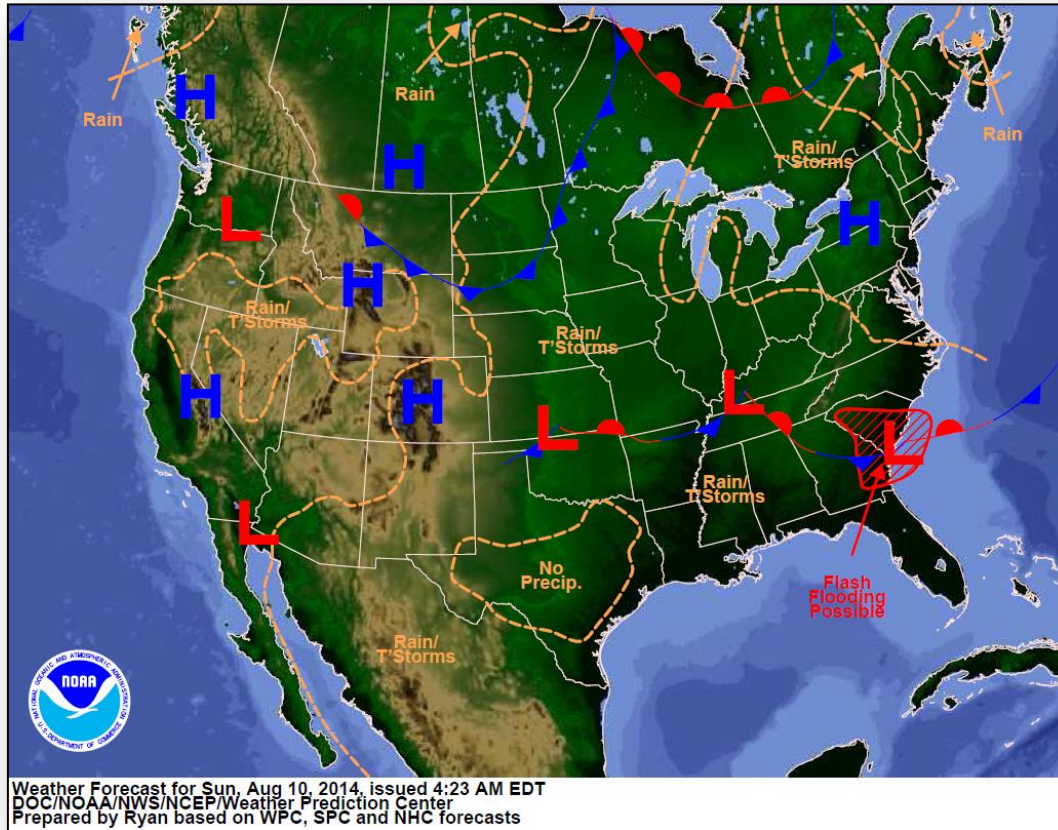
Declaration Requests in Process		Requests APPROVED (since last report)	Requests DENIED (since last report)
3	Date Requested	0	0
TN – DR Severe Storms, Tornadoes, Straight-line Winds, and Flooding	August 4, 2014		
WA – DR Wildfires	August 6, 2014		
ND – DR Severe Storms and Flooding	August 8, 2014		

Joint Preliminary Damage Assessments

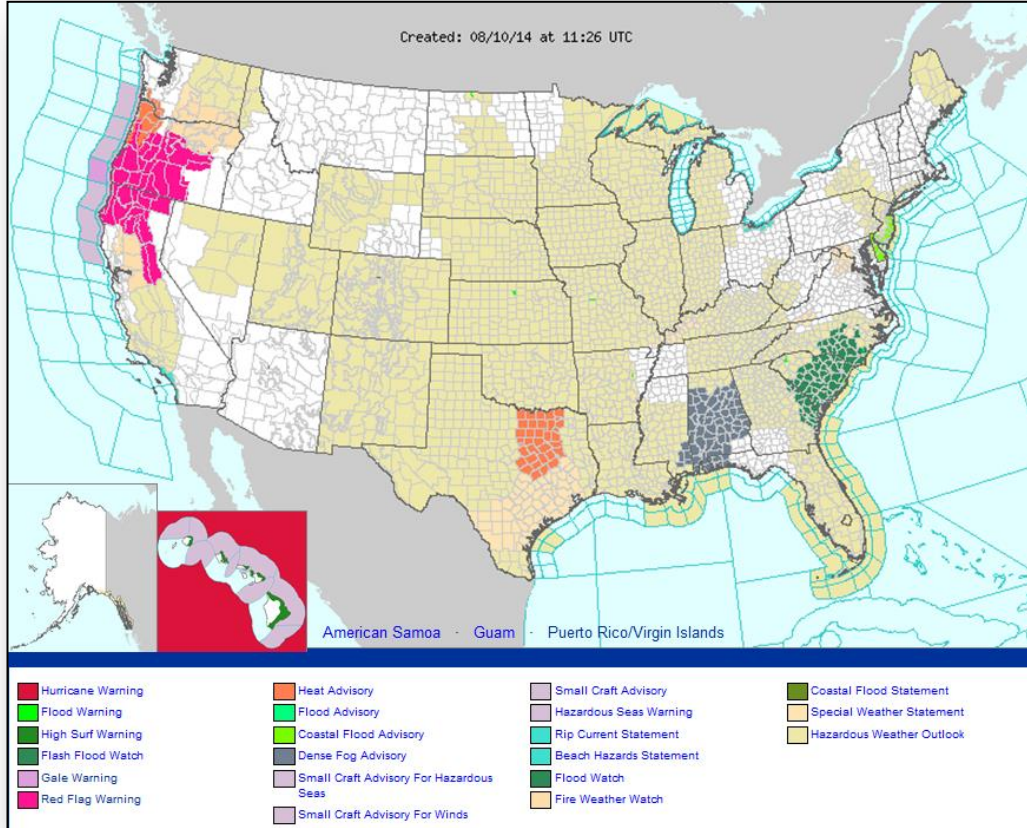


Region	State / Location	Event	IA/PA	Number of Counties		Start – End
				Requested	Complete	
I	VT	Flooding July 28, 2014	PA	2	2	8/5 – 8/7
II	Puerto Rico	Tropical Storm Bertha August, 2014	PA	7	0	8/6 – TBD
VIII	Utah	Severe storms & Mudslides August 4, 2014	IA	1	0	TBD
			PA	1	0	TBD
IX	Guam	Typhoon Halong July 2014	PA	2	0	8/7 – TBD
IX	American Samoa	Flooding & Mudslides July 29, 2014 & continuing	PA	1	0	TBD

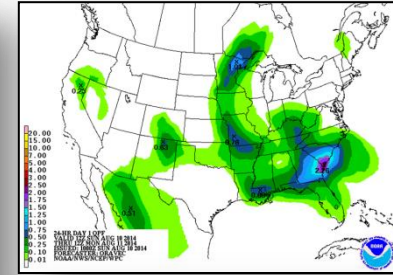
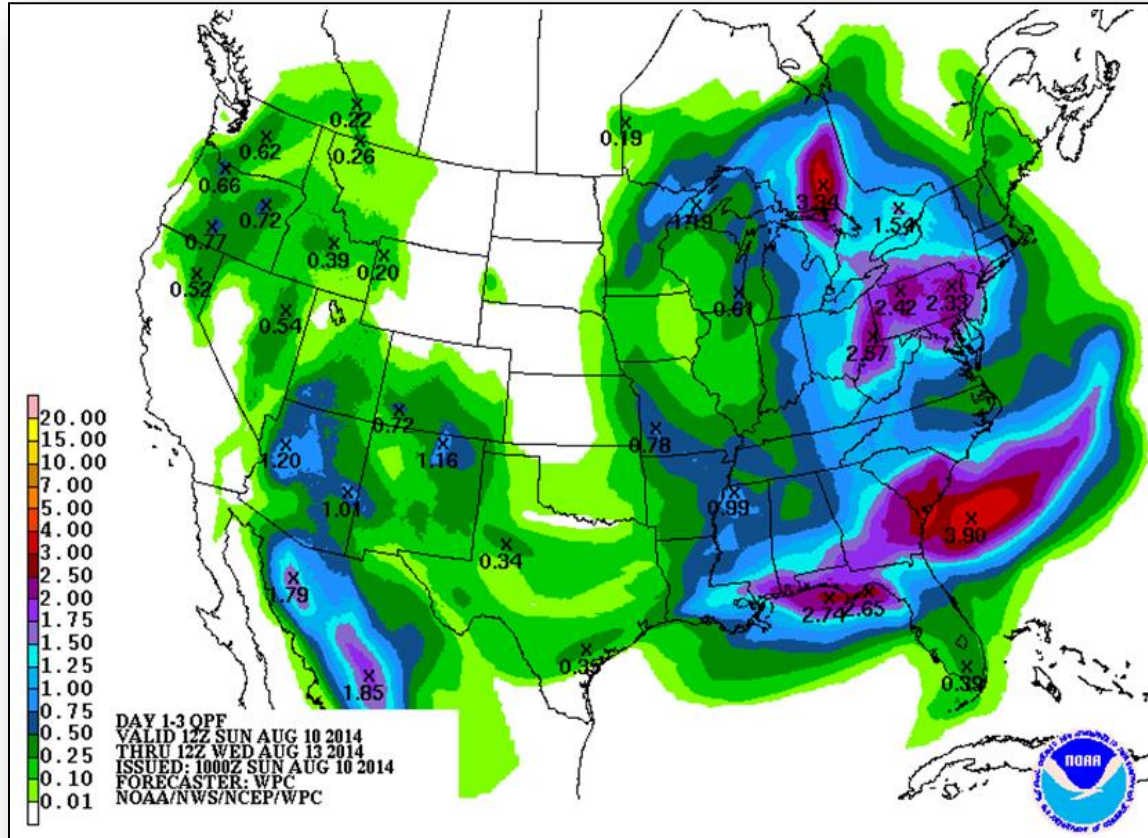
National Weather Forecast



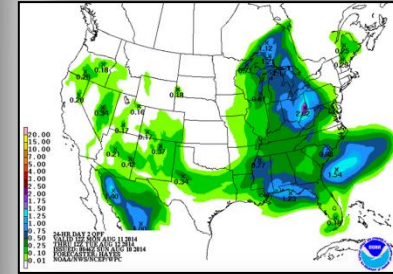
Active Watches/Warnings



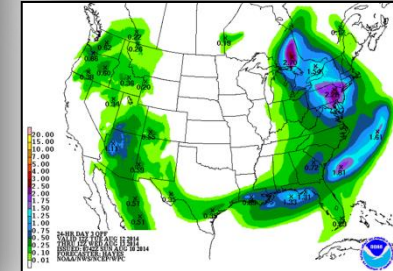
Precipitation Forecast – 3 Day



Day 1

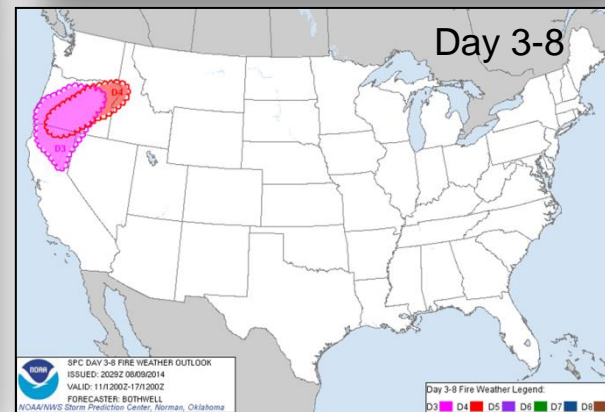
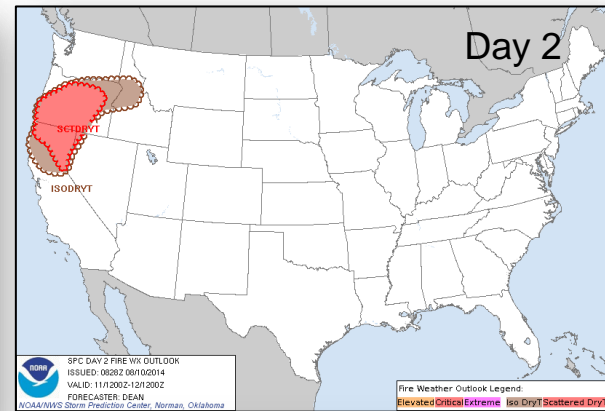
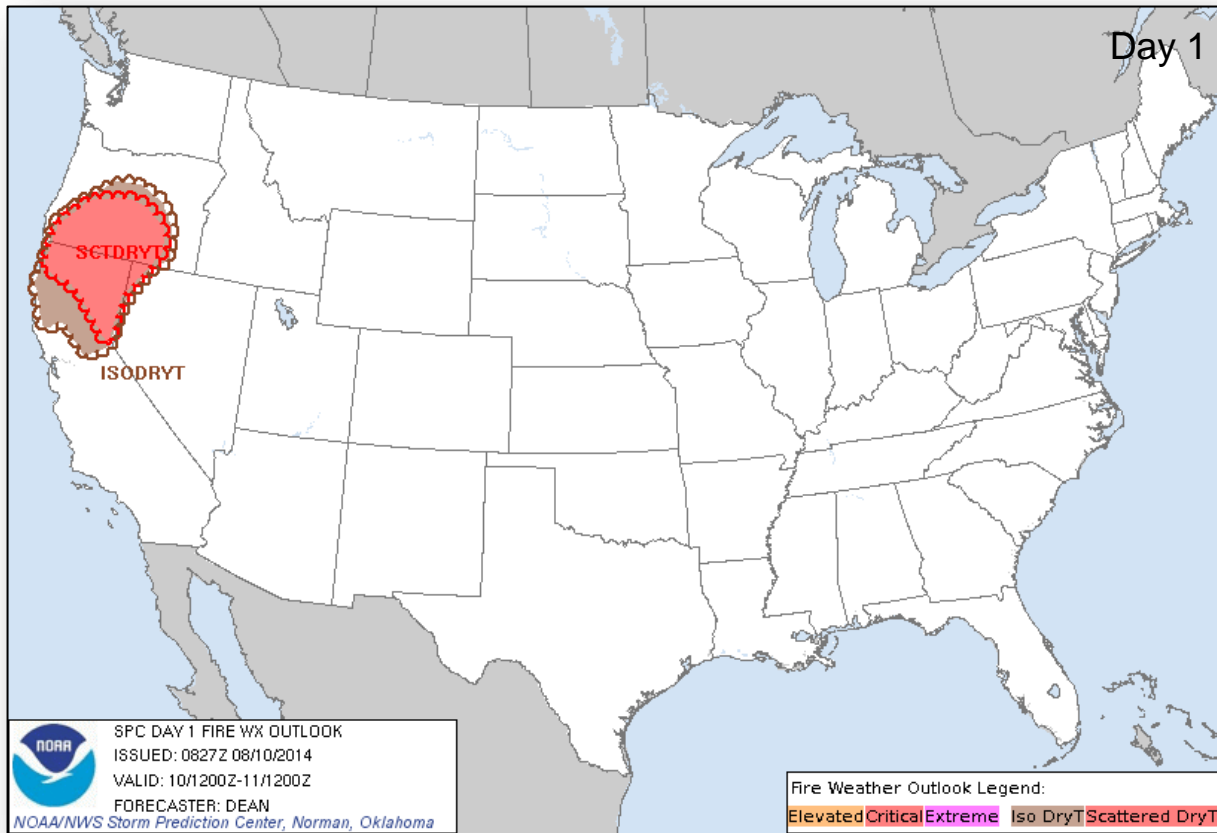


Day 2



Day 3

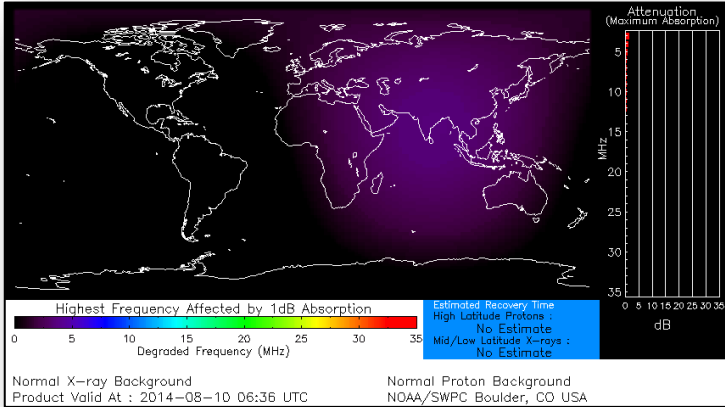
Fire Weather Outlook, Days 1 – 8



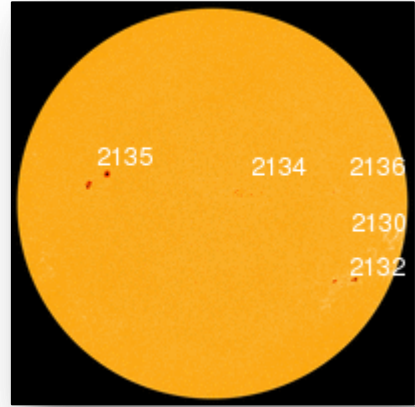
Space Weather

NOAA Scales Activity (Range: 1/minor to 5/extreme)	Past 24 Hours	Current	Next 24 Hours
Space Weather Activity:	None	None	None
• Geomagnetic Storms	None	None	None
• Solar Radiation Storms	None	None	None
• Radio Blackouts	None	None	None

HF Communication Impact



Sunspot Activity



FEMA Readiness – Deployable Teams/Assets



Deployable Teams/Assets									
Resource	Status	Total	Available		Partially Available	Not Available	Detailed Deployed Activated	Comments	Rating Criterion
FCO		39	15	38%	0	1	23		OFDC Readiness: FCO Green Yellow Red Type 1 3+ 2 1 Type 2 4+ 3 2 Type 3 4 3 2 FDRC 3 2 1
FDRC		10	5	50%	0	0	5		
US&R		28	26	93%	1	1	0	<ul style="list-style-type: none"> NM-TF1 (Red for personnel shortages) CA-TF1 (Yellow for logistics & management) 	<ul style="list-style-type: none"> Green = Available/FMC Yellow = Available/PMC Red = Out-of-Service Blue = Assigned/Deployed
National IMAT		3	2	67%	0	0	1	<ul style="list-style-type: none"> IMAT West to DC (NRCC) 	<ul style="list-style-type: none"> Green: 3 avail Yellow: 1-2 avail Red: 0 avail (<i>Individual N-IMAT red if 50% of Section Chiefs and/or Team Leader is unavailable for deployment.</i>)
Regional IMAT		13	4	31%	3	3	3	<u>Partially Mission Capable (PMC):</u> <ul style="list-style-type: none"> Region II, III, VI (Team 1) <u>Not Mission Capable (NMC):</u> <ul style="list-style-type: none"> Region V, VI (Team 2), VII <u>Deployed</u> <ul style="list-style-type: none"> Region X to WA Region VIII to CO (DR-4186) Region IX (Team 1) to HI (Iselle & Julio) 	<ul style="list-style-type: none"> Green: 7 or more avail Yellow: 4 - 6 teams available Red: > 8 teams deployed/unavailable <p><i>R-IMAT also red if TL Ops/Log Chief is unavailable and has no qualified replacement.</i></p>
MCOV		55	50	91%	0	5	0		<ul style="list-style-type: none"> Green = 80 – 100% avail Yellow = 60 – 79% avail Red = 59% or below avail Readiness remains 95%

FEMA Readiness – National/Regional Teams



National/Regional Teams

Resource	Status	Total	Available		Partially Available	Not Available	Deployed/ Activated	Comments	Rating Criterion
NWC	Green	5	5	100%	0	0	24/7	Enhanced Watch (UC UCG)	<ul style="list-style-type: none"> • Green = FMC • Yellow = PMC • Red = NMC
NRCC	Green	2	344	89%	0	44	Not Activated		
HLT	Green	1	N/A	N/A	0	1	Activated	Activated	
DEST	Green						Not Activated		
RRCCs	Green	10	10	100%	0	0	0		
RWCs/MOCs	Green	10	10	100%	0	0	24/7	R-IX RWC: Will return to Steady State at 9:00 am EDT Aug 10	



FEMA

FEMA's mission is to support our citizens and first responders to ensure that as a nation we work together to build, sustain, and improve our capability to prepare for, protect against, respond to, recover from, and mitigate all hazards.