



FEMA

Daily Operations Briefing

Friday, August 15, 2014

8:30 a.m. EDT

Significant Activity: August 14 – 15



Significant Events:

- Wildfire Activity – Northern CA & WA

Tropical Activity:

- Atlantic – Disturbance 1 (Low; 0%)
- Eastern Pacific – Tropical Storm Karina
- Central Pacific – Tropical Storm Julio; Disturbance 2 (Medium; 50%)

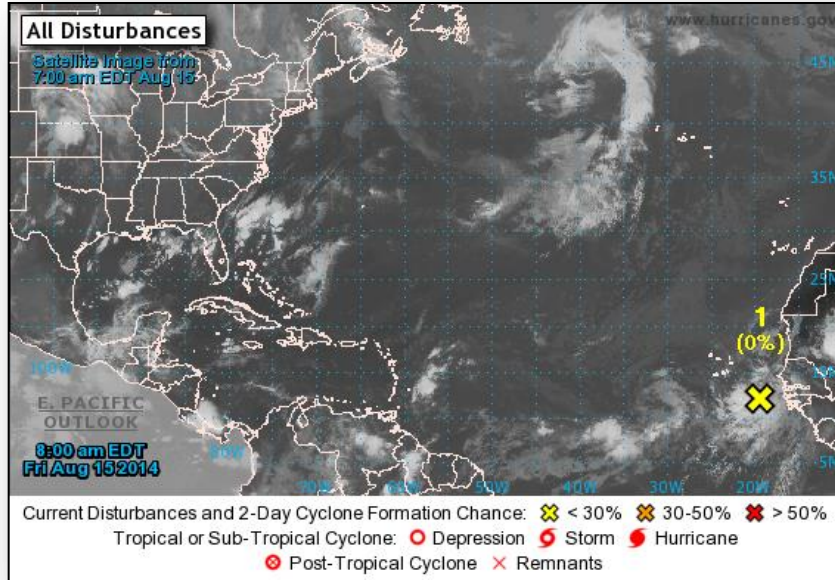
Significant Weather:

- Severe thunderstorms possible – Northern Rockies
- Flash flooding possible – Northern Intermountain to Northern/Central Plains; Southwest
- Critical Fire Weather: None
- Red Flag Warnings: None
- Space Weather – Past 24 hours / Next 24 hours: No significant activity

FEMA Readiness: No significant changes

Declaration Activity: No activity

2-Day Tropical Outlook – Atlantic



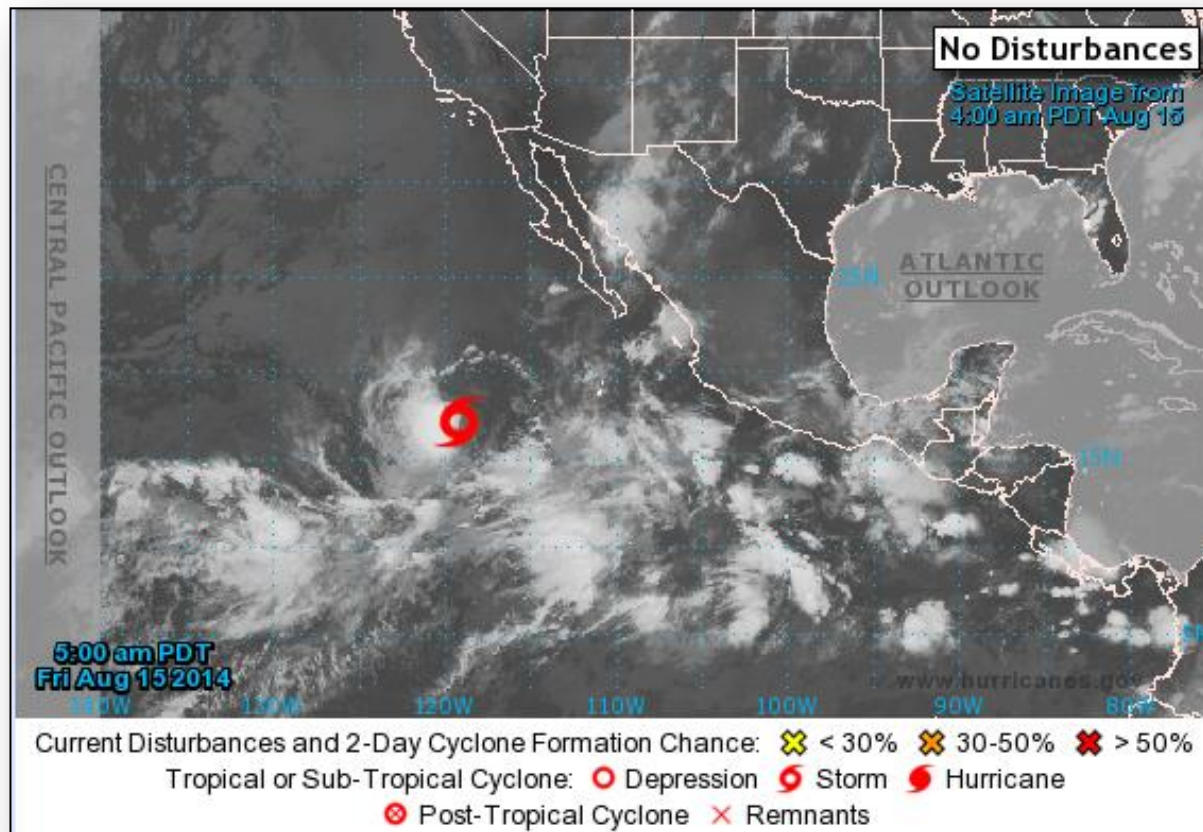
Disturbance 1 (as of 8:00 am EDT)

- Located just off the west coast of Africa
- Area of low pressure associated with a tropical wave accompanied by disturbed weather
- Forecast to move WNW
- Environment unfavorable for significant development
- Formation chance:
 - Next 48 hours: Low (0%)
 - Next 5 days: Low (20%)

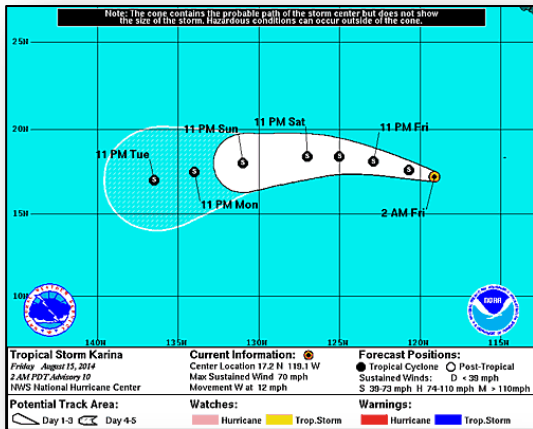
2-Day Tropical Outlook – Eastern Pacific



FEMA

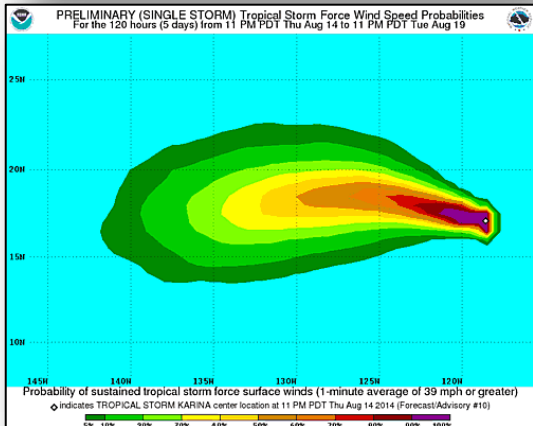


2-Day Tropical Outlook – Eastern Pacific

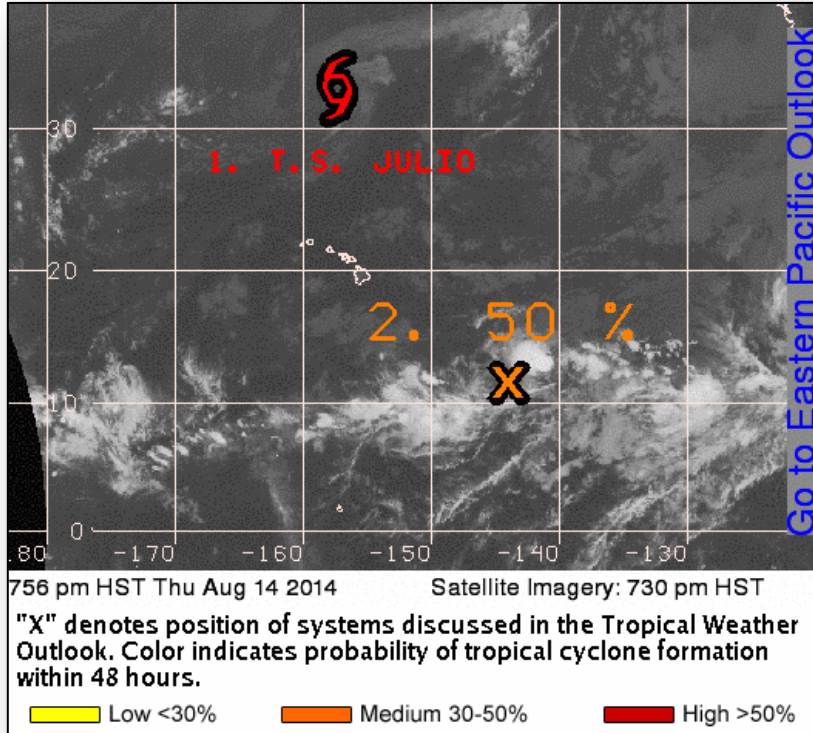


Tropical Storm Karina (as of 5:00 am EDT)

- Located 715 miles SW of southern tip of Baja California, Mexico
- Moving W at 12 mph
- Max sustained winds 70 mph with higher gusts
- Additional Weakening forecast next 48 hours
- Tropical storm force winds extend 60 miles
- No hazards affecting land



2-Day Tropical Outlook – Central Pacific



Tropical Storm Julio (as of 5:00 a.m. EDT)

- Located 765 miles N of Honolulu, Hawaii
- Moving NNE at 5 mph
- Maximum sustained winds 45 mph
- Weakening to tropical depression this morning and remnant low by tonight
- Tropical storm force winds extend 105 miles

Disturbance 2 (as of 8:00 a.m. EDT)

- Located 1100 miles ESE Hilo Hawaii
- Producing consistent showers and thunderstorms
- Moving slowly WNW
- Conditions may support gradual development next 2 days
- Formation chance:
 - Next 48 hours: Medium (50%)

Wildfire Summary



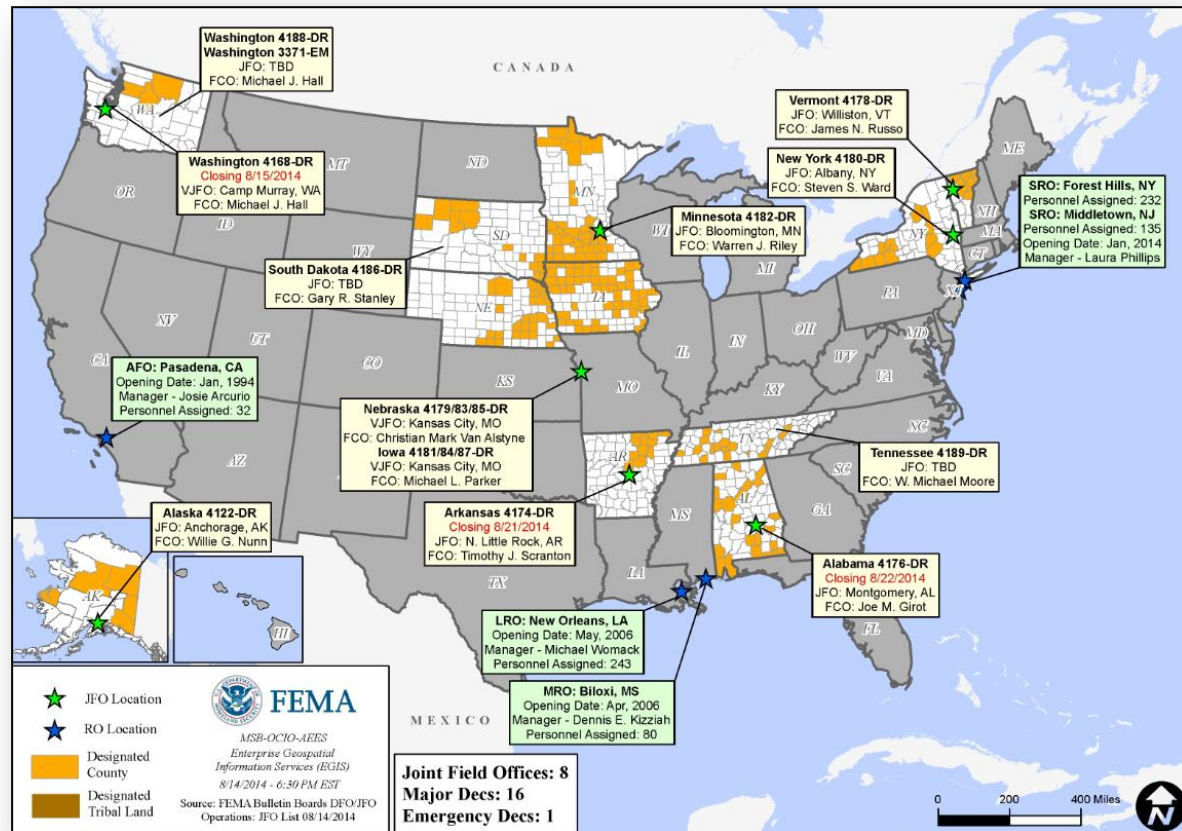
Fire Name (County)	FMAG #	Acres Burned	% Contained Est. Containment date	Evacuations (Residents)	Structures Threatened	Structures Destroyed	Fatalities / Injuries
Washington (1)							
Devil's Elbow Complex (Colville Indian Reservation)	None	26,349 (+5,601)	18% (+8)	Mandatory	41 (-109)Homes 20(-90) other	2 other	0 / 10
California (2)							
July Complex Fire (Siskiyou County)	None	25,632 (+1,160)	12% (+12)	Mandatory	142 (+2) homes 72 other	3 other	0 / 0
Lodge Complex Fire (Mendocino County) (Final)	None	12,336 (+1036)	60% (+5)	None	16 homes	None	0 / 12

Disaster Requests & Declarations



Declaration Requests in Process		Requests APPROVED (since last report)	Requests DENIED (since last report)
1	Date Requested	0	0
ND – DR Severe Storms and Flooding	August 8, 2014		

Open Field Offices as of August 15, 2014

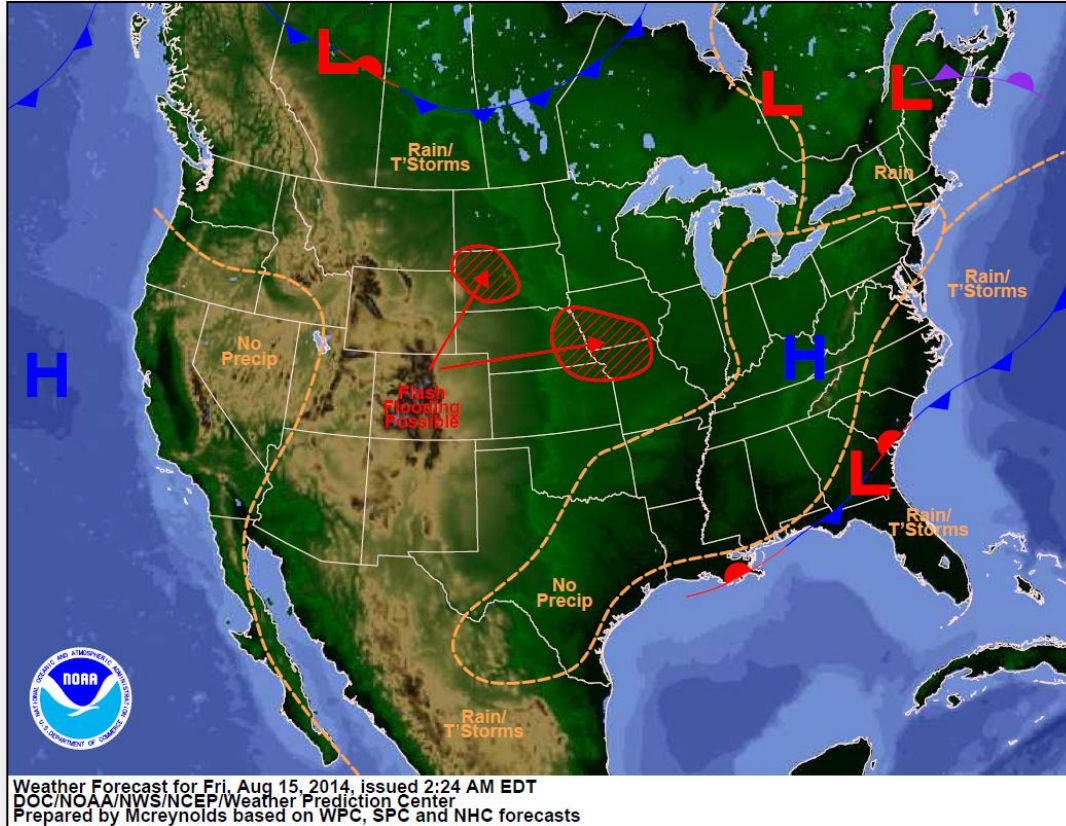


Joint Preliminary Damage Assessments

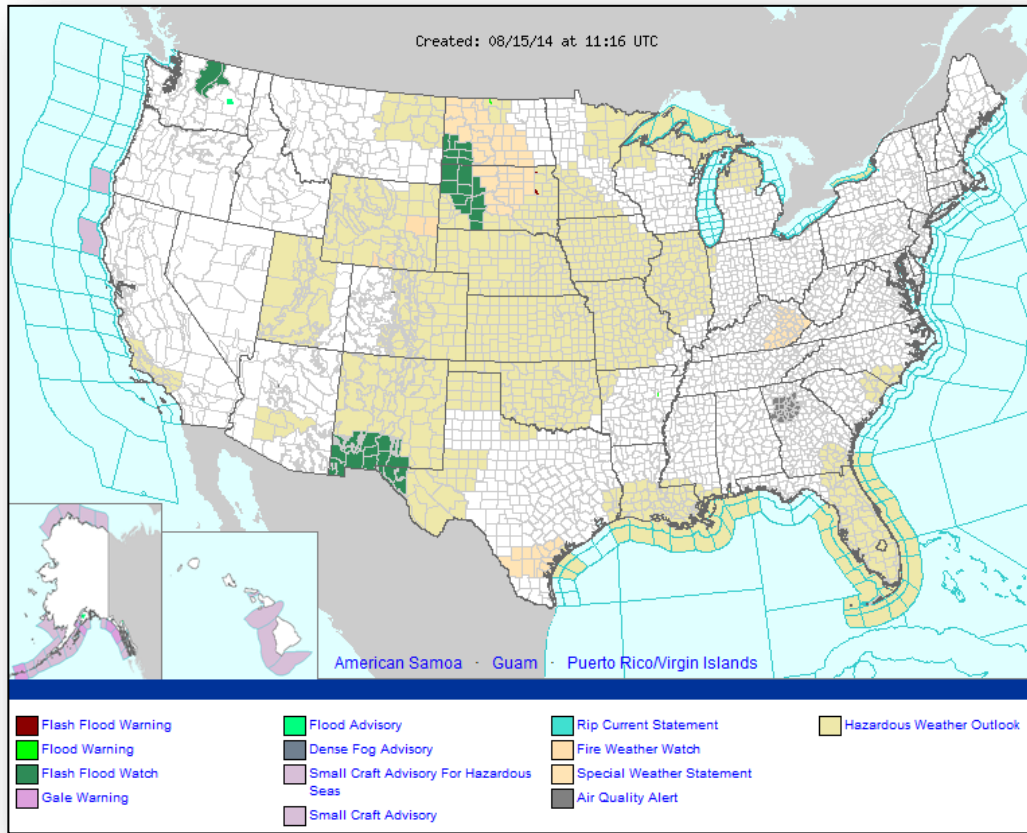


Region	State / Location	Event	IA/PA	Number of Counties		Start – End
				Requested	Complete	
II	Puerto Rico	Tropical Storm Bertha August 2014	PA	7	0	8/6 – TBD
VIII	Utah	Severe storm & Mudslide August 4, 2014	IA	1	0	8/14 – TBD
			PA	1	1	8/13 – 8/14
IX	Guam	Typhoon Halong July 2014	PA	2	0	8/8 – TBD
IX	Hawaii	Hurricane Iselle August 2014	IA	1	0	8/15 – TBD

National Weather Forecast



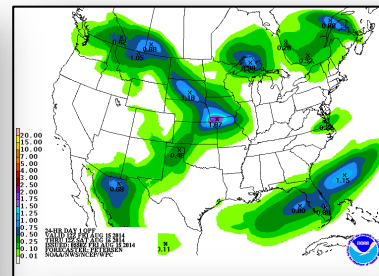
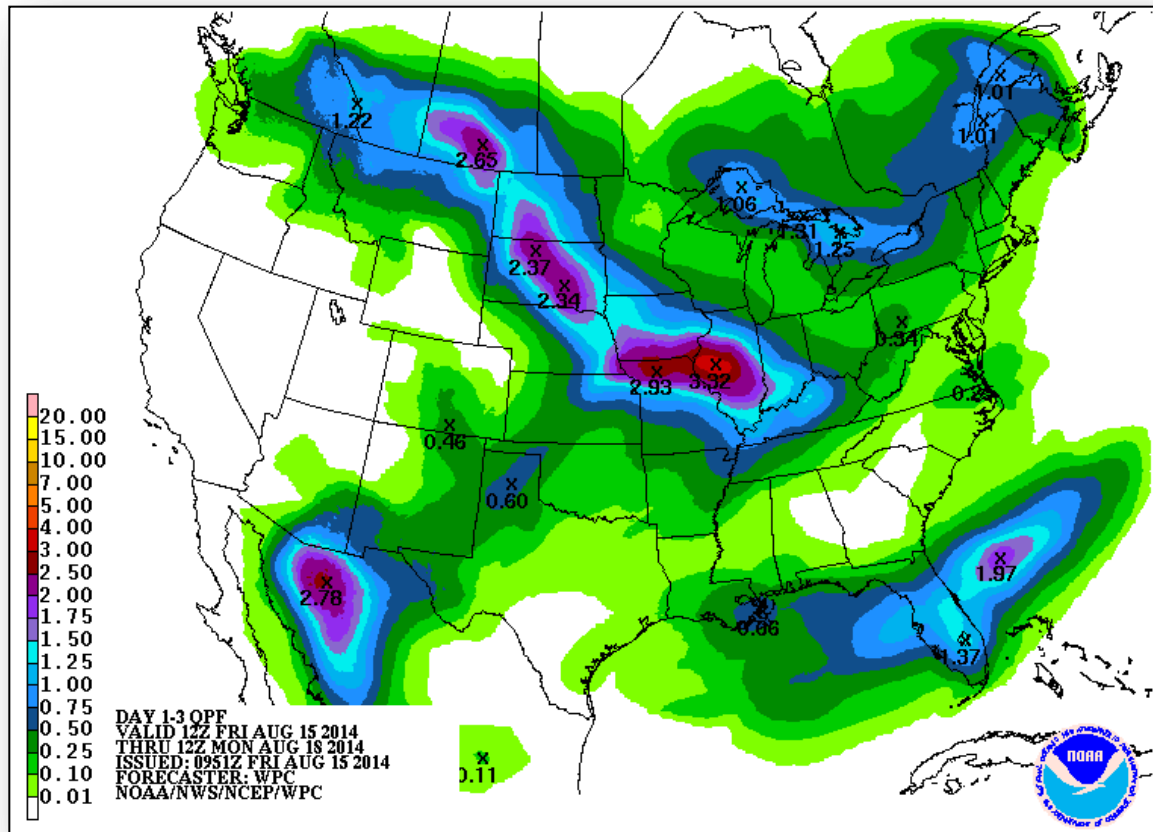
Active Watches/Warnings



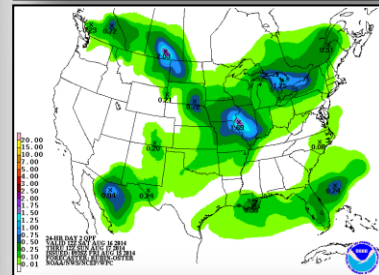
Precipitation Forecast – 3 Day



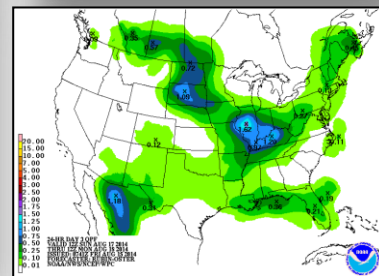
FEMA



Day 1



Day 2



Day 3

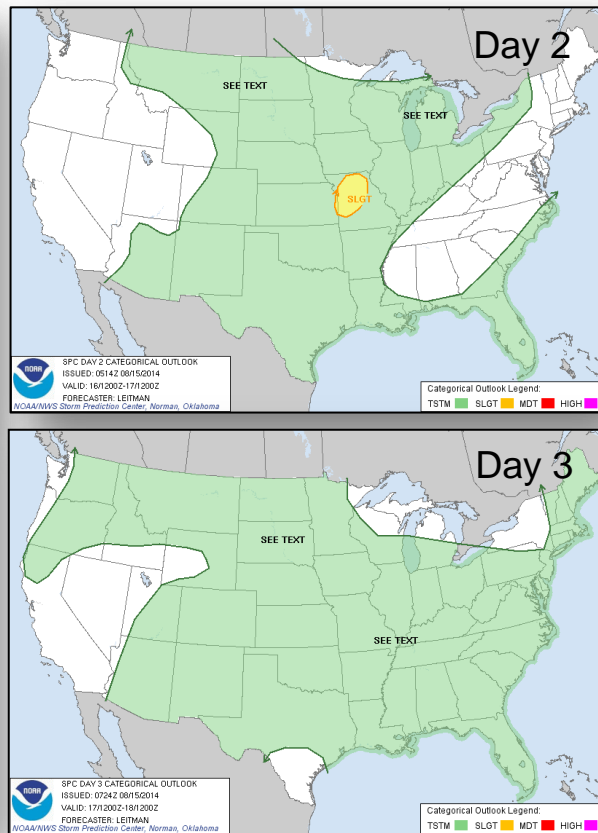
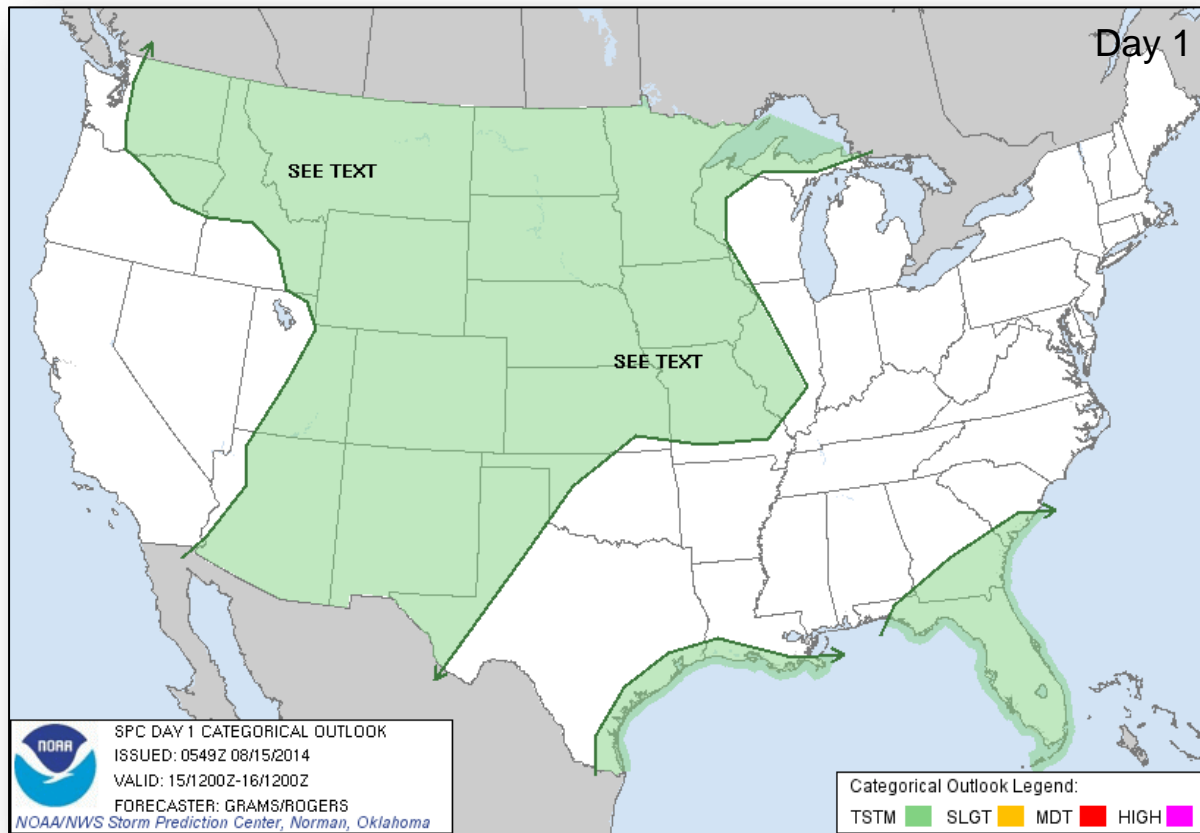
River Forecast



Convective Outlook, Days 1 – 3



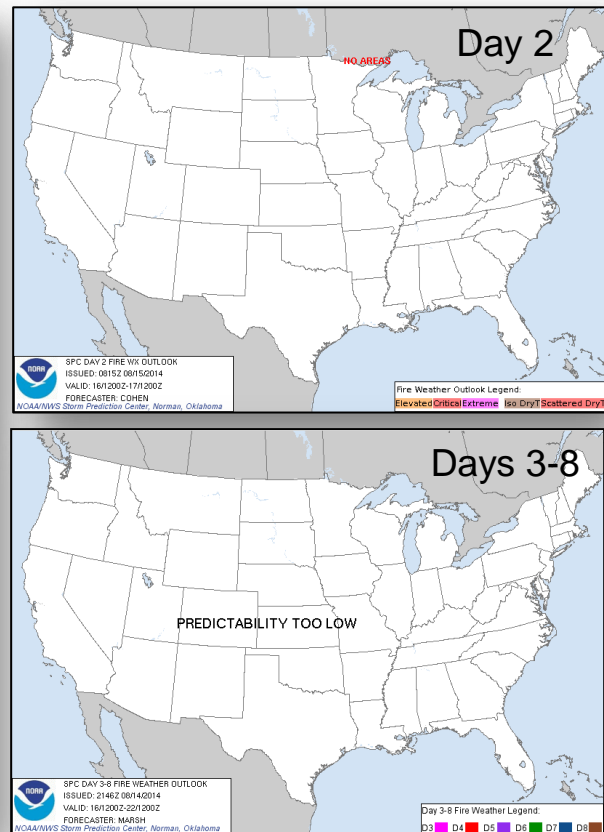
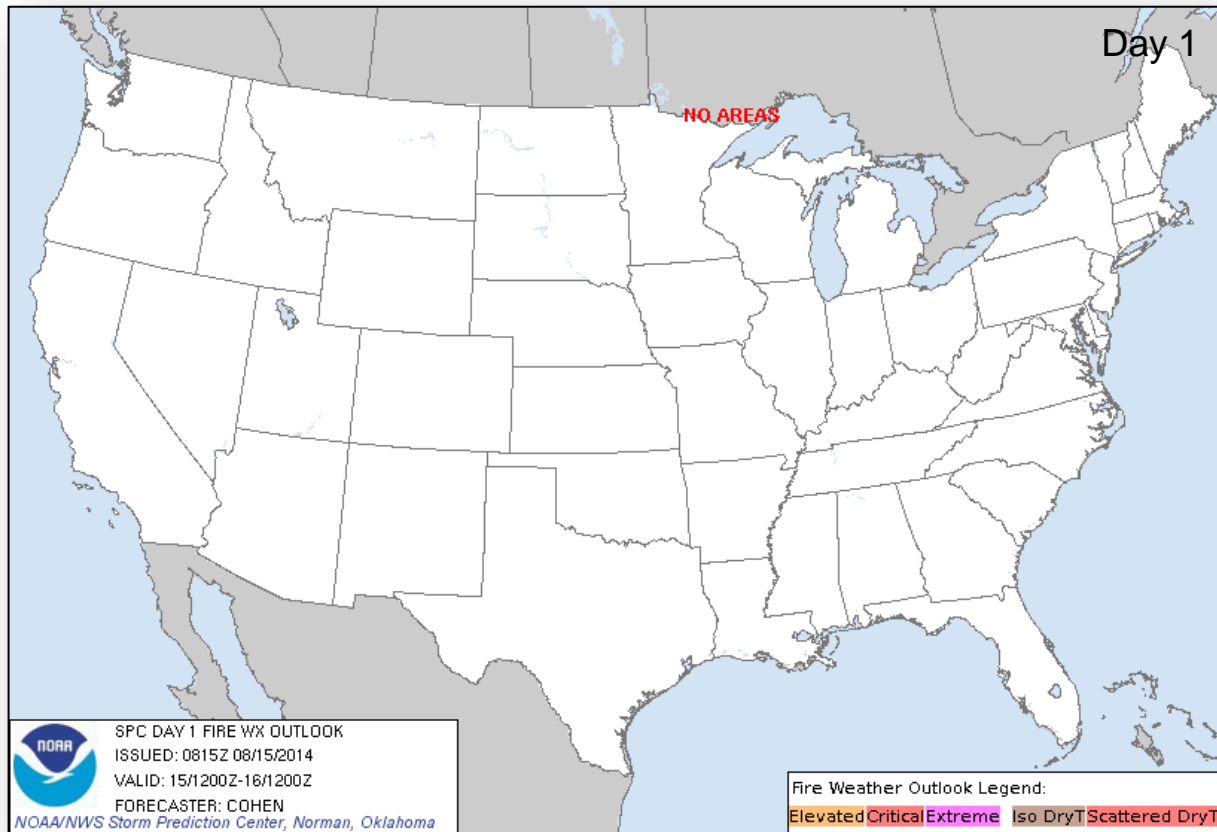
FEMA



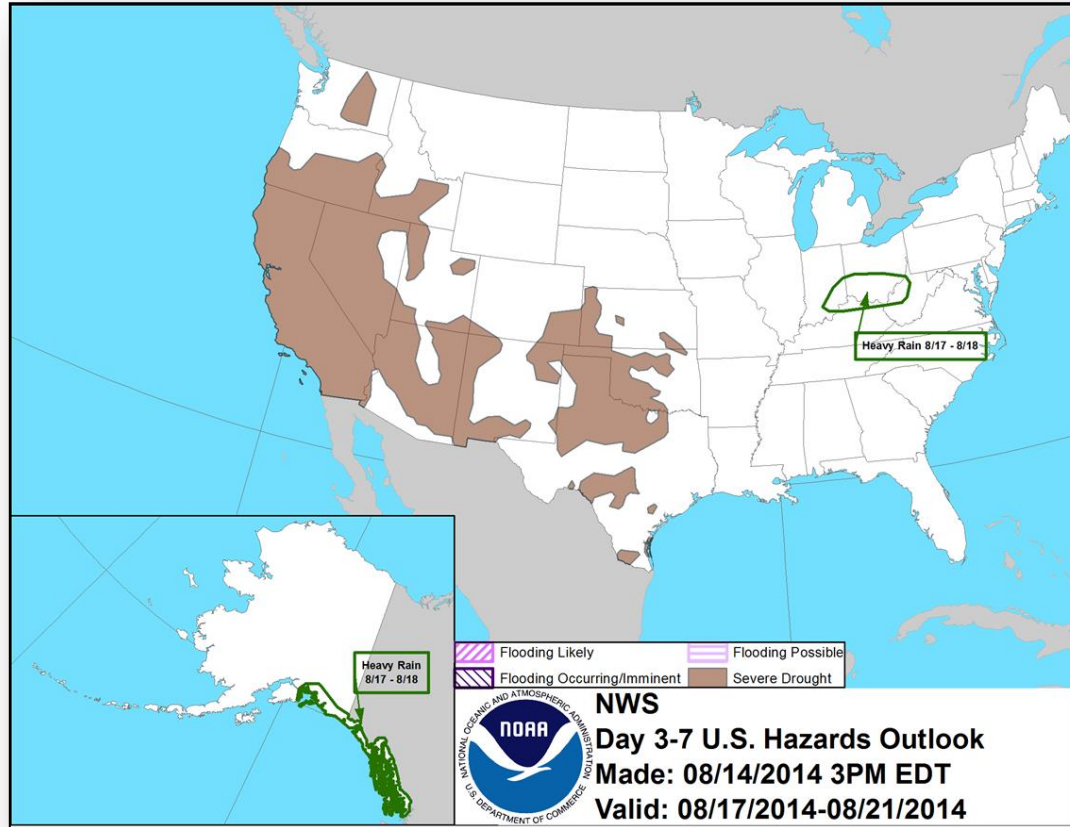
Fire Weather Outlook, Days 1 – 8



FEMA



Hazard Outlook: August 17 – 21



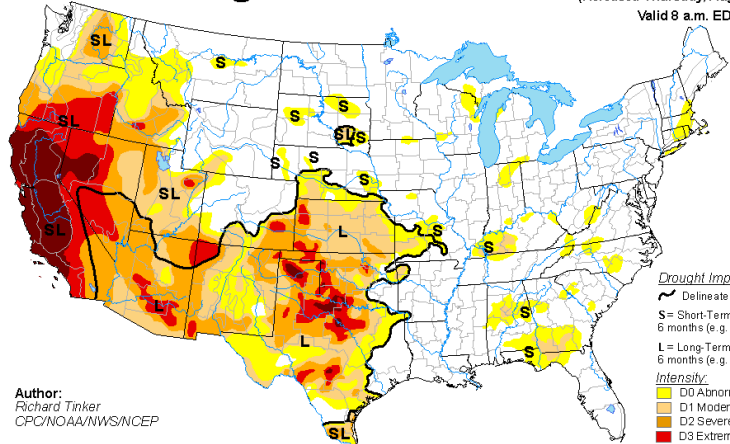
U.S. Drought Monitor – as of Aug 12



FEMA

U.S. Drought Monitor

August 12, 2014
(Released Thursday, Aug. 14, 2014)
Valid 8 a.m. EDT



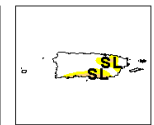
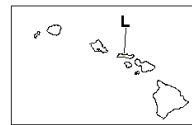
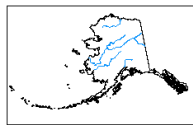
Author:
Richard Tinker
CPC/NOAA/NWS/NCEP

Drought Impact Types:
~ Delineates dominant impacts
S = Short-Term, typically less than 6 months (e.g. agriculture, grasslands)
L = Long-Term, typically greater than 6 months (e.g. hydrology, ecology)
Intensity:
D0 Abnormally Dry
D1 Moderate Drought
D2 Severe Drought
D3 Extreme Drought
D4 Exceptional Drought

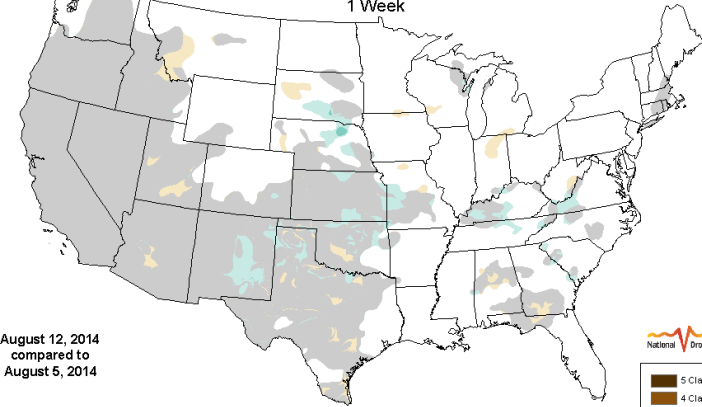
The Drought Monitor focuses on broad-scale conditions. Local conditions may vary. See accompanying text summary for forecast statements.



<http://droughtmonitor.unl.edu/>



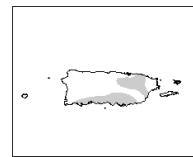
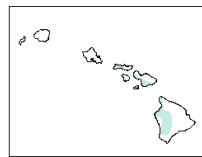
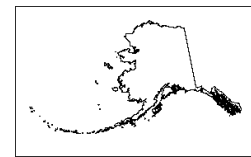
U.S. Drought Monitor Class Change 1 Week



August 12, 2014
compared to
August 5, 2014



5 Class Degradation
4 Class Degradation
3 Class Degradation
2 Class Degradation
1 Class Degradation
No Change
1 Class Improvement
2 Class Improvement
3 Class Improvement
4 Class Improvement
5 Class Improvement

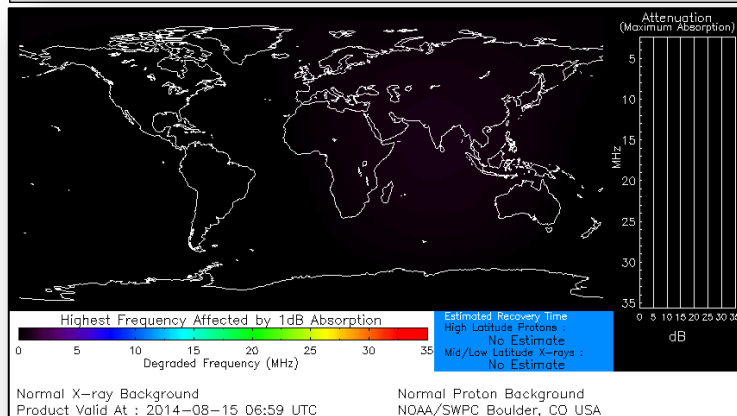


<http://droughtmonitor.unl.edu>

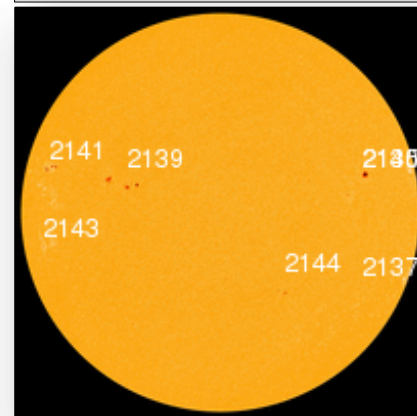
Space Weather

NOAA Scales Activity (Range: 1/minor to 5/extreme)	Past 24 Hours	Current	Next 24 Hours
Space Weather Activity:	None	None	None
• Geomagnetic Storms	None	None	None
• Solar Radiation Storms	None	None	None
• Radio Blackouts	None	None	None

HF Communication Impact



Sunspot Activity



FEMA Readiness – Deployable Teams/Assets



Deployable Teams/Assets									
Resource	Status	Total	Available		Partially Available	Not Available	Detailed Deployed Activated	Comments	Rating Criterion
FCO		39	15	38%	0	1	23		OFDC Readiness: FCO Green Yellow Red Type 1 3+ 2 1 Type 2 4+ 3 2 Type 3 4 3 2 FDRC 3 2 1
FDRC		10	5	50%	0	0	5		
US&R		28	26	93%	1	1	0	<ul style="list-style-type: none"> NM-TF1 (Red for personnel shortages) CA-TF1 (Yellow for logistics & management) 	<ul style="list-style-type: none"> Green = Available/FMC Yellow = Available/PMC Red = Out-of-Service Blue = Assigned/Deployed
National IMAT		3	3	100%	0	0	0		<ul style="list-style-type: none"> Green: 3 avail Yellow: 1-2 avail Red: 0 avail (<i>Individual N-IMAT red if 50% of Section Chiefs and/or Team Leader is unavailable for deployment.</i>)
Regional IMAT		13	4	31%	3	4	2	<u>Partially Mission Capable (PMC):</u> <ul style="list-style-type: none"> Region II, III, VI (Team 1) <u>Not Mission Capable (NMC):</u> <ul style="list-style-type: none"> Region V, VI (Team 2), VII, IX <u>Deployed</u> <ul style="list-style-type: none"> Region X to WA Region VIII to SD 	<ul style="list-style-type: none"> Green: 7 or more avail Yellow: 4 - 6 teams available Red: > 8 teams deployed/unavailable <i>R-IMAT also red if TL Ops/Log Chief is unavailable and has no qualified replacement.</i>
MCOV		55	48	87%	0	7	0		<ul style="list-style-type: none"> Green = 80 – 100% avail Yellow = 60 – 79% avail Red = 59% or below avail Readiness remains 95%

FEMA Readiness – National/Regional Teams



National/Regional Teams									
Resource	Status	Total	Available		Partially Available	Not Available	Deployed/ Activated	Comments	Rating Criterion
NWC		5	5	100%	0	0	24/7	Enhanced Watch (UC UCG)	<div>• Green = FMC</div> <div>• Yellow = PMC</div> <div>• Red = NMC</div>
NRCC		2	344	89%	0	44	Not Activated		
HLT		1	N/A	N/A	0	1	Activated	Activated	
DEST							Not Activated		
RRCCs		10	10	100%	0	0	0	Region VIII: Enhanced Watch (dayshift) Region V: Enhanced Watch (24/7)	
RWCs/MOCs		10	10	100%	0	0	24/7		

Ebola Virus Disease (EVD)

Current Numbers (as of Aug. 13, 2014)

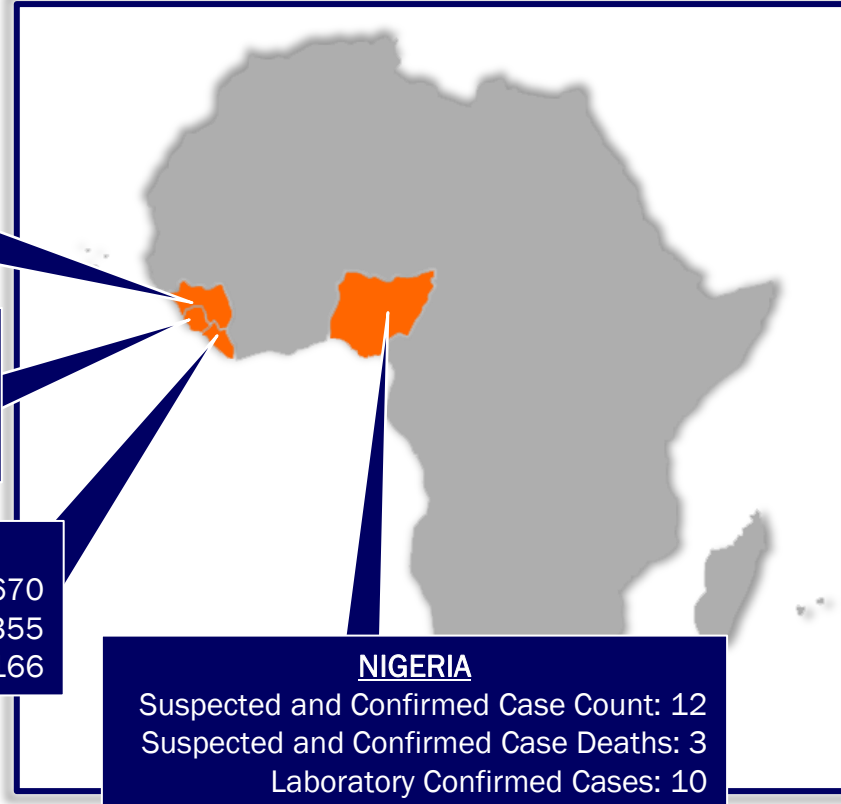


Suspected and Confirmed Case Count: 1975/ Suspected Case Deaths: 1069 / Laboratory Confirmed Cases: 1251

GUINEA
Suspected and Confirmed Case Count: 510
Suspected and Confirmed Case Deaths: 377
Laboratory Confirmed Cases: 369

SIERRA LEONE
Suspected and Confirmed Case Count: 783
Suspected and Confirmed Case Deaths: 334
Laboratory Confirmed Cases: 706

LIBERIA
Suspected and Confirmed Case Count: 670
Suspected and Confirmed Case Deaths: 355
Laboratory Confirmed Cases: 166



<http://www.cdc.gov/vhf/ebola/outbreaks/guinea/index.html>

Critical Information – EVD



- Aggravating factors for local spread:
 - Public health infrastructure
 - Available resources
 - Compliance with guidance
- CDC, USAID, and other USG assets assisting in affected countries
- Asymptomatic not known to transmit disease
- Requires direct contact with bodily secretions/blood or object(s) contaminated with these
- NO new cases identified in US (two repatriated for treatment in Atlanta)
- Given method of spread, wide dissemination and epidemic not anticipated in US
- Vaccine and other therapeutics under investigation



FEMA

FEMA's mission is to support our citizens and first responders to ensure that as a nation we work together to build, sustain, and improve our capability to prepare for, protect against, respond to, recover from, and mitigate all hazards.