



FEMA

Daily Operations Briefing

Monday, August 18, 2014

8:30 a.m. EDT

Significant Activity: August 15 – 18



Significant Events:

- Wildfire Activity – Northern CA & WA

Tropical Activity:

- Atlantic – Disturbance 1 (Low; 10%)
- Eastern Pacific – Tropical Storm Karina; Tropical Depression Twelve-E
- Central Pacific – Disturbance 1 (Low; 20%), Disturbance 2 (Low; 0%)

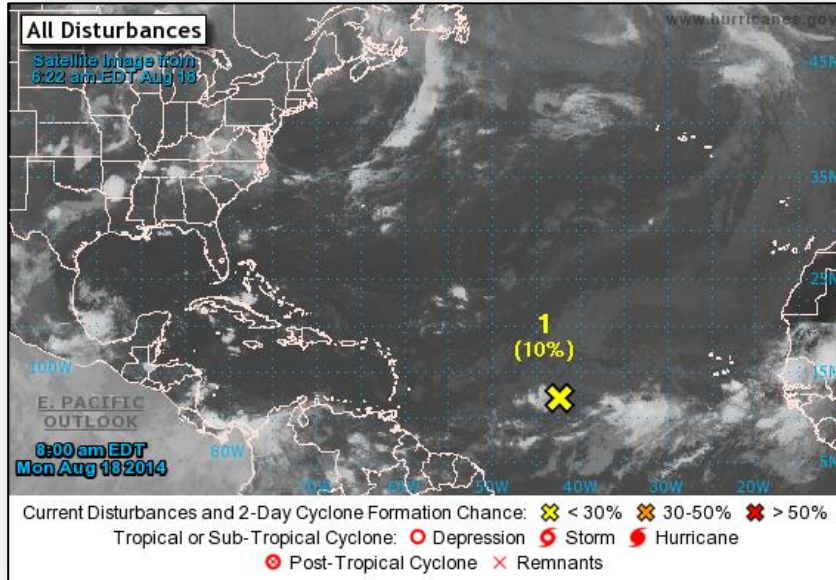
Significant Weather:

- Severe thunderstorms possible – Middle/Upper Mississippi valleys
- Flash flooding possible – Lower Mississippi Valley to Mid-Atlantic & Southwest
- Dry thunderstorms & Red Flag Warnings: CA & OR
- Space Weather – Past 24 hours / Next 24 hours: No significant activity

FEMA Readiness: No significant changes

Declaration Activity: No activity

2-Day Tropical Outlook – Atlantic



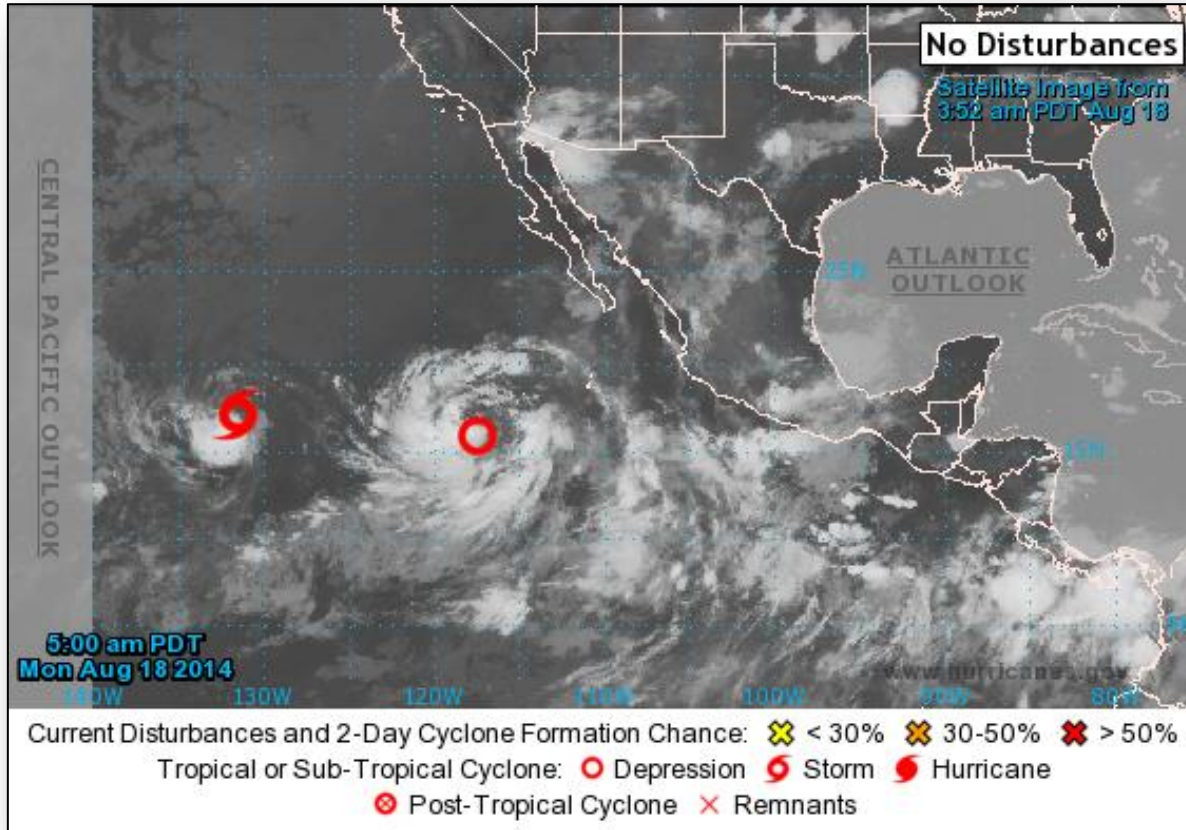
Disturbance 1 (as of 8:00 a.m. EDT)

- Located midway between Lesser Antilles and Cape Verde Islands
- Moving slowly westward
- Significant development not expected next couple of days
- After that time, conditions could become a little more favorable
- Formation chance:
 - Next 48 hours: Low (10%)
 - Next 5 days: Medium (30%)

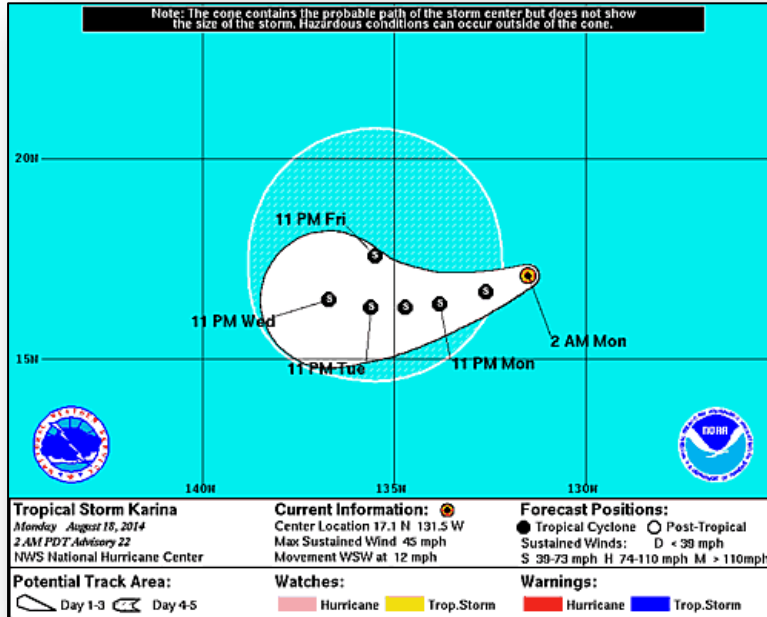
2-Day Tropical Outlook – Eastern Pacific



FEMA



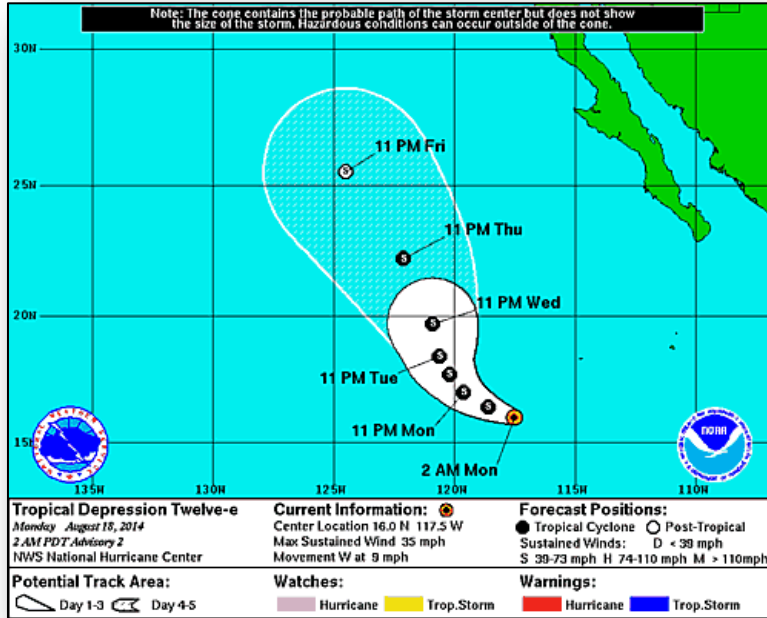
2-Day Tropical Outlook – Eastern Pacific



Tropical Storm Karina (as of 5:00 a.m. EDT)

- Located 1,555 miles E of Hilo, Hawaii
- Moving WSW at 12 mph
- A slower WSW to W motion expected next couple days
- Maximum sustained winds 45 mph
- Some slight strengthening forecast next 48 hours
- Tropical storm force winds extend 80 miles

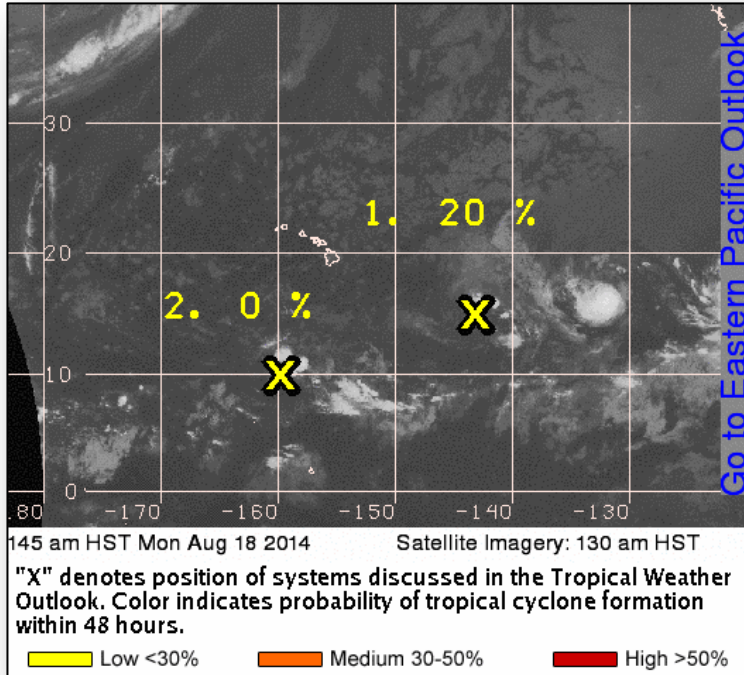
2-Day Tropical Outlook – Eastern Pacific



Tropical Depression Twelve-E (as of 5:00 a.m. EDT)

- Located 685 miles SW of southern tip of Baja California, Mexico
- Moving W at 9 mph
- A turn NW forecast tonight, with a turn N possible on Tuesday
- Maximum sustained winds 35 mph
- Some gradual strengthening forecast
- Could become a tropical storm later today
- No coastal watches or warnings in effect

2-Day Tropical Outlook – Central Pacific



Disturbance 1 (as of 8:00 a.m. EDT)

- Located 860 miles ESE of Hilo, Hawaii
- Moving slowly west
- Conditions becoming less conducive for development next couple of days
- Formation chance next 48 hours: Low (20%)

Disturbance 2 (as of 8:00 a.m. EDT)

- Located 800 miles south of Honolulu, Hawaii
- Moving slowly west
- Further development not likely next two days
- Slight chance of development the next 2 days
- Formation chance next 48 hours: Low (near 0%)

Wildfire Summary



Fire Name (County)	FMAG #	Acres Burned	% Contained Est. Containment date	Evacuations (Residents)	Structures Threatened	Structures Destroyed	Fatalities / Injuries
Washington (1)							
Devil's Elbow Complex (FINAL) (Colville Indian Reservation)	None	26,428 (+79)	60% (+30)	Lifted	41 homes 20 other	2 other	0 / 13 (+3)
California (1)							
July Complex (FINAL) (Siskiyou County)	None	33,332 (+1,160)	82% (+22%)	Mandatory	140 (-2) homes 71 (-7) other	2 other	0 / 0

Disaster Requests & Declarations

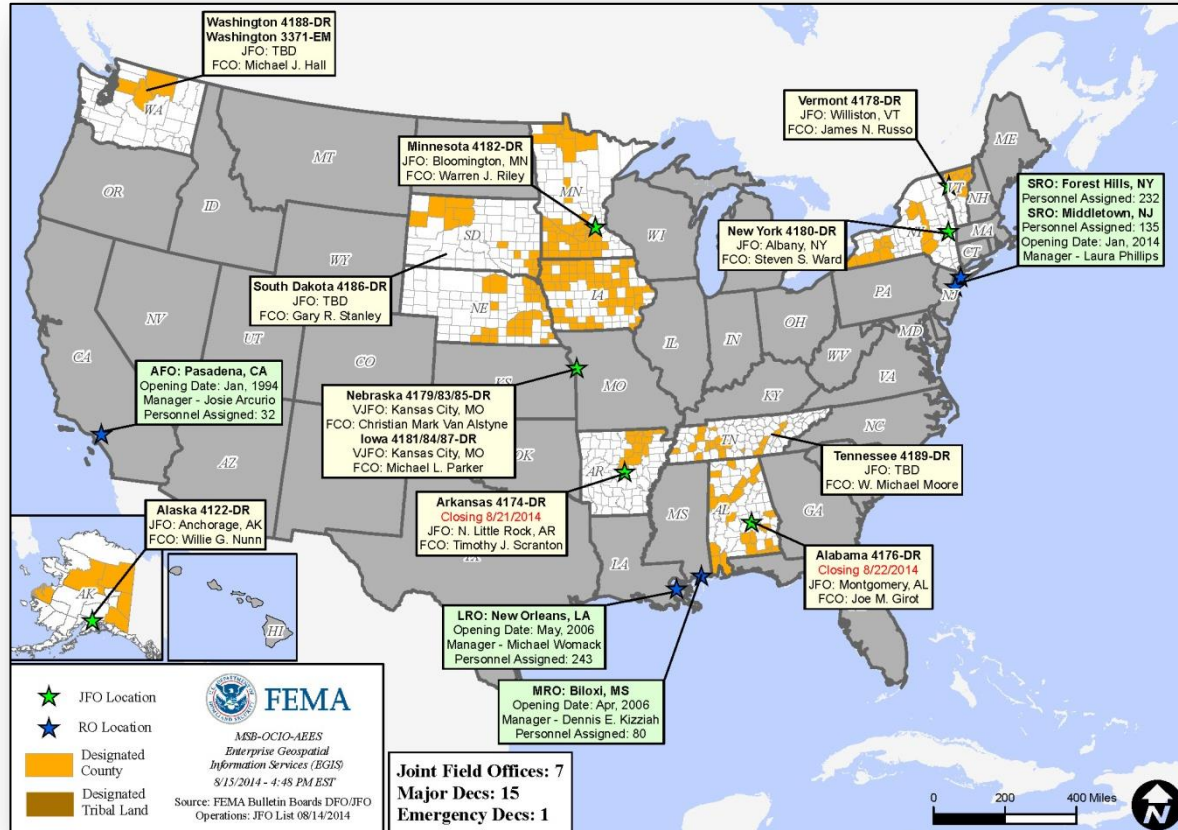


Declaration Requests in Process		Requests APPROVED (since last report)	Requests DENIED (since last report)
1	Date Requested	0	0
ND – DR Severe Storms and Flooding	August 8, 2014		

Open JFOs Sunday, August 18, 2014



FEMA



Joint Preliminary Damage Assessments

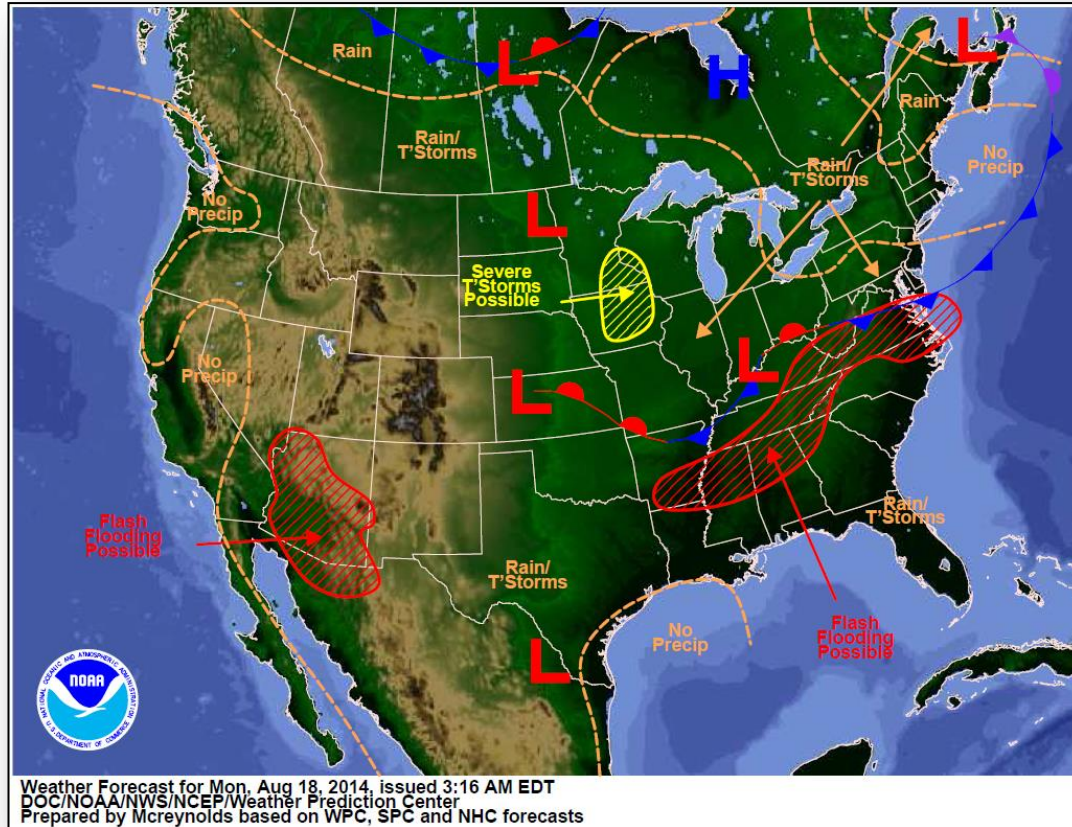


Region	State / Location	Event	IA/PA	Number of Counties		Start – End
				Requested	Complete	
VIII	Utah	Severe storm & Mudslide August 4, 2014	IA	1	1	8/14 – 8/15
			PA	1	1	8/13 – 8/14
IX	Guam	Typhoon Halong July 2014	PA	2	2	8/8 – 8/14
IX	Hawaii	Hurricane Iselle August 2014	IA	1	0	8/15 – 8/18

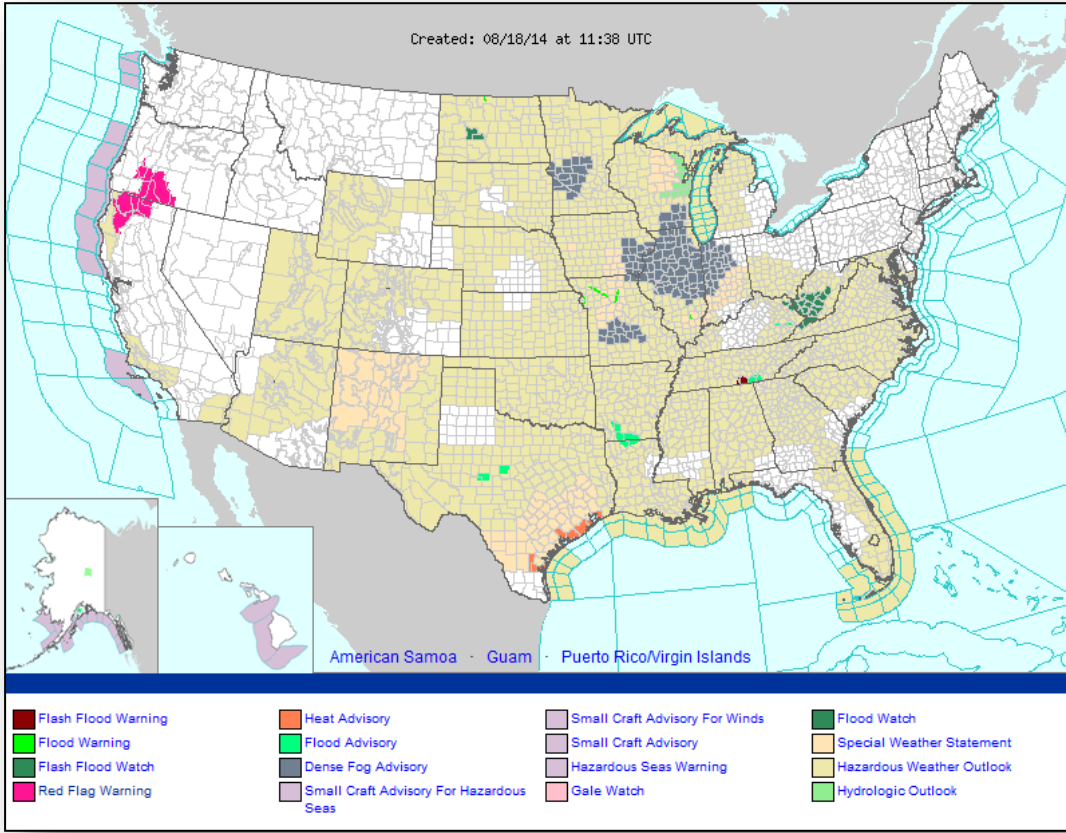
National Weather Forecast



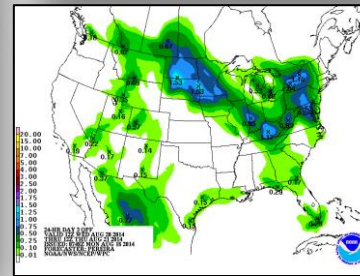
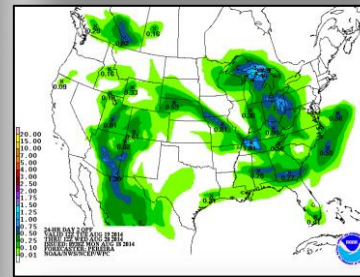
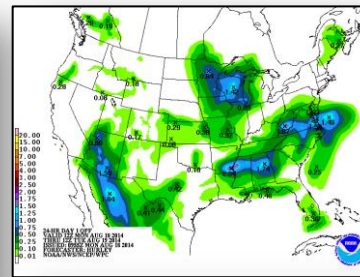
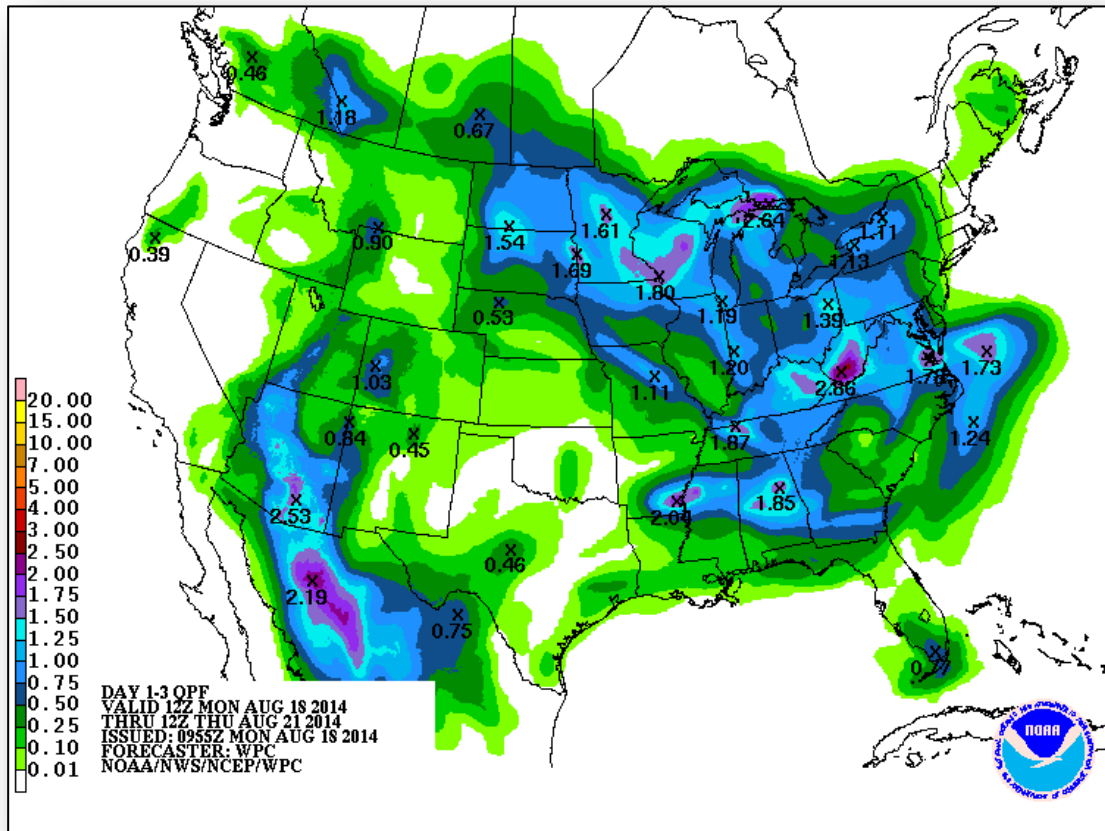
FEMA



Active Watches/Warnings



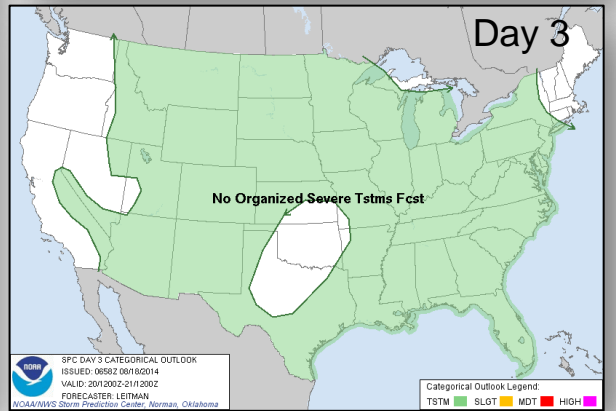
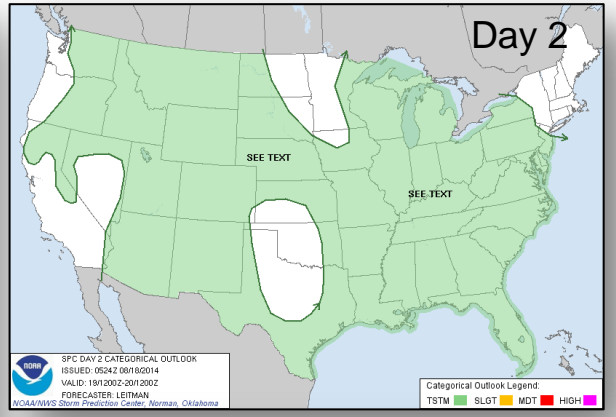
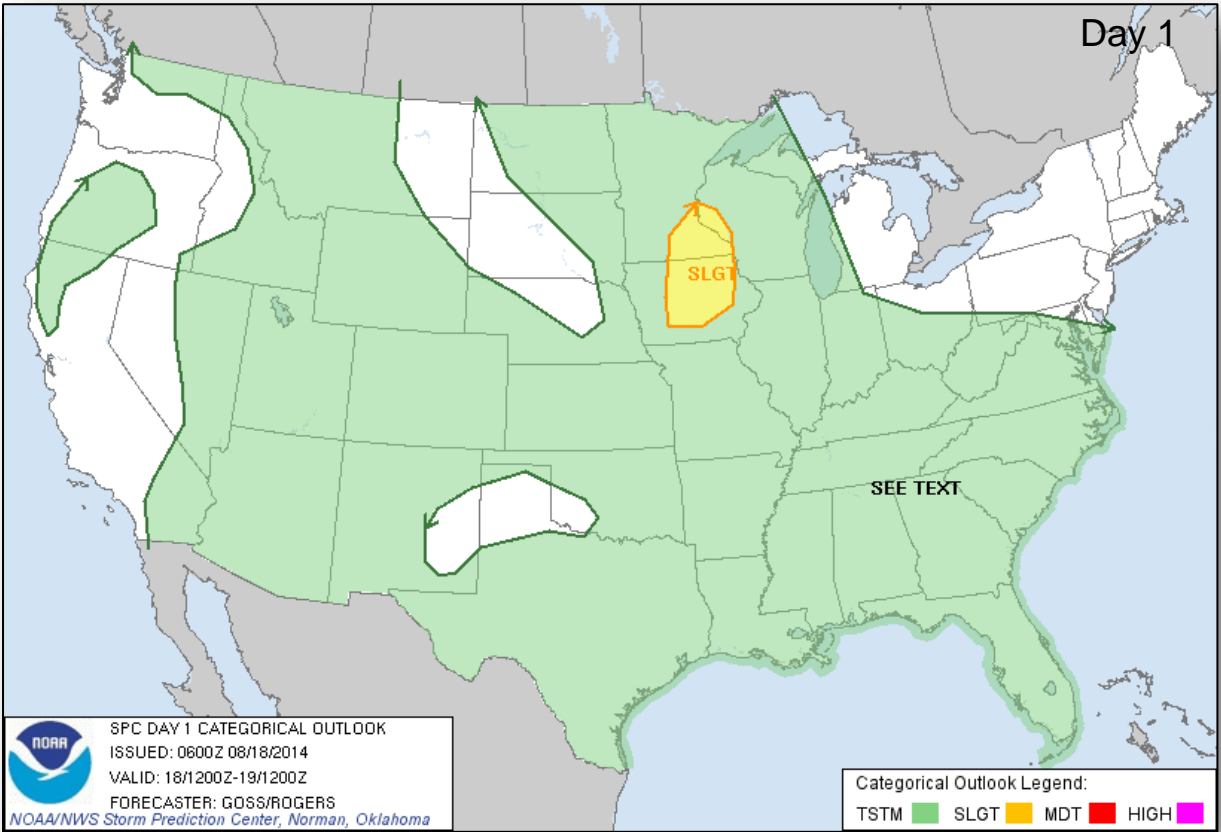
Precipitation Forecast – 3 Day



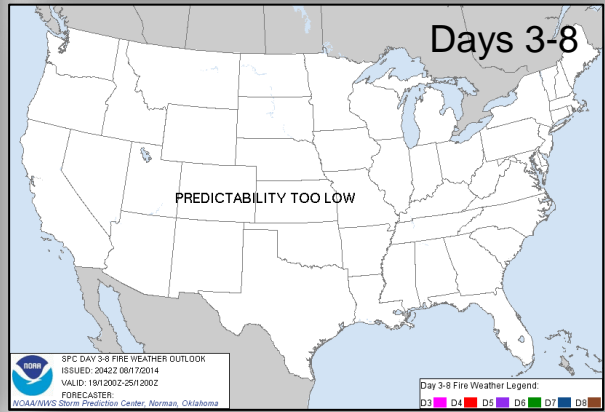
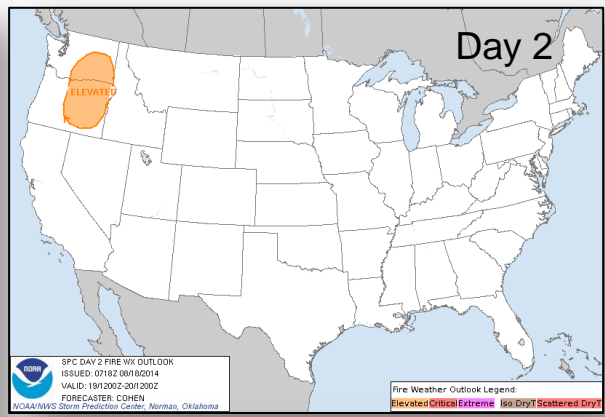
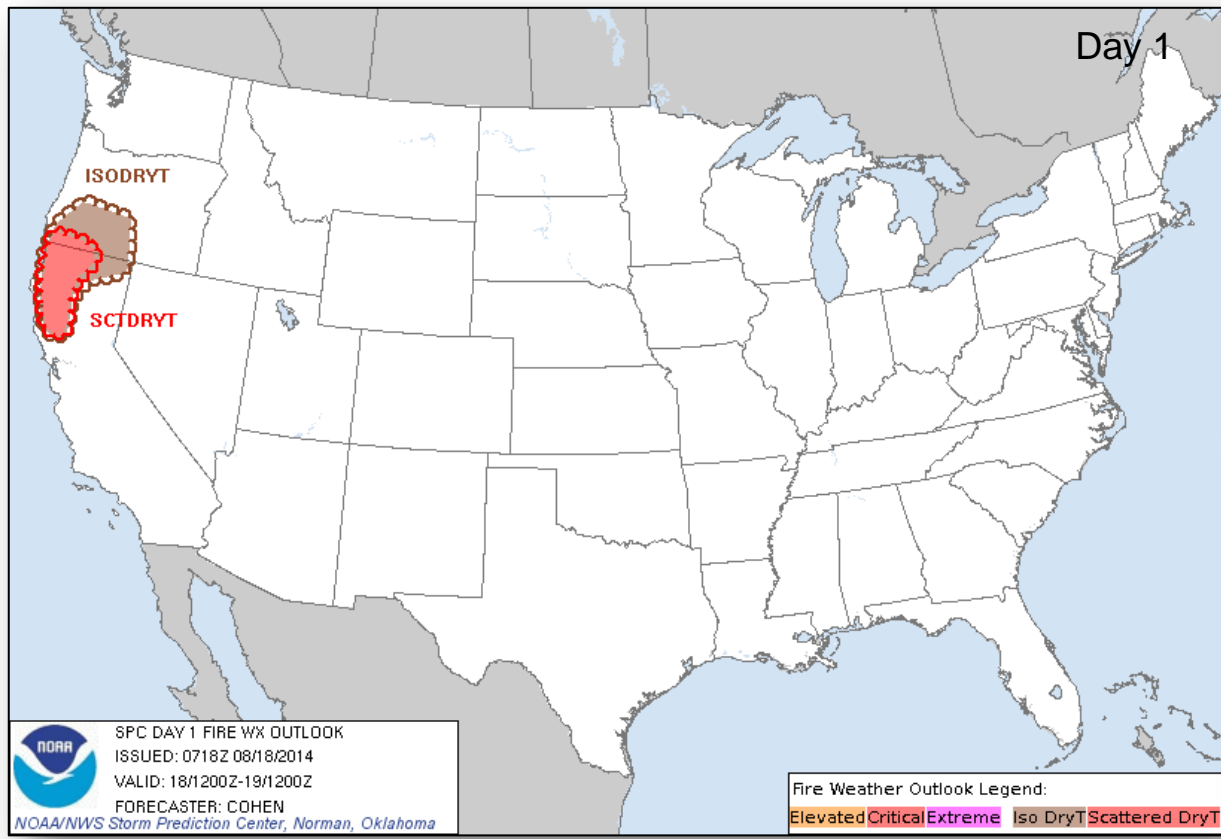
River Forecast



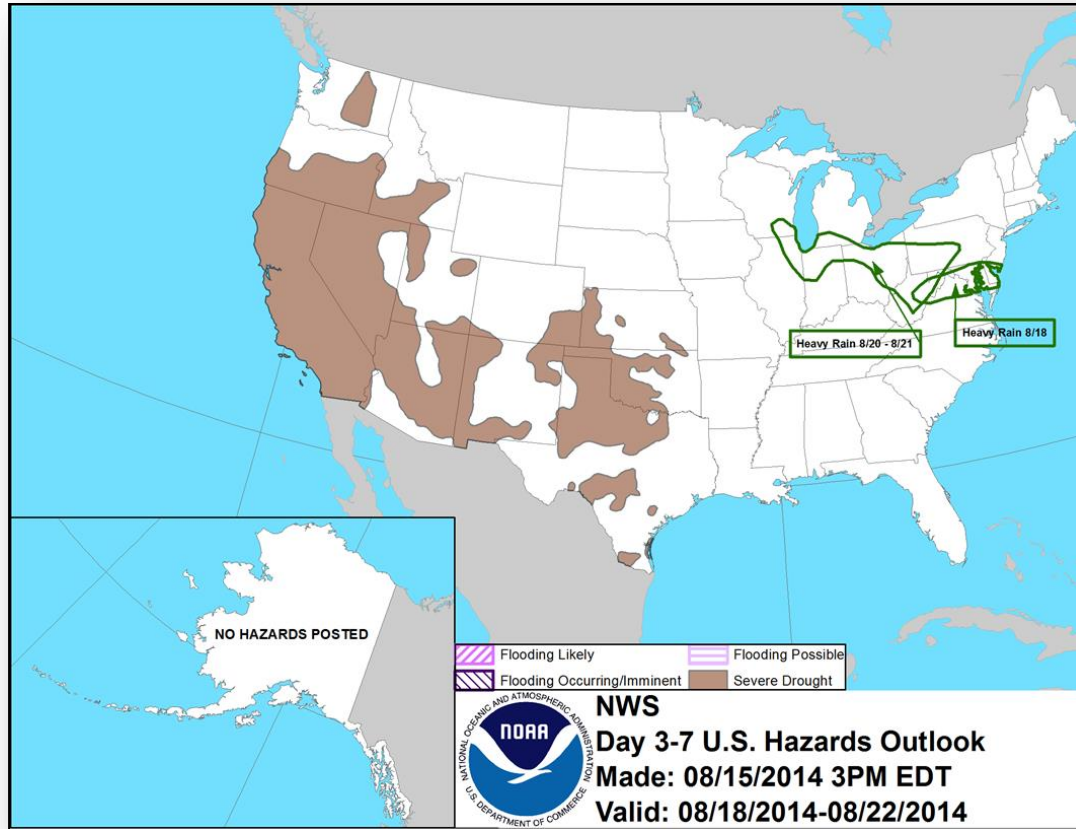
Convective Outlook, Days 1 – 3



Fire Weather Outlook, Days 1 – 8



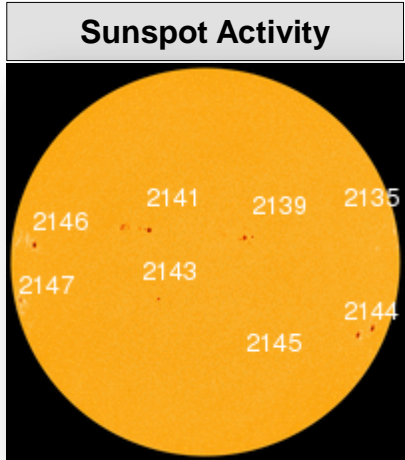
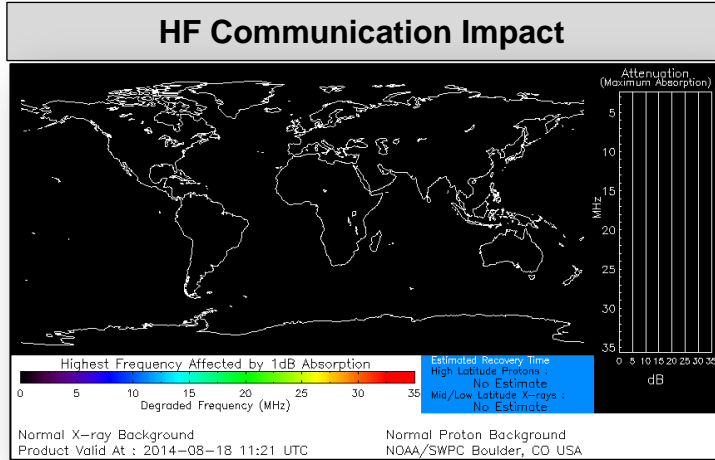
Hazard Outlook: August 18 – 22



Space Weather



NOAA Scales Activity (Range: 1/minor to 5/extreme)	Past 24 Hours	Current	Next 24 Hours
Space Weather Activity:	None	None	None
• Geomagnetic Storms	None	None	None
• Solar Radiation Storms	None	None	None
• Radio Blackouts	None	None	None



FEMA Readiness – Deployable Teams/Assets



Deployable Teams/Assets									
Resource	Status	Total	Available		Partially Available	Not Available	Detailed Deployed Activated	Comments	Rating Criterion
FCO	Green	39	15	38%	0	1	23		OFDC Readiness: FCO Green Yellow Red Type 1 3+ 2 1 Type 2 4+ 3 2 Type 3 4 3 2 FDRC 3 2 1
FDRC		10	5	50%	0	0	5		
US&R	Green	28	26	93%	1	1	0	<ul style="list-style-type: none"> NM-TF1 (Red for personnel shortages) CA-TF1 (Yellow for logistics & management) 	<ul style="list-style-type: none"> Green = Available/FMC Yellow = Available/PMC Red = Out-of-Service Blue = Assigned/Deployed
National IMAT	Green	3	3	100%	0	0	0		<ul style="list-style-type: none"> Green: 3 avail Yellow: 1-2 avail Red: 0 avail (<i>Individual N-IMAT red if 50% of Section Chiefs and/or Team Leader is unavailable for deployment.</i>)
Regional IMAT	Yellow	13	4	31%	3	4	2	<u>Partially Mission Capable (PMC):</u> <ul style="list-style-type: none"> Region II, III, VI (Team 1) <u>Not Mission Capable (NMC):</u> <ul style="list-style-type: none"> Region V, VI (Team 2), VII, IX <u>Deployed</u> <ul style="list-style-type: none"> Region X to WA Region VIII to SD 	<ul style="list-style-type: none"> Green: 7 or more avail Yellow: 4 - 6 teams available Red: > 8 teams deployed/unavailable <p><i>R-IMAT also red if TL Ops/Log Chief is unavailable and has no qualified replacement.</i></p>
MCOV	Green	55	48	87%	0	7	0		<ul style="list-style-type: none"> Green = 80 – 100% avail Yellow = 60 – 79% avail Red = 59% or below avail Readiness remains 95%

FEMA Readiness – National/Regional Teams



National/Regional Teams									
Resource	Status	Total	Available		Partially Available	Not Available	Deployed/ Activated	Comments	Rating Criterion
NWC		5	5	100%	0	0	24/7	Enhanced Watch (UC UCG)	<ul style="list-style-type: none"> • Green = FMC • Yellow = PMC • Red = NMC
NRCC		2	344	89%	0	44	Not Activated		
HLT		1	N/A	N/A	0	1	Activated	Activated	
DEST							Not Activated		
RRCCs		10	10	100%	0	0	0		
RWCs/MOCs		10	10	100%	0	0	24/7		



FEMA

FEMA's mission is to support our citizens and first responders to ensure that as a nation we work together to build, sustain, and improve our capability to prepare for, protect against, respond to, recover from, and mitigate all hazards.