



FEMA

Daily Operations Briefing

Tuesday, August 19, 2014

8:30 a.m. EDT

Significant Activity: August 18 – 19



Significant Events: Wildfire Activity – CA

Tropical Activity:

- Atlantic – Disturbance 1 (Low; 10%); Disturbance 2 (Low; 10%)
- Eastern Pacific – Tropical Storm Karina; Tropical Depression Twelve-E; Disturbance 1 (Low; 10%)
- Central Pacific – Disturbance 1 (Low; 10%), Disturbance 2 (Low; 10%)

Significant Weather:

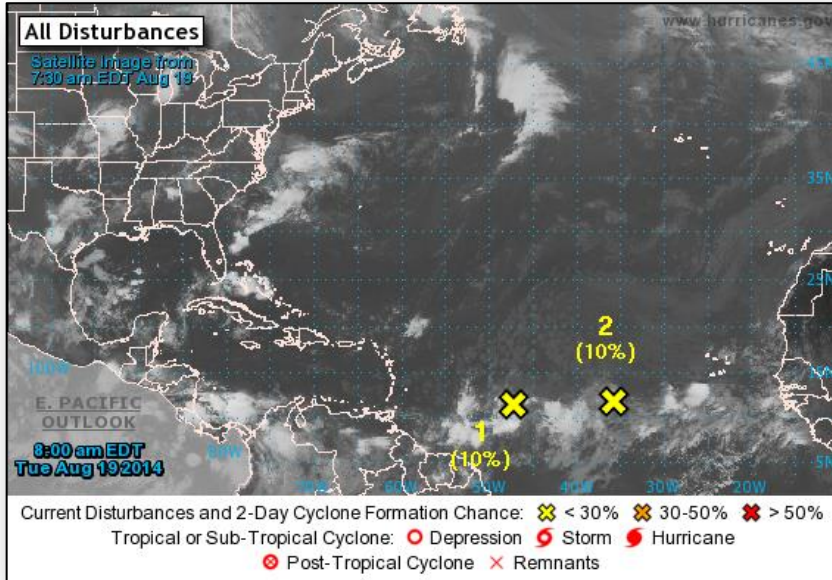
- Slight risk for severe thunderstorms – Ohio Valley to Great Lakes
- Flash flooding possible – Southwest to Central Great Basin
- Elevated Fire Weather: WA & OR
- Red Flag Warnings: TX
- Space Weather – Past 24 hours: none; next 24 hours: Minor/G1 geomagnetic storms

FEMA Readiness: No significant changes

Declaration Activity:

- FMAGs approved – Junction Fire (FEMA-5074-FM) and the Way Fire (FEMA-5075-FM) in California

2-Day Tropical Outlook – Atlantic



Disturbance 1 (as of 8:00 a.m. EDT)

- Located 1,000 miles E of Lesser Antilles
- Some slow development possible later this week
- Formation chance:
 - Next 48 hours: Low (10%)
 - Next 5 days: Low (20%)

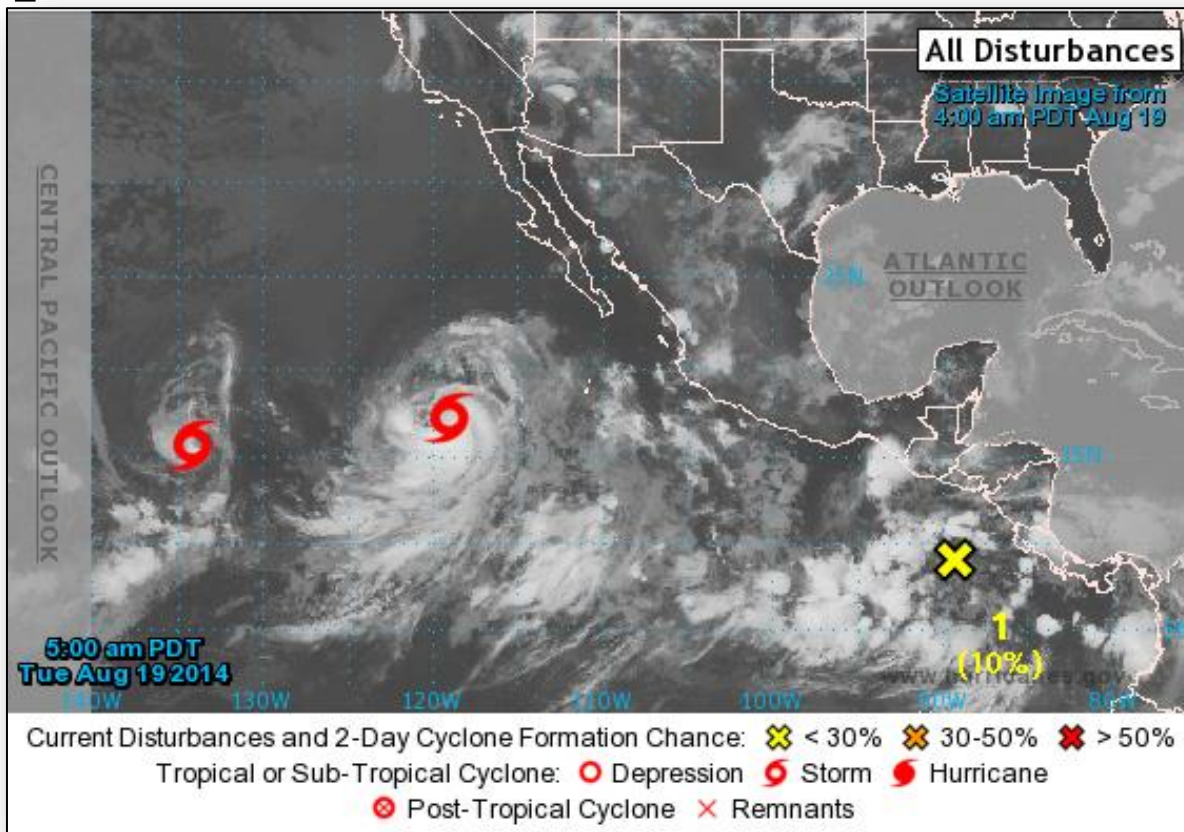
Disturbance 2 (as of 8:00 a.m. EDT)

- Located midway between west coast of Africa and Lesser Antilles
- Moving WNW at 10 mph
- Some slow development possible over next several days
- Formation chance:
 - Next 48 hours: Low (10%)
 - Next 5 days: Low (20%)

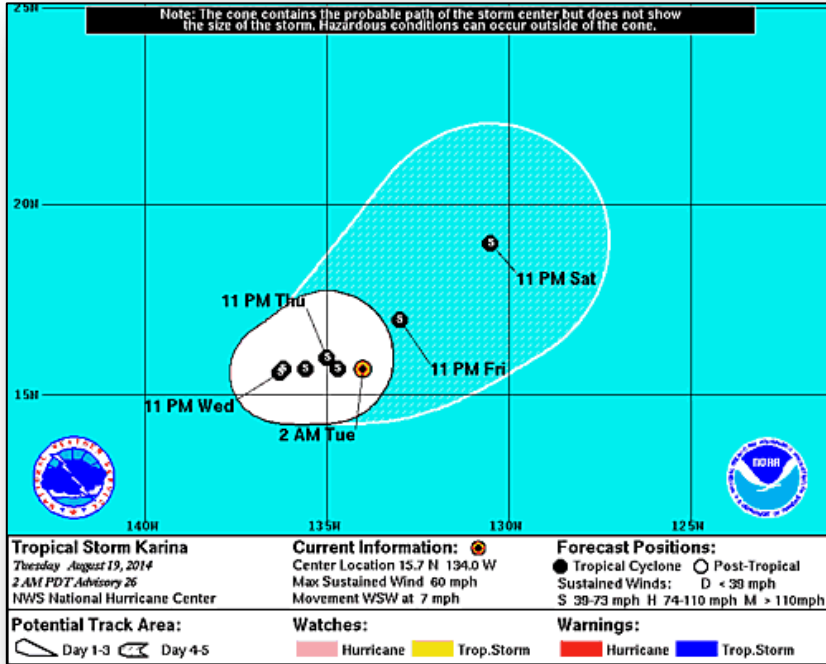
2-Day Tropical Outlook – Eastern Pacific



FEMA



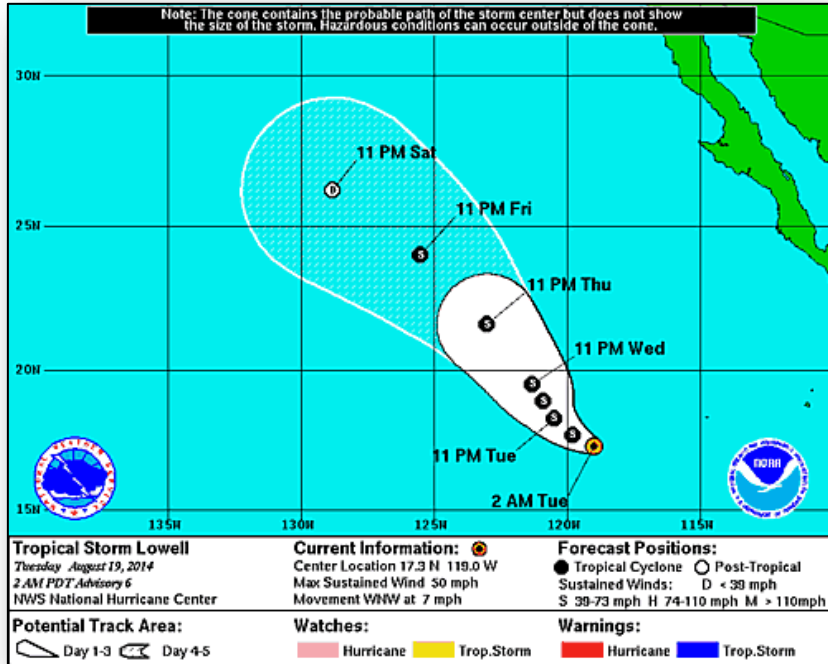
Tropical Storm Karina – Eastern Pacific



Tropical Storm Karina (as of 5:00 a.m. EDT)

- Located 1,415 miles E of Hilo, Hawaii
- Moving WSW at 7 mph
- Forecast to turn W and slow down; could become stationary by Wednesday night
- Maximum sustained winds 60 mph
- Little change in strength forecast next 48 hours
- Tropical storm force winds extend 80 miles
- No coastal watches or warnings in effect

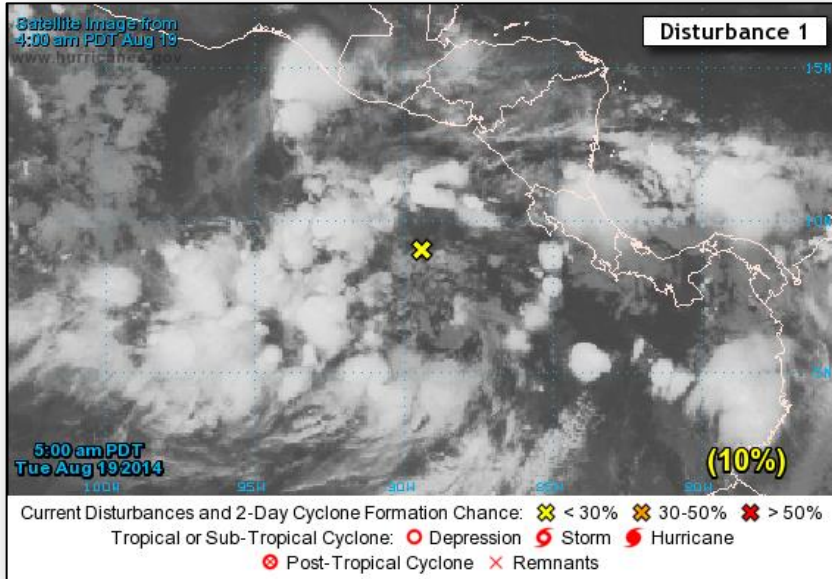
Tropical Storm Lowell – Eastern Pacific



Tropical Storm Lowell (as of 5:00 a.m. EDT)

- Located 705 miles WSW of southern tip of Baja California, Mexico
- Moving WNW at 7 mph
- Turn toward NW forecast later today, followed by turn NNW tonight and Wed
- Maximum sustained winds 50 mph
- Some additional strengthening forecast next 48 hours
- Tropical storm force winds extend 140 miles
- No coastal watches or warnings in effect

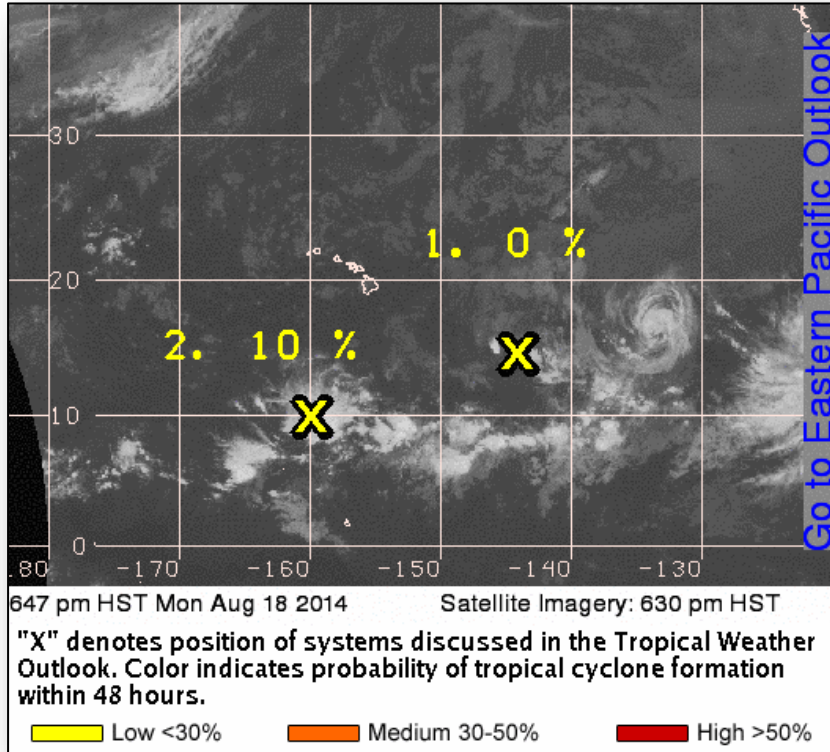
2-Day Tropical Outlook – Eastern Pacific



Disturbance 1 (as of 8:00 a.m. EDT)

- Located over far eastern Pacific
- Moving WNW off coast of southwestern Mexico
- Conditions conducive for development; could become tropical depression by weekend
- Formation chance:
 - Next 48 hours: Low (10%)
 - Next 5 days: High (70%)

2-Day Tropical Outlook – Central Pacific



Disturbance 1 (as of 8:00 a.m. EDT)

- Located 800 miles ESE of Hilo, Hawaii
- Moving slowly W
- Conditions not conducive for development next two days
- Formation chance next 48 hours: Low (10%)

Disturbance 2 (as of 8:00 a.m. EDT)

- Located 800 miles south of Honolulu, Hawaii
- Moving slowly west
- Conditions not conducive for development next two days
- Formation chance next 48 hours: Low (10%)

Junction Fire – California



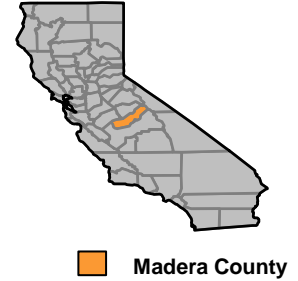
Fire Name	Location	Acres burned	% Contained	Est. Full Containment	FMAG	Structures Lost / Threatened	Fatalities / Injuries
Junction Fire	Madera County	1,200	0%	N/A	Approved August 19 FEMA-5074-FM-CA	3 (2 homes) / 500 (300 homes)	0 / 2

Situation

- Began August 18, 2014 in and around community of Oakhurst (population 2,829), 40 miles north of Fresno
- Burning on State and private land
- Mandatory evacuations in effect for 1,542 residents
- 2 shelters open with 25 occupants *(ARC midnight shelter report, 3:33 am EDT, August 19)*
- 500 firefighting personnel

Response

- CA SOC is partially activated (Level 2)
- FEMA Region IX remains at Watch/Steady State



Way Fire – California



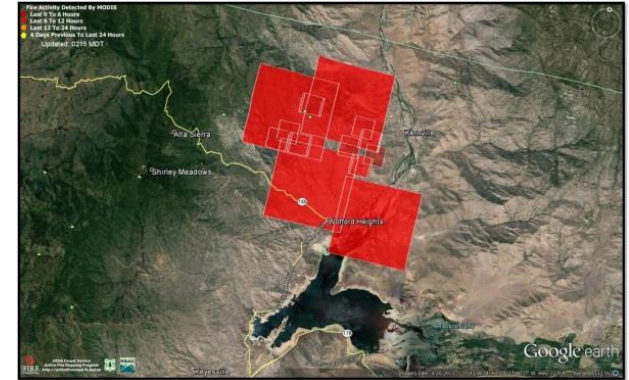
Fire Name	Location	Acres burned	% Contained	Est. Full Containment	FMAG	Structures Lost / Threatened	Fatalities / Injuries
Way Fire	Kern County	3,000	0%	N/A	Approved August 19 FEMA-5075-FM-CA	6 (all homes) / 1,650 (1,300 homes)	0 / 0

Situation

- Began August 18, 2014, in and around Kernville (pop. 1,395), Wofford Heights (pop. 2,220), and Alta Sierra Community (pop. 300)
- Burning on Federal, State and private land
- Mandatory evacuations in effect for 250 residents; voluntary evacuations in effect for 4,000 residents
- Two assisted living facilities advised to prepare to evacuate
- Power lines feeding all three communities are threatened
- One shelter open with 1 occupant (*ARC midnight shelter report, 3:33 am EDT, August 19*)
- 450 firefighting personnel

Response

- CA SOC is partially activated (Level 2)
- FEMA Region IX remains at Watch/Steady State



 Kern County

Wildfire Summary



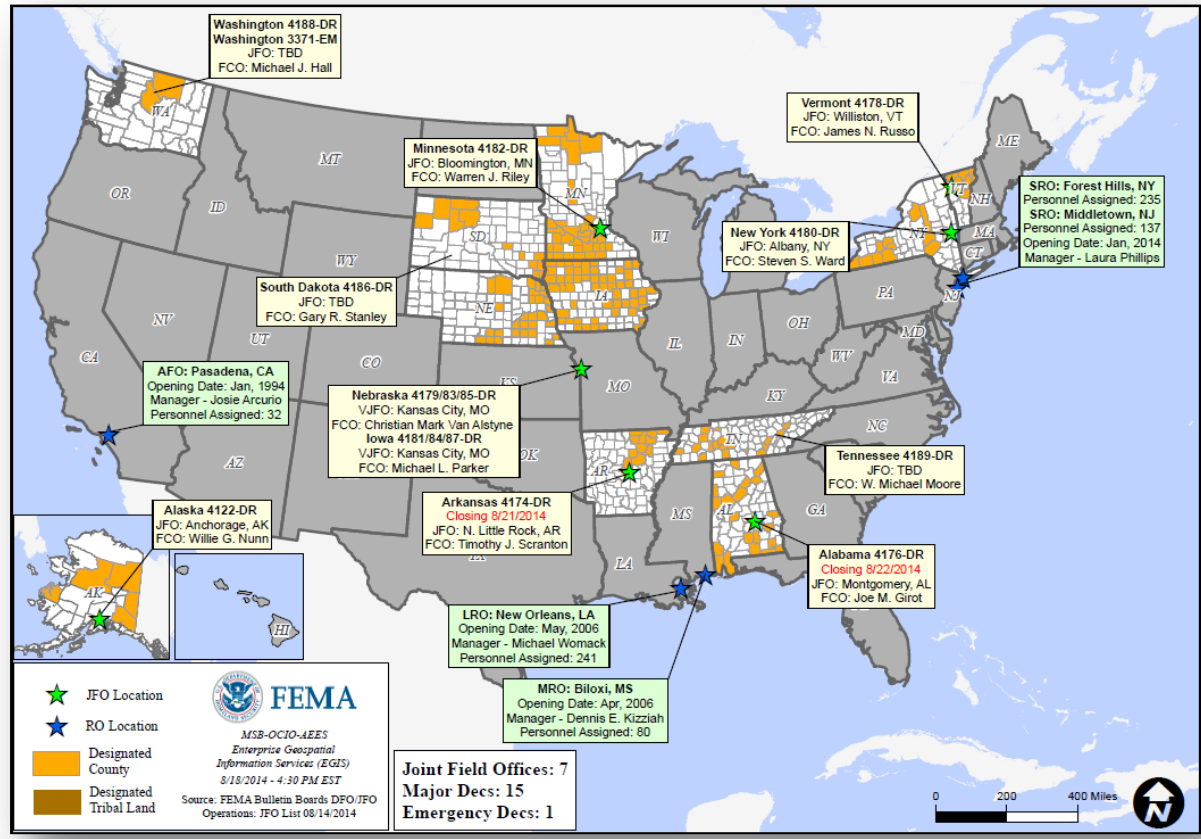
Fire Name (County)	FMAG #	Acres Burned	% Contained Est. Containment date	Evacuations (Residents)	Structures Threatened	Structures Destroyed	Fatalities / Injuries
California (2)							
Junction Fire (Madera County)	Approved August 19, 2014 5074-FM-CA	1,200	0%	Mandatory	500 (300 homes)	3 (2 homes)	0 / 2
Way Fire (Kern County)	Approved August 19, 2014 5075-FM-CA	3,000	0%	Mandatory	1,650 (1,300 homes)	6 (all homes)	0 / 0

Disaster Requests & Declarations



Declaration Requests in Process		Requests APPROVED (since last report)	Requests DENIED (since last report)
1	Date Requested	0	0
ND – DR Severe Storms and Flooding	August 8, 2014		

Open Field Offices as of August 19, 2014

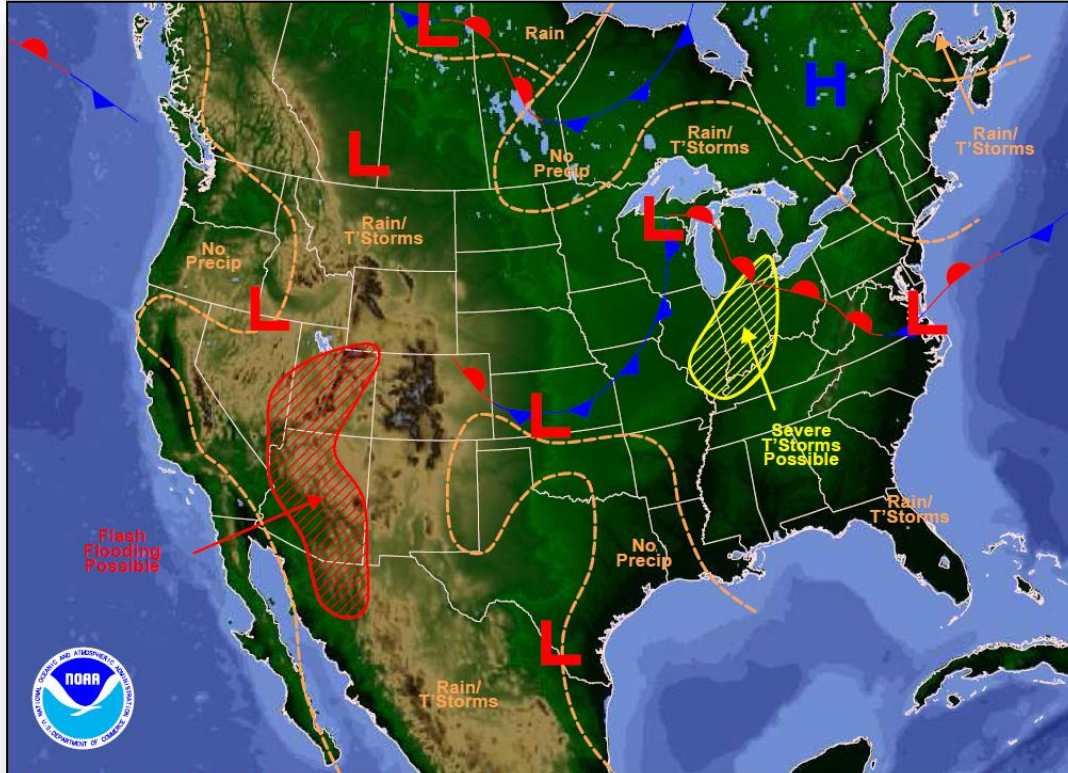


Joint Preliminary Damage Assessments



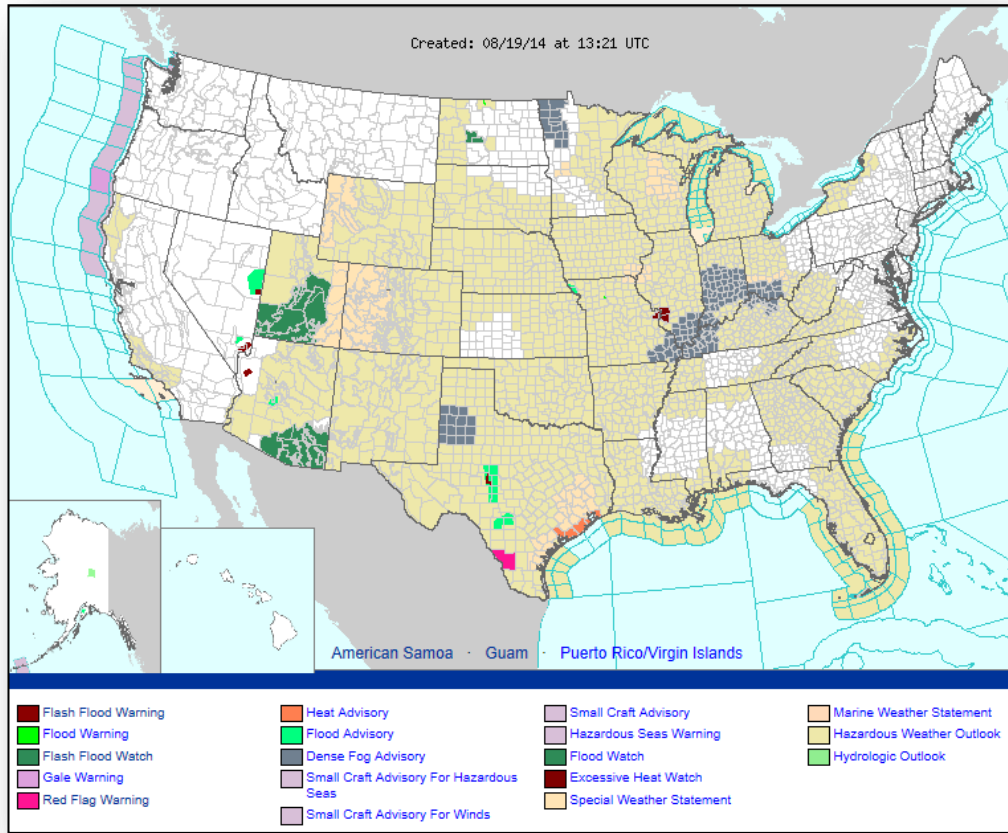
Region	State / Location	Event	IA/PA	Number of Counties		Start – End
				Requested	Complete	
II	New York	Heavy Rainfall & Flooding August 12-13, 2014	PA	1	0	TBD
			IA	1	0	TBD
IX	Hawaii	Hurricane Iselle August 2014	IA	1	0	8/15 - TBD

National Weather Forecast



Weather Forecast for Tue, Aug 19, 2014, issued 2:53 AM EDT
DOC/NOAA/NWS/NCEP/Weather Prediction Center
Prepared by McCreynolds based on WPC, SPC and NHC forecasts

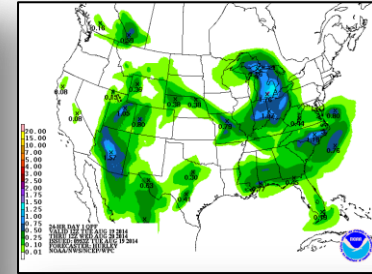
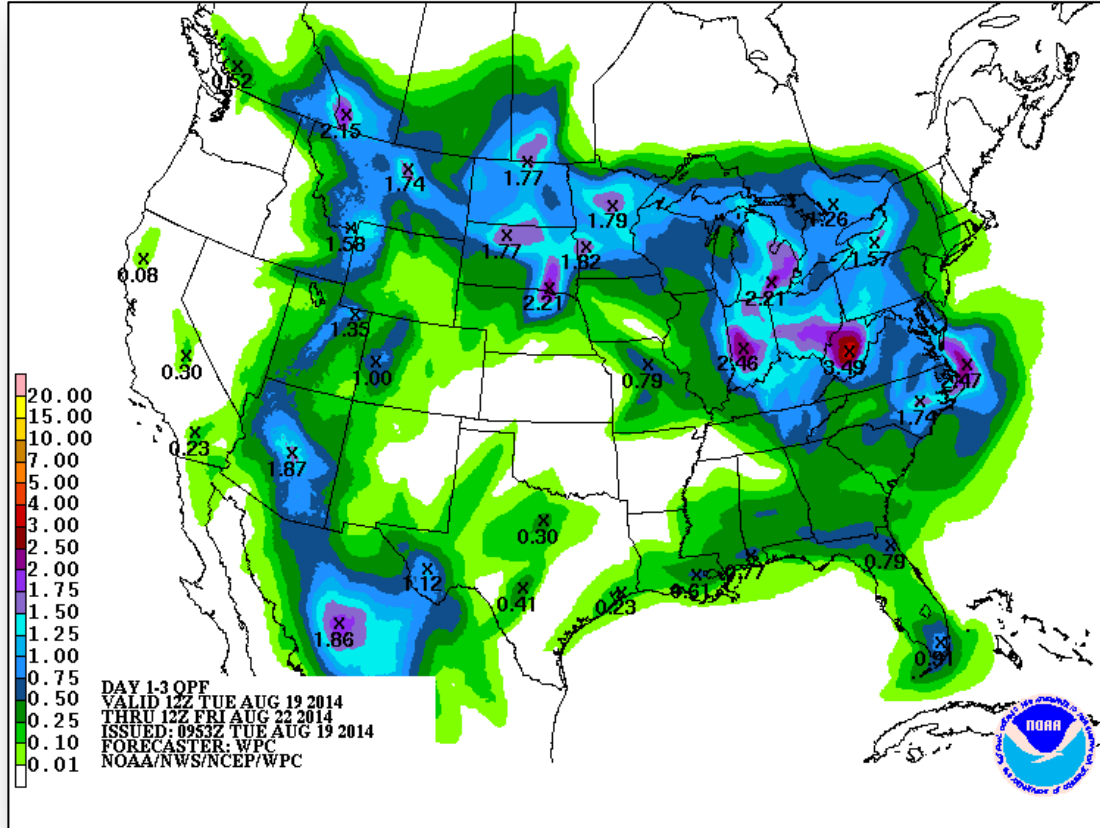
Active Watches/Warnings



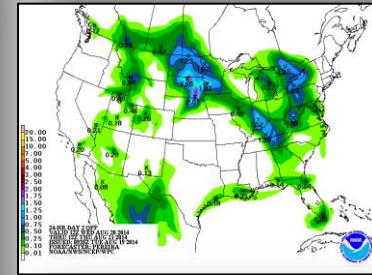
Precipitation Forecast – 3 Day



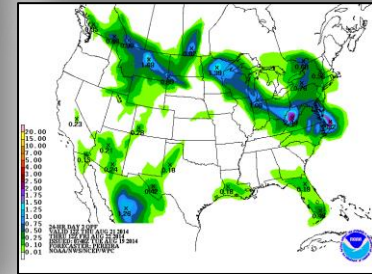
FEMA



Day 1



Day 2

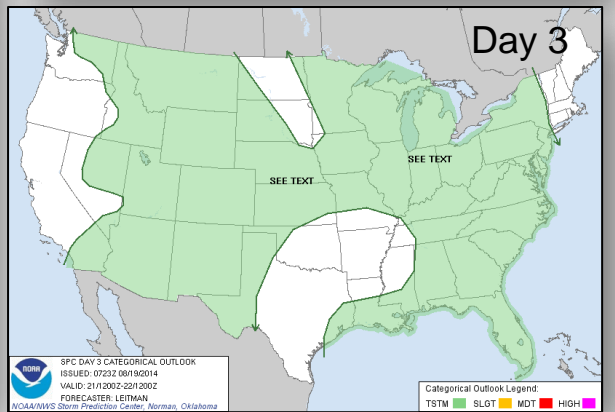
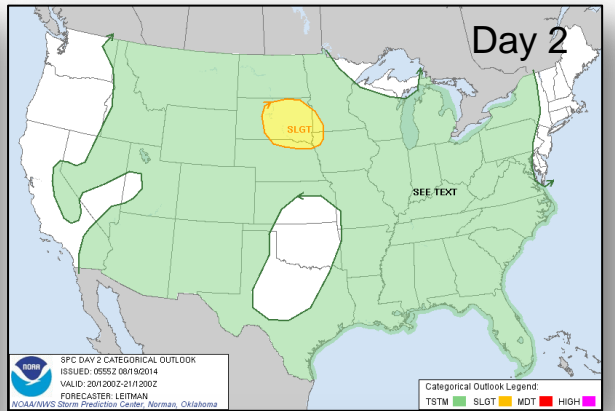
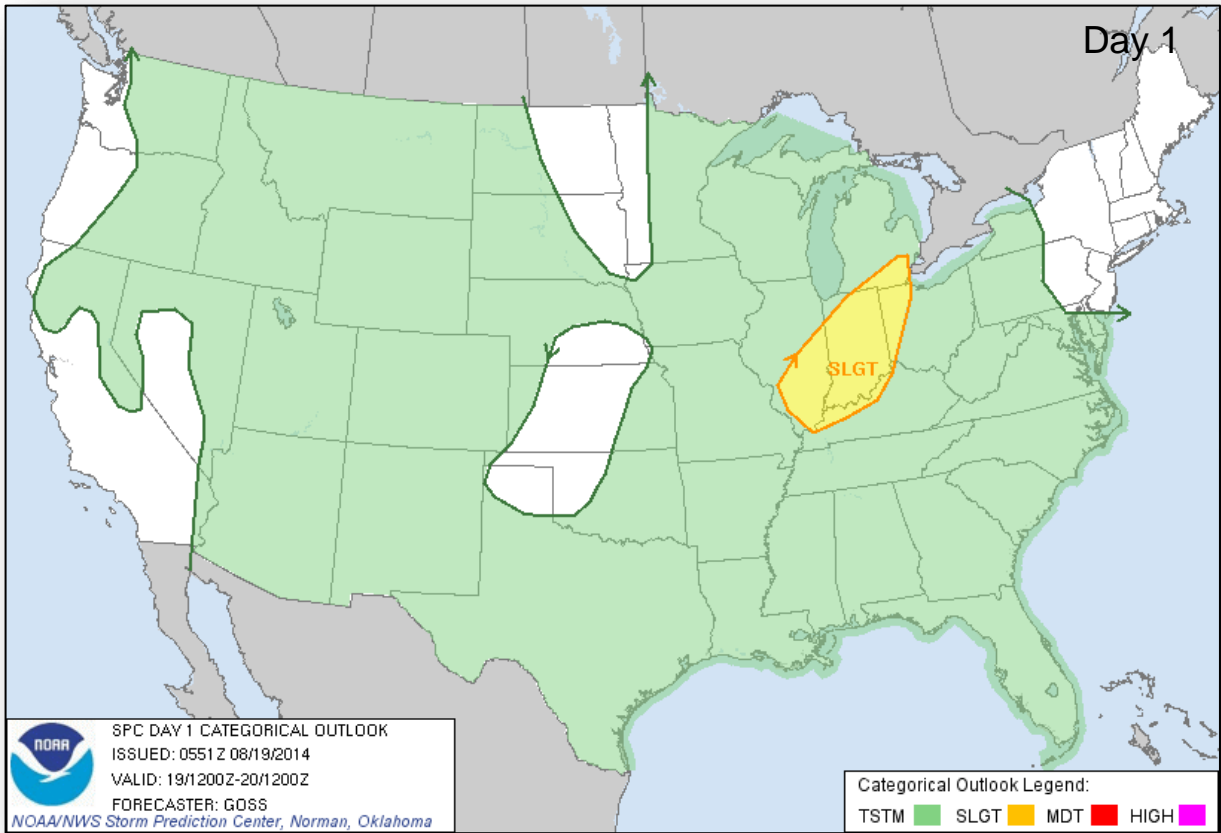


Day 3

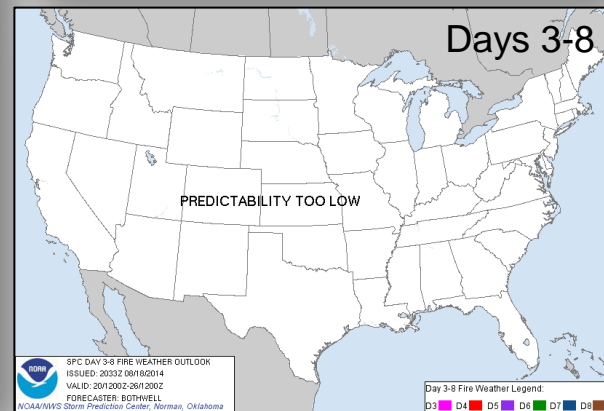
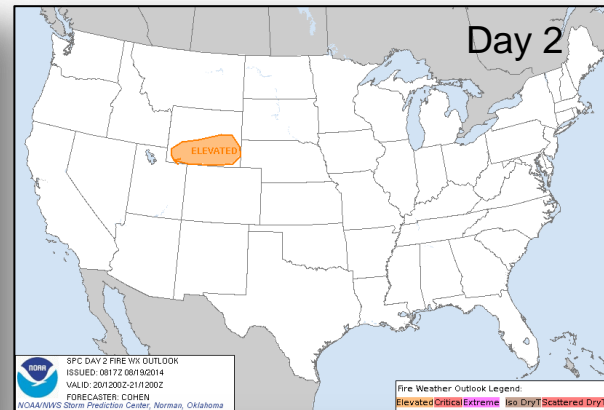
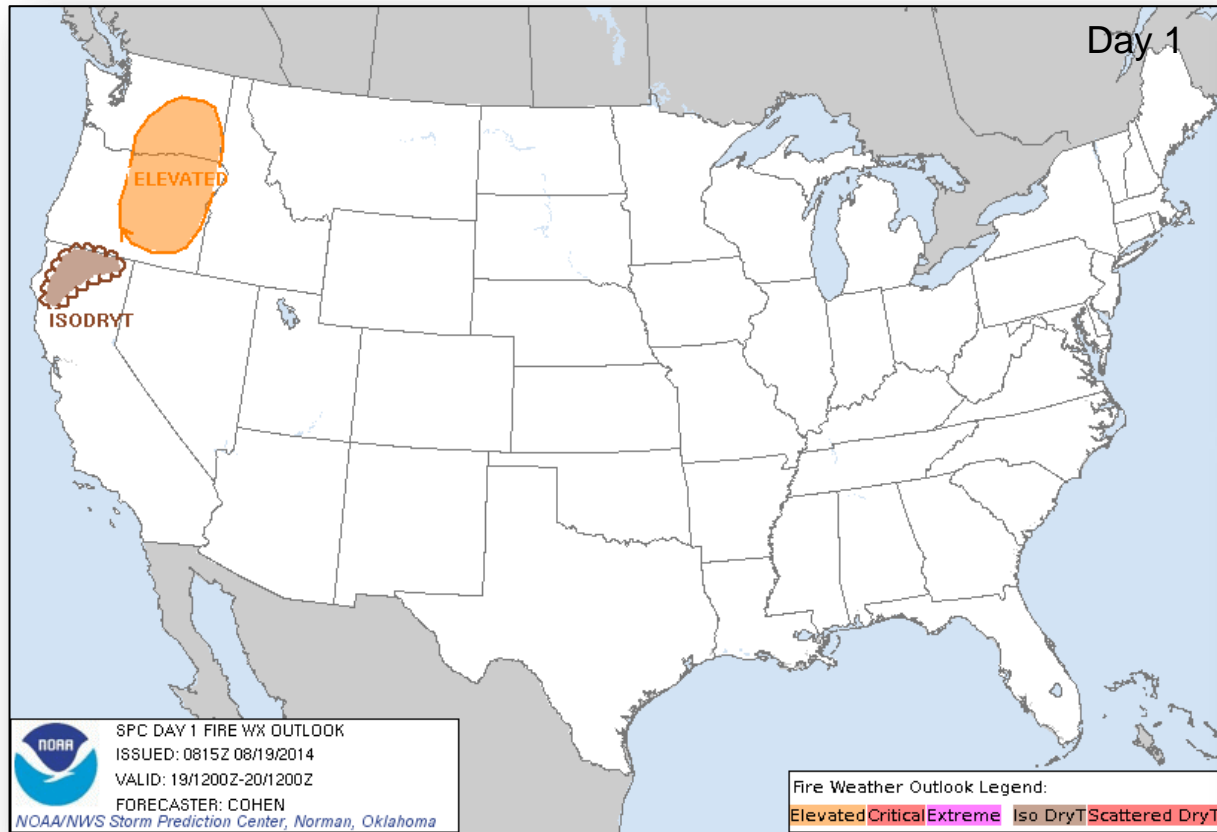
River Forecast



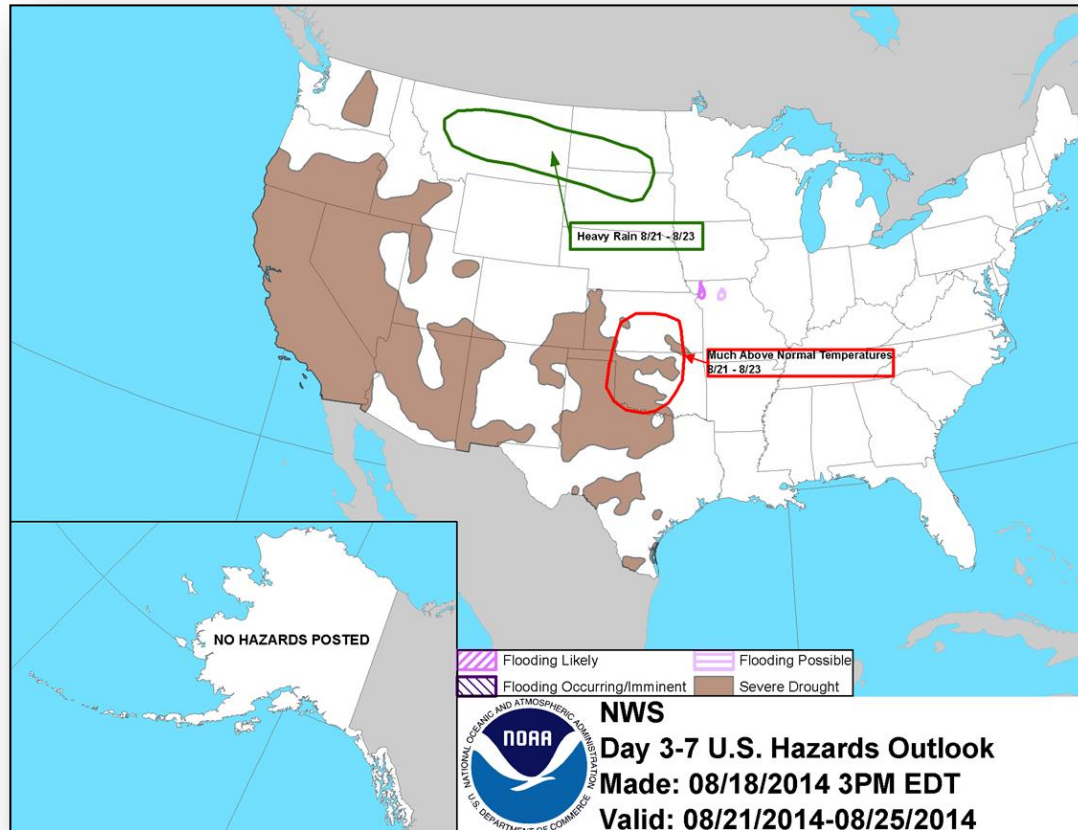
Convective Outlook, Days 1 – 3



Fire Weather Outlook, Days 1 – 8



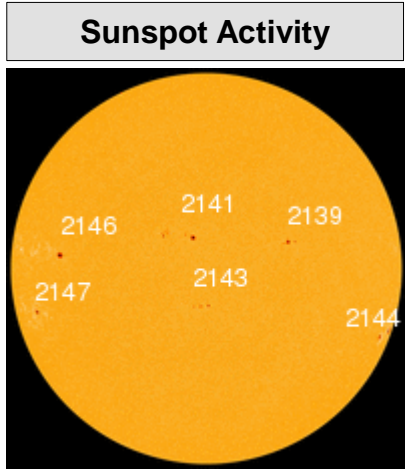
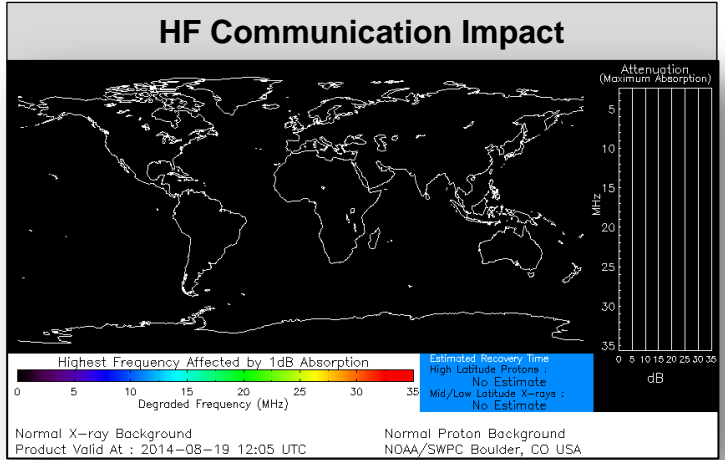
Hazard Outlook: August 21 – 25



Space Weather



NOAA Scales Activity (Range: 1/minor to 5/extreme)	Past 24 Hours	Current	Next 24 Hours
Space Weather Activity:	None	None	Minor
• Geomagnetic Storms	None	None	G1
• Solar Radiation Storms	None	None	None
• Radio Blackouts	None	None	None

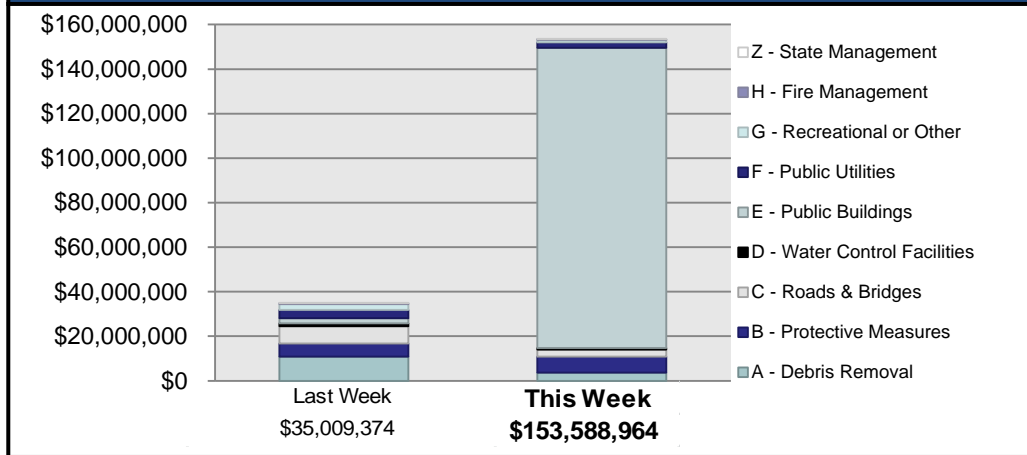


Public Assistance Grant Program



PA Project Worksheets Obligated in past week, as of 8/18/2014 at 1400 EDT										
PA Category	Emergency Work		Permanent Work					H - Fire Management	Z - State Management	Total
	A - Debris Removal	B - Protective Measures	C - Roads & Bridges	D - Water Control Facilities	E - Public Buildings	F - Public Utilities	G - Recreational or Other			
Number Of PWs Obligated	7	39	34	1	15	5	7	3	4	115
Federal Share Obligated	\$3,716,157	\$7,106,025	\$3,216,820	\$766,518	\$134,772,289	\$2,390,786	\$1,128,399	\$328,993	\$162,976	\$153,588,964

Public Assistance Obligated per Category In the Past 2 Weeks – 8/4/2014 through 8/18/2014



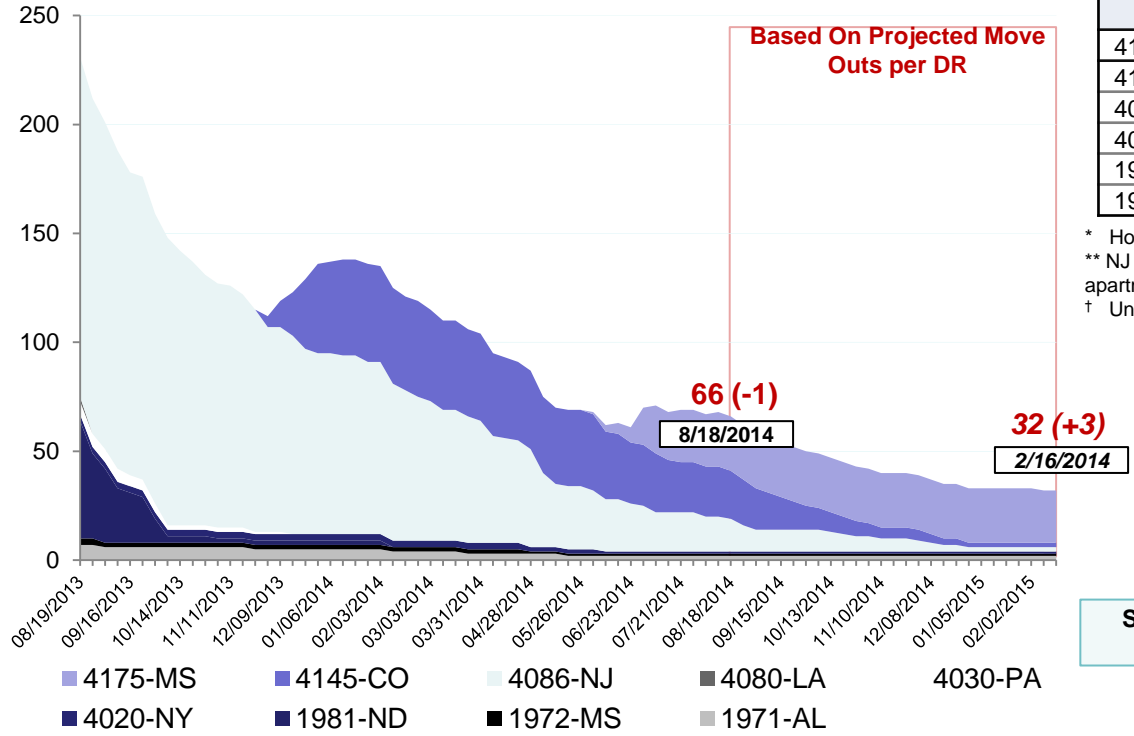
PA Highlights

- On 8/14 New York Health and Hospitals was obligated approximately \$117 million in Public Assistance under a Category E grant for repairs to Bellevue Hospital

Direct Housing

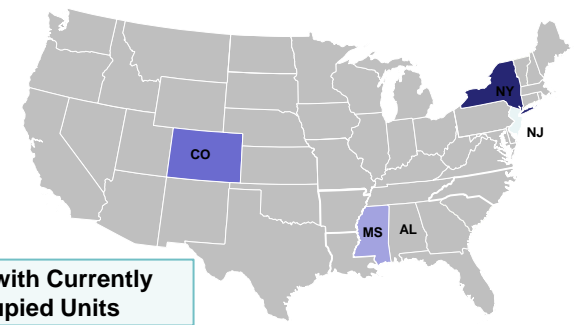


Total Households in FEMA Direct Housing per State
 Past Year per Week, 8/19/2013 – 8/18/2014, Projected to 2/16/2015
 There are currently **66** Households in Temporary Housing



DR	IA Declaration Date	Program End Date	Current # of Households in Direct Housing (Weekly Change)
4175-MS	04/30/2014	10/30/2015	25 (0)
4145-CO	09/14/2013	03/14/2015	22 (0)
4086-NJ* **	10/30/2012	08/31/2014	15 (-1)
4020-NY†	08/31/2011	06/01/2013	1 (0)
1972-MS†	04/29/2011	10/29/2012	1 (0)
1971-AL†	04/28/2011	10/28/2012	2 (0)

* Housing Program has been extended
 ** NJ - Includes 7 (-1) households in MHUs; 8 (0) households in Ft Monmouth apartments
 † Units are under authority of Department of Justice



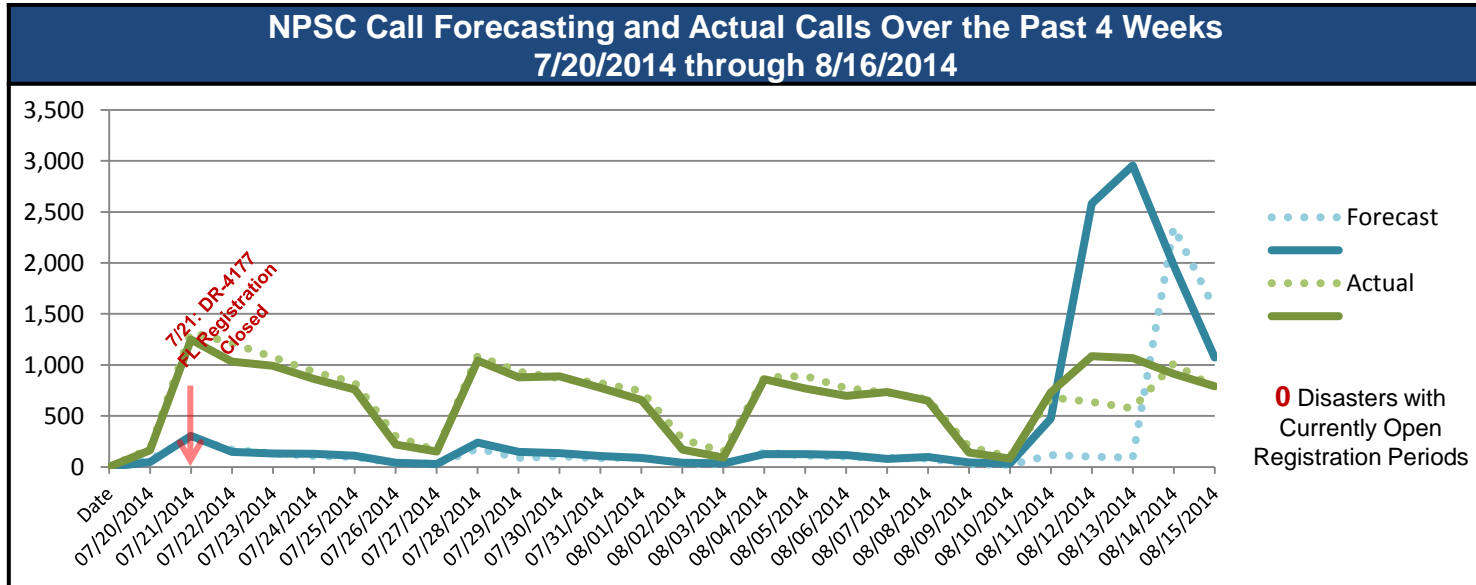
States with Currently Occupied Units

NPSC Activity



FEMA

NPSC Call Activity in the Past Week 8/10/2014 through 8/16/2014					
Call Type	Projected Calls	Actual Calls	Average Answer Time	Maximum Answer Time	Minimum Answer Time
Registration Intake	4,764	9,500	:12	:36	:07
Helpline	4,125	4,894	:12	:49	:07
All Calls	8,889	14,394	:12	:49	:07

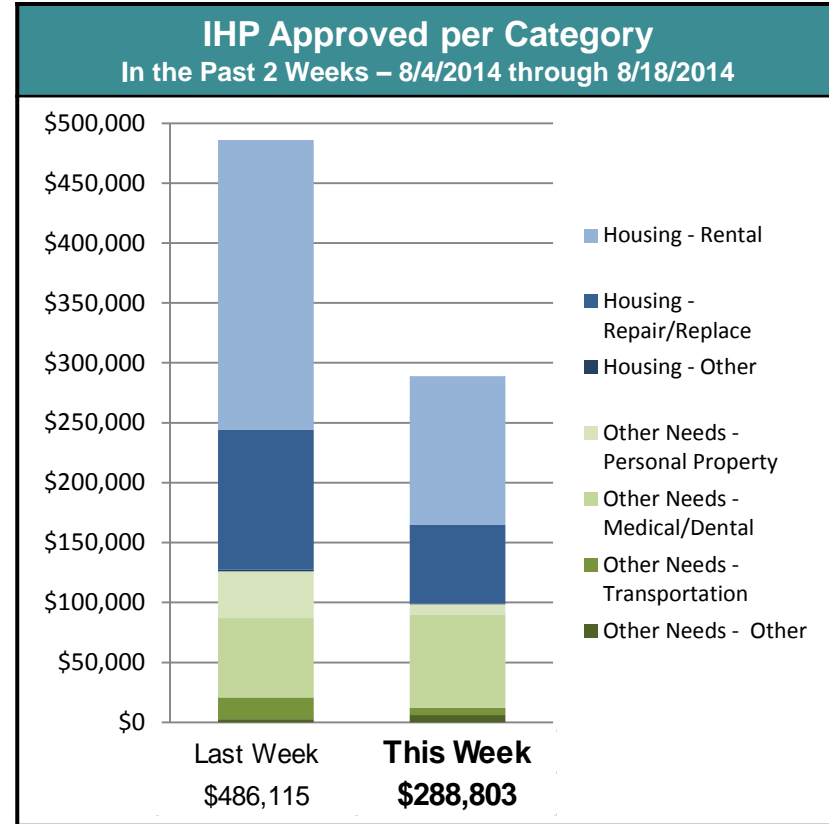


Individual Assistance Activity



Individuals and Households Program Activity in past week, as of 8/18/2014 at 1500 EDT		
Assistance Type	Applicants Approved	Amount Approved
Other IHP Active		
11 Declarations IHP Programmatically Open – Closed Registration*		
Housing Assistance	91	\$190,214
Other Needs Assistance	49	\$98,589
Total IHP	\$288,803	
Grand Total	\$288,803	

* There are currently no IA Declarations with Open Registration Periods



FEMA Readiness – Deployable Teams/Assets



Deployable Teams/Assets									
Resource	Status	Total	Available		Partially Available	Not Available	Detailed Deployed Activated	Comments	Rating Criterion
FCO	Green	39	15	38%	0	1	23		OFDC Readiness: FCO Green Yellow Red Type 1 3+ 2 1 Type 2 4+ 3 2 Type 3 4 3 2 FDRC 3 2 1
FDRC		10	5	50%	0	0	5		
US&R	Green	28	26	93%	1	1	0	<ul style="list-style-type: none"> NM-TF1 (Red for personnel shortages) CA-TF1 (Yellow for logistics & management) 	<ul style="list-style-type: none"> Green = Available/FMC Yellow = Available/PMC Red = Out-of-Service Blue = Assigned/Deployed
National IMAT	Green	3	3	100%	0	0	0		<ul style="list-style-type: none"> Green: 3 avail Yellow: 1-2 avail Red: 0 avail (<i>Individual N-IMAT red if 50% of Section Chiefs and/or Team Leader is unavailable for deployment.</i>)
Regional IMAT	Yellow	13	4	31%	3	4	2	<u>Partially Mission Capable (PMC):</u> <ul style="list-style-type: none"> Region II, III, VI (Team 1) <u>Not Mission Capable (NMC):</u> <ul style="list-style-type: none"> Region V, VI (Team 2), VII, IX <u>Deployed</u> <ul style="list-style-type: none"> Region X to WA Region VIII to SD 	<ul style="list-style-type: none"> Green: 7 or more avail Yellow: 4 - 6 teams available Red: > 8 teams deployed/unavailable <p><i>R-IMAT also red if TL Ops/Log Chief is unavailable and has no qualified replacement.</i></p>
MCOV	Green	55	48	87%	0	7	0		<ul style="list-style-type: none"> Green = 80 – 100% avail Yellow = 60 – 79% avail Red = 59% or below avail Readiness remains 95%

FEMA Readiness – National/Regional Teams



National/Regional Teams									
Resource	Status	Total	Available		Partially Available	Not Available	Deployed/ Activated	Comments	Rating Criterion
NWC		5	5	100%	0	0	24/7	Enhanced Watch (UC UCG)	<ul style="list-style-type: none"> • Green = FMC • Yellow = PMC • Red = NMC
NRCC		2	344	89%	0	44	Not Activated		
HLT		1	N/A	N/A	0	1	Activated	Activated	
DEST							Not Activated		
RRCCs		10	10	100%	0	0	0		
RWCs/MOCs		10	10	100%	0	0	24/7		



FEMA

FEMA's mission is to support our citizens and first responders to ensure that as a nation we work together to build, sustain, and improve our capability to prepare for, protect against, respond to, recover from, and mitigate all hazards.