



# **FEMA**

## **Daily Operations Briefing**

**Wednesday, August 20, 2014**

**8:30 a.m. EDT**

# Significant Activity: August 19 – 20



**Significant Events:** Wildfire Activity – CA

## **Tropical Activity:**

- Atlantic – Disturbance 1 (Medium; 30%); Disturbance 2 (Low; 10%)
- Eastern Pacific – Tropical Storm Karina; Tropical Storm Lowell; Disturbance 1 (Medium; 40%)
- Central Pacific – Disturbance 1 (Low; 10%)

## **Significant Weather:**

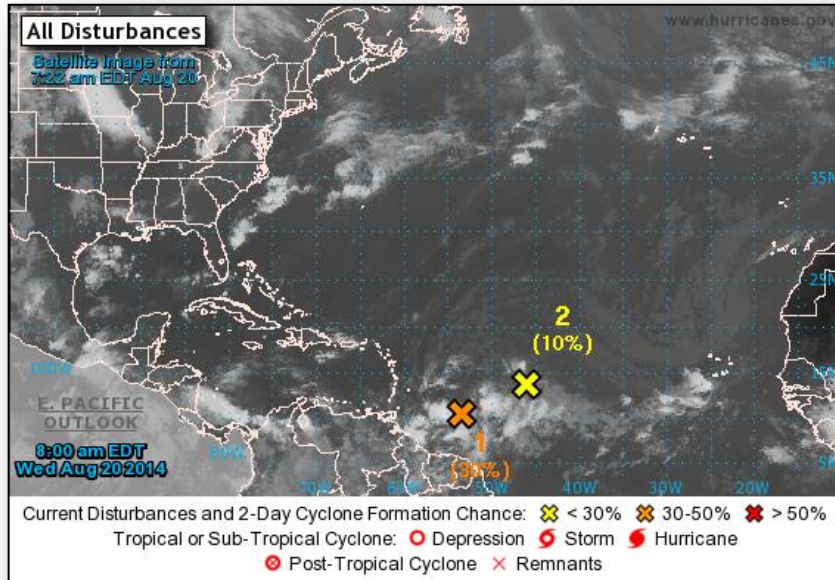
- Slight risk for severe thunderstorms – Northern/Central Plains to Middle/Upper Mississippi Valley
- Flash flooding possible – Northern/Central Plains to Upper Mississippi Valley; Mid-Atlantic to Great Lakes
- Elevated Fire Weather: WA & OR
- Red Flag Warnings: TX
- Space Weather – Past / Next 24 hours: Moderate / G2 geomagnetic storms occurred and are likely

**FEMA Readiness:** Region II RWC will increase to an Enhanced Watch

## **Declaration Activity:**

- Major Disaster Declaration approved for North Dakota (FEMA-4190-DR)
- Amendment No. 1 to FEMA-4187-DR-IA

# 2-Day Tropical Outlook – Atlantic



## **Disturbance 1 (as of 8:00 a.m. EDT)**

- Located several hundred miles E of southern Leeward Islands
- Moving WNW at 10-15 mph
- Gradual development possible next few days
- Formation chance:
  - Next 48 hours: Medium (30%)
  - Next 5 days: Medium (50%)

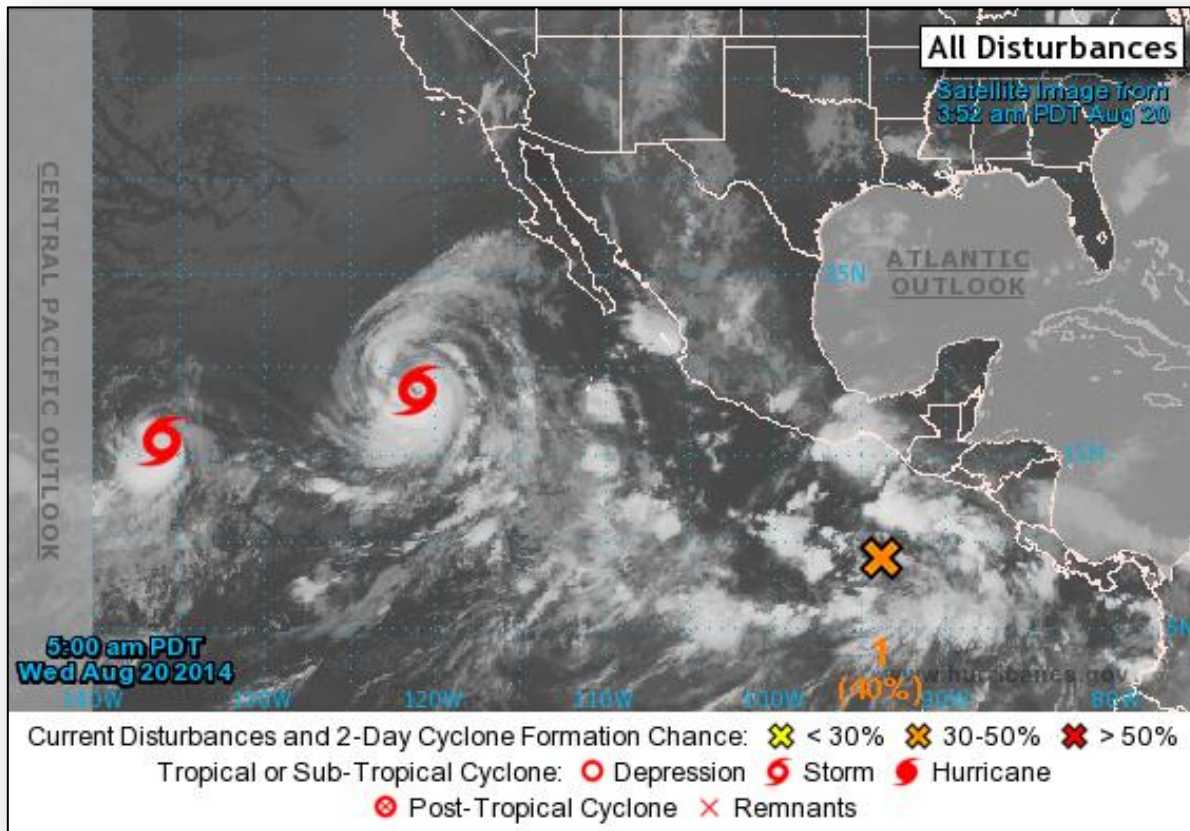
## **Disturbance 2 (as of 8:00 a.m. EDT)**

- Located 1,000 miles east of Lesser Antilles
- Moving WNW at 10 mph
- Any development should be slow to occur next day or two; after that, development not anticipated as it begins to interact with disturbance to its west
- Formation chance:
  - Next 48 hours: Low (10%)
  - Next 5 days: Low (10%)

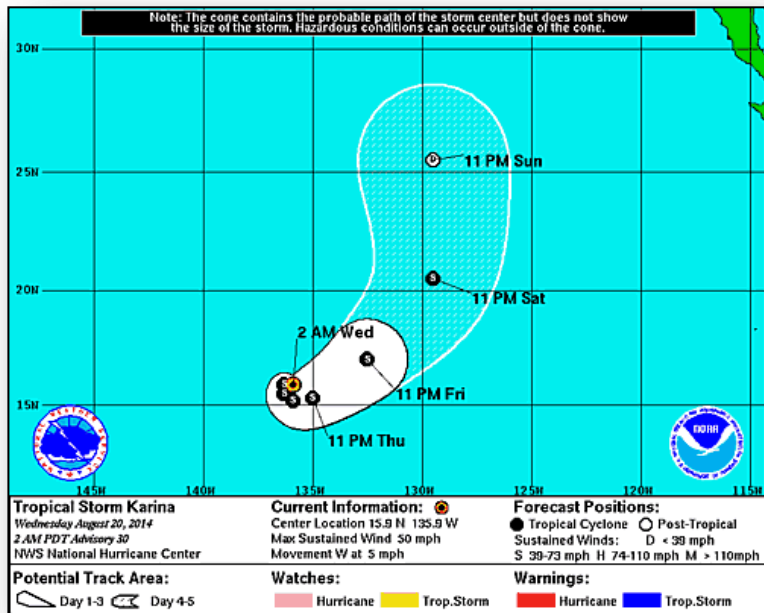
# 2-Day Tropical Outlook – Eastern Pacific



FEMA



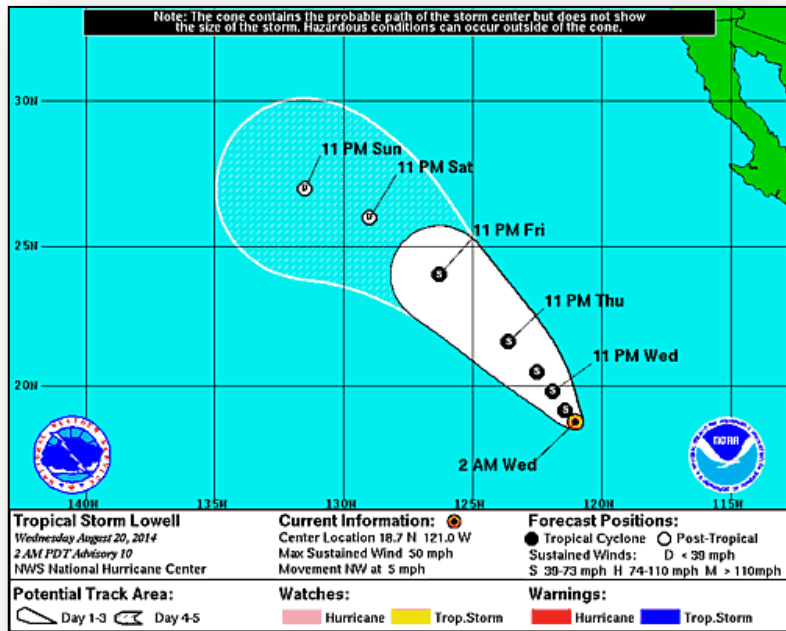
# Tropical Storm Karina – Eastern Pacific



## Tropical Storm Karina (as of 5:00 a.m. EDT)

- Located 1,290 miles E of Hilo, Hawaii
- Moving W at 5 mph
- Expected to slow down and begin meandering later today before moving a little faster towards E by Thursday night
- Maximum sustained winds 50 mph
- Little change in strength forecast next 48 hours
- Tropical storm force winds extend 70 miles
- No coastal watches or warnings in effect

# Tropical Storm Lowell – Eastern Pacific

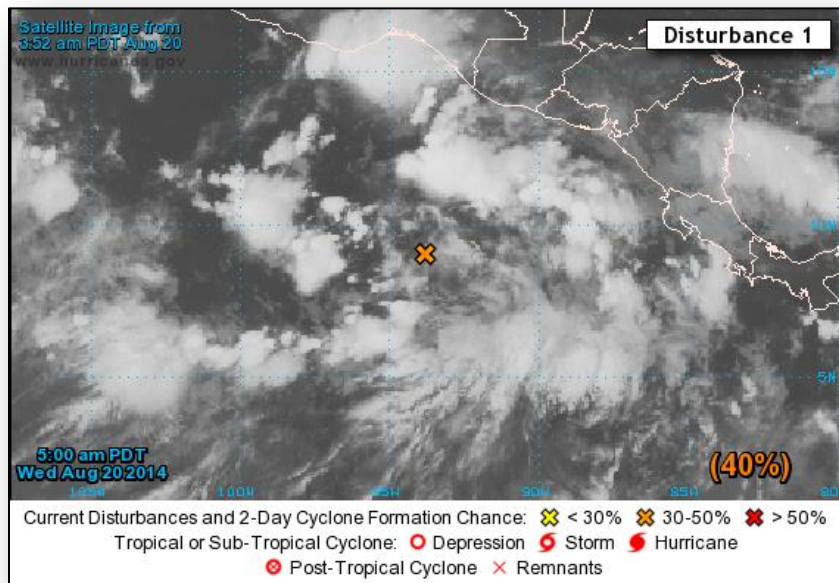


## Tropical Storm Lowell (as of 5:00 a.m. EDT)

- Located 775 miles WSW of southern tip of Baja California, Mexico
- Moving NW at 5 mph
- A slow NW to NNW motion expected next day or so; increase in forward speed expected by Friday
- Maximum sustained winds 50 mph
- Some strengthening possible next day or so
- Tropical storm force winds extend 205 miles
- No coastal watches or warnings in effect



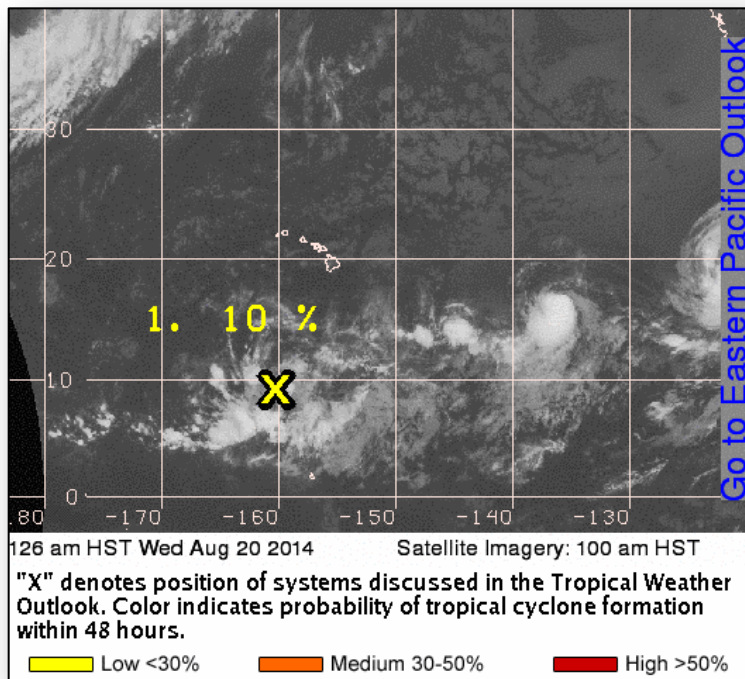
# 2-Day Tropical Outlook – Eastern Pacific



## **Disturbance 1 (as of 8:00 a.m. EDT)**

- Located several hundred miles S of Gulf of Tehuantepec
- Moving WNW at 10 mph
- Conditions forecast to be conducive for tropical depression to form by end of week
- Formation chance:
  - Next 48 hours: Medium (40%)
  - Next 5 days: High (80%)

# 2-Day Tropical Outlook – Central Pacific



## Disturbance 1 (as of 8:00 a.m. EDT)

- Located 850 miles S of Honolulu, Hawaii
- Remaining nearly stationary
- Little change in organization past 24 hours
- Formation chance next 48 hours: Low (10%)



# FMAG Requests and Declarations



Action (since last report)			Total	FMAG No. and State	
Requests DENIED			0		
Requests APPROVED			2	Junction Fire, FEMA-5074-FM-CA Way Fire, FEMA-5075-FM-CA	
Approved FMAG Data					
Year	Current YTD	MTD	Monthly Average	Cumulative Acres Burned YTD	Cumulative Denied FMAGs YTD
2014	25	10	12	130,208	1
Year	Total Previous FY	++ Yearly Average		Total Acres Burned Previous Year	Total Denied FMAGs Previous Year
2013	29	64		374,417	8
* Reflects the 3-year average for current month/ ** Reflects 3-year total average					

# Wildfire Summary



Fire Name (County)	FMAG #	Acres Burned	% Contained Est. Containment date	Evacuations (Residents)	Structures Threatened	Structures Destroyed	Fatalities / Injuries
California (2)							
Junction Fire (Madera County)	Approved August 19, 2014 5074-FM-CA	612 (-588)	35% (+35)	Mandatory	2,203(+1,703) (2,000 homes)	9 (+6) (8 homes)	0 / 2
Way Fire (Kern County)	Approved August 19, 2014 5075-FM-CA	3,367 (+367)	5% (+5)	Mandatory	1,500 (-150) (all homes)	8 (+2) (all homes)	0 / 0

# Disaster Requests & Declarations



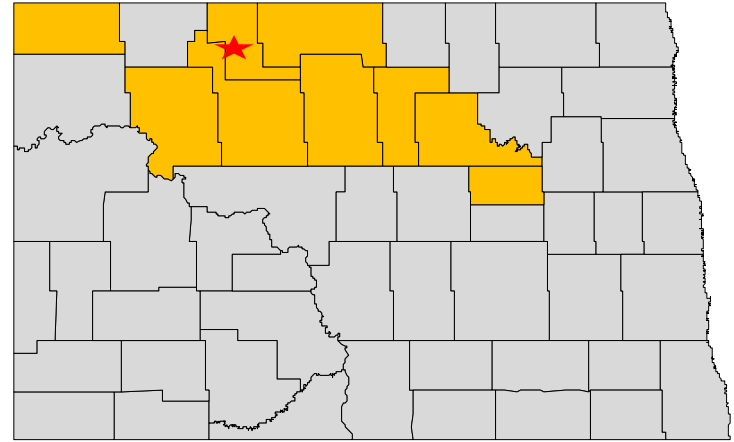
Declaration Requests in Process		Requests APPROVED (since last report)	Requests DENIED (since last report)
0	Date Requested	1	0
ND – DR Severe Storms and Flooding	August 8, 2014	Declared August 19, 2014	

# Major Disaster Declaration – North Dakota




## **FEMA-4190-DR-ND**

- Major Disaster Declaration approved August 19, 2014 for State of North Dakota
- For severe storms & flooding that occurred June 25 to July 1, 2014
- Provides:
  - Public Assistance for 9 counties and the Standing Rock Indian Reservation
  - Hazard Mitigation statewide
- FCO is Lee K. dePalo



 Declared PA counties

 Standing Rock Sioux Indian Reservation

# Disaster Amendments

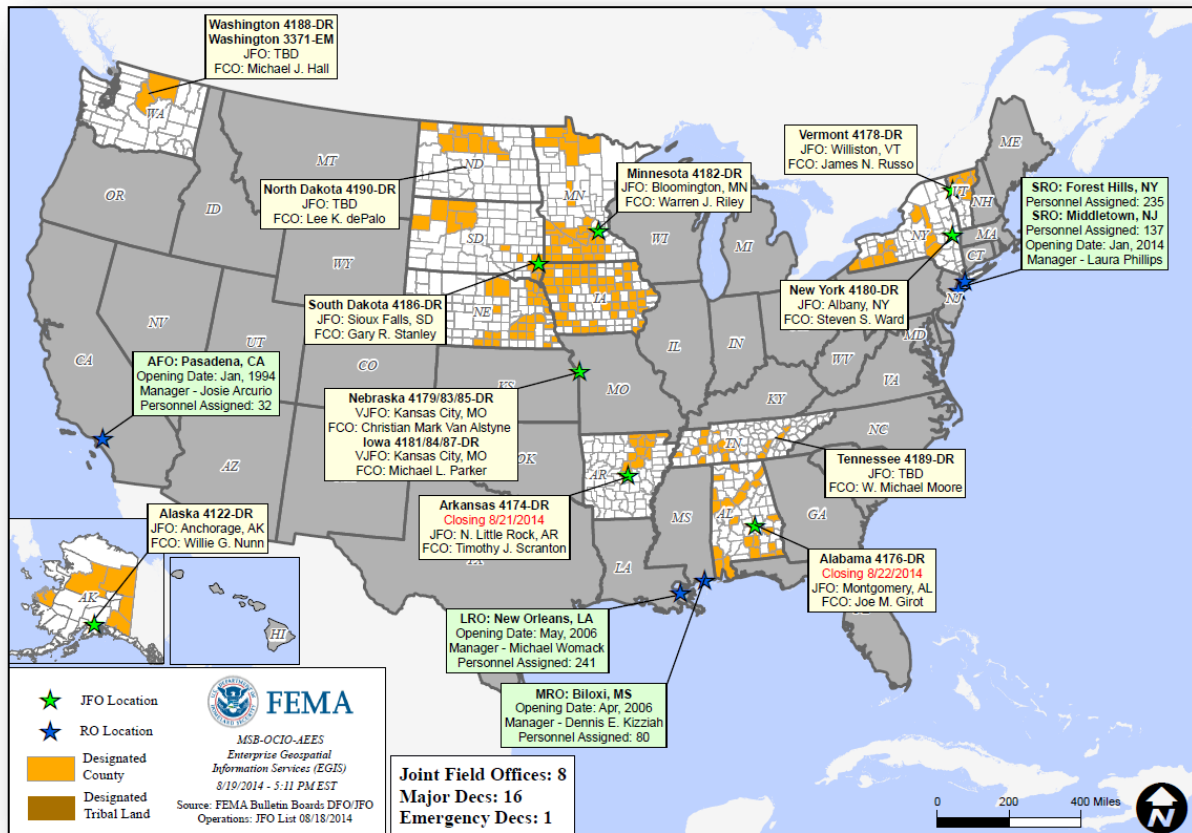


Amendment	Effective Date	Action
Amendment No. 1 to FEMA-4187-DR-IA	August 19, 2014	Adds 2 counties for Public Assistance

# Open Field Offices as of August 20, 2014



FEMA





# Joint Preliminary Damage Assessments

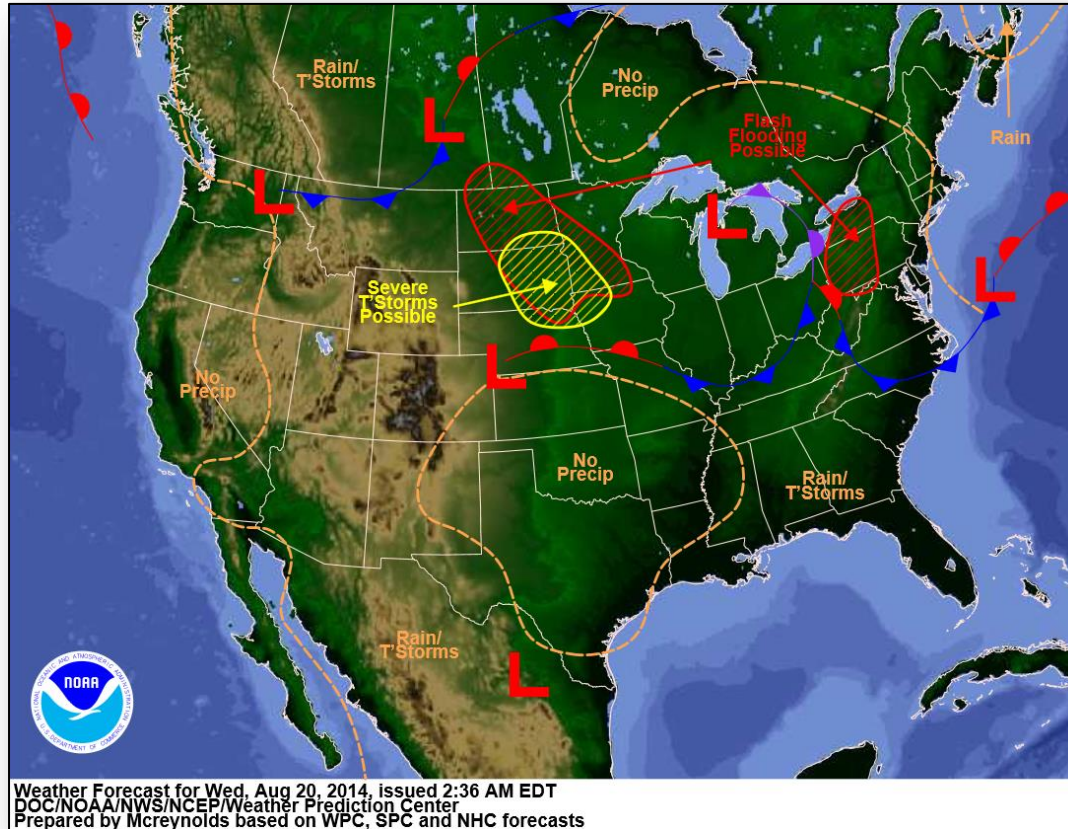


Region	State / Location	Event	IA/PA	Number of Counties		Start – End
				Requested	Complete	
II	New York	Heavy Rainfall & Flooding August 12-13, 2014	PA	1	0	TBD
			IA	1	0	TBD
IX	Hawaii	Hurricane Iselle August 2014	IA	1	0	8/15 – TBD

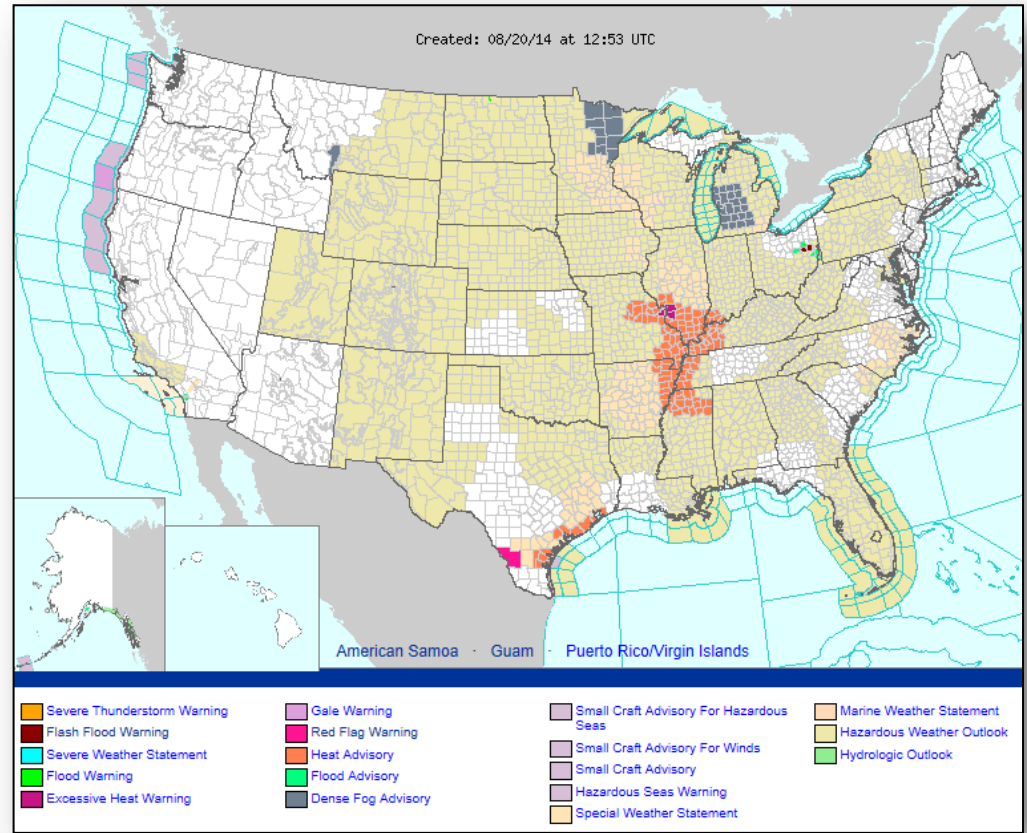
# National Weather Forecast



FEMA



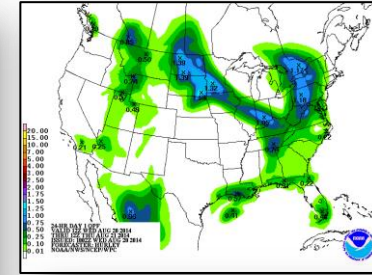
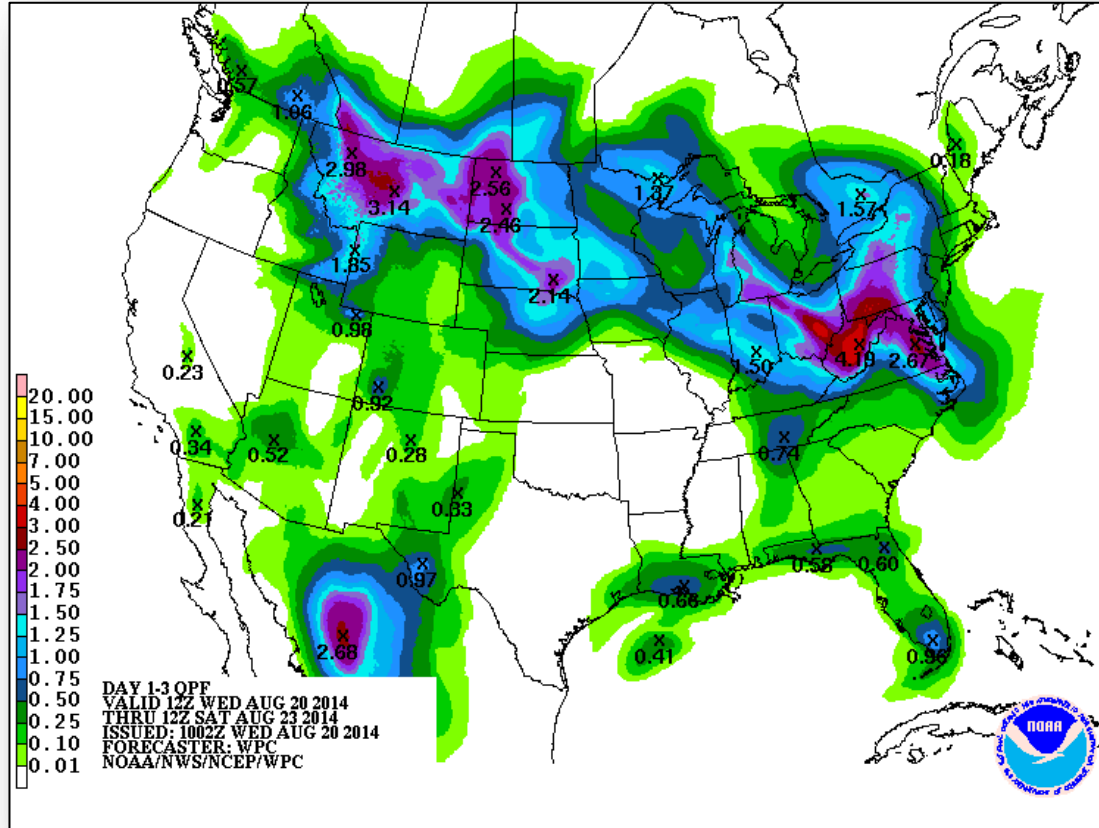
# Active Watches/Warnings



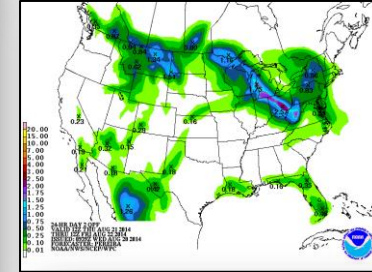
# Precipitation Forecast – 3 Day



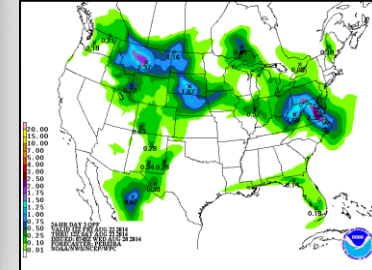
FEMA



Day 1



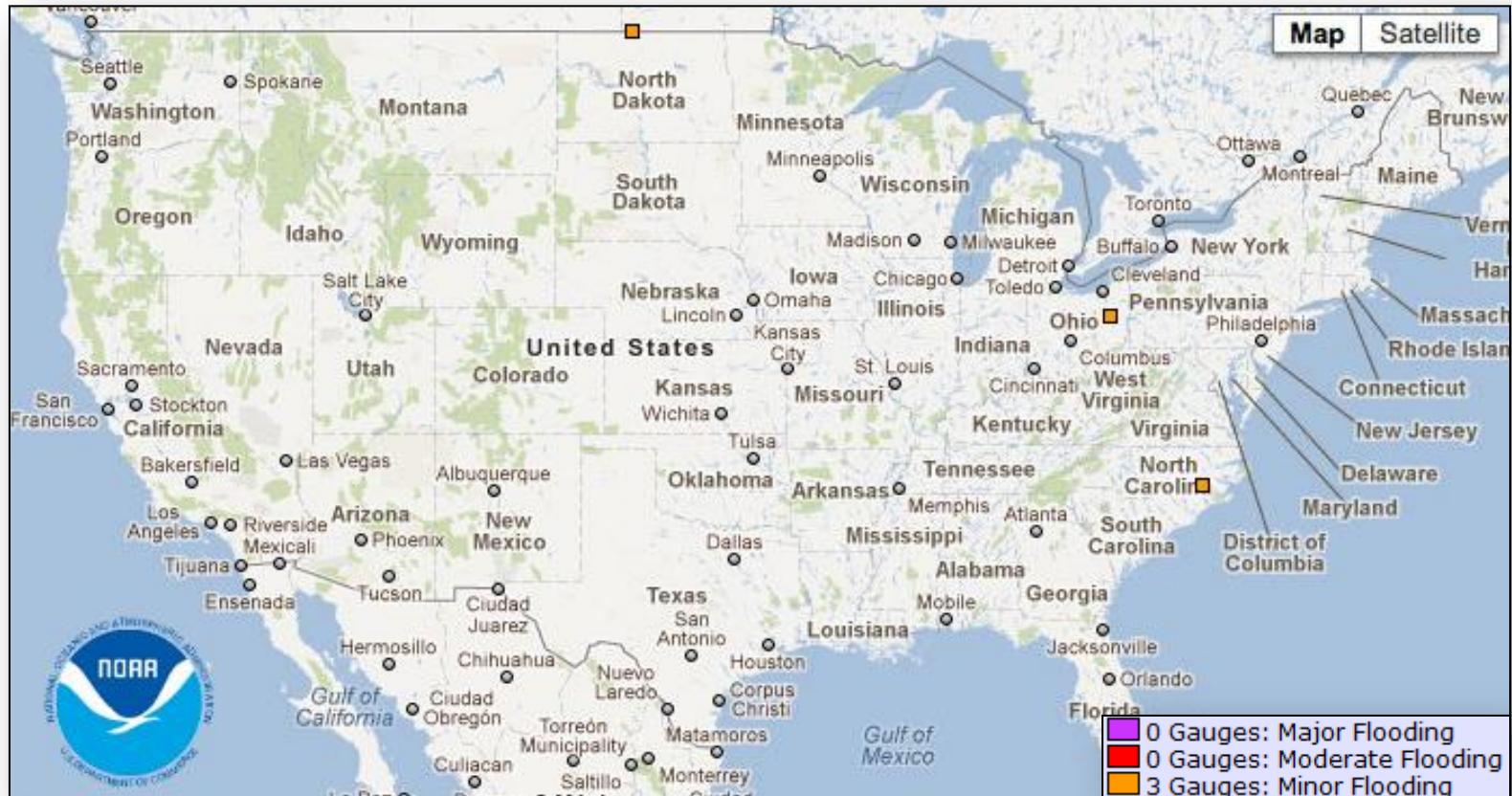
Day 2



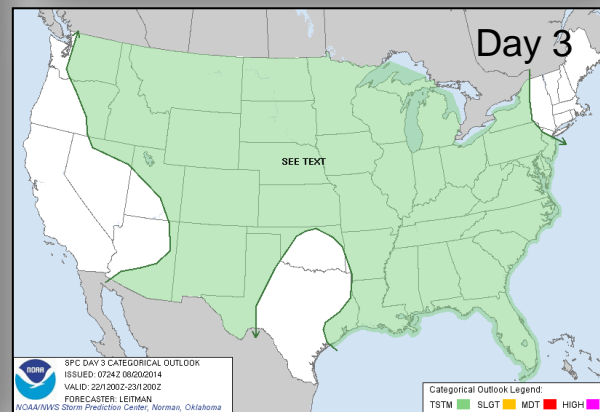
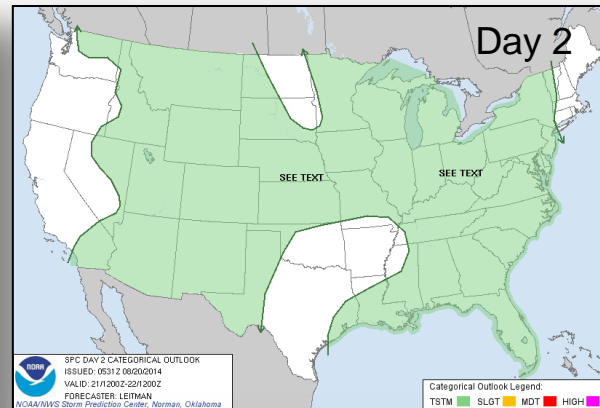
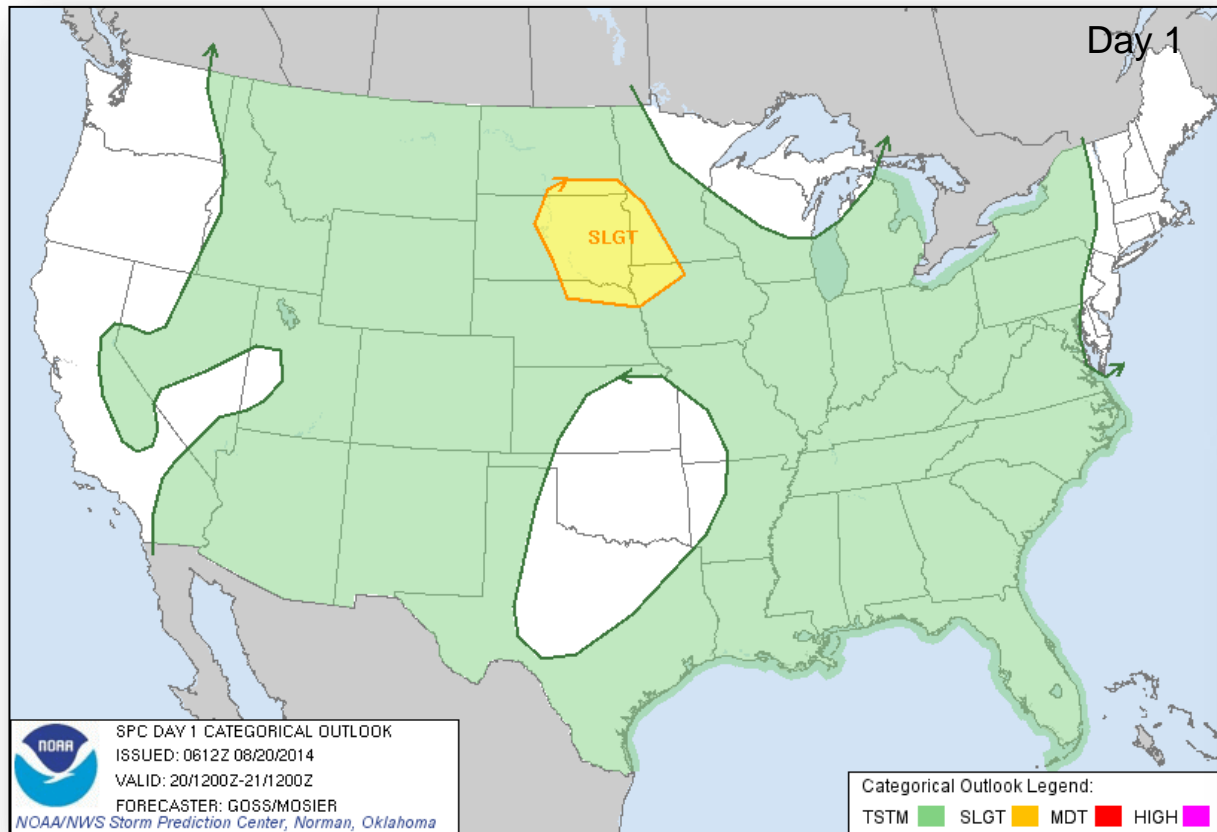
Day 3



# River Forecast

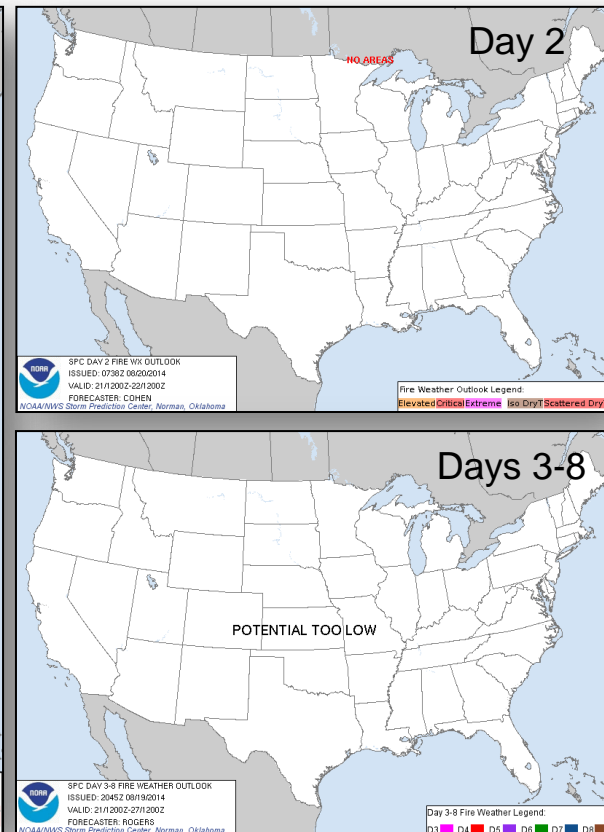
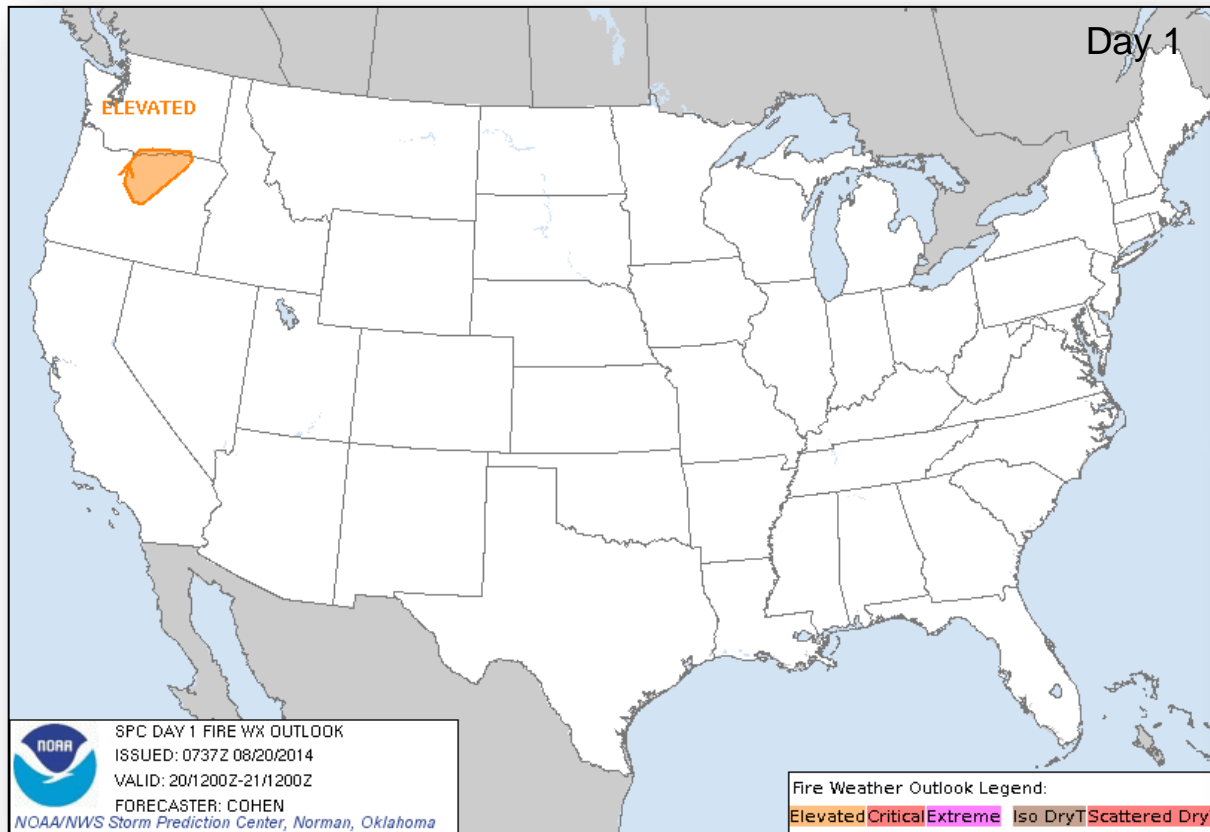


# Convective Outlook, Days 1 – 3





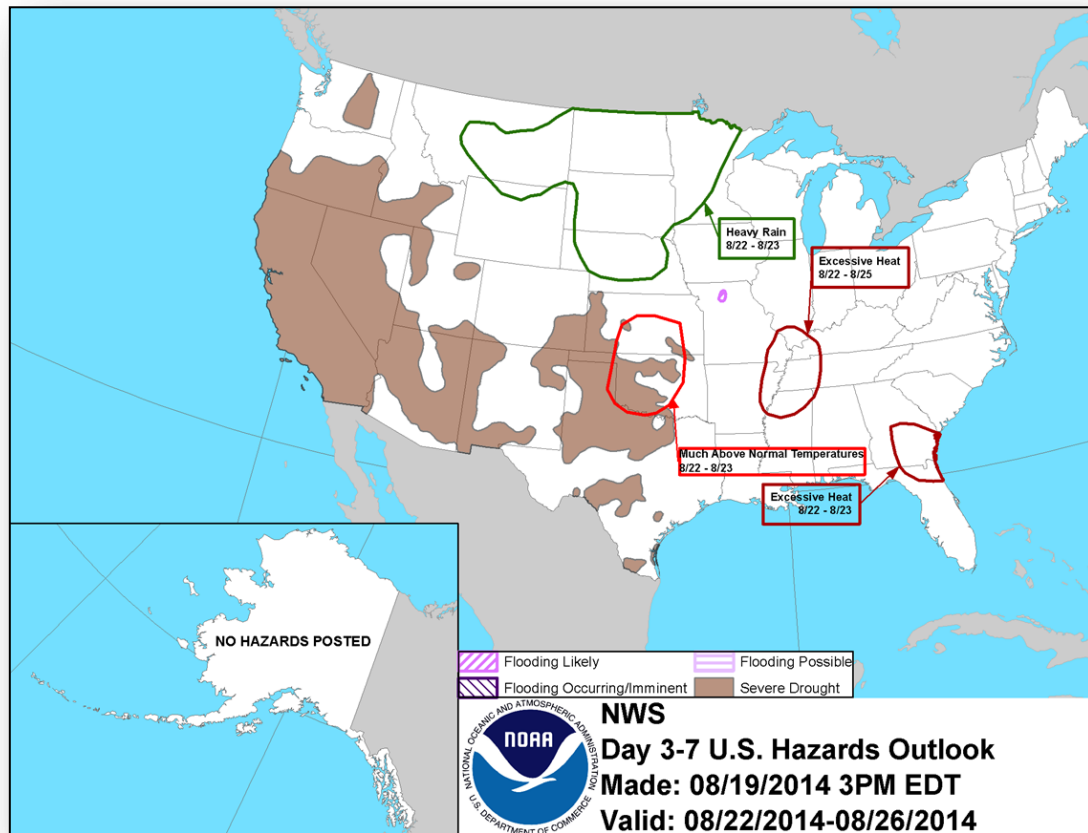
# Fire Weather Outlook, Days 1 – 8



# Hazard Outlook: August 22 – 26



FEMA

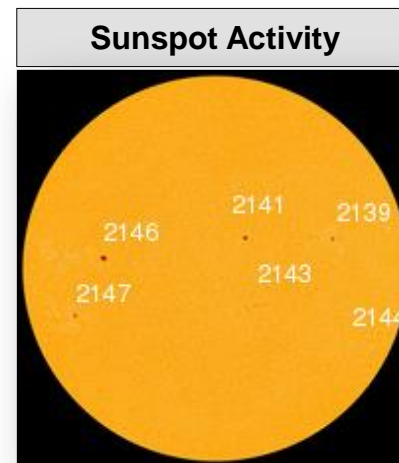
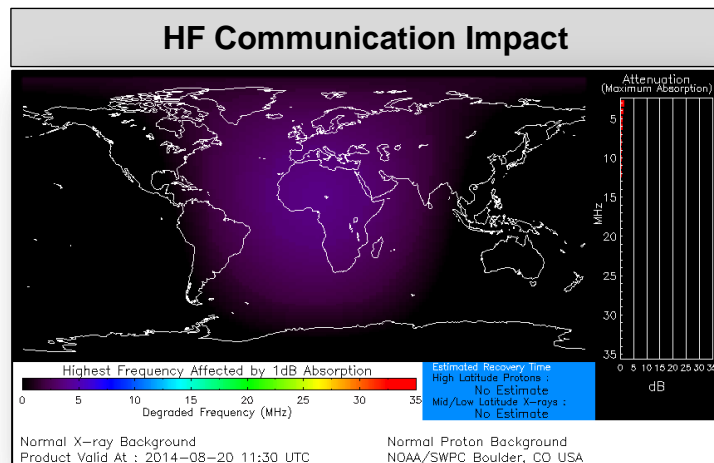


# Space Weather



FEMA

NOAA Scales Activity (Range: 1/minor to 5/extreme)	Past 24 Hours	Current	Next 24 Hours
Space Weather Activity:	Moderate	None	Moderate
• Geomagnetic Storms	G2	None	G2
• Solar Radiation Storms	None	None	None
• Radio Blackouts	None	None	None

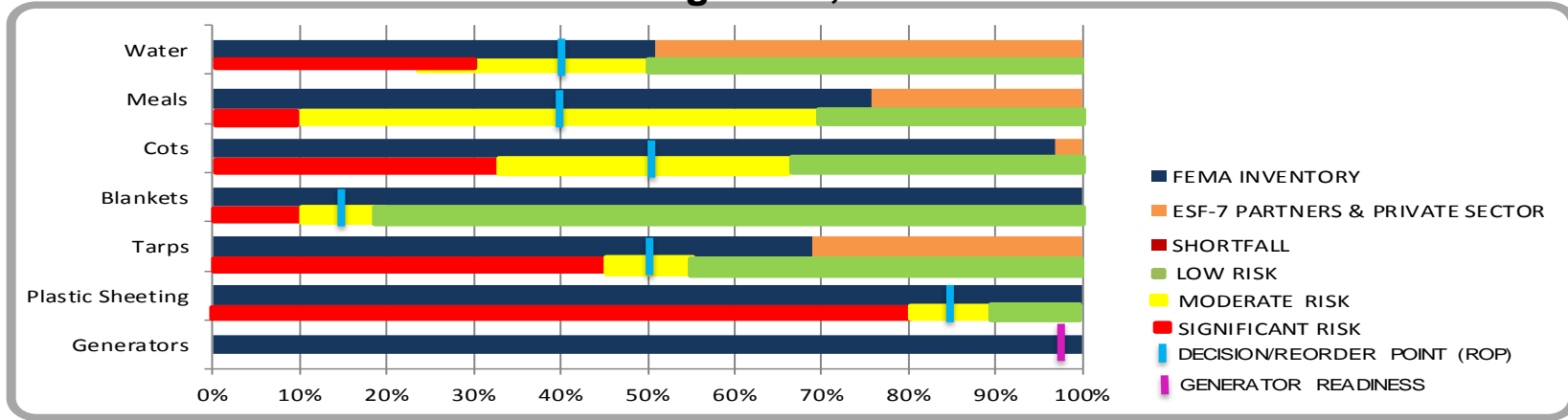


# FEMA CONUS Commodity Readiness

## as of August 15, 2014



FEMA



Commodity	Atlanta	Ft. Worth	Frederick	Moffett	Cumberland	Selma & PPS	FEMA Total (CONUS)	Catastrophic Requirement
Water	1,285,317	2,450,148	1,589,034	498,600	2,090,436	17,160	7,930,695	15,575,000
Meals	3,010,986	1,734,916	1,420,488	480,936	297,300	998,438	7,943,064	10,500,000
Cots	11,926	32,543	41,227	22,018	27,434	34,592	169,740	175,000
Blankets	400,707	202,350	215,309	53,864	535,657	184,988	1,592,875	350,000
Tarps	202,736	137,491	1,675	8,631	9,428	1,824	361,785	525,000
Plastic Sheetting	8,045	51,006	13,122	8,580	114,100	376	195,229	78,750
Generators	179	212	129	127			647	432

### NOTE

Catastrophic requirement based on supporting 1.75 million survivors for 3 days.

47K reduced sodium meals on order for DC Frederick and 36K reduced sodium meals on order for DC Ft Worth, RDD NLT 29 Aug 2014

# FEMA Readiness – Deployable Teams/Assets



Deployable Teams/Assets																									
Resource	Status	Total	Available		Partially Available	Not Available	Detailed Deployed Activated	Comments	Rating Criterion																
FCO		39	15	38%	0	1	23		OFDC Readiness: <table><tr><td>FCO</td><td>Green</td><td>Yellow</td><td>Red</td></tr><tr><td>Type 1</td><td>3+</td><td>2</td><td>1</td></tr><tr><td>Type 2</td><td>4+</td><td>3</td><td>2</td></tr><tr><td>Type 3</td><td>4</td><td>3</td><td>2</td></tr></table>	FCO	Green	Yellow	Red	Type 1	3+	2	1	Type 2	4+	3	2	Type 3	4	3	2
FCO	Green	Yellow	Red																						
Type 1	3+	2	1																						
Type 2	4+	3	2																						
Type 3	4	3	2																						
FDRC		10	5	50%	0	0	5		<u>FDRC</u> 3        2        1																
US&R		28	26	93%	1	1	0	<ul style="list-style-type: none"><li>NM-TF1 (Red for personnel shortages)</li><li>CA-TF1 (Yellow for logistics &amp; management)</li></ul>	<ul style="list-style-type: none"><li>Green = Available/FMC</li><li>Yellow = Available/PMC</li><li>Red    = Out-of-Service</li><li>Blue   = Assigned/Deployed</li></ul>																
National IMAT		3	3	100%	0	0	0		<ul style="list-style-type: none"><li>Green: 3 avail</li><li>Yellow: 1-2 avail</li><li>Red: 0 avail (<i>Individual N-IMAT red if 50% of Section Chiefs and/or Team Leader is unavailable for deployment.</i>)</li></ul>																
Regional IMAT		13	4	31%	3	4	2	<u>Partially Mission Capable (PMC):</u> <ul style="list-style-type: none"><li>Region II, III, VI (Team 1)</li></ul> <u>Not Mission Capable (NMC):</u> <ul style="list-style-type: none"><li>Region V, VI (Team 2), VII, IX</li></ul> <u>Deployed</u> <ul style="list-style-type: none"><li>Region X to WA</li><li>Region VIII to SD</li></ul>	<ul style="list-style-type: none"><li>Green: 7 or more avail</li><li>Yellow: 4 - 6 teams available</li><li>Red: &gt; 8 teams deployed/unavailable</li></ul> <p><i>R-IMAT also red if TL Ops/Log Chief is unavailable and has no qualified replacement.</i></p>																
MCOV		55	48	87%	0	7	0		<ul style="list-style-type: none"><li>Green = 80 – 100% avail</li><li>Yellow = 60 – 79% avail</li><li>Red = 59% or below avail</li><li>Readiness remains 95%</li></ul>																

# FEMA Readiness – National/Regional Teams



National/Regional Teams									
Resource	Status	Total	Available		Partially Available	Not Available	Deployed/ Activated	Comments	Rating Criterion
NWC		5	5	100%	0	0	24/7	Enhanced Watch (UC UCG)	• Green = FMC • Yellow = PMC • Red = NMC
NRCC		2	344	89%	0	44	Not Activated		
HLT		1	N/A	N/A	0	1	Activated	Activated	
DEST							Not Activated		
RRCCs		10	10	100%	0	0	0		
RWCs/MOCs		10	10	100%	0	0	24/7	• Region II RWC will go to an Enhanced Watch at 11:00 am EDT	





# FEMA

**FEMA's mission is to support our citizens and first responders to ensure that as a nation we work together to build, sustain, and improve our capability to prepare for, protect against, respond to, recover from, and mitigate all hazards.**