



FEMA

Daily Operations Briefing

Saturday, August 23, 2014

8:30 a.m. EDT

Significant Activity: August 22 – 23



Significant Events: Invest 96 L (Atlantic)

Tropical Activity:

- Atlantic – Disturbance 1 – Invest 96L (High; 80%)
- Eastern Pacific – Hurricane Karina; Tropical Storm Lowell; Hurricane Marie
- Central Pacific – Disturbance 1 – (Low; 10%)

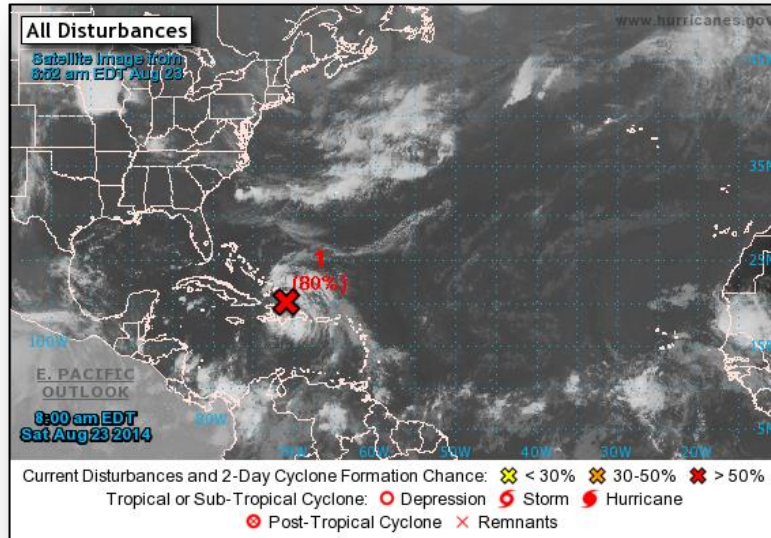
Significant Weather:

- Scattered severe thunderstorms – Northern Plains into Upper Mississippi Valley
- High-elevation snow – Northern Rockies
- Rain & isolated/scattered thunderstorms – Northern/Central Rockies to Mid-Atlantic & Southeast
- Flash flooding possible – Northern Plains
- Excessive heat – Middle Mississippi Valley to Southeast
- Elevated Fire Weather Areas: OK
- Red Flag Warnings: None
- Space Weather – Past 24 hours/next 24 hours: none

FEMA Readiness: No change

Declaration Activity: None

2-Day Tropical Outlook – Atlantic



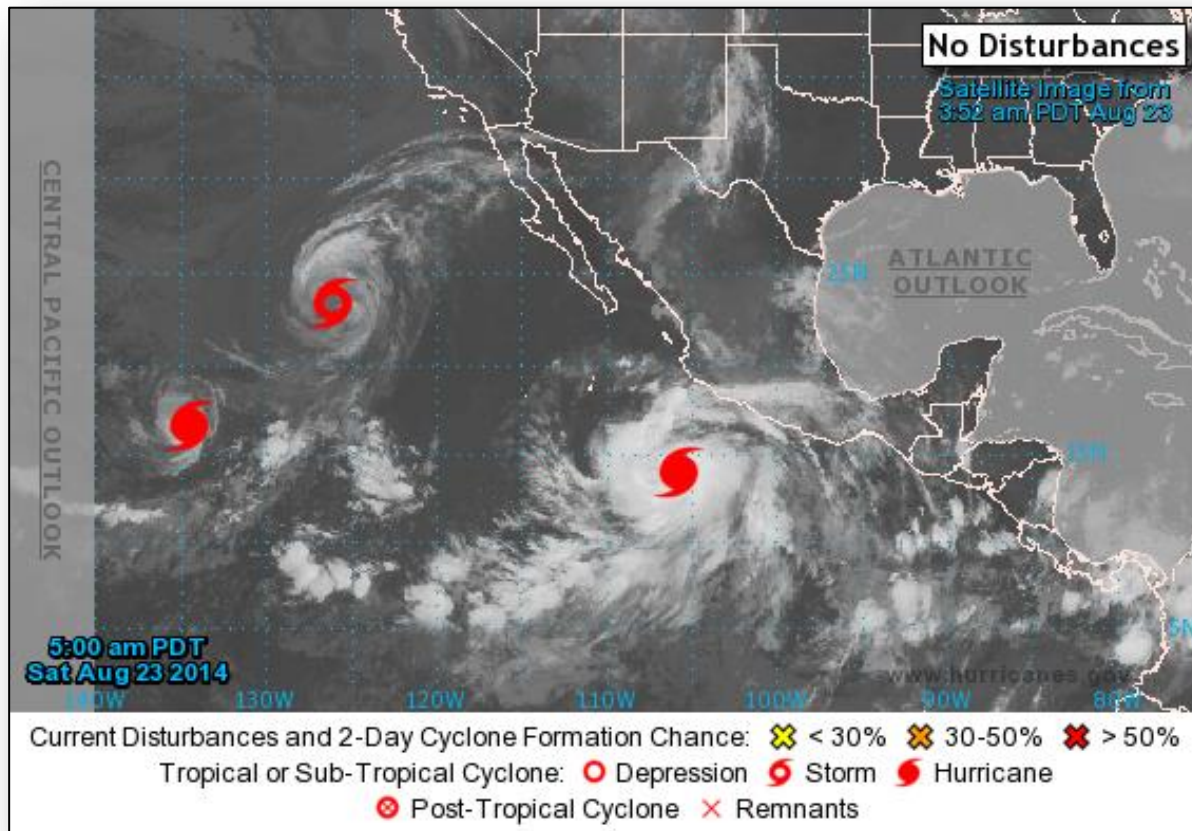
Disturbance 1 – Invest 96L (as of 8:00 a.m. EDT)

- Area of disturbed weather near Hispaniola continues to produce shower & thunderstorm activity
- Surface circulation could be organizing near the northern coast of the Dominican Republic
- Conditions are favorable for the development of a tropical depression or storm today or Sunday
- Forecast to move WNW over Bahamas today & Sunday
- Hurricane Hunter aircraft investigating the system
- Heavy rain & gusty winds expected across Puerto Rico and Hispaniola today;
- Heavy rain & tropical storm-force winds expected across southeastern/central Bahamas through Sunday
- Formation chance:
 - Next 48 hours: High (80%)
 - Next 5 days: High (90%)

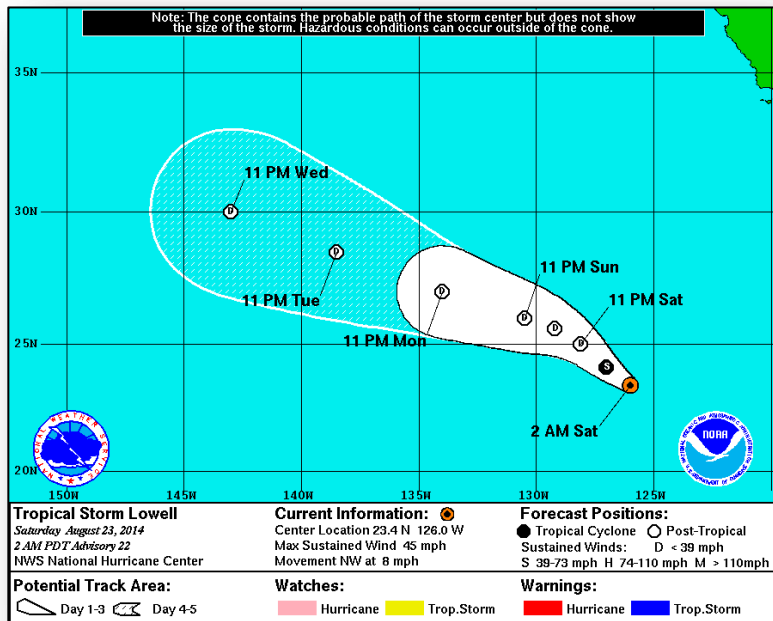
2-Day Tropical Outlook – Eastern Pacific



FEMA



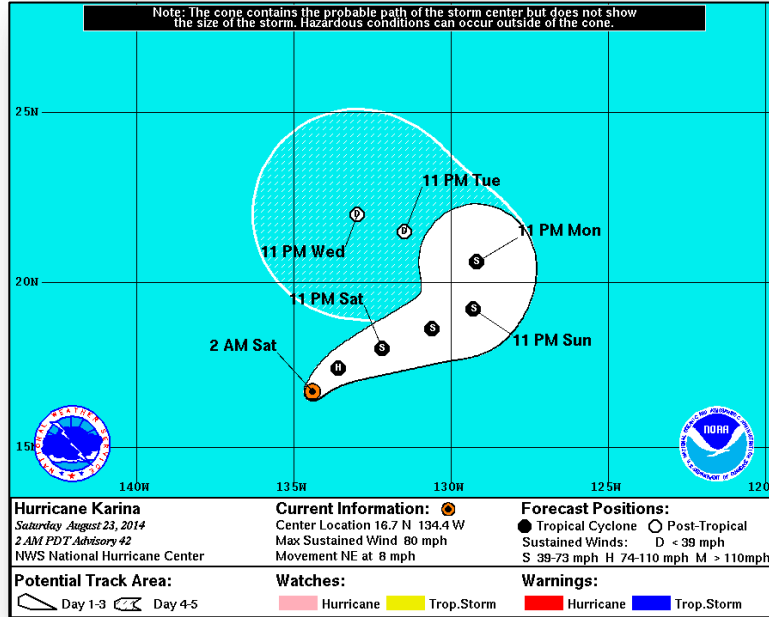
Tropical Storm Lowell – Eastern Pacific



Tropical Storm Lowell (as of 5:00 a.m. EDT)

- Located 1,020 miles W of southern tip of Baja California, Mexico
- Moving NW at 8 mph
- Maximum sustained winds 45 mph
- Turning toward the WNW by Sunday
- Additional weakening forecast during the next 48 hours
- Forecast to degenerate to a remnant low by Saturday night or Sunday
- Tropical storm-force winds extend 140 miles
- No coastal watches or warnings in effect

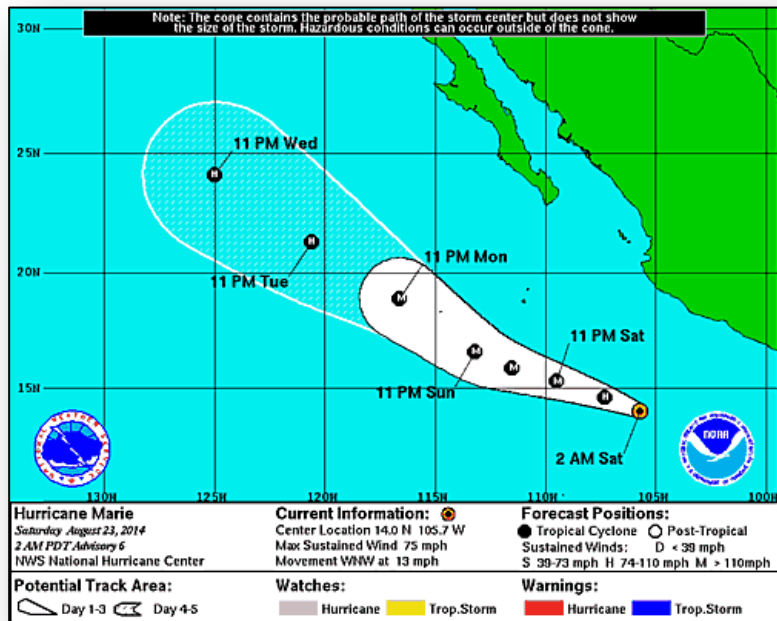
Hurricane Karina – Eastern Pacific



Hurricane Karina (as of 5:00 a.m. EDT)

- Located 1,375 miles E of Hilo, Hawaii
- Moving E at 8 mph
- Maximum sustained winds 80 mph
- Gradual weakening forecast to begin tomorrow & continue through Monday
- Forecast to weaken to a tropical storm on Saturday
- Hurricane force winds extend outward up to 10 miles
- Tropical storm-force winds extend 70 miles
- No coastal watches or warnings in effect

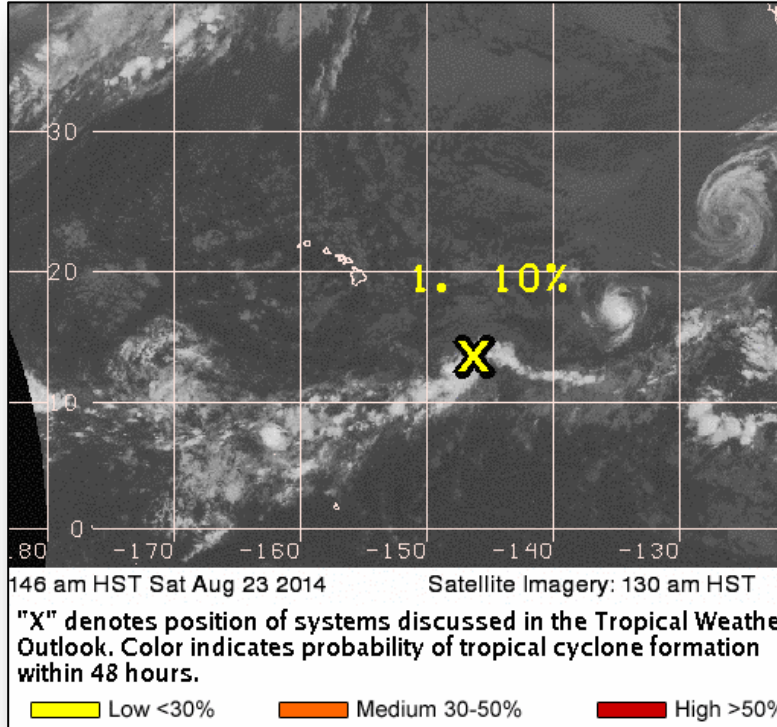
Tropical Storm Marie – Eastern Pacific



Hurricane Marie (as of 5:00 a.m. EDT)

- Located 355 miles SSW of Manzanillo, Mexico
- Moving WNW at 13 mph
- Motion expected to continue next 48 hours
- Maximum sustained winds 75 mph
- Strengthening forecast during the next 48 hours
- Likely to become a hurricane on Sunday
- Tropical storm-force winds extend outward to 90 miles
- No coastal watches or warnings in effect

2-Day Tropical Outlook – Central Pacific



Disturbance 1 – (as of 8:00 a.m. EDT)

- Located 730 miles SE of Hilo, Hawaii
- Moving NE near 10 mph over past 6 hours
- Generating isolated thunderstorms - showing little sign of organization
- Conditions conducive for limited development only over the next 2 days
- Formation chance next 48 hours: Low (10%)

Disaster Requests & Declarations



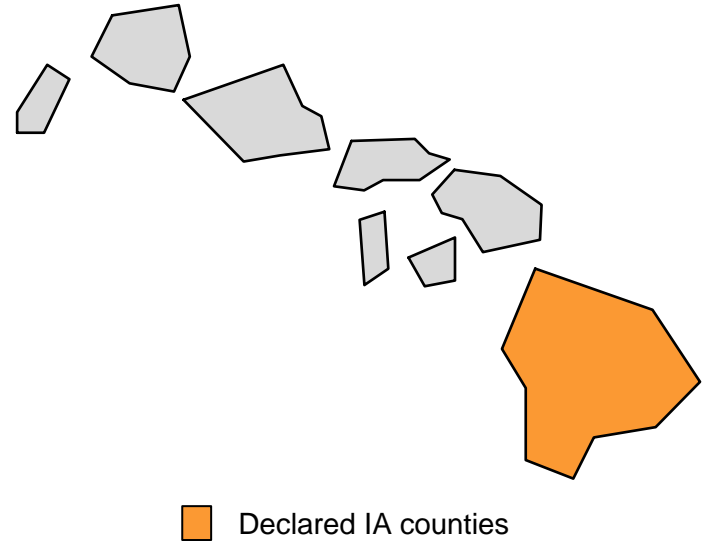
Declaration Requests in Process		Requests APPROVED (since last report)	Requests DENIED (since last report)
1	Date Requested	0	0
HI – DR for Tropical Storm Iselle	August 21, 2014		

Major Disaster Declaration Request – HI

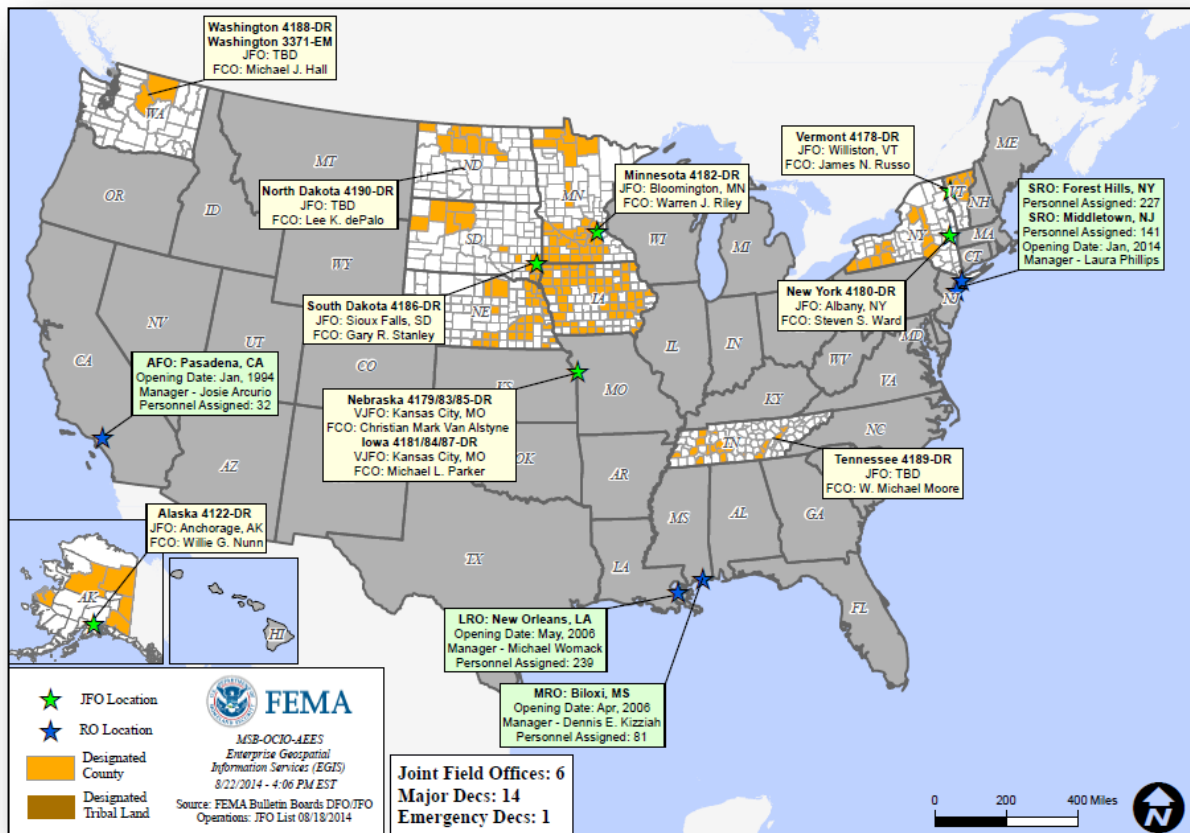


August 21, 2014

- Governor requested a Major Disaster Declaration for the State of Hawaii
- As a result of Tropical Storm Iselle during the period August 7-9, 2014
- Requested:
 - Individual Assistance for Hawaii County
 - Hazard Mitigation statewide



Open Field Offices as of August 23, 2014



Joint Preliminary Damage Assessments

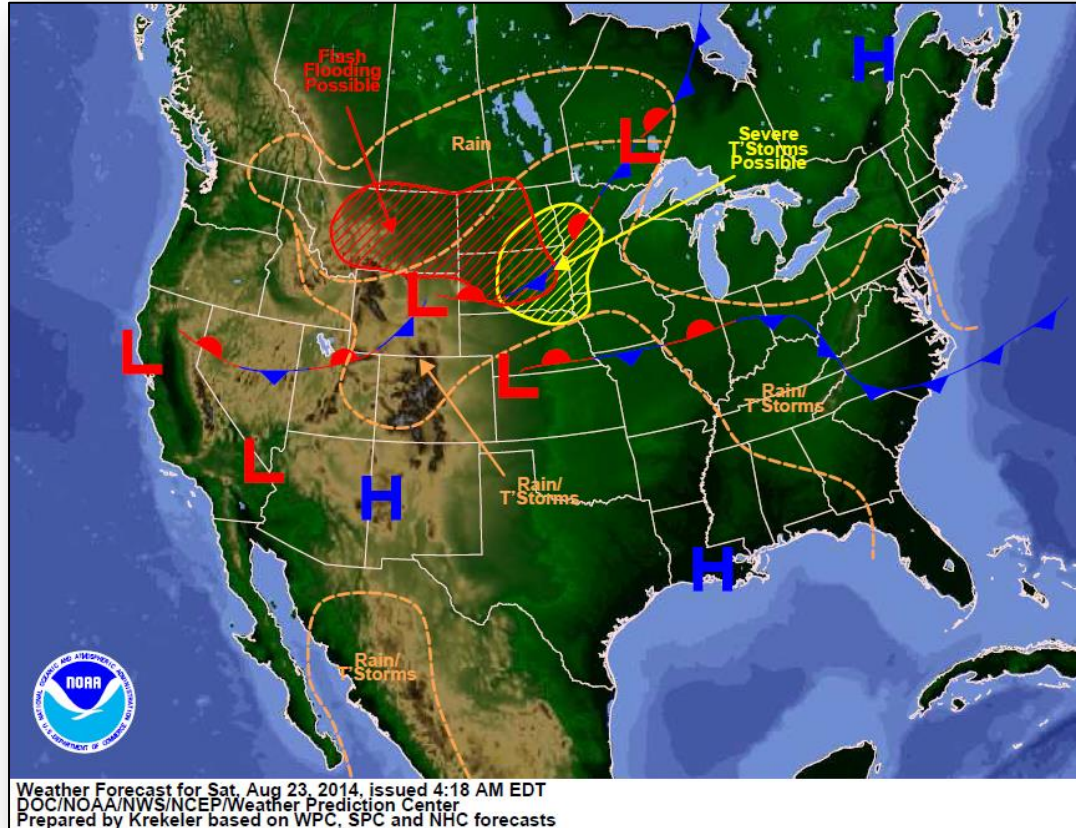


Region	State / Location	Event	IA/PA	Number of Counties		Start – End
				Requested	Complete	
II	New York	Heavy Rainfall & Flooding August 12-13, 2014	PA	1	0	TBD
			IA	1	0	TBD
V	Michigan	Heavy Rainfall & Flooding August 11, 2014	PA	3	0	8/26 - TBD
			IA	3	0	9/3 - TBD
IX	Hawaii	Hurricane Iselle August 7-9, 2014	PA	2	0	8/25 - 8/29
			IA	1	1	8/15 – 8/18

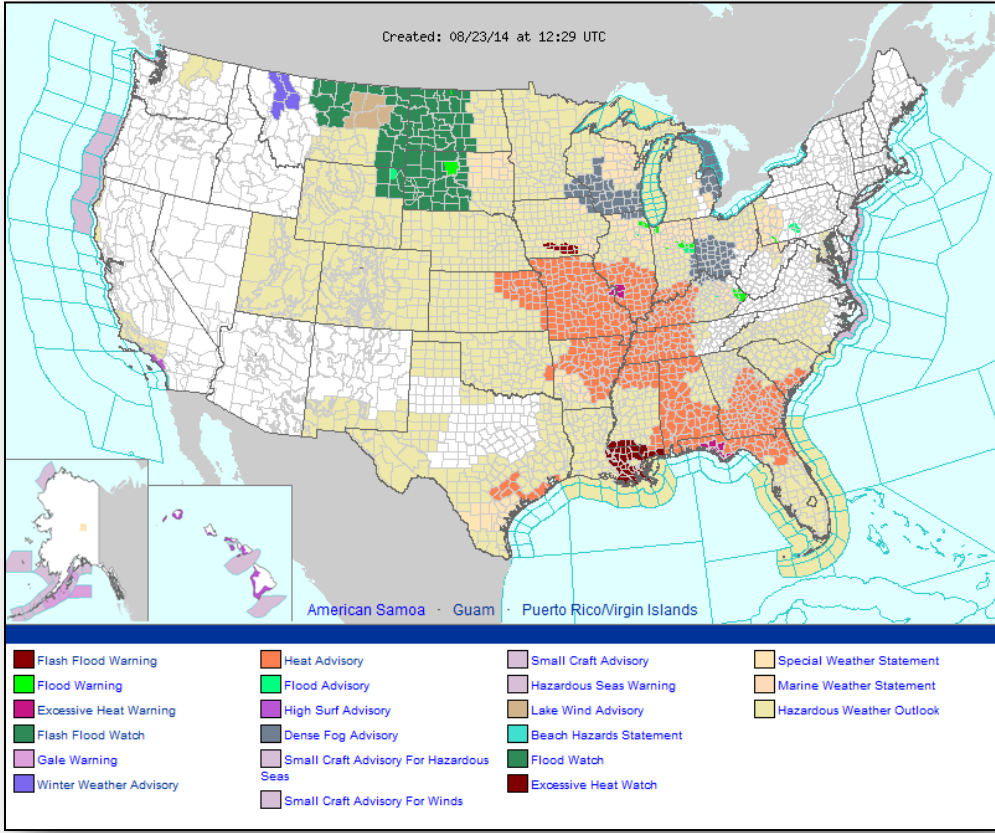
National Weather Forecast



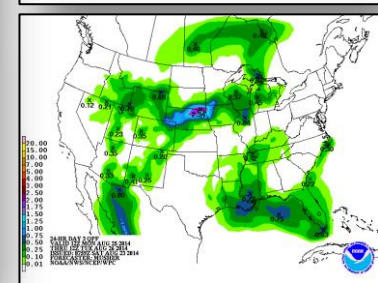
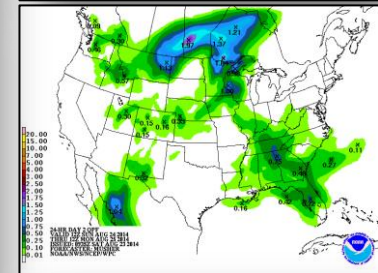
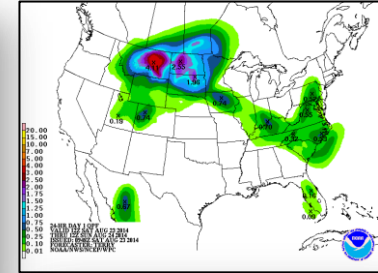
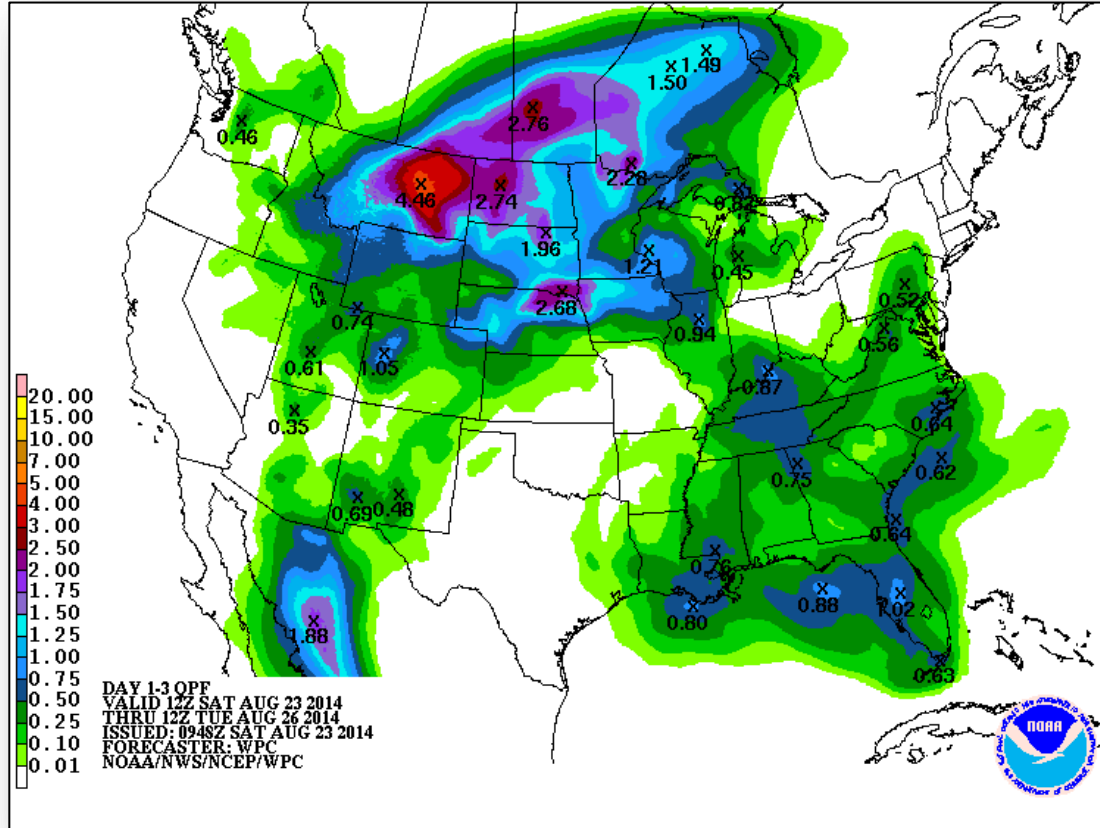
FEMA



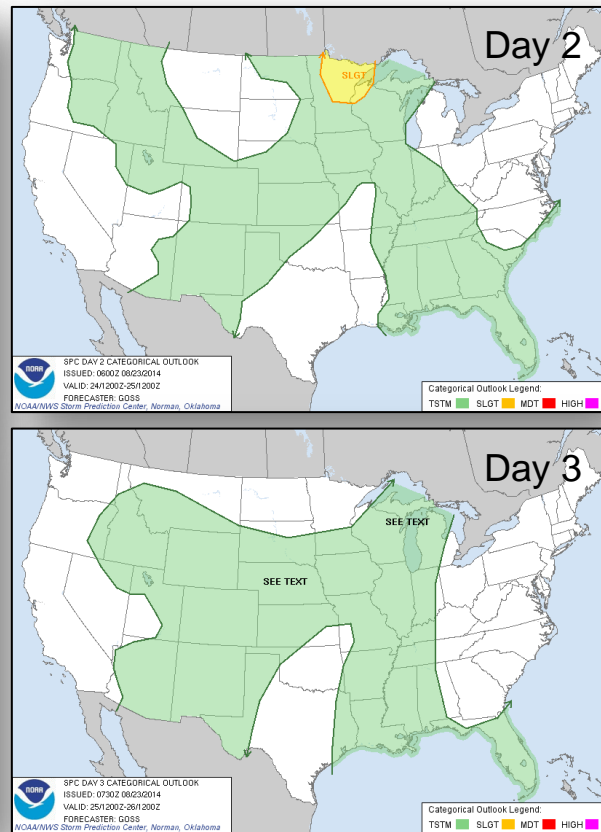
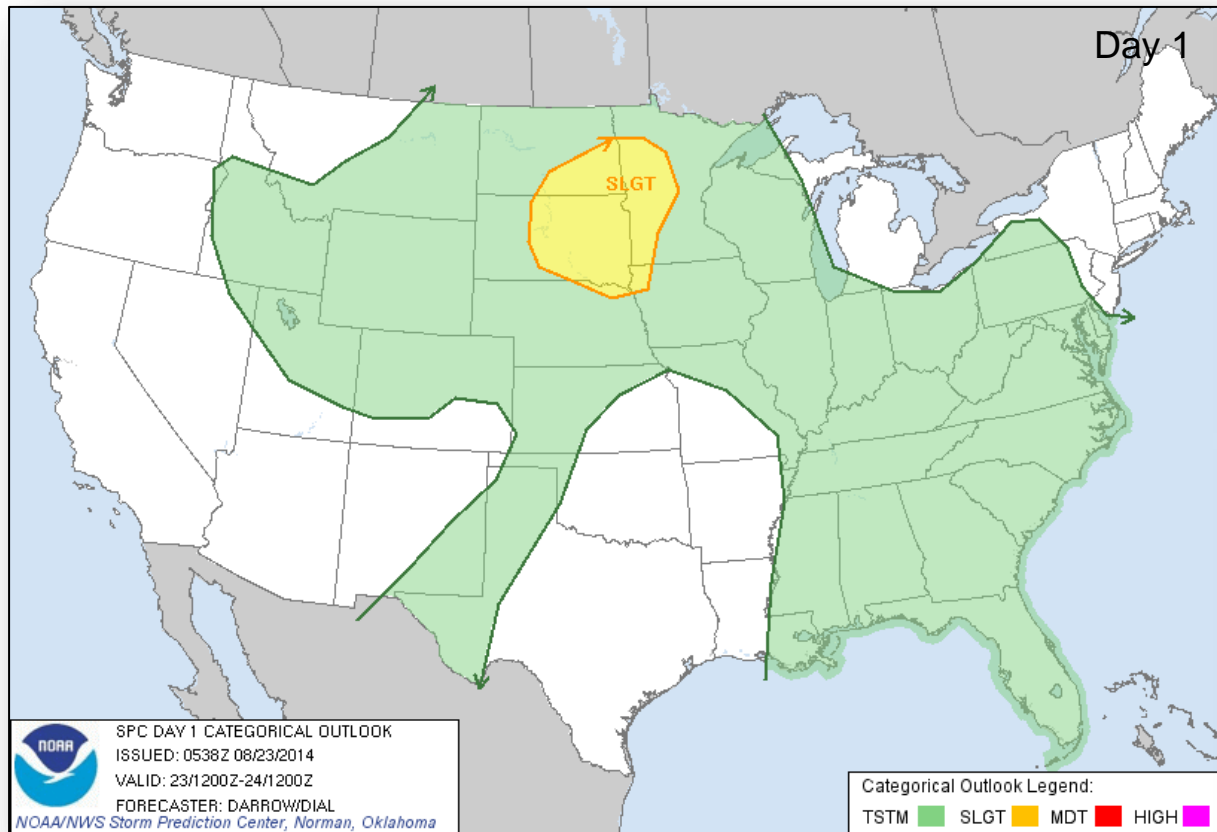
Active Watches/Warnings



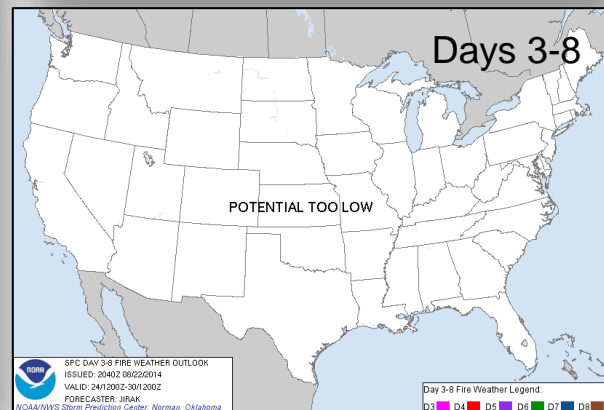
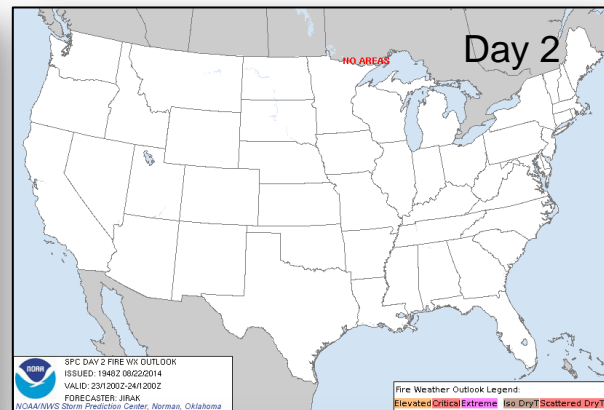
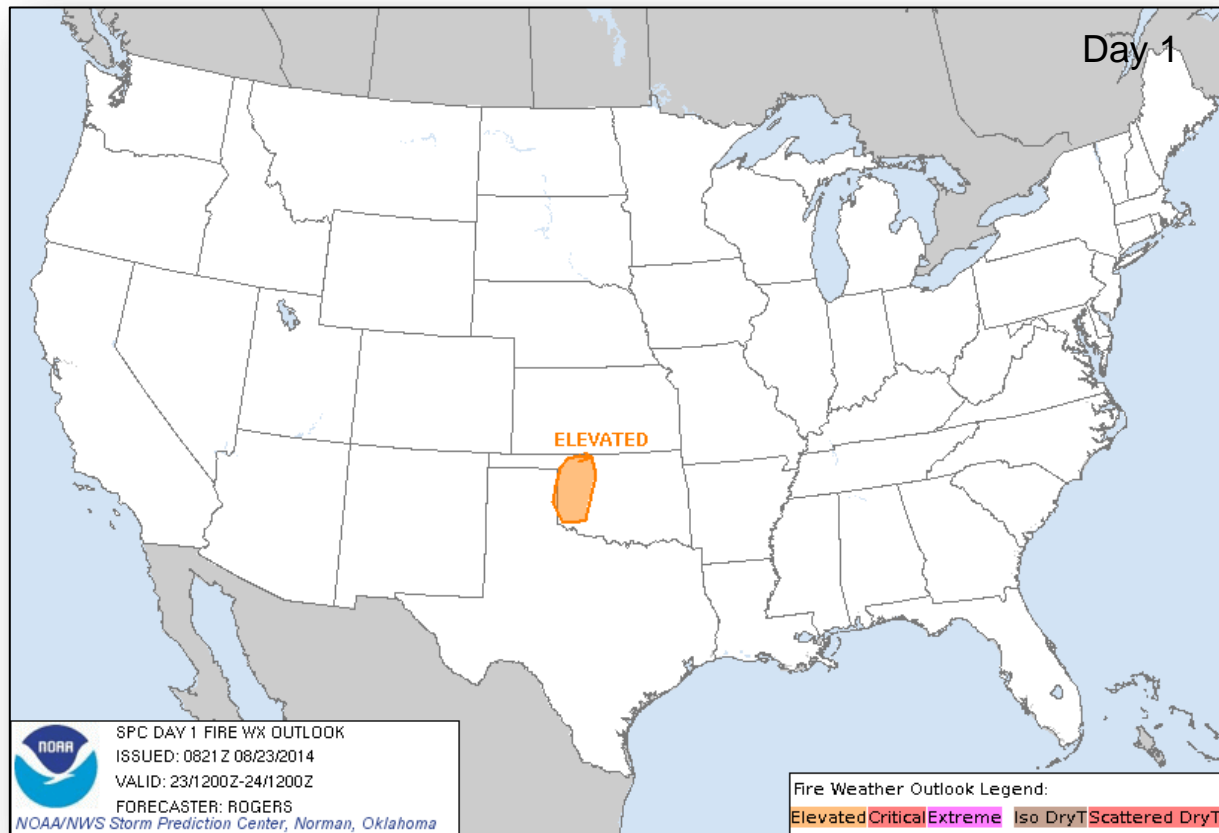
Precipitation Forecast – 3 Day



Convective Outlook, Days 1 – 3



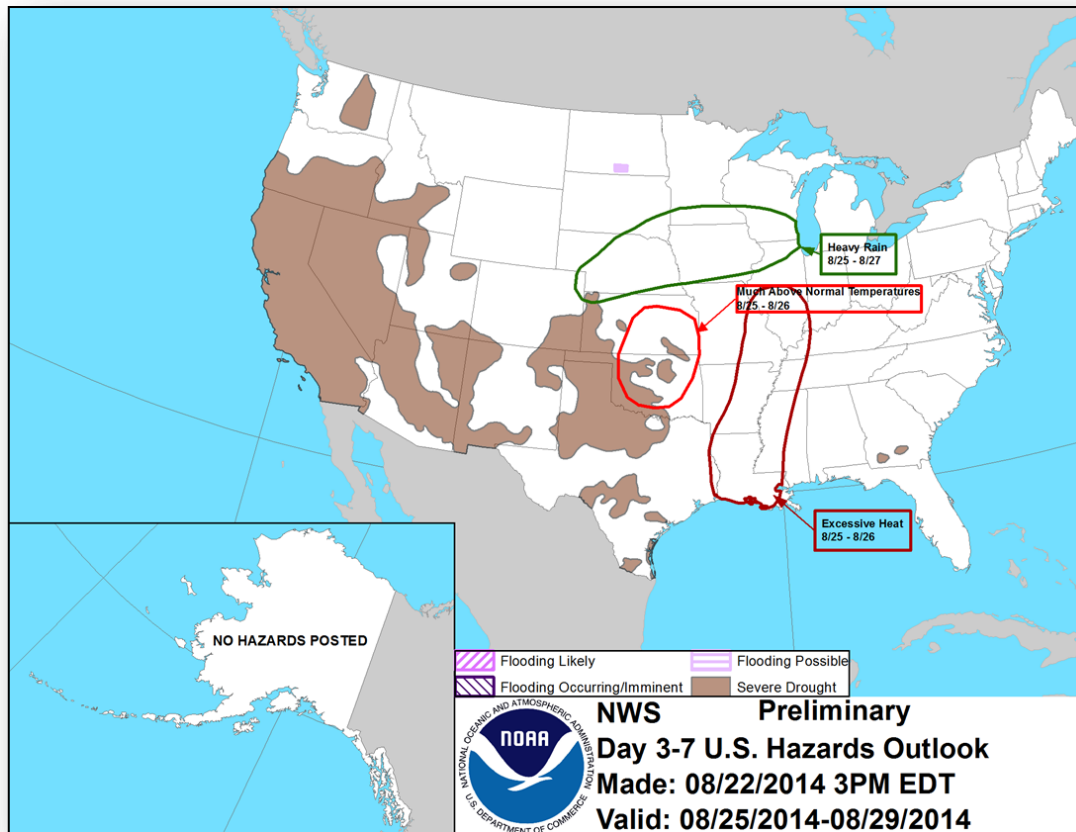
Fire Weather Outlook, Days 1 – 8



Hazard Outlook: August 25 – 29

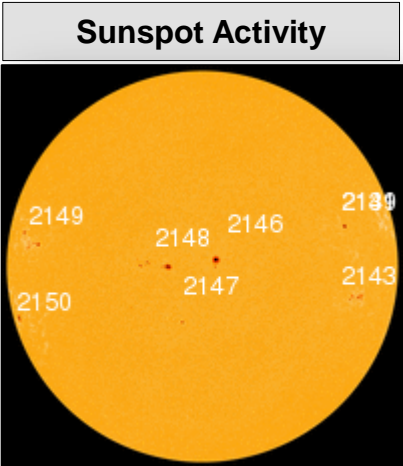
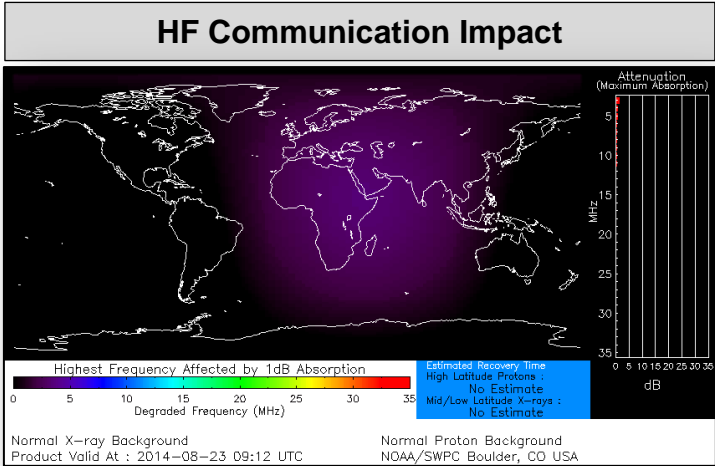


FEMA



Space Weather

NOAA Scales Activity (Range: 1/minor to 5/extreme)	Past 24 Hours	Current	Next 24 Hours
Space Weather Activity:	None	None	None
• Geomagnetic Storms	None	None	None
• Solar Radiation Storms	None	None	None
• Radio Blackouts	None	None	None



FEMA Readiness – Deployable Teams/Assets



Deployable Teams/Assets									
Resource	Status	Total	Available		Partially Available	Not Available	Detailed Deployed Activated	Comments	Rating Criterion
FCO		39	17	44%	0	1	21		OFDC Readiness: FCO Green Yellow Red Type 1 3+ 2 1 Type 2 4+ 3 2 Type 3 4 3 2 <u>FDRC</u> 3 2 1
FDRC		10	5	50%	0	0	5		
US&R		28	26	93%	1	1	0		<ul style="list-style-type: none">NM-TF1 (Red for personnel shortages)CA-TF1 (Yellow for logistics & management)
National IMAT		3	3	100%	0	0	0		<ul style="list-style-type: none">Green = Available/FMCYellow = Available/PMCRed = Out-of-ServiceBlue = Assigned/Deployed
Regional IMAT		13	4	31%	3	4	2	<u>Partially Mission Capable (PMC):</u> <ul style="list-style-type: none">Region II, III, VI (Team 1) <u>Not Mission Capable (NMC):</u> <ul style="list-style-type: none">Region V, VI (Team 2), VII, IX (Team 1), <u>Deployed</u>Region X to WARegion VIII to SD	<ul style="list-style-type: none">Green: 3 availYellow: 1-2 availRed: 0 avail (<i>Individual N-IMAT red if 50% of Section Chiefs and/or Team Leader is unavailable for deployment.</i>)
MCOV		54	47	87%	0	7	0		<ul style="list-style-type: none">Green: 7 or more availYellow: 4 - 6 teams availableRed: > 8 teams deployed/unavailable <i>R-IMAT also red if TL Ops/Log Chief is unavailable and has no qualified replacement.</i>
									<ul style="list-style-type: none">Green = 80 – 100% availYellow = 60 – 79% availRed = 59% or below availReadiness remains 95%

FEMA Readiness – National/Regional Teams



National/Regional Teams									
Resource	Status	Total	Available		Partially Available	Not Available	Deployed/ Activated	Comments	Rating Criterion
NWC		5	5	100%	0	0	24/7	Enhanced Watch (UC UCG)	• Green = FMC • Yellow = PMC • Red = NMC
NRCC		2	344	89%	0	44	Not Activated		
HLT		1	N/A	N/A	0	1	Activated		
DEST							Not Activated		
RRCCs		10	10	100%	0	0	0		
RWCs/MOCs		10	10	100%	0	0	24/7	Region II RWC at Enhanced Watch	



FEMA

FEMA's mission is to support our citizens and first responders to ensure that as a nation we work together to build, sustain, and improve our capability to prepare for, protect against, respond to, recover from, and mitigate all hazards.