



FEMA

Daily Operations Briefing

Sunday, August 24, 2014

8:30 a.m. EDT

Significant Activity: August 23 – 24



Significant Events: None

Tropical Activity:

- Atlantic – Tropical Storm Cristobal
- Eastern Pacific – Tropical Storm Karina; Post-Tropical Cyclone Lowell; Hurricane Marie (CAT 4)
- Central Pacific – No tropical cyclones are expected through late Monday night

Significant Weather:

- Slight risk of severe thunderstorms – Upper Mississippi Valley
- Flash flooding possible – Northern Plains and Upper Mississippi Valley
- Elevated Fire Weather Areas/Red Flag Warnings: None
- Space Weather – Past 24 hours/next 24 hours: none

Earthquakes:

- M6.0 Napa, CA
- M 6.4 Chile

FEMA Readiness: No change

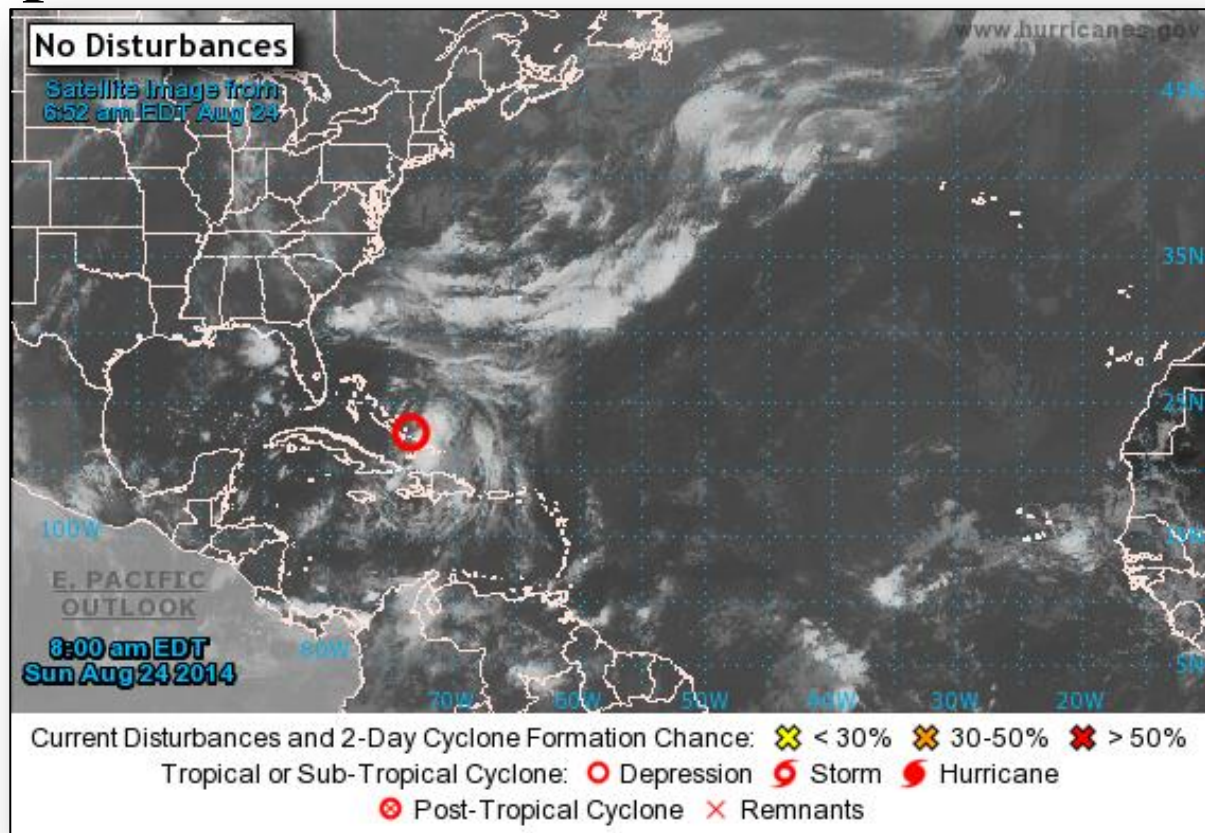
Declaration Activity:

- Major Disaster Declaration request for Hawaii

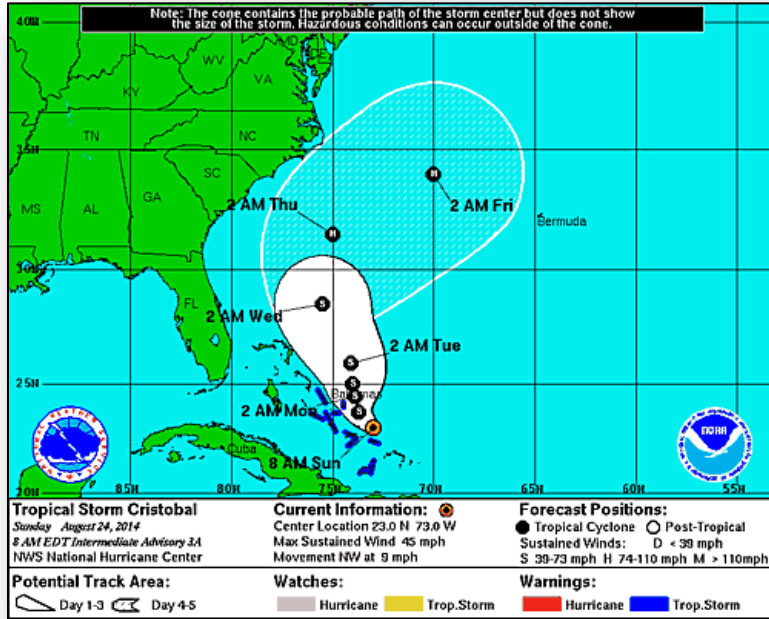
2-Day Tropical Outlook – Atlantic



FEMA



2-Day Tropical Outlook – Atlantic



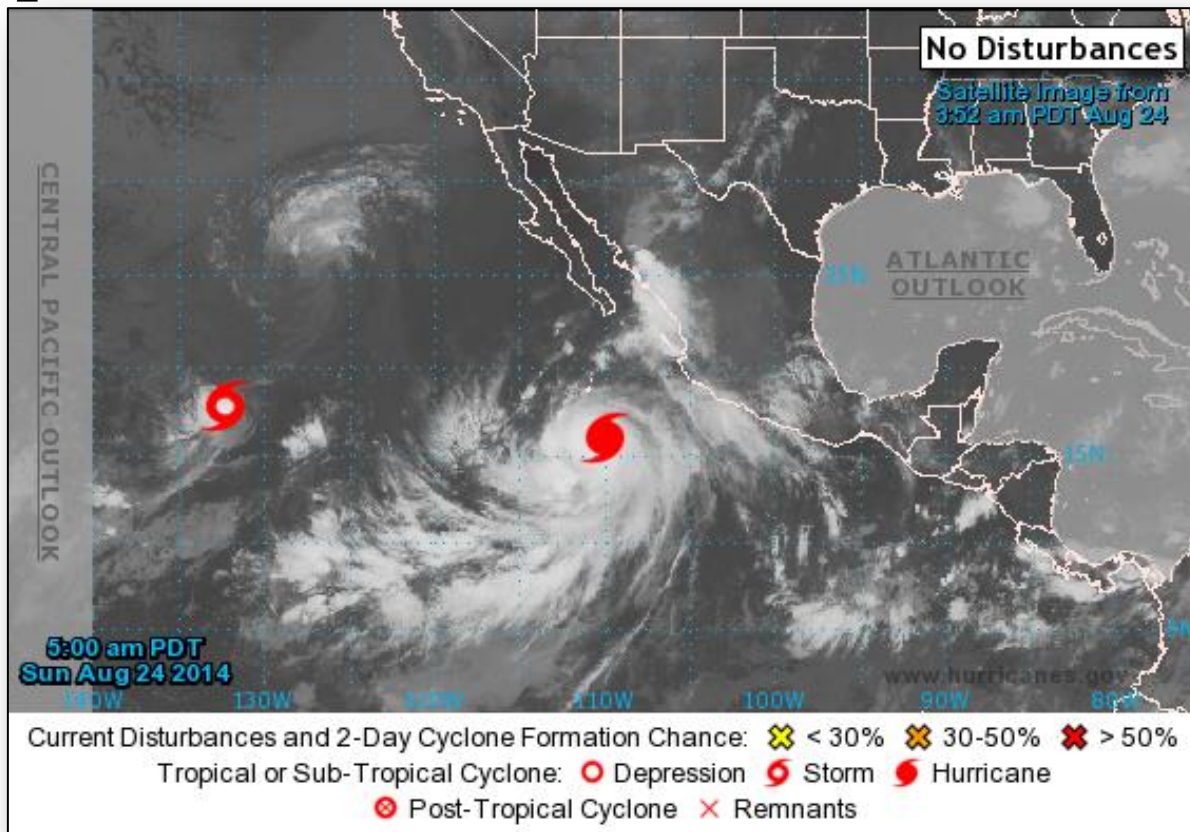
Tropical Storm Cristobal (as of 5:00 a.m. EDT)

- Located 40 miles N of Mayaguana Island
- Moving NW at 9 mph
- This motion expected to continue this morning followed by turn NNW and decrease in forward speed later today and Monday
- Center will move near or over portions of central Bahamas through Monday
- Maximum sustained winds 45 mph
- Some strengthening expected next 48 hours
- Tropical storm force winds extend 140 miles

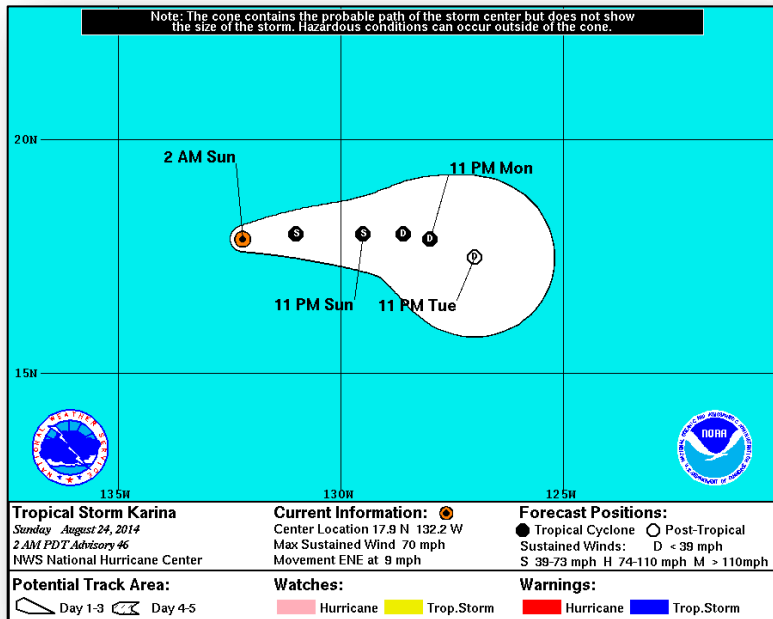
2-Day Tropical Outlook – Eastern Pacific



FEMA



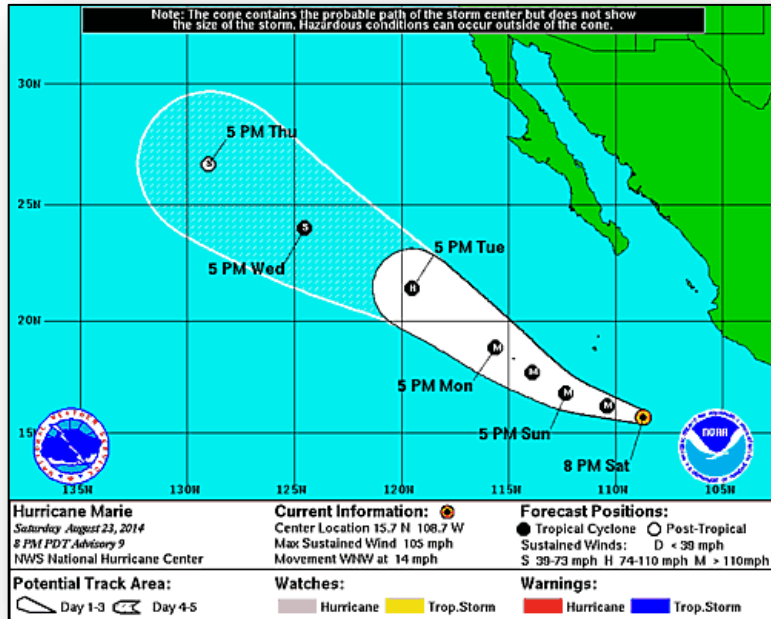
Tropical Storm Karina – Eastern Pacific



Tropical Storm Karina (as of 5:00 a.m. EDT)

- Located 1,500 miles E of Hilo, Hawaii
- Moving ENE at 9 mph
- Turn E expected by Monday
- Maximum sustained winds 70 mph
- Additional weakening forecast next couple of days
- Tropical storm force winds extend 70 miles
- No coastal watches or warnings in effect

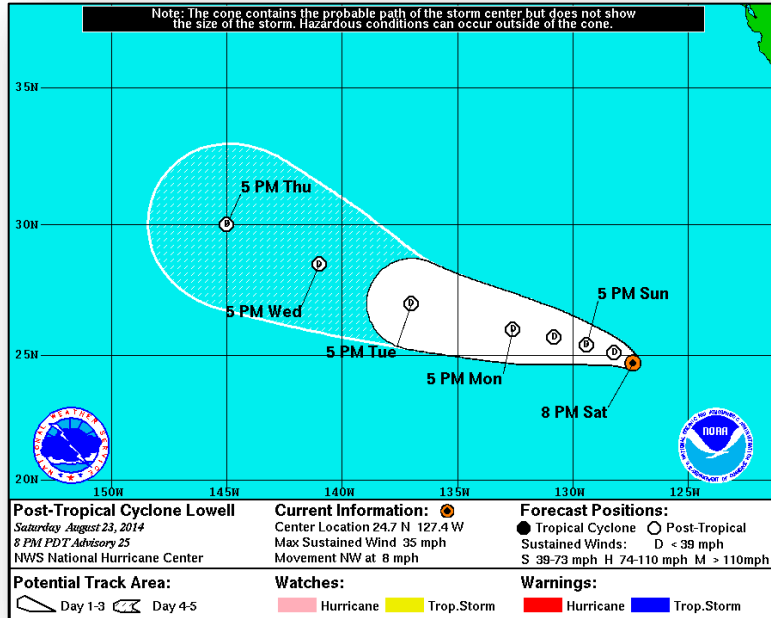
Hurricane Marie – Eastern Pacific



Hurricane Marie (as of 5:00 a.m. EDT)

- Located 420 miles WSW of Manzanillo, Mexico
- Moving WNW at 15 mph
- WNW to NW motion expected next couple of days
- Maximum sustained winds 135 mph (Category 4 hurricane)
- Additional strengthening possible next day or so
- Hurricane force winds extend 45 miles
- Tropical storm force winds extend 255 miles
- No coastal watches or warnings in effect

Post-Tropical Lowell – Eastern Pacific



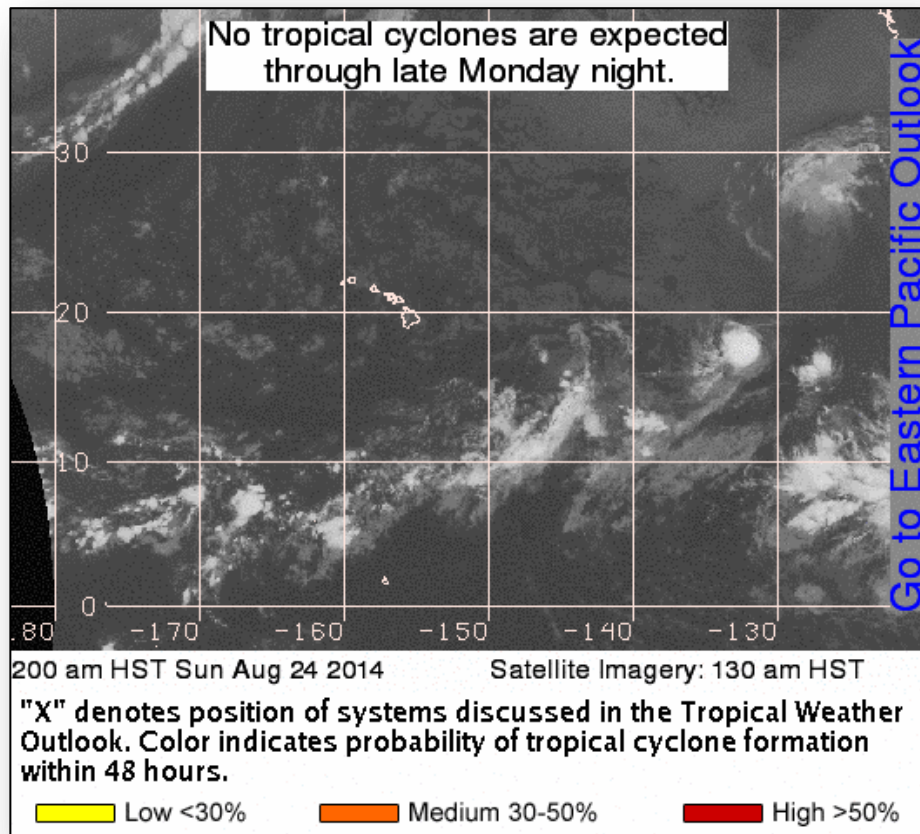
Post-Tropical Cyclone Lowell (as of 11:00 p.m. EDT)

- Located 1,110 miles W of southern tip of Baja California, Mexico
- Moving NW at 8 mph
- Turn toward the WNW expected by today
- Maximum sustained winds 35 mph
- Additional slow weakening expected next 48 hours
- This is last Public Advisory

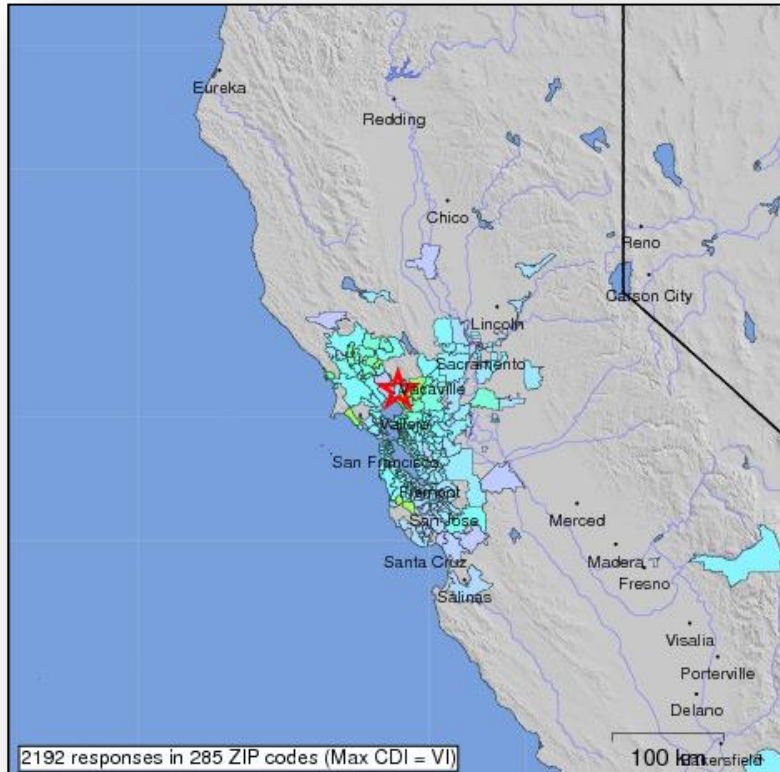
2-Day Tropical Outlook – Central Pacific



FEMA



Earthquake Activity – Napa, CA

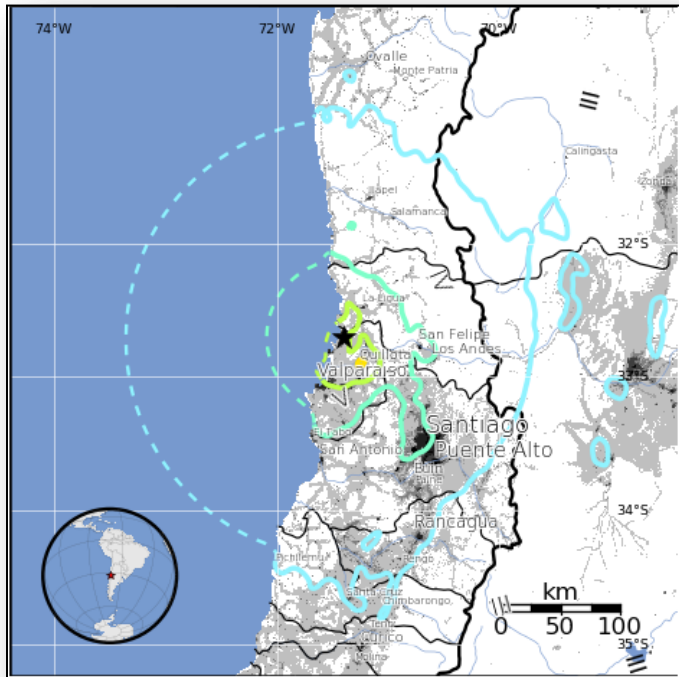


M 6.0 – Napa, CA

- Occurred at 6:20 a.m. EDT, August 24, 2014
- 6 miles SSW of Napa, CA
- Depth of 6.7 miles
- USGS issued Orange PAGER alert for economic damages – significant damage likely and disaster potentially widespread
- USGS issued Green PAGER alert for shaking-related fatalities – low likelihood of casualties
- Level VIII on Modified Mercalli Intensity scale – 15k exposed to severe shaking
- No preliminary reports of injuries or fatalities; damage assessments ongoing
- Areas north of Bay Area reporting 65k customers without power
- No requests for FEMA assistance

Estimated Modified Mercalli Intensity		I	II-III	IV	V	VI	VII	VIII	IX	X
Est. Population Exposure		--*	1,487k*	6,291k*	738k	176k	106k	15k	0k	0k
Perceived Shaking		Not Felt	Weak	Light	Moderate	Strong	Very Strong	Severe	Violent	Extreme
Potential Structure Damage	Resistant	none	none	none	V.Light	Light	Moderate	Moderate/Heavy	Heavy	V.Heavy
	Vulnerable	none	none	none	Light	Moderate	Moderate/Heavy	Heavy	V.Heavy	V.Heavy

Earthquake Activity – International



M 6.4 – Chile

- Occurred at 6:32 p.m. EDT, August 23, 2014
- 67 miles NW of Santiago, Chile
- Depth of 22 miles
- USGS issued Yellow PAGER alert economic losses and fatalities
- Level VII on Modified Mercalli Intensity scale – 82k exposed to very strong shaking
- No reports of injuries or fatalities
- No request for international assistance was received
- No request for FEMA assistance

Estimated Modified Mercalli Intensity		I	II-III	IV	V	VI	VII	VIII	IX	X
Est. Population Exposure		--*	2,597k*	3,911k	4,950k	921k	82k	0k	0k	0k
Perceived Shaking		Not Felt	Weak	Light	Moderate	Strong	Very Strong	Severe	Violent	Extreme
Potential Structure Damage	Resistant	none	none	none	V.Light	Light	Moderate	Moderate/Heavy	Heavy	V.Heavy
	Vulnerable	none	none	none	Light	Moderate	Moderate/Heavy	Heavy	V.Heavy	V.Heavy

Disaster Requests & Declarations



Declaration Requests in Process		Requests APPROVED (since last report)	Requests DENIED (since last report)
1	Date Requested	0	0
HI – DR for Tropical Storm Iselle	August 21, 2014		

Major Disaster Declaration Request – Hawaii



FEMA

August 21, 2014

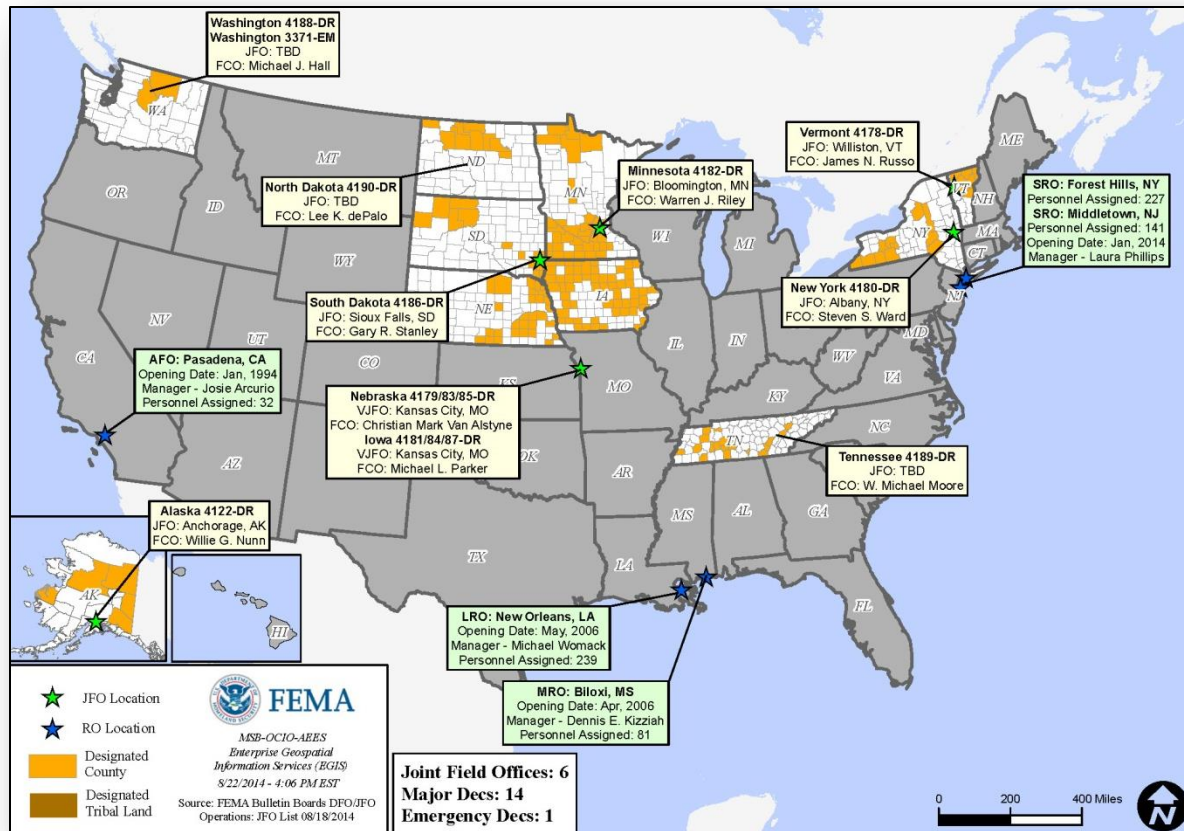
- Request for Major Disaster Declaration for the State of Hawaii
- For Tropical Storm Iselle that occurred during the period August 7-9, 2014
- Requesting:
 - Individual Assistance for Hawaii County
 - Hazard Mitigation statewide



Open Field Offices as of August 24, 2014



FEMA



Joint Preliminary Damage Assessments

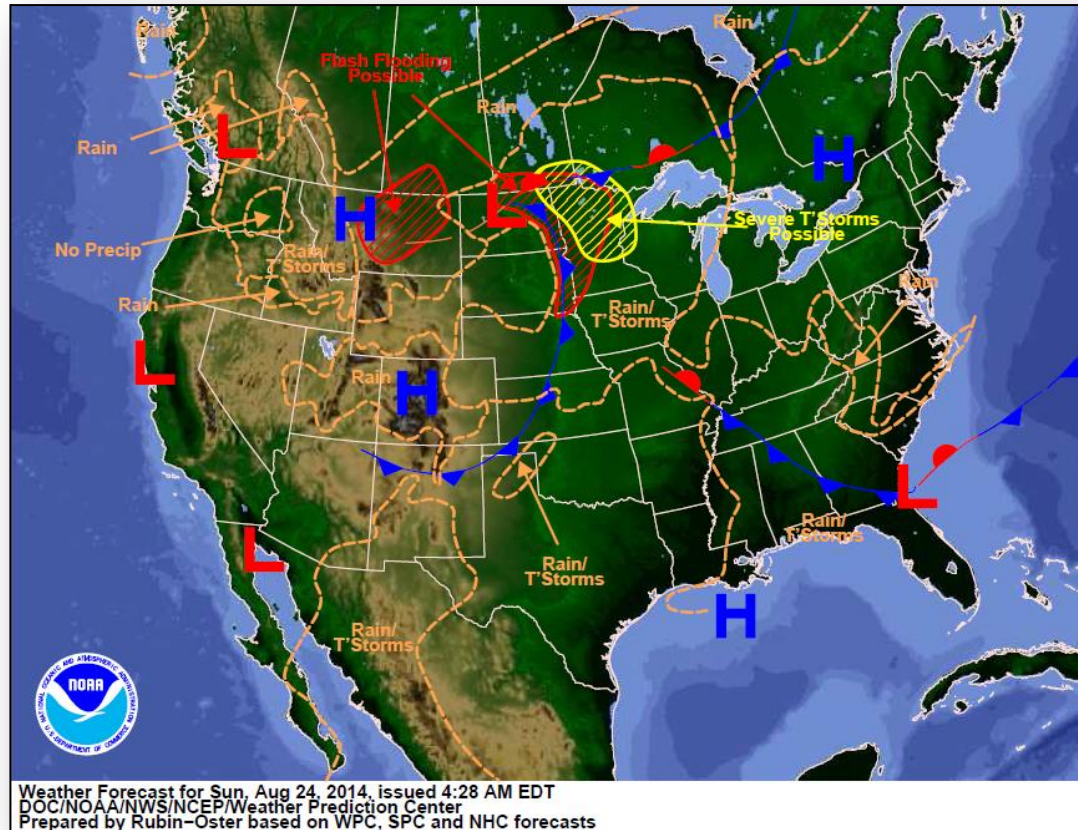


Region	State / Location	Event	IA/PA	Number of Counties		Start – End
				Requested	Complete	
II	New York	Heavy Rainfall & Flooding August 12-13, 2014	PA	1	0	TBD
			IA	1	0	TBD
V	Michigan	Heavy Rainfall & Flooding August 11, 2014	PA	3	0	8/26 - TBD
			IA	3	0	9/3 - TBD
IX	Hawaii	Hurricane Iselle August 7-9, 2014	PA	2	0	8/25 - 8/29
			IA	1	1	8/15 – 8/18

National Weather Forecast

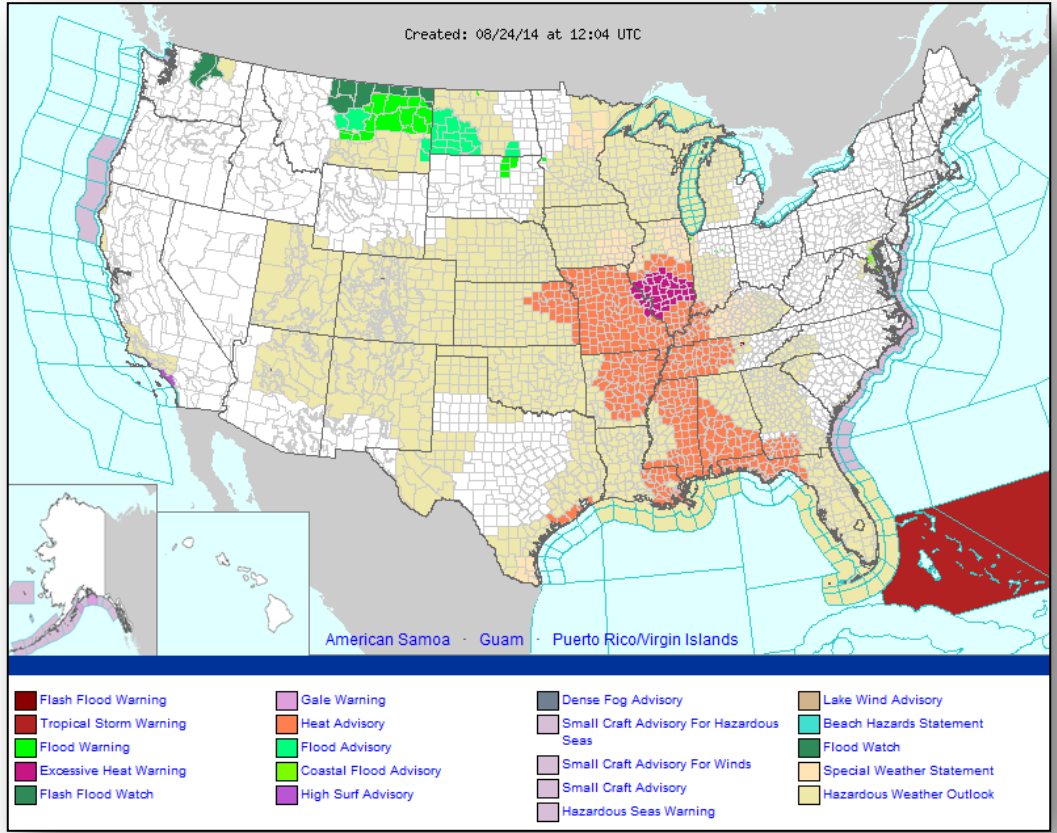


FEMA



Weather Forecast for Sun, Aug 24, 2014, issued 4:28 AM EDT
DOC/NOAA/NWS/NCEP/Weather Prediction Center
Prepared by Rubin-Oster based on WPC, SPC and NHC forecasts

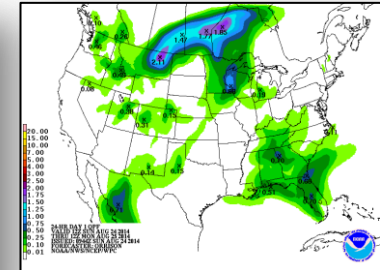
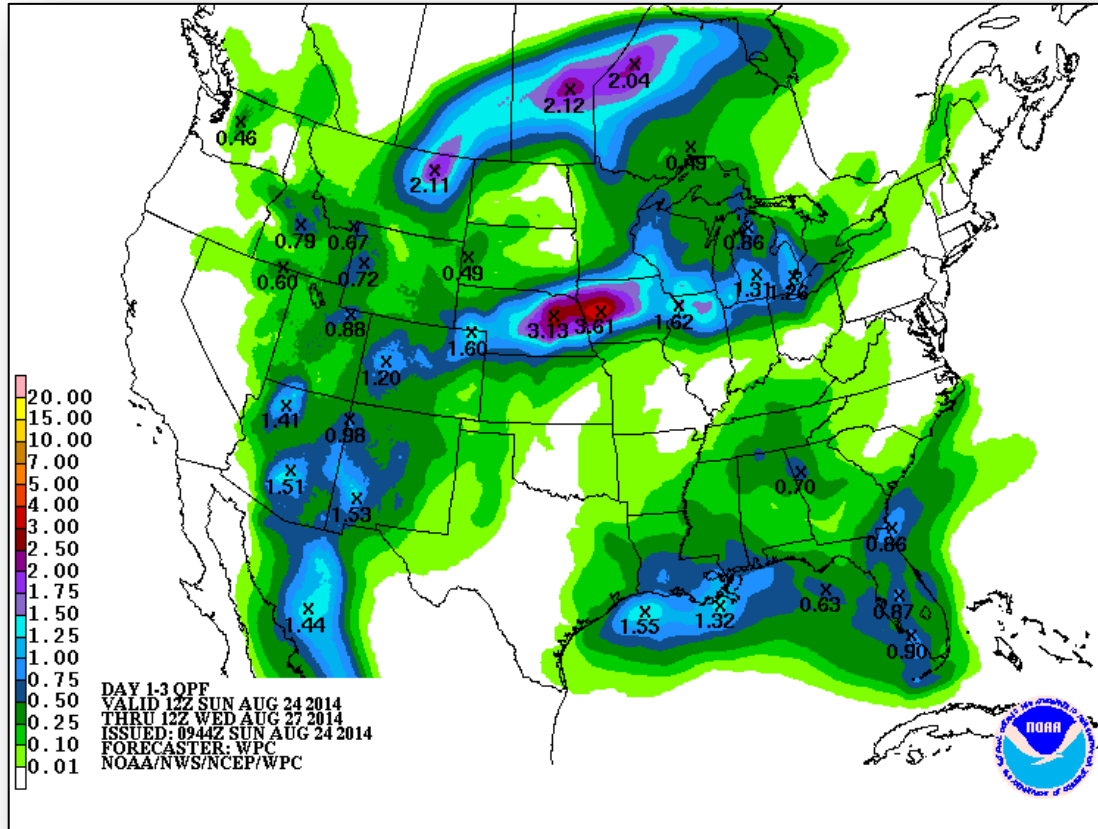
Active Watches/Warnings



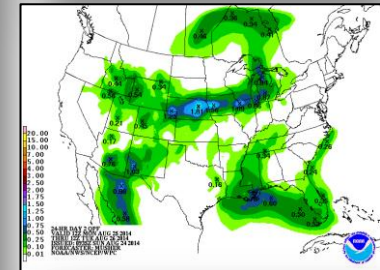
Precipitation Forecast – 3 Day



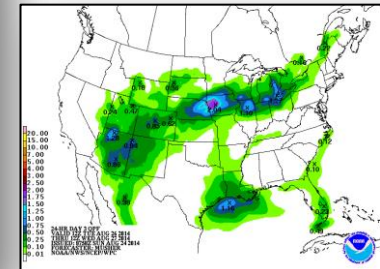
FEMA



Day 1

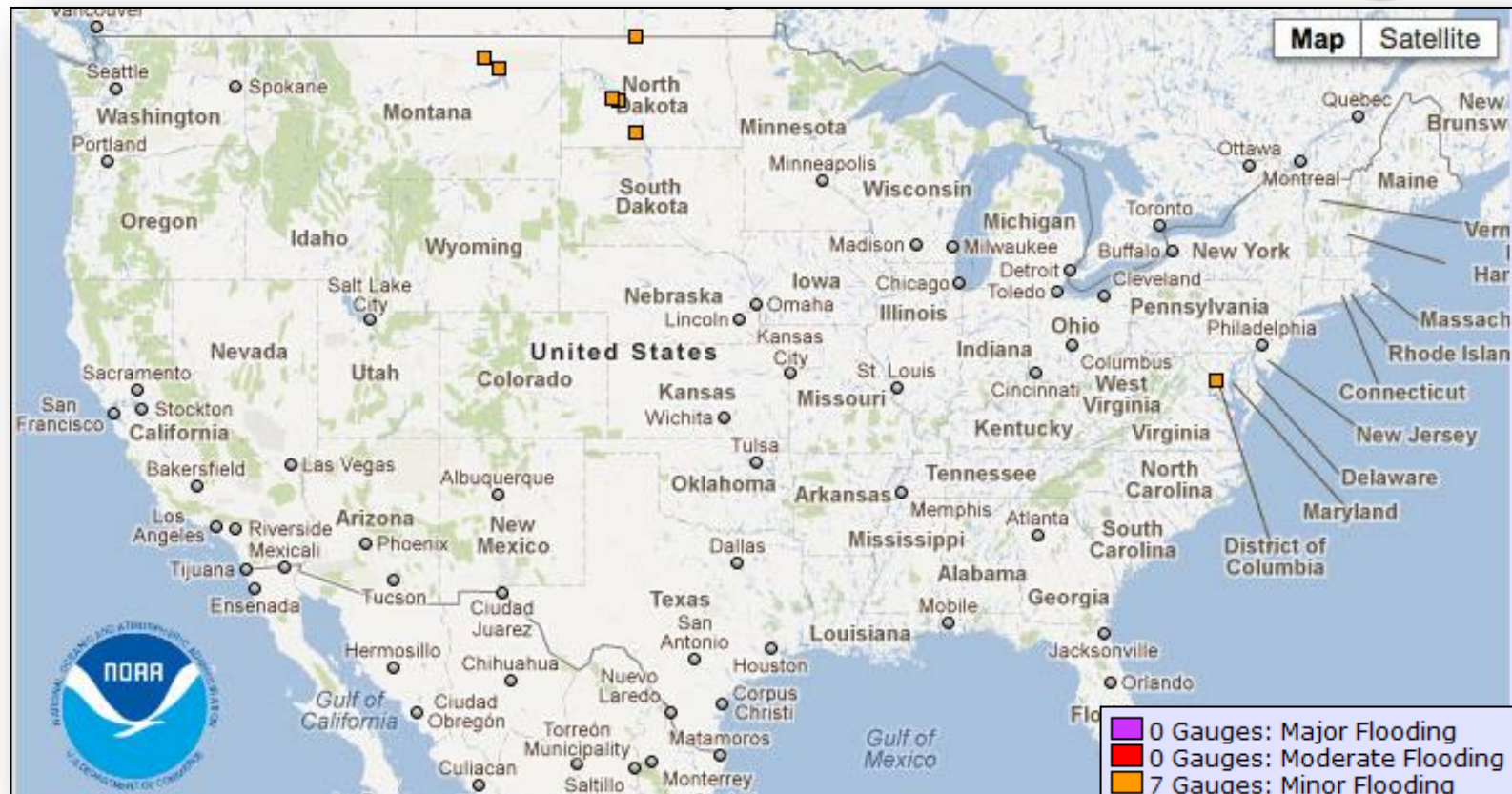


Day 2

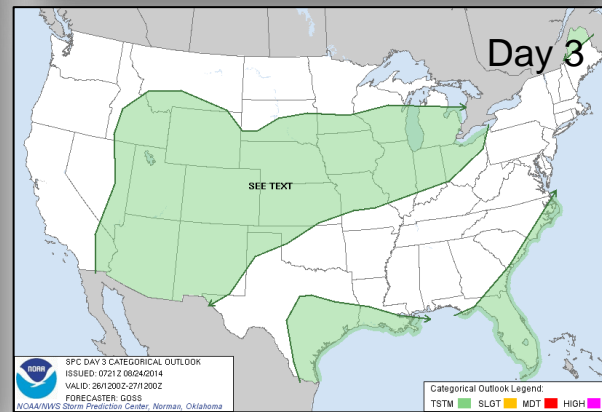
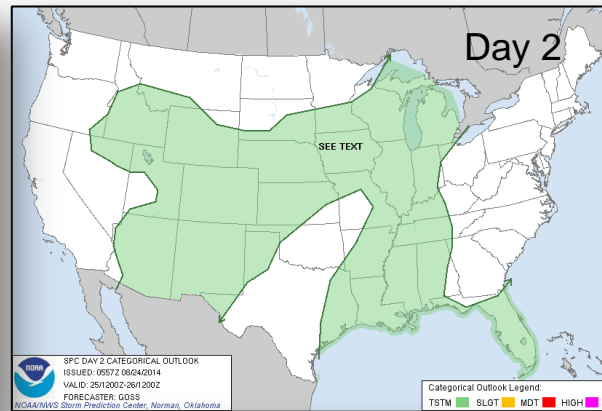
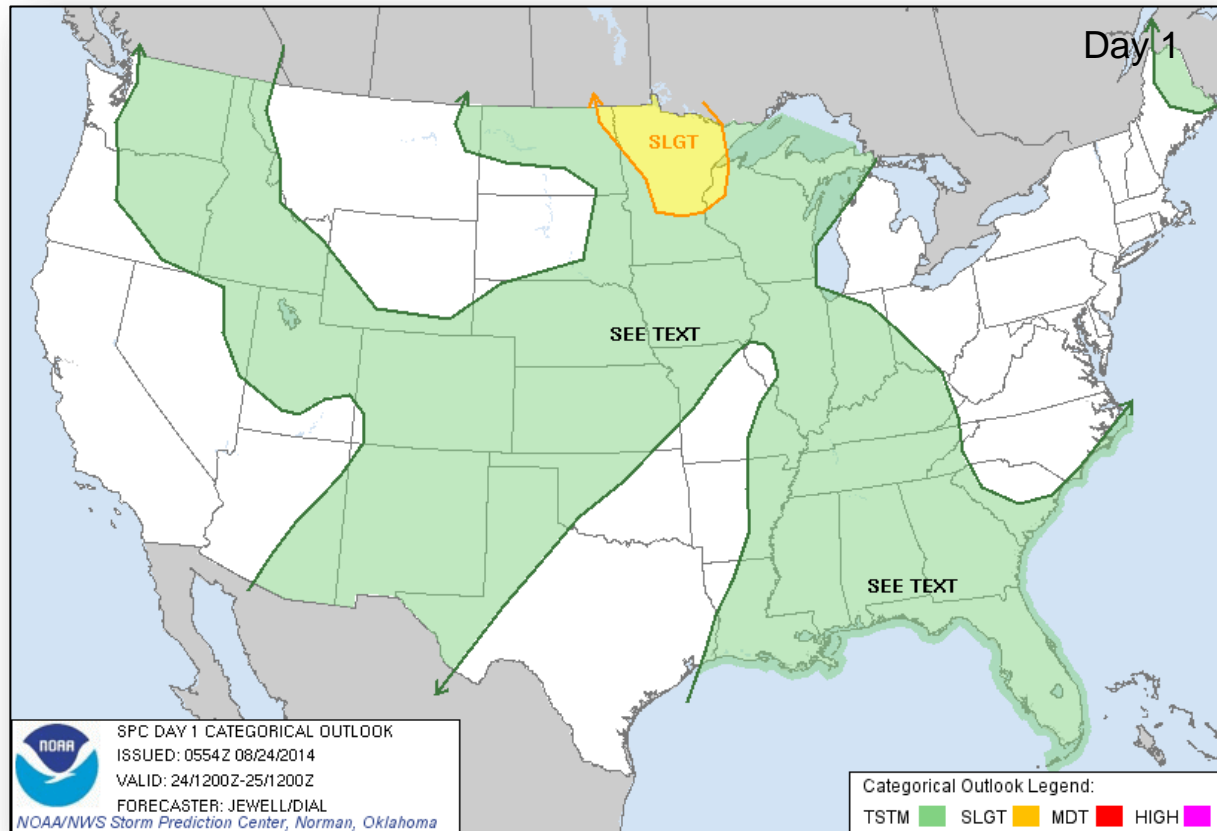


Day 3

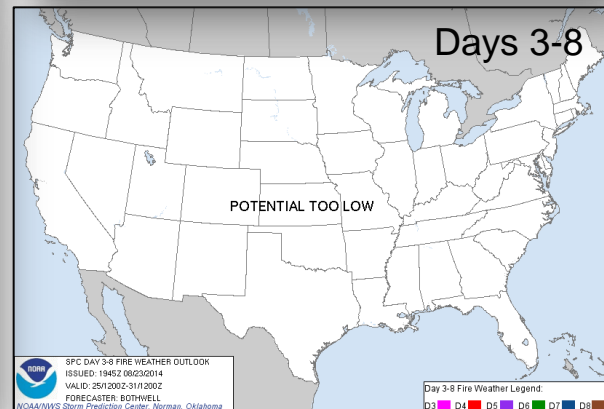
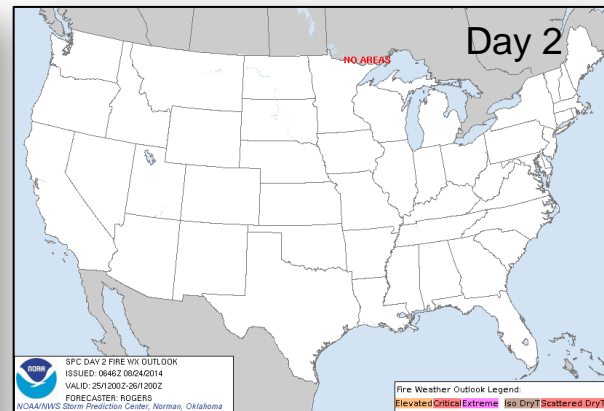
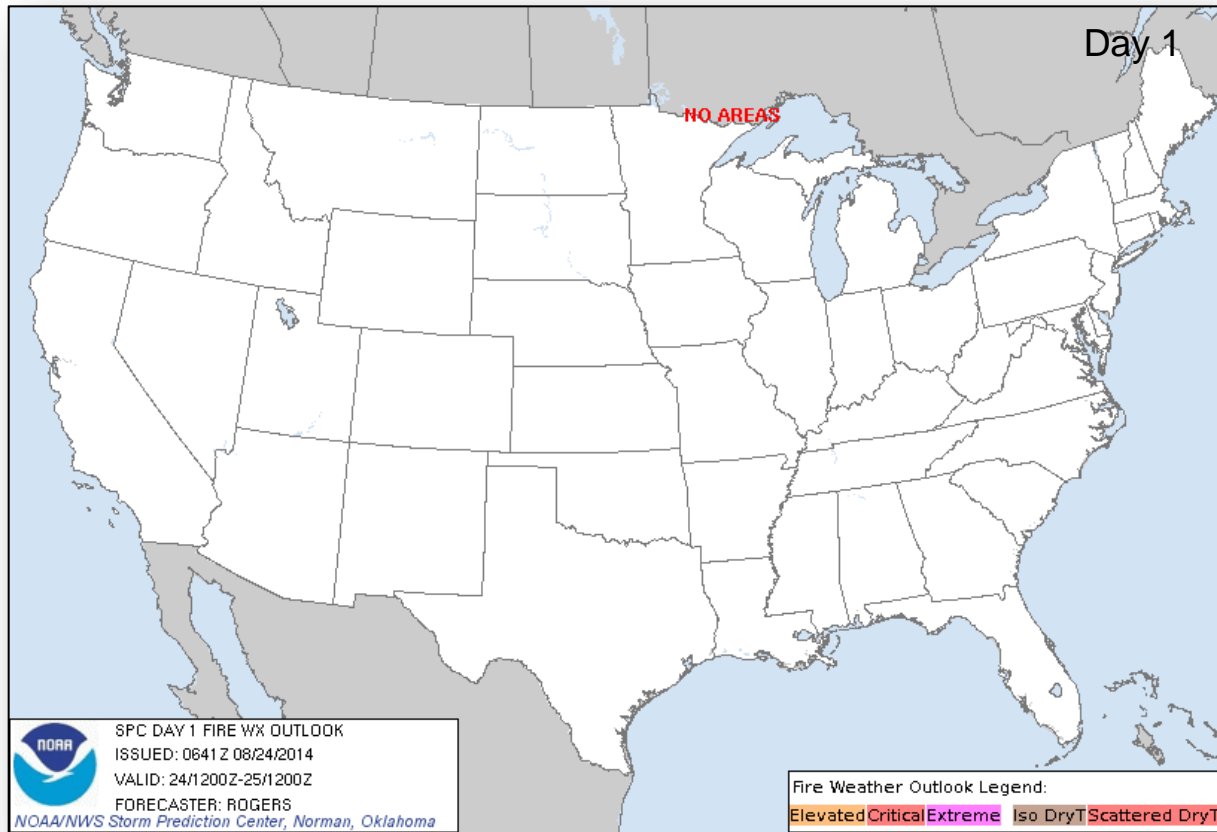
River Forecast



Convective Outlook, Days 1 – 3

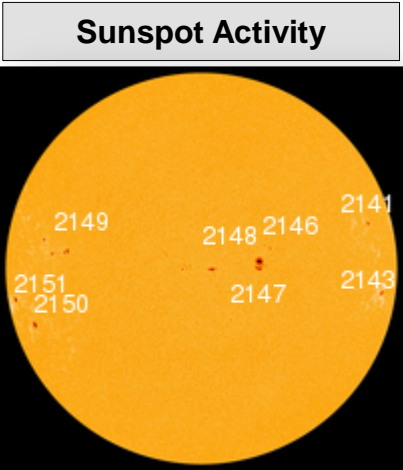
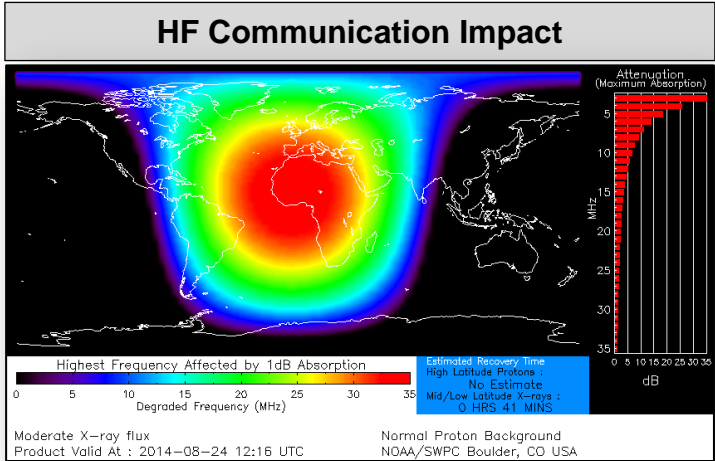


Fire Weather Outlook, Days 1 – 8



Space Weather

NOAA Scales Activity (Range: 1/minor to 5/extreme)	Past 24 Hours	Current	Next 24 Hours
Space Weather Activity:	None	None	None
• Geomagnetic Storms	None	None	None
• Solar Radiation Storms	None	None	None
• Radio Blackouts	None	None	None



FEMA Readiness – Deployable Teams/Assets



Deployable Teams/Assets									
Resource	Status	Total	Available		Partially Available	Not Available	Detailed Deployed Activated	Comments	Rating Criterion
FCO		39	17	44%	0	1	21		OFDC Readiness: FCO Green Yellow Red Type 1 3+ 2 1 Type 2 4+ 3 2 Type 3 4 3 2 <u>FDRC</u> 3 2 1
FDRC		10	5	50%	0	0	5		
US&R		28	26	93%	1	1	0	<ul style="list-style-type: none">NM-TF1 (Red for personnel shortages)CA-TF1 (Yellow for logistics & management)	<ul style="list-style-type: none">Green = Available/FMCYellow = Available/PMCRed = Out-of-ServiceBlue = Assigned/Deployed
National IMAT		3	3	100%	0	0	0		<ul style="list-style-type: none">Green: 3 availYellow: 1-2 availRed: 0 avail (<i>Individual N-IMAT red if 50% of Section Chiefs and/or Team Leader is unavailable for deployment.</i>)
Regional IMAT		13	4	31%	3	4	2	<u>Partially Mission Capable (PMC):</u> <ul style="list-style-type: none">Region II, III, VI (Team 1) <u>Not Mission Capable (NMC):</u> <ul style="list-style-type: none">Region V, VI (Team 2), VII, IX (Team 1), <u>Deployed</u> <ul style="list-style-type: none">Region X to WARegion VIII to ND	<ul style="list-style-type: none">Green: 7 or more availYellow: 4 - 6 teams availableRed: > 8 teams deployed/unavailable <i>R-IMAT also red if TL Ops/Log Chief is unavailable and has no qualified replacement.</i>
MCOV		54	47	87%	0	7	0		<ul style="list-style-type: none">Green = 80 – 100% availYellow = 60 – 79% availRed = 59% or below availReadiness remains 95%

FEMA Readiness – National/Regional Teams



National/Regional Teams									
Resource	Status	Total	Available		Partially Available	Not Available	Deployed/ Activated	Comments	Rating Criterion
NWC		5	5	100%	0	0	24/7	Enhanced Watch (UC UCG)	• Green = FMC • Yellow = PMC • Red = NMC
NRCC		2	344	89%	0	44	Not Activated		
HLT		1	N/A	N/A	0	1	Activated		
DEST							Not Activated		
RRCCs		10	10	100%	0	0	0		
RWCs/MOCs		10	10	100%	0	0	24/7	Region II RWC at Enhanced Watch	



FEMA

FEMA's mission is to support our citizens and first responders to ensure that as a nation we work together to build, sustain, and improve our capability to prepare for, protect against, respond to, recover from, and mitigate all hazards.