



# **FEMA**

## **Daily Operations Briefing**

**Monday, August 25, 2014**

**8:30 a.m. EDT**

# Significant Activity: August 23 – 24



**Significant Events:** South Napa Earthquake – CA

**Tropical Activity:**

- Atlantic – Tropical Storm Cristobal; Disturbance 1 – Low (near 0%)
- Eastern Pacific – Tropical Storm Karina; Hurricane Marie (CAT 4)
- Central Pacific – No tropical cyclones expected through late Tuesday night

**Significant Weather:**

- Heavy rainfall – Desert Southwest into Four Corners
- Thunderstorms and flash flooding – Central Plains to Middle Mississippi Valley
- Excessive Heat Warnings and Advisories – Middle Mississippi and Ohio valleys
- Elevated Fire Weather Areas: none
- Red Flag Warnings: ID
- Space Weather – Past 24 hours Moderate with R2 radio blackouts; next 24 hours: none predicted

**Earthquakes:** M6.0 Napa, CA; M6.9 Tambo, Peru

**FEMA Readiness:** No change

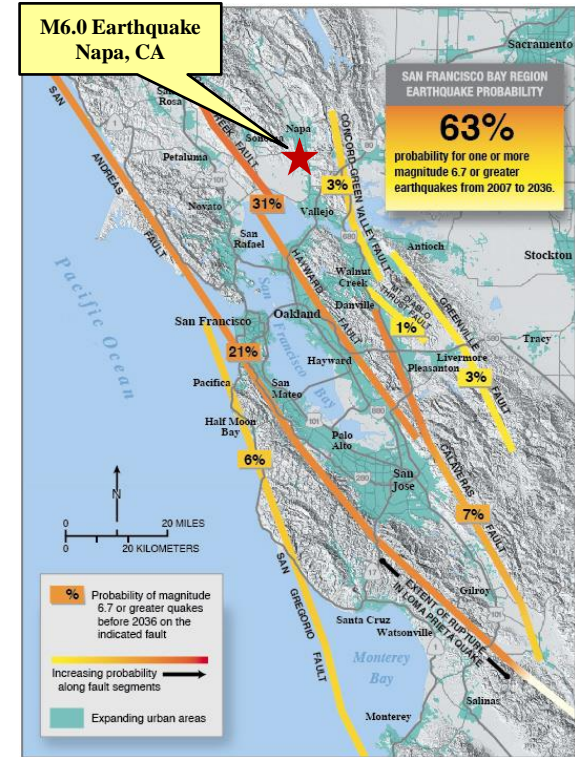
**Declaration Activity:**

- Major Disaster Declaration request for Hawaii
- FMAG Approved for Oregon Fire, CA

# South Napa Earthquake - CA

## Current Situation

- Magnitude 6.0 earthquake occurred at 6:20 a.m. EDT, August 24, 2014, 6 miles SSW of Napa, CA at a depth of 6.7 miles
- Numerous aftershocks have been reported and are expected to continue
- Upgraded to Red PAGER alert for economic losses – extensive damage probable and disaster likely widespread; estimated population exposed to severe shaking was 66k (MMI – VIII)
- Earthquake located between two major active fault systems – Hayward-Rodgers Creek Fault system and Concord-Green Valley Fault system
- Note that the Hayward-Rodgers Creek Fault system has a 31% probability of generating a large (M6.7 earthquake) by 2036.



# South Napa Earthquake - CA



## Impacts

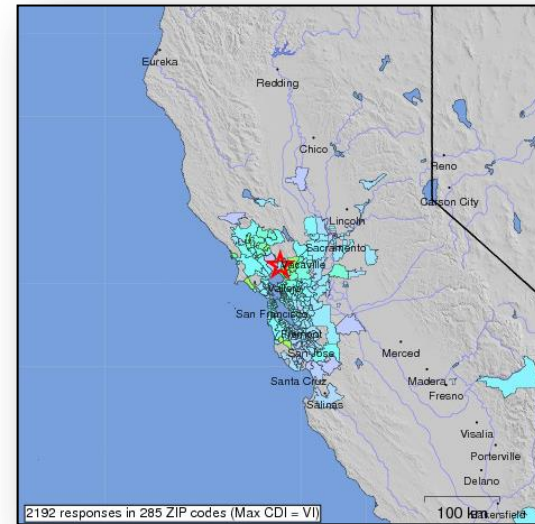
- 172 injuries in Napa County; 20 injuries in Solano County; no preliminary reports of fatalities
- Approx. 600 (peak 65k) customers remain without power in Napa and Sonoma counties\*
- Damage assessments ongoing; reports of partial structural collapses, multiple structure fires, 50 gas leaks and 72 water main breaks (cities of Napa & Vallejo); over 90 homes red tagged in Napa County
- Transportation: road closures lifted yesterday; Napa Air Traffic Control Tower not operational due to damage; however flights have resumed; limited rail traffic has resumed following track inspections
- One shelter open with 9 occupants *(ARC Midnight Shelter County, 4:27 am EDT, August 25)*

## Local/State Response

- Governor declared state of emergency
- CA EOC at Full Activation; CA Inland Regional EOC (REOC) at Full Activation
- Two US&R Task Forces deployed to CA as state asset have been released

## Federal Response

- Region IX RWC at Enhanced Watch; RRCC at Level III, 24/7
- LNOs deployed to CA EOC (24/7) and REOC (day only)
- National IMAT West deployed to CA EOC
- Joint IA/PA PDAs will begin this week



*\*(DOE EAGLE-I as of 7:30 am EDT, August 25; comprehensive National coverage of all electrical service providers is not available)*

# Earthquake Activity – International



## **M 6.9 – Peru (downgraded from M7.0)**

- Occurred at 7:21 pm EDT on August 24, 2014
- 290 miles SE from Lima, Peru
- Depth of 62.8 miles
- USGS issued a Green PAGER alert – low likelihood of casualties and damage
- Level VI on Modified Mercalli scale – 15k exposed to strong shaking
- No reports of injury or damage
- No tsunami threat; earthquake occurred on land

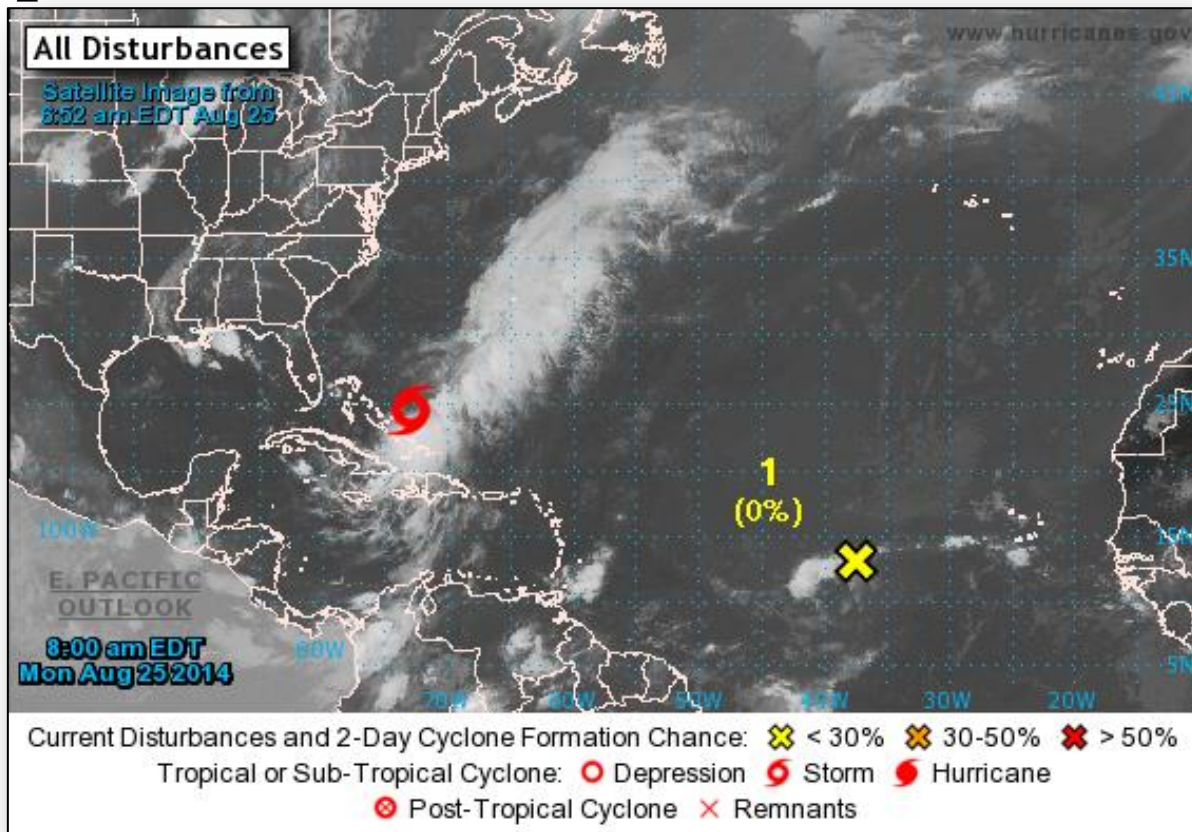
Estimated <a href="#">Modified Mercalli Intensity</a>		I	II-III	IV	V	VI	VII	VIII	IX	X
Est. Population Exposure		--*	2,837k*	3,047k	254k	15k	0k	0k	0k	0k
Perceived Shaking		Not Felt	Weak	Light	Moderate	Strong	Very Strong	Severe	Violent	Extreme
Potential Structure Damage	Resistant	none	none	none	V.Light	Light	Moderate	Moderate/Heavy	Heavy	V.Heavy
	Vulnerable	none	none	none	Light	Moderate	Moderate/Heavy	Heavy	V.Heavy	V.Heavy



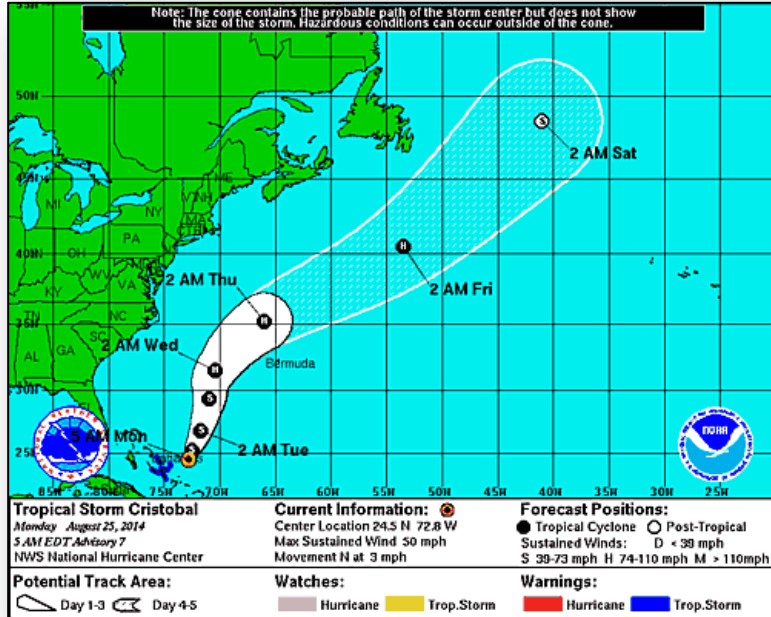
# 2-Day Tropical Outlook – Atlantic



FEMA



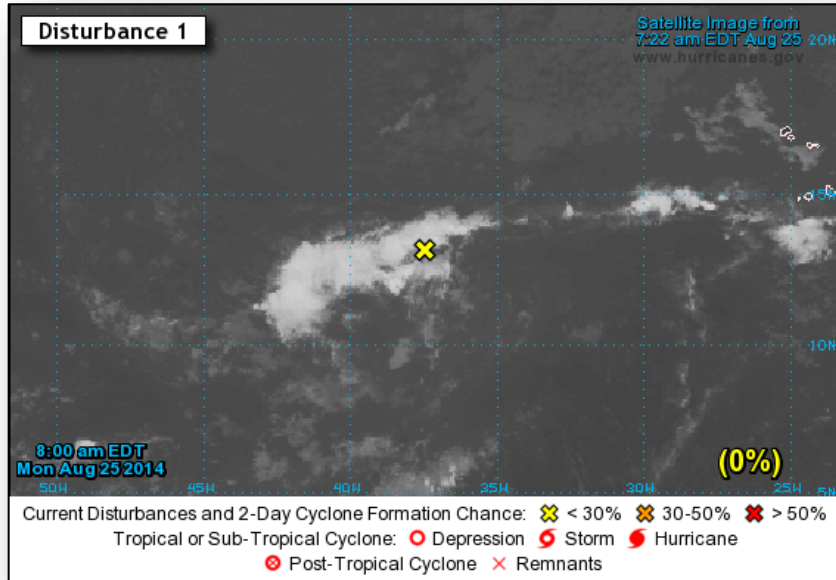
# Tropical Storm Cristobal – Atlantic



## Tropical Storm Cristobal (as of 8:00 a.m. EDT)

- Located 115 miles ENE of San Salvador
- Moving N at 3 mph
- A turn NNE at slightly faster forward speed expected later today; forecast to move away from Bahamas through tonight
- Maximum sustained winds 60 mph
- Gradual strengthening forecast next 48 hours
- Could become a hurricane in a couple of days
- Tropical storm force winds extend 140 miles

# Disturbance 1 – Atlantic



## **Disturbance 1 (as of 8:00 a.m. EDT)**

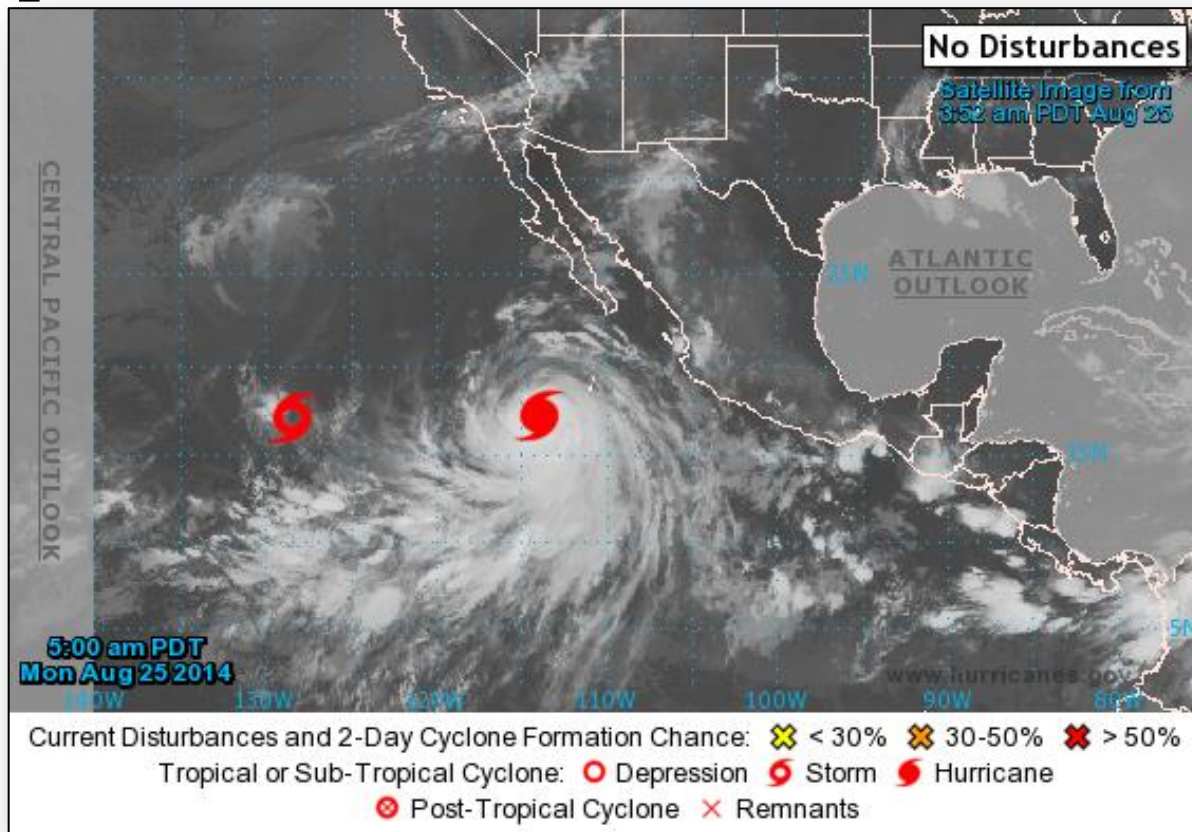
- Located 1,100 miles WSW of Cape Verde Islands
- Moving WNW at 15 mph
- Conditions could become more conducive by end of the week
- Formation chance:
  - Next 48 hours: Low (near 0%)
  - Next 5 days: Medium (30%)



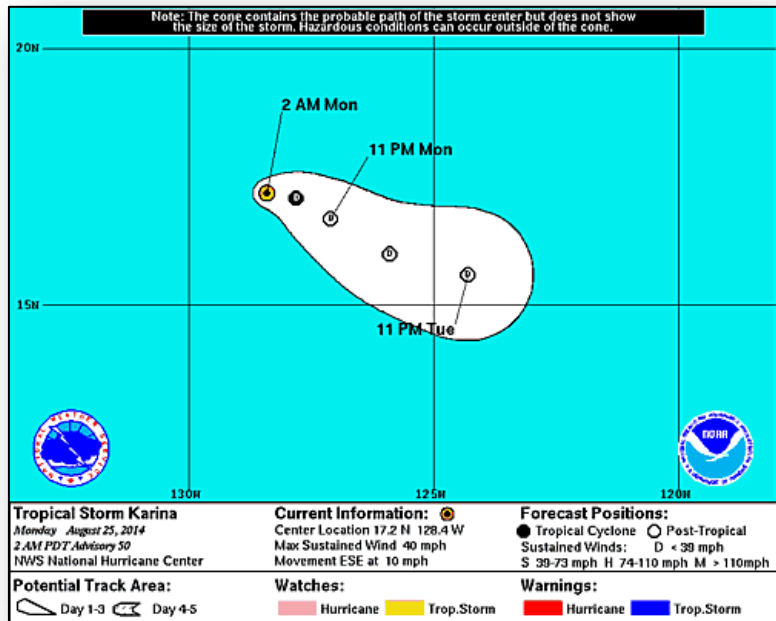
# 2-Day Tropical Outlook – Eastern Pacific



FEMA



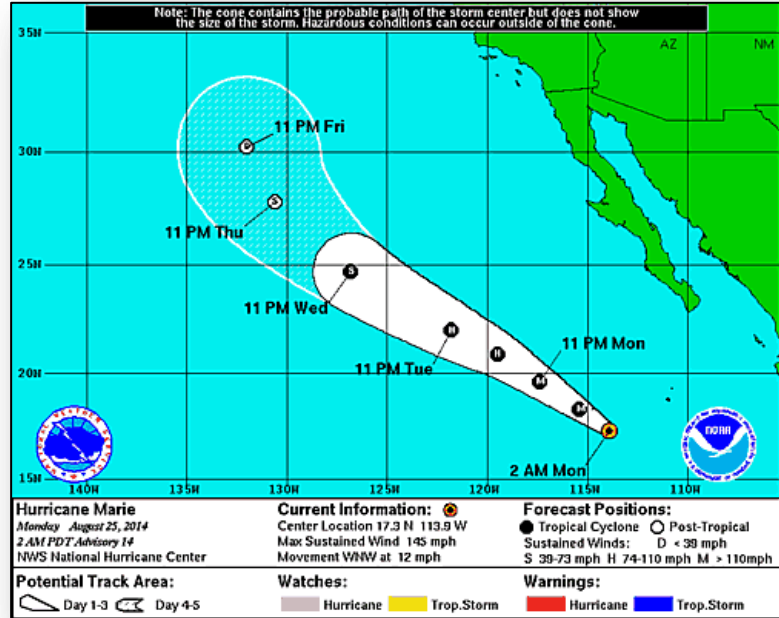
# Tropical Storm Karina – Eastern Pacific



## Tropical Storm Karina (as of 5:00 a.m. EDT)

- Located 1,260 miles WSW of southern tip of Baja California, Mexico
- Moving ESE at 10 mph
- This general motion expected during next couple of days
- Maximum sustained winds 40 mph
- Additional weakening forecast
- Expected to become tropical depression today and weaken to remnant low tonight or Tuesday morning
- Tropical storm force winds extend 70 miles

# Hurricane Marie – Eastern Pacific



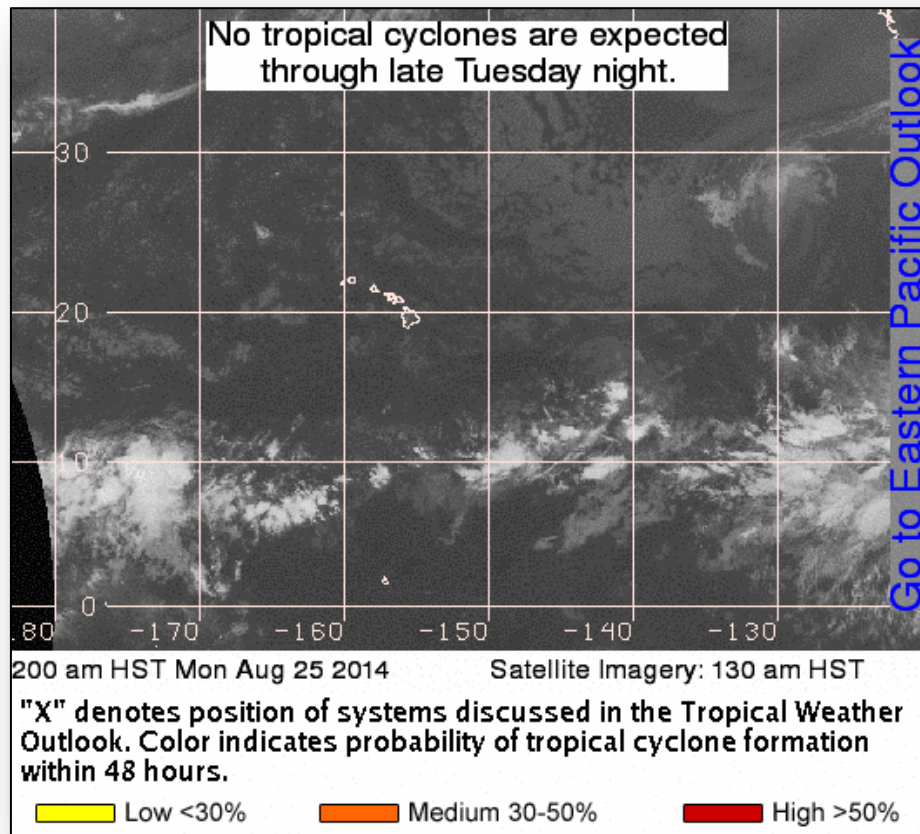
## Hurricane Marie (as of 5:00 a.m. EDT)

- Located 215 miles SSW of Socorro Island
- Moving WNW at 12 mph
- This motion with slight increase in forward speed expected next couple of days
- Maximum sustained winds 145 mph (Category 4 hurricane)
- Forecast to fall below major hurricane strength late Tuesday
- Hurricane force winds extend outward 60 miles
- Tropical storm force winds extend 310 miles

# 2-Day Tropical Outlook – Central Pacific



FEMA



# FMAG Requests and Declarations



Action (since last report)			Total	FMAG No. and State	
Requests DENIED			0		
Requests APPROVED			1	Oregon Fire, CA FEMA 5076-FM-CA	
Approved FMAG Data					
Year	Current YTD	MTD	Monthly Average	Cumulative Acres Burned YTD	Cumulative Denied FMAGs YTD
2014	25	10	12	130,208	1
Year	Total Previous FY	++ Yearly Average		Total Acres Burned Previous Year	Total Denied FMAGs Previous Year
2013	29	64		374,417	8
* Reflects the 3-year average for current month/ ** Reflects 3-year total average					

# Oregon Fire – California



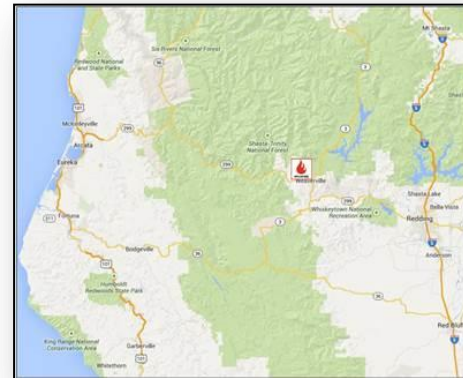
Fire Name	Location	Acres burned	% Contained	Est. Full Containment	FMAG	Structures Lost / Threatened	Fatalities / Injuries
Oregon Fire	Trinity County	650	0%	N/A	5076-FM-CA	1/ 520 (500 homes)	0 / 1

## Situation

- Began August 24, 2014 in and around community of Weaverville (pop 1k), Trinity County (pop 13k)
- Burning on State and private land
- Mandatory evacuations in effect for 375 residents; voluntary evacuations in effect for 375 residents
- Also threatening electrical infrastructure, water treatment plant and watershed
- 1 shelter open with 10 occupants (*ARC Midnight Shelter County, 4:27 am EDT, August 25*)
- 357 firefighting personnel
- FMAG approved August 25, 2014

## Response

- CA EOC is at Full Activation (for South Napa earthquake)
- FEMA Region IX RWC at Enhanced Watch; RRCC at Level III (for South Napa earthquake)



Trinity County



# Wildfire Summary



Fire Name (County)	FMAG #	Acres Burned	% Contained <small>Est. Containment date</small>	Evacuations (Residents)	Structures Threatened	Structures Destroyed	Fatalities / Injuries
Oregon (1)							
Oregon Fire (Trinity County)	Approved 25, 2014 5076-FM-CA	650	0%	Mandatory	520	1	0 / 1

# Disaster Requests & Declarations



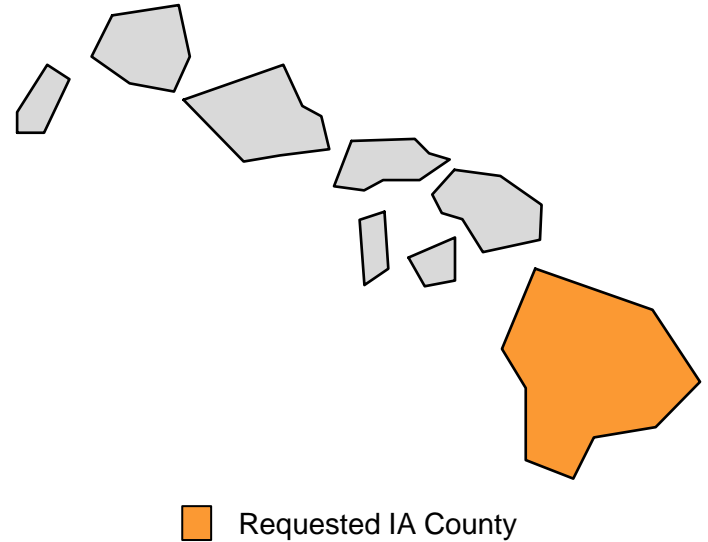
Declaration Requests in Process		Requests APPROVED (since last report)	Requests DENIED (since last report)
1	Date Requested	0	0
HI – DR for Tropical Storm Iselle	August 21, 2014		

# Major Disaster Declaration Request – Hawaii

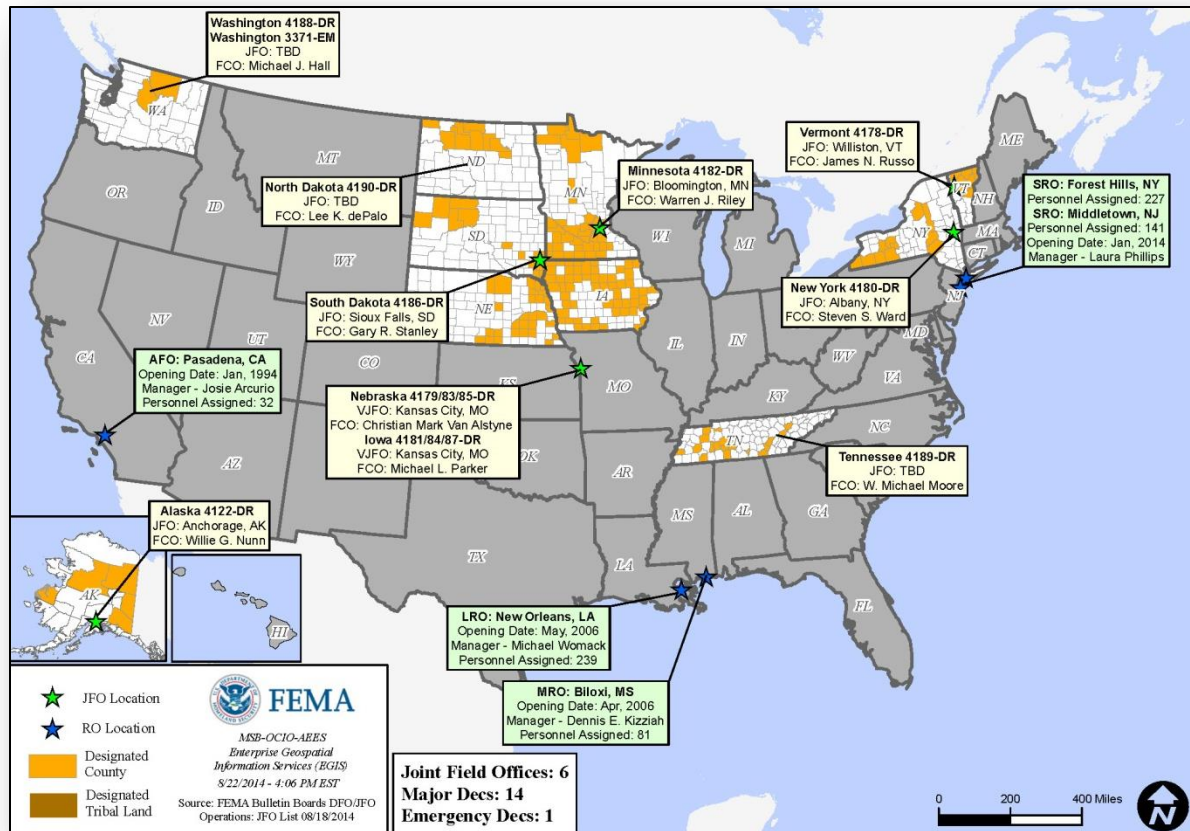


## August 21, 2014

- Request for Major Disaster Declaration for the State of Hawaii
- For Tropical Storm Iselle that occurred during the period August 7-9, 2014
- Requesting:
  - Individual Assistance for Hawaii County
  - Hazard Mitigation statewide



# Open Field Offices as of August 25, 2014



# Joint Preliminary Damage Assessments

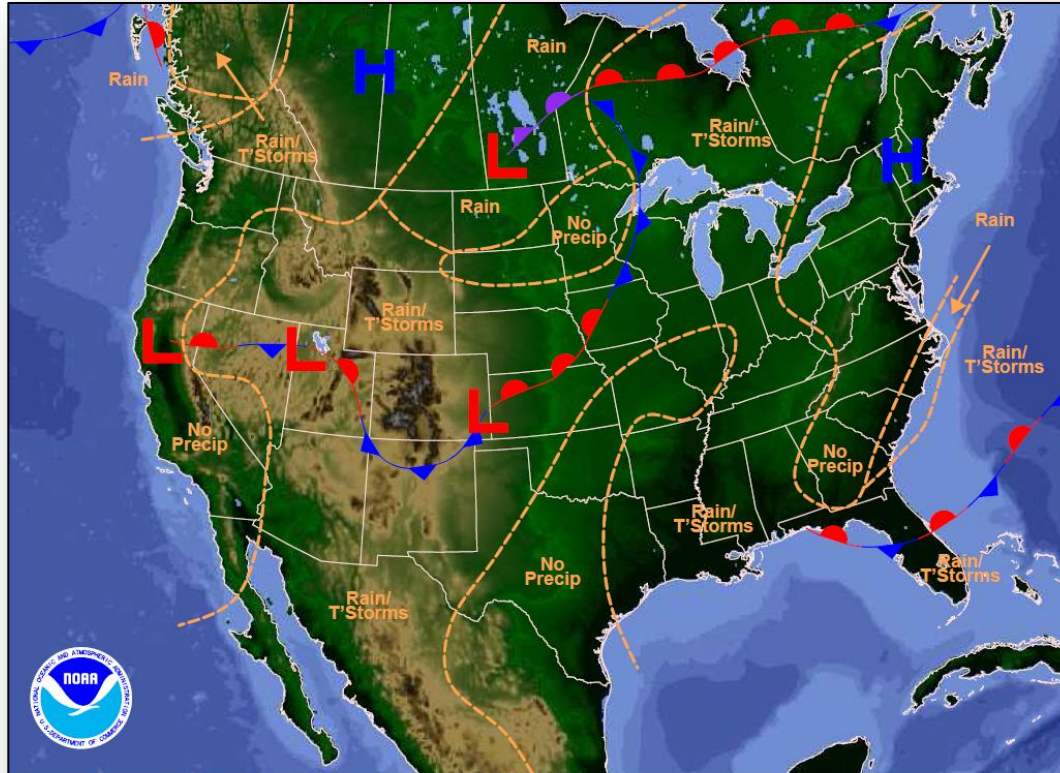


Region	State / Location	Event	IA/PA	Number of Counties		Start – End
				Requested	Complete	
II	New York	Heavy Rainfall & Flooding August 12-13, 2014	PA	1	1	8/20 - 8/22
			IA	1	1	8/20 – 8/22
V	Michigan	Heavy Rainfall & Flooding August 11-12, 2014	PA	3	0	8/26 - TBD
			IA	3	0	9/3 - TBD
IX	Hawaii	Hurricane Iselle August 7-9, 2014	PA	2	0	8/25 - 8/29
			IA	1	1	8/15 – 8/18
IX	CA	Napa Earthquake August 24, 2014	PA	3	0	8/29 - TBD
			IA	3	0	8/29 - TBD

# National Weather Forecast



FEMA



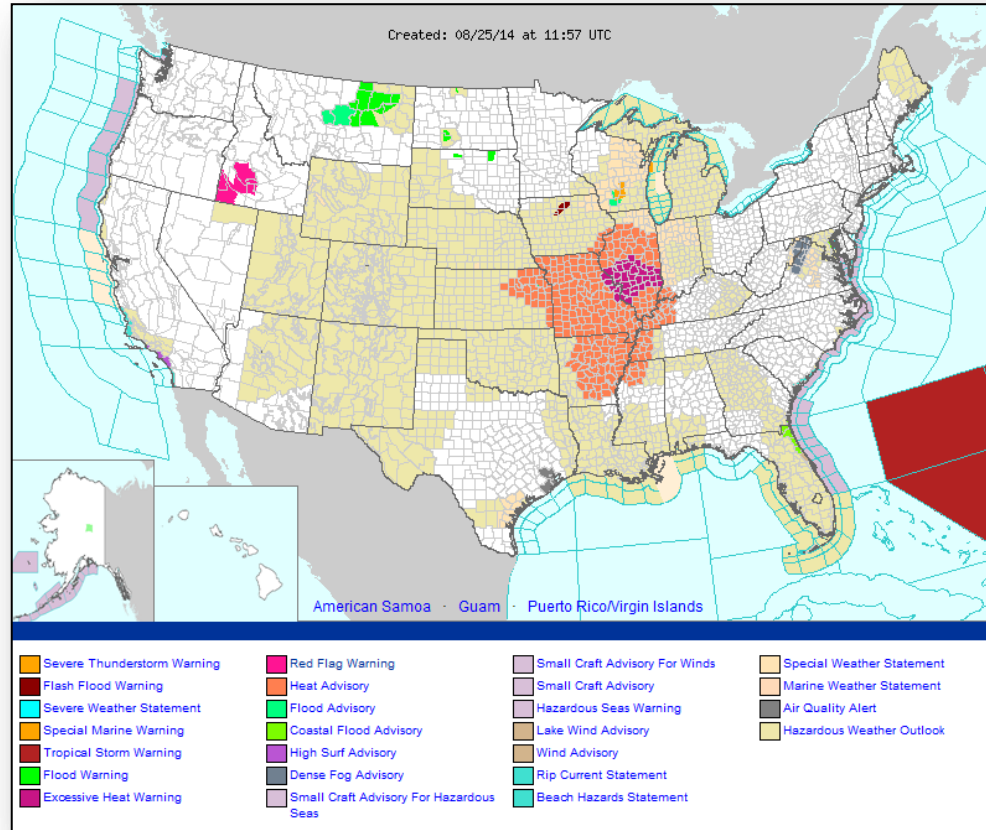
Weather Forecast for Mon, Aug 25, 2014, issued 3:19 AM EDT  
DOC/NOAA/NWS/NCEP/Weather Prediction Center  
Prepared by McCreynolds based on WPC, SPC and NHC forecasts



# Active Watches/Warnings



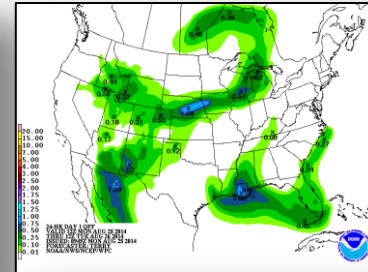
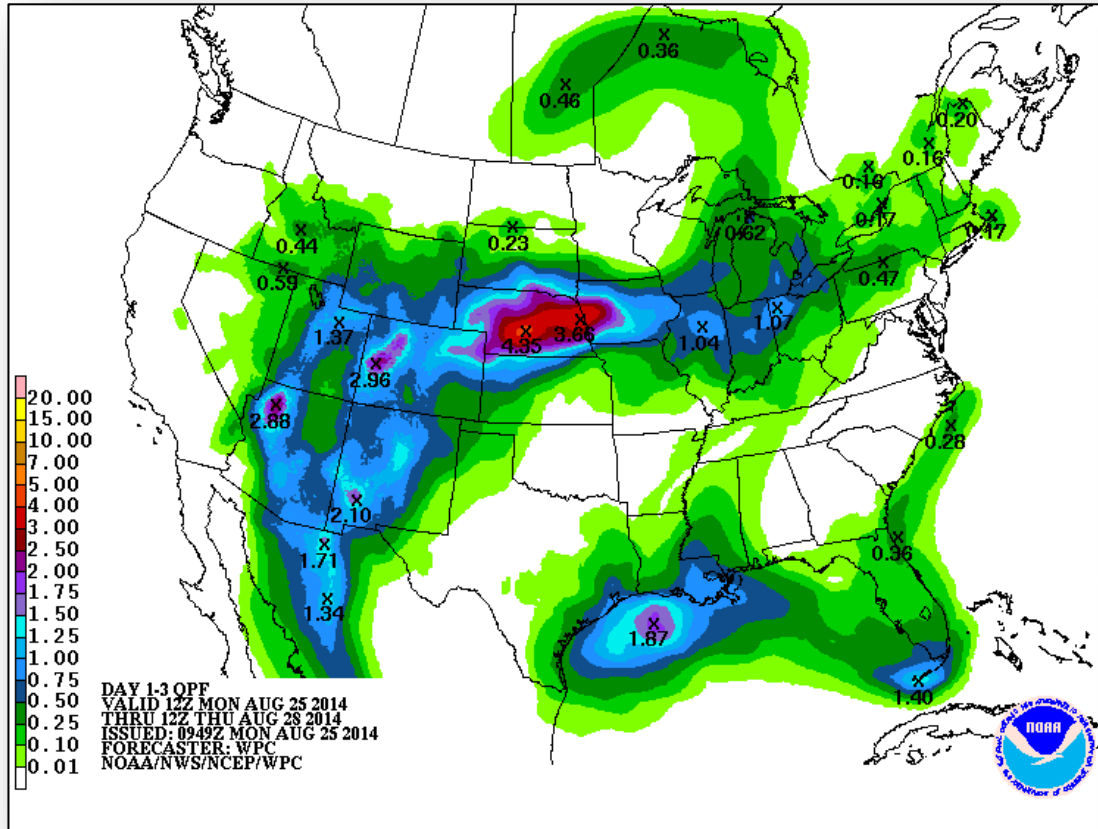
FEMA



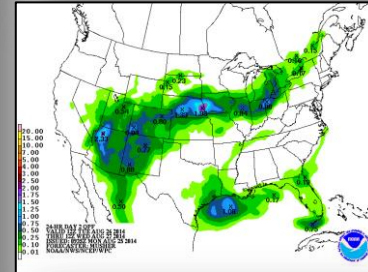
# Precipitation Forecast – 3 Day



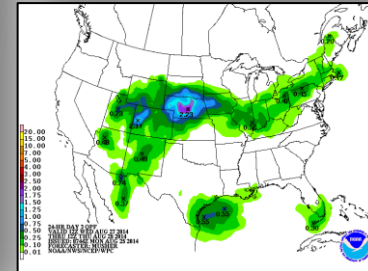
FEMA



Day 1

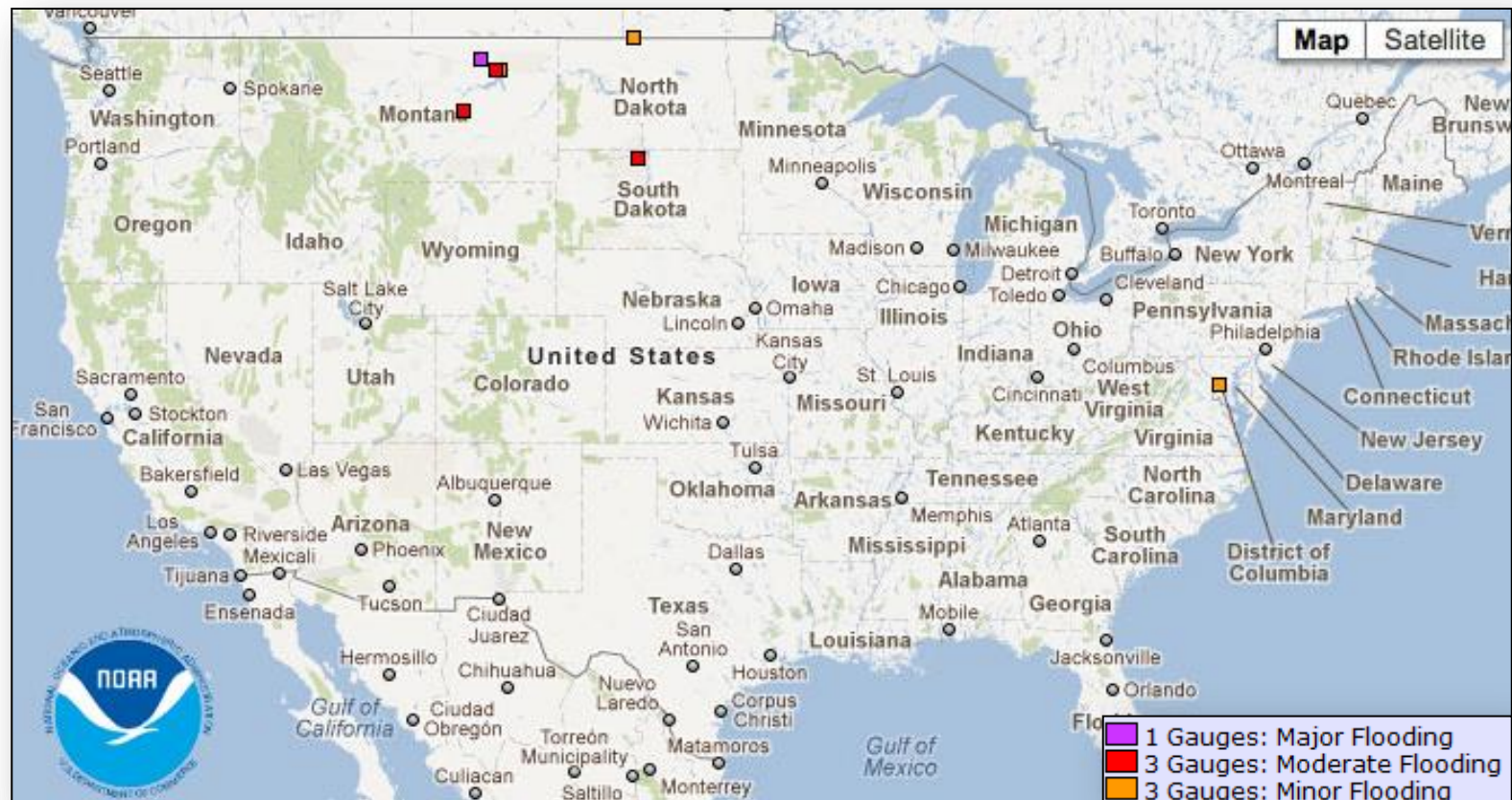


Day 2

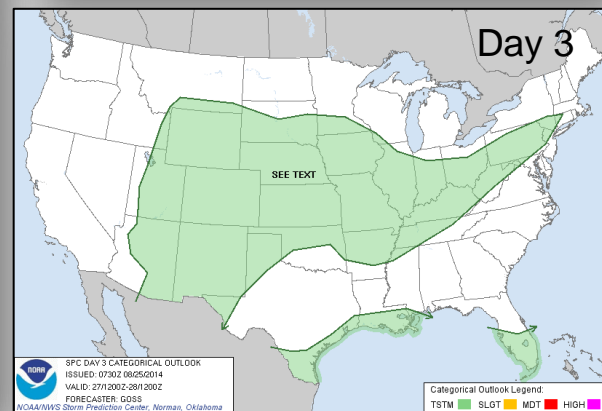
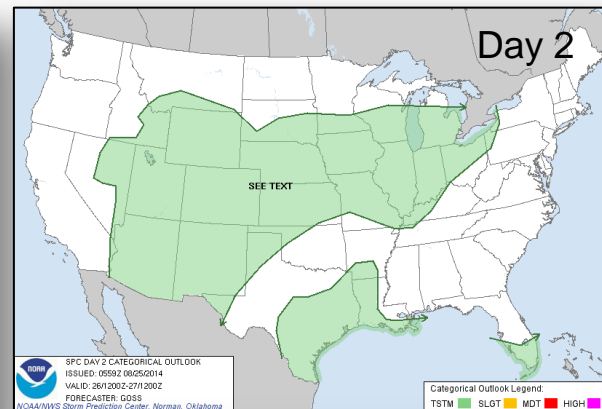
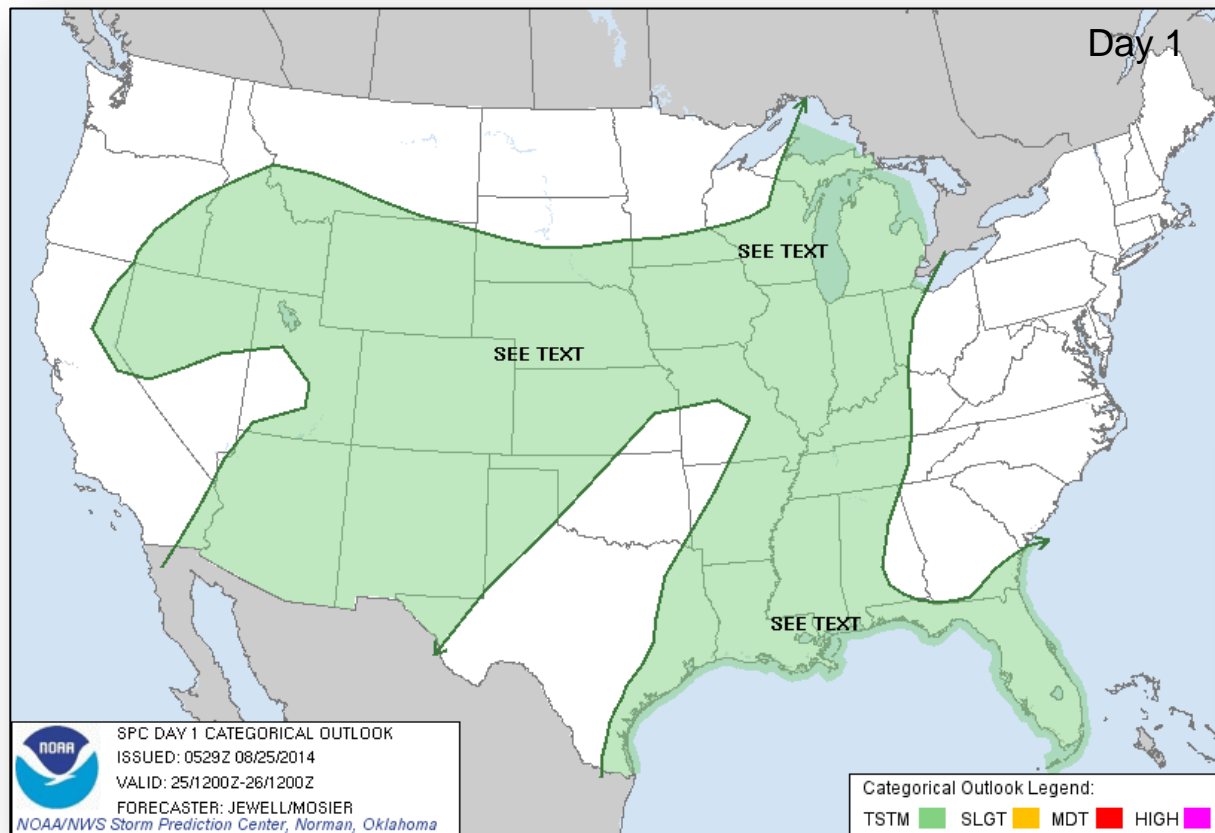


Day 3

# River Forecast



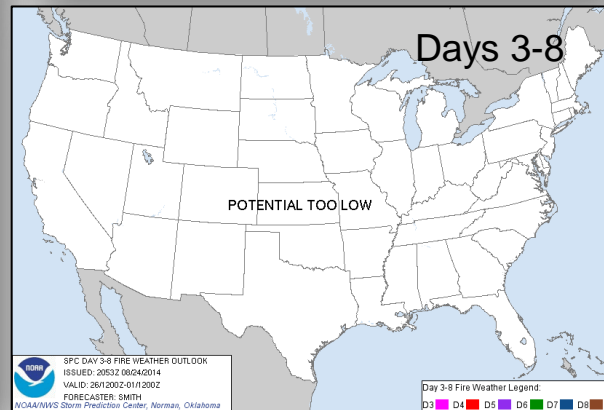
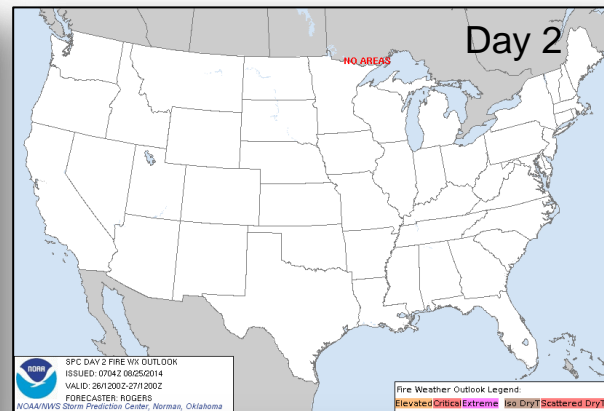
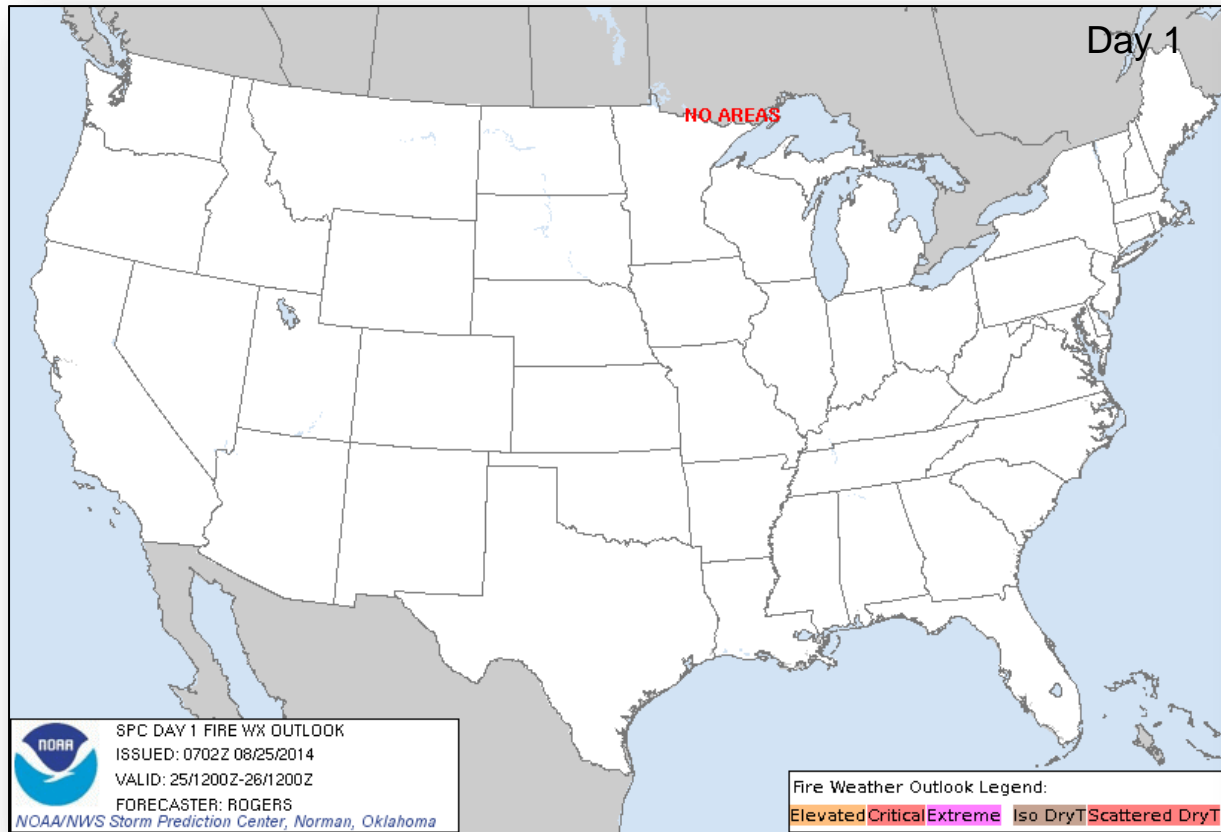
# Convective Outlook, Days 1 – 3



# Fire Weather Outlook, Days 1 – 8



FEMA



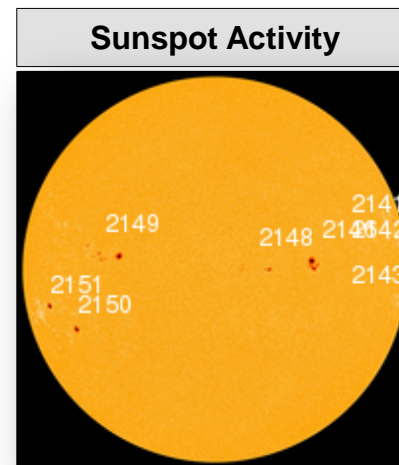
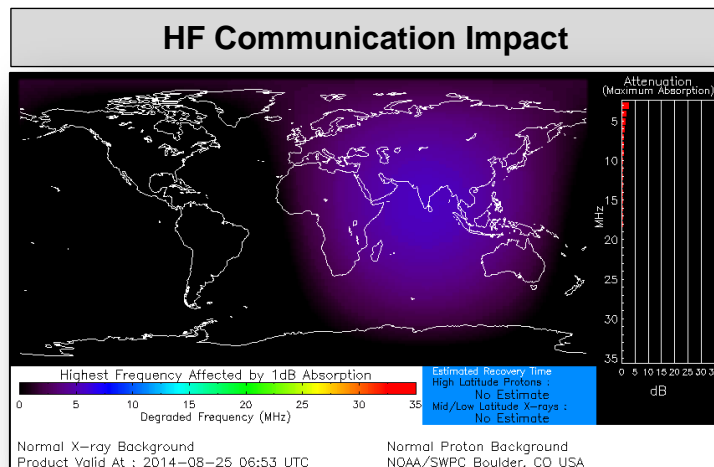


# Space Weather



FEMA

NOAA Scales Activity (Range: 1/minor to 5/extreme)	Past 24 Hours	Current	Next 24 Hours
Space Weather Activity:	Moderate	None	None
• Geomagnetic Storms	None	None	None
• Solar Radiation Storms	None	None	None
• Radio Blackouts	R2	None	None





# FEMA Readiness – Deployable Teams/Assets



Deployable Teams/Assets									
Resource	Status	Total	Available		Partially Available	Not Available	Detailed Deployed Activated	Comments	Rating Criterion
FCO		39	17	44%	0	1	21		OFDC Readiness: FCO   Green   Yellow   Red Type 1   3+   2   1 Type 2   4+   3   2 Type 3   4   3   2  FDRC   3   2   1
FDRC		10	5	50%	0	0	5		
US&R		28	26	93%	1	1	0		<ul style="list-style-type: none"><li>NM-TF1 (Red for personnel shortages)</li><li>CA-TF1 (Yellow for logistics &amp; management)</li></ul>
National IMAT		3	2	67%	0	0	1	<ul style="list-style-type: none"><li>National IMAT West to CA</li></ul>	<ul style="list-style-type: none"><li>Green: 3 avail</li><li>Yellow: 1-2 avail</li><li>Red: 0 avail (<i>Individual N-IMAT red if 50% of Section Chiefs and/or Team Leader is unavailable for deployment.</i>)</li></ul>
Regional IMAT		13	4	31%	3	4	2	<u>Partially Mission Capable (PMC):</u> <ul style="list-style-type: none"><li>Region II, III, VI (Team 1)</li></ul> <u>Not Mission Capable (NMC):</u> <ul style="list-style-type: none"><li>Region V, VI (Team 2), VII, IX (Team 1),</li></ul> <u>Deployed</u> <ul style="list-style-type: none"><li>Region X to WA</li><li>Region VIII to ND</li></ul>	<ul style="list-style-type: none"><li>Green: 7 or more avail</li><li>Yellow: 4 - 6 teams available</li><li>Red: &gt; 8 teams deployed/unavailable</li></ul> <i>R-IMAT also red if TL Ops/Log Chief is unavailable and has no qualified replacement.</i>
MCOV		54	47	87%	0	7	0		<ul style="list-style-type: none"><li>Green = 80 – 100% avail</li><li>Yellow = 60 – 79% avail</li><li>Red = 59% or below avail</li><li>Readiness remains 95%</li></ul>

# FEMA Readiness – National/Regional Teams



National/Regional Teams									
Resource	Status	Total	Available		Partially Available	Not Available	Deployed/ Activated	Comments	Rating Criterion
NWC		5	5	100%	0	0	24/7	Enhanced Watch (UC UCG)	<div>• Green = FMC</div> <div>• Yellow = PMC</div> <div>• Red = NMC</div>
NRCC		2	344	89%	0	44	Not Activated		
HLT		1	N/A	N/A	0	1	Activated		
DEST							Not Activated		
RRCCs		10	10	100%	0	0	1	• Region IX RRCC at Level III	
RWCs/MOCs		10	10	100%	0	0	24/7	• Region II RWC at Enhanced Watch • Region IX RWC at Enhanced Watch	



# FEMA

**FEMA's mission is to support our citizens and first responders to ensure that as a nation we work together to build, sustain, and improve our capability to prepare for, protect against, respond to, recover from, and mitigate all hazards.**