



FEMA

Daily Operations Briefing

Wednesday, August 27, 2014

8:30 a.m. EDT

Significant Activity: August 26 – 27



Significant Events: No significant activity

Tropical Activity:

- Atlantic – Hurricane Cristobal (CAT 1); Disturbance 1 – Low (10%); Disturbance 2 – Low (near 0%)
- Eastern Pacific – Hurricane Marie (CAT 1)
- Central Pacific – No tropical cyclones expected through Thursday night

Significant Weather:

- Slight risk of severe thunderstorms – Central Plains to Ohio Valley
- Flash Flooding possible – Central Plains to Midwest
- Space Weather – Past 24 hours: None; Next 24 hours: Minor

Earthquakes: No significant activity

FEMA Readiness:

- Region IX RWC at Enhanced Watch; National IMAT West remains deployed to CA State EOC

Declaration Activity: No activity

South Napa Earthquake – CA (Final)

Background:

- At 6:20 a.m. EDT, August 24, 2014, a M6.0 earthquake occurred 6 miles SSW of Napa, CA at a depth of 6.7 miles

Impacts:

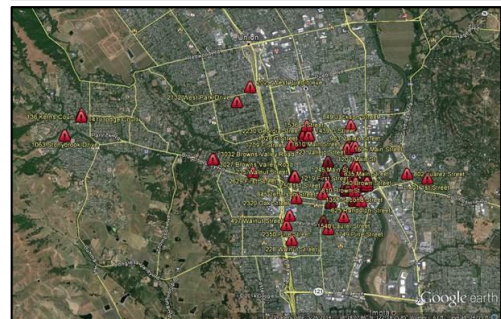
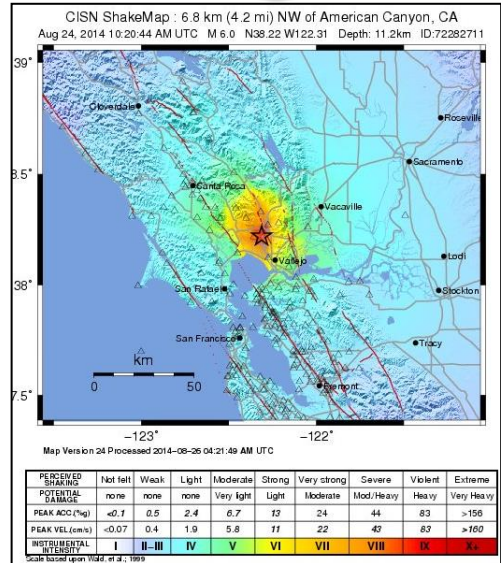
- ▲ 100 buildings Red tagged (uninhabitable); 500 yellow tagged (moderate damage/limited habitability) by the city of Napa
- ▲ Temporary Air Traffic Control Tower was delivered to the Napa Airport
- 216 injuries reported in Napa County; 20 injuries in Solano County; no fatalities
- ▲ Boil water order remains in effect for 500 residents; Initial tests are negative for contamination; 400 residents remain without water service
- ▲ Two shelters open with 23 (+2) occupants (ARC 5:00 am. EDT, August 27)

Local/State Response:

- Governor declared State of Emergency Sunday, August 24
- CA State EOC and County EOCs are Partially Activated (Daytime Only)

Federal Response:

- Region IX RWC at Enhanced Watch; RRCC at Normal Operations
- LNO remains deployed to CA EOC (day shift only)
- National IMAT West remains deployed to CA EOC

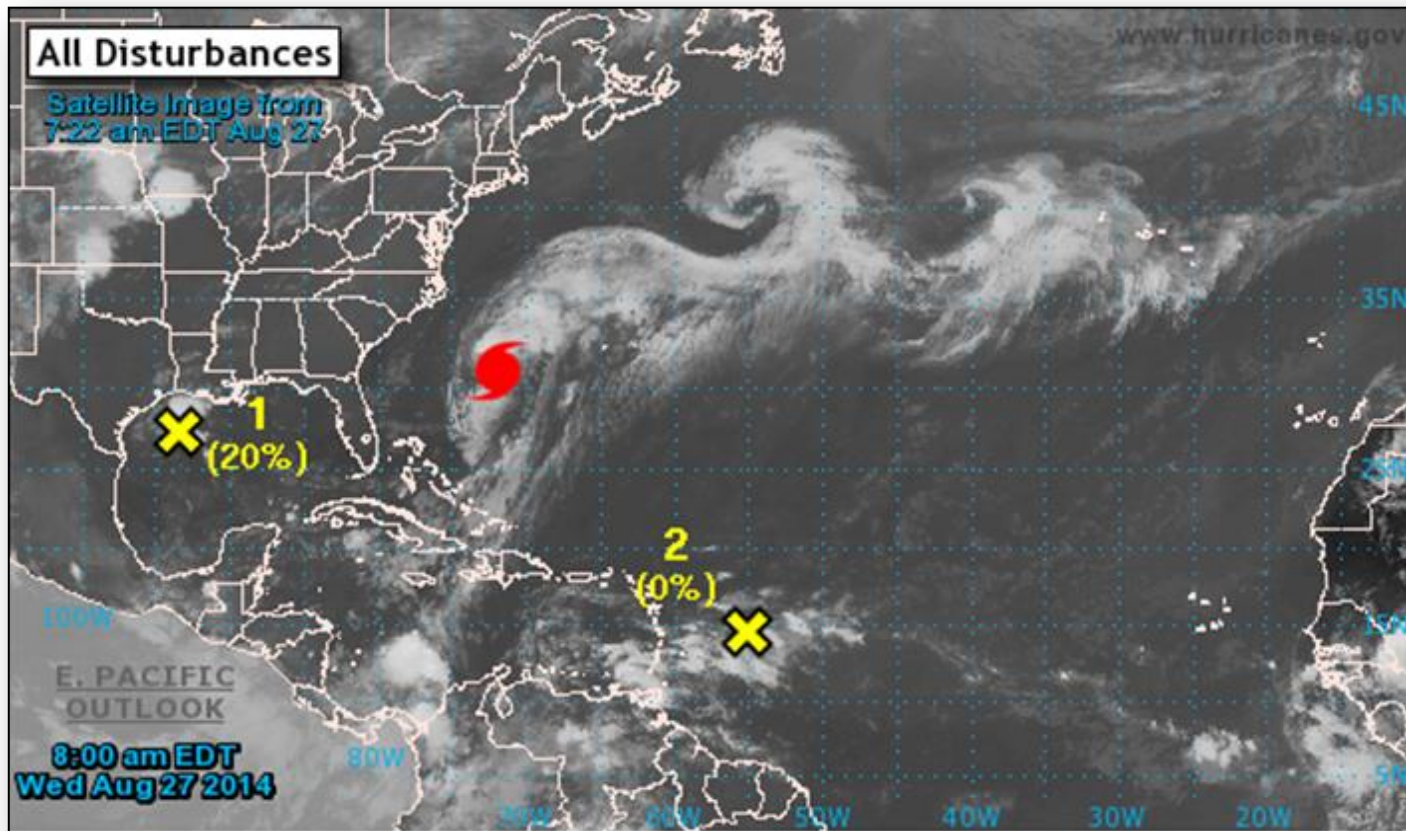


Red tagged buildings in Napa

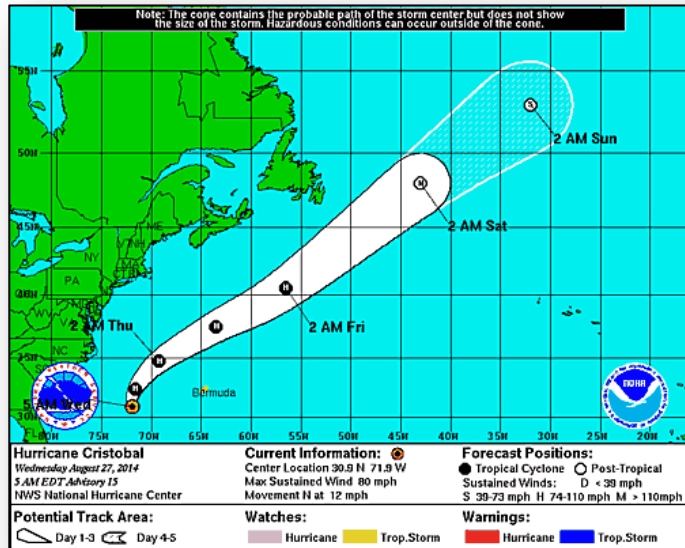
2-Day Tropical Outlook – Atlantic



FEMA



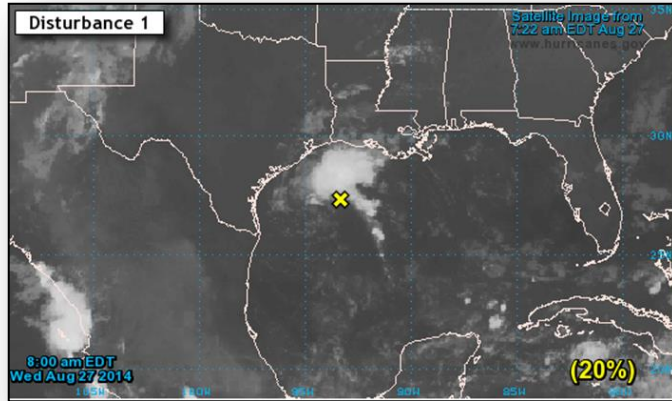
Hurricane Cristobal – Atlantic



Hurricane Cristobal (as of 5:00 a.m. EDT)

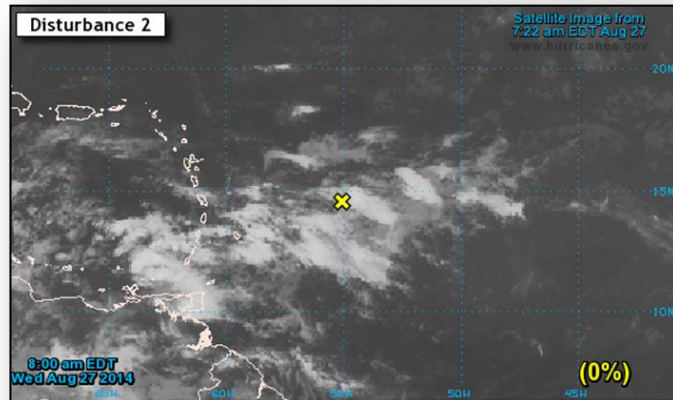
- Located 430 miles WSW of Bermuda
- Moving N at 12 mph
- Maximum sustained winds increased to 80 mph
- A turn toward NNE w/ gradual increase in forward speed is expected over next 48 hours
- Center expected to pass NW of Bermuda later today
- Some strengthening forecast next 48 hours
- Hurricane-force winds extend outward up to 60 miles
- Tropical storm-force winds extend 205 miles
- Swells are affecting portions of the East Coast from central Florida to North Carolina; will spread N over the next few days

Disturbances – Atlantic



Disturbance 1 (as of 8:00 a.m. EDT)

- Shower and thunderstorm activity over the northwestern Gulf of Mexico has increased over the past few hours
- Some additional development is possible before the system moves inland over southern TX/northern NM on Thursday
- Air Force Hurricane Hunter scheduled to investigate the system later today
- Formation chance:
 - Next 48 hours: Low (20%)
 - Next 5 days: Low (20%)



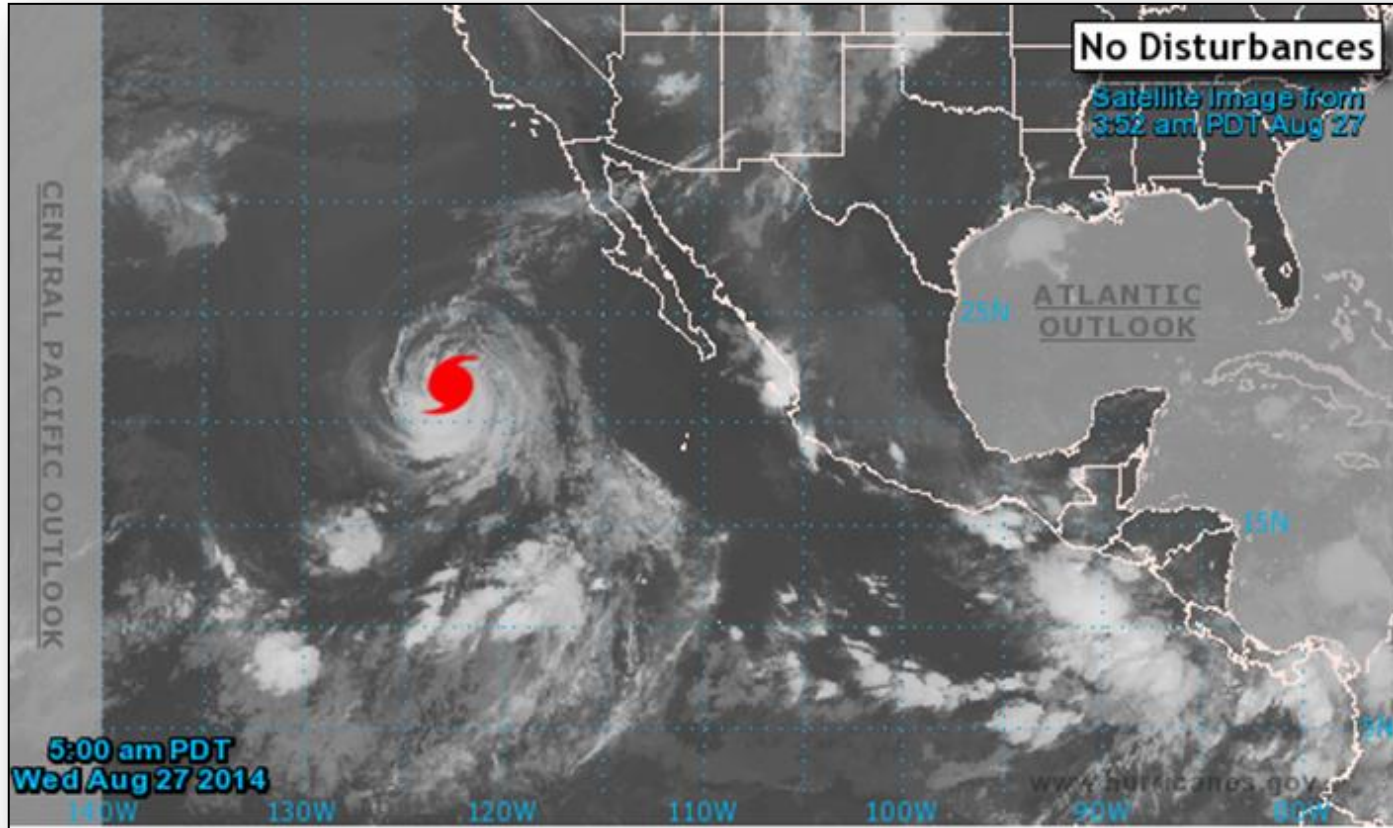
Disturbance 2 (as of 8:00 a.m. EDT)

- Disorganized cloudiness and showers
- Located 600 miles E of Lesser Antilles
- Moving generally West over the next few days
- Conditions could become favorable for development early next week
- Formation chance:
 - Next 48 hours: Low (near 0%)
 - Next 5 days: Low (near 10%)

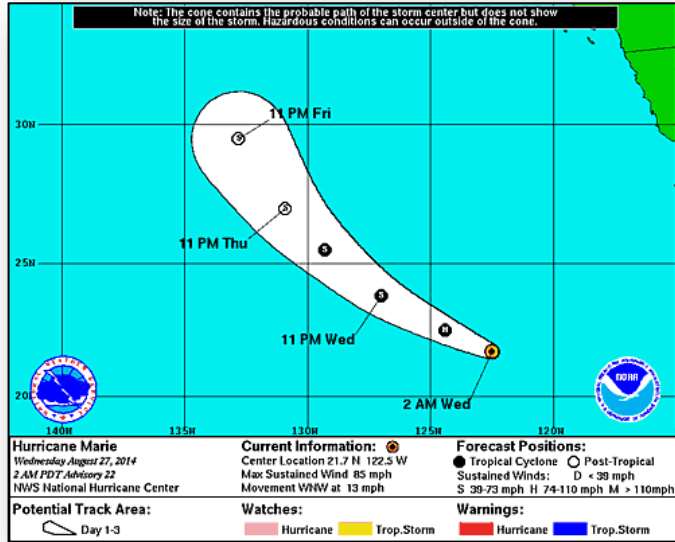
2-Day Tropical Outlook – Eastern Pacific



FEMA



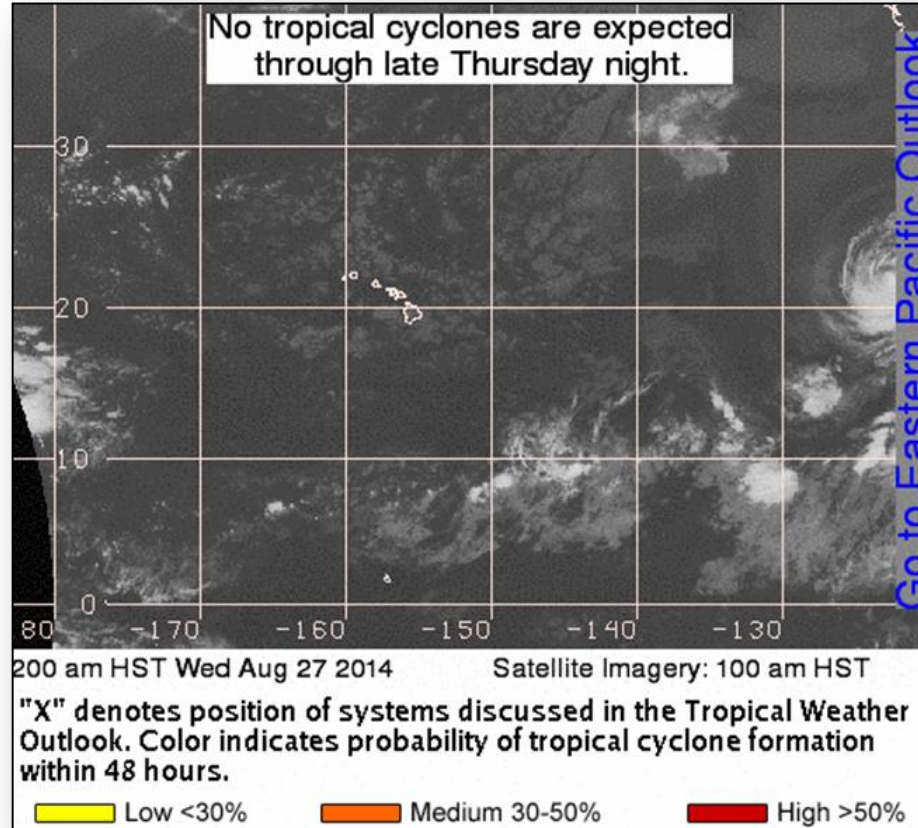
Hurricane Marie – Eastern Pacific



Hurricane Marie (as of 5:00 a.m. EDT)

- Located 1,300 miles W of southern tip of Baja California, Mexico
- Moving WNW at 13 mph
- Maximum sustained winds at 85 mph
- Turn toward NW expected tonight
- Moving over progressively colder waters
- Weakening is forecast during the next 48 hours
- Expected to become a tropical storm today; post tropical Thurs
- Hurricane Force Winds extend outward 60 miles; Tropical Storm Force Winds extend outward 230 miles
- Swells generating life-threatening surf & rip currents in Southern California and minor coastal flooding

2-Day Tropical Outlook – Central Pacific

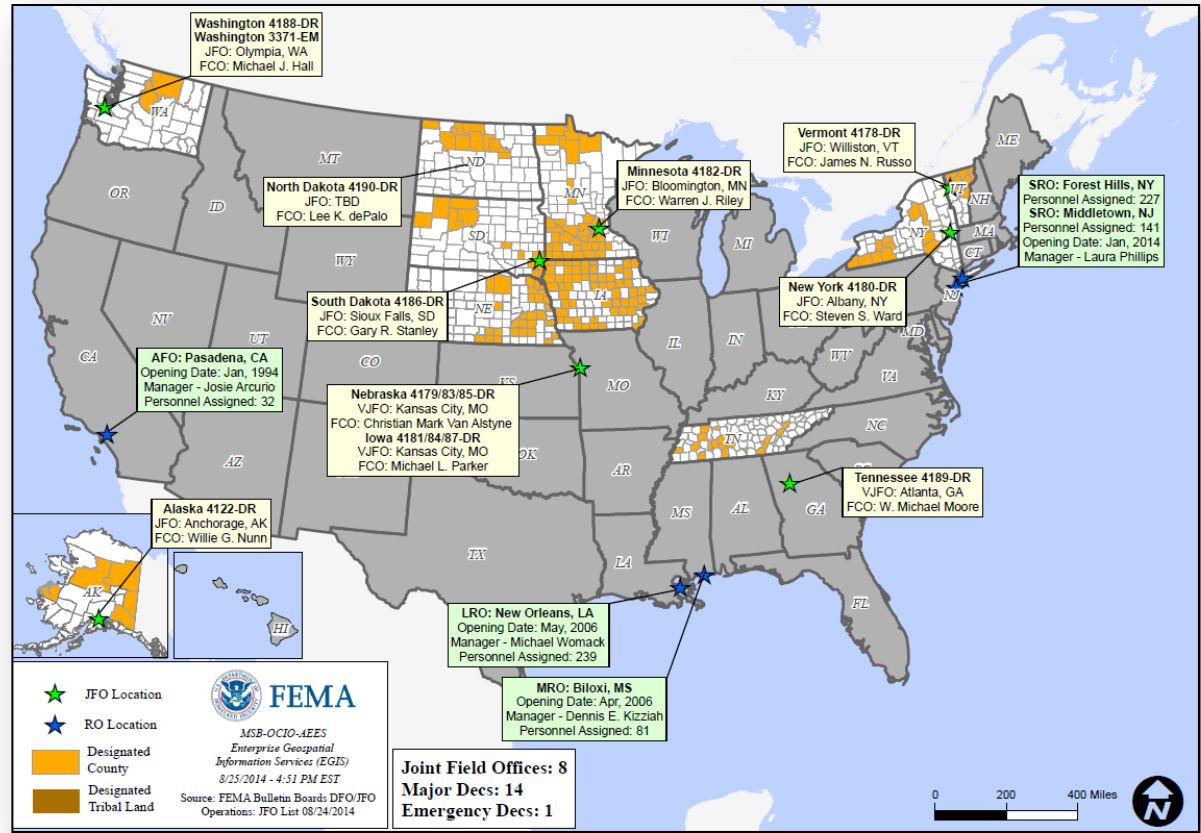


Disaster Requests & Declarations



Declaration Requests in Process		Requests APPROVED (since last report)	Requests DENIED (since last report)
1	Date Requested	0	0
HI – DR for Tropical Storm Iselle	August 21, 2014		

Open Field Offices as of August 27, 2014

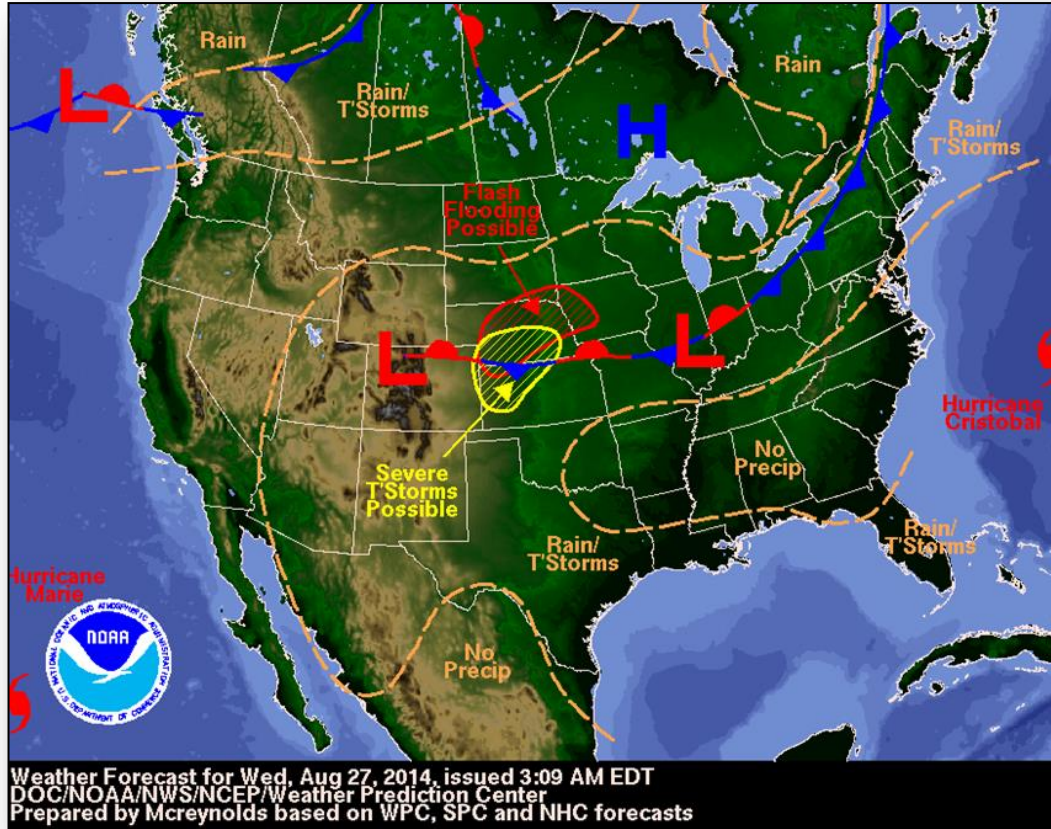


Joint Preliminary Damage Assessments

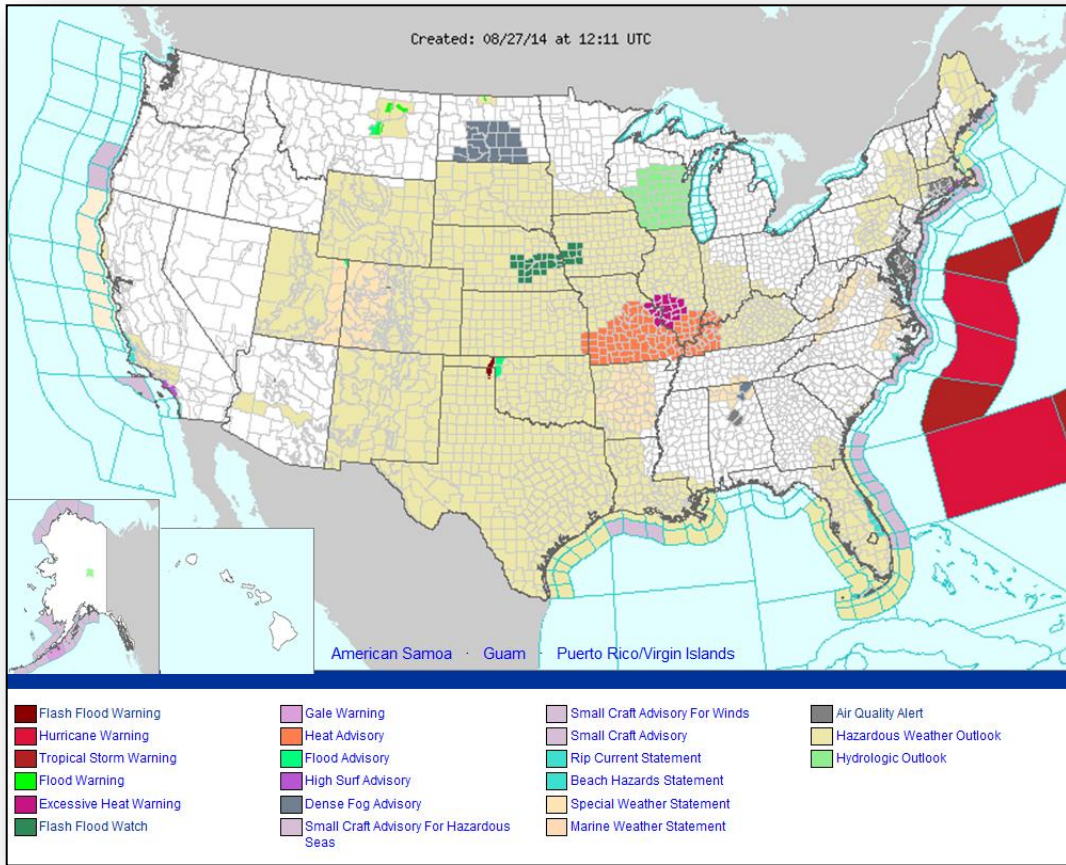


Region	State / Location	Event	IA/PA	Number of Counties		Start – End
				Requested	Complete	
II	New Jersey	Heavy Rainfall/Flooding August 12 – 13, 2014	IA	1	0	8/28 – TBD
V	Michigan	Heavy Rainfall & Flooding August 11 – 12, 2014	IA	3	0	8/26 – TBD
			PA	3	0	9/3 – TBD
IX	Hawaii	Hurricane Iselle August 7 – 9, 2014	IA	1	1	8/15 – 8/18
			PA	2	0	8/25 – 8/29
IX	California	South Napa Earthquake August 24, 2014	IA	2	0	8/27 – TBD
			PA	2	0	8/27 – TBD

National Weather Forecast



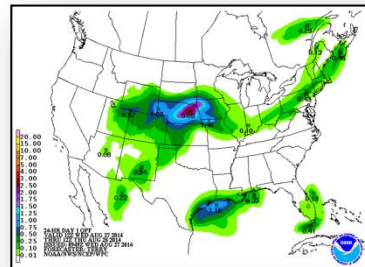
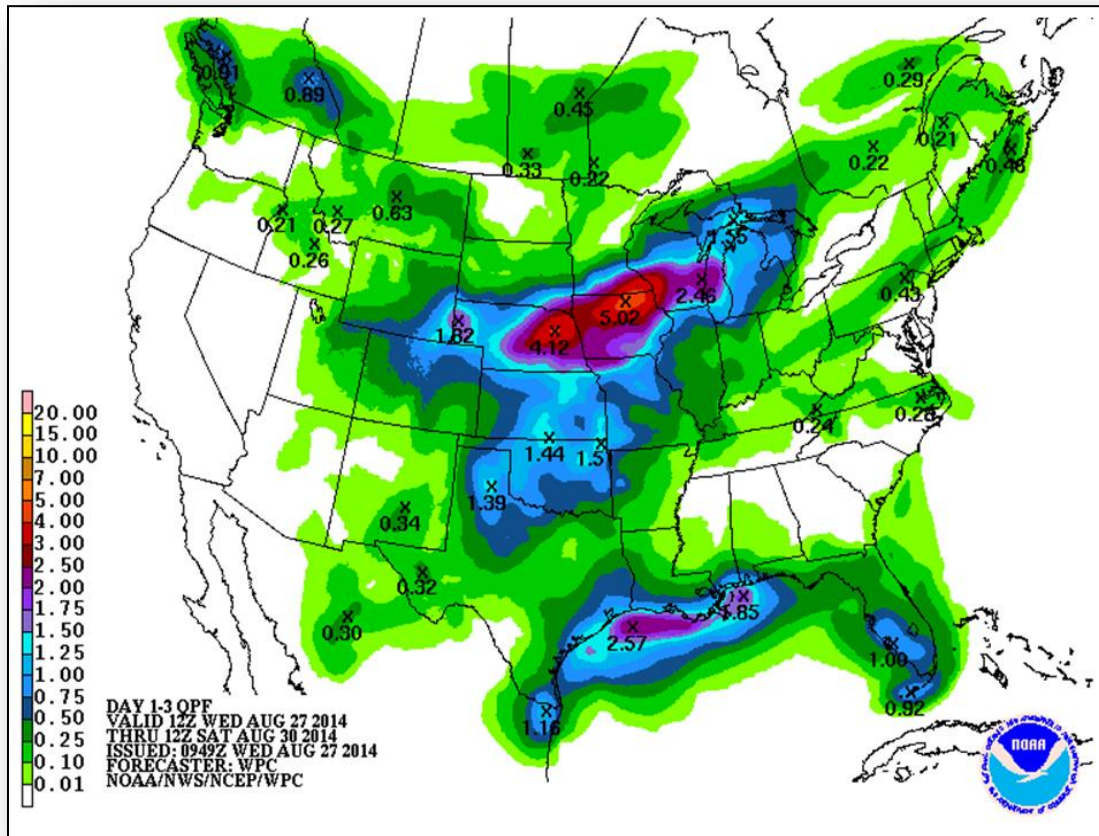
Active Watches/Warnings



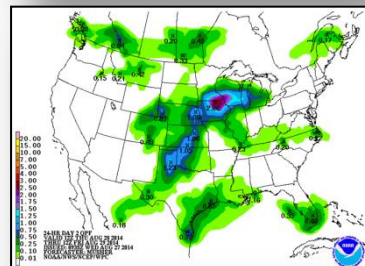
Precipitation Forecast – 3 Day



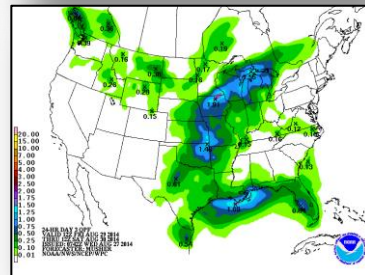
FEMA



Day 1

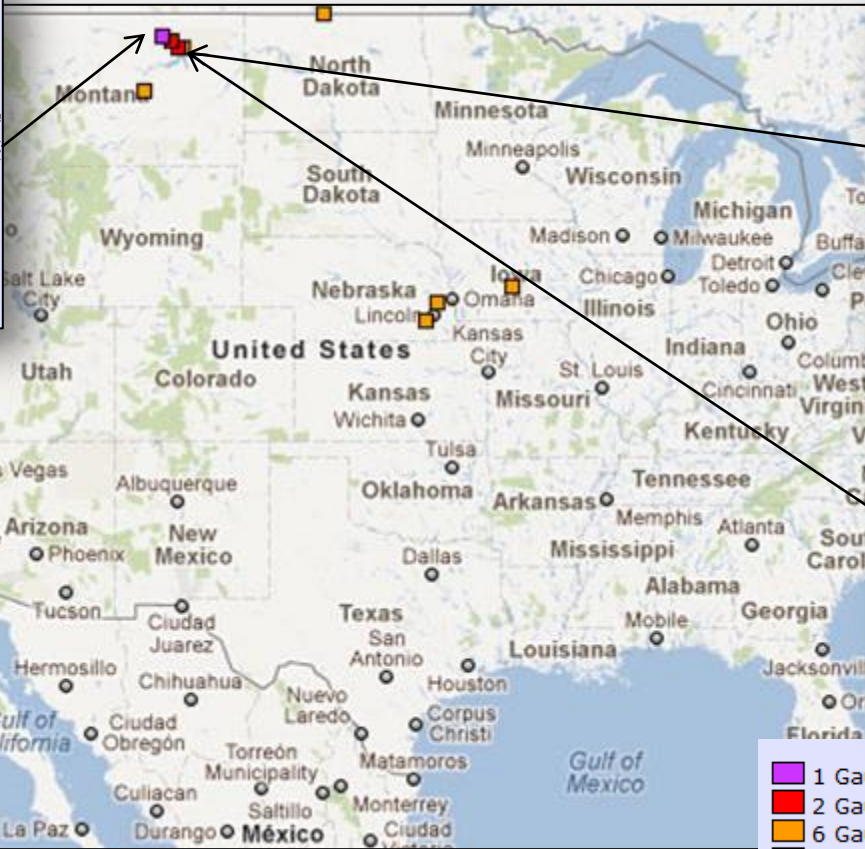
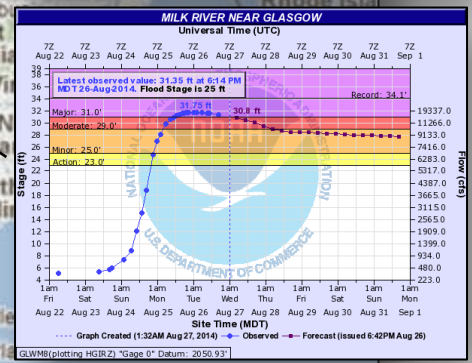
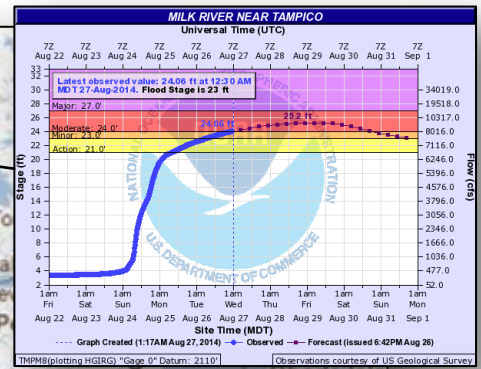
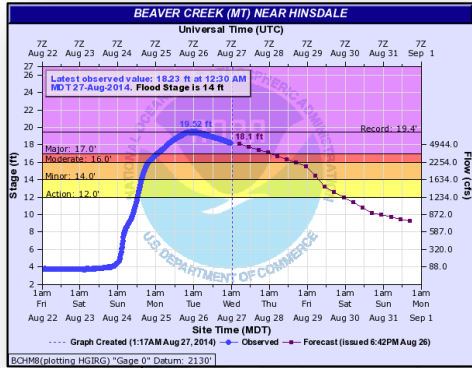


Day 2



Day 3

River Forecast



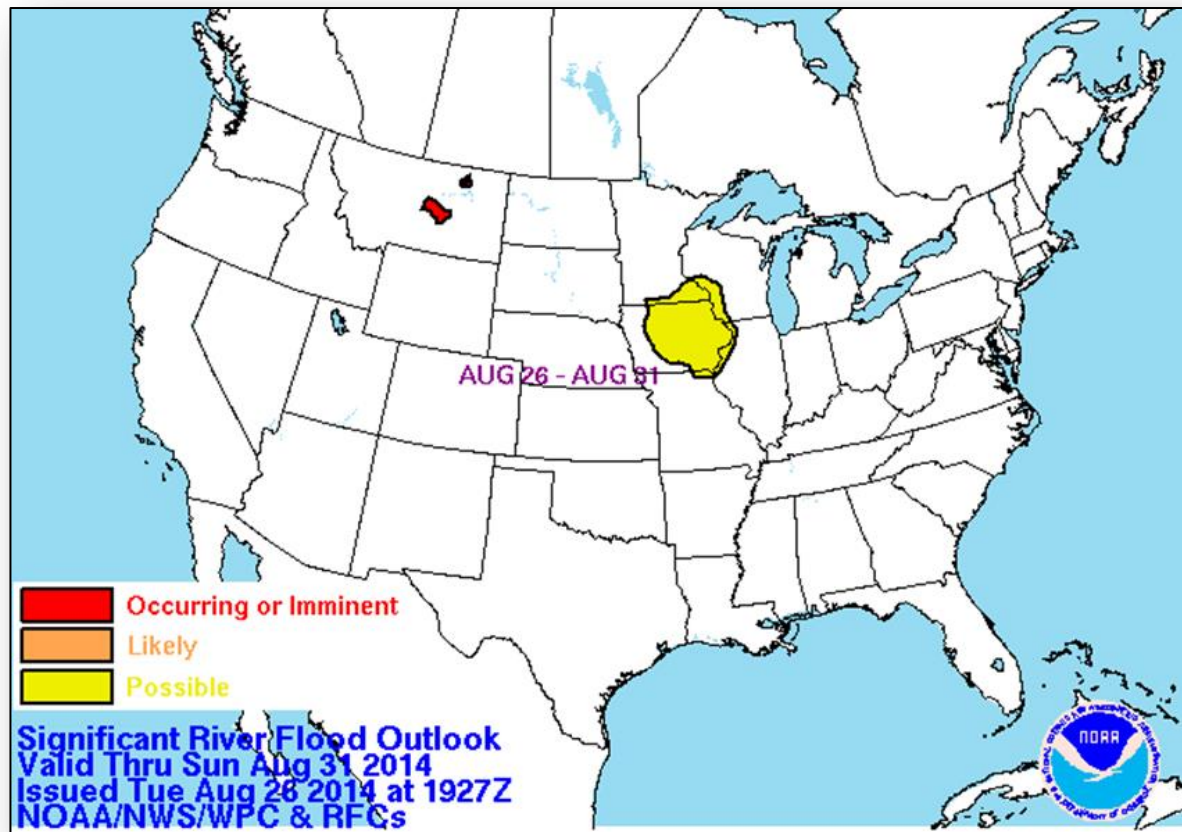
- 1 Gauge: Major Flooding
- 2 Gauges: Moderate Flooding
- 6 Gauges: Minor Flooding



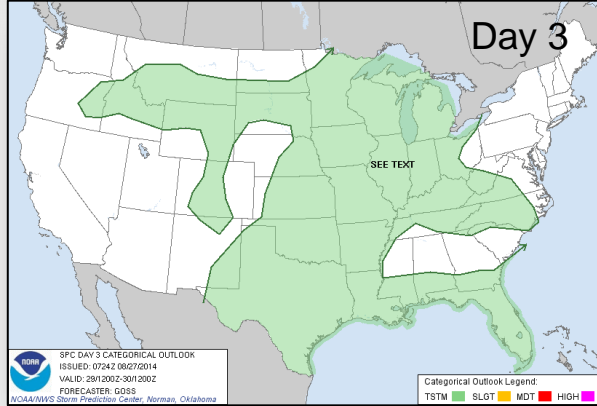
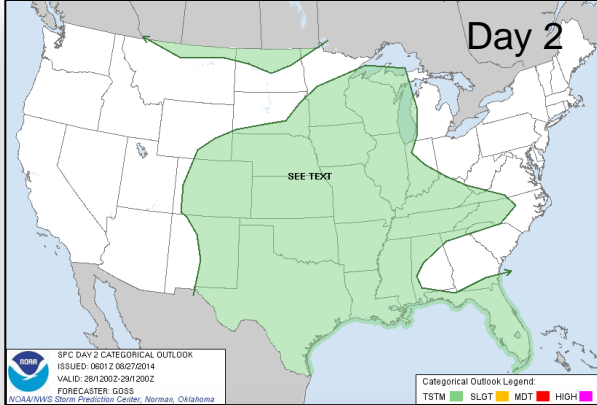
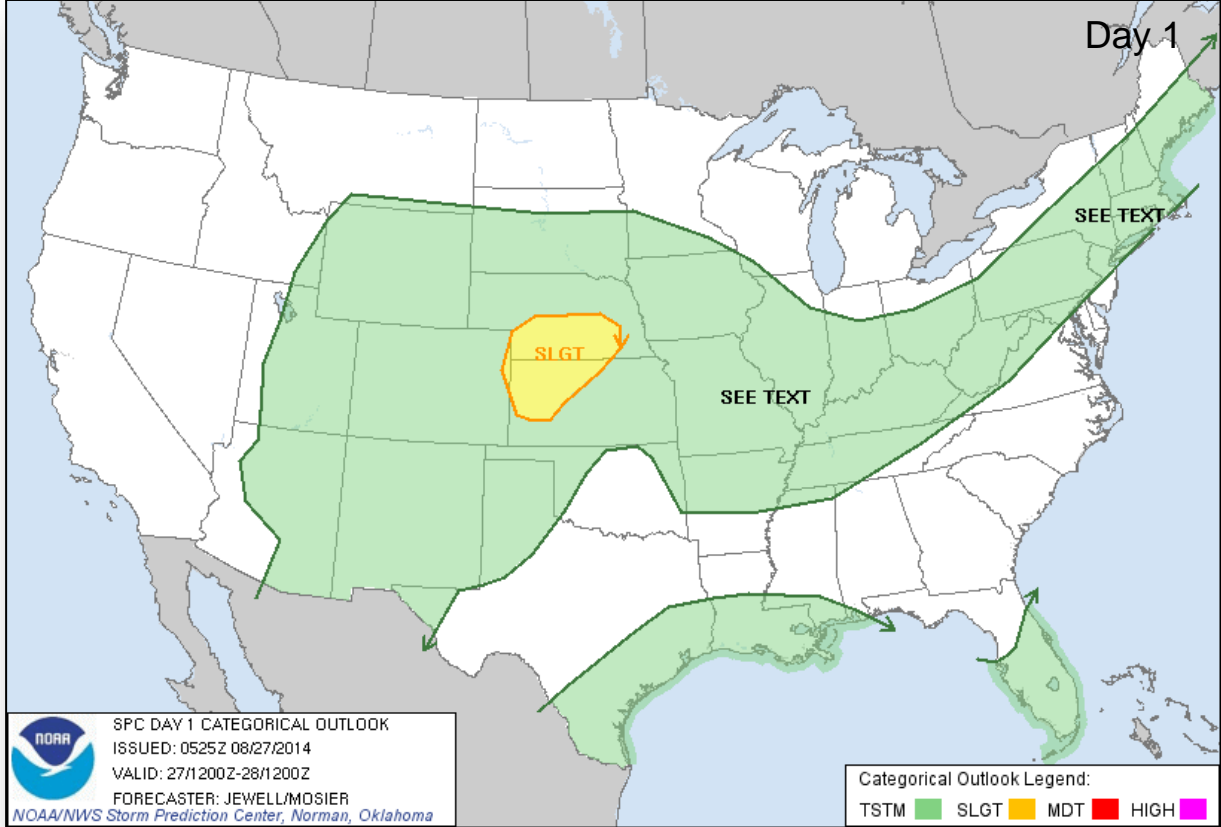
River Forecast



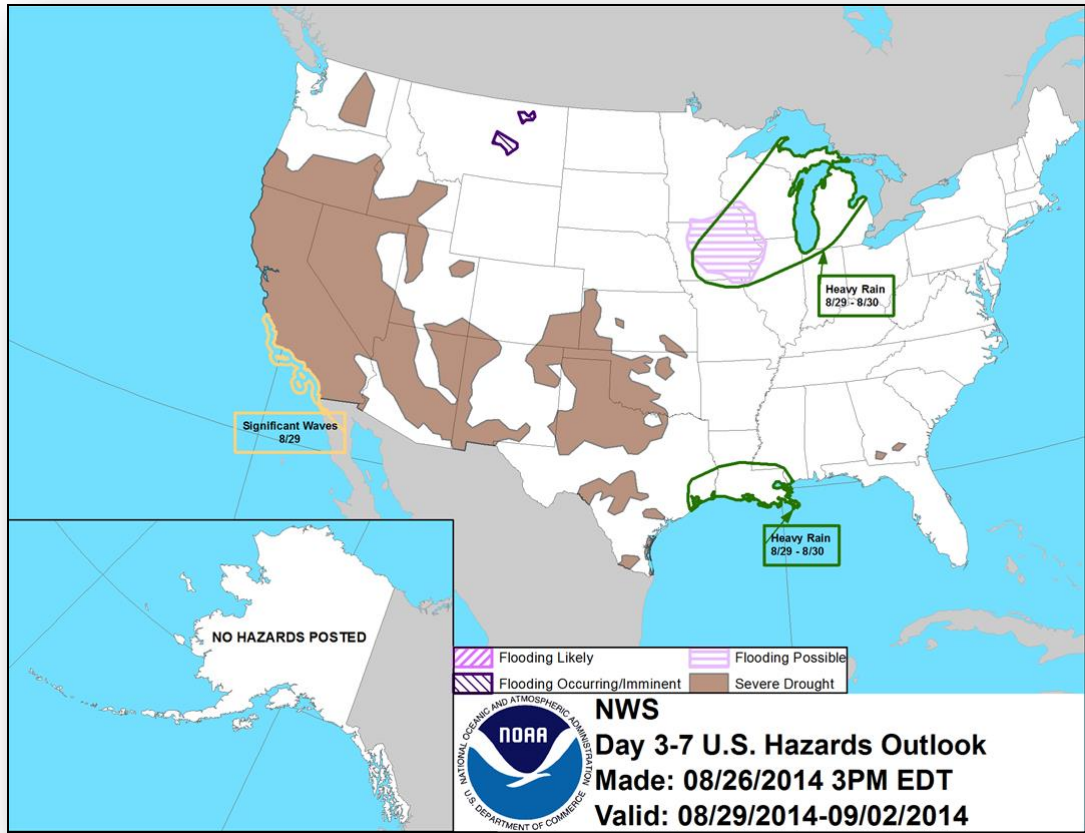
FEMA



Convective Outlook, Days 1 – 3



Hazard Outlook: August 29 – September 2



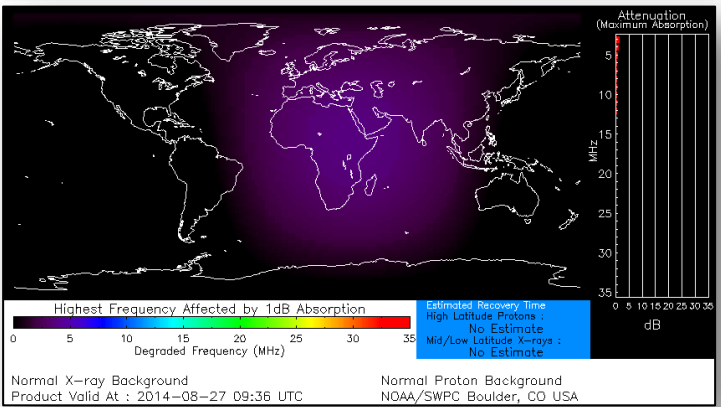
Space Weather



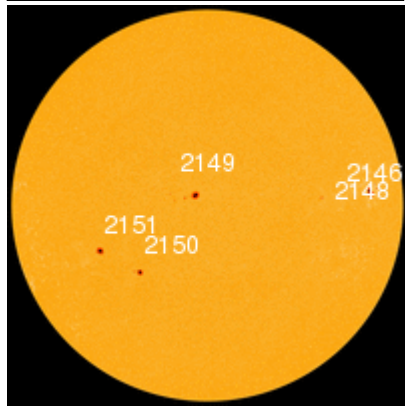
FEMA

NOAA Scales Activity (Range: 1/minor to 5/extreme)	Past 24 Hours	Current	Next 24 Hours
Space Weather Activity:	None	None	Minor
• Geomagnetic Storms	None	None	G1
• Solar Radiation Storms	None	None	None
• Radio Blackouts	None	None	None

HF Communication Impact



Sunspot Activity



FEMA Readiness – Deployable Teams/Assets



Deployable Teams/Assets									
Resource	Status	Total	Available		Partially Available	Not Available	Detailed Deployed Activated	Comments	Rating Criterion
FCO	Green	39	19	49%	0	1	19		OFDC Readiness: FCO Green Yellow Red Type 1 3+ 2 1 Type 2 4+ 3 2 Type 3 4 3 2 FDRC 3 2 1
FDRC		10	5	50%	0	0	5		
US&R		28	26	93%	1	1	0	<ul style="list-style-type: none"> NM-TF1 (Red for personnel shortages) CA-TF1 (Yellow for logistics & management) 	
National IMAT	Yellow	3	2	67%	0	0	1	National IMAT West to CA	<ul style="list-style-type: none"> Green: 3 avail Yellow: 1-2 avail Red: 0 avail (<i>Individual N-IMAT red if 50% of Section Chiefs and/or Team Leader is unavailable for deployment.</i>)
Regional IMAT		13	4	30%	3	4	2	<u>Partially Mission Capable (PMC):</u> <ul style="list-style-type: none"> Region II, III, VI <u>Not Mission Capable (NMC):</u> <ul style="list-style-type: none"> Region V, VII, IX (Team 1), VI (Team 2) <u>Deployed</u> <ul style="list-style-type: none"> Region X to WA Region VIII to ND 	<ul style="list-style-type: none"> Green: 7 or more avail Yellow: 4 - 6 teams available Red: > 8 teams deployed/unavailable <p><i>R-IMAT also red if TL Ops/Log Chief is unavailable and has no qualified replacement.</i></p>
MCOV	Green	54	46	85%	0	8	0		<ul style="list-style-type: none"> Green = 80 – 100% avail Yellow = 60 – 79% avail Red = 59% or below avail Readiness remains 95%

FEMA Readiness – National/Regional Teams



National/Regional Teams									
Resource	Status	Total	Available		Partially Available	Not Available	Deployed/ Activated	Comments	Rating Criterion
NWC		5	5	100%	0	0	24/7		<ul style="list-style-type: none"> • Green = FMC • Yellow = PMC • Red = NMC
NRCC		2	344	89%	0	44	Not Activated		
HLT		1	N/A	N/A	0	1	Activated		
DEST							Not Activated		
RRCCs		10	10	100%	0	0	None		
RWCs/MOCs		10	10	100%	0	0	24/7	Region IX RWC - Enhanced Watch	



FEMA

FEMA's mission is to support our citizens and first responders to ensure that as a nation we work together to build, sustain, and improve our capability to prepare for, protect against, respond to, recover from, and mitigate all hazards.