



FEMA

Daily Operations Briefing

Thursday, August 28, 2014

8:30 a.m. EDT

Significant Activity: August 27 – 28



Significant Events: No significant activity

Tropical Activity:

- Atlantic – Hurricane Cristobal (CAT 1); Disturbance 1 – Low (10%); Disturbance 2 – Low (near 0%)
- Eastern Pacific – Tropical Storm Marie
- Central Pacific – No tropical cyclones expected through Friday night

Significant Weather:

- Heavy rain & Flash Flooding – Central Plains to Upper Midwest
- Showers & thunderstorms – western Gulf States
- Space Weather – Past 24 hours: Minor; Next 24 hours: Moderate

Earthquakes: No significant activity

FEMA Readiness:

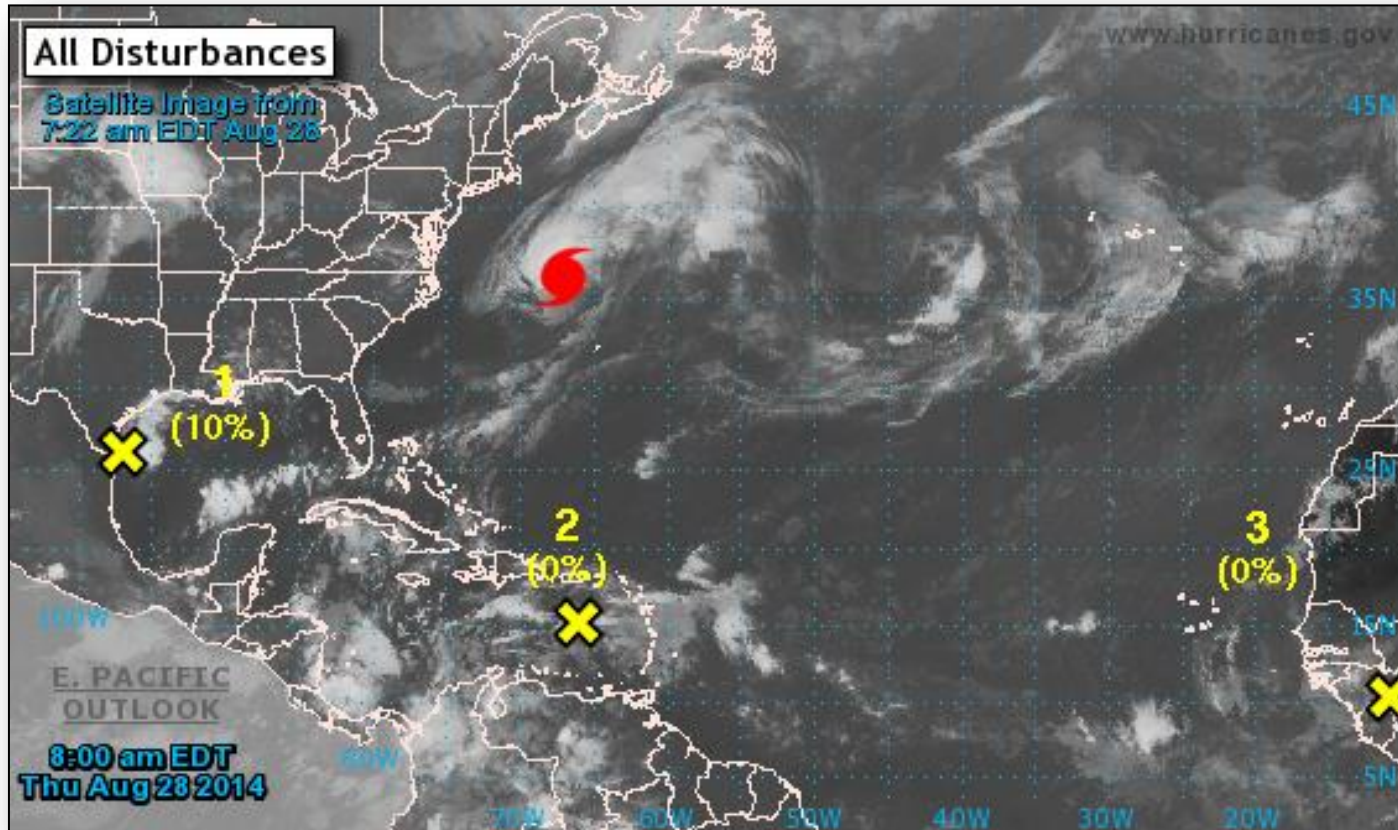
- Region IX RWC at Enhanced Watch; National IMAT West remains deployed to CA State EOC

Declaration Activity: Wisconsin – Appeal of Major Disaster Declaration Request

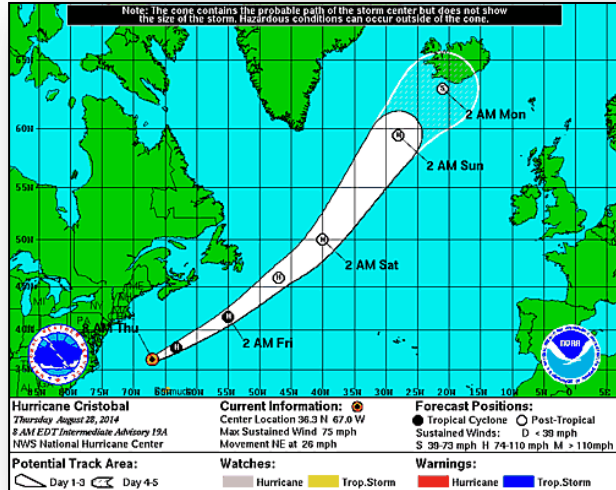
2-Day Tropical Outlook – Atlantic



FEMA



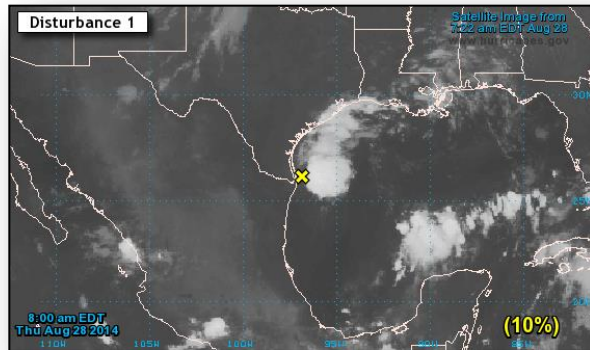
Hurricane Cristobal – Atlantic



Hurricane Cristobal (as of 8:00 a.m. EDT)

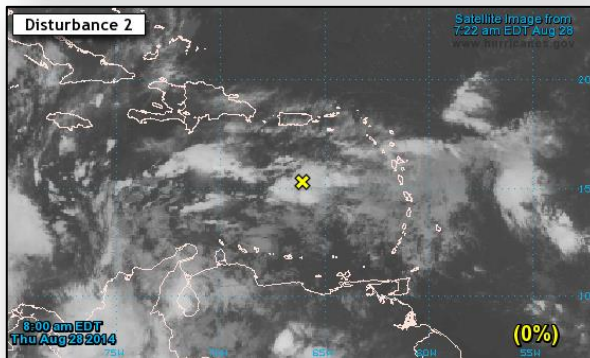
- Located 305 miles NNW of Bermuda
- Moving NE at 26 mph
- General motion with increased forward speed expected next 48 hrs
- Center will rapidly move toward North Atlantic well NW of Bermuda
- Will pass well south of Nova Scotia later today
- Maximum sustained winds 75 mph
- No significant change in strength is forecast next 48 hours
- Will become a powerful extra-tropical cyclone over the North Atlantic by Friday night
- Hurricane-force winds extend outward up to 60 miles
- Tropical storm-force winds extend 205 miles

Disturbances – Atlantic



Disturbance 1 (as of 8:00 a.m. EDT)

- Shower and thunderstorm activity over the northwestern Gulf of Mexico remains limited
- Development of the system is unlikely before it moves inland over south Texas and northern Mexico later today
- Formation chance:
 - Next 48 hours: Low (10%)
 - Next 5 days: Low (10%)



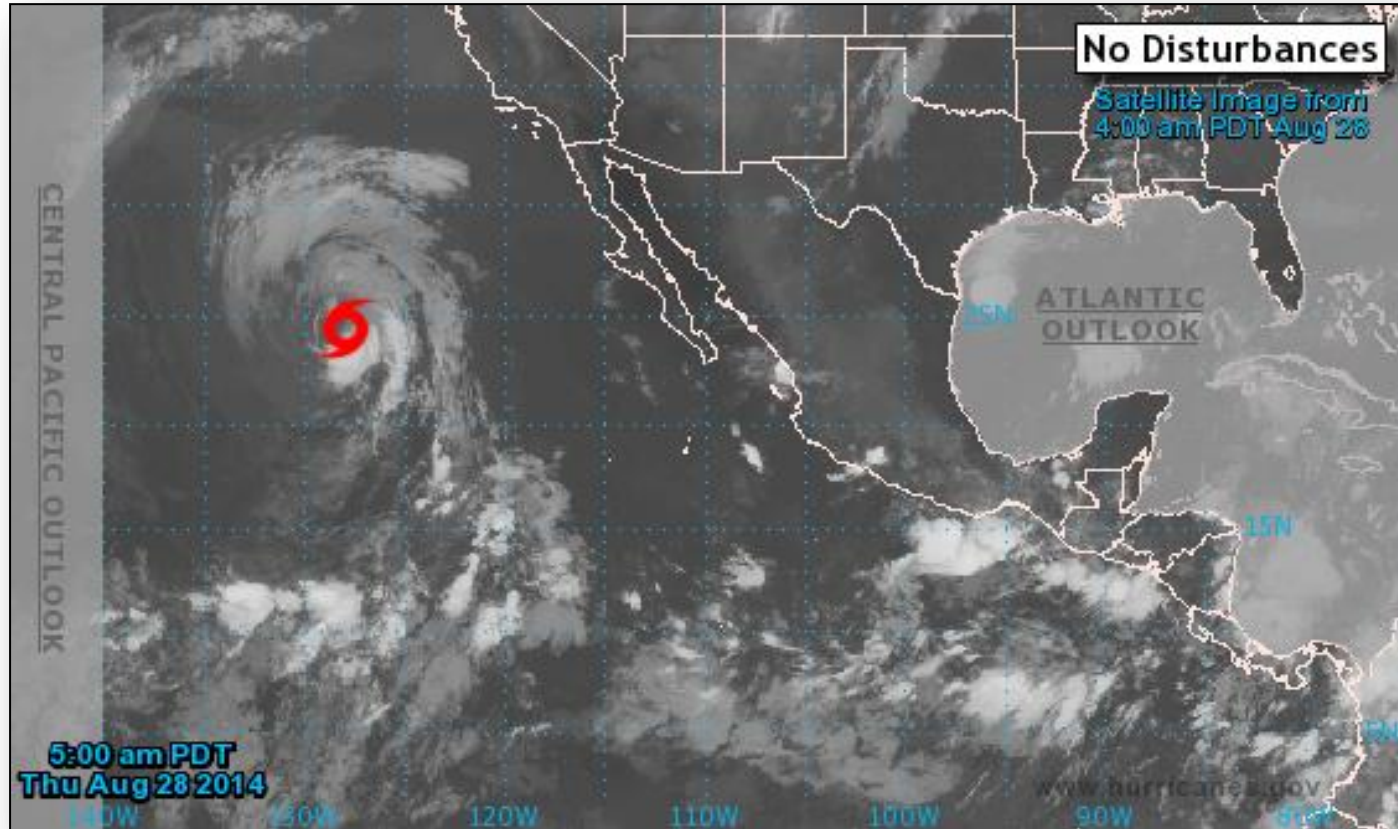
Disturbance 2 (as of 8:00 a.m. EDT)

- Disorganized cloudiness and showers
- Just west of the Lesser Antilles
- Moving generally West over the next few days
- Conditions could become favorable for development on Sunday and early next week
- Formation chance:
 - Next 48 hours: Low (near 0%)
 - Next 5 days: Low (20%)

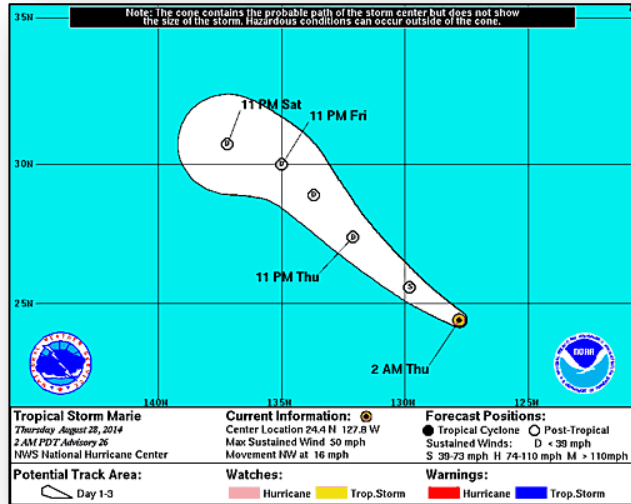
2-Day Tropical Outlook – Eastern Pacific



FEMA



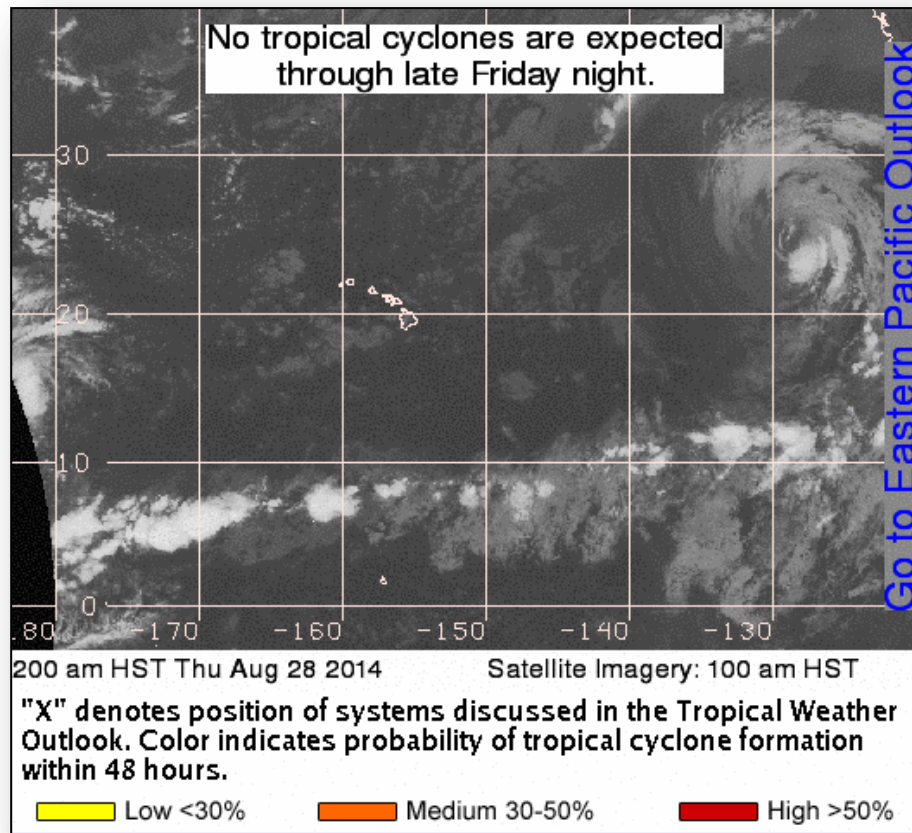
Tropical Storm Marie – Eastern Pacific



Tropical Storm Marie (as of 5:00 a.m. EDT)

- Located 820 miles WSW of Punta Eugenia, Mexico
- Moving NW at 16 mph
- Maximum sustained winds at 50 mph
- General motion is expected next few days with decrease in forward speed
- Some weakening is forecast during the next 48 hours
- Expected to become post tropical later today
- Tropical Storm Force Winds extend outward 185 miles

2-Day Tropical Outlook – Central Pacific



Disaster Requests & Declarations



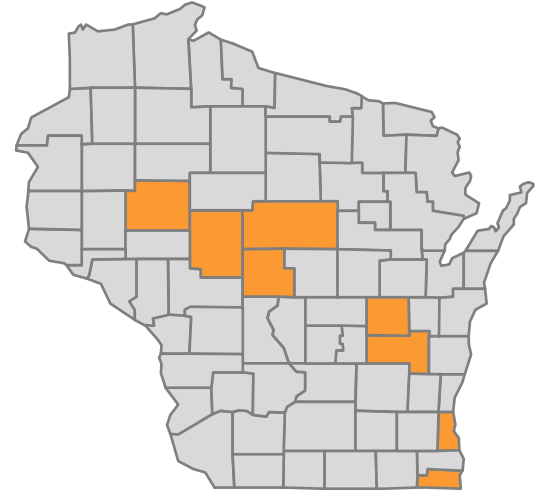
Declaration Requests in Process		Requests APPROVED (since last report)	Requests DENIED (since last report)
2	Date Requested	0	0
HI – DR for Tropical Storm Iselle	August 21, 2014		
WI – DR (Appeal) Extreme Cold and Deep Frost	August 27, 2014		

Major Disaster Declaration Request – Wisconsin



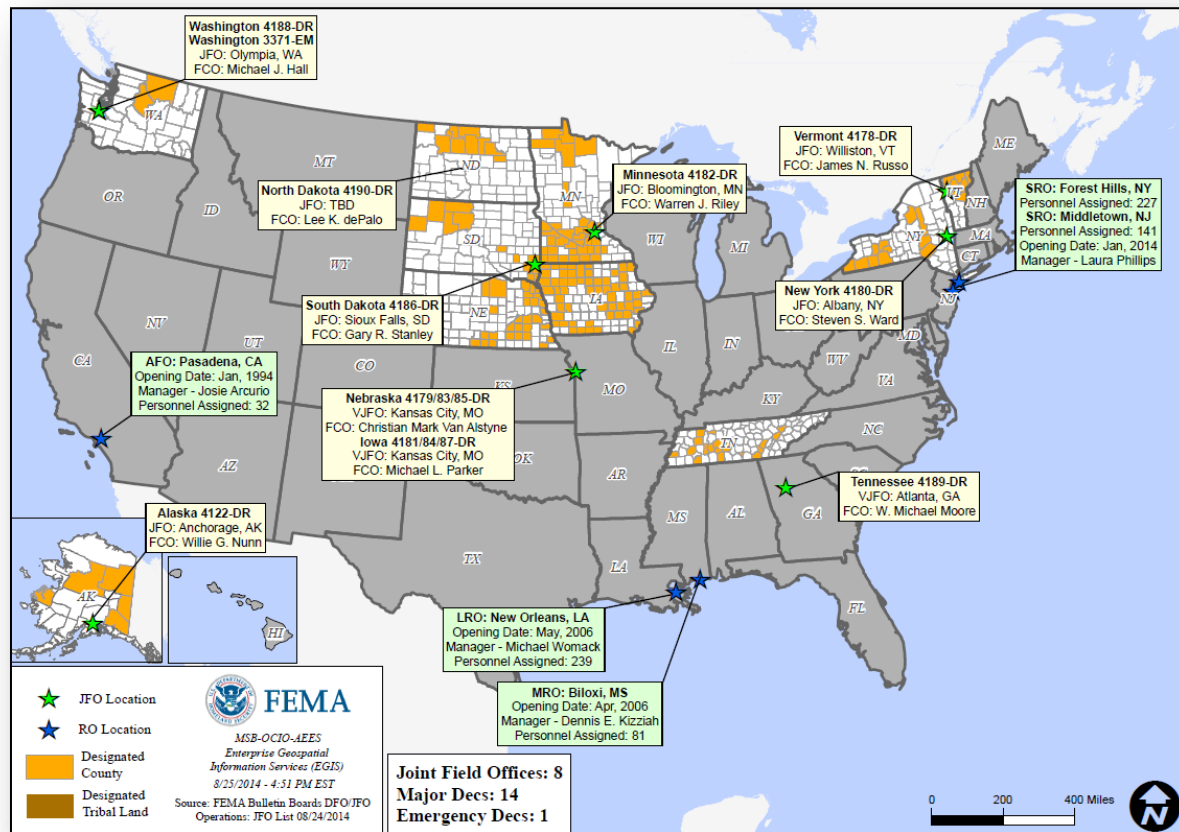
August 27, 2014

- Governor appealing denial of a Major Disaster Declaration
- For extreme cold weather and deep frost during the period of January 1 to April 7, 2014
- Requesting:
 - Public Assistance for 8 counties
 - Hazard Mitigation statewide



Requested Counties

Open Field Offices as of August 28, 2014



Joint Preliminary Damage Assessments

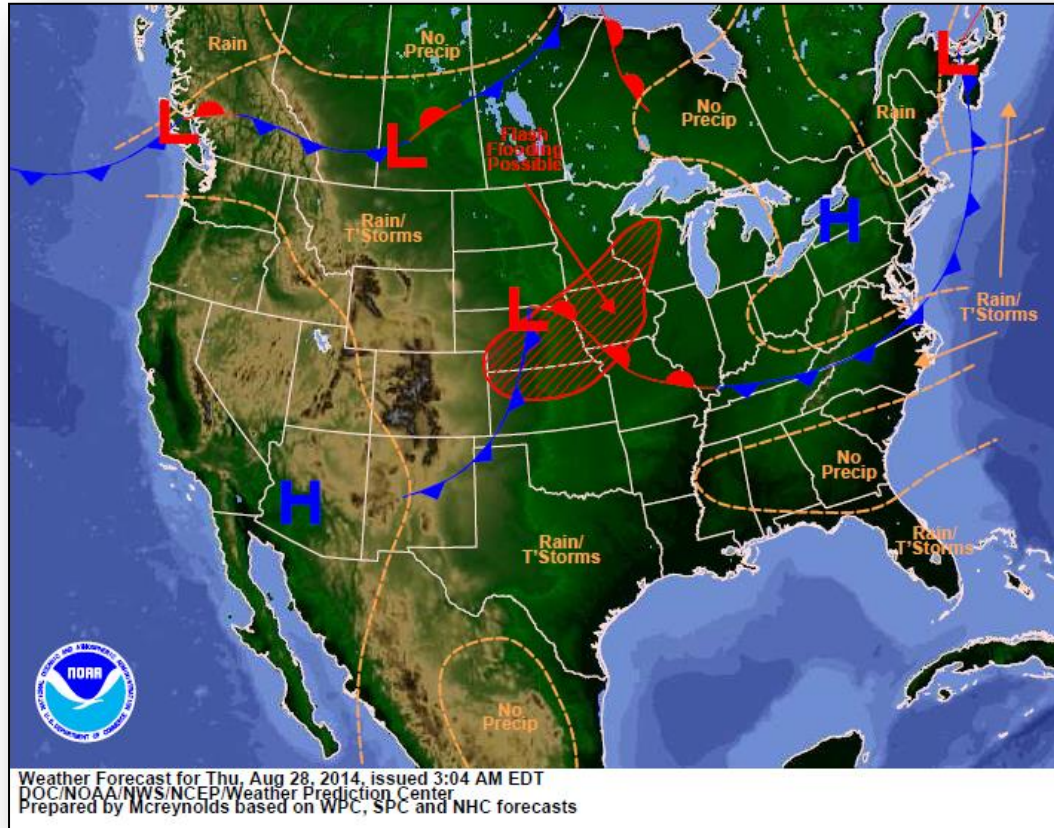


Region	State / Location	Event	IA/PA	Number of Counties		Start – End
				Requested	Complete	
II	New Jersey	Heavy Rainfall/Flooding August 12 – 13, 2014	IA	1	0	8/28 – TBD
V	Michigan	Heavy Rainfall & Flooding August 11 – 12, 2014	IA	3	0	8/26 – TBD
			PA	3	0	9/3 – TBD
IX	Hawaii	Hurricane Iselle August 7 – 9, 2014	IA	1	1	8/15 – 8/18
			PA	2	0	8/25 – 8/29
IX	California	South Napa Earthquake August 24, 2014	IA	2	0	8/27 – TBD
			PA	2	0	8/27 – TBD

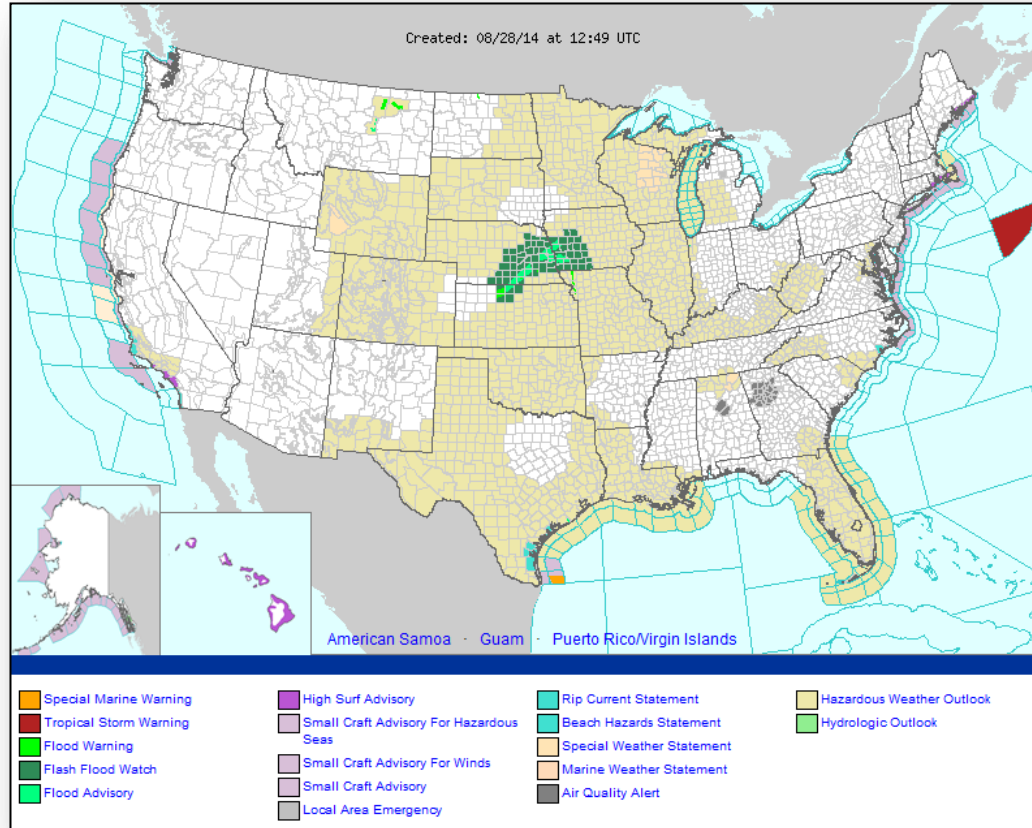
National Weather Forecast



FEMA



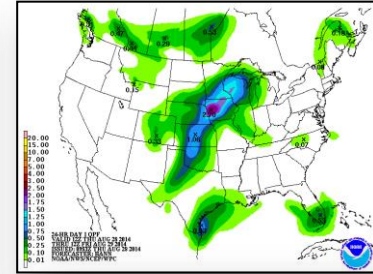
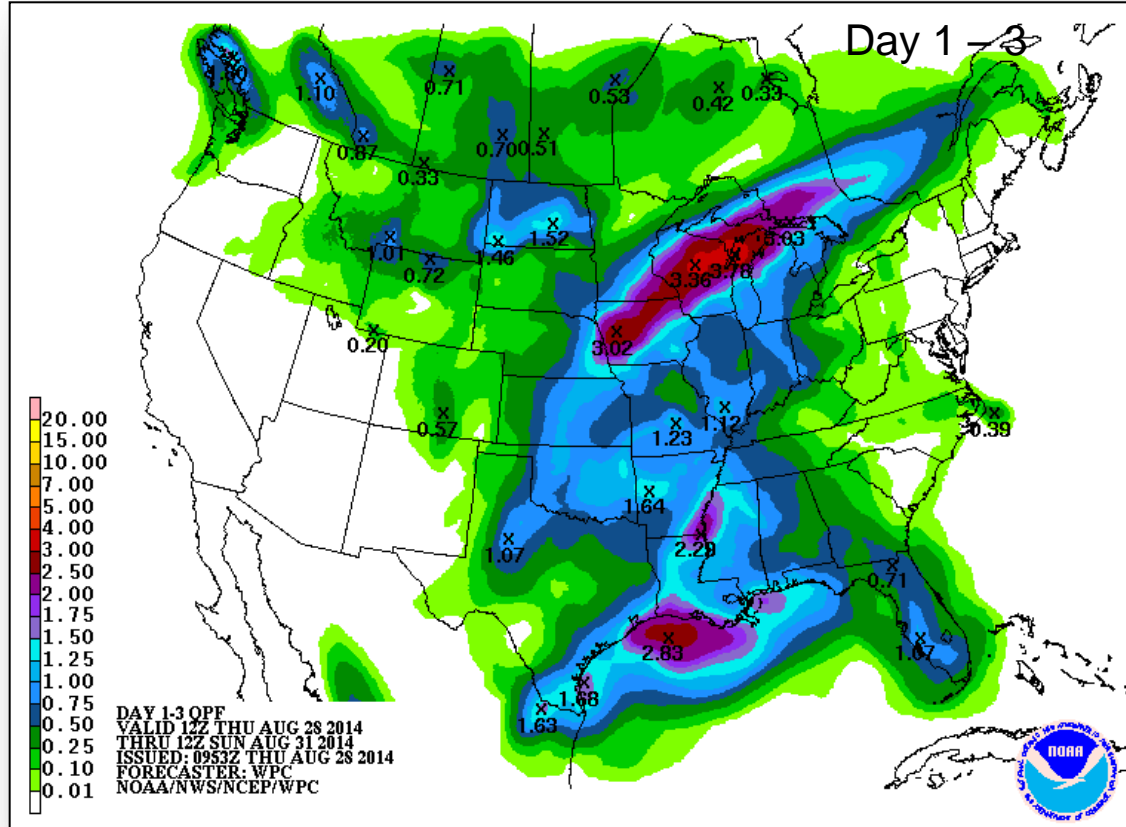
Active Watches/Warnings



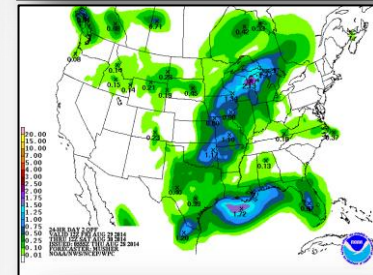
Precipitation Forecast – 3 Day



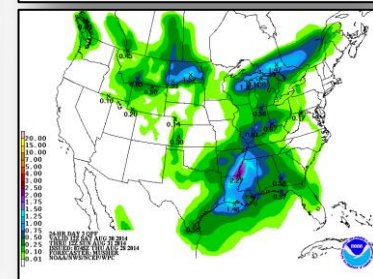
FEMA



Day 1



Day 2

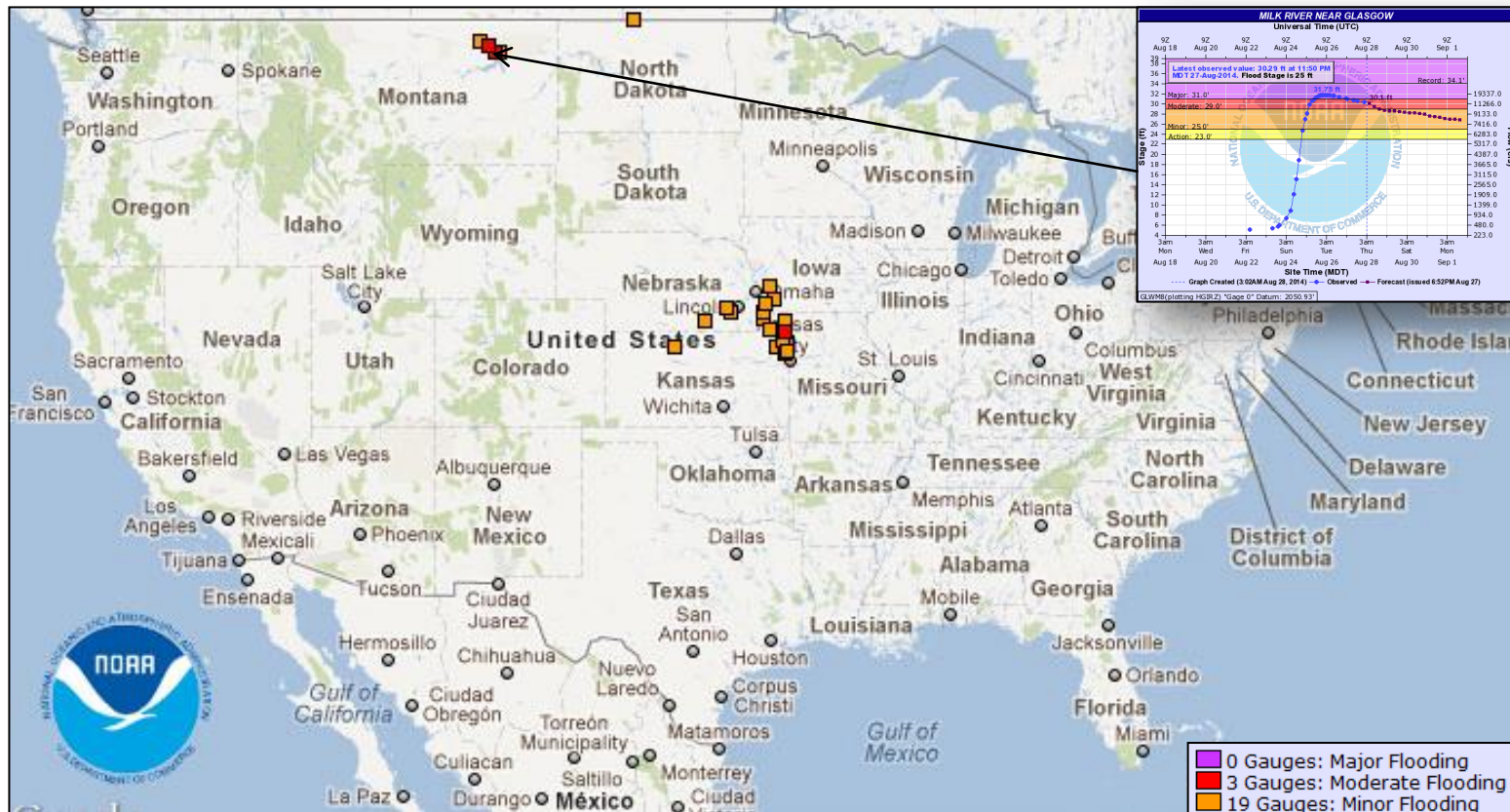


Day 3

River Forecast



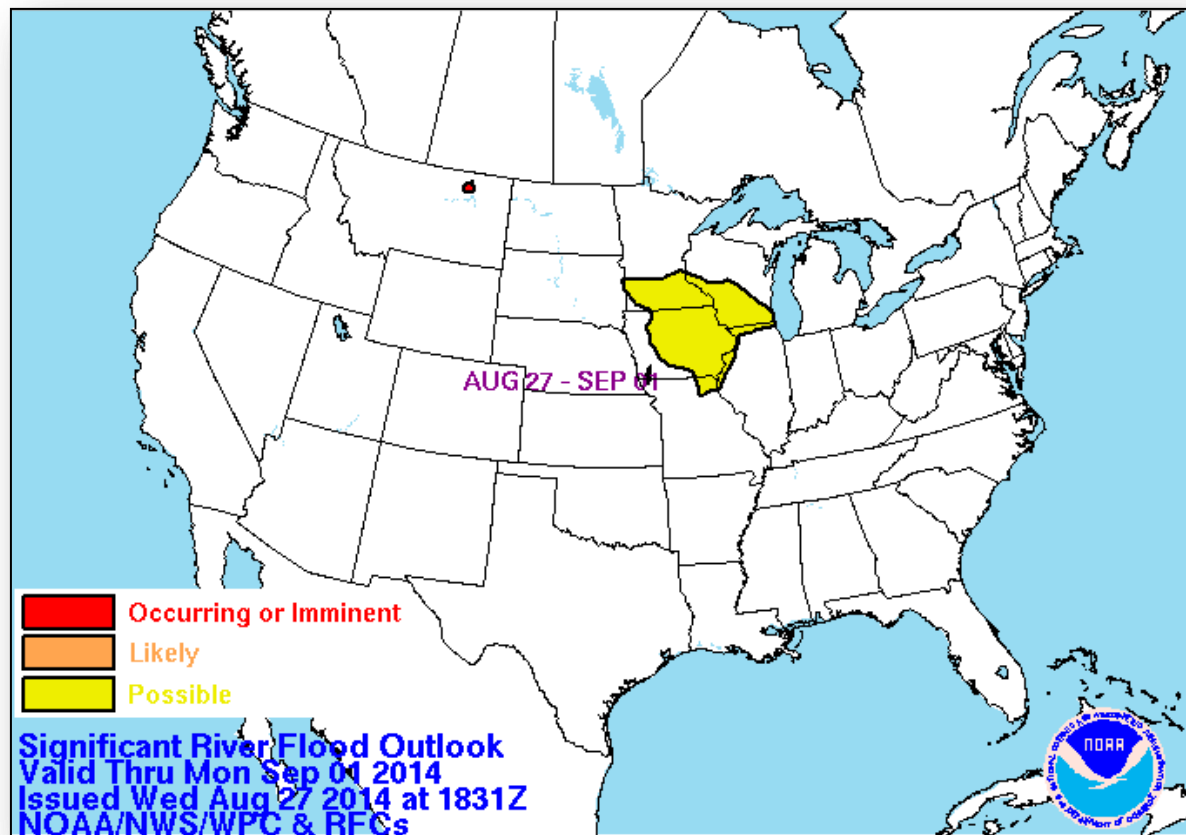
FEMA



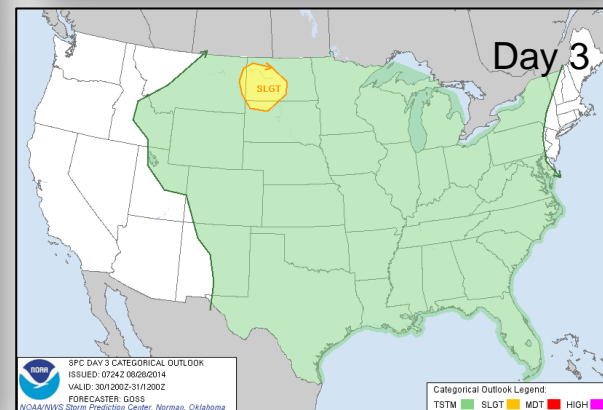
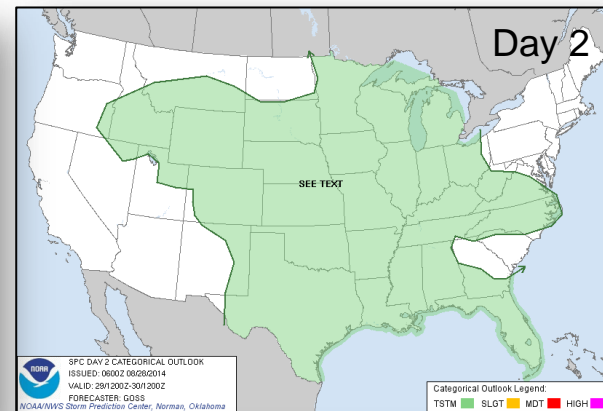
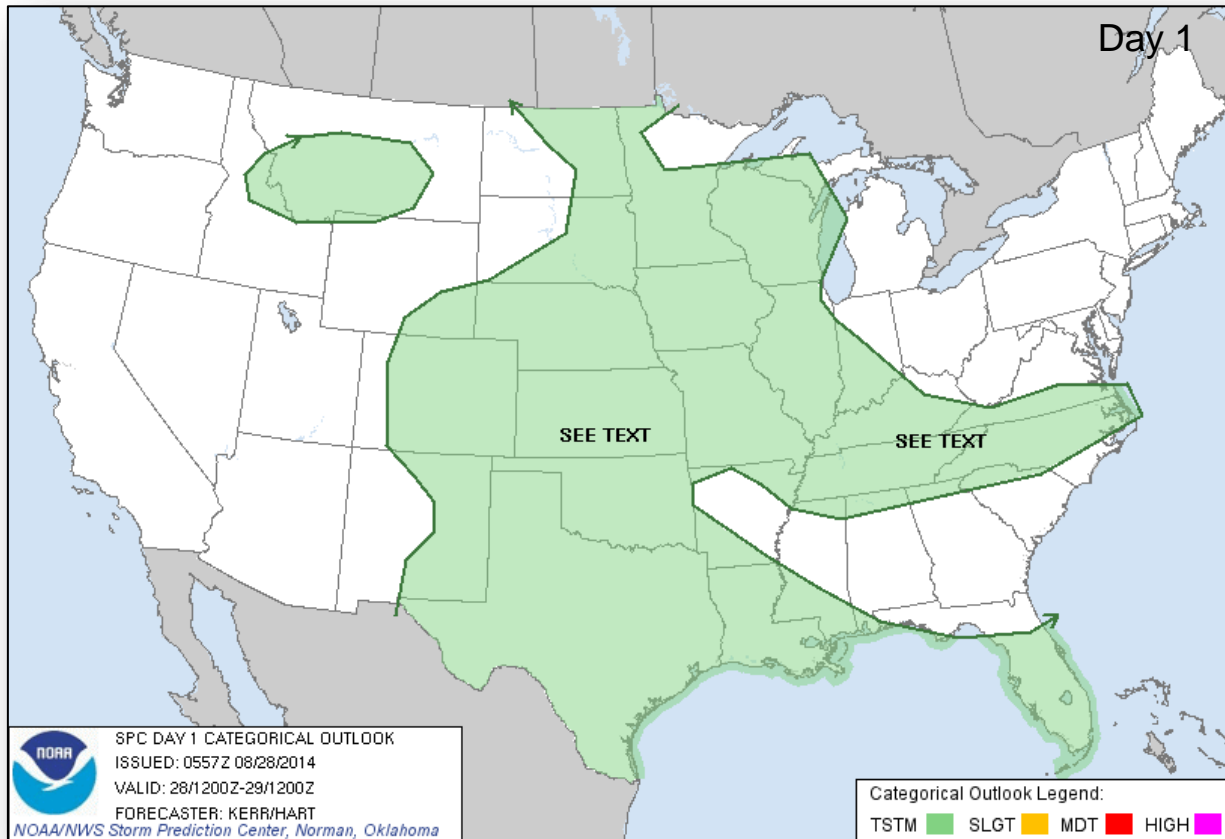
River Flood Outlook



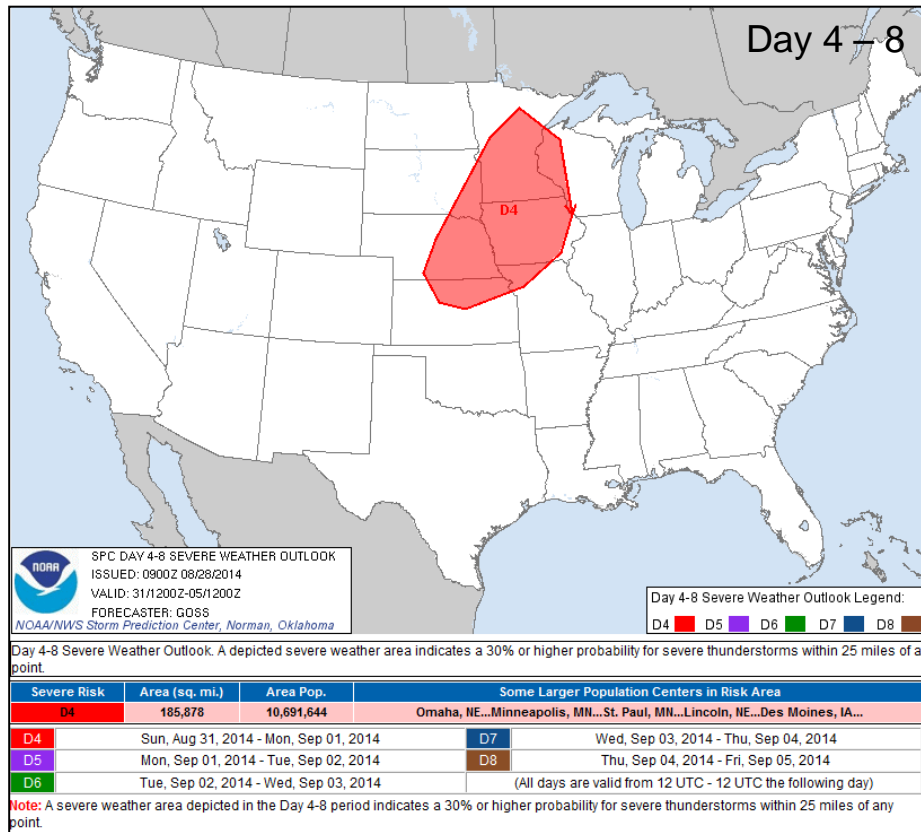
FEMA



Convective Outlook, Days 1 – 3



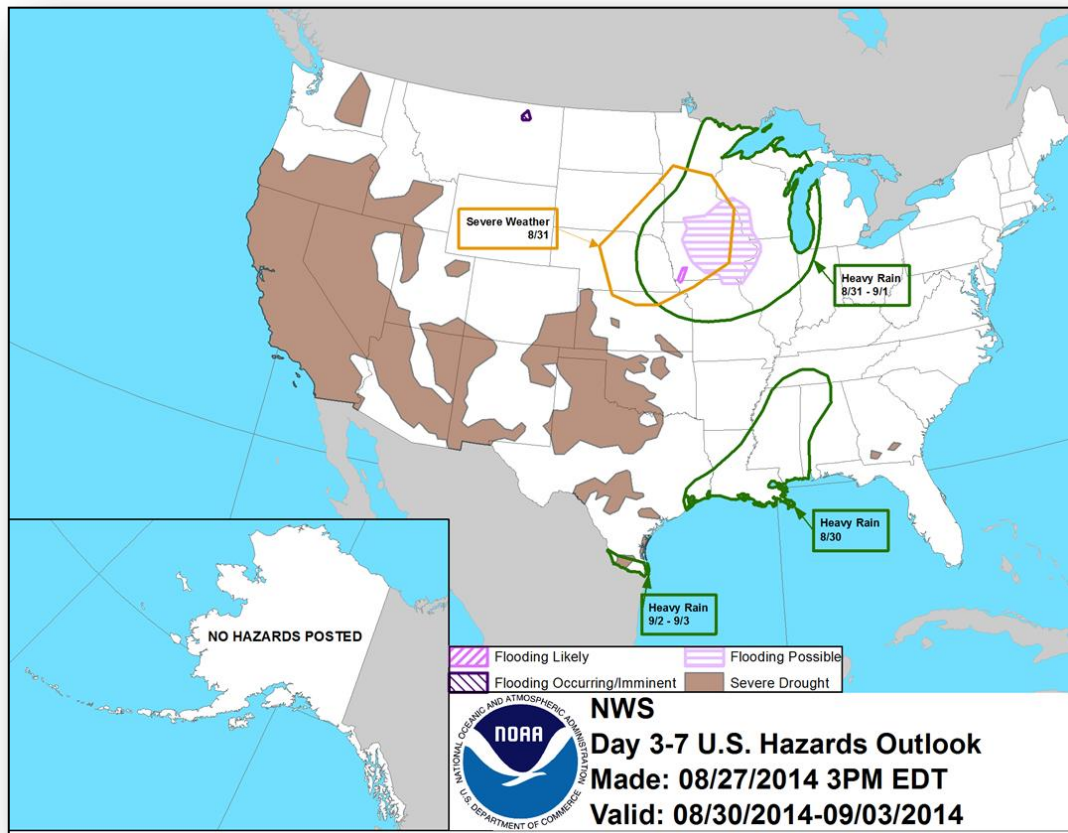
Convective Outlook, Days 4 – 8



Hazard Outlook: August 30 – September 3



FEMA

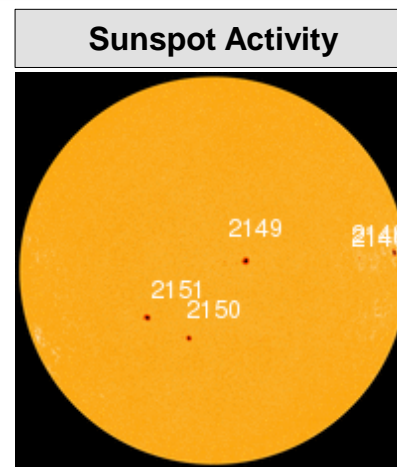
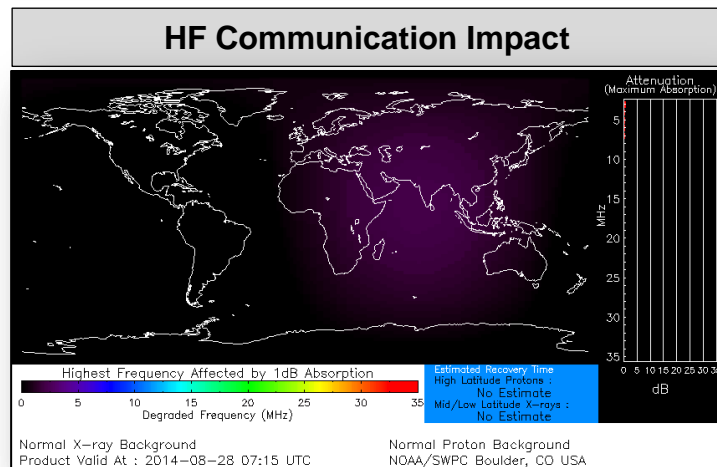


Space Weather



FEMA

NOAA Scales Activity (Range: 1/minor to 5/extreme)	Past 24 Hours	Current	Next 24 Hours
Space Weather Activity:	Minor	None	Moderate
• Geomagnetic Storms	G1	None	G2
• Solar Radiation Storms	None	None	None
• Radio Blackouts	None	None	None



FEMA Readiness – Deployable Teams/Assets



Deployable Teams/Assets									
Resource	Status	Total	Available		Partially Available	Not Available	Detailed Deployed Activated	Comments	Rating Criterion
FCO		39	19	49%	0	1	19		OFDC Readiness: FCO Green Yellow Red Type 1 3+ 2 1 Type 2 4+ 3 2 Type 3 4 3 2
FDRC		10	5	50%	0	0	5		FDRC 3 2 1
US&R		28	26	93%	1	1	0	<ul style="list-style-type: none">NM-TF1 (Red for personnel shortages)CA-TF1 (Yellow for logistics & management)	<ul style="list-style-type: none">Green = Available/FMCYellow = Available/PMCRed = Out-of-ServiceBlue = Assigned/Deployed
National IMAT		3	2	67%	0	0	1	National IMAT West to CA	<ul style="list-style-type: none">Green: 3 availYellow: 1-2 availRed: 0 avail (<i>Individual N-IMAT red if 50% of Section Chiefs and/or Team Leader is unavailable for deployment.</i>)
Regional IMAT		12	4	33%	3	3	2	<u>Partially Mission Capable (PMC):</u> <ul style="list-style-type: none">Region II, III, VI (<i>teams merged</i>) <u>Not Mission Capable (NMC):</u> <ul style="list-style-type: none">Region V, VII, IX (Team 1), VI (Team 2) <u>Deployed</u> <ul style="list-style-type: none">Region X to WARegion VIII to ND	<ul style="list-style-type: none">Green: 7 or more availYellow: 4 - 6 teams availableRed: > 8 teams deployed/unavailable <i>R-IMAT also red if TL Ops/Log Chief is unavailable and has no qualified replacement.</i>
MCOV		54	47	87%	0	7	0		<ul style="list-style-type: none">Green = 80 – 100% availYellow = 60 – 79% availRed = 59% or below availReadiness remains 95%

FEMA Readiness – National/Regional Teams



National/Regional Teams									
Resource	Status	Total	Available		Partially Available	Not Available	Deployed/ Activated	Comments	Rating Criterion
NWC		5	5	100%	0	0	24/7		• Green = FMC • Yellow = PMC • Red = NMC
NRCC		2	344	89%	0	44	Not Activated		
HLT		1	N/A	N/A	0	1	Activated		
DEST							Not Activated		
RRCCs		10	10	100%	0	0	None		
RWCs/MOCs		10	10	100%	0	0	24/7	Region IX RWC – Enhanced Watch	



FEMA

FEMA's mission is to support our citizens and first responders to ensure that as a nation we work together to build, sustain, and improve our capability to prepare for, protect against, respond to, recover from, and mitigate all hazards.