



FEMA

Daily Operations Briefing

Sunday, August 31, 2014

8:30 a.m. EDT

Significant Activity: August 30 – 31



Significant Events: No significant activity

Tropical Activity:

- Atlantic – Disturbance 1 (Medium - 30%)
- Eastern Pacific – Tropical cyclone activity not expected next 48 hours
- Central Pacific – No tropical cyclones expected late Monday night

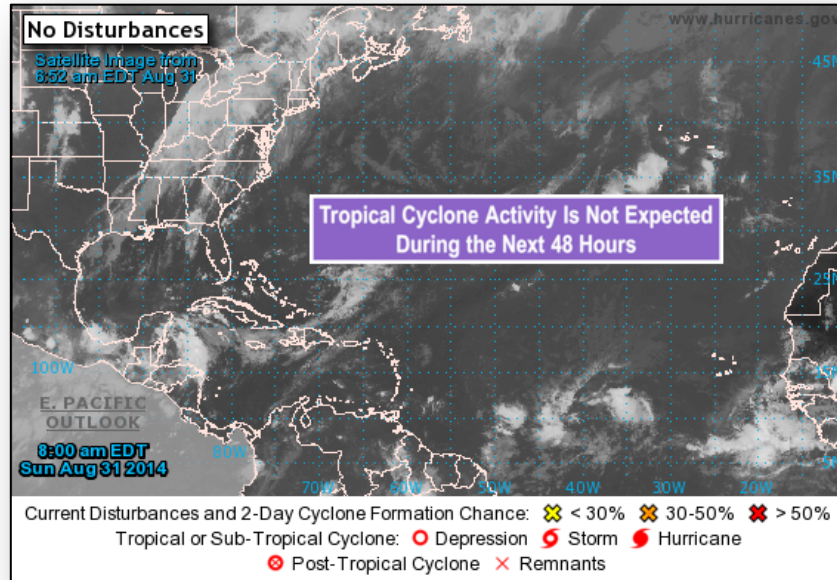
Significant Weather:

- Slight risk of severe thunderstorms – Central Plains to Upper Mississippi Valley; Mid-Atlantic to Northeast
- Flash flooding possible – Central Plains to Middle/Upper Mississippi Valley
- Space Weather: Past 24 hours: none; next 24 hours: none predicted
- Elevated Fire Weather/Red Flag Warnings: None

FEMA Readiness:

- Region IX RWC returned to Watch/Steady State

2-Day Tropical Outlook – Atlantic



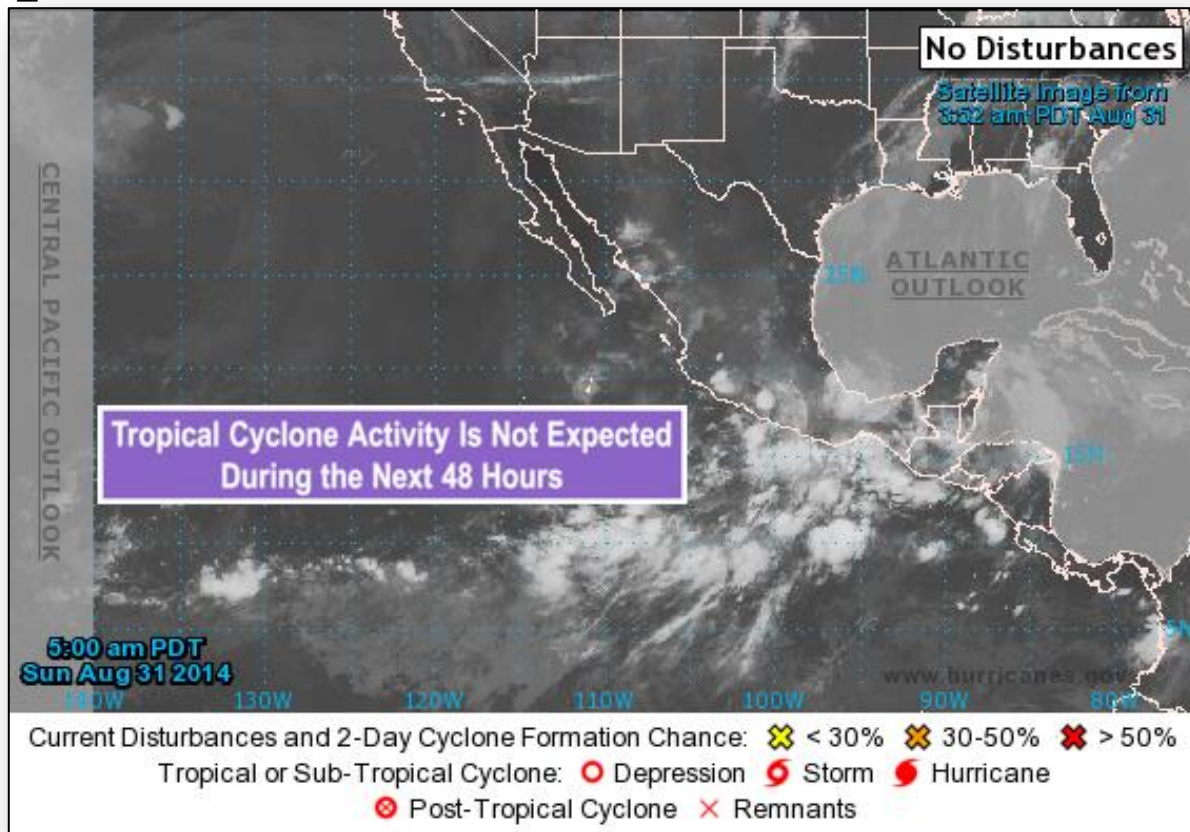
Disturbance 1 (as of 8:00 a.m. EDT)

- Located over northwestern Caribbean Sea
- Land interaction will limit significant development
- Conditions expected to be conducive for development by Monday once system moves into southwestern Gulf of Mexico
- Formation chance:
 - Next 48 hours: Medium (30%)
 - Next 5 days: Medium (50%)

2-Day Tropical Outlook – Eastern Pacific



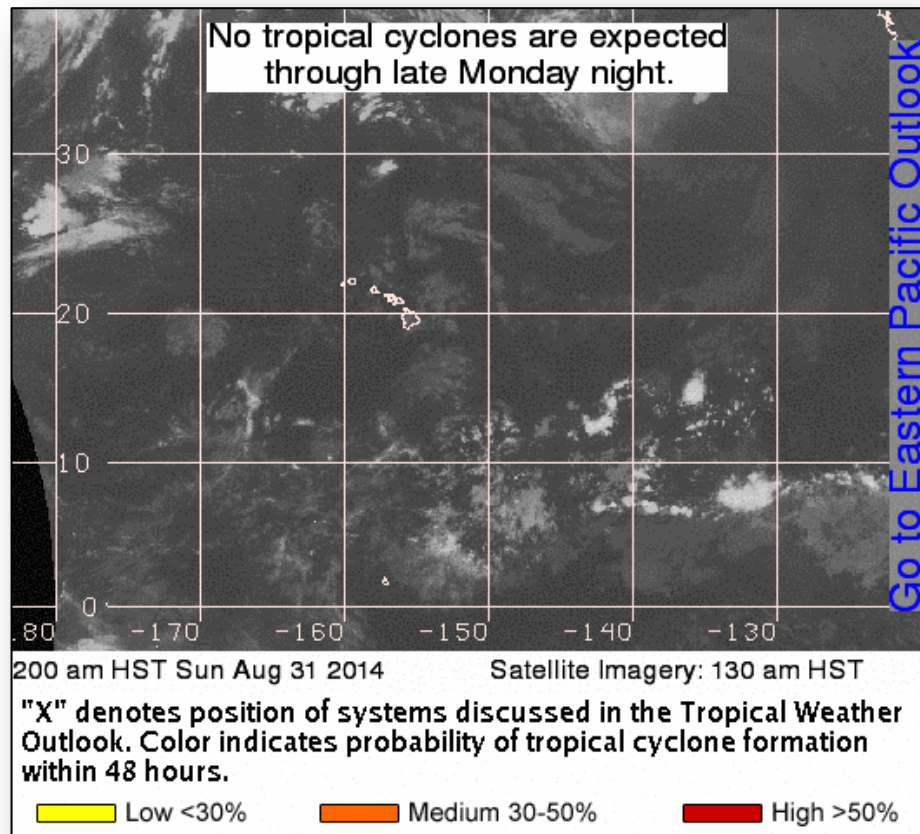
FEMA



2-Day Tropical Outlook – Central Pacific



FEMA



Wildfire Summary



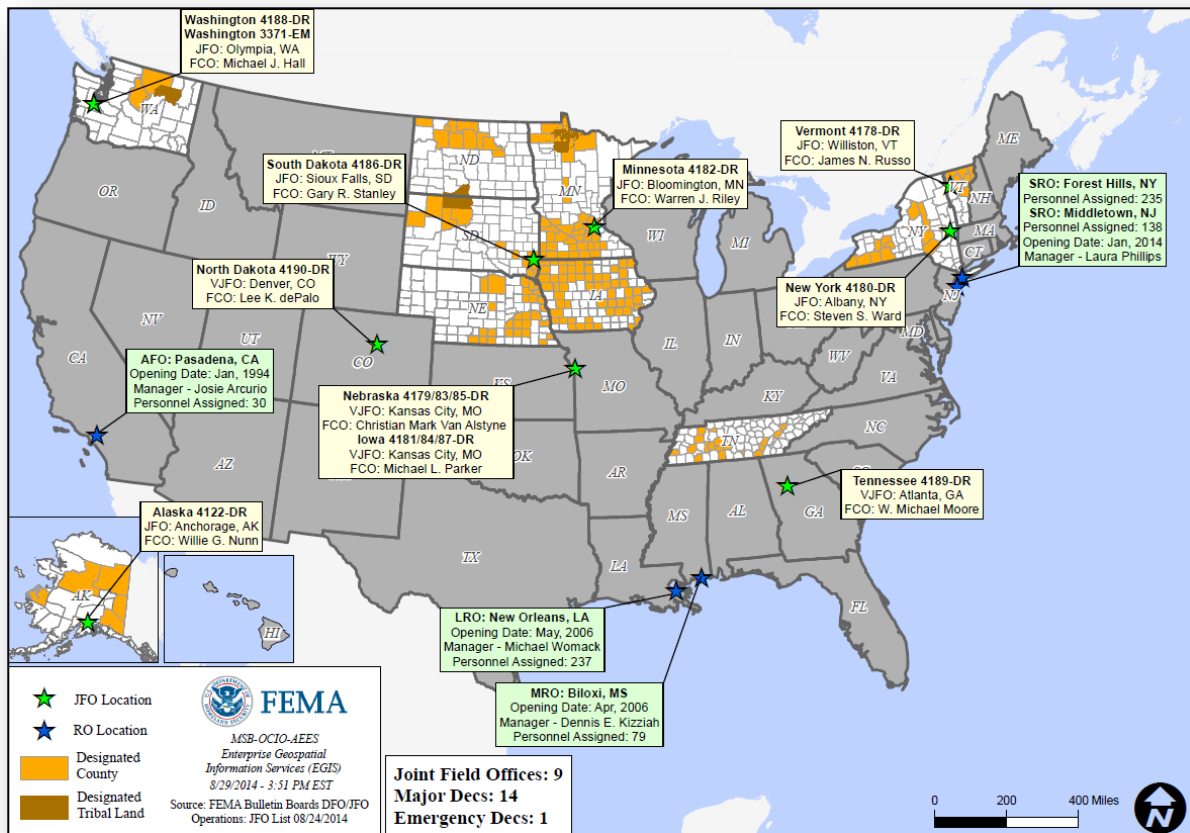
Fire Name (County)	FMAG #	Acres Burned	% Contained <small>Est. Containment date</small>	Evacuations (Residents)	Structures Threatened	Structures Destroyed	Fatalities / Injuries
California (1)							
Happy Camp Complex (Siskiyou County)	Not requested	57,872 (+13,323)	15%	Mandatory	743 (695 homes)	0	0 / 8

Disaster Requests & Declarations



Declaration Requests in Process		Requests APPROVED (since last report)	Requests DENIED (since last report)
1	Date Requested	0	0
WI – DR (Appeal) Extreme Cold and Deep Frost	August 27, 2014		

Open Field Offices as of August 31, 2014



Joint Preliminary Damage Assessments

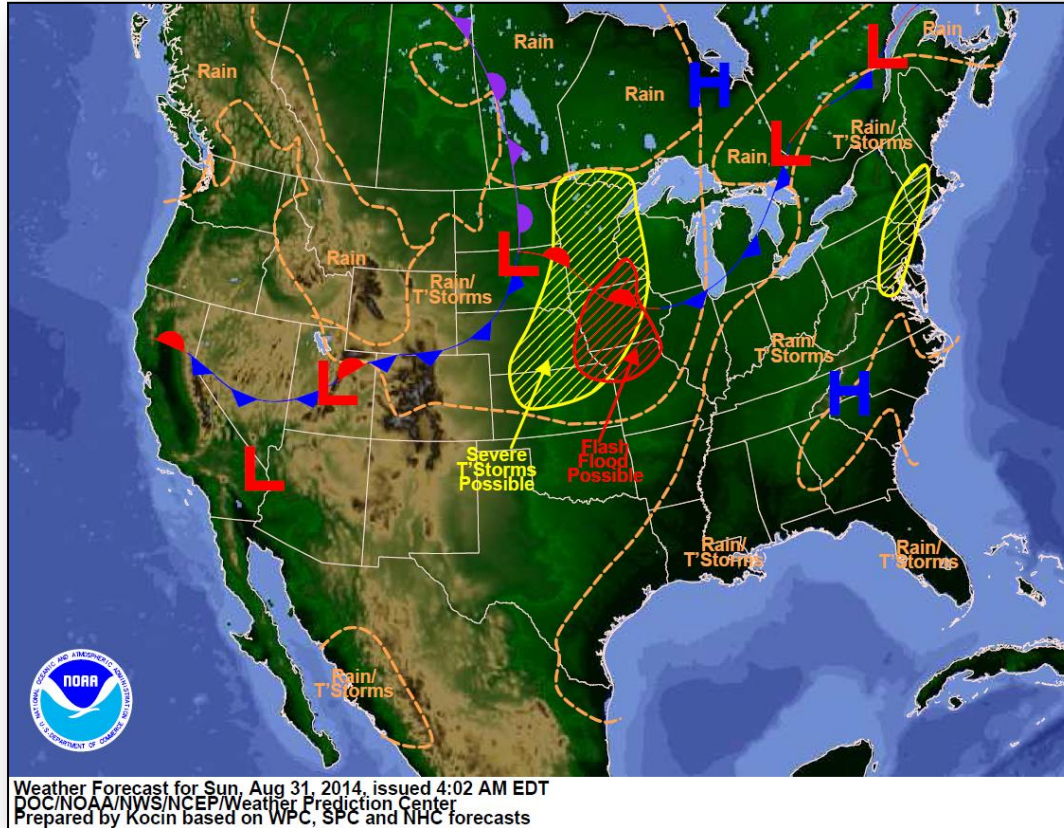


Region	State / Location	Event	IA/PA	Number of Counties		Start – End
				Requested	Complete	
II	NJ	Heavy Rainfall/Flooding August 12-13, 2014	IA	1	1	8/28 – 8/29
V	MI	Heavy Rainfall & Flooding August 11-12, 2014	IA	3	3	8/26 – 8/29
			PA	3	0	9/3 – TBD
IX	HI	Hurricane Iselle August 7-9, 2014	IA	1	1	8/15 – 8/18
			PA	2	0	8/25 – TBD
IX	CA	South Napa Earthquake August 24, 2014	IA	2	1	8/27 – TBD
			PA	2	1	8/27 – TBD
X	WA	Mudslides & Flooding August 21-22, 2014	PA	1	1	8/28 – 8/29

National Weather Forecast



FEMA

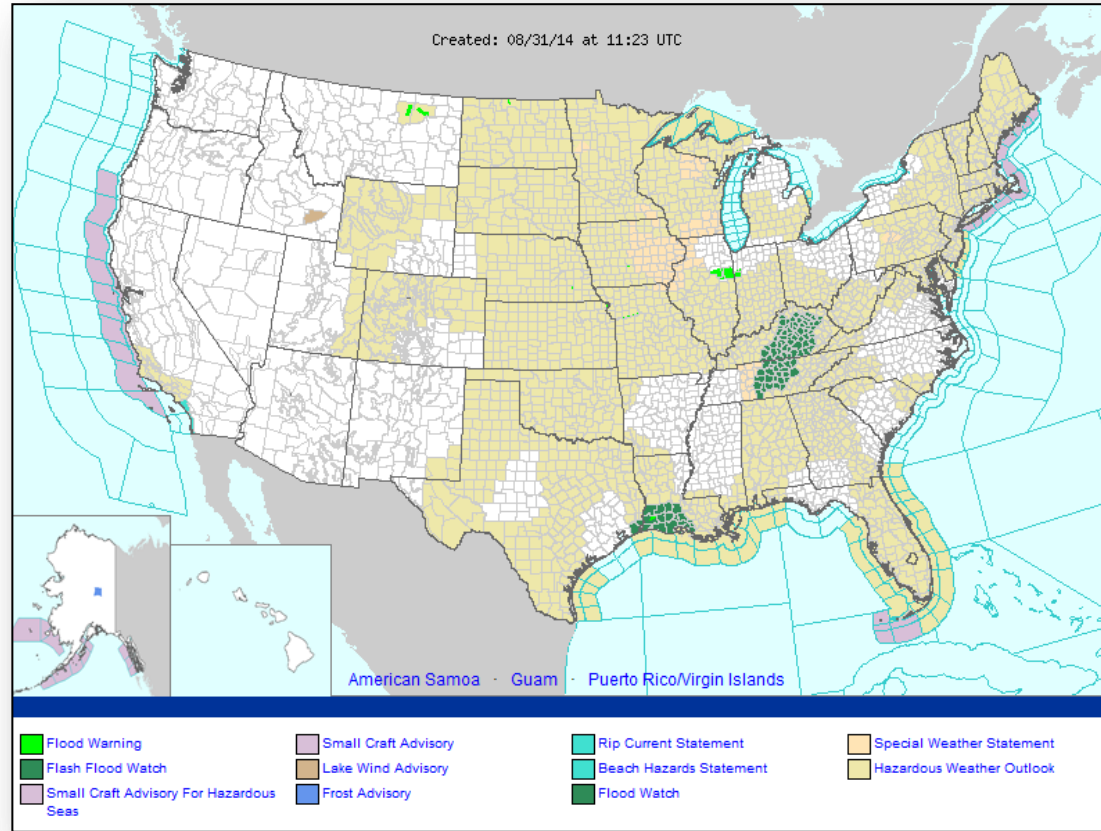


Weather Forecast for Sun, Aug 31, 2014, issued 4:02 AM EDT
DOC/NOAA/NWS/NCEP/Weather Prediction Center
Prepared by Kocin based on WPC, SPC and NHC forecasts

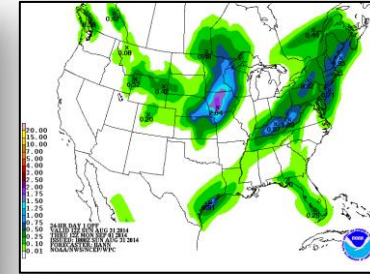
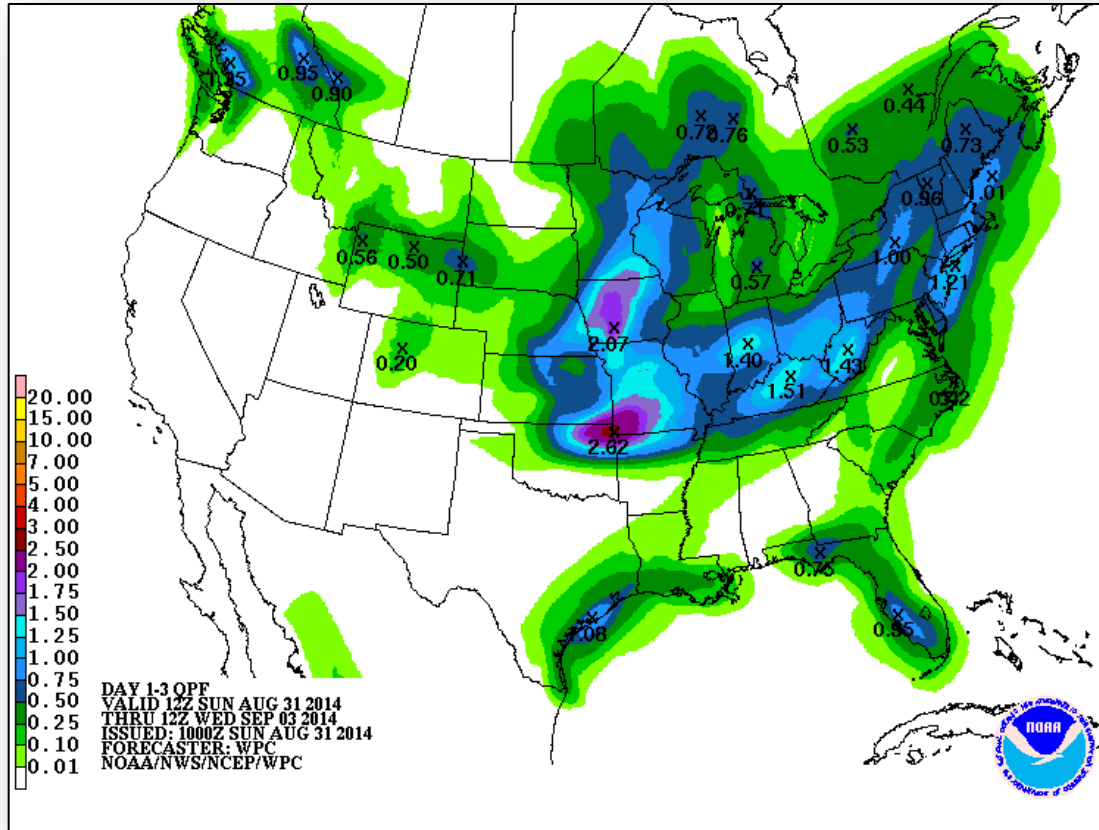
Active Watches/Warnings



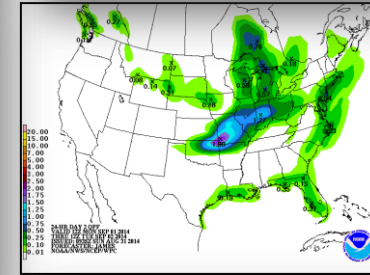
FEMA



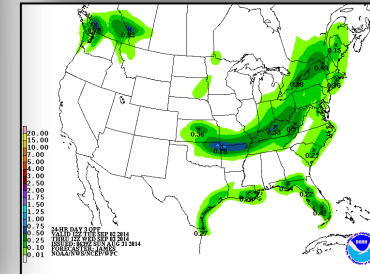
Precipitation Forecast – 3 Day



Day 1

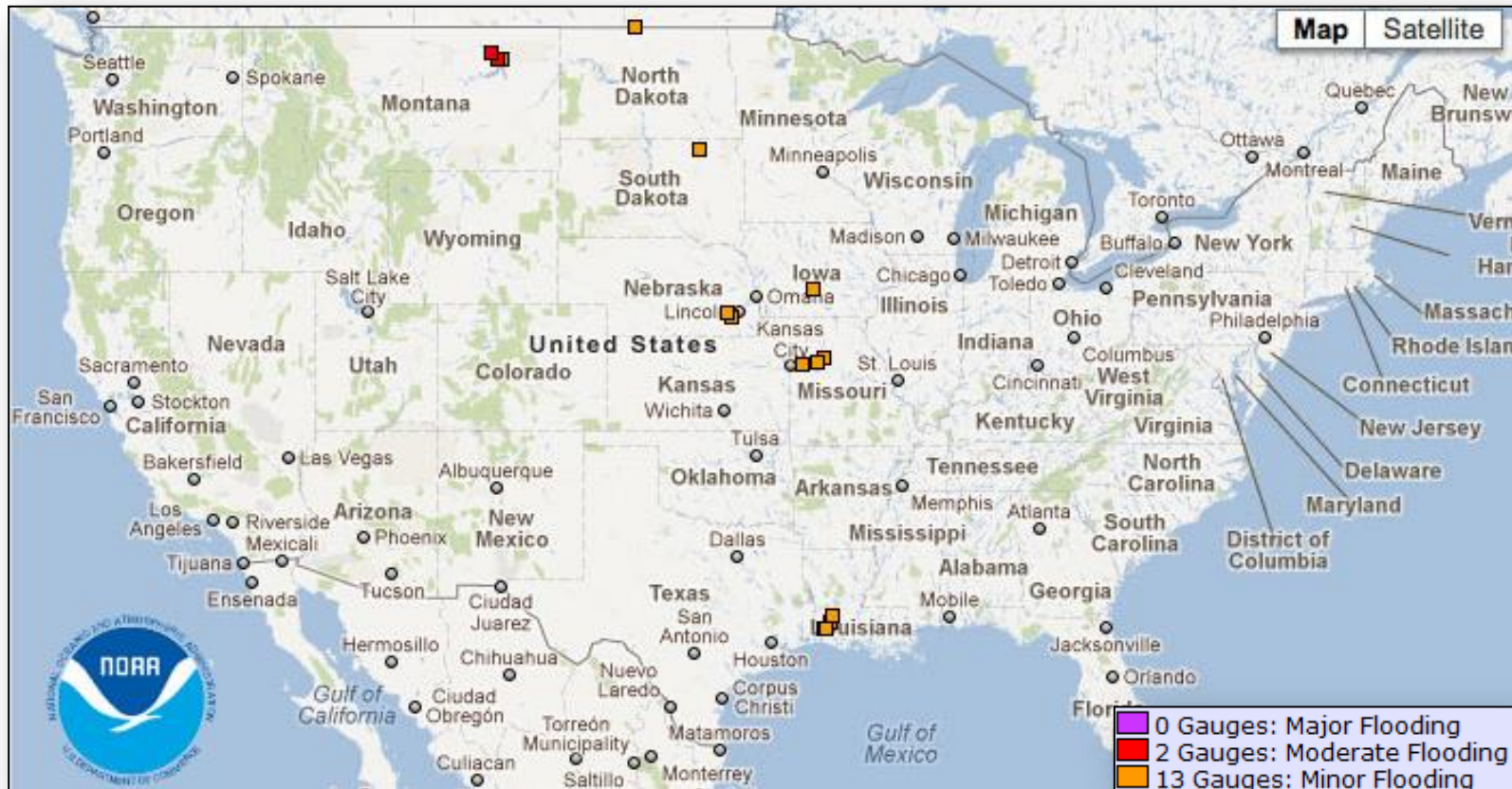


Day 2

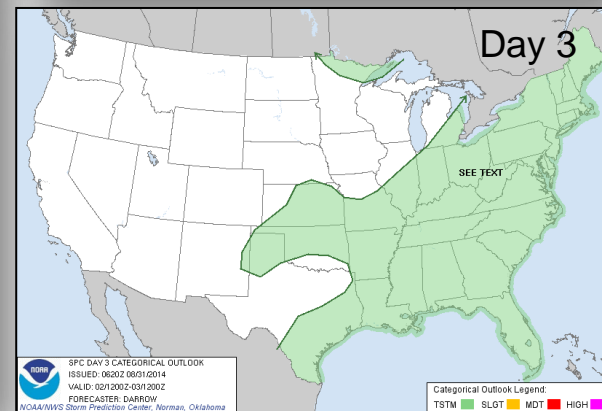
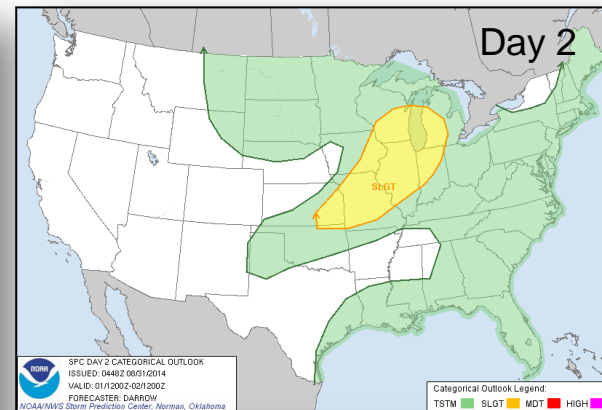
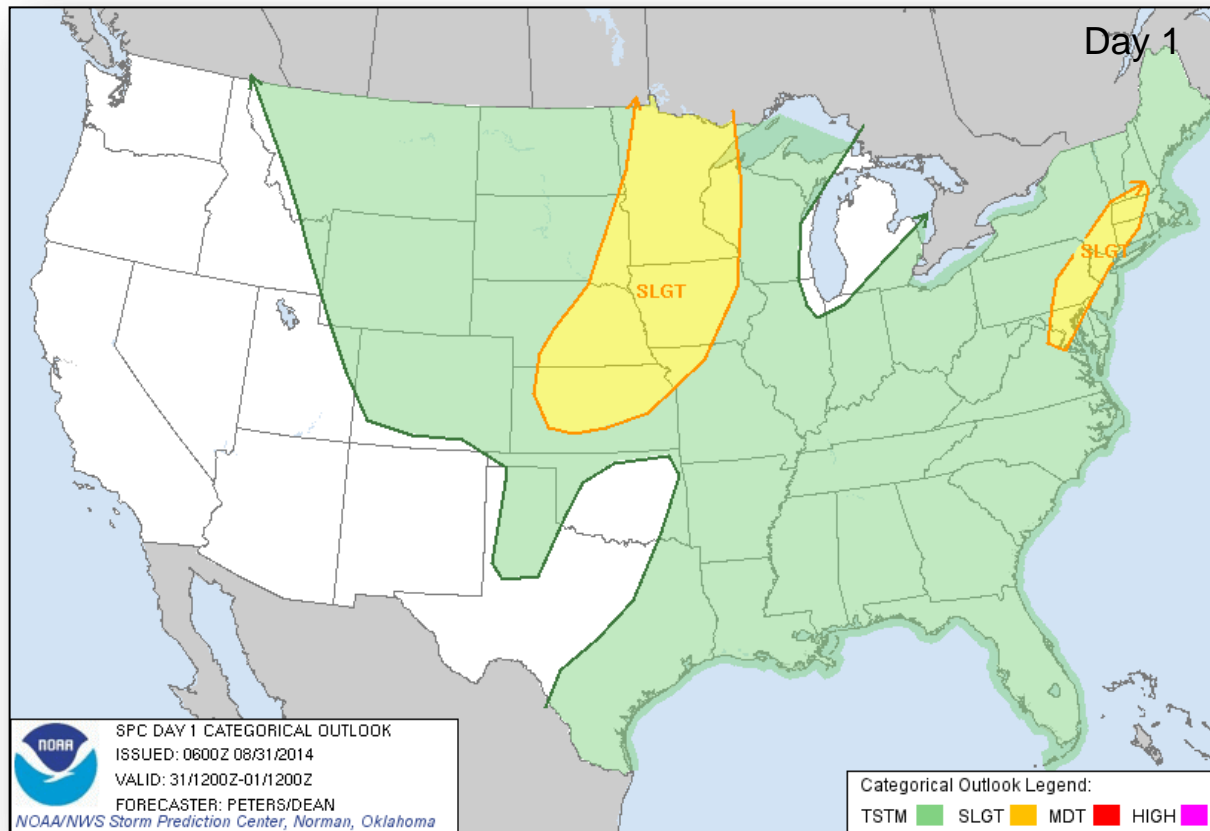


Day 3

River Forecast



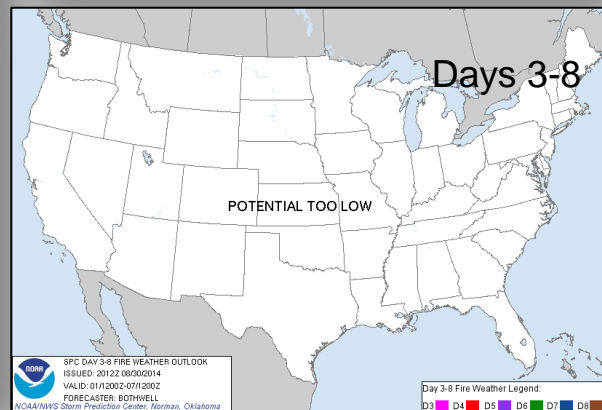
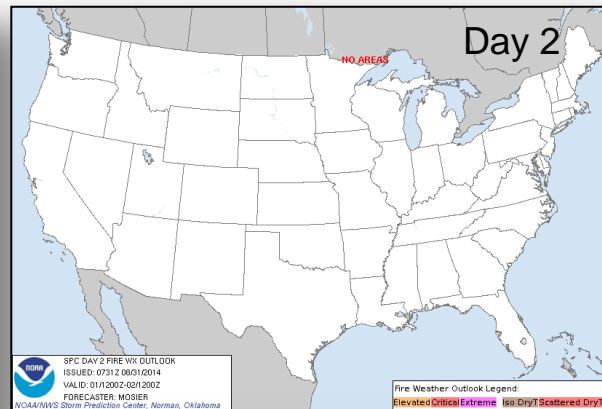
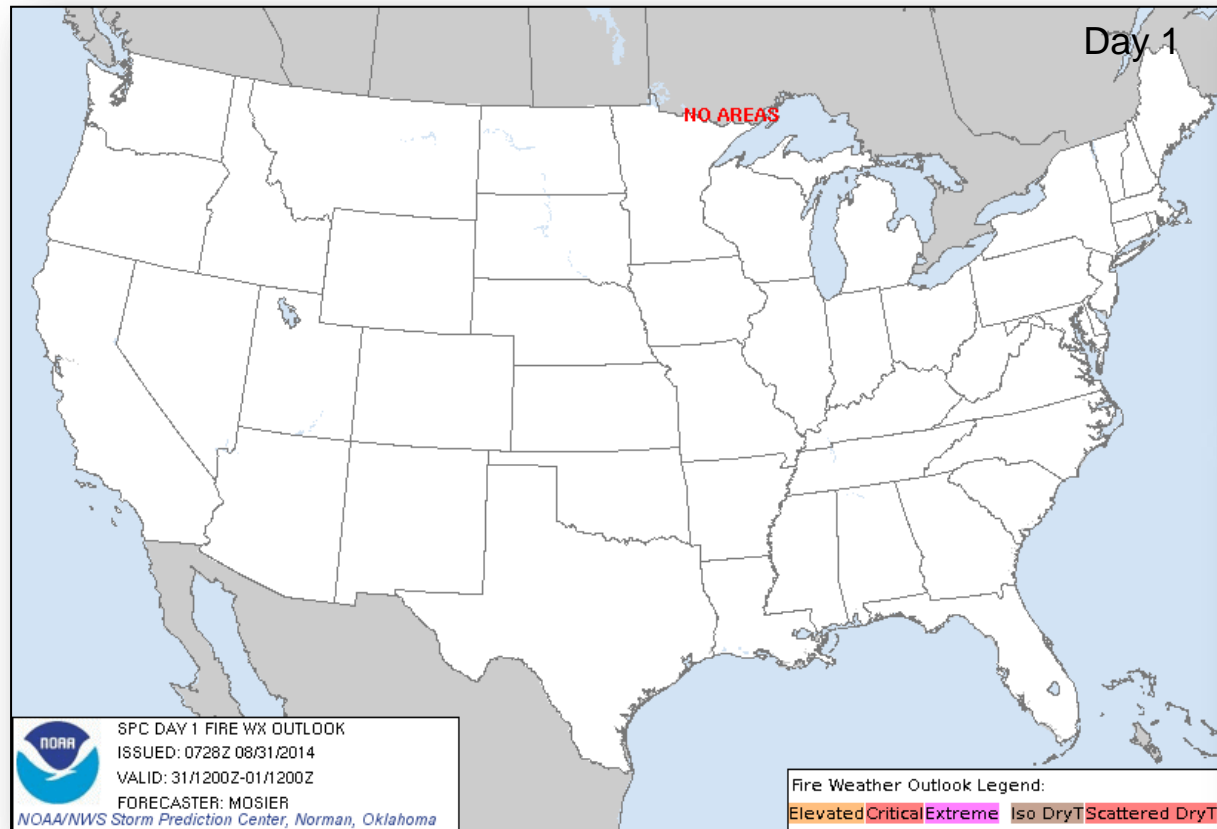
Convective Outlook, Days 1 – 3



Fire Weather Outlook, Days 1 – 8



FEMA

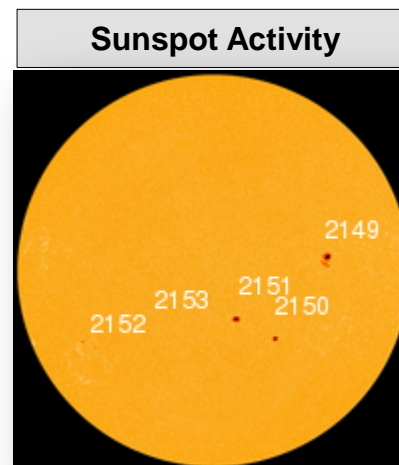
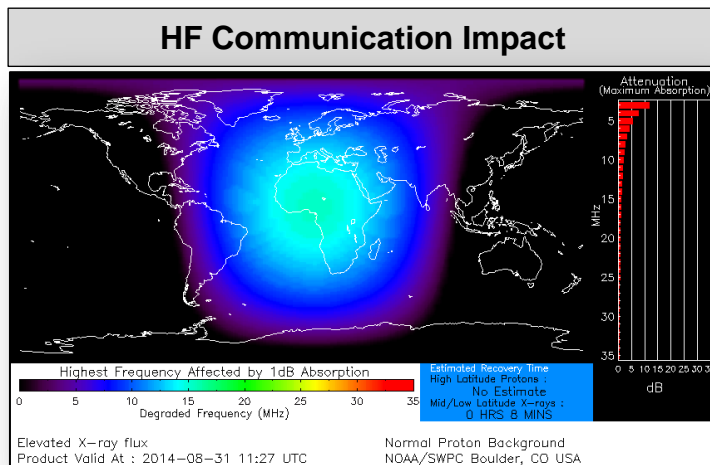


Space Weather



FEMA

NOAA Scales Activity (Range: 1/minor to 5/extreme)	Past 24 Hours	Current	Next 24 Hours
Space Weather Activity:	None	None	None
• Geomagnetic Storms	None	None	None
• Solar Radiation Storms	None	None	None
• Radio Blackouts	None	None	None



FEMA Readiness – Deployable Teams/Assets



Deployable Teams/Assets									
Resource	Status	Total	Available		Partially Available	Not Available	Detailed Deployed Activated	Comments	Rating Criterion
FCO		39	18	47%	0	1	20		OFDC Readiness: FCO Green Yellow Red Type 1 3+ 2 1 Type 2 4+ 3 2 Type 3 4 3 2
FDRC		10	5	50%	0	0	5		FDRC 3 2 1
US&R		28	26	93%	1	1	0	<ul style="list-style-type: none">NM-TF1 (Red for personnel shortages)CA-TF1 (Yellow for logistics & management)	<ul style="list-style-type: none">Green = Available/FMCYellow = Available/PMCRed = Out-of-ServiceBlue = Assigned/Deployed
National IMAT		3	2	67%	0	0	1	<ul style="list-style-type: none">National IMAT West to CA	<ul style="list-style-type: none">Green: 3 availYellow: 1-2 availRed: 0 avail (<i>Individual N-IMAT red if 50% of Section Chiefs and/or Team Leader is unavailable for deployment.</i>)
Regional IMAT		13	4	31%	3	4	2	<u>Partially Mission Capable (PMC):</u> <ul style="list-style-type: none">Region II, III, VI <u>Not Mission Capable (NMC):</u> <ul style="list-style-type: none">Region V, VII, IX (Team 1), VI (Team 2) <u>Deployed</u> <ul style="list-style-type: none">Region X to WARegion VIII to ND	<ul style="list-style-type: none">Green: 7 or more availYellow: 4 - 6 teams availableRed: > 8 teams deployed/unavailable <i>R-IMAT also red if TL Ops/Log Chief is unavailable and has no qualified replacement.</i>
MCOV		60	53	89%	0	7	0		<ul style="list-style-type: none">Green = 80 – 100% availYellow = 60 – 79% availRed = 59% or below availReadiness remains 95%

FEMA Readiness – National/Regional Teams



National/Regional Teams									
Resource	Status	Total	Available		Partially Available	Not Available	Deployed/ Activated	Comments	Rating Criterion
NWC		5	5	100%	0	0	24/7		<div>• Green = FMC</div> <div>• Yellow = PMC</div> <div>• Red = NMC</div>
NRCC		2	344	89%	0	44	Not Activated		
HLT		1	N/A	N/A	0	1	Activated		
DEST							Not Activated		
RRCCs		10	10	100%	0	0	None		
RWCs/MOCs		10	10	100%	0	0	24/7	<div>• Region IX RWC returned to Watch/Steady State</div>	



FEMA

FEMA's mission is to support our citizens and first responders to ensure that as a nation we work together to build, sustain, and improve our capability to prepare for, protect against, respond to, recover from, and mitigate all hazards.