

The Disaster Center is dedicated to the idea that disaster mitigation is cost effective and individuals pursuing their own interest are the greatest potential force for disaster reduction.

Please consider making a small donation to the Disaster Center



When disaster mitigation is cost effective, we are on the road to bringing disasters to an end.



FEMA

Daily Operations Briefing

Friday, March 6, 2020

8:30 a.m. ET

National Current Operations & Monitoring



FEMA

Significant Incidents or Threats:

- Tornadoes – Tennessee Response/Recovery - **FINAL**
- Snow – Cascades / Sierra Nevada, Central Appalachians, and Lower Great Lakes

Declaration Activity:

- Approval: Major Disaster Declaration – FEMA-DR-4476-Tennessee

Tornadoes – Tennessee - FINAL



FEMA

Situation: A storm system moved through the state of Tennessee bringing tornadic activity, heavy rain, hail, and powerful winds, through the west and middle regions of the state. Seven tornadoes reported as a combination of EF-2, EF-3 and one EF-4, leaving a wide path of destruction through the counties of Davidson, Wilson, Putnam, Gibson, Carroll, and Benton.

Lifeline Impacts:

Safety and Security:

- Five schools closed; relocation plans being established for students
- 1,546 structures damaged/destroyed; damage assessments continue
- SAR missions are complete; all persons accounted for

Food, Water, Shelter:

- 6 shelters open / 120 (+11) occupants (ARC shelter count, 5:30 a.m. ET)

Health and Medical:

- 24 confirmed fatalities; 65 injuries reported

Energy:

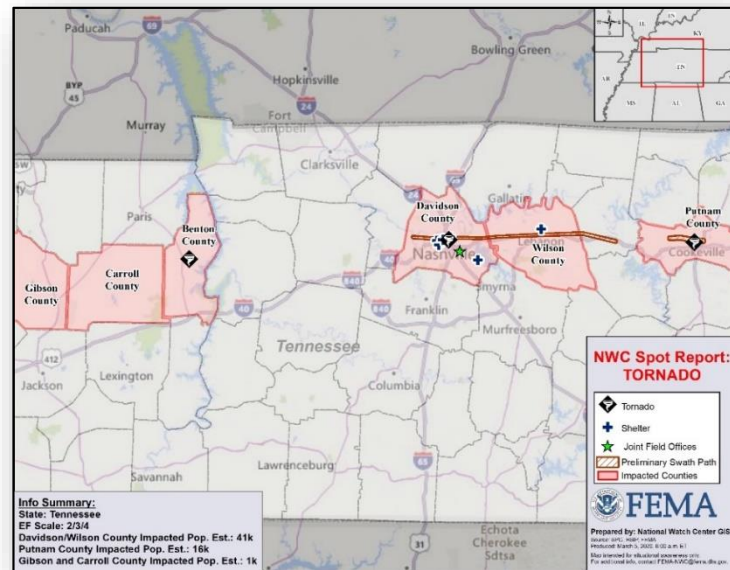
- 12k (-9k) customers statewide down from peak 82k (* EAGLE-1 as of 7:30 a.m. ET)

Transportation:

- John C. Tune Municipal Airport remains closed
- Music City Star transit service (local rail service) remains closed due to debris; alternate transit services available and all major roadways open

State/Local Response:

- TN EOC at Partial Activation; Governor declared a State of Emergency

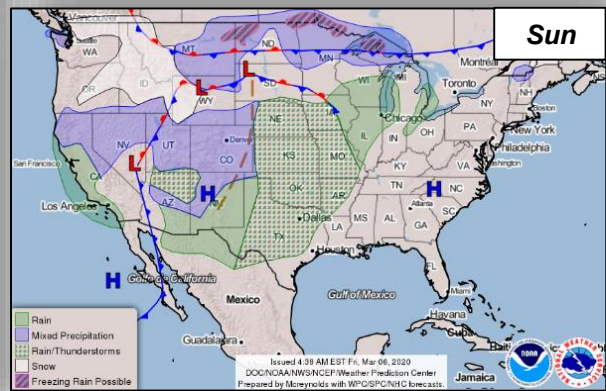
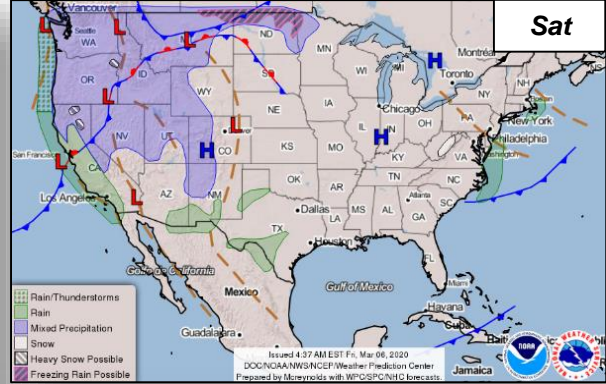
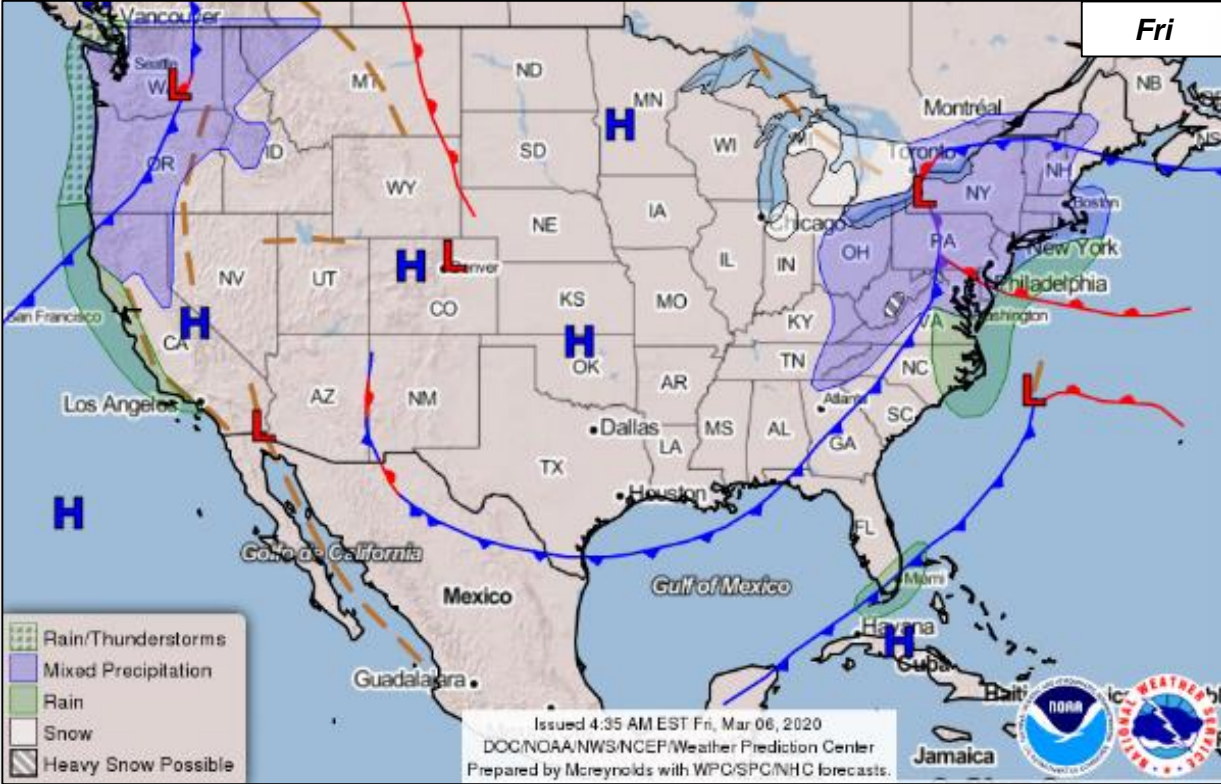


Federal Response:

- Region IV: RRCC: rostered; RWC continues to monitor
 - IMAT-2 Deployed to TN EOC
 - FEMA Initial Operating Facility (IOF) established at TN EOC
- FEMA NWC continues to monitor
- Major Disaster Declaration FEMA-4476-TN approved March 5

*Note: Customer outage data is provided by the Department of Energy's EAGLE-1 system. Comprehensive National coverage of all electrical service providers is not available.

National Weather Forecast



Joint Preliminary Damage Assessments



FEMA

Region	State / Location	Event	IA/PA	Number of Counties		Start – End
				Requested	Completed	
IV	KY	Severe Storms & Flooding Feb 3	IA	4	4	2/26 – 2/28
			PA	25	9	2/25 – TBD
	MS	Severe Storms, Flooding, & Mudslides Feb 10-18	IA	0	0	N/A
			PA	14	0	3/5 – TBD
V	IL	Severe Storms & Lake Shore Flooding Jan 10-12	IA	0	0	N/A
			PA	2	1	2/24 – TBD
X	WA	Flooding, Landslides & Mudslides Jan 20 – Feb 10	IA	7	0	3/2 – TBD
			PA	18	18	2/24 – 2/29

Declaration Approved



Declaration: Major Disaster Declaration
FEMA-4476-DR-TN Tennessee

Requested: Mar 5

Approved: Mar 5

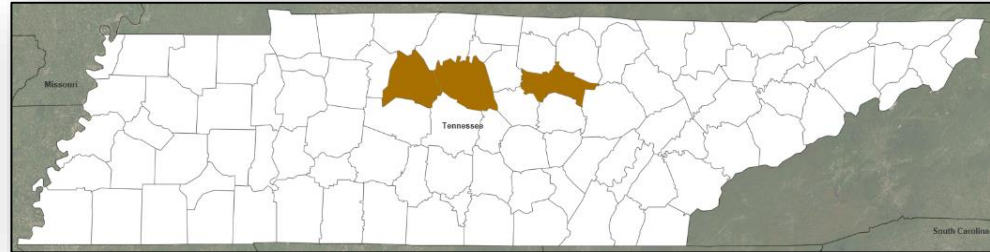
Incident: Severe Storms, Tornadoes, Straight-line Winds, and Flooding

Incident Period: Mar 3

Includes:

- **IA & PA:** 3 Counties
- **Hazard Mitigation:** Statewide

FCO: Myra M. Shird



■ IA & PA

Declaration Requests in Process – 4



FEMA

State / Tribe / Territory – Incident Description	Type	IA	PA	HM	Requested
TX – Severe Storms, Straight-line Winds, and Tornadoes	DR		X	X	Jan 13
AK – Severe Storms and Flooding – DENIED (Mar 5)	DR		X	X	Feb 6
WI – Severe Winter Storm and Flooding	DR		X	X	Feb 10
MS – Severe Storms, Tornadoes, Straight-line Winds, and Flooding	DR		X	X	Feb 10
AR – Severe Storm, Straight-line Winds, and a Tornado (Appeal)	DR		X	X	Feb 20
TN – Severe Storms, Tornadoes, Straight-line Winds, and Flooding – APPROVED (Mar 5)	DR	X	X	X	Mar 5

FEMA Common Operating Picture



FEMA

FEMA HQ	
NWC	NRCC
Monitoring	ROC

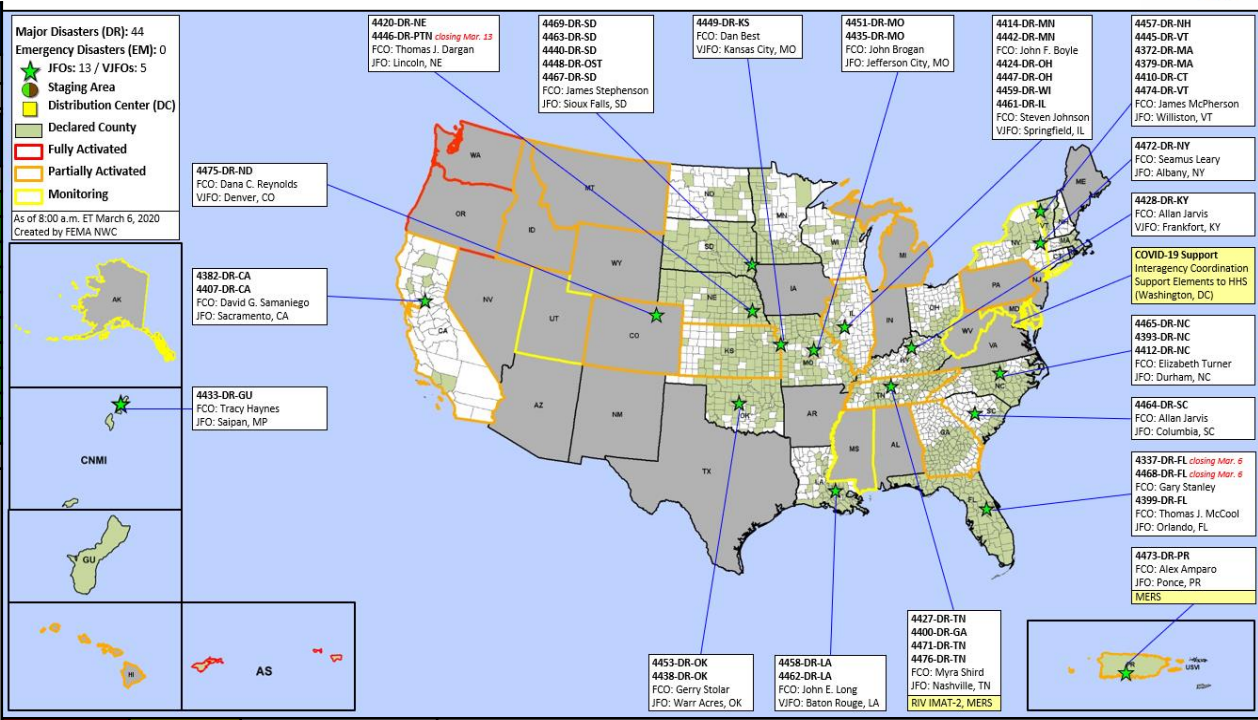
FEMA REGIONS		
WATCH	RRCC	
Monitoring	I	Rostered
Monitoring	II	Rostered
Monitoring	III	Rostered
Monitoring	IV	Rostered
Monitoring	V	Rostered
Monitoring	VI	Rostered
Monitoring	VII	Rostered
Monitoring	VIII	Rostered
Monitoring	IX	Rostered
Monitoring	X	Rostered

Notes:

ROC: COVID-19

AS: Measles
 KS: Fire WX
 MS: Flooding
 PR: Earthquake
 TN: Tornadoes
 GA: Flooding

COVID-19:
 AK, CA, CO, DC, DE,
 HI, ID, IL, MD, MI, MT,
 NY, OR, PA, UT, WA,
 WV



N-IMATs	
3 Teams	
Red	
Blue	
Gold	

R-IMATs	
≥ 7 Teams	
I	1
II	
III	
IV-1	
IV-2	TN
V	
VI-1	
VI-2	2
VII	
VIII	
IX-1	
IX-2	
X	3

FMC	PMC
NMC	Deployed

Team:	US&R	MERS	FCOs	FDRCs	IM WORKFORCE
Status	>66%	>66%	≤ 1 Type I	≤ 1	
Assigned:	28	36	45	11	13,992 ▼
Unavailable:	0	0	3	0	3,783 ▼
Deployed:	0	2	32	9	5,555 ▲
Available:	28	34	10	2	4,654 / 33% ▼

IM CADRE AVAILABILITY SUMMARY	
Cadres with 25% or Less Availability	
ADR 20% (10/49); EHP 19% (118/615); FL 19% (31/162); PA 17% (515/3,032)	



FEMA

FEMA's mission is helping people before, during, and after disasters.

Click [here](#) to subscribe to this briefing.