

The Disaster Center is dedicated to the idea that disaster mitigation is cost effective and individuals pursuing their own interest are the greatest potential force for disaster reduction.

Please consider making a small donation to the Disaster Center



When disaster mitigation is cost effective, we are on the road to bringing disasters to an end.



FEMA

Daily Operations Briefing

Friday, April 24, 2020

8:30 a.m. ET

National Current Operations & Monitoring



FEMA

Significant Incidents or Threats:

- COVID-19
- Severe Thunderstorms/Heavy Rain – Southern Plains and Lower Mississippi, Florida

Tropical Activity:

- Eastern Pacific: Disturbance 1: Medium (50%)

Declaration Activity:

- Approval: Major Disaster Declaration – WA, MS
- Request: Major Disaster Declaration – GA
- Request: Major Disaster Declaration (COVID) – Seminole tribe of Florida (STOF)

COVID-19 Update



FEMA

Situation: FEMA, HHS, and federal partners are working with our state, local, tribal, and territorial governments to execute a whole-of-America response to the COVID-19 pandemic. The federal government is coordinating the deployment of PPE and ventilators from multiple sources including SNS, donations, and vendor procurements. The President released Guidelines for Opening American Up Again and the Federal Government is continuing to work with governors across the country to ensure they have the equipment, supplies, and testing resources they need to reopen safely and responsibly.

- FEMA NRCC remains at Level I in unified effort with HHS SOC; all FEMA RRCCs activated
- FEMA IMAT-A teams deployed to 27 states/territories; LNOs deployed to 37 states/territories
- 56 major disaster declarations approved; All State / Territory EOCs activated
- 33,357 FEMA, DOD, HHS, and CDC personnel deployed/activated in support of COVID-19 response
- Testing: [4,934,686](#) cumulative as of [Apr 23](#)

Operational Task Forces

Community Mitigation Measures

- Finalized guidance on re-opening for childcare, summer camps, communities of faith, employers with vulnerable populations, bars and restaurants, mass transit, and amusement parks; at White House for approval

Data and Analysis

- Developing Vulnerable Population data dashboard in the HHS COP to aid decision-makers with metro, county, and state statistical data

Health and Medical Lifeline

Public Health - Screening

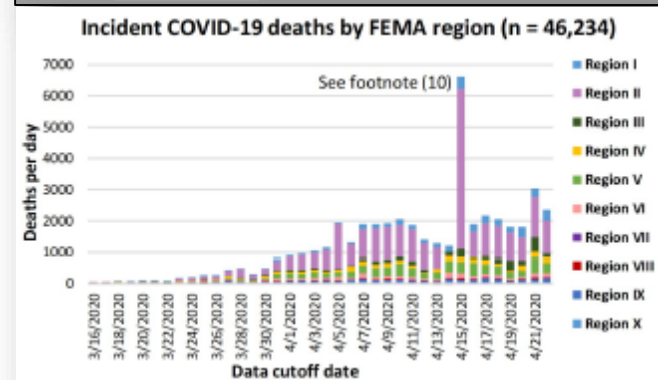
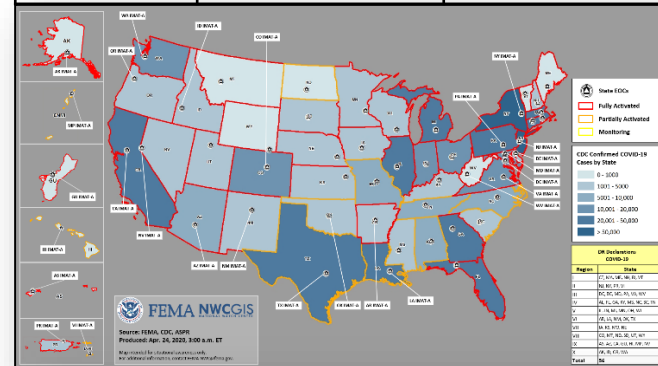
- NY: Coordinating White House request for NYC to be the “Restore America” pilot city for the serology/phlebotomy screening
- CA became the first State to recommend testing for asymptomatic people in high-risk settings, adding 86 additional testing sites

Safety and Security Lifeline

- USCG facilitated the safe discharge of over 275k passengers from over 125 cruise ships following cruise industry shutdown

(FEMA SLB COVID-19 5:00 pm ET Apr 23)

COVID-19	Confirmed	Deaths
United States	857,820 (+31,911)	48,185 (+1,951)
Worldwide	2,544,792 (+73,657)	175,694 (+6,689)



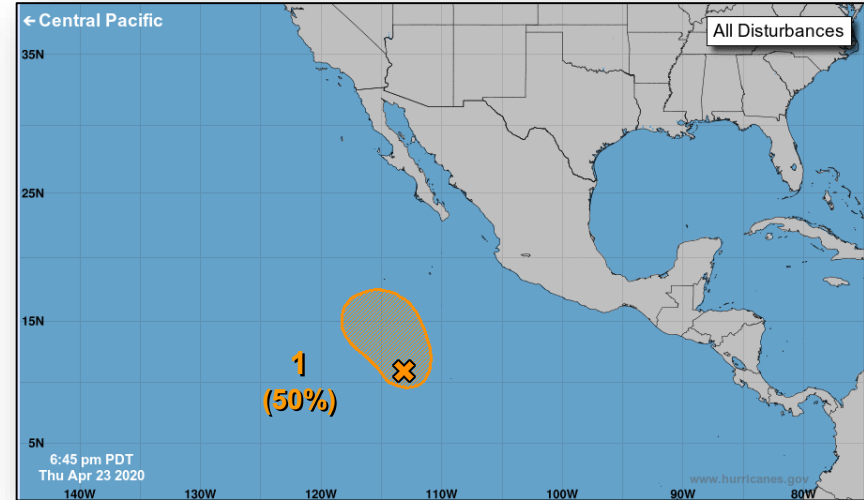
Footnote: (10) The large spike in the U.S. deaths on 15APR2020 due to inclusion of deaths of probable cases

Tropical Outlook – Eastern Pacific



Disturbance 1 (as of 9:45 p.m. ET)

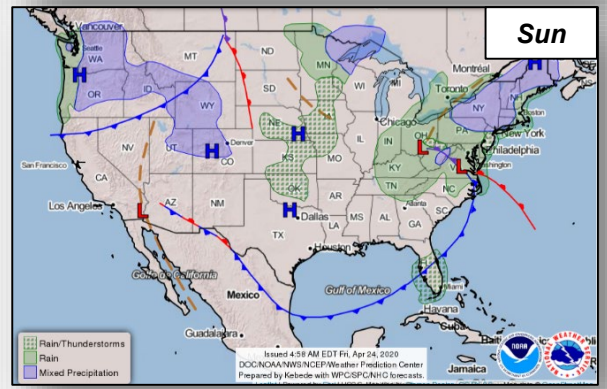
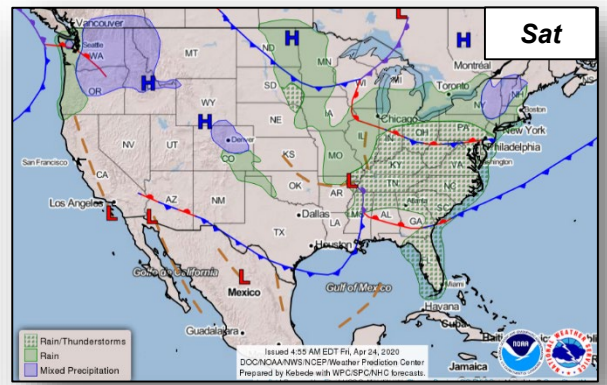
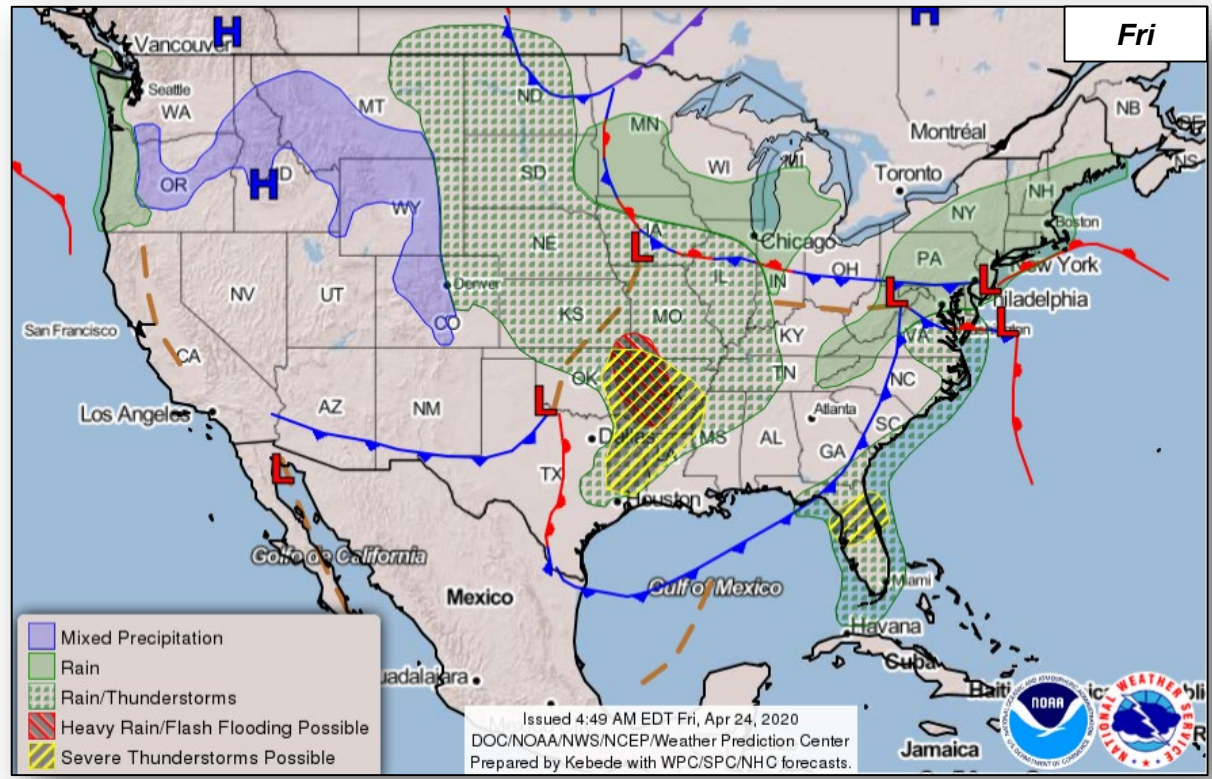
- 900 miles SSW of southern tip of Baja California Peninsula, Mexico
- Moving slowly NW
- Tropical depression could form in the next day or two
- Formation chance through 48 hours: Medium (50%)
- Formation chance through 5 days: Medium (50%)



Current Disturbances & 5 Day Cyclone Formation: < 40% | 40-60% | > 60%
Tropical / Sub-Tropical Cyclone: Depression | Storm | Hurricane | Post-Tropical Cyclone / Remnants

Potential track area: Day 1-3 | Day 4-5 | Watches: Hurricane | Trop Stm | Warnings: Hurricane | Trop Stm | Current wind extent: Hurricane | Trop Stm

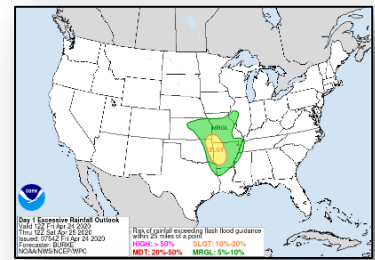
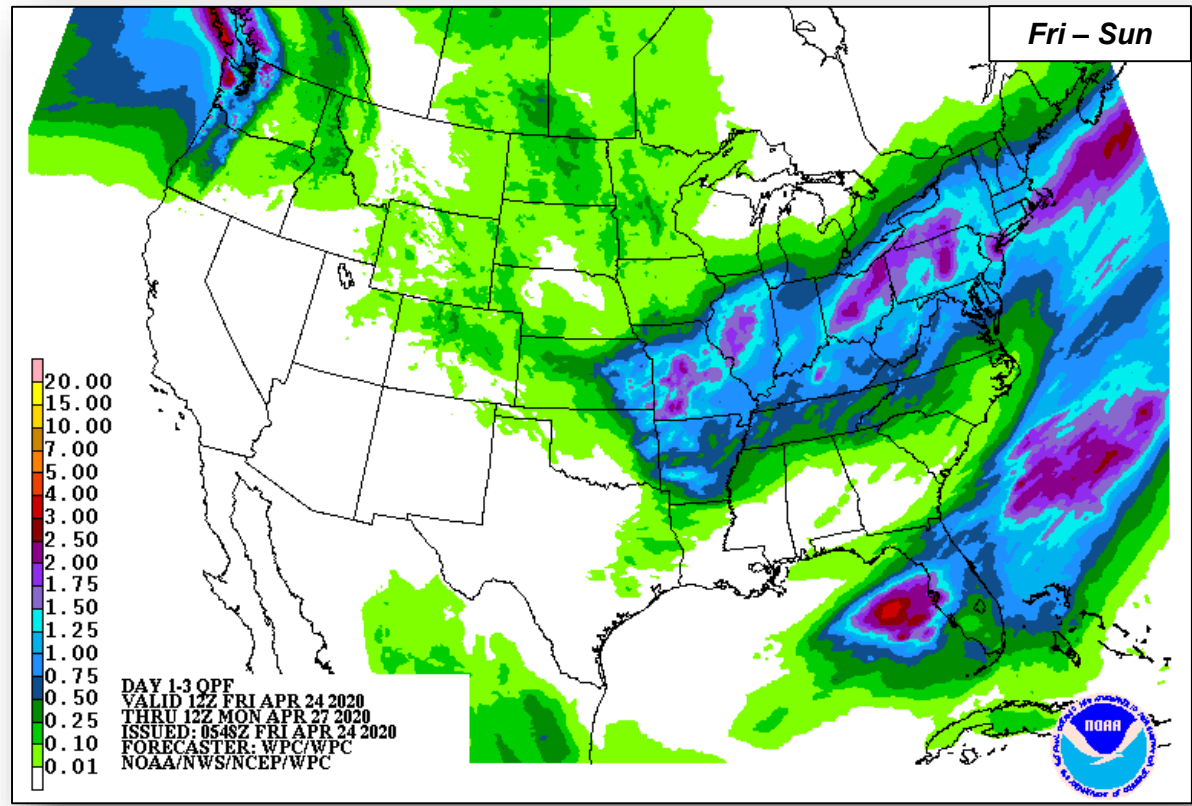
National Weather Forecast



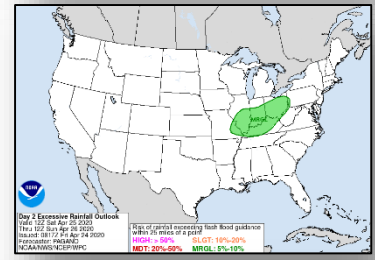
Precipitation & Excessive Rainfall



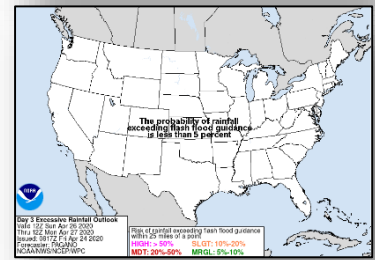
FEMA



Fri

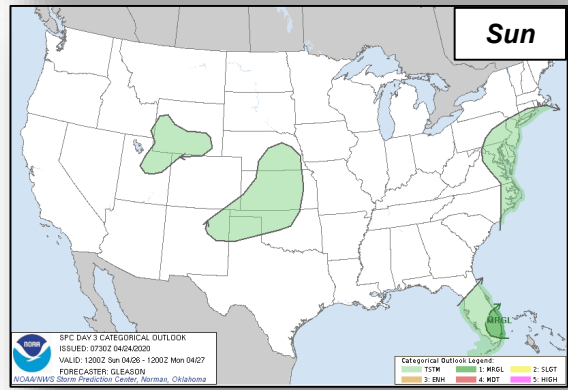
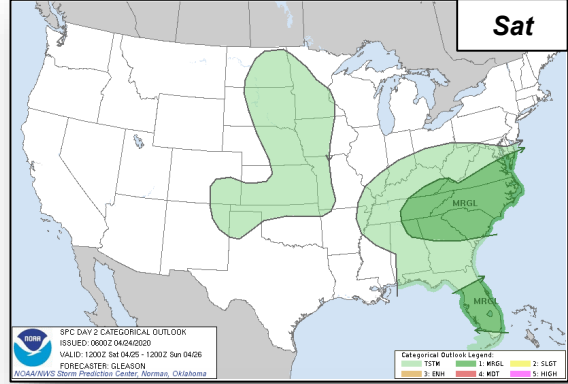
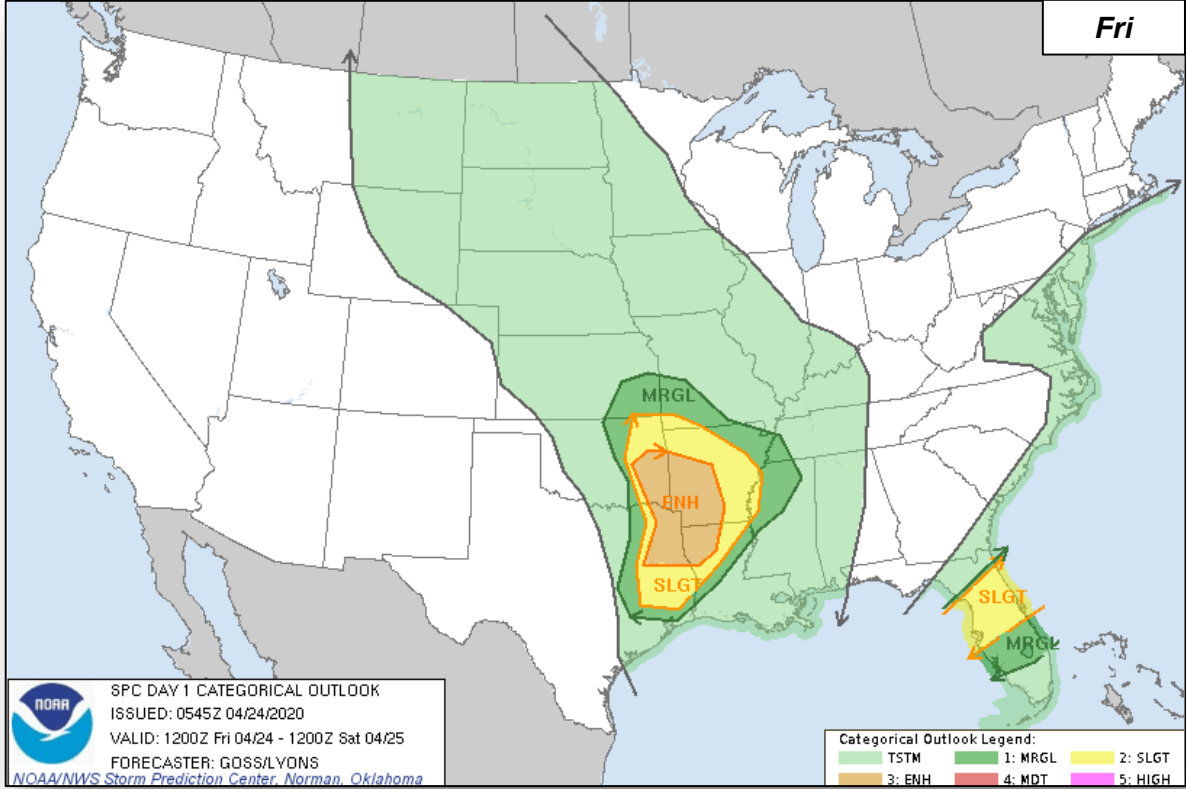


Sat



Sun

Severe Weather Outlook



Joint Preliminary Damage Assessments



FEMA

Region	State / Location	Event	IA/PA	Number of Counties		Start – End
				Requested	Completed	
IV	AL	Severe Storms, Tornadoes, Straight-line Winds, Flooding, and Mudslides Feb 6 – Mar 6	IA	0	0	N/A
			PA	20	10 (+2)	4/20 – TBD
	SC	Severe Storms, Tornadoes and Straight-line Winds Apr 21	IA	9	3	4/21 – TBD
			PA	8	0	4/23 – TBD
VI	AR	Severe Storms & Tornado Mar 29	IA	1	0	4/15 – TBD
			PA	1	0	4/15 – TBD

Declaration Approved



FEMA

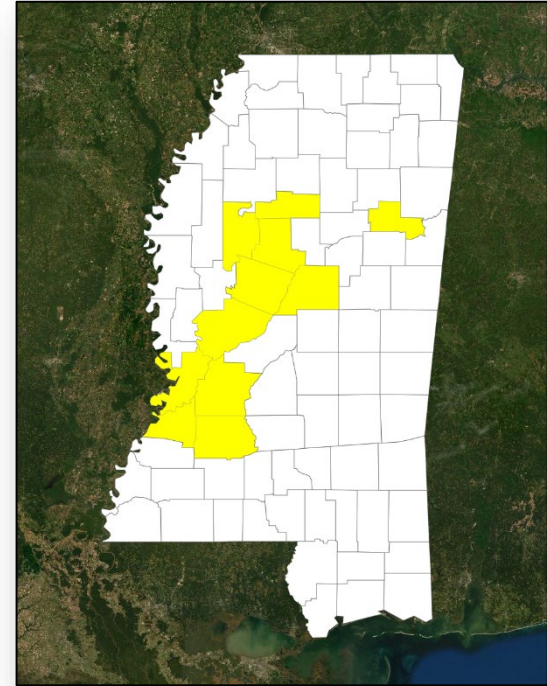
Declaration: Major Disaster Declaration FEMA-4538-DR-MS for Mississippi
Requested: March 17, 2020

Approved: April 23, 2020
Incident: Severe Storms, flooding, and mudslides
Incident Period: February 10-18, 2020

Provides:

- **IA:** not requested
- **PA Only:** 11 counties
- **Hazard Mitigation:** Statewide

FCO: Terry L. Quarles



■ PA

Declaration Approved



Declaration: Major Disaster Declaration FEMA-4539-DR-WA for Washington

Requested: March 25, 2020

Approved: March 25, 2020

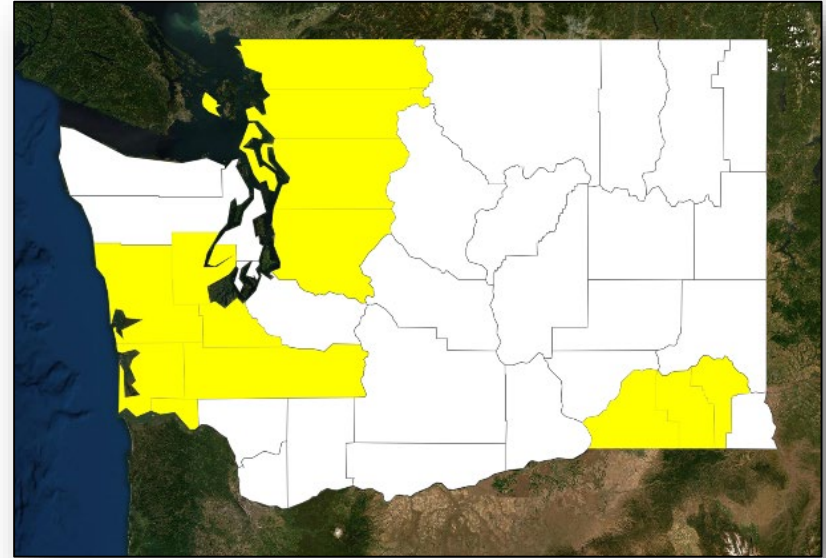
Incident: Severe storms, flooding, landslides, and mudslides

Incident Period: January 20 to February 10, 2020

Provides:

- **IA:** under review
- **PA Only:** 15 counties
- **Hazard Mitigation:** Statewide

FCO: Timothy B. Manner



■ PA

Declaration Request



Declaration: Major Disaster – Georgia
Requested: April 22, 2020

Incident: Severe storms, tornadoes, and straight-line winds

Incident Period: Apr 12-13, 2020

Includes:

- **IA:** 3 counties
- **PA:** not requested
- **Hazard Mitigation:** Statewide



■ IA

Declaration Request



Declaration: Major Disaster – Seminole Tribe of Florida (STOF)

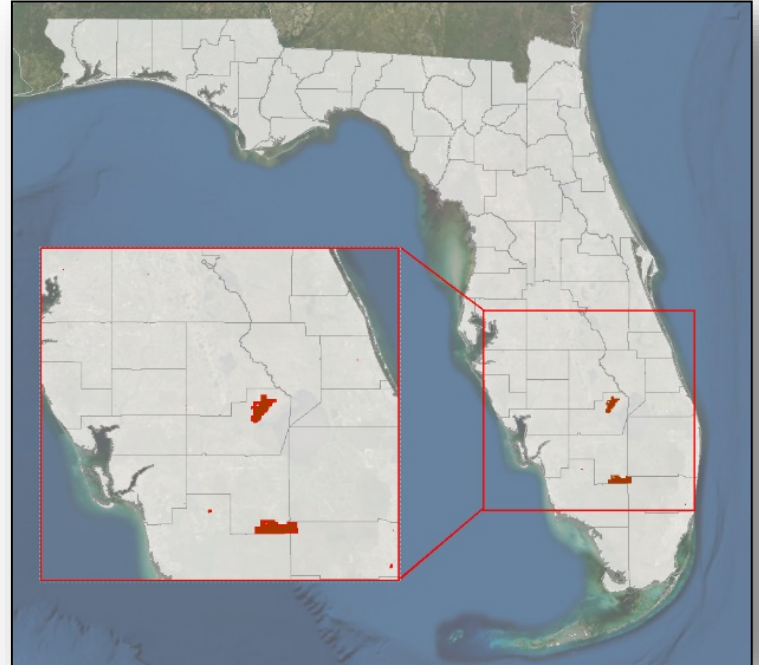
Requested: April 21, 2020

Incident: COVID-19

Incident Period: January 20, 2020 and continuing

Includes:

- **IA:** Crisis Counseling and Disaster Unemployment Assistance
- **PA:** Emergency protective measures (Category B) including direct federal assistance
- **Hazard Mitigation:** Seminole Tribe of Florida



 IA & PA

COVID-19 Declaration Requests in Process – 1



FEMA

State / Tribe / Territory – Incident Description	Type	IA	PA	HM	Requested
STOF (Seminole Tribe of Florida) – COVID-19	DR	X	X	X	Apr 21

Declaration Requests in Process – 7

State / Tribe / Territory – Incident Description	Type	IA	PA	HM	Requested
AR – Severe Storms, Straight-line Winds, and Tornadoes (Appeal)	DR		X	X	Feb 20
MS – Severe Storms, Flooding, Landslides, and Mudslides APPROVED (Apr 23)	DR		X	X	Mar 17
WA – Severe Winter Storms, Straight-line Winds, Flooding, Landslides, and Mudslides APPROVED (Apr 23)	DR	X	X	X	Mar 25
KY – Severe Storms, Flooding, Landslides, and Mudslides	DR	X	X	X	Mar 26
AK – Fire	DR		X	X	Apr 7
NC – Severe Storms, Tornadoes, and Flooding	DR		X	X	Apr 9
SC – Severe Storms, Tornadoes, and Straight-line Winds	DR	X	X	X	Apr 18
TN – Severe Storms, Tornadoes, Straight-line Winds, and Flooding	DR	X	X	X	Apr 21
GA – Severe Storms, Tornadoes, and Straight-line Winds	DR	X		X	Apr 22

FEMA Common Operating Picture



FEMA

FEMA HQ	
NWC	NRCC
Monitoring	Level I

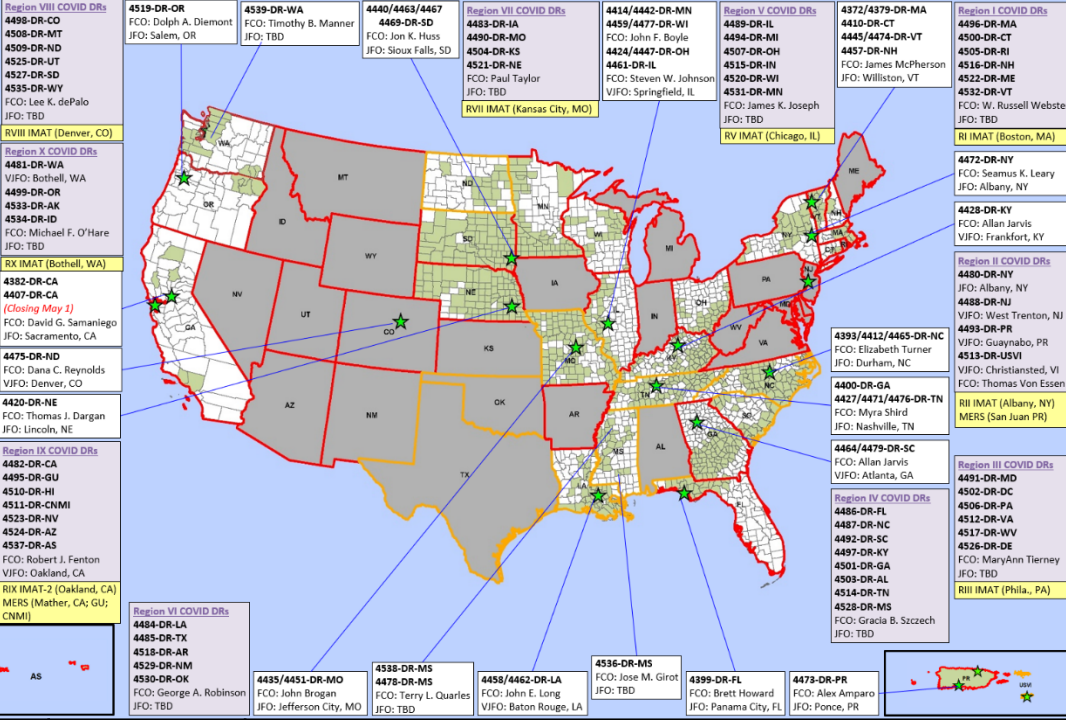
FEMA REGIONS		
WATCH	RRCC	
Monitoring	I	Level I
Monitoring	II	Level II
Monitoring	III	Level II
Monitoring	IV	Level II
Monitoring	V	Level II
Monitoring	VI	Level II
Alt Location	VII	Level II
Monitoring	VIII	Level II
Monitoring	IX	Level I
Monitoring	X	Level II

Notes:

COVID-19 NRCC w/ESFs (Days)	GA: Flooding MS: Flooding PR: Earthquake TN: Tornadoes
All RRCCs (Days)	All EOCs activated for COVID-19

- Major Disasters (DR): 99
Emergency Disasters (EM): 93
- ★ JFOs: 10 / VJFOs: 11
 - Staging Area
 - Distribution Center (DC)
 - Declared County (non-COVID-19 Declarations)
 - Fully Activated
 - Partially Activated
 - Monitoring

As of 8:00 a.m. ET April 24, 2020
Created by FEMA NWC



N-IMATs	
2 Teams	
Red	
Blue	
Gold	IMAT-A Support

R-IMATs	
4 - 6 Teams	
I	RRCC
II	NY
III	RRCC
IV-1	Virtual MS
IV-2	
V	RRCC
VI-1	
VI-2	
VII	RRCC
VIII	RRCC
IX-1	
IX-2	RRCC
X	RRCC

FMC	PMC
NMC	Deployed

Team:	US&R	MERS	FCOs	FDRCS	IM WORKFORCE
Status	33 - 65%	>66%	≤1 Type I	≤1	
Assigned:	28	36	47	11	13,441 ▲
Unavailable:	17 (-1)	0	1	0	2,776 ▼
Deployed:	0	1	43	10	5,881 ▲
Available:	11 (+1)	35	3	1	4,784 / 36%▲

IM CADRE AVAILABILITY SUMMARY	
Cadres with 25% or Less Availability	
EHP	21% (128/623)
FL	12% (19/160)
FM	23% (61/264)
HM	23% (281/1,221)
OPS	20% (56/284)
PA	24% (750/3,069)
PLAN	23% (98/423)
SAF	22% (12/55)



FEMA

FEMA's mission is helping people before, during, and after disasters.

Click [here](#) to subscribe to this briefing.