

FEMA National Watch Center

Daily Operations Briefing

Monday, July 12, 2021

8:30 a.m. ET



FEMA

National Current Ops / Monitoring

New Significant Incidents / Ongoing Ops

- Bootleg Fire – Oregon
- Texas Gulf Coast Flooding - Final

Hazard Monitoring

- Heavy rain and flash flooding – Southwest; Southern Plains; Lower Mississippi to Tennessee Valley; Ohio Valley to Great Lakes; Mid-Atlantic to Northeast
- Severe thunderstorms possible – Florida
- Excessive heat and elevated fire weather – Western States
- Tropical Activity:
 - Eastern Pacific:
 - Disturbance 1: High (70%)
 - Disturbance 2: High (70%)

Disaster Declaration Activity

- FMAG Approved – Bootleg Fire, OR

Event Monitoring

- None



FEMA

Bootleg Fire – Oregon

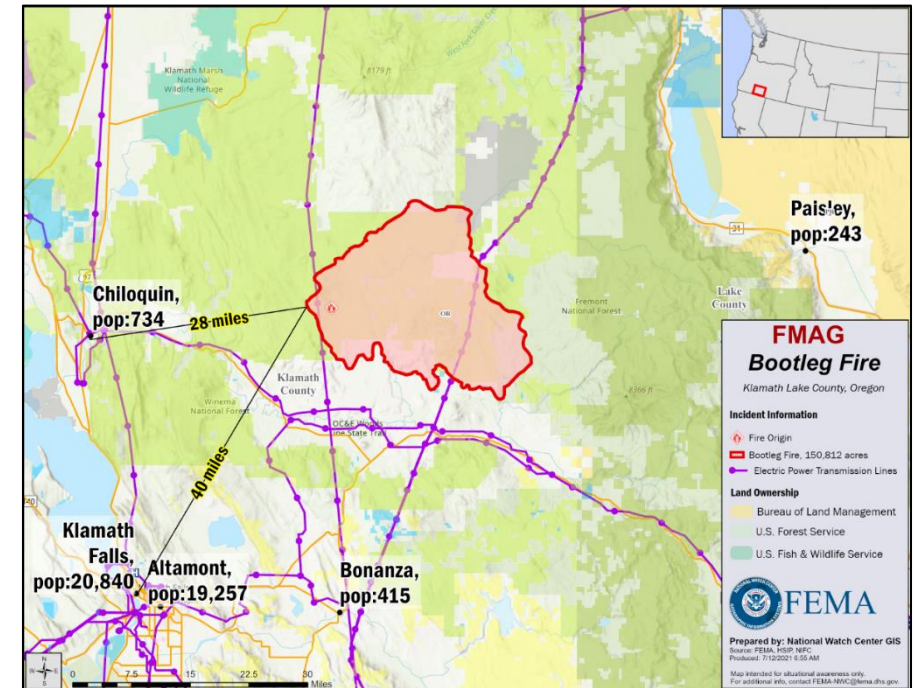
Fire Name (County, ST)	FMAG #	Acres Burned	Percent Contained	Evacuations	Structures (Homes / Other)			Fatalities / Injuries
					Threatened	Damaged	Destroyed	
Bootleg (Klamath, OR)	5396-FM-OR	150,812	0%	M: 1,000	H: 1,926	H: 0	H: 7	0 / 0
				V: 0	O: 0	O: 0	O: 43	

Situation:

- The fire began on July 6 and is threatening 1,926 homes (935 primary residences) in and around the communities of Sprague River, Sycan Estates subdivision, Bly, and Beatty (total population approximately 1,250)
- Also threatening roads, bridges, utilities, infrastructure, recreation and businesses

Response:

- OR EOC at Normal Operations
- Region X / Bothell MOC are monitoring
- FMAG approved on July 10, 2021



FEMA

Flooding – Texas - Final



Current Situation: Drier conditions will allow the moderate flooding to recede, as the areas have already crested

Lifeline Impacts: (Denton MOC Spot Report as of 9:54 p.m. ET, July 10)

Safety & Security:

- TX-TF1: 53 deployed to impacted areas
- No evacuations

Food, Water, Shelter:

- 1 shelter open with no occupants (ARC Midnight Shelter Count as of 7:33 a.m. ET July 12)

Energy:

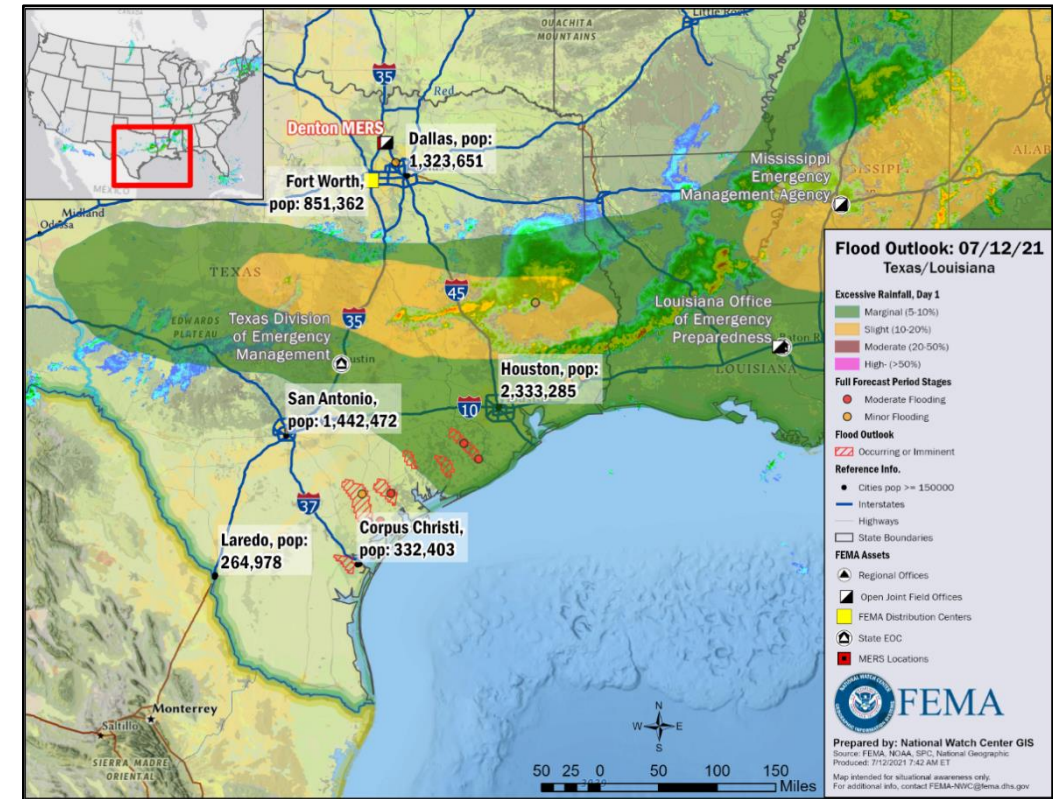
- Minimal power outages (Eagle-I as of 6:00 p.m. ET, July 11)

State / Local Response:

- TX EOC at Partial Activation (COVID-19 and severe weather)

FEMA / Federal Response:

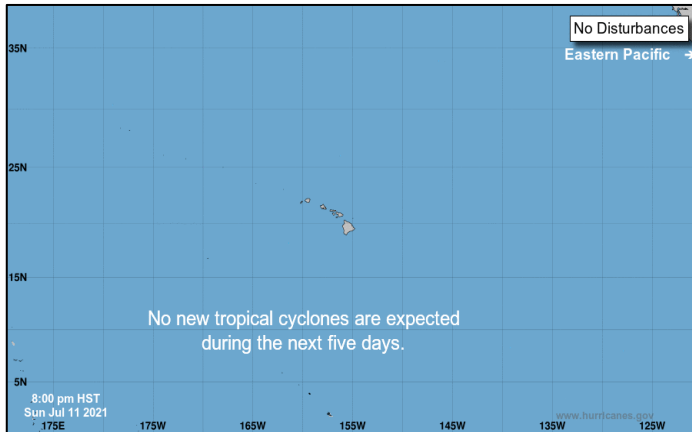
- Region VI / Denton MOC continue to monitor; RRCC at Level III (COVID-19)
- Region VI IMAT-1 and IMAT-2 are available
- Region VI staff at TX EOC will continue to coordinate with the state
- NWC continues to monitor



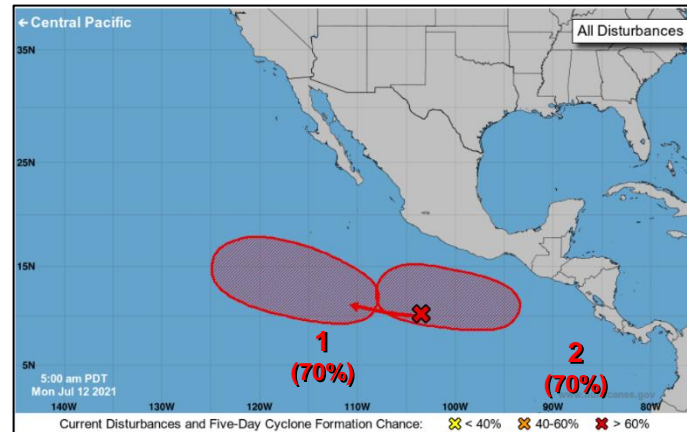
FEMA

Tropical Outlook – Five Day

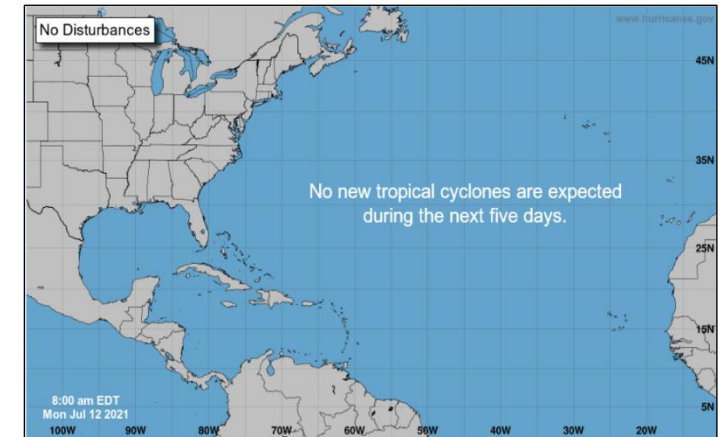
Central Pacific



Eastern Pacific



Atlantic



Disturbance 1 (as of 8:00 a.m. ET)

- Several hundred miles SSW of Acapulco, Mexico
- Moving W to WNW at 10-15 mph
- Tropical depression likely to form within a few days
- 48-hour formation chance: Low (30%)
- 5-day Formation chance: High (70%)

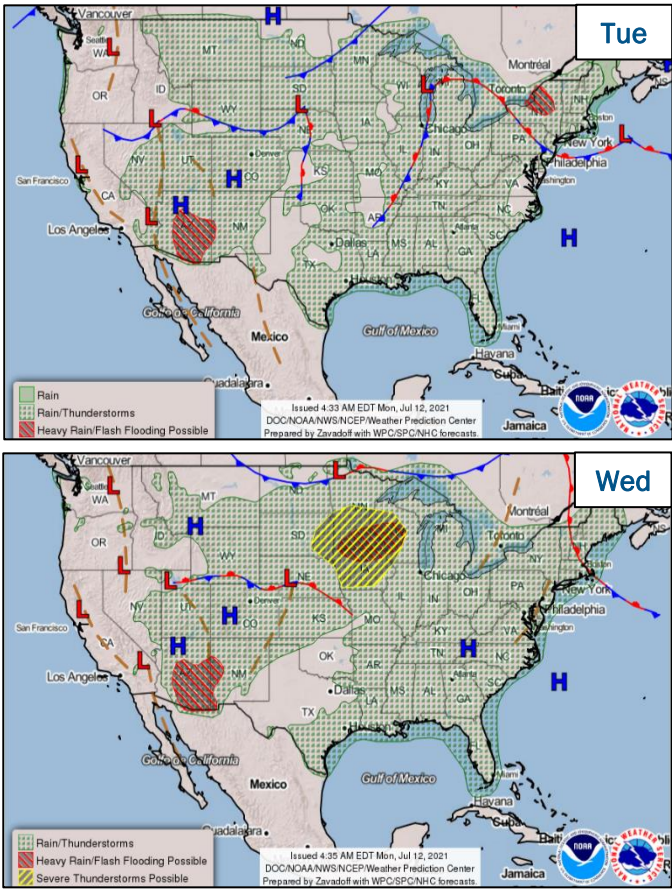
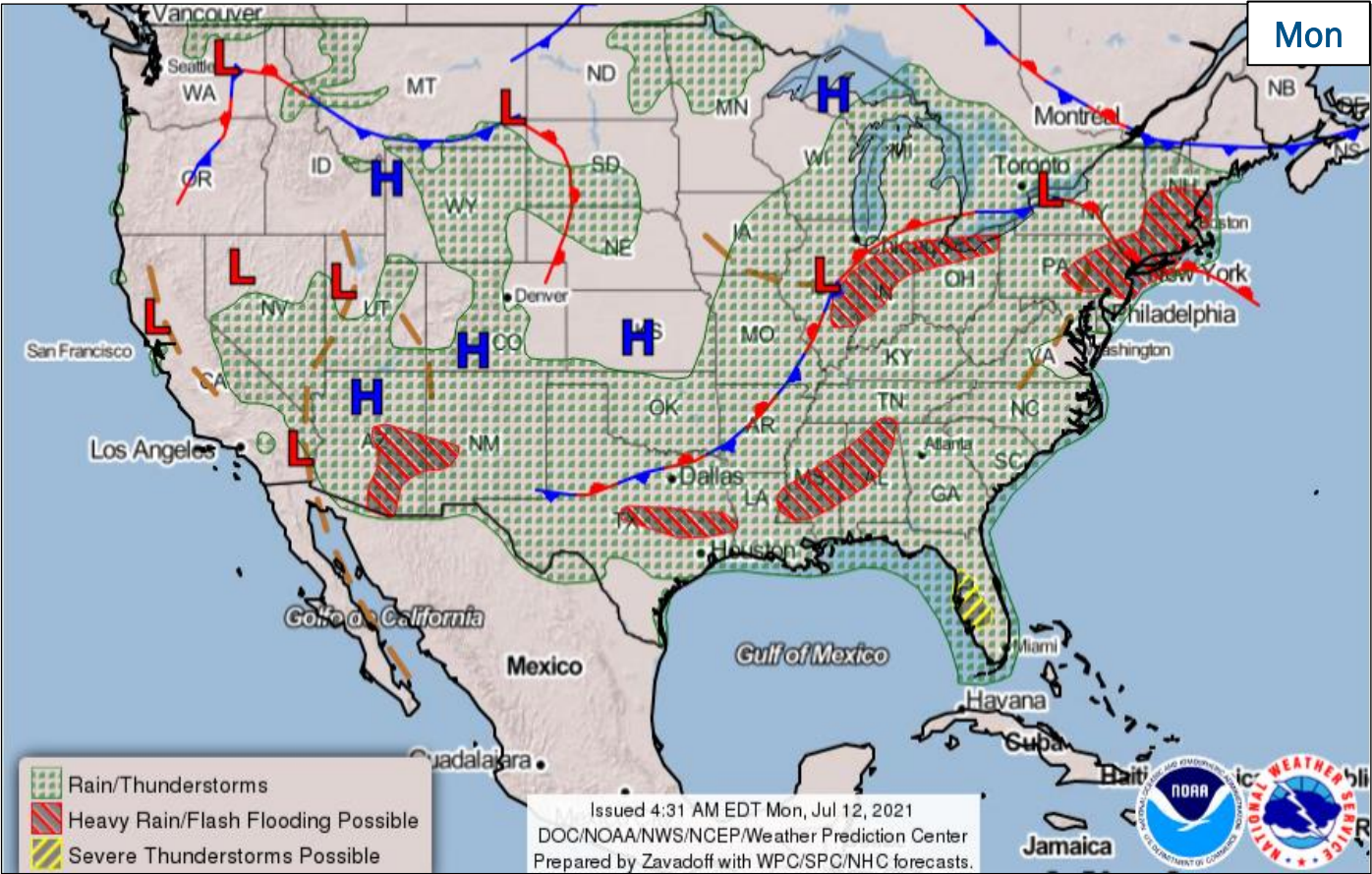
Disturbance 2 (as of 8:00 a.m. ET)

- Forecast to develop S of the Gulf of Tehuantepec later this week
- Moving W or WNW at 10-15 mph
- Tropical depression is likely to form by this weekend
- 48-hour formation chance: Low (near 0%)
- 5-day Formation chance: High (70%)



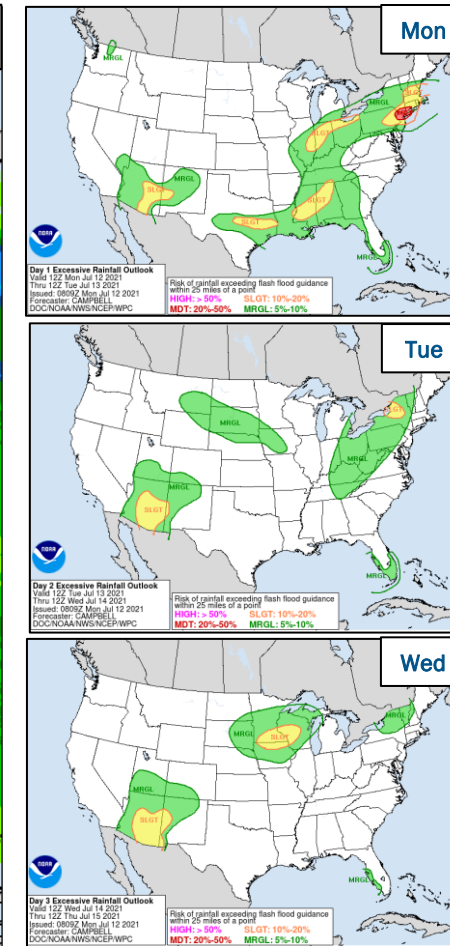
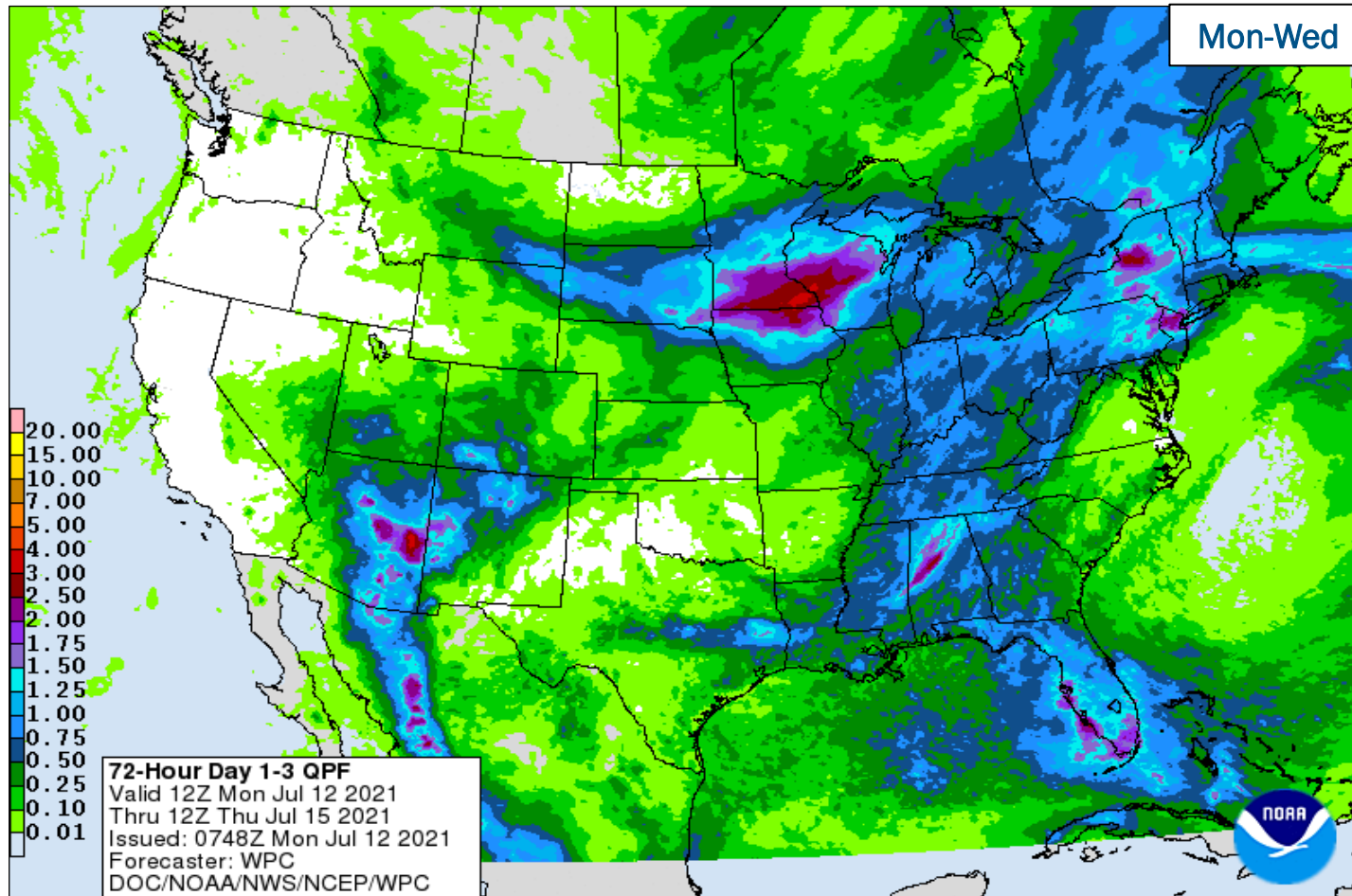
FEMA

National Weather Forecast



FEMA

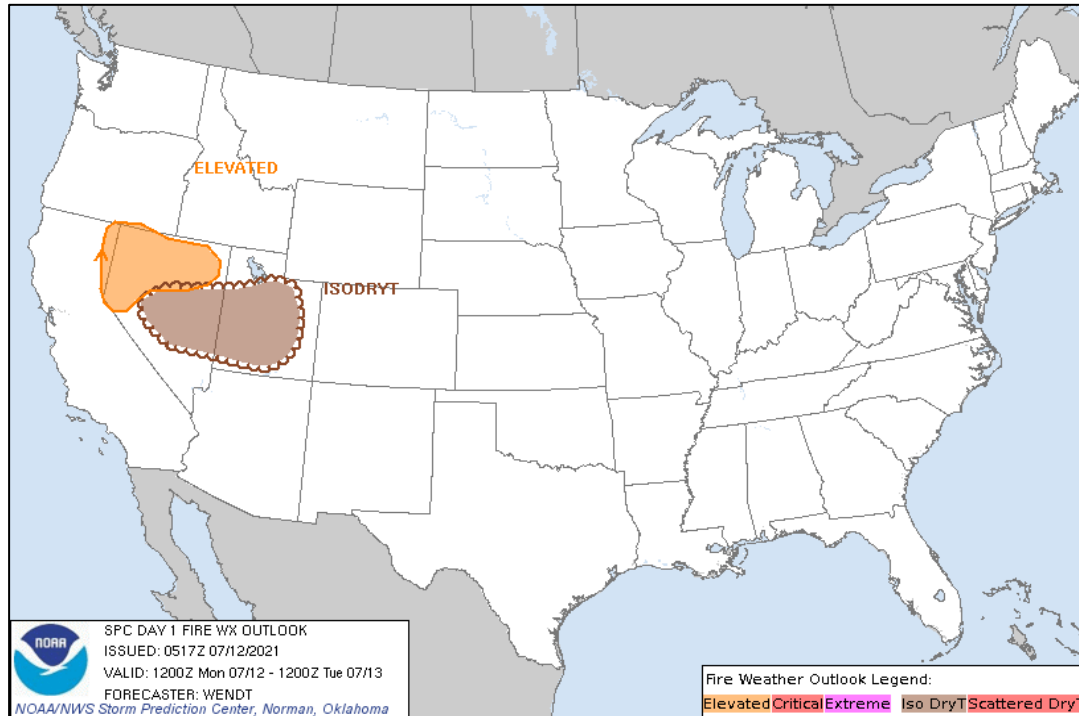
Precipitation & Excessive Rainfall



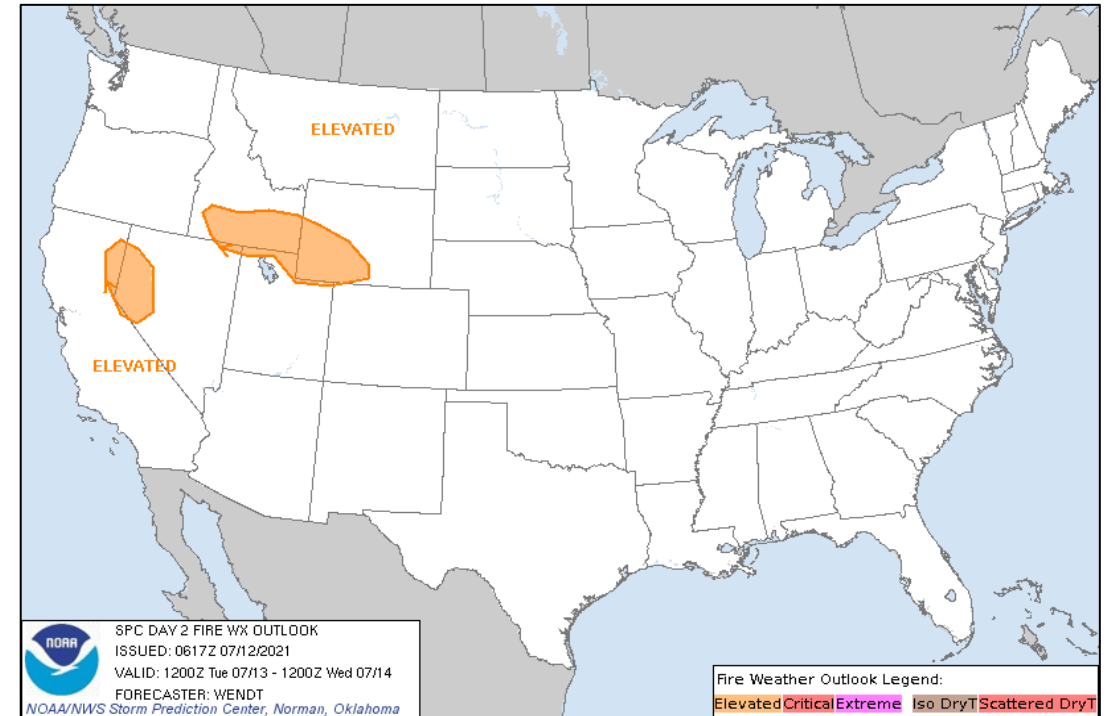
FEMA

National Watch Center

Fire Weather Outlook



Today



Tomorrow

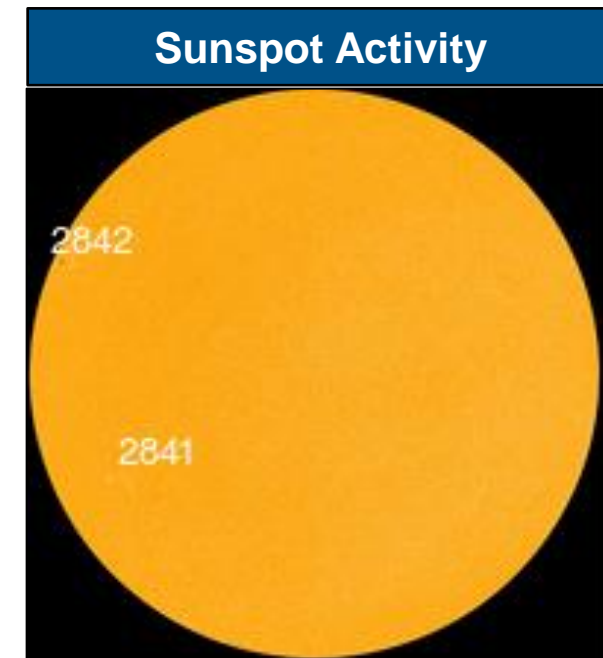
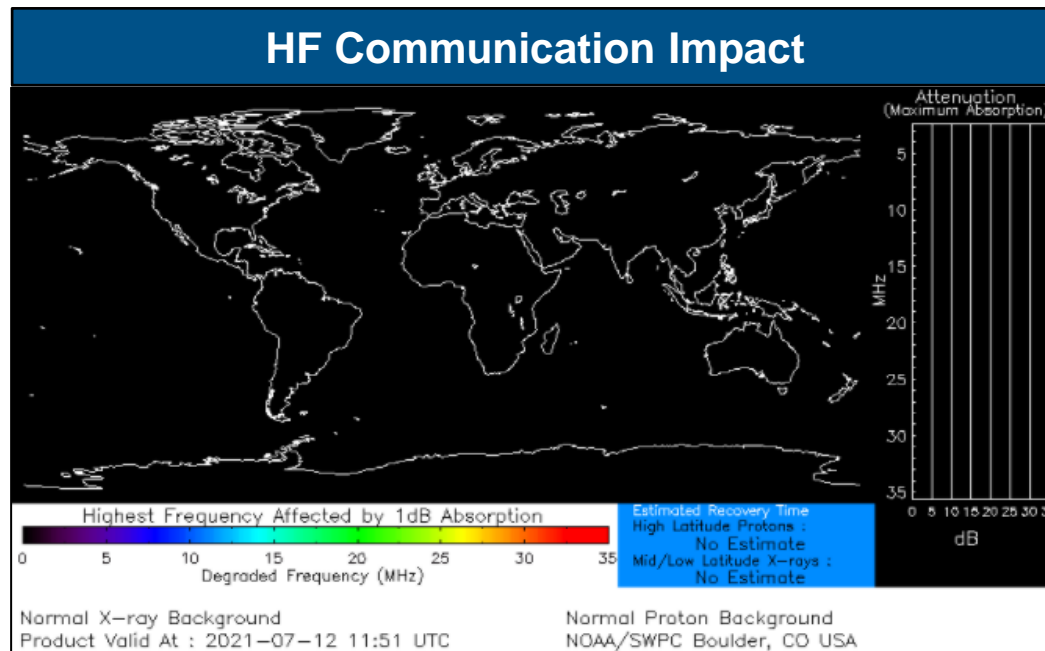


FEMA

National Watch Center

Space Weather Outlook

	Space Weather Activity	Geomagnetic Storms	Solar Radiation	Radio Blackouts
Past 24 Hours	None	None	None	None
Next 24 Hours	None	None	None	None
For further information on NOAA Space Weather Scales refer to: http://www.swpc.noaa.gov/noaa-scales-explanation For further information on Sunspot Activity refer to: https://www.swpc.noaa.gov/phenomena/sunspotssolar-cycle				



FEMA

National Watch Center

Joint Preliminary Damage Assessments

Region	State / Location	Event	IA	Number of Counties		Start – End
			PA	Requested	Complete	
V	MI	Severe Weather and Flooding Jun 25-26	IA	2	0	7/8 – TBD
			PA	3	0	7/8 – TBD
VII	MO	Severe Weather Jun 19-Jul 1	IA	0	0	N/A
			PA	20	6 (+1)	7/8 – TBD
VIII	MT	Severe Storms Jun 8-10	IA	0	0	N/A
			PA	5	0	6/21 – TBD
	ND	Severe Storms Jun 8-11	IA	0	0	N/A
			PA	9	0	7/6 – TBD



FEMA

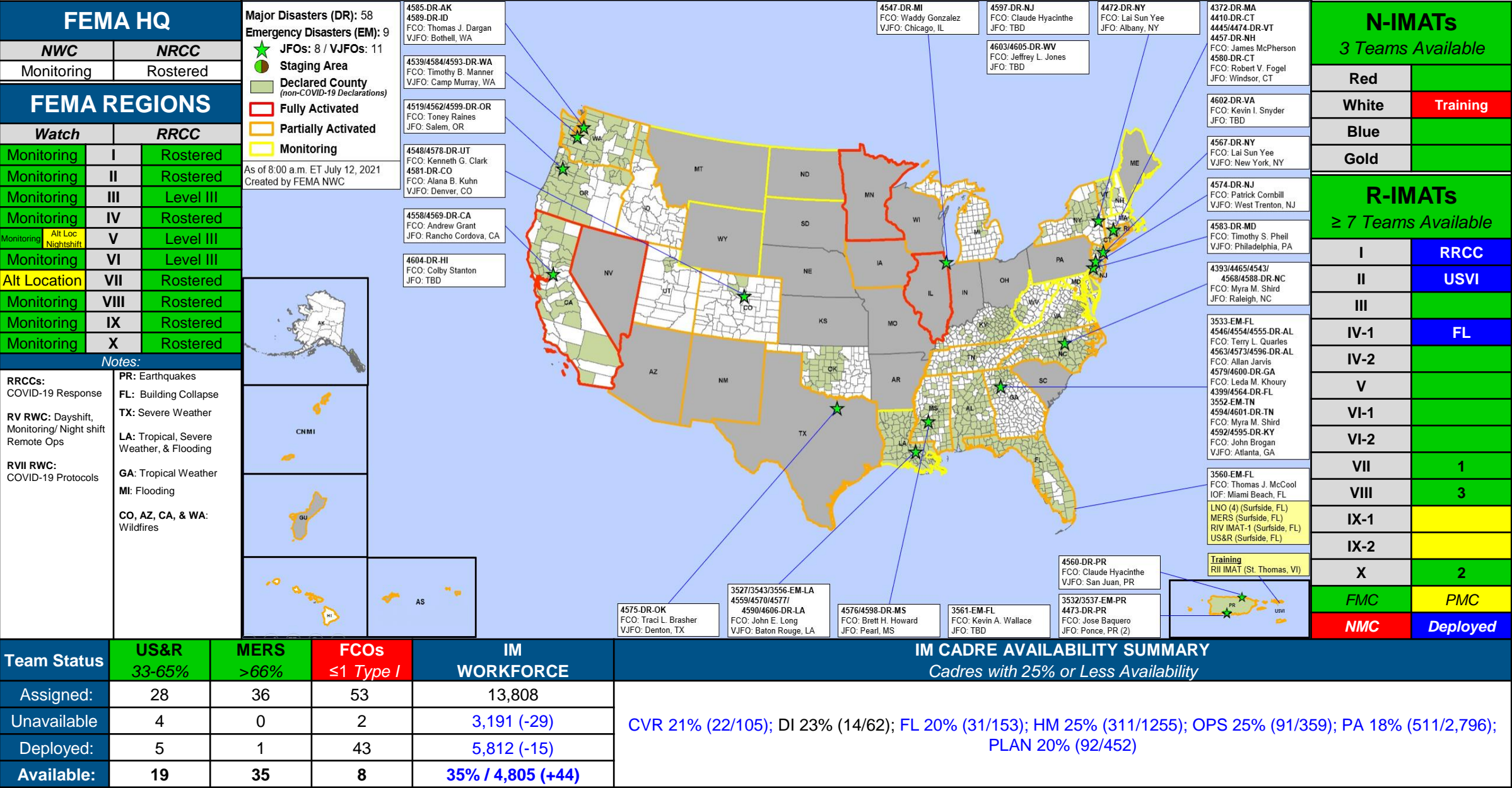
Declaration Requests in Process – 1

State / Tribe / Territory – Incident Description	Type	IA	PA	HM	Requested
WY – Severe Winter Storms (Appeal)	DR		X	X	7/2



FEMA

FEMA Common Operating Picture





FEMA

Helping people before, during, and after disasters.



Scan to subscribe to this briefing.