



# FEMA

## Daily Operations Briefing

Friday, August 21, 2020

8:30 a.m. ET

# National Current Operations and Monitoring



FEMA

## Significant Incidents or Threats:

- Wildland Fire Activity – CA & CO
- COVID-19

## Tropical Activity:

- Atlantic:
  - Tropical Depression Thirteen
  - Tropical Depression Fourteen
  - Disturbance 1: Medium (50%)
- Eastern Pacific:
  - Tropical Cyclone Genevieve
  - Disturbance 1: Medium (50%)
  - Disturbance 2: Low (20%)
- Central Pacific:
  - Disturbance 1: Low (10%)
  - Disturbance 2: Low (20%)
- Western Pacific: No activity affecting U.S. interests

## Declaration Activity:

- 3 FMAG's Approved – CA & WA
- Amendment 1 – FEMA-4557-DR-IA
- Request: Major Disaster – California and Iowa

# SCU Lightning Complex Fire – CA



FEMA

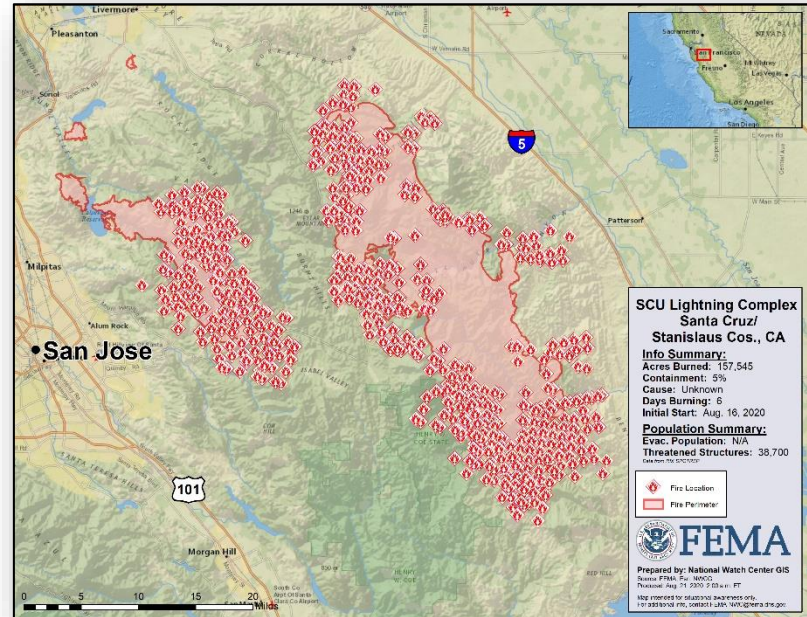
Fire Name (County, ST)	FMAG #	Acres Burned	Percent Contained	Evacuations	Structures (Homes / Other)			Fatalities / Injuries
					Threatened	Damaged	Destroyed	
SCU Lightning Complex Fire (Santa Clara and Sanislaus Counties, CA)	XXXX-FM-CA	157,475	5%	M: 17,150 V: 0	H: 38,700 O: 0	H: 0 O: 0	H: 0 O: 0	0 / 0

## Current Situation:

- The fire began Aug 16, burning in in multiple locations across the Diablo Mountain Range in California
- Mandatory evacuations are in progress
- Threatening: Communications, Transportation, Power and Gas Distribution Infrastructure, Schools, Vineyards, parks and watersheds

## Response:

- Region IX RWC and NWC continue to monitor
- CA EOC at Full Activation (Wildfires and COVID-19)
- FMAG approved Aug 20



# CZU Lightning Complex Fire – CA



FEMA

Fire Name (County, ST)	FMAG #	Acres Burned	Percent Contained	Evacuations	Structures (Homes / Other)			Fatalities / Injuries
					Threatened	Damaged	Destroyed	
CZU Lightning Complex Fire (Santa Cruz and San Mateo Counties, CA)	XXXX-FM-CA	48,000	0%	M: 48,429 V: 0	H: 20,952 O: 0	H: 0 O: 0	H: 20 O: 0	0 / 2

## Current Situation:

- The fire began Aug 16, burning on land in Santa Cruz and San Mateo Counties, CA (population 18,197)
- Threatening the communities of San Lorenzo Valley, China Creek, Boulder Creek, Bonny Doon, Selton, Zayante, and Scotts Valley (population 30K)
- Threats include: Communications, Transportation, Power and Gas Distribution Infrastructure, Schools, detention centers, and fire stations
- No shelters open

## Response:

- Region IX RWC and NWC continue to monitor
- CA EOC at Full Activation (Wildfires and COVID-19)
- FMAG approved Aug 20



# Palmer Fire— WA



FEMA

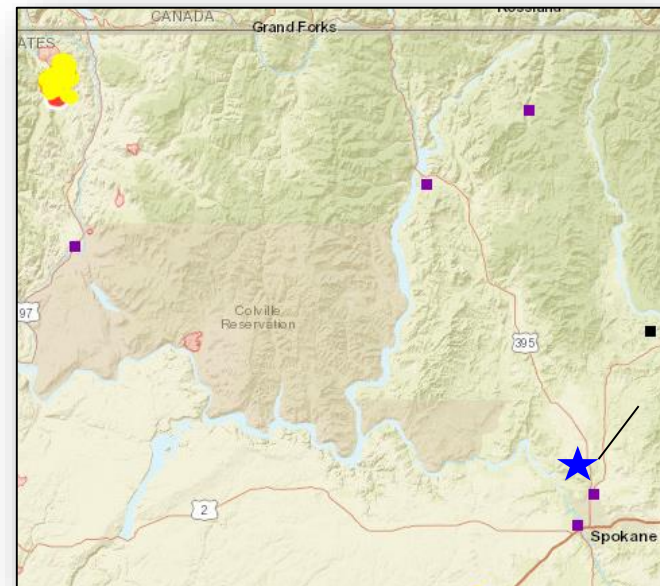
Fire Name (County, ST)	FMAG #	Acres Burned	Percent Contained	Evacuations	Structures (Homes / Other)			Fatalities / Injuries
					Threatened	Damaged	Destroyed	
Palmer Fire (Okanogan County, WA)	XXXX-FM-WA	13,000+	0%	M: V: 0	H: 375 O:	H: O:	H: 30 O:	0 / 0

## Current Situation:

- Fires began August 18; Burning on federal, state and private land
- Fire threatening homes in Loomis, Nighthawk and Oroville, WA
- Estimated 19,368 people threatened by this event
- 6 other large fires burning uncontrolled within the State
- Mandatory and voluntary evacuation notices have been issued
- The fire is threatening electrical utilities, agricultural resources, recreational area, historical sites, communications infrastructure, and the Enloe Dam

## Response:

- Region X RWC and NWC continue to monitor
- WA EOC at Full Activation (Wildfires and COVID-19)
- FMAG approved August 20



# Wildfire Summary



FEMA

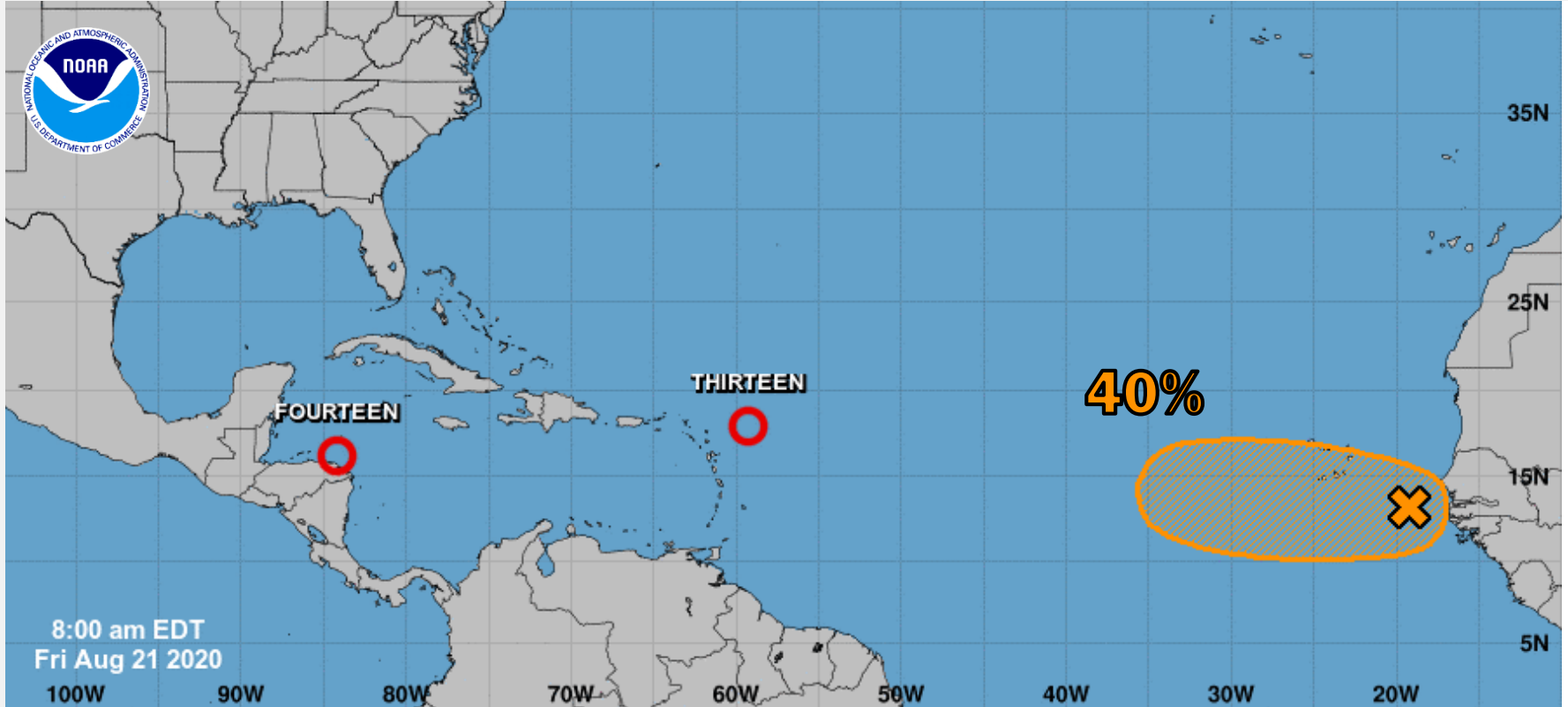
Fire Name (County, ST)	FMAG #	Acres Burned	Percent Contained	Evacuations	Structures (Homes / Other)			Fatalities / Injuries
					Threatened	Damaged	Destroyed	
Loyalton Fire (Washoe County, NV; Sierra, Plumas & Lassen counties, CA) (FINAL)	5328-FM-NV	46,582 (+196)	60% (+25)	M: 50	H: 200	H: 0	H: 5	0 / 2
				V: 0	O: 0	O: 0	O: 6	
River Fire (Monterey County, CA)	5329-FM-CA	33,974 (+321)	9% (+2)	M: 9,917 (+842)	H: 3,005 (+255)	H: 2	H: 8 (+3)	0 / 0
				V: 0	O: 0	O: 0	O: 2 (+1)	
LNU Lightning Complex (Napa County, CA)	5331-FM-CA	215,000 (+84,000)	0%	M: 70,600	H: 30,000	H: 105 (+55)	H: 475 (+300)	4 (+4) / 4 (+4)
				V: 0	O: 500	O: 20	O: 5	
Jones Fire (Nevada County, CA)	5332-FM-CA	705	15% (+5%)	M: 4,100	H: 0	H: 0	H: 6 (+1)	0 / 0
				V: 0	O: 0	O: 1	O: 15 (+15)	
Carmel Fire (Monterey County, CA)	5333-FM-CA	4,428 (+143)	0%	M: 1,525 (+499)	H: 462 (+151)	H: 1 (+1)	H: 23 (+20)	0 / 0
				V: 680	O: 0	O: 1 (+1)	O: 5 (+5)	
Grizzly Creek Fire (Garfield & Eagle County, CO)	5334-FM-CO	29,732 (+1,702)	11% (+7)	M: 231	H: 4,258	H: 0	H: 0	0 / 7 (+5)
				V: 0	O: 8,332 (+7,279)	O: 0	O: 3	
Pine Gulch Fire (Garfield & Mesa County, CO)	5335-FM-CO	122,550 (-3,002)	17% (+3)	M: 37	H: 50	H: 0	H: 0	0 / 0
				V: 0	O: 5	O: 0	O: 1	

(Evacuations: M = Mandatory / V = Voluntary

Structures: H = Homes and Mixed Commercial/Residential / O = Non-residential Commercial/Other Minor Structures)

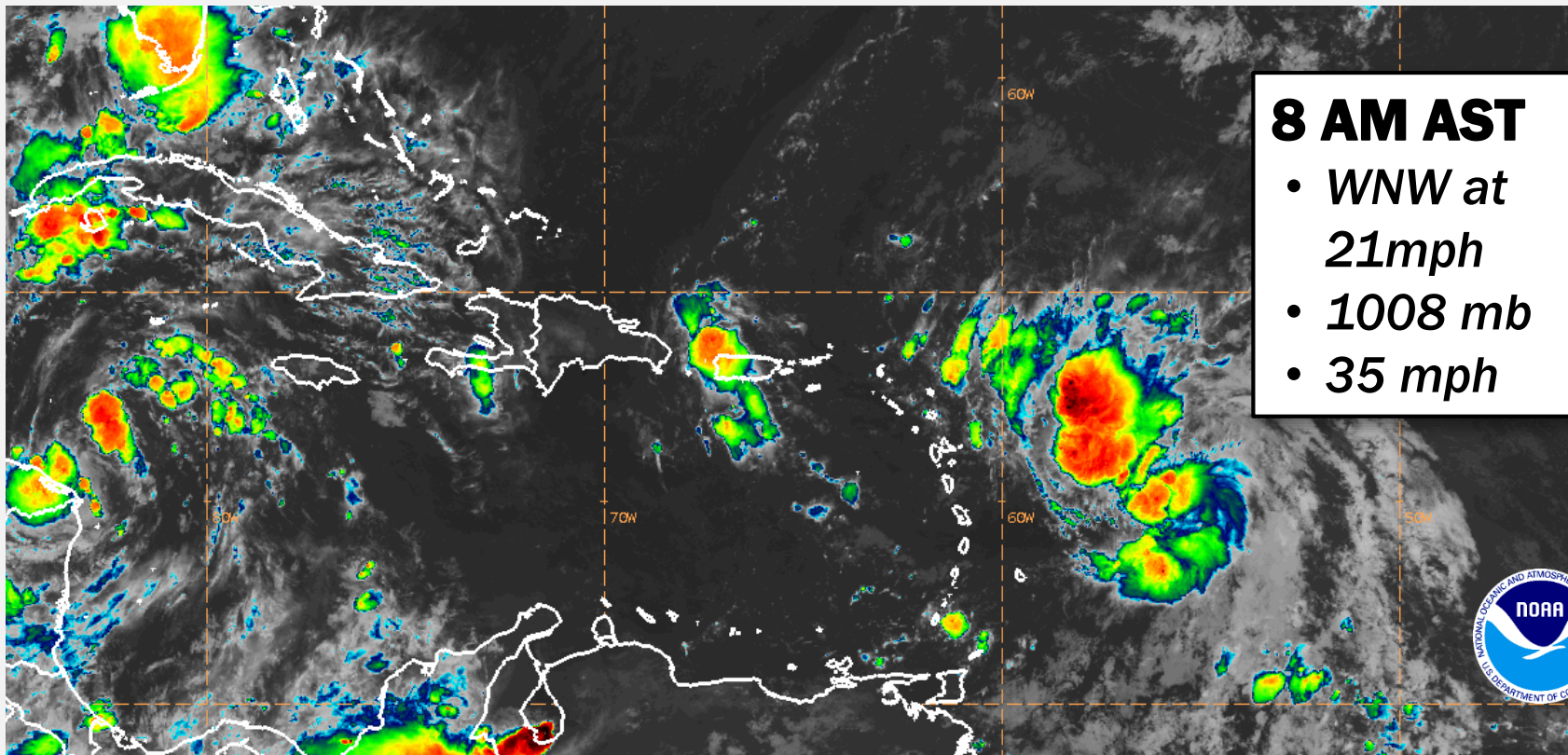
# Atlantic Overview

## TROPICAL OUTLOOK



# Tropical Depression 13

## SATELLITE LOOP



**8 AM AST**

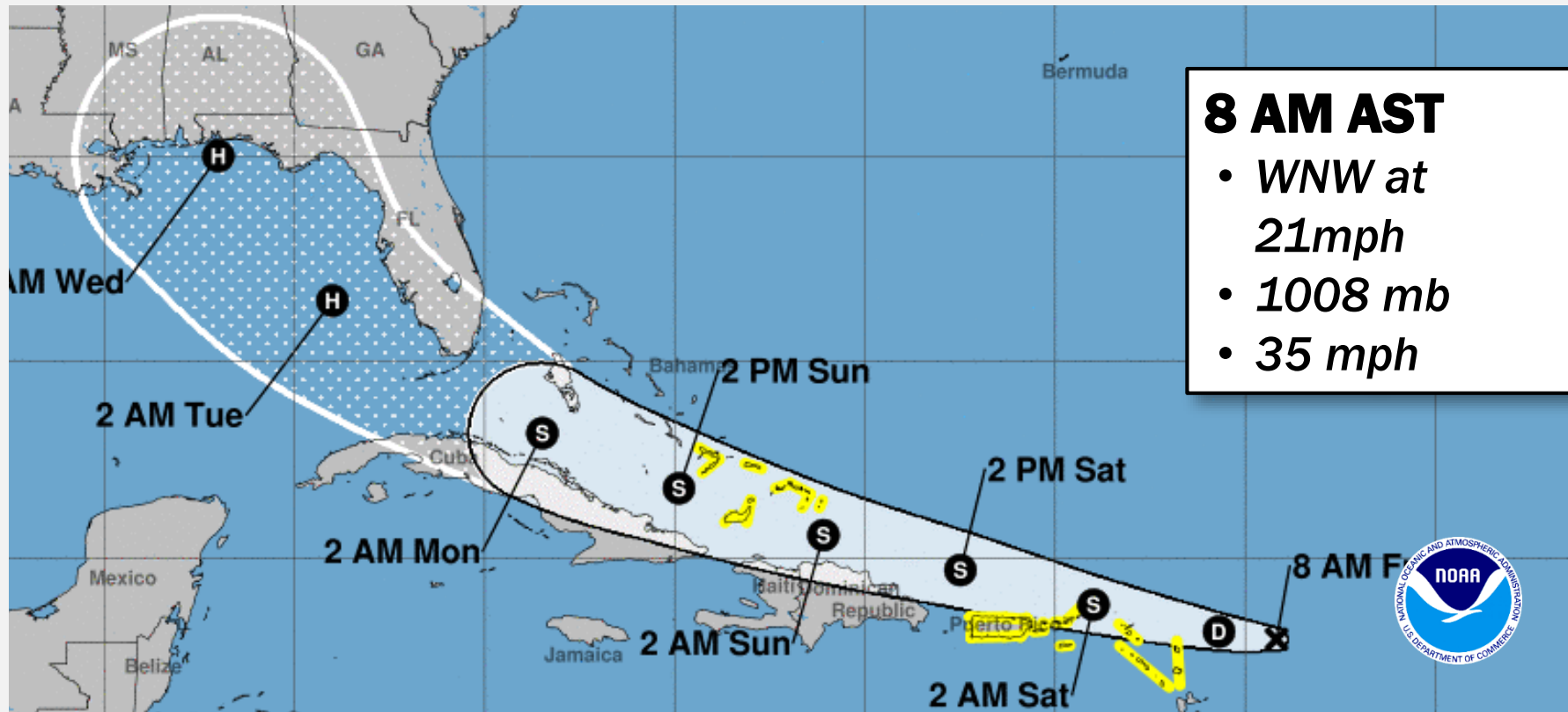
- *WNW at 21mph*
- *1008 mb*
- *35 mph*





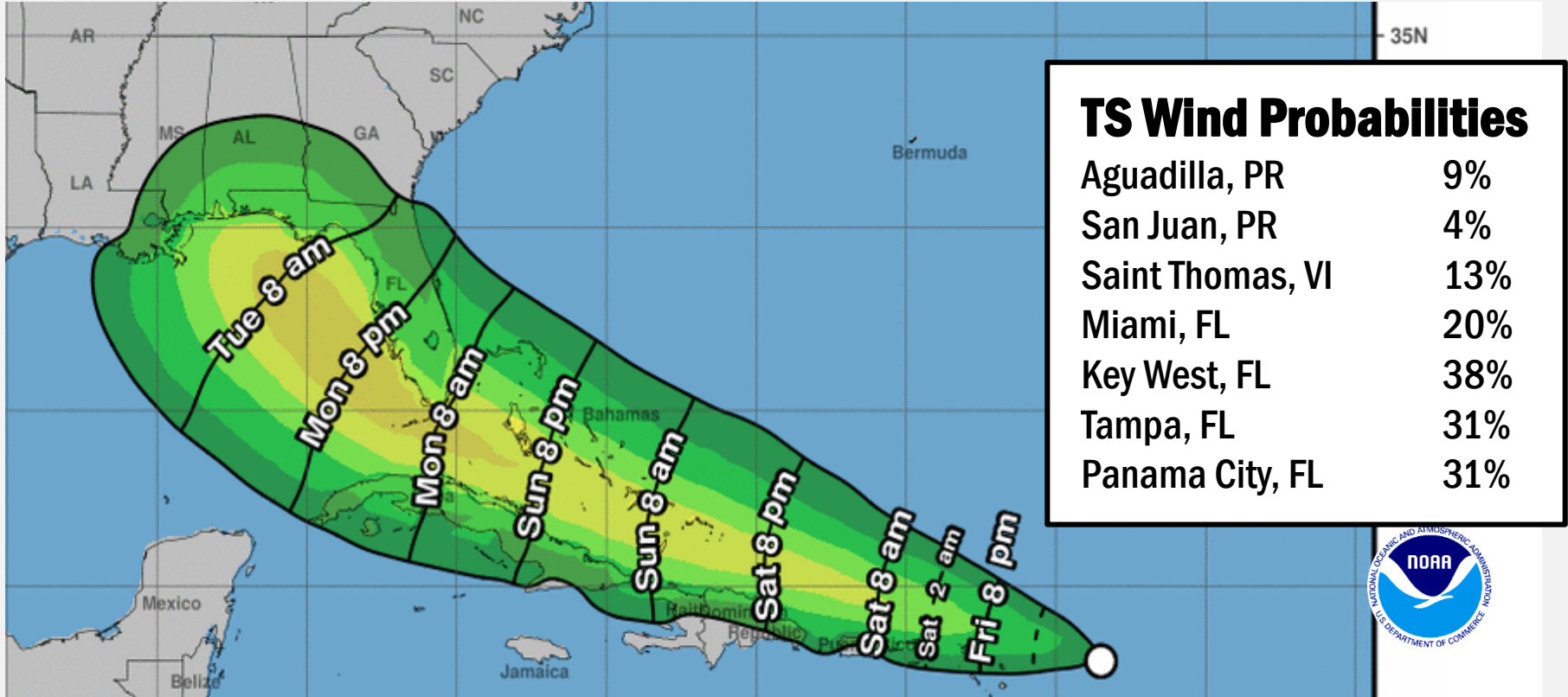
# Tropical Depression 13

## FORECAST TRACK



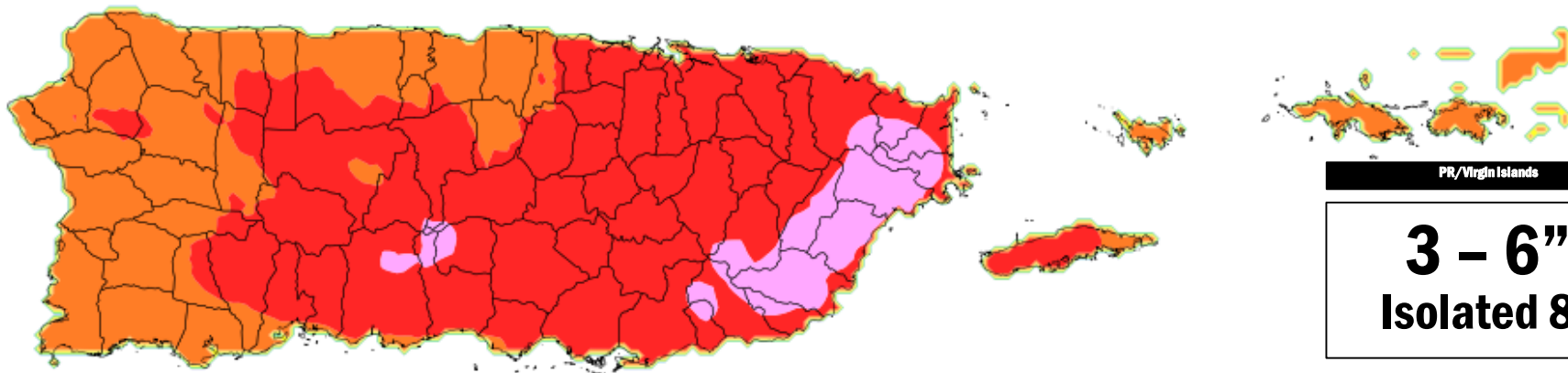
# Tropical Depression 13

## MOST LIKELY ARRIVAL OF TS WINDS



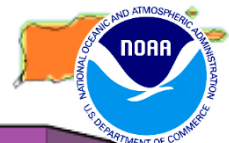
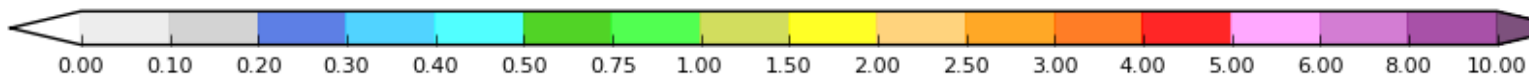
# Tropical Depression 13

## 3 DAY RAINFALL



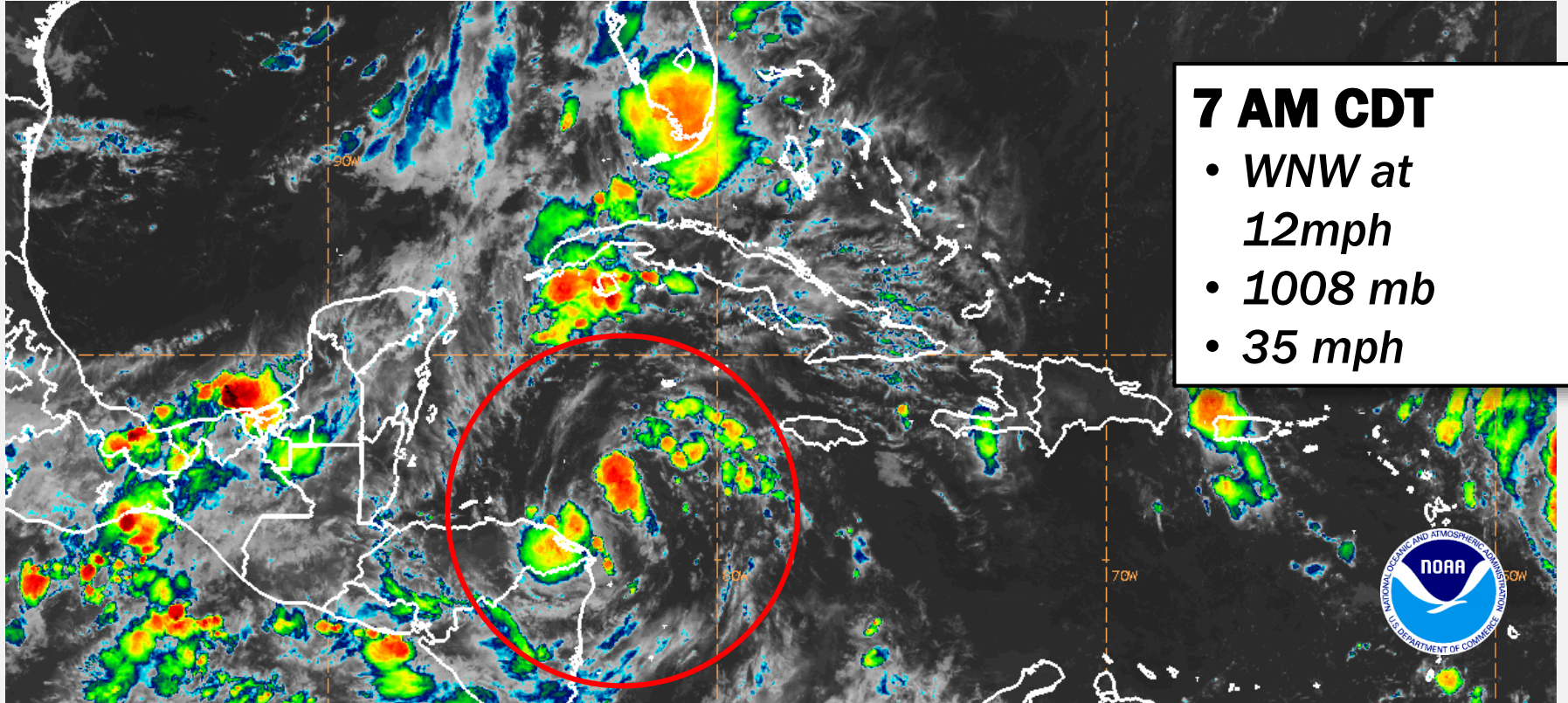
PR/Virgin Islands

**3 - 6"**  
**Isolated 8"**



# Tropical Depression 14

## SATELLITE LOOP



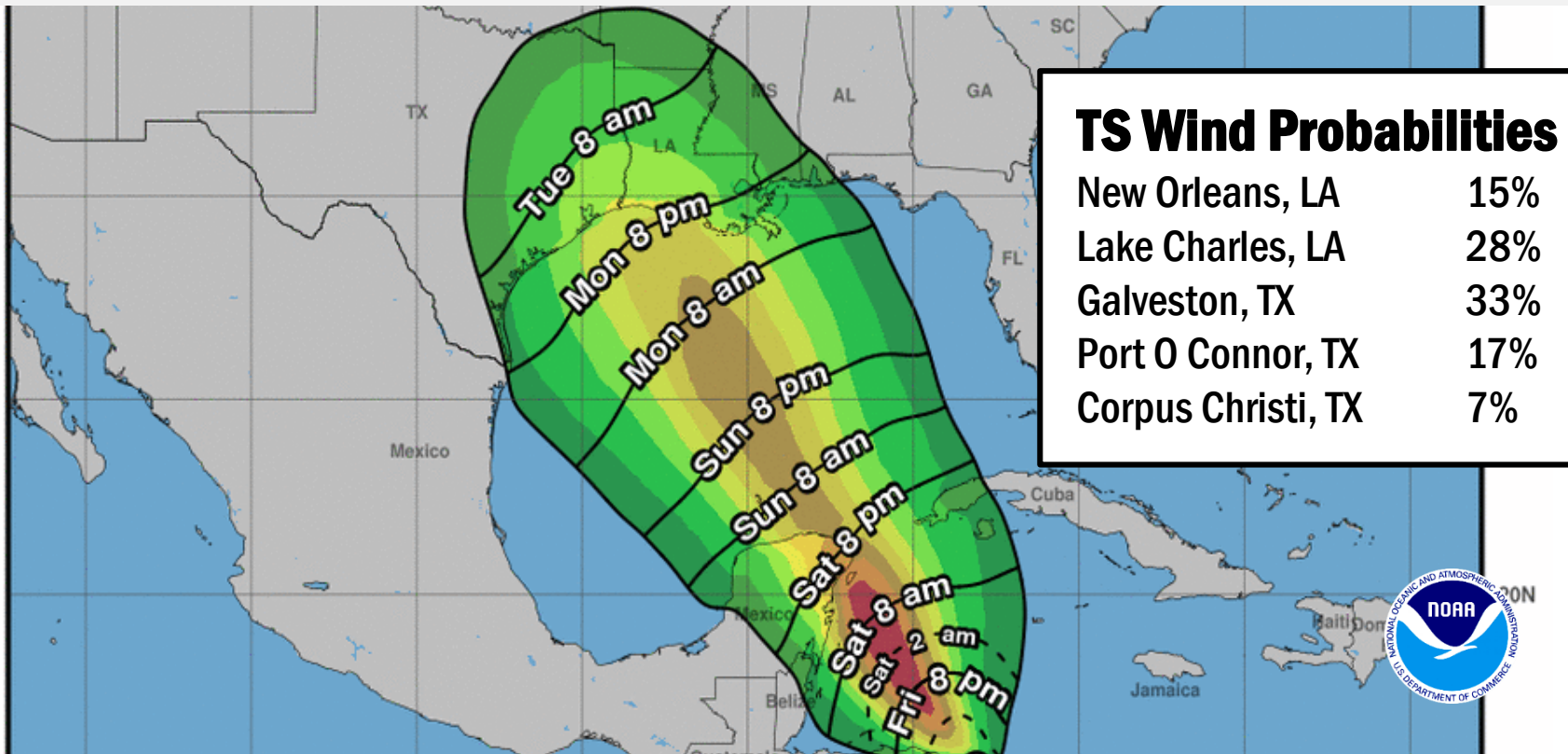
# Tropical Depression 14

## FORECAST TRACK



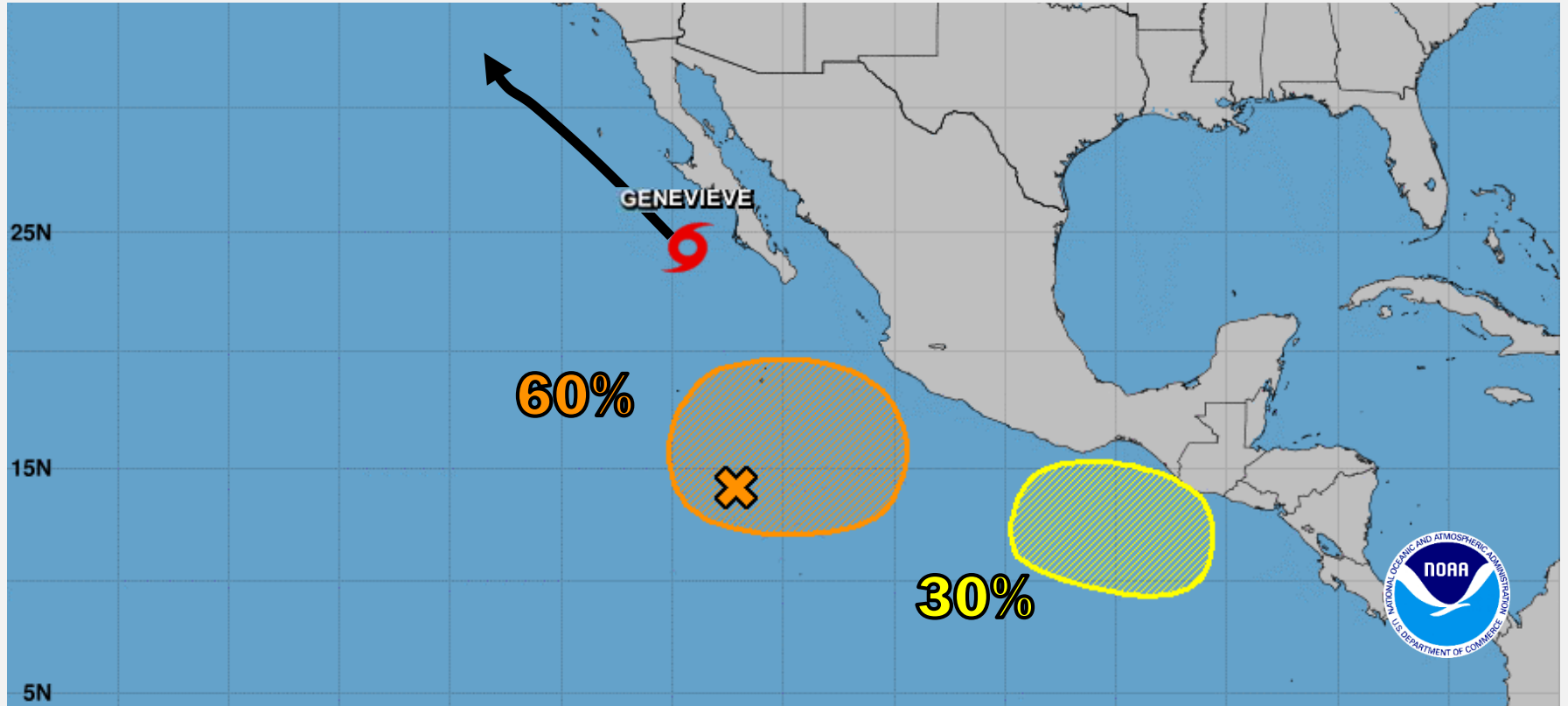
# Tropical Depression 14

## MOST LIKELY ARRIVAL OF TS WINDS



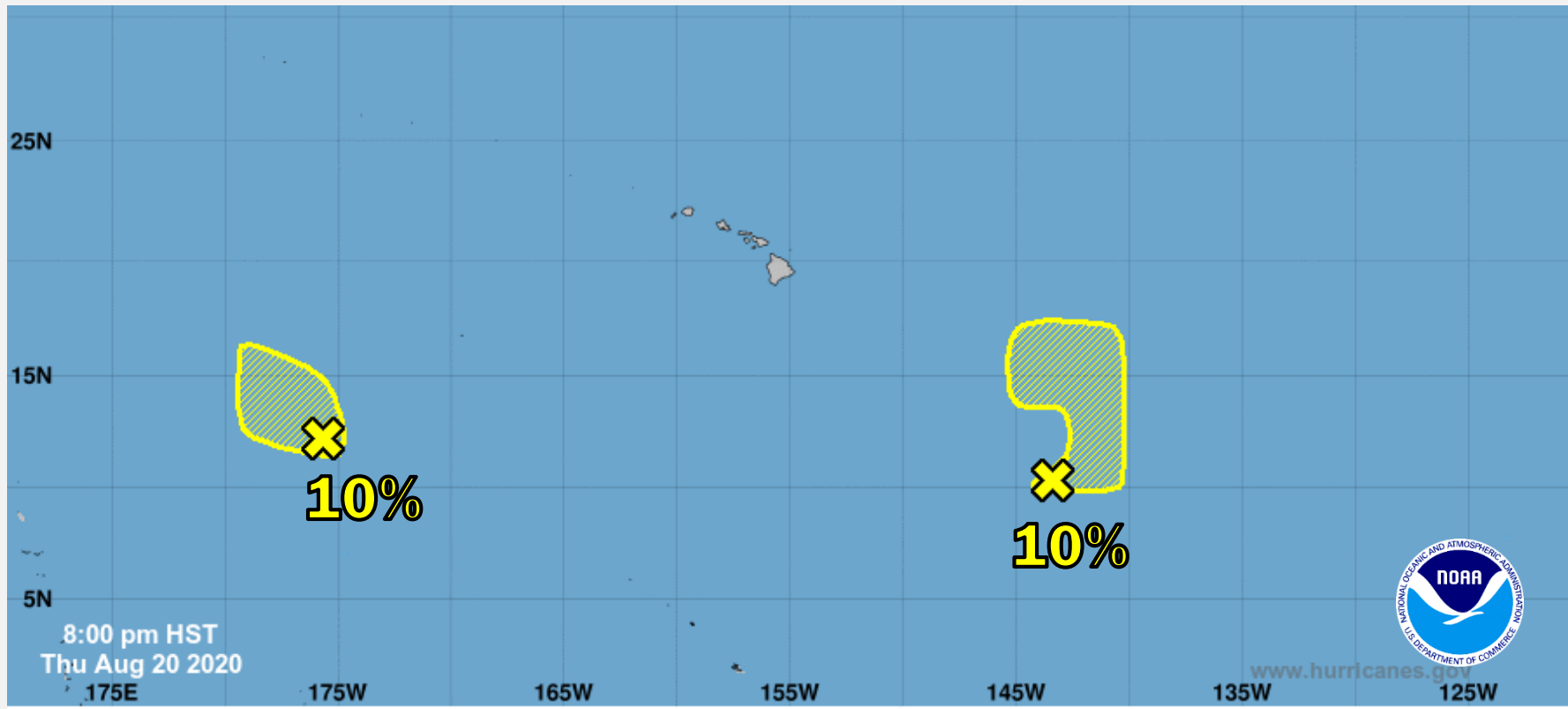
# East Pacific Overview

## TROPICAL OUTLOOK



# Central Pacific Overview

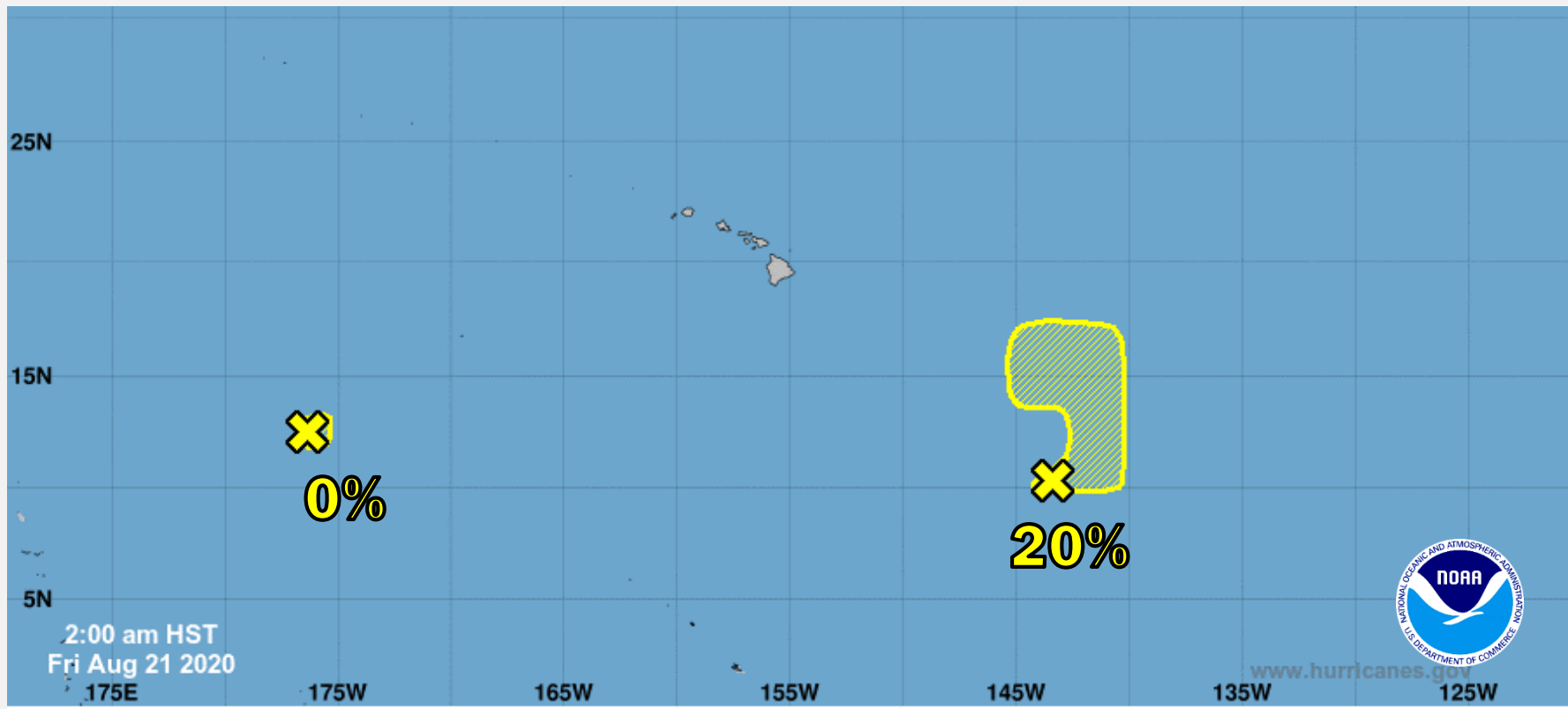
## TROPICAL OUTLOOK





# Central Pacific Overview

## TROPICAL OUTLOOK



# Tropical Depression Thirteen & Fourteen – Preparations/Response

## Situation:

**TD 13:** Located 305 miles E of the Northern Leeward Islands moving WNW at 21 mph toward Puerto Rico and USVI. Gradual strengthening is forecast. TD Thirteen is forecast to impact PR/USVI with 3-6 inches of rain through Sunday.

**TD 14:** Located 30 miles NNE of the Cabo Gracias a Dios moving WNW at 12 mph. On the forecast track, the system will move near the coasts of northern Nicaragua and northeastern Honduras and approach the east coast of the Yucatan Peninsula tomorrow.

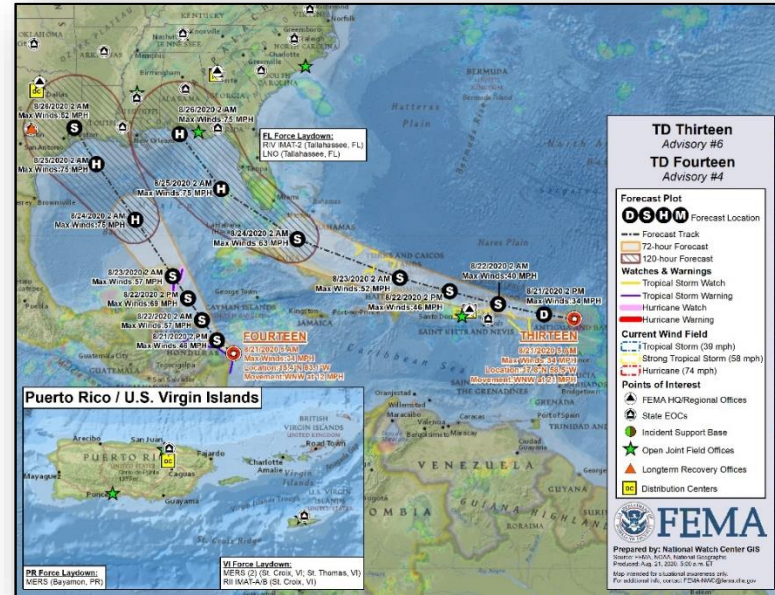
## Preparations:

### FEMA Region II:

- RRCC at Level II; with select ESFs, MERS, and air operations
- Region II IMAT deployed to USVI
- USVI:
  - USVI EOC at Partial Activation (COVID-19); LNO on standby
  - Region X DCE available to deploy to USVI if needed
- Puerto Rico:
  - PR EOC at Partial Activation (Earthquake & COVID-19)
  - Command and General Staff Structure established
  - DCE deploying virtually to PR

### FEMA Region IV

- Region IV RRCC is rostered; **IMAT-2 and LNO deployed to FL EOC**



### FEMA HQ:

- NRCC remains activated to Level 1 (COVID-19)
- NWC at Enhanced Watch (DNC/RNC)
- MERS deploying to USVI and PR
- Logistics personnel are deployed to USVI and PR
- IA and PA Cadres are on alert
- US&R Equipment Cache pre-positioned in PR

# COVID-19 Update



**Situation:** Upward trajectory in COVID-19 case count continues across 4 (-1) states, with 7 (+1) states in a plateau status, and 45 states on a downward trajectory.  
22,969 (-329) Federal employees deployed / activated; 1,963 FEMA employees deployed.

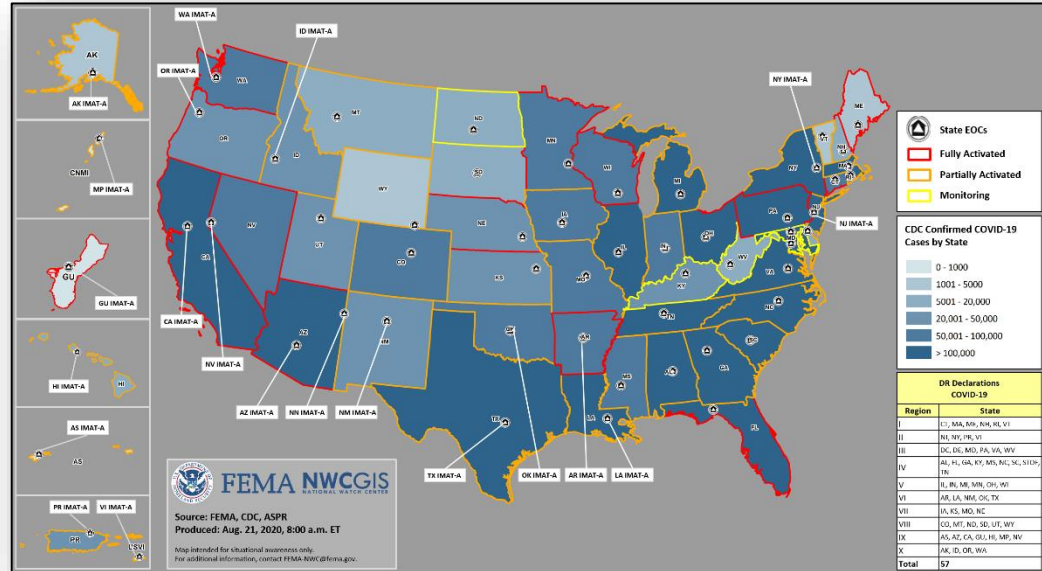
Nationwide Testing: 75,679,842 (+849,378) cumulative as of Aug 20

COVID-19 positive cases continue to increase globally (CDC COVID-19 update as of Aug 20)

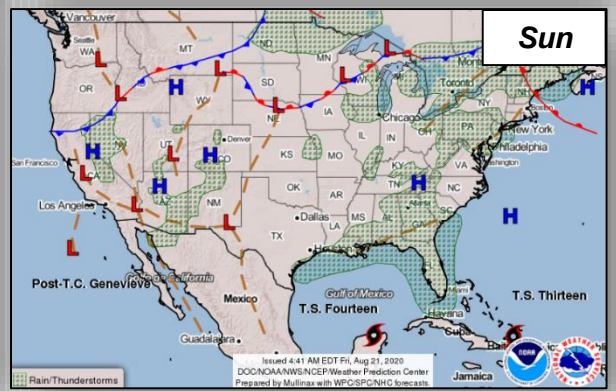
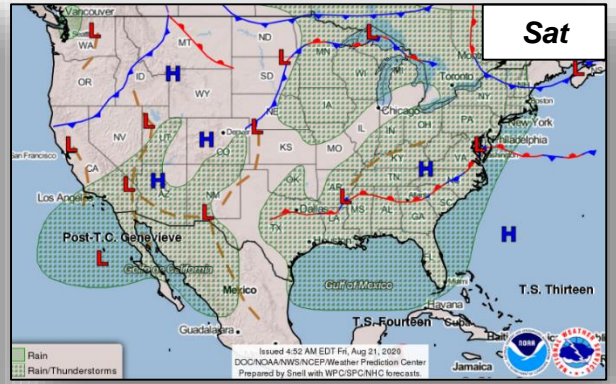
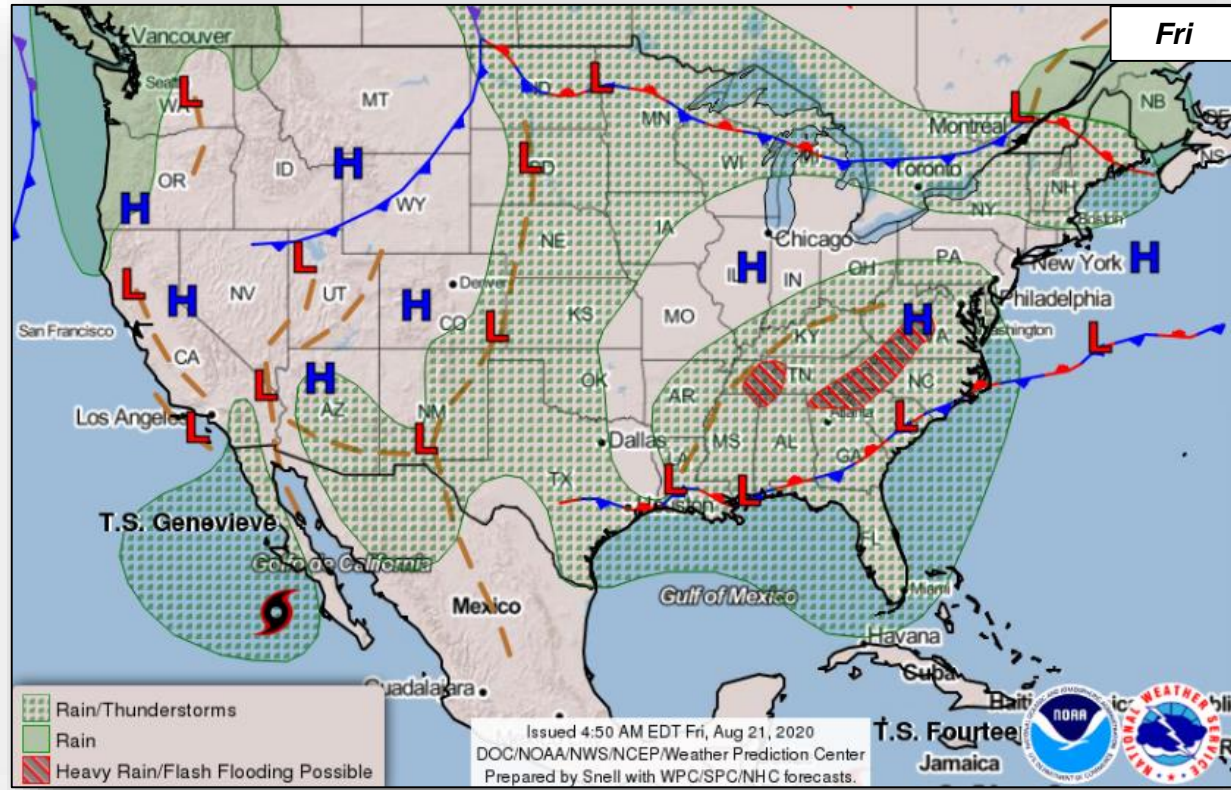
- Confirmed Cases of COVID-19
  - United States: 5,506,929 (+46,500)
  - Worldwide: 21,989,366
- Deaths caused by COVID-19
  - United States: 172,416 (+1,404)
  - Worldwide: 775,893

## Response:

- NRCC at Level I
- Region II RRCC at Level II
- Regions I, III, V, VI, & X RRCCs at Level III
- Regions IV, VII, VIII, & IX RRCCs are rostered
- Regions VII, VIII & IX COVID-19 response being worked from the Virtual JFO
- NWC, all RWCs, and MOCs are monitoring



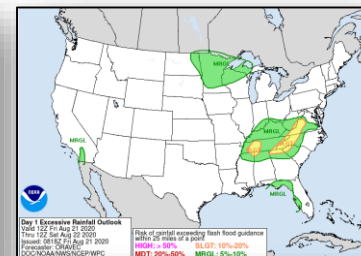
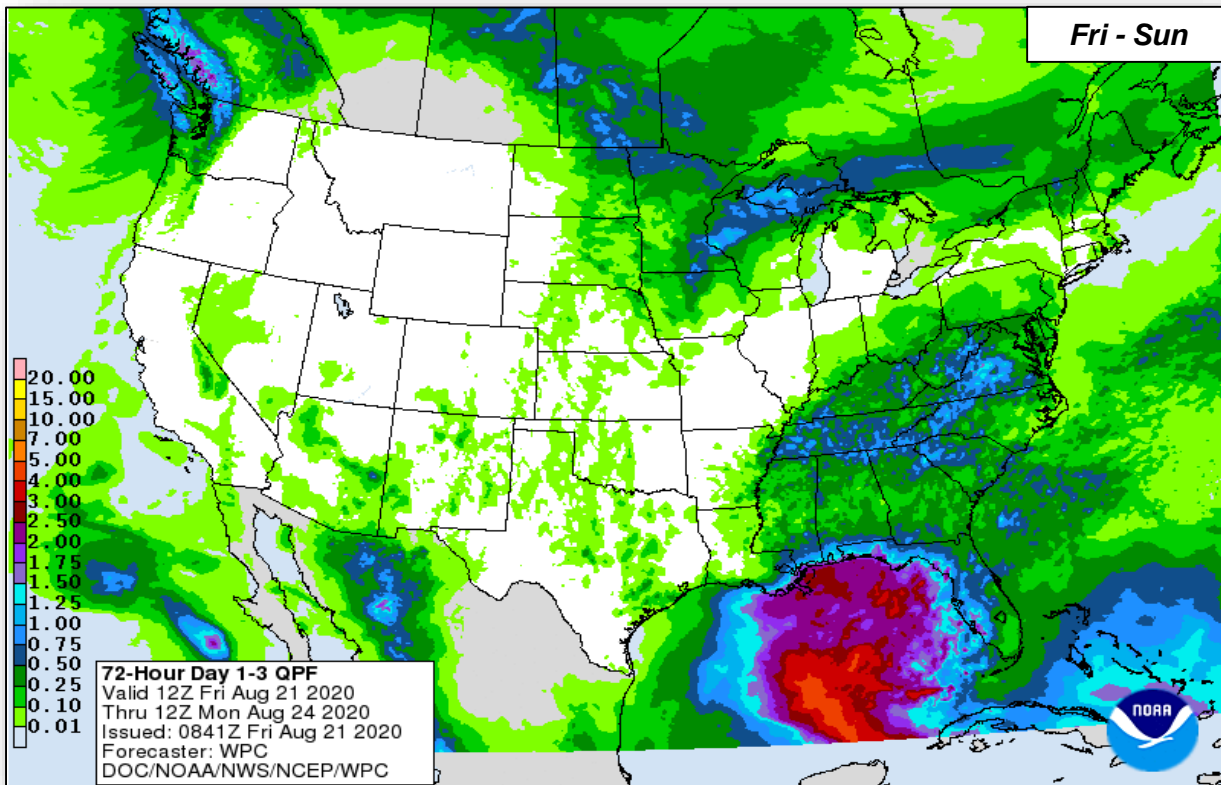
# National Weather Forecast



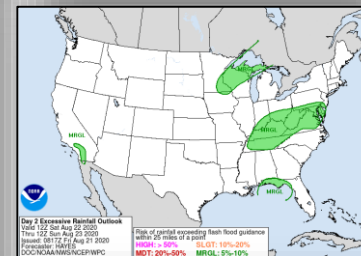
# Precipitation & Excessive Rainfall



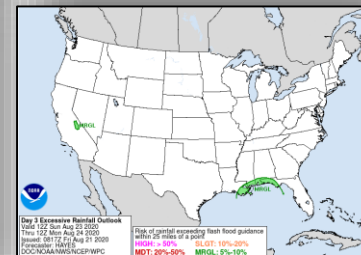
FEMA



*Fri*



*Sat*

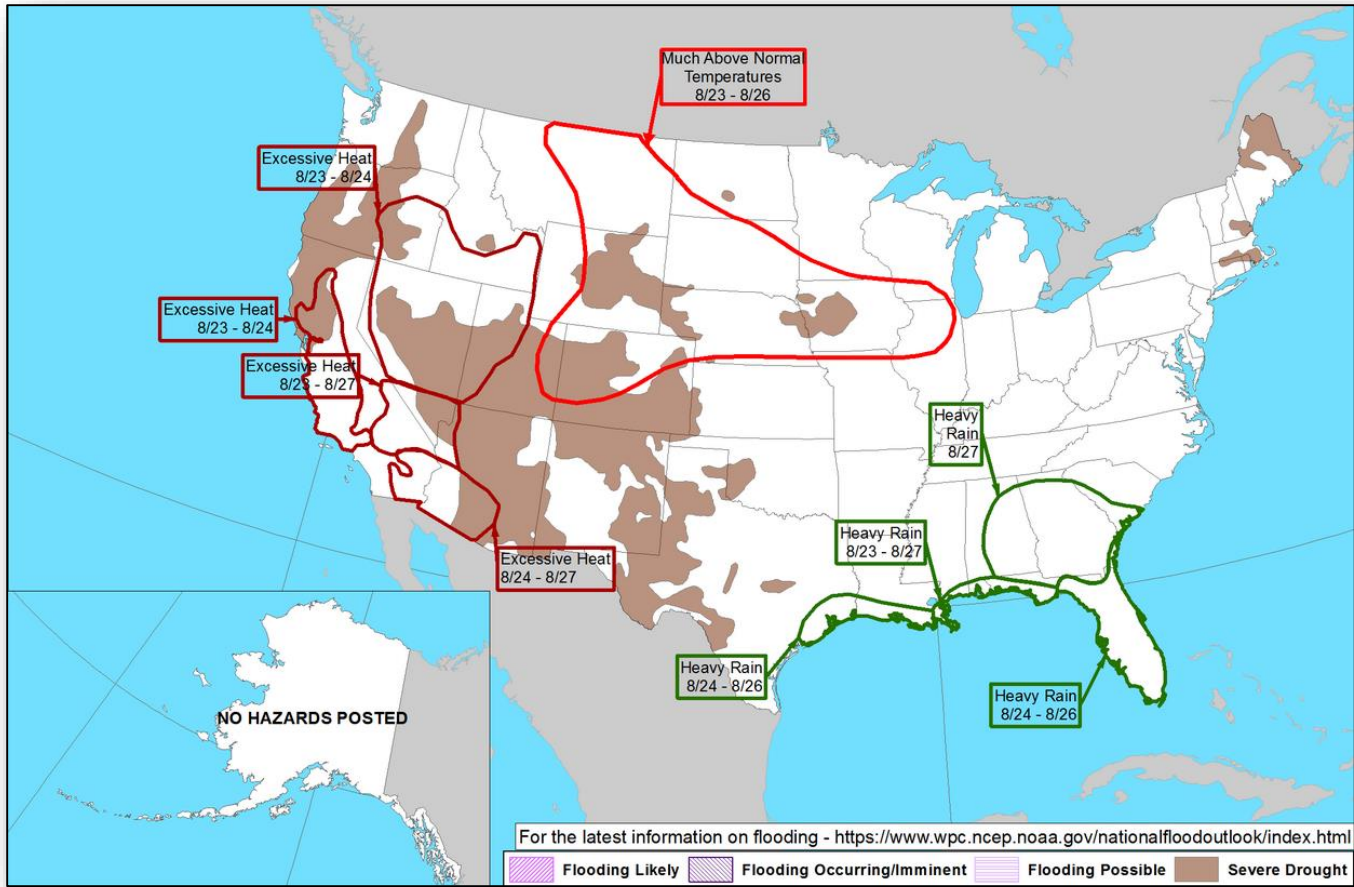


*Sun*

# Hazards Outlook – Aug 23-27



FEMA



# Joint Preliminary Damage Assessments



FEMA

Region	State / Location	Event	IA/PA	Number of Counties		Start – End
				Requested	Complete	
III	DE	T.S Isaias and Tornadoic Thunderstorms, Straight Line Winds Aug 4 - 7	IA	2	0	8/21 - TBD
			PA	3	0	8/21 - TBD
III	MD	T.S Isaias Aug 4 - 5	IA	0	0	N/A
			PA	5	0	TBD
IV	NC	Hurricane Isaias Aug 3	IA	0	0	N/A
			PA	14	0	8/18 – TBD
VI	TX	Hurricane Hanna Jul 25 and continuing	IA	6	6 (+6)	7/29 – 8/20
			PA	6	0	7/29 – TBD
VII	IA	Severe Storms and Straight-Line Winds Aug 10 and continuing	IA	27	0	8/15 – TBD
			PA	16	0	8/15 – TBD

# Declaration Request



**Declaration:** Major Disaster – Sac & Fox Tribe of the Mississippi in Iowa (Meskwaki Nation)

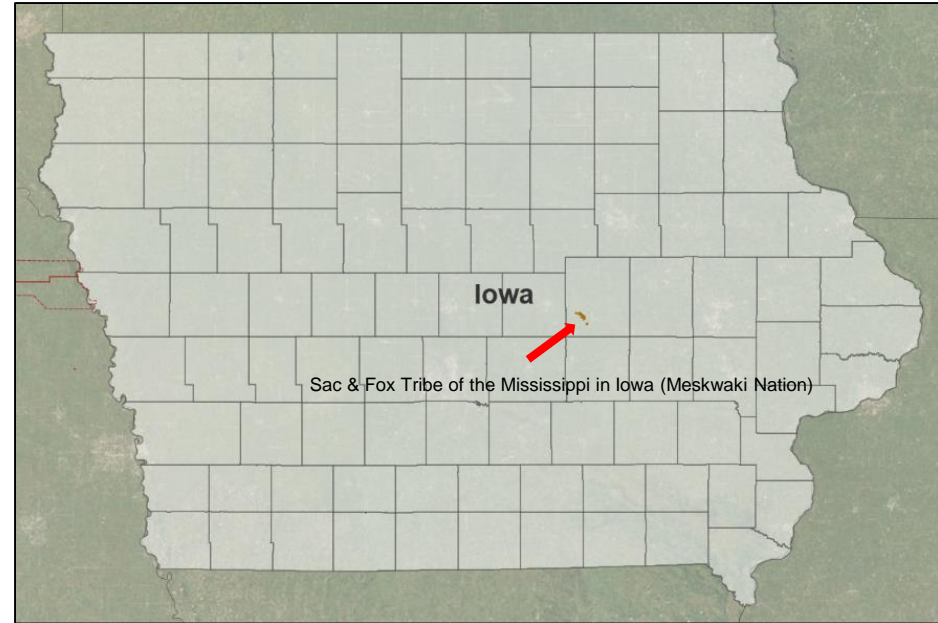
**Requested:** Aug 14

**Incident:** Severe Weather

**Incident Period:** Aug 10

**Includes:**

- **IA and PA:** Entire Tribe
- **Hazard Mitigation:** Entire Tribe



■ **IA & PA**



# Declaration Request



**Declaration:** Major Disaster – California  
**Requested:** Aug 21

**Incident:** Wildfires

**Incident Period:** Aug 14 and continuing

**Includes:**

- **IA and PA:** 9 counties
- **Hazard Mitigation:** Statewide



■ IA & PA

# Declaration Requests in Process – 4



FEMA

State / Tribe / Territory – Incident Description	Type	IA	PA	HM	Requested
Poarch Band of Creek Indians – COVID-19 Pandemic	DR	X	X		May 15
LA – Severe Storm and Tornadoes	DR		X	X	Jul 10
MN – Fire due to Civil Unrest (Appeal) <b>DENIED (18 AUG)</b>	DR		X	X	Aug 7
<b>Sac &amp; Fox Tribe of the Mississippi of Iowa</b> – Severe Weather	DR	X	X	X	Aug 14
CA – Wildfires	DR	X	X	X	Aug 20

# Declaration Amendments



FEMA

Declaration	Number	Issued	Action
FEMA-4557-DR-IA	1	Aug 20	Adds Linn County for IA (already designated for PA)

# FEMA Common Operating Picture



FEMA

FEMA HQ	
<b>NWC</b>	<b>NRCC</b>
Enhanced	Level I

FEMA REGIONS		
WATCH	RRCC	
Monitoring	I	Level III
Enhanced	II	Level II
Monitoring	III	Level III
Monitoring	IV	Rostered
Monitoring	V	Level III
Monitoring	VI	Level III
Alt. Location	VII	Rostered
Monitoring	VIII	Rostered
Monitoring	IX	Rostered
Monitoring	X	Level III

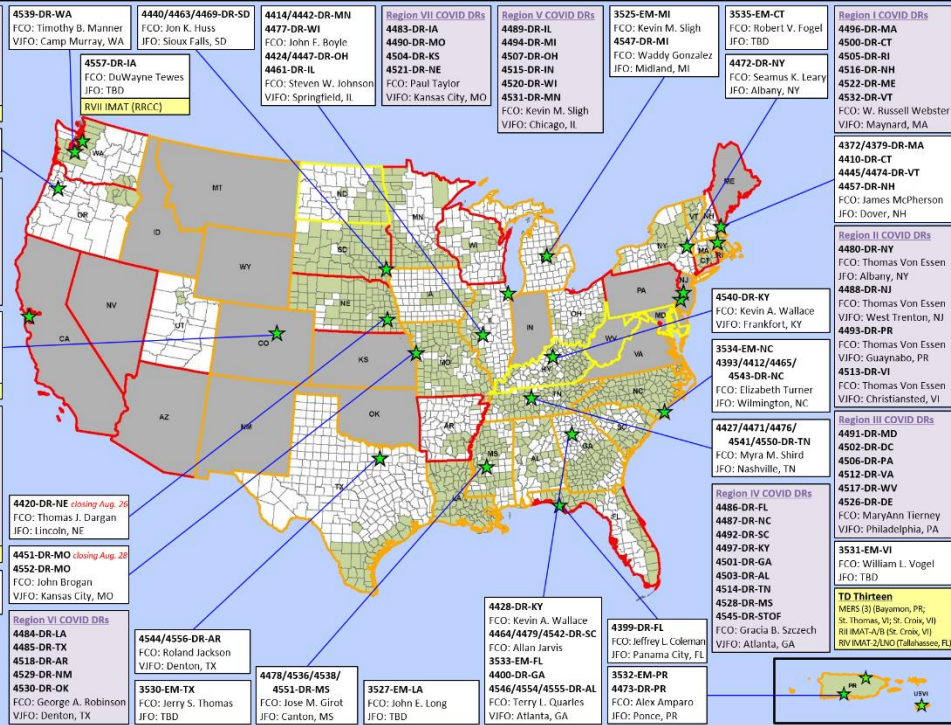
**Notes:**

NRCC / RRCCs activated for COVID-19	MS: Flooding
Region II: TD Thirteen	CT: Isaiais
NWC: (DNC Aug 17- 20); (RNC Aug 24-27)	All EOCs activated for COVID-19

**Major Disasters (DR): 109**  
**Emergency Disasters (EM): 103**

- JFOs: 10 / VJFOs: 16
- Staging Area
- Distribution Center (DC)
- Declared County (non-COVID-19 Declarations)
- Fully Activated
- Partially Activated
- Monitoring

As of 8:00 a.m. ET August 21, 2020  
 Created by FEMA NWC



N-IMATs	
2 Teams	
Red	
Blue	On Alert
Gold	

R-IMATs	
≥ 7 Teams	
I	
II	USVI
III	
IV-1	FL
IV-2	FL
V	
VI-1	
VI-2	
VII	RRCC
VIII	VJFO
IX-1	
IX-2	
X	RRCC
FMC	PMC
NMC	Deployed

Team:	US&R	MERS	FCOs	FDRCS	IM WORKFORCE
Status	>65%	>66%	≤1 Type I	= 2	
Assigned:	28	36	48	10	13,859 ▲
Unavailable:	4 (+2)	0	2	0	2,833 ▲
Deployed:	0	2 (+2)	41 (+1)	8	5,363 ▲
Available:	24 (-2)	34 (-2)	5 (-1)	2	5,663 / 41% ▼

IM CADRE AVAILABILITY SUMMARY	
Cadres with 25% or Less Availability	
EHP 22% (144/656); FL 22% (36/158); FM 22% (53/245); OPS 23% (73/318); PA 24% (704/3,126)	



# FEMA

**FEMA's mission is helping people before, during, and after disasters.**

Click [here](#) to subscribe to this briefing  
[FEMA.GOV](https://www.fema.gov)