

FEMA National Watch Center

Daily Operations Briefing

Thursday, August 26, 2021

8:30 a.m. ET



FEMA

National Current Ops / Monitoring

New Significant Incidents / Ongoing Ops

- Flooding – Tennessee
- Wildfire Activity – Western U.S
- Caldor Fire - CA
- Greenwood Fire - MN

Hazard Monitoring

- Severe Thunderstorms / Flash Flooding possible – Northern Plains, Central Plains, and Mississippi Valley
- Tropical Activity
 - Atlantic:
 - Disturbance 1: High (90%)
 - Disturbance 2: High (70%)
 - Disturbance 3: Medium (50%)
 - Eastern Pacific:
 - Tropical Depression Fourteen-E

Disaster Declaration Activity

- 2 Amendments Issued

Event Monitoring

- None



FEMA

Flooding Impacts – Tennessee



Situation: Heavy rain caused catastrophic flooding and flash flooding across Tennessee that occurred August 21-23. The most impacted areas are in Middle Tennessee in the counties of Dickson, Hickman, Houston, and Humphreys; the city of Waverly (pop 4k) is the most impacted.

Impacts: (Region IV, Update 7, Aug 25, 8:07 p.m. ET)

Safety & Security

- Search and Rescue missions continue in Dickson, Humphreys, and Hickman Counties; **1 (-2)** missing
- Humphreys county schools closed for estimated 2 weeks; TN Dept. of Education is providing support**
- Damage assessments ongoing in Hickman and Houston counties

Food, Water & Shelter

- 4 (+1)** Red Cross shelters open with **350 (+268)** occupants
- 2 water treatment plants damaged in Humphrey County
- Boil Water Notice for Waverly remains in effect; waterline break repairs continue
- Estimated 90% (+10) of Waverly station customers have water as of Aug 25**
 - Water being fed into the east end of the city today**

Health & Medical

- Waverly requested medics and providers for hospital; staff cannot get to hospital
- Fatalities: **19 (+2)** confirmed in Humphreys County
- TN Dept. of Health **administered 300 tetanus shots; pharmaceuticals and Hepatitis A vaccine available**

Energy

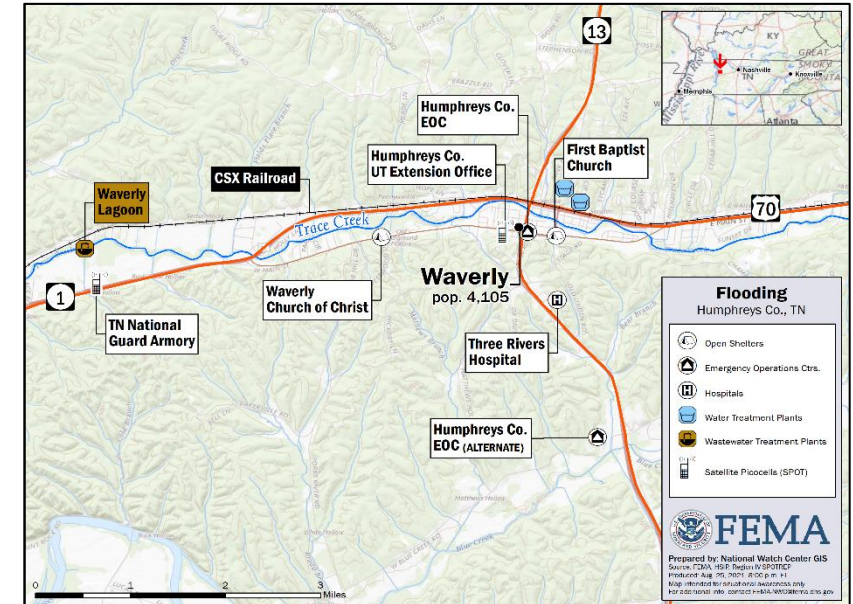
- Power returned to normal; 500 remain without power long-term due to conditions of their homes

Communications

- AT&T services in Waverly restored; Houston County 911 center taking calls over normal circuits
- TEMA Command bus arrived on location in Waverly on Aug 24; deploying a COMMU to assist with planning**
- T-MOBILE to provide 250 free Cell Phones and one month Cell Service to Humphreys County Flood Victims on Aug 26**

Transportation

- 3 bridges washed away in Dickson County; CSX railroad has been restored between Dickson and Waverly



State/Local Response:

- TN EOC at Partial Activation (COVID-19)
- Governor signed Executive Order providing relief to victims**
- Houston, Hickman and Dickson counties added for IA PDAs**
- Army/ANG supporting debris removal and air operations

FEMA / Federal Response:

- Region IV RWC continues to monitor; RRCC is rostered
- Region IV IMAT-2 & FEMA Corps deployed to Waverly, TN
- NWC at Monitoring; NRCC resumed Level III, day shift (COVID-19)
- FEMA 3BI coordinating with Regional & industry partners
- MEOV and EO (Green Hornet) will arrive in Waverly on Aug 27
- Major Disaster Declaration Approved; FEMA-4609-DR-TN
- The Governor, FEMA Administrator, FEMA Region IV Administrator, TEMA Director, staff and MG Holmes conducted a flyover of the impacted area**

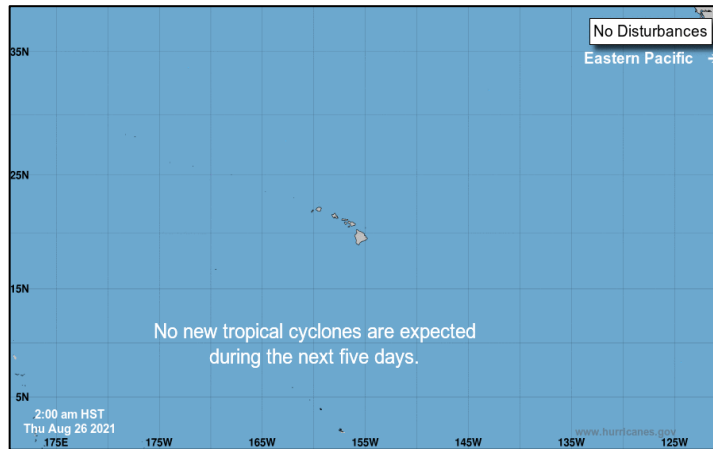
National Watch Center



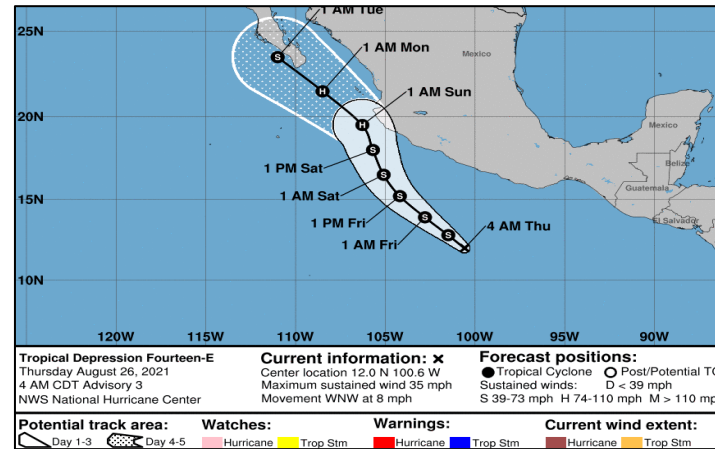
FEMA

Tropical Outlook – Five Day

Central Pacific



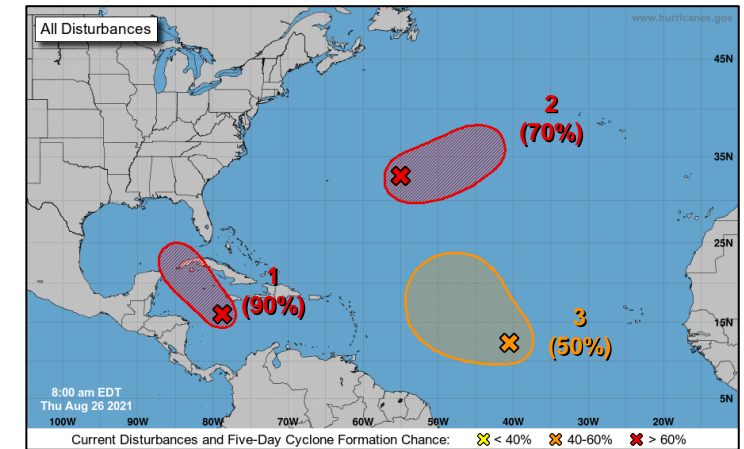
Eastern Pacific



Tropical Depression Fourteen-E (Advisory #3 as of 5:00 a.m. ET)

- Located 340 miles S of Acapulco, Mexico
- Moving WNW at 8 mph
- Maximum sustained winds at 35 mph
- Forecast to become a tropical storm today and reach hurricane intensity over the weekend

Atlantic



Disturbance 1 (as of 8:00 a.m. ET)

- Located 150 miles SSW of Jamaica
- Tropical depression or storm likely to form today or tonight
- AF Reserve reconnaissance aircraft will investigate system this today
- Formation chance 48 hours: High (90%); 5 days: High (90%)

Disturbance 2 (as of 8:00 a.m. ET)

- 600 miles E of Bermuda
- Tropical depression is likely to form this weekend
- Formation chance: 48 hours: Med (40%); 5 days: High (70%)

Disturbance 3 (as of 8:00 a.m. ET)

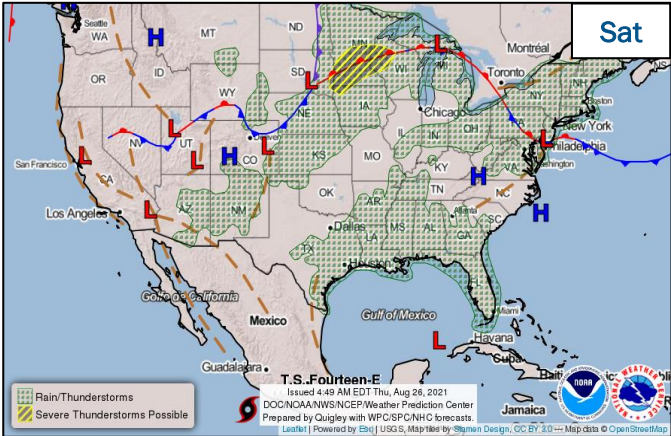
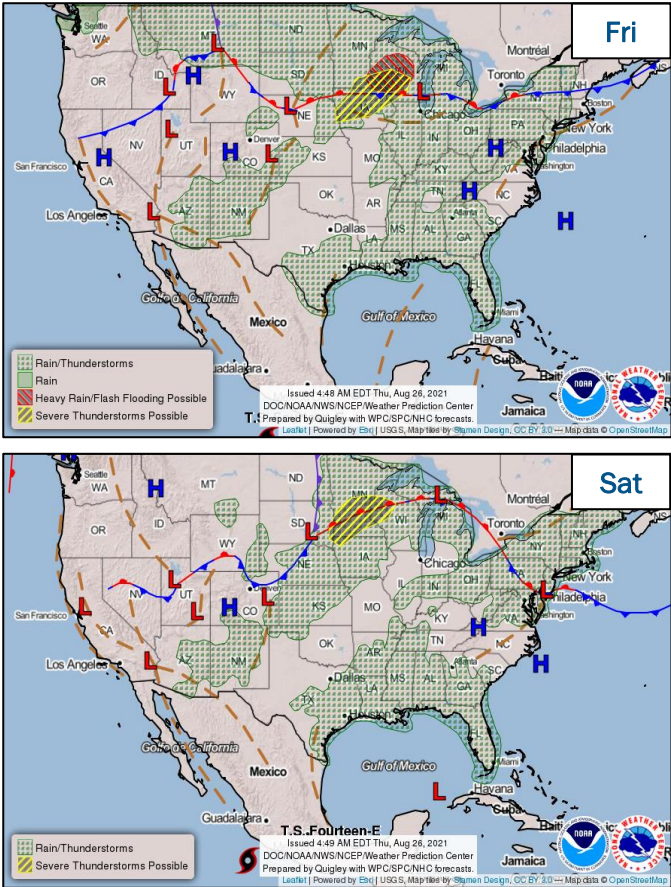
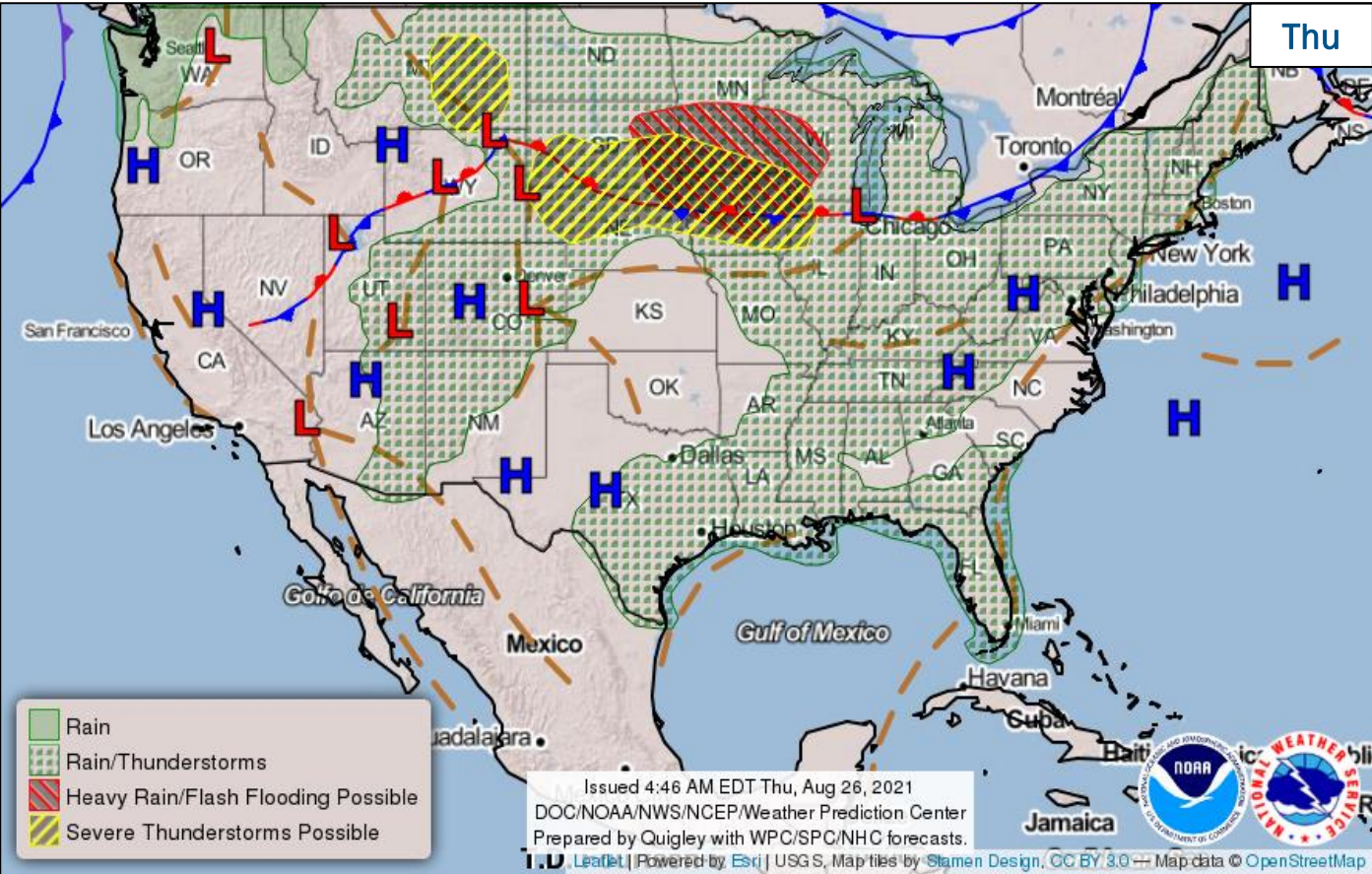
- Located 1,000 miles WSW of the Cabo Verde Islands
- Formation chance 48 hours: Medium (40%); 5 days: Medium (50%)



FEMA

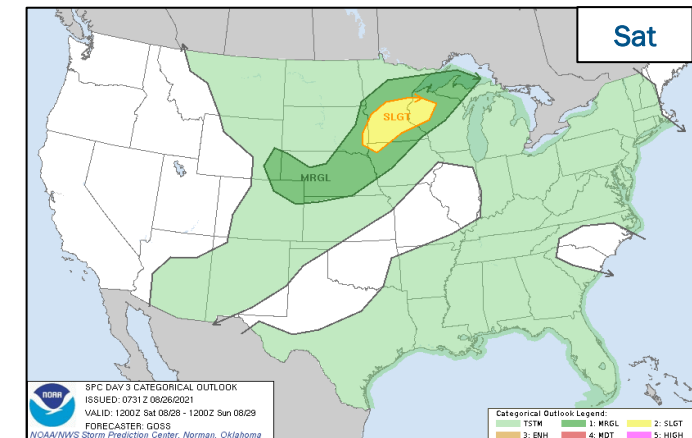
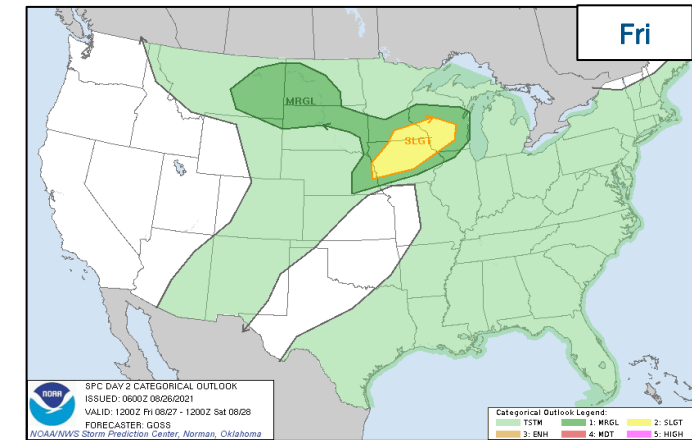
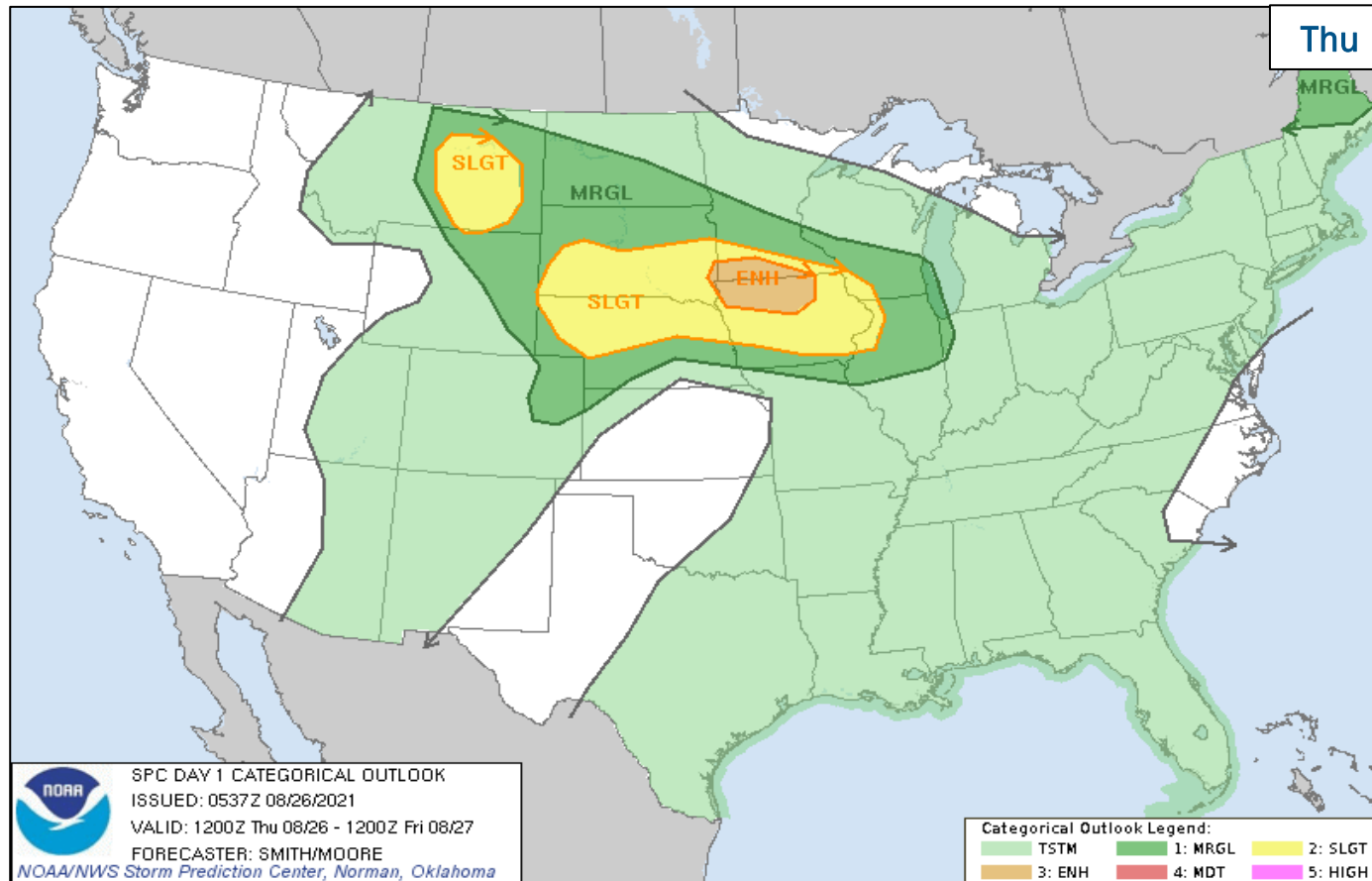
National Watch Center

National Weather Forecast



FEMA

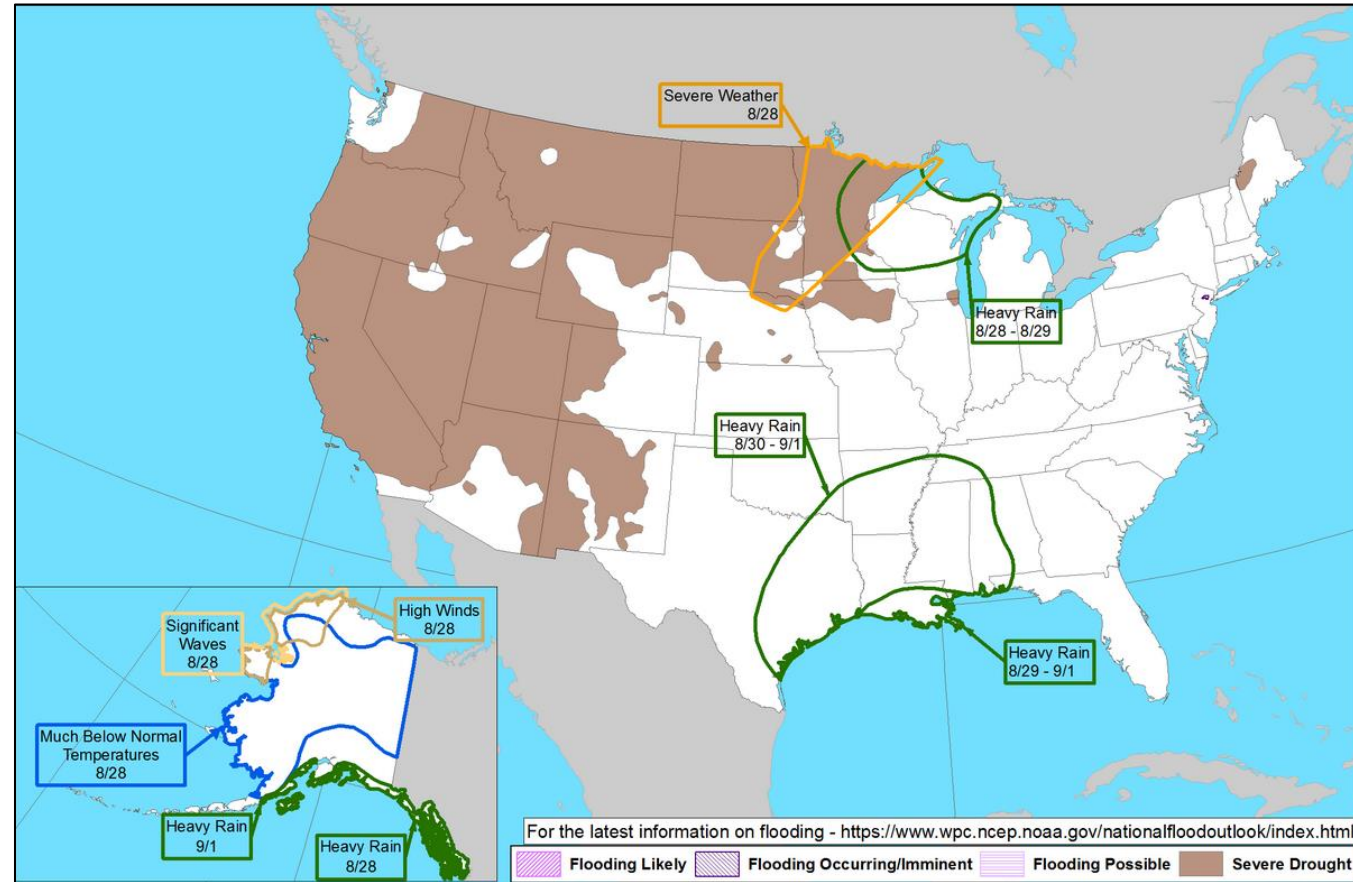
Severe Weather Outlook



FEMA

National Watch Center

Hazards Outlook – Aug 28 – Sep 1

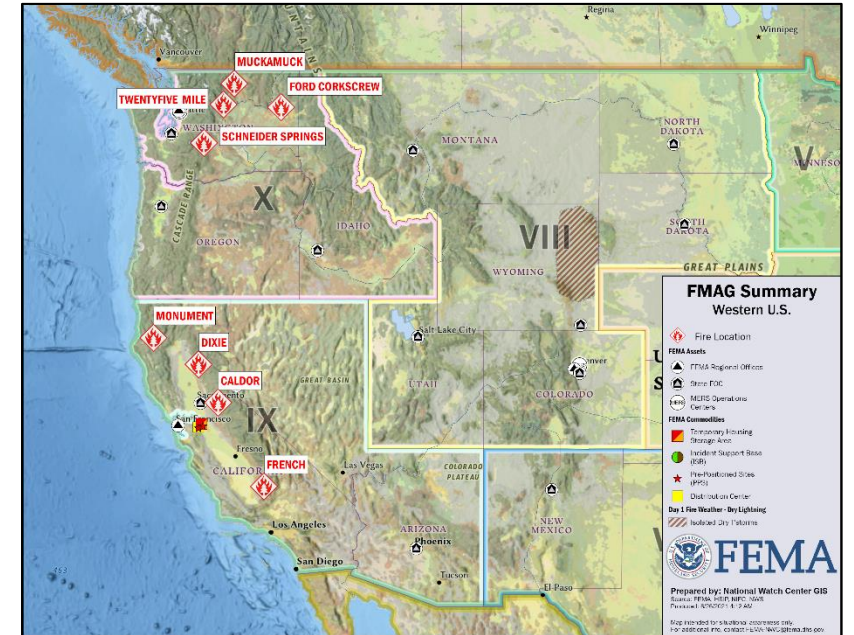


FEMA

National Watch Center

Wildfire Summary

Fire Name (County, ST)	FMAG #	Acres Burned	Percent Contained	Evacuations	Structures (Homes / Other)			Fatalities / Injuries
					Threatened	Damaged	Destroyed	
French (Kern, CA)	5416-FM-CA	21,345 (+1.8k)	19%	M: 2,551 (-529) V: 0 (-1,164)	H: 2,280 O: 1,086	H: 0 (-3,918) O: 0	H: 9 O: 8 (+8)	0 / 3 (+2)
Schneider Springs (Yakima, WA)	5415-FM-WA	71,907 (+3.7k)	8% (+5)	M: 240 V: 0	H: 0 O: 0	H: 0 O: 0	H: 0 O: 0	0 / 4 (+2)
Twentyfive Mile (Chelan, WA)	5414-FM-WA	11,055	21% (+5)	M: 1,028 V: 0	H: 688 O: 84	H: 0 O: 0	H: 1 O: 10	0 / 1
Ford Corkscrew (Stevens, WA)	5411-FM-WA	15,827 (+40)	67% (+8)	M: 811 V: 0	H: 881 O: 110	H: 5 O: 12	H: 30 O: 113	0 / 8 (+3)
Muckamuck (Okanogan, WA)	5410-FM-WA	13,119	50% (+5)	M: 50* V: 0	H: 54 O: 0	H: 0 O: 0	H: 0 O: 0	0 / 1
Caldor (El Dorado, CA)	5413-FM-CA	126,566 (+3.5k)	12% (+1)	M: 33,056 V: 0	H: 16,911 O: 577	H: 23 O: 14 (+3)	H: 465 (+4) O: 178 (+2)	0 / 2
Monument (Trinity, CA)	5412-FM-CA	154,344 (+2.2k)	20%	M: 2,000 V: 0	H: 7,100 O: 6,000	H: 3 O: 0	H: 20 O: 30	0 / 4
Dixie (Plumas, CA)	5400-FM-CA	742,724 (+9.2k)	45% (+2)	M: 2,732 V: 0	H: 11,782 O: 31	H: 56 O: 36	H: 698 O: 575	0 / 6



* Includes 50 emergency responders evacuated
 (Evacuations: M = Mandatory / V = Voluntary;
 Structures: H = Homes and Mixed
 Commercial/Residential / O = Non-residential
 Commercial/Other Minor Structures)



FEMA

National Watch Center

Caldor Fire – California

Fire Name (County, ST)	FMAG #	Acres Burned	Percent Contained	Evacuations	Structures (Homes / Other)			Fatalities / Injuries
					Threatened	Damaged	Destroyed	
Caldor (El Dorado, CA)	5413-FM-CA	126,566 (+3.5k)	12% (+1)	M: 33,056	H: 16,911	H: 23	H: 465 (+4)	0 / 2
				V: 0	O: 577	O: 14 (+3)	O: 178 (+2)	

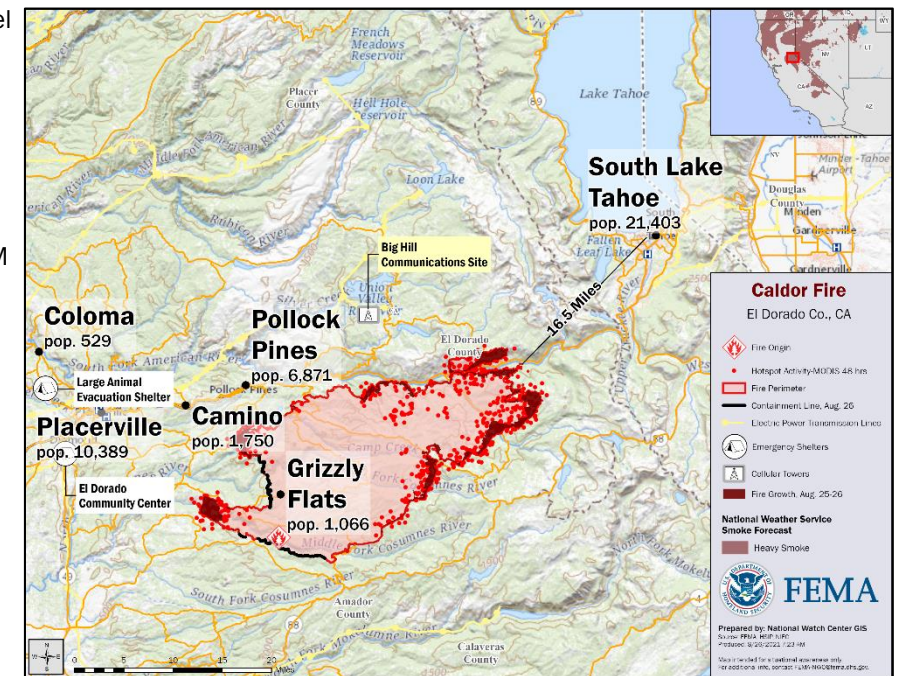
Situation: The Caldor Fire continues to grow with little change in containment. Steep and rugged terrain, critically dry fuel conditions, and lack of adequate resources have presented control challenges. Social political, and economic concerns will increase as the fire progresses toward the Lake Tahoe Basin. Looking forward (24-72 hrs out), Fire growth will continue in all areas, except the southern, western, and southeastern portions of the incident.

Impacts:

- Substantial critical utility infrastructure damage and destruction in the Grizzly Flats area
- PG&E distribution/transmission lines, distribution substations, telecom towers, and fiber optic resources threatened
 - Provides power to thousands of customers in El Dorado/surrounding areas; value of assets estimated to be \$11M
 - Approximately 3k customers currently without power (source: Caldor Fire ICS 209 report, as of Aug 25, 8:45 p.m. ET)
- Grizzly Flats water storage/distribution infrastructure threatened; 1.2k customers potentially impacted
- 5 evacuation centers established; 1 (Cameron Park) full (source: Caldor Fire ICS 209 report, as of Aug 25, 8:45 p.m. ET)
- HWY 50 is closed from Sly Park to Myers; HWY 50 is a major Trans-Sierra HWY vital to emergency evacuation
- USDA Forest Service, Pacific Southwest Region, closed 9 national forests through Sep 6

Response:

- Total personnel assigned: 2,667
- 55% of perimeter inspected; damage inspections in progress
- Incident Command estimates the fire will be contained by Aug 31
- Firefighting air tankers throughout state are flying suppression missions
- Six shelters / 500 occupants (source: Region IX APU Meeting Notes, as of Aug 25)
- Region IX IMAT-2 deployed to Sacramento, CA on Aug 25



FEMA

Greenwood Fire – Minnesota

Fire Name (County, ST)	FMAG #	Acres Burned	Percent Contained	Evacuations	Structures (Homes / Other)			Fatalities / Injuries
					Threatened	Damaged	Destroyed	
Greenwood (Lake, MN)	NO REQUEST	21,720	0%	M: 309	H: 294	H: 0	H: 0	0 / 0
				V: 0	O: 0	O: 0	O: 0	

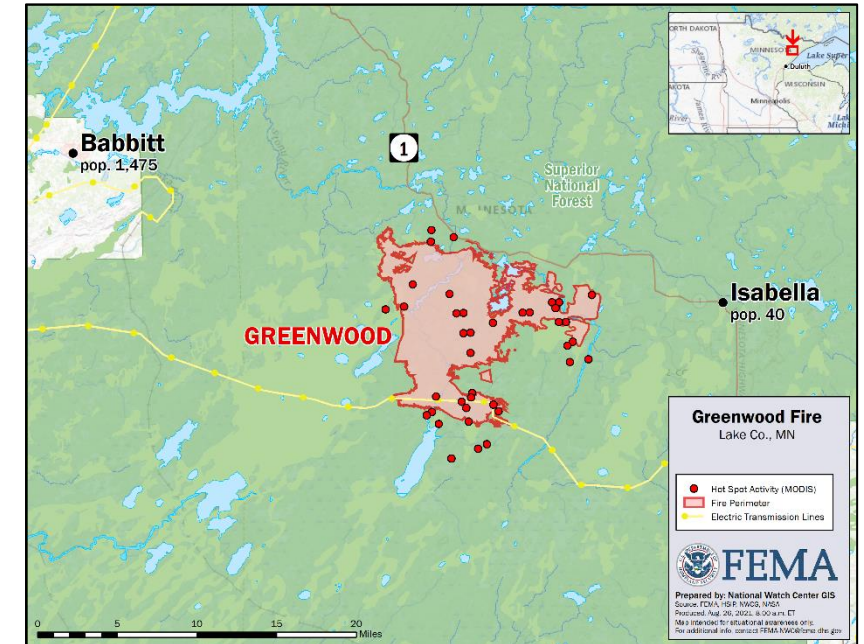
Situation: The Greenwood Fire is currently burning 10 miles west of the community of Isabella, in Lake County, MN and is being fueled by dry conditions and gusting winds. No injuries or structure damage has been reported. Operations to assess additional structure, critical infrastructure, and recreational sites threatened by fire growth are ongoing. There have been no requests for FEMA assistance.

State/Local Response:

- MN EOC is at Normal Operations
- One shelter; 1 occupant *(ARC Midnight Shelter Count, as of 7:01 a.m. ET)*
- Hwy 2 closed from Forest Hwy 11 to Hwy 1; Hwy 1 closed from New Tomahawk Rd to Lankinen Rd
- Temporary flight restriction for aircraft is in place over the fire area

FEMA / Federal Response:

- Region V RWC continues to Monitor; RRCC is at Level III (COVID-19)
- NWC at Monitoring; NRCC resumed Level III, day shift (COVID)
- U.S. Forestry Service deployed IMT Type 2 (EA-Gold)



FEMA

National Watch Center

Joint Preliminary Damage Assessments

Region	State / Location	Incidents	IA	Number of Counties		Start – End
			PA	Requested	Complete	
I	NH	Severe Storms and Flooding Jul 29-30	IA	0	0	N/A
			PA	2	0	TBD – TBD
		Severe Storms and Flooding Jul 17-19	IA	0	0	N/A
			PA	3	1	8/4 – TBD
	VT	Severe Storms and Flooding Jul 29	IA	0	0	N/A
			PA	2	0	8/4 – TBD
	MA	Severe Storms and Flooding Jul 16-21	IA	0	0	N/A
			PA	5	0	8/10 – TBD
IV	NC	Severe Weather Aug 16	IA	0	0	N/A
			PA	4	0	8/25 – TBD
V	Red Lake Nation	Tornado Jul 26	IA	1	0	8/30 – TBD
			PA	1	0	8/30 – TBD
VIII	UT	Flooding Jul 15-Aug 19	IA	7	0	8/24 – 9/7
			PA	7	0	8/24 – 9/7
	MT	Richard Spring Wildfire Jun 15 and continuing	IA	0	0	9/7 – 9/10
			PA	3	0	9/7 – 9/10
IX	CA	August Wildfires	IA	6	5 (+2)	8/11 – TBD
			PA	6	2	8/11 – TBD



FEMA

National Watch Center

Declaration Requests in Process – 5

State / Tribe / Territory – Incident Description	Type	IA	PA	HM	Requested
Fort Peck Assiniboiné & Sioux Tribes – Severe Storm, Straight-line Winds, and Flooding	DR	X		X	Aug 3
ND – Severe Storms, Straight-line Winds, and Flooding	DR		X	X	Aug 9
MO – Severe Storms, Straight-line Winds, and Flooding	DR		X	X	Aug 13
NE – Severe Storms and Straight-line Winds	DR		X	X	Aug 18
KY – Severe Storm and Flooding	DR	X		X	Aug 19



FEMA

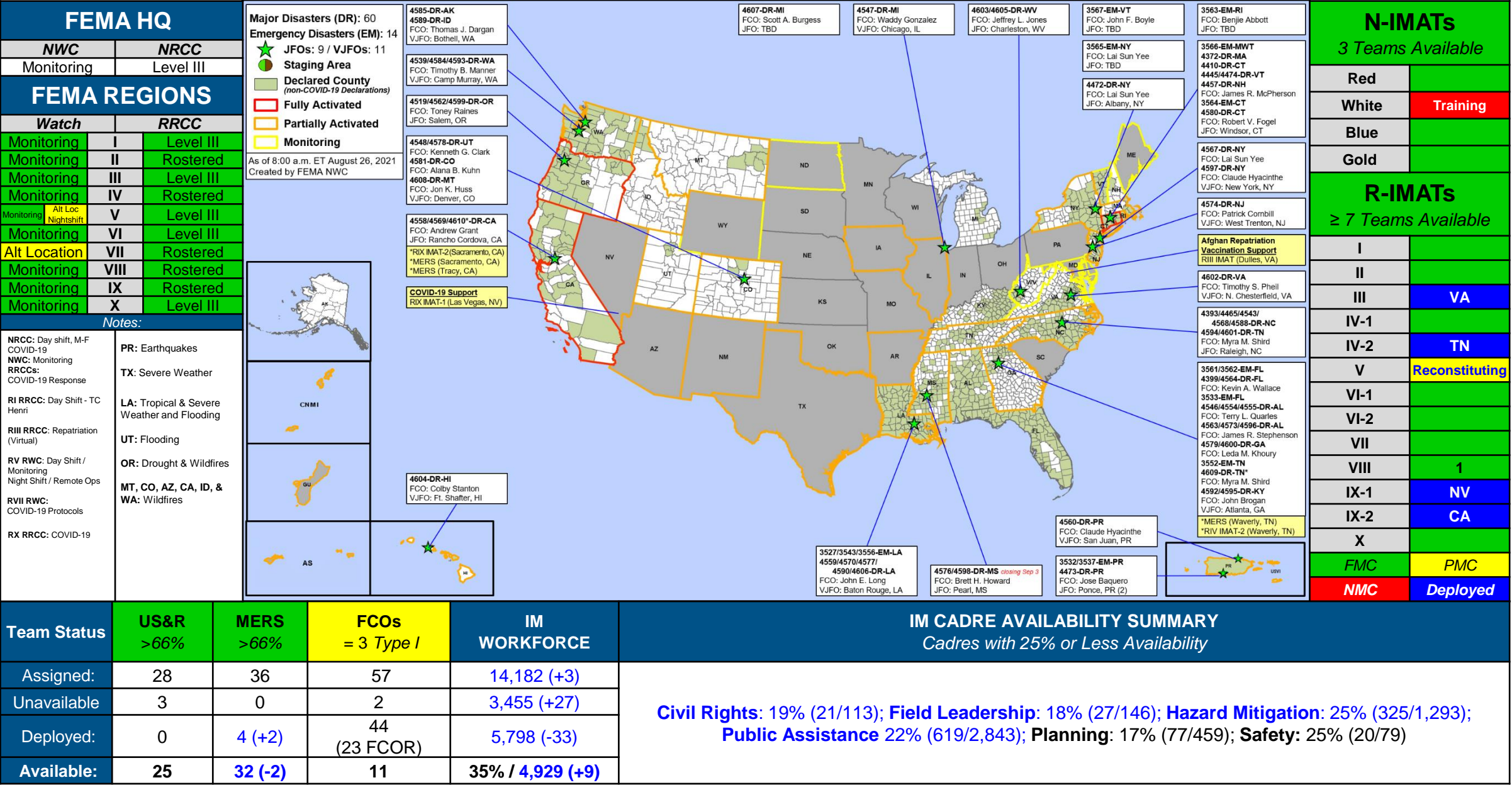
Declaration Amendments

Declaration	Number	Issued	Action
4609-DR-TN	1	Aug 25	Adds 3 counties for Individual Assistance
4609-DR-TN	2	Aug 25	Adds 2 counties for Public Assistance



FEMA

FEMA Common Operating Picture





FEMA

Helping people before, during, and after disasters.



Scan to subscribe to this briefing.