

The Disaster Center is dedicated to the idea that disaster mitigation is cost effective and individuals pursuing their own interest are the greatest potential force for disaster reduction.

Please consider making a small donation to the Disaster Center



When disaster mitigation is cost effective, we are on the road to bringing disasters to an end.



# **FEMA**

## **Daily Operations Briefing**

**Saturday, October 13, 2018**

**8:30 a.m. EDT**

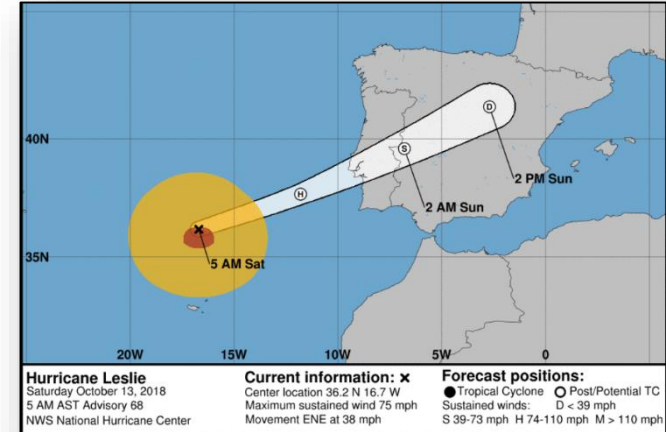
# Tropical Outlook – Atlantic



FEMA

## Hurricane Leslie (Cat 1) (Advisory #68 as of 5:00 a.m. EDT)

- 580 miles E of the Azores
- Maximum sustained winds of 75 mph
- Moving ENE at 38 mph
- Expected to transition into a hurricane-force post-tropical cyclone later today and expected to dissipate by Sunday night or Monday

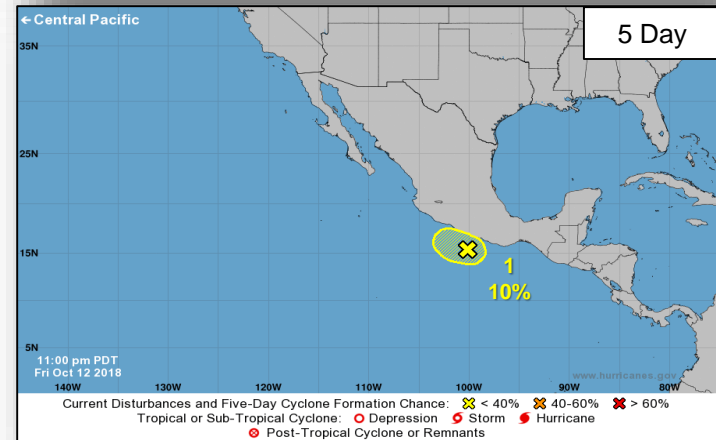
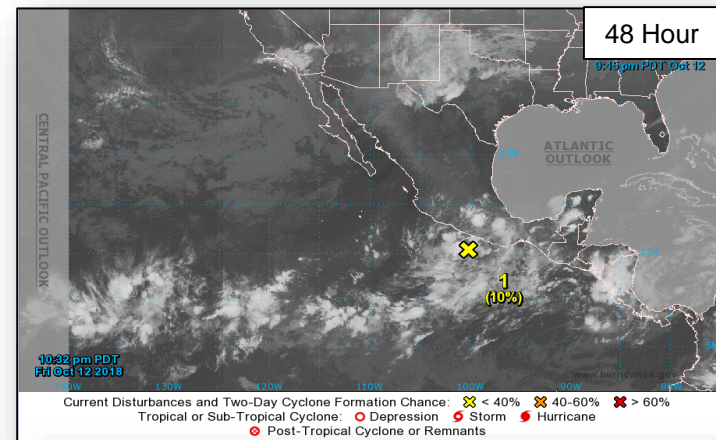


# Tropical Outlook – Eastern Pacific



## Disturbance 1 (As of 2:00 a.m. EDT)

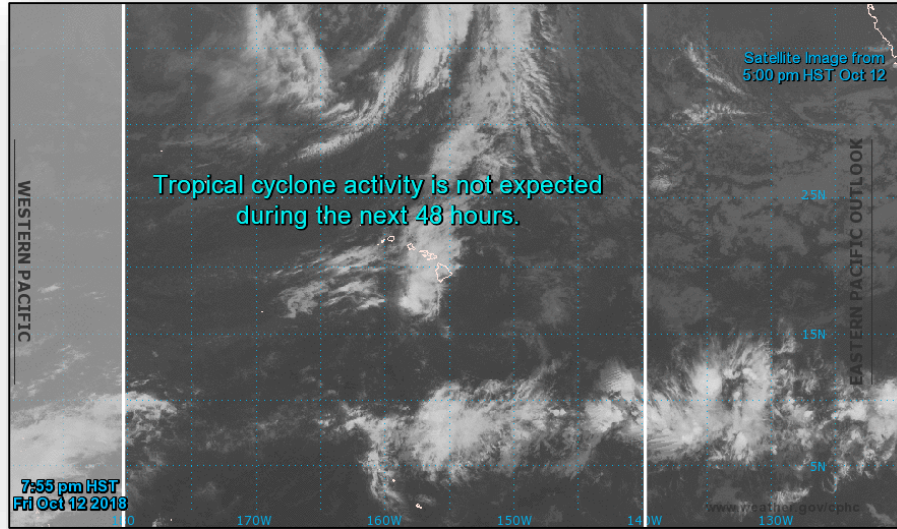
- Located off the coast of southern Mexico
- Drifting WNW
- Development, if any, should be slow
- Formation chance next 48 hours – Low (10%)
- Formation chance next 5 days – Low (10%)



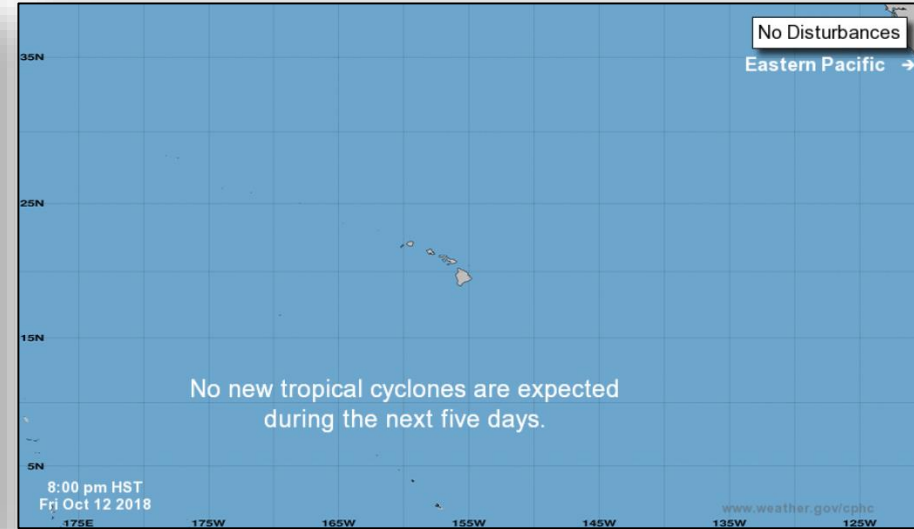
# Tropical Outlook – Central Pacific



FEMA



**48 Hour Outlook**



**5 Day Outlook**

# Tropical Cyclone Michael



FEMA

## State/Local Response

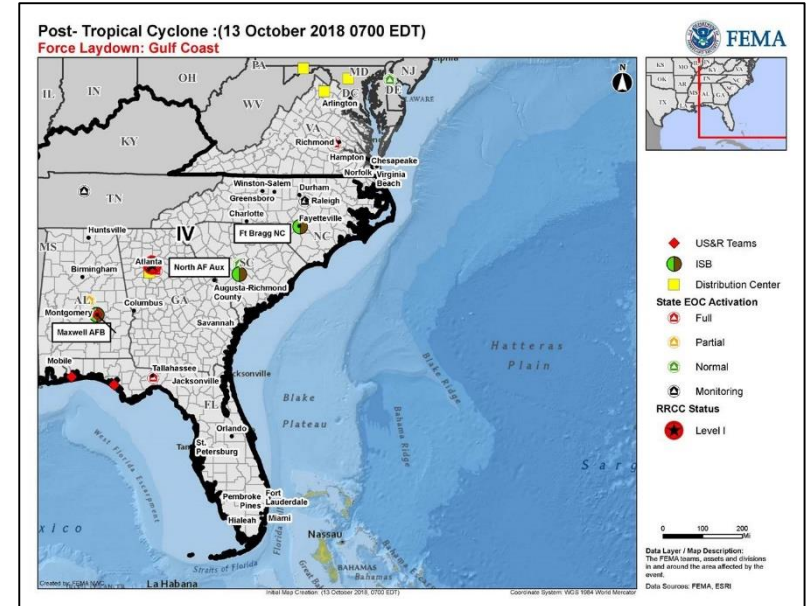
- AL EOC at Partial Activation:
  - Governor declared a statewide state of emergency
  - Emergency Declaration FEMA-3407-EM approved on October 12
- FL EOC at Full Activation:
  - Governor declared a state of emergency for 35 counties
  - Emergency Declaration FEMA-3405-EM-FL approved on October 9
  - Major Disaster Declaration FEMA-4399-DR-FL approved on October 11
- GA EOC at Full Activation:
  - Governor declared state of emergency for 108 counties
  - Emergency Declaration FEMA-3406-EM-GA approved on October 10
  - Governor requested an Emergency Declaration on October 12
- NC EOC at Monitoring
- SC EOC returned to Normal Operations
- TN EOC at Monitoring (EMAC support)
- VA EOC at Full Activation; Governor declared a state of emergency
- DE EOC returned to Normal Operations

## FEMA Region IV

- RRCC at Level I (24/7), all ESFs, DCO/DCE and DHS NPPD
- LNOs deployed to FL, GA, and AL
- IMAT-2 deployed to FL EOC

## FEMA HQ/Federal Response

- NRCC at Level II with select ESFs
- National IMAT East deployed to FL EOC
- Region II IMAT deployed to AL EOC
- Region V IMAT deployed to GA EOC
- ISB Team deployed to Montgomery, AL
- Staging areas: Montgomery, AL (Maxwell AFB); Fayetteville, NC (Ft Bragg); North AF AUX, SC



# Tropical Cyclone Michael



FEMA

## Safety and Security

- US&R:
  - Pensacola, FL: Red IST, IST cache, FSARCG
  - Mexico Beach, Panama City, & Calhoun County, FL – 4 NIMS type 1 task forces and 6 MRPs – Water Rescue are conducting ground based wide area search operations
  - 1 HEPP demobilized October 12, 2018

## Food, Water, Sheltering

- Shelters / Occupants: FL: 27 / 2,877; AL: 2 / 74; GA: 3 / 148 (Region IV ESF 6)
- FL: All evacuation orders have been lifted
- Water: FL: 15 active boil water advisories issued; GA: 7 counties under boil water advisories

## Health and Medical

- GA: 7 hospitals & 20 nursing homes/assisted living facilities on generator power, 6 dialysis centers closed
- FL: 4 hospitals closed; 8 dialysis centers closed; 23 nursing homes/assisted living facilities closed, 20 on generator power, 2 without power
- HHS DMATS: FL: 6; AL 1 (and 1 DMORT); 1 cache staged in Atlanta, GA

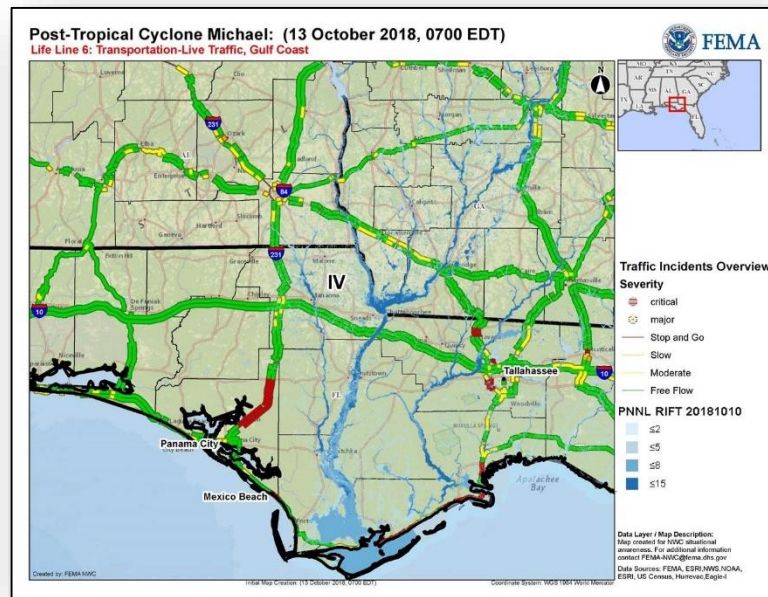
Energy: Significant power outages continue across FL, GA, and AL; restorations slowly improving (Region IV SitRep, October 12, 2018, 6:00 p.m. EDT)

## Communications

- Cellular networks over 97% available across affected regions with localized outages

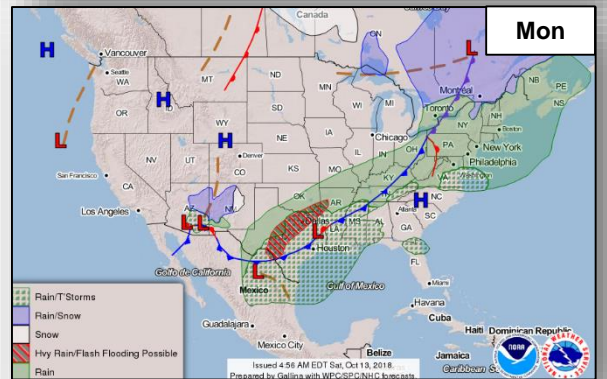
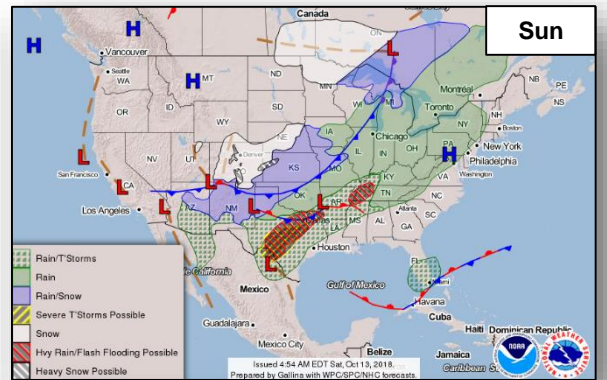
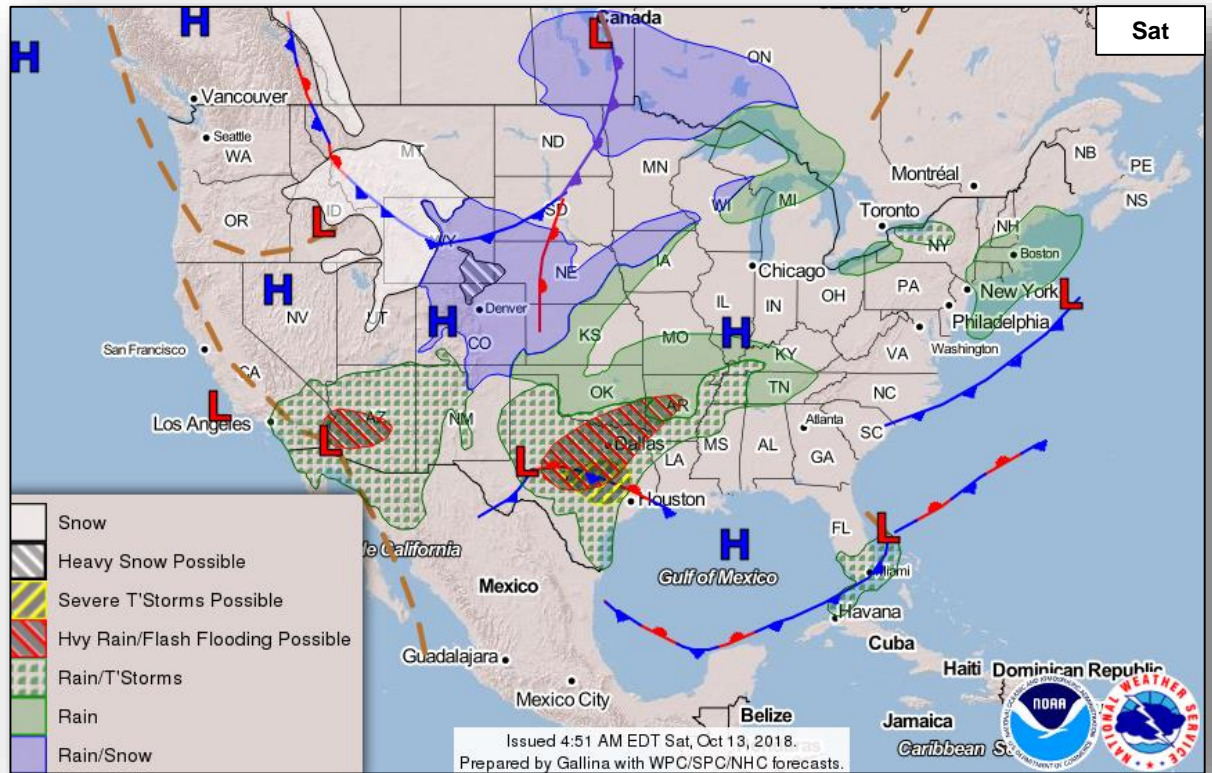
## Transportation

- Roads / Highways:
  - Roads continue to re-open in FL as debris clearance and inspections continue
  - Debris Planning and Response Teams (PRTs) and SMEs received mission assignments to support debris clearance for roads in FL and GA
- Airports: All airports are re-opened
- Port Conditions: All seaports have re-opened w/restrictions





# National Weather Forecast

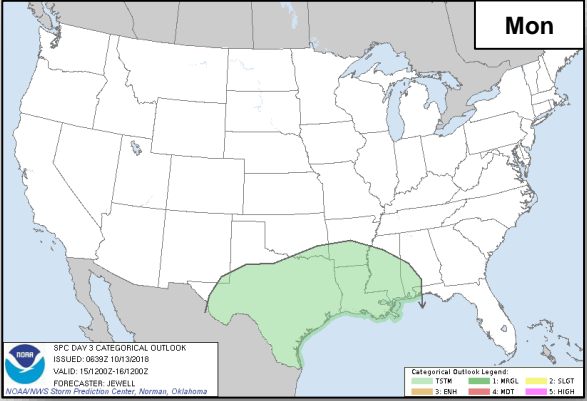
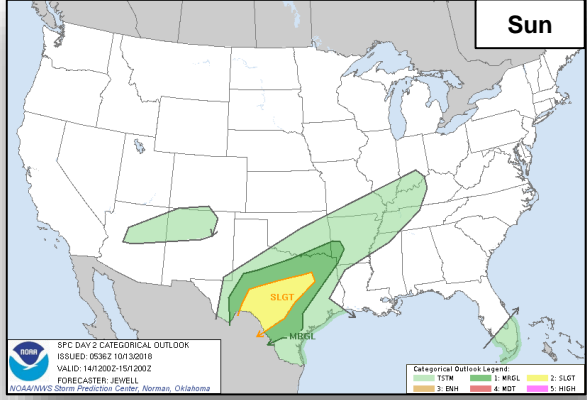
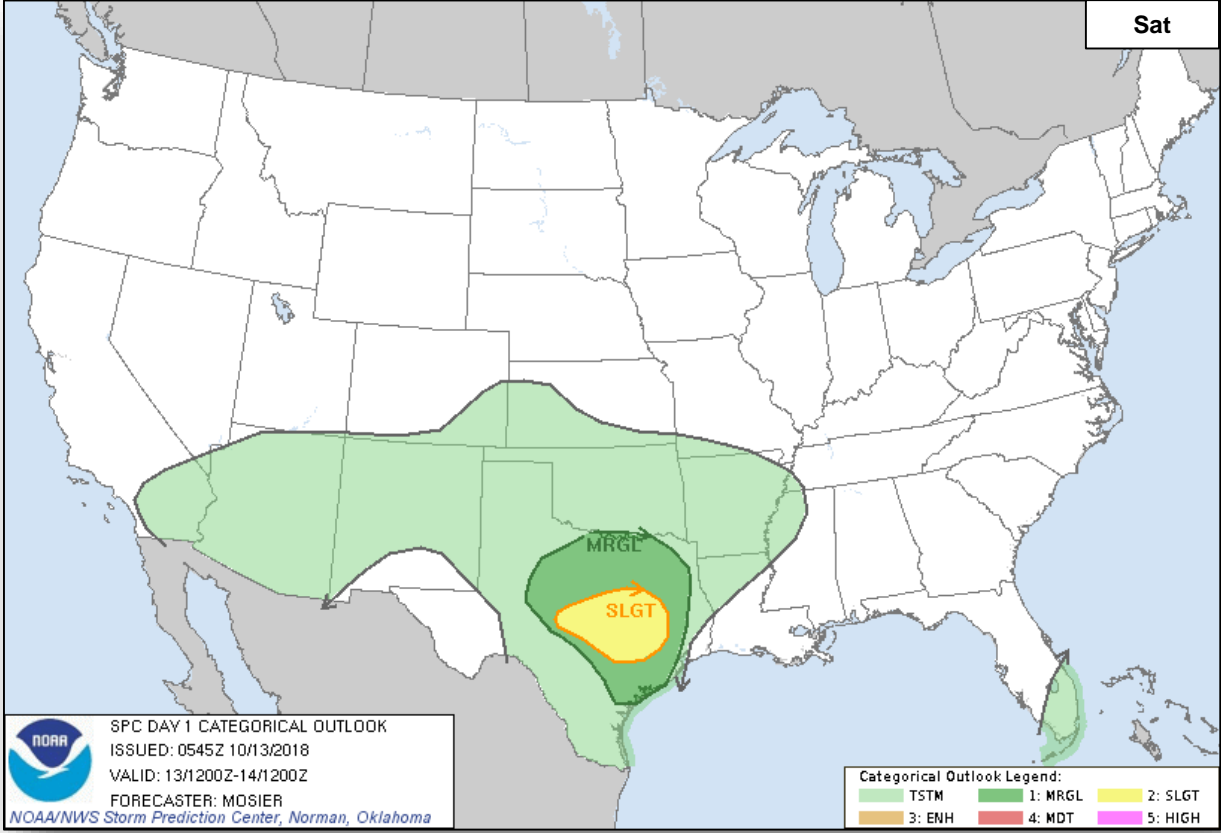




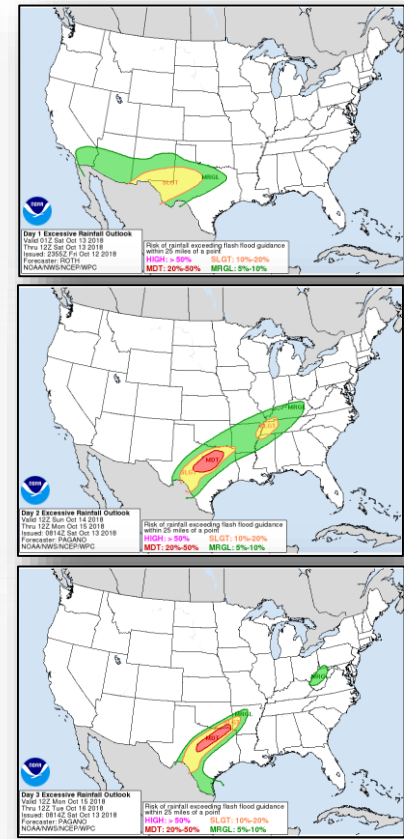
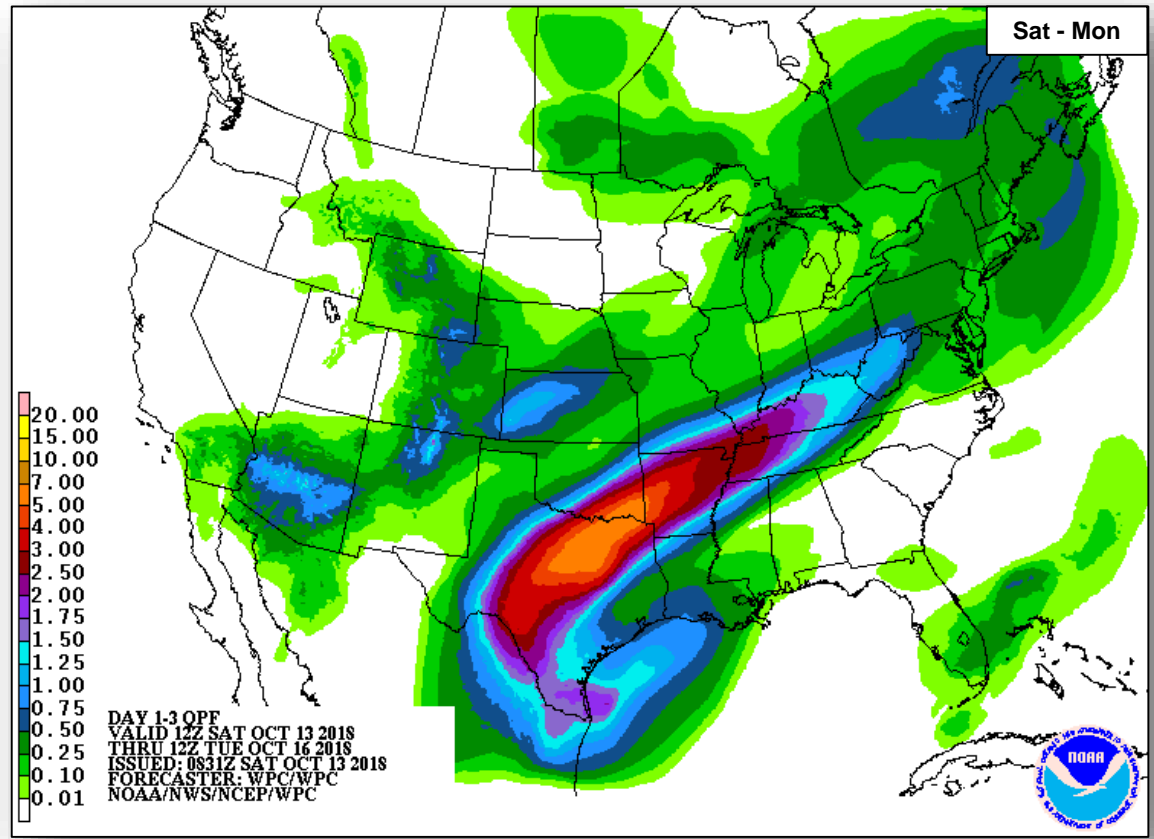
# Severe Weather Outlook



FEMA



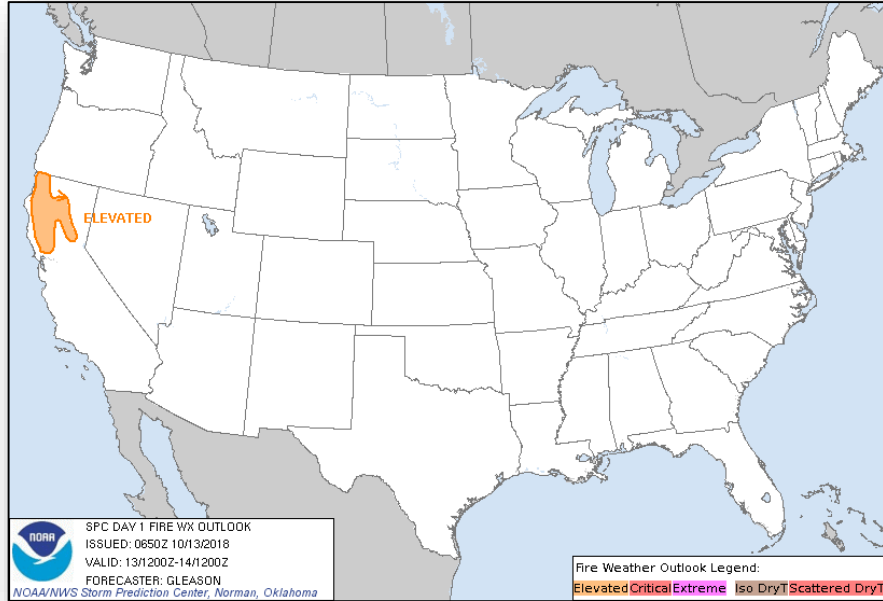
# Precipitation / Excessive Rainfall Forecast



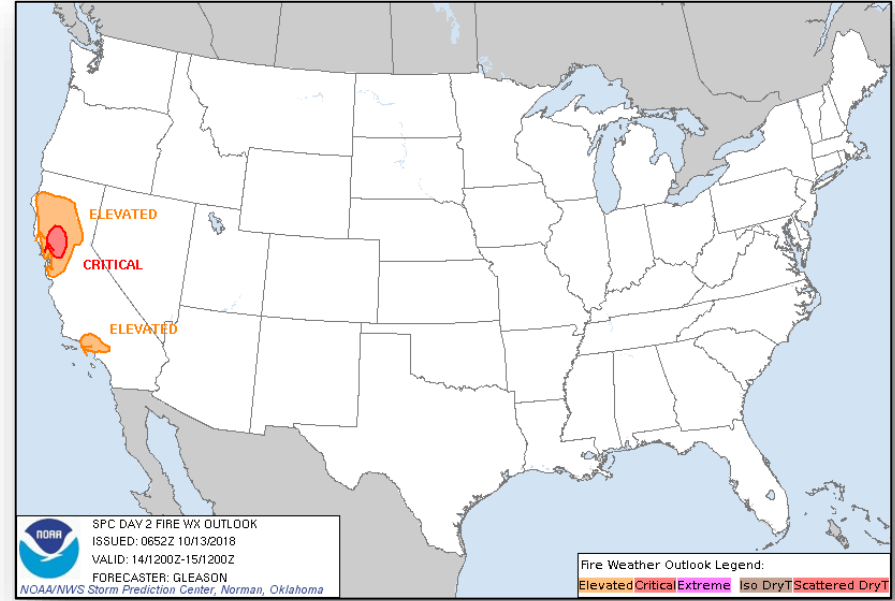
# Fire Weather Outlook



FEMA



**Saturday**

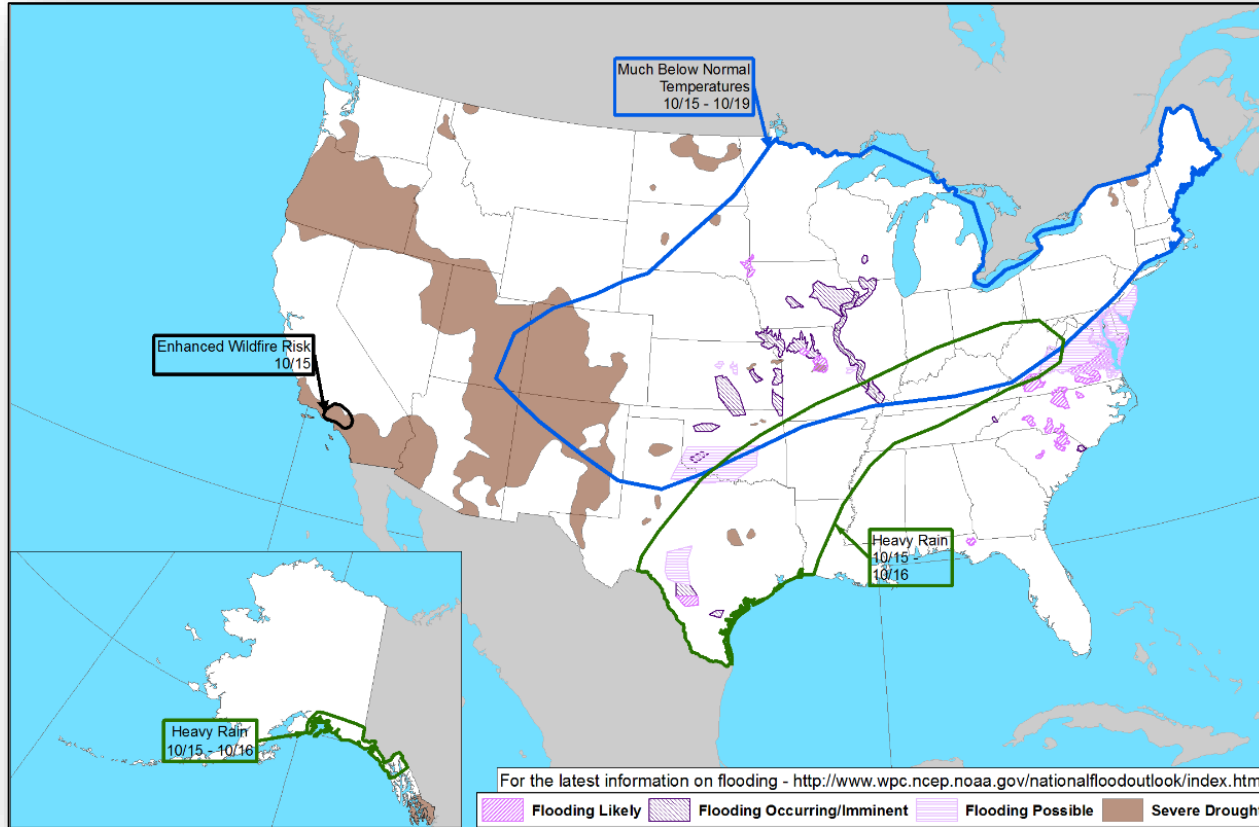


**Sunday**

# Hazards Outlook – Oct 15-19



FEMA



# Joint Preliminary Damage Assessments



FEMA

Region	State / Location	Event	IA / PA	Number of Counties		Start – End
				Requested	Completed	
III	PA	Severe Weather July 21-27, 2018	IA	12	12	9/5 – 9/27
			PA	14	12	9/5 – TBD
	PA	Severe Weather August 10-15, 2018	IA	14	14	9/5 – 9/26
			PA	15	10	9/5 – TBD



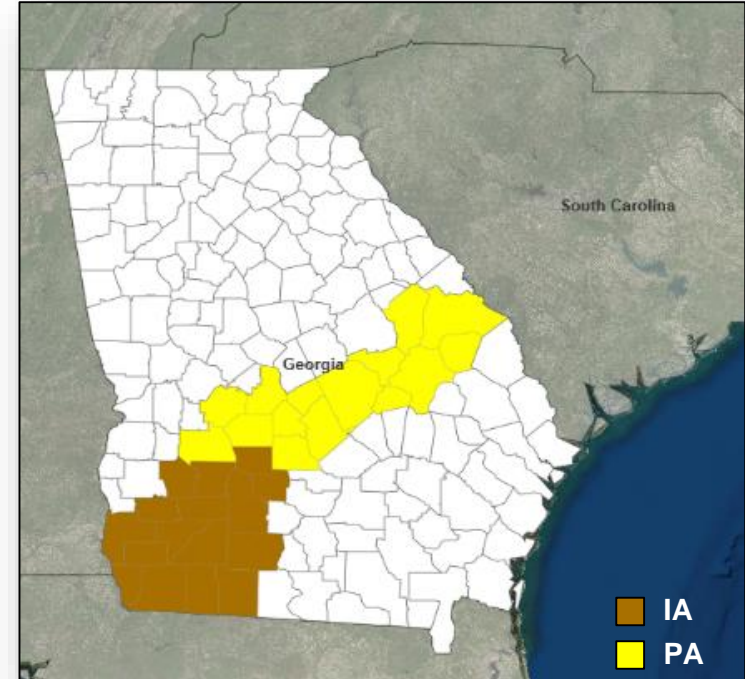
# Declaration Request



FEMA

## Georgia

- The Governor requested a Major Disaster Declaration on October 12, 2018
- For Hurricane Michael beginning on October 9, 2018 and continuing
- Requesting:
  - Individual Assistance for 16 counties
  - Public Assistance for 31 counties
  - Hazard Mitigation statewide



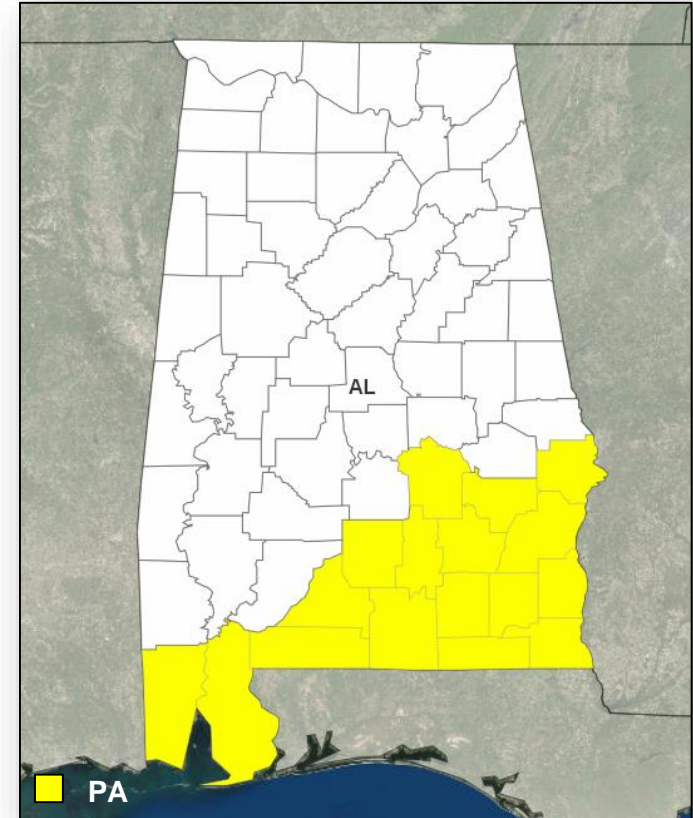
# Declaration Approved



FEMA

## **FEMA-3407-EM-AL**

- The President approved an Emergency Declaration on October 12, 2018 for the state of Alabama
- For Hurricane Michael beginning on October 10, 2018 and continuing
- Provides:
  - Public Assistance [Category B], including direct federal assistance, for four counties
  - Public Assistance [Category B], limited to direct federal assistance, for 13 counties and the Poarch Band of Creek Indians
- FCO is Gerard M. Stolar



# Disaster Requests & Declarations



**FEMA**

Declaration Requests in Process					Requests APPROVED (since last report)	Requests DENIED (since last report)
7	IA	PA	HM	Date Requested	1	0
PA – DR (Appeal) Severe Storms, Flooding, and Landslides		X	X	September 7		
NC – DR (Appeal) Severe Storms, Flooding, Landslides, and Mudslides	X	X	X	September 19		
SD – DR (Appeal) Severe Storms and Flooding		X	X	September 25		
KS – DR Severe Storms, Straight-line Winds, and Flooding		X	X	September 25		
VA – DR Hurricane Florence		X	X	October 3		
WI – DR Severe Storms, Tornadoes, Straight-line Winds, Flooding and Landslides	X	X	X	October 4		
AL – EM Hurricane Michael		X		October 10	October 12	
GA – DR Hurricane Michael	X	X	X	October 12		

# Disaster Amendments



FEMA

Amendment	Date Issued	Action
Amendment No. 5 to FEMA-4393-DR-NC	October 12, 2018	Adds 27 counties for IA and 13 counties for PA
Amendment No. 1 to FEMA-4399-DR-FL	October 12, 2018	Adds IA for four counties

# Readiness – Deployable Teams and Assets



FEMA

Resource	Force Strength	Available	Deployed	Other	Cadres with 25% or Less Availability
<b>IM Workforce</b>	12,225 ▲	2,450 ▼ 20%	6,278 ▲	3,497	DSA 9% (77/848); EA 21% (119/572); EHP 7% (32/426); ER 9% (4/46); FL 22% (35/157); FM 22% (60/271); HM 17% (170/1,013); HR 10% (24/246); IT 11% (71/632); LOG 11% (128/1,189); OPS 19% (52/278); PA 10% (187/1,872); PLAN 19% (64/341); SAF 2% (1/57); SEC 7% (8/116)
<b>National IMATs*</b> (1-2 Teams)	East : Composite: West:	Deployed Deployed B-2			
<b>Regional IMATs</b> (≤ 3 Teams)	Assigned: Available: PMC / NMC: Deployed:	13 2 (-1) 2 9 (+1)			
<b>National ISBs</b> (0 Teams)	Team A Team B Team C	Deployed Deployed Deployed			
<b>US&amp;R</b> (>33-65%)	Assigned: Available: PMC / NMC: Deployed:	28 16 2 10			
<b>MERS</b> (>66%)	Assigned: Available: PMC / NMC: Deployed:	36 26 0 10			
<b>FCO</b> (2 Type I)	Assigned: Available: PMC / NMC: Deployed:	32 11 (-1) 0 21 (+1)			
<b>FDRC</b> (≤1)	Assigned: Available: PMC / NMC: Deployed:	13 3 2 8			

As of 3:00 a.m. EDT Oct 13, 2018 Created by: FEMA NWC

\* **B-2 Status:** Assemble ≤ 2-hrs, On Site ≤ 18-hrs; **B-48 Status:** Assemble and deploy ≤ 48hrs; **Charlie Status:** No team assemble time requirement



# FEMA Readiness – Activation Teams



FEMA

Status		Activated Team	Activation Level	Activation Times	Reason / Comments
<b>NWC</b> (5 Teams)	Steady State				
<b>NRCC</b> (2 Teams)	Activated	Gold	Level II	24/7	Hurricane Michael
<b>HLT</b>	Activated				
<b>RWC / MOCs</b> (10 Regions)	Steady State				
<b>RRCCs</b> (10 Regions)	Activated	Region IV	Level I	24/7	Hurricane Michael

Backup Regions: **VI, V, & II**



# FEMA

**FEMA's mission is helping people  
before, during, and after disasters.**

Click here to subscribe: <https://bit.ly/2NDOcQO>