

The Disaster Center is dedicated to the idea that disaster mitigation is cost effective and individuals pursuing their own interest are the greatest potential force for disaster reduction.

Please consider making a small donation to the Disaster Center



When disaster mitigation is cost effective, we are on the road to bringing disasters to an end.



FEMA

Daily Operations Briefing

Thursday, October 18, 2018

8:30 a.m. EDT

Significant Activity – Oct 17-18



FEMA

Significant Events: Tropical Storm Michael Response; Central Texas Flooding

Tropical Activity:

- Atlantic – No new tropical cyclones expected during the next five days
- Eastern Pacific – Remnants of Tara; Disturbance 1 – High (90%); Disturbance 2 – Low (10%)
- Central Pacific – No new tropical cyclones expected during the next five days
- Western Pacific – No activity affecting U.S. interests

Significant Weather:

- Heavy rain and flash flooding possible – TX

Declaration Activity: None

Tropical Cyclone Michael



FEMA

State/Local Response

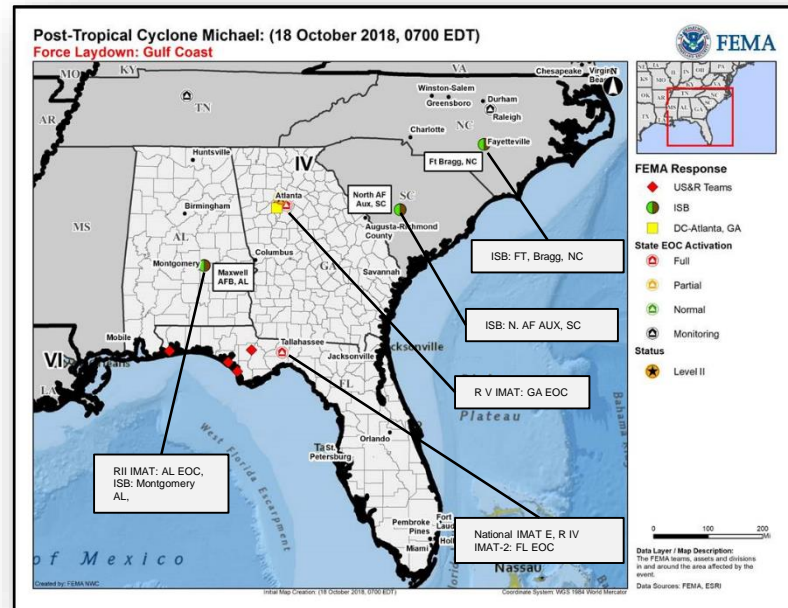
- FL EOC at Full Activation:
 - Emergency Declaration FEMA-3405-EM-FL approved October 9
 - Expedited Major Disaster Declaration FEMA-4399-DR-FL approved October 11
- GA EOC at Full Activation:
 - FEMA-3406-EM-GA approved on October 10
 - FEMA-4400-DR-GA approved October 14
- VA and TN EOC at Monitoring (EMAC support)

FEMA Region IV

- RRCC at Level II (day shift; 7:00 a.m. - Midnight)
- LNOs deployed to FL, AL, and GA
- IMAT-2 deployed to FL EOC

FEMA HQ/Federal Response

- NRCC at Level III, day shift only (select ESFs, LNOs and NRCS Gold Team)
- National IMAT East deployed to FL EOC
- Region II IMAT deployed to FL EOC
- Region V IMAT deployed to Region IV



Tropical Cyclone Michael



FEMA

Safety and Security

- US&R: [All 10 US&R teams released](#)

Food, Water, Sheltering

- Shelters / Occupants: [FL: 12 \(-2\) / 1,474 \(+141\)](#); [GA: 3 / 243 \(+21\)](#) ([ARC midnight shelter count](#))
- USACE Blue Roof Mission installation to start Friday, October 19 in Bay County; [3 Right of Entry Collection Center locations established in Panama City](#)
- Received over 39,000 tarps ([30,000 to Bay County](#)), shipped 27,000+ Oct 17; 60,000+ by Oct 28; 350,000 tarps on order. [Volunteer Florida installed over 1,340 tarps](#)
- [42 \(-2\)](#) boil water notices FL; [50 \(+12\)](#) active boil water advisories GA

Health and Medical

- FL: Hospitals: [5](#) closed, 3 partially open (ER only), 4 on generator power, 3 on partial generator power; Nursing homes: 7 closed, [8](#) on generator power, 1 re-entry complete, Assisted Living Facilities: [12](#) closed, [11](#) on generator power, 8 on partial generator power, 1 re-entry in progress; [2 no power](#)
 - [2](#) confirmed fatalities
- GA: Hospitals: [HHS demobilized from GA EOC](#)
 - 3 confirmed fatalities;
- Media is reporting 34 fatalities combined total

Energy:

- Power outages: FL – [122k \(-13k\)](#); GA – [45k \(-11k\)](#) ([SLB as of 6:00 p.m. EDT](#))
- [FL: All transmission and substations expected to be reenergized by October 20](#)
- USACE: [14](#) generator installs complete, [5](#) installs in progress, [44](#) assessments complete across impacted areas
- [Fuel points established in Bay and surrounding counties supporting responders](#)

Region IV

FL

GA



Transportation

- Roads / Highways: [Assessment of state bridges complete; all county bridge assessments to be completed today in FL](#)
- Railway: [Six short lines remain suspended in FL Panhandle area; expect minimum of 3 weeks to resolve](#)

Hazardous Waste

- FL: [14](#) wastewater facilities non-operational, [25](#) partially operational, [7](#) with unknown status; [Bay County wastewater facilities requests being met, EPA analyzing potable water samples](#)
- GA: [One](#) wastewater facility non-operational; [10](#) are partially operational; [76](#) with unknown status

Central Texas Flooding



FEMA

Situation:

Flooding and flash flooding from heavy rainfall over the past week continues to impact the Llano, Colorado, Trinity, Brazos, Nueces, and Guadalupe rivers across central Texas. Several river gauges at Moderate and Major Flood Stage, with concerns on the Llano River, Guadalupe and the Nueces River; points on the Trinity downstream from Dallas will be rising in the coming days.

Safety and Security: As flood waters recede residents are re-entering previously flooded areas

Food, Water, Sheltering: Shelters / Occupants: 13 / 108 (FEMA Region 6)

Energy: Negligible power outages reported statewide

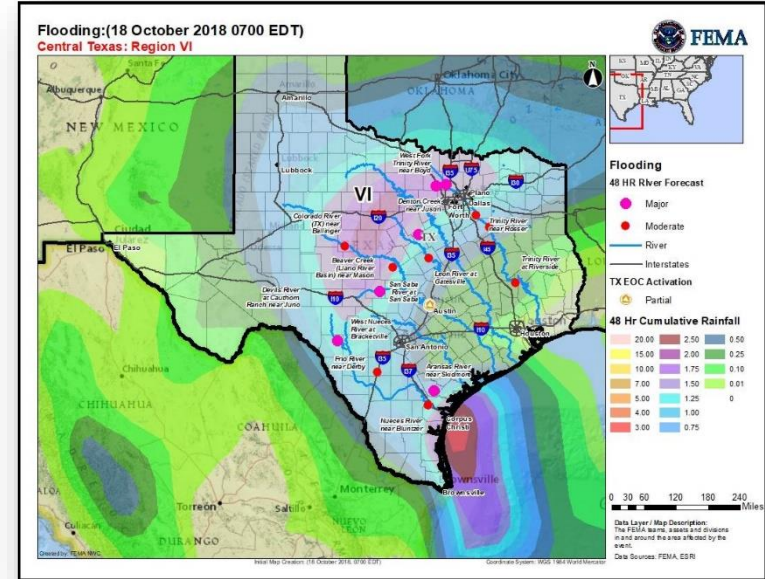
Communication: Cellular service is limited in some areas of central Texas

Transportation:

- All Interstate and major highways are open; Over 100 secondary roads impacted to some degree
- One bridge over Lake LBJ near Kingsland was destroyed, local detour available

Hazardous Waste: Waste water facilities operating, NSTR

No Anticipated or reported request for FEMA assistance; no reported unmet needs



State/Local Response:

- TX EOC at [Partial Activation](#)
- The Governor declared a State of Emergency

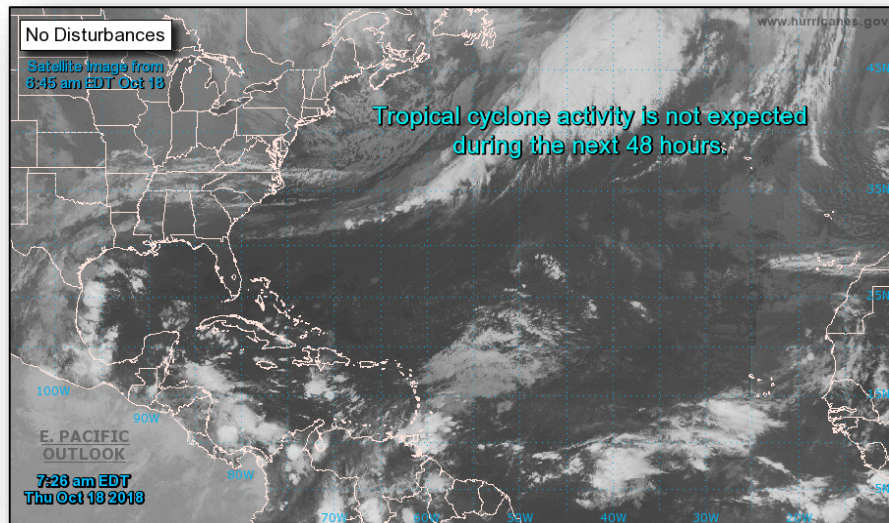
FEMA Response:

- Region IV RWC at Enhanced Watch (day shift)
- [Four](#) LNOs deployed to TX EOC
- FEMA HQ NWC continues to monitor

Tropical Outlook – Atlantic



FEMA



48 Hour Outlook



5 Day Outlook

Tropical Outlook – Eastern Pacific

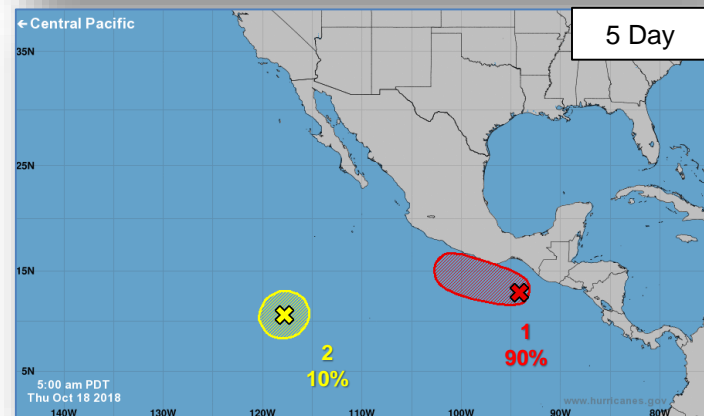
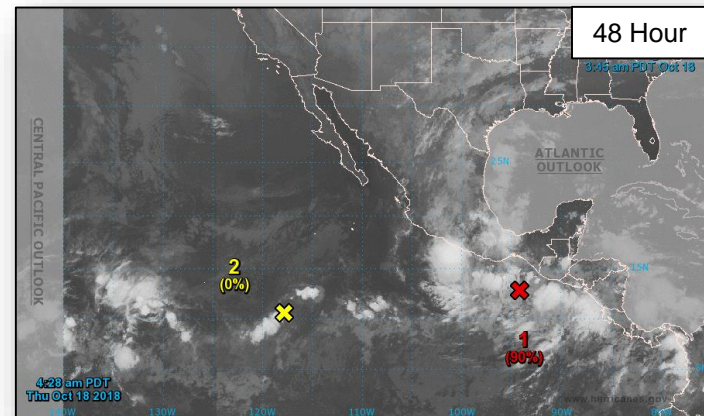


Disturbance 1 (as of 8:00 a.m. EDT)

- Located south of the Gulf of Tehuantepec
- Moving WNW at 10-15 mph
- A tropical depression or tropical storm is likely to form during the next day or two
- Formation chance next 48 hours – High (90%)
- Formation chance next 5 days – High (90%)

Disturbance 2 (as of 8:00 a.m. EDT)

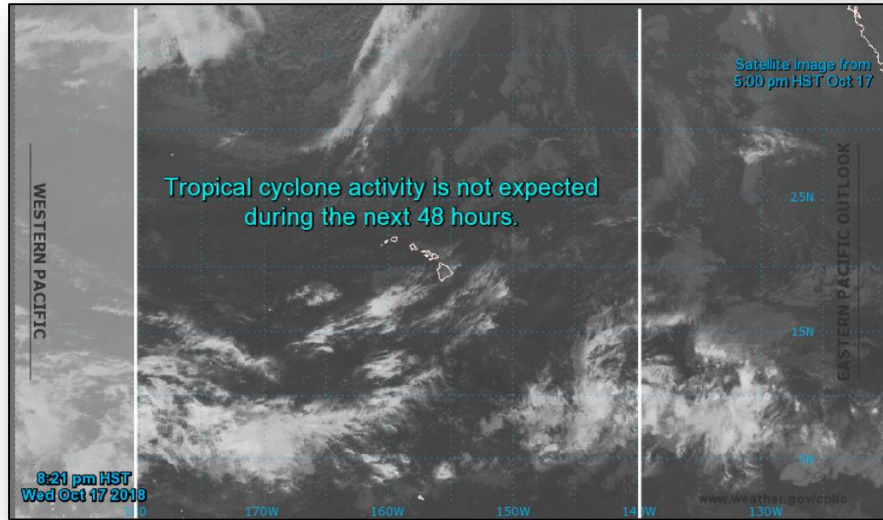
- Located 900 miles SSW of Baja California
- Some slow development is possible
- Formation chance next 48 hours – Low (near 0%)
- Formation chance next 5 days – Low (10%)



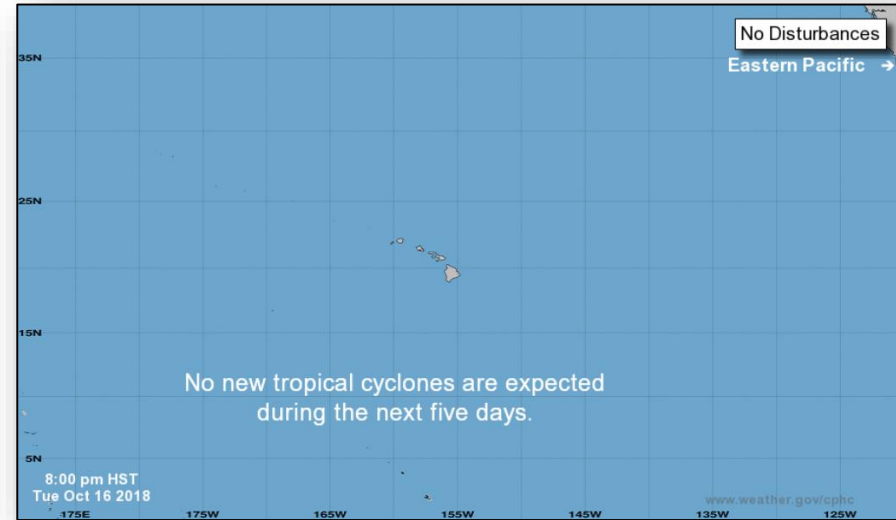
Tropical Outlook – Central Pacific



FEMA

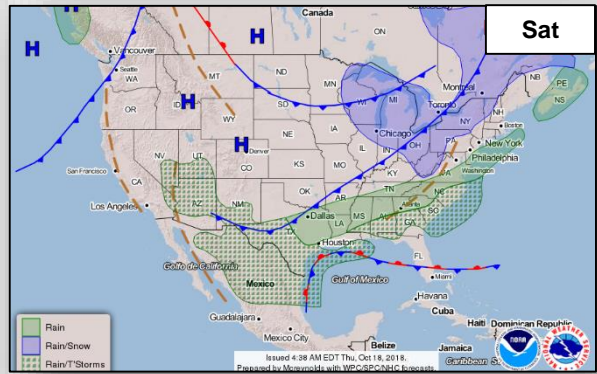
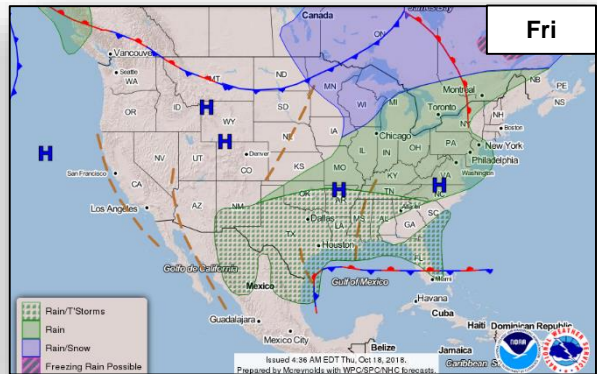
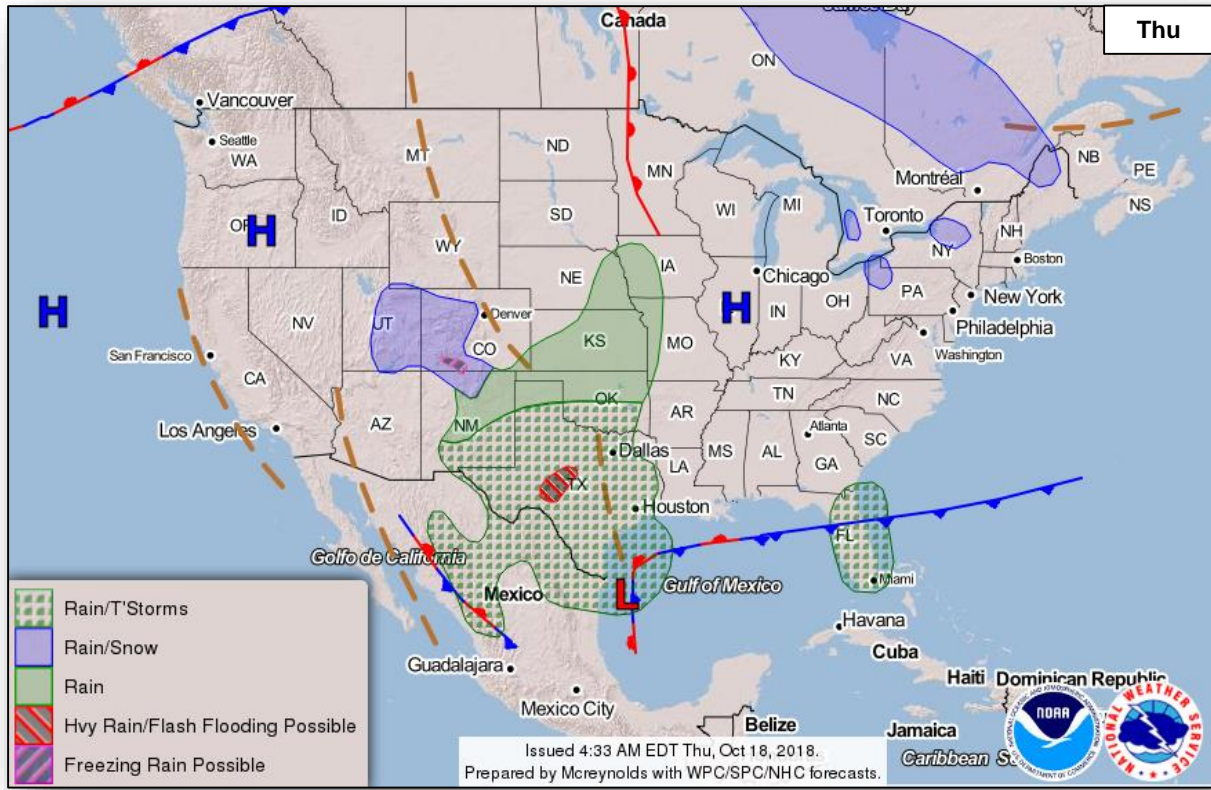


48 Hour Outlook



5 Day Outlook

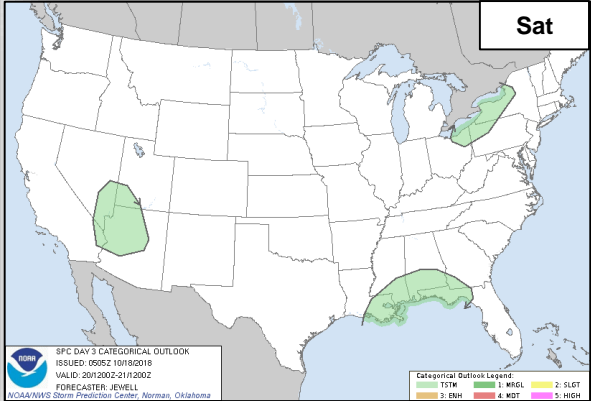
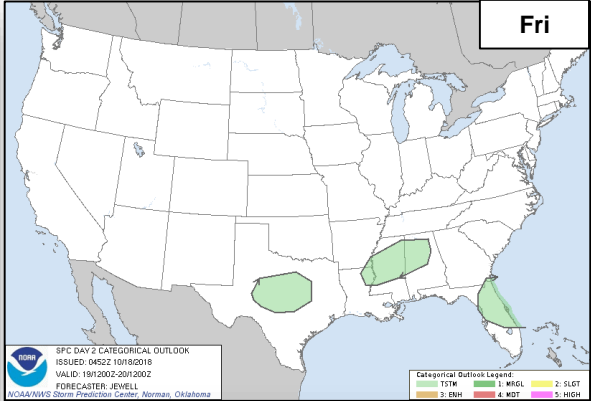
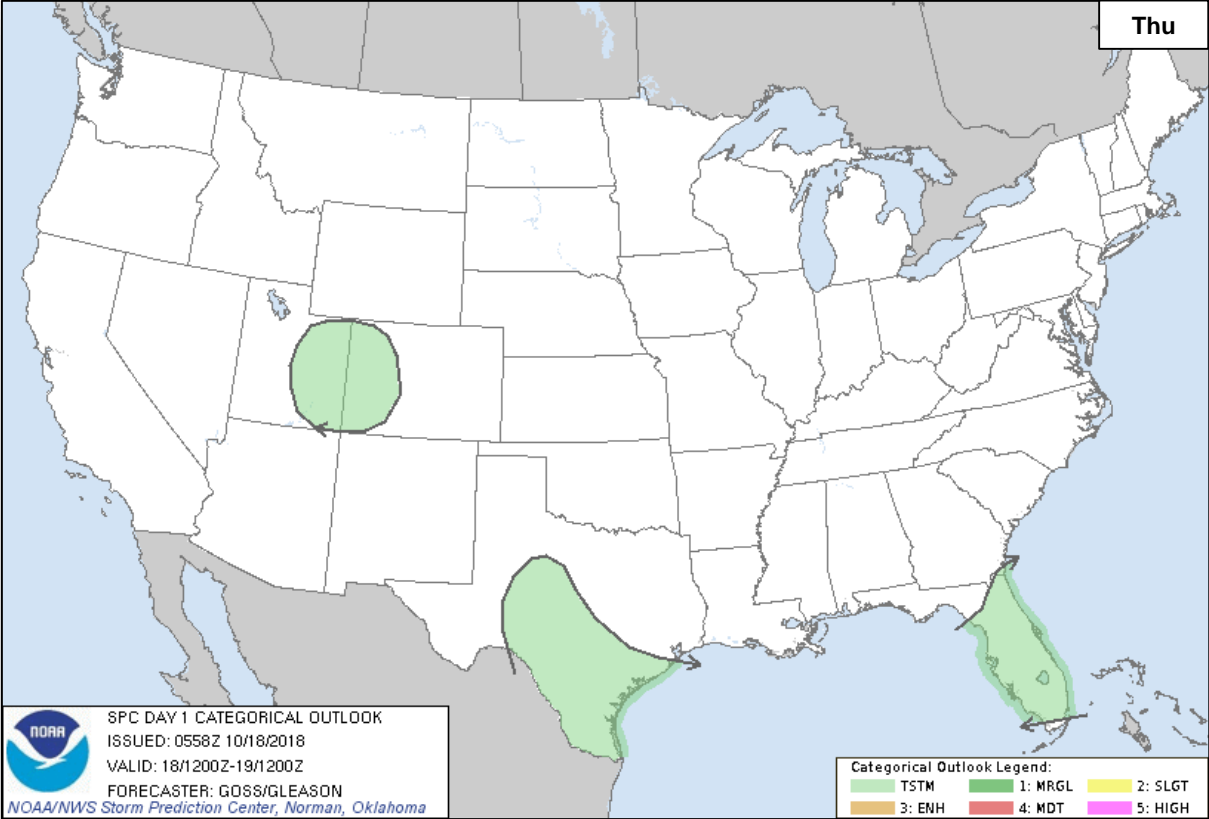
National Weather Forecast



Severe Weather Outlook



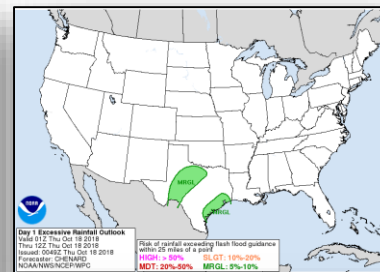
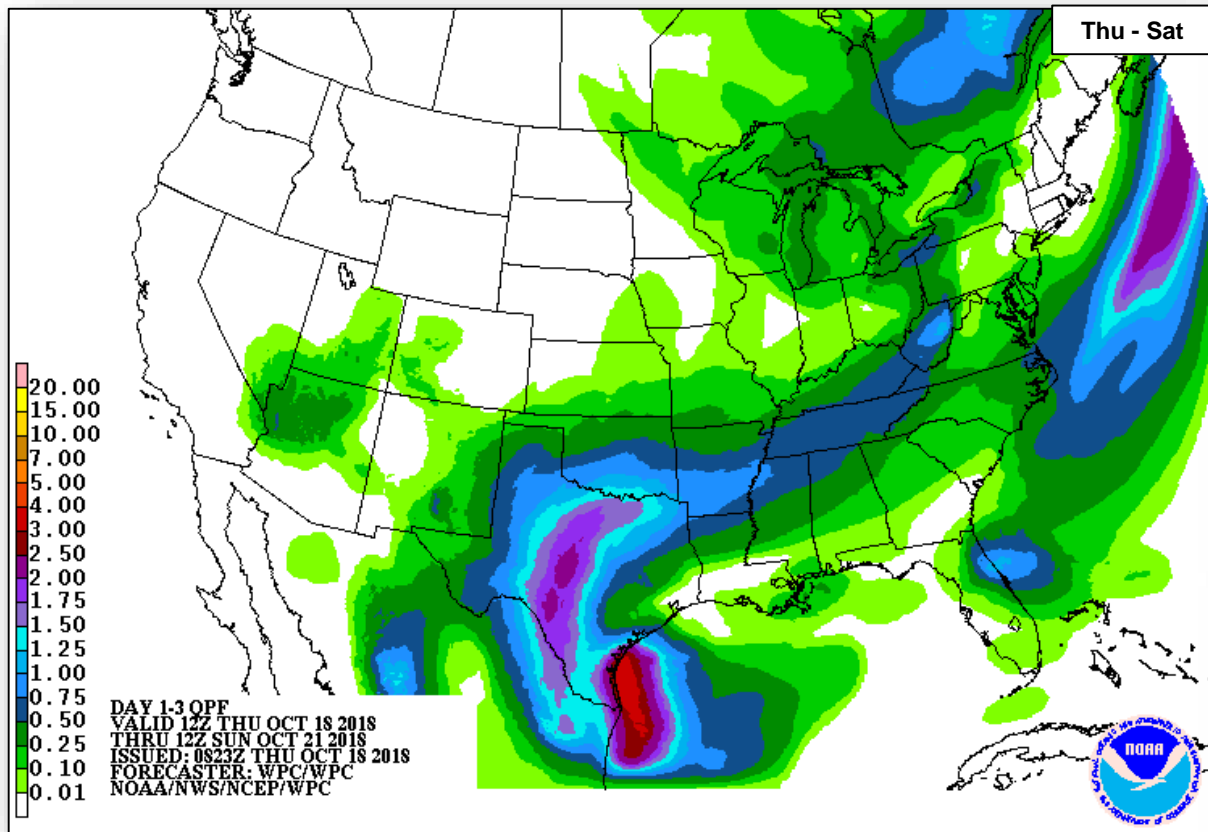
FEMA



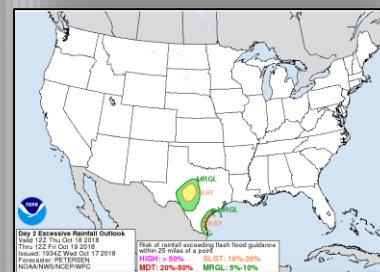
Precipitation / Excessive Rainfall Forecast



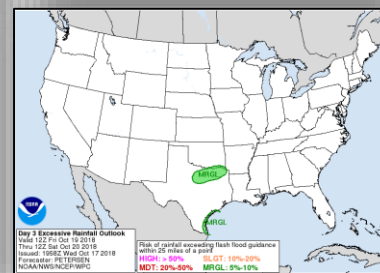
FEMA



Thu



Fri

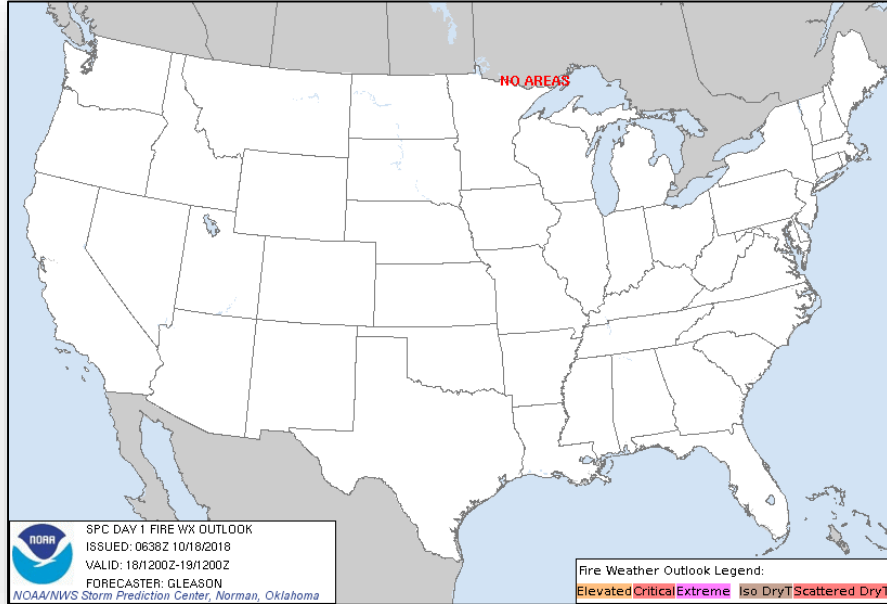


Sat

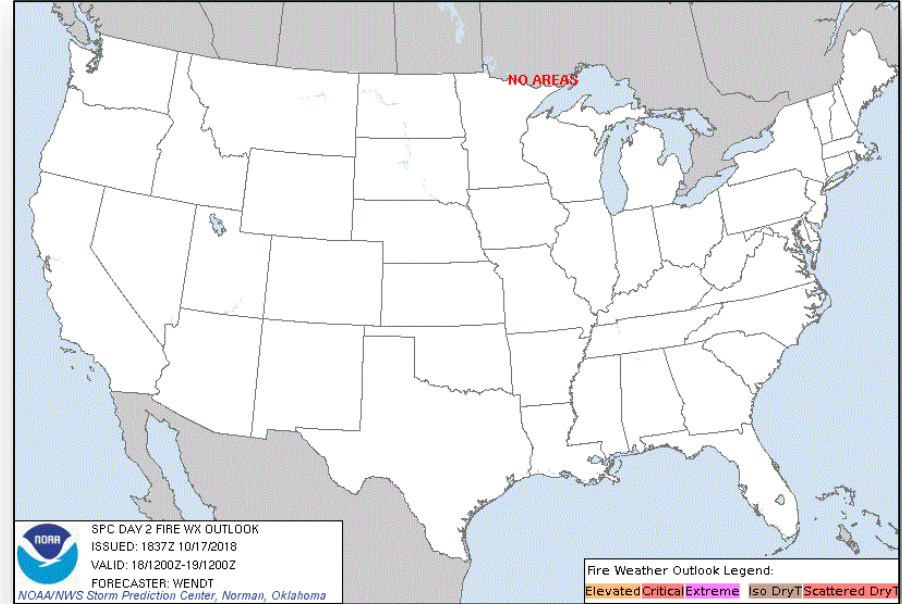
Fire Weather Outlook



FEMA



Thursday

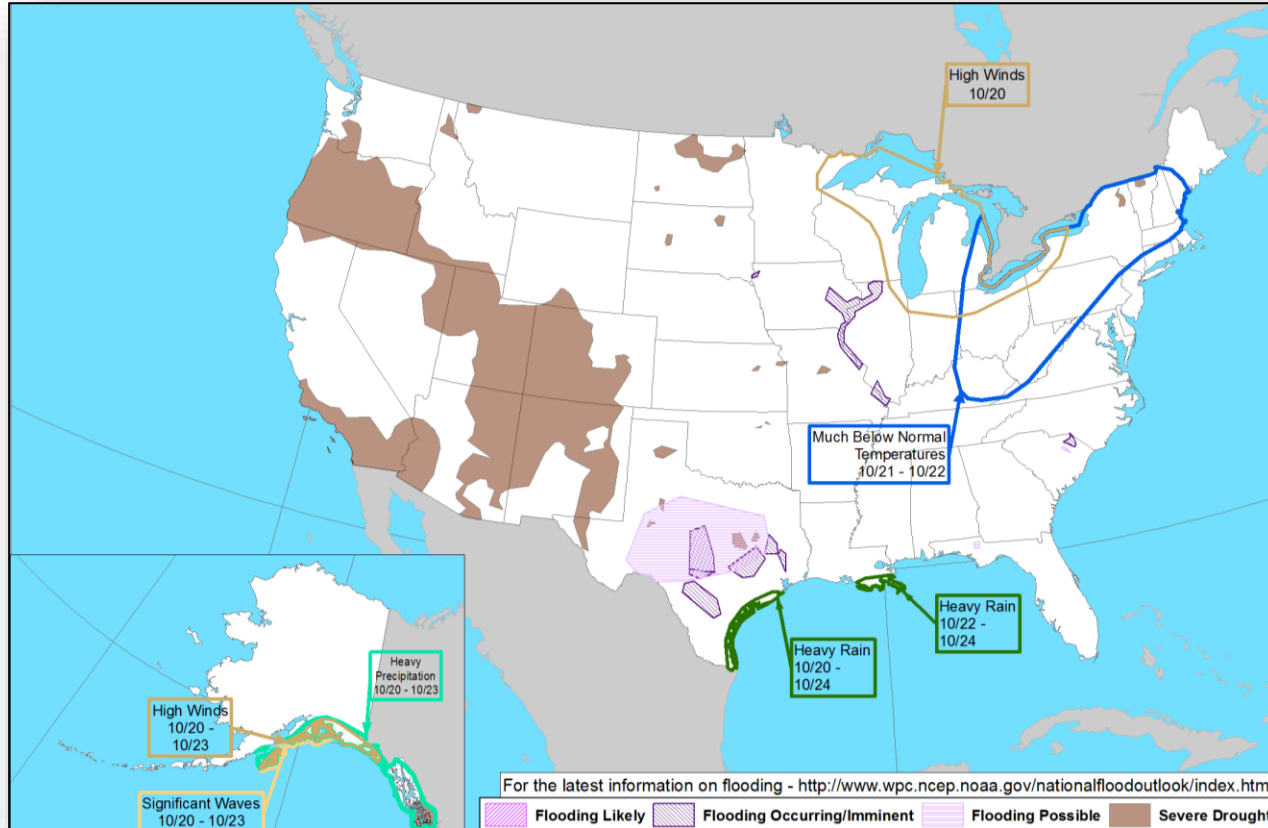


Friday

Hazards Outlook – Oct 20-24



FEMA

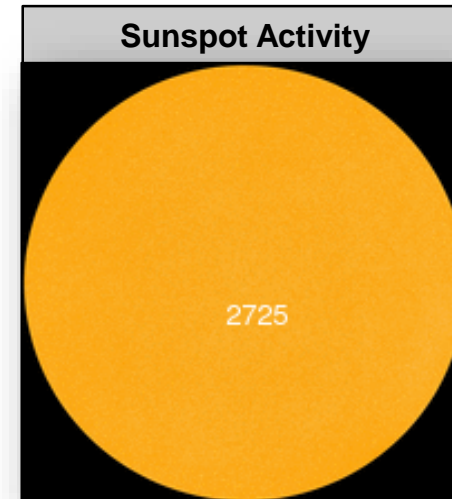
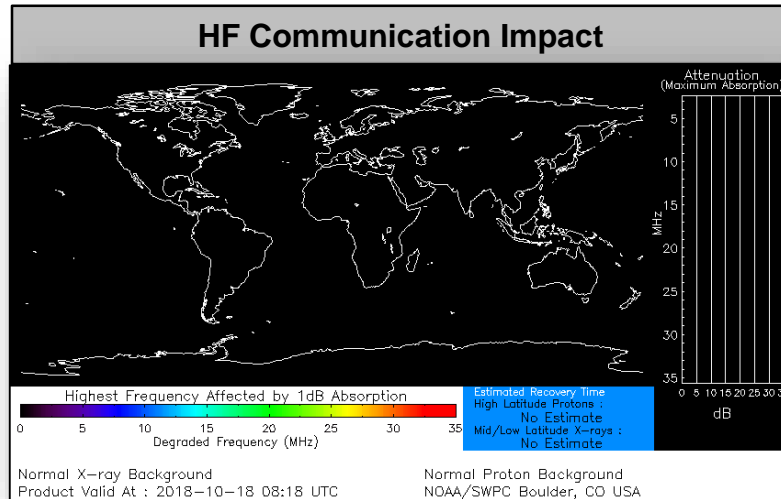


Space Weather



FEMA

	Space Weather Activity	Geomagnetic Storms	Solar Radiation	Radio Blackouts
Past 24 Hours	None	None	None	None
Next 24 Hours	None	None	None	None
For further information on NOAA Space Weather Scales refer to: http://www.swpc.noaa.gov/noaa-scales-explanation				



Joint Preliminary Damage Assessments



FEMA

Region	State / Location	Event	IA / PA	Number of Counties		Start – End
				Requested	Completed	
III	PA	Severe Weather July 21-27, 2018	IA	12	12	9/5 – 9/27
			PA	14	12	9/5 – TBD
	PA	Severe Weather August 10-15, 2018	IA	14	14	9/5 – 9/26
			PA	15	14	9/5 – TBD
	VA	Hurricane Florence September 8-21, 2018	IA	0	0	N/A
			PA	37	26	9/28 – TBD

Disaster Requests & Declarations



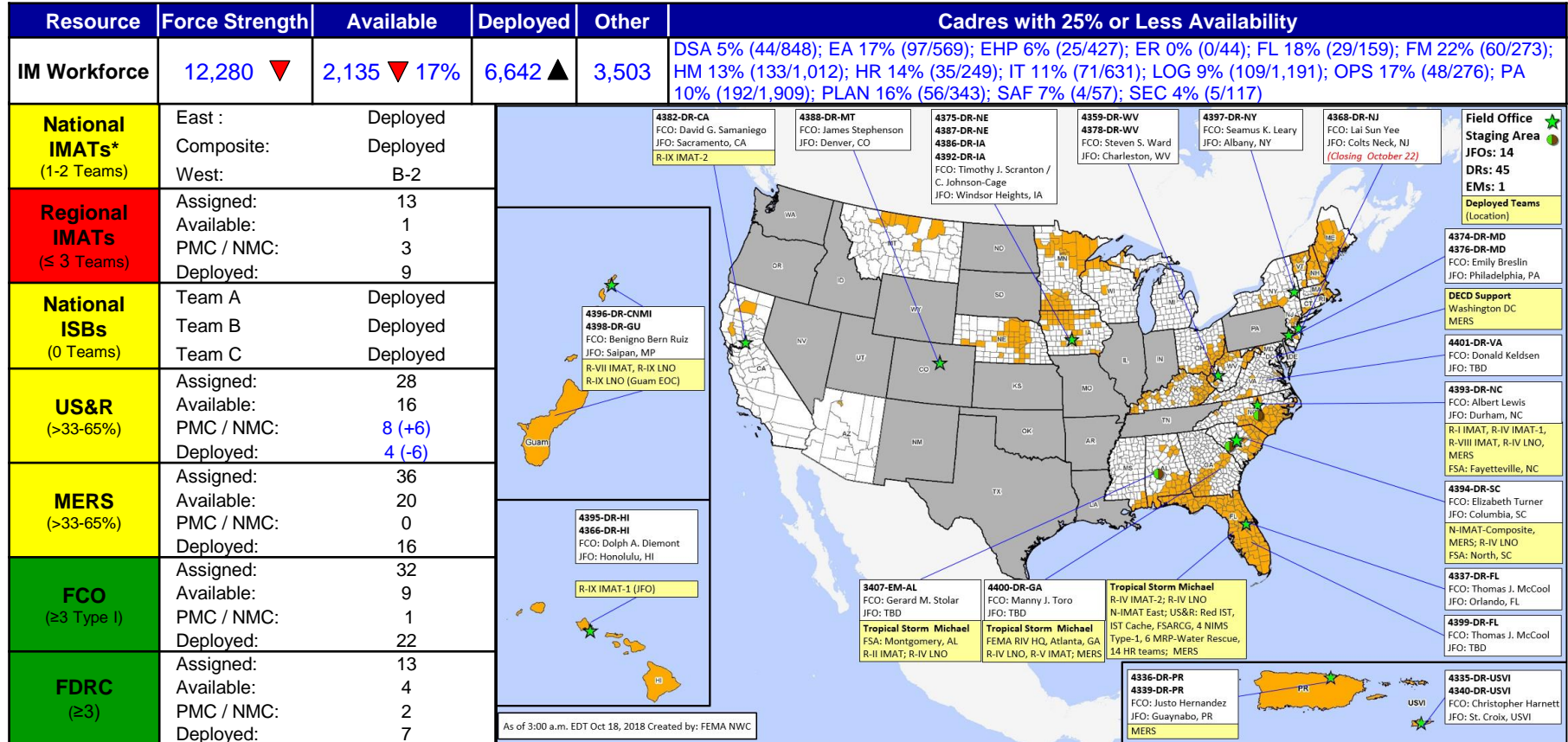
FEMA

Declaration Requests in Process					Requests APPROVED (since last report)	Requests DENIED (since last report)
3	IA	PA	HM	Date Requested	0	0
NC – DR (Appeal) Severe Storms, Flooding, Landslides, and Mudslides	X	X	X	September 19		
KS – DR Severe Storms, Straight-line Winds, and Flooding		X	X	September 25		
WI – DR Severe Storms, Tornadoes, Straight-line Winds, Flooding and Landslides	X	X	X	October 4		

Readiness – Deployable Teams and Assets



FEMA



* **B-2 Status:** Assemble ≤ 2-hrs, On Site ≤ 18-hrs; **B-48 Status:** Assemble and deploy ≤ 48hrs; **Charlie Status:** No team assemble time requirement

FEMA Readiness – Activation Teams



FEMA

Status		Activated Team	Activation Level	Activation Times	Reason / Comments
NWC (5 Teams)	Steady State				
NRCC (2 Teams)	Activated	Gold	Level III	Day shift	Hurricane Michael
HLT	Activated				
RWC / MOCs (10 Regions)	Activated	Region VI	Enhanced Watch	8:00 a.m. – 8:00 p.m., EDT	Texas Flooding
RRCCs (10 Regions)	Activated	Region IV	Level II	7:00 a.m. – Midnight, EDT	Hurricane Michael

Backup Regions: VI, VIII, & X

Great Shakeout Drill – 10/18 at 10:18



FEMA

It's important that we are prepared for emergencies. Earthquakes can happen anywhere: at work, at home, at school, or even on vacation.

The Great ShakeOut drill is an opportunity to prepare yourself, your family, and your organization by practicing protective actions to take during earthquakes and other aspects of your emergency plans. The Great ShakeOut Earthquake Drill will occur on October 18th at 10:18 am local time.

How to Participate (From www.shakeout.org)

- Plan Your Drill
 - Register at Shakeout.org/Register
 - Download a Drill Broadcast recording
- Get Prepared for Earthquakes
 - Do a "Hazard Hunt" for things that might fall
 - Create a personal disaster plan
- Share the ShakeOut
 - Invite friends and family to participate
 - Share photos and stories of your drill

Protect yourself during an Earthquake!



**Shake
Out**
TM

Register at: www.ShakeOut.org



FEMA

**FEMA's mission is helping people
before, during, and after disasters.**

Click [here](#) to subscribe to this briefing.