

The Disaster Center is dedicated to the idea that disaster mitigation is cost effective and individuals pursuing their own interest are the greatest potential force for disaster reduction.

Please consider making a small donation to the Disaster Center



When disaster mitigation is cost effective, we are on the road to bringing disasters to an end.



FEMA

Daily Operations Briefing

Saturday, October 20, 2018

8:30 a.m. EDT

Significant Activity – Oct 19-20



FEMA

Significant Events: Central Texas Flooding

Tropical Activity:

- Atlantic – No new tropical cyclones expected during the next five days
- Eastern Pacific – Tropical Storm Vicente; TD 24E
- Central Pacific – No new tropical cyclones expected during the next five days
- Western Pacific – No activity affecting U.S. interests

Significant Weather:

- Heavy rain and flooding possible – TX
- Elevated Fire Weather Conditions – Southern CA

Declaration Activity:

- Major Disaster Declaration approved – Kansas

Central Texas Flooding



FEMA

Situation:

Showers and storms capable of producing localized flooding will persist across Texas through the weekend, with a focus of heavy rainfall along the middle and southern Texas coast. Heavy rain, at times, in central Texas will exacerbate ongoing flooding.

Safety and Security: No SAR missions currently taking place; assets staged and on standby if needed

Food, Water, Sheltering:

- 5 (-1) shelters / 2 (-19) Occupants (ARC Midnight Shelter Count, 5:20 a.m. October 20)
- Boil water advisories in effect for Kingsland, Marble Falls, smaller systems in Burnet County
- Llano, Marble Falls, Kingsland and Granite Shoals water systems damaged

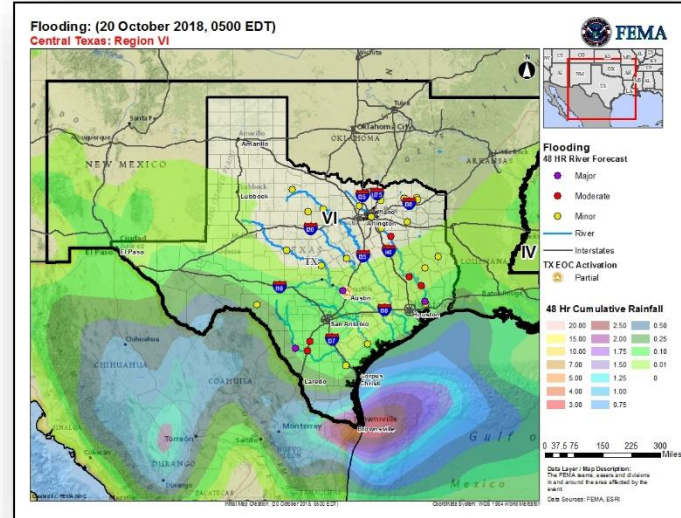
Communication: Cell service is intermittent in the Kingsland-Llano county area

Transportation: 55 (+5) secondary roads remain closed

Hazardous Waste: Kingsland and Marble Falls are reporting waste water lift stations are under water; emergency restriction-limited use until further notice

State/Local Response:

- TX EOC at Monitoring
- The Governor declared a State of Emergency for 54 counties



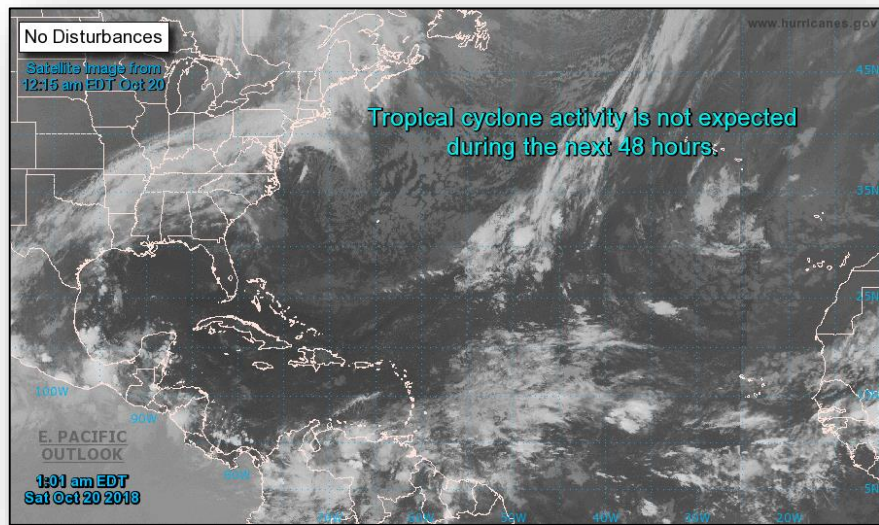
FEMA Response:

- Region VI RWC at Enhanced Watch (day shift)
- 4 LNOs deployed to TX EOC
- 6 PA PDA and 4 IA PDA teams on standby
- FEMA HQ NWC continues to monitor
- No requests for FEMA assistance; no unmet needs

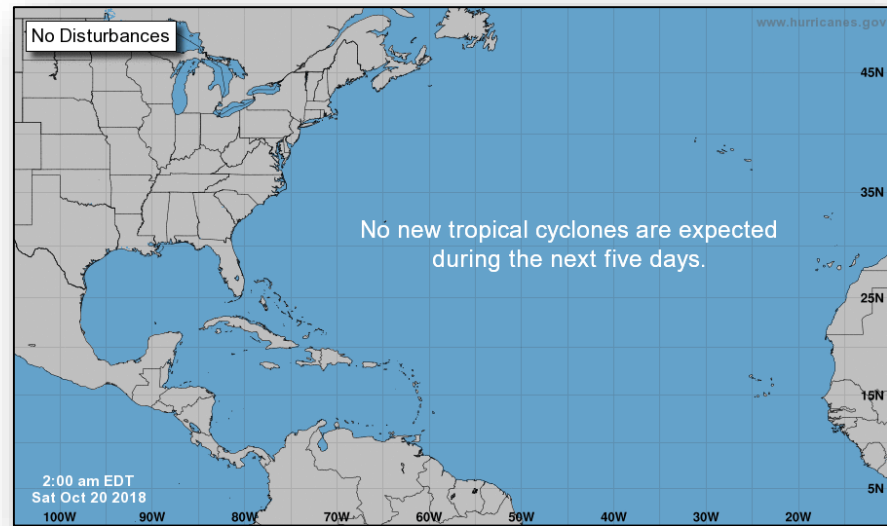
Tropical Outlook – Atlantic



FEMA



48 Hour Outlook



5 Day Outlook

Tropical Outlook – Eastern Pacific



FEMA

Tropical Storm Vicente (Advisory #4, as of 5:00 a.m. EDT)

- Located 80 miles SW of Tapachula, Mexico
- Moving WNW at 7 mph
- Maximum sustained winds 40 mph
- Slow strengthening expected next few days
- Tropical-storm-force winds extend out 25 miles
- No coastal watches or warnings in effect



Tropical Depression Twenty-Four E (Advisory #2 as of 5:00 a.m. EDT)

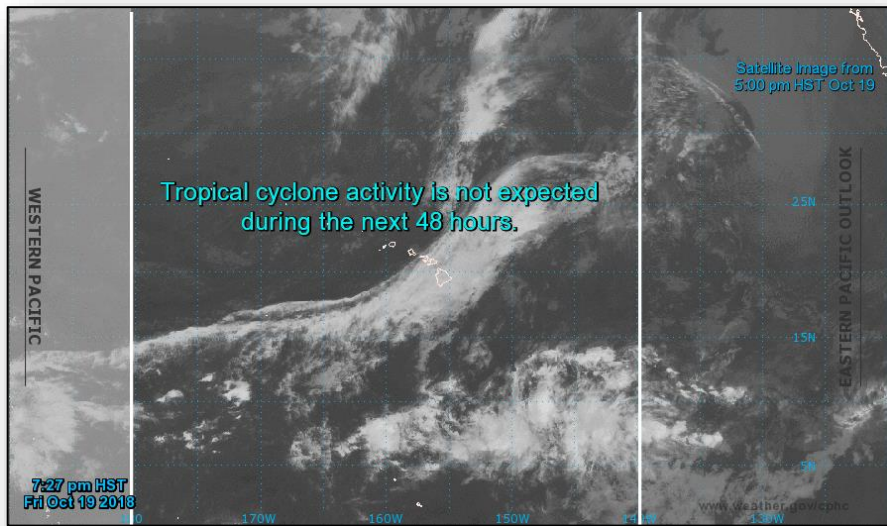
- About 270 miles S of Manzanillo, Mexico
- Moving W at 9 mph
- Maximum sustained winds 35 mph
- Steady strengthening forecast during next few days



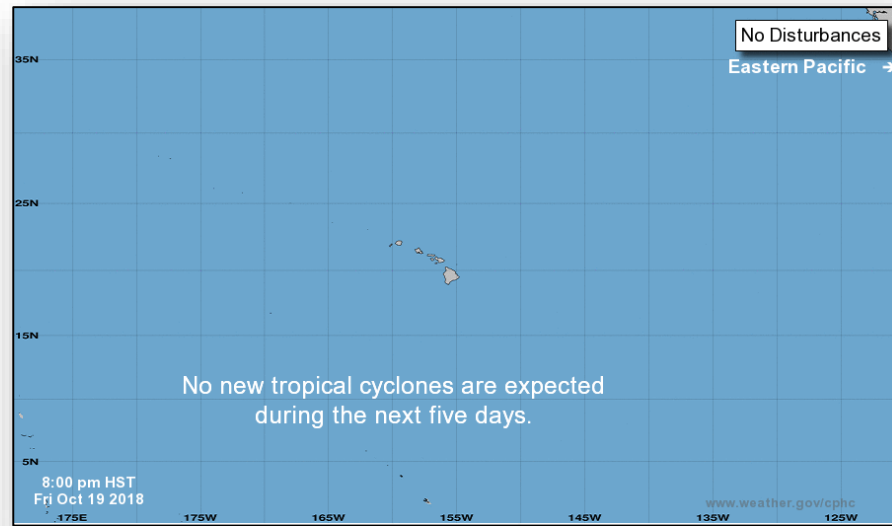
Tropical Outlook – Central Pacific



FEMA



48 Hour Outlook



5 Day Outlook

Tropical Outlook – Western Pacific



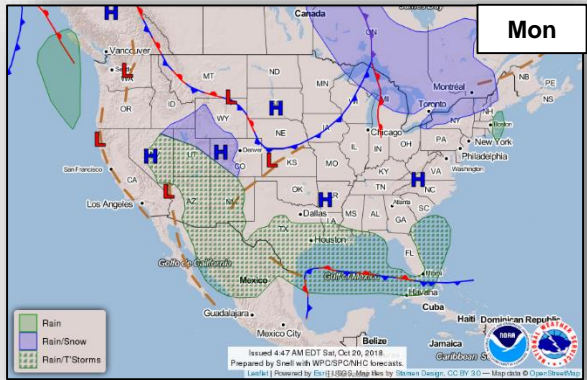
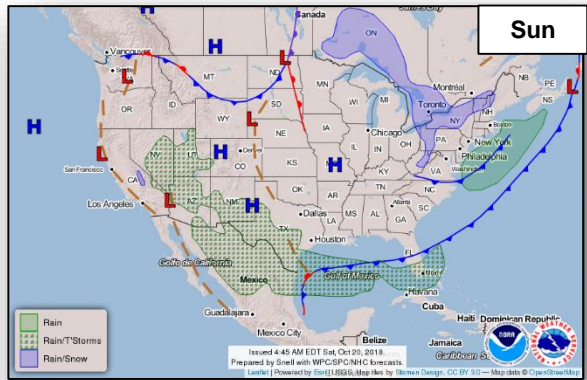
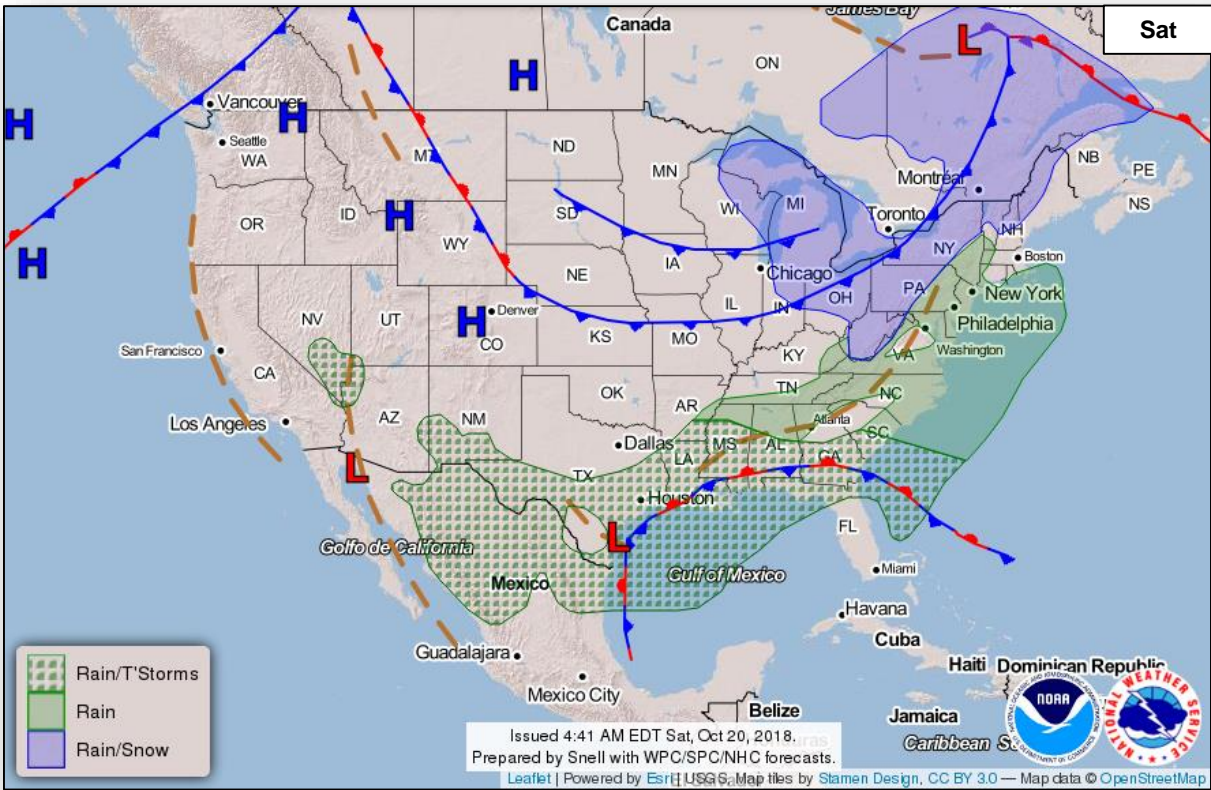
FEMA

Invest 97W (as of 2:00 a.m. EDT)

- About 1,300 miles ESE of Guam
- Maximum surface winds 12 – 17 mph
- Expected to intensify over next few days
- Potential for development next 24 hours: Medium



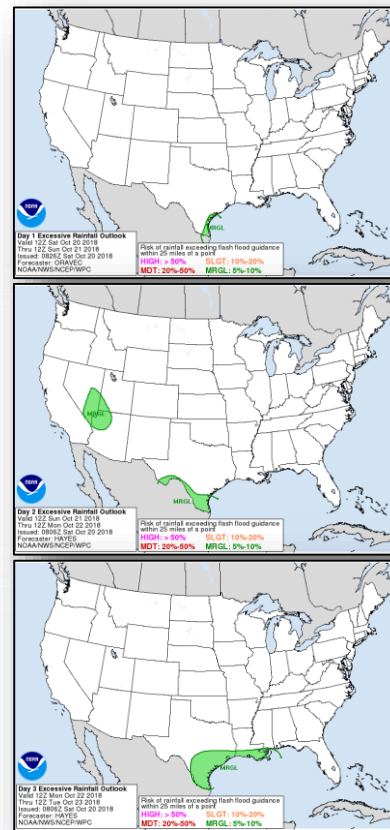
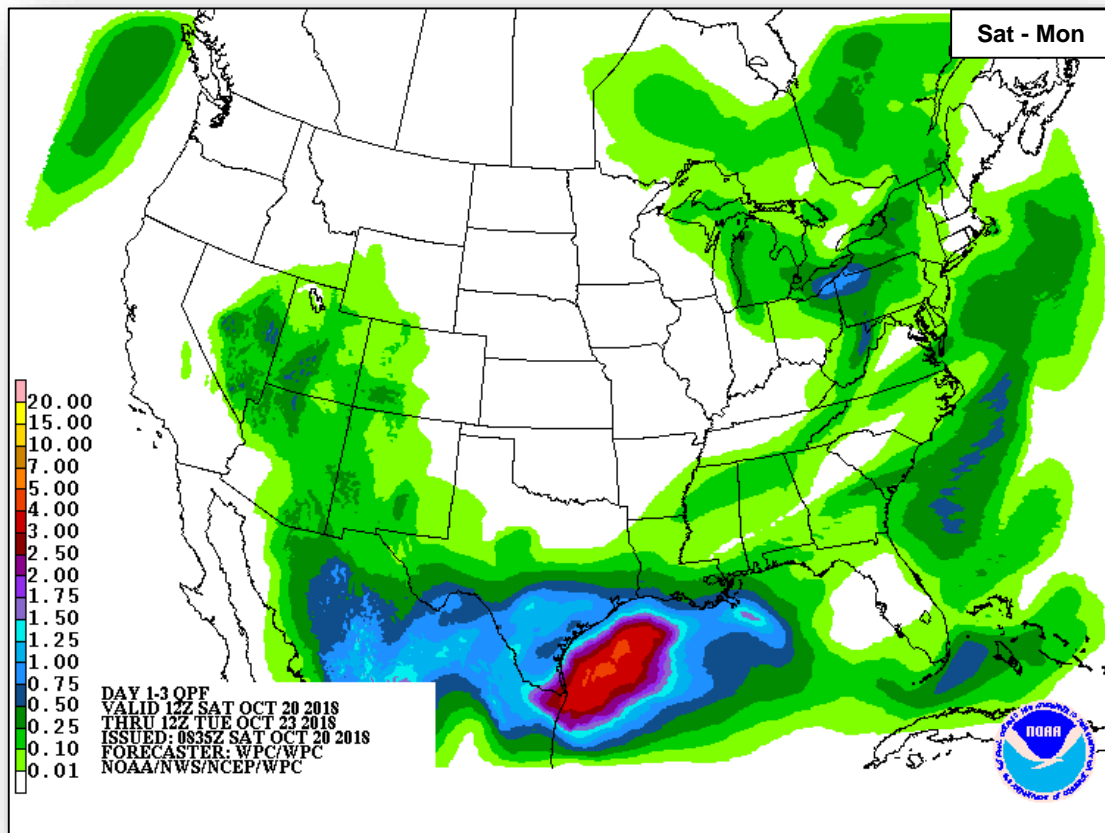
National Weather Forecast



Precipitation / Excessive Rainfall Forecast



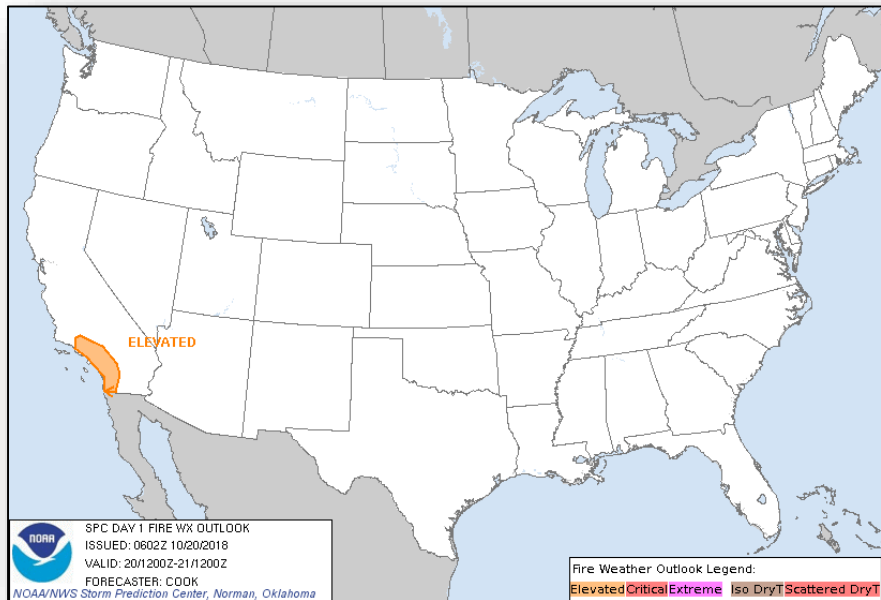
FEMA



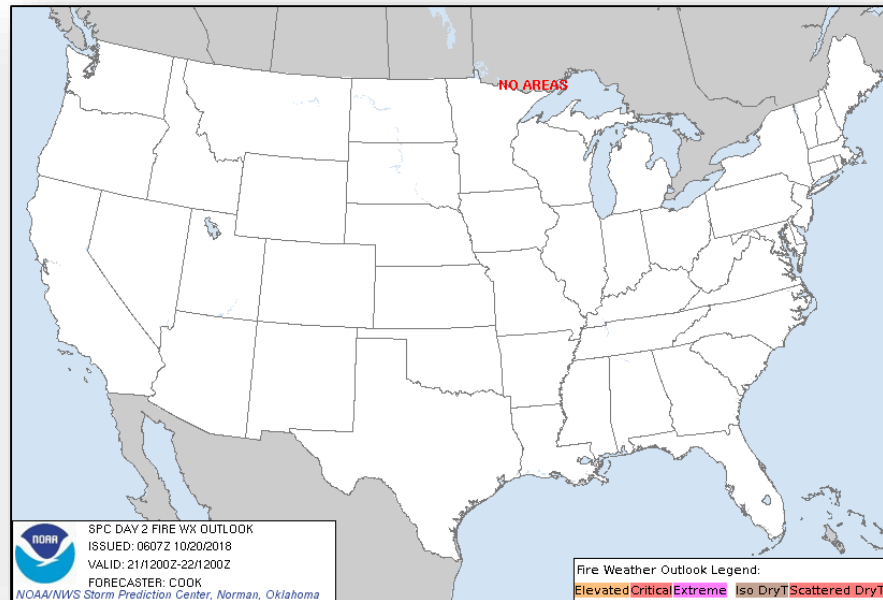
Fire Weather Outlook



FEMA



Saturday

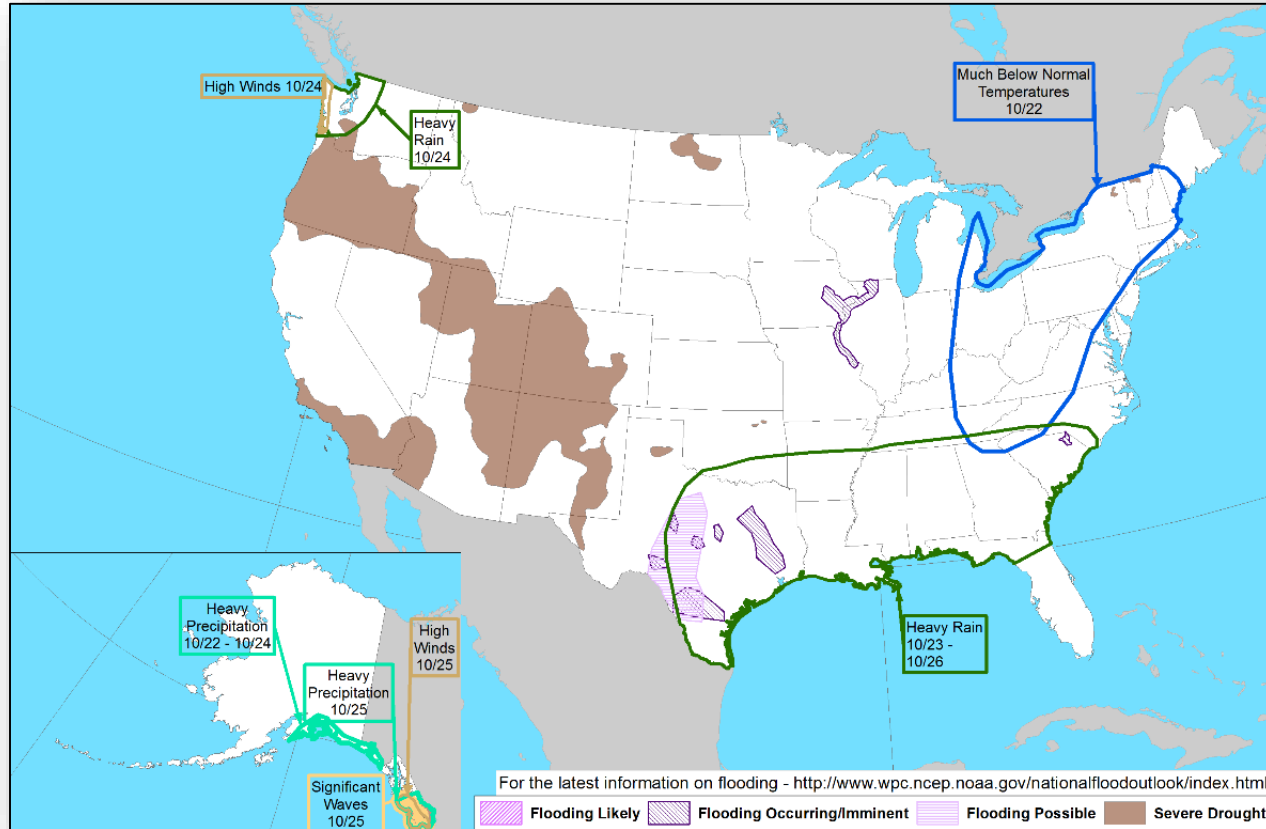


Sunday

Hazards Outlook – Oct 22-26



FEMA

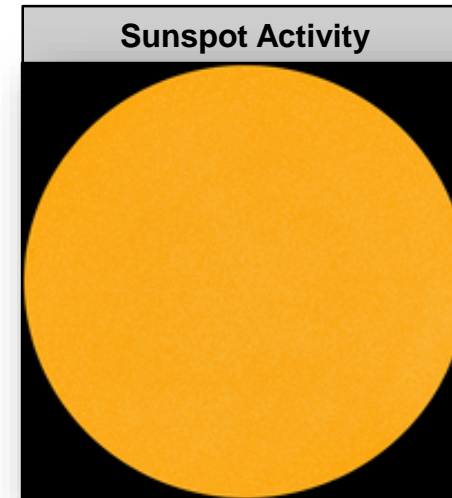
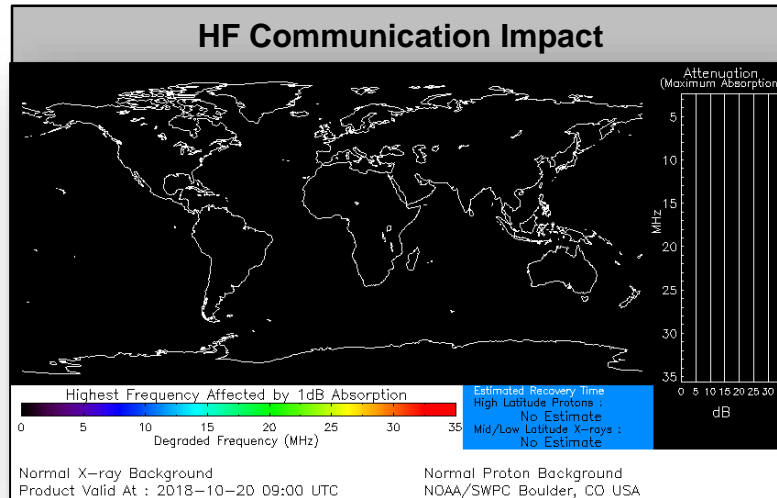


Space Weather



FEMA

	Space Weather Activity	Geomagnetic Storms	Solar Radiation	Radio Blackouts
Past 24 Hours	None	None	None	None
Next 24 Hours	None	None	None	None
For further information on NOAA Space Weather Scales refer to: http://www.swpc.noaa.gov/noaa-scales-explanation				



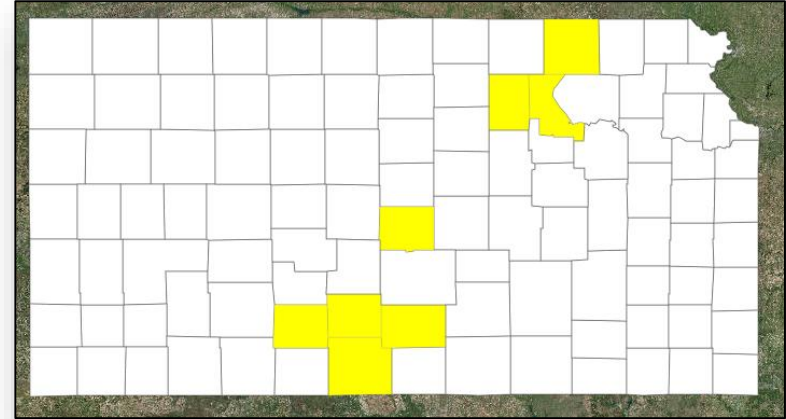
Declaration Approved



FEMA

Kansas

- Major Disaster Declaration approved October 19, 2018 for Kansas
- For severe storms, straight-line winds, and flooding that occurred September 1-8, 2018
- Provides:
 - Public Assistance for eight counties
 - Hazard Mitigation statewide
- FCO is Paul Taylor



■ PA

Disaster Requests & Declarations



FEMA

Declaration Requests in Process					Requests APPROVED (since last report)	Requests DENIED (since last report)
1	IA	PA	HM	Date Requested	1	0
NC – DR (Appeal) Severe Storms, Flooding, Landslides, and Mudslides	X	X	X	September 19		
KS – DR Severe Storms, Straight-line Winds, and Flooding		X	X	September 25	Declared October 19, 2018	

Joint Preliminary Damage Assessments



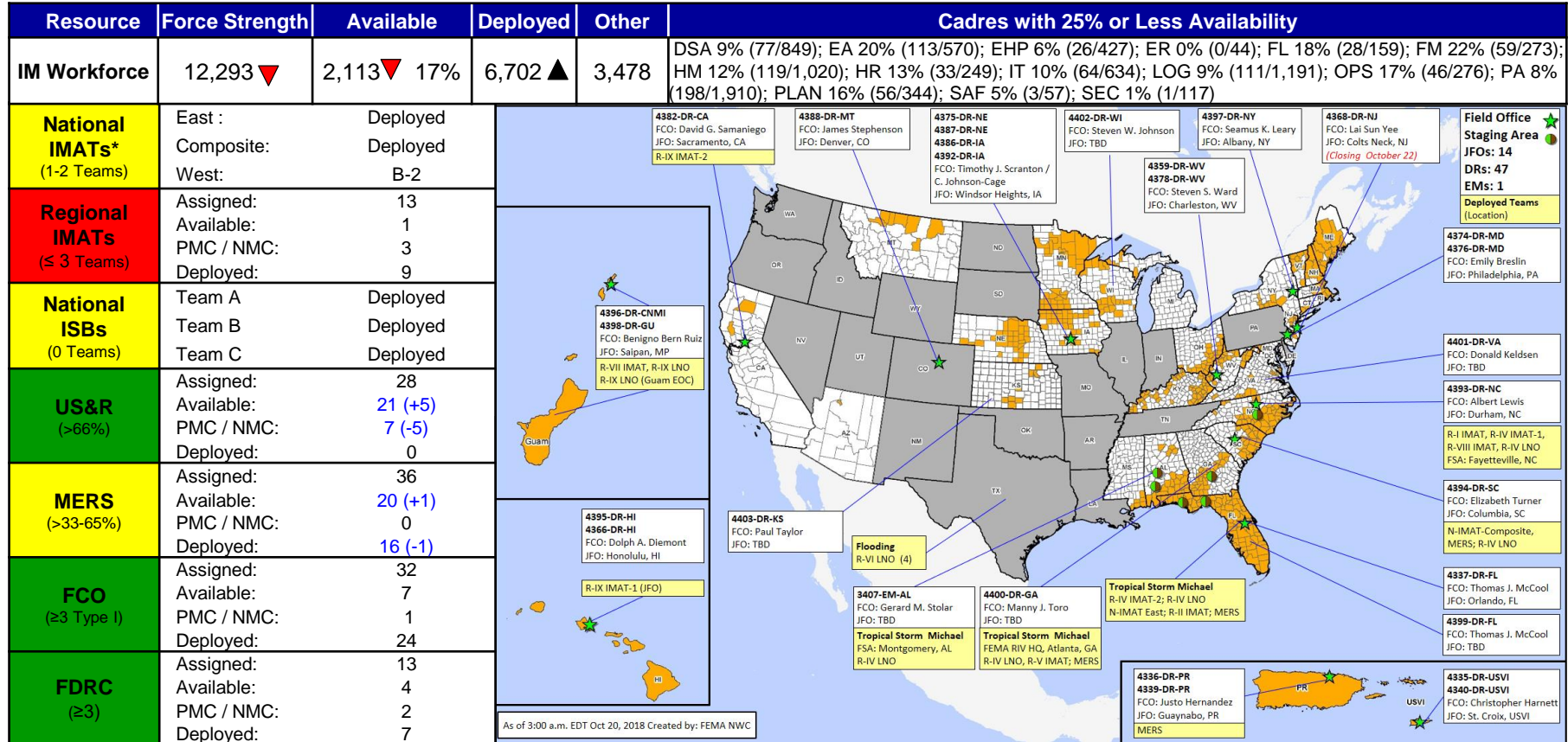
FEMA

Region	State / Location	Event	IA / PA	Number of Counties		Start – End
				Requested	Completed	
III	PA	Severe Weather July 21-27, 2018	IA	12	12	9/5 – 9/27
			PA	14	14	9/5 – 10/19
	PA	Severe Weather August 10-15, 2018	IA	14	14	9/5 – 9/26
			PA	15	10	9/5 – TBD
IV	AL	Hurricane Michael October 8, 2018 and continuing	IA	4	0	10/23 - TBD
			PA	6	0	10/23 - TBD
IX	Tohono O'odham Nation (AZ)	Flooding September 30 – October 2, 2018	IA	1	0	10/23 – TBD
			PA	1	0	10/23 - TBD

Readiness – Deployable Teams and Assets



FEMA



* **B-2 Status:** Assemble ≤ 2-hrs, On Site ≤ 18-hrs; **B-48 Status:** Assemble and deploy ≤ 48hrs; **Charlie Status:** No team assemble time requirement

FEMA Readiness – Activation Teams



FEMA

Status		Activated Team	Activation Level	Activation Times	Reason / Comments
NWC (5 Teams)	Steady State				
NRCC (2 Teams)	Not Activated				
HLT	Activated				
RWC / MOCs (10 Regions)	Activated	Region VI	Enhanced Watch	8:00 a.m. – 8:00 p.m. EDT	Texas Flooding
RRCCs (10 Regions)	Activated	Region IV	Level III	8:00 a.m. – 6:00 p.m. EDT	Hurricane Michael

Backup Regions: **VI, VIII, & X**



FEMA

**FEMA's mission is helping people
before, during, and after disasters.**

Click [here](#) to subscribe to this briefing.