

The Disaster Center is dedicated to the idea that disaster mitigation is cost effective and individuals pursuing their own interest are the greatest potential force for disaster reduction.

Please consider making a small donation to the Disaster Center



When disaster mitigation is cost effective, we are on the road to bringing disasters to an end.



FEMA

Daily Operations Briefing

Friday, October 26, 2018

8:30 a.m. EDT

Significant Activity – Oct 25-26



FEMA

Significant Events: Super Typhoon Yutu

Tropical Activity:

- Atlantic – Disturbance 1: High (90%)
- Eastern Pacific – Disturbance 1: Low (20%)
- Central Pacific – No new tropical cyclones expected during the next five days
- Western Pacific – Super Typhoon Yutu (CAT 5)

Significant Weather:

- Severe thunderstorms possible – coastal Carolinas
- Freezing rain possible – Northeast
- Heavy rainfall – coastal Mid-Atlantic
- Elevated fire weather – southern CA

Declaration Activity:

- Request for Expedited Major Disaster Declaration – Commonwealth of Northern Mariana Islands (Typhoon Yutu)
- Request for Major Disaster Declaration – Alabama (Hurricane Michael)
- Amendment No. 2 to FEMA-4400-DR-GA (adds 7 counties for IA)
- Amendment No. 9 to FEMA-4393-DR-NC (adds 3 counties for IA)

Tropical Cyclone Yutu

CNMI



FEMA

Safety and Security:

- Saipan: 1 confirmed fatality
- CNMI Attorney General issued consumer alert on price gouging related to post-storm services

Food, Water, Sheltering:

- Establishing 5 points of distribution (PODs) on Saipan to provide water and humanitarian daily rations (HDRs) on October 28
- Shelters/Occupants:
 - Saipan 12 / 893 (+340), 6 shelters at capacity; Tinian 2 (-1) / 34 (-11); Rota 2 / 79

Health and Medical:

- CNMI: Public Health Emergency declared to release resources to respond to disaster
- Saipan: the only hospital on the island is operational on generator power with 4 days fuel supply; dialysis center has resumed operations
- Tinian: the only medical facility on the island has infrastructure compromised but is operational on generator power with 3 days fuel supply
- Rota: Rota Health Center operational on generator power, no reported damaged
- HHS deploying 1 LNO, 1 Incident Management Team Logistics Officer, and Health and Medical Task Force-Oahu

Energy:

- CNMI: 100% of customers without electric grid power (19k on Saipan, 1k on Tinian, 1k on Rota)
- Saipan: 9 out of 9 power feeders are down; 2 out of 3 power generating plants require drying and testing before bringing back on-line, 1 plant available for service; island is relying on generator power
- Tinian: 4 out of 4 power feeders down; power plant compromised, distribution system completely destroyed; island is relying on generators
- Rota: 3 out of 3 power feeders are online
- Deploying generators to Saipan from DC Guam
- CNMI: Commonwealth Utilities Corporation estimates that 21 days of fuel is currently available on the islands; CNMI relies on petroleum products for nearly all energy needs, supplied once a week by tanker through Saipan port, Tinian and Rota by barge

Communication:

- CNMI: Significant damage to cell towers throughout the islands; telecommunications services have only one provider
- Saipan: 11 of 11 cell towers on generator power, fuel plan is being executed by CNMI
- Exchange connection between islands is on generator power with 96 hour capacity
- CNMI Public Safety Radio System is online

Transportation:

- Ports: Saipan and Tinian remain closed pending assessment; all ports in Rota re-opened
- Airports:
 - Saipan: significant damage, most flights cancelled, humanitarian and military flights only; suitcase tower needed to facilitate air traffic control is operational
 - Tinian: open with flights scheduled to begin October 27
 - Rota: open
- Road debris assessment and clearance ongoing on Saipan and Rota; assessment team scheduled to begin work on Tinian on October 27

Hazardous Waste:

- Solid Waste facility in Puerto Rico, Saipan open for green waste, metals, and white good disposal
- As Gonno facility in Saipan expected to re-open on October 27; Marpi transfer station in Saipan requires removal of lines and power poles before re-opening

State/Local Response

- CNMI EOC at Full Activation (24/7), COR I

FEMA HQ/Federal Response

- Emergency Declaration FEMA-3408-EM-CNMI approved October 23
- FEMA Region IX RWC at Steady State, continues to monitor
 - FEMA Region IX IMAT-2 and select ESFs deployed to Saipan
 - LNOs in Guam, Rota and Saipan
- FEMA Region VII IMAT deployed to CNMI
- FEMA NRCC Response Operations Cell (ROC) activated (24/7)
- FEMA HQ ISB team and MERS assets deployed
- HHS: Federal Health Coordinating Officer, DMAT, and IMT deployed
- USACE: 249th Engineer BN 'Prime Power' deployed

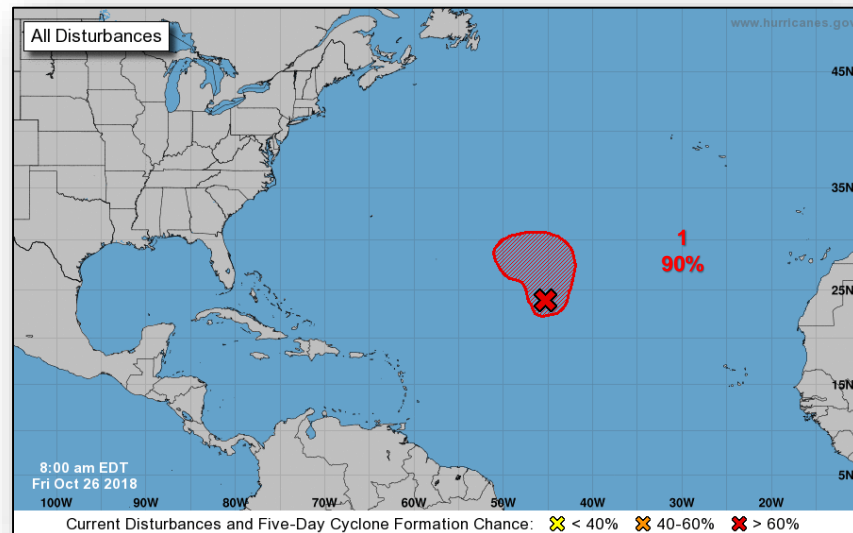
Tropical Outlook – Atlantic



FEMA

Disturbance 1 (as of 8:00 a.m. EDT)

- 1200 miles ENE of northern Leeward Islands
- A tropical or subtropical storm is likely to form later today or tonight
- Formation chance through 48 hours: High (90%)
- Formation chance through 5 days: High (90%)



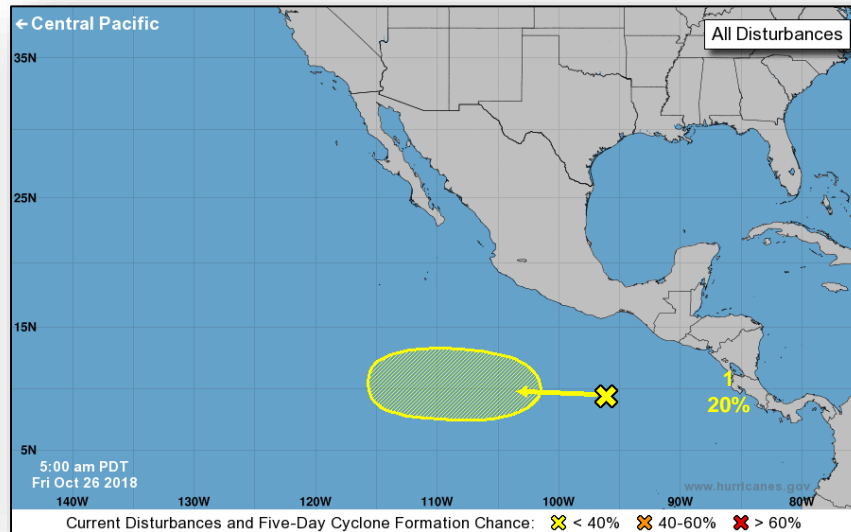
Tropical Outlook – Eastern Pacific



FEMA

Disturbance 1 (as of 8:00 a.m. EDT)

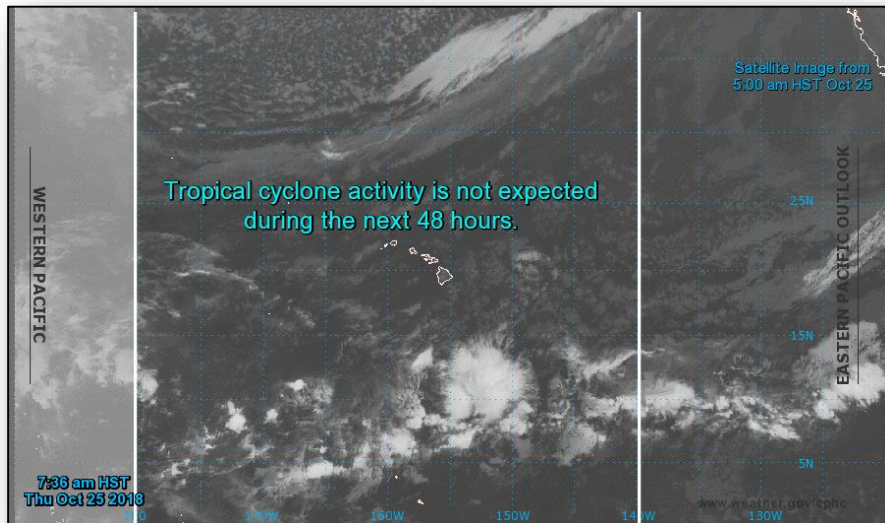
- Several hundred miles S of Gulf of Tehuantepec
- Some gradual development is possible early next week
- Formation chance through 48 hours: Low (near 0%)
- Formation chance through 5 days: Low (20%)



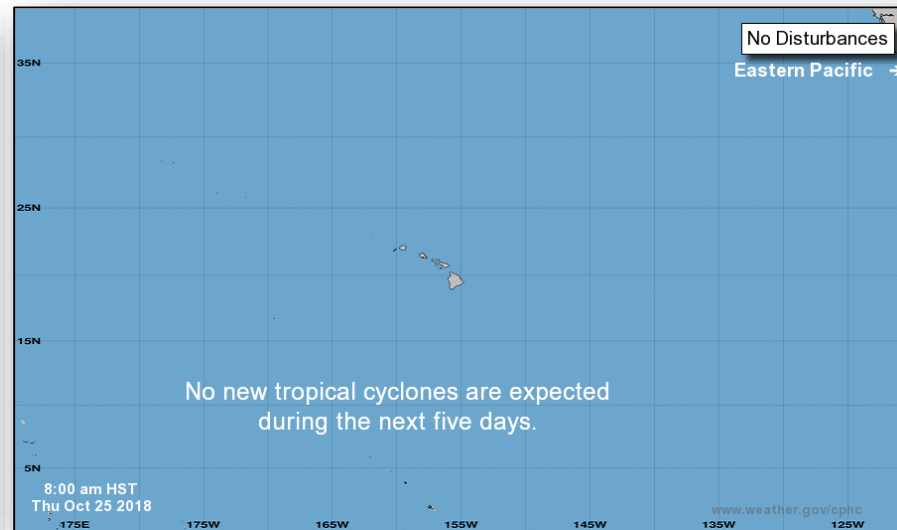
Tropical Outlook – Central Pacific



FEMA



48 Hour Outlook



5 Day Outlook

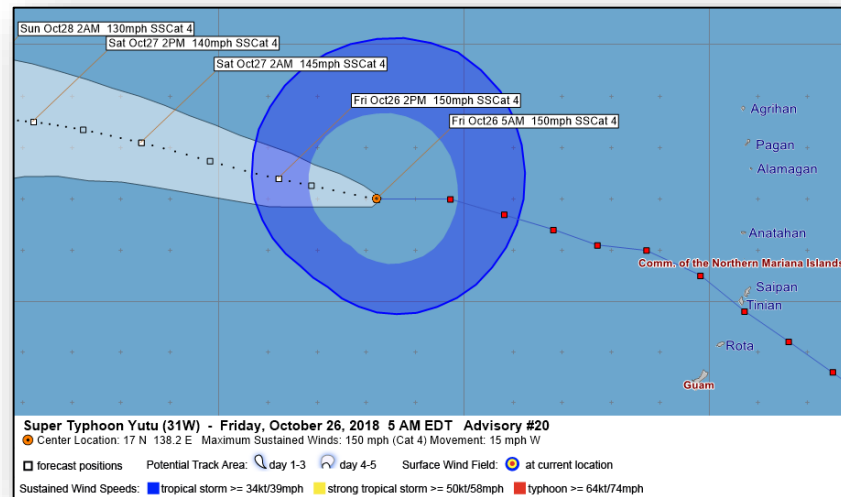
Tropical Outlook – Western Pacific



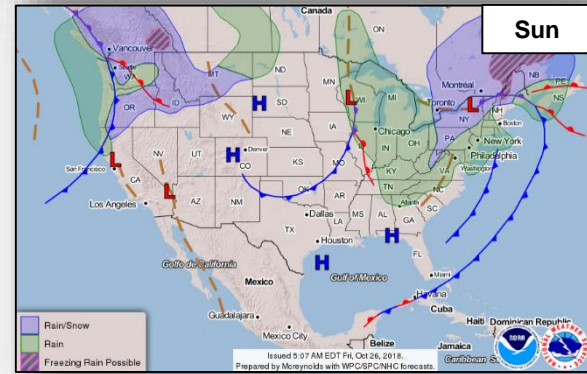
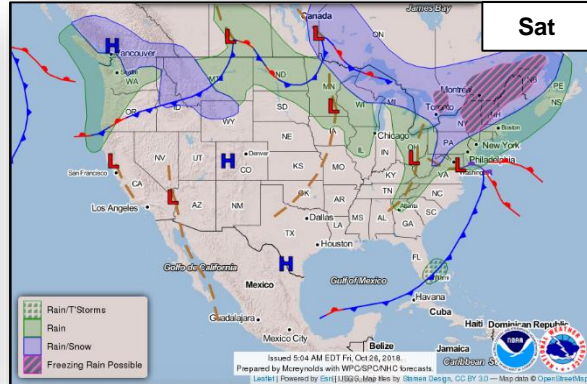
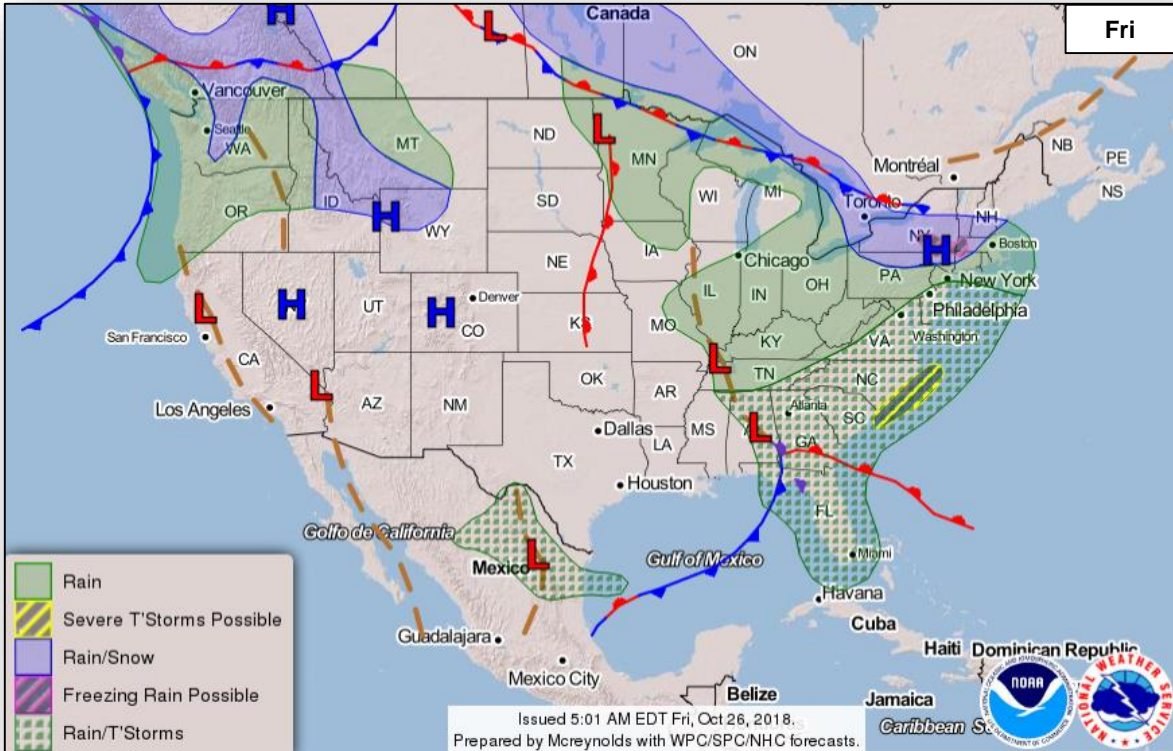
FEMA

Super Typhoon Yutu (CAT 4) (Advisory #20 as of 5:00 a.m. EDT) **FINAL**

- 510 miles WNW of Tinian, 500 miles WNW of Guam
- Moving W at 15 mph
- Maximum sustained winds 150 mph
- Typhoon-force winds extend 70 miles
- Tropical storm force winds extend 230 miles
- All typhoon watches and warnings have been cancelled



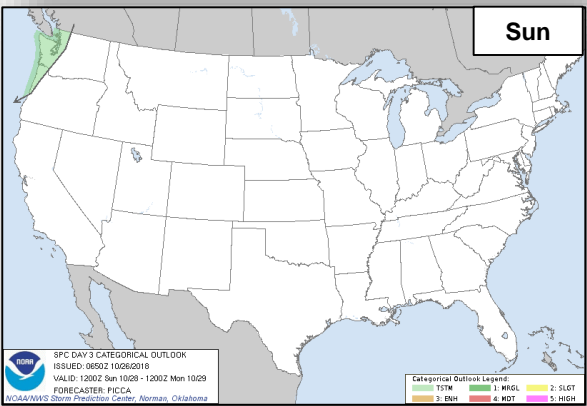
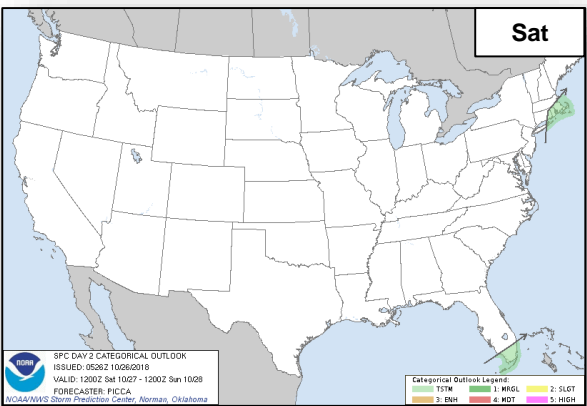
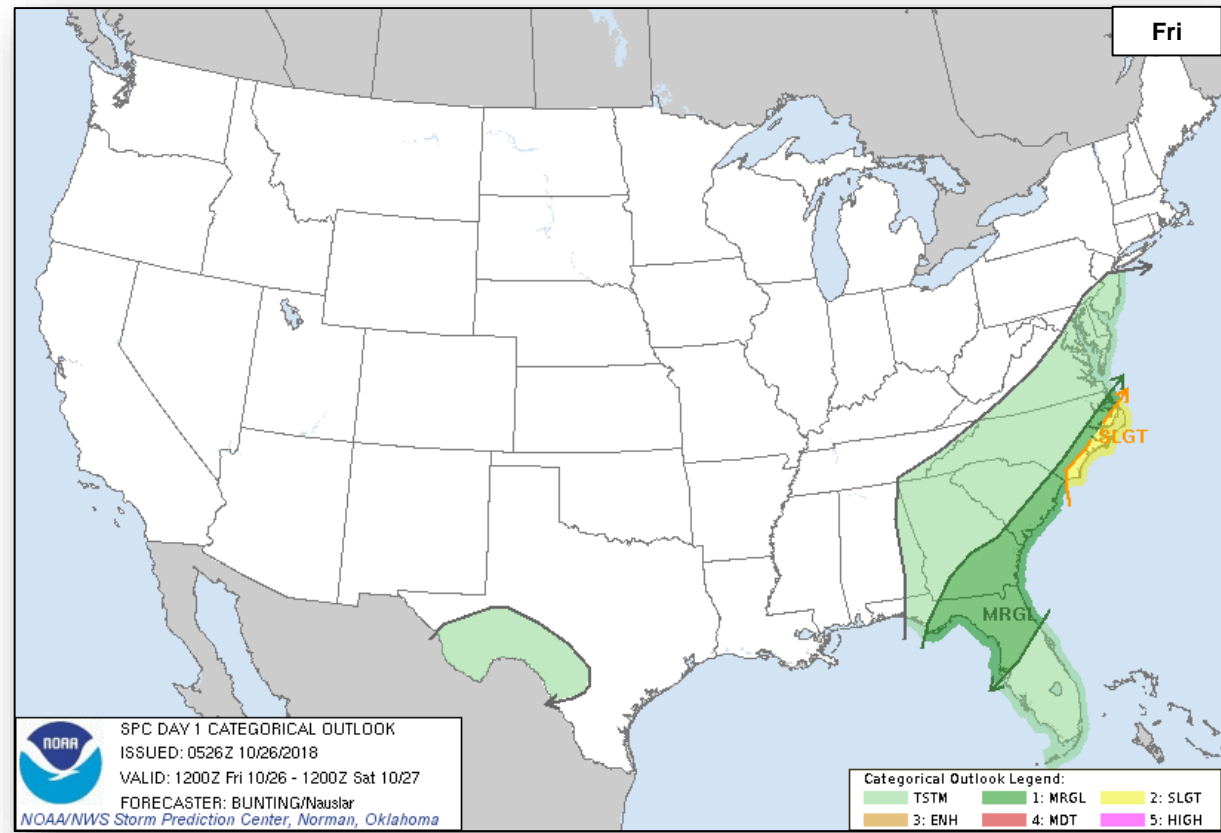
National Weather Forecast



Severe Weather Outlook



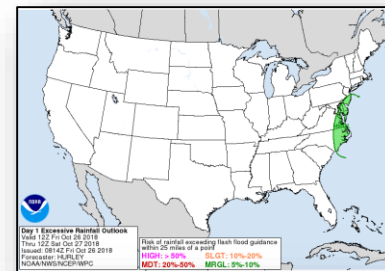
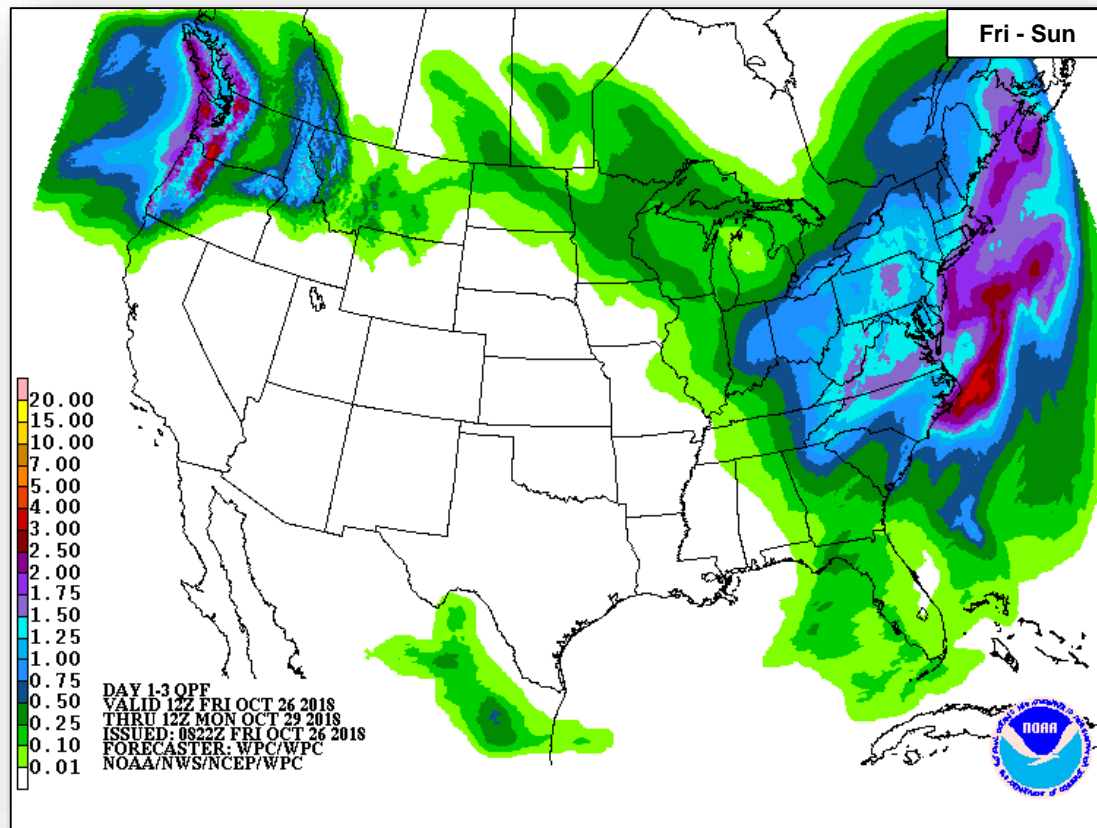
FEMA



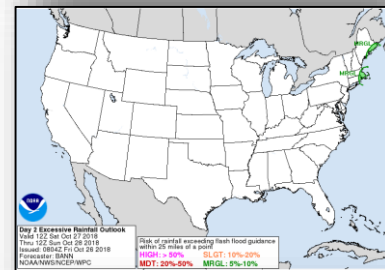
Precipitation / Excessive Rainfall Forecast



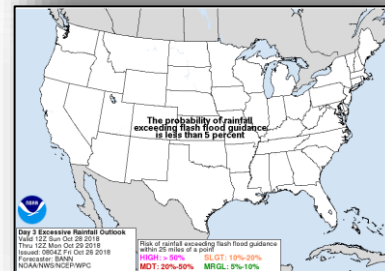
FEMA



Fri



Sat

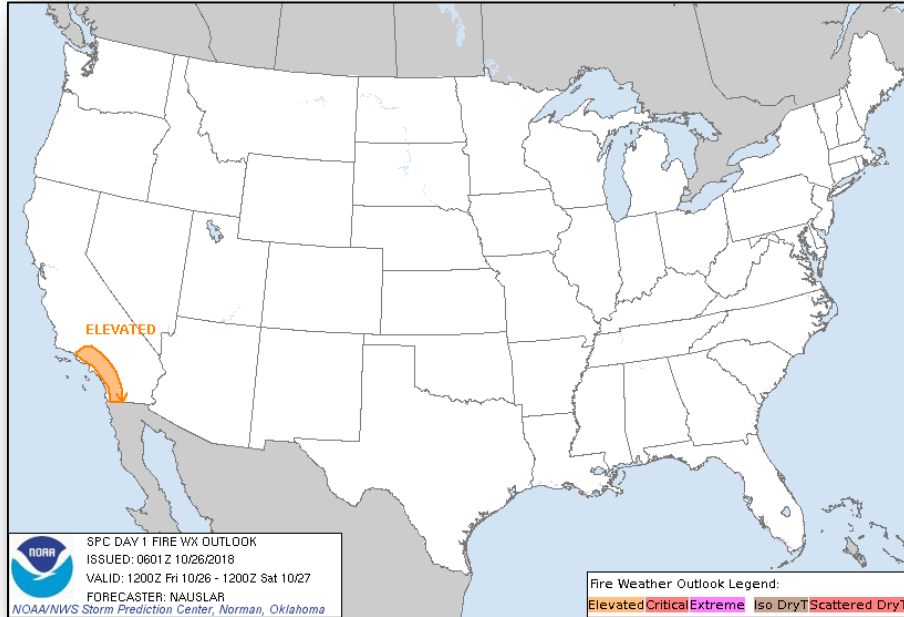


Sun

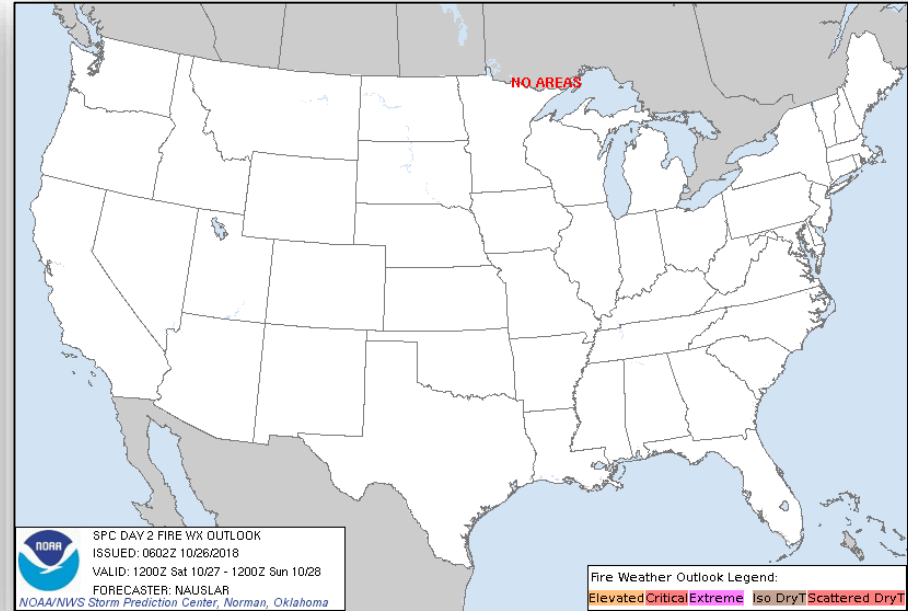
Fire Weather Outlook



FEMA



Friday

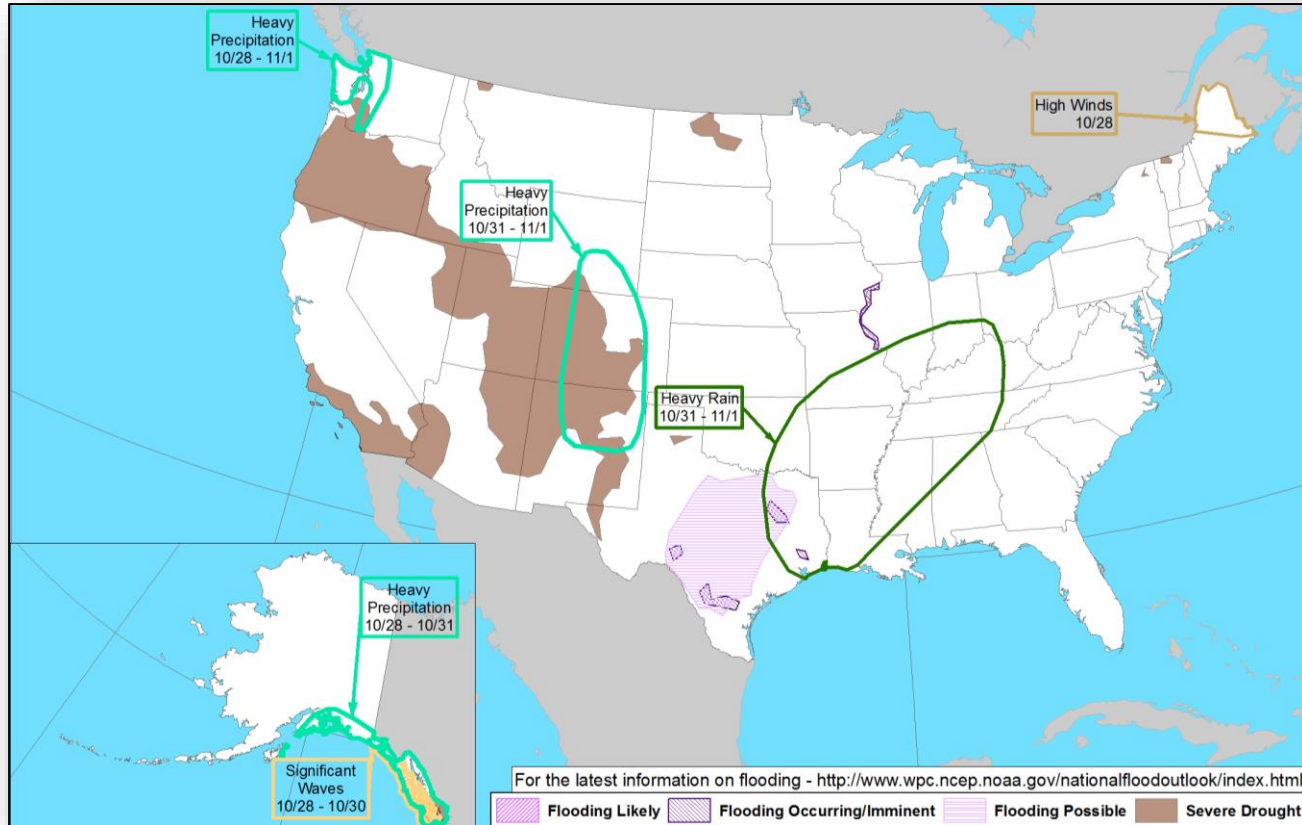


Saturday

Hazards Outlook – Oct 28 – Nov 01



FEMA



Joint Preliminary Damage Assessments



FEMA

Region	State / Location	Event	IA / PA	Number of Counties		Start – End
				Requested	Completed	
III	VA	Hurricane Michael	IA	0	0	NA
			PA	29	0	10/29 – TBD
V	MN	Flooding October 10, 2018	IA	0	0	NA
			PA	1	0	10/29 – 10/30
VI	TX	Riverine Flooding October 16, 2018 and continuing	IA	3	0	TBD
			PA	1	1	10/24 – TBD
IX	Tohono O'odham Nation (AZ)	Flooding September 30 – October 2, 2018	IA	1	0	10/23 – TBD
			PA	1	0	10/23 - TBD

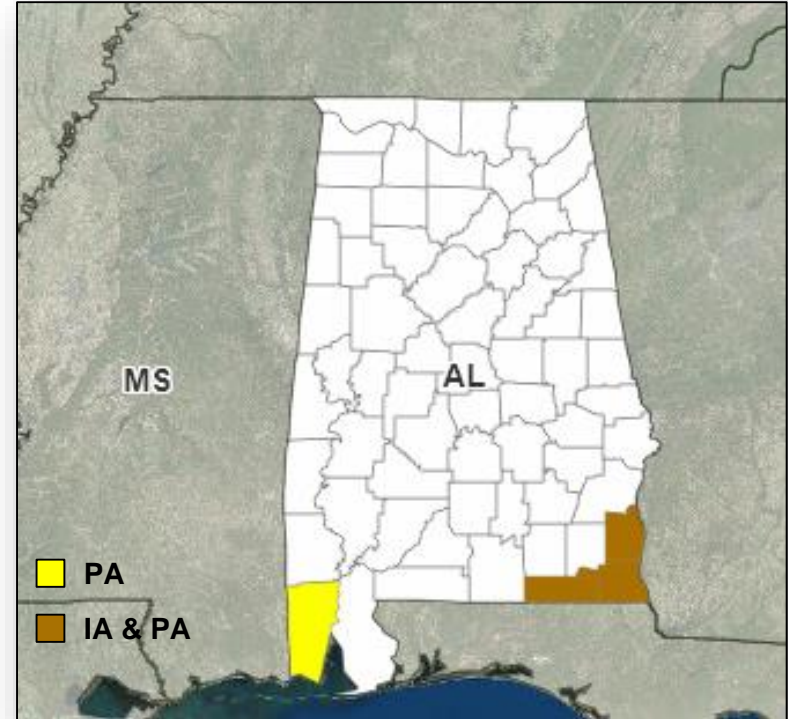
Declaration Request



FEMA

Alabama

- The Governor requested a Major Disaster Declaration on October 25, 2018 for the State of Alabama
- For Hurricane Michael during the period of October 10-13, 2018
- Requesting:
 - Individual Assistance for three counties
 - Public Assistance for four counties
 - Hazard Mitigation statewide



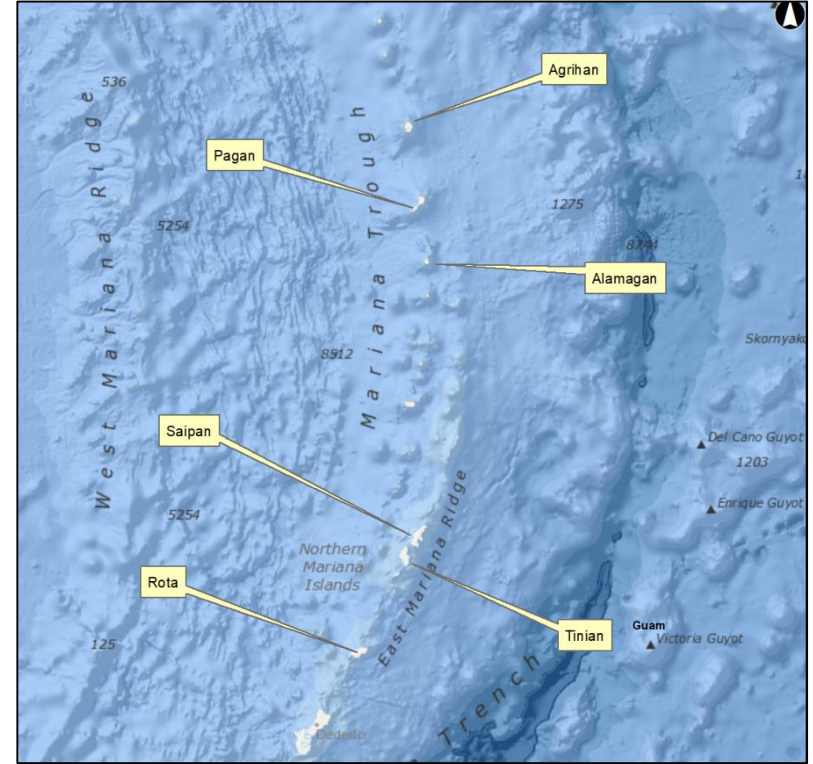
Declaration Request



FEMA

Commonwealth of Northern Mariana Islands

- The Governor requested an expedited Major Disaster Declaration on October 26, 2018 for the Commonwealth of the Northern Mariana Islands
- For Typhoon Yutu during the period of October 24, 2018 and continuing
- Requesting:
 - Individual Assistance for 6 islands
 - Public Assistance, including direct Federal assistance for 6 islands
 - Hazard Mitigation for the entire commonwealth



Disaster Requests & Declarations



FEMA

Declaration Requests in Process					Requests APPROVED (since last report)	Requests DENIED (since last report)
3	IA	PA	HM	Date Requested	0	0
NC – DR (Appeal) Severe Storms, Flooding, Landslides, and Mudslides	X	X	X	September 19, 2018		
AL – DR Hurricane Michael	X	X	X	October 25, 2018		
CNMI – DR Typhoon Yutu	X	X	X	October 26, 2018		

Disaster Amendments



FEMA

Amendment	Date Issued	Action
Amendment No. 2 to FEMA-4400-DR-GA	October 25, 2018	Adds 7 counties for Individual Assistance
Amendment No. 9 to FEMA-4393-DR-NC	October 25, 2018	Adds 3 counties for Individual Assistance

Readiness – Deployable Teams and Assets



FEMA

Resource	Force Strength	Available	Deployed	Other	Cadres with 25% or Less Availability
IM Workforce	12,284 ▲	2,030 ▼ 17%	6,844▲	3,410	DSA 9% (74/854); EA 21% (116/565); EHP 7% (29/428); ER 0% (0/43); FL 14% (22/159); FM 21% (57/272); HM 11% (112/1019); HR 12% (30/245); IA 21% (613/2914); IT 10% (63/635); LOG 13% (157/1191); OPS 17% (47/275); PA-NEW 8% (150/1904); PLAN 15% (52/344); SAF 2% (1/57); SEC 2% (2/119)
National IMATs* (1-2 Teams)	East : Composite: West:	Deployed Available B-2			
Regional IMATs (≤ 3 Teams)	Assigned: Available: PMC / NMC: Deployed:	13 1 2 10			
National ISBs (0 Teams)	Team A Team B Team C	Deployed Deployed Deployed			
US&R (>66%)	Assigned: Available: PMC / NMC: Deployed:	28 27 (+2) 1 (-2) 0			
MERS (>33-65%)	Assigned: Available: PMC / NMC: Deployed:	36 18 0 18			
FCO (≥3 Type I)	Assigned: Available: PMC / NMC: Deployed:	32 5 1 26			
FDRC (≥3)	Assigned: Available: PMC / NMC: Deployed:	13 4 2 7			

As of 3:00 p.m. EDT Oct 25, 2018 Created by: FEMA NWC

* **B-2 Status:** Assemble ≤ 2-hrs, On Site ≤ 18-hrs; **B-48 Status:** Assemble and deploy ≤ 48hrs; **Charlie Status:** No team assemble time requirement

FEMA Readiness – Activation Teams



FEMA

Status		Activated Team	Activation Level	Activation Times	Reason / Comments
NWC (5 Teams)	Steady State				
NRCC (2 Teams)	Activated	ROC		24/7	Tropical Cyclone Yutu
HLT	Activated				
RWC / MOCs (10 Regions)	Activated	Region VI	Enhanced Watch	8:00 a.m. – 8:00 p.m. EDT	Texas Flooding
RRCCs (10 Regions)	Steady State				

Backup Regions: VI, X and VIII



FEMA

**FEMA's mission is helping people
before, during, and after disasters.**

Click [here](#) to subscribe to this briefing.