

The Disaster Center is dedicated to the idea that disaster mitigation is cost effective and individuals pursuing their own interest are the greatest potential force for disaster reduction.

Please consider making a small donation to the Disaster Center



When disaster mitigation is cost effective, we are on the road to bringing disasters to an end.



# FEMA

## Daily Operations Briefing

Monday, October 29, 2018

8:30 a.m. EDT

# Significant Activity – Oct 26-29



FEMA

**Significant Events:** Tropical Cyclone Yutu Response, Nor'easter

**Tropical Activity:**

- Atlantic – Hurricane Oscar
- Eastern Pacific – Disturbance 1 – Low (40%); Disturbance 2 – Low (20%)
- Central Pacific – No tropical cyclones expected next 48 hours
- Western Pacific – No activity affecting U.S. interests

**Significant Weather:**

- Gusty winds, coastal flooding, heavy rain and freezing rain possible – Northeast
- Red Flag Warnings – CA & NV (Sierra Nevada mountains)

**Declaration Activity:** None

# Tropical Cyclone Yutu

## Safety and Security:

- Saipan: 1 confirmed fatality

## Food, Water, Sheltering:

- Emergency boil water advisory remains in effect for all of Saipan and Tinian
- **Staged and stored food and water sufficient for all projected planning factors**
- Saipan: 50% of grocers, **62%** of restaurants and 31% of retailers have re-opened
- Shelters/Occupants: **13 (-2) / 874 (-66)** across CNMI; all Rota shelters have closed

## Health and Medical:

- Saipan: **Hospital fully operational, at capacity; planning to open a medical support shelter**
- **San Antonio Satellite Health Clinic open Mon - Sat**
- Tinian: **Medical Center structurally compromised; damage assessments are ongoing**

## Energy:

- 60% of gas stations open on Saipan; both gas stations on Tinian closed due to lack of power
- Utility crews have begun to restore power on Saipan and Tinian
  - Saipan: **8 out of 9** power feeders are down; **feeder to hospital was energized, 35 FEMA generator in place;**
  - Tinian: 4 out of 4 power feeders down; power plant damaged, 80-90% damage to distribution structures; expect to return station to service within 24-48 hours
  - Rota: Power nearly 99% restored, planning to move crews from Rota to Tinian

## Communication:

- Exchange connection between islands is on generator power with 96 hour capacity
- All cell towers on Saipan and Rota remain on generator power

## Transportation:

- Public transportation systems not operational
- All sea ports open with no restrictions
- Airports:
  - Saipan: Inbound flights limited to returning residents and humanitarian assistance;; repairs ongoing but no estimated time for completion; **Mobile ATC Tower inbound Nov 1**
  - Tinian: Open for humanitarian relief flights only; outbound commercial flights for tourists
- Major roads and most secondary roads are accessible

Rota Tinian Saipan



FEMA

## State/Local Response

- CNMI EOC at Full Activation
- Governor declared a State of Emergency; directed Guam Homeland Security/Office of Civil Defense
  - to lead local government efforts
    - Governor directed all non-critical government employees to report to work today, Oct 29, to assist in preliminary damage assessments and prepare offices to reopen
    - Guam Guardsmen expected to begin duty on Saipan as early as Tuesday, Oct 30

## FEMA HQ/Federal Response

- FEMA-3408-EM-CNMI approved Oct 23; FEMA-4404-DR-CNMI approved Oct 26
- FEMA Region IX RWC at Steady State, continues to monitor
- FEMA Region IX IMAT-2 deployed to Saipan; LNOs in Guam, Rota and Tinian
- FEMA Region VII IMAT deployed to CNMI (already deployed for Mangkhut)
- **FEMA NRCC: Effective 8:00 a.m. EDT today, Oct 29 (10:00 p.m. ChST today, Oct 29)**
  - **Response Operations Cell (ROC) will transition to day shift, and to Enhanced Watch for night shift**
  - **Shift changes, and transitions between day shift ROC operations and night shift Enhanced Watch operations will occur at 8:00 a.m. and 8:00 p.m. EDT (10:00 p.m. and 10:00 a.m. ChST)**
- FEMA HQ ISB team and MERS assets deployed
- HHS: Federal Health Coordinating Officer, DMAT, IMT personnel and LNOs deployed; three CDC SMEs will arrive in Saipan today, Oct 29, to provide public health technical assistance
- USACE: 249th Engineer BN 'Prime Power' deployed

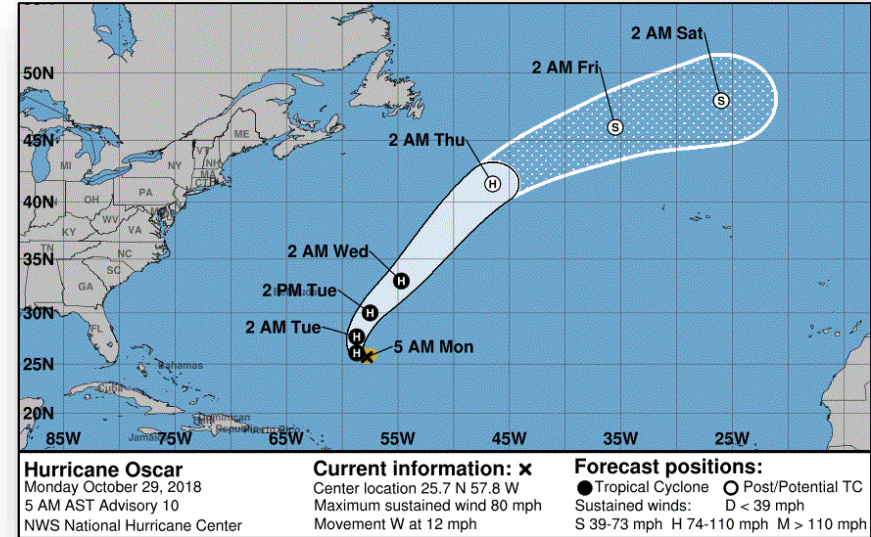
# Tropical Outlook – Atlantic



FEMA

## Hurricane Oscar (Advisory #10 as of 5:00 a.m. EDT)

- 620 miles SE of Bermuda
- Moving W at 12 mph
- Maximum sustained winds 80 mph
- Hurricane-force winds extend 15 miles; tropical-storm force winds extend 70 miles



# Tropical Outlook – Eastern Pacific

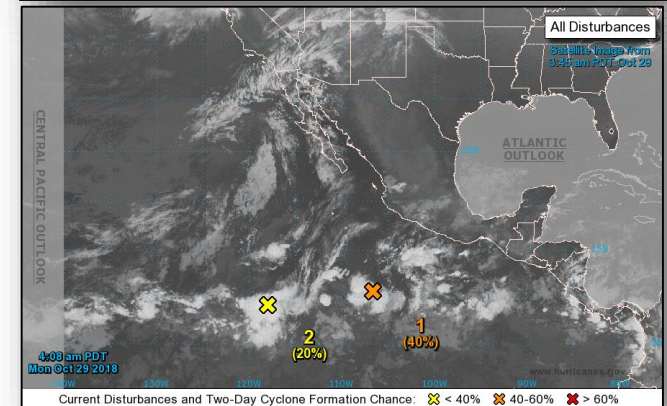
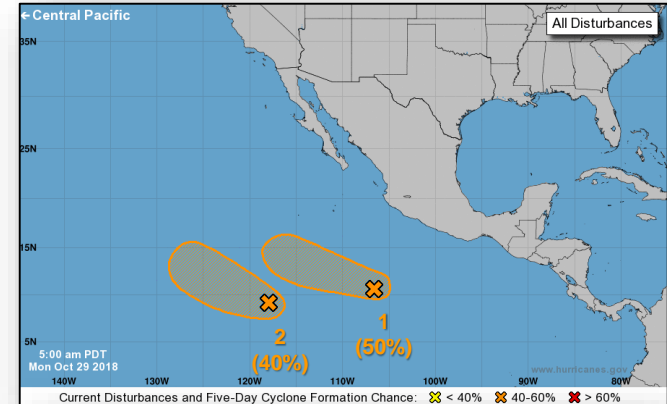


## Disturbance 1 (as of 8:00 a.m. EDT)

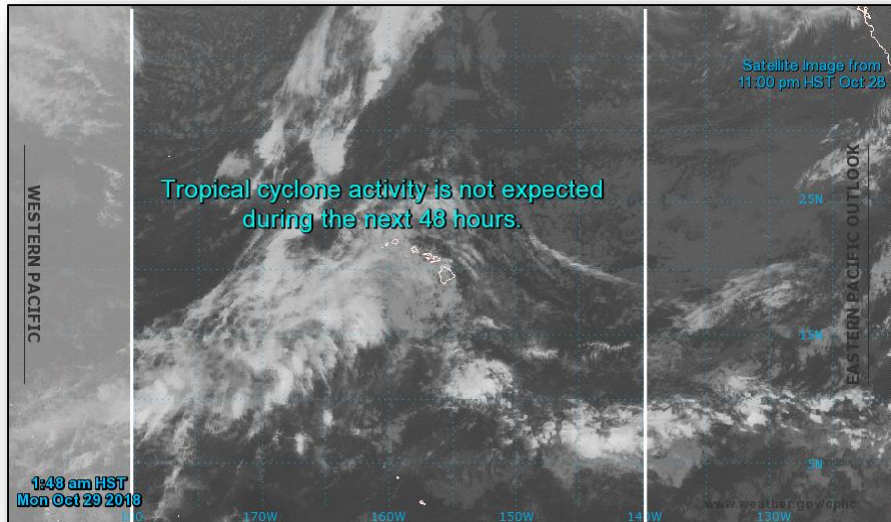
- Several hundred miles SW of Acapulco, Mexico
- Moving W at 10 mph
- Conditions could become a little more conducive for some development over the next few days
- Formation chance through 48 hours: Medium (40%)
- Formation chance through 5 days: Medium (50%)

## Disturbance 2 (as of 8:00 a.m. EDT)

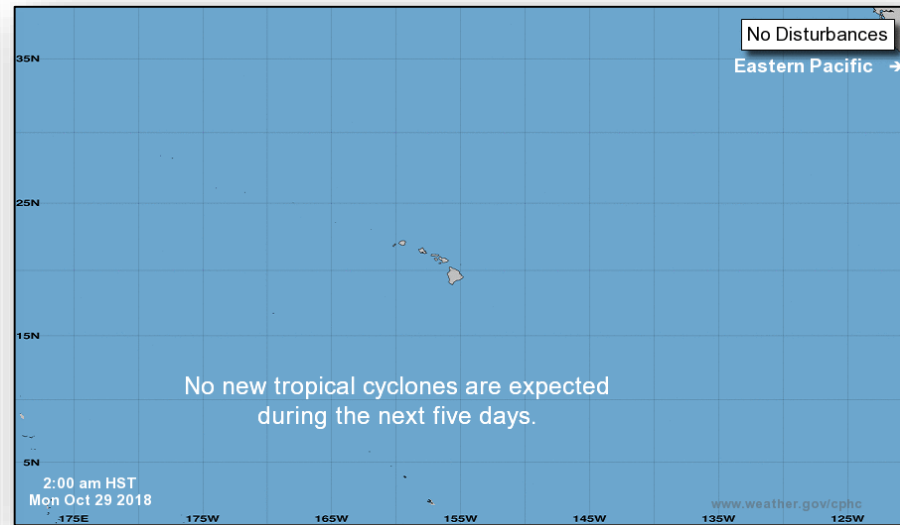
- 1,100 miles SSW of southern tip of Baja CA Peninsula
- Moving WNW at 10 mph
- Slow development possible over next few days
- Formation chance through 48 hours: Low (20%)
- Formation chance through 5 days: Medium (40%)



# Tropical Outlook – Central Pacific



**48 Hour Outlook**

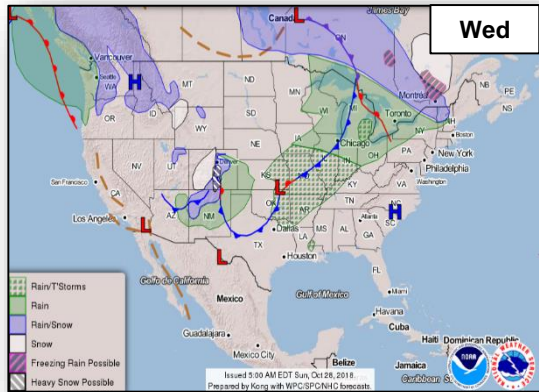
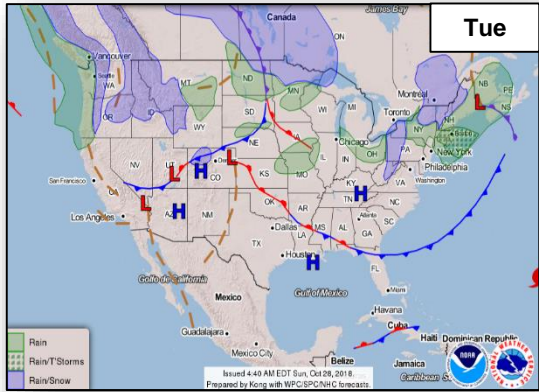
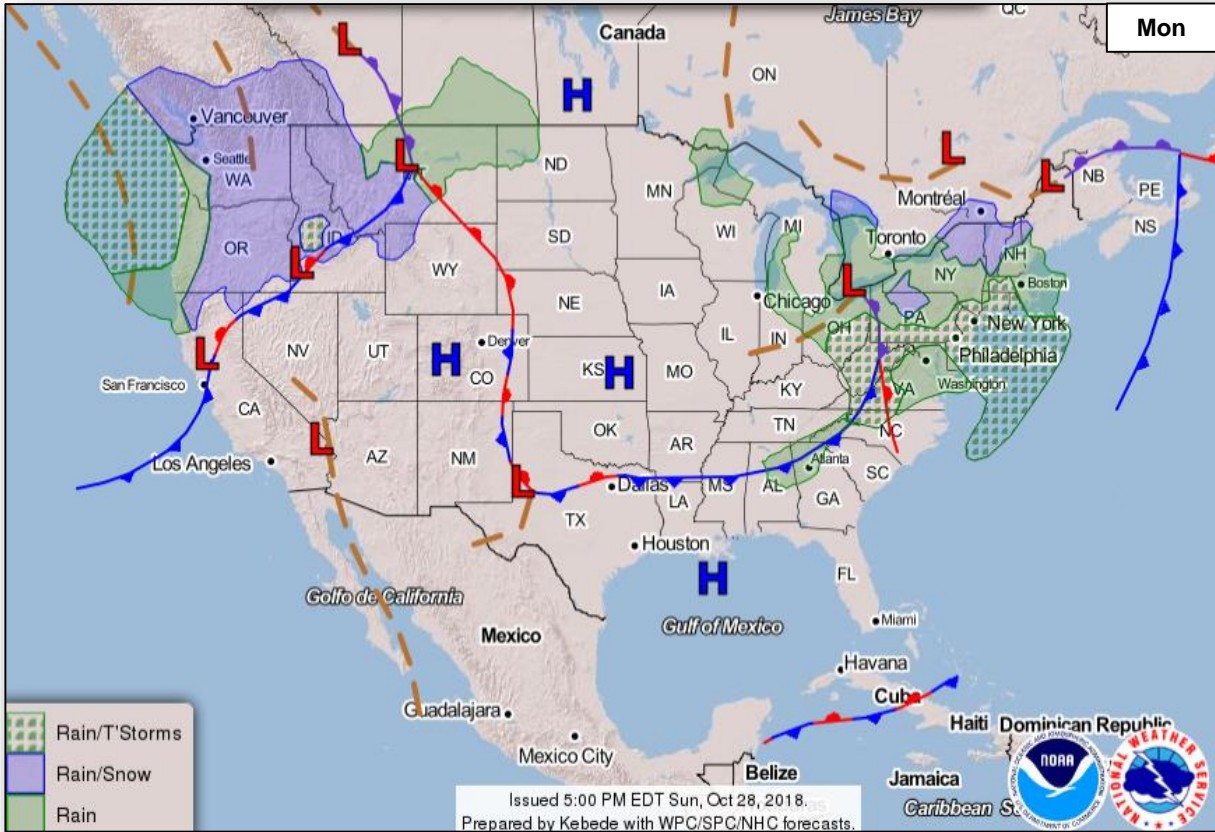


**5 Day Outlook**

# National Weather Forecast



FEMA

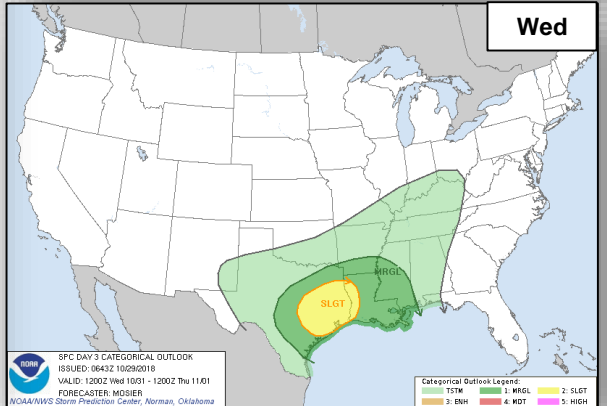
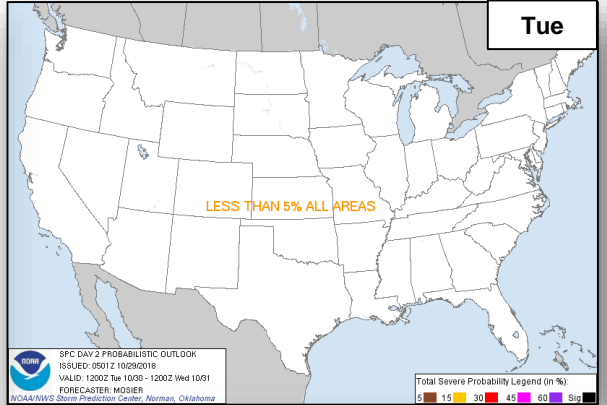
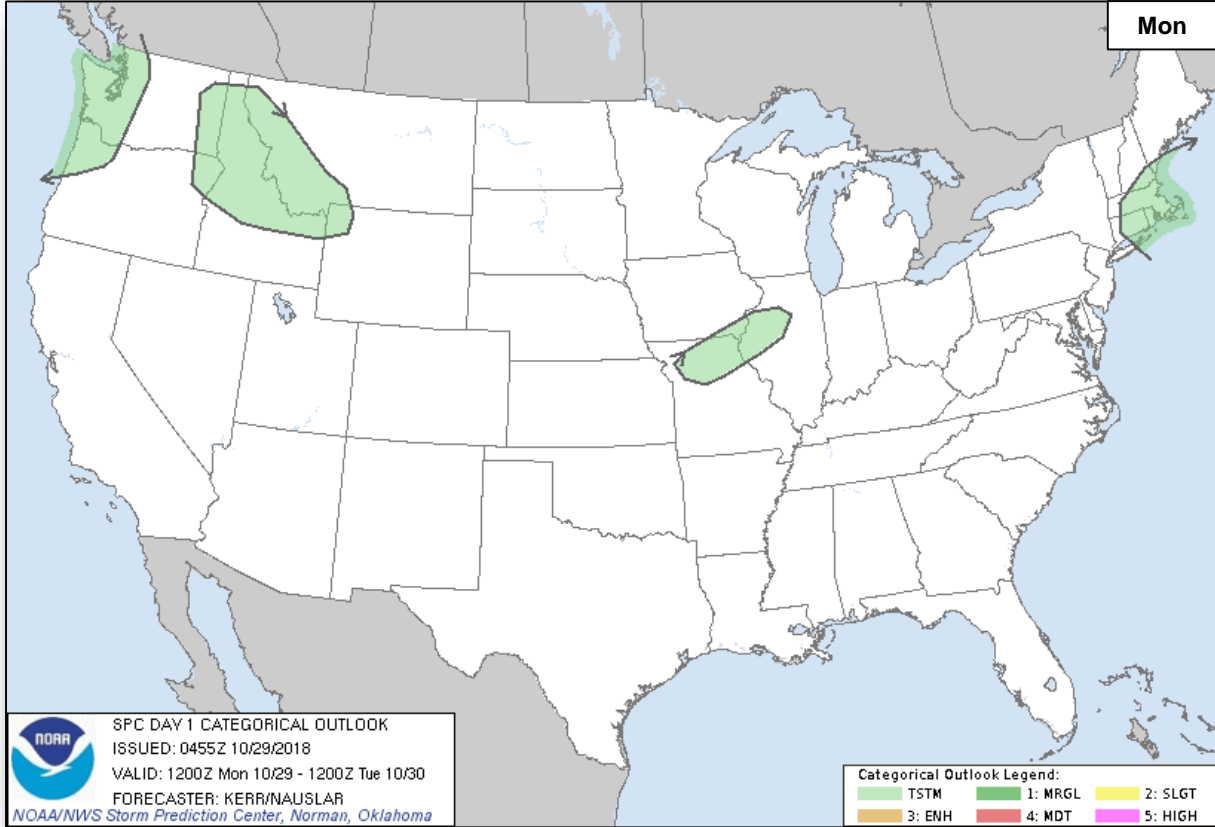




# Severe Weather Outlook



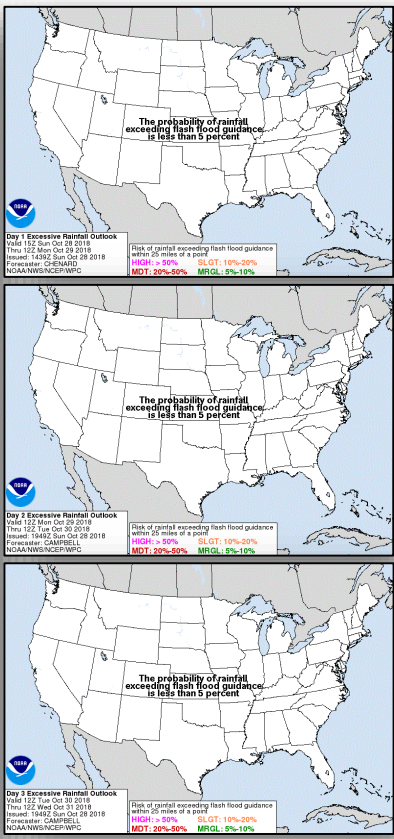
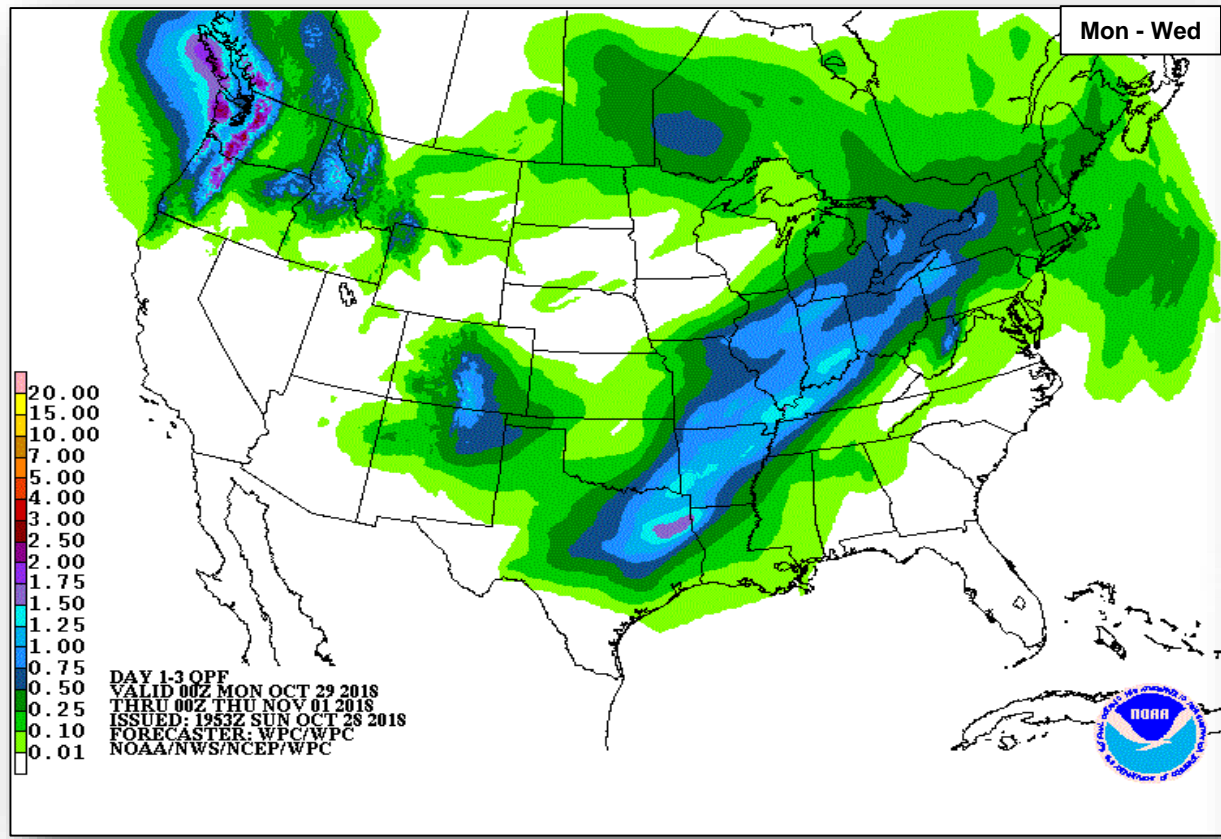
FEMA



# Precipitation / Excessive Rainfall Forecast



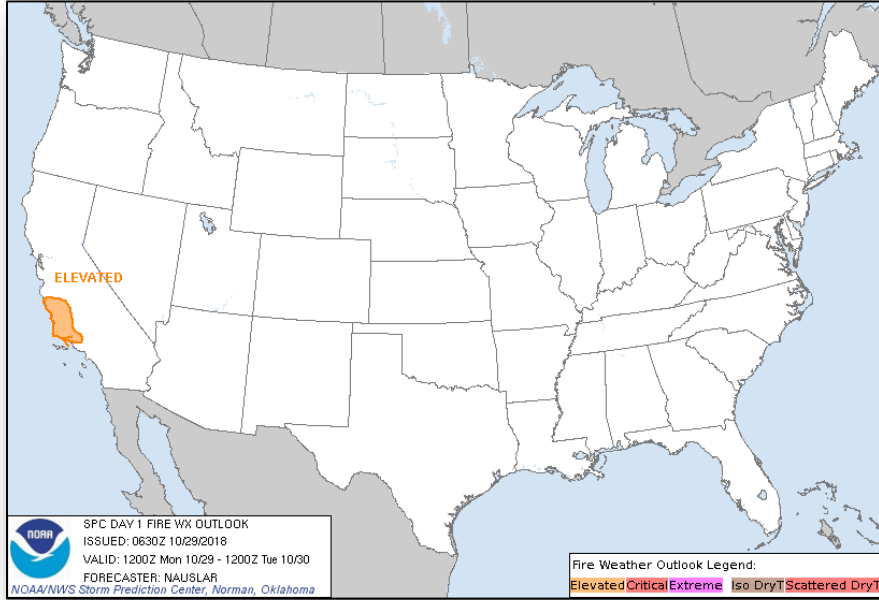
FEMA



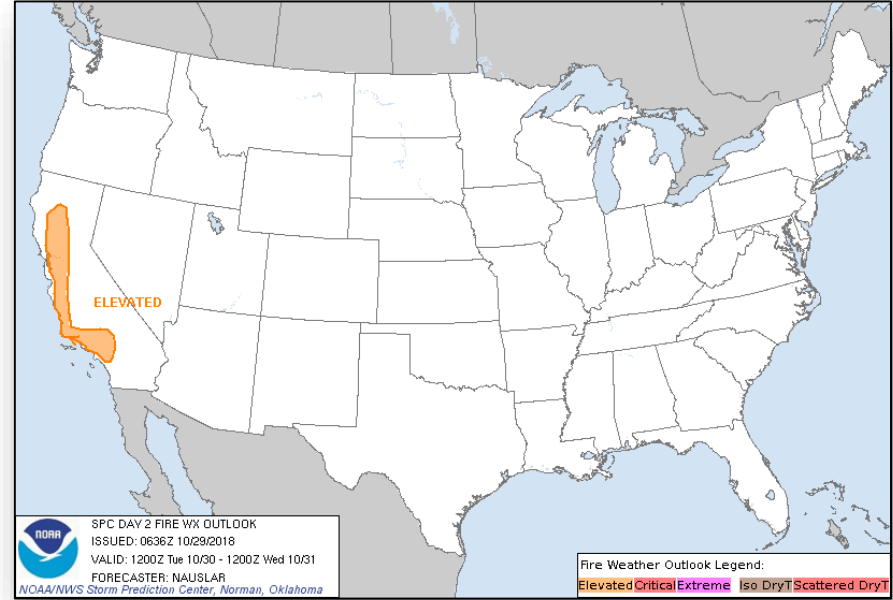
# Fire Weather Outlook



FEMA



**Monday**

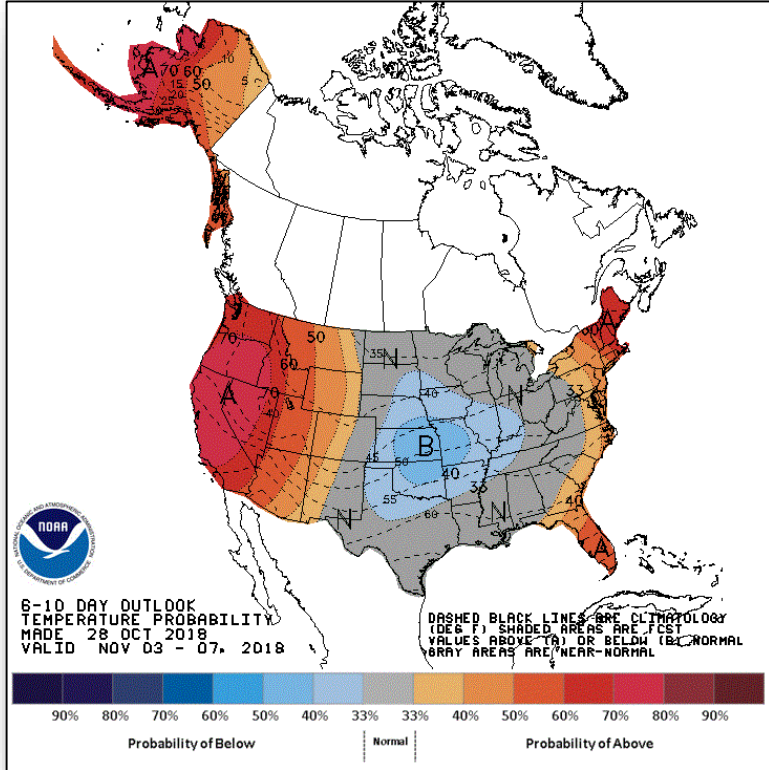


**Tuesday**

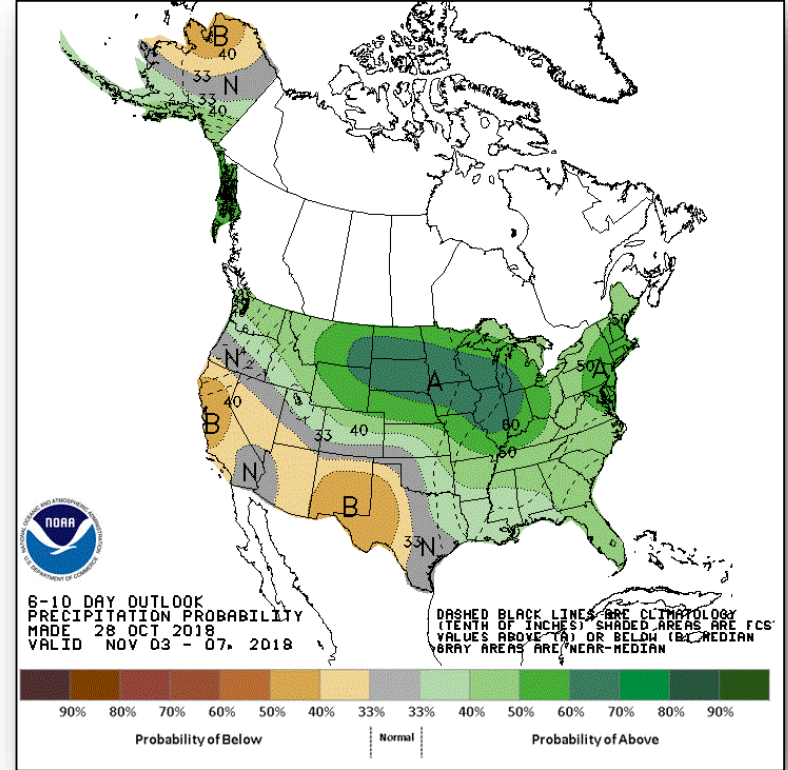
# Long Range Outlooks – Nov 3 – 7



FEMA



**6 - 10 Day Temperature Probability**



**6 - 10 Day Precipitation Probability**

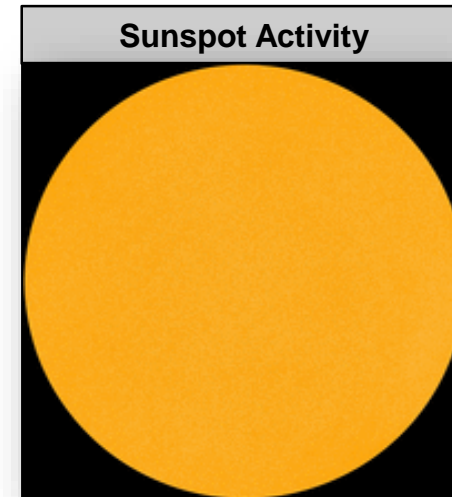
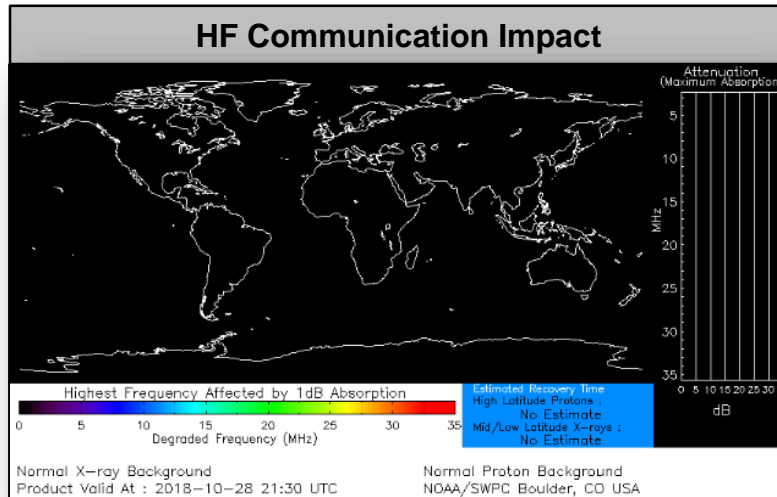
# Space Weather



FEMA

	Space Weather Activity	Geomagnetic Storms	Solar Radiation	Radio Blackouts
Past 24 Hours	None	None	None	None
Next 24 Hours	None	None	None	None

For further information on NOAA Space Weather Scales refer to: <http://www.swpc.noaa.gov/noaa-scales-explanation>



# Joint Preliminary Damage Assessments



FEMA

Region	State / Location	Event	IA / PA	Number of Counties		Start – End
				Requested	Completed	
III	VA	Hurricane Michael October 10-11, 2018 and continuing	IA	0	0	N/A
			PA	29	0	10/29 – TBD
V	MN	Flooding October 10, 2018	IA	0	0	NA
			PA	1	0	10/29 – TBD
VI	TX	Riverine Flooding October 16, 2018 and continuing	IA	9	0	TBD
			PA	33	1	10/24 – TBD

# Disaster Requests & Declarations



**FEMA**

Declaration Requests in Process					Requests APPROVED (since last report)	Requests DENIED (since last report)
2	IA	PA	HM	Date Requested	0	0
NC – DR (Appeal) Severe Storms, Flooding, Landslides, and Mudslides	X	X	X	September 19, 2018		
AL – DR Hurricane Michael	X	X	X	October 25, 2018		

# Readiness – Deployable Teams and Assets



FEMA

Resource	Force Strength	Available	Deployed	Other	Cadres with 25% or Less Availability
<b>IM Workforce</b>	12,257 ▲	2,174 ▲ 18%	6,639 ▼	3,444	DSA 10% (82/856); EA 21% (117/565); EHP 7% (30/428); ER 2% (1/43); FL 14% (23/159); FM 22% (59/271); HM 10% (104/1019); HR 13% (33/245); IA 24% (713/2914); IT 11% (68/635); LOG 13% (153/1191); OPS 16% (45/274); PA-NEW 9% (165/1877); PLAN 15% (52/344); SAF 2% (1/57); SEC 2% (2/119)
<b>National IMATs*</b> (1-2 Teams)	East : Composite: West:	Deployed Available B-2			
<b>Regional IMATs</b> (≤ 3 Teams)	Assigned: Available: PMC / NMC: Deployed:	13 1 3 (+1) 9 (-1)			
<b>National ISBs</b> (0 Teams)	Team A Team B Team C	Deployed Deployed Deployed			
<b>US&amp;R</b> (>66%)	Assigned: Available: PMC / NMC: Deployed:	28 27 1 0			
<b>MERS</b> (>33-65%)	Assigned: Available: PMC / NMC: Deployed:	36 20 (+2) 0 16 (-2)			
<b>FCO</b> (≥3 Type I)	Assigned: Available: PMC / NMC: Deployed:	32 5 1 26			
<b>FDRC</b> (≥3)	Assigned: Available: PMC / NMC: Deployed:	13 4 2 7			

As of 3:00 a.m. EDT Oct 29, 2018 Created by: FEMA NWC

\* **B-2 Status:** Assemble ≤ 2-hrs, On Site ≤ 18-hrs; **B-48 Status:** Assemble and deploy ≤ 48hrs; **Charlie Status:** No team assemble time requirement



# FEMA Readiness – Activation Teams



Status		Activated Team	Activation Level	Activation Times	Reason / Comments
<b>NWC</b> (5 Teams)	Steady State				
<b>NRCC</b> (2 Teams)	Activated	ROC Enhanced Watch		Day shift Night shift	Tropical Cyclone Yutu
<b>HLT</b>	Activated				
<b>RWC / MOCs</b> (10 Regions)	Steady State	Region VI			
<b>RRCCs</b> (10 Regions)	Steady State				

Backup Regions: **VI, X and VIII**



# FEMA

**FEMA's mission is helping people before, during, and after disasters.**

Click [here](#) to subscribe to this briefing.