

FEMA National Watch Center

# Daily Operations Briefing

Thursday, December 16, 2021

8:30 a.m. ET



**FEMA**

# National Current Ops / Monitoring

---

## New Significant Incidents / Ongoing Ops

- Severe Weather and Tornadoes – Central U.S.
- Derecho– Central Plains to Upper Mississippi Valley

## Hazard Monitoring

- Rain and Thunderstorms – Southern Plains to Ohio Valley
- Winter Weather – Great Lakes and northern New England

## Disaster Declaration Activity

- FMAG approved – Cobb Fire, OK
- FMAG approved – North 207 Fire, TX

## Event Monitoring

- No significant events



**FEMA**

# Derecho– Central Plains to Upper Miss. Valley

**Current Situation:** A derecho developed late yesterday afternoon into early this morning, stretching from the Central Plains to the Upper Mississippi Valley. Preliminary reports from the Storm Prediction Center indicate 20 tornado touchdowns, 12 hail events, and 384 wind events. Initial damage reports from FEMA Regions V and VII indicate tree damage from high winds caused isolated power outages, damage to homes and businesses, and debris on roadways. There have been no requests for FEMA assistance.

**Power Outages:** (Eagle-I as of 7:00 a.m. ET)

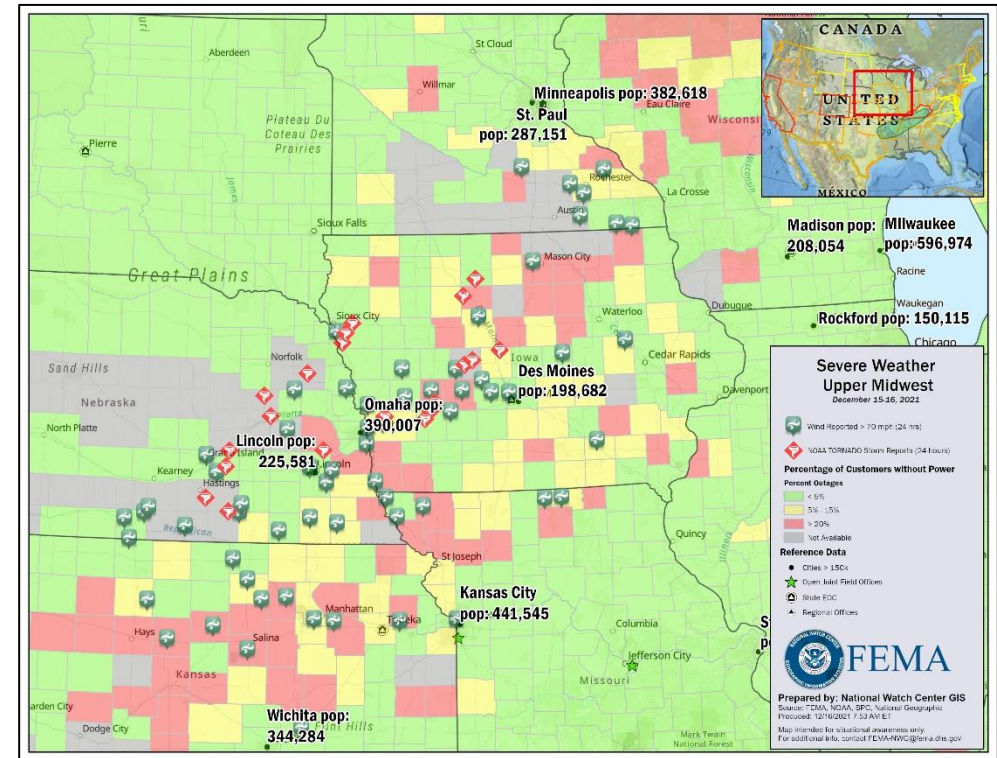
- Region V: WI – 173k (6.35%); MI – 125k (2.66%); IL – 22k (0.38%); MN – 16k (0.78%)
- Region VII: IA – 55k (3.81%); KS – 58k (4.97%); MO – 30k (1.02%)

**State / Local Response:**

- No changes to state EOC activation levels
- Preliminary damage assessments ongoing

**FEMA / Federal Response:**

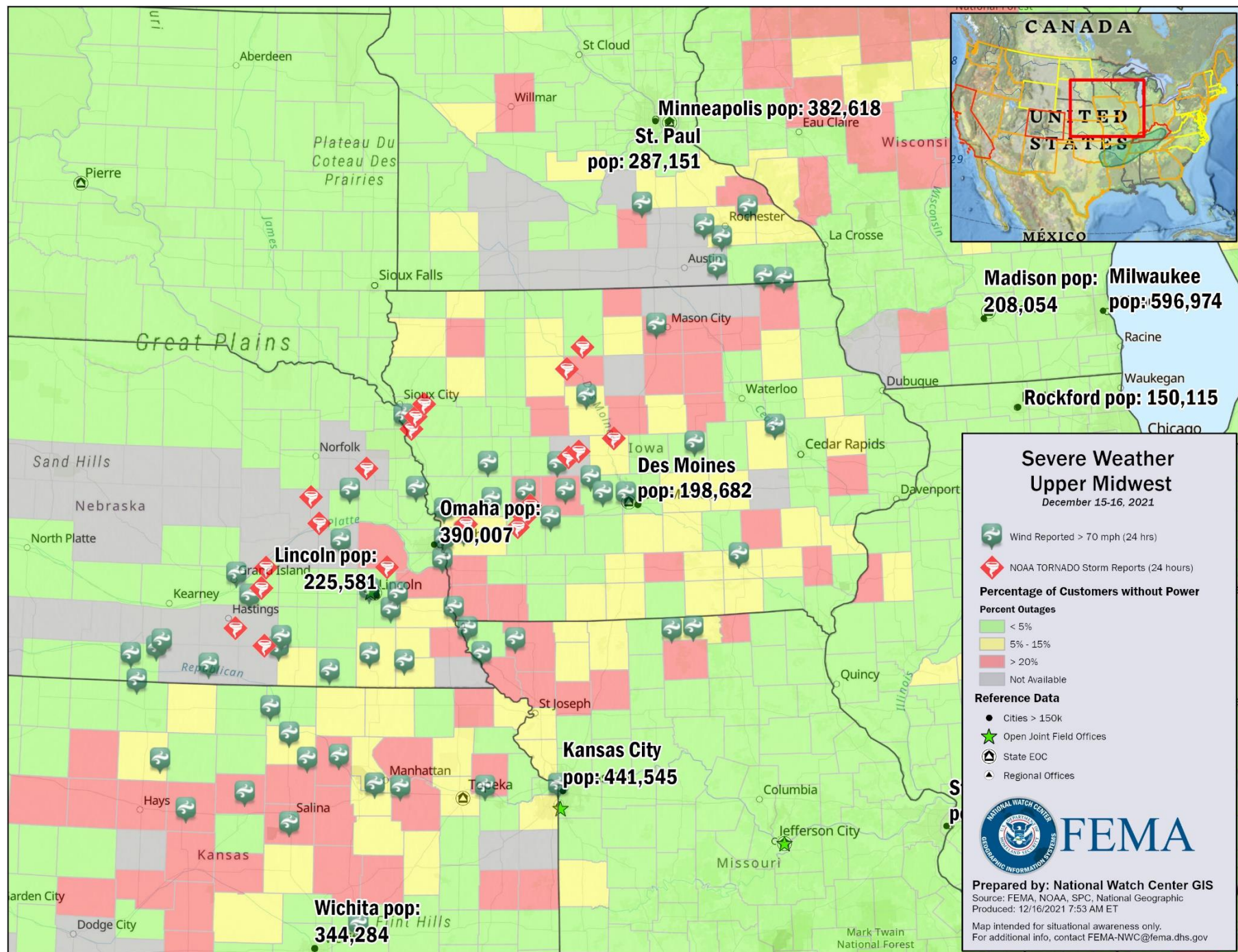
- FEMA HQ Response Operations Division led Operations Synchronization Teleconference with HQ directorates and impacted regions
- Region V/VII RWCs are monitoring
- Region V/VII IMATs are available
- N-IMATs Red and Gold are available
- NWC continues to monitor



FEMA

National Watch Center





# Severe Weather and Tornadoes – Central U.S.

**Current Situation:** Severe weather impacted the central U.S. on Dec 10-11; preliminary reports of 52 tornadoes, 270 wind, and 20 hail reports across several states. **Kentucky was the most severely impacted state; response and recovery operations continue.**

## **Lifeline Impacts (Kentucky):**

### **Safety and Security:**

- Structure assessments completed: 5,439; Destroyed: 527; Major Damage: 595; Minor Damage: 914 (FEMA-4630-DR-KY IM SLB, as of Dec 15, 12:00 p.m. ET)
- Two QRTs of 50 federal LEOs providing force protection to all US&R task forces
- 561 (+90) National Guard personnel conducting debris clearance, recovery operations, law enforcement support, and traffic control support (NGB Joint Operations Center Report, as of Dec 16, 11:30 p.m. ET)

### **Health & Medical:**

- Fatalities/Injuries: KY – 74 fatalities; TN – 4 fatalities / 74 injuries; AR – 2 fatalities / 21 injuries; MO – 2 fatalities / 9 injuries; IL – 6 fatalities
- 10 medical facilities on generator power

### **Food, Water, Shelter:**

- Shelters: 10 (+3) with 538 (+208) occupants (ARC Shelter report as of 7:01 a.m. ET)
- 16k liters of water / 21k meals delivered
- Boil water advisories in effect for 25k (+7k) customers; 2 (-1) water/wastewater systems non-operational; 19 (+8) systems under limited operations (FEMA-4630-DR-KY IM SLB, as of Dec 15, 12:00 p.m. ET)

### **Energy:**

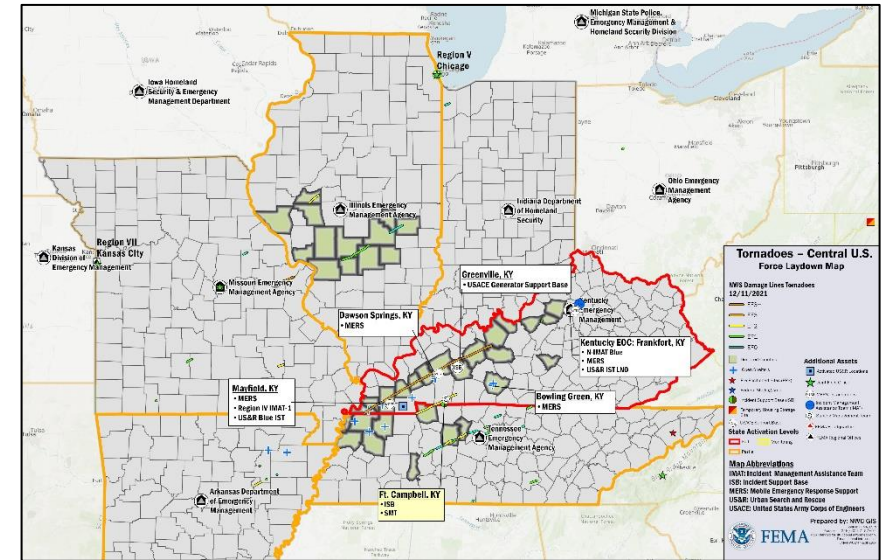
- Power outages: 4k (-3k) (0.19%) (DOE Eagle-I as of 8:00 a.m. ET)

### **Communications:**

- 95% of cellular communications in Mayfield and Dawson Springs restored; full capabilities anticipated by today
- Disaster Information Reporting System (DIRS) activated (RIV ESF-2 Report, as of Dec 15)

## **State / Local Response:**

- KY EOC at Full Activation; governor declared state of emergency
- National Guard activated



## **FEMA / Federal Response:**

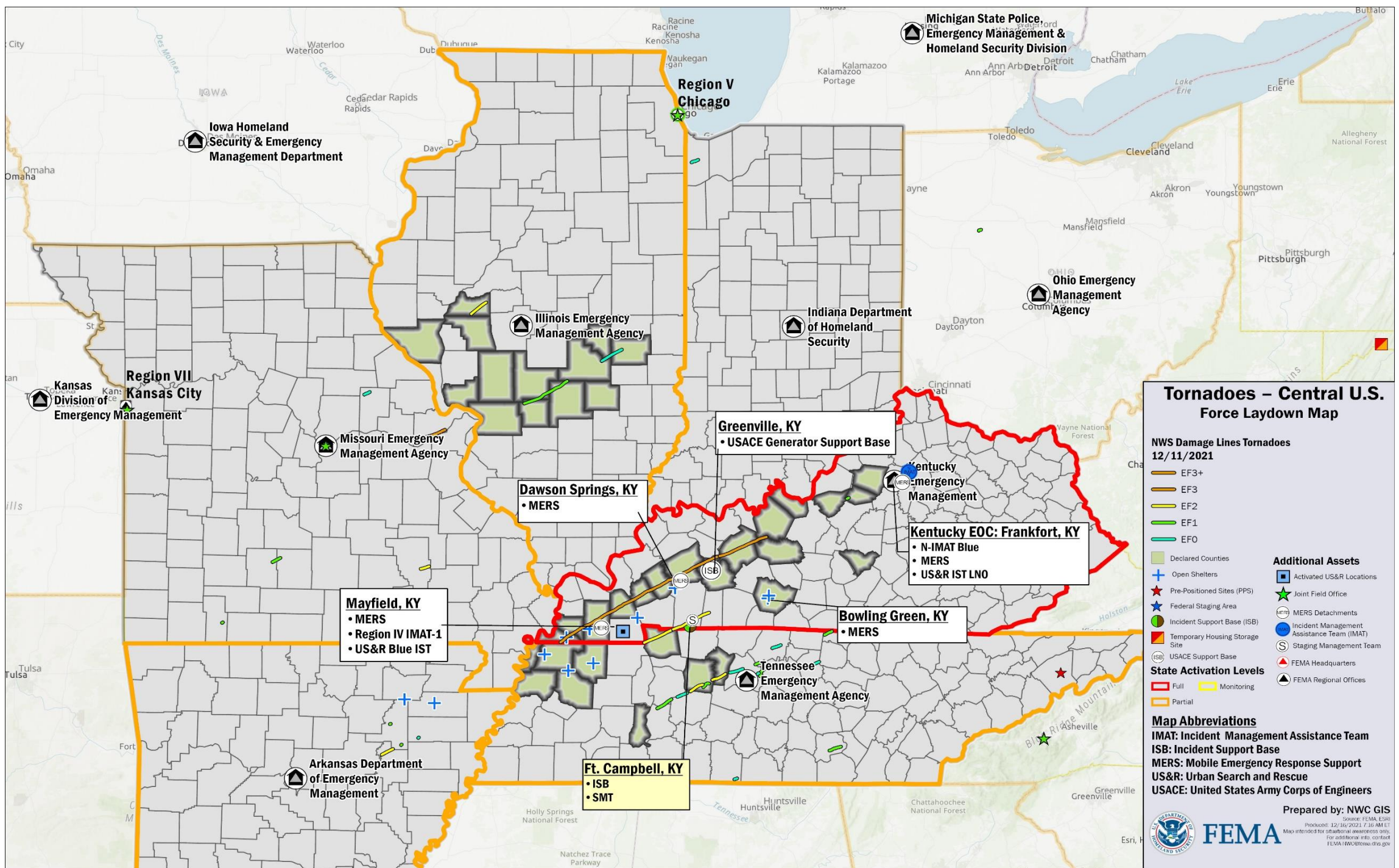
- FEMA-3575-EM-KY, FEMA-4630-DR-KY, FEMA-3576-EM-TN, FEMA-3577-EM-IL approved
- Region IV RRCC at Level II (day shift), RWC at Enhanced Watch (night shift) with select ESFs and DCO; IMAT-1 deployed to KY
- NWC continues to monitor
- National IMAT Blue deployed to KY EOC
- MERS teams and personnel deployed throughout KY
- Logistics ISB & SMT teams deployed to ISB in Ft. Campbell, KY
- US&R Blue IST operational in Mayfield, one IST LNO deployed to KY SEOC: based on completion of search and rescue requirements all four Type-3 task forces (IN-TF1/TN-TF1/MO-TF1/OH-TF1) and additional HRD canines have been demobilized
- USACE: Planning and Response Team (PRT) providing support

National Watch Center



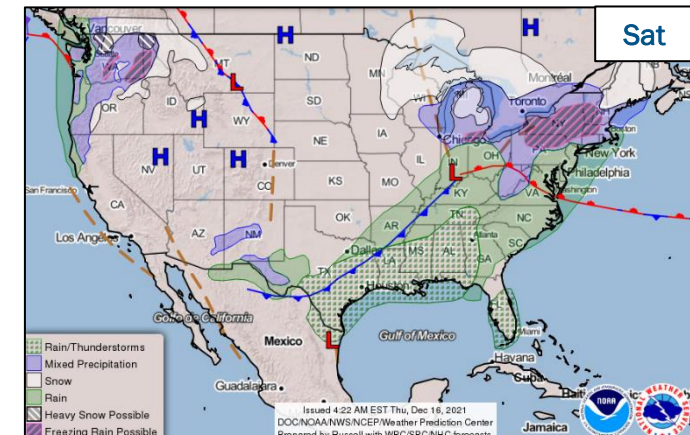
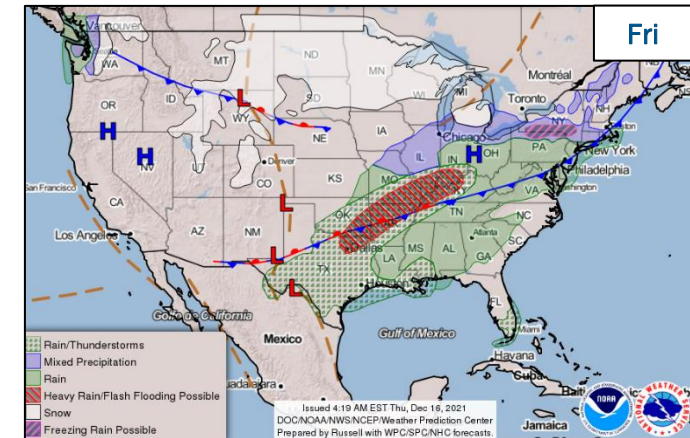
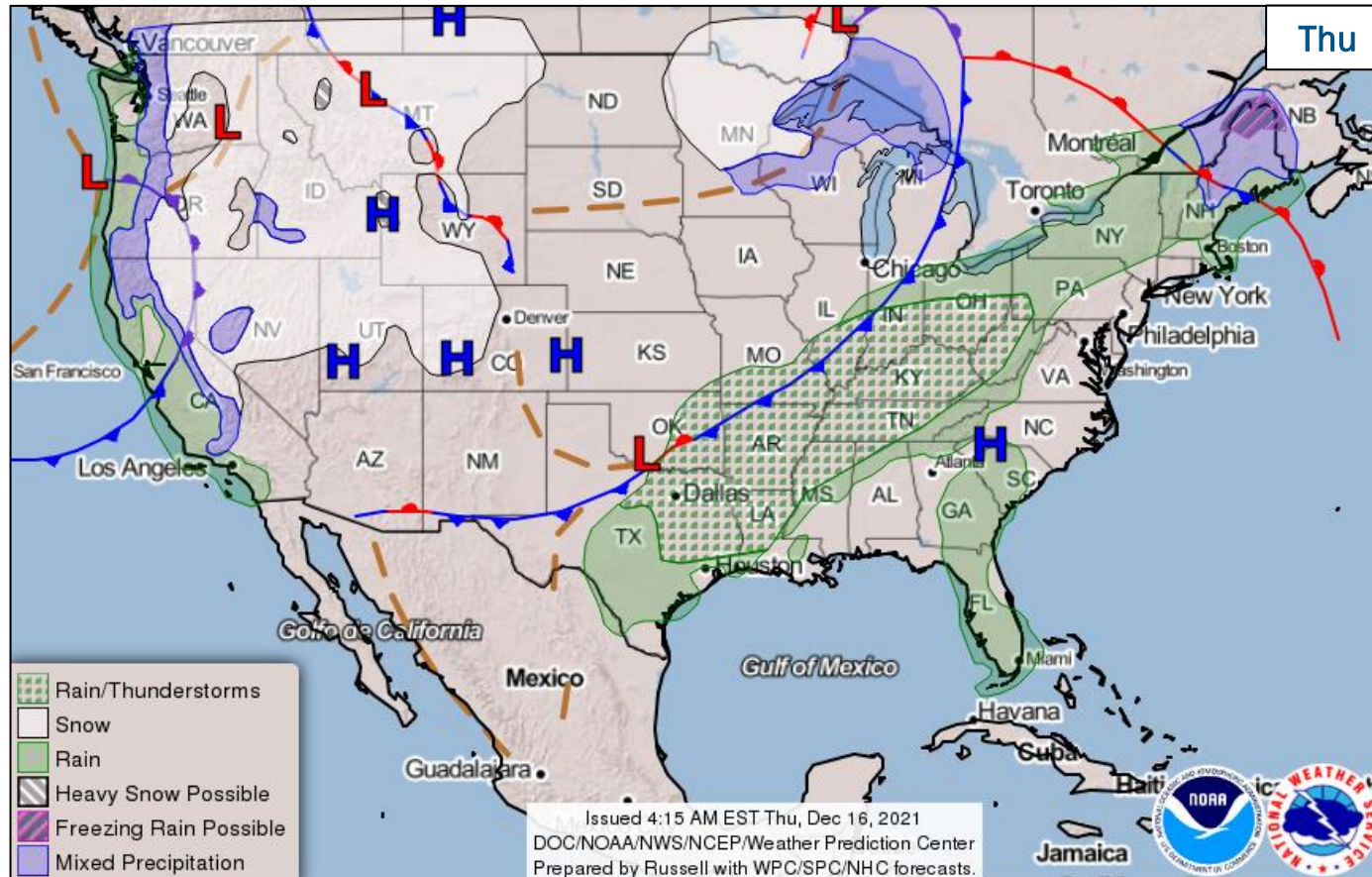
FEMA







# National Weather Forecast



FEMA

National Watch Center

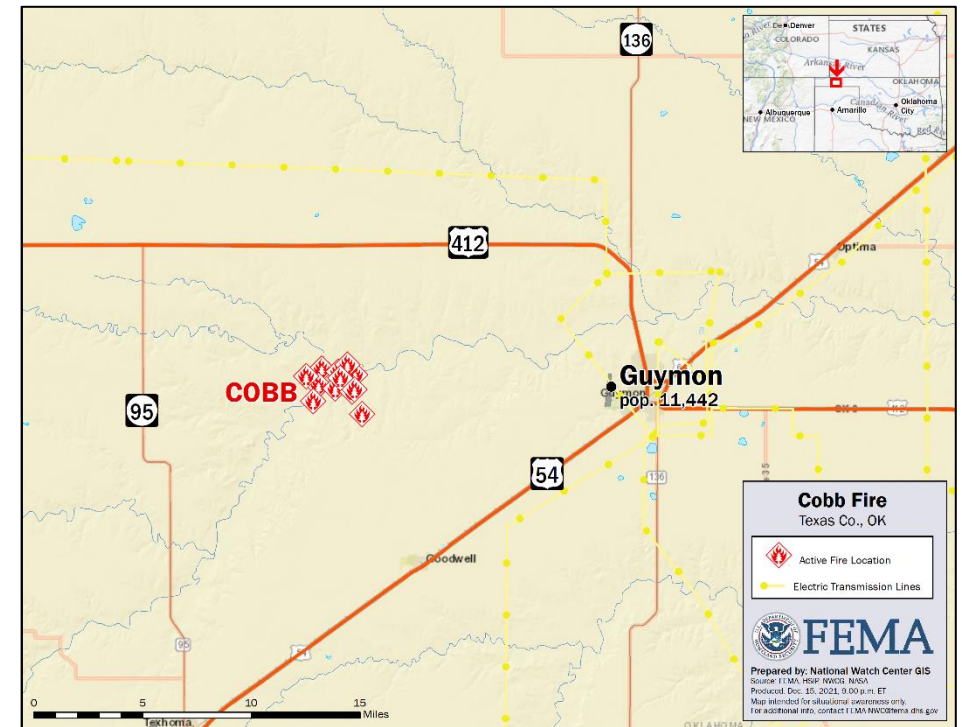
# Cobb Fire – Oklahoma

Fire Name (County, ST)	FMAG #	Acres Burned	Percent Contained	Evacuations	Structures (Homes / Other)			Fatalities / Injuries
					Threatened	Damaged	Destroyed	
Cobb (Texas, OK)	5421-FM-OK	1,800	0%	M: 0	H: 1,700	H: 0	H: 0	0 / 0
				V: 4,250	O: 0	O: 0	O: 0	

**Situation:** The fire began on Dec 15 and is burning on state and private land in the vicinity of Guymon, OK (pop. 11.4k). It is threatening multiple buildings, infrastructure, utilities and equipment in the area.

## Response:

- OK EOC at Monitoring (Wildfires)
- FMAG approved Dec 15
- Shelter status unknown
- Region VI and NWC continue to monitor



**FEMA**

National Watch Center



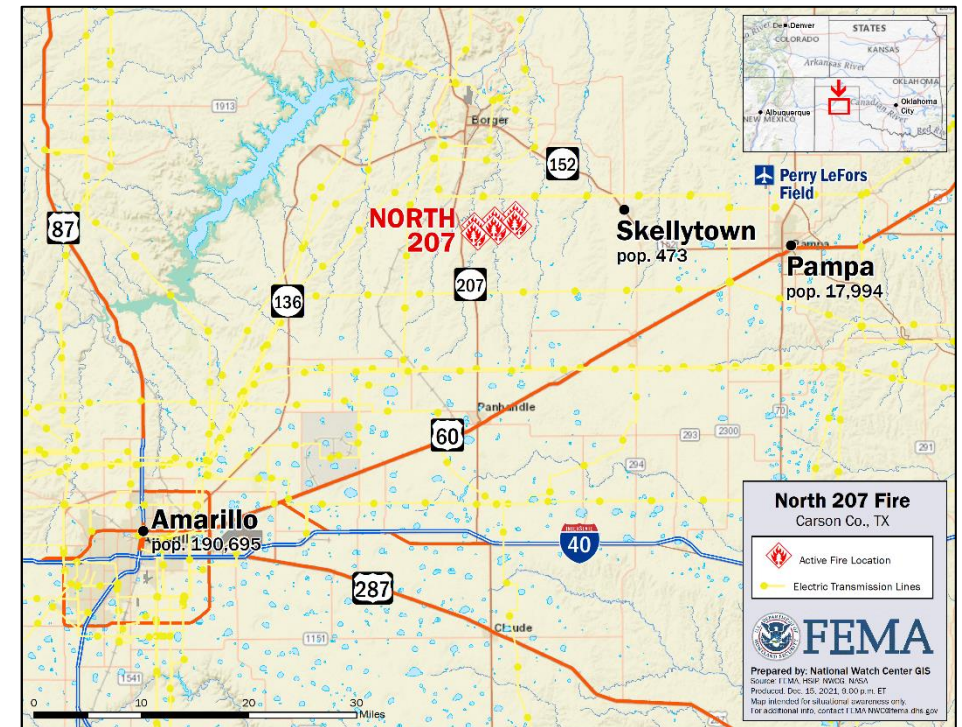
# North 207 Fire – Texas

Fire Name (County, ST)	FMAG #	Acres Burned	Percent Contained	Evacuations	Structures (Homes / Other)			Fatalities / Injuries
					Threatened	Damaged	Destroyed	
North 207 (Carson, TX)	5422-FM-TX	5,000	0%	M: 500	H: 300	H: 0	H: 0	0 / 0
				V: 0	O: 0	O: 0	O: 0	

**Situation:** The fire began on Dec 15 and is burning on private land in the vicinity of Skellytown, TX (pop. 473). It is threatening multiple buildings, infrastructure (including Perry LeFors Field), utilities, equipment and the city of Pampa, TX (pop. 18k).

## **Response:**

- TX EOC at Partial Activation (COVID-19)
- FMAG approved Dec 15
- Shelter status unknown
- Region VI and NWC continue to monitor



**FEMA**

National Watch Center

# Joint Preliminary Damage Assessments

Region	State / Location	Incident	IA	Number of Counties		Start – End
			PA	Requested	Complete	
I	ME	Coastal Storm Oct 30-31	IA	0	0	N/A
			PA	4	1	11/8 – TBD
III	DE	Tropical Depression Ida Sep 1	IA	1	0	12/7 – TBD
			PA	0	0	N/A
VI	AR	Severe Storms and Tornadoes Dec 10	IA	5	1 (+1)	12/15 – TBD
			PA	0	0	N/A
X	WA	Flooding Nov 2-19	IA	3	0	12/1 – TBD
			PA	12	0	12/4 – TBD
	AK	Severe Storm Oct 28-31	IA	0	0	N/A
			PA	1	0	TBD



FEMA



# Declaration Requests in Process – 2

State / Tribe / Territory – Incident Description	Type	IA	PA	HM	Requested
CTCR* – Drought, Fire, and Straight-Line Winds	DR		X	X	Nov 15
AL – Flooding	DR	X		X	Nov 19

*\* Confederated Tribes of the Colville Reservation*



**FEMA**

# FEMA Common Operating Picture

[illegible]



# FCO Senior Leadership COP Brief

# FEMA-4615-DR-NY

## INDIVIDUAL ASSISTANCE SUMMARY

Valid Registrations  
85K

Individuals and Households Program  
\$179M

Small Business Admin Loans  
\$183M

Housing Assistance  
\$162M

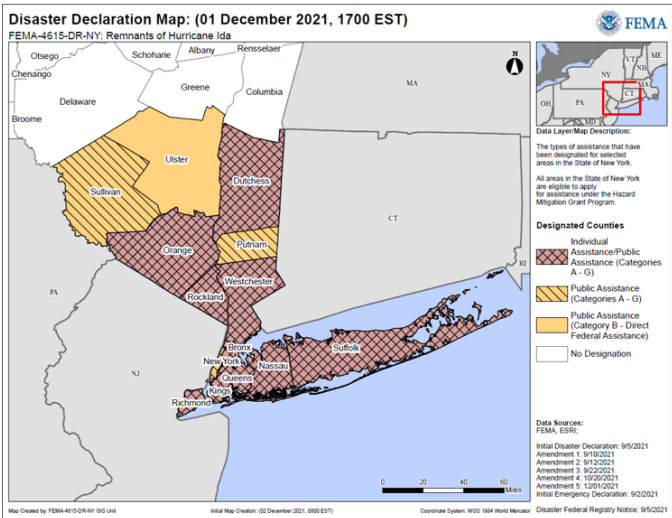
NFIP Payouts  
\$100M

Other Needs Assistance  
\$17M

Transitional Shelter Assistance  
N/A

## INCIDENT SUMMARY

On September 5, 2021, a Major Disaster Declaration (FEMA-4615-DR-NY) was approved for the State of New York. Ten counties designated for Individual Assistance; 14 counties designated for Public Assistance Categories A-G; 1 County Category B DFA. All areas in the State of New York are eligible to apply for assistance under the Hazard Mitigation Grant Program. Five amendments have been issued.



## PUBLIC ASSISTANCE SUMMARY

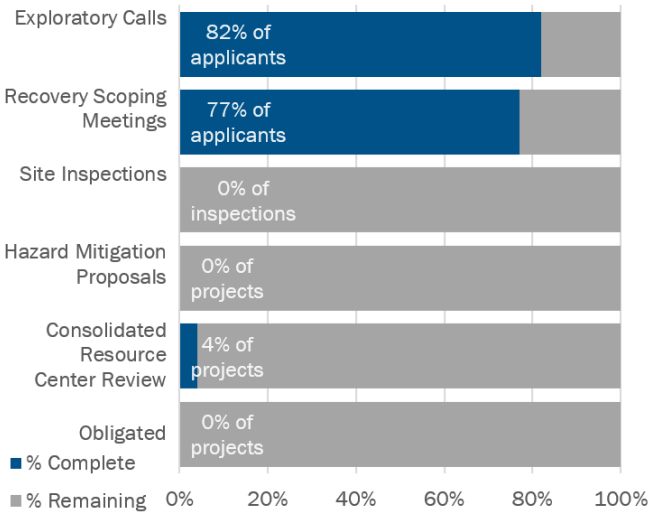
Applicants 272

Projects 204

\$ Obligated \$0

Life of Disaster \$100M

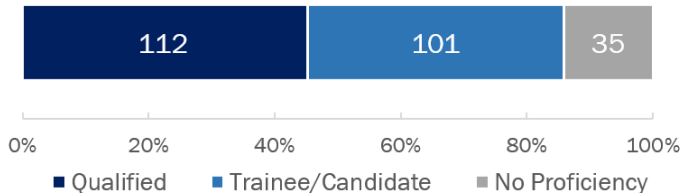
### % of Phase Complete



## STAFF SUMMARY

Total Staff: 248 | Coach/Evaluators: 72

### Staff by Proficiency Level



## FCO ASSESSMENT

### Priorities

- **Focus:** Coordinate federal family and whole community recovery resources to address shortfalls and build resilience
- **Infrastructure:** Restored, modernized, hardened and resilient systems

### Outcomes

- **Infrastructure:** Water systems, dams, levees, and service capacities have been repaired, modernized, and strengthened for future disasters

## TRANSITION TIMELINE

Individual Assistance thru APR '22

Public Assistance thru APR '23

Hazard Mitigation thru APR '23

Interagency Recovery Coordination thru TBD

# FCO Senior Leadership COP Brief

## Recovery Support Functions (RSF)

Recovery Outcomes		
Housing	<b>Housing: Adequate, resilient, accessible, and affordable housing</b>	
	1	All survivors whose primary residences were damaged or destroyed or were displaced by the disaster have returned and re-established residence in permanent housing within the affected community
	2	Survivors can afford post-disaster permanent housing units within the affected community without post-disaster assistance
	3	Post-disaster permanent housing units in the affected community meet or exceed recognized residential codes and standards and incorporate recommended mitigation measures appropriate to the area's hazards (e.g., flooding, fire, high winds), or include resiliency measures
Economic	<b>Economic: Sustainable, diversified and resilient economy</b>	
	1	Business activities are resumed and restored, including those local and marginalized businesses and major employers
	2	Local and state government ability to facilitate and regulate business activities is restored
	3	Tax base and revenue streams from businesses are restored
	4	Communities have Comprehensive Economic Development Strategies that measures the recovery process
	5	Financial activities essential to credit and insurance coverage and flows are restored
Community Recovery	<b>Community Recovery: Resilient recovery of SLTT communities</b>	
	1	Community Conditions Assessment + Community Profiles
	2	Status of emergency plans, such as the Mitigation plan and Pre-Disaster Recovery Plan
	3	Community engagement and communication strategy is in place for long-term recovery plan or strategy
	4	Mitigation and recovery projects have been implemented
	5	Inclusive communications strategy developed for long-term recovery planning or strategy

Recovery Outcomes		
Infrastructure	<b>Infrastructure: Restored, modernized, hardened and resilient systems</b>	
	1	Power systems and fuel delivery services have been repaired, modernized, and strengthened for future disasters
	2	Water systems, dams, levees, and service capacities have been repaired, modernized, and strengthened for future disasters
	3	Communications systems and services have been repaired, modernized, and strengthened against future disasters
	4	Public and private transportation systems, to include those supporting marginalized areas are repaired and reliable
	5	Government and PNP facilities have been repaired, modernized and strengthened for future disasters
Health & Social Services	<b>HSS: Sustainable and resilient health education and social service systems</b>	
	1	Households have safe drinking water and no hazardous and toxic materials
	2	Healthcare providers have resumed capacity to meet chronic or long-term health needs, as well as primary and emergency care
	3	Ensure survivors are provided necessary behavioral health and disaster case management services.
	4	Social Assistance programs that support vulnerable populations, e.g., have resumed delivery of financial and other material support and services to vulnerable segments of the community's population
	5	Schools are fully operational & providing full academic programs and can provide a safe, sanitary, and supportive environment
Natural Cultural Resources	<b>NCR: Restored, preserved, risk-resistant and resilient resources</b>	
	1	Natural resources in the affected community, to include socially marginalized, have been restored to protect people and ecosystems
	2	Resources associated with entertainment, education, recreation, and tourism have been repaired, and public accessibility restored
	3	Access to raw material and other commodities that sustain the local economy has been restored
	4	Sites and artifacts associated with the community's heritage and identity have been stabilized/protected, and public accessibility to these sites has been restored



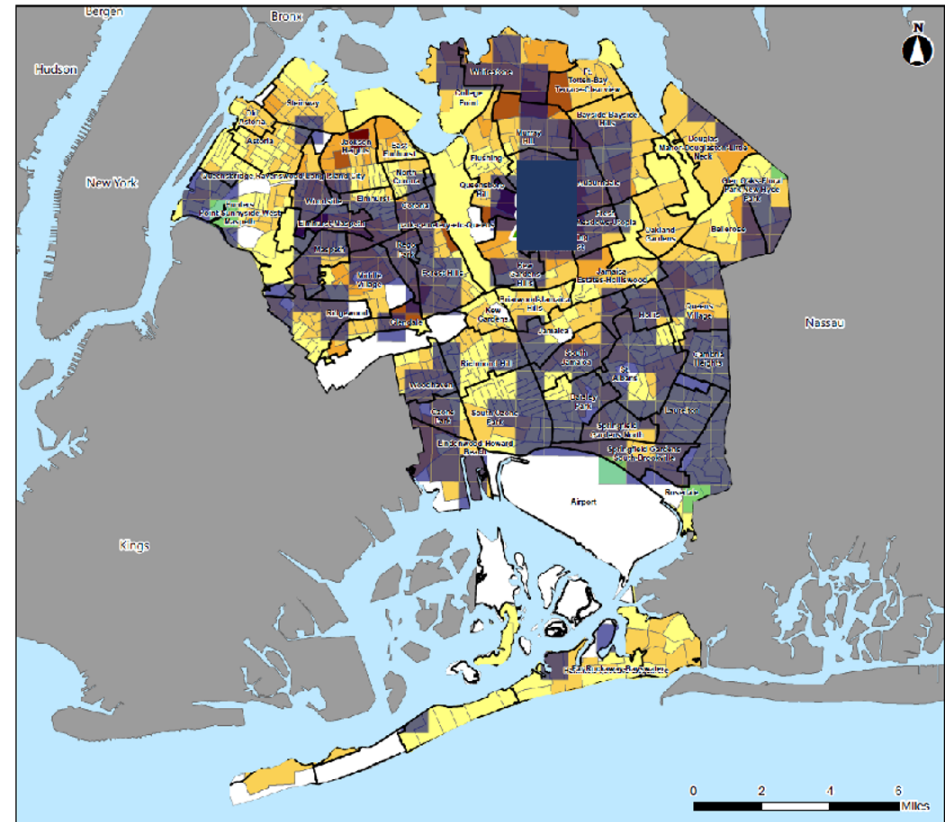
# FCO Senior Leadership COP Brief

## Recovery Outcomes

INFRASTRUCTURE: Restored, modernized, hardened and resilient systems

Outcome Indicator (H2): Water systems, dams, levees, and service capacities have been repaired, modernized, and strengthened for future disasters

- CONTEXT/EXISTING CONDITIONS
- IMPACTS
- HM
- INTERAGENCY RECOVERY COORDINATION
- STATE / LOCAL PLANS
- EQUITY
- DATA ANALYTICS
- CLIMATE RESILIENCE



Map Created by: DLR 4615 NY GIS Unit

Initial Map Creation: 177 September 2021 1500 PDOT

Coordinate System: NAD83 1984 World Mercator



# FEMA

Helping people before, during, and after disasters.



*Scan to subscribe to this briefing.*