

The Disaster Center is dedicated to the idea that disaster mitigation is cost effective and individuals pursuing their own interest are the greatest potential force for disaster reduction.

Please consider making a small donation to the Disaster Center



When disaster mitigation is cost effective, we are on the road to bringing disasters to an end.



FEMA

Daily Operations Briefing

Friday, March 22, 2019

8:30 a.m. EDT

Significant Activity – Mar 21-22



FEMA

Significant Events: Flooding – Central U.S.

Tropical Activity: No activity affecting U.S. interests

Significant Weather:

- Freezing rain possible – Northeast
- Heavy snow possible – Central Rockies and Northeast

Declaration Activity:

- Major Disaster Declaration approved – Nebraska
- Major Disaster Declaration request – Iowa

Flooding – Central U.S.



FEMA

Current Situation

Flooding concerns continue for the Missouri River basin. FEMA Region VII RRCC is maintaining situational awareness of the Missouri and Mississippi Rivers.

Lifeline Impacts

Safety and Security:

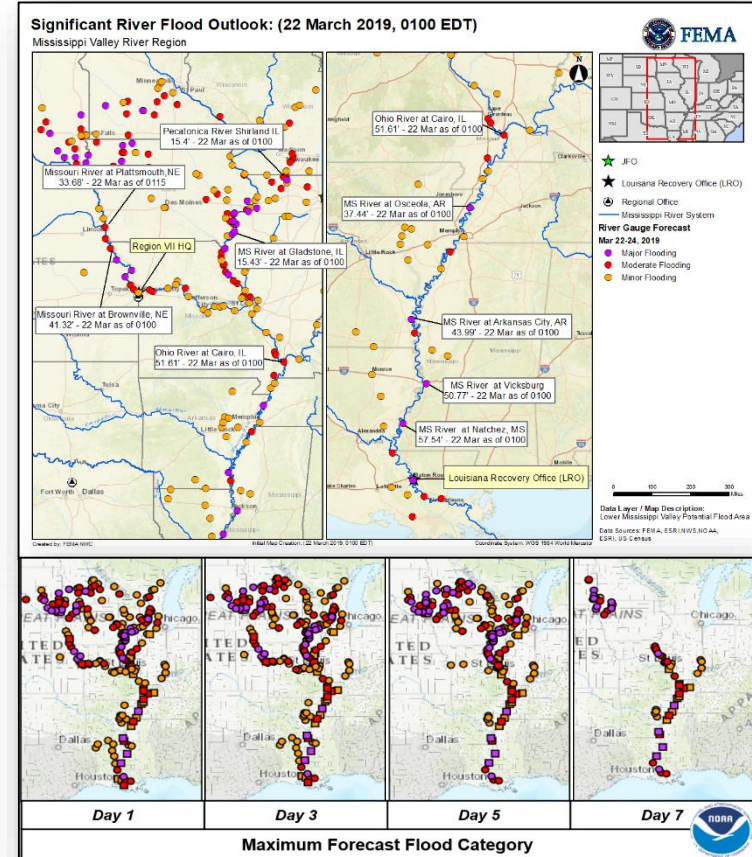
- MO: Rushville-Sugar Lake levee (Buchanan County) overtopped and breached impacting communities of Winthrop and Lewis and Clark Village, which were evacuated prior to breach
- KS: Private levees Henry Pohl (Atchison County) and Unit 500-R (Doniphan County) have overtopped, primarily impacting agricultural land

Food, Water, and Sheltering:

- Evacuations ongoing throughout impacted flood areas
- Portions of St. Joseph, MO, Elwood, KS, and Wathena, KS along the Missouri River are under voluntary evacuations (*combined pop. 79k*)
- Shelters:
 - KS: shelters have closed
 - NE: 8 open with 317 (+49) occupants
 - IA: 4 open with 42 (-2) occupants
 - MO: 1 open with 12 occupants (*Region VII SLB, as of 9:27 p.m. EDT*)
- NE: power restored to wells in Lincoln, voluntary water restrictions in effect

Transportation:

- Multiple road and bridge closed throughout impacted areas; detours in place
- US-50 closed at KS/MO state line, alternate routes available
- NE: 81 highways affected, 15 bridges significantly damaged



Flooding – Central U.S.



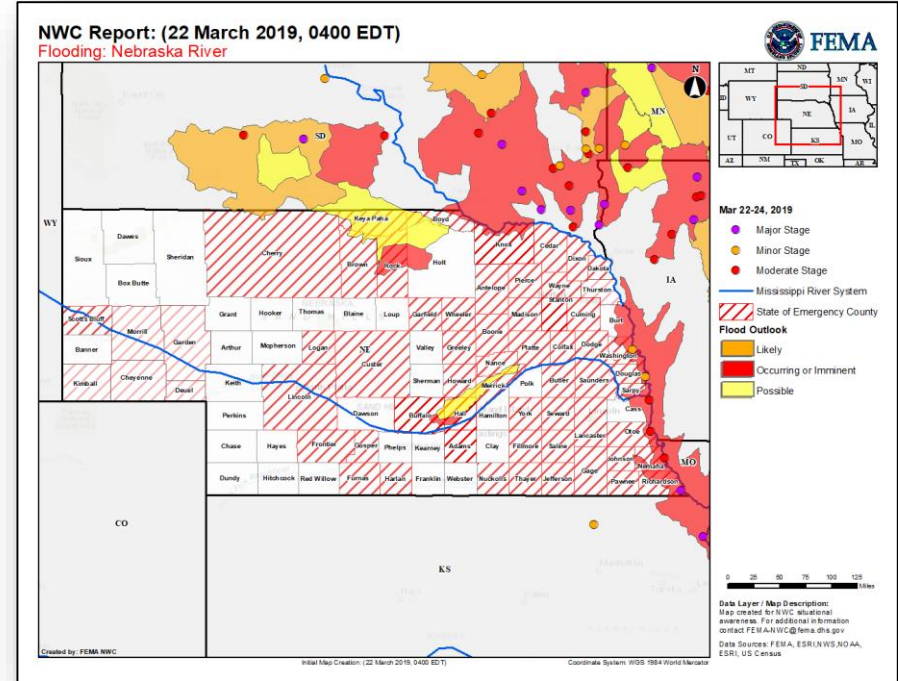
FEMA

State / Local Response

- NE and IA EOCs at Full Activation
- SD, KS, MS, TN, IL EOCs at Partial Activation
- States of Emergency (or equivalent) declared:
 - OH, WI, KS, NE, IA and MO
 - Tribal Nations in NE: Omaha Tribe, Ponca Tribe, Winnebago Tribe, Santee Sioux, and the Sac and Fox of the Missouri
 - Tribal Nation in IA: Sac and Fox of the Mississippi
- NE National Guard assisting with traffic control and security
- Major Disaster Declaration requested for IA

FEMA / Federal Response

- FEMA Region VII
 - RRCC at Level III (day shift only)
 - IMAT deployed to NE (assisting Winnebago Tribe of Nebraska)
 - LNOs deployed to IA EOC; LNO demobilized from NE
 - Volunteer Agency Liaison (VAL) deployed to NE EOC
- FEMA Region VIII
 - Denver MOC at Steady State, continues to monitor
 - LNO deployed to SD EOC
- Major Disaster Declaration approved for NE
- FEMA NWC at Steady State; continues to monitor



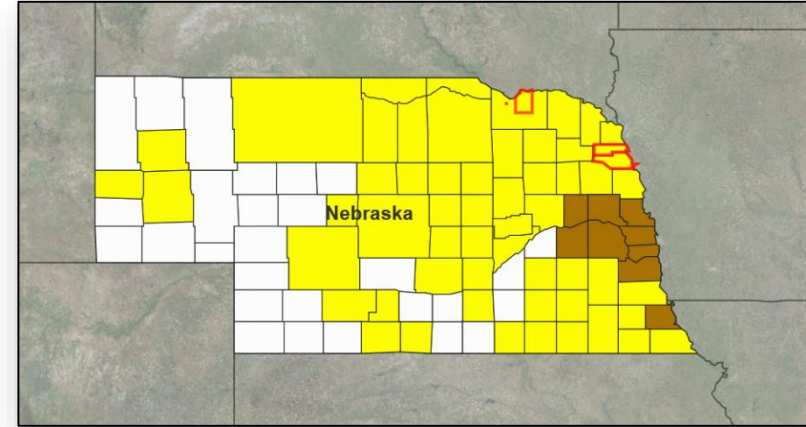
Declaration Approved



FEMA

FEMA-4420-DR-NE

- Major Disaster Declaration was approved on March 21, 2019 for the State of Nebraska
- For a severe winter storm, straight-line winds, and flooding, which occurred March 9, 2019 and continuing
- Provides:
 - Individual Assistance for 9 counties
 - Public Assistance (Categories A and B) for 65 counties and for the Santee Sioux Nation, Ponca Tribe of Nebraska, Omaha Tribe of Nebraska, Sac and Fox Nation, and Winnebago Tribe
 - Hazard Mitigation statewide
- FCO is Constance Johnson-Cage



- PA
- IA & PA
- Tribal Boundary

A	B	C	D	E	F	G	H
Debris Removal	Emergency Protective Measures	Road Systems & Bridges	Water Control Facilities	Public Buildings & Contents	Public Utilities	Parks, Recreational Areas & Other Facilities	Fire Management

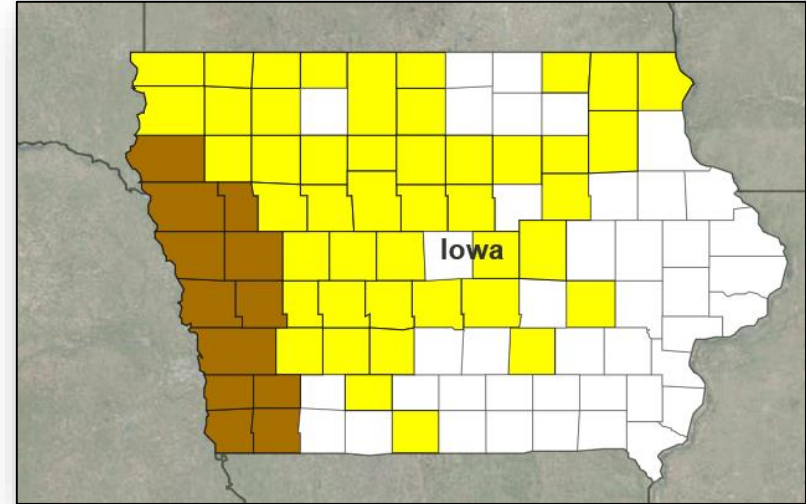
Declaration Request



FEMA

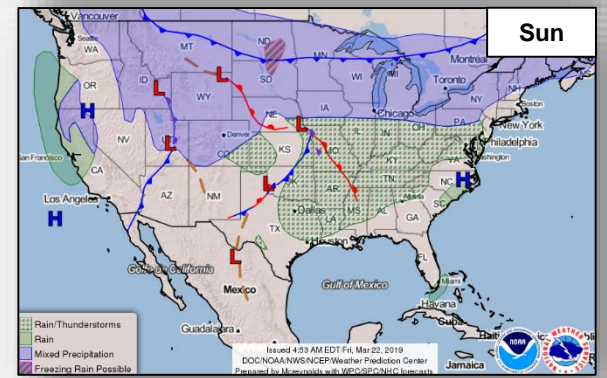
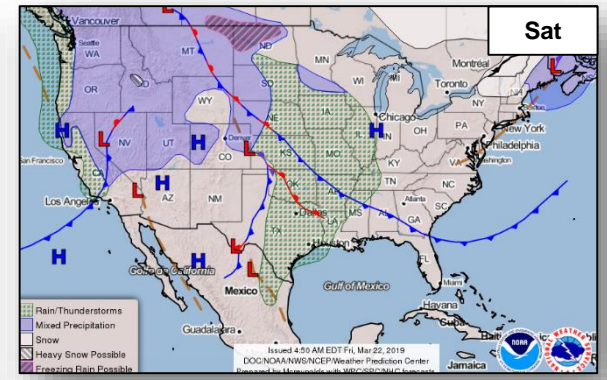
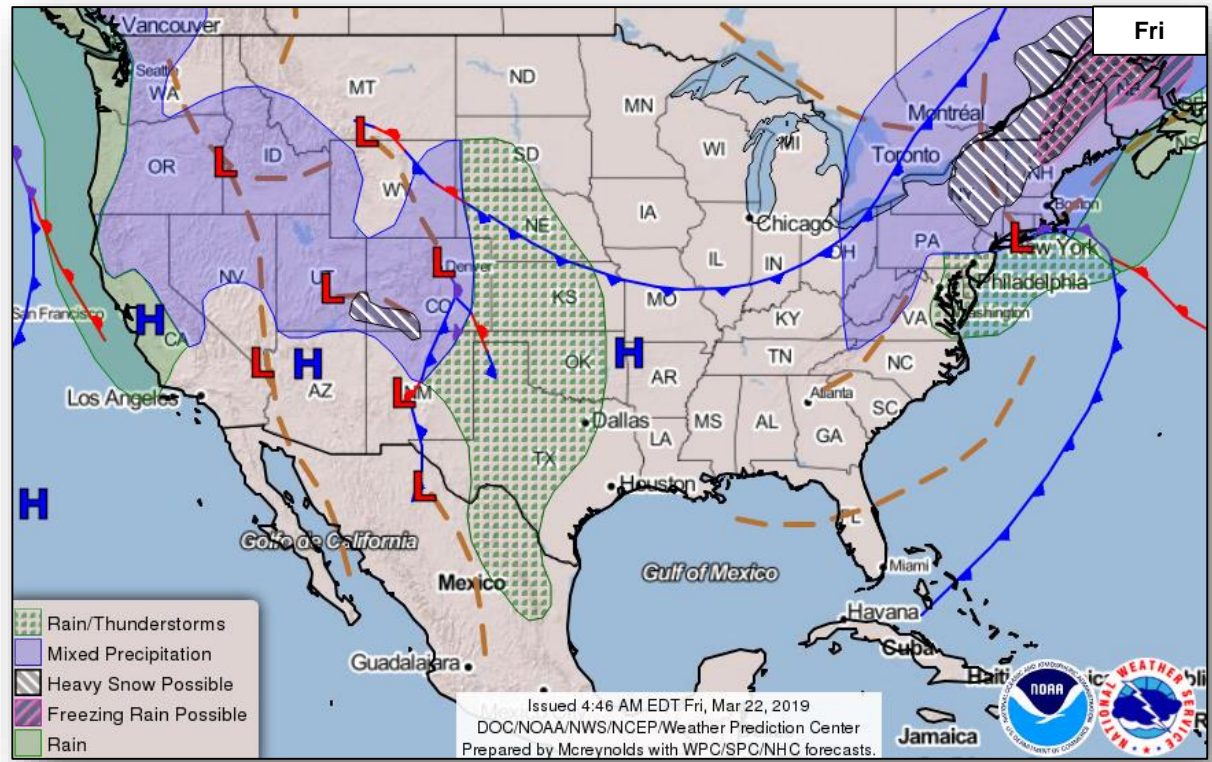
Iowa

- On March 21, 2019, the Governor requested an expedited Major Disaster Declaration
- For severe storms and flooding beginning on March 12, 2019 and continuing
- Requesting:
 - Individual for 12 counties
 - Public Assistance for 57 counties
 - Hazard Mitigation statewide



- PA
- IA & PA

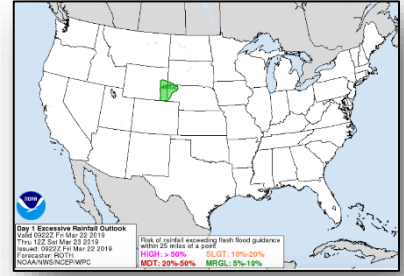
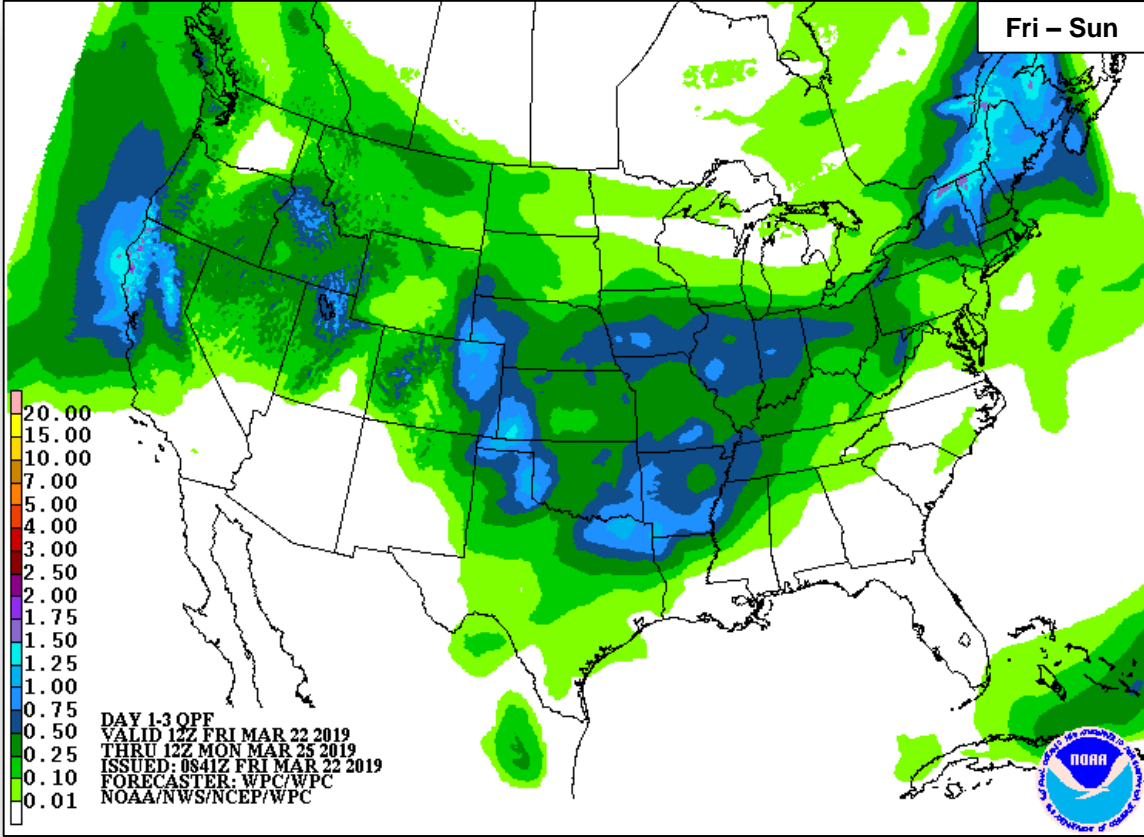
National Weather Forecast



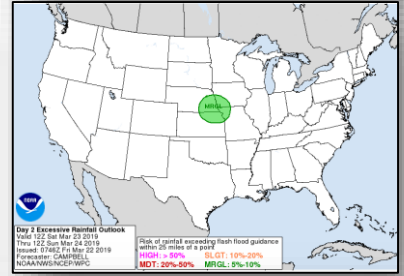
Precipitation Forecast



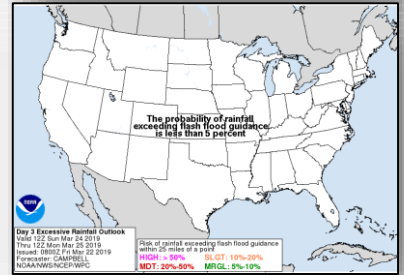
FEMA



Fri



Sat

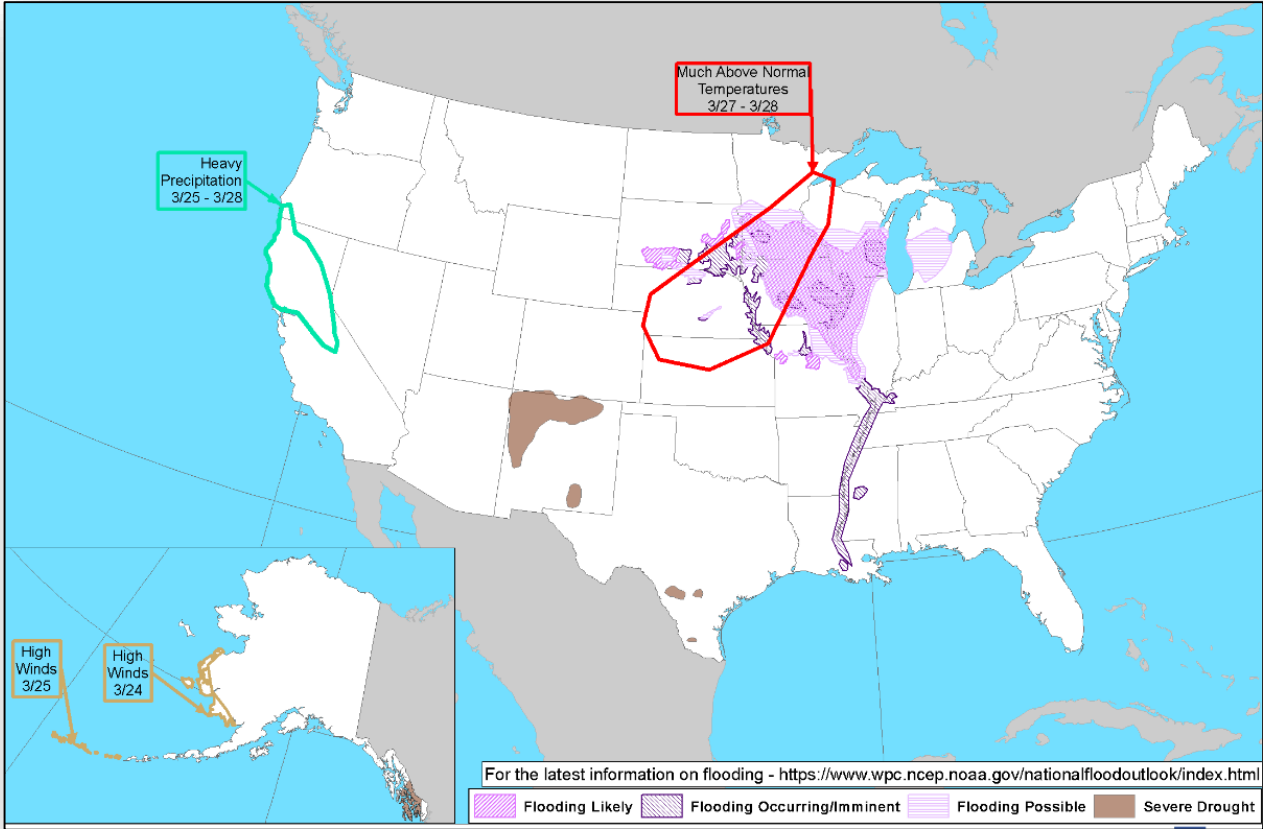


Sun

Hazards Outlook – Mar 24-28



FEMA



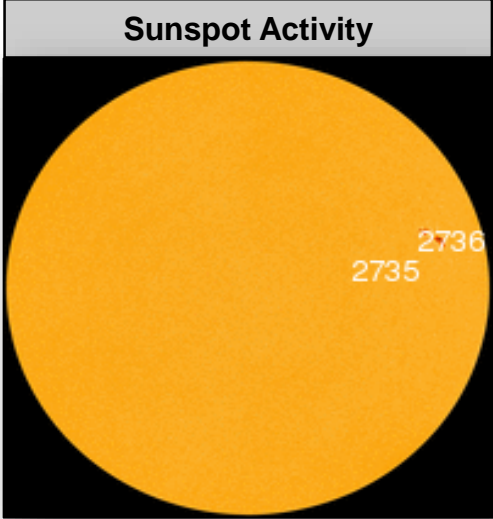
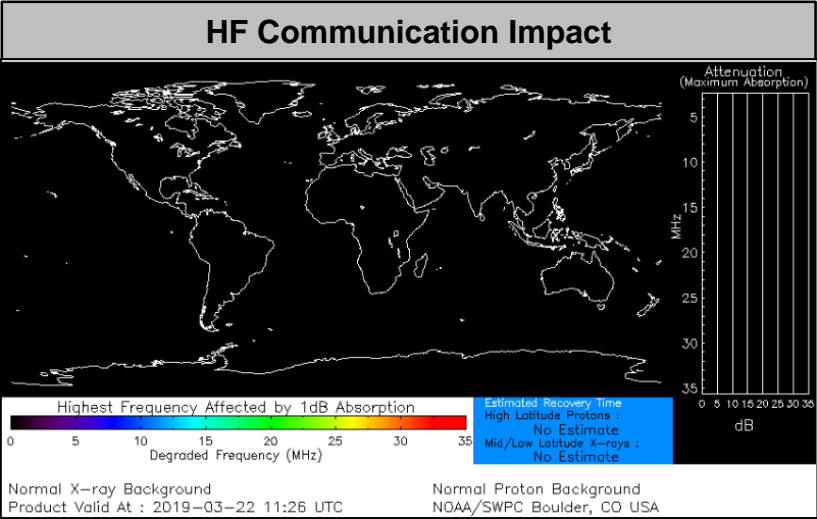
Space Weather



FEMA

	Space Weather Activity	Geomagnetic Storms	Solar Radiation	Radio Blackouts
Past 24 Hours	None	None	None	None
Next 24 Hours	None	None	None	None

For further information on NOAA Space Weather Scales refer to: <http://www.swpc.noaa.gov/noaa-scales-explanation>



Joint Preliminary Damage Assessments



FEMA

Region	State / Location	Event	IA/PA	Number of Counties		Start – End
				Requested	Complete	
IV	AL	Severe Weather and Flooding February 6-22, 2019	IA	3	3	3/11 – 3/20
			PA	11	2 (+2)	3/11 – TBD
	KY	Severe Weather and Flooding February 6, 2019	IA	0	0	N/A
			PA	58	39 (+10)	3/11 – TBD
	TN	Severe Weather and Flooding February 6, 2019	IA	8	8	3/12 – 3/20
			PA	61	60 (+26)	3/12 – TBD
V	OH	Flooding and Severe Storms February 5-13, 2019	IA	0	0	N/A
			PA	20	20 (+3)	3/11 – 3/21
IX	Navajo Nation	Winter Storms February 20-23, 2019	IA	0	0	N/A
			PA	1	0	3/20 – TBD
	FSM (Chuuk and Yap)	Typhoon Wutip February 19-22, 2019	IA	0	0	N/A
			PA	2	0	3/20 – TBD

Disaster Requests & Declarations



FEMA

Declaration Requests in Process					Requests APPROVED (since last report)	Requests DENIED (since last report)
4	IA	PA	HM	Date Requested	1	0
La Jolla Band of Luiseño Indians – DR Severe Storms, Flooding, Landslides, and Mudslides		X	X	March 8, 2019		
VT – DR (Appeal) Severe Winter Storm		X	X	March 14, 2019		
Cahuilla Band of Indians – DR Severe Storms and Floods		X	X	March 15, 2019		
NE – DR Severe Winter Storm, Straight-line Winds, and Flooding	X	X	X	March 19, 2019	Declared March 21, 2019	
IA – Severe Storm and Flooding	X	X	X	March 21, 2019		

Readiness – Deployable Teams and Assets



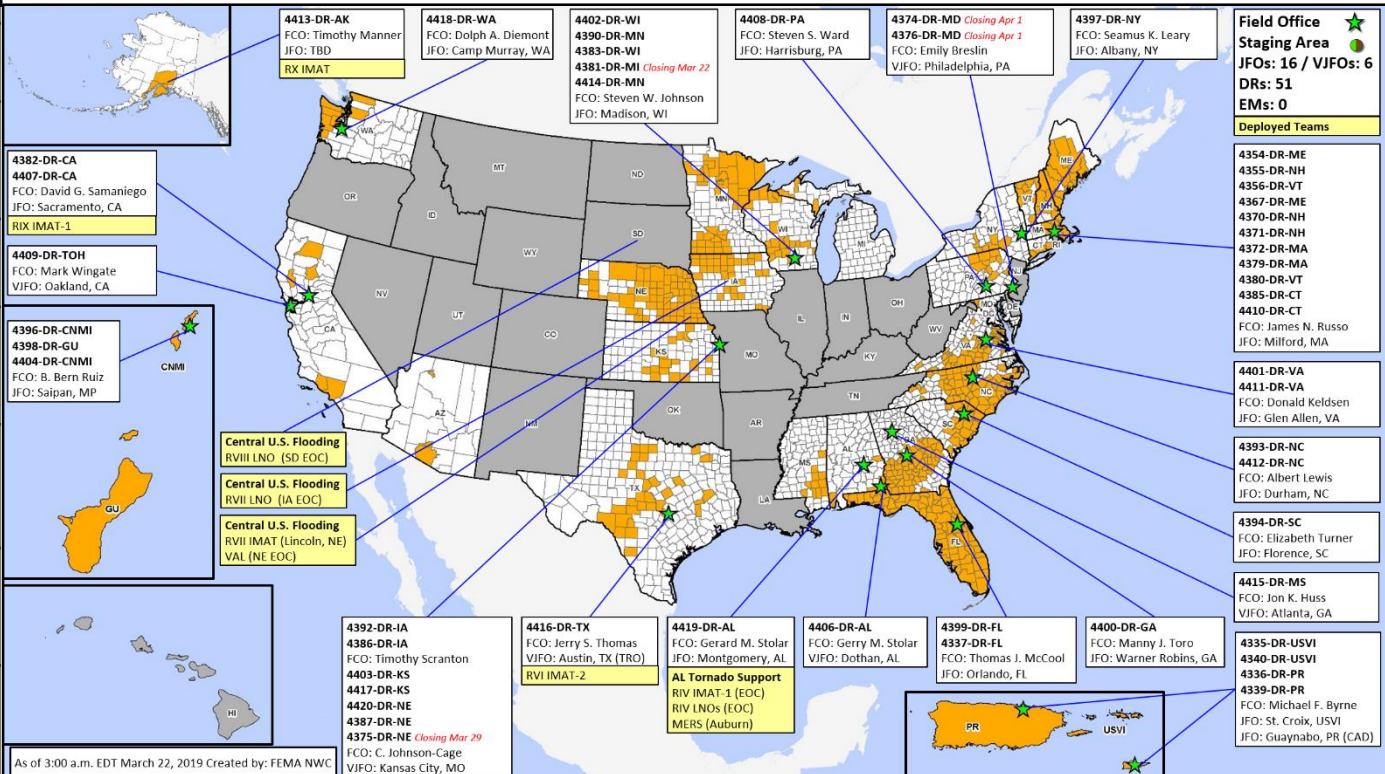
FEMA

National and Regional Resources

IM Workforce	Strength:	▲ 12,991
	Available:	▼ 3,924 / 30%
	Other:	3,550
	Deployed:	▲ 5,517
N-IMAT	East:	Available
	West:	Available
	Crisis:	Available
Regional IMAT (4-6 Teams)	Assigned:	13
	Available:	6
	PMC / NMC:	2
	Deployed:	5
N-ISB Teams (3 Teams)	Team A:	Available
	Team B:	Available
	Team C:	Available
US&R (>66%)	Assigned:	28
	Available:	26
	PMC / NMC:	2
	Deployed:	0
MERS (>66%)	Assigned:	36
	Available:	36 (+1)
	PMC / NMC:	0
	Deployed:	0 (-1)
FCO (=3 Type I)	Assigned:	29
	Available:	6
	PMC / NMC:	0
	Deployed:	23
FDRC (≥3)	Assigned:	12
	Available:	3
	PMC / NMC:	0
	Deployed:	9

Cadres with 25% or Less Availability

EHP 8% (34/456); ER 18% (10/57); FL 14% (23/162); HM 23% (254/1,105); IT 25% (163/645); LOG 20% (264/1,339); NDRS 25% (71/279); PA 7% (144/2,186); PLAN 22% (82/377); SAF 15% (8/54); SEC 8% (10/122)



FEMA Readiness – Activation Teams



FEMA

Status		Activated Team	Activation Level	Activation Times	Reason / Comments
NWC (5 Teams)	Steady State				
NRCC (2 Teams)	Available				Primary – Gold Team
HLT	Available				
RWC / MOCs (10 Regions)	Available				
RRCCs (10 Regions)	Available	Region VII	Level III	Day shift	Flooding

Backup Regions: VI, I, and V



FEMA

FEMA's mission is helping people before, during, and after disasters.

Click [here](#) to subscribe to this briefing.