

The Disaster Center is dedicated to the idea that disaster mitigation is cost effective and individuals pursuing their own interest are the greatest potential force for disaster reduction.

Please consider making a small donation to the Disaster Center



When disaster mitigation is cost effective, we are on the road to bringing disasters to an end.



FEMA

Daily Operations Briefing

Monday, February 2, 2015

8:30 a.m. EST

Significant Activity: Feb 1 – Feb 2



Significant Events: No significant activity

Significant Weather:

- Heavy snow possible - Northeast
- Snow – Northern Intermountain to Northeast
- Freezing rain possible – Mid-Atlantic
- Rain and snow – Northern Intermountain to Central Great Basin; Tennessee Valley to Mid-Atlantic
- Elevated Fire Weather Areas / Red Flag Warnings: None
- Space Weather: Past 24 hours – minor, G1 geomagnetic storms occurred; next 24 hours – minor, G1 Geomagnetic storms predicted

FEMA Readiness: Region IX RWC will return to Watch/Steady State at 8:00 am PST

Big Creek Barrier Dam, IA (*Monitoring*)



Situation

- USACE declared a “Condition B” emergency (“potential failure situation developing”) because pump Station at Big Creek Barrier Dam is not functional
- Dam located on Des Moines River at Saylorville near Polk City, IA (pop: 3k)
- Current level is 837ft; any significant rainfall may cause water to rise to/above 850 feet, one foot higher than the 2010 high water event

Potential Impacts at/above 850 feet:

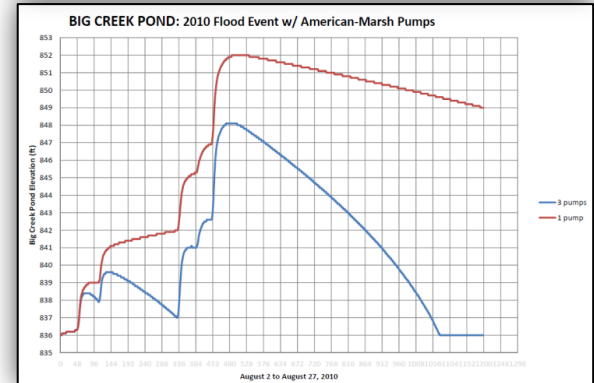
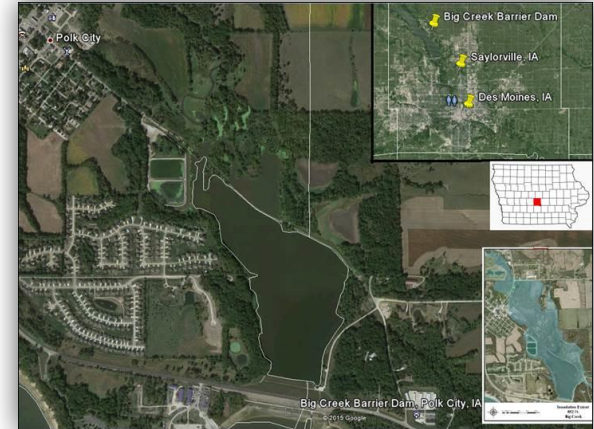
- Key water supply to Polk City goes out of service
- North access road and Barrier Dam Pump Station road inundated
- Only agricultural/private property will be impacted by flooding; no homes expected to be impacted (*See maps on next slide*)

Repairs:

- Repairs to pump station are underway; full restoration expected in July
- Supplemental pumping to be in place by April; will provide 1/3 capacity (*Graphic on right*)
- Until full restoration in July, there is an increased risk of flooding in Big Creek Pond area

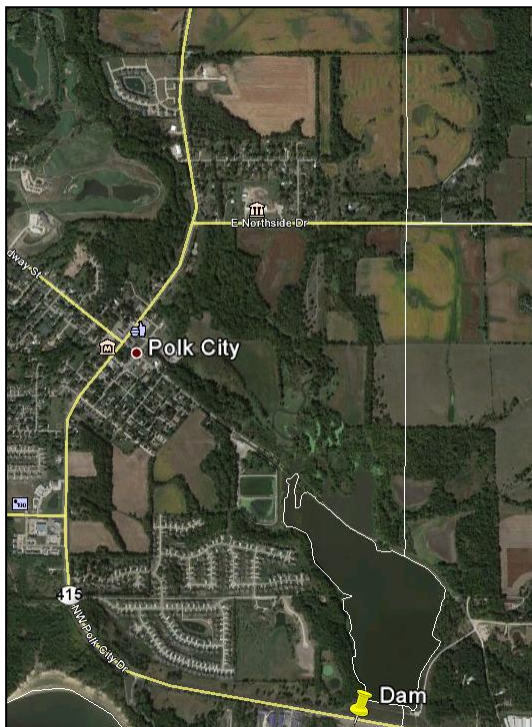
Response:

- IA EOC remains at Normal Operations; no shortfalls reported
- FEMA Region VII remains at Watch/Steady State; no requests for FEMA assistance
- FEMA NWC is monitoring; will provide monthly updates, or as required



Graphic above compares a fully operational station (3 pumps) hydrograph to a single pump hydrograph for the flood event of 2010.

Big Creek Barrier Dam, IA *(Monitoring)*



Currently at 837ft

Google Earth



Inundation Extent at 850ft

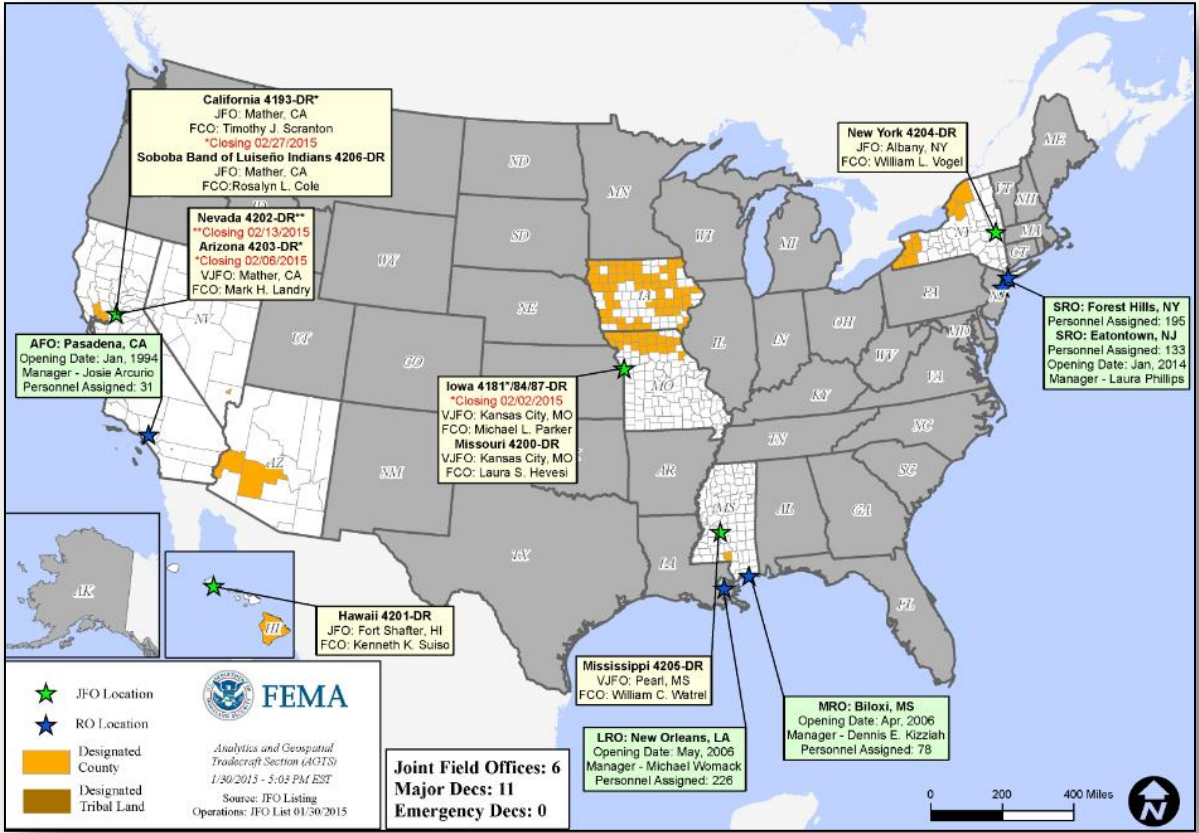
USACE Map



Inundation Extent at 852ft

USACE Map

Open Field Offices as of Feb 2

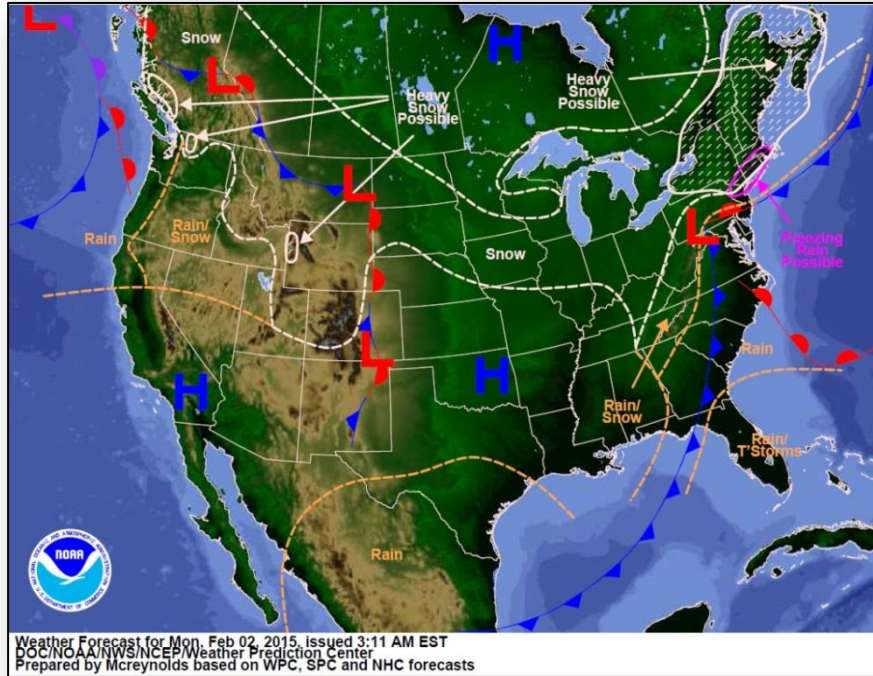


Disaster Requests & Declarations

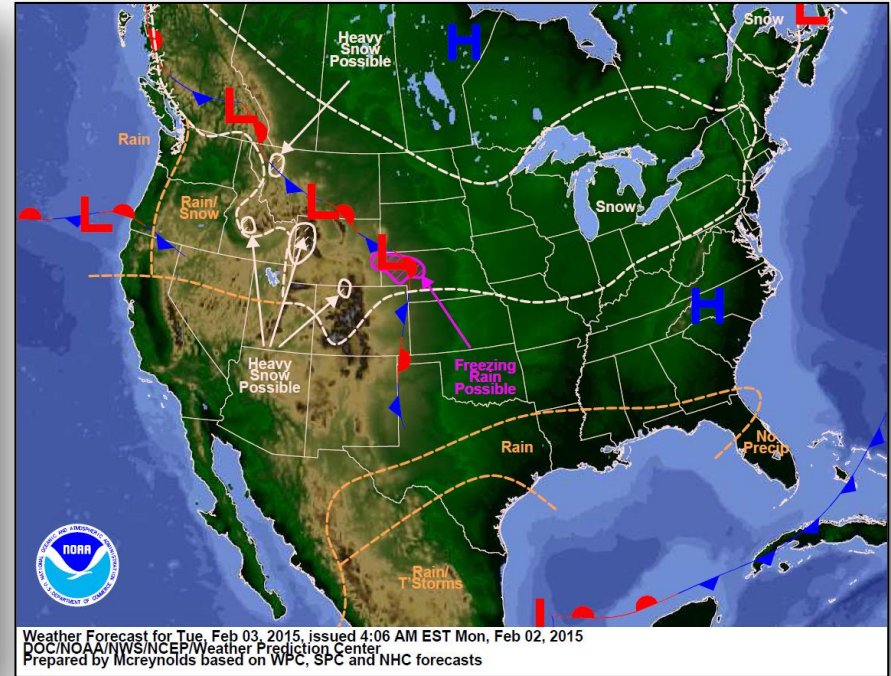


Declaration Requests in Process		Requests APPROVED (since last report)	Requests DENIED (since last report)
1	Date Requested	0	0
Vermont – DR Severe Winter Storm	January 23, 2015		

National Weather Forecast

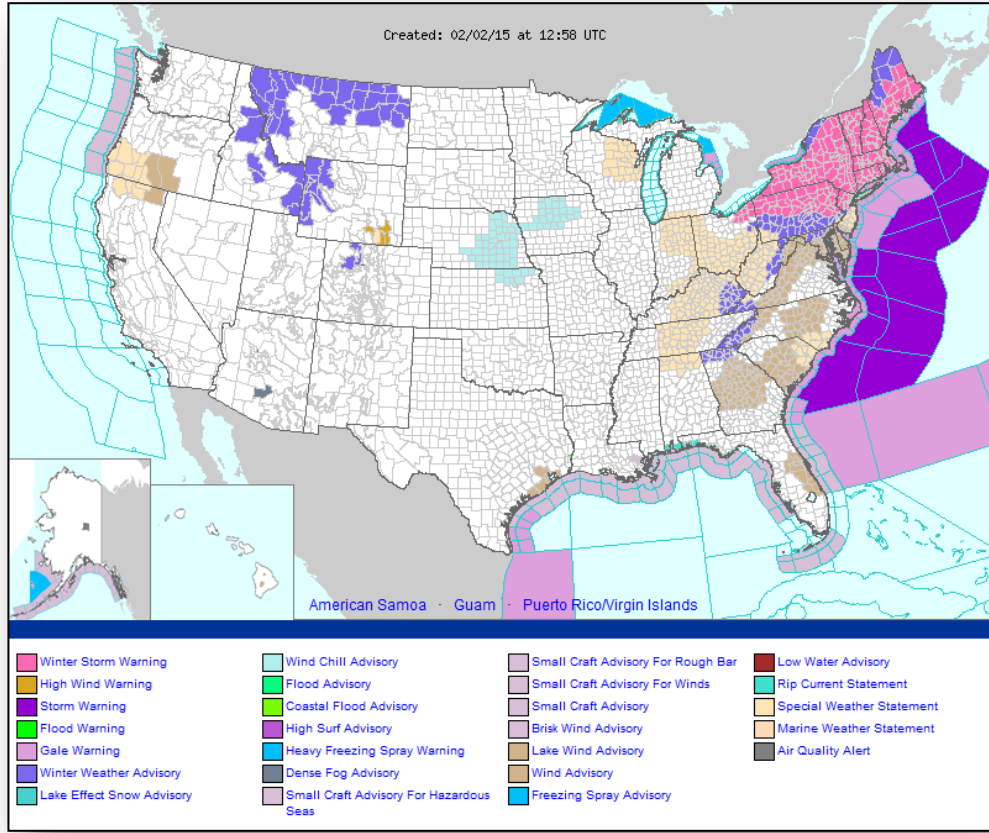


Today

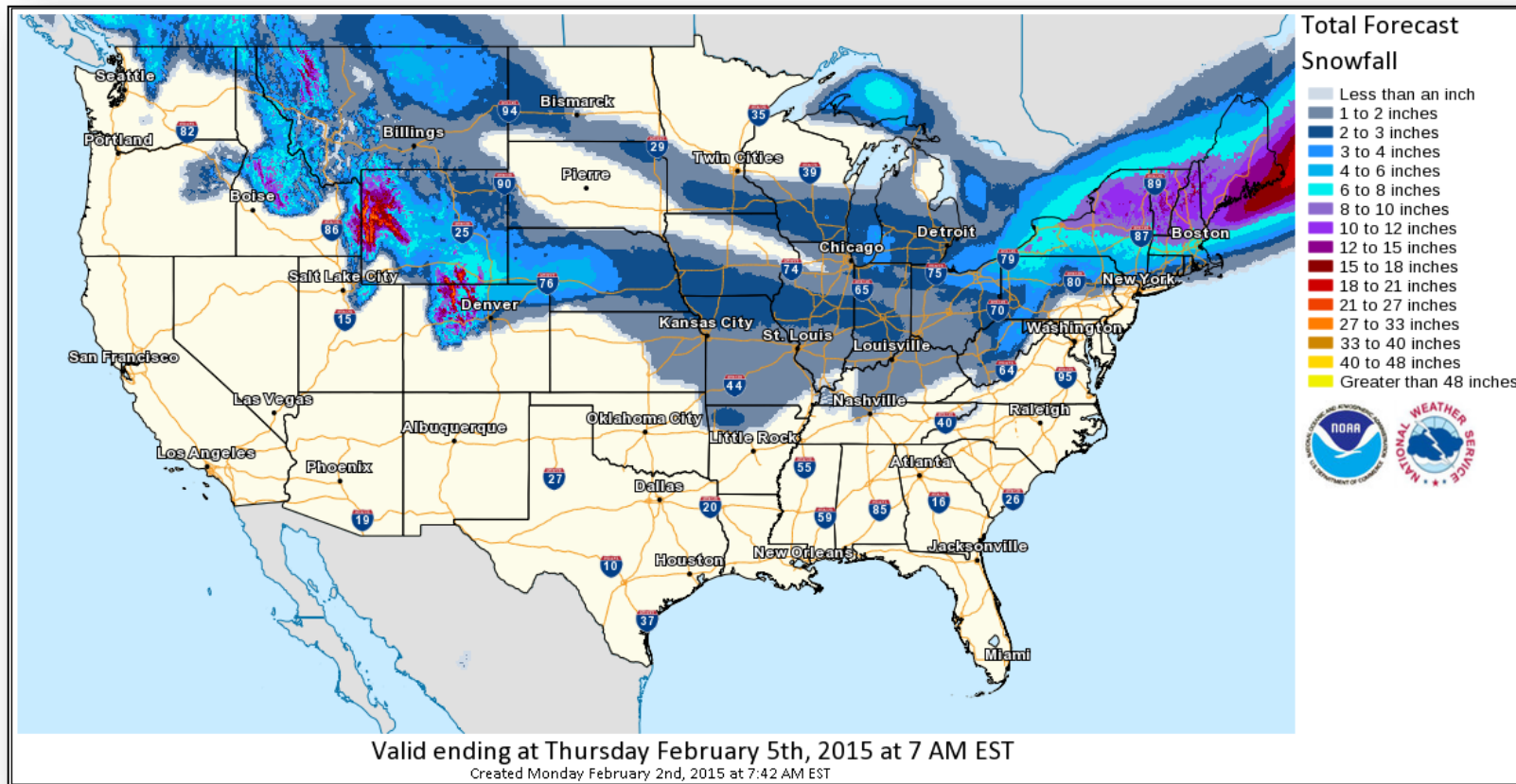


Tomorrow

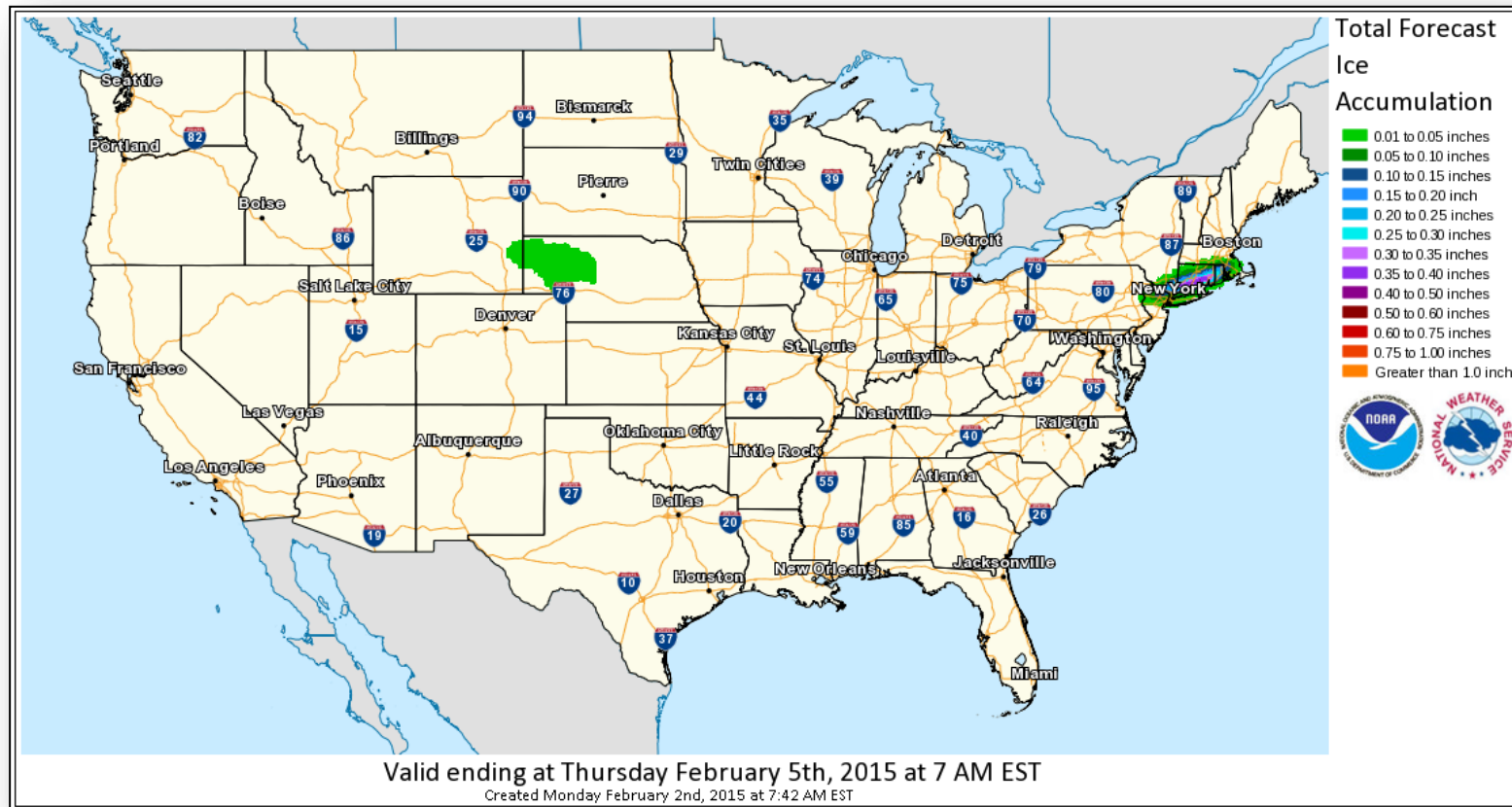
Active Watches/Warnings



Total Forecast Snowfall



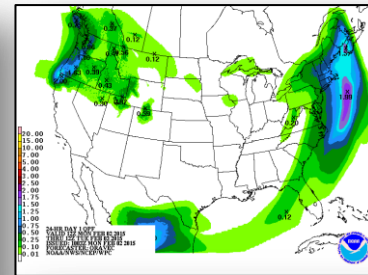
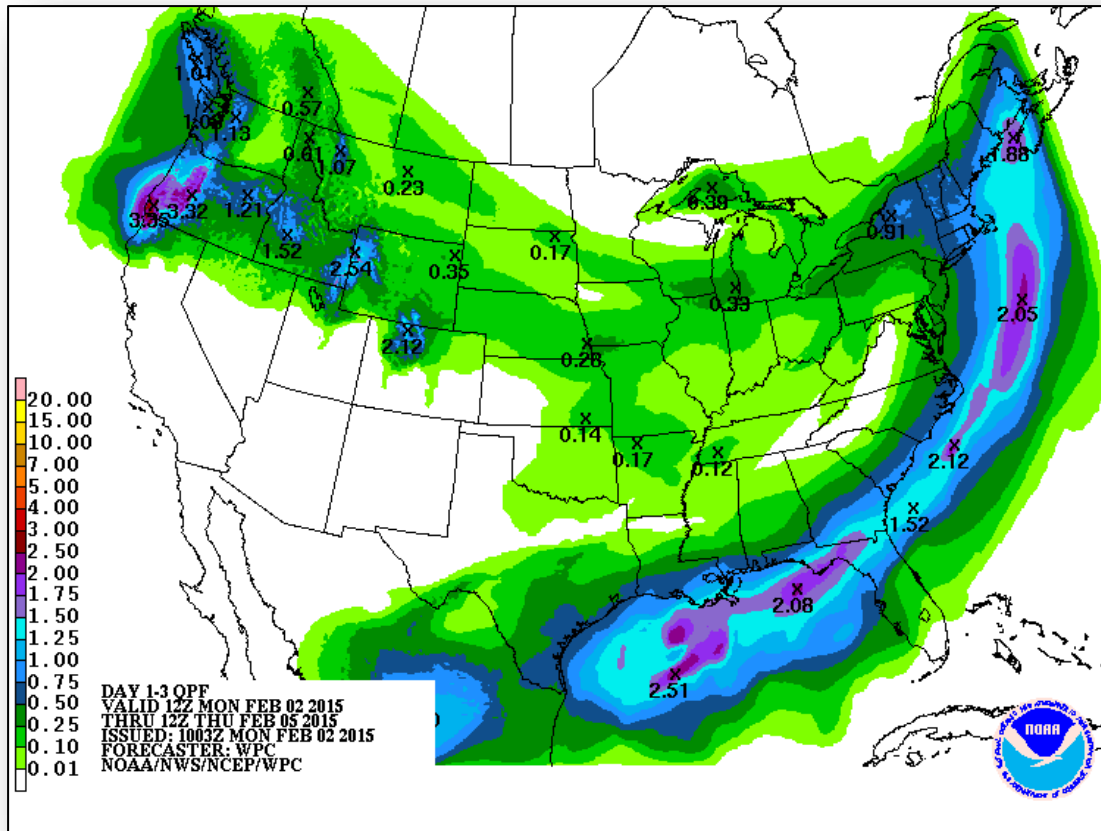
Total Forecast Ice



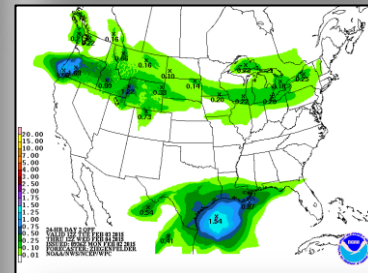
Precipitation Forecast – 3 Day



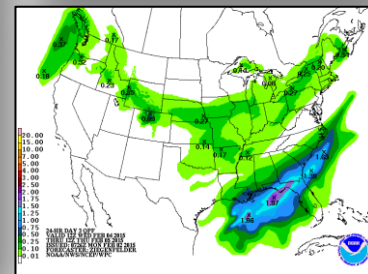
FEMA



Day 1



Day 2



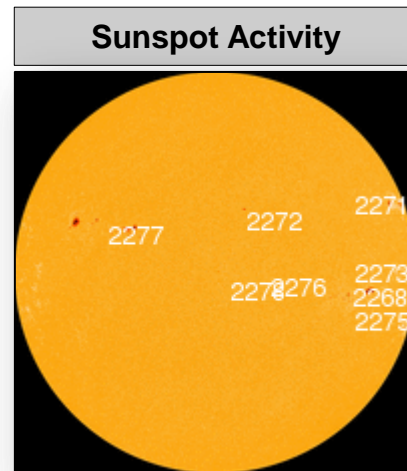
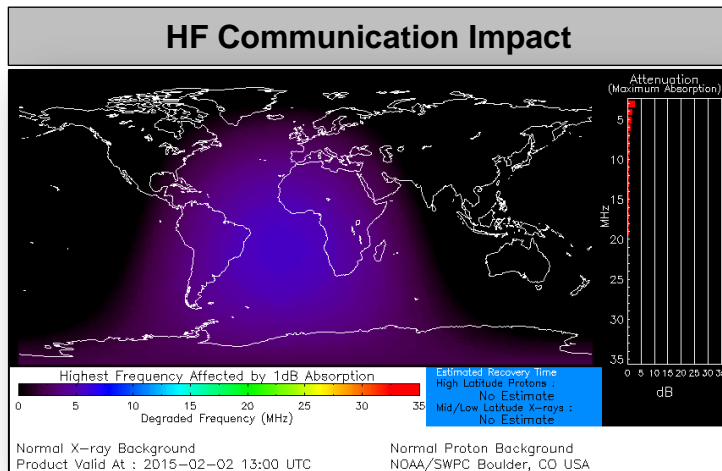
Day 3

Space Weather



FEMA

NOAA Scales Activity (Range: 1/minor to 5/extreme)	Past 24 Hours	Current	Next 24 Hours
Space Weather Activity:	Minor	None	Minor
• Geomagnetic Storms	G1	None	G1
• Solar Radiation Storms	None	None	None
• Radio Blackouts	None	None	None



FEMA Readiness – Deployable Teams /Assets



Deployable Teams/Assets								
Resource	Status	Total	FMC Available		Partially Available	Not Available	Detailed Deployed Activated	Comments
FCO		38	20	53%	0	1	17	OFDC Readiness: FCO Green Yellow Red Type 1 3+ 2 1 Type 2 4+ 3 2 Type 3 4 3 2 FDRC 3 2 1
FDRC		10	8	80%	0	0	2	
US&R		28	27	96%	0	1	0	NM-TF1 (Red – Personnel shortages)
National IMAT		3	1	33%	0	0	2	<ul style="list-style-type: none"> • IMAT East 1 – Deployed to FEMA HQ • IMAT East 2 – Deployed to GA
Regional IMAT		13	8	62%	0	4	1	<u>Not Mission Capable (NMC):</u> <ul style="list-style-type: none"> • Regions IV-3, V, VI-1 & IX-1 (personnel shortages) <u>Deployed</u> <ul style="list-style-type: none"> • Region IX-2 to CA • Region II returned to Region
MCOV		60	59	98%	0	1	0	<ul style="list-style-type: none"> • Green = 80 – 100% avail • Yellow = 60 – 79% avail • Red = 59% or below avail • Readiness remains 95%

FEMA Readiness – National/Regional Teams



National/Regional Teams									
Resource	Status	Total	FMC Available		Partially Available	Not Available	Deployed/ Activated	Comments	Rating Criterion
NWC		5	5	100%	0	0	Activated	Enhanced Watch (day shift only)	<div>• Green = FMC</div> <div>• Yellow = PMC</div> <div>• Red = NMC</div>
NRCC		2	344	89%	0	44	Not Activated		
HLT		1	N/A	N/A	0	0	Not Activated		
DEST							Not Activated		
RRCCs		10	10	100%	0	0	Not Activated		
RWCs/MOCs		10	10	100%	0	0	Not Activated	Region IX – Will return to Watch/Steady State at 8:00 am PST	



FEMA

FEMA's mission is to support our citizens and first responders to ensure that as a nation we work together to build, sustain, and improve our capability to prepare for, protect against, respond to, recover from, and mitigate all hazards.