

The Disaster Center is dedicated to the idea that disaster mitigation is cost effective and individuals pursuing their own interest are the greatest potential force for disaster reduction.

Please consider making a small donation to the Disaster Center



When disaster mitigation is cost effective, we are on the road to bringing disasters to an end.



# **FEMA**

## **Daily Operations Briefing**

**Sunday, June 14, 2015**

**8:30 a.m. EDT**

# Significant Activity: June 13-14



**Significant Events:** None

**Tropical Activity:**

- Atlantic – Disturbance 1/Medium (60%)
- Eastern Pacific – Hurricane Carlos
- Central Pacific – No tropical cyclones expected through late Monday night
- Western Pacific – No activity

**Significant Weather:**

- Severe thunderstorms possible – Southern Plains, Middle Mississippi Valley & Great Lakes
- Rain and thunderstorms – From the Southwest stretching across the Plains to the Mid-Atlantic
- Red Flag Warnings – CA & OR; Elevated/Critical Fire Weather areas – None
- Space Weather – Past 24 hours – Minor with R1 Level occurred; next 24 hours – none predicted

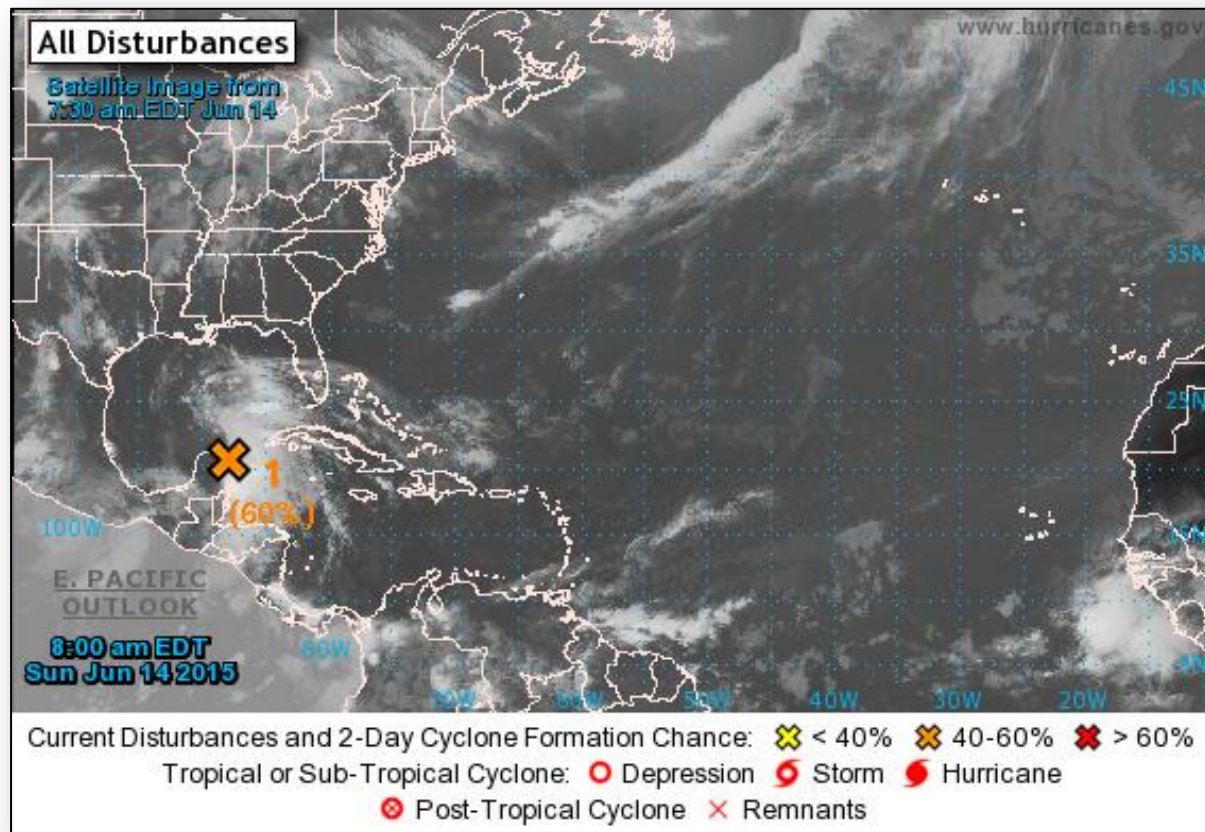
**Declaration Activity:** None

**FEMA Readiness:** No significant activity

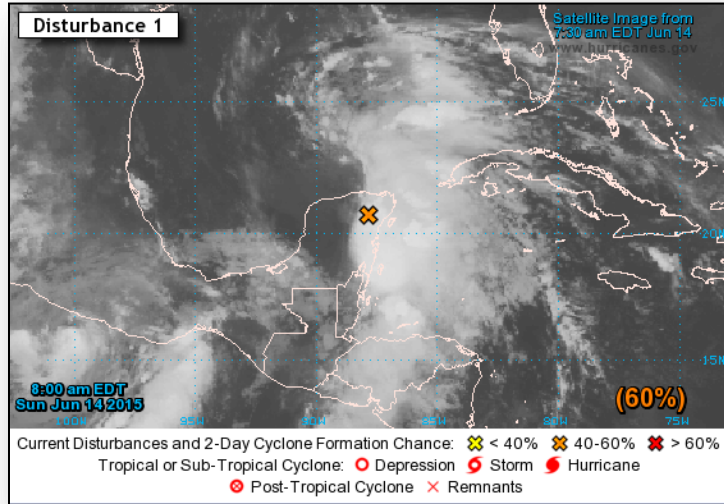
# 2-Day Tropical Outlook – Atlantic



FEMA



# Atlantic – Disturbance 1



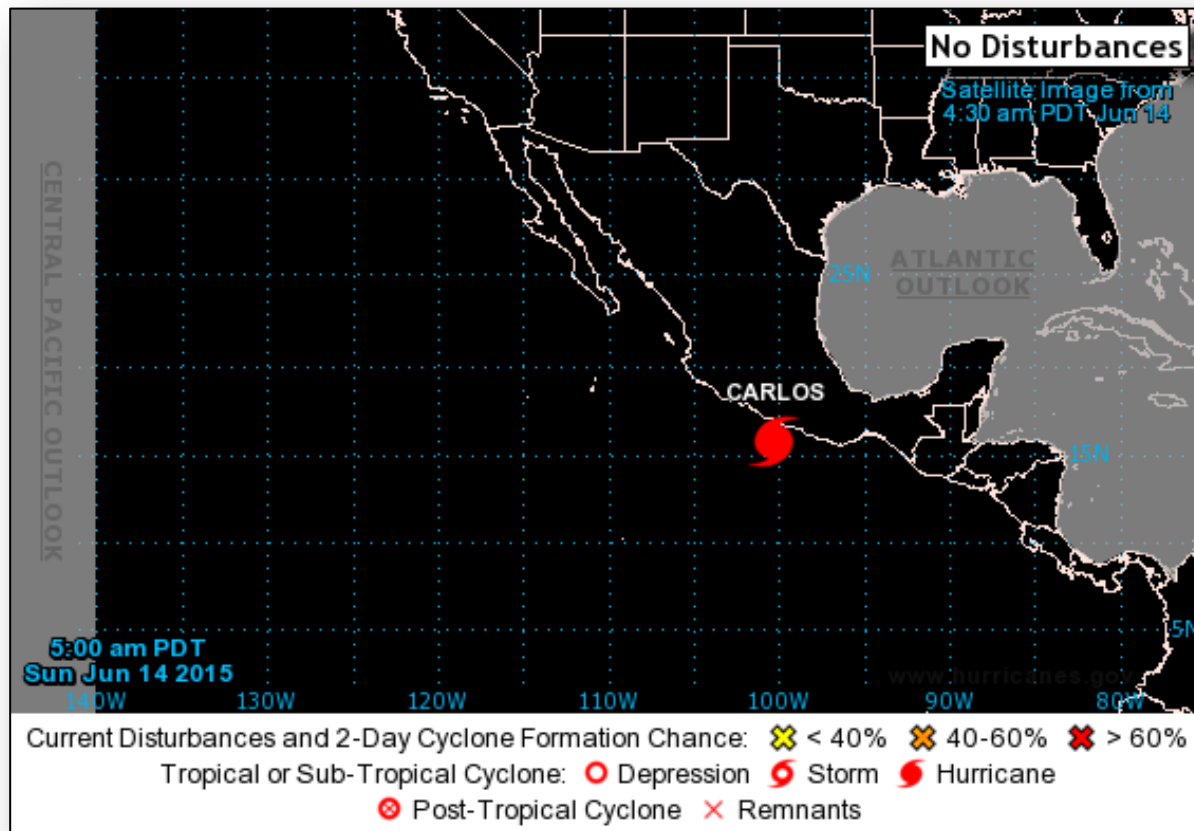
## Disturbance 1 (as of 8:00 a.m. EDT)

- Located across Yucatan peninsula producing showers & thunderstorms
- Development over next day or two as system moves NW into western Gulf of Mexico
- Air Force Reserve Hurricane Hunter aircraft is scheduled to investigate system this afternoon
- Heavy rains expected to continue over these areas today
- Formation chance:
  - Through 48 hours: Medium (Near 60%)
  - Through 5 days: Medium (Near 60%)

# 2-Day Tropical Outlook – Eastern Pacific



FEMA

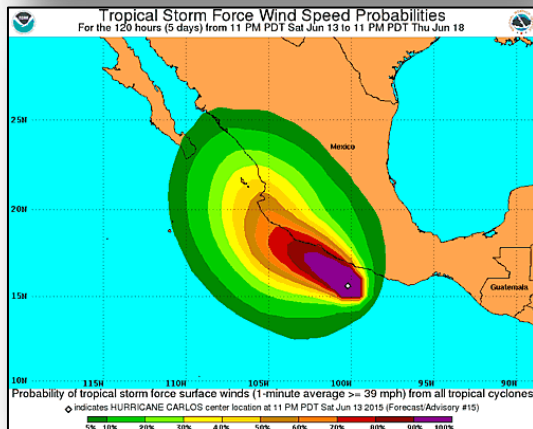


# Hurricane Carlos



## Hurricane Carlos: (Advisory #15A as of 8:00 a.m. EDT)

- Located 80 miles SSW of Acapulco, MX
- Movement remains nearly stationary SSW of Acapulco, MX
- Maximum sustained winds 75 mph
- Strengthening is forecast during next 48 hours
- Hurricane-force winds extend outward 30 miles
- Tropical storm-force winds extend 90 miles
- No U.S. coastal Watches or Warnings are in effect

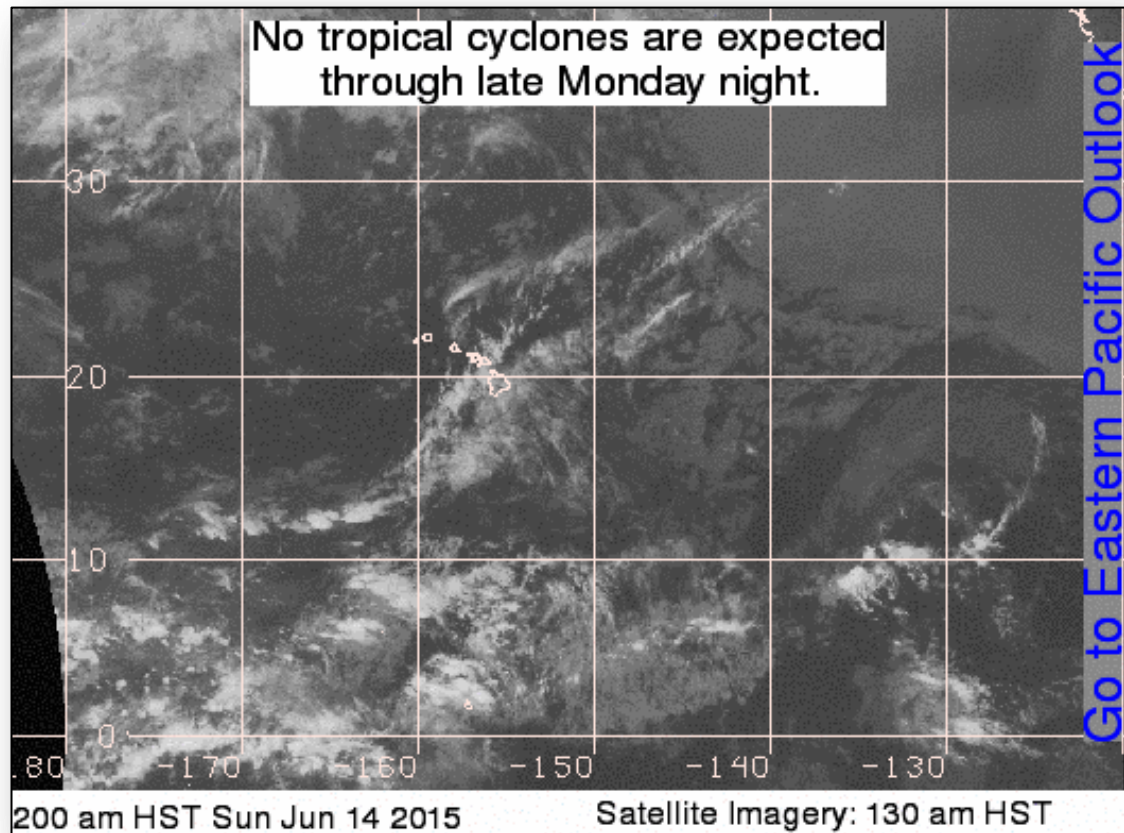




# Tropical Outlook – Central Pacific

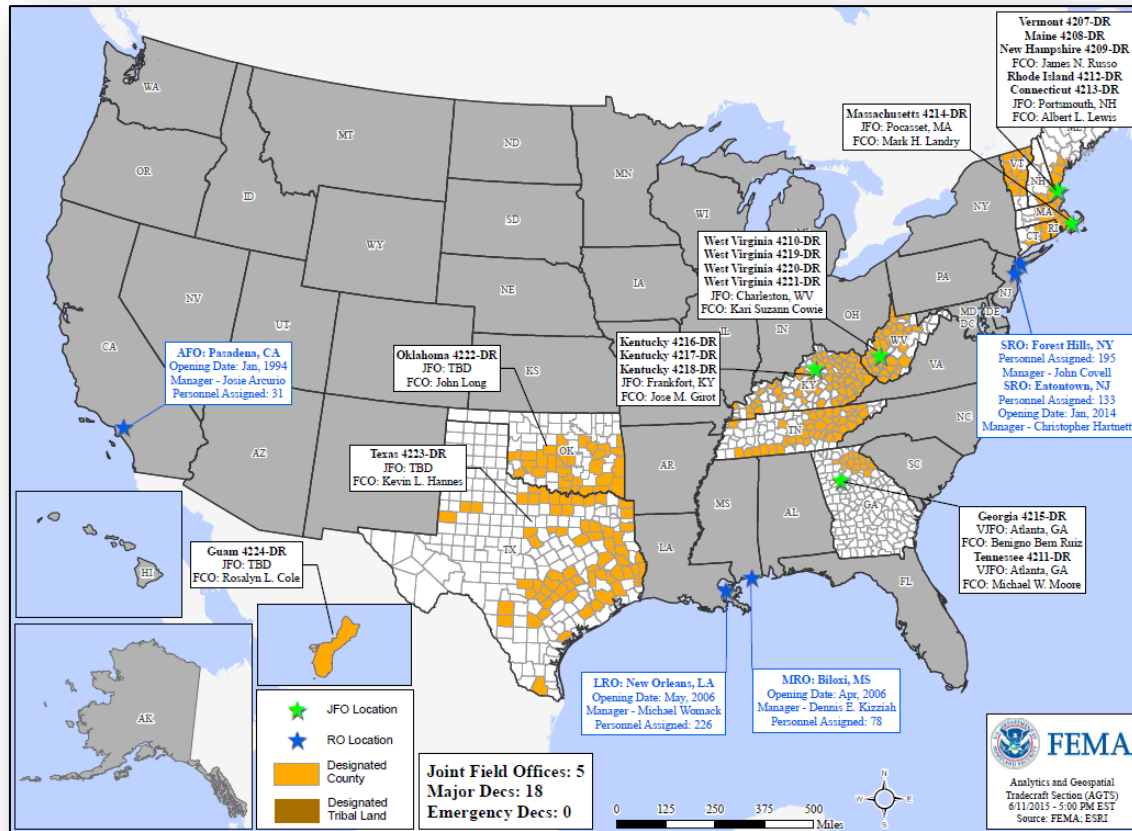


FEMA





# Open Field Offices as of June 14

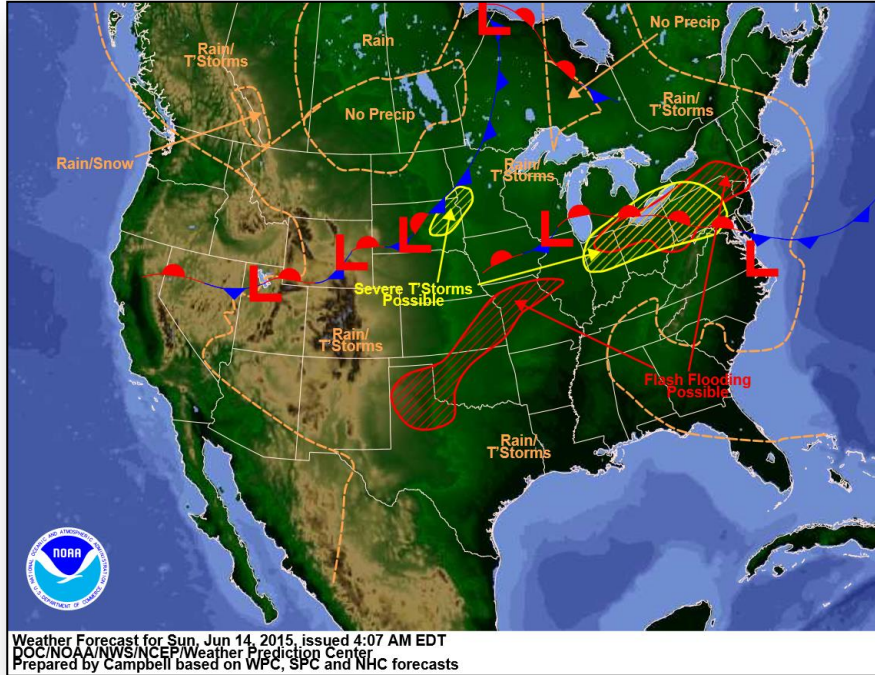


# Joint Preliminary Damage Assessments

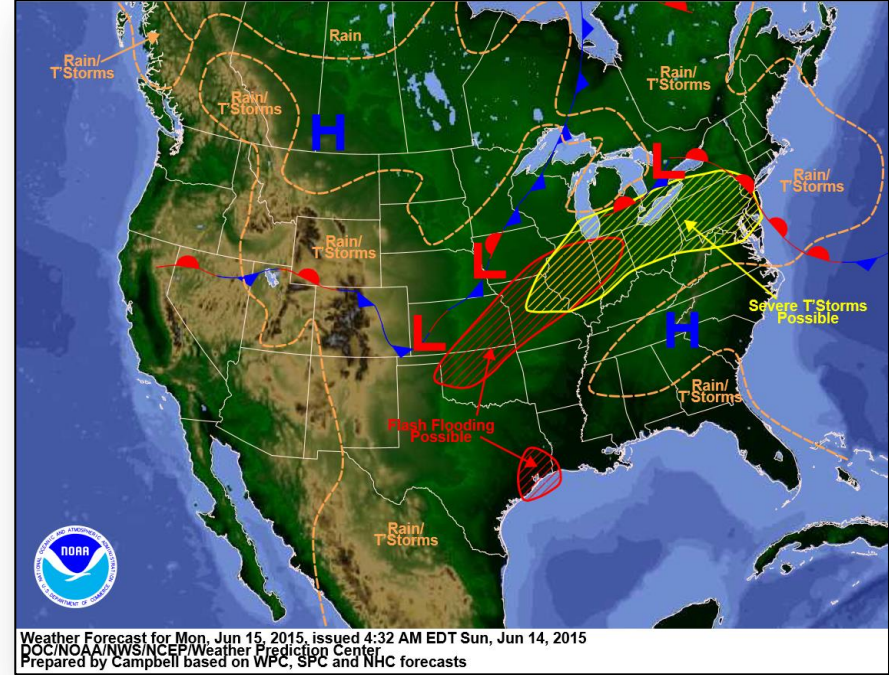


Region	State / Location	Event	IA/PA	Number of Counties		Start – End
				Requested	Complete	
VI	AR	Severe Storms and Flooding	IA	13	13	6/4 – 6/12
			PA	31	29	5/28 – TBD
VI	OK	Severe Storms and Flooding May 1 and continuing	IA	36	27	5/29 – TBD
			PA	61	43	5/18 – TBD
VI	TX	Severe Storms, Tornadoes and Flooding May 5 and continuing	IA	37	25	5/22 – TBD
			PA	73	58	5/22 – TBD
VII	KS	Severe Weather, Flooding and High Winds May 4 and continuing	PA	47	0	6/15 – TBD
VIII	WY	Severe Storms and Flooding June 4 and continuing	IA	2	2	6/9 – 6/11

# National Weather Forecast

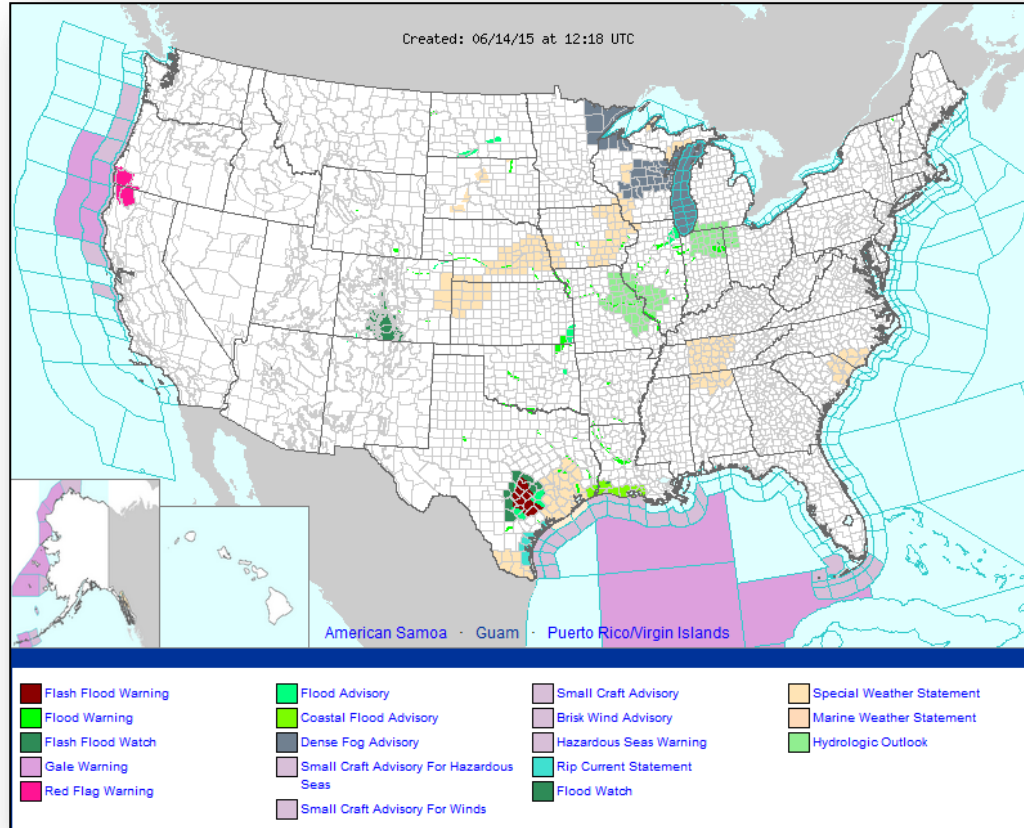


*Today*

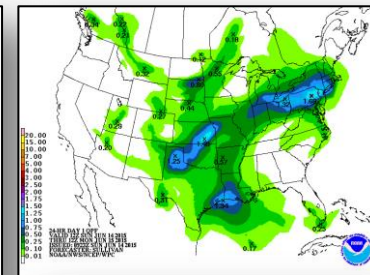
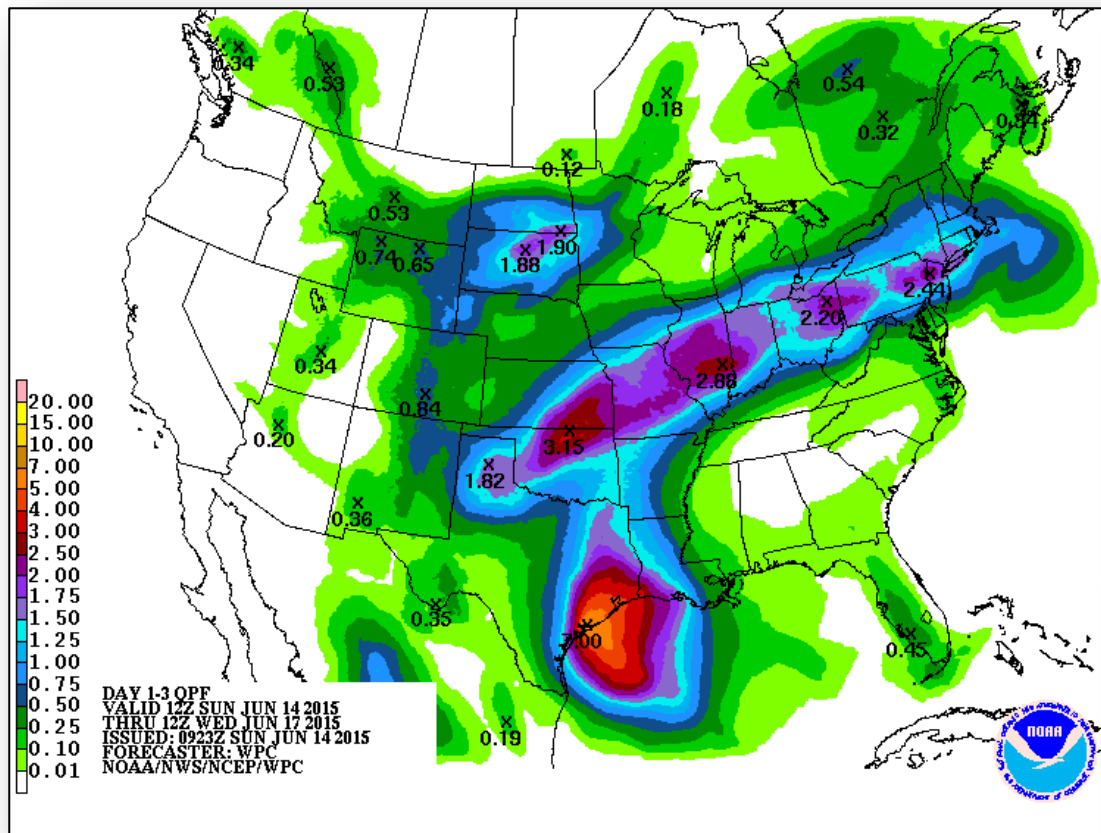


*Tomorrow*

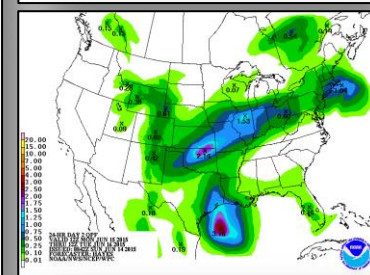
# Active Watches/Warnings



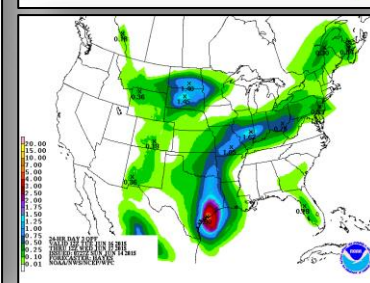
# Precipitation Forecast, 1-3 Day



Day 1



Day 2



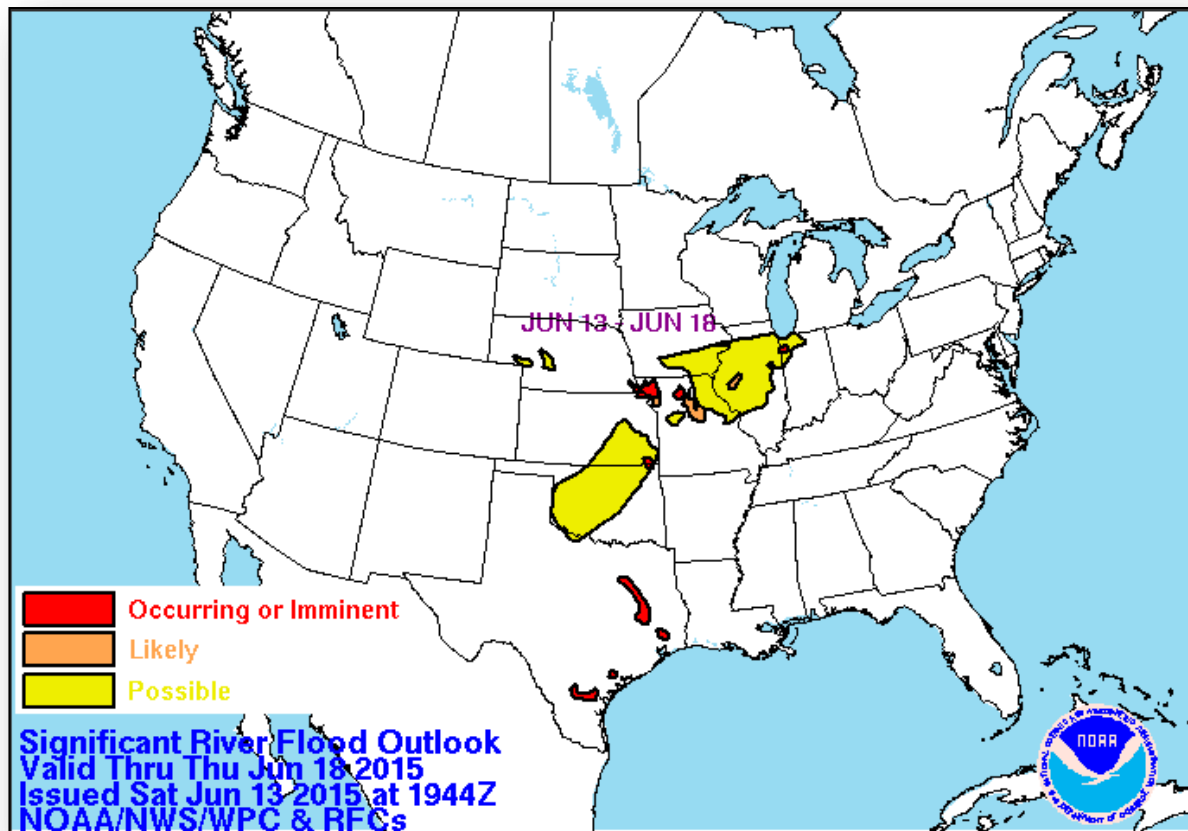
Day 3



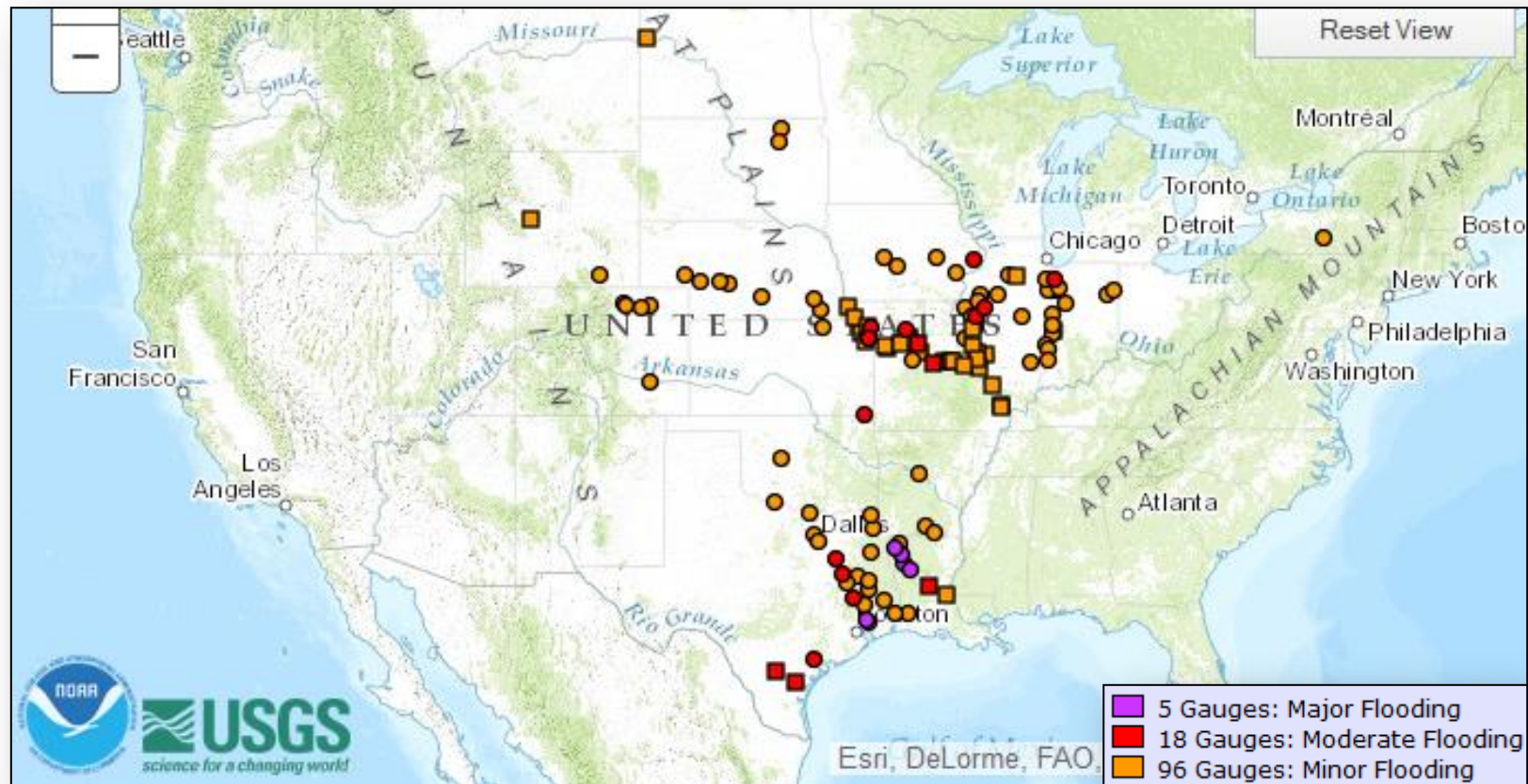
# Significant River Flood Outlook



FEMA

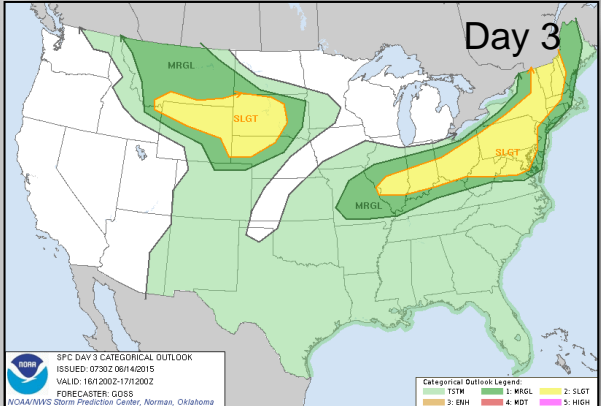
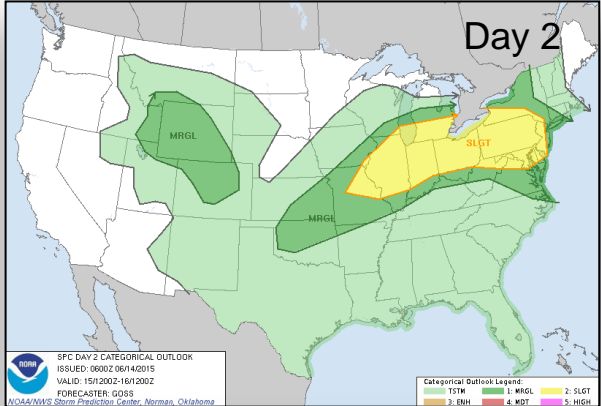
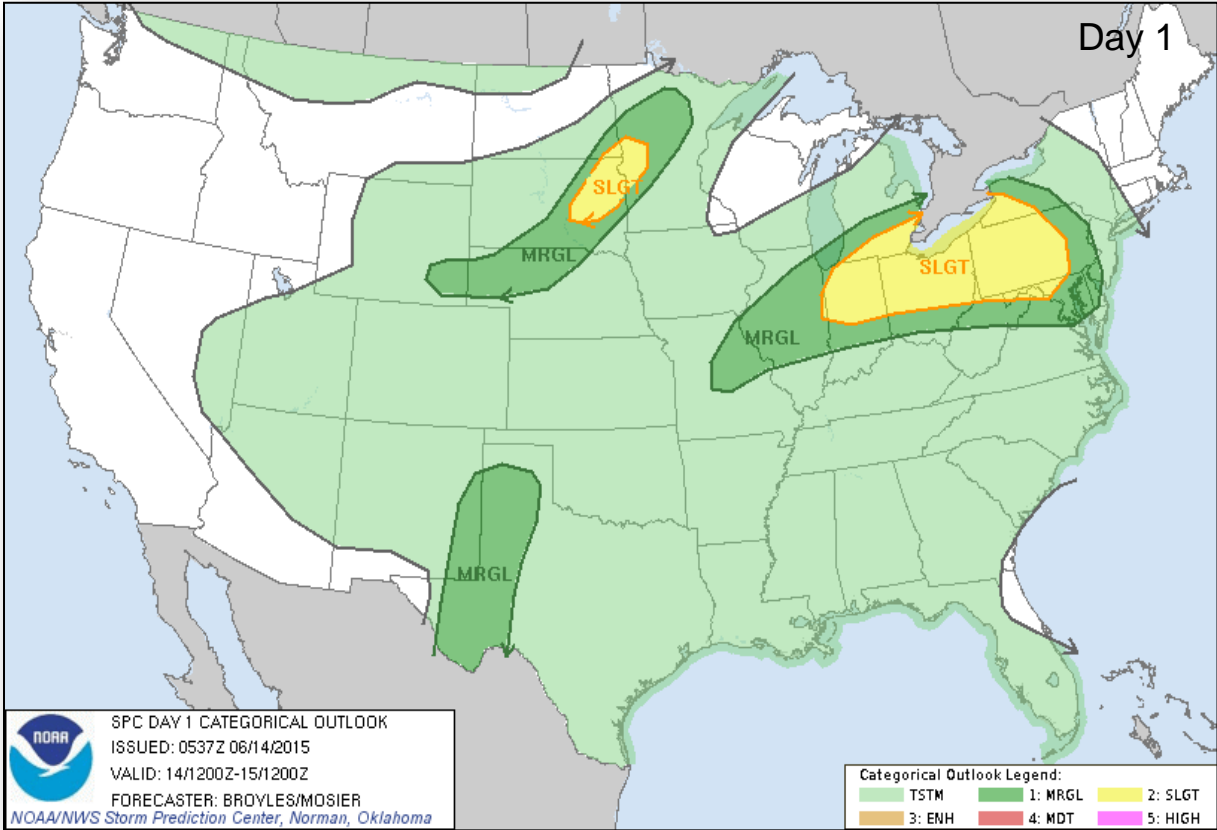


# River Forecast





# Severe Weather Outlook, Days 1-3



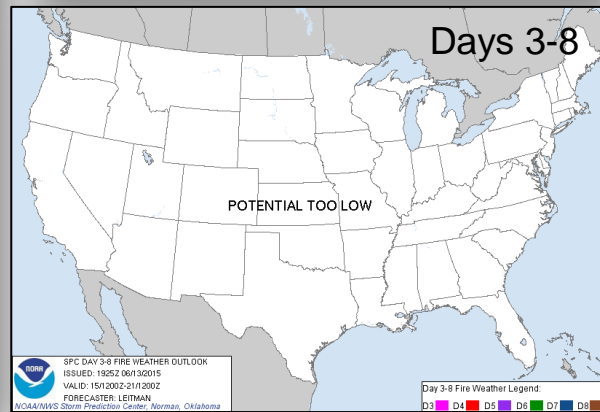
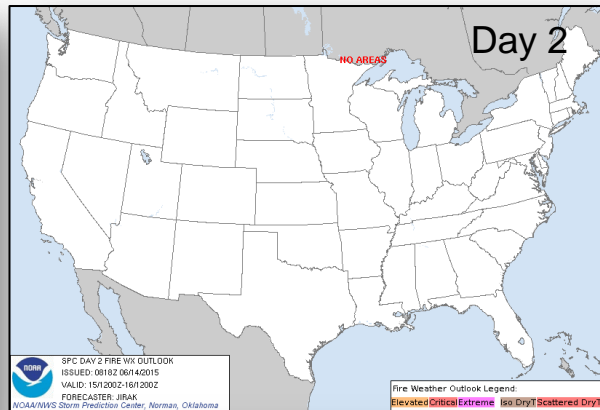
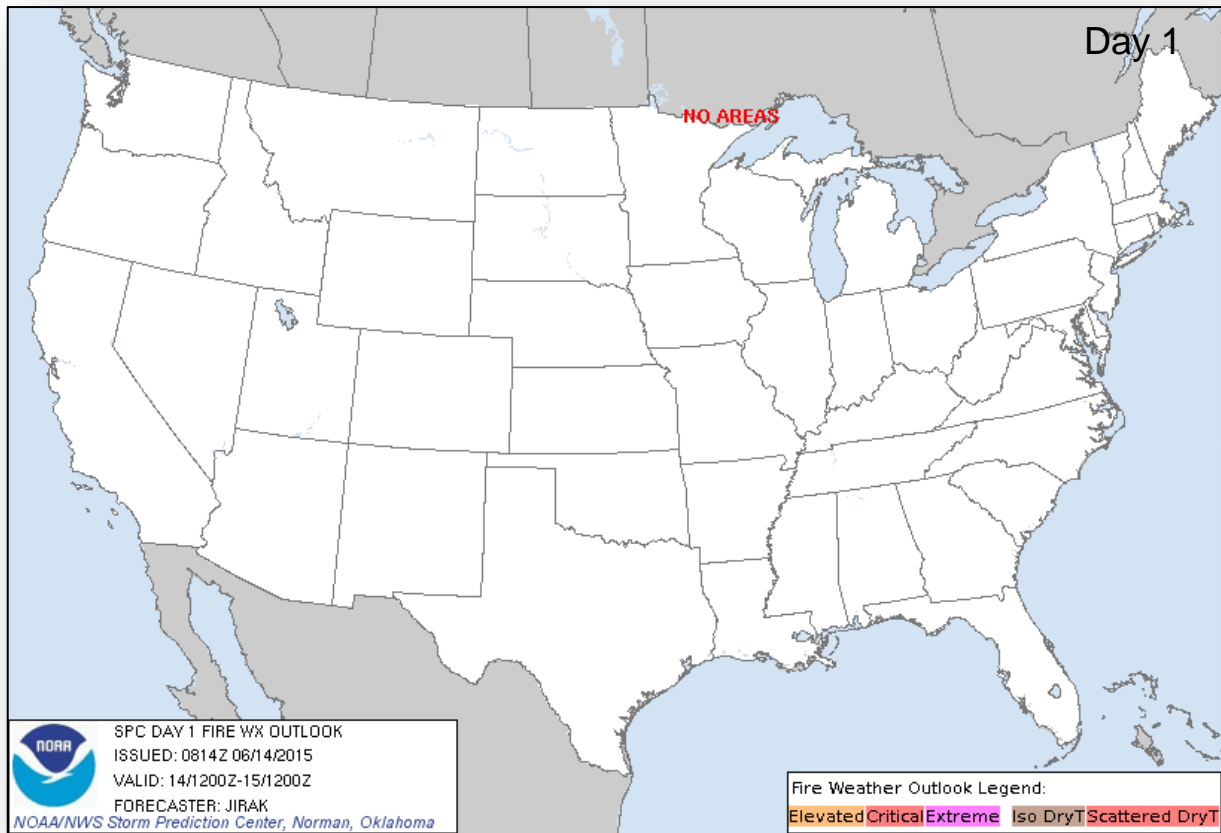
## Categories

- Thunderstorms
- Marginal Risk
- Slight Risk
- Enhanced Risk
- Moderate Risk
- High Risk

# Fire Weather Outlook, Days 1-8

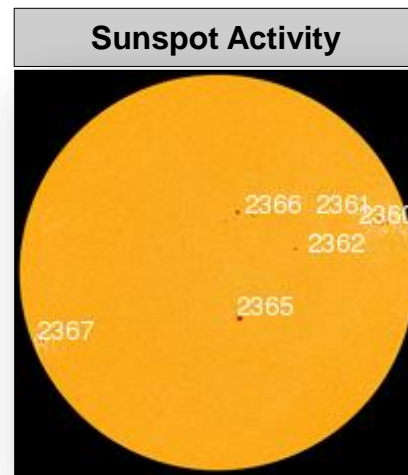
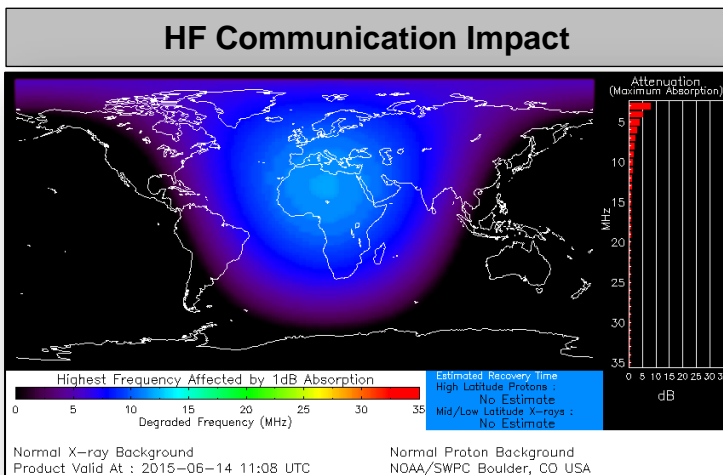


FEMA



# Space Weather

None	Past 24 Hours	Current	Next 24 Hours
Space Weather Activity:	Minor	None	None
• Geomagnetic Storms	None	None	None
• Solar Radiation Storms	None	None	None
• Radio Blackouts	R1	None	None



# FEMA Readiness – Deployable Teams /Assets



Deployable Teams/Assets									
Resource	Status	Total	FMC Available		Partially Available	Not Available	Detailed, Deployed, Activated	Comments	Rating Criterion
FCO		35	13	37%	0	1	21		OFDC Readiness: FCO    Green    Yellow    Red Type 1    3+            2            1 Type 2    4+            3            2 Type 3    4                3            2
FDRC		9	7	78%	0	0	2		FDRC    3                2            1
US&R		28	26	92%	0	1	1	NM-TF1 (Red) – Personnel shortages WA-TF1 (Yellow) – U.S. Open (June 1-30)	<ul style="list-style-type: none"><li>• Green = Available/FMC</li><li>• Yellow = Available/PMC</li><li>• Red    = Out-of-Service</li><li>• Blue    = Assigned/Deployed</li></ul>
National IMAT		3	2	67%	0	0	1	Elements of IMAT East-2 deployed to TX	<ul style="list-style-type: none"><li>• Green: 3 avail</li><li>• Yellow: 1-2 avail</li><li>• Red: 0 avail (<i>Individual N-IMAT red if 50% of Section Chiefs and/or Team Leader is unavailable for deployment.</i>)</li></ul>
Regional IMAT		13	7	54%	1	3	2	<b>Deployed (Blue):</b> RII (Team A) to TX supporting FEMA-4223-DR-TX RVI (Team 1) to TX <b>Available/ Partially Mission Capable (Yellow):</b> RX – Personnel Shortages <b>Not Mission Capable (Red):</b> RIX (Team 1) – Personnel Shortages RIV (Team 3) RVI (Team 2)	<ul style="list-style-type: none"><li>• Green: 7 or more avail</li><li>• Yellow: 4 - 6 teams available</li><li>• Red: &gt; 8 teams deployed/unavailable</li></ul> <i>R-IMAT also red if TL Ops/Log Chief is unavailable &amp; has no qualified replacement</i>
MCOV		60	34	57%	0	5	21	17 units in TX 4 units in OK	<ul style="list-style-type: none"><li>• Green = 80 – 100% avail</li><li>• Yellow = 60 – 79% avail</li><li>• Red = 59% or below avail</li><li>• Readiness remains 95%</li></ul>

# FEMA Readiness – National/Regional Teams



National/Regional Teams									
Resource	Status	Total	FMC Available		Partially Available	Not Available	Status	Comments	Rating Criterion
NWC		5	5	100%	0	0	Not Activated		• Green = FMC • Yellow = PMC • Red = NMC
NRCC		2	344	89%	0	44	Not Activated		
HLT		1	N/A	N/A	0	0	Activated		
DEST							Not Activated		
RRCCs		10	10	100%	0	0	Not Activated		
RWCs/MOCs		10	10	100%	0	0	Not Activated		



# FEMA

**FEMA's mission is to support our citizens and first responders to ensure that as a nation we work together to build, sustain, and improve our capability to prepare for, protect against, respond to, recover from, and mitigate all hazards.**