

The Disaster Center is dedicated to the idea that disaster mitigation is cost effective and individuals pursuing their own interest are the greatest potential force for disaster reduction.

Please consider making a small donation to the Disaster Center



When disaster mitigation is cost effective, we are on the road to bringing disasters to an end.



FEMA

Daily Operations Briefing

Monday, June 15, 2015

8:30 a.m. EDT

Significant Activity: June 14-15



Significant Events: None

Tropical Activity:

- Atlantic – Disturbance 1/High (80%)
- Eastern Pacific – Hurricane Carlos
- Central Pacific – No tropical cyclones expected through late Tuesday night
- Western Pacific – No activity

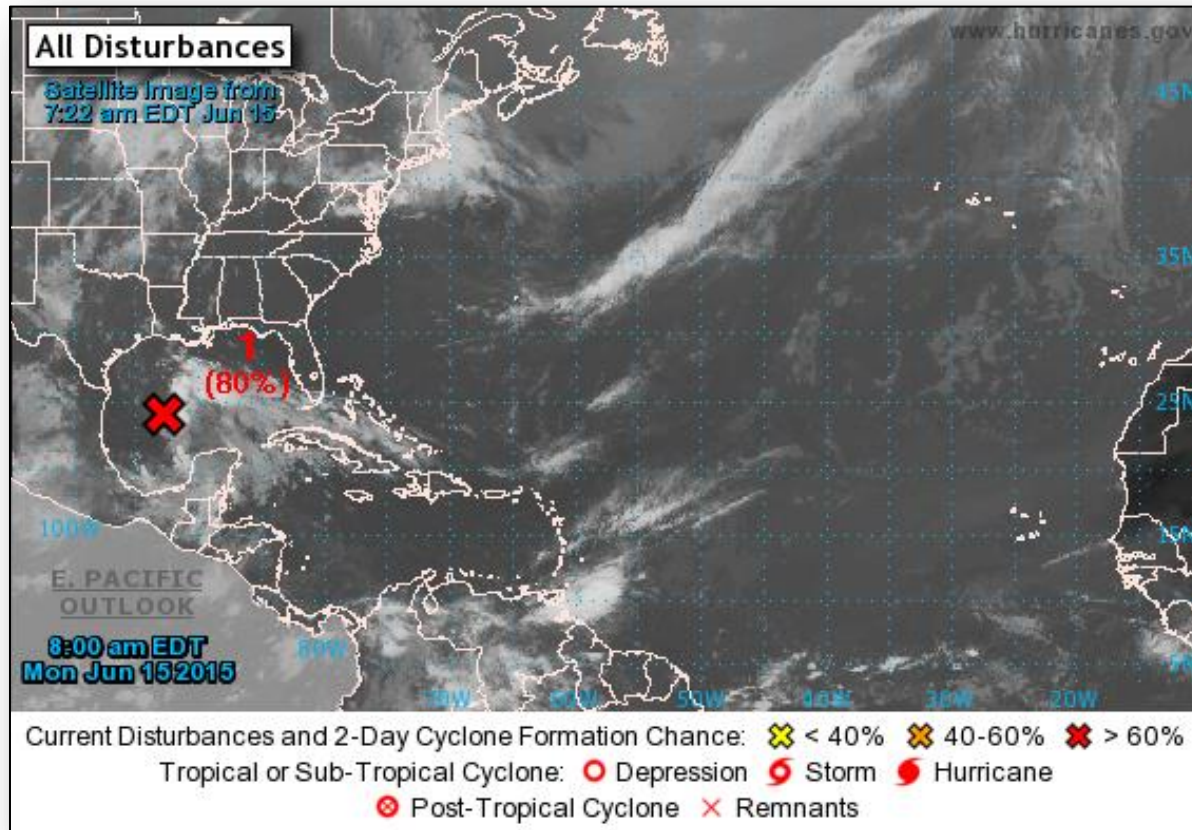
Significant Weather:

- Severe thunderstorms – Middle Mississippi and Ohio valleys, Great Lakes into Mid-Atlantic
- Flash flooding – Southern Plains into Ohio Valley
- Rain and thunderstorms – Southern Plains into the Northern Rockies
- Red Flag Warnings – AK
- Elevated/Critical Fire Weather areas – none
- Space weather – past 24 hours has been minor - geomagnetic storms reaching the G1 level occurred; no space weather storms are predicted for the next 24 hours

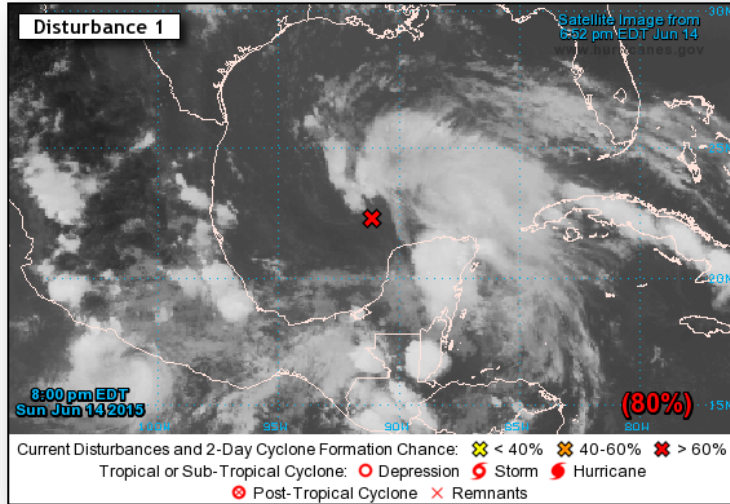
Declaration Activity: None

FEMA Readiness: No significant activity

2-Day Tropical Outlook – Atlantic



Atlantic – Disturbance 1



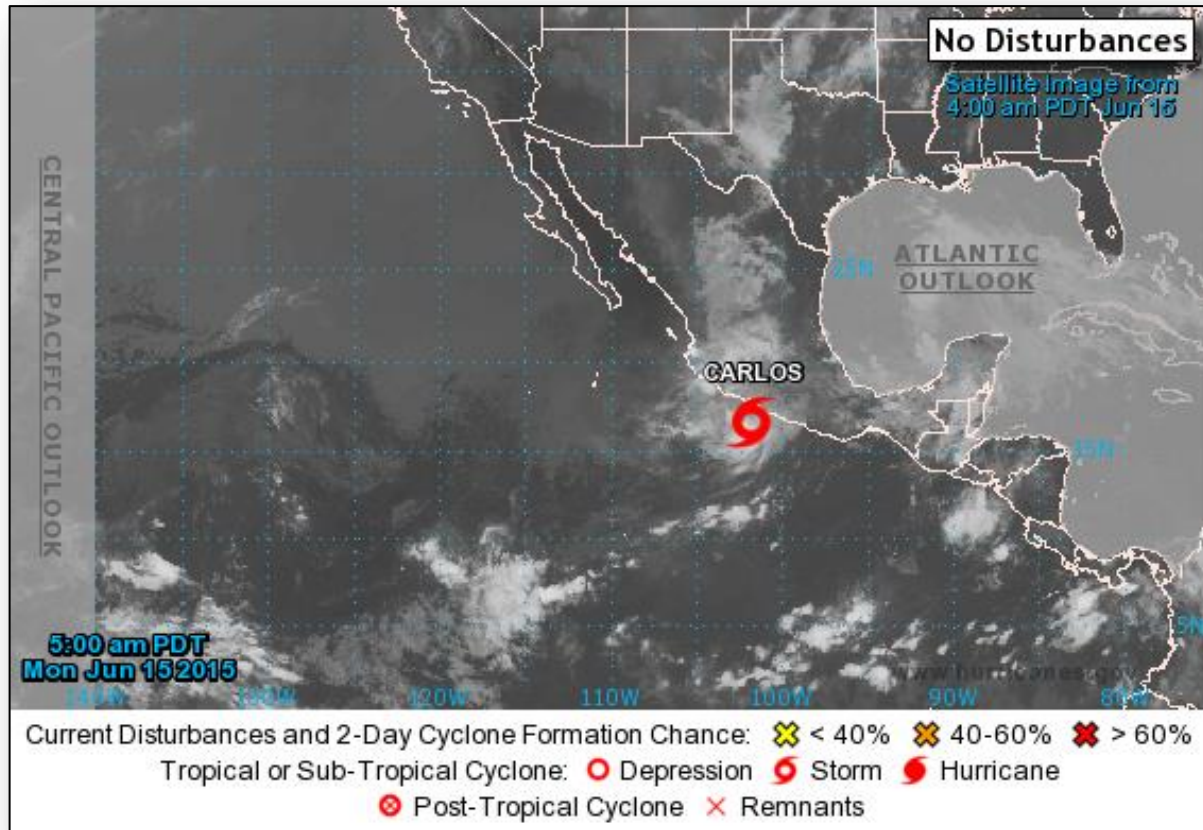
Disturbance 1 (as of 8:00 a.m. EDT)

- Thunderstorm activity with the broad area of low pressure in the south-central Gulf of Mexico has become little more concentrated
- Low continues to produce tropical storm-force winds well to the E and NE of the center
- Upper-level winds are forecast to become more favorable for development while this system moves NW across the W Gulf of Mexico
- Tropical depression or tropical storm could form at any time before the system reaches the Texas coast sometime tomorrow
- Strong winds and heavy rain possible along TX/LA coast
- Formation chance:
 - Through 48 hours: High (Near 80%)
 - Through 5 days: High (Near 80%)

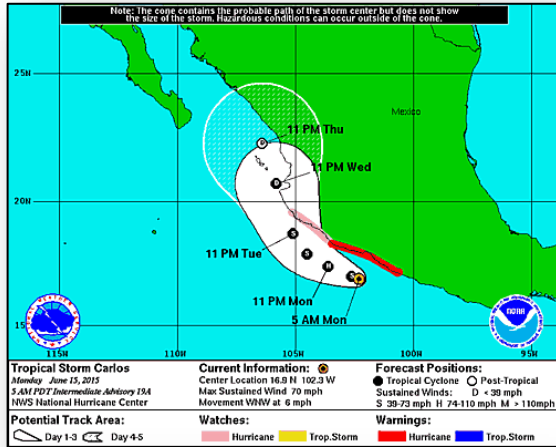
2-Day Tropical Outlook – Eastern Pacific



FEMA

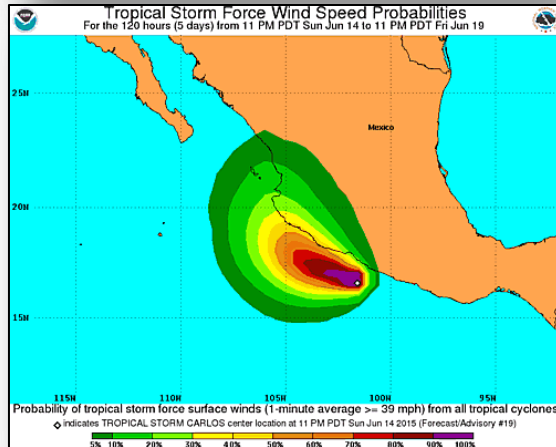


Tropical Storm Carlos



Tropical Storm Carlos: (Advisory #19A as of 8:00 a.m. EDT)

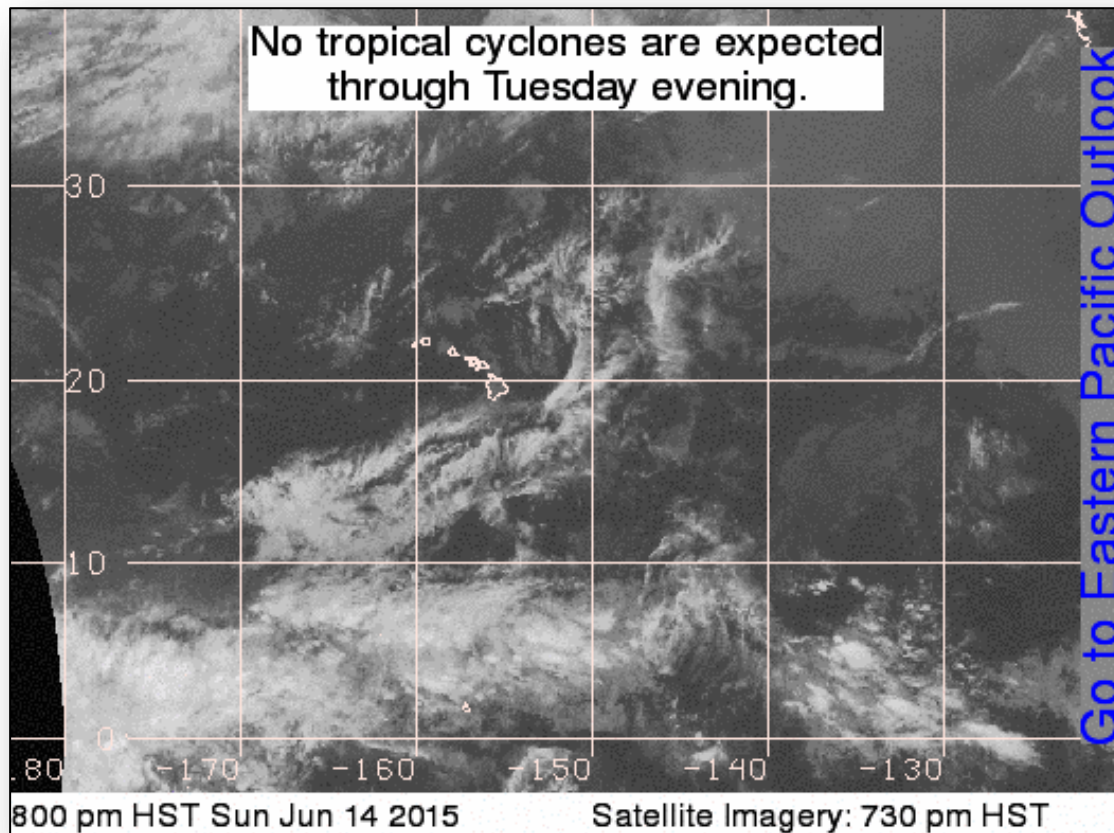
- Located 165 miles W of Acapulco, MX
- Moving NW at 6 mph
- Maximum sustained winds 70 mph
- General motion is expected to continue through Tuesday
- Tropical storm-force winds extend 45 miles
- No Watches or Warnings are in effect for U.S.



Tropical Outlook – Central Pacific



FEMA

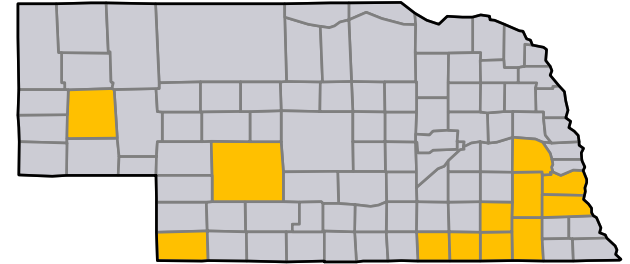


Major Disaster Declaration Request – NE



June 12, 2015

- Governor of Nebraska requested a Major Disaster Declaration
- Due to severe storms, tornadoes, straight-line winds, and flooding on May 2, 2015 and continuing
- Requesting:
 - Public Assistance for 12 counties
 - Hazard Mitigation statewide



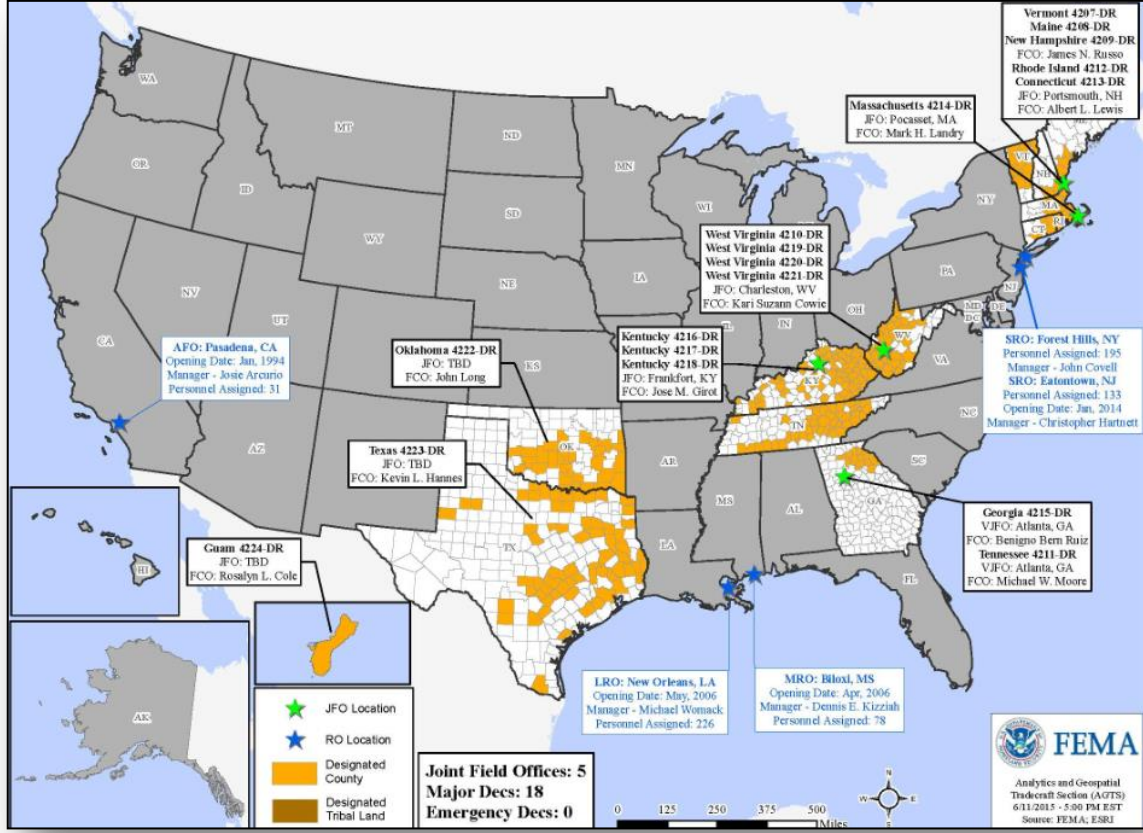
■ Requested PA counties

Disaster Requests & Declarations



Declaration Requests in Process		Requests APPROVED (since last report)	Requests DENIED (since last report)
1	Date Requested	0	1
MD – DR Civil Unrest	May 22, 2015		Denied June 12, 2015
NE – Severe Storms, Tornadoes, Straight-line Winds, and Flooding	June 12, 2015		

Open Field Offices as of June 15

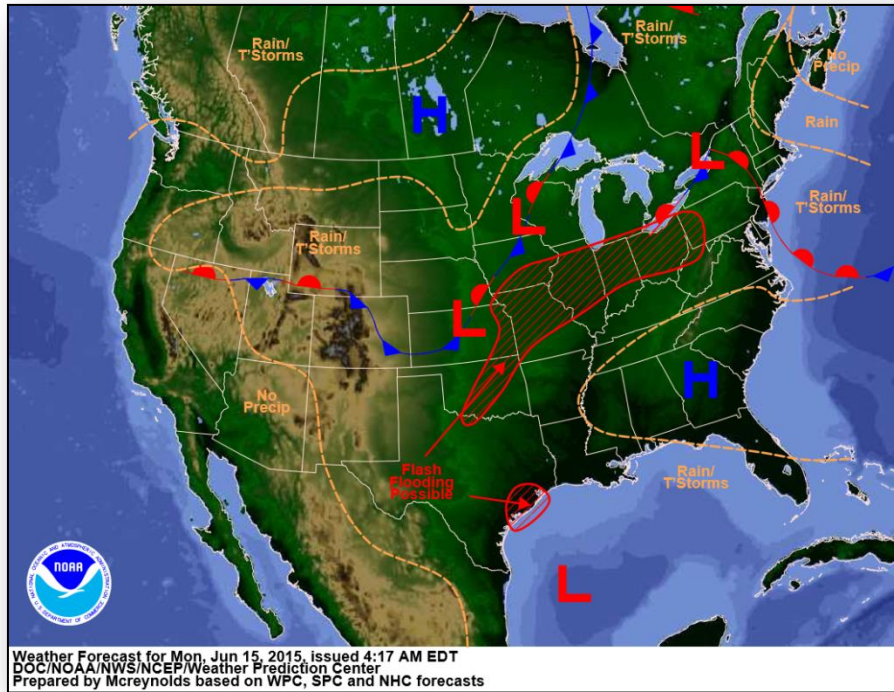


Joint Preliminary Damage Assessments

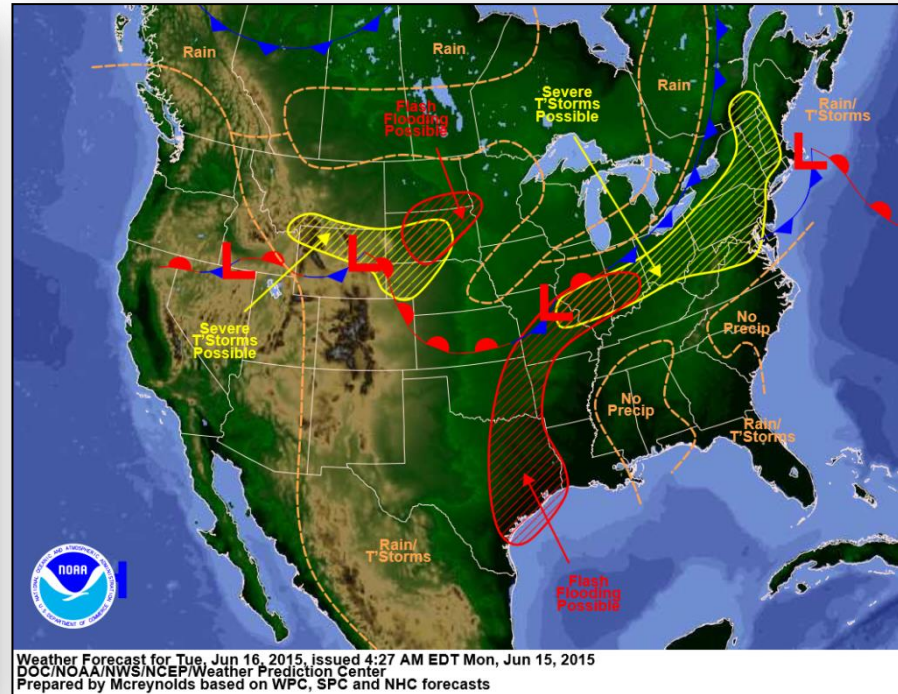


Region	State / Location	Event	IA/PA	Number of Counties		Start – End
				Requested	Complete	
VI	AR	Severe Storms and Flooding	IA	13	13	6/4 – 6/12
			PA	31	29	5/28 – TBD
VI	OK	Severe Storms and Flooding May 1 and continuing	IA	36	27	5/29 – TBD
			PA	61	43	5/18 – TBD
VI	TX	Severe Storms, Tornadoes and Flooding May 5 and continuing	IA	37	25	5/22 – TBD
			PA	73	58	5/22 – TBD
VII	KS	Severe Weather, Flooding and High Winds May 4 and continuing	PA	47	0	6/15 – TBD
VIII	WY	Severe Storms and Flooding June 4 and continuing	IA	2	2	6/9 – 6/11

National Weather Forecast



Today

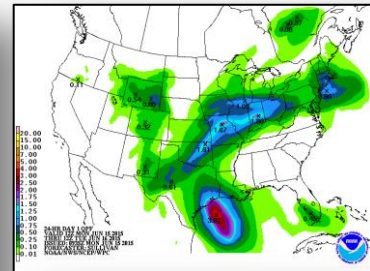
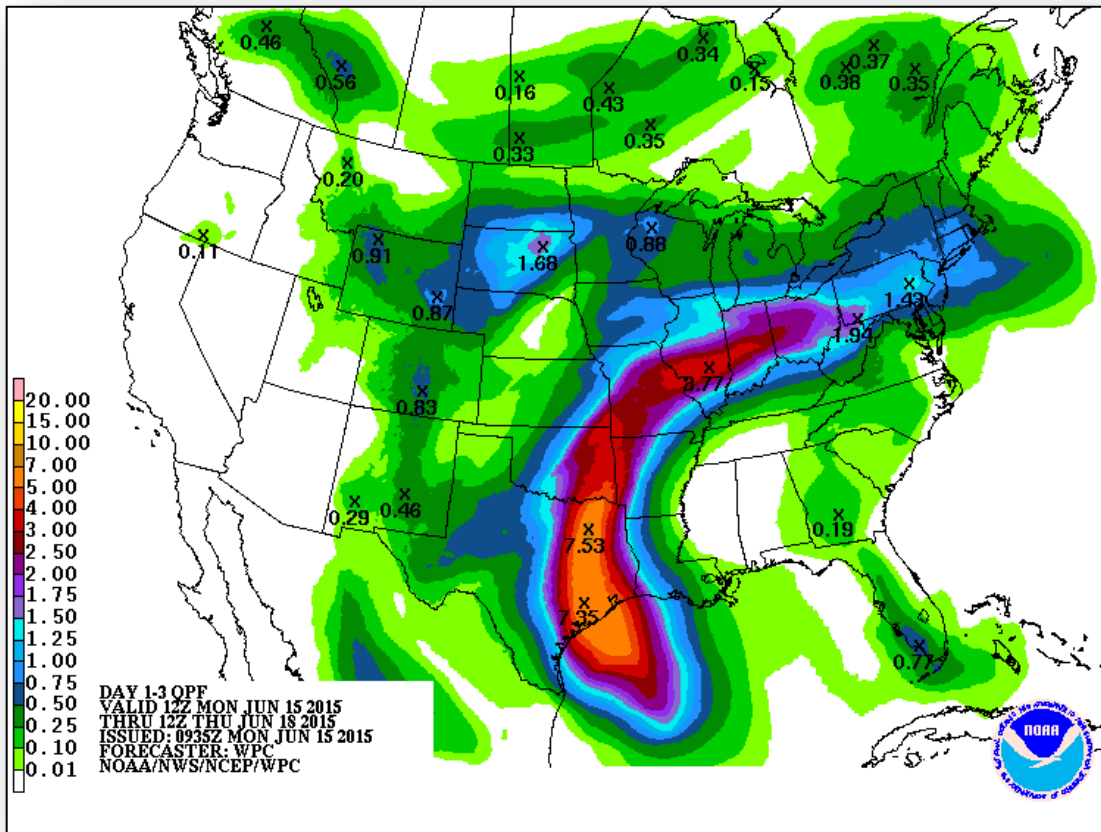


Tomorrow

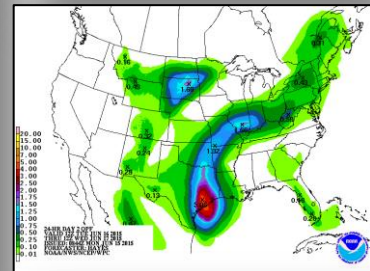
Precipitation Forecast, 1-3 Day



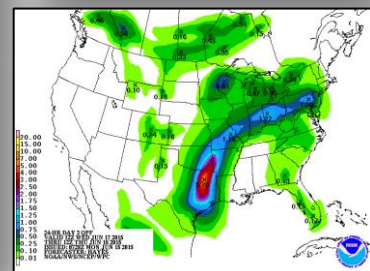
FEMA



Day 1



Day 2

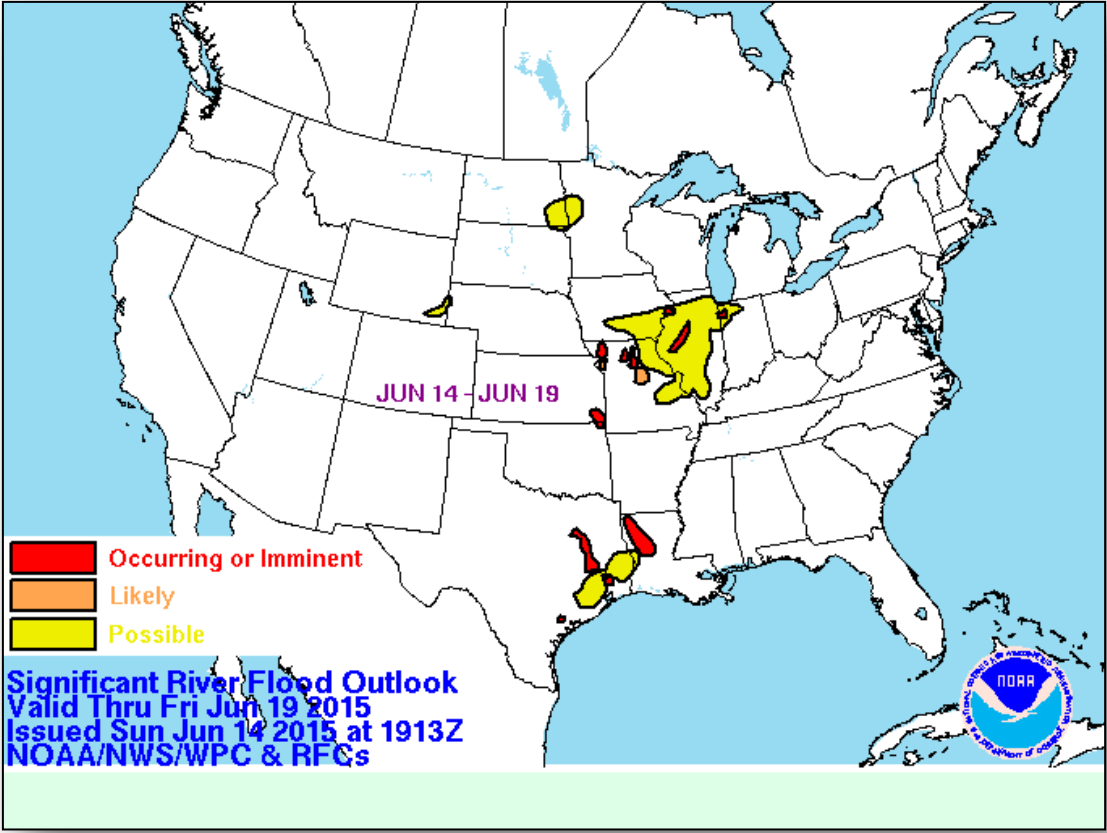


Day 3

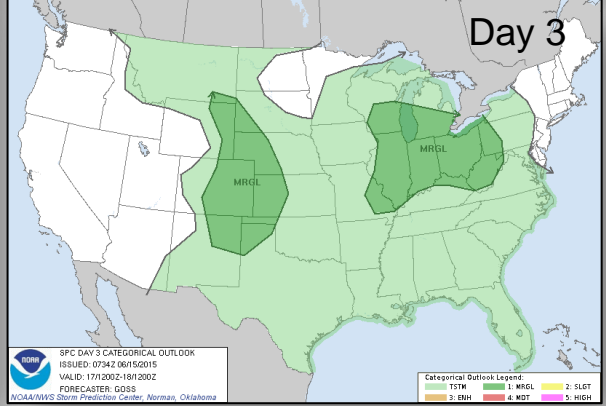
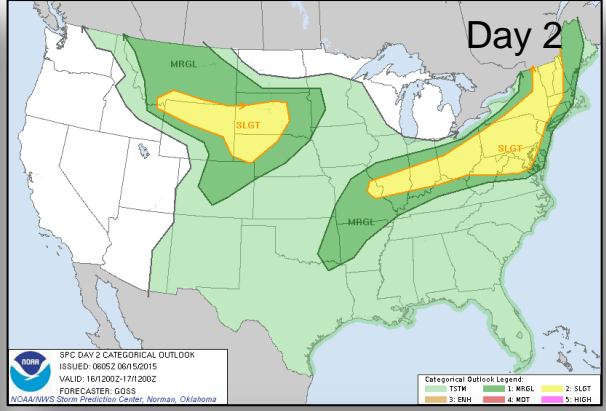
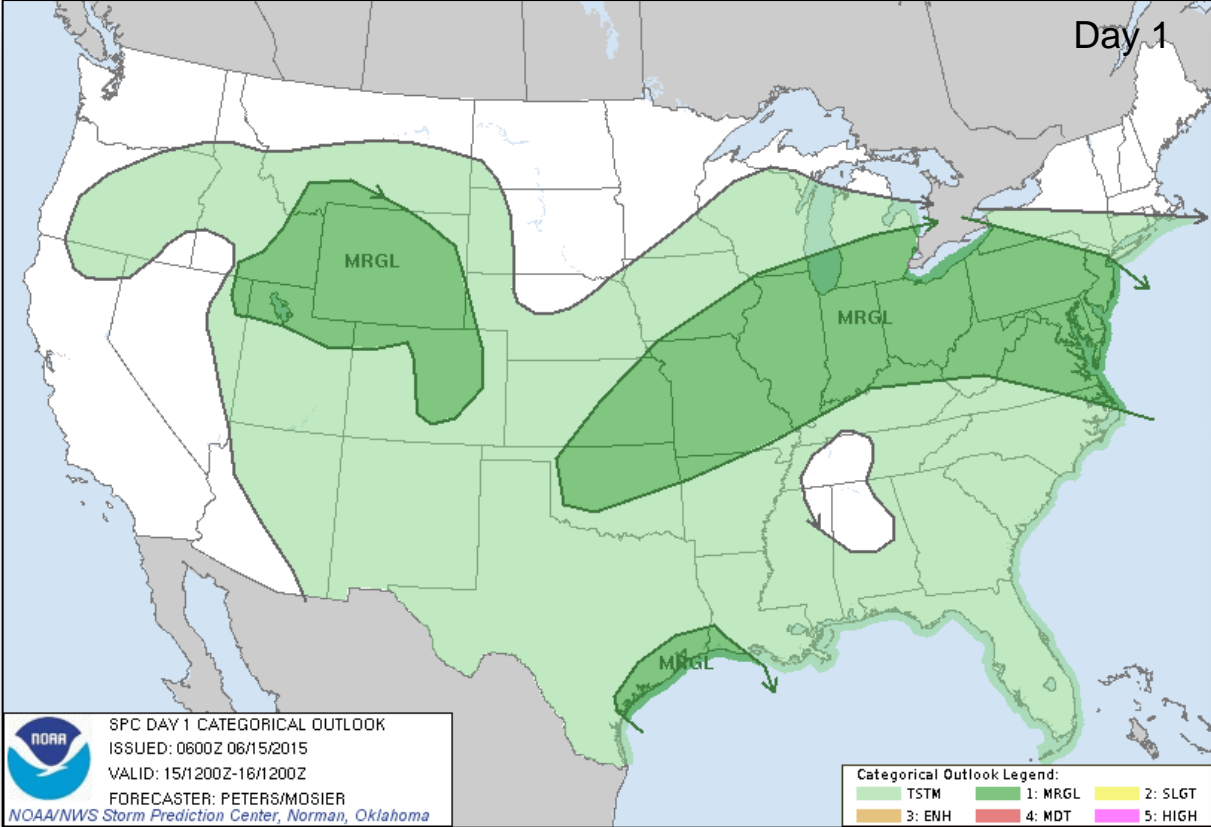
Significant River Flood Outlook



FEMA



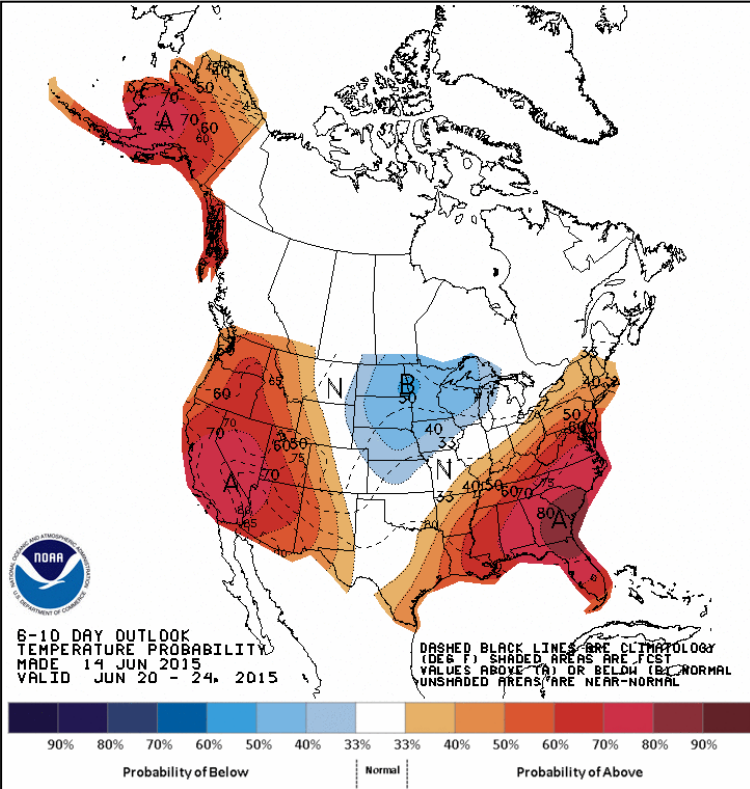
Severe Weather Outlook, Days 1-3



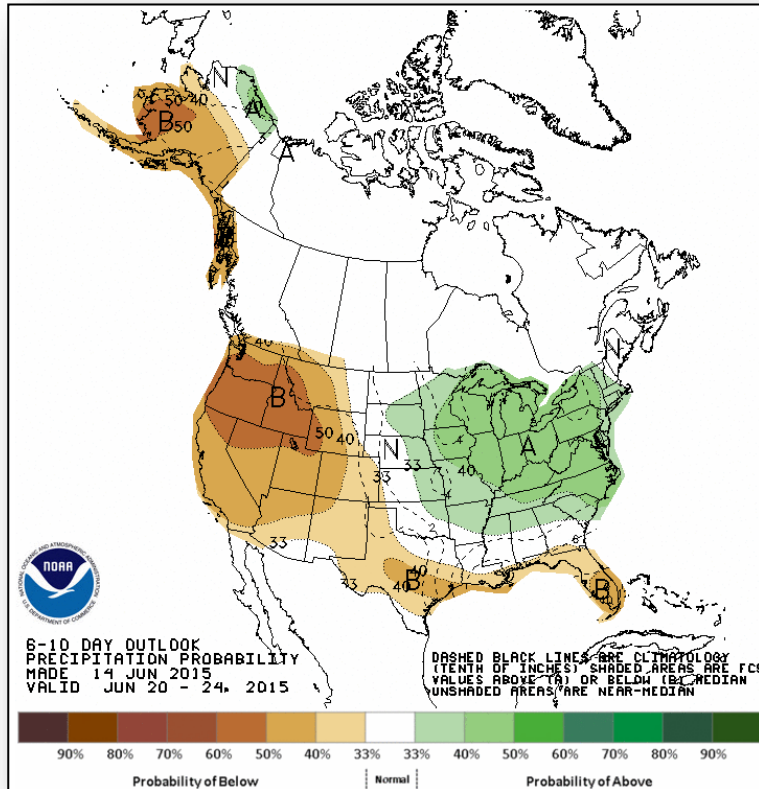
Categories

- Thunderstorms
- Marginal Risk
- Slight Risk
- Enhanced Risk
- Moderate Risk
- High Risk

6-10 Day Outlooks



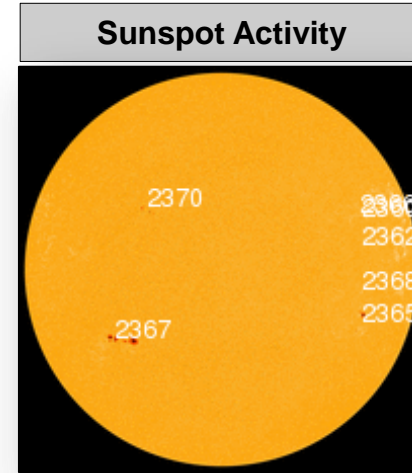
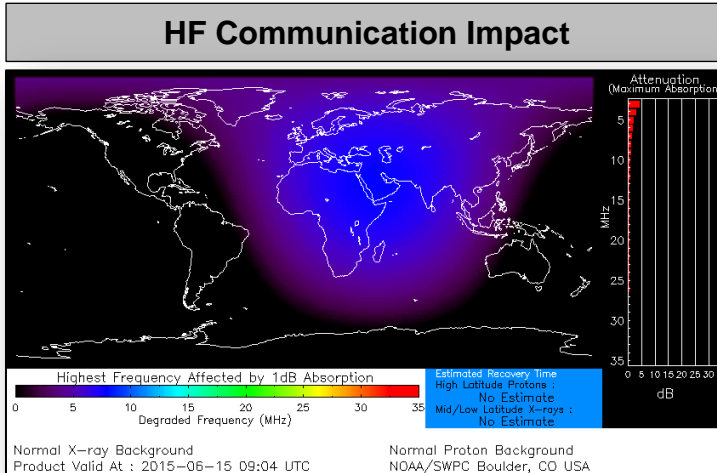
Temperature Probability



Precipitation Probability

Space Weather

None	Past 24 Hours	Current	Next 24 Hours
Space Weather Activity:	Minor	None	None
• Geomagnetic Storms	G1	None	None
• Solar Radiation Storms	None	None	None
• Radio Blackouts	R1	None	None



FEMA Readiness – Deployable Teams /Assets



Deployable Teams/Assets									
Resource	Status	Total	FMC Available		Partially Available	Not Available	Detailed, Deployed, Activated	Comments	Rating Criterion
FCO		35	13	37%	0	1	21		OFDC Readiness: FCO Green Yellow Red Type 1 3+ 2 1 Type 2 4+ 3 2 Type 3 4 3 2 FDRC 3 2 1
FDRC		9	7	78%	0	0	2		
US&R		28	26	92%	0	1	1	NM-TF1 (Red) – Personnel shortages WA-TF1 (Yellow) – U.S. Open (June 1-30)	<ul style="list-style-type: none"> Green = Available/FMC Yellow = Available/PMC Red = Out-of-Service Blue = Assigned/Deployed
National IMAT		3	2	67%	0	0	1	Elements of IMAT East-2 deployed to TX	<ul style="list-style-type: none"> Green: 3 avail Yellow: 1-2 avail Red: 0 avail (<i>Individual N-IMAT red if 50% of Section Chiefs and/or Team Leader is unavailable for deployment.</i>)
Regional IMAT		13	7	54%	1	3	2	Deployed (Blue): RII (Team A) to TX supporting FEMA-4223-DR-TX RVI (Team 1) to TX Available/ Partially Mission Capable (Yellow): RX – Personnel Shortages Not Mission Capable (Red): RIX (Team 1) – Personnel Shortages RIV (Team 3) RVI (Team 2)	<ul style="list-style-type: none"> Green: 7 or more avail Yellow: 4 - 6 teams available Red: > 8 teams deployed/unavailable R-IMAT also red if TL Ops/Log Chief is unavailable & has no qualified replacement
MCOV		60	34	57%	0	5	21	17 units in TX 4 units in OK	<ul style="list-style-type: none"> Green = 80 – 100% avail Yellow = 60 – 79% avail Red = 59% or below avail Readiness remains 95%

FEMA Readiness – National/Regional Teams



National/Regional Teams									
Resource	Status	Total	FMC Available		Partially Available	Not Available	Status	Comments	Rating Criterion
NWC		5	5	100%	0	0	Not Activated		<ul style="list-style-type: none"> • Green = FMC • Yellow = PMC • Red = NMC
NRCC		2	344	89%	0	44	Not Activated		
HLT		1	N/A	N/A	0	0	Activated		
DEST							Not Activated		
RRCCs		10	10	100%	0	0	Not Activated		
RWCs/MOCs		10	10	100%	0	0	Activated	RVI at Enhanced Watch for Invest 91L	



FEMA

FEMA's mission is to support our citizens and first responders to ensure that as a nation we work together to build, sustain, and improve our capability to prepare for, protect against, respond to, recover from, and mitigate all hazards.