

The Disaster Center is dedicated to the idea that disaster mitigation is cost effective and individuals pursuing their own interest are the greatest potential force for disaster reduction.

Please consider making a small donation to the Disaster Center



When disaster mitigation is cost effective, we are on the road to bringing disasters to an end.



# **FEMA**

## **Daily Operations Briefing**

**Thursday, June 23, 2016**

**8:30 a.m. EDT**

# Significant Activity: June 22-23



## **Significant Events:**

- Severe weather brought torrential rains, tornadoes, high winds, and large hail moved across the Midwest

## **Tropical Activity:**

- Atlantic – Disturbance 1: Disorganized showers and thunderstorms over the northwestern Caribbean Sea
- Eastern Pacific – No new tropical cyclones expected during the next five days
- Central Pacific – No tropical cyclones expected through Friday night

## **Significant Weather:**

- Slight to Enhanced risk of severe thunderstorms with flash flooding possible – Central Plains; Middle Mississippi Valley to the Ohio Valley and Mid-Atlantic
- Excessive Heat – portions of AZ
- Red Flag Warnings – AK, CA, NV, MT, & WY
- Space Weather – Space weather storms for the past 24 hours has been minor. Geomagnetic storms reaching the G1 level occurred; No storms predicted for the next 24 hours

**Earthquake Activity:** No significant activity

## **Declaration Activity:**

Texas Amendment #1 (FEMA -4272-DR)

- Added 7 counties for Individual Assistance

# Severe Weather Outbreak – Region V (FINAL)



## Situation:

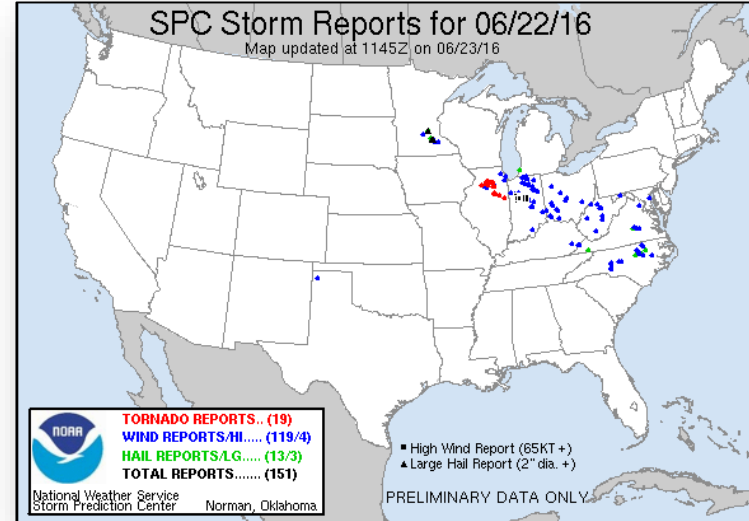
- Severe storms bringing torrential rains, tornadoes, high winds, and large hail moved across Region V, primarily in northern Illinois
- Preliminary reports include 19 tornadoes, 119 wind reports, and 13 hail reports
- This system continues moving east into FEMA Region III today

## Impacts:

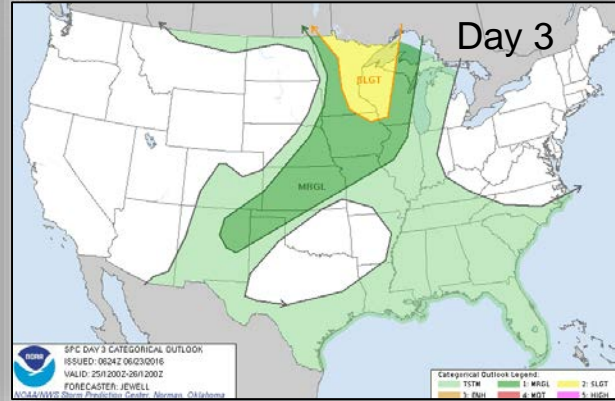
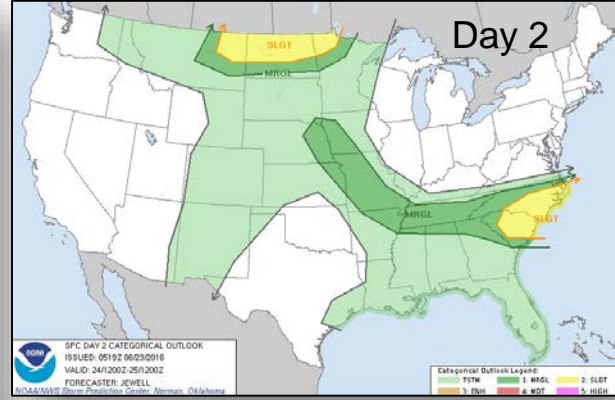
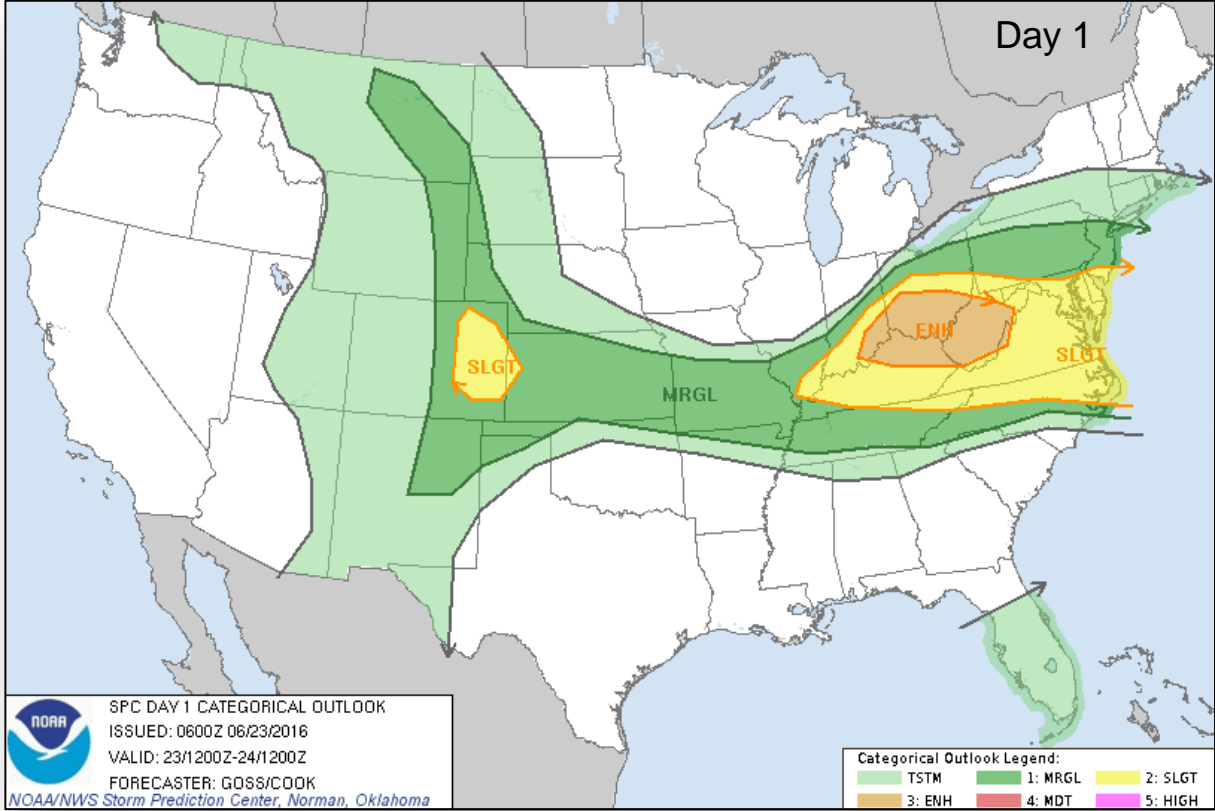
- Downed trees, power lines, and damage to some homes & businesses – No widespread significant damages reported
- No fatalities/injuries reported
- Over 350 flights cancelled at O'Hare & 70 cancelled at Midway Int'l Airports
- Power outages (*DOE Eagle-I as of 7:30 a.m. EDT*):
  - *Illinois – 6k; Indiana – 38k; Ohio – 63k*

## Response:

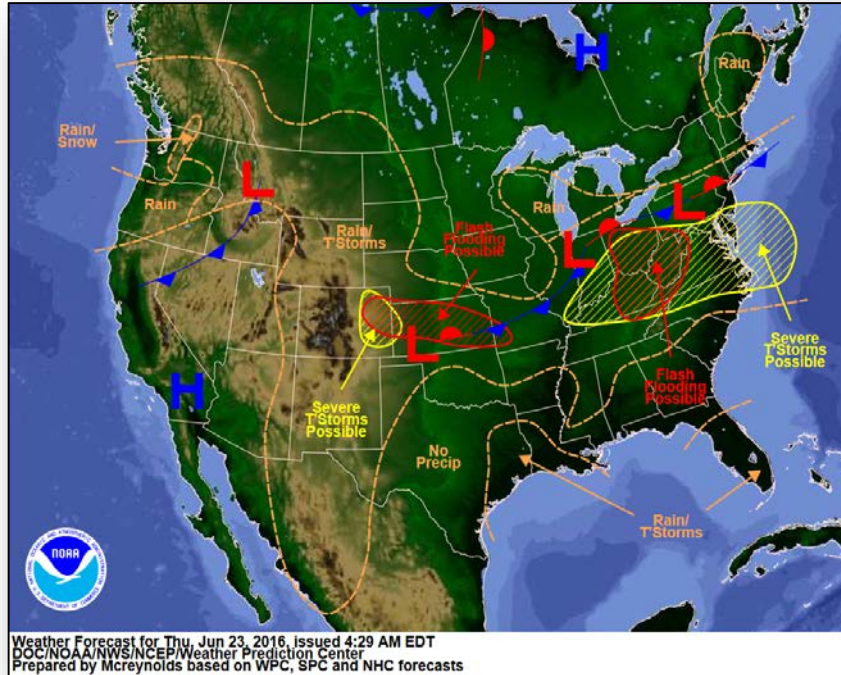
- IL, IN, OH SEOC at Partial Activation (Monitoring)
- FEMA Region V RRCC is not activated (Partially Activated overnight); RWC remains at Watch/Steady State
- FEMA NRCC is not activated and NWC at Watch/Steady State
- No requests for FEMA assistance



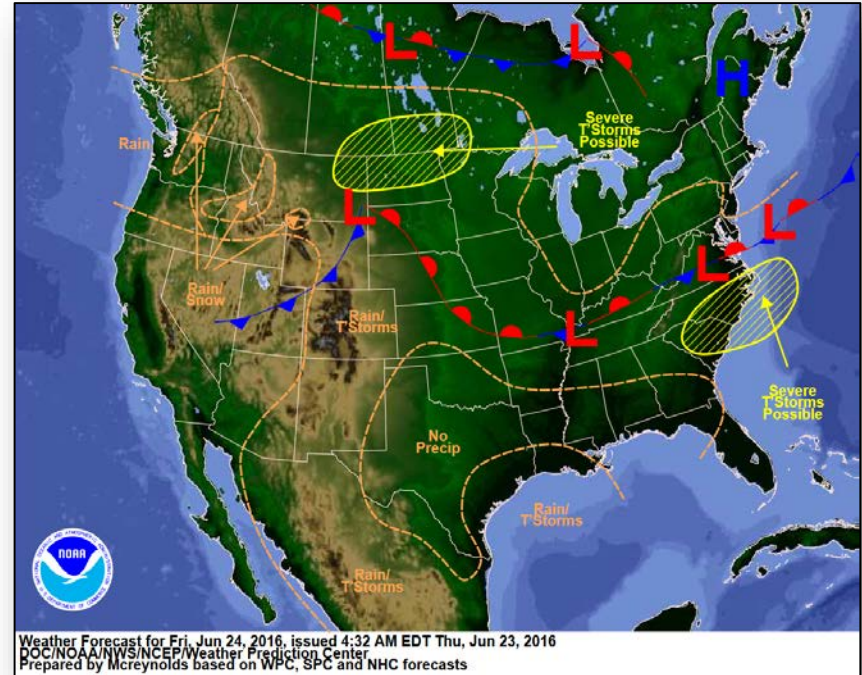
# Severe Weather Outlook: Day 1 - 3



# National Weather Forecast



*Today*

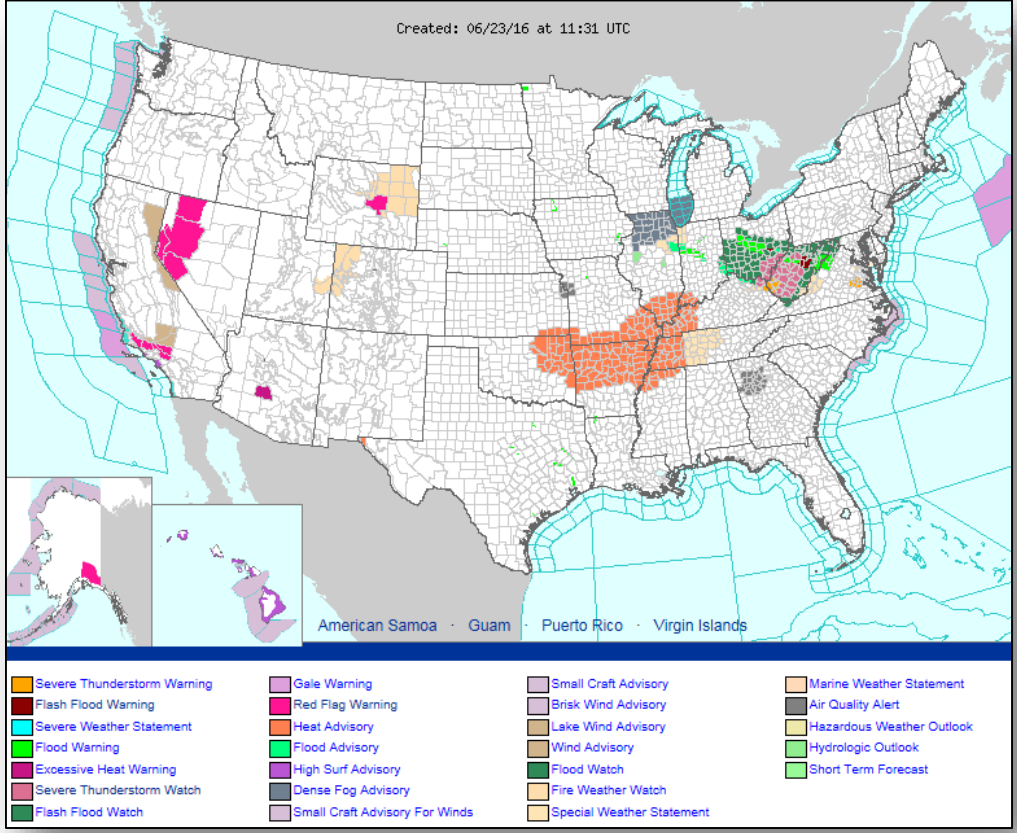


*Tomorrow*





# Active Watches/Warnings

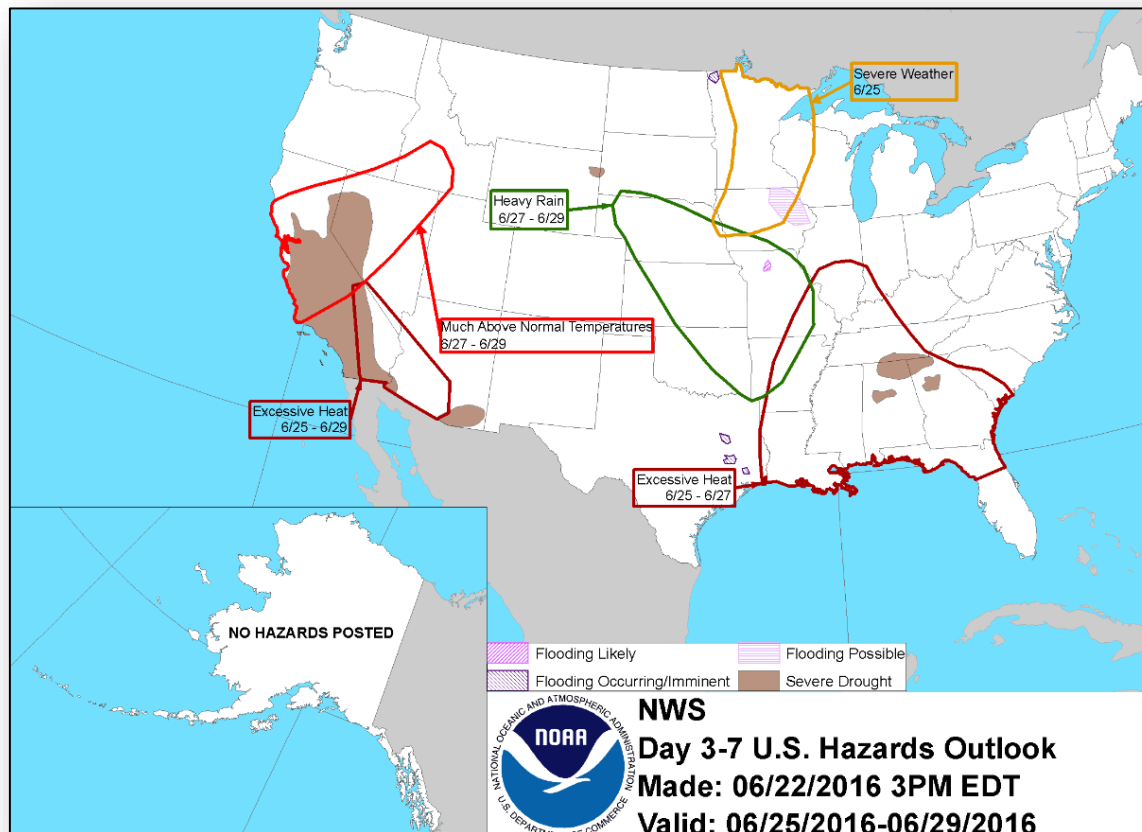




# Hazard Outlook, June 25-29

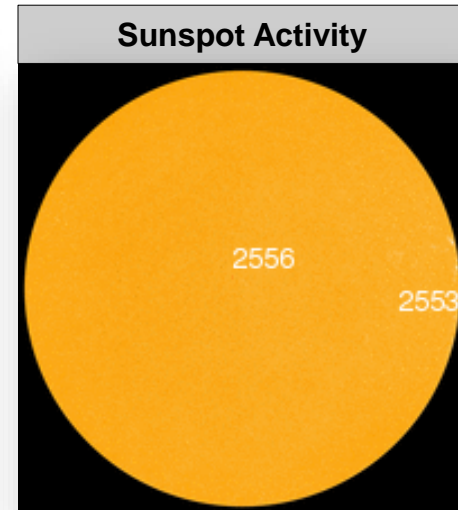
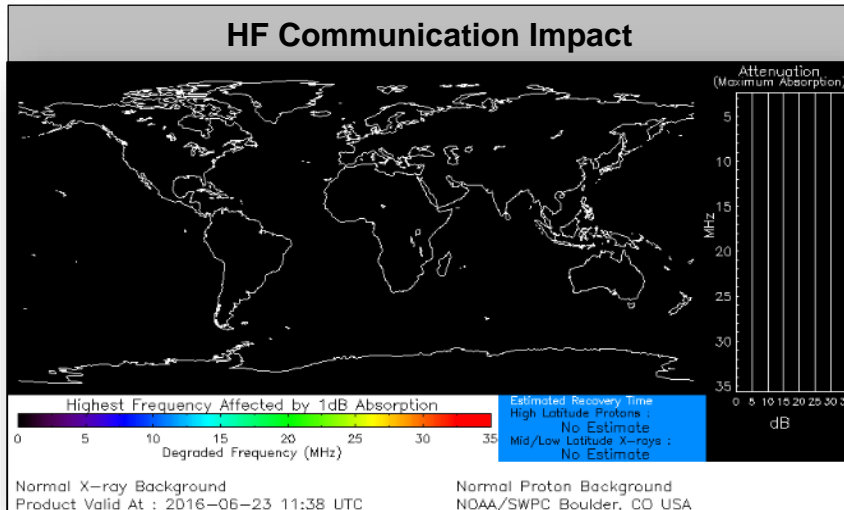


FEMA

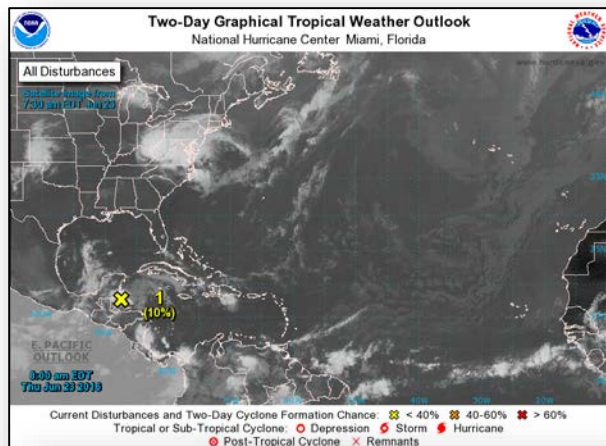


# Space Weather

	Past 24 Hours	Current	Next 24 Hours
Space Weather Activity	None	None	None
Geomagnetic Storms	None	None	None
Solar Radiation Storms	None	None	None
Radio Blackouts	None	None	None

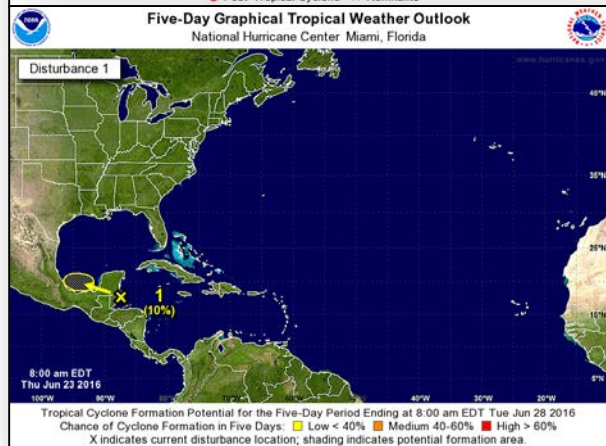


# Tropical Outlook – Atlantic

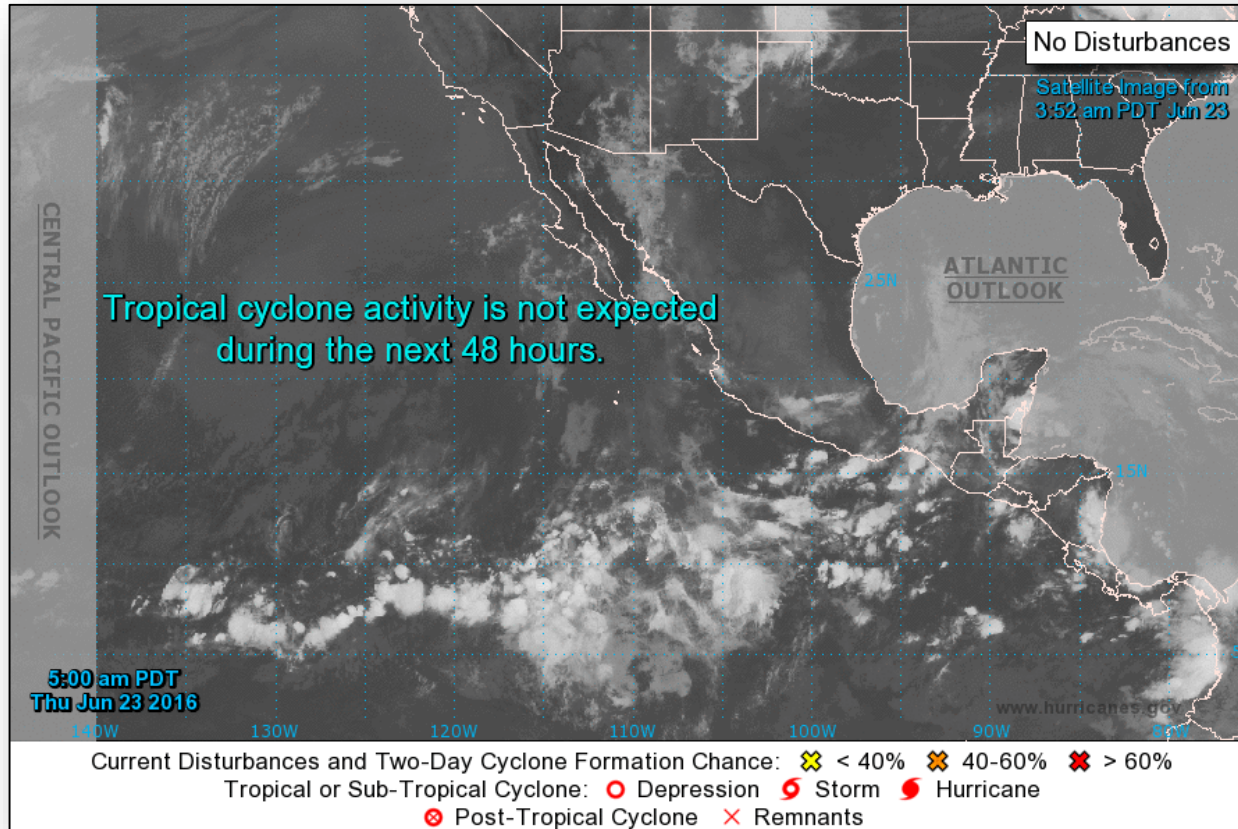


## Disturbance 1:

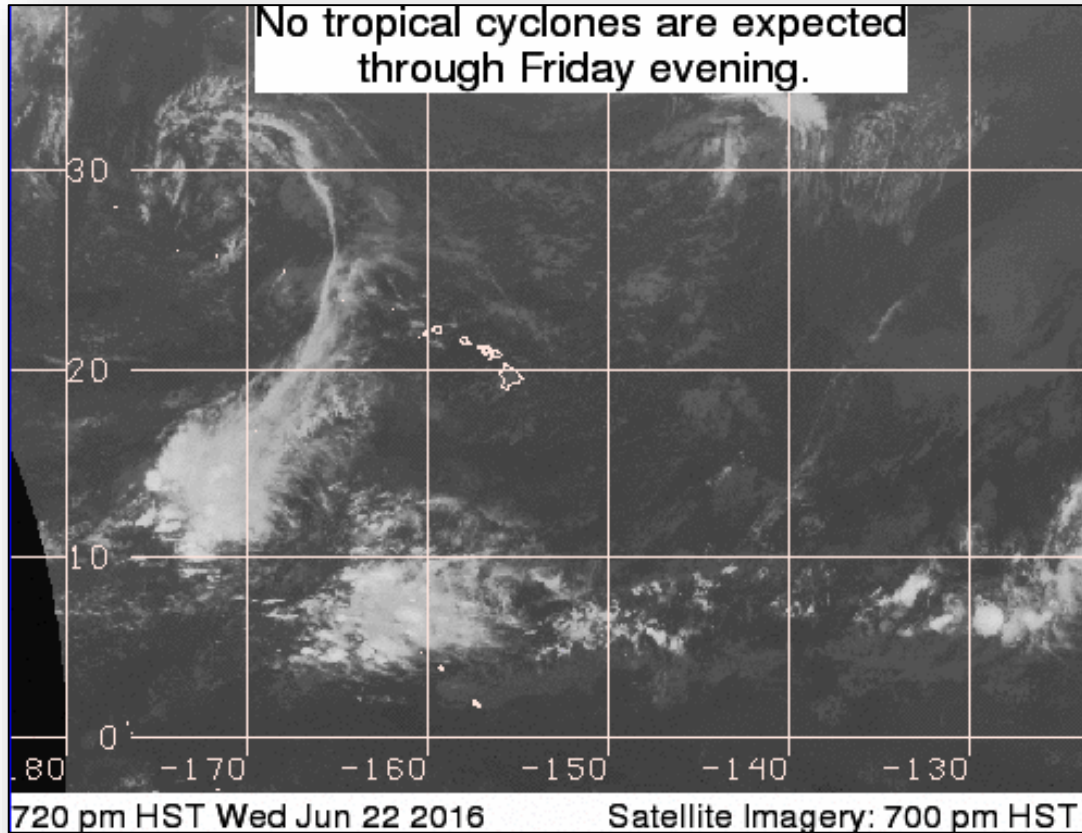
- Disorganized showers and thunderstorms over the northwestern Caribbean Sea associated with a tropical wave and weak low pressure area
- Development of this system is not expected today due to it moving over the Yucatan Peninsula and Belize
- Some development of this system is possible on Friday if the system emerges over the Bay of Campeche before again moving inland on Saturday
- Formation chance through 48 hours: Low (10%)
- Formation chance through 5 days: Low (10%)



# Tropical Outlook – Eastern Pacific



# Tropical Outlook – Central Pacific



# Wildfire Summary



Fire Name (County)	FMAG #	Acres burned	% Contained	Evacuations (Residents)	Structures Threatened	Structures Damaged / Destroyed	Fatalities / Injuries
<b>California (3)</b>							
Border 3 (San Diego County)	FEMA-5128-FM-CA (Approved June 19)	6,723 (+223)	20% (+5)	Mandatory (500)	200 (-700) Homes	1 / 5 homes, 12 minor structures	0 / 0
*Fish (Los Angeles County)	FEMA-5129-FM-CA (Approved June 21)	3,700	10%	Mandatory (800)	858 (+158) Homes	0 / 9	1 / 2
*Reservoir (Los Angeles County)	Not Requested	1,200	15%	None	2 Homes 6 Mixed Commercial	0 / 0	0 / 1
<b>Utah (1)</b>							
Saddle (Saddle County)	FEMA-5130-FM-UT (Approved June 21)	823 (+321)	0%	Mandatory (180)	500 (+300) Homes	0 / 0	0 / 2

\* The Fish and Reservoir fires were referred to as the San Gabriel Complex; these fires have again been separated by fire officials for reporting



# Joint Preliminary Damage Assessments



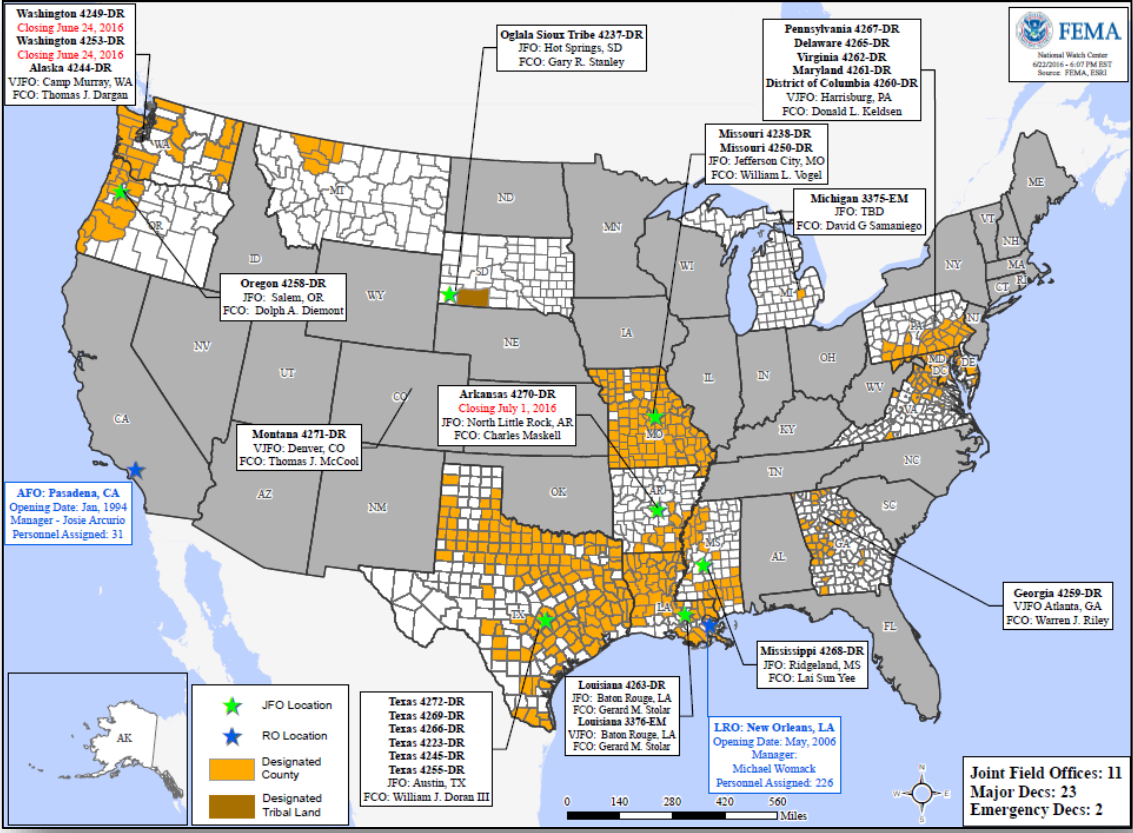
Region	State / Location	Event	IA/PA	Number of Counties		Start – End
				Requested	Complete	
VI	OK	Flooding June 1-12, 2016	IA	4	1	6/20 – TBD
VII	KS	Severe Storms and Flooding May 22-31, 2016	PA	15	0	6/20 – TBD

# Disaster Amendments



Amendment	Effective Date	Action
No. 1 to FEMA-4272-DR-TX	June 22, 2016	Adds 7 counties for Individual Assistance (IA)

# Open Field Offices as of June 23, 2016



# FEMA Readiness – Deployable Teams/Assets



Deployable Teams/Assets									
Resource	Status	Total	FMC Available		Partially Available	Not Available	Detailed, Deployed, Activated	Comments	Rating Criterion
FCO		33	15	45%	0	1	17		OFDC Readiness: FCO Green Yellow Red Type 1 3+ 2 1 Type 2 4+ 3 2 Type 3 4 3 2 FDRC 3 2 1
FDRC		9	5	56%	0	0	4		
US&R		28	27	96%	1	0	0	NJ TF-1 Partially Mission Capable	<ul style="list-style-type: none"> <li>Green = Available/FMC</li> <li>Yellow = Available/PMC</li> <li>Red = Out-of-Service</li> <li>Blue = Assigned/Deployed</li> </ul>
National IMAT		3	3	100%	0	0	0		<ul style="list-style-type: none"> <li>Green: 3 available</li> <li>Yellow: 1-2 available</li> <li>Red: 0 avail (<i>Individual N-IMAT red if 50% of Section Chiefs and/or Team Leader is unavailable for deployment.</i>)</li> </ul>
Regional IMAT		13	10	77%	0	0	3	<b>Deployed:</b> RV: to MI (3375-MI) RVI: Team 1 to TX (4266-TX) RVII: to TX (4272-TX)	<ul style="list-style-type: none"> <li>Green: &gt;6 teams available</li> <li>Yellow: 4 - 6 teams available</li> <li>Red: &lt; 4 teams available</li> </ul> <i>R-IMAT also red if TL Ops/Log Chief is unavailable &amp; has no qualified replacement</i>
MERS Teams		18	14	78%	0	0	4	<b>Deployed:</b> Denton: 2 teams to TX (4272-TX) Bothell: 1 team to HI; 1 to CA (Cache Maintenance)	<ul style="list-style-type: none"> <li>Green = &gt;66% available</li> <li>Yellow = 33% to 66% available</li> <li>Red = &lt;33% available</li> </ul>

# FEMA Readiness – National/Regional Teams



National/Regional Teams									
Resource	Status	Total	FMC Available		Partially Available	Not Available	Status	Comments	Rating Criterion
NWC		5	5	100%	0	0	Watch / Steady State		<ul style="list-style-type: none"> <li>• Green = FMC</li> <li>• Yellow = PMC</li> <li>• Red = NMC</li> </ul>
NRCC		2	2	100%	0	0	Not Activated		
HLT		1	N/A	N/A	0	0	Activated		
DEST							Not Activated		
RRCCs		10	10	100%	0	0	Not Activated		
RWCs/MOCs		10	10	100%	0	0	Activated	Region VI RWC Enhanced Watch (day shift only)	



# FEMA

**FEMA's mission is to support our citizens and first responders to ensure that as a nation we work together to build, sustain, and improve our capability to prepare for, protect against, respond to, recover from, and mitigate all hazards.**